

STATE OF COLORADO

Abstract of Votes Cast

AT THE

Primary Election

Held on the Eighth Day of September
A. D. 1914

AND AT THE

General Election

Held on the Third Day of November,
A. D. 1914

FOR

United States Senators, Congressmen, and State,
Legislative and District Officers

ALSO THE

Proposed Constitutional Amendments
Initiated and Referred Measures

COMPILED FROM OFFICIAL RETURNS

BY

JOHN E. RAMER

Secretary of State

1915



DENVER, COLORADO

STATE OF COLORADO

Abstract of Votes Cast

AT THE

Primary Election

Held on the Eighth Day of September
A. D. 1914

AND AT THE

General Election

Held on Third Day of November.
A. D. 1914

FOR

United States Senators, Congressmen, and State,
Legislative and District Officers

ALSO THE

Proposed Constitutional Amendments
Initiated and Referred Measures

COMPILED FROM OFFICIAL RETURNS

BY

JOHN E. RAMER
Secretary of State

1915



DENVER, COLORADO

ABSTRACT OF VOTES CAST

ABSTRACT OF VOTES CAST AT A PRIMARY ELECTION HELD ON TUESDAY, SEPTEMBER 8, A. D. 1914, FOR STATE SENATORS FROM THE FIRST SENATORIAL DISTRICT.

City and County of Denver.

Julius Aichele, Democrat.....	3,625
Charles B. Hamilton, Democrat.....	3,925
Philip McCarty, Democrat.....	3,479
Martin H. Mitchell, Democrat.....	3,185
Benjamin A. Sweet, Democrat.....	3,163
William D. Wright, Jr., Democrat.....	3,089
William H. Andrews, Democrat.....	2,879
Harvey E. Garman, Democrat.....	2,778
Watt G. Sheldon, Democrat.....	1,934
John Mollison, Democrat.....	1,929

Scattering, six candidates, 6.

Hamilton over Sweet.....	762
Aichele over Sweet.....	462
McCarty over Sweet.....	216
Mitchell over Sweet.....	22
Frank L. Dodge, Republican.....	4,235
Francis J. Knauss, Republican.....	4,156
John E. Holmberg, Republican.....	3,994
William R. Eaton, Republican.....	3,421
William A. Carpenter, Republican.....	3,413
Lucien B. Vick Roy, Republican.....	2,660
Frank S. Tesch, Republican.....	2,217
James M. Travis, Republican.....	2,075
Edward M. Dighton, Republican.....	1,798
Leon M. Hattenbach, Republican.....	1,719
Abraham D. Radinsky, Republican.....	1,201
Ida B. Blakemore, Republican.....	1,022

Scattering, 1.

Dodge over Carpenter.....	822
Knauss over Carpenter.....	743
Holmberg over Carpenter.....	581
Eaton over Carpenter.....	8

ABSTRACT OF VOTES CAST

Chester E. Smedley, Progressive	1,630
Charles M. Knowles, Progressive.....	1,478
Hattie K. Howard, Progressive.....	1,440
Maude M. Sanders, Progressive.....	1,427
J. I. Carper, Progressive.....	1,048
Smedley over Carper.....	582
Knowles over Carper.....	451
Howard over Carper.....	392
Sanders over Carper.....	379

ABSTRACT OF VOTES CAST AT A PRIMARY ELECTION HELD ON TUESDAY, SEPTEMBER 8, A. D. 1914, FOR STATE SENATOR FROM THE SECOND SENATORIAL DISTRICT.

COUNTY	H. G. DeTienne (Dem.)	C. J. Leftwich (Dem.)	G. M. Ashton (Dem.)	Wilkins O. Peterson (Rep.)	J. C. Elwell (Prog.)
Pueblo	2,160	1,615	1,023	2,644	1
De Tienne over Leftwich.....					545

ABSTRACT OF VOTES CAST AT A PRIMARY ELECTION HELD ON TUESDAY, SEPTEMBER 8, A. D. 1914, FOR STATE SENATOR FROM THE THIRD SENATORIAL DISTRICT.

COUNTY	John T. Kavanaugh (Dem.)	David Elliott (Rep.)	C. A. Lemmers (Prog.)
El Paso	1,334	1,513	416
Scattering, Democratic, 8.			
Scattering, Republican, 2.			

ABSTRACT OF VOTES CAST

ABSTRACT OF VOTES CAST AT A PRIMARY ELECTION HELD ON TUESDAY, SEPTEMBER 8, A. D. 1914, FOR STATE SENATOR FROM THE FOURTEENTH SENATORIAL DISTRICT.

COUNTIES	A. D. Mackenzie (Dem.)	Charles Hayden (Rep.)	A. D. Mackenzie (Prog.)
Costilla	78	344	4
Custer	198	38	8
Huerfano	580	1,248	39
	<hr/>	<hr/>	<hr/>
	856	1,630	51

Scattering, Democratic, 1.

ABSTRACT OF VOTES CAST AT A PRIMARY ELECTION HELD ON TUESDAY, SEPTEMBER 8, A. D. 1914, FOR STATE SENATOR FROM THE FIFTEENTH SENATORIAL DISTRICT.

COUNTIES	Byron A. Roloson (Dem.)	Frank H. Means (Rep.)
Mineral	60	39
Rio Grande	159	333
Saguache	231	299
	<hr/>	<hr/>
	450	671

Scattering, Democratic, 1.

Scattering, Republican, 2.

ABSTRACT OF VOTES CAST

ABSTRACT OF VOTES CAST AT A PRIMARY ELECTION HELD ON TUESDAY, SEPTEMBER 8, A. D. 1914, FOR STATE SENATOR FROM THE SIXTEENTH SENATORIAL DISTRICT.

COUNTY	Herman W. Kluge (Dem.)	F. Barnard Welsh (Rep.)	Avery C. Newton (Prog.)
Mesa	580	263	216
Scattering, Republican, 2.			

ABSTRACT OF VOTES CAST AT A PRIMARY ELECTION HELD ON TUESDAY, SEPTEMBER 8, A. D. 1914, FOR STATE SENATOR FROM THE SEVENTEENTH SENATORIAL DISTRICT.

COUNTIES	Fred Shermerhorn (Dem.)	S. B. Wonder (Rep.)	H. J. Baird (Prog.)
Dolores	77	3	0
Montrose	750	366	1
San Miguel	392	117	0
	1,219	486	1
Scattering, Democratic, 2.			

ABSTRACT OF VOTES CAST

ABSTRACT OF VOTES CAST AT A PRIMARY ELECTION HELD ON TUESDAY, SEPTEMBER 8, A. D. 1914, FOR STATE SENATOR FROM THE EIGHTEENTH SENATORIAL DISTRICT.

COUNTIES	John H. Slattery (Dem.)	W. Z. Kinney (Rep.)
Archuleta	81	118
Hinsdale	31	50
Ouray	221	115
San Juan	81	146
	<hr/>	<hr/>
	414	429

ABSTRACT OF VOTES CAST AT A PRIMARY ELECTION HELD ON TUESDAY, SEPTEMBER 8, A. D. 1914, FOR STATE SENATOR FROM THE TWENTIETH SENATORIAL DISTRICT.

COUNTIES	L. A. Van Tilborg (Dem.)	George Lewis (Dem.)	Melville B. Rapp (Rep.)	H. G. Thomas (Prog.)	L. J. McLean (Prog.)
Park	155	123	81	3	0
Teller	1,078	2,309	237	77	43
	<hr/>	<hr/>	<hr/>	<hr/>	<hr/>
	1,233	2,432	318	80	43

Scattering, Republican, two candidates, 6.

Lewis over Van Tilborg	1,159
Thomas over McLean	37

ABSTRACT OF VOTES CAST AT A PRIMARY ELECTION HELD ON TUESDAY, SEPTEMBER 8, A. D. 1914, FOR STATE SENATOR FROM THE TWENTY-FIFTH SENATORIAL DISTRICT.

COUNTIES	M. M. Simpson (Dem.)	John S. Hasty (Rep.)	Stephen A. Crary (Prog.)	C. W. Beach (Prog.)
Baca	168	209	4	2
Bent	223	119	15	26
Kiowa	144	83	21	9
Prowers	217	321	115	25
	<hr/>	<hr/>	<hr/>	<hr/>
	752	732	155	62
Scattering, 2.				
Crary over Beach.....				93

ABSTRACT OF VOTES CAST AT A PRIMARY ELECTION HELD ON TUESDAY, SEPTEMBER 8, A. D. 1914, FOR STATE SENATOR FROM THE TWENTY-SEVENTH SENATORIAL DISTRICT.

COUNTIES	William D. Reilly (Dem.)	John P. Dickinson (Rep.)	W. H. Abbott (Prog.)
Cheyenne	222	290	0
Douglas	141	207	2
Elbert	151	154	4
Kit Carson	360	293	53
Lincoln	279	516	9
	<hr/>	<hr/>	<hr/>
	1,153	1,466	68
Scattering, six candidates, 8.			

ABSTRACT OF VOTES CAST AT A PRIMARY ELECTION HELD ON TUESDAY, SEPTEMBER 8, A. D. 1914, FOR REPRESENTATIVES IN THE TWENTIETH GENERAL ASSEMBLY FROM THE CITY AND COUNTY OF DENVER.

Thomas F. McGovern, Democrat.....	4,166
Thomas M. Hyder, Democrat.....	3,956
Edward V. Dunklee, Democrat.....	3,610
Louise A. Maloney, Democrat.....	3,570
John Redmond Williams, Democrat.....	3,508
Rufus P. Means, Democrat.....	3,126
Evangeline Hartz, Democrat.....	3,080
Benjamin J. Salmon, Democrat.....	2,809
James O. Garrett, Democrat.....	2,761
Stephen W. Ryan, Democrat.....	2,723
Albert G. Craig, Democrat.....	2,646
John Deitrich, Democrat.....	2,581
Simon J. Heller, Democrat.....	2,444
Thomas F. McAleer, Democrat.....	2,441
Barclay P. Smith, Democrat.....	2,371
George R. Henry, Democrat.....	2,349
William Baxter Peck, Democrat.....	2,340
Louise U. Jones, Democrat.....	2,267
Louise M. Kerwin, Democrat.....	2,222
Robert W. Hardman, Democrat.....	2,157
Andrew J. Woodside, Democrat.....	2,141
Joseph H. Sells, Democrat.....	2,072
Rudolph Borchardt, Democrat.....	2,060
Albert L. Rich, Democrat.....	1,968
Edward L. Clover, Democrat.....	1,924
Theodore H. Proske, Democrat.....	1,893
John P. Hamill, Democrat.....	1,873
Hiram F. Parker, Democrat.....	1,680
Wayne A. Gunkle, Democrat.....	1,672
John Salmond, Democrat.....	1,596
Charlotte Speigl, Democrat.....	1,500
Scattering, 9.	
McGovern over Heller.....	1,722
Hyder over Heller.....	1,512
Dunklee over Heller.....	1,166
Maloney over Heller.....	1,126

ABSTRACT OF VOTES CAST AT A PRIMARY ELECTION HELD ON TUESDAY, SEPTEMBER 8, A. D. 1914, FOR REPRESENTATIVES IN THE TWENTIETH GENERAL ASSEMBLY FROM THE CITY AND COUNTY OF DENVER.—Continued.

Williams over Heller.....	1,064
Means over Heller.....	682
Hertz over Heller.....	636
Salmon over Heller.....	365
Garrett over Heller.....	317
Ryan over Heller.....	279
Craig over Heller.....	202
Deitrich over Heller.....	137
Edward M. Sabin, Republican.....	5,796
Harold G. Garwood, Republican.....	5,554
Thomas Tonge, Republican.....	5,226
George B. Drake, Republican.....	4,842
Robert Harris, Republican.....	4,601
James T. Macey, Republican.....	4,579
Walter P. Garretson, Republican.....	4,563
Carroll M. Bills, Republican.....	4,527
Frank D. Thompson, Republican.....	3,991
William W. Howland, Republican.....	3,942
Randolph M. Hagerman, Republican.....	3,756
Charles W. Varnum, Republican.....	3,751
James V. Benson, Republican.....	3,382
Wilbert E. Gould, Republican.....	3,288
Harry Zimmerhackel, Republican.....	3,171
Clyde L. Taylor, Republican.....	3,108
Edward H. Kerin, Republican.....	2,915
Victoria M. Davis, Republican.....	2,850
Rebecca E. England, Republican.....	2,584
Frederick Yeakel, Republican.....	2,426
Emma J. Berger, Republican.....	2,179
Eva S. Rinkle, Republican.....	2,017
Martin M. Abelson, Republican.....	1,477
Scattering, 7.	
Sabin over Benson.....	2,414
Garwood over Benson.....	2,172

ABSTRACT OF VOTES CAST AT A PRIMARY ELECTION HELD ON TUESDAY, SEPTEMBER 8, A. D. 1914, FOR REPRESENTATIVES IN THE TWENTIETH GENERAL ASSEMBLY FROM THE CITY AND COUNTY OF DENVER.—Continued.

Tongue over Benson.....	1,844
Drake over Benson.....	1,460
Harris over Benson.....	1,219
Macey over Benson.....	1,197
Garretson over Benson.....	1,181
Bills over Benson.....	1,145
Thompson over Benson.....	609
Howland over Benson.....	560
Hagerman over Benson.....	374
Varnum over Benson.....	369
Burnett S. Pepper, Progressive.....	1,523
William Englebert Frye, Progressive.....	1,461
Schuyler C. Peck, Progressive.....	1,421
William F. Evans, Progressive.....	1,391
Charles H. Schreiber, Progressive.....	1,332
Walter L. Wilder, Progressive.....	1,259
William P. Simmington, Progressive.....	1,252
William T. Boyd, Progressive.....	1,201
Joseph S. Baker, Progressive.....	1,151
McLeod M. George, Progressive.....	1,124
William J. McPherson, Progressive.....	1,105
John A. Rymer, Progressive.....	1,007
Paul E. Spratlin, Progressive.....	809
Margaret W. Kessler, Progressive.....	807
George W. Wilder, Progressive.....	730
H. T. Schoepflin, Progressive.....	695
Jacob R. Hermann, Progressive.....	670
Carl A. Eckman, Progressive.....	658
Andrew J. Stepp, Progressive.....	656
Michael Kirshstein, Progressive.....	466
Phillip H. Berland, Progressive.....	457

Scattering, 6.

ABSTRACT OF VOTES CAST AT A PRIMARY ELECTION HELD ON TUESDAY, SEPTEMBER 8, A. D. 1914, FOR REPRESENTATIVES IN THE TWENTIETH GENERAL ASSEMBLY FROM THE CITY AND COUNTY OF DENVER.—Continued.

Pepper over Spratlin.....	714
Frye over Spratlin.....	652
Peck over Spratlin.....	612
Evans over Spratlin.....	582
Schreiber over Spratlin.....	523
Wilder (W. L.) over Spratlin.....	450
Simmington over Spratlin.....	443
Boyd over Spratlin.....	392
Baker over Spratlin.....	342
George over Spratlin.....	315
McPherson over Spratlin.....	296
Rymer over Spratlin.....	198

ABSTRACT OF VOTES CAST AT A PRIMARY ELECTION HELD ON TUESDAY, SEPTEMBER 8, A. D. 1914, FOR REPRESENTATIVE IN THE TWENTIETH GENERAL ASSEMBLY, FROM THE COUNTY OF ADAMS.

COUNTY	James N. Counter (Dem.)	Peter Gurtz (Dem.)	H. G. Emery (Dem.)	Samuel H. Morrow (Rep.)	Samuel H. Morrow (Prog.)
Adams	741	270	142	98	44
Counter over Gurtz.....					471

ABSTRACT OF VOTES CAST

ABSTRACT OF VOTES CAST AT A PRIMARY ELECTION HELD ON TUESDAY, SEPTEMBER 8, A. D. 1914, FOR REPRESENTATIVE IN THE TWENTIETH GENERAL ASSEMBLY, FROM THE COUNTY OF ALAMOSA.

COUNTY	Robert M. Born (Dem.)	Errcilio Beltran (Dem.)	Perry Craig (Rep.)	Arthur M. Stoug (Rep.)	Perry Craig (Prog.)
Alamosa	407	151	215	64	33
Born over Beltran.....				256	
Craig (Republican) over Stoug.....			151		

ABSTRACT OF VOTES CAST AT A PRIMARY ELECTION HELD ON TUESDAY, SEPTEMBER 8, A. D. 1914, FOR REPRESENTATIVE IN THE TWENTIETH GENERAL ASSEMBLY, FROM THE COUNTIES OF ARAPAHOE AND ELBERT.

COUNTIES	Fred F. Hee (Dem.)	J. J. Kruse (Rep.)	Frank Ford (Prog.)
Arapahoe	517	197	258
Elbert	124	185	3
	641	382	260

Scattering, 1.

ABSTRACT OF VOTES CAST AT A PRIMARY ELECTION HELD ON TUESDAY, SEPTEMBER 8, A. D. 1914, FOR REPRESENTATIVES IN THE TWENTIETH GENERAL ASSEMBLY, FROM THE COUNTY OF BOULDER.

A. P. Ardourel, Democrat.....	759
Joseph Hurd, Democrat	723
V. H. Hamilton, Democrat	571
Elbert Greenman, Democrat	413
E. L. Montgomery, Republican	773
L. E. Girard, Republican	582
Eugene Stevens, Republican	557
D. A. Strong, Republican	350
H. D. Tobey, Republican	333
Eugene Stevens, Progressive	81
D. A. Strong, Progressive	77
Scattering, 3.	
Ardourel over Hamilton.....	188
Hurd over Hamilton	152
Montgomery over Stevens (Republican).....	216
Girard over Stevens (Republican).....	25

ABSTRACT OF VOTES CAST AT A PRIMARY ELECTION HELD ON TUESDAY, SEPTEMBER 8, A. D. 1914, FOR REPRESENTATIVE IN THE TWENTIETH GENERAL ASSEMBLY, FROM THE COUNTY OF CHAFFEE.

COUNTY	A. E. Wright, Jr. (Dem.)	W. C. Alexander (Rep.)
Chaffee	349	3
Scattering, 1.		

ABSTRACT OF VOTES CAST

ABSTRACT OF VOTES CAST AT A PRIMARY ELECTION HELD ON TUESDAY, SEPTEMBER 8, A. D. 1914, FOR REPRESENTATIVE IN THE TWENTIETH GENERAL ASSEMBLY, FROM THE COUNTY OF CLEAR CREEK.

COUNTY	Frank Brady (Dem.)	Herman E. Crist (Rep.)
Clear Creek	337	264

ABSTRACT OF VOTES CAST AT A PRIMARY ELECTION HELD ON TUESDAY, SEPTEMBER 8, A. D. 1914, FOR REPRESENTATIVE IN THE TWENTIETH GENERAL ASSEMBLY, FROM THE COUNTY OF CONEJOS.

COUNTY	Ricardo Gonzales (Dem.)	Celestino Gracia (Rep.)
Conejos	246	601

ABSTRACT OF VOTES CAST AT A PRIMARY ELECTION HELD ON TUESDAY, SEPTEMBER 8, A. D. 1914, FOR REPRESENTATIVES IN THE TWENTIETH GENERAL ASSEMBLY, FROM THE COUNTIES OF CROWLEY AND OTERO.

COUNTIES	Orlando W. West (Dem.)	Stephen P. Ilgenfritz (Dem.)	Chas. C. Wool- dridge (Rep.)	Reuben C. Inge (Rep.)
Crowley	270	323	166	100
Otero	926	468	429	413
	1,196	791	595	513

Charles C. Wooldridge (Prog.) Reuben C. Ingle (Prog.)

Crowley	7	2
Otero	26	17
	33	19
West Over Ilgenfritz		405
Wooldridge over Inge		96

ABSTRACT OF VOTES CAST

ABSTRACT OF VOTES CAST AT A PRIMARY ELECTION HELD ON TUESDAY, SEPTEMBER 8, A. D. 1914, FOR REPRESENTATIVE IN THE TWENTIETH GENERAL ASSEMBLY, FROM THE COUNTY OF DELTA.

COUNTY	Geo. W. Bruce (Dem.)	Adair J. Hotchkiss (Dem.)	Jacob Keiser (Rep.)	C. C. Hawkins (Prog.)
Delta	265	139	239	365
Scattering, 1.				
Bruce over Hotchkiss.....				126

ABSTRACT OF VOTES CAST AT A PRIMARY ELECTION HELD ON TUESDAY, SEPTEMBER 8, A. D. 1914, FOR REPRESENTATIVE IN THE TWENTIETH GENERAL ASSEMBLY, FROM THE COUNTY OF DOUGLAS.

COUNTY	Charles Shipman (Dem.)	Hugh Taylor (Rep.)	W. A. Palmer (Prog.)
Douglas	43	250	1
Scattering, 8 Candidates, 15.			

ABSTRACT OF VOTES CAST AT A PRIMARY ELECTION HELD ON TUESDAY, SEPTEMBER 8, A. D. 1914, FOR REPRESENTATIVE IN THE TWENTIETH GENERAL ASSEMBLY, FROM THE COUNTY OF EAGLE.

E. E. Kennedy, Democrat	205
Frank E. French, Democrat.....	198
Thomas Ryan, Democrat.....	52
James Dilts, Republican.....	271
R. W. Livers, Progressive.....	5
Scattering, 3.	
Kennedy over French.....	7

ABSTRACT OF VOTES CAST

ABSTRACT OF VOTES CAST AT A PRIMARY ELECTION HELD ON TUESDAY, SEPTEMBER 8, A. D. 1914, FOR REPRESENTATIVES IN THE TWENTIETH GENERAL ASSEMBLY, FROM THE COUNTY OF EL PASO.

Jack Grant, Democrat.....	1,018
J. M. Pribble, Democrat.....	815
M. M. Sinton, Democrat.....	59
J. C. Bates, Democrat.....	46
George M. Taylor, Republican.....	1,443
P. B. Stewart, Republican.....	415
L. A. Puffer, Republican.....	408
Thomas E. Thomas, Progressive.....	396
Lillian H. Kerr, Progressive.....	329
George B. Gould, Progressive.....	294
John Longfield, Progressive.....	197
Ray V. Wiley, Progressive.....	110

Scattering, Democratic, 11 Candidates, 46

Scattering, Republican, 3 Candidates, 17

Grant over Bates.....	972
Pribble over Bates.....	769
Sinton over Bates.....	13
Thomas over Longfield.....	199
Kerr over Longfield.....	132
Gould over Longfield.....	97

ABSTRACT OF VOTES CAST AT A PRIMARY ELECTION HELD ON TUESDAY, SEPTEMBER 8, A. D. 1914, FOR REPRESENTATIVE IN THE TWENTIETH GENERAL ASSEMBLY, FROM THE COUNTY OF FREMONT.

COUNTY	Allen Bell (Dem.)	Geo. E. Colgate (Rep.)	J. Homer Dickson (Prog.)
Fremont	528	653	72

Scattering, Democratic, 3.

ABSTRACT OF VOTES CAST AT A PRIMARY ELECTION HELD ON TUESDAY, SEPTEMBER 8, A. D. 1914, FOR REPRESENTATIVE IN THE TWENTIETH GENERAL ASSEMBLY, FROM THE COUNTIES OF GARFIELD AND RIO BLANCO.

COUNTIES	Willis S. Montgomery (Dem.)	Edwin C. Kingsbury (Dem.)	J. R. Smith (Dem.)	John L. Noonan (Rep.)	Fred L. Tomlin (Prog.)
Garfield	408	305	304	248	7
Rio Blanco	139	21	12	66	0
	547	326	316	314	7
Montgomery over Kingsbury.....					221

ABSTRACT OF VOTES CAST AT A PRIMARY ELECTION HELD ON TUESDAY, SEPTEMBER 8, A. D. 1914, FOR REPRESENTATIVE IN THE TWENTIETH GENERAL ASSEMBLY, FROM THE COUNTY OF GILPIN.

COUNTY	H. C. Bolsinger (Dem.)	William M. Kirk (Dem.)	Henry R. Eilmann (Dem.)	William C. Matthews (Rep.)	William M. Kirk (Prog.)
Gilpin	139	127	97	121	14
Bolsinger, Democrat, over Kirk, Democrat.....					12

ABSTRACT OF VOTES CAST AT A PRIMARY ELECTION HELD ON TUESDAY, SEPTEMBER 8, A. D. 1914, FOR REPRESENTATIVE IN THE TWENTIETH GENERAL ASSEMBLY, FROM THE COUNTY OF GUNNISON.

COUNTY	James A. McElroy (Dem.)	M. S. Henderson (Dem.)	W. Scott Humason (Rep.)
Gunnison	239	219	188
McElroy over Henderson.....			20

ABSTRACT OF VOTES CAST

ABSTRACT OF VOTES CAST AT A PRIMARY ELECTION HELD ON TUESDAY, SEPTEMBER 8, A. D. 1914, FOR REPRESENTATIVE IN THE TWENTIETH GENERAL ASSEMBLY, FROM THE COUNTIES OF HINSDALE, ARCHULETA, AND MINERAL.

COUNTIES	James J. O'Rourke (Dem.)	A. M. Collins (Rep.)
Hinsdale	27	62
Archuleta	87	112
Mineral	69	51
	<hr/>	<hr/>
	183	225

ABSTRACT OF VOTES CAST AT A PRIMARY ELECTION HELD ON TUESDAY, SEPTEMBER 8, A. D. 1914, FOR REPRESENTATIVE IN THE TWENTIETH GENERAL ASSEMBLY, FROM THE COUNTIES OF HUERFANO AND COSTILLA.

COUNTIES	J. P. Campbell (Dem.)	J. P. Gallegos (Rep.)	J. P. Campbell (Prog.)
Huerfano	611	1,155	35
Costilla	78	324	5
	<hr/>	<hr/>	<hr/>
	689	1,479	40

Scattering, 3.

ABSTRACT OF VOTES CAST AT A PRIMARY ELECTION HELD ON TUESDAY, SEPTEMBER 8, A. D. 1914, FOR REPRESENTATIVE IN THE TWENTIETH GENERAL ASSEMBLY, FROM THE COUNTY OF JEFFERSON.

COUNTY	George B. Campbell (Dem.)	Wesley Staley (Dem.)	Charles C. Welch (Rep.)	John Grattan (Prog.)
Jefferson	323	364	1,171	97
Staley over Campbell.....				41

ABSTRACT OF VOTES CAST AT A PRIMARY ELECTION HELD ON TUESDAY, SEPTEMBER 8, A. D. 1914, FOR REPRESENTATIVE IN THE TWENTIETH GENERAL ASSEMBLY, FROM THE COUNTIES OF KIOWA AND BENT.

COUNTIES	Boon Best (Dem.)	W. A. Hasty (Rep.)	W. A. Hasty (Prog.)
Kiowa	145	32	12
Bent	205	60	9
	350	92	21

Scattering, 6.

ABSTRACT OF VOTES CAST AT A PRIMARY ELECTION HELD ON TUESDAY, SEPTEMBER 8, A. D. 1914, FOR REPRESENTATIVE IN THE TWENTIETH GENERAL ASSEMBLY, FROM THE COUNTY OF LAKE.

COUNTY	Fred J. McNair (Dem.)	Winters Morrell (Rep.)	Winters Morrell (Prog.)
Lake	537	580	36

ABSTRACT OF VOTES CAST

ABSTRACT OF VOTES CAST AT A PRIMARY ELECTION HELD ON TUESDAY, SEPTEMBER 8, A. D. 1914, FOR REPRESENTATIVE IN THE TWENTIETH GENERAL ASSEMBLY, FROM THE COUNTY OF LA PLATA.

COUNTY	William O. Jemison (Dem.)	L. E. Smith (Dem.)	John H. McDevitt, Jr. (Rep.)
La Plata	500	314	467
Jemison over Smith.....			186

ABSTRACT OF VOTES CAST AT A PRIMARY ELECTION HELD ON TUESDAY, SEPTEMBER 8, A. D. 1914, FOR REPRESENTATIVE IN THE TWENTIETH GENERAL ASSEMBLY, FROM THE COUNTY OF LARIMER.

COUNTY	Abram C. Van Galder (Dem.)	P. D. Nelson (Rep.)	P. D. Nelson (Prog.)
Larimer	33	1,032	33
Scattering, Democratic, 4.			

ABSTRACT OF VOTES CAST AT A PRIMARY ELECTION HELD ON TUESDAY, SEPTEMBER 8, A. D. 1914, FOR REPRESENTATIVES IN THE TWENTIETH GENERAL ASSEMBLY, FROM THE COUNTY OF LAS ANIMAS.

F. E. Nelson, Democrat.....	1,166
Meliton R. Vasquez, Democrat.....	1,102
P. J. Martinez, Democrat.....	820
Leandro Martinez, Democrat.....	475
H. A. Schmidt, Republican.....	1,618
John Mayer, Republican.....	1,143
Faustin T. Mascarenas, Republican.....	927
J. B. Proctor, Progressive.....	44
Nelson over Martinez (P. J.).....	346
Vasquez over Martinez (P. J.).....	282
Schmidt over Mascarenas.....	691
Mayer over Mascarenas.....	216

ABSTRACT OF VOTES CAST AT A PRIMARY ELECTION HELD ON TUESDAY, SEPTEMBER 8, A. D. 1914, FOR REPRESENTATIVE IN THE TWENTIETH GENERAL ASSEMBLY, FROM THE COUNTIES OF LINCOLN, KIT CARSON, AND CHEYENNE.

COUNTY	John M. Newell (Dem.)	J. M. Staley (Dem.)	F. H. Spencer (Rep.)	Clarence M. Smith (Prog.)
Lincoln	265	54	516	9
Kit Carson	317	100	272	58
Cheyenne	100	213	316	1
	<hr/>	<hr/>	<hr/>	<hr/>
	682	367	1,104	68
Newell over Staley.....				315

ABSTRACT OF VOTES CAST AT A PRIMARY ELECTION HELD ON TUESDAY, SEPTEMBER 8, A. D. 1914, FOR REPRESENTATIVE IN THE TWENTIETH GENERAL ASSEMBLY, FROM THE COUNTIES OF LOGAN AND SEDGWICK.

COUNTIES	S. G. Fosdick (Dem.)	John C. Scott (Rep.)	R. J. Dobell (Rep.)	John C. Scott (Prog.)
Logan	308	478	161	187
Sedgwick	54	16	90	164
	<hr/>	<hr/>	<hr/>	<hr/>
	362	494	251	351
Scott, Republican, over Dobell.....				243

ABSTRACT OF VOTES CAST

ABSTRACT OF VOTES CAST AT A PRIMARY ELECTION HELD ON TUESDAY, SEPTEMBER 8, A. D. 1914, FOR REPRESENTATIVE IN THE TWENTIETH GENERAL ASSEMBLY, FROM THE COUNTY OF MESA.

COUNTY	William M. Porter (Dem.)	William H. McDonald (Dem.)	J. M. Kinard (Rep.)	Laura S. Johnson (Prog.)	E. M. Gillpatrick (Prog.)
Mesa	427	230	271	147	99
Scattering, 1.					
Porter over McDonald.....					197
Johnson over Gillpatrick.....					48

ABSTRACT OF VOTES CAST AT A PRIMARY ELECTION HELD ON TUESDAY, SEPTEMBER 8, A. D. 1914, FOR REPRESENTATIVE IN THE TWENTIETH GENERAL ASSEMBLY, FROM THE COUNTIES OF MONTEZUMA AND DOLORES.

COUNTIES	William I. Myler (Dem.)	Perl B. Gates (Dem.)	S. C. Green (Rep.)
Montezuma	592	348	85
Dolores	104	45	2
	696	393	87
Myler over Gates.....			303

ABSTRACT OF VOTES CAST

ABSTRACT OF VOTES CAST AT A PRIMARY ELECTION HELD ON TUESDAY, SEPTEMBER 8, A. D. 1914, FOR REPRESENTATIVE IN THE TWENTIETH GENERAL ASSEMBLY, FROM THE COUNTY OF MONTROSE.

COUNTY	W. J. Horton (Dem.)	C. E. Adams (Rep.)
Montrose	731	339
Scattering, seven candidates, 8.		

ABSTRACT OF VOTES CAST AT A PRIMARY ELECTION HELD ON TUESDAY, SEPTEMBER 8, A. D. 1914, FOR REPRESENTATIVE IN THE TWENTIETH GENERAL ASSEMBLY, FROM THE COUNTIES OF MORGAN AND WASHINGTON.

COUNTIES	Adolph Brockman (Dem.)	Mark B. Gill (Rep.)	Ralph Drennen (Prog.)
Morgan	141	731	59
Washington	298	180	22
	439	911	81
Scattering, 2.			

ABSTRACT OF VOTES CAST AT A PRIMARY ELECTION HELD ON TUESDAY, SEPTEMBER 8, A. D. 1914, FOR REPRESENTATIVE IN THE TWENTIETH GENERAL ASSEMBLY, FROM THE COUNTY OF OURAY.

COUNTY	B. H. DuPrav (Dem.)	F. J. Manney (Dem.)	John Martin (Dem.)	R. K. Humphrey (Rep.)
Ouray	238	111	98	140
Du Prav over Manney.....			127	

ABSTRACT OF VOTES CAST

ABSTRACT OF VOTES CAST AT A PRIMARY ELECTION HELD ON TUESDAY, SEPTEMBER 8, A. D. 1914, FOR REPRESENTATIVE IN THE TWENTIETH GENERAL ASSEMBLY, FROM THE COUNTIES OF PHILLIPS AND YUMA.

COUNTIES	George B. Campbell (Dem.)	George Weir (Dem.)	Charles E. Damewood (Rep.)	Charles E. Damewood (Prog.)
Phillips	44	120	134	38
Yuma	277	62	280	33
	321	182	414	71
Scattering, 1.				
Campbell over Weir.....				139

ABSTRACT OF VOTES CAST AT A PRIMARY ELECTION HELD ON TUESDAY, SEPTEMBER 8, A. D. 1914, FOR REPRESENTATIVE IN THE TWENTIETH GENERAL ASSEMBLY, FROM THE COUNTY OF PITKIN.

COUNTY	Charles Dailey (Dem.)	J. N. Ashby (Dem.)	J. W. Deane (Rep.)	Thomas Anson (Prog.)
Pitkin	290	199	40	16
Scattering, 1.				
Dailey over Ashby.....				91

ABSTRACT OF VOTES CAST

ABSTRACT OF VOTES CAST AT A PRIMARY ELECTION HELD ON TUESDAY, SEPTEMBER 8, A. D. 1914, FOR REPRESENTATIVE IN THE TWENTIETH GENERAL ASSEMBLY, FROM THE COUNTIES OF PROWERS AND BACA.

COUNTIES	Charles F. Cook (Dem.)	Ray McGrath (Rep.)	Evan R. Jones (Prog.)	Ray McGrath (Prog.)
Prowers	221	305	98	59
Baca	167	195	4	1
	<hr/>	<hr/>	<hr/>	<hr/>
	388	500	102	60
Jones over McGrath, Progressive.....				42

ABSTRACT OF VOTES CAST AT A PRIMARY ELECTION HELD ON TUESDAY, SEPTEMBER 8, A. D. 1914, FOR REPRESENTATIVES IN THE TWENTIETH GENERAL ASSEMBLY, FROM THE COUNTY OF PUEBLO.

P. C. Dunlap, Democrat.....	2,710
F. L. Higgins, Democrat.....	2,548
Hallett C. Gallup, Democrat.....	2,405
J. M. Sare, Democrat.....	2,334
Sterling Cawfield, Democrat.....	2,211
H. F. Sarger, Democrat.....	2,058
Mrs. F. M. Gray, Democrat.....	1,895
F. E. Wallace, Republican.....	2,312
A. S. Andrew, Republican.....	2,267
F. M. Stokes, Republican.....	2,164
David W. Jones, Republican.....	2,079
Sol. Jacobs, Republican.....	740
Scattering, 4.	
Dunlap over Cawfield.....	499
Higgins over Cawfield.....	337
Gallup over Cawfield.....	194
Sare over Cawfield.....	123
Wallace over Jacobs.....	1,572
Andrew over Jacobs.....	1,527
Stokes over Jacobs.....	1,424
Jones over Jacobs.....	1,339

ABSTRACT OF VOTES CAST

ABSTRACT OF VOTES CAST AT A PRIMARY ELECTION HELD ON TUESDAY, SEPTEMBER 8, A. D. 1914, FOR REPRESENTATIVE IN THE TWENTIETH GENERAL ASSEMBLY, FROM THE COUNTY OF RIO GRANDE.

COUNTY	F. W. Carr (Dem.)	Geo. V. Gates (Dem.)	J. E. Nash (Dem.)	August Weiss (Rep.)
Rio Grande	32	8	6	348
Scattering, 4.				
Carr over Gates.....				24

ABSTRACT OF VOTES CAST AT A PRIMARY ELECTION HELD ON TUESDAY, SEPTEMBER 8, A. D. 1914, FOR REPRESENTATIVE IN THE TWENTIETH GENERAL ASSEMBLY, FROM THE COUNTIES OF ROUTT AND MOFFATT.

COUNTIES	Robert E. Norvell (Dem.)	Horace E. Dodge (Rep.)
Routt	276	154
Moffatt	75	103
	351	257

ABSTRACT OF VOTES CAST AT A PRIMARY ELECTION HELD ON TUESDAY, SEPTEMBER 8, A. D. 1914, FOR REPRESENTATIVE IN THE TWENTIETH GENERAL ASSEMBLY, FROM THE COUNTIES OF SAGUACHE AND CUSTER.

COUNTIES	Carl L. Marold (Dem.)	W. Scott Carroll (Rep.)
Saguache	260	248
Custer	161	39
	421	287

ABSTRACT OF VOTES CAST

ABSTRACT OF VOTES CAST AT A PRIMARY ELECTION HELD ON TUESDAY, SEPTEMBER 8, A. D. 1914, FOR REPRESENTATIVE IN THE TWENTIETH GENERAL ASSEMBLY, FROM THE COUNTY OF SAN JUAN.

COUNTY	John S. Fox (Dem.)	J. A. McCrimmon (Rep.)	J. A. McCrimmon (Prog.)
San Juan	82	121	10
Scattering, 2.			

ABSTRACT OF VOTES CAST AT A PRIMARY ELECTION HELD ON TUESDAY, SEPTEMBER 8, A. D. 1914, FOR REPRESENTATIVE IN THE TWENTIETH GENERAL ASSEMBLY, FROM THE COUNTY OF SAN MIGUEL.

COUNTY	W. H. Doyle (Dem.)	Albert T. Woods (Dem.)	W. R. Vanderver (Rep.)
San Miguel	360	338	136
Doyle over Woods..... 22			

ABSTRACT OF VOTES CAST AT A PRIMARY ELECTION HELD ON TUESDAY, SEPTEMBER 8, A. D. 1914, FOR REPRESENTATIVE IN THE TWENTIETH GENERAL ASSEMBLY, FROM THE COUNTIES OF SUMMIT, GRAND, AND JACKSON.

COUNTIES	Siewers Fincher (Dem.)	O. K. Gaymon (Rep.)
Summit	185	64
Grand	72	144
Jackson	20	62
-----		-----
277		270

Scattering, 2.

ABSTRACT OF VOTES CAST

ABSTRACT OF VOTES CAST AT A PRIMARY ELECTION HELD ON TUESDAY, SEPTEMBER 8, A. D. 1914, FOR REPRESENTATIVES IN THE TWENTIETH GENERAL ASSEMBLY, FROM THE COUNTIES OF TELLER AND PARK.

	Teller	Park	Total
Emery R. Young, Democrat.....	1,215	81	1,296
Clinton E. Roberts, Democrat.....	1,012	26	1,038
W. J. Williams, Democrat.....	914	32	946
A. M. McVicar, Democrat.....	773	18	791
Joseph Crumby, Democrat.....	667	9	676
Frank W. Evans, Democrat.....	391	213	604
Chas. A. Chapman, Democrat.....	418	28	446
W. A. Harrison, Republican.....	239	78	317
A. F. Willmarth, Republican.....	0	5	5
Thomas Kavanaugh, Progressive.....	101	3	104
T. W. James, Progressive.....	1	0	1

Scattering, 7.

Young over Williams.....	301
Roberts over Williams.....	98

ABSTRACT OF VOTES CAST AT A PRIMARY ELECTION HELD ON TUESDAY, SEPTEMBER 8, A. D. 1914, FOR REPRESENTATIVES IN THE TWENTIETH GENERAL ASSEMBLY, FROM THE COUNTY OF WELD.

John A. Hicks, Democrat.....	665
Charles T. Philp, Democrat.....	542
William K. Gilcrest, Republican.....	1,207
C. R. Graves, Republican.....	1,090
G. W. McMurray, Progressive.....	165
Leonard Burch, Progressive.....	140
C. O. Dodder, Progressive.....	131
A. B. Rightmire, Progressive.....	62

Scattering, 3.

McMurray over Dodder.....	34
Burch over Dodder.....	9

ABSTRACT OF VOTES CAST AT A PRIMARY ELECTION HELD ON
TUESDAY, SEPTEMBER 8, A. D. 1914, FOR UNITED STATES
SENATOR.

COUNTIES	Chas. S. Thomas (Dem.)	Hubert Work (Rep.)	Isaac N. Stevens (Rep.)	Benj. Griffith (Prog.)
Adams	916	49	96	53
Alamosa	372	89	187	34
Arapahoe	574	99	165	283
Archuleta	95	59	99	9
Baca	181	99	93	4
Bent	223	86	51	39
Boulder	1,341	922	748	118
Chaffee	371	117	86	14
Cheyenne	256	124	192	...
Clear Creek	357	154	148	11
Conejos	255	155	411	1
Costilla	89	81	287	4
Crowley	358	145	29	11
Custer	176	42	15	7
Delta	345	216	105	362
Denver	6,878	4,673	4,726	1,928
Dolores	109	3	3	7
Douglas	156	123	119	4
Eagle	350	113	153	28
Elbert	144	95	68	3
El Paso	1,655	1,371	597	527
Fremont	614	524	242	80
Garfield	890	115	194	33
Gilpin	209	45	81	7
Grand	74	82	110	4
Gunnison	369	120	91	4
Hinsdale	37	42	33	...
Huerfano	603	1,221	126	49
Jackson	24	37	38	3
Jefferson	630	832	570	98
Kiowa	142	63	24	29
Kit Carson	400	172	145	51

ABSTRACT OF VOTES CAST

ABSTRACT OF VOTES CAST AT A PRIMARY ELECTION HELD ON
TUESDAY, SEPTEMBER 8, A. D. 1914, FOR UNITED STATES
SENATOR.—Continued.

COUNTIES	Chas. S. Thomas (Dem.)	Hubert Work (Rep.)	Isaac N. Stevens (Rep.)	Ben. Griffith (Prog.)
Lake	588	319	379	44
La Plata	671	213	312	14
Larimer	434	537	793	160
Las Animas	1,770	1,535	537	44
Lincoln	316	268	383	10
Logan	349	357	269	177
Mesa	573	165	156	260
Mineral	88	25	26	...
Moffat	84	53	65	6
Montezuma	652	38	50	9
Montrose	706	195	198	33
Morgan	157	619	261	72
Otero	896	460	146	33
Ouray	285	82	70	5
Park	236	47	48	3
Phillips	133	64	104	40
Pitkin	328	47	41	17
Prowers	233	273	62	127
Pueblo	3,747	2,832	406	83
Rio Blanco	153	58	25	3
Rio Grande	195	202	197	11
Routt	301	91	75	12
Saguache	256	163	169	10
San Juan	94	45	96	11
San Miguel	493	105	71	7
Sedgwick	61	64	27	153
Summit	199	35	35	2
Teller	2,381	148	134	125
Washington	345	111	92	26

ABSTRACT OF VOTES CAST AT A PRIMARY ELECTION HELD ON TUESDAY, SEPTEMBER 8, A. D. 1914, FOR UNITED STATES SENATOR.—
Continued

COUNTIES	Chas. S. Thomas (Dem.)	Hubert Work (Rep.)	Isaac N. Stevens (Rep.)	Benj. Griffith (Prog.)
Weld	823	980	836	334
Yuma	292	214	218	40
	37,032	22,413	16,313	5,676

Scattering, Democratic, 25 candidates, 57.

Scattering, Republican, 3 candidates, 4.

Scattering, Progressive, 1 candidate, 1.

Work over Stevens..... 6,100.

ABSTRACT OF VOTES CAST AT A PRIMARY ELECTION HELD ON TUESDAY, SEPTEMBER 8, A. D. 1914, FOR REPRESENTATIVE IN THE SIXTY-FOURTH CONGRESS FOR FIRST CONGRESSIONAL DISTRICT.

Denver County

Benjamin C. Hilliard, Democrat.....	4,314
George Allan Smith, Democrat.....	4,311
Horace Phelps, Republican.....	4,073
Oscar D. Cass, Republican.....	3,591
Albinus A. Johnson, Republican.....	1,130
Bernard J. Ford, Republican.....	464
Archibald A. Lee, Progressive.....	1,971

Scattering, Democratic, 3 candidates, 10.

Hilliard over Smith..... 3

Phelps over Cass..... 482

ABSTRACT OF VOTES CAST AT A PRIMARY ELECTION HELD ON TUESDAY, SEPTEMBER 8, A. D. 1914, FOR REPRESENTATIVE IN THE SIXTY-FOURTH CONGRESS FOR SECOND CONGRESSIONAL DISTRICT.

COUNTIES	H. H. Seldomridge (Dem.)	Chas. B. Timberlake (Rep.)	Jas. W. McCreery (Rep.)	Rice W. Means (Rep.)	F. E. Buck (Rep.)	Dan D. Casement (Prog.)	Chas. E. Fisher (Prog.)	W. H. Caley (Prog.)	Allington H. Kramer (Prog.)
Adams	850	30	26	89	9	3	11	..	50
Arapahoe	546	96	36	78	38	42	58	179	59
Boulder	1,227	344	517	410	356	29	56	13	17
Cheyenne	261	131	21	29	140	1
Douglas	150	129	30	64	28	1	1
Elbert	145	38	23	29	81	...	1	2	1
El Paso	1,659	329	685	535	372	409	96	8	26
Kit Carson	390	69	32	21	225	9	39	7	2
Larimer	409	712	424	145	125	36	91	6	31
Lincoln	308	174	95	64	330	2	9	1	...
Logan	382	652	44	10	32	19	181	10	11
Morgan	153	276	330	185	102	9	50	3	7
Phillips	129	146	2	10	22	7	42	3	7
Sedgwick	57	47	30	5	12	43	103	12	19
Washington	345	140	25	12	32	6	20	1	1

Weld	756	293	1,344	152	204	68	180	25	63
Yuma	273	234	88	48	72	11	29	1	3
	<hr/>	<hr/>	<hr/>	<hr/>	<hr/>	<hr/>	<hr/>	<hr/>	<hr/>
	8,045	3,840	3,752	1,886	2,180	694	966	272	298
Scattering, Democratic, 6 candidates, 32.									
Scattering, Republican, 3 candidates, 2.									
Scattering, Progressive, 1 candidate, 1.									
Timberlake over McCreery.....	88								
Fisher over Casement.....	272								

ABSTRACT OF VOTES CAST AT A PRIMARY ELECTION HELD ON TUESDAY, SEPTEMBER 8, A. D. 1914, FOR REPRESENTATIVE IN THE SIXTY-FOURTH CONGRESS FOR THIRD CONGRESSIONAL DISTRICT.

COUNTIES	Edward Keating (Dem.)	Elmer W. McDaniel (Dem.)	Fred D. Stanley (Rep.)	Edward J. Boughton (Rep.)	J. W. B. Smith (Rep.)	Chas. M. Corlett (Rep.)	Neil N. McLean (Rep.)	Neil N. McLean (Prog.)
Alamosa	363	113	220	10	19	44	6	34
Baca	192	18	58	20	24	14	94	6
Bent	223	96	19	8	9	7	90	40
Clear Creek	348	160	26	11	286	24	19	10
Conejos	257	82	187	29	39	343	22	1
Costilla	87	11	293	22	11	16	15	4
Crowley	255	231	38	50	36	9	34	7
Custer	217	31	16	19	8	5	7	7
Fremont	657	146	111	268	80	39	242	69
Gilpin	195	52	24	17	53	3	14	9
Huerfano	706	62	145	221	32	45	835	34
Jefferson	657	58	313	113	533	71	322	90
Kiowa	150	9	30	25	5	3	23	31
Las Animas	1,960	255	444	981	97	53	534	44
Mineral	99	14	16	7	1	21	4	..

ABSTRACT OF VOTES CAST

Otero	515	864	169	91	103	64	134	33
Park	271	19	29	29	10	10	9	4
Prowers	210	68	21	32	44	20	208	140
Pueblo	3,306	1,761	924	722	206	382	663	86
Rio Grande	149	74	71	23	16	301	32	12
Saguache	286	34	80	33	28	199	12	10
Teller	2,065	508	57	183	24	17	36	112

	13,168	4,666	3,291	2,914	1,664	1,690	3,355	783
--	--------	-------	-------	-------	-------	-------	-------	-----

Scattering, Republican, 4 candidates, 4.
 Scattering, Progressive, 1 candidate, 1.

Keating over McDaniel..... 8,502
 McLean (Republican) over Stanley..... 64

ABSTRACT OF VOTES CAST

ABSTRACT OF VOTES CAST AT A PRIMARY ELECTION HELD ON TUESDAY, SEPTEMBER 8, A. D. 1914, FOR REPRESENTATIVE IN THE SIXTY-FOURTH CONGRESS FOR FOURTH CONGRESSIONAL DISTRICT.

COUNTIES	Edward T. Taylor (Dem.)	H. J. Baird (Rep.)	H. J. Baird (Prog.)
Archuleta	106
Chaffee	370	2	...
Delta	342	58	12
Dolores	116
Eagle	416
Garfield	993	18	...
Grand	73
Gunnison	408	9	...
Hinsdale	35	9	...
Jackson	26
Lake	569	21	...
La Plata.....	672
Mesa	638	21	9
Moffat	90	17	...
Montezuma	685
Montrose	808	31	1
Ouray	297	5	...
Pitkin	386	25	...
Rio Blanco	177	5	...
Routt	312	1	...
San Juan	91
San Miguel	507
Summit	193	4	...
Total	8,310	226	22

Scattering, Democratic, 3 candidates, 3

Scattering, Republican, 21 candidates, 47

Scattering, Progressive, 7 candidates, 22

ABSTRACT OF VOTES CAST

ABSTRACT OF VOTES CAST AT A PRIMARY ELECTION HELD ON TUESDAY, SEPTEMBER 8, A. D. 1914, FOR JUDGE OF SUPREME COURT.

COUNTY	Jas. R. Killian (Dem.)	Jas. H. Teller (Dem.)	Geo. W. Allen (Dem.)	John Campbell (Rep.)	Geo. W. Allen (Rep.)	Joseph C. Ewing (Prog.)
Adams	348	424	325	75	61	52
Alamosa	197	125	129	185	91	34
Arapahoe ...	138	371	247	112	142	267
Archuleta ..	67	26	15	67	75	9
Baca	84	42	63	131	75	5
Bent	139	46	44	86	48	40
Boulder	339	801	302	1,010	531	106
Chaffee	130	145	95	130	55	13
Cheyenne ...	123	81	72	199	110	1
Clear Creek..	133	204	95	170	127	12
Conejos	157	90	58	382	160	1
Costilla	58	22	13	320	37	4
Crowley	167	164	97	97	54	6
Custer	76	96	51	33	17	7
Delta	139	167	52	198	82	307
Denver	2,389	3,030	3,706	4,870	4,567	1,873
Dolores	40	58	17	3	3	7
Douglas	67	72	23	160	82	4
Eagle	155	148	95	164	115	26
Elbert	61	57	42	122	39	4
El Paso.....	594	555	466	1,461	411	493
Fremont ...	260	301	113	524	201	65
Garfield	225	420	278	152	133	32
Gilpin	70	108	52	65	46	9
Grand	14	43	23	94	87	4
Gunnison ..	128	181	105	123	75	6
Hinsdale ...	12	20	4	55	16	...
Huerfano ..	639	65	42	564	708	42
Jackson	5	13	7	47	23	3
Jefferson ...	243	295	128	706	710	93
Kiowa	105	31	14	71	18	30

ABSTRACT OF VOTES CAST AT A PRIMARY ELECTION HELD ON
TUESDAY, SEPTEMBER 8, A. D. 1914, FOR JUDGE OF SUPREME
COURT.—Continued.

COUNTY	Jas. R. Killian (Dem.)	Jas. H. Teller (Dem.)	Geo. W. Allen (Dem.)	John Campbell (Rep.)	Geo. W. Allen (Rep.)	Joseph C. Ewing (Prog.)
Kit Carson..	174	161	88	212	103	53
Lake	313	212	127	352	338	45
La Plata....	207	289	219	244	210	11
Larimer	118	200	132	658	572	151
Las Animas..	1,370	483	218	1,487	506	47
Lincoln	120	136	68	402	229	12
Logan	155	134	118	307	284	176
Mesa	171	290	144	187	118	217
Mineral	27	53	12	33	13	...
Moffat	36	26	22	65	51	5
Montezuma...	242	316	132	54	27	9
Montrose ...	251	343	188	243	138	25
Morgan	66	48	46	403	364	67
Otero	453	414	267	367	195	33
Ouray	62	158	109	114	41	6
Park	69	137	48	63	34	4
Phillips	64	35	41	115	51	41
Pitkin	95	186	80	37	39	15
Prowers	84	98	62	203	117	117
Pueblo	1,600	1,850	1,115	2,086	770	87
Rio Blanco...	54	78	26	56	22	3
Rio Grande..	79	76	47	259	135	12
Routt	101	165	51	94	65	10
Saguache ...	84	150	49	217	109	9
San Juan...	30	45	24	77	62	11
San Miguel..	258	219	121	101	74	4
Sedgwick ...	29	21	16	50	36	153
Summit	99	90	29	47	18	2
Teller	745	1,352	685	186	87	114

ABSTRACT OF VOTES CAST

ABSTRACT OF VOTES CAST AT A PRIMARY ELECTION HELD ON TUESDAY, SEPTEMBER 8, A. D. 1914, FOR JUDGE OF SUPREME COURT.—Continued.

COUNTIES	Jas. R. Killian (Dem.)	Jas. H. Teller (Dem.)	Geo. W. Allen (Dem.)	John Campbell (Rep.)	Geo. W. Allen (Rep.)	Joseph C. Ewing (Prog.)
Washington.	141	105	99	104	91	26
Weld	241	400	224	922	788	324
Yuma	108	118	86	182	209	38
	<hr/>	<hr/>	<hr/>	<hr/>	<hr/>	<hr/>
	14,948	16,589	11,466	22,303	14,795	5,382
	Scattering, Democratic, 2 candidates, 2.					
	Scattering, Republican, 4 candidates, 4.					
	Scattering, Progressive, 2 candidates, 2.					
	Teller over Killian.....					1,641
	Campbell over Allen (Republican).....					7,508

ABSTRACT OF VOTES CAST

ABSTRACT OF VOTES CAST AT A PRIMARY ELECTION HELD ON
TUESDAY, SEPTEMBER 8, A. D. 1914, FOR GOVERNOR.

COUNTY	Thos. M. Patterson (Dem.)	Barnette T. Napier (Dem.)	Sam D. Nicholson (Rep.)	Geo. A. Carlson (Rep.)	Frank C. Goudy (Rep.)	Edward F. Costigan (Prog.)
Adams	714	427	45	63	56	57
Alamosa ...	301	180	116	36	171	35
Arapahoe ...	475	274	148	74	58	317
Archuleta ..	70	38	63	59	45	9
Baca	163	34	85	54	62	6
Bent	161	96	23	76	59	40
Boulder	1,119	437	437	1,330	181	119
Chaffee	267	146	127	36	59	13
Cheyenne ...	164	122	145	106	70	...
Clear Creek.	287	204	141	124	81	13
Conejos	230	97	313	54	382	1
Costilla	70	23	310	20	26	2
Crowley	297	151	53	59	72	7
Custer	157	75	20	8	32	7
Delta	229	151	75	192	96	357
Denver	6,141	3,291	4,344	2,843	3,252	2,195
Dolores	88	47	2	1	2	5
Douglas	124	52	115	73	93	1
Eagle	180	282	203	60	45	29
Elbert	125	38	37	111	35	4
El Paso.....	1,259	517	416	823	825	563
Fremont ...	515	256	270	352	244	84
Garfield	307	885	174	113	58	35
Gilpin	205	51	58	39	49	12
Grand	60	22	118	64	21	4
Gunnison ...	221	226	104	34	86	5
Hinsdale ...	17	23	61	5	22	...
Huerfano ...	679	65	433	791	91	71
Jackson	14	12	32	38	8	3
Jefferson ...	562	150	393	827	424	102
Kiowa	47	109	50	24	16	32
Kit Carson..	263	197	114	149	71	56

ABSTRACT OF VOTES CAST AT A PRIMARY ELECTION HELD ON
TUESDAY, SEPTEMBER 8, A. D. 1914, FOR GOVERNOR.—Continued.

COUNTY	Thos. M. Patterson (Dem.)	Barnette T. Napier (Dem.)	Sam D. Nicholson (Rep.)	Geo. A. Carlson (Rep.)	Frank C. Goudy (Rep.)	Edward P. Costigan (Prog.)
Lake	613	148	1,006	58	39	45
La Plata....	386	366	153	104	254	13
Larimer	328	160	396	1,089	149	165
Las Animas..	1,901	194	1,292	749	245	56
Lincoln	202	137	364	209	121	13
Logan	307	120	162	355	141	191
Mesa	377	278	86	142	129	249
Mineral	68	46	13	2	43	...
Moffat	36	52	45	71	23	6
Montezuma ..	515	237	39	16	38	11
Montrose ...	506	293	55	256	162	29
Morgan	106	60	131	468	334	74
Otero	628	602	193	361	104	33
Ouray	200	169	54	40	71	6
Park	191	89	51	13	46	4
Phillips	100	46	36	122	18	44
Pitkin	249	189	53	26	23	16
Prowers ...	165	91	120	79	169	121
Pueblo	2,863	2,022	872	1,583	817	83
Rio Blanco..	63	116	35	43	15	3
Rio Grande..	154	56	83	125	269	13
Routt	233	126	59	65	50	12
Saguache ...	239	65	112	54	197	11
San Juan....	64	42	98	28	40	12
San Miguel..	385	242	79	32	71	5
Sedgwick ...	39	28	23	22	49	163
Summit	158	75	42	14	16	2

ABSTRACT OF VOTES CAST

ABSTRACT OF VOTES CAST AT A PRIMARY ELECTION HELD ON TUESDAY, SEPTEMBER 8, A. D. 1914, FOR GOVERNOR.—Continued.

COUNTIES	Thos. M. Patterson (Dem.)	Barnette T. Napier (Dem.)	Sam D. Nicholson (Rep.)	Geo. A. Carlson (Rep.)	Frank C. Goudy (Rep.)	Edward F. Costigan (Prog.)
Teller	1,875	1,050	136	72	113	116
Washington..	247	117	92	63	62	29
Weld	721	190	225	1,790	212	357
Yuma	208	110	134	274	50	47
	<hr/>	<hr/>	<hr/>	<hr/>	<hr/>	<hr/>
	29,638	16,194	15,264	16,963	10,862	6,113

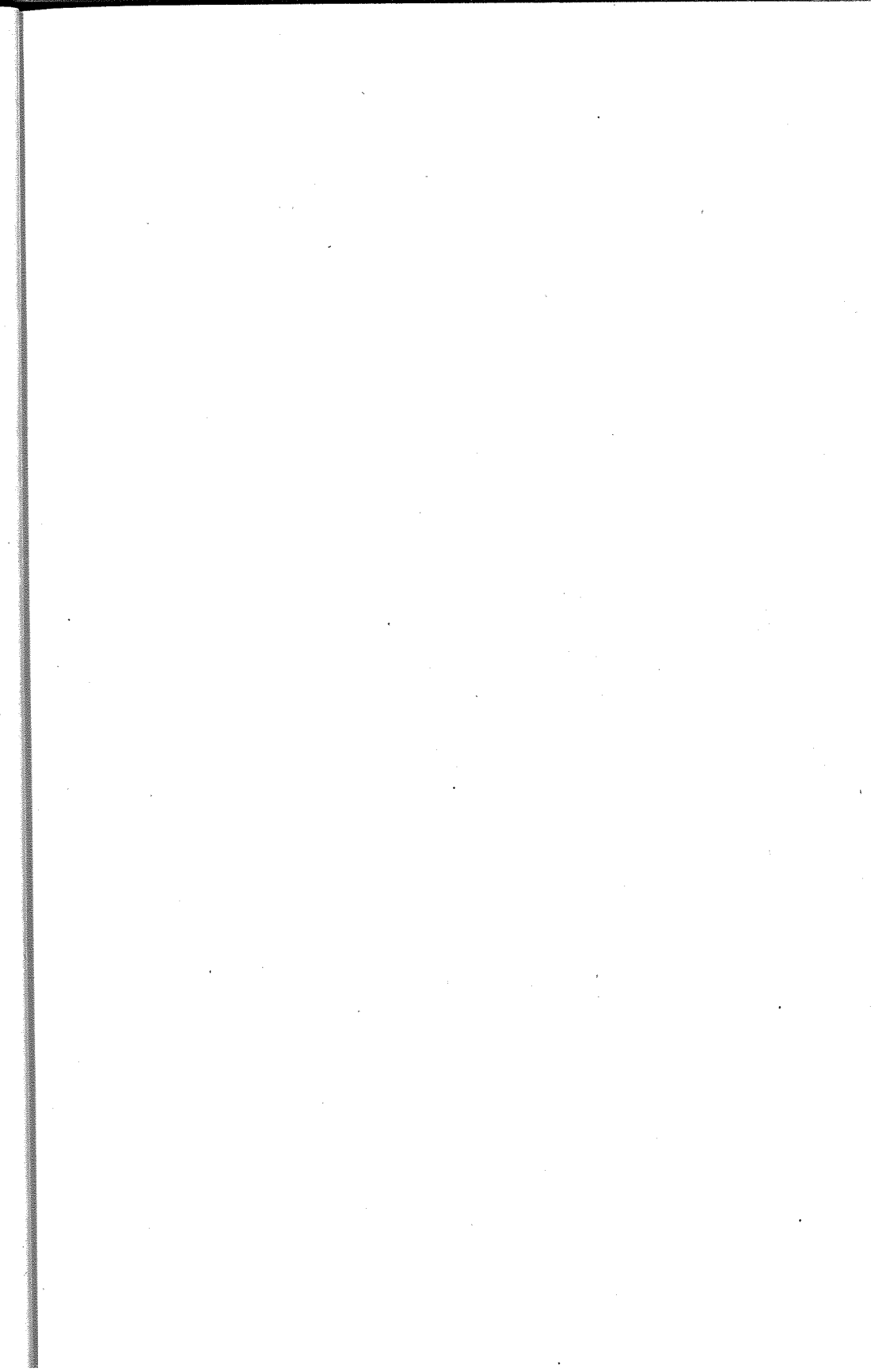
Scattering, Democratic, 13 candidates, 17.

Scattering, Republican, 2 candidates, 4.

Scattering, Progressive, 5 candidates, 8.

Patterson over Napier..... 13,444.

Carlson over Nicholson..... 1,699



ABSTRACT OF VOTES CAST

ABSTRACT OF VOTES CAST AT A PRIMARY ELECTION, HELD ON
TUESDAY, SEPTEMBER 8, A. D. 1914, FOR LIEUTENANT GOVERNOR.

COUNTY	John J. Tobin (Dem.)	Louis Vogt (Dem.)	Moses E. Lewis (Rep.)	Marshall E. Smith (Rep.)	P. H. Troutman (Prog.)	H. H. Harbaugh (Prog.)
Adams	635	297	53	78	31	18
Alamosa	322	104	159	96	28	6
Arapahoe ...	475	132	124	103	206	66
Archuleta ...	79	21	53	85	8	...
Baca	141	41	104	78	4	1
Bent	182	51	52	66	31	9
Boulder	1,114	230	859	592	85	29
Chaffee	292	79	104	59	7	4
Cheyenne ...	114	175	158	132
Clear Creek..	324	76	151	147	9	3
Conejos	218	41	267	170	2	...
Costilla	76	12	308	52	4	...
Crowley	349	83	84	61	7	1
Custer	154	55	33	15	6	1
Delta	306	50	139	123	238	59
Denver	5,229	2,401	3,357	5,298	1,598	345
Dolores	107	11	...	5	5	2
Douglas	130	23	142	88	3	1
Eagle	304	81	127	126	20	7
Elbert	106	54	66	92	2	2
El Paso.....	1,201	331	1,199	472	396	112
Fremont	520	143	616	142	64	20
Garfield	698	210	158	114	31	5
Gilpin	148	63	58	56	9	1
Grand	65	14	79	97	2	2
Gunnison ...	298	103	111	86	1	3
Hinsdale ...	32	4	39	23
Huerfano ...	669	55	959	178	32	13
Jackson	18	4	42	28	2	2
Jefferson ...	539	90	568	724	73	19
Kiowa	50	93	53	31	24	4
Kit Carson..	275	249	165	136	44	5

ABSTRACT OF VOTES CAST AT A PRIMARY ELECTION HELD ON
TUESDAY, SEPTEMBER 8, A. D. 1914, FOR LIEUTENANT GOVERNOR.
—Continued.

COUNTIES	John J. Tobin (Dem.)	Louis Vogt (Dem.)	Moses E. Lewis (Rep.)	Marshall B. Smith (Rep.)	P. H. Troutman (Prog.)	H. H. Harbaugh (Prog.)
Lake	502	122	343	297	30	13
La Plata ...	484	195	214	210	12	1
Larimer	356	72	611	474	120	34
Las Animás..	1,749	167	1,313	606	36	15
Lincoln	218	132	364	257	8	4
Logan	273	116	289	273	117	61
Mesa	511	117	173	114	159	58
Mineral	78	10	25	22
Moffat	61	22	77	38	4	2
Montezuma..	517	164	44	37	6	3
Montrose ...	714	217	194	168	21	6
Morgan	115	40	374	341	44	26
Otero	793	302	384	169	21	13
Ouray	294	52	72	56	3	1
Park	211	49	65	26	2	1
Phillips	60	82	107	51	37	12
Pitkin	228	88	39	37	14	1
Prowers	169	64	167	133	101	17
Pueblo	2,598	1,682	1,835	886	56	31
Río Blanco..	115	25	36	34	2	1
Río Grande..	163	24	194	175	9	1
Routt	252	54	84	58	9	1
Saguache ...	216	40	151	146	8	2
San Juan....	72	23	69	64	9	2
San Miguel..	551	88	84	73	4	...
Sedgwick ...	35	26	47	34	135	26
Summit	170	30	35	26	2	...
Teller	1,449	1,005	199	80	95	26
Washington..	202	143	123	69	16	6

ABSTRACT OF VOTES CAST

ABSTRACT OF VOTES CAST AT A PRIMARY ELECTION HELD ON
TUESDAY, SEPTEMBER 8, A. D. 1914, FOR LIEUTENANT GOVERNOR.
—Continued.

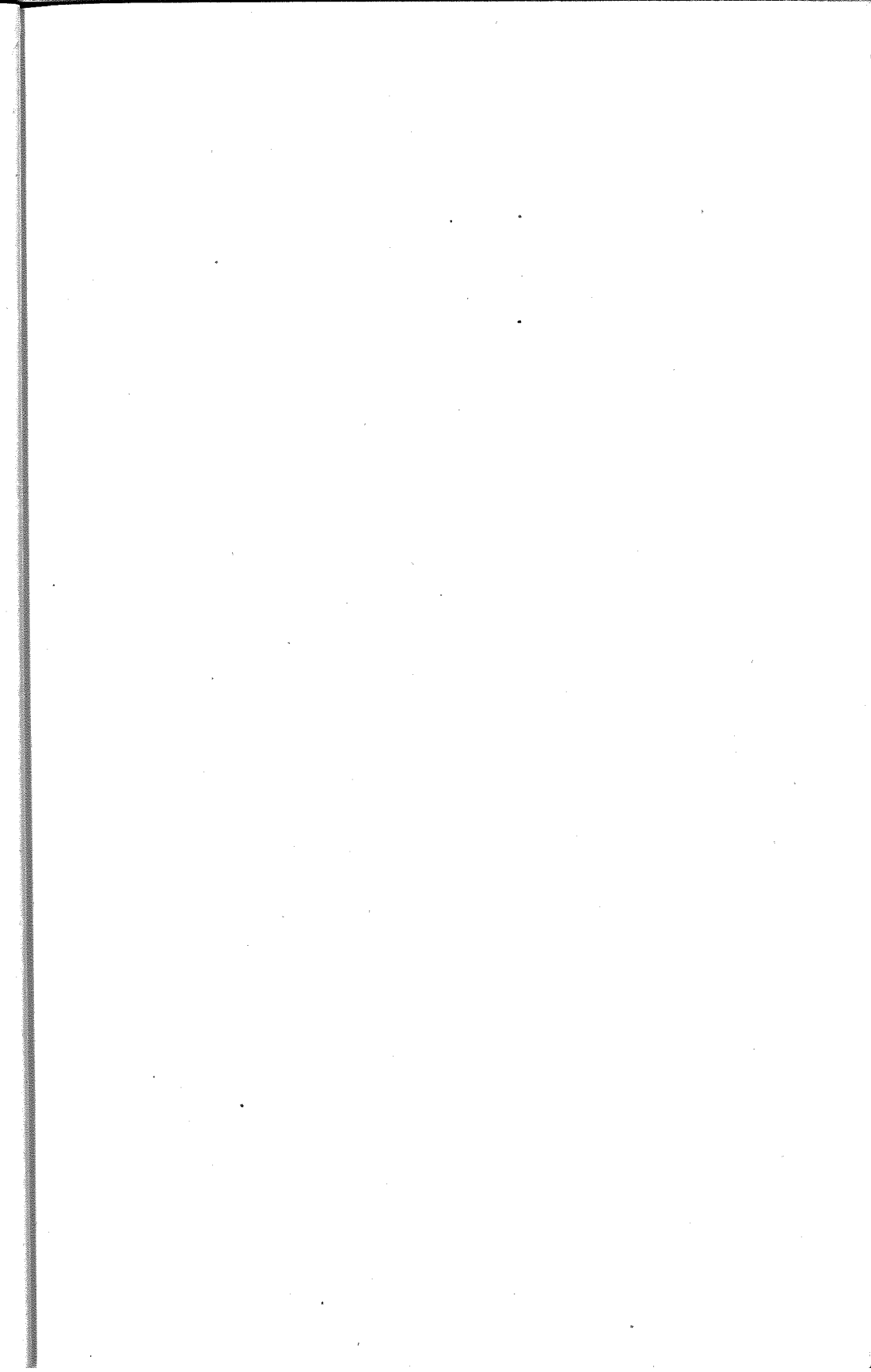
COUNTIES	John J. Tobin (Dem.)	Louis Vogt (Dem.)	Moses E. Lewis (Rep.)	Marshall E. Smith (Rep.)	P. H. Troutman (Prog.)	H. H. Harbaugh (Prog.)
Weld	694	122	836	795	127	237
Yuma	211	107	188	152	30	12
	<hr/>	<hr/>	<hr/>	<hr/>	<hr/>	<hr/>
	29,231	10,756	19,123	15,454	4,209	1,353

Scattering, Democratic, 10 candidates, 10.

Scattering, Republican, 2 candidates, 2.

Scattering, Progressive, 2 candidates, 2.

Tobin over Vogt.....	18,475
Lewis over Smith.....	3,669
Troutman over Harbaugh.....	2,856



ABSTRACT OF VOTES CAST AT A PRIMARY ELECTION HELD ON
TUESDAY, SEPTEMBER 8, A. D. 1914, FOR SECRETARY OF STATE.

COUNTY	Edwin V. Brake (Dem.)	Agnes O'Day (Dem.)	Thomas F. Dillon, Jr. (Dem.)	Thomas M. Hunter (Dem.)	John E. Ramer (Rep.)	Adolph Unfug (Rep.)	Agnes L. Riddle (Prog.)
Adams	227	249	147	419	82	41	52
Alamosa	162	126	82	98	112	153	32
Arapahoe	175	136	75	300	138	88	308
Archuleta	17	31	16	46	102	33	7
Baca	75	42	16	47	166	29	5
Bent	41	37	18	136	108	25	40
Boulder	318	1,211	27	124	1,069	470	114
Chaffee	120	103	57	108	108	64	12
Cheyenne	60	57	68	98	199	99	1
Clear Creek	101	161	36	139	193	117	12
Conejos	83	69	84	48	211	237	1
Costilla	35	32	15	11	123	235	5
Crowley	151	113	65	90	112	48	6
Custer	75	45	30	64	27	30	7
Delta	83	92	48	135	305	25	333

ABSTRACT OF VOTES CAST

Denver	2,472	1,042	1,551	4,202	5,568	3,197	1,629
Dolores	42	28	13	26	...	4	5
Douglas	45	42	32	36	162	73	4
Eagle	90	112	59	133	183	69	28
Elbert	44	44	28	49	91	65	6
El Paso	701	344	191	463	947	742	508
Fremont	336	127	54	216	423	295	74
Garfield	278	240	143	288	222	62	34
Gilpin	58	92	13	74	80	33	10
Grand	11	24	24	20	127	60	4
Gunnison	135	136	45	110	146	53	6
Hinsdale	12	10	3	12	50	17	1
Huerfano	531	80	25	36	160	1,194	45
Jackson	6	7	4	6	78	1	3
Jefferson	271	120	84	173	758	555	94
Kiowa	24	27	88	18	74	13	29
Kit Carson	110	116	129	79	222	80	54
Lake	230	255	65	120	456	186	41
La Plata	188	241	114	189	285	152	12
Larimer	104	133	32	198	1,290	126	158
Las Animas	1,618	228	69	145	516	1,530	43
Lincoln	96	102	51	81	471	139	11
Logan	204	72	66	67	482	87	177
Mesa	166	116	79	237	222	82	231

ABSTRACT OF VOTES CAST

ABSTRACT OF VOTES CAST AT A PRIMARY ELECTION HELD ON
TUESDAY, SEPTEMBER 8, A. D. 1914. FOR SECRETARY OF STATE.

—Continued.

COUNTIES.	Edwin V. Brae (Dem.)	Agnes O'Day (Dem.)	Thomas F. Dillon, Jr. (Dem.)	Thomas M. Hunter (Dem.)	John E. Ramer (Rep.)	Adolph Unfug (Rep.)	Agnes L. Riddle (Prog.)
Mineral	30	17	12	27	28	21	5
Moffat	20	31	18	22	100	12	8
Montezuma	252	172	110	160	59	19	26
Montrose	194	180	125	264	287	95	101
Morgan	52	52	12	49	532	180	30
Otero	285	232	188	415	424	150	5
Ouray	70	58	36	164	104	38	4
Park	73	58	56	69	82	12	42
Phillips	58	17	17	43	138	17	42
Pitkin	80	88	64	112	60	16	18
Prowers	88	79	23	56	168	148	123
Pueblo	1,872	741	848	1,224	1,582	1,450	88
Rio Blanco	40	23	25	69	60	9	3
Rio Grande	80	57	26	31	241	132	10
Routt	101	80	38	96	113	33	10

ABSTRACT OF VOTES CAST

Saguache	71	72	44	75	214	93	11
San Juan	28	30	11	33	75	61	13
San Miguel	176	146	47	154	127	34	4
Sedgwick	22	13	6	18	76	11	153
Summit	57	53	26	74	38	21	2
Teller	729	717	295	902	197	81	101
Washington	140	80	40	88	171	21	27
Weld	226	291	73	284	1,317	323	324
Yuma	131	71	33	71	310	44	42
	14,370	9,600	5,919	13,341	22,571	13,530	5,292

Scattering, Democratic, 2 candidates, 2.

Scattering, Progressive, 15 candidates, 15.

Brake over Hunter..... 1,029.

Ramer over Unfug..... 9,041.

ABSTRACT OF VOTES CAST AT A PRIMARY ELECTION HELD ON
TUESDAY, SEPTEMBER 8, A. D. 1914, FOR AUDITOR OF STATE.

COUNTY	Charles H. Leckenby (Dem.)	T. D. Foster (Dem.)	Benjamin C. Catren, Jr. (Rep.)	Albion K. Vickery (Rep.)	Henry E. Muir (Rep.)	W. E. Buck (Prog.)
Adams	467	419	32	42	49	...
Alamosa ...	194	199	74	108	56	...
Arapahoe ..	299	279	82	72	89	...
Archuleta ..	62	40	73	22	35	...
Baca	121	65	103	47	36	...
Bent	139	86	108	32	34	...
Boulder	683	645	497	399	509	...
Chaffee	206	162	62	33	68	...
Cheyenne ..	132	147	150	76	73	...
Clear Creek..	216	183	294	23	18	...
Conejos	155	106	169	85	132	...
Costilla	63	24	278	16	55	...
Crowley	235	158	67	42	32	...
Custer	128	74	20	8	26	...
Delta	171	162	123	84	78	20
Denver	4,185	3,267	2,212	2,954	3,792	53
Dolores	39	64	...	3	3	...
Douglas	77	71	76	45	111	...
Eagle	225	151	73	63	136	...
Elbert	90	63	74	40	36	...
El Paso	661	832	884	391	361	20
Fremont ...	369	284	198	90	419	...
Garfield	480	394	72	97	102	...
Gilpin	91	108	62	18	28	...
Grand	53	18	92	34	47	...
Gunnison ...	182	169	56	35	93	...
Hinsdale ...	18	17	35	10	24	...
Huerfano ..	179	487	204	753	200	...
Jackson	19	6	31	13	23	...
Jefferson ...	392	211	700	258	339	...
Kiowa	115	29	57	14	18	...

ABSTRACT OF VOTES CAST AT A PRIMARY ELECTION HELD ON
TUESDAY, SEPTEMBER 8, A. D. 1914, FOR AUDITOR OF STATE.
—Continued.

COUNTIES.	Charles H. Leckenby (Dem.)	T. D. Foster (Dem.)	Benjamin C. Catren, Jr. (Rep.)	Albion K. Vickery (Rep.)	Henry E. Mulnix (Rep.)	W. E. Buck (Prof.)
Kit Carson..	224	174	154	70	74	...
Lake	290	275	248	67	385	...
La Plata....	345	309	129	73	233	...
Larimer	238	184	534	259	323	...
Las Animas..	547	1,350	557	258	1,203	...
Lincoln	185	123	250	195	154	...
Logan	169	178	252	166	113	...
Mesa	260	310	82	78	159	...
Mineral	55	32	15	21	14	...
Moffat	72	20	54	22	23	...
Montezuma...	468	233	13	9	67	...
Montrose ...	269	451	103	58	227	...
Morgan	80	77	274	171	275	...
Otero	510	509	247	96	187	...
Ouray	134	163	48	35	65	...
Park	115	111	23	21	60	...
Phillips	56	78	73	40	45	...
Pitkin	163	168	20	22	41	...
Prowers	120	108	175	84	59	...
Pueblo	2,142	2,084	1,098	406	1,227	1
Rio Blanco..	119	37	38	23	13	...
Rio Grande..	113	68	152	97	125	...
Routt	304	73	55	53	47	...
Saguache ...	135	118	125	72	93	...
San Juan....	51	39	50	23	63	...
San Miguel..	216	305	47	31	76	...
Sedgwick ..	31	25	47	22	14	...
Summit	114	85	29	11	23	...
Teller	833	1,892	88	104	88	...

ABSTRACT OF VOTES CAST AT A PRIMARY ELECTION HELD ON
TUESDAY, SEPTEMBER 8, A. D. 1914, FOR AUDITOR OF STATE.—
Continued.

COUNTIES.	Charles H. Leckenby (Dem.)	T. D. Foster (Dem.)	Benjamin C. Catren, Jr. (Rep.)	Albion K. Vickery (Rep.)	Henry E. Mulnix (Rep.)	W. E. Buck (Prog.)
Washington..	147	175	103	50	33	..
Weld	398	403	627	519	434	..
Yuma	154	142	195	75	64	..
	<hr/> 19,503	<hr/> 19,219	<hr/> 12,863	<hr/> 9,138	<hr/> 13,029	<hr/> 94

Scattering, Democratic, 3 candidates, 3.

Scattering, Republican, 2 candidates, 2.

Scattering, Progressive, 45 candidates, 81.

Leckenby over Foster..... 284

Mulnix over Catren, Jr. 166

ABSTRACT OF VOTES CAST

ABSTRACT OF VOTES CAST AT A PRIMARY ELECTION HELD ON
TUESDAY, SEPTEMBER 8, A. D. 1914, FOR STATE TREASURER.

COUNTY	James B. Orman (Dem.)	W. W. Rowan (Dem.)	Roady Kenehan (Dem.)	Allison Stocker (Rep.)	Lewis C. Greenlee (Rep.)	F. L. Cretney (Prog.)
Adams	411	158	442	75	55	46
Alamosa	161	84	205	151	89	30
Arapahoe	284	96	306	127	110	252
Archuleta	41	17	52	53	88	8
Baca	105	31	48	118	73	5
Bent	157	28	61	77	48	39
Boulder	566	200	708	736	706	91
Chaffee	146	88	161	101	57	11
Cheyenne	95	96	93	132	159	1
Clear Creek.. . . .	165	59	222	128	142	12
Conejos	136	39	127	265	148	2
Costilla	47	18	22	110	245	4
Crowley	283	70	75	80	70	4
Custer	124	37	71	17	25	7
Delta	169	103	108	179	100	300
Denver	2,396	1,445	5,200	3,644	5,790	1,763
Dolores	41	22	61	2	2	6
Douglas	78	21	67	130	107	3
Eagle	157	69	201	134	118	28
Elbert	55	32	74	79	75	4
El Paso.....	693	284	776	894	783	465
Fremont	298	94	369	411	272	69
Garfield	445	137	382	131	142	27
Gilpin	73	27	140	57	45	6
Grand	45	5	26	96	75	3
Gunnison	122	83	216	94	80	4
Hinsdale	12	18	8	36	36	...
Huerfano	143	41	523	967	260	39
Jackson	16	1	6	39	29	3
Jefferson	190	76	382	634	665	84
Kiowa	116	16	20	67	22	30
Kit Carson.. . . .	173	85	165	165	129	50

ABSTRACT OF VOTES CAST

ABSTRACT OF VOTES CAST AT A PRIMARY ELECTION HELD ON
TUESDAY, SEPTEMBER 8, A. D. 1914, FOR STATE TREASURER.
—Continued.

COUNTIES	James B. Orman (Dem.)	W. W. Rowan (Dem.)	Roady Kenchan (Dem.)	Allison Stocker (Rep.)	Lewis C. Greenlee (Rep.)	F. L. Cretney (Prog.)
Lake	145	76	472	382	246	42
La Plata....	235	159	357	228	175	14
Larimer	267	67	133	642	488	135
Las Animas.	336	108	1,591	996	831	45
Lincoln	135	76	108	343	260	11
Logan	128	61	205	321	229	150
Mesa	207	151	289	170	119	198
Mineral	29	9	68	22	23	...
Moffat	45	24	18	70	42	6
Montezuma .	357	111	254	42	39	7
Montrose ...	353	255	242	201	162	22
Morgan	64	31	66	312	408	69
Otero	569	290	292	271	281	29
Ouray	48	264	101	70	64	4
Park	128	34	104	46	47	3
Phillips	49	32	61	103	54	43
Pitkin	112	53	222	48	26	15
Prowers	148	33	69	155	143	121
Pueblo	3,453	314	1,429	1,609	1,169	80
Rio Blanco..	103	22	40	38	37	2
Rio Grande.	84	51	64	174	181	11
Routt	169	45	112	80	71	12
Saguache ...	116	52	112	155	123	8
San Juan...	17	33	52	64	59	11
San Miguel.	217	165	206	73	82	4
Sedgwick ..	30	10	19	54	30	142
Summit	86	40	92	34	27	1
Teller	996	620	1,152	115	151	111
Washington	129	96	108	125	62	22

ABSTRACT OF VOTES CAST

ABSTRACT OF VOTES CAST AT A PRIMARY ELECTION HELD ON
TUESDAY, SEPTEMBER 8, A. D. 1914, FOR STATE TREASURER.—
Continued.

COUNTIES	James B. Orman (Dem.)	W. W. Rowan (Dem.)	Roady Kenehan (Dem.)	Allison Stocker (Rep.)	Lewis C. Greenlee (Rep.)	F. L. Cretney (Prog.)
Weld	401	158	310	765	823	294
Yuma	132	89	81	165	191	36
Totals ...	17,231	7,109	19,746	17,802	17,388	5,044

Scattering, Democratic, 1 candidate, 3.

Kenehan over Orman.....2,515
Stocker over Greenlee 414

ABSTRACT OF VOTES CAST

ABSTRACT OF VOTES CAST AT A PRIMARY ELECTION HELD ON
TUESDAY, SEPTEMBER 8, A. D. 1914, FOR ATTORNEY GENERAL.

COUNTIES	Fred Farrar (Dem.)	John I. Mullins (Dem.)	T. S. McChesney (Dem.)	Wm. B. Gobin (Rep.)	Floyd E. Pendell (Rep.)	Rees D. Rees (Rep.)	Merle D. Vincent (Prog.)
Adams	590	305	49	39	39	45	44
Alamosa	253	135	31	124	56	63	32
Arapahoe	386	200	50	80	40	96	259
Archuleta	90	4	18	36	26	77	8
Baca	100	55	31	111	44	38	5
Bent	186	36	23	84	22	20	38
Boulder	820	419	147	409	767	281	106
Chaffee	224	117	29	69	29	49	9
Cheyenne	165	70	33	133	70	82	...
Clear Creek	227	138	44	112	57	92	11
Conejos	179	71	24	201	93	133	1
Costilla	66	14	6	80	26	243	4
Crowley	300	83	40	133	10	18	4
Custer	115	55	28	23	7	12	7
Delta	254	74	24	126	92	49	377
Denver	3,896	4,644	513	2,353	1,217	5,025	1,934
Dolores	69	22	5	1	3	2	7
Douglas	103	34	14	117	39	64	4
Eagle	230	101	46	84	72	78	28
Elbert	94	52	11	60	21	75	4
El Paso	864	464	210	956	322	299	541
Fremont	396	201	69	306	161	204	68
Garfield	505	265	81	77	49	135	29
Gilpin	106	76	27	33	30	41	9
Grand	50	16	6	63	39	57	3
Gunnison	195	138	30	84	44	45	5
Hinsdale	24	8	...	42	8	12	...
Huerfano	198	305	158	950	120	126	41
Jackson	18	1	3	35	15	14	3
Jefferson	365	210	39	293	561	423	91
Kiowa	131	16	2	52	26	9	29
Kit Carson	254	112	41	122	77	91	52

ABSTRACT OF VOTES CAST AT A PRIMARY ELECTION HELD ON
TUESDAY, SEPTEMBER 8, A. D. 1914, FOR ATTORNEY GENERAL
—Continued.

COUNTIES	Fred Farrar (Dem.)	John I. Mullins (Dem.)	T. S. McChesney (Dem.)	Wm. B. Gobin (Rep.)	Floyd E. Pendell (Rep.)	Rees D. Rees (Rep.)	Merle D. Vincent (Prog.)
Lake	231	377	29	254	119	214	42
La Plata	397	215	88	170	88	149	13
Larimer	421	49	13	395	406	249	142
Las Animas....	255	268	1,486	1,003	334	493	41
Lincoln	195	86	32	257	189	142	12
Logan	196	141	28	195	255	79	163
Mesa	370	153	49	125	68	84	228
Mineral	69	15	7	19	6	16	...
Moffat	55	16	10	67	25	19	6
Montezuma ...	427	152	69	37	24	15	8
Montrose	455	222	67	159	98	100	31
Morgan	116	30	8	93	735	67	69
Otero	777	201	119	411	121	67	32
Ouray	198	95	23	61	23	47	4
Park	154	89	15	38	23	32	4
Phillips	84	39	10	62	66	28	41
Pitkin	199	91	39	32	17	21	16
Prowers	166	26	37	201	42	74	114
Pueblo	2,637	1,391	492	1,399	478	892	86
Rio Blanco....	89	36	15	24	38	12	2
Rio Grande....	157	19	13	134	122	95	10
Routt	201	47	51	66	36	39	10
Saguache	179	61	20	154	79	49	11
San Juan	59	21	12	54	25	38	13
San Miguel....	359	132	46	75	42	36	5
Sedgwick	35	18	4	37	24	22	143
Summit	133	57	9	25	7	20	2
Teller	1,496	703	314	92	62	101	112
Washington ...	230	68	34	89	55	36	23

ABSTRACT OF VOTES CAST

ABSTRACT OF VOTES CAST AT A PRIMARY ELECTION HELD ON
TUESDAY, SEPTEMBER 8, A. D. 1914, FOR ATTORNEY GENERAL.
—Continued.

COUNTIES	Fred Farrar (Dem.)	John I. Mullins (Dem.)	T. S. McChesney (Dem.)	Wm. B. Gobin (Rep.)	Floyd E. Pendell (Rep.)	Rees D. Rees (Rep.)	Merle D. Vincent (Prog.)
Weld	578	212	62	703	472	407	318
Yuma	186	80	28	152	99	68	37
Totals	22,557	13,551	5,061	13,971	8,360	11,709	5,491
Scattering, Democratic, 3 candidates, 3							
Scattering, Republican, 2 candidates, 2							
Farrar over Mullins.....9,006							
Gobin over Rees.....2,262							

ABSTRACT OF VOTES CAST AT A PRIMARY ELECTION HELD ON
TUESDAY, SEPTEMBER 8, A. D. 1914, FOR SUPERINTENDENT OF
PUBLIC INSTRUCTION.

COUNTIES	Mary C. C. Bradford (Dem.)	Katherine L. Craig (Rep.)	Florence E. Dick (Prog.)	Mary E. Todd (Prog.)
Adams	891	123	21	25
Alamosa	371	233	19	13
Arapahoe	568	215	170	102
Archuleta	91	132	1	5
Baca	186	203	4	...
Bent	214	120	27	10
Boulder	1,289	1,389	77	37
Chaffee	348	157	4	5
Cheyenne	260	285	1	...
Clear Creek	353	263	5	6
Conejos	246	415	1	...
Costilla	78	333	3	1
Crowley	358	156	5	1
Custer	196	46	8	...
Delta	326	285	208	95
Denver	6,415	7,684	1,132	812
Dolores	113	4	2	5
Douglas	153	231	3	...
Eagle	314	245	22	6
Elbert	148	167	1	3
El Paso	1,497	1,619	364	141
Fremont	589	673	44	25
Garfield	822	246	21	11
Gilpin	181	104	5	4
Grand	67	148	1	1
Gunnison	342	189	3	2
Hinsdale	36	56
Huerfano	626	1,194	26	11
Jackson	24	66	...	3
Jefferson	581	1,286	66	31
Kiowa	152	82	19	13

ABSTRACT OF VOTES CAST AT A PRIMARY ELECTION HELD ON
TUESDAY, SEPTEMBER 8, A. D. 1914, FOR SUPERINTENDENT OF
PUBLIC INSTRUCTION.—Continued.

COUNTIES	Mary C. C. Bradford (Dem.)	Katherine L. Craig (Rep.)	Florence E. Dick (Prog.)	Mary E. Todd (Prog.)
Kit Carson	416	298	30	24
Lake	542	570	30	14
La Plata	630	411	10	4
Larimer	420	1,134	91	59
Las Animas	1,766	1,775	33	18
Lincoln	312	586	5	6
Logan	361	545	88	88
Mesa	560	279	142	71
Mineral	81	43
Moffat	85	110	4	1
Montezuma	637	79	9	1
Montrose	704	386	23	4
Morgan	153	699	44	23
Otero	983	552	22	11
Ouray	273	132	2	4
Park	242	89	2	1
Phillips	143	144	35	12
Pitkin	313	74	10	5
Prowers	219	283	80	43
Pueblo	3,907	2,570	59	27
Rio Blanco	145	74	3	...
Rio Grande	179	356	7	4
Routt	265	147	4	4
Saguache	242	272	10	2
San Juan	77	101	8	3
San Miguel	479	146	4	3
Sedgwick	57	94	127	46
Summit	188	55	...	2
Teller	2,159	276	86	33
Washington	343	172	17	7

ABSTRACT OF VOTES CAST AT A PRIMARY ELECTION HELD ON
TUESDAY, SEPTEMBER 8, A. D. 1914, FOR SUPERINTENDENT OF
PUBLIC INSTRUCTION.—Continued.

COUNTIES	Mary C. C. Bradford (Dem.)	Katherine L. Craig (Rep.)	Florence E. Dick (Prog.)	Mary E. Todd (Prog.)
Weld	795	1,613	212	109
Yuma	293	369	33	9
	<hr/>	<hr/>	<hr/>	<hr/>
	35,804	32,783	3,493	2,006

Scattering, Democratic, 23 candidates, 29

Scattering, Republican, 11 candidates, 14

Scattering, Progressive, 4 candidates, 5

Dick over Todd..... 1,487

ABSTRACT OF VOTES CAST AT A PRIMARY ELECTION HELD ON
TUESDAY, SEPTEMBER 8, A. D. 1914, FOR REGENTS OF THE UNI-
VERSITY OF COLORADO, FOR THE FULL TERM.

COUNTY	Minnie L. Harding (Dem.)	E. D. Webb (Dem.)	Clifford C. Parks (Rep.)	Thomas L. Wilkinson (Rep.)	Randolph Cook (Prog.)	E. Stewart (Prog.)
Adams	719	...	79	36	42	...
Alamosa ...	319	...	162	70	28	...
Arapahoe ...	434	2	151	102	239	...
Archuleta ..	81	...	62	72
Baca	171	...	152	101	5	...
Bent	186	...	93	69	35	...
Boulder	1,099	64	1,164	923	96	...
Chaffee	330	...	114	54	8	...
Cheyenne ...	233	...	173	145
Clear Creek..	297	...	185	68	11	...
Conejos	210	...	301	156
Costilla	75	...	301	144
Crowley	304	...	130	90	4	...
Custer	167	...	31	21	6	...
Delta	288	...	191	131	287	...
Denver	5,109	2	5,184	5,329	1,683	...
Dolores	85	...	2	4	5	...
Douglas	135	...	179	117	3	...
Eagle	322	...	194	108	23	...
Elbert	135	...	124	91	4	...
El Paso	1,271	...	1,258	838	410	...
Fremont ...	536	...	445	408	59	...
Garfield	709	...	241	112	26	...
Gilpin	156	...	61	43	10	...
Grand	68	...	118	43	3	...
Gunnison ...	293	...	141	86	5	...
Hinsdale ...	33	...	47	30
Huerfano ...	582	...	984	835	30	...
Jackson	23	...	50	21	3	...
Jefferson ...	504	...	925	716	85	...
Kiowa	138	...	73	46	31	...

ABSTRACT OF VOTES CAST

ABSTRACT OF VOTES CAST AT A GENERAL ELECTION HELD ON TUESDAY, SEPTEMBER 8, A. D. 1914, FOR REGENTS OF THE UNIVERSITY OF COLORADO, FOR THE FULL TERM.—Continued.

COUNTY	Minnie L. Harding (Dem.)	E. D. Webb (Dem.)	Clifford C. Parks (Dem.)	Thomas L. Wilkinson (Rep.)	Randolph Cook (Prog.)	C. E. Stewart (Prog.)
Kit Carson..	366	...	183	169	52	...
Lake	470	...	412	279	39	...
La Plata....	76	...	318	205	12	...
Larimer	366	...	762	586	133	...
Las Animas..	1,658	...	1,346	422	46	...
Lincoln	296	...	435	309	10	...
Logan	331	...	417	191	150	3
Mesa	490	...	251	107	199	...
Mineral	68	...	34	7
Moffat	75	...	75	48	5	...
Montezuma...	545	...	48	34	8	...
Montrose ...	642	...	257	107	25	...
Morgan	135	...	537	312	63	22
Otero	875	...	441	354	30	...
Ouray	234	...	95	53	3	...
Park	210	...	65	50	3	...
Phillips	130	...	117	67	36	...
Pitkin	247	...	63	39	15	...
Prowers	213	...	245	174	115	...
Pueblo	3,543	...	2,155	1,601	77	...
Rio Blanco...	135	...	70	29	3	...
Rio Grande..	149	...	248	174	9	...
Routt	229	...	122	71	7	...
Saguache ...	234	...	208	133	9	...
San Juan....	74	...	83	58	11	...
San Miguel..	426	...	114	25	2	...
Sedgwick ..	48	...	64	36	137	...
Summit	167	...	49	27	1	...
Teller	1,781	...	212	162	97	...
Washington..	304	...	135	65	22	...

ABSTRACT OF VOTES CAST AT A PRIMARY ELECTION HELD ON
TUESDAY, SEPTEMBER 8, A. D. 1914, FOR REGENTS OF THE UNI-
VERSITY OF COLORADO, FOR THE FULL TERM.—Continued.

COUNTY	Minnie L. Harding (Dem.)	E. D. Webb (Dem.)	Clifford C. Parks (Rep.)	Thomas L. Wilkinson (Rep.)	Randolph Cook (Prog.)	C. E. Stewart (Prog.)
Weld	705	...	1,240	983	289	...
Yuma	256	...	228	80	30	4
	<hr/> 30,490	<hr/> 68	<hr/> 24,344	<hr/> 17,966	<hr/> 4,777	<hr/> 29

Scattering, Democratic, 99 candidates, 187

Scattering, Republican, 20 candidates, 35

Scattering, Progressive, 25 candidates, 69

ABSTRACT OF VOTES CAST AT A PRIMARY ELECTION HELD ON TUESDAY, SEPTEMBER 8, A. D. 1914, FOR REGENT OF THE UNIVERSITY OF COLORADO, TO FILL VACANCY.

COUNTIES	E. D. Webb (Dem.)	Walter M. Appel (Dem.)	A. D. Parker (Rep.)	Thomas L. Wilkinson (Rep.)	Chas. R. Dudley (Rep.)	C. E. Stewart (Prog.)	Randolph Cook (Prog.)
Boulder	127	...	64
Denver	8	5	...	31	19	5	5
Jefferson	1	...
Logan	6	...
Pueblo	2
Routt	20
Washington	4	...
	155	5	66	31	19	16	5

Scattering, Democratic, 103 candidates, 196

Scattering, Republican, 112 candidates, 202

Scattering, Progressive, 36 candidates, 48

There having been no candidates designated, the above were written in by the voters, which accounts for so few counties shown as having made returns.

ABSTRACT OF VOTES CAST

ABSTRACT OF VOTES CAST AT A GENERAL ELECTION HELD ON
TUESDAY, NOVEMBER 3, A. D. 1914, FOR DISTRICT JUDGE, OF
TWELFTH JUDICIAL DISTRICT (TO FILL VACANCY).

COUNTIES	John S. Palmer (Law)	Jesse C. Wiley (Ind.)
Alamosa	707	642
Conejos	854	846
Costilla	557	273
Mineral	142	240
Rio Grande	660	1,279
Saguache	878	761
Totals.....	3,798	4,041
Majority for Wiley over Palmer.....		243

ABSTRACT OF VOTES CAST AT A GENERAL ELECTION HELD ON
TUESDAY, NOVEMBER 3, A. D. 1914, FOR STATE SENATORS FROM
THE FIRST SENATORIAL DISTRICT.

City and County of Denver.

Julius Aichele, Democratic	15,148
T. J. Brown, Socialist.....	3,660
Frank L. Dodge, Republican.....	25,476
William R. Eaton, Republican.....	25,283
Harvey E. Garman, no ass'by.....	5,483
Charles B. Hamilton, Democratic.....	22,796
Barney Haughey, no ass'by.....	702
John Hecker, L., O. and J.....	3,125
John E. Holmberg, Republican.....	22,182
Hattie K. Howard, Progressive.....	6,732
Francis J. Knauss, Republican	24,029
Charles N. Knowles, Progressive	9,022
Nicholas Ludwig, no ass'by.....	2,130
Phillip McCarty, Democratic	17,055
Martin H. Mitchell, Democratic	16,469
John Nitsch, Socialist.....	2,913
Maude E. Sanders, Progressive	8,051
John A. Sells, Socialist	2,750
Chester E. Smedley, Progressive	10,588
Fred Underhill, Socialist	3,202
Dodge over Holmberg.....	3,294
Eaton over Holmberg.....	3,101
Knauss over Holmberg.....	1,847
Hamilton over Holmberg.....	614

ABSTRACT OF VOTES CAST

ABSTRACT OF VOTES CAST AT A GENERAL ELECTION HELD ON
TUESDAY, NOVEMBER 3, A. D. 1914, FOR STATE SENATOR FROM
THE SECOND SENATORIAL DISTRICT.

COUNTY	H. G. DeTienne (Dem.)	Wilkins O. Peterson (Rep.)	C. B. Anthony (Soc.)
Pueblo	4,955	6,906	701
Peterson over De Tienne.....		1,951	

ABSTRACT OF VOTES CAST AT A GENERAL ELECTION HELD ON
TUESDAY, NOVEMBER 3, A. D. 1914, FOR STATE SENATOR FROM
THE THIRD SENATORIAL DISTRICT.

COUNTY	David Elliott (Rep.)	John T. Kavanaugh (Dem.)	C. A. Lemmers (Prog.)	M. J. Acton (Soc.)
El Paso	5,298	4,215	3,435	731
Elliott over Kavanaugh.....			1,083.	

ABSTRACT OF VOTES CAST AT A GENERAL ELECTION HELD ON TUESDAY, NOVEMBER 3, A. D. 1914, FOR STATE SENATOR FROM THE SIXTH SENATORIAL DISTRICT.

COUNTIES	William J. Candlish (Rep.-Prog.)	Walter L. Philbin (Dem.)
Chaffee	1,391	1,393
Lake	1,806	1,638
	3,197	3,031
Candlish's majority		166

ABSTRACT OF VOTES CAST AT A GENERAL ELECTION HELD ON TUESDAY, NOVEMBER 3, A. D. 1914, FOR STATE SENATOR FROM THE SEVENTH SENATORIAL DISTRICT.

COUNTY	B. F. Early (Dem.)	James W. Gault (Prog.)	Robert E. Winbourne (Rep.)	N. N. Westfall (Soc.)
Weld	3,969	1,478	5,502	500
Winbourne over Early				1,533

ABSTRACT OF VOTES CAST

ABSTRACT OF VOTES CAST AT A GENERAL ELECTION HELD ON
TUESDAY, NOVEMBER 3, A. D. 1914, FOR STATE SENATOR FROM
THE TENTH SENATORIAL DISTRICT.

COUNTY	Fred W. Stow (Dem.)	C. F. Wilkin (Rep.-Prog.)	J. H. Mayfield (Soc.)
Larimer	2,631	3,271	444
Wilkin over Stow.....		640	

ABSTRACT OF VOTES CAST AT A GENERAL ELECTION HELD ON
TUESDAY, NOVEMBER 3, A. D. 1914, FOR STATE SENATOR FROM
THE TWELFTH SENATORIAL DISTRICT.

COUNTIES	Clarence O. Finch (Dem.)	Henry A. Klingner (Prog.)	O. L. Mitten (Rep.)
Logan	1,304	303	1,433
Phillips	439	125	521
Sedgwick	358	168	406
Washington	691	195	853
Yuma	964	707	1,141
	<hr/>	<hr/>	<hr/>
	3,756	1,498	4,354
Mitten over Finch.....		598	

ABSTRACT OF VOTES CAST

ABSTRACT OF VOTES CAST AT A GENERAL ELECTION HELD ON TUESDAY, NOVEMBER 3, A. D. 1914, FOR STATE SENATOR FROM THE FOURTEENTH SENATORIAL DISTRICT.

COUNTIES	Charles Hayden (Rep.)	A. D. Mackenzie (Dem.-Prog.)
Costilla	729	356
Custer	315	589
Huerfano	2,348	2,132
	3,392	3,077
Hayden's majority		315

ABSTRACT OF VOTES CAST AT A GENERAL ELECTION HELD ON TUESDAY, NOVEMBER 3, A. D. 1914, FOR STATE SENATOR FROM THE FIFTEENTH SENATORIAL DISTRICT.

COUNTIES	Frank H. Means (Rep.)	Byron A. Roloson (Dem.)
Mineral	147	210
Rio Grande	1,182	881
Saguache	1,102	715
	2,431	1,806
Means' majority		625

ABSTRACT OF VOTES CAST

ABSTRACT OF VOTES CAST AT A GENERAL ELECTION HELD ON TUESDAY, NOVEMBER 3, A. D. 1914, FOR STATE SENATOR FROM THE SIXTEENTH SENATORIAL DISTRICT.

COUNTY	Erman W. Kluge (Dem.)	Avery C. Newton (Prog.)	F. Barnard Welsh (Rep.)	E. M. Cline (Soc.)
Mesa	2,522	1,543	1,375	929
Kluge over Newton.....				979

ABSTRACT OF VOTES CAST AT A GENERAL ELECTION HELD ON TUESDAY, NOVEMBER 3, A. D. 1914, FOR STATE SENATOR FROM THE SEVENTEENTH SENATORIAL DISTRICT.

COUNTIES	Fred Schermerhorn (Dem.)	S. Wonder (Rep.)
Dolores	141	65
Montrose	1,755	1,728
San Miguel	943	810
	<hr/>	<hr/>
	2,839	2,603
Schermerhorn's majority		236

ABSTRACT OF VOTES CAST

ABSTRACT OF VOTES CAST AT A GENERAL ELECTION HELD ON TUESDAY, NOVEMBER 3, A. D. 1914, FOR STATE SENATOR FROM THE EIGHTEENTH SENATORIAL DISTRICT.

COUNTIES	Herbert E. Curran (Rep.)	John H. Slattery (Dem.)
Archuleta	453	464
Hinsdale	127	115
Ouray	781	519
San Juan	436	433
	<hr/>	<hr/>
	1,797	1,531
Curran's majority		266

ABSTRACT OF VOTES CAST AT A GENERAL ELECTION HELD ON TUESDAY, NOVEMBER 3, A. D. 1914, FOR STATE SENATOR FROM THE TWENTIETH SENATORIAL DISTRICT.

COUNTIES	George Lewis (Dem.)	Melville B. Rapp (Rep.-Prog.)	W. B. Butler (Soc.)
Park	475	367	48
Teller	3,406	1,459	437
	<hr/>	<hr/>	<hr/>
	3,881	1,826	485
Lewis over Rapp			2,055

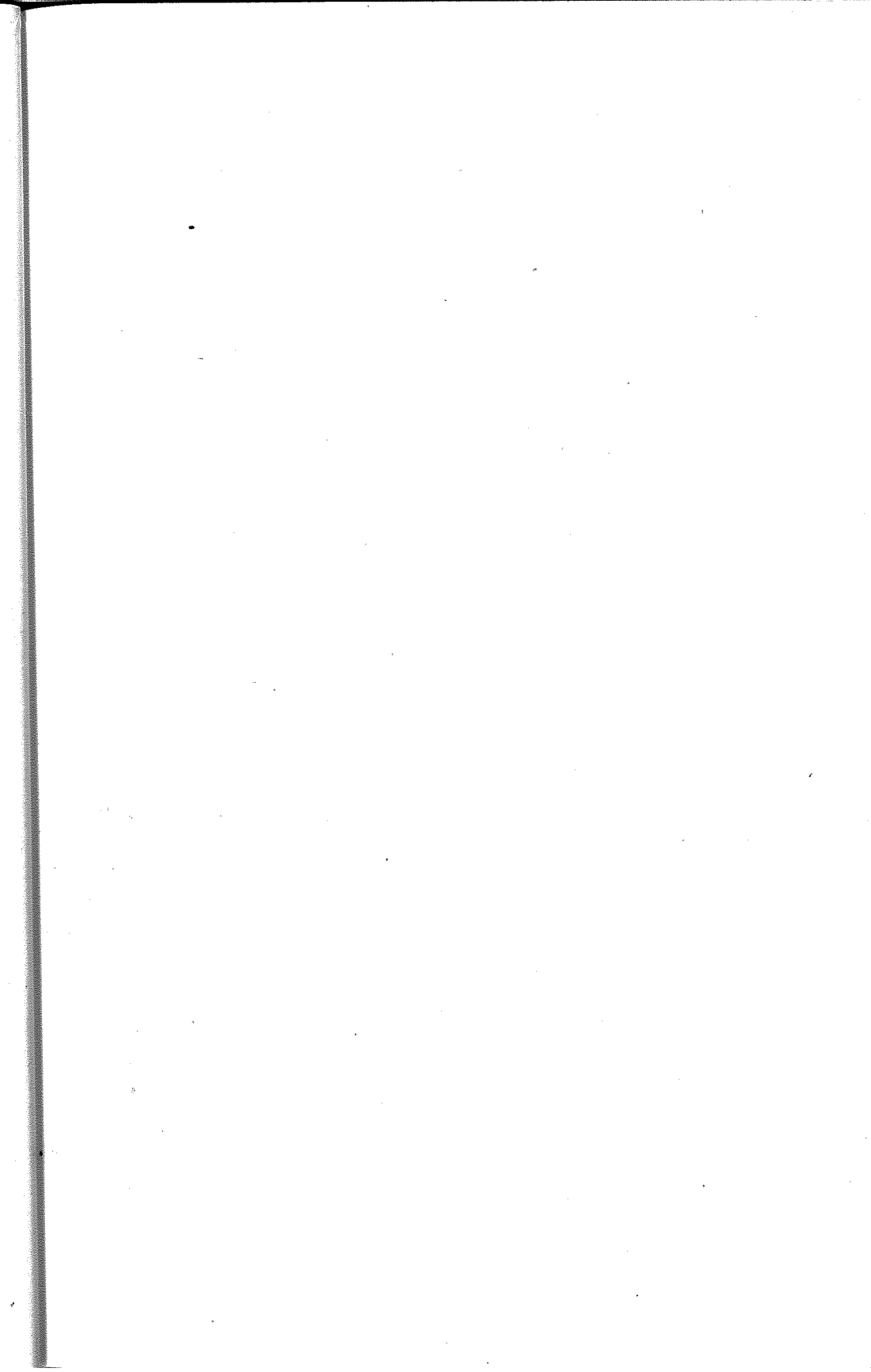
ABSTRACT OF VOTES CAST

ABSTRACT OF VOTES CAST AT A GENERAL ELECTION HELD ON
TUESDAY, NOVEMBER 3, A. D. 1914, FOR STATE SENATOR FROM
THE TWENTY-FIFTH SENATORIAL DISTRICT.

COUNTIES	John S. Hasty (Rep.)	M. M. Simpson (Dem.-Prog.)
Baca	594	510
Bent	907	826
Kiowa	573	665
Prowers	1,607	1,272
	<hr/>	<hr/>
	3,681	3,273
Hasty's majority		408

ABSTRACT OF VOTES CAST AT A GENERAL ELECTION HELD ON
TUESDAY, NOVEMBER 3, A. D. 1914, FOR STATE SENATOR FROM
THE TWENTY-SEVENTH SENATORIAL DISTRICT.

COUNTIES	W. H. Abbott (Prog.)	John F. Dickinson (Rep.)	William D. Reilly (Dem.)
Cheyenne	72	553	351
Douglas	41	556	608
Elbert	115	605	1,062
Kit Carson	437	735	615
Lincoln	123	949	929
	<hr/>	<hr/>	<hr/>
	788	3,398	3,565
Reilly over Dickinson			167



ABSTRACT OF VOTES CAST AT A GENERAL ELECTION HELD ON
TUESDAY, NOVEMBER 3, A. D. 1914, FOR REPRESENTATIVE IN
THE TWENTIETH GENERAL ASSEMBLY FROM THE CITY AND
COUNTY OF DENVER.

Joseph S. Baker, Progressive.....	14,191
Edward B. Bartholic, Socialist.....	3,359
George M. Bergen, No Ass'by.....	1,193
Morris Berkowitz, Socialist.....	3,143
Carroll M. Bills, Republican.....	25,320
Herman A. Bolster, No Ass'by.....	1,127
Rudolph Borchardt, Tax Payer.....	4,201
William T. Boyd, Progressive.....	7,350
Joseph B. Cobbs, No. Ass'by.....	1,447
Albert Gallatin Craig, Democrat.....	18,038
John F. Critchfield, Socialist.....	3,247
John Dietrich, Democrat.....	21,076
George B. Drake, Republican.....	25,388
Edward V. Dunklee, Democrat.....	23,142
James G. Edgeworth, Socialist.....	3,341
William F. Evans, Progressive.....	8,121
William Engelbert Frye, Progressive.....	7,468
Walter R. Garretson, Republican.....	17,998
James O. Garrett, Democrat.....	17,437
Harold G. Garwood, Republican.....	20,014
McLeod M. George, Progressive.....	6,405
John S. Gable, No Ass'by.....	1,223
Alby N. Gordon, Socialist.....	3,188
Randolph M. Hagerman, Republican.....	22,964
Robert Harris, Republican.....	22,216
Evangeline Heartz, Democrat.....	20,119
Axel E. Helme, No Ass'by.....	1,005
William W. Howland, Republican.....	21,264
Thomas M. Hyder, Democrat.....	15,239
John T. Joyce, Socialist.....	3,203
Jennie B. Kern, Socialist.....	2,841
Margaret W. Kessler, Progressive.....	6,719
Albert Kiefer, Socialist.....	3,146
Fred Lambert, No Ass'by.....	2,003
James Thomas Macey, Republican.....	16,992
Adrian Maguire, No Ass'by.....	2,272
Louise A. Maloney, Democrat.....	14,935

ABSTRACT OF VOTES CAST AT A GENERAL ELECTION HELD ON
TUESDAY, NOVEMBER 3, A. D. 1914, FOR REPRESENTATIVE IN
THE TWENTIETH GENERAL ASSEMBLY FROM THE CITY AND
COUNTY OF DENVER.—Continued.

Thomas F. McGovern, Democrat.....	16,656
William J. McPherson, Progressive.....	7,691
Rufus P. Means, Democrat.....	14,377
Schuyler C. Peck, Progressive.....	7,650
Burnett S. Pepper, Progressive.....	6,786
Leonard Ruehle, No Ass'by.....	1,668
Stephen W. Ryan, Democrat.....	16,279
John A. Rymer, Progressive.....	6,891
Edward M. Sabin, Republican.....	18,994
Benjamin J. Salmon, Democrat.....	17,547
Charles H. Schreiber, Progressive.....	12,706
William P. Simmington, Progressive.....	10,616
Jennie E. Smith, Socialist.....	3,310
Frank Springrose, No Ass'by.....	700
Edward W. Stuart, No Ass'by.....	991
Fred J. Taylor, No Ass'by.....	2,332
Frank D. Thompson, Republican.....	23,220
Thomas Tonge, Republican.....	19,614
Charles W. Varnum, Republican.....	17,082
Jesse Vetter, Socialist.....	3,602
John Redmond Williams, Democrat.....	17,866
Anton F. Willmer, Socialist.....	2,894
William Young, Socialist.....	3,275
Drake over Craig.....	7,350
Dunklee over Craig.....	5,104
Howland over Craig.....	3,226
Garwood over Craig.....	1,976
Bills over Craig.....	7,282
Hagerman over Craig.....	4,926
Dietrich over Craig.....	3,038
Tonge over Craig.....	1,576
Thompson over Craig.....	5,182
Harris over Craig.....	4,170
Heartz over Craig.....	2,081
Sabin over Craig.....	956

ABSTRACT OF VOTES CAST

ABSTRACT OF VOTES CAST AT A GENERAL ELECTION HELD ON TUESDAY, NOVEMBER 3, A. D. 1914, FOR REPRESENTATIVES IN THE TWENTIETH GENERAL ASSEMBLY, FROM THE COUNTY OF ADAMS.

COUNTY	James N. Counter (Dem.)	Samuel H. Morrow (Rep.-Prog.)
Adams	1,446	1,001
Counter's majority	445	

ABSTRACT OF VOTES CAST AT A GENERAL ELECTION HELD ON TUESDAY, NOVEMBER 3, A. D. 1914, FOR REPRESENTATIVES IN THE TWENTIETH GENERAL ASSEMBLY, FROM THE COUNTY OF ALAMOSA.

COUNTY	Robert M. Born (Dem.)	Perry Craig (Rep.-Prog.)
Alamosa	838	715
Born's majority	123	

ABSTRACT OF VOTES CAST AT A GENERAL ELECTION HELD ON TUESDAY, NOVEMBER 3, A. D. 1914, FOR REPRESENTATIVE IN THE TWENTIETH GENERAL ASSEMBLY FROM THE COUNTIES OF ARAPAHOE AND ELBERT.

COUNTIES	Frank Ford (Prog.)	Fred F. Hee (Dem.)	J. J. Kruse (Rep.)
Arapahoe	1,035	1,199	1,053
Elbert	156	535	1,084
	1,191	1,734	2,137

Kruse over Hee..... 403

ABSTRACT OF VOTES CAST AT A GENERAL ELECTION HELD ON TUESDAY, NOVEMBER 3, A. D. 1914, FOR REPRESENTATIVES IN THE TWENTIETH GENERAL ASSEMBLY, FROM THE COUNTY OF BOULDER. (TWO TO ELECT).

A. P. Ardourel, Democrat.....	4,435
L. E. Girard, Republican.....	3,750
Joseph Hurd, Democrat.....	2,994
R. L. Montgomery, Republican.....	4,023
Henry Stewart, Socialist.....	605
John C. Thompson, Socialist.....	635
Ardourel over Girard.....	685
Montgomery over Girard.....	273

ABSTRACT OF VOTES CAST

ABSTRACT OF VOTES CAST AT A GENERAL ELECTION HELD ON TUESDAY, NOVEMBER 3, A. D. 1914, FOR REPRESENTATIVE IN THE TWENTIETH GENERAL ASSEMBLY, FROM THE COUNTY OF CHAFFEE.

COUNTY	A. E. Wright, Jr. (Dem.)	Homer J. Brown (Soc.)	Edwin A. Van Camp (Citizen)
Chaffee	1,488	397	797
Wright over Van Camp.....			691

ABSTRACT OF VOTES CAST AT A GENERAL ELECTION HELD ON TUESDAY, NOVEMBER 3, A. D. 1914, FOR REPRESENTATIVE IN THE TWENTIETH GENERAL ASSEMBLY, FROM THE COUNTY OF CLEAR CREEK.

COUNTY	Frank Brady (Dem.)	Herman E. Crist (Rep.)
Clear Creek.....	743	991
Crist's majority		248

ABSTRACT OF VOTES CAST

ABSTRACT OF VOTES CAST AT A GENERAL ELECTION HELD ON TUESDAY, NOVEMBER 3, A. D. 1914, FOR REPRESENTATIVE IN THE TWENTIETH GENERAL ASSEMBLY, FROM THE COUNTY OF CONEJOS.

COUNTY	Celestino Garcia (Rep.)	Ricardo Gonzales (Dem.)
Conejos	1,404	989
Garcia's majority		415

ABSTRACT OF VOTES CAST AT A GENERAL ELECTION HELD ON TUESDAY, NOVEMBER 3, A. D. 1914, FOR REPRESENTATIVES IN THE TWENTIETH GENERAL ASSEMBLY FROM THE COUNTIES OF CROWLEY AND OTERO. (TWO TO ELECT).

COUNTIES	Reuben C. Inge (Rep.-Prog.)	Stephen F. Ilgenfritz (Dem.)	Orlando W. West (Dem.)	Chas. C. Wooldridge (Rep.-Prog.)
Crowley	615	598	507	831
Otero	2,829	1,850	2,694	2,327
	<hr/>	<hr/>	<hr/>	<hr/>
	3,444	2,448	3,201	3,158
Inge over Wooldridge.....				286
West over Wooldridge.....				43

ABSTRACT OF VOTES CAST

ABSTRACT OF VOTES CAST AT A GENERAL ELECTION HELD ON TUESDAY, NOVEMBER 3, A. D. 1914, FOR REPRESENTATIVE IN THE TWENTIETH GENERAL ASSEMBLY, FROM THE COUNTY OF DELTA.

COUNTY	Geo. W. Bruce (Dem.)	C. C. Hawkins (Prog.)	Jacob Keiser (Rep.)	F. J. Pearson (Soc.)
Delta	1,848	1,084	836	494
Bruce over Hawkins.....				764

ABSTRACT OF VOTES CAST AT A GENERAL ELECTION HELD ON TUESDAY, NOVEMBER 3, A. D. 1914, FOR REPRESENTATIVE IN THE TWENTIETH GENERAL ASSEMBLY, FROM THE COUNTY OF DOUGLAS.

COUNTY	Charles Shipman (Dem.)	Hugh Taylor (Rep.)
Douglas	577	680
Taylor's majority		103

ABSTRACT OF VOTES CAST AT A GENERAL ELECTION HELD ON TUESDAY, NOVEMBER 3, A. D. 1914, FOR REPRESENTATIVE IN THE TWENTIETH GENERAL ASSEMBLY, FROM THE COUNTY OF EAGLE.

COUNTY	James Dilts (Rep.)	Erlo E. Kennedy (Dem.)	R. W. Livers (Prog.)
Eagle	617	721	137
Kennedy over Dilts.....			104

ABSTRACT OF VOTES CAST AT A GENERAL ELECTION HELD ON TUESDAY, NOVEMBER 3, A. D. 1914, FOR REPRESENTATIVES IN THE TWENTIETH GENERAL ASSEMBLY, FROM THE COUNTY OF EL PASO. (THREE TO ELECT).

Jack Grant, Democrat.....	3,682
George B. Gould, Progressive.....	3,553
Lillian H. Kerr, Progressive.....	2,982
J. N. Pribble, Democrat.....	3,095
L. A. Puffer, Republican.....	5,686
M. M. Sinton, Democrat.....	4,575
P. B. Stewart, Republican.....	4,858
Geo. M. Taylor, Republican.....	4,766
Thomas E. Thomas, Progressive.....	3,691
F. D. Hahnenkratt, Socialist.....	721
Charles Edward Thomas Manning, Socialist.....	622
Frank D. Warren, Socialist.....	750
Puffer over Sinton.....	1,111
Stewart over Sinton.....	283
Taylor over Sinton.....	191

ABSTRACT OF VOTES CAST AT A GENERAL ELECTION HELD ON TUESDAY, NOVEMBER 3, A. D. 1914, FOR REPRESENTATIVE IN THE TWENTIETH GENERAL ASSEMBLY, FROM THE COUNTY OF FREMONT.

COUNTY	Allen Bell (Dem.)	Geo. E. Colgate (Rep.)	J. Homer Dickson (Prog.)	Genevieve Gould Battey (Soc.)
Fremont	2,214	2,454	430	358
Colgate over Bell.....			240	

ABSTRACT OF VOTES CAST

ABSTRACT OF VOTES CAST AT A GENERAL ELECTION HELD ON TUESDAY, NOVEMBER 3, A. D. 1914, FOR REPRESENTATIVE IN THE TWENTIETH GENERAL ASSEMBLY FROM THE COUNTIES OF GARFIELD AND RIO BLANCO.

COUNTIES	Willis S. Montgomery (Dem.)	John L. Noonan (Rep.)
Garfield	1,239	1,990
Rio Blanco	581	388
	<hr/>	<hr/>
	1,820	2,378
Noonan's majority.....		558

ABSTRACT OF VOTES CAST AT A GENERAL ELECTION HELD ON TUESDAY, NOVEMBER 3, A. D. 1914, FOR REPRESENTATIVE IN THE TWENTIETH GENERAL ASSEMBLY, FROM THE COUNTY OF GILPIN.

COUNTY	Henry C. Bolsinger (Dem.)	William L. Kirk (Prog.)	William C. Mathews (Rep.)
Gilpin	532	256	414
Bolsinger over Mathews.....			118

ABSTRACT OF VOTES CAST AT A GENERAL ELECTION HELD ON TUESDAY, NOVEMBER 3, A. D. 1914, FOR REPRESENTATIVE IN THE TWENTIETH GENERAL ASSEMBLY, FROM THE COUNTY OF GUNNISON.

COUNTY	W. Scott Humason (Rep.)	James A. McElroy (Dem.)	Lewis H. Easterly (Soc.)
Gunnison	1,117	741	449
Humason over McElroy.....			376

ABSTRACT OF VOTES CAST

ABSTRACT OF VOTES CAST AT A GENERAL ELECTION HELD ON TUESDAY, NOVEMBER 3, A. D. 1914, FOR REPRESENTATIVE IN THE TWENTIETH GENERAL ASSEMBLY FROM THE COUNTIES OF ARCHULETA, HINSDALE AND MINERAL.

COUNTIES	A. M. Collins (Rep.)	James J. O'Rourke (Dem.)	Owen McDermat (Soc.)
Archuleta	334	645	.. .
Hinsdale	128	122	.. .
Mineral	339	109	5
	<hr/>	<hr/>	<hr/>
	801	876	5
O'Rourke over Collins.....			75

ABSTRACT OF VOTES CAST AT A GENERAL ELECTION HELD ON TUESDAY, NOVEMBER 3, A. D. 1914, FOR REPRESENTATIVE IN THE TWENTIETH GENERAL ASSEMBLY FROM THE COUNTIES OF HUERFANO AND COSTILLA.

COUNTIES	J. P. Campbell (Dem.-Prog.)	J. P. Gallegos (Rep.)
Huerfano	2,106	2,479
Costilla	517	680
	<hr/>	<hr/>
	2,623	3,159
Gallegos' majority.....		536

ABSTRACT OF VOTES CAST

ABSTRACT OF VOTES CAST AT A GENERAL ELECTION HELD ON TUESDAY, NOVEMBER 3, A. D. 1914, FOR REPRESENTATIVE IN THE TWENTIETH GENERAL ASSEMBLY, FROM THE COUNTY OF JEFFERSON.

COUNTY	John Grattan (Prog.)	Wesley Staley (Dem.)	Charles C. Welch (Rep.)	D. B. Kirkman (Soc.)
Jefferson	562	2,283	1,956	257
Haley over Welch.....			327	

ABSTRACT OF VOTES CAST AT A GENERAL ELECTION HELD ON TUESDAY, NOVEMBER 3, A. D. 1914, FOR REPRESENTATIVE IN THE TWENTIETH GENERAL ASSEMBLY FROM THE COUNTIES OF KIOWA AND BENT.

COUNTIES	Eoon Best (Dem.)	W. A. Hasty (Rep.-Prog.)
Kiowa	889	506
Bent	809	939
	1,698	1,445
Best's majority	253	

ABSTRACT OF VOTES CAST AT A GENERAL ELECTION HELD ON TUESDAY, NOVEMBER 3, A. D. 1914, FOR REPRESENTATIVE IN THE TWENTIETH GENERAL ASSEMBLY, FROM THE COUNTY OF LAKE.

COUNTY	Winters Morrell (Rep.-Prog.)	Fred J. McNair (Dem.)	E. W. McClintock (Soc.)
Lake	1,415	1,873	323
McNair over Morrell.....		458	

ABSTRACT OF VOTES CAST

ABSTRACT OF VOTES CAST AT A GENERAL ELECTION HELD ON TUESDAY, NOVEMBER 3, A. D. 1914, FOR REPRESENTATIVE IN THE TWENTIETH GENERAL ASSEMBLY, FROM THE COUNTY OF LA PLATA.

COUNTY	Wm. C. Jemmlson (Dem.)	Jno. H. McDevitt, Jr. (Rep.)
La Plata	1,259	1,973
McDevitt, Jr.'s majority.....		714

ABSTRACT OF VOTES CAST AT A GENERAL ELECTION HELD ON TUESDAY, NOVEMBER 3, A. D. 1914, FOR REPRESENTATIVE IN THE TWENTIETH GENERAL ASSEMBLY, FROM THE COUNTY OF LARIMER.

COUNTY	P. D. Nelson (Rep.-Prog.)	Abram C. Van Galder (Dem.)	Clyde Karnes (Soc.)
Larimer	3,287	2,411	452
Nelson over Van Galder.....			876

ABSTRACT OF VOTES CAST AT A GENERAL ELECTION HELD ON TUESDAY, NOVEMBER 3, A. D. 1914, FOR REPRESENTATIVES IN THE TWENTIETH GENERAL ASSEMBLY, FROM THE COUNTY OF LAS ANIMAS. (TWO TO ELECT).

COUNTY	John Mayer (Rep.)	F. E. Nelson (Dem.)	J. B. Proctor (Prog.)	H. A. Schmidt (Rep.)	Meliton R. Vasquez (Dem.)	Callie Harper (Soc.)	F. B. McGregor (Soc.)
Las Animas...	4,228	3,793	366	3,905	3,522	323	297
Mayer over Nelson						435	
Schmidt over Nelson						112	

ABSTRACT OF VOTES CAST

ABSTRACT OF VOTES CAST AT A GENERAL ELECTION HELD ON TUESDAY, NOVEMBER 3, A. D. 1914, FOR REPRESENTATIVE IN THE TWENTIETH GENERAL ASSEMBLY FROM THE COUNTIES OF LINCOLN, KIT CARSON AND CHEYENNE.

COUNTIES	John M. Newell (Dem.)	Clarence M. Smith (Prog.)	F. H. Spencer (Rep.)
Lincoln	928	195	823
Kit Carson	653	512	597
Cheyenne	241	144	663
	<hr/>	<hr/>	<hr/>
	1,822	851	2,083
Spencer over Newell.....			261

ABSTRACT OF VOTES CAST AT A GENERAL ELECTION HELD ON TUESDAY, NOVEMBER 3, A. D. 1914, FOR REPRESENTATIVE IN THE TWENTIETH GENERAL ASSEMBLY FROM THE COUNTIES OF LOGAN AND SEDGWICK.

COUNTIES	G. Fosdick (Dem.)	John C. Scott (Rep.-Prog.)
Logan	1,252	1,891
Sedgwick	325	554
	<hr/>	<hr/>
	1,577	2,445
Scott's majority		868

ABSTRACT OF VOTES CAST

ABSTRACT OF VOTES CAST AT A GENERAL ELECTION HELD ON TUESDAY, NOVEMBER 3, A. D. 1914, FOR REPRESENTATIVE IN THE TWENTIETH GENERAL ASSEMBLY, FROM THE COUNTY OF MESA.

COUNTY	Laura S. Johnson (Prog.)	J. M. Kinard (Rep.)	William M. Porter (Dem.)	S. B. Hutchinson (Soc.)
Mesa	1,044	1,503	2,441	1,077
Porter over Kinard.....				938

ABSTRACT OF VOTES CAST AT A GENERAL ELECTION HELD ON TUESDAY, NOVEMBER 3, A. D. 1914, FOR REPRESENTATIVE IN THE TWENTIETH GENERAL ASSEMBLY FROM THE COUNTIES OF MONTEZUMA AND DOLORES.

COUNTIES	S. C. Green (Rep.)	William I. Myler (Dem.)
Montezuma	923	795
Dolores	76	170
	999	965
Green's majority		34

ABSTRACT OF VOTES CAST AT A GENERAL ELECTION HELD ON TUESDAY, NOVEMBER 3, A. D. 1914, FOR REPRESENTATIVE IN THE TWENTIETH GENERAL ASSEMBLY, FROM THE COUNTY OF MONTROSE.

COUNTY	C. E. Adams (Rep.)	W. J. Horton (Dem.)	Wm. K. Taptan (Soc.)
Montrose	1,534	1,885	424
Horton over Adams.....			351

ABSTRACT OF VOTES CAST

ABSTRACT OF VOTES CAST AT A GENERAL ELECTION HELD ON TUESDAY, NOVEMBER 3, A. D. 1914, FOR REPRESENTATIVE IN THE TWENTIETH GENERAL ASSEMBLY FROM THE COUNTIES OF MORGAN AND WASHINGTON.

COUNTIES	Ralph F. Drennan (Prog.)	Adolph Brockman (Dem.)	Mark B. Gill (Rep.)	Henry W. Sweetland (Soc.)
Morgan	691	755	1,302	217
Washington	264	677	813	102
	<hr/>	<hr/>	<hr/>	<hr/>
	955	1,432	2,115	319
Gill over Brockman.....				683

ABSTRACT OF VOTES CAST AT A GENERAL ELECTION HELD ON TUESDAY, NOVEMBER 3, A. D. 1914, FOR REPRESENTATIVE IN THE TWENTIETH GENERAL ASSEMBLY, FROM THE COUNTY OF OURAY.

COUNTY	B. H. DuPraw (Dem.)	Robt. K. Humphrey (Rep.)
Ouray	842	579
DuPraw's majority	263	

ABSTRACT OF VOTES CAST

ABSTRACT OF VOTES CAST AT A GENERAL ELECTION HELD ON TUESDAY, NOVEMBER 3, A. D. 1914, FOR REPRESENTATIVE IN THE TWENTIETH GENERAL ASSEMBLY FROM THE COUNTIES OF PHILLIPS AND YUMA.

COUNTIES	Joseph B. Campbell (Dem.)	Chas. E. Damewood (Rep.-Prog.)
Phillips	469	595
Yuma	1,207	1,374
Totals.....	1,676	1,969
Damewood's majority		293

ABSTRACT OF VOTES CAST AT A GENERAL ELECTION HELD ON TUESDAY, NOVEMBER 3, A. D. 1914, FOR REPRESENTATIVE IN THE TWENTIETH GENERAL ASSEMBLY, FROM THE COUNTY OF PITKIN.

COUNTY	Thomas Anson (Prog.)	Charles Dalley (Dem.)	J. W. Deane (Rep.)	J. Edw. Turner (Soc.)
Pitkin	240	503	319	172
Dalley over Deane.....				184

ABSTRACT OF VOTES CAST

ABSTRACT OF VOTES CAST AT A GENERAL ELECTION HELD ON TUESDAY, NOVEMBER 3, A. D. 1914, FOR REPRESENTATIVE IN THE TWENTIETH GENERAL ASSEMBLY FROM THE COUNTIES OF PROWERS AND BACA.

COUNTIES	Evan R. Jones (Dem.-Prog.)	Ray McGrath (Rep.)
Baca	512	581
Prowers	1,121	1,623
Totals.....	1,633	2,204
McGrath's majority	571	

ABSTRACT OF VOTES CAST AT A GENERAL ELECTION HELD ON TUESDAY, NOVEMBER 3, A. D. 1914, FOR REPRESENTATIVES IN THE TWENTIETH GENERAL ASSEMBLY, FROM THE COUNTY OF PUEBLO. (FOUR TO ELECT).

A. S. Andrew, Republican.....	7,862
D. C. Cook, Socialist.....	1,034
P. C. Dunlap, Democratic.....	6,303
Hallet C. Gallup, Democratic.....	6,192
F. L. Higgins, Democratic.....	5,924
David W. Jones, Republican.....	6,237
C. M. Kohnman, Socialist.....	1,328
J. J. Laurenry, Progressive.....	268
D. P. McGrew, Socialist.....	818
J. M. Sare, Democratic.....	6,116
F. M. Stokes, Republican.....	6,706
F. E. Wallace, Republican.....	7,308
Mrs. Love Westfall, Socialist	954
J. U. Wilkins, Democratic	370
Andrew over Jones.....	1,625
Wallace over Jones.....	1,071
Stokes over Jones.....	469
Dunlap over Jones.....	66

ABSTRACT OF VOTES CAST AT A GENERAL ELECTION HELD ON TUESDAY, NOVEMBER 3, A. D. 1914, FOR REPRESENTATIVE IN THE TWENTIETH GENERAL ASSEMBLY, FROM THE COUNTY OF RIO GRANDE.

COUNTY	Thomas W. Carr (Dem.-Ind.)	August J. Weiss (Rep.-Law.)
Rio Grande	833	1,227
Weiss' majority	394	

ABSTRACT OF VOTES CAST AT A GENERAL ELECTION HELD ON TUESDAY, NOVEMBER 3, A. D. 1914, FOR REPRESENTATIVE IN THE TWENTIETH GENERAL ASSEMBLY FROM THE COUNTIES OF ROUTT AND MOFFAT.

COUNTIES	Horace C. Dodge (Rep.)	Robert E. Norvell (Dem.)
Moffat	356	446
Routt	879	1,407
Totals.....	1,235	1,853
Norvell's majority	618	

ABSTRACT OF VOTES CAST

ABSTRACT OF VOTES CAST AT A GENERAL ELECTION HELD ON TUESDAY, NOVEMBER 3, A. D. 1914, FOR REPRESENTATIVE IN THE TWENTIETH GENERAL ASSEMBLY FROM THE COUNTIES OF SAGUACHE AND CUSTER.

COUNTIES	W. Scott Carroll (Rep.)	Carl L. Marold (Dem.)
Custer	371	475
Saguache	879	860
Totals.....	1,250	1,335
Marold's majority	85	

ABSTRACT OF VOTES CAST AT A GENERAL ELECTION HELD ON TUESDAY, NOVEMBER 3, A. D. 1914, FOR REPRESENTATIVE IN THE TWENTIETH GENERAL ASSEMBLY, FROM THE COUNTY OF SAN JUAN.

COUNTIES	John S. Fox (Dem.)	Henry Langhurst (Soc.)	J. A. McCrimmon (Rep.-Prog.)
San Juan	494	94	326
Fox over McCrimmon.....		168	

ABSTRACT OF VOTES CAST

ABSTRACT OF VOTES CAST AT A GENERAL ELECTION HELD ON TUESDAY, NOVEMBER 3, A. D. 1914, FOR REPRESENTATIVE IN THE TWENTIETH GENERAL ASSEMBLY, FROM THE COUNTY OF SAN MIGUEL.

COUNTIES	W. H. Doyle (Dem.)	W. R. Vanderveer (Rep.)	Albert T. Woods (Ind.)
San Miguel	896	705	327
Doyle over Vanderveer.....		191	

ABSTRACT OF VOTES CAST AT A GENERAL ELECTION HELD ON TUESDAY, NOVEMBER 3, A. D. 1914, FOR REPRESENTATIVE IN THE TWENTIETH GENERAL ASSEMBLY FROM THE COUNTIES OF SUMMIT, GRAND AND JACKSON.

COUNTIES	Stewart P. Fincher (Dem.)	O. K. Gaymon (Rep.)
Grand	467	411
Jackson	212	183
Summit	482	416
Totals.....	1,161	1,010
Fincher's majority	151	

ABSTRACT OF VOTES CAST

ABSTRACT OF VOTES CAST AT A GENERAL ELECTION HELD ON TUESDAY, NOVEMBER 3, A. D. 1914, FOR REPRESENTATIVES IN THE TWENTIETH GENERAL ASSEMBLY FROM THE COUNTIES OF TELLER AND PARK. (TWO TO ELECT).

COUNTIES	W. L. Baker (Soc.)	W. A. Harrison (Rep.-Prog.)	Clinton E. Roberts (Dem.)	John H. White (Rep.-Prog.)	Emery R. Young (Dem.)
Park	45	344	367	312	356
Teller	530	1,673	2,403	2,270	2,047
Totals.....	575	2,017	2,770	2,582	2,403
Roberts over Young.....				367	
White over Young.....				179	

ABSTRACT OF VOTES CAST AT A GENERAL ELECTION HELD ON TUESDAY, NOVEMBER 3, A. D. 1914, FOR REPRESENTATIVES IN THE TWENTIETH GENERAL ASSEMBLY, FROM THE COUNTY OF WELD. (TWO TO ELECT).

Leonard Burch, Progressive	1,244
William K. Gilchrist, Republican	4,563
C. R. Graves, Republican	4,156
John A. Hicks, Democratic-Prohibition	4,059
F. H. Hubert, Socialist.....	497
J. R. McCall, Socialist	519
G. W. McMurray, Progressive-Prohibition	1,475
Charles T. Philp, Democratic	3,503
Gilcrest over Hicks.....	504
Graves over Hicks.....	97

ABSTRACT OF VOTES CAST AT A GENERAL ELECTION HELD ON
TUESDAY, NOVEMBER 3, A. D. 1914, FOR UNITED STATES SENATOR.

COUNTIES	Benj. Griffith (Prog)	J. C. Griffiths (Soc.)	George J. Kindel (K. C. E.)	Charles S. Thomas (Dem.)	Hubert Work (Rep.)
Adams	284	135	219	1,184	702
Alamosa	107	161	38	627	579
Arapahoe	642	220	298	1,154	1,125
Archuleta	32	39	15	409	432
Baca	67	103	5	441	456
Bent	150	43	22	711	746
Boulder	655	583	236	4,024	4,315
Chaffee	173	262	105	1,259	986
Cheyenne	88	95	17	346	438
Clear Creek.....	58	52	92	766	640
Conejos	34	26	47	590	1,163
Costilla	31	38	13	293	688
Crowley	81	51	22	570	719
Custer	31	28	18	413	364
Delta	817	459	155	1,560	1,322
Denver	9,983	2,683	6,249	25,953	20,500
Dolores	28	37	10	131	31
Douglas	44	34	28	483	607
Eagle	142	60	61	608	518
Elbert	115	101	56	691	789
El Paso	3,149	704	198	5,086	5,216
Fremont	525	346	124	2,265	2,440
Garfield	304	291	135	1,479	1,188
Gilpin	43	45	57	569	403
Grand	31	29	61	357	393
Gunnison	119	298	66	918	820
Hinsdale	6	22	1	117	107
Huerfano	87	26	19	2,040	2,479
Jackson	6	6	37	148	205
Jefferson	363	247	405	2,104	2,064

ABSTRACT OF VOTES CAST AT A GENERAL ELECTION HELD ON
TUESDAY, NOVEMBER 3, A. D. 1914, FOR UNITED STATES SENATOR.
Continued.

COUNTIES	Ben. Griffith (Prog.)	J. C. Griffiths (Soc.)	George J. Kindel (K. C. E.)	Charles S. Thomas (Dem.)	Hubert Work (Rep.)
Kiowa	93	70	4	583	517
Kit Carson	234	183	21	675	706
Lake	378	288	158	1,800	1,281
La Plata	159	241	88	1,622	1,036
Larimer	543	401	154	2,597	2,901
Las Animas	387	268	129	4,011	4,315
Lincoln	108	91	28	813	957
Logan	241	183	43	1,238	1,490
Mesa	2,015	879	156	2,228	1,106
Mineral	9	43	8	194	164
Moffat	53	40	25	335	360
Montezuma	77	97	33	930	419
Montrose	491	394	90	1,466	1,373
Morgan	344	133	91	777	1,698
Otero	233	239	49	2,627	2,797
Ouray	99	120	28	576	545
Park	38	46	52	432	366
Phillips	128	61	18	379	515
Pitkin	72	151	62	633	241
Prowers	310	163	54	1,025	1,322
Pueblo	412	741	162	5,943	8,437
Rio Blanco	50	27	18	430	413
Rio Grande	66	54	30	865	985
Routt	129	160	116	1,092	841
Saguache	68	83	23	757	700
San Juan	49	95	27	438	244
San Miguel	19	119	63	930	646
Sedgwick	173	39	24	252	458
Summit	60	42	122	441	205

ABSTRACT OF VOTES CAST

103

COUNTY	Benj. Griffith (Prog.)	J. C. Griffiths (Soc.)	George J. Kindel (K. C. E.)	Charles S. Thomas (Dem.)	Hubert Work (Rep.)
Teller	414	395	182	2,685	1,600
Washington	151	113	42	663	866
Weld	1,091	480	474	4,235	5,543
Yuma	183	280	50	1,069	1,246
	<hr/>	<hr/>	<hr/>	<hr/>	<hr/>
	27,072	13,943	11,433	102,037	98,728

ABSTRACT OF VOTES CAST AT A GENERAL ELECTION HELD ON
TUESDAY, NOVEMBER 3, A. D. 1914, FOR REPRESENTATIVE IN
THE SIXTY-FOURTH CONGRESS FOR FIRST CONGRESSIONAL
DISTRICT.

COUNTY	Ben. Blumenberg (Soc.)	Benj. C. Hilliard (Dem.)	Archibald A. Lee (Prog.)	Horace Phelps (Rep.)	A. W. Rucker (Wh. Ind.)
Denver	2,612	26,169	8,729	21,569	5,445

ABSTRACT OF VOTES CAST

ABSTRACT OF VOTES CAST AT A GENERAL ELECTION HELD ON
TUESDAY, NOVEMBER 3, A. D. 1914, FOR REPRESENTATIVE IN
THE SIXTY-FOURTH CONGRESS FOR SECOND CONGRESSIONAL
DISTRICT.

COUNTIES	Charles E. Fisher (Prog.)	Harry H. Seldomridge (Dem.)	Charles B. Timberlake (Rep.)
Adams	318	1,277	765
Arapahoe	534	1,354	1,370
Boulder	863	4,315	4,055
Cheyenne	72	442	482
Douglas	54	492	635
Elbert	116	741	844
El Paso	2,623	6,326	5,077
Kit Carson	273	750	746
Larimer	756	2,660	3,029
Lincoln	107	904	938
Logan	314	1,048	1,877
Morgan	409	920	1,645
Phillips	170	424	541
Sedgwick	176	293	498
Washington	189	672	987
Weld	1,037	4,517	5,908
Yuma	245	1,154	1,352
	<hr/>	<hr/>	<hr/>
	8,256	28,289	30,749

ABSTRACT OF VOTES CAST

105

ABSTRACT OF VOTES CAST AT A GENERAL ELECTION HELD ON TUESDAY, NOVEMBER 3, A. D. 1914, FOR REPRESENTATIVE IN THE SIXTY-FOURTH CONGRESS FOR THIRD CONGRESSIONAL DISTRICT.

COUNTIES	Edward Keating (Dem.)	Neil N. McLean (Rep.-Prog.)
Alamosa	857	623
Baca	598	531
Bent	862	799
Clear Creek	901	645
Conejos	822	968
Costilla	402	688
Crowley	672	718
Custer	495	338
Fremont	3,011	2,468
Gilpin	620	403
Huerfano	2,256	2,276
Jefferson	2,840	1,966
Kiowa	742	493
Las Animas	4,732	3,849
Mineral	244	136
Otero	2,794	2,956
Park	562	335
Prowers	1,354	1,346
Pueblo	7,234	7,613
Rio Grande	1,073	908
Saguache	946	641
Teller	3,174	1,867
	<hr/>	<hr/>
	37,191	32,567

ABSTRACT OF VOTES CAST

ABSTRACT OF VOTES CAST AT A GENERAL ELECTION HELD ON
TUESDAY, NOVEMBER 3, A. D. 1914, FOR REPRESENTATIVE IN
THE SIXTY-FOURTH CONGRESS FOR FOURTH CONGRESSIONAL
DISTRICT.

COUNTIES	H. J. Baird (Rep.-Prog.)	George Kunkle (Soc.)	Edward T. Taylor (Dem.)
Archuleta	372	46	556
Chaffee	901	295	1,571
Delta	1,689	483	2,137
Dolores	47	35	157
Eagle	431	79	907
Garfield	963	246	2,294
Grand	337	37	463
Gunnison	760	311	1,148
Hinsdale	103	20	146
Jackson	145	6	243
Lake	1,430	327	2,165
La Plata	910	253	1,949
Mesa	1,882	955	3,478
Moffat	285	34	499
Montezuma	444	91	1,052
Montrose	366	394	2,103
Ouray	504	134	715
Pitkin	234	163	805
Rio Blanco	284	25	665
Routt	827	160	1,301
San Juan	259	89	492
San Miguel	608	118	1,150
Summit	234	52	566
	<hr/>	<hr/>	<hr/>
	15,015	4,353	26,562

ABSTRACT OF VOTES CAST AT A GENERAL ELECTION HELD ON
TUESDAY, NOVEMBER 3, A. D. 1914, FOR JUDGE OF SUPREME
COURT.

COUNTIES	John Campbell (Rep.)	Joseph C. Ewing (Prog.)	J. Munroe Stewart (Soc.)	James H. Teller (Dem.)
Adams	796	198	142	1,325
Alamosa	629	80	158	627
Arapahoe	1,130	347	218	1,709
Archuleta	416	44	38	449
Baca	508	56	112	455
Bent	804	132	44	667
Boulder	4,543	446	606	3,931
Chaffee	1,005	99	288	1,366
Cheyenne	462	61	98	377
Clear Creek	619	33	56	880
Conejos	1,162	40	25	654
Costilla	747	22	33	311
Crowley	669	67	80	600
Custer	365	26	36	418
Delta	1,425	632	488	1,672
Denver	22,968	4,138	2,690	33,253
Dolores	44	17	36	142
Douglas	663	31	34	474
Eagle	507	90	80	701
Elbert	881	101	90	689
El Paso	6,115	2,325	749	4,693
Fremont	2,653	247	356	2,373
Garfield	1,261	202	277	1,664
Gilpin	425	32	43	575
Grand	409	32	33	395
Gunnison	837	65	317	1,000
Hinsdale	113	6	23	117
Huerfano	2,532	56	39	2,098
Jackson	214	9	6	171
Jefferson	2,205	272	249	2,358

ABSTRACT OF VOTES CAST

ABSTRACT OF VOTES CAST AT A GENERAL ELECTION HELD ON
TUESDAY, NOVEMBER 3, A. D. 1914, FOR JUDGE OF SUPREME
COURT.—Continued.

COUNTIES	John Campbell (Rep.)	Joseph C. Ewing (Prog.)	J. Munroe Stewart (Soc.)	James H. Teller (Dem.)
Kiowa	492	103	80	572
Kit Carson	713	231	209	676
Lake	1,372	309	314	1,825
La Plata	1,072	106	248	1,927
Larimer	3,046	471	444	2,516
Las Animas	4,410	178	278	4,331
Lincoln	956	94	96	829
Logan	1,432	213	198	1,318
Mesa	1,750	950	995	2,463
Mineral	160	6	44	211
Moffat	372	37	47	355
Montezuma	445	49	108	961
Montrose	1,550	126	423	1,674
Morgan	1,462	394	159	896
Otero	2,803	177	270	2,617
Ouray	543	39	119	650
Park	401	30	42	463
Phillips	517	90	79	395
Pitkin	296	48	186	634
Prowers	1,284	303	182	1,038
Pueblo	7,090	251	905	6,944
Rio Blanco	411	36	38	464
Rio Grande	1,051	52	72	838
Routt	958	94	174	1,061
Saguache	727	61	86	770
San Juan	259	30	100	457
San Miguel	734	39	125	996
Sedgwick	447	170	51	280
Summit	268	33	50	506

ABSTRACT OF VOTES CAST

ABSTRACT OF VOTES CAST AT A GENERAL ELECTION HELD ON
TUESDAY, NOVEMBER 3, A. D. 1914, FOR JUDGE OF SUPREME
COURT.—Continued.

COUNTIES.	John Campbell (Rep.)	Joseph C. Ewing (Prog.)	J. Munroe Stewart (Soc.)	James H. Teller (Dem.)
Teller	1,703	284	449	2,757
Washington	835	156	121	705
Weld	5,231	1,478	523	4,405
Yuma	1,160	185	307	1,159
	<hr/>	<hr/>	<hr/>	<hr/>
	103,057	16,729	14,966	113,837

ABSTRACT OF VOTES CAST AT A GENERAL ELECTION HELD ON
TUESDAY, NOVEMBER 3, A. D. 1914, FOR GOVERNOR.

COUNTIES	Geo. A. Carlson (Rep.)	E. P. Costigan (Prog.)	T. M. Patterson (Dem.)	L. D. Hosman (Soc.-Lab.)	Abraham Marions (Soc.)
Adams	1,058	424	1,073	20	101
Alamosa	814	138	466	24	121
Arapahoe	1,573	890	996	28	147
Archuleta	536	47	362	5	37
Baca	550	58	438	10	97
Bent	1,025	120	580	20	30
Boulder	5,575	1,259	2,960	47	403
Chaffee	1,429	157	1,096	39	230
Cheyenne	637	56	269	15	76
Clear Creek	860	147	673	7	44
Conejos	1,424	31	563	6	24
Costilla	772	22	313	7	28
Crowley	845	63	545	18	55
Custer	443	46	367	6	19
Delta	2,108	845	1,085	91	340
Denver	29,979	12,607	24,097	391	1,723
Dolores	55	21	134	4	32
Douglas	762	74	402	3	29
Eagle	680	190	541	12	50
Elbert	959	162	619	15	64
El Paso	6,838	3,551	3,708	75	574
Fremont	3,229	405	2,010	36	260
Garfield	1,732	328	1,352	37	209
Gilpin	504	127	546	6	21
Grand	454	60	385	3	22
Gunnison	1,077	282	707	40	239
Hinsdale	132	12	98	1	21
Huerfano	2,663	195	1,959	11	23
Jackson	228	24	163	2	5
Jefferson	2,574	858	1,745	22	213
Kiowa	631	89	488	13	71
Kit Carson	821	258	626	35	162

ABSTRACT OF VOTES CAST

III

ABSTRACT OF VOTES CAST AT A GENERAL ELECTION HELD ON
TUESDAY, NOVEMBER 3, A. D. 1914, FOR GOVERNOR.—Continued.

COUNTIES	Geo. A. Carlson (Rep.)	E. P. Costigan (Prog.)	F. M. Patterson (Dem.)	L. D. Hosman (Soc.-Lab.)	Abraham Marions (Soc.)
Lake	1,502	441	2,099	43	194
La Plata	1,479	199	1,351	46	197
Larimer	3,023	1,160	2,499	50	285
Las Animas	4,635	558	4,050	34	180
Lincoln	1,126	107	756	28	62
Logan	1,768	286	1,071	32	147
Mesa	2,586	1,060	2,045	113	750
Mineral	205	15	182	5	40
Moffat	457	52	288	13	26
Montezuma	708	74	758	12	76
Montrose	2,146	175	1,231	40	324
Morgan	1,735	546	696	20	110
Otero	3,636	228	2,117	56	189
Ouray	722	116	500	13	78
Park	479	40	412	8	29
Phillips	682	131	280	3	68
Pitkin	444	117	515	21	157
Prowers	1,679	334	831	26	140
Pueblo	9,675	535	5,181	131	599
Rio Blanco	497	35	413	7	30
Rio Grande	1,291	106	653	8	50
Routt	1,219	136	927	30	129
Saguache	825	82	733	17	65
San Juan	355	85	378	9	17
San Miguel	889	100	844	26	82
Sedgwick	514	182	236	9	36
Summit	347	52	455	8	37
Teller	2,393	208	2,536	49	275
Washington	949	227	602	21	105

ABSTRACT OF VOTES CAST

ABSTRACT OF VOTES CAST AT A GENERAL ELECTION HELD ON
TUESDAY, NOVEMBER 3, A. D. 1914, FOR GOVERNOR.—Continued.

COUNTIES	Geo. A. Carlson (Rep.)	E. P. Costigan (Prog.)	T. M. Patterson (Dem.)	L. D. Hosman (Soc.-Lab.)	Abraham Marions (Soc.)
Weld	6,675	1,780	3,650	70	351
Yuma	1,488	207	985	60	218
Totals.....	129,096	33,320	95,640	2,057	10,516

ABSTRACT OF VOTES CAST AT A GENERAL ELECTION HELD ON
TUESDAY, NOVEMBER 3, A. D. 1914, FOR LIEUTENANT-GOVERNOR.

COUNTIES	Frank Kidneigh (Soc.)	Moses E. Lewis (Rep.)	Andrew Ohman (Soc.-Lab.)	John J. Tobin (Dem.)	P. H. Troutman (Prog.)
Adams	128	783	21	1,139	313
Alamosa	145	584	35	620	94
Arapahoe	202	1,313	57	1,163	604
Archuleta	43	432	7	408	51
Baca	105	507	13	446	55
Bent	44	769	15	647	156
Boulder	532	4,625	58	3,418	864
Chaffee	253	1,025	48	1,271	126
Cheyenne	93	508	10	223	55
Clear Creek	59	651	9	789	82
Conejos	32	1,197	11	622	12
Costilla	39	731	6	305	20
Crowley	59	692	22	566	78
Custer	25	372	8	398	37
Delta	425	1,340	70	1,499	859
Denver	2,702	25,731	723	24,421	8,925
Dolores	36	41	7	139	17
Douglas	35	642	3	460	51
Eagle	75	526	26	619	136
Elbert	79	863	18	640	125
El Paso	714	5,886	110	4,033	3,216
Fremont	310	4,676	54	2,135	541
Garfield	237	1,320	65	1,490	300
Gilpin	35	436	6	495	82
Grand	28	412	8	380	48
Gunnison	279	854	55	879	162
Hinsdale	23	121	...	106	5
Huerfano	26	2,531	23	2,027	110
Jackson	5	207	3	169	2
Jefferson	264	2,254	36	1,958	512
Kiowa	71	520	12	534	97

ABSTRACT OF VOTES CAST AT A GENERAL ELECTION HELD ON
TUESDAY, NOVEMBER 3, A. D. 1914, FOR LIEUTENANT-GOVERNOR.
—Continued.

COUNTIES.	Frank Kidneigh (Soc.)	Moses E. Lewis (Rep.)	Andrew Ohman (Soc.-Lab.)	John J. Tobin (Dem.)	P. H. Troutman (Prog.)
Kit Carson	178	728	35	659	234
Lake	287	1,252	59	1,833	410
La Plata	222	1,142	47	1,546	142
Larimer	866	2,854	63	2,463	733
Las Animas	247	4,408	67	4,066	339
Lincoln	78	980	25	798	84
Logan	174	1,475	41	1,194	246
Mesa	829	1,716	123	2,454	1,053
Mineral	44	156	4	203	13
Moffat	51	407	10	304	36
Montezuma	92	495	23	878	69
Montrose	374	1,608	47	1,647	176
Morgan	133	1,418	31	841	440
Otero	239	2,932	42	2,444	209
Ouray	98	461	21	690	67
Park	48	388	8	421	29
Phillips	76	519	10	373	121
Pitkin	153	318	26	552	96
Prowers	154	1,333	37	934	393
Pueblo	794	7,823	203	6,057	352
Rio Blanco	35	425	12	438	38
Rio Grande	70	1,050	20	757	110
Routt	152	959	42	1,001	132
Saguache	76	703	60	758	64
San Juan	85	266	19	421	49
San Miguel	99	624	15	1,114	49
Sedgwick	46	441	11	258	168
Summit	45	275	15	469	41
Teller	400	1,824	92	2,458	405
Washington	114	841	21	646	173

ABSTRACT OF VOTES CAST AT A GENERAL ELECTION HELD ON
 TUESDAY, NOVEMBER 3, A. D. 1914, FOR LIEUTENANT-GOVERNOR.
 —Continued.

COUNTIES	Frank Kidneigh (Soc.)	Moses E. Lewis (Rep.)	Andrew Ohman (Soc.-Lab.)	John J. Tobin (Dem.)	P. H. Troutman (Prog.)
Weld	516	5,746	86	3,935	1,278
Yuma	277	1,195	44	1,070	191
	<hr/>	<hr/>	<hr/>	<hr/>	<hr/>
	14,155	109,311	2,898	96,681	24,695

ABSTRACT OF VOTES CAST AT A GENERAL ELECTION HELD ON
TUESDAY, NOVEMBER 3, A. D. 1914, FOR SECRETARY OF STATE.

COUNTIES	Jno. W. Billings (Soc.-Lab.)	Edwin V. Brake (Dem.)	Jno. E. Ramer (Rep.)	Agnes L. Riddle (Prog.)	Lizabeth Walllms (Soc.)
Adams	24	1,035	697	592	111
Alamosa	25	561	614	155	128
Arapahoe	42	906	1,146	1,079	209
Archuleta	11	398	433	47	46
Baca	19	445	494	69	95
Bent	16	566	766	256	36
Boulder	75	2,844	4,902	1,267	526
Chaffee	66	1,209	1,024	192	235
Cheyenne	10	310	510	66	94
Clear Creek	11	751	671	70	51
Conejos	12	555	1,234	41	28
Costilla	9	281	760	22	35
Crowley	22	541	664	115	62
Custer	10	412	364	40	21
Delta	49	1,014	1,814	985	425
Denver	746	18,440	30,827	10,785	2,429
Dolores	6	135	33	26	31
Douglas	9	427	616	124	32
Eagle	23	584	517	174	68
Elbert	16	574	759	322	82
El Paso	114	4,143	6,095	2,863	659
Fremont	64	2,107	2,699	481	293
Garfield	34	1,353	1,384	386	259
Gilpin	9	500	444	74	41
Grand	10	304	464	60	30
Gunnison	43	822	926	133	281
Hinsdale	103	128	6	21
Huerfano	16	2,013	2,544	101	22
Jackson	2	113	276	20	6
Jefferson	33	1,693	2,274	811	251
Kiowa	18	540	518	111	62

ABSTRACT OF VOTES CAST AT A GENERAL ELECTION HELD ON
TUESDAY, NOVEMBER 3, A. D. 1914, FOR SECRETARY OF STATE.
—Continued.

COUNTY	Jno. W. Billings (Soc.-Lab.)	Edwin V. Brake (Dem.)	Jno. E. Ramer (Rep.)	Agnes L. Riddle (Prog.)	Lizabeth Walllms (Soc.)
Kit Carson	29	611	652	363	177
Lake	39	1,679	1,245	630	268
La Plata	48	1,491	1,167	180	228
Larimer	62	1,699	3,835	707	351
Las Animas	43	4,217	4,515	264	210
Lincoln	23	780	938	147	80
Logan	49	1,201	1,433	280	158
Mesa	126	2,037	1,766	1,391	837
Mineral	6	185	173	11	43
Moffat	9	309	405	45	36
Montezuma	16	863	472	114	95
Montrose	55	1,284	1,558	517	349
Morgan	25	693	1,218	902	133
Otero	62	2,231	2,954	383	214
Ouray	21	544	557	101	112
Park	5	404	408	52	49
Phillips	8	358	509	145	72
Pitkin	29	525	328	107	150
Prowers	32	819	1,238	607	162
Pueblo	181	5,661	8,211	449	666
Rio Blanco	9	411	444	45	39
Rio Grande	13	669	1,084	157	78
Routt	34	986	984	150	146
Saguache	15	737	701	94	75
San Juan	15	394	286	60	82
San Miguel	34	875	771	71	104
Sedgwick	12	248	437	186	41
Summit	14	435	278	65	49
Teller	58	2,427	1,841	395	423
Washington	23	618	834	222	100

ABSTRACT OF VOTES CAST

ABSTRACT OF VOTES CAST AT A GENERAL ELECTION HELD ON
TUESDAY, NOVEMBER 9, A. D. 1914, FOR SECRETARY OF STATE.
—Continued.

COUNTIES	Ino. W. Billings (Soc.-Lab.)	Edwin V. Brake (Dem.)	Jno.E. Ramer (Rep.)	Agnes L. Riddle (Prog.)	Lizabeth Walllms (Soc.)
Weld	101	3,697	5,633	1,683	416
Yuma	38	1,029	1,166	293	276
	<hr/>	<hr/>	<hr/>	<hr/>	<hr/>
	2,778	85,796	114,638	32,289	12,888

ABSTRACT OF VOTES CAST

ABSTRACT OF VOTES CAST AT A GENERAL ELECTION HELD ON
TUESDAY, NOVEMBER 3, A. D. 1914, FOR STATE AUDITOR.

COUNTIES	W. E. Buck (Prog.)	Charles Henry Hummel (Soc.)	Martin Hurwitz (Soc. Lab.)	Chas. H. Leckenby (Dem.)	Harry E. Muinix (Rep.)
Adams	311	120	14	1,209	713
Alamosa	98	137	23	587	605
Arapahoe	544	215	37	1,049	1,380
Archuleta	42	35	12	430	401
Baca	63	100	13	454	485
Bent	172	35	7	664	729
Boulder	675	587	52	3,588	4,392
Chaffee	141	275	42	1,225	992
Cheyenne	83	85	6	248	475
Clear Creek	56	47	11	835	618
Conejos	31	26	7	594	1,178
Costilla	22	41	5	292	734
Crowley	78	63	18	557	665
Custer	28	27	7	400	372
Delta	794	441	61	1,416	1,380
Denver	6,930	2,857	735	21,768	29,953
Dolores	23	35	6	130	39
Douglas	47	33	7	458	654
Eagle	37	73	12	603	575
Elbert	151	75	20	687	806
El Paso	3,050	732	66	4,380	5,411
Fremont	462	337	40	2,229	2,473
Garfield	247	252	32	1,509	1,319
Gilpin	55	36	15	502	447
Grand	43	29	10	400	386
Gunnison	102	287	38	888	884
Hinsdale	2	23	1	111	115
Huerfano	118	20	23	1,971	2,532
Jackson	15	3	1	180	199
Jefferson	395	267	33	1,929	2,318
Kiowa	109	69	7	561	484

ABSTRACT OF VOTES CAST AT A GENERAL ELECTION HELD ON
TUESDAY, NOVEMBER 3, A. D. 1914, FOR STATE AUDITOR.—Continued.

COUNTIES	W. E. Buck (Prog.)	Charles Henry Hummel (Soc.)	Martin Hurwitz (Soc.-Lab.)	Chas. H. Leckenby (Dem.)	Harry E. Muirix (Rep.)
Kit Carson	266	188	19	671	675
Lake	220	263	33	1,470	1,566
La Plata	142	229	36	1,562	1,112
Larimer	621	392	64	2,361	2,958
Las Animas	195	259	53	3,932	4,577
Lincoln	141	78	13	830	910
Logan	262	172	31	1,236	1,333
Mesa	963	900	56	2,129	2,062
Mineral	6	42	5	199	162
Moffat	33	34	9	390	337
Montezuma	43	91	21	922	483
Montrose	179	408	32	1,434	1,623
Morgan	438	146	23	803	1,467
Otero	279	234	34	2,511	2,751
Ouray	59	106	23	541	605
Park	24	45	6	420	418
Phillips	125	75	4	397	472
Pitkin	58	159	14	543	376
Prowers	419	152	32	1,051	1,128
Pueblo	1,541	872	124	5,889	6,704
Rio Blanco	41	34	6	474	399
Rio Grande	79	73	8	815	999
Routt	114	148	40	1,350	666
Saguache	55	76	19	742	705
San Juan	44	94	10	433	258
San Miguel	57	112	12	890	788
Sedgwick	162	42	10	281	420
Summit	32	39	13	483	274
Teller	352	430	59	2,448	1,754

ABSTRACT OF VOTES CAST AT A GENERAL ELECTION HELD ON TUESDAY, NOVEMBER 3, A. D. 1914, FOR STATE AUDITOR.—Continued.

COUNTIES	W. E. Buck (Prog.)	Charles Henry Hummel (Soc.)	Martin Hurwitz (Soc.-Lab.)	Chas. H. Leckenby (Dem.)	Harry E. Mulnix (Rep.)
Washington	206	104	17	665	772
Weld	1,252	510	61	3,984	5,571
Yuma	229	265	37	1,116	1,097
	<hr/>	<hr/>	<hr/>	<hr/>	<hr/>
	23,611	14,134	2,285	94,826	109,191

ABSTRACT OF VOTES CAST

ABSTRACT OF VOTES CAST AT A GENERAL ELECTION HELD ON
TUESDAY, NOVEMBER 3, A. D. 1914, FOR STATE TREASURER.

COUNTIES	F. L. Cretney (Prog.)	Roady Kenchan (Dem.)	A. T. Ljungberg (Soc. Lab.)	Allison Stocker (Rep.)	S. R. Woods (Soc.)
Adams	230	1,251	22	819	117
Alamosa	92	630	29	562	118
Arapahoe	405	1,415	35	1,367	181
Archuleta	33	453	11	382	45
Baca	62	468	14	483	97
Bent	169	610	16	801	41
Boulder	481	3,534	61	4,888	512
Chaffee	118	1,328	47	1,013	230
Cheyenne	70	353	7	483	91
Clear Creek	40	866	11	621	51
Conejos	40	630	10	1,183	26
Costilla	22	308	9	722	35
Crowley	85	510	19	728	54
Custer	36	394	10	393	18
Delta	804	1,390	55	1,476	450
Denver	4,517	26,192	546	29,465	2,211
Dolores	19	144	4	39	32
Douglas	36	483	6	604	27
Eagle	115	663	27	504	68
Elbert	108	710	20	857	65
El Paso	3,232	4,370	111	5,323	681
Fremont	332	2,262	41	2,676	252
Garfield	233	1,548	37	1,324	225
Gilpin	34	572	15	430	31
Grand	30	343	5	451	34
Gunnison	63	993	36	847	259
Hinsdale	7	105	1	126	22
Huerfano	48	2,112	16	2,469	19
Jackson	18	173	2	198	5
Jefferson	292	2,296	33	2,256	239

ABSTRACT OF VOTES CAST

ABSTRACT OF VOTES CAST AT A GENERAL ELECTION HELD ON
TUESDAY, NOVEMBER 3, A. D. 1914, FOR STATE TREASURER.—
Continued.

COUNTIES	F. L. Cretney (Prog.)	Roady Kenehan (Dem.)	A. T. Ljungberg (Soc. Lab.)	Allison Stocker (Rep.)	S. R. Woods (Soc.)
Kiowa	99	523	11	524	67
Kit Carson	239	672	28	714	183
Lake	849	1,796	49	768	205
La Plata	117	1,650	39	1,112	201
Larimer	546	2,307	55	3,199	365
Las Animas	132	4,398	47	4,266	169
Lincoln	94	828	29	954	73
Logan	212	1,280	34	1,470	156
Mesa	1,091	2,291	95	1,821	814
Mineral	6	227	3	153	39
Moffat	46	311	14	395	37
Montezuma	69	897	13	483	96
Montrose	186	1,384	41	1,702	308
Morgan	399	909	29	1,434	147
Otero	211	2,257	59	2,990	202
Ouray	55	646	16	542	100
Park	38	437	11	397	37
Phillips	102	382	13	518	80
Pitkin	80	592	26	316	139
Prowers	340	903	26	1,350	158
Pueblo	268	5,505	146	8,371	659
Rio Blanco	48	421	11	436	31
Rio Grande	77	790	13	1,047	70
Routt	111	1,004	27	1,011	148
Saguache	65	779	18	700	68
San Juan	31	499	10	241	72
San Miguel	58	1,004	20	690	101
Sedgwick	167	266	13	447	36
Summit	38	476	16	281	45
Teller	350	2,661	70	1,736	347

ABSTRACT OF VOTES CAST

ABSTRACT OF VOTES CAST AT A GENERAL ELECTION HELD ON
TUESDAY, NOVEMBER 3, A. D. 1914, FOR STATE TREASURER.—
Continued.

COUNTIES	F. L. Cretney (Prog.)	Roady Kenehan (Dem.)	A. T. Ljungberg (Soc. Lab.)	Allison Stocker (Rep.)	S. R. Woods (Soc.)
Washington	166	662	15	838	114
Weld	1,088	4,086	111	5,847	467
Yuma	199	1,052	55	1,214	275
	<hr/>	<hr/>	<hr/>	<hr/>	<hr/>
	19,348	101,001	2,419	111,457	12,245

ABSTRACT OF VOTES CAST

125

ABSTRACT OF VOTES CAST AT A GENERAL ELECTION HELD ON
TUESDAY, NOVEMBER 3, A. D. 1914, FOR ATTORNEY GENERAL.

COUNTIES	Marshall DeWitt (Soc.)	Fred Larrar (Dem.)	Wm. B. Gobin (Rep.)	Merl D. Vincent (Prog.)
Adams	140	1,317	600	305
Alamosa	151	658	514	96
Arapahoe	218	1,419	999	637
Archuleta	46	508	345	39
Baca	114	542	475	59
Bent	43	777	639	187
Boulder	592	4,479	3,507	858
Chaffee	312	1,329	834	196
Cheyenne	90	424	401	51
Clear Creek	60	870	513	72
Conejos	27	652	1,126	36
Costilla	37	335	683	22
Crowley	66	616	637	79
Custer	36	410	352	38
Delta	446	1,319	870	1,636
Denver	3,003	33,843	14,760	9,477
Dolores	37	134	30	24
Douglas	39	515	585	44
Eagle	89	656	465	144
Elbert	83	680	799	145
El Paso	760	4,587	4,546	3,947
Fremont	384	2,525	1,856	748
Garfield	272	1,585	1,107	331
Gilpin	38	548	391	56
Grand	36	388	366	43
Gunnison	312	957	742	175
Hinsdale	21	113	106	9
Huerfano	39	1,880	2,407	54
Jackson	6	198	161	15
Jefferson	268	2,224	1,898	534

ABSTRACT OF VOTES CAST

ABSTRACT OF VOTES CAST AT A GENERAL ELECTION HELD ON
TUESDAY, NOVEMBER 3, A. D. 1914, FOR ATTORNEY GENERAL.—
Continued.

COUNTIES	Marshall DeWitt (Soc.)	Fred Farrar (Dem.)	Wm. B. Gobin (Rep.)	Merl D. Vincent (Prog.)
Kiowa	74	582	467	90
Kit Carson	206	713	654	240
Lake	279	1,722	933	583
La Plata	261	1,730	932	147
Larimer	404	3,612	1,896	551
Las Animas	309	3,551	3,931	1,194
Lincoln	88	887	893	77
Logan	191	1,310	1,290	295
Mesa	964	2,255	1,288	1,438
Mineral	42	222	136	13
Moffat	42	341	366	47
Montezuma	96	953	392	109
Montrose	416	1,681	1,233	383
Morgan	165	982	1,241	473
Otero	868	2,820	2,504	270
Ouray	113	635	455	133
Park	51	442	374	37
Phillips	79	381	484	111
Pitkin	164	625	259	74
Prowers	168	1,166	1,014	411
Pueblo	829	7,188	5,938	922
Rio Blanco	33	452	397	42
Rio Grande	70	954	865	69
Routt	184	1,137	782	179
Saguache	82	805	652	69
San Juan	97	456	228	58
San Miguel	116	1,000	633	92
Sedgwick	44	268	407	184
Summit	53	493	252	41
Teller	475	2,660	1,361	567

ABSTRACT OF VOTES CAST

ABSTRACT OF VOTES CAST AT A GENERAL ELECTION HELD ON
TUESDAY, NOVEMBER 3, A. D. 1914, FOR ATTORNEY GENERAL.—
Continued.

COUNTIES	Marshall DeWitt (Soc.)	Fred Farrar (Dem.)	Wm. B. Gobin (Rep.)	Merl D. Vincent (Prog.)
Washington	120	692	735	170
Weld	534	4,658	4,756	1,369
Yuma	293	1,176	1,074	185
Totals.....	14,705	115,062	80,566	30,780

ABSTRACT OF VOTES CAST AT A GENERAL ELECTION HELD ON
TUESDAY, NOVEMBER 3, A. D. 1914, FOR SUPERINTENDENT OF
PUBLIC INSTRUCTION.

COUNTY	Mary C. C. Bradford (Dem.)	Katherine L. Craig (Rep.)	Florence E. Dick (Prog.)	Mary Ginther (Soc. Lab.)	Jennie McGehe (Soc.)
Adams	1,418	740	214	25	103
Alamosa	660	609	69	26	117
Arapahoe	1,456	1,244	455	41	174
Archuleta	434	432	41	9	36
Baca	472	498	52	18	89
Bent	747	701	153	118	33
Boulder	3,869	4,463	530	64	554
Chaffee	1,357	1,000	110	50	227
Cheyenne	364	501	58	3	87
Clear Creek	857	585	59	19	39
Conejos	646	1,182	33	13	22
Costilla	337	728	23	6	37
Crowley	531	735	67	22	54
Custer	436	383	22	6	23
Delta	1,614	1,423	684	68	429
Denver	27,390	24,027	6,849	667	2,298
Dolores	135	37	18	4	34
Douglas	512	617	49	5	26
Eagle	653	543	85	14	79
Elbert	722	845	113	15	73
El Paso	4,726	5,727	2,513	114	677
Fremont	2,374	2,592	267	50	299
Garfield	1,704	1,248	117	35	234
Gilpin	555	448	39	11	31
Grand	365	420	29	5	29
Gunnison	974	877	73	33	265
Hinsdale	107	120	5	1	19
Huerfano	2,032	2,476	123	20	13
Jackson	176	204	11	1	6

ABSTRACT OF VOTES CAST AT A GENERAL ELECTION HELD ON
TUESDAY, NOVEMBER 3, A. D. 1914, FOR SUPERINTENDENT OF
PUBLIC INSTRUCTION.—Continued.

COUNTIES	Mary C. C. Bradford (Dem.)	Katherine L. Craig (Rep.)	Florence E. Dick (Prog.)	Mary Glinther (Soc. Lab.)	Jennie McGehe (Soc.)
Jefferson	2,216	2,111	437	33	237
Kiowa	567	514	90	9	59
Kit Carson	721	688	226	23	204
Lake	1,682	1,347	237	47	247
La Plata	1,647	1,154	120	46	201
Larimer	2,692	2,511	561	56	401
Las Animas	4,134	4,233	325	84	246
Lincoln	856	961	79	17	69
Logan	1,333	1,436	214	27	145
Mesa	2,513	1,732	940	106	831
Mineral	212	165	8	7	38
Moffat	327	404	33	15	33
Montezuma	954	505	41	15	83
Montrose	1,530	1,574	156	43	371
Morgan	1,059	1,379	392	29	121
Otero	2,654	2,767	192	37	210
Ouray	638	519	61	18	97
Park	469	392	27	11	40
Phillips	445	503	91	11	63
Pitkin	601	312	63	33	143
Prowers	1,107	1,250	306	27	149
Pueblo	6,532	7,062	400	167	728
Río Blanco	476	416	20	8	29
Río Grande	855	1,001	73	11	60
Routt	1,051	938	104	32	147
Saguache	766	739	57	11	74
San Juan	446	270	42	10	89
San Miguel	995	687	43	20	84
Sedgwick	294	431	167	10	39
Summit	477	279	39	14	36
Teller	2,723	1,693	327	62	402

ABSTRACT OF VOTES CAST

ABSTRACT OF VOTES CAST AT A GENERAL ELECTION HELD ON
TUESDAY, NOVEMBER 3, A. D. 1914, FOR SUPERINTENDENT OF
PUBLIC INSTRUCTION.—Continued.

COUNTIES	Mary C. C. Bradford (Dem.)	Katherine L. Craigs (Rep.)	Florence E. Dick (Prog.)	Mary Ginther (Soc. Lab.)	Jennie McGehe (Soc.)
Washington	715	814	143	13	103
Weld	4,531	5,429	1,096	87	481
Yuma	1,125	1,240	163	56	243
Totals.....	106,976	102,171	21,134	2,658	12,610

ABSTRACT OF VOTES CAST AT A GENERAL ELECTION HELD ON
 TUESDAY, NOVEMBER 3, A. D. 1914, FOR REGENTS OF THE UNI-
 VERSITY OF COLORADO. (LONG TERM.)

ABSTRACT OF VOTES CAST

COUNTY	George Anderson (Soc. Lab.)	Randolph Cook (Prog.)	Ludwig Gintner (Soc. Lab.)	Minnie L. Harding (Dem.)	Clifford C. Parks (Rep.)	Calvin B. Thompson (Soc.)	E. D. Webb (Dem.)	Thomas L. Wilkinson (Rep.)
Adams	60	306	36	986	700	131	883	552
Alamosa	56	124	24	574	545	147	397	413
Arapahoe	98	634	67	1,029	1,136	283	874	914
Archuleta	20	38	11	357	364	46	305	308
Baca	26	71	19	407	400	96	306	342
Bent	22	200	9	582	668	45	455	569
Boulder	134	783	104	3,106	4,065	560	3,765	3,413
Delta	105	839	74	1,153	885	282	960	697
Cheyenne	16	89	9	300	391	95	234	347
Clear Creek	31	66	15	704	565	57	529	408
Conejos	17	33	4	519	1,079	23	443	911
Costilla	10	29	9	274	678	35	257	624
Crowley	26	81	17	511	603	70	414	493
Custer	8	32	4	335	297	26	279	258

ABSTRACT OF VOTES CAST

ABSTRACT OF VOTES CAST AT A GENERAL ELECTION, HELD ON TUESDAY, NOVEMBER 3, A. D. 1914, FOR REGENTS OF THE UNIVERSITY OF COLORADO. (LONG TERM.)—Continued.

COUNTIES.	George Anderson (Sec. Lab.)	Randolph Cook (Prog.)	Ludwig Ginther (Sec. Lab.)	Minnie L. Harding (Dem.)	Gifford C. Parks (Rep.)	Calvin B. Thompson (Sec.)	E. D. Webb (Dem.)	Thomas L. Wilkinson (Rep.)
Chaffee	105	138	53	1,368	1,254	460	1,015	923
Denver	1,683	13,324	1,152	18,908	21,494	3,475	17,166	22,496
Dolores	8	23	5	109	31	39	81	26
Douglas	26	53	11	386	535	36	345	467
Eagle	32	117	23	513	523	79	478	397
Elbert	22	144	25	593	714	77	457	585
El Paso	263	3,419	224	4,437	5,344	889	3,599	5,168
Fremont	117	486	74	2,674	2,038	340	1,729	1,647
Garfield	53	236	58	1,158	1,598	245	1,000	942
Gilpin	29	56	10	421	387	36	391	335
Grand	10	46	8	300	372	36	241	248
Gunnison	82	134	49	758	753	301	701	610
Hinsdale	6	8	2	92	104	21	89	88
Huerfano	23	123	23	1,993	2,333	22	1,760	2,131

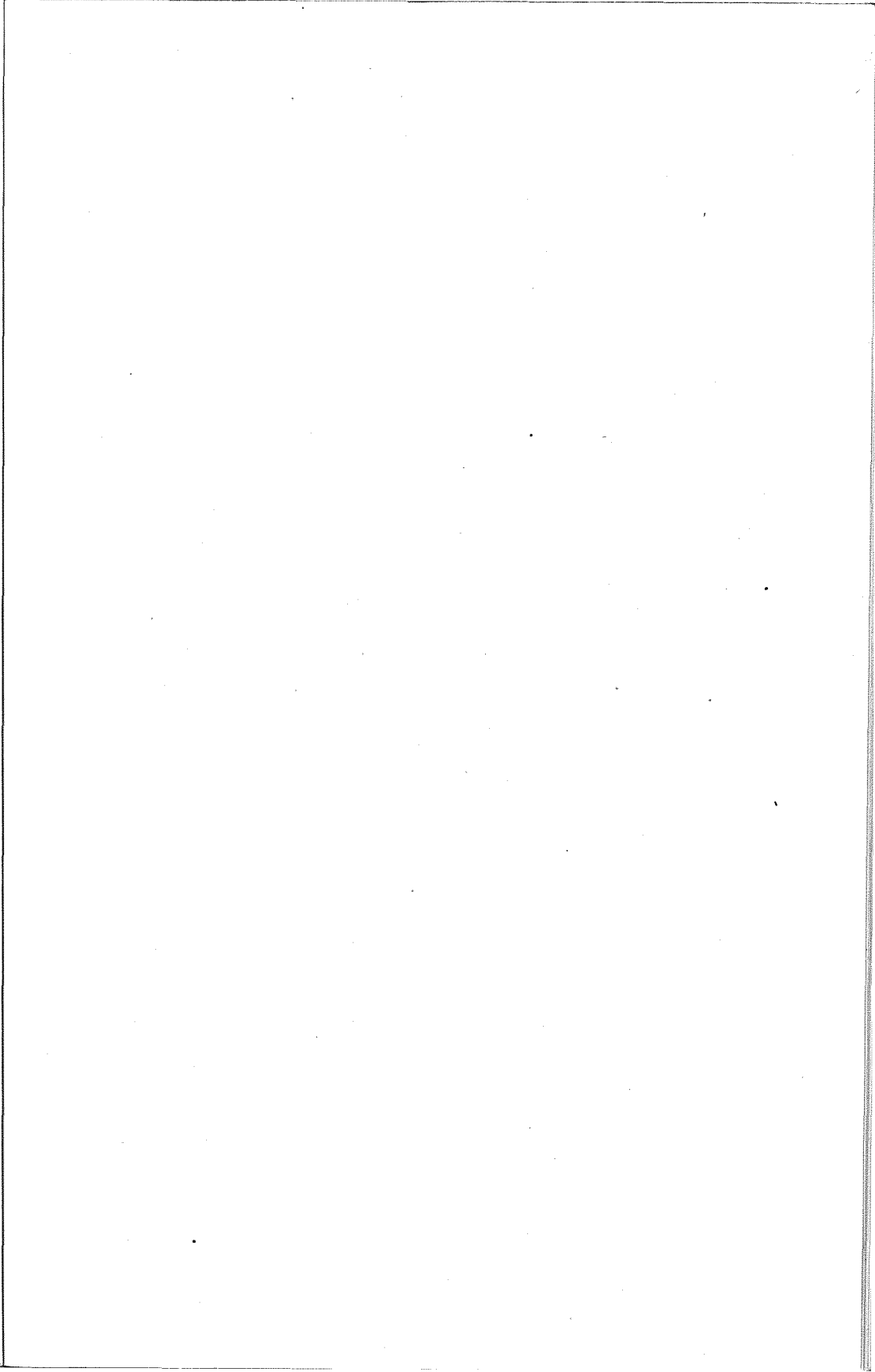
ABSTRACT OF VOTES CAST

Jackson	4	15	4	132	180	4	87	135
Jefferson	73	509	58	1,714	1,924	284	1,419	1,570
Kiowa	18	114	23	491	453	62	391	332
Kit Carson	44	253	29	557	600	186	476	541
Lake	105	444	66	1,502	1,127	286	1,251	972
La Plata	63	132	48	1,407	936	240	1,202	761
Larimer	118	729	60	2,122	2,652	408	1,431	1,930
Las Animas	107	1,505	70	3,621	3,937	304	3,076	3,470
Lincoln	39	106	29	684	861	82	598	649
Logan	69	301	30	1,118	1,188	170	846	954
Mesa	162	1,089	138	1,883	1,721	890	1,541	1,176
Mineral	8	9	6	178	148	32	136	98
Moffat	21	47	8	301	341	38	231	232
Montezuma	36	81	24	759	416	98	602	300
Montrose	74	253	66	1,339	1,386	417	1,126	1,091
Morgan	47	464	34	762	1,271	152	595	974
Otero	99	336	69	2,293	2,452	215	2,039	2,100
Ouray	39	85	23	488	455	144	400	342
Park	19	33	10	388	352	39	338	290
Phillips	21	117	13	348	442	74	298	359
Pitkin	42	76	25	460	318	161	362	211
Powers	55	417	32	927	1,089	171	730	946
Pueblo	393	532	302	6,022	6,726	940	5,225	6,130
Rio Blanco	13	38	4	357	402	33	289	269

ABSTRACT OF VOTES CAST

ABSTRACT OF VOTES CAST AT A GENERAL ELECTION HELD ON
TUESDAY, NOVEMBER 3, A. D. 1914, FOR REGENTS OF THE UNI-
VERSITY OF COLORADO. (LONG TERM.)—Continued.

COUNTIES	George Anderson (Soc. Lab.)	Randolph Cook (Prog.)	Ludwig Gintner (Soc. Lab.)	Minnie L. Harding (Dem.)	Clifford C. Parks (Rep.)	Calvin B. Thompson (Soc.)	E. D. Webb (Dem.)	Thomas L. Wiklison (Rep.)
Rio Grande	19	87	16	701	848	67	573	675
Rout	53	119	56	878	846	182	713	632
Saguache	39	70	19	659	631	75	499	452
San Juan	29	44	24	361	232	97	316	198
San Miguel	35	63	26	844	659	96	694	517
Sedgwick	17	176	10	247	389	42	192	308
Summit	12	35	11	387	244	45	351	205
Teller	170	545	126	2,262	1,567	466	1,901	1,349
Washington	34	165	19	571	690	115	418	518
Weld	207	1,362	139	3,798	4,899	543	3,266	4,399
Yuma	69	204	58	947	1,014	257	725	788
Totals.....	5,434	32,192	3,794	86,055	98,302	15,317	73,491	82,218



ABSTRACT OF VOTES CAST AT A GENERAL ELECTION HELD ON
TUESDAY, NOVEMBER 3, A. D. 1914, FOR REGENT OF THE UNI-
VERSITY OF COLORADO. (TO FILL VACANCY.)

COUNTY	Chas. R. Dudley (Rep.)	O. N. Galbreath, Jr. (Dem.)
Adams	928	1,132
Alamosa	668	662
Arapahoe	1,449	1,285
Archuleta	372	592
Baca	546	470
Bent	785	627
Boulder	4,325	3,374
Chaffee	1,059	1,334
Cheyenne	521	370
Clear Creek	620	742
Conejos	1,168	589
Costillo	736	327
Crowley	648	535
Custer	374	413
Delta	1,682	1,644
Denver	24,375	21,407
Dolores	52	141
Douglas	621	466
Eagle	575	634
Elbert	912	656
El Paso	7,109	4,824
Fremont	2,535	2,324
Garfield	1,330	1,498
Gilpin	445	488
Grand	408	340
Gunnison	921	965
Hinsdale	113	110
Huerfano	2,363	1,935
Jackson	213	131
Jefferson	2,252	1,976
Kiowa	553	500
Kit Carson	847	704
Lake	1,288	1,663

ABSTRACT OF VOTES CAST AT A GENERAL ELECTION HELD ON TUESDAY, NOVEMBER 3, A. D. 1914, FOR REGENT OF THE UNIVERSITY OF COLORADO. (TO FILL VACANCY).—Continued.

COUNTIES	Chas. R. Dudley (Rep.)	O. S. Galbreath, Jr. (Dem.)
La Plata	1,037	1,723
Larimer	2,871	2,203
Las Animas	4,214	4,037
Lincoln	965	759
Logan	1,486	1,269
Mesa	2,304	2,164
Mineral	162	191
Moffat	384	343
Montezuma	505	933
Montrose	1,557	1,522
Morgan	1,624	893
Otero	2,577	2,377
Ouray	572	599
Park	408	426
Phillips	546	426
Pitkin	348	570
Prowers	1,416	1,022
Pueblo	6,834	6,107
Rio Blanco	442	459
Rio Grande	992	868
Routt	965	1,017
Saguache	724	757
San Juan	280	456
San Miguel	726	952
Sedgwick	524	294
Summitt	294	503
Teller	1,889	2,517
Washington	861	686
Weld	5,665	4,244
Yuma	1,284	1,107
	<hr/>	<hr/>
	107,249	96,282

ABSTRACT OF VOTES CAST

ABSTRACT OF VOTES CAST AT A GENERAL ELECTION HELD ON TUESDAY, NOVEMBER 3, A. D. 1914, FOR AMENDMENTS. YES AND NO.

1. FOR THE AMENDMENT TO SECTION 1 OF ARTICLE V. OF THE CONSTITUTION RELATIVE TO THE INITIATIVE AND REFERENDUM.

COUNTIES.	Yes.	No.
Adams	509	885
Alamosa	304	622
Arapahoe	744	1,414
Archuleta	207	343
Baca	185	478
Bent	290	1,042
Boulder	1,652	5,267
Chaffee	726	1,173
Cheyenne	159	401
Clear Creek	417	471
Conejos	316	544
Costilla	167	150
Crowley	354	771
Custer	132	254
Delta	575	2,503
Denver	18,448	28,568
Dolores	62	47
Douglas	196	447
Eagle	209	450
Elbert	353	639
El Paso	2,507	8,532
Fremont	905	3,170
Garfield	873	1,417
Gilpin	281	265
Grand	204	224
Gunnison	367	693
Hinsdale	66	74
Huerfano	1,130	909
Jackson	132	92
Jefferson	1,189	1,925
Kiowa	170	581
Kit Carson	309	778
Lake	1,648	1,060
La Plata	779	1,241

ABSTRACT OF VOTES CAST AT A GENERAL ELECTION HELD ON TUESDAY, NOVEMBER 3, A. D. 1914, FOR AMENDMENTS. YES AND NO.—Continued.

1. FOR THE AMENDMENT TO SECTION 1 OF ARTICLE V. OF THE CONSTITUTION RELATIVE TO THE INITIATIVE AND REFERENDUM.—Continued.

COUNTIES.	Yes.	No.
Larimer	864	3,688
Las Animas	1,961	2,979
Lincoln	415	770
Logan	510	1,548
Mesa	917	3,791
Mineral	80	131
Moffat	138	306
Montezuma	259	795
Montrose	606	2,090
Morgan	424	1,597
Otero	916	3,393
Ouray	381	480
Park	150	229
Phillips	135	452
Pitkin	253	377
Prowers	425	1,548
Pueblo	4,453	7,566
Rio Blanco	257	220
Rio Grande	336	1,033
Routt	449	665
Saguache	274	572
San Juan	327	165
San Miguel	647	475
Sedgwick	174	387
Summit	176	256
Teller	1,214	1,436
Washington	297	688
Weld	1,602	6,000
Yuma	462	1,470
	<hr/>	<hr/>
	55,667	112,537

55667

56876

ABSTRACT OF VOTES CAST AT A GENERAL ELECTION HELD ON TUESDAY, NOVEMBER 3, A. D. 1914, FOR AMENDMENTS. YES AND NO.—Continued.

2. AN AMENDMENT TO THE CONSTITUTION OF THE STATE OF COLORADO BY ADDING THERETO A NEW ARTICLE, TO BE NUMBERED AND DESIGNATED AS "ARTICLE XXII—INTOXICATING LIQUORS," PROHIBITING THE SALE OF INTOXICATING LIQUORS AND THE MANUFACTURE AND IMPORTATION OF INTOXICATING LIQUORS FOR PURPOSES OF SALE OR GIFT.

COUNTIES.	Yes.	No.
Adams	1,180	1,299
Alamosa	792	626
Arapahoe	1,737	1,734
Archuleta	387	453
Baca	629	304
Bent	1,223	543
Boulder	5,852	3,671
Chaffee	1,427	1,380
Cheyenne	560	282
Clear Creek	723	890
Conejos	1,029	670
Costilla	382	254
Crowley	976	577
Custer	263	496
Delta	2,969	1,254
Denver	29,553	38,139
Dolores	52	132
Douglas	535	646
Eagle	539	722
Elbert	853	814
El Paso	9,171	5,144
Fremont	3,277	2,197
Garfield	1,887	1,447
Gilpin	432	715
Grand	277	564
Gunnison	793	1,261
Hinsdale	111	100
Huerfano	1,371	2,031
Jackson	170	224
Jefferson	2,328	2,721
Kiowa	812	378
Kit Carson	1,005	664

ABSTRACT OF VOTES CAST AT A GENERAL ELECTION HELD ON TUESDAY, NOVEMBER 3, A. D. 1914, FOR AMENDMENTS. YES AND NO.—Continued.

2. AN AMENDMENT TO THE CONSTITUTION OF THE STATE OF COLORADO BY ADDING THERETO A NEW ARTICLE, TO BE NUMBERED AND DESIGNATED AS "ARTICLE XXII—INTOXICATING LIQUORS," PROHIBITING THE SALE OF INTOXICATING LIQUORS AND THE MANUFACTURE AND IMPORTATION OF INTOXICATING LIQUORS FOR PURPOSES OF SALE OR GIFT.—Continued.

COUNTIES.	Yes.	No.
Lake	1,149	2,420
La Plata	1,528	1,438
Larimer	4,106	2,333
Las Animas	2,596	5,416
Lincoln	1,123	743
Logan	1,956	1,031
Mesa	3,883	2,349
Mineral	215	184
Moffat	350	375
Montezuma	1,015	498
Montrose	2,420	1,208
Morgan	1,900	1,021
Otero	4,286	1,695
Ouray	703	655
Park	291	550
Phillips	555	376
Pitkin	412	644
Prowers	1,818	934
Pueblo	1,739	8,273
Rio Blanco	321	500
Rio Grande	1,458	560
Routt	1,158	1,080
Saguache	871	689
San Juan	216	636
San Miguel	688	1,098
Sedgwick	500	378
Summit	315	511
Teller	2,558	2,480
Washington	893	767
Weld	7,471	3,830
Yuma	1,800	1,008
	129,589	118,017

ABSTRACT OF VOTES CAST AT A GENERAL ELECTION HELD ON TUESDAY, NOVEMBER 3, A. D. 1914, FOR AMENDMENTS. YES AND NO.—Continued.

3. FOR THE BETTER AND LESS EXPENSIVE ADMINISTRATION OF JUSTICE BY AMENDING ARTICLE II OF THE CONSTITUTION; PROVIDING A THREE-FOURTHS JURY VERDICT IN CIVIL CASES AND PERMITTING WOMEN, WHERE WILLING, TO SERVE ON JURIES.

COUNTIES.	Yes.	No.
Adams	679	601
Alamosa	464	328
Arapahoe	1,120	785
Archuleta	229	222
Baca	320	228
Bent	389	506
Boulder	2,324	3,731
Chaffee	691	882
Cheyenne	323	231
Clear Creek	396	404
Conejos	252	353
Costilla	141	77
Crowley	338	434
Custer	119	230
Delta	1,285	1,282
Denver	21,449	20,848
Dolores	58	53
Douglas	271	355
Eagle	329	356
Elbert	453	385
El Paso	4,011	5,520
Fremont	1,085	2,342
Garfield	1,020	955
Gilpin	240	249
Grand	211	223
Gunnison	463	695
Hinsdale	50	84
Huerfano	656	809
Jackson	179	69
Jefferson	1,390	1,382
Kiowa	307	401
Kit Carson	483	490
Lake	565	965

ABSTRACT OF VOTES CAST AT A GENERAL ELECTION HELD ON TUESDAY, NOVEMBER 3, A. D. 1914, FOR AMENDMENTS, YES AND NO.—Continued.

3. FOR THE BETTER AND LESS EXPENSIVE ADMINISTRATION OF JUSTICE BY AMENDING ARTICLE II OF THE CONSTITUTION; PROVIDING A THREE-FOURTHS JURY VERDICT IN CIVIL CASES AND PERMITTING WOMEN, WHERE WILLING, TO SERVE ON JURIES.—Continued.

COUNTIES.	Yes.	No.
La Plata	809	1,072
Larimer	1,660	2,175
Las Animas	1,447	2,621
Lincoln	555	461
Logan	955	662
Mesa	1,580	2,182
Mineral	120	86
Moffat	217	260
Montezuma	438	510
Montrose	1,413	919
Morgan	882	926
Otero	1,513	1,837
Ouray	313	416
Park	210	213
Phillips	237	292
Pitkin	305	359
Prowers	770	814
Pueblo	2,713	6,268
Rio Blanco	241	264
Rio Grande	592	468
Routt	713	497
Saguache	464	340
San Juan	191	193
San Miguel	462	541
Sedgwick	213	203
Summit	150	285
Teller	1,539	945
Washington	500	472
Weld	2,766	3,834
Yuma	872	898
	<hr/>	<hr/>
	67,130	77,488

ABSTRACT OF VOTES CAST AT A GENERAL ELECTION HELD ON TUESDAY, NOVEMBER 3, A. D. 1914. FOR AMENDMENTS. YES AND NO.—Continued.

4. FOR EXTENDING THE PEOPLE'S POWER UNDER THE INITIATIVE AND REFERENDUM BY ADDING AN AMENDMENT TO ARTICLE V OF THE CONSTITUTION, TO BE KNOWN AS SECTION 1-A.

COUNTIES.	Yes.	No.
Adams	465	515
Alamosa	308	323
Arapahoe	794	730
Archuleta	156	179
Baca	199	210
Bent	207	533
Boulder	1,468	3,843
Chaffee	444	866
Cheyenne	180	248
Clear Creek	282	382
Conejos	147	321
Costilla	105	55
Crowley	195	411
Custer	72	208
Delta	651	1,456
Denver	11,608	24,912
Dolores	50	42
Douglas	184	345
Eagle	234	307
Elbert	307	320
El Paso	1,758	6,771
Fremont	662	2,261
Garfield	597	958
Gilpin	142	240
Grand	157	178
Gunnison	342	613
Hinsdale	29	86
Huerfano	438	661
Jackson	81	108
Jefferson	842	1,385
Kiowa	158	434
Kit Carson	307	478
Lake	417	833
La Plata	595	1,058

ABSTRACT OF VOTES CAST AT A GENERAL ELECTION HELD ON TUESDAY, NOVEMBER 3, A. D. 1914, FOR AMENDMENTS. YES AND NO.--Continued.

1. FOR EXTENDING THE PEOPLE'S POWER UNDER THE INITIATIVE AND REFERENDUM BY ADDING AN AMENDMENT TO ARTICLE V OF THE CONSTITUTION, TO BE KNOWN AS SECTION 1-A.—Continued.

COUNTIES.	Yes.	No.
Larimer	881	2,290
Las Animas	1,054	2,416
Lincoln	362	376
Logan	630	581
Mesa	1,424	1,617
Mineral	82	78
Moffat	167	223
Montezuma	292	483
Montrose	924	979
Morgan	580	893
Otero	860	1,905
Ouray	236	375
Park	127	194
Phillips	161	270
Pitkin	214	373
Prowers	445	812
Pueblo	1,778	6,113
Rio Blanco	190	234
Rio Grande	380	515
Routt	498	489
Saguache	278	341
San Juan.....	118	159
San Miguel	307	467
Sedgwick	154	184
Summit	120	261
Teller	1,076	793
Washington	371	429
Weld	1,752	3,903
Yuma	601	954
	40,643	80,977

ABSTRACT OF VOTES CAST AT A GENERAL ELECTION HELD ON TUESDAY, NOVEMBER 3, A. D. 1914, FOR AMENDMENTS. YES AND NO.—Continued.

5. FOR A CHILD WELFARE COMMISSION TO SERVE WITHOUT PAY OR PERSONAL EXPENSES FROM THE STATE, TO CODIFY THE LAWS OF THE STATE RELATING TO WOMEN AND CHILDREN. —Continued.

COUNTIES.	Yes.	No.
Adams	782	437
Alamosa	485	277
Arapahoe	1,317	574
Archuleta	296	155
Baca	359	171
Bent	400	431
Boulder	2,465	3,443
Chaffee	791	725
Cheyenne	296	206
Clear Creek	485	302
Conejos	280	271
Costilla	200	62
Crowley	371	353
Custer	156	206
Delta	1,321	1,109
Denver	18,815	22,778
Dolores	64	41
Douglas	267	332
Eagle	416	253
Elbert	510	280
El Paso	3,248	6,051
Fremont	1,166	2,118
Garfield	1,038	874
Gilpin	286	201
Grand	264	157
Gunnison	540	552
Hinsdale	57	73
Huerfano	740	673
Jackson	159	81
Jefferson	1,527	1,177
Kiowa	293	374
Kit Carson	536	425
Lake	713	774

ABSTRACT OF VOTES CAST AT A GENERAL ELECTION HELD ON TUESDAY, NOVEMBER 3, A. D. 1914, FOR AMENDMENTS, YES AND NO.—Continued.

5. FOR A CHILD WELFARE COMMISSION TO SERVE WITHOUT PAY OR PERSONAL EXPENSES FROM THE STATE, TO CODIFY THE LAWS OF THE STATE RELATING TO WOMEN AND CHILDREN.

COUNTIES.	Yes.	No.
La Plata	840	981
Larimer	1,637	2,004
Las Animas	1,909	2,063
Lincoln	574	335
Logan	1,007	515
Mesa	2,276	1,288
Mineral	168	48
Moffat	219	224
Montezuma	508	399
Montrose	1,465	731
Morgan	955	790
Otero	1,454	1,721
Ouray	407	347
Park	251	162
Phillips	267	237
Pitkin	385	284
Prowers	780	687
Pueblo	3,097	5,725
Rio Blanco	277	205
Rio Grande	656	411
Routt	750	456
Saguache	486	263
San Juan	192	158
San Miguel	558	420
Sedgwick	238	171
Summit	218	239
Teller	1,780	646
Washington	548	365
Weld	2,941	3,484
Yuma	756	827
	68,242	72,122

ABSTRACT OF VOTES CAST AT A GENERAL ELECTION HELD ON
TUESDAY, NOVEMBER 3, A. D. 1914, FOR AMENDMENTS. YES AND
NO.—Continued.

6. FOR THE LAW PERMITTING PROBATION IN CERTAIN CRIMINAL
CASES OF MINORS AND FIRST OFFENDERS ONLY.

COUNTIES.	Yes.	No.
Adams	667	452
Alamosa	406	315
Arapahoe	1,177	569
Archuleta	178	161
Baca	310	164
Bent	323	431
Boulder	2,312	3,103
Chaffee	629	709
Cheyenne	239	224
Clear Creek	404	277
Conejos	183	283
Costilla	136	52
Crowley	303	362
Custer	101	206
Delta	974	1,218
Denver	19,772	20,365
Dolores	55	40
Douglas	255	306
Eagle	337	271
Elbert	378	309
El Paso	3,389	5,498
Fremont	1,270	1,890
Garfield	866	777
Gilpin	222	176
Grand	207	179
Gunnison	426	564
Hinsdale	41	69
Huerfano	564	664
Jackson	193	44
Jefferson	1,362	1,114
Kiowa	234	390
Kit Carson	413	419
Lake	581	746
La Plata	728	952

ABSTRACT OF VOTES CAST AT A GENERAL ELECTION HELD ON TUESDAY, NOVEMBER 3, A. D. 1914, FOR AMENDMENTS. YES AND NO.—Continued.

6. FOR THE LAW PERMITTING PROBATION IN CERTAIN CRIMINAL CASES OF MINORS AND FIRST OFFENDERS ONLY.—Continued.

COUNTIES.	Yes.	No.
Larimer	1,431	1,909
Las Animas	1,494	2,264
Lincoln	436	356
Logan	920	496
Mesa	1,801	1,609
Mineral	104	76
Moffat	189	218
Montezuma	334	459
Montrose	1,246	783
Morgan	812	780
Otero	1,272	1,642
Ouray	317	331
Park	191	161
Phillips	215	235
Pitkin	281	288
Prowers	679	675
Pueblo	3,007	5,306
Rio Blanco	200	230
Rio Grande	595	367
Routt	681	397
Saguache	402	253
San Juan.....	135	157
San Miguel.....	444	396
Sedgwick	209	157
Summit	173	227
Teller	1,516	648
Washington	451	392
Weld	2,664	3,521
Yuma	727	875
	<hr/>	<hr/>
	62,561	68,512

ABSTRACT OF VOTES CAST AT A GENERAL ELECTION HELD ON
TUESDAY, NOVEMBER 3, A. D. 1914, FOR AMENDMENTS. YES AND
NO.—Continued.

7. FOR BETTER ROADS.

COUNTIES.	Yes.	No.
Adams	1,287	405
Alamosa	813	137
Arapahoe	1,785	525
Archuleta	496	108
Baca	421	197
Bent	635	396
Boulder	4,962	2,037
Chaffee	1,369	593
Cheyenne	380	203
Clear Creek	1,017	135
Conejos	673	235
Costilla	244	43
Crowley	820	211
Custer	400	155
Delta	1,082	1,775
Denver	36,160	14,073
Dolores	105	28
Douglas	613	250
Eagle	696	151
Elbert	757	309
El Paso	8,113	2,744
Fremont	2,482	1,404
Garfield	1,536	718
Gilpin	433	146
Grand	419	166
Gunnison	881	557
Hinsdale	119	53
Huerfano	1,497	500
Jackson	91	258
Jefferson	269	862
Kiowa	436	435
Kit Carson	492	550
Lake	1,179	738
La Plata	1,321	902
Larimer	2,803	1,719

ABSTRACT OF VOTES CAST AT A GENERAL ELECTION HELD ON TUESDAY, NOVEMBER 3, A. D. 1914, FOR AMENDMENTS. YES AND NO.—Continued.

7. FOR BETTER ROADS.—Continued.

COUNTIES.	Yes.	No.
Las Animas	2,954	1,724
Lincoln	918	315
Logan	1,367	645
Mesa	2,417	1,934
Mineral	254	26
Moffat	358	156
Montezuma	721	319
Montrose	1,894	578
Morgan	1,421	622
Otero	2,455	1,328
Ouray	681	210
Park	473	141
Phillips	233	353
Pitkin	676	143
Prowers	849	813
Pueblo	8,687	2,767
Río Blanco	461	156
Río Grande	899	355
Routt	1,354	288
Saguache	740	227
San Juan	418	104
San Miguel	774	280
Sedgwick	291	184
Summit	299	228
Teller	2,285	516
Washington	452	648
Weld	3,206	4,332
Yuma	402	1,734
	117,146	54,844

ABSTRACT OF VOTES CAST AT A GENERAL ELECTION HELD ON
TUESDAY, NOVEMBER 3, A. D. 1914, FOR AMENDMENTS. YES AND
NO.—Continued.

8. PROPOSED AMENDMENT TO ARTICLE XV OF THE CONSTITUTION,
MAKING NEWSPAPERS PUBLIC UTILITIES.

COUNTIES.	Yes.	No.
Adams	347	701
Alamosa	312	417
Arapahoe	552	1,058
Archuleta	122	204
Baca	181	245
Bent	163	549
Boulder	1,102	4,206
Chaffee	309	976
Cheyenne	136	279
Clear Creek	281	427
Conejos	140	346
Costella	85	109
Crowley	175	458
Custer	62	200
Delta	408	1,831
Denver	12,782	27,212
Dolores	37	51
Douglas	113	458
Eagle	190	389
Elbert	202	453
El Paso	1,699	6,713
Fremont	521	2,536
Garfield	417	1,188
Gilpin	115	284
Grand	138	211
Gunnison	207	775
Hinsdale	21	100
Huerfano	317	706
Jackson	57	152
Jefferson	668	1,829
Kiowa	132	470
Kit Carson	232	543
Lake	548	863
La Plata	543	1,030

ABSTRACT OF VOTES CAST AT A GENERAL ELECTION HELD ON
TUESDAY, NOVEMBER 3, A. D. 1914, FOR AMENDMENTS, YES AND
NO.—Continued.

8. PROPOSED AMENDMENT TO ARTICLE XV OF THE CONSTITUTION,
MAKING NEWSPAPERS PUBLIC UTILITIES.—Continued.

COUNTIES.	Yes.	No.
Larimer	710	2,456
Las Animas	961	2,560
Lincoln	268	420
Logan	519	767
Mesa	755	2,604
Mineral	70	122
Moffat	128	221
Montezuma	230	537
Montrose	492	1,319
Morgan	414	1,094
Otero	716	2,079
Ouray	196	477
Park	110	233
Phillips	122	300
Pitkin	254	357
Prowers	334	976
Pueblo	1,893	6,075
rio Blanco	115	329
Rio Grande	260	652
Routt	394	606
Saguache	229	420
San Juan	108	182
San Miguel	222	584
Sedgwick	105	219
Summit	93	275
Teller	960	1,040
Washington	258	479
Weld	1,276	4,938
Yuma	246	1,136
	<hr/>	<hr/>
	35,752	91,426

35752
55,674

ABSTRACT OF VOTES CAST AT A GENERAL ELECTION HELD ON
TUESDAY, NOVEMBER 3, A. D. 1914, FOR AMENDMENTS. YES AND
NO.—Continued.

9. SECTIONS 36 AND 37, SENATE BILL No. 1, LAWS 1913, PUBLIC
UTILITIES COMMISSION.

COUNTIES.	Yes.	No.
Adams	327	485
Alamosa	237	278
Arapahoe	617	577
Archuleta	80	153
Baca	104	206
Bent	142	493
Boulder	1,400	3,110
Chaffee	285	777
Cheyenne	153	170
Clear Creek	246	302
Conejos	90	276
Costella	68	56
Crowley	180	382
Custer	27	187
Delta	634	1,100
Denver	16,361	16,748
Dolores	30	28
Douglas	108	348
Eagle	151	269
Elbert	160	316
El Paso	2,444	5,210
Fremont	537	2,166
Garfield	451	825
Gilpin	135	208
Grand	118	139
Gunnison	245	566
Hinsdale	27	81
Huerfano	292	643
Jackson	50	103
Jefferson	716	1,203
Kiowa	63	436
Kit Carson	149	460
Lake	359	692
La Plata	464	888

ABSTRACT OF VOTES CAST AT A GENERAL ELECTION HELD ON TUESDAY, NOVEMBER 3, A. D. 1914, FOR AMENDMENTS. YES AND NO.—Continued.

9. SECTIONS 36 AND 37, SENATE BILL No. 1, LAWS 1913, PUBLIC UTILITIES COMMISSION.—Continued.

COUNTIES.	Yes.	No.
Larimer	799	1,943
Las Animas	1,091	1,924
Lincoln	213	354
Logan	438	476
Mesa	1,153	1,410
Mineral	77	67
Moffat	85	215
Montezuma	211	393
Montrose	849	705
Morgan	396	847
Otero	889	1,598
Ouray	173	327
Park	124	141
Phillips	104	242
Pitkin	179	291
Prowers	246	760
Pueblo	1,552	5,667
Rio Blanco	74	246
Rio Grande	291	417
Routt	308	434
Saguache	214	271
San Juan	99	121
San Miguel	249	358
Sedgwick	81	148
Summit	89	222
Teller	670	732
Washington	160	395
Weld	1,221	3,669
Yuma	218	928
	<hr/>	<hr/>
	39,703	65,182

ABSTRACT OF VOTES CAST

ABSTRACT OF VOTES CAST AT A GENERAL ELECTION HELD ON
TUESDAY, NOVEMBER 3, A. D. 1914, FOR AMENDMENTS. YES AND
NO.—Continued.

10. HOUSE BILL No. 135, LAWS 1913. COMMISSION MERCHANTS.

COUNTIES.	Yes.	No.
Adams	376	510
Alamosa	235	291
Arapahoe	655	619
Archuleta	93	126
Baca	101	194
Bent	178	466
Boulder	1,355	3,131
Chaffee	320	816
Cheyenne	148	160
Clear Creek	217	320
Conejos	87	257
Costilla	72	58
Costilla	212	354
Crowley	28	178
Custer	1,271	922
Delta	14,100	19,240
Denver	21	35
Dolores	145	321
Douglas	214	246
Eagle	164	288
Elbert	1,586	5,914
El Paso	687	2,083
Fremont	896	617
Garfield	135	190
Gilpin	92	142
Grand	309	535
Gunnison	40	73
Hinsdale	300	673
Huerfano	81	58
Jackson	799	1,337
Jefferson	90	420
Kiowa	138	445
Kit Carson	422	717
Lake	425	869
La Plata	686	2,042
Larimer		

ABSTRACT OF VOTES CAST AT A GENERAL ELECTION HELD ON TUESDAY, NOVEMBER 3, A. D. 1914, FOR AMENDMENTS. YES AND NO.—Continued.

10. HOUSE BILL No. 135, LAWS 1913. COMMISSION MERCHANTS.—Continued.

COUNTIES.	Yes.	No.
Las Animas	1,015	1,964
Lincoln	244	322
Logan	466	457
Mesa	1,565	1,277
Mineral	74	61
Moffat	99	202
Montezuma	312	391
Montrose	885	665
Morgan	396	824
Otero	1,091	1,420
Ouray	175	333
Park	114	138
Phillips	115	225
Pitkin	156	308
Prowers	303	731
Pueblo	1,769	5,835
Rio Blanco	70	239
Rio Grande	280	406
Routt	380	394
Saguache	205	263
San Juan	118	108
San Miguel	219	374
Sedgwick	96	145
Summit	137	167
Teller	621	751
Washington	151	402
Weld	1,498	3,490
Yuma	216	915
	<hr/>	<hr/>
	39,448	67,454

ABSTRACT OF VOTES CAST AT A GENERAL ELECTION HELD ON
TUESDAY, NOVEMBER 3, A. D. 1914, FOR AMENDMENTS. YES AND
NO.—Continued.

11. SENATE BILL No. 69, LAWS 1913. RELIEVING EMPLOYEES AND
WORKMEN FROM ASSUMING RISK OF INJURY OR DEATH.

COUNTIES.	Yes.	No.
Adams	581	445
Alamosa	459	220
Arapahoe	1,094	486
Archuleta	158	134
Baca	204	184
Bent	260	456
Boulder	2,304	2,996
Chaffee	1,035	637
Cheyenne	238	132
Clear Creek	384	290
Conejos	160	248
Costilla	119	47
Crowley	266	345
Custer	132	179
Delta	999	1,028
Denver	22,052	16,654
Dolores	67	26
Douglas	243	312
Eagle	349	232
Elbert	374	279
El Paso	4,266	4,481
Fremont	1,501	1,965
Garfield	1,019	706
Gilpin	233	176
Grand	164	153
Gunnison	615	567
Hinsdale	55	72
Huerfano	1,093	709
Jackson	130	59
Jefferson	1,411	1,100
Kiowa	209	403
Kit Carson	326	403
Lake	1,071	581
La Plata	832	772

ABSTRACT OF VOTES CAST AT A GENERAL ELECTION HELD ON TUESDAY, NOVEMBER 3, A. D. 1914, FOR AMENDMENTS. YES AND NO.—Continued.

11. SENATE BILL No. 69, LAWS 1913. RELIEVING EMPLOYES AND WORKMEN FROM ASSUMING RISK OF INJURY OR DEATH.—Continued.

COUNTIES.	Yes.	No.
Larimer	1,220	1,784
Las Animas	2,352	1,900
Lincoln	448	295
Logan	837	410
Mesa	2,263	1,080
Mineral	122	65
Moffat	163	205
Montezuma	352	350
Montrose	1,160	641
Morgan	675	776
Otero	1,222	1,542
Ouray	358	297
Park	196	141
Phillips	158	227
Pitkin	352	265
Prowers	539	669
Pueblo	4,906	4,935
Rio Blanco	166	215
Rio Grande	438	384
Routt	690	369
Saguache	340	237
San Juan	235	99
San Miguel	435	367
Sedgwick	133	140
Summit	315	158
Teller	1,427	644
Washington	361	452
Weld	2,124	3,432
Yuma	616	742
	69,006	60,298

ABSTRACT OF VOTES CAST AT A GENERAL ELECTION HELD ON
TUESDAY, NOVEMBER 3, A. D. 1914, FOR AMENDMENTS. YES AND
NO.—Continued.

12. SENATE BILL No. 214. LAWS 1913. APPOINTMENT OF DEPUTY
SHERIFFS, CONSTABLES AND OTHER PEACE OFFICERS.

COUNTIES.	Yes.	No.
Adams	380	495
Alamosa	333	275
Arapahoe	706	598
Archuleta	115	134
Baca	143	206
Bent	167	466
Boulder	1,656	3,179
Chaffee	757	717
Cheyenne	201	168
Clear Creek	210	330
Conejos	108	264
Costilla	82	67
Crowley	151	384
Custer	66	178
Delta	583	1,236
Denver	16,498	18,071
Dolores	64	38
Douglas	145	381
Eagle	241	261
Elbert	217	312
El Paso	2,867	5,157
Fremont	1,106	2,171
Garfield	724	787
Gilpin	134	198
Grand	116	149
Gunnison	467	591
Hinsdale	35	79
Huerfano	1,098	750
Jackson	65	102
Jefferson	952	1,190
Kiowa	136	438
Kit Carson	206	437
Lake	601	782
La Plata	534	805

ABSTRACT OF VOTES CAST AT A GENERAL ELECTION HELD ON TUESDAY, NOVEMBER 3, A. D. 1914, FOR AMENDMENTS. YES AND NO.—Continued.

12. SENATE BILL No. 214, LAWS 1913. APPOINTMENT OF DEPUTY SHERIFFS, CONSTABLES AND OTHER PEACE OFFICERS.—Continued.

COUNTIES.	Yes.	No.
Larimer	753	1,984
Las Animas	2,186	2,084
Lincoln	287	340
Logan	537	490
Mesa	1,740	1,208
Mineral	89	66
Moffat	96	219
Montezuma	223	408
Montrose	853	781
Morgan	473	826
Otero	850	1,663
Ouray	217	342
Park	110	170
Phillips	123	232
Pitkin	139	238
Prowers	359	770
Pueblo	3,227	5,696
Rio Blanco	97	243
Rio Grande	284	482
Routt	492	435
Saguache	265	265
San Juan	187	115
San Miguel	260	433
Sedgwick	90	158
Summit	165	186
Teller	1,044	771
Washington	229	398
Weld	1,433	3,629
Yuma	444	858
	49,116	66,836

ABSTRACT OF VOTES CAST AT A GENERAL ELECTION HELD ON
TUESDAY, NOVEMBER 3, A. D. 1914, FOR AMENDMENTS. YES AND
NO.—Continued.

13. SECTIONS 35, 36 AND 37. SENATE BILL No. 1, LAWS 1913. PUBLIC
UTILITIES COMMISSION.

COUNTIES.	Yes.	No.
Adams	292	470
Alamosa	220	248
Arapahoe	616	543
Archuleta	72	141
Baca	85	197
Bent	117	483
Boulder	1,334	3,084
Chaffee	294	794
Cheyenne	146	159
Clear Creek	238	300
Conejos	83	266
Costilla	61	58
Crowley	115	362
Custer	39	171
Delta	559	1,129
Denver	15,443	16,320
Dolores	29	30
Douglas	112	327
Eagle	133	263
Elbert	141	306
El Paso	2,377	5,156
Fremont	549	2,141
Garfield	377	773
Gilpin	119	199
Grand	113	139
Gunnison	237	555
Hinsdale	25	80
Huerfano	292	646
Jackson	40	102
Jefferson	694	1,209
Kiowa	56	442
Kit Carson	130	463
Lake	368	679
La Plata	429	852

ABSTRACT OF VOTES CAST AT A GENERAL ELECTION HELD ON
TUESDAY, NOVEMBER 3, A. D. 1914, FOR AMENDMENTS. YES, AND
NO.—Continued.

13. SECTIONS 35, 36 AND 37, SENATE BILL No. 1, LAWS 1913. PUBLIC
UTILITIES COMMISSION.—Continued.

COUNTIES.	Yes.	No.
Larimer	767	1,850
Las Animas	1,059	1,847
Lincoln	195	343
Logan	384	460
Mesa	1,135	1,247
Mineral	81	57
Moffat	76	214
Montezuma	186	387
Montrose	791	633
Morgan	367	846
Otero	751	1,585
Ouray	150	321
Park	96	156
Phillips	94	234
Pitkin	163	274
Prowers	213	757
Pueblo	1,807	5,556
Rio Blanco	62	239
Rio Grande	289	432
Routt	272	408
Saguache	204	259
San Juan	104	112
San Miguel	234	366
Sedgwick	61	146
Summit	92	206
Teller	591	671
Washington	163	401
Weld	1,160	3,562
Yuma	181	947
	<hr/>	<hr/>
	37,633	63,603

Ref. by Legislature

ABSTRACT OF VOTES CAST

ABSTRACT OF VOTES CAST AT A GENERAL ELECTION HELD ON TUESDAY, NOVEMBER 3, A. D. 1914, FOR AMENDMENTS. YES AND NO.—Continued.

14. AN AMENDMENT CONCERNING CITY OR TOWN INDEBTEDNESS.

COUNTIES.	Yes.	No.
Adams	343	451
Alamosa	249	292
Arapahoe	633	560
Archuleta	85	128
Baca	115	188
Bent	163	484
Boulder	1,417	2,972
Chaffee	336	772
Cheyenne	127	158
Clear Creek	274	295
Conejos	112	251
Costilla	72	53
Crowley	132	356
Custer	42	181
Delta	378	1,362
Denver	16,784	17,070
Dolores	23	28
Douglas	113	286
Eagle	151	250
Elbert	175	277
El Paso	2,024	5,545
Fremont	488	2,077
Garfield	446	815
Gilpin	141	191
Grand	118	114
Gunnison	217	554
Hinsdale	32	71
Huerfano	187	344
Jackson	103	61
Jefferson	678	1,078
Kiowa	77	427
Kit Carson	156	451
Lake	327	733
La Plata	395	893
Larimer	1,004	1,902

ABSTRACT OF VOTES CAST AT A GENERAL ELECTION HELD ON
TUESDAY, NOVEMBER 3, A. D. 1914, FOR AMENDMENTS. YES AND
NO.—Continued.

14. AN AMENDMENT CONCERNING CITY OR TOWN INDEBTEDNESS.—
Continued.

COUNTIES.	Yes.	No.
Las Animas	952	1,801
Lincoln	143	231
Logan	446	447
Mesa	767	1,718
Mineral	66	60
Moffat	91	202
Montezuma	159	402
Montrose	616	874
Morgan	342	904
Otero	687	1,680
Ouray	191	308
Park	88	153
Phillips	109	233
Pitkin	172	215
Prowers	273	736
Pueblo	1,624	5,820
Rio Blanco	110	221
Rio Grande	250	459
Routt	351	438
Saguache	225	235
San Juan	99	127
San Miguel	182	432
Sedgwick	83	153
Summit	101	219
Teller	750	660
Washington	191	368
Weld	1,208	3,529
Yuma	196	911
	38,589	65,206

ABSTRACT OF VOTES CAST AT A GENERAL ELECTION HELD ON TUESDAY, NOVEMBER 3, A. D. 1914, FOR AMENDMENTS. YES AND NO.—Continued.

15. AN AMENDMENT CONCERNING BOARDS OF EQUALIZATION TO PROPERLY ADJUST BURDENS OF TAXATION.

COUNTIES.	Yes.	No.
Adams	504	397
Alamosa	368	251
Arapahoe	880	462
Archuleta	141	111
Baca	199	152
Bent	265	472
Boulder	2,396	2,351
Chaffee	488	682
Cheyenne	217	137
Clear Creek	446	251
Conejos	156	229
Costilla	171	49
Crowley	217	334
Custer	82	172
Delta	890	1,090
Denver	20,608	13,822
Dolores	41	25
Douglas	206	259
Eagle	226	224
Elbert	302	264
El Paso	3,360	4,534
Fremont	904	1,828
Garfield	716	744
Gilpin	169	190
Grand	251	114
Gunnison	361	485
Hinsdale	48	65
Huerfano	305	319
Jackson	159	51
Jefferson	1,075	906
Kiowa	243	352
Kit Carson	327	377
Lake	409	676
La Plata	565	845

Re by Legislature

ABSTRACT OF VOTES CAST AT A GENERAL ELECTION HELD ON TUESDAY, NOVEMBER 3, A. D. 1914, FOR AMENDMENTS. YES AND NO.—Continued.

15. AN AMENDMENT CONCERNING BOARDS OF EQUALIZATION TO PROPERLY ADJUST THE BURDENS OF TAXATION.—Continued.

COUNTIES.	Yes.	No.
Larimer	1,671	1,482
Las Animas	1,094	1,831
Lincoln	271	186
Logan	626	374
Mesa	1,843	1,000
Mineral	93	51
Moffat	152	179
Montezuma	340	330
Montrose	1,143	558
Morgan	638	758
Otero	1,092	1,484
Ouray	256	283
Park	137	152
Phillips	165	208
Pitkin	216	214
Prowers	517	652
Pueblo	2,086	5,428
Rio Blanco	202	198
Rio Grande	440	367
Routt	585	350
Saguache	298	260
San Juan	137	105
San Miguel	324	358
Sedgwick	138	143
Summit	162	180
Teller	1,090	519
Washington	310	335
Weld	1,843	3,284
Yuma	423	786
	55,987	55,275

Revised Legislature

ABSTRACT OF VOTES CAST

ABSTRACT OF VOTES CAST AT A GENERAL ELECTION HELD ON TUESDAY, NOVEMBER 3, A. D. 1914, FOR AMENDMENTS, YES AND NO.—Continued.

16. AN AMENDMENT TO SECTION 2 OF ARTICLE XIX. OF THE CONSTITUTION, AND PERMITTING CHANGE IN THE MANNER AND COST OF PUBLISHING CONSTITUTIONAL AMENDMENTS AND INITIATED AND REFERRED MEASURES.

COUNTIES.	Yes.	No.
Adams	370	428
Alamosa	299	239
Arapahoe	733	456
Archuleta	87	130
Baca	123	170
Bent	170	465
Boulder	2,483	2,335
Chaffee	381	725
Cheyenne	137	138
Clear Creek	247	270
Conejos	113	231
Costilla	91	45
Crowley	155	352
Custer	63	173
Delta	802	1,021
Denver	19,135	14,203
Dolores	37	33
Douglas	172	268
Eagle	189	220
Elbert	193	334
El Paso	3,168	4,424
Fremont	693	1,902
Garfield	578	737
Gilpin	149	188
Grand	132	130
Gunnison	254	497
Hinsdale	39	71
Huerfano	304	319
Jackson	67	81
Jefferson	896	920
Kiowa	122	411
Kit Carson	223	391
Lake	441	626

ABSTRACT OF VOTES CAST AT A GENERAL ELECTION HELD ON TUESDAY, NOVEMBER 3, A. D. 1914, FOR AMENDMENTS. YES AND NO.—Continued.

16. AN AMENDMENT TO SECTION 2 OF ARTICLE XIX OF THE CONSTITUTION, AND PERMITTING CHANGE IN THE MANNER AND COST OF PUBLISHING CONSTITUTIONAL AMENDMENTS AND INITIATED AND REFERRED MEASURES.—Continued.

COUNTIES.	Yes.	No.
La Plata	523	796
Larimer	986	1,724
Las Animas	1,039	1,681
Lincoln	214	194
Logan	461	403
Mesa	1,804	1,013
Mineral	93	46
Moffat	123	178
Montezuma	238	374
Montrose	923	607
Morgan	497	787
Otero	1,027	1,465
Ouray	185	295
Park	99	135
Phillips	116	221
Pitkin	224	180
Prowers	514	652
Pueblo	1,685	5,588
Rio Blanco	108	245
Rio Grande	403	357
Routt	397	388
Saguache	193	267
San Juan	116	118
San Miguel	265	364
Sedgwick	96	134
Summit	147	179
Teller	878	526
Washington	203	342
Weld	1,489	3,254
Yuma	209	813
	<hr/>	<hr/>
	48,301	56,259

