

STATE OF COLORADO

Abstract of Votes Cast

AT THE

PRIMARY ELECTION

Held on the Tenth Day of September, A. D. 1940

AND AT THE

GENERAL ELECTION

Held on the Fifth Day of November, A. D. 1940

FOR

Presidential Electors, Congressmen, State Legislative
and District Officers

AND

Proposed Constitutional Amendments, Initiated
and Referred Bills

ALSO

Directory of the United States, State Legislative,
District and County Officers



COMPILED FROM OFFICIAL RETURNS
BY

WALTER F. MORRISON
Secretary of State

1940

PRICE, 50 CENTS

ABSTRACT OF VOTES CAST AT A GENERAL ELECTION HELD ON TUESDAY, NOVEMBER 1, 1910

	DEMOCRATIC					REPUBLICAN					PROHIBITION					
	James A. Brownlow	Delavan W. Gee	J. C. Jarrett	A. L. Litel	Rosa M. Martin	Irene C. Phillips	Eileen Ewing Archibold	James L. Bradley	J. W. Preston	Claude H. Rees	J. Luis Rivera	A. B. Trott	Ethel Harris	R. E. Manyon	J. M. Messer	Perry C. Norton
Adams	4,683	4,665	4,674	4,670	4,669	4,676	4,771	4,767	4,778	4,766	4,766	4,775	25	25	23	23
Alamosa	2,497	2,467	2,467	2,476	2,473	2,462	2,231	2,243	2,236	2,236	2,236	2,236	13	13	13	13
Arapahoe	7,574	7,555	7,571	7,587	7,552	7,573	7,955	7,988	8,001	7,987	7,987	7,986	33	32	34	34
Archuleta	746	745	744	745	745	742	869	863	863	868	869	866	15	15	15	15
Baca	1,156	1,145	1,167	1,137	1,147	1,154	1,543	1,557	1,543	1,543	1,546	1,539	8	8	8	8
Bent	1,754	1,786	1,759	1,746	1,750	1,778	1,873	1,899	1,874	1,870	1,870	1,906	7	7	7	7
Boulder	9,050	9,036	9,039	9,039	9,040	9,029	10,523	10,525	10,520	10,521	10,525	10,519	70	70	70	70
Chaffee	2,157	2,154	2,153	2,153	2,149	2,051	1,927	1,933	1,930	1,929	1,929	1,915	12	14	12	12
Cheyenne	748	746	758	742	746	748	911	915	910	908	910	911	3	3	3	3
Clear Creek	1,283	1,280	1,281	1,283	1,282	1,280	1,017	1,018	1,016	1,017	1,015	1,015	1	1	1	1
Conejos	2,480	2,481	2,481	2,482	2,479	2,475	2,027	2,028	2,028	2,028	2,034	2,020	4	4	4	4
Costilla	1,666	1,666	1,698	1,645	1,671	1,630	1,126	1,121	1,109	1,112	1,125	1,104	9	7	7	7
Crowley	835	837	850	844	843	837	1,414	1,419	1,419	1,428	1,413	1,417	7	6	6	6
Custer	489	489	495	488	490	487	667	685	671	668	681	668	9	7	6	6
Delta	2,940	2,950	3,044	2,935	3,011	2,771	4,151	4,175	4,261	4,159	4,242	3,980	42	40	45	40
Denver	90,994	90,805	90,933	91,069	90,864	90,695	81,109	81,328	81,281	81,338	81,182	81,351	359	325	322	320
Dolores	377	370	379	362	370	373	448	478	453	445	457	465	7	9	8	9
Douglas	802	802	801	802	801	802	1,295	1,298	1,297	1,297	1,297	1,288	1	1	1	1
Eagle	1,480	1,465	1,474	1,464	1,466	1,466	1,064	1,077	1,062	1,059	1,058	1,062	1	1	1	1
Elbert	931	935	934	928	931	934	1,745	1,766	1,750	1,739	1,743	1,742	3	3	3	3
El Paso	13,281	13,270	13,320	13,232	13,265	13,231	16,702	16,766	16,704	16,688	16,722	16,671	131	128	126	127
Fremont	4,197	4,185	4,186	4,184	4,185	4,172	5,148	5,150	5,144	5,142	5,142	5,107	29	27	28	27
Garfield	2,087	2,106	2,141	2,091	2,100	2,112	2,897	2,897	2,897	2,895	2,895	2,868	14	14	13	12
Gilpin	433	432	431	432	431	432	411	412	412	412	412	411	2	2	2	2
Grand	858	855	863	856	860	856	1,074	1,074	1,075	1,075	1,075	1,073	3	3	3	3
Gunnison	1,760	1,758	1,771	1,758	1,758	1,710	1,546	1,556	1,571	1,551	1,552	1,508	1	1	1	1
Hinsdale	103	103	103	103	103	103	150	150	150	150	150	150	7	7	7	7
Huerfano	4,000	3,960	3,974	3,974	3,979	3,965	2,798	2,738	2,736	2,737	2,748	2,735	1	1	1	1
Jackson	353	356	357	354	354	354	8,767	8,780	8,908	8,780	8,865	8,714	24	25	26	23
Jefferson	7,535	7,538	7,745	7,578	7,718	7,471	985	986	988	984	987	984	6	6	6	6
Kiowa	599	595	598	593	595	596	2,485	2,481	2,480	2,483	2,482	2,482	12	12	12	12
Kit Carson	1,103	1,100	1,100	1,100	1,102	1,100	1,347	1,403	1,343	1,375	1,357	1,331	2	2	2	2
Lake	2,066	2,223	2,063	2,143	2,094	2,060	3,871	3,871	3,868	3,867	3,869	3,858	14	13	12	12
La Plata	2,843	2,833	2,835	2,834	2,835	2,834	10,706	10,720	10,708	10,711	10,697	10,690	77	78	80	78
Larimer	6,413	6,399	6,402	6,397	6,393	6,381	4,855	4,859	4,816	4,814	4,802	4,686	23	18	14	14
Las Animas	8,795	8,758	8,766	8,752	8,749	8,753	1,794	1,780	1,787	1,776	1,780	1,777	14	14	14	14
Lincoln	1,185	1,177	1,185	1,178	1,182	1,179	4,616	4,613	4,561	4,579	4,605	4,561	64	65	65	65
Logan	2,367	2,382	2,319	2,349	2,355	2,321	7,034	7,049	7,039	7,038	7,023	7,022	73	75	74	74
Mesa	786	771	784	786	786	786	230	229	232	229	229	228	1	1	0	0
Mineral	276	271	273	271	272	268	1,557	1,556	1,555	1,557	1,553	1,548	9	9	9	9
Moffat	1,056	1,055	1,056	1,052	1,051	1,051	2,310	2,313	2,310	2,311	2,309	2,308	2	2	2	2
Montezuma	1,576	1,574	1,573	1,573	1,573	1,571	3,755	3,744	3,735	3,730	3,731	3,728	31	30	29	32
Montrose	3,052	3,010	3,013	3,007	3,004	2,994	4,641	4,654	4,632	4,631	4,635	4,620	37	37	39	38
Morgan	2,541	2,530	2,527	2,518	2,529	2,517	5,425	5,459	5,508	5,423	5,483	5,416	41	42	39	38
Otero	4,474	4,486	4,567	4,469	4,503	4,464	591	589	580	579	582	582	2	2	2	2
Ouray	606	605	606	606	606	602	978	986	975	978	983	977	1	1	1	1
Park	857	862	869	856	857	857	1,342	1,168	1,161	1,146	1,169	1,142	28	28	29	28
Phillips	1,024	909	919	905	909	902	471	484	485	485	481	482	0	1	0	0
Pitkin	504	498	503	500	499	495	3,089	3,115	3,106	3,109	3,108	3,101	33	33	35	35
Prowers	2,311	2,308	2,309	2,307	2,311	2,308	14,166	14,185	14,198	14,190	14,172	14,178	69	69	70	71
Pueblo	18,302	18,779	18,805	18,790	18,782	18,781	1,006	1,021	1,010	1,007	1,014	1,004	4	4	4	5
Rio Blanco	530	523	530	525	526	523	3,066	3,075	3,086	3,072	3,074	3,059	30	29	31	29
Rio Grande	2,223	2,218	2,222	2,214	2,218	2,206	2,212	2,212	2,214	2,216	2,211	2,214	12	11	9	9
Routt	2,786	2,776	2,775	2,768	2,770	2,771	1,457	1,462	1,427	1,396	1,396	1,401	11	10	9	8
Saguache	1,130	1,126	1,142	1,130	1,126	1,131	453	452	452	451	451	452	1	0	0	0
San Juan	378	378	378	377	378	372	718	729	721	722	722	715	3	1	1	3
San Miguel	850	845	851	844	843	838	1,444	1,448	1,443	1,447	1,434	1,439	6	7	5	9
Sedgwick	964	956	959	959	960	959	482	479	478	477	478	475	3	4	3	3
Summit	543	541	540	540	540	535	1,261	1,268	1,283	1,255	1,264	1,271	4	4	4	4
Teller	2,035	2,037	2,034	2,027	2,040	2,075	1,425	1,425	1,425	1,371	1,392	1,353	11	11	12	11
Washington	1,399	1,434	1,403	1,399	1,425	1,394	16,136	16,129	16,149	16,150	16,118	16,915	111	110	107	107
Weld	10,723	10,602	10,653	10,649	10,627	10,638	3,518	3,517	3,517	3,505	3,515	3,511	21	20	22	18
Yuma	1,930	1,924	1,917	1,908	1,926	1,934										
TOTAL	265,364	264,898	265,554	264,893	265,002	263,771	279,022	279,576	279,337	278,948	279,086	277,888	1,597	1,551	1,535	1,529

AT A GENERAL ELECTION HELD ON TUESDAY, NOVEMBER 5TH, A. D. 1940, FOR PRESIDENTIAL ELECTORS

PROHIBITION		SOCIALIST		COMMUNIST	
A. B. Trott		William B. Butler		Byron Andrews	
4,775	25	33	30	4	Edna M. Coppuck
2,191	33	93	30	11	Frank Cordova
7,986	33	94	96	11	Helen L. Dietrich
866	33	21	19	11	Charles Rehmer
1,539	15	21	19	11	John Roddy
1,908	15	21	19	11	Adams
0,519	70	13	130	10	Alamosa
1,815	12	21	127	10	Arapahoe
911	12	21	21	10	Archuleta
1,015	11	13	21	10	Baca
2,020	11	13	21	10	Bent
1,104	14	13	21	10	Boulder
1,417	14	13	21	10	Chaffee
668	14	13	21	10	Cheyenne
3,980	40	44	50	10	Clear Creek
1,351	35	41	50	10	Conejos
465	32	41	50	10	Costilla
1,288	32	41	50	10	Crowley
1,062	32	41	50	10	Custer
1,742	32	41	50	10	Delta
6,671	131	91	86	168	Denver
5,107	29	11	26	2	Dolores
2,868	14	11	26	2	Douglas
411	11	11	10	2	Eagle
1,073	11	11	10	2	Elbert
1,508	11	11	10	2	El Paso
150	11	11	10	2	Fremont
2,735	11	11	10	2	Garfield
521	11	11	10	2	Gilpin
8,714	24	10	8	10	Grand
984	24	10	8	10	Gunnison
2,482	12	66	71	10	Hinsdale
1,331	12	17	17	10	Huerfano
3,858	10	17	17	10	Jackson
0,690	14	20	19	10	Jefferson
4,688	23	46	43	10	Kiowa
1,777	14	15	11	12	Kit Carson
4,561	64	16	8	12	Lake
7,022	73	17	17	12	La Plata
228	1	93	94	12	Larimer
1,948	1	2	0	13	Las Animas
2,308	1	6	7	13	Lincoln
3,728	31	15	16	13	Logan
4,620	37	57	56	13	Mesa
5,416	41	18	16	13	Mineral
582	2	22	21	11	Montezuma
977	2	2	2	11	Montrose
1,142	28	2	6	11	Morgan
482	1	34	35	11	Otero
3,101	33	9	9	11	Ouray
4,178	71	13	13	11	Park
1,004	4	33	33	11	Phillips
3,059	30	71	68	11	Pitkin
2,214	11	5	5	11	Prowers
1,401	11	31	31	15	Pueblo
452	0	10	10	15	Rio Blanco
715	1	10	10	15	Rio Grande
1,439	3	10	10	15	Routt
475	3	10	10	15	Saguache
1,271	4	10	10	15	San Juan
2,353	11	11	11	15	San Miguel
5,915	111	11	11	15	Sedgwick
3,511	21	107	97	15	Summit
		18	33	16	Teller
				2	Washington
				1	Weid
				3	Yuma
7,888	1,597	1,899	1,839	378	
	1,551		1,827	297	
	1,535		1,816	369	
	1,529		1,829	314	
	1,560		1,826	302	
	1,569			297	

	JUSTICE OF THE SUPREME COURT		GOVERNOR				LIEUTENANT GOVERNOR				SECRETARY OF STATE			AUDITOR OF STATE		
	Benjamin C. Hilliard—Dem.	George A. Luxford—Rep.	Ralph L. Carr—Rep.	George E. Saunders—Dem.	Laurence W. Coffman—Pro.	Carle Whitehead—Soc.	John J. Downey—Dem.	John C. Vivian—Rep.	Oliver L. Barnes—Pro.	Ira W. Holland—Soc.	Donald B. Latta—Dem.	Walter F. Morrison—Rep.	Fred D. Gaspard—Soc.	A. P. Ardourel—Dem.	Chas. M. Armstrong—Rep.	J. A. Kimber—Soc.
Adams	5,070	3,851	4,913	4,392	25	50	4,375	4,649	54	63	4,625	4,631	52	3,798	5,368	57
Alamosa	2,569	1,889	2,636	2,125	11	11	2,322	2,331	11	11	2,334	2,245	8	1,975	2,561	14
Arapahoe	6,492	6,492	6,022	7,408	33	135	7,341	7,383	135	135	7,216	7,970	164	6,359	8,874	104
Archuleta	568	617	886	613	1	0	711	711	3	1	608	750	2	466	873	6
Baca	1,297	1,266	1,563	1,275	1	1	1,633	1,372	20	20	1,243	1,409	16	1,139	1,516	22
Bent	1,899	1,673	1,989	1,783	1	1	1,743	1,895	13	13	1,779	1,928	20	1,589	2,101	23
Boulder	9,974	8,085	10,517	8,097	53	137	8,478	10,556	113	163	8,655	10,336	144	7,848	11,182	187
Chaffee	2,196	1,442	1,736	2,189	14	14	2,147	1,749	20	13	2,239	1,655	25	1,840	2,082	16
Cheyenne	791	772	850	835	1	1	724	852	20	13	707	882	8	698	932	10
Clear Creek	1,326	824	1,160	1,140	1	1	1,137	1,110	2	2	1,166	1,058	13	977	1,266	11
Conejos	1,977	1,907	2,413	2,002	10	10	1,493	2,119	2	2	1,781	2,161	28	1,544	2,366	13
Costilla	1,518	1,013	1,216	1,549	16	16	1,100	1,100	13	13	1,559	1,130	7	1,466	1,230	10
Crowley	998	1,149	1,448	903	1	1	943	1,252	13	13	880	1,277	7	829	1,363	4
Custer	510	604	730	458	3	3	463	669	9	9	484	663	6	415	746	5
Delta	3,536	3,502	4,118	3,286	23	39	3,209	3,816	70	54	3,235	3,839	99	2,587	4,450	45
Denver	105,674	60,900	90,162	80,246	335	990	82,495	85,310	522	1,084	85,669	82,260	909	75,430	92,552	938
Dolores	447	317	397	500	4	4	526	305	12	9	405	390	8	333	468	7
Douglas	963	1,054	1,349	783	1	1	1,781	1,250	2	15	804	1,215	11	662	1,372	12
Eagle	1,427	894	1,261	1,323	4	4	1,378	1,086	4	13	1,397	1,073	6	1,099	1,428	8
Elbert	1,194	1,367	1,652	1,054	6	6	1,367	1,594	4	13	936	1,556	7	795	1,816	8
El Paso	14,670	14,404	17,571	12,674	108	80	12,667	16,657	199	103	13,949	15,679	102	10,784	18,621	102
Fremont	4,420	4,288	5,278	3,965	20	26	4,001	5,016	51	30	4,338	4,786	32	3,658	5,437	35
Garfield	2,352	2,353	2,946	2,091	11	3	2,065	2,762	27	11	2,015	2,817	14	1,657	3,257	14
Gilpin	456	351	437	445	0	1	423	429	2	2	427	401	2	346	499	3
Grand	897	874	1,198	745	0	1	761	1,148	4	4	427	401	2	346	499	3
Gunnison	1,862	1,221	1,665	1,608	12	12	1,669	1,478	10	16	1,767	1,130	7	605	1,315	6
Hinsdale	109	137	159	98	0	0	97	159	0	1	1,763	1,490	19	1,479	1,759	9
Huerfano	3,727	2,493	3,088	3,977	16	1	3,841	2,855	19	12	1,077	1,500	0	81	177	1
Jackson	389	475	629	281	1	1	327	555	4	4	3,856	2,806	25	3,533	3,160	11
Jefferson	8,556	7,215	9,094	7,289	27	72	6,860	9,461	26	81	7,230	5,525	3	275	608	1
Kiowa	671	830	955	645	4	4	648	896	2	8	654	912	4	596	961	7
Kit Carson	1,210	2,156	2,232	1,397	15	9	1,189	2,234	23	13	1,130	2,274	17	1,025	2,382	17
Lake	2,216	1,167	1,643	1,988	7	7	2,040	1,451	23	23	2,208	1,350	11	1,655	1,892	8
La Plata	2,845	2,940	3,789	2,819	3	3	2,991	3,196	20	12	2,795	3,453	15	2,336	3,943	18
Larimer	6,918	8,131	11,553	5,823	67	56	6,047	10,689	79	20	6,202	10,665	56	5,456	11,365	80
Las Animas	8,059	4,139	5,382	7,767	30	27	7,861	4,870	52	67	7,695	4,966	46	6,748	5,888	33
Lincoln	1,330	1,536	1,757	1,251	13	4	1,185	1,685	28	5	1,190	1,674	6	1,037	1,853	3
Logan	3,401	3,864	4,522	3,261	27	15	2,955	4,474	48	16	3,199	4,296	10	2,468	5,001	21
Mesa	7,757	5,458	6,492	7,617	68	67	7,186	6,236	114	99	7,368	6,782	119	6,501	7,659	125
Mineral	282	185	311	208	0	0	241	252	0	1	279	214	0	213	285	1
Moffat	1,111	1,226	1,500	1,167	4	3	1,092	1,469	14	12	1,064	1,473	15	855	1,677	17
Montezuma	1,668	1,604	2,136	1,606	8	11	2,272	1,469	32	32	1,598	1,969	14	1,378	2,227	15
Montrose	3,212	2,971	3,676	3,047	16	21	2,918	3,289	30	40	2,999	3,348	42	2,473	3,947	41
Morgan	3,147	3,145	4,418	2,729	22	13	2,598	4,135	47	29	2,490	4,462	33	2,179	4,756	23
Otero	4,708	4,594	5,845	4,034	39	16	4,389	5,352	69	15	4,421	5,335	20	3,756	6,013	28
Ouray	631	400	640	551	1	1	587	561	3	3	619	577	3	443	728	5
Park	977	829	1,027	851	1	1	859	978	3	3	874	942	3	670	1,185	3
Phillips	1,061	1,123	1,339	1,055	21	33	963	1,260	30	38	980	1,276	37	805	1,478	34
Pitkin	561	302	513	480	1	1	515	405	4	4	518	387	5	391	527	5
Prowers	2,514	2,617	3,000	2,385	27	13	2,338	2,919	43	13	2,311	2,969	14	2,136	3,151	17
Pueblo	18,045	13,002	17,351	14,993	75	48	16,617	15,350	114	57	17,550	15,088	84	14,803	17,761	81
Rio Blanco	547	869	1,028	529	7	2	515	957	5	12	507	963	5	428	1,075	6
Rio Grande	2,343	2,428	3,391	1,726	25	25	1,989	2,972	43	39	1,966	2,997	14	1,673	3,251	19
Routt	2,812	1,727	2,431	2,625	15	15	2,597	2,230	32	32	2,685	2,119	24	2,237	2,598	24
Saguache	1,141	1,274	1,517	1,180	10	10	1,038	1,394	18	11	1,027	1,420	8	900	1,514	6
San Juan	446	351	479	362	2	2	418	395	1	3	409	400	3	328	482	4
San Miguel	948	542	700	898	5	5	910	613	8	6	875	646	8	678	832	9
Sedgwick	961	1,310	1,394	977	5	7	962	1,361	13	7	955	1,378	6	790	1,541	4
Summit	603	366	549	476	4	4	513	469	7	5	514	469	4	439	559	22
Teller	2,214	1,008	1,743	1,684	3	19	1,842	1,419	10	23	2,648	752	26	1,559	1,716	23
Washington	1,519	1,995	2,147	1,694	11	7	1,527	2,147	22	12	1,468	2,228	6	1,296	2,401	9
Weld	12,204	13,719	16,748	10,130	113	101	10,302	15,644	168	113	7,520	19,082	89	8,765	17,692	109
Yuma	2,234	2,877	3,375	2,203	14	22	2,057	3,194	41	30	1,900	3,283	30	1,727	3,505	88
TOTAL	289,958	224,514	296,671	245,292	1,462	2,211	248,897	278,107	2,493	2,643	253,211	277,518	2,559	219,483	311,091	2,632

AUDITOR OF STATE		FOR STATE TREASURER		FOR ATTORNEY GENERAL		FOR SUPERINTENDENT OF PUBLIC INSTRUCTION		FOR REGENTS OF THE UNIVERSITY OF COLORADO											
A. P. Ardourel—Dem.	Chas. M. Armstrong—Rep.	J. A. Kimber—Soc.	Henry N. Seyler—Pro.	Homer F. Bedford—Dem.	Albert F. Cruse—Rep.	Charles R. Axelson—Soc.	Joseph E. Overholt—Pro.	James E. Griffith—Dem.	Gall L. Ireland—Rep.	Lucile Horton Latting—Rep.	Inez Johnson Lewis—Dem.	Alice Boyd Randall—Soc.	Nellie A. Reed—Pro.	Frank D. Allen—Rep.	John Andrew—Rep.	M. D. Currigan—Dem.	Clifford W. Mills—Dem.	Jennie A. Gaspard—Soc.	Julius F. Sampson—Soc.
3,798	5	57	27	5,045	4,102	44	32	4,583	4,399	4,007	4,772	42	48	4,329	3,924	4,119	3,921	67	55
1,975	2,368	14	11	1,909	1,909	8	10	2,392	2,073	1,901	2,588	15	24	2,107	1,957	2,209	2,079	16	16
6,359	8,674	104	59	8,394	6,868	110	49	7,524	7,601	6,700	8,235	129	95	7,147	6,712	7,135	6,645	147	111
466	878	6	5	640	693	4	4	583	738	633	691	2	7	1,695	626	535	503	2	2
1,139	1,516	22	23	1,365	1,312	13	21	1,283	1,314	1,311	1,297	26	31	1,283	1,164	1,046	1,976	18	18
1,589	2,101	12	14	1,980	1,713	12	17	1,833	1,854	1,768	1,868	15	20	1,817	1,645	1,586	1,507	10	10
7,848	11,182	187	93	10,153	8,906	145	73	8,945	9,906	8,574	10,051	187	131	9,492	11,013	7,240	7,907	167	167
1,840	2,082	16	12	2,464	1,478	15	12	2,244	1,655	1,455	2,416	18	23	1,570	1,478	2,145	1,958	35	35
698	932	10	6	764	863	6	8	771	823	757	837	6	11	814	722	652	605	7	7
977	1,266	11	1	1,337	913	11	11	1,193	997	911	1,273	14	8	964	908	1,119	1,076	10	10
1,544	2,366	13	12	1,997	1,930	11	19	1,813	2,036	1,952	1,887	14	23	1,978	1,827	1,538	1,344	8	8
1,466	1,230	10	7	1,611	1,054	15	15	1,582	1,089	1,046	1,594	11	15	1,054	896	1,459	1,284	10	10
820	1,363	4	7	1,060	1,132	7	7	965	1,172	1,132	1,018	14	21	1,190	1,123	806	754	12	12
415	746	5	1	600	546	6	5	535	613	618	516	4	4	604	553	2,412	2,380	4	4
2,587	4,450	45	43	3,686	3,375	48	60	3,324	3,667	3,456	3,557	55	85	3,724	3,378	2,787	2,640	61	61
75,430	92,552	938	445	92,725	75,015	882	325	88,343	78,498	67,970	96,661	954	649	72,295	70,564	88,828	86,421	959	959
333	468	7	11	476	321	7	12	447	343	323	473	11	13	339	298	338	312	10	10
662	1,372	12	11	921	1,121	10	6	824	1,169	1,082	1,210	7	10	1,181	1,106	708	662	8	8
1,099	1,428	8	4	1,543	977	6	4	1,445	1,040	949	1,530	13	8	1,048	928	1,281	1,185	18	18
795	1,816	8	5	1,103	1,513	5	5	1,011	1,532	1,451	1,121	8	10	1,561	1,456	854	792	6	6
10,784	18,621	102	158	14,995	14,501	94	145	13,684	15,496	13,974	15,045	129	290	14,995	14,840	12,353	12,995	138	138
3,658	5,437	35	41	4,408	4,717	33	39	4,412	4,643	4,684	4,258	37	84	4,682	4,484	3,853	3,697	50	50
1,657	3,257	14	16	2,508	2,360	17	22	2,217	2,647	2,381	2,383	28	32	2,612	2,396	1,909	1,783	18	18
346	499	3	0	483	357	1	1	409	413	337	480	6	1	348	327	370	322	1	1
605	1,315	6	5	869	1,049	1	8	806	1,072	965	912	11	7	1,011	927	723	668	6	6
1,479	1,759	19	5	1,985	1,257	21	6	1,806	1,402	1,266	1,970	11	11	1,381	1,283	1,637	1,552	28	28
81	177	1	0	114	142	1	0	109	149	148	106	1	0	137	128	100	89	0	0
3,533	3,160	11	13	4,088	2,607	13	11	3,910	2,675	2,621	3,952	18	13	2,641	2,460	3,574	3,329	18	18
275	608	1	1	403	472	0	3	354	512	477	385	1	9	509	479	312	288	3	3
6,481	9,858	70	34	8,166	8,288	63	32	7,605	8,702	7,854	8,352	70	93	8,380	7,871	7,241	6,874	83	83
596	961	3	9	683	887	1	7	665	887	836	704	3	6	853	809	595	574	3	3
1,025	2,382	17	16	1,236	2,204	11	14	1,222	2,150	2,172	1,255	14	28	2,147	2,008	994	936	17	17
1,655	1,892	8	9	2,393	1,163	6	8	2,140	1,371	1,254	2,223	13	13	1,284	1,215	2,059	1,866	13	13
2,336	3,943	18	14	3,202	3,074	14	14	2,904	3,331	2,930	3,228	22	17	3,232	3,036	2,604	2,568	19	19
5,456	11,365	80	65	7,416	9,487	65	49	6,672	10,015	9,010	7,468	77	130	10,003	9,938	5,703	5,535	117	117
6,748	5,888	33	31	8,366	4,242	30	30	8,060	4,420	4,353	8,049	41	48	4,611	4,366	7,237	6,799	50	50
1,037	1,853	3	7	1,338	1,588	3	13	1,257	1,577	1,504	1,388	10	21	1,608	1,486	1,066	1,003	4	4
2,468	5,001	21	35	3,597	3,998	21	35	3,231	4,108	3,863	3,462	22	66	4,344	3,991	2,681	2,501	26	26
6,501	7,659	125	90	8,232	6,010	118	85	7,670	6,447	5,732	8,245	132	140	6,420	5,843	6,846	6,430	111	111
213	285	1	0	329	174	0	0	264	220	192	299	2	2	215	183	249	238	3	3
855	1,677	17	12	1,089	1,472	7	13	1,092	1,431	1,310	1,083	18	19	1,405	1,296	944	883	22	22
1,378	2,227	15	15	1,848	1,740	14	14	1,690	1,844	1,681	1,844	17	39	1,757	1,565	1,396	1,313	23	23
2,473	3,947	41	30	3,409	3,039	40	25	3,133	3,288	3,125	3,363	53	42	3,285	3,034	2,717	2,604	57	57
2,179	4,756	23	38	3,209	3,775	27	45	3,202	4,113	3,568	3,215	33	82	4,246	3,705	2,283	2,149	40	40
3,756	6,013	28	54	5,114	4,710	18	59	4,516	5,069	4,730	4,812	22	111	5,076	4,706	4,195	3,979	17	17
443	728	5	2	697	488	6	1	623	543	494	671	8	1	534	482	563	534	7	7
670	1,185	3	2	980	860	7	3	894	930	904	906	4	5	901	840	804	737	3	3
805	1,478	34	22	1,224	1,108	33	24	1,046	1,224	1,115	1,115	30	38	1,253	1,134	849	793	44	44
391	527	5	7	581	330	6	7	557	352	380	526	7	10	342	299	469	426	5	5
2,136	3,151	17	32	2,563	2,773	17	28	2,413	2,799	2,647	2,521	26	72	2,798	2,621	2,155	1,930	19	19
14,803	17,761	81	68	18,125	14,542	70	73	17,243	15,060	13,553	18,356	115	444	14,785	14,081	17,047	16,400	102	102
428	1,075	6	9	632	893	5	9	566	925	872	626	7	12	924	841	463	442	8	8
1,673	3,251	19	38	2,411	2,567	14	38	2,166	2,766	2,500	2,337	23	56	2,714	2,557	1,895	1,754	19	19
2,237	2,598	24	15	2,084	2,897	18	12	2,686	2,111	2,014	2,929	41	40	2,014	1,863	2,461	2,307	33	33
900	1,514	6	17	1,181	1,237	7	14	1,072	1,295	1,209	1,188	14	30	1,309	1,156	925	827	14	14
328	482	4	1	469	340	3	0	428	370	350	441	4	2	371	344	385	366	4	4
678	832	9	9	1,009	523	4	10	914	604	544	938	11	9	629	533	787	710	12	12
790	1,541	4	8	1,103	1,226	8	3	954	1,368	1,278	1,034	8	13	1,317	1,210	872	812	8	8
439	559	2	4	599	393	4	4	533	448	412	565	4	8	419	395	486	465	6	6
1,559	1,716	23	6	2,311	970	26	8	1,991	1,188	1,129	2,123	29	19	1,180	1,082	1,333	1,732	28	28
1,296	2,401	9	8	1,726	2,017	6	9	1,526	2,142	2,136	1,560	15	16	2,473	1,947	1,185	1,020	17	17
8,765	17,696	109	115	11,878	14,719	99	111	10,927</											

No. 1

An Act amending Article X of the Constitution of the State of Colorado by adding thereto a new Section numbered 19 authorizing the General Assembly to provide by law for levy of an Ad Valorem Tax of not less than Five (\$5.00) Dollars nor more than Ten (\$10.00) Dollars per thousand on actual value of all intangible, personal property owned, held or secured by property within the State of Colorado, defining intangible personal property and providing for certain exemptions. Appropriating and allocating all funds derived from such tax, First to Direct Relief, Second to Match Federal Grants in Aid in Colorado, and Third, to replacement of Ad Valorem Taxes on Farms and Homes occupied by their owners, and for Educational Purposes.

	Yes	No
Adams	866	7,384
Alamosa	253	3,498
Arapahoe	1,575	12,676
Archuleta	62	1,126
Baca	263	1,982
Bent	491	2,796
Boulder	2,116	15,739
Chaffee	254	3,331
Cheyenne	155	1,215
Clear Creek	151	1,840
Conejos	198	3,171
Costilla	341	1,466
Crowley	143	1,746
Custer	89	924
Delta	513	6,095
Denver	14,701	145,359
Dolores	32	683
Douglas	111	1,735
Eagle	143	2,053
Elbert	173	2,180
El Paso	3,259	25,276
Fremont	845	7,444
Garfield	438	4,028
Gilpin	77	633
Grand	169	1,548
Gunnison	218	2,684
Hinsdale	15	194
Huerfano	360	4,530
Jackson	59	719
Jefferson	1,286	13,906
Kiowa	162	1,144
Kit Carson	265	2,972
Lake	224	2,580
La Plata	289	5,550
Larimer	1,867	14,096
Las Animas	1,694	7,844
Lincoln	179	2,376
Logan	801	6,183
Mesa	2,226	11,392
Mineral	20	424
Moffat	199	2,026
Montezuma	184	3,036
Montrose	708	5,349
Morgan	980	5,666
Otero	557	8,204
Ouray	69	982
Park	132	1,468
Phillips	390	1,766
Pitkin	49	782
Prowers	833	3,888
Pueblo	2,858	26,815
Rio Blanco	55	1,303
Rio Grande	200	4,302
Routt	362	3,959
Saguache	145	1,873
San Juan	41	624
San Miguel	105	1,159
Sedgwick	294	1,817
Summit	80	778
Teller	185	2,774
Washington	498	2,950
Weld	2,160	21,875
Yuma	639	4,284
	50,806	440,202

No. 2

An Act establishing a State Racing Commission; legalizing Horse and Dog Racing under License and Commission Supervision; prohibiting the imposition of License Fees by local authorities; providing that Eighty-five per cent (85%) of all persons connected with such racing shall be legal residents of Colorado; permitting Pari-Mutuel Wagers; Commission to receive Three per cent (3%) of all Pari-Mutuel Wagers and Ten per cent (10%) of all admission fees; net balance of revenue after deducting Commission Expense not to exceed Thirty Thousand Dollars (\$30,000) annually to be divided, Eighty-five per cent (85%) equally among the Counties of the State and Fifteen per cent (15%) to the Bureau of Information and Publicity.

	Yes	No
	3,383	4,939
	1,380	2,326
	6,797	7,831
	371	684
	661	1,495
	1,089	2,054
	5,817	11,911
	1,186	2,244
	418	888
	913	1,087
	739	2,326
	407	1,069
	660	1,194
	461	518
	1,483	4,745
	79,077	82,511
	165	443
	718	1,099
	855	1,139
	719	1,501
	12,921	15,222
	2,920	5,140
	1,821	2,501
	340	379
	850	855
	1,304	1,440
	121	89
	1,341	2,922
	321	437
	6,696	8,638
	495	827
	658	2,382
	1,259	1,574
	2,186	3,437
	5,536	10,122
	3,093	4,924
	722	1,732
	2,361	4,227
	5,914	7,090
	135	306
	731	1,417
	841	2,130
	1,786	3,990
	1,901	4,559
	2,399	6,104
	414	589
	907	743
	595	1,424
	296	468
	1,638	2,953
	18,028	11,748
	472	814
	1,079	3,278
	1,504	2,660
	527	1,427
	342	314
	419	764
	704	1,305
	403	445
	1,444	1,517
	932	2,225
	6,563	16,518
	977	3,752
	203,195	277,392

No. 3

An Act amending the State Constitution by adding thereto a new Article concerning the Conservation of State Wildlife Resources and limiting the use of Game and Fish Revenues exclusively for Game, Fish and Wildlife purposes; providing compensation for General State Services out of such revenues; and establishing the Game and Fish Commission and defining its powers and duties.

	Yes	No
	2,670	5,033
	1,754	1,880
	5,623	8,026
	334	694
	653	1,352
	1,407	1,642
	6,503	10,639
	1,379	2,096
	329	884
	851	1,094
	722	2,181
	396	932
	454	1,247
	550	395
	3,014	3,246
	59,575	92,688
	139	434
	609	1,129
	746	1,301
	788	1,353
	17,952	9,116
	4,357	3,663
	1,703	2,473
	226	410
	814	830
	1,884	988
	114	91
	1,240	2,942
	320	421
	6,000	8,248
	315	908
	496	2,385
	1,099	1,578
	2,121	3,179
	7,072	18,215
	4,496	3,689
	454	1,897
	2,453	3,856
	6,487	5,724
	250	184
	864	1,215
	731	2,097
	2,538	2,970
	2,181	4,000
	3,118	5,267
	305	634
	901	676
	650	1,251
	326	414
	1,815	2,565
	16,370	11,969
	536	708
	2,250	2,200
	1,739	2,381
	529	1,398
	287	354
	420	725
	805	1,130
	426	386
	1,360	1,478
	981	2,003
	7,809	14,926
	1,617	2,978
	196,907	272,768

No. 4

An Act relating to Income Taxes and their allocation and amending Section 17, Article X, of the State Constitution, and requiring the General Assembly to levy income taxes at not less than now provided in Sections 2, 5, and 7, Chapter 175, Session Laws of 1937; permitting taxation of intangibles; and allocating all revenues derived from income taxes for the purpose of replacing the property tax to the extent provided in Section 36, Chapter 175, Session Laws of 1937.

	Yes	No
	1,289	6,240
	860	2,585
	2,969	10,442
	100	894
	341	1,602
	801	2,167
	3,377	13,418
	726	2,644
	290	942
	216	1,534
	488	2,416
	1,074	837
	334	1,390
	175	684
	1,171	4,691
	21,741	126,987
	128	458
	219	1,442
	374	1,581
	395	1,683
	4,035	22,202
	1,212	6,370
	675	3,295
	103	534
	222	1,321
	573	1,891
	32	148
	644	3,462
	145	524
	2,093	12,188
	315	938
	519	2,383
	368	2,136
	1,034	4,151
	2,672	12,051
	2,511	5,401
	424	1,947
	1,474	4,682
	3,929	7,969
	32	374
	324	1,691
	566	2,201
	1,045	4,229
	1,093	4,881
	1,583	6,647
	129	764
	901	1,203
	584	1,199
	126	576
	1,037	3,219
	5,722	21,870
	633	964
	589	3,604
	750	3,151
	275	1,539
	68	518
	146	932
	339	1,500
	104	655
	295	2,380
	892	2,019
	3,994	18,402
	1,222	3,321
	81,787	366,049

No. 3

An Act amending the State Constitution by adding thereto a new Article concerning the Conservation of State Wildlife Resources and limiting the use of Game and Fish Revenues exclusively for Game, Fish and Wildlife purposes; providing compensation for General State Services out of such revenues; and establishing the Game and Fish Commission and defining its powers and duties.

Yes	No
2,670	5,033
1,754	1,880
5,623	8,026
334	694
653	1,352
1,407	1,642
6,503	10,639
1,379	2,096
329	884
851	1,094
722	2,181
396	932
454	1,247
550	395
3,014	3,246
59,575	92,688
139	434
609	1,129
746	1,301
788	1,353
17,952	9,116
4,357	3,663
1,703	2,473
226	410
814	830
1,884	988
114	91
1,240	2,942
320	421
6,000	8,248
315	908
496	2,385
1,099	1,578
2,121	3,179
7,072	18,215
4,496	3,689
454	1,897
2,453	3,856
6,487	5,724
250	184
864	1,215
731	2,097
2,538	2,970
2,181	4,000
3,118	5,267
305	634
901	676
650	1,251
326	414
1,815	2,565
16,370	11,969
536	708
2,250	2,200
1,739	2,381
529	1,398
287	354
420	725
805	1,130
426	386
1,360	1,478
981	2,003
7,809	14,926
1,617	2,978
196,907	272,768

No. 4

An Act relating to Income Taxes and their allocation and amending Section 17, Article X, of the State Constitution, and requiring the General Assembly to levy income taxes at not less than now provided in Sections 2, 5, and 7, Chapter 175, Session Laws of 1937; permitting taxation of intangibles; and allocating all revenues derived from income taxes for the purpose of replacing the property tax to the extent provided in Section 36, Chapter 175, Session Laws of 1937.

Yes	No
1,289	6,240
860	2,585
2,969	10,442
100	894
341	1,602
801	2,167
3,377	13,418
726	2,644
290	942
216	1,534
488	2,416
1,074	837
334	1,390
175	684
1,171	4,691
21,741	126,987
128	438
219	1,442
374	1,581
395	1,683
4,035	22,202
1,212	6,370
675	3,295
103	534
222	1,321
573	1,891
32	148
644	3,462
145	524
2,093	12,188
273	938
519	2,383
368	2,136
1,034	4,151
2,672	12,051
2,511	5,401
424	1,947
1,474	4,682
3,929	7,969
32	374
324	1,691
566	2,201
1,045	4,229
1,093	4,881
1,583	6,647
129	764
233	1,203
584	1,199
126	576
1,037	3,219
5,722	21,870
633	964
589	3,604
750	3,151
275	1,539
68	518
146	932
339	1,500
104	655
295	2,380
892	2,019
3,994	18,402
1,222	3,321
81,787	366,049

No. 5

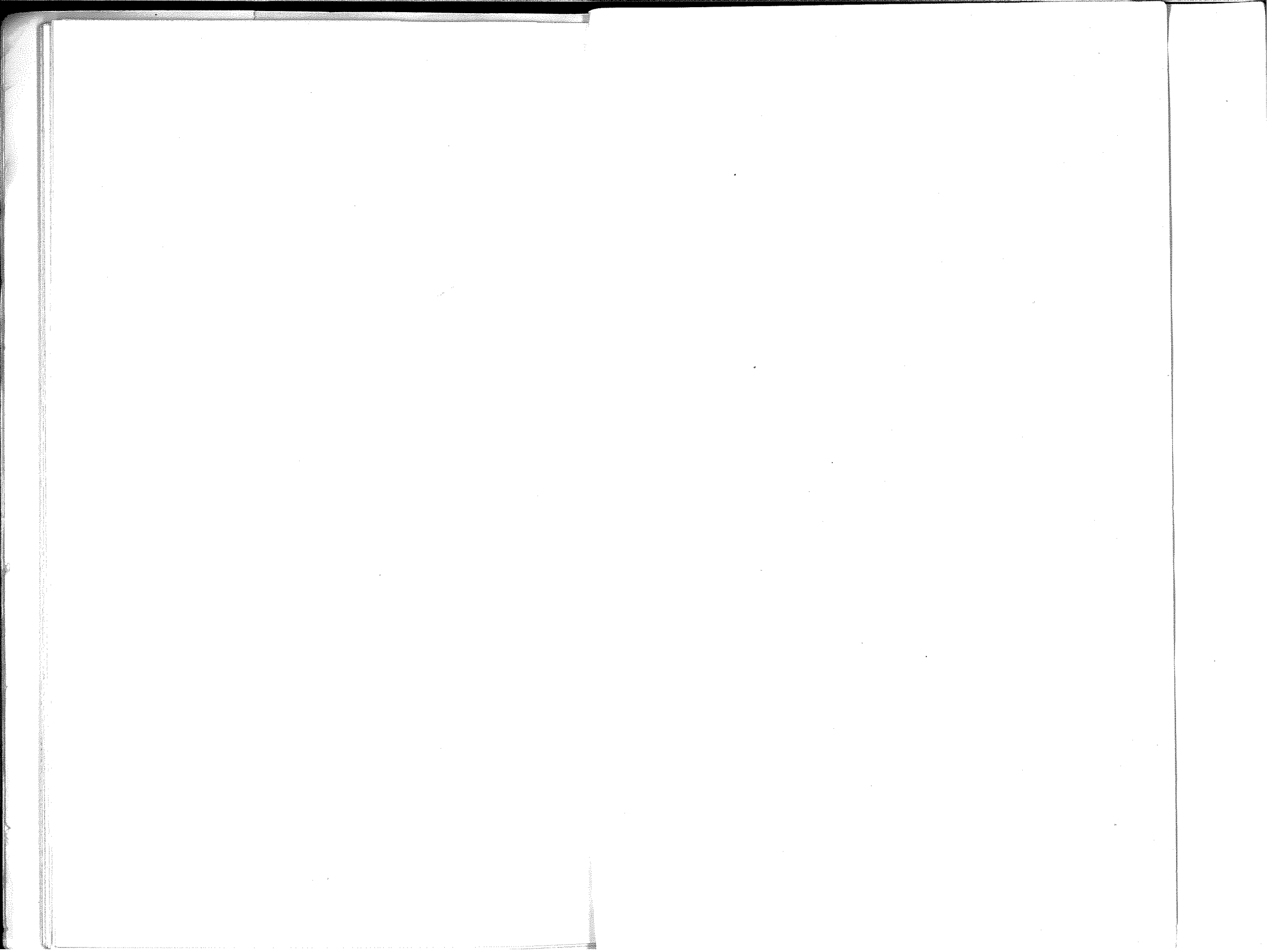
An Act to amend Article XXIV of the Constitution relating to Old Age Pensions and providing after July 1st, 1941, for a Guaranteed Old Age Pension of Thirty Dollars (\$30.00) per month, less other income, to all needy resident citizens over sixty-five (65) years of age who shall qualify by law therefor. Such pensions to be a first charge together with the Ordinary State Expenses, against the General Fund. Present Old Age Pension Laws to remain in effect until July 1st, 1941.

Yes	No
2,063	6,360
1,369	2,590
3,286	11,412
382	855
591	1,709
1,003	2,433
4,519	13,913
778	2,826
350	1,067
604	1,398
894	2,509
425	1,582
566	1,453
301	692
1,982	4,542
41,405	118,581
258	414
447	1,346
666	1,468
839	1,488
10,132	18,348
1,764	6,697
3,295	3,070
114	611
538	1,176
1,098	1,674
85	126
938	4,786
307	448
3,670	11,920
353	1,016
705	2,612
855	1,996
1,998	3,799
4,817	11,369
2,434	8,275
1,530	2,029
2,254	4,644
4,129	9,556
122	294
679	1,566
1,383	1,746
2,218	3,816
1,851	4,832
2,566	6,432
386	700
465	1,157
674	1,497
268	547
1,283	3,640
8,485	21,918
453	844
1,552	3,003
1,305	3,002
578	1,515
178	478
408	831
537	1,609
263	598
727	2,223
1,003	2,369
6,729	17,712
1,576	3,411
138,383	358,528

ABSTRACT OF VOTES CAST AT A PRIMARY ELECTION HELD ON TUESDAY, SEPTEMBER 10TH, A. D. 1940, FOR JUSTICE

	JUSTICES OF SUPREME COURT				GOVERNOR				LIEUTENANT GOVERNOR			SECRETARY OF STATE				STATE A
	Benjamin C. Hilliard—Dem.	George A. Luxford—Rep.	George H. Bradfield—Rep.	Frank Seydel—Rep.	George E. Saunders—Dem.	John A. Carroll—Dem.	George J. Knapp—Dem.	Ralph L. Carr—Rep.	John J. Downey—Dem.	Curtis F. Ritchie—Dem.	John C. Vivian—Rep.	Don B. Latta—Dem.	Hunt Winn—Dem.	Walter F. Morrison—Rep.	Neal W. Brown—Rep.	A. P. Ardourel—Dem.
Adams	1,787	959	673	103	1,244	943	82	1,773	1,033	865	1,643	1,051	841	1,247	461	1,711
Alamosa	2,681	1,519	133	11	321	427	25	346	239	317	412	273	243	243	81	613
Arapahoe	2,362	1,745	833	172	1,461	1,160	103	2,724	1,378	1,061	2,602	1,386	983	1,809	802	2,203
Archuleta	250	151	164	24	275	72	10	381	292	57	296	174	124	238	99	239
Baca	625	197	265	53	368	456	49	640	457	226	568	343	334	405	139	239
Bent	3,715	1,883	2,291	45	485	453	45	572	335	524	376	421	391	1,449	581	581
Boulder	3,713	1,292	2,391	244	2,931	1,780	171	3,947	2,277	1,900	3,789	1,132	3,328	2,752	1,449	663
Chaffee	789	193	166	25	705	250	141	403	555	382	380	567	366	240	1,055	3,704
Cheyenne	316	132	257	30	325	72	14	424	243	105	392	255	97	304	163	800
Clear Creek	627	193	101	23	506	252	16	331	396	239	314	317	361	201	113	289
Conejos	393	541	553	145	361	170	17	1,310	333	153	1,092	324	158	1,010	293	615
Costilla	894	50	46	4	1,194	186	55	115	748	306	107	743	261	69	371	371
Crowley	401	187	360	28	327	151	41	672	288	175	607	241	180	463	13	840
Custer	169	140	191	32	172	31	22	400	122	76	342	125	67	273	141	399
Delta	853	328	516	56	806	219	104	969	637	338	913	581	381	348	273	166
Denver	41,568	18,433	3,968	1,817	21,763	23,540	1,068	23,562	19,826	22,032	23,173	27,122	13,848	17,361	5,325	38,882
Dolores	327	36	157	15	359	77	33	246	378	66	201	186	179	131	84	323
Douglas	314	239	244	32	256	120	14	526	194	133	478	193	133	329	171	282
Eagle	606	217	173	24	577	206	13	446	474	234	411	445	239	295	114	596
Elbert	395	166	202	17	326	176	28	418	268	171	378	349	249	177	335	355
El Paso	3,827	1,812	2,098	546	2,867	1,529	277	4,879	2,245	1,837	4,614	2,949	1,134	2,717	1,44	3,544
Fremont	1,765	1,172	966	145	1,420	537	211	2,606	1,030	2,423	2,423	1,283	628	1,587	728	1,669
Garfield	1,014	664	627	93	890	422	44	1,538	733	435	1,392	589	578	1,082	406	1,021
Gilpin	188	86	51	12	204	50	2	163	108	103	140	93	93	88	48	178
Grand	284	255	186	26	247	88	9	482	182	127	447	115	195	366	76	275
Gunnison	698	112	109	108	577	237	112	237	477	357	231	408	374	155	76	663
Hinsdale	56	24	14	0	45	13	4	40	43	18	35	41	15	32	6	49
Huerfano	1,693	431	428	73	2,179	420	143	974	1,061	1,248	880	1,090	1,089	612	380	1,680
Jackson	56	33	39	3	32	37	1	72	27	37	69	23	40	52	17	57
Jefferson	2,027	1,957	1,145	220	1,440	810	42	3,284	1,173	935	3,287	1,182	865	2,380	878	1,874
Kiowa	129	112	175	17	135	33	12	315	86	59	290	93	49	235	81	125
Kit Carson	432	479	1,013	96	392	88	33	1,623	287	171	1,479	279	181	1,065	484	415
Lake	1,686	188	92	24	1,141	1,016	130	333	1,200	766	305	1,242	694	1,187	131	1,604
La Plata	773	159	380	29	700	264	41	607	838	111	555	399	458	187	154	792
Larimer	2,336	1,522	3,428	217	1,999	819	106	5,250	1,530	1,000	4,982	1,421	1,448	3,642	1,425	2,301
Las Animas	4,707	618	787	112	4,322	2,072	266	1,654	2,876	2,547	1,475	2,322	2,341	1,124	430	4,275
Lincoln	636	236	627	44	481	238	28	949	434	234	864	433	213	604	290	582
Logan	1,216	414	1,015	96	915	588	102	1,580	849	514	1,508	1,117	298	1,097	431	1,175
Mesa	1,328	437	673	47	999	521	73	1,223	933	478	1,173	772	589	371	292	1,260
Mineral	56	18	33	6	47	14	1	57	37	21	55	34	21	38	19	51
Moffat	498	316	360	104	451	165	19	816	388	194	784	151	423	523	239	522
Montezuma	1,023	192	532	150	1,258	249	74	989	1,242	386	838	631	677	610	303	1,071
Montrose	603	259	362	37	542	151	77	692	445	228	651	389	277	456	210	594
Morgan	1,451	684	1,430	94	1,339	552	107	2,247	1,020	616	2,091	804	780	1,711	434	1,371
Otero	1,584	457	595	68	984	807	135	1,194	720	1,017	1,127	945	725	829	307	1,479
Ouray	105	37	31	4	105	21	2	70	86	31	70	145	50	45	29	98
Park	193	138	111	20	158	56	1	281	119	83	255	165	145	95	226	179
Phillips	396	234	565	49	330	140	43	887	269	150	822	302	118	612	213	371
Pitkin	373	42	47	6	336	217	33	115	295	169	100	528	193	66	36	356
Prowers	973	452	650	82	799	361	81	1,335	588	485	1,223	528	516	944	320	900
Pueblo	7,102	1,401	1,760	265	4,161	3,277	1,040	3,522	2,238	6,165	3,410	4,776	2,333	2,206	1,233	6,787
Rio Blanco	208	263	232	23	193	74	10	544	161	72	488	116	119	385	140	214
Rio Grande	404	217	178	24	316	158	29	449	280	157	421	231	188	297	119	384
Routt	1,437	373	380	65	1,024	667	54	925	867	698	842	694	887	570	237	1,433
Saguache	246	80	93	9	228	68	30	212	163	125	193	161	111	115	85	247
San Juan	305	26	27	6	267	107	19	63	296	63	62	175	165	41	19	299
San Miguel	573	69	88	14	648	103	27	186	493	188	165	372	277	137	44	572
Sedgwick	261	290	310	29	258	80	5	675	189	97	610	220	79	496	124	260
Summit	256	133	122	26	172	142	11	315	183	103	283	86	195	154	146	253
Teller	1,790	189	245	50	1,435	506	155	523	1,031	858	462	1,860	314	314	191	1,743
Washington	879	372	865	70	844	268	43	1,400	635	339	1,263	611	364	963	333	837
Weld	3,995	1,763	7,240	351	2,832	1,790	236	9,057	2,367	2,010	8,399	1,998	2,293	8,154	1,344	3,925
Yuma	761	310	558	72	658	291	48	953	514	322	900	561	272	694	227	740
TOTAL	108,113	44,577	42,356	6,445	75,130	50,787	5,967	95,521	61,305	55,855	90,192	68,687	45,684	66,954	25,173	102,715

SECRETARY OF STATE			STATE AUDITOR		STATE TREASURER			ATTORNEY GENERAL			SUPT. PUBLIC INSTRUCTION		REGENTS UNIVERSITY OF COLORADO						
Hunt Winn—Dem.	Walter F. Morrison—Rep.	Neal W. Brown—Rep.	A. P. Ardourel—Dem.	Chas. M. Armstrong—Rep.	Lew M. Appel—Dem.	Homer F. Bedford—Dem.	Albert F. Cruise—Rep.	James E. Griffith—Dem.	Gail L. Ireland—Rep.	Arthur M. Morris—Rep.	Inez Johnson Lewis—Dem.	Lucile Horton Latting—Rep.	M. D. Currrigan—Dem.	Clifford W. Mills—Dem.	Vai B. Fischer—Dem.	John L. Faricy—Dem.	Frank D. Allen—Rep.	John Andrew—Rep.	
841	1,247	461	1,711	1,716	597	1,502	1,604	1,827	1,207	547	1,756	1,536	1,176	1,050	671	356	1,403	1,112	
273	242	81	2,618	2,323	223	480	312	624	178	126	669	287	418	416	208	139	265	231	
933	1,809	802	2,208	2,638	760	1,805	2,517	2,229	1,716	962	2,369	2,463	1,474	1,375	991	430	2,191	1,781	
124	238	99	2,239	2,328	113	219	303	255	176	149	279	278	185	173	87	60	262	204	
334	405	139	581	561	329	472	532	637	244	238	677	512	313	331	190	151	446	337	
421	391	149	663	540	368	555	502	728	303	250	772	457	396	408	237	198	426	342	
3,328	2,752	1,055	3,704	3,844	1,415	3,079	3,672	3,765	2,460	1,410	3,867	3,526	2,208	2,462	2,256	749	3,002	3,302	
366	240	163	800	385	285	739	346	832	222	165	904	346	557	491	307	223	309	260	
97	304	115	289	399	161	228	382	306	248	173	345	382	203	170	119	65	330	214	
361	201	113	615	319	209	530	306	621	199	122	649	299	408	386	263	86	267	216	
158	1,010	293	371	1,170	151	344	1,091	389	549	695	423	1,037	248	269	107	121	878	746	
261	69	19	840	90	464	640	102	864	55	53	899	101	582	513	235	205	84	76	
180	463	141	399	643	119	368	586	431	306	303	438	560	216	227	141	118	511	411	
67	275	114	166	367	55	160	327	183	231	159	176	326	92	101	55	63	284	212	
381	648	273	848	942	305	765	898	904	605	343	940	883	500	556	304	166	811	625	
13,848	17,361	5,825	33,882	22,895	19,044	24,856	22,602	40,630	15,928	8,093	40,109	22,109	28,937	26,574	16,809	5,562	21,374	19,340	
179	131	84	323	219	94	323	200	344	86	118	373	193	191	189	84	74	144	124	
133	329	171	282	503	91	268	461	306	287	203	329	462	194	202	128	61	337	117	
239	295	114	596	420	192	547	390	637	268	155	673	379	465	414	172	107	353	283	
177	248	144	355	388	120	367	370	376	217	175	411	354	260	238	161	83	311	269	
1,134	2,717	1,887	3,544	4,705	1,203	3,156	4,421	3,798	2,625	2,000	4,117	4,486	2,192	2,369	1,401	951	3,958	3,298	
628	1,632	728	1,669	2,443	574	1,400	2,259	1,751	1,444	951	1,778	2,217	958	910	437	840	1,960	1,618	
578	1,005	406	1,021	1,460	381	884	1,301	1,046	762	640	1,097	1,297	676	642	373	224	1,169	872	
115	88	48	178	145	56	172	133	184	67	67	192	124	127	139	53	25	104	80	
195	366	96	275	448	108	214	422	278	248	215	289	417	170	152	120	44	371	284	
374	155	76	663	229	236	630	225	688	137	94	730	225	480	400	294	148	197	181	
15	32	6	49	37	12	47	35	52	24	12	57	36	37	33	14	7	30	25	
1,089	612	380	1,680	918	639	1,716	846	1,754	613	342	1,826	717	1,212	1,199	612	589	725	649	
40	52	17	57	63	18	51	63	59	51	21	61	62	30	35	33	10	55	51	
865	2,380	878	1,874	3,227	713	1,495	3,092	1,974	1,872	1,419	2,040	3,091	1,228	1,265	860	325	2,769	2,405	
49	235	81	125	291	89	81	287	136	175	140	143	283	83	87	40	32	252	193	
181	1,065	484	415	1,538	176	305	1,459	421	852	704	463	266	266	258	172	94	1,229	1,009	
694	187	131	1,604	324	502	1,562	292	1,697	197	116	1,753	286	1,213	1,068	584	366	262	227	
458	427	154	792	577	242	682	532	808	289	267	840	514	548	488	276	165	446	396	
1,148	3,642	1,425	2,301	5,080	877	1,830	4,897	2,416	3,259	1,862	2,338	4,712	1,153	1,301	1,309	380	4,120	3,337	
2,341	1,124	430	4,275	1,547	1,614	4,067	1,393	4,755	845	707	4,884	1,374	3,260	2,968	1,503	1,280	1,214	1,070	
213	604	290	582	920	193	505	856	613	498	373	893	855	385	379	251	96	760	587	
298	1,097	431	1,175	1,533	493	1,052	1,476	1,243	745	745	1,316	1,399	739	556	529	250	1,210	1,029	
589	371	292	1,260	1,184	592	901	1,138	1,312	767	394	1,356	1,092	784	786	527	220	993	877	
21	38	19	51	56	20	40	52	52	42	16	55	54	34	35	22	2	47	40	
423	523	239	522	791	190	404	751	543	514	328	565	734	321	373	193	112	668	600	
677	610	303	1,071	882	400	1,002	812	1,151	459	461	1,283	720	615	689	367	259	674	544	
277	456	210	594	671	238	478	622	606	413	244	642	607	361	383	252	133	545	436	
780	1,711	434	1,371	2,207	619	1,207	2,001	1,463	1,328	837	1,573	1,850	759	818	678	1,739	1,337	1,337	
725	829	307	1,479	1,143	558	1,285	1,103	1,562	374	20	1,604	1,086	923	1,008	377	307	886	886	
50	45	29	70	70	45	74	71	107	54	34	109	66	65	71	43	15	59	51	
52	95	226	179	263	35	180	257	185	151	122	189	288	124	115	57	40	214	174	
118	612	213	371	848	139	344	798	400	445	404	424	777	226	179	202	68	669	555	
193	66	36	356	104	156	383	92	386	55	47	440	86	259	258	145	75	82	62	
516	944	320	1,236	754	471	1,187	999	337	637	628	992	1,160	517	549	244	244	894	894	
2,333	2,206	1,333	6,787	3,606	2,921	5,111	3,331	7,165	2,343	1,176	7,010	3,209	3,286	2,907	2,452	4,797	2,993	2,706	
119	385	140	515	478	82	176	478	218	299	230	216	411	142	146	68	40	415	310	
188	297	119	384	615	175	294	405	401	285	140	414	397	243	240	160	96	375	325	
887	570	237	1,433	874	366	1,274	882	1,438	477	328	1,502	780	781	884	549	305	656	525	
111	115	85	247	200	62	227	57	250	131	70	256	180	170	162	90	50	163	147	
165	41	19	299	64	102	264	182	318	283	28	301	53	195	198	106	53	47	48	
277	137	44	572	183	213	495	165	602	103	72	635	150	362	339	178	132	141	90	
79	496	124	260	634	97	218	597	272	451	160	282	575	139	137	134	50	513	382	
195	154	146	253	295	71	237	273	261	156	128	282	268	171	184	88	45	240	198	
314	314	191	1,743	485	524	1,487	448	1,797	250	237	1,858	459	1,049	1,080	602	399	381		
364	963	333	837	1,327	276	806	1,223	893	675	617	859	1,222	504	530	381	170	1,208	801	
2,293	8,154	1,344	3,925	8,798	1,822	2,936	8,504	4,007	5,344	3,364	4,065	8,036	2,311	2,425	1,850	799	7,077	6,326	
272	694	227	740	907	283	659	914	744	466	425	818	851	488	245	150	783	569	569	
45,684	66,954	25,173	102,715	91,940	43,961	79,049	87,838	107,693	56,829	36,014	109,372	85,090	68,609	65,831	42,814	23,779	77,557	67,679	



CONGRESSMAN, FIRST CONGRESSIONAL DISTRICT

County	Lawrence Lewis —D		James D. Parriott —R		George T. Evans —R	James Allander —Com.	Ward Rogers —Soc.
	P. E.	G. E.	P. E.	G. E.	P. E.	G. E.	G. E.
Denver	41,396	110,078	16,143	59,427	7,582	272	577

CONGRESSMAN, SECOND CONGRESSIONAL DISTRICT

County	Fred Cummings —D		William S. Hill —R		William R. Kelly —R	Robert F. Billings —Peace	Henry Neumann —Soc.
	P. E.	G. E.	P. E.	G. E.	P. E.	G. E.	G. E.
Adams	1,834	4,706	1,165	4,184	594	14	47
Arapahoe	2,344	7,435	2,184	7,518	629	22	79
Boulder	3,800	8,885	2,804	9,305	1,220	38	100
Cheyenne	339	833	367	799	109	5	6
Clear Creek	656	1,203	234	919	93	3	11
Douglas	318	846	471	1,181	77	2	8
Elbert	414	1,137	300	1,487	101	5	7
Gilpin	198	438	123	373	32	4	1
Jefferson	2,009	8,034	2,355	7,969	965	32	51
Kit Carson	459	1,185	1,339	2,306	328	12	9
Larimer	2,424	6,840	4,259	8,646	1,239	37	24
Lincoln	647	1,283	661	1,661	252	5	2
Logan	1,351	3,188	932	4,368	681	30	11
Morgan	1,616	3,119	1,189	3,805	1,179	35	8
Phillips	438	1,098	679	1,244	205	3	25
Sedgwick	291	990	507	1,328	193	3	3
Washington	958	1,388	947	2,138	441	7	8
Weld	4,188	11,870	2,886	14,678	6,725	61	63
Yuma	832	2,184	692	2,950	255	23	15
	25,116	66,662	24,094	76,859	15,318	341	478

CONGRESSMAN, THIRD CONGRESSIONAL DISTRICT

County	J. Edgar Chenoweth —R		Byron G. Rogers —D	
	P. E.	G. E.	P. E.	G. E.
Alamosa	308	1,923	669	1,919
Baca	533	1,434	698	1,250
Bent	476	1,605	863	2,083
Conejos	1,039	1,994	402	1,692
Costilla	91	1,102	836	1,482
Crowley	571	1,276	411	934
Custer	331	713	191	441
El Paso	4,593	16,132	4,043	13,459
Fremont	2,226	4,929	1,819	3,961
Huerfano	720	2,907	1,781	3,580
Kiowa	285	863	142	683
Las Animas	1,678	7,534	5,142	5,178
Mineral	53	214	55	256
Otero	1,122	5,006	1,675	4,368
Prowers	1,173	2,890	1,034	2,339
Pueblo	3,432	14,835	7,405	16,848
Rio Grande	409	2,842	400	1,879
Saguache	184	1,460	260	998
Teller	458	1,183	1,831	1,919
	19,351	70,842	29,657	65,269

CONGRESSMAN, THIRD CONGRESSIONAL DISTRICT TO FILL VACANCY

County	William E. Burney —D		Henry Leonard —R		Chas. Allen —D	W. T. Mathias —D
	P. E.	G. E.	P. E.	G. E.	P. E.	P. E.
Alamosa	2	2,332	19	2,084	243	...
Baca	...	1,216	4	1,322	...	1
Bent	23	1,783	...	1,754
Conejos	...	1,737	...	2,004
Costilla	...	1,469	...	1,064	28	...
Crowley	6	893	51	1,233
Custer	1	475	22	634
El Paso	...	12,603	319	16,524
Fremont	46	3,993	137	4,645	7	...
Huerfano	1	3,824	...	2,681	2	...
Kiowa	...	644	16	841	...	17
Las Animas	15	7,366	12	4,540	10	...
Mineral	...	250	...	211
Otero	6	4,236	84	4,952	14	...
Prowers	1	2,296	81	2,720	...	9
Pueblo	1,444	18,225	1,361	13,177	123	27
Rio Grande	...	1,954	18	2,724	27	...
Saguache	...	1,055	7	1,386	21	...
Teller	...	1,874	...	1,179
	1,545	68,225	2,631	65,675	475	54

CONGRESSMAN, FOURTH CONGRESSIONAL DISTRICT

County	Paul W. Crawford —R		Edward T. Taylor —D	
	P. E.	G. E.	P. E.	G. E.
Archuleta	294	576	303	649
Chaffee	372	1,428	916	2,292
Delta	908	2,557	965	3,607
Dolores	201	363	372	442
Eagle	409	1,185	705	1,334
Garfield	1,303	2,350	1,154	2,614
Grand	416	813	297	1,032
Gunnison	217	827	818	2,348
Hinsdale	35	105	57	148
Jackson	64	429	62	443
Lake	293	1,566	1,894	1,955
La Plata	517	2,740	876	3,172
Mesa	1,112	4,626	1,355	9,133
Moffat	755	1,308	556	1,079
Montezuma	730	1,548	1,358	1,919
Montrose	609	2,489	654	3,969
Ouray	44	349	116	796
Park	259	835	202	973
Rio Blanco	88	285	504	631
Routt	437	866	231	631
San Juan	785	1,688	1,525	2,908
San Miguel	59	291	343	409
Summit	165	500	681	1,037
	188	402	246	574
	10,260	30,126	16,190	44,095

STATE SENATOR, FIRST SENATORIAL DISTRICT, DENVER COUNTY

	P. E.	G. E.
Bratton, Leslie E.—R.....	15,885	77,164
Constantine, Joseph P.—D.....	21,843	90,305
Hart, Stephen H.—D.....	25,674	96,854
Harpel, John J.—R.....	17,511	78,909
Higgins, Val—D.....	19,001
Hirschfeld, A. B.—D.....	31,132	88,452
King, Harold Taft—R.....	14,790	71,786
Laws, Arthur H.—R.....	11,092
Latimer, M. R.—D.....	20,995
Minister, Howard L.—R.....	6,353
Smith, Eudochia Bell—D.....	23,238	81,169
Smith, J. Edgar—R.....	14,208	71,248
Stackhouse, Fred D.—R.....	11,996
Strong, Charles D.—D.....	20,256
Andersen, Harry—Soc.....	1,254
Barnetson, George K.—Soc.....	886
Kinder, Francis S.—Soc.....	966
Sherman, Edgar P.—Soc.....	1,103

STATE SENATOR, SECOND SENATORIAL DISTRICT

County	Glen W. Boyce —R		Walter W. Johnson —D	
	P. E.	G. E.	P. E.	G. E.
Pueblo	3,203	14,556	6,901	17,079

STATE SENATOR, THIRD SENATORIAL DISTRICT

County	Samuel R. Berkley —D		William E. Higby —R	
	P. E.	G. E.	P. E.	G. E.
El Paso.....	3,683	13,022	4,591	16,234

STATE SENATOR, THIRD SENATORIAL DISTRICT, TO FILL VACANCY

County	Frederick T. Henry —D		Harry D. MacDonald —R	
	P. E.	G. E.	P. E.	G. E.
El Paso.....	3,549	12,933	4,351	15,824

STATE SENATOR, FOURTH SENATORIAL DISTRICT

County	Andy McDonald —R		Ben Veltri —D		H. L. L. Anderson —D		Isidor Bueno —R		Paul J. Cordova —Ind.	
	P. E.	G. E.	P. E.	G. E.	P. E.	G. E.	P. E.	G. E.	P. E.	G. E.
Las Animas.....	1,298	5,872	3,779	5,920	2,506	457	1,197

STATE SENATOR, FIFTH SENATORIAL DISTRICT

County	Theo. G. Lashley —R		James R. Lord —D		Rudolph Johnson —D	
	P. E.	G. E.	P. E.	G. E.	P. E.	G. E.
Boulder	3,586	10,957	2,807	7,734	1,705

STATE SENATOR, SEVENTH SENATORIAL DISTRICT

County	Walter L. Bain —R		S. K. Clark —D	
	P. E.	G. E.	P. E.	G. E.
Weld	8,179	15,401	10,447

STATE SENATOR, EIGHTH SENATORIAL DISTRICT

County	Harold Ward Gardener —R		Dave C. Johnston —D		John R. Browne —R	
	P. E.	G. E.	P. E.	G. E.	P. E.	G. E.
Douglas	196	1,184	309	819	280
Jefferson	1,784	8,218	1,953	8,046	1,607
	1,980	9,402	2,262	8,865	1,887

STATE SENATOR, NINTH SENATORIAL DISTRICT

County	Chas. W. F. Meyer —R		Edwin C. Watts —D	
	P. E.	G. E.	P. E.	G. E.
Custer	317	657	171	506
Fremont	2,110	4,189	1,803	4,817
	2,427	4,846	1,974	5,323

STATE SENATOR, ELEVENTH SENATORIAL DISTRICT

County	Robert F. Rockwell —R	
	P. E.	G. E.
Delta	934	5,831
Gunnison	227	2,463
Hinsdale	39	211
	1,200	8,505

STATE SENATOR, THIRTEENTH SENATORIAL DISTRICT

County	Charles P. Murphy —R		Ernest Todd —D	
	P. E.	G. E.	P. E.	G. E.
Grand	444	1,206	272	701
Jackson	72	750	58	158
Moffat	761	1,370	520	1,071
Rio Blanco.....	462	971	198	519
Routt	805	2,131	1,501	2,848
	2,544	6,428	2,549	5,297

STATE SENATOR, NINETEENTH SENATORIAL DISTRICT

County	James B. Decker —R		John W. Turner —D	
	P. E.	G. E.	P. E.	G. E.
Archuleta	286	710	257	698
La Plata	569	3,101	859	3,454
Montezuma	828	2,076	1,098	1,559
San Juan.....	58	314	307	466
	1,741	6,201	2,521	6,177

STATE SENATOR, TWENTY-FIRST SENATORIAL DISTRICT

County	Robert D. Elder —D		W. G. McDonald —R		W. H. Twinning —D
	P. E.	G. E.	P. E.	G. E.	P. E.
Eagle	335	1,442	384	1,016	354
Garfield	533	1,792	1,398	3,093	649
Lake	1,373	2,208	295	1,345	748
Pitkin	102	513	90	421	540
Summit	153	518	260	456	133
	<u>2,496</u>	<u>6,473</u>	<u>2,427</u>	<u>6,331</u>	<u>2,424</u>

STATE SENATOR, TWENTY-SECOND SENATORIAL DISTRICT

County	Harold H. Davies —R		W. J. Parrish —D		William E. Randall —Soc.
	P. E.	G. E.	P. E.	G. E.	G. E.
Arapahoe	2,539	7,988	2,238	6,982	126
Elbert	361	1,612	357	928	8
	<u>2,900</u>	<u>9,600</u>	<u>2,595</u>	<u>7,910</u>	<u>134</u>

STATE SENATOR, TWENTY-THIRD SENATORIAL DISTRICT

County	J. D. Craighead —D		James B. Ryan —R		James Taylor —D
	P. E.	G. E.	P. E.	G. E.	P. E.
Crowley	143	952	583	1,198	316
Otero	1,106	4,482	1,123	5,138	719
	<u>1,249</u>	<u>5,434</u>	<u>1,706</u>	<u>6,336</u>	<u>1,035</u>

STATE SENATOR, TWENTY-FOURTH SENATORIAL DISTRICT

County	Charles D. Minshall —D		Willard B. Preston —R	
	P. E.	G. E.	P. E.	G. E.
Adams	1,741	4,329	1,558	4,705
Morgan	1,315	2,593	1,969	4,204
	<u>3,056</u>	<u>6,922</u>	<u>3,527</u>	<u>8,909</u>

REPRESENTATIVE, THIRTY-THIRD GENERAL ASSEMBLY, COUNTY OF ADAMS

	P. E.	G. E.
Patton, David—D.....	1,692	4,413
Shotwell, L. D., Jr.—R.....	1,509	4,587

REPRESENTATIVE, THIRTY-THIRD GENERAL ASSEMBLY, COUNTIES OF ALAMOSA AND COSTILLA

County	Everett Cole —R		George Lorton —D	
	P. E.	G. E.	P. E.	G. E.
Alamosa	260	1,952	623	2,703
Costilla	96	1,127	967	1,586
	<u>356</u>	<u>3,079</u>	<u>1,590</u>	<u>4,289</u>

REPRESENTATIVE, THIRTY-THIRD GENERAL ASSEMBLY, COUNTIES OF ARAPAHOE AND ELBERT

	Arapahoe		Elbert		Total	
	P. E.	G. E.	P. E.	G. E.	P. E.	G. E.
Beuck, Fred A.—R.....	1,971	7,439	373	1,648	2,344	9,087
Bostrom, Emil R.—D.....	1,699	6,977	355	1,199	2,054	8,176
Glasier, John T.—D.....	2,071	7,059	338	906	2,409	7,965
Lovelace, Stuart H.—R.....	2,265	7,500	277	1,183	2,542	8,683
Baker, Wm. H.—Soc.....	...	127	...	14	...	141
Harrison, Joe H.—Soc.....	...	107	...	7	...	114

REPRESENTATIVE, THIRTY-THIRD GENERAL ASSEMBLY, COUNTIES OF ARCHULETA AND CONEJOS

County	A. B. Bailey —R		Frank C. Belt —D	
	P. E.	G. E.	P. E.	G. E.
Archuleta	296	735	251	680
Conejos	1,139	2,216	437	2,153
	<u>1,435</u>	<u>2,951</u>	<u>688</u>	<u>2,833</u>

REPRESENTATIVE, THIRTY-THIRD GENERAL ASSEMBLY, COUNTY OF BACA

County	Fred E. Bear —R		Walter A. Rhodes —D		Ralph St Aubyn —D
	P. E.	G. E.	P. E.	G. E.	P. E.
Baca	618	1,672	538	1,188	340

REPRESENTATIVE, THIRTY-THIRD GENERAL ASSEMBLY, COUNTIES OF BENT AND KIOWA

County	Leonard H. Hudnall —D		H. H. King —R	
	P. E.	G. E.	P. E.	G. E.
Bent	791	2,242	489	1,522
Kiowa	141	607	305	975
	<u>932</u>	<u>2,849</u>	<u>794</u>	<u>2,497</u>

REPRESENTATIVE, THIRTY-THIRD GENERAL ASSEMBLY, COUNTY OF BOULDER

	P. E.	G. E.
Blum, Robert V.—D.....	3,427	9,364
Coleman, A. Dean—R.....	3,373	10,593
Higman, Howard—D.....	3,063	7,934
Newrock, Ben—R.....	2,892	7,351

REPRESENTATIVE, THIRTY-THIRD GENERAL ASSEMBLY, COUNTIES OF CHAFFEE AND LAKE

County	Frank Fehling —R		E. J. Levin —D		William D. O'Brien —D
	P. E.	G. E.	P. E.	G. E.	P. E.
Chaffee	393	2,452	...	1,539	864
Lake	302	1,799	...	1,769	1,690
	<u>695</u>	<u>4,251</u>	<u>...</u>	<u>3,308</u>	<u>3,348</u>

ABSTRACT OF VOTES CAST

REPRESENTATIVE, THIRTY-THIRD GENERAL ASSEMBLY,
COUNTIES OF CHEYENNE AND LINCOLN

County	O. C. Allen —D		A. H. Brentlinger —R	
	P. E.	G. E.	P. E.	G. E.
	Cheyenne	314	522	427
Lincoln	630	1,564	838	1,380
	944	2,086	1,265	2,546

REPRESENTATIVE, THIRTY-THIRD GENERAL ASSEMBLY,
COUNTIES OF CLEAR CREEK, EAGLE, GILPIN, PITKIN AND SUMMIT

County	Clifford I. Parsons —D		W. A. Roberts	Robert A. Theobald —D
	P. E.	G. E.	G. E.	P. E.
	Clear Creek	459	1,189	1,074
Eagle	445	1,472	999	272
Gilpin	128	631	231	43
Pitkin	306	613	293	224
Summit	152	575	415	181
	1,490	4,480	3,012	977

REPRESENTATIVE, THIRTY-THIRD GENERAL ASSEMBLY,
COUNTIES OF CROWLEY AND OTERO

	P. E.		G. E.		Total	
	P. E.	G. E.	P. E.	G. E.	P. E.	G. E.
	Douglas, Henry A.—R.....	456	1,124	1,024	5,596	1,480
Luginbill, A. J.—D.....	...	739	70	4,685	70	5,424
Pleiman, T. H.—D.....	369	805	1,239	3,414	1,608	4,219
Ward, Arlie M.—R.....	595	1,303	918	4,597	1,513	5,900

REPRESENTATIVE, THIRTY-THIRD GENERAL ASSEMBLY,
COUNTIES OF CUSTER AND FREMONT

County	Rockwell B. Canda —R		Albert E. Fearheiley —D		A. H. Sparks —R
	P. E.	G. E.	P. E.	G. E.	P. E.
	Custer	314	738	158	445
Fremont	1,392	5,061	1,535	3,870	1,210
	1,706	5,799	1,693	4,315	1,359

REPRESENTATIVE, THIRTY-THIRD GENERAL ASSEMBLY,
COUNTY OF DELTA

County	Harry Sanburg —R		J. C. Stephens —D		A. C. Tinsley —D
	P. E.	G. E.	P. E.	G. E.	P. E.
	Delta	895	3,700	548	3,426

REPRESENTATIVE, THIRTY-THIRD GENERAL ASSEMBLY,
CITY AND COUNTY OF DENVER

	P. E.	G. E.
Alden, Lambert—R.....	19,350	77,552
Atchison, Clyde A.—R.....	13,899	...
Avoy, Joseph T.—D.....	23,002	82,822
Bacon, C. Bus—D.....	22,698	...
Baker, George J.—D.....	29,794	86,597
Batholic, Arthur W.—R.....	9,980	...
Benedict, Mitchell—R.....	16,178	78,099
Black, William A.—R.....	20,470	81,582
Bloye, Roy C.—R.....	15,892	73,339
Bolger, Donald Paul—D.....	21,721	...
Butler, Lansford F.—R.....	20,050	72,830
Chrysler, Roy—R.....	21,131	80,011
Coloroso, Dominic A.—D.....	27,296	92,030
Crowley, Clem—D.....	32,136	88,121
Cutler, Frank H.—R.....	16,212	69,933
Daumann, Nelson W.—D.....	18,140	...
Davis, W. G.—D.....	27,109	83,816
Draper, Cecil—R.....	19,338	75,644
Frantz, Albert T.—D.....	17,231	...
Gertz, A. G.—R.....	14,086	...
*Godsman, Sidney P.—R.....	17,388	...
Grimes, Irving—D.....	31,681	94,162
Hansen, Fitch P.—D.....	19,114	...
Haskell, Charles A.—R.....	16,946	74,803
Henry, Lawrence M.—D.....	25,502	80,734
†Hersom, Maurine Thauer—R.....	10,841	63,046
Hickerson, William B.—D.....	27,622	82,945
Ionides, Stephen A.—R.....	16,977	68,285
Jennings, William J.—D.....	28,758	84,284
Johnson, Wesley—D.....	23,248	81,735
King, Harry A.—D.....	27,035	86,166
Kline, Herman—D.....	26,359	79,087
Kramer, Florence H.—D.....	28,988	83,884
Lewis, William A.—R.....	21,018	79,971
Mann, Earl W.—.....	17,496	69,001
Mayfield, William T.—R.....	15,712	66,595
McDonald, Michael D.—D.....	33,699	81,277
Morrissey, John J., Jr.—D.....	29,127	85,099
Musick, J. Roger—R.....	18,496	72,016
Sperling, Si—D.....	11,135	...
Staples, Harry Bradley—D.....	19,056	...
Brier, Paine—Soc.....	...	1,567
Holland, Winifred—Soc.....	...	1,811
Jones, Pearl—Soc.....	...	1,456
Watson, Roy.....	...	1,589

*Withdrawn after Primary election.
†Appointed to fill vacancy.

REPRESENTATIVE, THIRTY-THIRD GENERAL ASSEMBLY,
COUNTIES OF DOLORES, MONTEZUMA AND SAN MIGUEL

County	C. C. McAfee —R		Elizabeth E. Pellet —D		Tom H. Akin —D
	P. E.	G. E.	P. E.	G. E.	P. E.
	Dolores	217	374	357	527
Montezuma	905	2,015	787	1,770	975
San Miguel	155	554	488	1,027	261
	1,277	2,943	1,632	3,324	1,401

ABSTRACT OF VOTES CAST

**REPRESENTATIVE, THIRTY-THIRD GENERAL ASSEMBLY,
COUNTIES OF DOUGLAS, PARK AND TELLER**

County	Aden E. (Pat) Coleman —D		J. Fred Thomas —R		John J. Butler —D	James C. Lang —D	Ernest H. Sterling —D
	P. E.	G. E.	P. E.	G. E.	P. E.	P. E.	P. E.
Douglas	21	657	473	1,353	32	255	70
Park	49	835	262	1,016	31	95	42
Teller	796	1,832	488	1,535	679	345	302
	866	3,324	1,223	3,904	742	695	414

**REPRESENTATIVE, THIRTY-THIRD GENERAL ASSEMBLY,
COUNTY OF EL PASO**

	P. E.	G. E.
Cheever, Vernon—R.....	4,011	18,510
Cowen, W. W.—R.....	3,826	17,311
Dutcher, Oliver H.—D.....	3,284	11,829
Fontecchio, Dante—D.....	2,892	9,945
Heinicke, Alfred—D.....	3,082	12,017
Phillips, J. O.—R.....	3,766	16,292

**REPRESENTATIVE, THIRTY-THIRD GENERAL ASSEMBLY
COUNTIES OF GARFIELD AND RIO BLANCO**

County	E. E. Fordham —R		H. E. (Dick) Raley —D	
	P. E.	G. E.	P. E.	G. E.
Garfield	1,402	3,186	960	1,779
Rio Blanco.....	501	1,103	205	439
	1,903	4,289	1,165	2,218

**REPRESENTATIVE, THIRTY-THIRD GENERAL ASSEMBLY,
COUNTIES OF GRAND, MOFFAT AND ROUTT**

County	R. I. Gwillim —R		Pat Magill, Jr. —D		Herman Fegert —D	Claude A. Smith —D
	P. E.	G. E.	P. E.	G. E.	P. E.	P. E.
Grand	424	1,051	150	838	65	84
Moffat	756	1,380	120	1,177	403	94
Route	831	2,056	900	2,908	284	511
	2,011	4,487	1,170	4,923	752	689

**REPRESENTATIVE, THIRTY-THIRD GENERAL ASSEMBLY,
COUNTIES OF GUNNISON, HINSDALE AND SAGUACHE**

County	H. G. Lashbrook —R	
	P. E.	G. E.
Gunnison	227	2,496
Hinsdale	37	207
Saguache	185	1,724
	449	4,427

**REPRESENTATIVE, THIRTY-THIRD GENERAL ASSEMBLY,
COUNTY OF KUERFANO**

	P. E.	G. E.
Penny, Neil—D.....	1,831	3,226
Vigil, Daniel—R.....	917	3,567

**REPRESENTATIVE, THIRTY-THIRD GENERAL ASSEMBLY
COUNTIES OF JACKSON AND LARIMER**

County	Victor Hanson —R		E. I. (Ted) Herring —R		James Jensen —D		Paul M. Maxwell —D	
	P. E.	G. E.	P. E.	G. E.	P. E.	G. E.	P. E.	G. E.
Jackson ..	69	727	61	629	49	193	40	167
Larimer ..	3,995	10,241	4,412	11,212	1,991	5,679	1,975	5,469
	4,064	10,968	4,473	11,841	2,040	5,872	2,015	5,636

**REPRESENTATIVE, THIRTY-THIRD GENERAL ASSEMBLY,
COUNTY OF JEFFERSON**

	P. E.	G. E.
McGrath, Wm.—D.....	1,902	7,009
Pearson, Homer L.—R.....	3,167	9,338

**REPRESENTATIVE, THIRTY-THIRD GENERAL ASSEMBLY,
COUNTY OF KIT CARSON**

	P. E.	G. E.
Buchanan, C. J.—R.....	979	2,025
Page, Fred—D.....	458	1,493
Boggs, John S.—R.....	837

**REPRESENTATIVE, THIRTY-THIRD GENERAL ASSEMBLY,
COUNTIES OF LA PLATA AND SAN JUAN**

County	Tom Kimball —R		L. W. Parcell —D
	P. E.	G. E.	G. E.
La Plata.....	531	4,033	2,386
San Juan.....	57	285	552
	588	4,318	2,938

**REPRESENTATIVE, THIRTY-THIRD GENERAL ASSEMBLY,
COUNTY OF LAS ANIMAS**

	P. E.	G. E.
Horsman, John—D.....	4,105	8,249
Llewellyn, Robert—R.....	970	5,188
Morgan, Wright—R.....	806	4,493
Valdez, J. C.—D.....	3,242	6,425
Cordova, Paul J.—R.....	496
Mathias, Glenn O.—D.....	2,976
Stancato, Lee G.—R.....	470
Vigil, Frank—R.....	417

**REPRESENTATIVE, THIRTY-THIRD GENERAL ASSEMBLY
COUNTY OF LOGAN**

	P. E.	G. E.
Hamil, David A.—R.....	1,541	5,378
Heist, J. H.—D.....	1,216	2,186

**REPRESENTATIVE, THIRTY-THIRD GENERAL ASSEMBLY,
COUNTY OF MESA**

	P. E.	G. E.
Evans, Jack—R.....	1,093	7,463
Hornbaker, J. E.—D.....	967	6,761
McMullin, Samuel G.—R.....	855	4,628
Meek, W. S.—D.....	1,122	8,081

**REPRESENTATIVE, THIRTY-THIRD GENERAL ASSEMBLY,
COUNTIES OF MINERAL AND RIO GRANDE**

County	P. E. Harney —D		Roy McConnell —R	
	P. E.	G. E.	P. E.	G. E.
Mineral	56	283	52	171
Rio Grande.....	425	2,296	420	2,678
	481	2,579	472	2,849

**REPRESENTATIVE, THIRTY-THIRD GENERAL ASSEMBLY,
COUNTIES OF MONTROSE AND OURAY**

County	J. C. Kerr —R		J. Carl Wilson —D	
	P. E.	G. E.	P. E.	G. E.
Montrose	652	3,424	645	3,141
Ouray	67	541	98	637
	719	3,965	743	3,778

**REPRESENTATIVE, THIRTY-THIRD GENERAL ASSEMBLY
COUNTY OF MORGAN**

	P. E.	G. E.
Bartholomew, Lew E.—R.....	2,012	3,403
Glenn, George—D.....	1,174	3,703
Mitchell, W. T.—D.....	695

**REPRESENTATIVE, THIRTY-THIRD GENERAL ASSEMBLY,
COUNTIES OF PHILLIPS AND SEDGWICK**

County	William J. Jenkins —D		Roy E. Owens —R		Rubert Johnson —D
	P. E.	G. E.	P. E.	G. E.	P. E.
Phillips	176	924	877	1,500	301
Sedgwick	260	1,045	613	1,317	64
	436	1,969	1,490	2,817	365

**REPRESENTATIVE, THIRTY-THIRD GENERAL ASSEMBLY,
COUNTY OF PROWERS**

	P. E.	G. E.
Russell, Edward O.—D.....	1,015	2,715
Strain, Marlon E.....	1,228	2,686

**REPRESENTATIVE, THIRTY-THIRD GENERAL ASSEMBLY,
COUNTY OF PUEBLO**

	P. E.	G. E.
Booth, James W.—R.....	3,060	15,597
Cawfield, Sterling—D.....	6,165	18,547
Comings, W. B.—D.....	5,550	16,964
Dameron, Thos. H.—D.....	6,005	18,012
Ray, Paul M.—R.....	3,023	14,073
Strait, Harry—R.....	3,050	14,538
Sumey, R. W.—D.....	4,484	14,978
Young, Chester R.—R.....	3,074	14,215
Wilkes, Don Q.—D.....	4,142

**REPRESENTATIVE, THIRTY-THIRD GENERAL ASSEMBLY,
COUNTY OF WASHINGTON**

	P. E.	G. E.
Donahue, J. H.—D.....	880	1,639
Shirley, J. R.—R.....	774	2,117
Gill, Frank L.—R.....	700

**REPRESENTATIVE, THIRTY-THIRD GENERAL ASSEMBLY,
COUNTY OF WELD**

	P. E.	G. E.
Beltz, Jasper N., Sr.—D.....	2,714	9,268
Bickling, Mac—D.....	3,060	10,459
Carlson, Wm. Albion—R.....	7,351	16,191
Norcross, Fred—R.....	7,034	16,289
Ogilvie, James S.—R.....	7,423	15,832
Townsend, Charles C.—R.....	6,230	14,717
Walling, Edna U.—D.....	3,065	9,139
Wilkinson, Lacy L.—D.....	275	10,099
Payne, Shirley M.—R.....	4,915

**REPRESENTATIVE, THIRTY-THIRD GENERAL ASSEMBLY,
COUNTY OF YUMA**

	P. E.	G. E.
Tabor, Harold A.—R.....	895	3,214
Williams, Ellis L.—D.....	784	2,293

DISTRICT ATTORNEY FIRST JUDICIAL DISTRICT

County	Harry Behm —D		Richard H. Simon —R		Christian Dewey Stoner —R
	P. E.	G. E.	P. E.	G. E.	P. E.
Adams	1,886	5,424	956	3,852	714
Arapahoe	2,284	7,247	2,183	8,117	633
Clear Creek.....	615	1,031	176	1,215	133
Gilpin	193	413	76	423	71
Jefferson	1,930	7,748	1,098	8,724	2,236
	6,908	21,863	4,489	22,331	3,787

**DISTRICT JUDGE SECOND JUDICIAL DISTRICT
(To Fill Vacancy)
CITY AND COUNTY OF DENVER**

	P. E.	G. E.
Miles, Floyd F.—D.....	40,415	83,423
Sackmann, Charles C.—R.....	22,944	69,283

**DISTRICT ATTORNEY SECOND JUDICIAL DISTRICT
CITY AND COUNTY OF DENVER**

	P. E.	G. E.
Bowman, Don D.—D.....	6,631
Burke, James T.—R.....	15,295	87,560
Cummings, Ralph J.—D.....	19,195
Moore, O. Otto—D.....	19,215	67,512
Robinson, Finlay M.—R.....	8,630

DISTRICT ATTORNEY THIRD JUDICIAL DISTRICT

County	Joseph W. Hawley —R		John N. Mabry —D	
	P. E.	G. E.	P. E.	G. E.
Baca	519	1,404	674	1,316
Bent	460	1,594	765	2,028
Huerfano	821	2,493	1,977	4,500
Las Animas.....	1,457	5,629	5,064	7,574
Prowers	1,145	2,480	1,030	2,837
	<u>4,402</u>	<u>13,600</u>	<u>9,510</u>	<u>18,255</u>

DISTRICT ATTORNEY FOURTH JUDICIAL DISTRICT

County	Irl Foard —R		Thomas I. Purcell —D		Clyde H. Babcock —R
	P. E.	G. E.	P. E.	G. E.	P. E.
Cheyenne	247	844	290	743	189
Douglas	165	1,136	295	905	319
Elbert	233	1,643	373	933	167
El Paso.....	2,800	15,809	3,930	14,107	2,125
Kit Carson.....	548	2,284	418	1,059	946
Lincoln	287	1,584	592	1,259	564
Teller	265	1,318	1,752	1,955	221
	<u>4,545</u>	<u>24,618</u>	<u>7,650</u>	<u>20,961</u>	<u>4,531</u>

DISTRICT ATTORNEY FIFTH JUDICIAL DISTRICT

County	Harold A. Grant —R		William J. Meehan —D	
	P. E.	G. E.	P. E.	G. E.
Eagle	986	713	1,583
Lake	2,347	1,824	1,264
Summit	481	269	525
	<u>3,814</u>	<u>2,806</u>	<u>3,372</u>

DISTRICT ATTORNEY SIXTH JUDICIAL DISTRICT

County	James M. Noland		No Republican Candidate
	P. E.	G. E.	
Archuleta	297	924	
Dolores	392	606	
La Plata.....	886	4,834	
Montezuma	1,315	2,812	
San Juan.....	351	657	
	<u>3,241</u>	<u>9,833</u>	

DISTRICT ATTORNEY SEVENTH JUDICIAL DISTRICT

County	A. Allen Brown —R		William Weiser —D	
	P. E.	G. E.	P. E.	G. E.
Delta	922	4,620	859	2,429
Gunnison	218	1,558	636	1,619
Hinsdale	35	150	54	103
Mesa	1,057	6,228	1,384	8,163
Montrose	618	3,467	596	2,859
Ouray	66	563	102	612
San Miguel.....	161	592	580	904
	<u>3,077</u>	<u>17,178</u>	<u>4,211</u>	<u>16,689</u>

DISTRICT ATTORNEY EIGHTH JUDICIAL DISTRICT

County	Hatfield Chilson —R		Barnard Houtchens —D		Roy M. Briggs —R	M. E. H. "Marc" Smith —R
	P. E.	G. E.	P. E.	G. E.	P. E.	P. E.
Boulder	2,189	10,165	3,484	8,744	800	769
Jackson	59	531	54	322	3	5
Larimer	3,733	10,849	2,222	5,730	744	729
Weld	1,616	12,781	3,930	13,571	4,065	3,390
	<u>7,597</u>	<u>34,326</u>	<u>9,690</u>	<u>28,367</u>	<u>5,612</u>	<u>4,893</u>

DISTRICT ATTORNEY NINTH JUDICIAL DISTRICT

County	Carl W. Fulghum —R		Allyn Cole —R	No Democratic Candidate
	P. E.	G. E.	P. E.	
Garfield	1,066	4,392	609	
Pitkin	94	709	30	
Rio Blanco.....	265	1,228	313	
	<u>1,425</u>	<u>6,329</u>	<u>952</u>	

**DISTRICT JUDGE TENTH JUDICIAL DISTRICT
(To Fill Vacancy)**

County	J. Arthur Phelps —R		French L. Taylor —D	
	P. E.	G. E.	P. E.	G. E.
Crowley	594	1,333	416	871
Kiowa	299	947	143	612
Otero	1,121	5,525	1,585	4,332
Pueblo	3,280	15,993	6,876	16,330
	<u>5,294</u>	<u>23,798</u>	<u>9,020</u>	<u>22,145</u>

DISTRICT ATTORNEY TENTH JUDICIAL DISTRICT

County	John H. Marsalis —D		Ralph L. Neary —R	
	P. E.	G. E.	P. E.	G. E.
Crowley	384	806	592	1,331
Kiowa	125	605	298	949
Otero	1,484	4,122	1,104	5,505
Pueblo	6,794	16,372	3,308	16,136
	<u>8,787</u>	<u>21,905</u>	<u>5,302</u>	<u>23,921</u>

DISTRICT ATTORNEY ELEVENTH JUDICIAL DISTRICT

County	Emerson M. Eagleton —R		William S. Rush —D	
	P. E.	G. E.	P. E.	G. E.
Chaffee	350	1,656	894	2,361
Custer	348	740	162	440
Fremont	2,372	5,169	1,702	4,141
Park	246	1,105	176	734
	<u>3,316</u>	<u>8,670</u>	<u>2,934</u>	<u>7,676</u>

DISTRICT ATTORNEY TWELFTH JUDICIAL DISTRICT

County	George H. Blickhahn —R		Leonard M. Haynie —D	
	P. E.	G. E.	P. E.	G. E.
Alamosa	309	2,097	641	2,454
Conejos	1,019	2,049	421	2,160
Costilla	96	1,211	931	1,484
Mineral	54	204	41	292
Rio Grande.....	395	2,656	424	2,383
Saguache	175	1,368	238	1,041
	<u>2,048</u>	<u>9,585</u>	<u>2,696</u>	<u>9,814</u>

DISTRICT ATTORNEY THIRTEENTH JUDICIAL DISTRICT

County	Thomas E. Munson —D		William B. Paynter —R	
	P. E.	G. E.	P. E.	G. E.
Logan	1,346	3,865	1,452	3,787
Morgan	1,420	2,606	2,086	4,446
Phillips	434	1,198	804	1,184
Sedgwick	277	1,061	601	1,317
Washington	904	1,523	1,265	2,313
Yuma	760	2,152	882	3,129
	<u>5,141</u>	<u>12,405</u>	<u>7,090</u>	<u>16,176</u>

DISTRICT ATTORNEY FOURTEENTH JUDICIAL DISTRICT

County	Ray Monson —D		S. E. Pleasant —R	
	P. E.	G. E.	P. E.	G. E.
Grand	266	869	403	1,037
Moffat	524	927	769	1,705
Routt	1,495	3,023	791	1,946
	<u>2,285</u>	<u>4,819</u>	<u>1,963</u>	<u>4,688</u>

**DIRECTORS OF CADDOA RESERVOIR AND ARKANSAS VALLEY BASIN CONSERVANCY AND IMPROVEMENT DISTRICT
PROWERS COUNTY**

Gordon, Arthur C.—R.....	667
Smartt, Hacket—D.....	442

**MOFFAT TUNNEL COMMISSIONERS
DIVISION ONE**

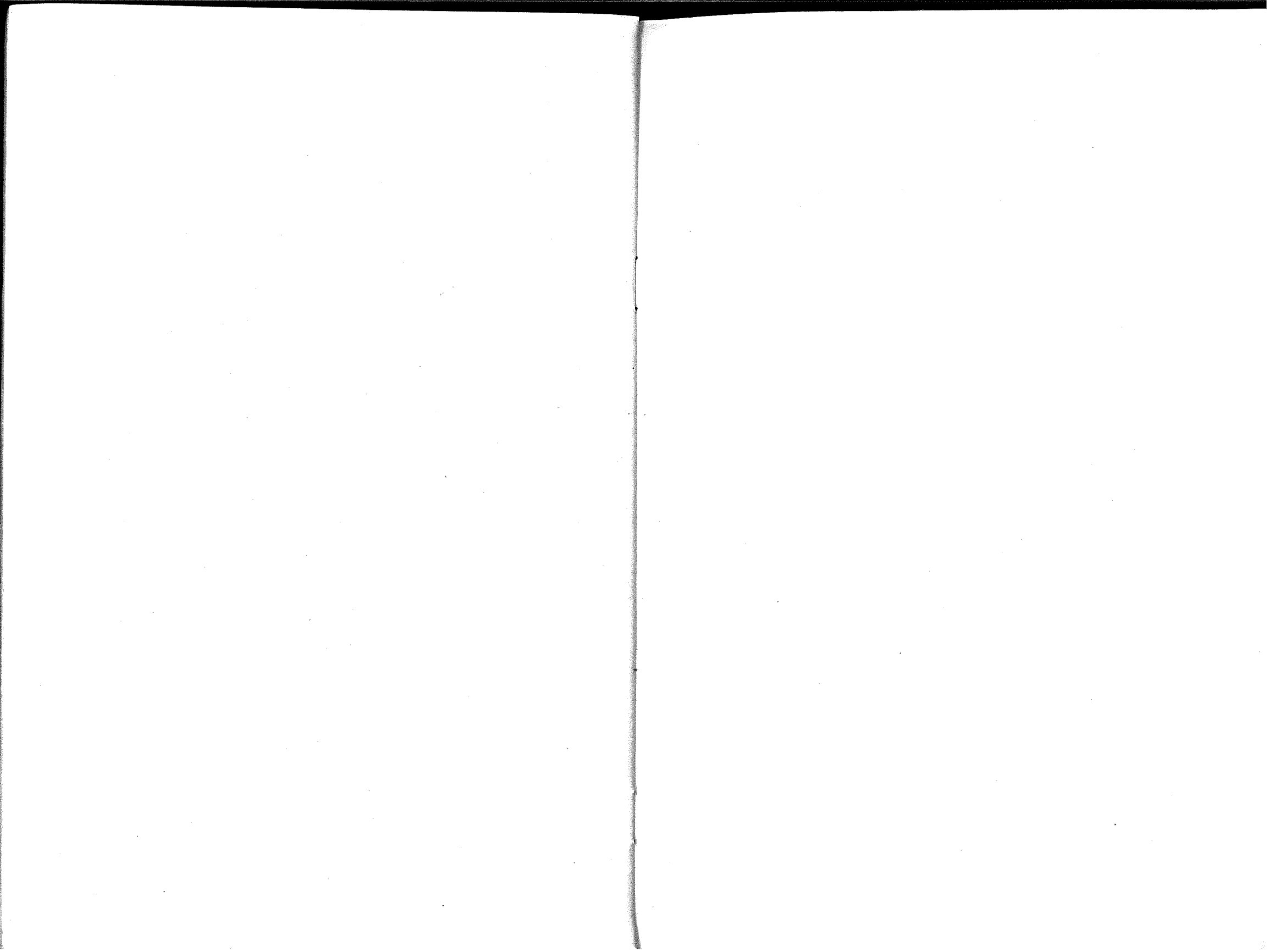
County	Eugene W. Ambrose Real Estate Owners	Rodney J. Bardwell Real Estate Taxpayers	William J. Bennett Property Owners	Elmo Hall Non-Partisan League
	G. E.	G. E.	G. E.	G. E.
Adams	56	65	90	22
Boulder	19	15	16	8
Denver	19,709	25,057	26,727	4,714
Gilpin	6	7	8	0
Jefferson	473	650	856	106
	<u>20,263</u>	<u>25,794</u>	<u>27,697</u>	<u>4,850</u>

DIVISION ONE

County	Samuel M. January Property Taxpayers	Frank Oakes Pioneer M. T.	Thomas G. Vick Roy Real Estate Owners
	G. E.	G. E.	G. E.
Adams	52	34	34
Boulder	20	11	12
Denver	20,299	9,567	14,108
Gilpin	5	1	1
Jefferson	528	190	241
	<u>20,904</u>	<u>9,803</u>	<u>14,396</u>

DIVISION TWO

County	Walter L. Carver Citizens	Thomas S. Iles Tunnel Taxpayers	Charles H. Leckenby Western Slope
	G. E.	G. E.	G. E.
Eagle	17	16	17
Grand	195	401	407
Moffat	677	600	480
Routt	715	997	1,089
	<u>1,604</u>	<u>2,014</u>	<u>1,993</u>



COUNTY OFFICERS—STATE

COUNTY	COUNTY SEAT	COUNTY CLERK	COUNTY TREASURER	ASSESSOR	SHERIFF	COUNTY JUDGE	CLERK COUNTY COURT	CLERK COUNTY COURT
1 Adams	Brighton	Arle J. Tripp—D	H. L. Prather—D	E. G. Waymire—D	Herman A. Farney—R	Homer G. Preston—D	Margaret McGuire—D	Howa
2 Alamosa	Alamosa	C. M. Van Fleet—D	Miss E. P. Joyce—D	Olof Bergman—D	Maurice Smith—D	D. W. Kirkpatrick—R	Mrs. Chloe Stubbs—R	Mrs. Joh
3 Arapahoe	Littleton	Earl K. Downing—R	Charles B. Sinclair—R	W. W. Hanson—D	E. E. Monzingo—R	Henry Bruce Teller—D	J. T. Robertson—D	John Fred
4 Archuleta	Pagosa Springs	Frank Conner—R	James Kenney—D	Kenneth D. Hill—D	Earl Crouse—R	J. T. Martinez—R	J. T. Martinez—R	Fred
5 Baca	Springfield	Walter P. Powell—R	Hannah Baker—D	Jack L. Patterson—D	Jared J. Hansen—D	W. R. Randall—D	Mrs. W. R. Randall—D	Henr
6 Bent	Las Animas	Mrs. Myrtle V. Johnson—D	R. W. Esgar—R	C. N. Troup—R	L. C. Coffelt—D	Herman A. Bailey—D	Herman A. Bailey—D	Wm
7 Boulder	Boulder	Ed Adams—D	H. A. Lennartz—D	Aylwin A. Smith—R	George A. Richart—R	William E. Buck—R	Lynn R. McIntosh—R	C. W.
8 Chaffee	Salida	A. W. Samson—R	Chas. C. White—D	Wm. A. Aby—R	H. J. Swain—R	R. S. Buchanan—D	Arthur E. Smith—R	Arth
9 Cheyenne	Cheyenne Wells	Thos. H. McKown—D	Lee Ross—R	Edward J. Hogan—D	Fred B. Fletcher—R	W. A. Martinson—R	Miss Mattie Trimble—R	H. C
10 Clear Creek	Georgetown	Kenneth E. Moscript—R	Robert W. Harvey—R	Edmund Rowse—R	William J. Harvey—R	George D. Criley—D	George D. Criley—D	John J.
11 Conejos	Conejos	J. A. Rivera—R	J. G. Lopez—R	Adolph Gallegos—D	Lafayette Cantu—D	J. Fidel Chavez—D	Mary Galvez—D	F. L.
12 Costilla	San Luis	Abel Trujillo—D	Joe M. Espinoza—D	Frank Espinoza—D	Fred Espinoza—R	J. O. Valdez—D	Miss Linda M. Galavan—D	Frank
13 Crowley	Ordway	H. M. Greene—R	Philo G. Strever—R	Edward P. Johnson—R	Henry Adam—D	E. M. Stroud—D	Edward L. Mott—R	Denn
14 Custer	Westcliffe	Lewis L. Abbott—D	Clarence J. Dolan—D	Mel Kastendieck—R	James H. Isabell—R	August N. Menzel—R	Arthur A. Clements—R	Edwa
15 Delta	Delta	O. A. Ehr Gott—R	Clement A. Bowie—R	J. B. Drake—D	Ray R. Lockhart—R	Arthur A. Clements—R	Arthur A. Clements—R	Gus
16 Denver	Denver	George F. Rock—D	F. E. Wilson—D	F. E. Wilson—D	Wm. E. Guthner—R	C. E. Kettering—R	John L. Griffith—R	F. W
17 Dolores	Rico	Miss Kathleene Blackham—R	H. G. Keown—D	E. E. Ballenger—D	Fred Young—R	George E. Hicks—D	George E. Hicks—D	O. P
18 Douglas	Castle Rock	Chas. Prescott—D	Robert T. Jones—D	Carroll Hier—D	S. H. Buckner—R	Edgar S. Triplett—R	Edgar S. Triplett—R	Char
19 Eagle	Eagle	Mrs. Mae Cox—R	Forrest W. Cave—D	George W. Watson—D	W. M. Wilson—R	Mrs. Mabel A. Ethel—D	Mrs. Mabel A. Ethel—D	Chap
20 Elbert	Kiowa	Mrs. Delpha S. Moreland—D	C. W. Elsner—R	Orley Crouch—R	G. R. Brown—R	F. D. Hart—R	F. D. Hart—R	Harr
21 El Paso	Colorado Springs	Charles Ozias—D	O. W. Ward—D	A. W. Sparkman—R	Samuel J. Deal—D	Irvin E. Jones—D	Harry A. Thompson—D	Miss
22 Fremont	Canon City	Katherine Komfala—D	Thos. M. Warner—D	J. W. Haymaker—R	Foster Ranson—R	Joseph D. Blunt—R	Florence Gerlach—R	Jonat
23 Garfield	Glenwood Springs	Walter J. Frost—D	C. H. Durant—R	Bert Brenton—R	Roy Terrell—R	William A. Mason—R	William A. Mason—R	N. D
24 Gilpin	Central City	A. C. Thomas—D	Hugh L. Lawry—R	William O. Ziege—D	Oscar Williams—R	James M. Seright—D	James M. Seright—D	J. W
25 Grand	Hot Sulphur Springs	R. O. Throckmorton—R	Charles W. Bloom—D	Victor C. Huffaker—D	Mark E. Fletcher—D	J. N. Pettingell—R	J. N. Pettingell—R	Brice
26 Gunnison	Gunnison	Sam C. Hartman—R	M. J. Fisher—D	Kenneth G. Mark—R	H. G. Lashbrook—R	Clyde Welch—D	John Saunders—D	Mrs.
27 Hinsdale	Lake City	Mrs. Mabel B. Rawson—R	Mrs. Pearl McCloughan—R	W. E. Vernon—D	Hugh Coburn—D	John R. Liska—D	Betty R. Liska—D	H. G
28 Huerfano	Walsenburg	Damacio Vigil—D	Edward Slates—D	J. Frank Cordova—D	Claud Swift—D	Joseph A. Barron—D	Aloysius Sanchez—D	Char
29 Jackson	Walden	Mrs. L. F. Mitchell—D	Miss Florence A. Wilkins—D	John E. Stephens—D	John D. Bulis—R	J. A. McNamara—D	J. A. McNamara—D	A. G
30 Jefferson	Golden	W. T. Marsh—R	Sam'l Bolitho—R	Arthur J. Apel—R	Willis Morris—R	Osmer E. Smith—R	A. T. Maserang—R	Char
31 Kiowa	Eads	Art Bradbury—R	Wm. E. Rose—R	Edwin Immer—R	C. A. Wood—D	George B. Black—R	George B. Black—R	Reub
32 Kit Carson	Burlington	Mrs. Pearl Klockenteger—R	L. M. Bushart—R	Robert L. Wilkinson—R	R. W. Plummer—R	E. M. Short—R	E. M. Short—R	Mrs.
33 Lake	Leadville	John Gregory—D	Frank E. Kendrick—D	John J. Bohon—D	Angelo Travison—D	Charles H. Schlaepfer—R	Charles H. Schlaepfer—R	Marg
34 La Plata	Durango	Mrs. Edith C. Kiel—R	Thomas Mason—R	Herbert McGregor—D	R. Bruce Sullivan—R	W. Bruce Jacobson—R	Julia J. Hamilton—R	W. F
35 Larimer	Fort Collins	Stanley A. Curtis—R	C. S. Ickes—R	W. Ed Wright—R	Ted Schaffer—R	Harry H. Hartman—R	G. R. Cushing—R	Kenr
36 Las Animas	Trinidad	Edward G. Hower—D	Forrest E. Dunlavy—D	Isaac Sandoval—D	Ray Marty—D	William T. Eckhart—D	Nick Bisulco—D	Mauy
37 Lincoln	Hugo	John Abell—D	Orville C. Meink—R	Guy W. Hicks—R	Merlin H. Koerner—R	C. M. Somerville—D	Mrs. Jewell Nell Mohan—D	R. J.
38 Logan	Sterling	Harley Beery—D	W. F. Alexander—D	J. Howard Berkstresser—R	Ray R. Powell—D	Roy T. Johnson—R	Marguerite Griffith—R	Josep
39 Mesa	Grand Junction	C. B. Pond—R	Burrell C. Reynolds—D	R. T. Ellington—D	Charles S. Lumley—R	Adair J. Hotchkiss—D	Miss Gladys Moss—D	Mrs.
40 Mineral	Creede	E. T. Barnhart—D	Wm. T. Jackson—R	John J. Weaver—D	E. J. Dabney—D	Willard I. Caton—R	Willard I. Caton—R	Wm.
41 Moffat	Craig	E. D. Davis—D	Russell H. Coles—R	W. O. Miner—D	George Krieger—R	J. W. Self—R	J. W. Self—R	Ralp
42 Montezuma	Cortez	Henry Thorpe—D	Claude H. Wilson—D	J. C. Rumburg—R	Ray Smith—D	C. R. Hickman—D	Mrs. Katie Brumley—R	C. R
43 Montrose	Montrose	Ira C. Foster—R	Frank E. Spencer—R	W. G. Haney—D	Frank L. Hovey—D	Earl J. Herman—D	Mrs. Mildred Johnson—D	Clide
44 Morgan	Fort Morgan	Loyal C. Baker—R	Edw. H. Madison—R	Lewis E. Wilson—R	Rufus A. Johnston—D	A. W. Dulweber—D	Mary Terriere—D	Hugh
45 Otero	La Junta	Frank Hamer—D	Edw. T. Oberling—R	Art W. Black—R	John H. Armstrong—D	Earl W. Haskins—R	Miss Leah M. Ryder—R	Ruth
46 Ouray	Ouray	Mrs. Eva K. Moule—R	Harry E. Stark—D	Patricio Stealey—D	Jess M. Wood—D	Edward Jelsma—D	Edward Jelsma—D	Marg
47 Park	Fairplay	H. C. Moyer—R	Glen A. Young—D	James T. Witcher—D	S. H. Law—R	Clarence S. Bullock—R	Clarence S. Bullock—R	Mrs.
48 Phillips	Holyoke	Mrs. Emma S. Kramer—D	Ray E. Crosby—R	B. A. Stephenson—R	H. M. Clements—R	Leon Kepler—R	Leon Kepler—R	Geor
49 Pitkin	Aspen	M. M. Neihardt—R	Robert S. Killey—D	Chas. D. Hart—R	Frank Bruin—D	Wm. R. Shaw—R	Miss Louise M. Berg—R	Fran
50 Prowers	Lamar	W. S. Morris—R	Delmas M. Martin—D	W. C. Wilson—D	W. C. McGuin—R	E. R. Jones—R	E. R. Jones—R	Miss
51 Pueblo	Pueblo	A. G. Koehenberger—D	J. E. Creel—D	Sam P. McCoun—D	Lewis Worker—R	Hubert Glover—D	Ray L. Hayes—D	J. R.
52 Rio Blanco	Meeker	J. W. C. Shepherd—D	Geo. E. Aicher—D	F. W. Hossack—R	Chester I. Mead—R	John E. Wix—R	John E. Wix—R	Robe
53 Rio Grande	Del Norte	Ira H. Mitchener—D	Mrs. Norma Z. Statton—R	E. E. Goodding—D	Clyde D. Phillips—D	Manlius T. Hancock—D	Lee A. Ruark—D	Anto
54 Routt	Steamboat Springs	John D. Crawford—D	Thomas W. Poulson—D	Eugene Steele—D	Fred Foster—R	John W. Cole—D	John W. Cole—D	M. M
55 Saguache	Saguache	W. E. Whitten—R	W. L. Hammond—D	Clifford Burnham—R	Ed Paul—R	Birt Clare—D	Birt Clare—D	Fay
56 San Juan	Silverton	Mrs. Helen A. Thompson—R	Mrs. Ida L. Grimes—R	Norman F. Bowden—D	Fred Patterson—D	Wm. Palmquist—D	Wm. Palmquist—D	Joe
57 San Miguel	Telluride	Mrs. Wilma L. Piele—D	Harold C. Ballard—D	Everett Vernon—D	L. G. Warrick—R	H. E. Dill—D	H. E. Dill—D	Miss
58 Sedgwick	Julesburg	Foster Parker—D	Frank L. Alexander—R	L. J. Bennett—R	Glenn Goddard—R	B. D. Parker, Jr.—R	Mrs. Mabel Cavender—R	Mrs.
59 Summit	Breckenridge	Hugh E. Smith—R	Frank F. Brown—R	Edward T. Stuard—D	C. P. Enyeart—R	M. J. Waltz—R	M. J. Waltz—R	Meli
60 Teller	Cripple Creek	Mrs. Mamie Wells—D	M. W. Kessey—D	Miss Blanche A. Cassady—D	Cecil A. Markley—D	John H. White—R	John H. White—R	Mrs.
61 Washington	Akron	H. G. Potter—R	Delman A. Yackle—R	H. H. Holt—R	S. B. Lewis—R	James G. Holsclaw—R	Mrs. Blanche D. Avery—R	Mrs.
62 Weld	Greeley	Louis Spomer—R	Harvey E. Witwer—R	C. M. Whiteside—R	Gus G. Anderson—R	Benj. A. Woodcock—D	Ross Shaklee—D	Albe
63 Yuma	Wray	Ray F. Morgan—D	Robert L. Sheverbush—D	B. H. Yount—D	Raymond Van Horn—D	Buffer Roberts—R	Buffer Roberts—R	Esth

COUNTY OFFICERS—STATE OF COLORADO

JUDGE	CLERK COUNTY COURT	CLERK DISTRICT COURT	SURVEYOR	SUPT. OF SCHOOLS	CORONER	COUNTY COMMISSIONERS			
on—D	Margaret McGuire—D	Howard H. Griffin—D	G. T. Mullings—D	Grace S. Miller—D	A. T. Allen—R	Geo. S. Kemp—R	Frank Larson—R	Harry C. Flanders—R	1
ick—R	Mrs. Chloe Stubbs—R	Mrs. Alice E. Burnham—R	Mrs. Mary H. Peterson—R	Mabel McL. O'Laughlin—D	John Allardice—D	Shrive B. Collins—D	John A. Meehan—D	R. C. Mullings—D	2
iller—D	J. T. Robertson—D	John M. Haynes—D	John W. Black—R	Mrs. Lena Archuleta—R	Jay M. Hatfield—R	Hugh W. Graham, Jr.—R	C. D. Courtright—D	Wm. C. Giggall—R	3
—R	J. T. Martinez—R	Fred Catchpole—D	T. B. Nossaman—D	Joe B. Perkins—D	Dr. J. G. McKinley—R	Dailey Hoti—D	John R. Stevens—D	Harmon T. Clark—D	4
—D	Mrs. W. R. Randall—D	Henry O. Green—D	D. E. Heizer—R	Hazel L. Martin—R	Dr. G. A. Duffy—R	C. L. Bosley—D	W. A. Hamilton—R	J. C. Lent—R	5
ey—D	Herman A. Bailey—D	Wm. A. Bush—D	J. E. Byron—R	Chas. E. Davis—R	Geo. W. Powell—R	O. L. Robinson—R	C. E. Everhart—R	M. L. Earl—R	6
k—R	Lynn R. McIntosh—R	C. W. Atkinson—R	E. Carter Hutchinson	Bessie M. Shewalter—D	Geo. W. Howe—R	Elmer Hetzer—D	Joe Carlson—D	Elmer Autrey—R	7
n—D	Arthur E. Smith—R	Arthur E. Smith—R	D. H. Zack—R	Mrs. Jeanette Baughman—R	J. E. Stewart—D	Ben Behrman—D	John Mundlein—D	T. E. O'Haver—R	8
on—R	Miss Mattie Trimble—R	H. C. Nelson—R	Chas. L. Harrington—D	Vida Seaton Cannady—R	Emil K. Keyser—R	Elmer Pearson—R	Fred Hadley—R	C. F. Kibbee—R	9
y—D	George D. Criley—D	John W. Old—D	A. H. Martin—D	Gaspar Garcia—R	Dr. Freeman D. Fowler—R	Wm. F. Buckley—D	George H. Curnow—R	Tony Anderson—D	10
—D	Mary Galvez—D	J. L. Mott—R	J. L. Tucker—R	Belinda S. Carpenter—R	Earl Haynie—D	Severiano Ortiz—R	W. Fred Haynie—D	Juan I. Medina—R	11
—D	Miss Linda M. Galavan—D	Frank Mondragon—R	A. B. Hunsicker—R	N. E. Nordby—R	Dr. R. C. Diaz—R	Joe Aragon—D	Felix Garcia—R	W. S. Parrish, Sr.—D	12
zents—R	Edward L. Mott—R	Dennis J. Mooney—D	A. K. Vickery—R	Mrs. Georgianna Kettle—R	J. E. Jeffery—R	B. H. Schwab—R	B. Q. Norris—R	E. G. Clatworthy—R	13
—D	Arthur A. Clements—R	Edward L. Mott—R	Mrs. Martha Savage—D	Angela G. Herstrom—R	Charles A. Menzel—R	H. E. Schwab—R	Clyde Sheffield—R	Ray O. Adams—R	14
—D	George E. Hicks—D	Gus Schlapp—D	Angela G. Herstrom—R	Miss M. Anna Engel—R	A. R. McCormick—R	H. S. Wood—R	Ed H. Crawford—D	W. F. Blaine—R	15
ett—D	Edgar S. Triplett—R	F. W. Sanborn	Miss Kathleen O'Rourke—D	Grace L. Lamb—R	Cahl Ph. Schwab	Harold N. Webster	George E. Cramner	R. E. Wilson	16
Ethel—D	Mrs. Mabel A. Ethel—D	O. P. Weston—D	Miss Fra. Foushee—R	H. H. Hadley—D	C. M. Engel—R	Edward Bear—D	Roy West—R	Wade A. Redford—D	17
—D	R. D. Hart—R	Charles S. Merrill—R	Joseph W. Stoner—R	H. H. Hadley—D	C. Douglas Andrews—D	C. H. Lowell—R	Frank Dakan—R	H. H. Bean—R	18
—D	Harry A. Thompson—D	Harry Anderson—R	George M. Heinsen—D	W. E. Scott, Jr.—D	Paul Andre—R	H. A. Nottingham—D	Wayne T. Jones—R	Alfred M. Sloss—D	19
ason—R	Florence Gerlach—R	Miss Lois A. Brenner—D	W. E. Scott, Jr.—D	Frank I. Huntington—R	Dale O. Groves—R	Dewey Carnahan—D	E. F. Ager—R	R. W. Lambert—R	20
ght—D	William A. Mason—R	Jonathan Seaman—R	W. E. Scott, Jr.—D	F. R. LaPlante—R	Lawrence O. Haney—D	Emmett R. Knight—D	Chas. N. Ellis—R	J. Z. McCullough—D	21
l—R	James M. Seright—R	N. D. Smith—R	W. E. Scott, Jr.—D	B. N. Ramsey—D	Dr. W. T. Little—R	William R. Griffiths—R	Frank Zavislan—D	Finis Parks—R	22
—D	J. N. Pettingell—R	J. W. Leidinger—D	W. E. Scott, Jr.—D	James H. P. Fisk—R	J. I. Burdge—R	Kenneth A. Baillie—R	Harry A. Smith—R	Sig. Olsen—R	23
—D	Betty Saunders—D	Brice Sheriff—D	W. E. Scott, Jr.—D	Frank DeLynden—D	D. H. Montgomery—R	A. M. Fairchild—D	George McLaughlin—D	W. T. Sterling—R	24
on—D	John R. Liska—D	Mrs. Bessie Wolfe—R	W. E. Scott, Jr.—D	David H. M. Strong—R	D. I. Cox—R	Amos W. Horn—R	James E. Quinn—D	George H. Dean—R	25
a—D	Aloysius Sanchez—D	H. G. Heath—D	W. E. Scott, Jr.—D	O. A. Olson—R	Alex Campbell—D	B. H. Jorgensen—D	H. L. Corder—D	W. H. Whalen—D	26
h—R	J. A. McNamara—D	Charles Haines—D	W. E. Scott, Jr.—D	Fred J. McNair—D	A. P. Griffiths—D	Ivan O. Vickers—D	E. M. Bowers—D	Jas. Davies, Jr.—D	27
k—R	A. T. Maserang—R	A. G. Maine—R	W. E. Scott, Jr.—D	Lucy E. Cramer—R	Dan Unfug—R	Sabino Archuleta—D	Ben Pascoe—D	Ben Pascoe—D	28
—R	George B. Black—R	Reuben B. Rittgers—D	W. E. Scott, Jr.—D	Marguerite Juchem—R	Dr. C. M. Morgan—R	William Simpson—R	John A. Peterson—R	C. M. Johnson—D	29
—R	E. M. Short—R	Mrs. Mabel Boger—R	W. E. Scott, Jr.—D	H. B. Amyx—D	O. A. Saunders—R	James G. Biggins, Jr.—R	Geo. S. Green—R	M. P. Cloonan—R	30
—R	Charles H. Schlaepfer—R	Margaret A. Schraeder—R	W. E. Scott, Jr.—D	Mrs. Virginia E. Felch—R	Harold Barnes—D	E. T. Hawthorne—R	P. L. Reed—R	Geo. Deviny—R	31
son—R	Julia J. Hamilton—R	W. E. Buchanan—D	W. E. Scott, Jr.—D	Lucy E. Cramer—R	Dr. M. E. Robinson—R	Harley Rhoades—R	Tom Kennedy—R	G. M. Baxter—R	32
man—R	G. R. Cushing—R	Kenneth A. Johnson—D	W. E. Scott, Jr.—D	Korleen Davies Mason—D	James J. Corbett—D	George F. Burke—D	Charles W. Sundquist—R	W. C. Pierce—D	33
art—D	Nick Bisulco—D	Maupin Woodson—D	W. E. Scott, Jr.—D	Mrs. Florence Irwin—R	Irwin Maxwell	D. W. Sexton—R	Peter Scott—R	W. I. Gifford—R	34
ie—D	Mrs. Jewell Nail Mohan—D	R. J. Barngrover	W. E. Scott, Jr.—D	William H. Haxby—D	Kendall Hammond—R	Ernest A. Fischer—R	John G. Nesbit—R	Robert C. Benson—R	35
n—R	Marguerite Griffith—R	Joseph A. Davis—R	W. E. Scott, Jr.—D	Eddy Webb—R	Edward Toupal—D	Arthur Winter—R	Harry Pople—R	William F. Robinson—D	36
kiss—D	Miss Gladys Moss—D	Mrs. Lucy E. Hogan—D	W. E. Scott, Jr.—D	Miss Faith Taylor—R	Velman Seal—R	T. H. McCallum—R	Oscar V. Hillenkamp—D	P. E. Miller—D	37
n—R	Willard I. Caton—R	Wm. T. Jackson—R	W. E. Scott, Jr.—D	Mrs. Sadie E. Hogsett—D	A. D. Jackson—R	T. E. Breezely—R	T. J. Crichton—R	Tom F. Moore—D	38
—D	J. W. Self—R	Ralph L. White—D	W. E. Scott, Jr.—D	Lucien Freedle—R	T. W. Gardner—R	H. Grady Puett—D	Oscar C. Mayne—D	Wm. F. Perkins—D	39
—D	Mrs. Katie Brumley—R	C. R. Hickman—D	W. E. Scott, Jr.—D	Viola Rudd—D	C. Stanley Parker—R	E. C. Hosselkus—D	W. Wallace Wright—D	W. J. Russell—D	40
—D	Mrs. Mildred Johnson—D	Clide N. McClean—R	W. E. Scott, Jr.—D	Mrs. Lotta W. Manauagh—R	I. J. Robacker—D	Waller Barnes—D	Van A. James—R	C. C. Dolan—D	41
as—R	Mary Terriere—R	Hugh R. Smith—R	W. E. Scott, Jr.—D	Mrs. Helen W. Brown—D	J. W. Ertel—R	Harry Rogers—R	Ira Kelly—R	S. G. Walker—D	42
—R	Miss Leah M. Ryder—R	Ruth W. Wallis—D	W. E. Scott, Jr.—D	Rose B. Glassey—D	Isaiah Knott—D	Clyde Porter—D	Neis Jacobson—R	Fred Sullivan—R	43
lock—R	Edward Jelsma—D	Marguerite MacLennan—R	W. E. Scott, Jr.—D	William H. Hogsett—R	E. H. Robinson—R	Scott Crook—R	W. J. Murchy—R	Whitford H. Gill—R	44
—R	Clarence S. Bullock—R	Mrs. Ethel J. Willmarth—R	W. E. Scott, Jr.—D	Cora A. Orendorf—R	Carl M. Ustick—R	E. A. McLothlin—R	Albert D. Miller—R	Frank Ritchie—R	45
—R	Leon Kepler—R	George A. Barker—R	W. E. Scott, Jr.—D	Miss Lois M. Morey—R	Leo Flor—D	Wm. McCullough—D	G. U. Brown—D	Buel H. Adams—R	46
—R	Miss Louise M. Berg	Frances Willoughby—R	W. E. Scott, Jr.—D	Gladys Hofmeister—R	Dr. John A. Pollice—R	D. F. Sagehorn—R	Claude L. Logue—R	W. C. Lewis—R	47
—R	E. R. Jones—R	Miss Madge L. Creaghe—D	W. E. Scott, Jr.—D	Mrs. Lettie Lee Brand—D	H. B. Radford—D	George W. Smith—D	Arthur Falk—R	John T. Anderson—R	48
—R	Ray L. Hayes—D	J. R. Botleman—D	W. E. Scott, Jr.—D	Mrs. Bernice Wilmoth—R	T. J. Sardy—D	William N. Wilson—R	Orest A. Gerbaz—D	Boyd R. King—D	49
—R	John E. Wix—R	Robert D. White—R	W. E. Scott, Jr.—D	Mrs. Nettie S. Freed—R	Dr. C. T. Knuckey—R	J. W. Goss—D	W. H. Straney—R	W. M. Turpin—R	50
—R	Lee A. Ruark—D	Antonio J. N. Valdez—R	W. E. Scott, Jr.—D	Mrs. Josephine Holland—D	Dr. C. N. Caldwell—D	Thomas Franks—R	Pete Hughes—D	John E. Hill—D	51
—R	John W. Cole—D	M. M. Burch—D	W. E. Scott, Jr.—D	Mrs. Ruth M. Mathias—R	Mrs. Edna Colescott—D	George F. Millikin—D	James Cordes—D	Hugh L. Caldwell—R	52
—R	Birt Clare—D	Fay Fennell—R	W. E. Scott, Jr.—D	Stanley Dismuke—D	Mrs. Myrtle C. Woods—R	Claude A. Luekens—D	Ralph Off—R	Russell S. Loser—D	53
—R	Wm. Palmquist—D	Joe Dresback—D	W. E. Scott, Jr.—D	Adrian Proffitt	A. W. Heyer—D	George H. Curtis—R	Joseph F. Long—D	Henry J. Summer—D	54
—R	H. E. Dill—D	Miss Alice N. Lindgren—D	W. E. Scott, Jr.—D	Julian Lee Hayes—R	Howard Burruss—R	C. W. Fleming—R	W. E. Gardner—D	Earl E. Wilson—R	55
—R	Mrs. Mabel Cavender—R	Mrs. Etta M. Gibson—R	W. E. Scott, Jr.—D	John Foster—D	Wm. E. Maguire—D	W. I. Wilson—D	John Glanville—R	Louis Dalla—R	56
—R	M. J. Waltz—R	Melissa H. Hayden—R	W. E. Scott, Jr.—D	Chas. M. Slusser—R	Dr. J. J. Parker—D	G. H. Austin—D	Wm. Finnegan—D	Alva Adams—R	57
—R	John H. White—R	Mrs. K. C. Gustin	W. E. Scott, Jr.—D	Edward A. Carlson, Jr.—R	Dr. F. J. Hilderman—R	N. C. Miller—D	Martin C. Sorensen—D	J. F. Lunsford—R	58
—R	Mrs. Blanche D. Avery—R	Mrs. Minnie Blausner—R	W. E. Scott, Jr.—D	Malcolm E. Burns—D	L. C. Owens—D	A. C. Coulson—R	Earl W. Rice—D	Charles Bradley—D	59
—R	Ross Shaklee—D	Albert Luther—R	W. E. Scott, Jr.—D	E. E. Hickman—R	A. C. Denman—D	V. E. Beck—R	Jim Wild—D	W. B. Moore—D	60
—R	Buffer Roberts—R	Esther Cassin—R	W. E. Scott, Jr.—D	L. L. Stimson—R	Harvey Benjamin—R	Fred Ford—D	Otto Muchow—R	Oscar E. Higginson—R	61
			W. E. Scott, Jr.—D	W. B. Coston—D	T. C. Wilmoth—D	W. A. Thompson—R	Harley Warren—R	Noble S. Sanden—R	62
					Paul Morris—R		Frank D. Catchpole—R	Henry D. Witte—R	63

