

STATE OF COLORADO

# Abstract of Votes Cast

AT THE

## Primary Election

Held on the Twelfth Day of September,  
A. D. 1916

AND AT THE

## General Election

Held on the Seventh Day of November,  
A. D. 1916

FOR

Presidential Electors, Congressmen, and State,  
Legislative and District Officers

ALSO THE

Proposed Constitutional Amendments  
Initiated and Referred Bills

COMPILED FROM OFFICIAL RETURNS

BY

JAMES R. NOLAND  
Secretary of State

1916



DENVER, COLORADO  
THE C. F. HOECKEL BLANK BOOK AND LITHOGRAPHING CO.  
1916

ABSTRACT OF VOTES CAST AT

FOR DISTRICT ATTORNEY FIRST JUDICIAL DISTRICT

COUNTIES	Flor Ashbaugh (Rep.)	Arthur D. Quaintance (Rep.)	John C. Vivian (Rep.)	Samuel W. Johnson (Dem.)
Adams .....	59	108	178	780
Arapahoe .....	992	163	176	597
Clear Creek .....	144	119	121	332
Gilpin .....	220	49	61	185
Grand .....	77	50	26	115
Jefferson .....	253	788	904	457
	1,745	1,277	1,466	2,466

Scattering, 3 Candidates. Total, 4 Votes.

Ashbaugh over Vivian, 279.

FOR DISTRICT ATTORNEY SECOND JUDICIAL DISTRICT  
(Denver County)

John W. Gillespie, Republican .....	6,921
Horace G. Benson, Republican .....	4,352
Louis J. Stark, Republican .....	2,728
David J. Davies, Republican .....	3,577
Phillip Hornbein, Democrat .....	3,867
William E. Foley, Democrat .....	5,347

Scattering, 1 Candidate. Total, 1 Vote.

Gillespie over Benson .....

Foley over Hornbein .....

**FOR DISTRICT ATTORNEY THIRD JUDICIAL DISTRICT**

COUNTIES	Joseph W. Hawley (Rep.)	George H. Blickhahn (Rep.)	Allen M. Lambright (Dem.)
Baca .....	201	138	331
Bent .....	191	46	265
Huerfano .....	151	1,201	284
Las Animas .....	2,476	752	673
Prowers .....	401	269	295
	<hr/>	<hr/>	<hr/>
	3,420	2,406	1,848

Scattering, 1 Candidate. Total, 1 Vote.

Hawley over Blickhahn, 1,014.

**FOR DISTRICT ATTORNEY FOURTH JUDICIAL DISTRICT**

COUNTIES	Willis L. Strachan (Rep.)	Michael W. Purcell (Dem.)	Willis L. Strachan (Prog.)
Cheyenne .....	438	301	.....
Douglas .....	158	111	.....
Elbert .....	164	209	.....
El Paso .....	4,080	886	42
Kit Carson .....	602	391	.....
Lincoln .....	748	625	.....
Teller .....	835	1,382	.....
	<hr/>	<hr/>	<hr/>
	7,020	3,905	42

Scattering, 11 Candidates. Total, 49 Votes.

## ABSTRACT OF VOTES CAST AT

## FOR DISTRICT ATTORNEY FIFTH JUDICIAL DISTRICT

COUNTIES	Michael F. Ryan (Rep.)	Quentin D. Bonner (Dem.)	Barney L. Whatley (Dem.)	Frank E. Purple (Dem.)
Eagle .....	346	216	275	25
Lake .....	881	530	648	139
Summit .....	95	190	198	20
	<hr/>	<hr/>	<hr/>	<hr/>
	1,322	936	1,121	184

Scattering, 1 Candidate. Total, 1 Vote.

Whatley over Bonner, 185.

## FOR DISTRICT ATTORNEY SIXTH JUDICIAL DISTRICT

COUNTIES	Alonzo M. Emigh (Rep.)	Frederick C. Perkins (Rep.)	George W. Lane (Dem.)	John J. Downey (Dem.)
Archuleta .....	349	35	203	83
Dolores .....	2	4	93	111
La Plata .....	180	250	600	495
Montezuma .....	104	112	345	527
San Juan .....	55	56	84	45
	<hr/>	<hr/>	<hr/>	<hr/>
	690	457	1,325	1,266
Emigh over Perkins.....				233
Lane over Downey.....				59

**FOR DISTRICT ATTORNEY SEVENTH JUDICIAL DISTRICT**

COUNTIES	John L. Silvers (Rep.)	William Weiser (Dem.)
Delta .....	1,272	496
Gunnison .....	328	347
Hinsdale .....	48	97
Mesa .....	1,300	746
Montrose .....	620	696
Ouray .....	212	428
San Miguel .....	267	313
	4,047	3,123

Scattering, 2 Candidates. Total, 3 Votes.

**FOR DISTRICT ATTORNEY EIGHTH JUDICIAL DISTRICT**

COUNTY	Fancher Sarchet (Rep.)	Victor E. Keyes (Rep.)	Russell W. Fleming (Dem.)	Ledru R. Rhodes (Dem.)
Boulder .....	1,020	1,352	1,762	479
Jackson .....	58	36	22	7
Larimer .....	1,574	525	489	166
Weld .....	881	3,293	862	267
	3,533	5,206	3,135	919

Scattering, 1 Candidate. Total, 7 Votes.

Keyes over Sarchet.....	1,673
Rhodes over Fleming.....	2,216

## ABSTRACT OF VOTES CAST AT

## FOR DISTRICT ATTORNEY NINTH JUDICIAL DISTRICT

COUNTY	John L. Noonan (Rep.)	Frank Delaney (Dem.)	Edwin C. Kingsbury (Dem.)
Garfield .....	771	840	442
Moffat .....	268	235	51
Pitkin .....	84	368	226
Rio Blanco .....	127	277	13
Routt .....	557	393	124
	<hr/>	<hr/>	<hr/>
	1,807	2,113	856

Delaney over Kingsbury, 1,257.

## FOR DISTRICT ATTORNEY TENTH JUDICIAL DISTRICT

COUNTY	Charles M. Rose (Rep.)	Charles B. Hughes (Dem.)
Crowley .....	513	434
Kiowa .....	139	388
Otero .....	781	344
Pueblo .....	2,654	3,149
	<hr/>	<hr/>
	4,087	4,315

**FOR DISTRICT ATTORNEY ELEVENTH JUDICIAL DISTRICT**

COUNTIES	Gilbert A. Walker (Rep.)	T. Lee Witcher (Dem.)
Chaffee .....	529	437
Custer .....	85	159
Fremont .....	855	430
Park .....	118	206
	1,587	1,232

Scattering, 3 Candidates. Total, 3 Votes.

**FOR DISTRICT ATTORNEY TWELFTH JUDICIAL DISTRICT**

COUNTIES	John I. Palmer (Rep.)	W. Scott Carroll (Rep.)	James F. Veerkamp (Dem.)
Alamosa .....	218	40	166
Conejos .....	865	233	78
Costilla .....	314	48	438
Mineral .....	121	52	43
Rio Grande .....	338	352	139
Saguache .....	232	100	292
	2,088	825	1,156

Palmer over Carroll, 1,263.

## ABSTRACT OF VOTES CAST AT

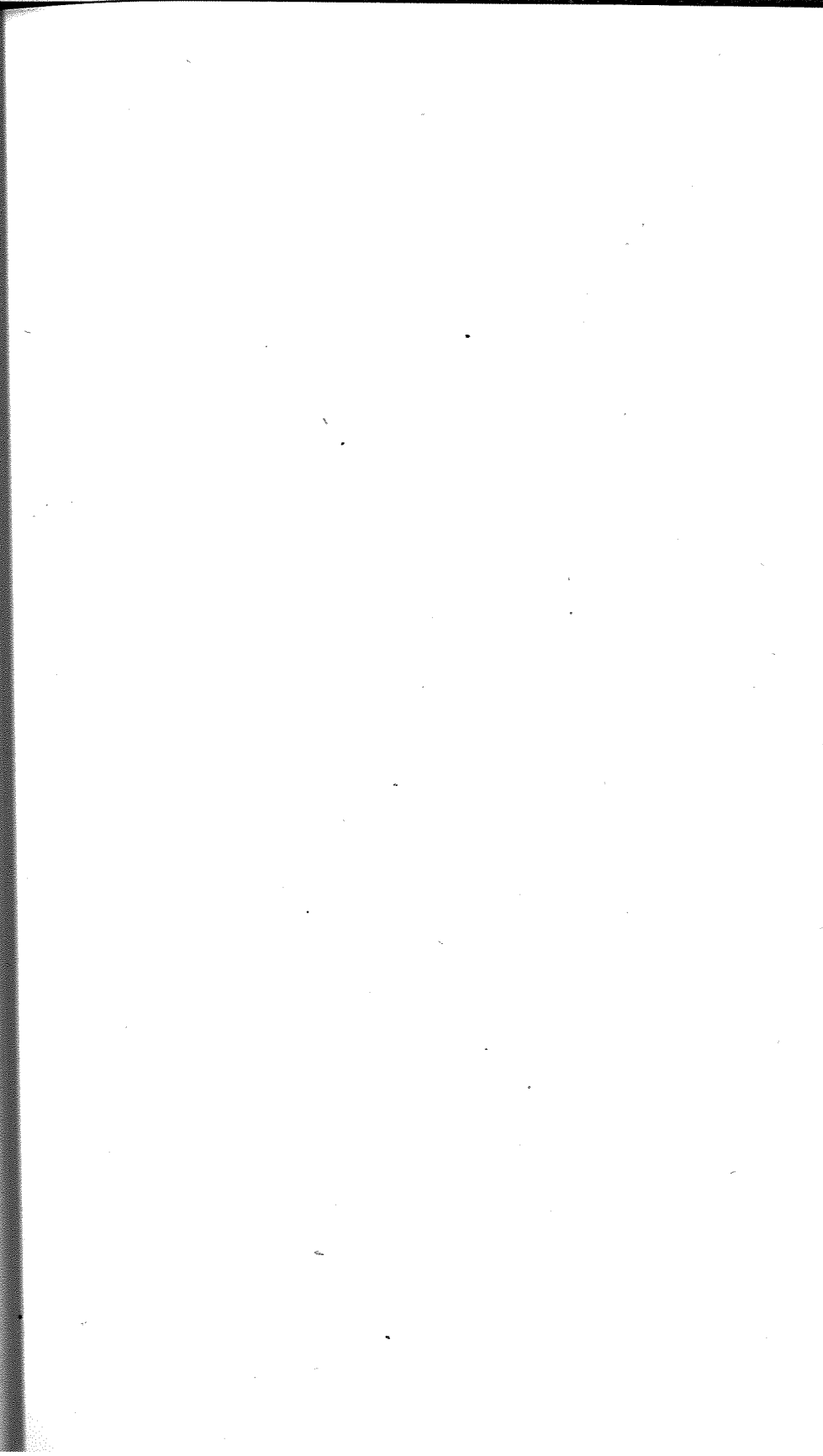
## FOR DISTRICT ATTORNEY THIRTEENTH JUDICIAL DISTRICT

COUNTIES	John R. Coen (Rep.)	Robert M. Work (Rep.)	Irving Van Bradt (Dem.)
Logan .....	634	425	410
Morgan .....	579	779	176
Phillips .....	130	193	123
Sedgwick .....	189	231	94
Washington .....	288	343	297
Yuma .....	199	360	410
	<hr/>	<hr/>	<hr/>
	2,019	2,331	1,510

Scattering, 6 Candidates. Total, 13 Votes.

Work over Coen, 312.





ABSTRACT OF VOTES CAST AT

FOR STATE SENATORS FROM THE FIRST  
SENATORIAL DISTRICT

City and County of Denver

William A. Carpenter, Republican.....	26,794
Marshall De Witt, Socialist.....	3,569
Edward V. Dunklee, Democrat.....	31,621
Morris Harrison, Liberal.....	802
Leon M. Hattenbach, Republican.....	28,228
Maurice M. Kern, Socialist.....	3,183
Houston H. Farris, Liberal.....	573
Peter E. Snow, Liberal.....	673
James C. Starkweather, Republican.....	29,720
John I. Tierney, Democrat.....	26,508
Fred Underhill, Socialist.....	3,405
John Red Williams, Democrat.....	24,910
Dunklee over Carpenter.....	4,827
Starweather over Carpenter.....	2,926
Hattenbach over Carpenter.....	1,434

FOR STATE SENATOR FROM THE SECOND  
SENATORIAL DISTRICT

COUNTY	Al S. Andrew (Rep.)	Perry C. Dunlap (Dem.)	Charles S. Tolman (Soc.)
Pueblo .....	6,370	7,656	2,181
	Dunlap over Andrew, 1,286		

**FOR STATE SENATOR FROM THE THIRD  
SENATORIAL DISTRICT**

COUNTY	C. A. Gore (Dem.)	A. E. Newman (Soc.)	L. A. Puffer (Rep.)
El Paso .....	5,843	850	8,384
	Puffer over Gore, 2,541		

**FOR STATE SENATOR FROM THE FOURTH  
SENATORIAL DISTRICT**

COUNTY	Casimiro Barela (Rep.)	Samuel W. DeBusk (Dem.)	Abraham Marians (Soc.)
Las Animas .....	3,972	4,373	210
	DeBusk over Barela, 401		

**FOR STATE SENATOR FROM THE FIFTH  
SENATORIAL DISTRICT**

COUNTY	Henry O. Andrew (Dem.)	Elbert Greenman (Colo.)	Howard B Millard (Rep.)	Edwin S. Agnew (Soc.)
Boulder .....	4,845	705	4,495	835
	Andrew over Millard, 350			

ABSTRACT OF VOTES CAST AT

FOR STATE SENATOR FROM THE SEVENTH SENATORIAL DISTRICT

COUNTY		D. P. Coldren (Dem.)		Robert E. Winbourn (Rep.)
Weld .....			6,721	6,356
	Coldren's majority 365.			

FOR STATE SENATOR FROM THE EIGHTH SENATORIAL DISTRICT

COUNTY		Wilbur F. Smith (Rep.)		Wesley Staley (Dem.)
Jefferson .....			2,178	3,016
	Staley's majority 838.			

FOR STATE SENATOR FROM THE NINTH SENATORIAL DISTRICT

COUNTY		George D. Cummings (Dem.)		Matt N. Lines (Rep.)	Paul W. Ross (Soc.)
Fremont .....			2,476	2,655	329
	Lines over Cummings, 179				

**FOR STATE SENATOR FROM THE ELEVENTH  
SENATORIAL DISTRICT**

COUNTIES	W. F. Dale (Rep.)	George Hetherington (Dem.)
Delta .....	1,991	2,088
Gunnison .....	1,071	1,168
	<hr/>	<hr/>
	3,062	3,256

Hetherington's majority 194

**FOR STATE SENATOR FROM THE THIRTEENTH  
SENATORIAL DISTRICT**

COUNTIES	Horace F. Mann (Rep.)	J. N. McWilliams (Dem.)
Jackson .....	166	283
Moffatt .....	755	469
Rio Blanco .....	488	595
Routt .....	937	1,775
	<hr/>	<hr/>
	2,346	3,122

McWilliams' majority 776

## ABSTRACT OF VOTES CAST AT

FOR STATE SENATOR FROM THE NINETEENTH  
SENATORIAL DISTRICT

COUNTIES	Rowe N. Pingrey (Rep.)	Geo. E. West (Dem.)
La Plata .....	1,645	1,911
Montezuma .....	691	1,094
	<hr/>	<hr/>
	2,336	3,005
West's majority 669		

FOR STATE SENATOR FROM THE TWENTY-FIRST  
SENATORIAL DISTRICT

COUNTIES	J. W. Deane (Rep.)	B. T. Napier (Dem.)
Eagle .....	456	1,016
Garfield .....	1,355	2,099
Pitkin .....	638	537
	<hr/>	<hr/>
	2,449	3,652
Napier's majority 1,203		

**FOR STATE SENATOR FROM THE TWENTY-SECOND  
SENATORIAL DISTRICT**

COUNTIES	Luke J. Kavanaugh (Dem.)	Agnes L. Riddle (Rep.)
Adams .....	1,462	1,510
Arapahoe .....	1,793	2,226
Morgan .....	1,642	2,093
	<hr/>	<hr/>
	4,897	5,829

Riddle's majority 932

**FOR STATE SENATOR FROM THE TWENTY-THIRD  
SENATORIAL DISTRICT**

COUNTIES	Thos. C. Coltman (Dem.)	Reuben C. Inge (Rep.)
Crowley .....	968	953
Otero .....	3,661	2,744
	<hr/>	<hr/>
	4,629	2,697

Coltman's majority 932

ABSTRACT OF VOTES CAST AT

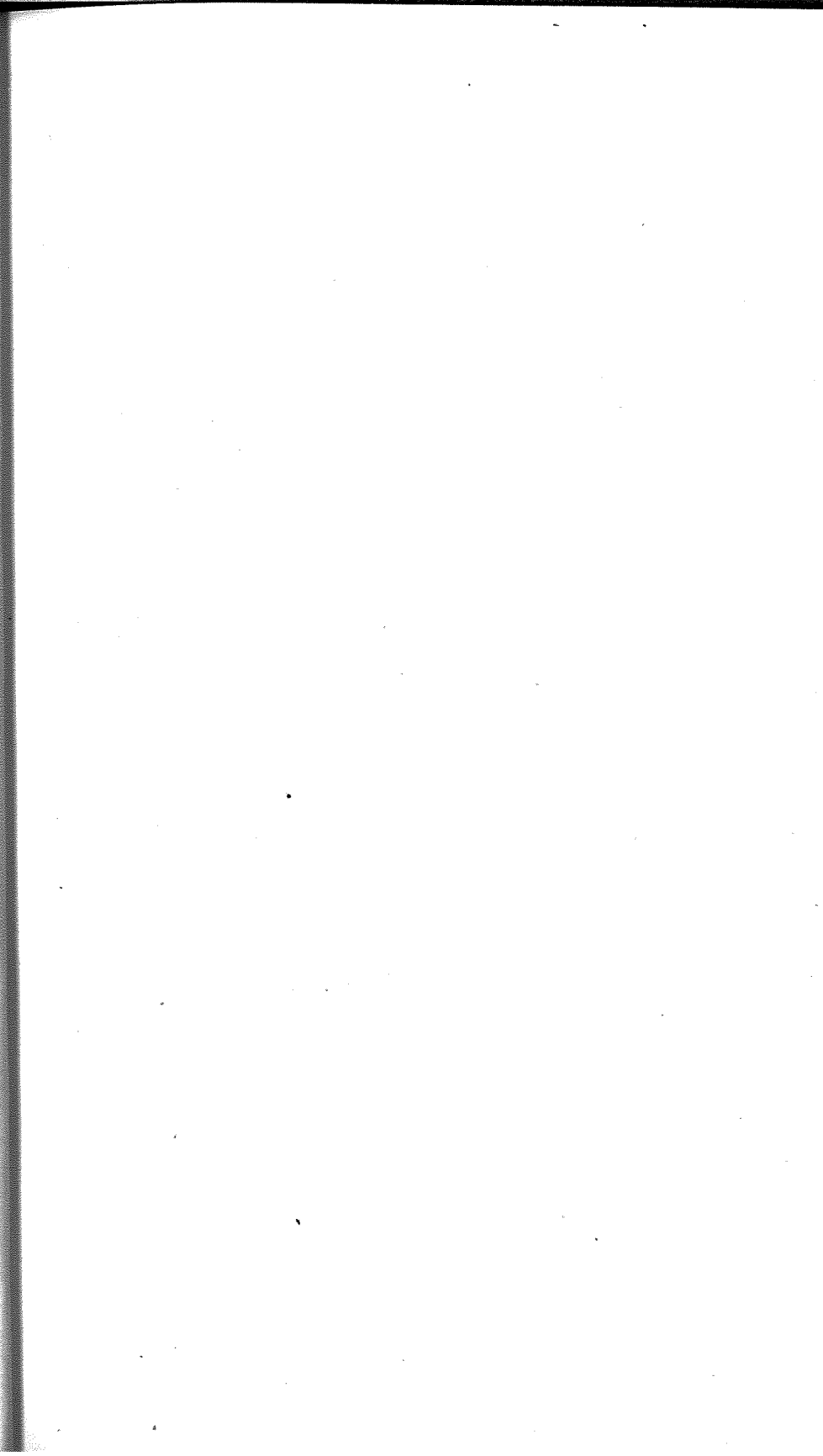
FOR STATE SENATOR FROM THE TWENTY-FOURTH  
SENATORIAL DISTRICT

COUNTIES	William H. Adams (Dem.)	Daniel E. Newcomb (Rep.)
Alamosa .....	1,216	540
Conejos .....	1,632	756
	<hr/> 2,848	<hr/> 1,296
Adams' majority 1,552		

FOR STATE SENATOR FROM THE TWENTY-SIXTH  
SENATORIAL DISTRICT

COUNTIES	Siewers Fincher (Dem.)	G. C. Stumm (Rep.)
Clear Creek .....	933	717
Gilpin .....	618	402
Grand .....	576	380
Summit .....	720	256
	<hr/> 2,847	<hr/> 1,755
Fincher's majority 1,092		





**FOR  
REPRESENTATIVES IN THE TWENTY-FIRST GENERAL ASSEMBLY  
FROM THE COUNTY OF ADAMS**

COUNTY	H. G. Emery (Dem.)	A. H. Kramer (Rep.)
Adams .....	1,425	1,528
Kramer's majority 103		

**FOR  
REPRESENTATIVES IN THE TWENTY-FIRST GENERAL ASSEMBLY  
FROM THE COUNTY OF ALAMOSA**

COUNTY	Robert M. Born (Dem.)	William R. Pyke (Rep.)
Alamosa .....	1,117	601
Born's majority 516		

**FOR  
REPRESENTATIVES IN THE TWENTY-FIRST GENERAL ASSEMBLY  
FROM THE COUNTIES OF ARAPAHOE AND ELBERT**

COUNTIES	S. J. Hanks (Rep.)	John Roth (Dem.)
Arapahoe .....	1,884	2,068
Elbert .....	1,044	978
	2,928	3,046
Roth's majority 118		

**FOR  
REPRESENTATIVES IN THE TWENTY-FIRST GENERAL ASSEMBLY  
FROM THE COUNTY OF BOULDER**

COUNTIES	Alphonse Pierre Ardourel (Dem.)	L. E. Girard (Rep.)	J. H. Golden (Dem.)	Mathew A. Rowen (Rep.)	E. G. Lawrence (Soc.)	John C. Thompson (Soc.)
Boulder .....	5,148	4,814	4,566	4,322	872	700
Ardourel over Golden.....					582	
Girard over Golden.....					248	

**FOR  
REPRESENTATIVES IN THE TWENTY-FIRST GENERAL ASSEMBLY  
FROM THE COUNTY OF CHAFFEE**

COUNTY	Wm. C. Alexander (Rep.)	A. E. Wright (Dem.)
Chaffee.....	1,300	1,977
Wright's majority 677		

**FOR  
REPRESENTATIVES IN THE TWENTY-FIRST GENERAL ASSEMBLY  
FROM THE COUNTY OF CLEAR CREEK**

COUNTY	Herman E. Crist (Rep.)	Don J. McDonald (Dem.)
Clear Creek .....	843	881
McDonald's majority 38		

**FOR  
REPRESENTATIVES IN THE TWENTY-FIRST GENERAL ASSEMBLY  
FROM THE COUNTIES OF CROWLEY AND OTERO**

COUNTIES	M. E. Bashor (Rep.)	E. G. Herzberger (Dem.)	R. H. Mueller (Rep.)	Floyd P. Roberts (Dem.)
Crowley .....	1,134	796	801	934
Otero .....	2,634	3,448	2,713	2,642
	3,768	4,244	3,514	3,576
Herzberger over Roberts.....				668
Bashor over Roberts.....				192

**FOR  
REPRESENTATIVES IN THE TWENTY-FIRST GENERAL ASSEMBLY  
FROM THE COUNTY OF CONEJOS**

COUNTY	Celestino Garcia (Rep.)	J. M. Velasquez (Dem.)
Conejos .....	1,428	1,138
	Garcia's majority 290	

**FOR  
REPRESENTATIVES IN THE TWENTY-FIRST GENERAL ASSEMBLY  
FROM THE COUNTY OF DELTA**

COUNTY	H. K. Ferguson (Dem.)	Robert F. Rockwell (Rep.)	W. H. Meek (Soc.)
Delta .....	1,954	2,096	433
	Rockwell over Ferguson, 142		

**FOR  
REPRESENTATIVES IN THE TWENTY-FIRST GENERAL ASSEMBLY  
FROM THE CITY AND COUNTY OF DENVER**

William Ackerman, Liberal .....	1,733
Frederick D. Anderson, Democrat.....	35,229
Thomas F. Azpell, Republican .....	26,701
Charles Baer, Republican .....	26,877
Edward B. Bartholic, Socialist.....	3,894
David W. Beechtel, Liberal.....	916
Josephh V. Benson, Republican.....	23,445
Morris Berkowitz, Socialist .....	3,696
Carroll M. Bills, Republican .....	27,443
George O. Brady, Socialist .....	3,640
Philip W. Brown, Socialist .....	3,811
Edmund Bruder, Liberal .....	867
William P. Byers, Liberal .....	1,140
William H. H. Cranmer, Republican.....	24,113
Clem F. Crowley, Democrat .....	30,799
Golding Fairfield, Republican .....	25,803
Harry G. Ferguson, Republican .....	21,274
James O. Garrett, Democrat .....	26,059
George M. Gilbert, Socialist .....	4,122
Robert Harris, Republican .....	27,052
Evangeline Heartz, Democrat.....	26,686
Albert Kiefer, Socialist .....	3,713
Albert H. Kirby, Socialist .....	3,321
William S. Kirby, Socialist .....	3,292
Charles T. Linton, Republican .....	26,894
Thomas F. Lynch, Liberal .....	1,230
John W. Maloney, Democrat .....	26,065
William H. B. Mason, Liberal.....	944
Arthur D. Meyer, Democrat .....	30,665
Harry McClintock, Liberal .....	1,008
Paul M. Nattermann, Liberal .....	696
John M. O'Brien, Democrat .....	25,292
William F. Pabst, Liberal.....	748
Theodore H. Proske, Democrat .....	28,736
Halsey M. Rhoads, Republican .....	22,081
Roy E. Roberts, Liberal .....	936
Edmund Rogers, Democrat .....	27,851
John Salmond, Liberal .....	754
Gudran Skiegstadt, Socialist .....	2,931

**FOR  
REPRESENTATIVES IN THE TWENTY-FIRST GENERAL ASSEMBLY  
FROM THE CITY AND COUNTY OF DENVER—Continued**

Thomas A. Smith, Socialist .....	3,363
Hugh R. Steele, Republican .....	27,680
Felix Thies, Liberal .....	2,137
Charles J. Vallero, Democrat .....	25,293
J. Earl Watson, Socialist .....	3,304
Jacob H. Weidman, Socialist .....	3,350
Robert Willison, Democrat .....	31,225
George P. Winters, Republican .....	26,788
George A. Yaeger, Democrat .....	26,147
Majority for Anderson over Azpell.....	8,528
Majority for Willison over Azpell.....	4,524
Majority for Crowley over Azpell.....	4,098
Majority for Meyers over Azpell.....	3,964
Majority for Proske over Azpell.....	2,035
Majority for Rogers over Azpell.....	1,150
Majority for Steele over Azpell.....	979
Majority for Bills over Azpell.....	742
Majority for Harris over Azpell.....	351
Majority for Linton over Azpell.....	193
Majority for Baer over Azpell.....	176
Majority for Winters over Azpell.....	87

**FOR  
REPRESENTATIVES IN THE TWENTY-FIRST GENERAL ASSEMBLY  
FROM THE COUNTY OF DOUGLAS**

<b>COUNTY</b>	
Douglas .....	684
Crosswhite's majority, 22	

Charles E. Crosswhite  
(Dem.)

Hugh Taylor  
(Rep.)

**PART OF REPORT OF ELECTION AND APPROPRIATION COMMITTEE  
WHICH WAS ADOPTED BY THE TWENTY-FIRST GENERAL  
ASSEMBLY, WEDNESDAY, JANUARY 17TH, 1917.**

STATE OF COLORADO,  
HOUSE OF REPRESENTATIVES.

Denver, Colorado, January 17, 1917.

Mr. Speaker: Your Committee on Elections and Appointments, to which was referred the matters relating to the contest of elections in the city and county of Denver, state of Colorado, wherein James O. Garrett, Evangeline Hertz, James W. Maloney, John M. O'Brien, Charles Vallero and George A. Yaeger were contestors and Charles Baer, Carroll M. Bills, Robert Harris, Charles F. Linton, Hugh R. Steele and George P. Winters were contestees, all of which said contestors and contestees were candidates for a seat in the Twenty-first General Assembly of the state of Colorado at the last general election held November 7, A. D. 1916, has counted all of the ballots cast for the said contestors and contestees at said election and finds from such count the following, to wit:

Hugh R. Steele received 27,845 votes.  
Carroll M. Bills received 27,697 votes.  
Robert Harris received 27,383 votes.  
Evangeline Hertz received 27,111 votes.  
Charles T. Linton received 27,101 votes.  
Charles Baer received 27,058 votes.  
George P. Winters received 26,900 votes.  
James O. Garrett received 26,719 votes.  
George A. Yaeger received 26,234 votes.  
John W. Maloney received 26,172 votes.  
Charles J. Vallero received 25,421 votes.  
John M. O'Brien received 25,401 votes.

From this said finding of votes cast, we recommend that the following named persons are entitled to seats in the House of Representatives of the Twenty-first General Assembly of the state of Colorado, and that the aforesaid contest be determined in their favor: Hugh R. Steele, Carroll M. Bills, Robert Harris, Evangeline Hertz, Charles F. Linton and Charles Baer.

ABSTRACT OF VOTES CAST AT

**FOR  
REPRESENTATIVES IN THE TWENTY-FIRST GENERAL ASSEMBLY  
FROM THE COUNTY OF EAGLE**

COUNTY	F. V. Burbank (Rep.)	Chas. Mayer (Dem.)
Eagle .....	713	814
Mayer's majority, 101		

**FOR  
REPRESENTATIVES IN THE TWENTY-FIRST GENERAL ASSEMBLY  
FROM THE COUNTY OF EL PASO**

L. M. Counts, Democrat .....	6,512
C. S. Gambrill, Democrat .....	6,631
Charles Mayhew, Socialist.....	990
Leslie W. Meyer, Democrat .....	5,538
Willis V. Sims, Republican-Progressive .....	7,272
Calvin B. Thompson, Socialist .....	869
F. E. Torbit, Republican-Progressive .....	7,283
A. M. Wilson, Republican-Progressive .....	7,789
Wilson over Gambrill .....	1,158
Torbit over Gambrill .....	652
Sims over Gambrill .....	641

**FOR  
REPRESENTATIVES IN THE TWENTY-FIRST GENERAL ASSEMBLY  
FROM THE COUNTY OF FREMONT**

COUNTY	George E. Colgate (Rep.)	Orion W. Locke (Dem.)	William C. Bloyed (Soc.)
Fremont .....	2,886	2,108	492
Colgate over Locke, 778.			



**FOR  
REPRESENTATIVES IN THE TWENTY-FIRST GENERAL ASSEMBLY  
FROM THE COUNTIES OF GARFIELD AND RIO BLANCO**

COUNTIES	Ernest Barlow (Dem.)	W. R. Lee (Rep.)
Garfield .....	1,788	1,473
Rio Blanco .....	533	535
	2,321	2,008

Barlow's majority, 313

**FOR  
REPRESENTATIVES IN THE TWENTY-FIRST GENERAL ASSEMBLY  
FROM THE COUNTY OF GILPIN**

COUNTY	William O. Jenkins (Dem.)	Robert Wilkinson (Rep.)
Gilpin .....	648	498

Jenkins' majority, 150

**FOR  
REPRESENTATIVES IN THE TWENTY-FIRST GENERAL ASSEMBLY  
FROM THE COUNTY OF GUNNISON**

COUNTY	Albert H. Good (Rep.)	T. J. Thompson (Dem.)
Gunnison .....	910	1,358

Thompson's majority, 448

**FOR  
 REPRESENTATIVES IN THE TWENTY-FIRST GENERAL ASSEMBLY  
 FROM THE COUNTIES OF HINSDALE, ARCHULETA AND MINERAL**

COUNTIES	W. E. Furrow (Dem.)	A. J. Nossaman (Rep.)
Hinsdale .....	150	115
Archuleta .....	657	563
Mineral .....	237	158
	1,044	836

Furrow's majority, 208

**FOR  
 REPRESENTATIVES IN THE TWENTY-FIRST GENERAL ASSEMBLY  
 FROM THE COUNTIES OF HUERFANO AND COSTILLA**

COUNTIES	Gaspar Gallegos (Dem.)	J. P. Gallegos (Rep.)
Huerfano .....	2,292	2,151
Costilla .....	1,054	746
	3,346	2,897

Gaspar Gallegos' majority, 449

**FOR  
REPRESENTATIVES IN THE TWENTY-FIRST GENERAL ASSEMBLY  
FROM THE COUNTY OF JEFFERSON**

COUNTY	Chas. E. Friend (Dem.)	John Grattan (Rep.)
Jefferson .....	2,725	2,337
Friend's majority, 388		

**FOR  
REPRESENTATIVES IN THE TWENTY-FIRST GENERAL ASSEMBLY  
FROM THE COUNTIES OF KIOWA AND BENT**

COUNTIES	Boon Best (Dem.)	A. T. Cherry (Rep.)
Kiowa .....	872	842
Bent .....	1,286	921
	2,158	1,763
Best's majority, 395		

**FOR  
REPRESENTATIVES IN THE TWENTY-FIRST GENERAL ASSEMBLY  
FROM THE COUNTY OF LAKE**

COUNTY	Fred L. Cretney (Rep.)	Ernest W. Owen (Dem.)
Lake .....	1,581	2,238
Owen's majority, 657		