

STATE OF COLORADO

# Abstract of Votes Cast

AT THE

## Primary Election

Held on the Twelfth Day of September,  
A. D. 1916

AND AT THE

## General Election

Held on the Seventh Day of November,  
A. D. 1916

FOR

Presidential Electors, Congressmen, and State,  
Legislative and District Officers

ALSO THE

Proposed Constitutional Amendments  
Initiated and Referred Bills

COMPILED FROM OFFICIAL RETURNS

BY

JAMES R. NOLAND  
Secretary of State

1916



DENVER, COLORADO  
THE C. F. HOECKEL BLANK BOOK AND LITHOGRAPHING CO.  
1916

ABSTRACT OF VOTES CAST AT  
FOR LIEUTENANT GOVERNOR

COUNTY	Moses E. Lewis (Rep.)	James A. Pulliam (Dem.)	Franklin E. Carringer (Dem.)
Adams .....	376	406	514
Alamosa .....	223	132	58
Arapahoe .....	994	286	379
Archuleta .....	209	227	43
Baca .....	354	237	118
Bent .....	220	158	104
Boulder .....	2,336	1,102	966
Chaffee .....	543	250	274
Cheyenne .....	473	179	126
Clear Creek .....	276	166	237
Conejos .....	624	69	17
Costilla .....	355	362	102
Crowley .....	572	241	218
Custer .....	87	74	82
Delta .....	1,352	316	211
Denver .....	14,718	3,380	4,571
Dolores .....	5	141	51
Douglas .....	168	69	48
Eagle .....	380	242	167
Elbert .....	183	125	121
El Paso .....	3,851	577	473
Fremont .....	1,006	204	243
Garfield .....	712	560	477
Gilpin .....	219	95	118
Grand .....	114	74	38
Gunnison .....	368	208	150
Hinsdale .....	45	83	16
Huerfano .....	1,193	168	128
Jackson .....	79	20	9
Jefferson .....	1,536	169	358
Kiowa .....	147	320	86

## FOR LIEUTENANT GOVERNOR—Continued

COUNTY	Moses E. Lewis (Rep.)	James A. Pulliam (Dem.)	Franklin E. Carringer (Dem.)
Kit Carson .....	654	265	162
Lake .....	924	326	601
La Plata .....	323	992	84
Larimer .....	1,784	279	304
Las Animas .....	2,645	397	356
Lincoln .....	796	400	269
Logan .....	853	379	175
Mesa .....	1,410	387	318
Mineral .....	128	28	21
Moffat .....	269	139	109
Montezuma .....	214	604	159
Montrose .....	656	387	337
Morgan .....	961	95	119
Otero .....	888	215	171
Ouray .....	215	247	219
Park .....	122	142	94
Phillips .....	253	80	57
Pitkin .....	90	274	204
Prowers .....	684	165	142
Pueblo .....	2,722	1,632	1,585
Rio Blanco .....	138	95	84
Rio Grande .....	512	90	41
Routt .....	597	262	211
Saguache .....	238	181	133
San Juan .....	94	89	24
San Miguel .....	298	228	156
Sedgwick .....	290	57	43
Summit .....	98	186	137
Teller .....	1,010	1,151	742
Washington .....	514	203	121

ABSTRACT OF VOTES CAST AT  
FOR LIEUTENANT GOVERNOR—Continued

COUNTY	Moses E. Lewis (Rep.)	James A. Pulliam (Dem.)	Franklin E. Carringer (Dem.)
Weld .....	3,516	571	577
Yuma .....	421	272	176
	58,040	21,458	18,434

Scattering, 6 Candidates. Total, 37 Votes.

Pulliam over Carringer, 3,024.



## ABSTRACT OF VOTES CAST AT

## FOR SECRETARY OF STATE

COUNTY	John E. Ramer (Rep.)	William F. Allen (Dem.)
Adams .....	361	713
Alamosa .....	223	176
Arapahoe .....	1,009	600
Archuleta .....	217	236
Baca .....	352	384
Bent .....	225	237
Boulder .....	2,356	1,885
Chaffee .....	544	465
Cheyenne .....	482	308
Clear Creek .....	274	327
Conejos .....	650	89
Costilla .....	363	426
Crowley .....	547	441
Custer .....	90	141
Delta .....	1,564	512
Denver .....	14,515	7,190
Dolores .....	6	136
Douglas .....	166	115
Eagle .....	379	399
Elbert .....	178	219
El Paso .....	3,733	1,007
Fremont .....	905	422
Garfield .....	704	998
Gilpin .....	213	177
Grand .....	114	110
Gunnison .....	378	345
Hinsdale .....	44	85
Huerfano .....	1,180	277
Jackson .....	97	29
Jefferson .....	1,515	384
Kiowa .....	152	371

## FOR SECRETARY OF STATE—Continued

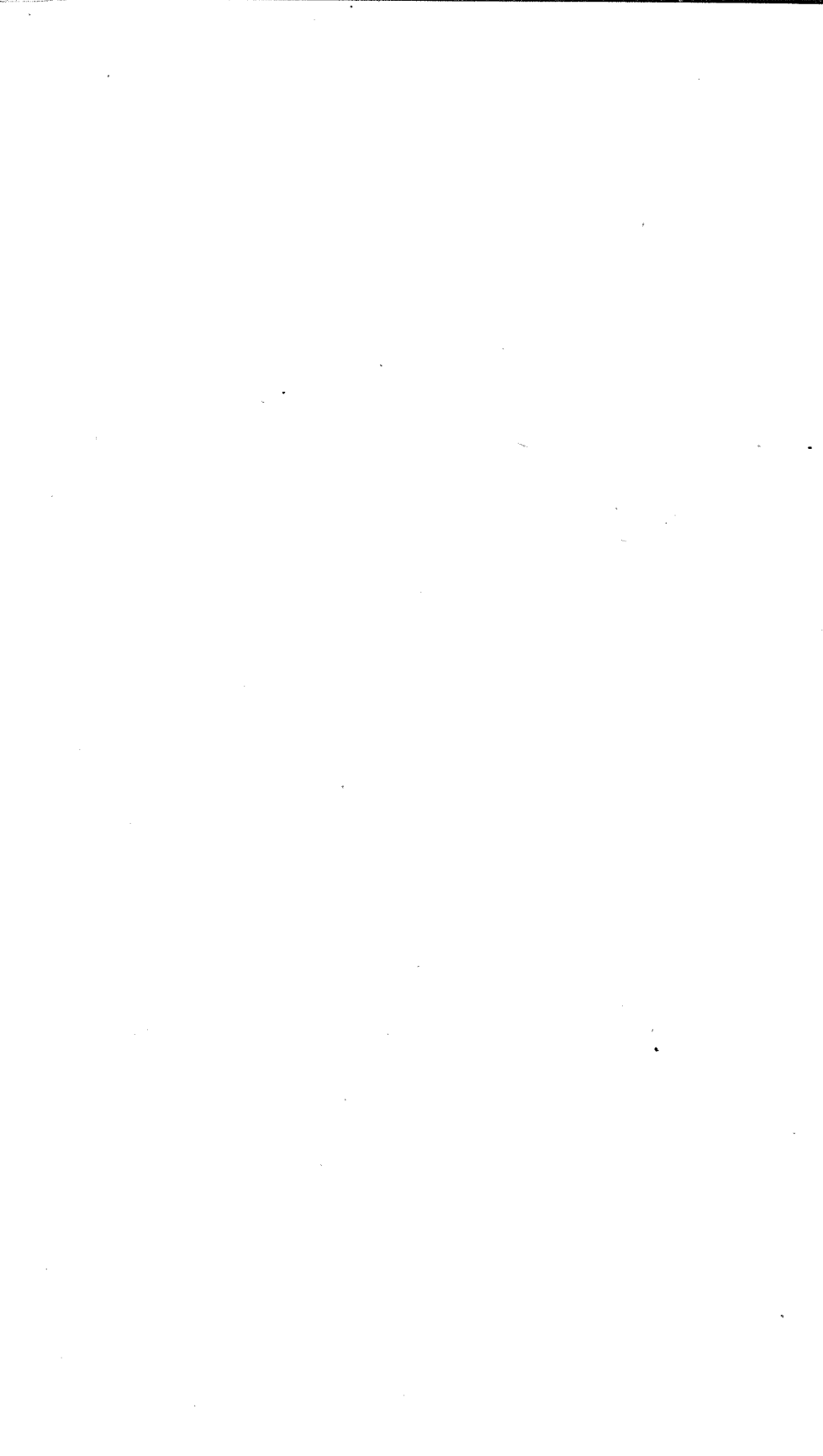
COUNTY	John E. Ramer (Rep.)	William F. Allen (Dem.)
Kit Carson .....	657	419
Lake .....	928	840
La Plata .....	327	826
Larimer .....	2,082	560
Las Animas .....	2,603	738
Lincoln .....	787	644
Logan .....	848	529
Mesa .....	1,384	655
Mineral .....	128	44
Moffat .....	277	227
Montezuma .....	205	612
Montrose .....	646	700
Morgan .....	959	201
Otero .....	870	369
Ouray .....	226	397
Park .....	123	211
Phillips .....	256	134
Pitkin .....	94	430
Prowers .....	677	317
Pueblo .....	2,730	2,908
Rio Blanco .....	139	169
Rio Grande .....	518	129
Routt .....	606	454
Saguache .....	242	292
San Juan .....	91	86
San Miguel .....	292	328
Sedgwick .....	303	103
Summit .....	100	283
Teller .....	998	1,737
Washington .....	529	308

ABSTRACT OF VOTES CAST AT  
**FOR SECRETARY OF STATE—Continued**

COUNTY	John E. Ramer (Rep.)	William F. Allen (Dem.)
Weld .....	3,517	1,122
Yuma .....	425	421
	58,103	36,397

Scattering, 6 Candidates. Total, 34 Votes.





## FOR AUDITOR OF STATE

COUNTY	Olie Thorson (Rep.)	H. H. Harbaugh (Rep.)	Arthur M. Stong (Rep.)	Charles H. Leckenby (Dem.)	Lloyd M. Davis (Dem.)
Adams .....	100	128	137	484	434
Alamosa .....	56	36	189	122	71
Arapahoe .....	391	285	339	400	251
Archuleta .....	80	44	118	172	64
Baca .....	143	75	129	161	196
Bent .....	104	71	53	169	100
Boulder .....	1,297	536	589	467	1,973
Chaffee .....	190	189	168	314	213
Cheyenne .....	228	86	153	182	132
Clear Creek .....	122	64	113	260	132
Conejos .....	360	88	364	65	26
Costilla .....	141	29	191	371	91
Crowley .....	222	122	200	213	251
Custer .....	34	20	37	114	47
Delta .....	563	286	498	305	235
Denver .....	6,214	4,557	4,313	4,954	2,726
Dolores .....	2	1	2	79	68
Douglas .....	81	29	58	83	35
Eagle .....	318	44	74	266	161
Elbert .....	79	46	63	113	130
El Paso .....	1,702	1,128	1,097	502	161
Fremont .....	279	344	259	306	141
Garfield .....	651	116	111	726	346
Gilpin .....	96	54	84	101	109
Grand .....	39	35	48	87	25
Gunnison .....	231	71	123	221	142
Hinsdale .....	25	21	5	61	34
Huerfano .....	964	107	76	188	112
Jackson .....	43	20	27	25	6
Jefferson .....	449	727	357	347	141
Kiowa .....	65	29	52	246	153

## FOR AUDITOR OF STATE—Continued

COUNTY	Olle Thorson (Rep.)	H. H. Harbough (Rep.)	Arthur M. Strong (Rep.)	Charles H. Leckenby (Dem.)	Roy M. Davis (Dem.)
Kit Carson .....	314	129	222	220	212
Lake .....	734	114	228	551	376
La Plata .....	99	94	137	626	287
Larimer .....	718	521	545	310	277
Las Animas .....	1,631	462	670	433	332
Lincoln .....	348	161	270	388	288
Logan .....	347	189	279	332	231
Mesa .....	766	318	416	461	218
Mineral .....	65	26	48	34	15
Moffat .....	156	51	71	204	75
Montezuma .....	53	83	76	495	208
Montrose .....	202	277	154	429	316
Morgan .....	527	215	229	106	103
Otero .....	384	172	298	236	154
Ouray .....	73	81	79	257	190
Park .....	66	24	37	124	116
Phillips .....	103	51	87	79	57
Pitkin .....	58	18	22	363	144
Prowers .....	255	167	233	165	158
Pueblo .....	861	1,365	806	1,864	1,386
Rio Blanco .....	87	29	40	165	46
Rio Grande .....	213	127	195	95	41
Routt .....	250	142	206	477	72
Saguache .....	127	66	98	177	142
San Juan .....	23	50	31	79	26
San Miguel .....	105	76	111	189	174
Sedgwick .....	135	81	95	64	40
Summit .....	50	20	44	244	75
Teller .....	326	262	430	846	987
Washington .....	218	98	192	168	149

## ABSTRACT OF VOTES CAST AT

## FOR AUDITOR OF STATE—Continued

COUNTY	Olie Thorson (Rep.)	H. H. Harbough (Rep.)	Arthur M. Strong (Rep.)	Charles H. Leckenby (Dem.)	Roy M. Davis (Dem.)
Weld .....	668	2,735	786	565	543
Yuma .....	187	126	127	269	187
	<hr/>	<hr/>	<hr/>	<hr/>	<hr/>
	25,418	17,718	17,288	23,119	16,731

Scattering, 7 Candidates. Total, 32 Votes.

Thorson over Harbaugh, 7,700

Leckenby over Davis, 6,388



## ABSTRACT OF VOTES CAST AT

## FOR STATE TREASURER

COUNTY	Harry E. Mulnix (Rep.)	Robert H. Higgins (Dem.)
Adams .....	290	678
Alamosa .....	197	167
Arapahoe .....	977	618
Archuleta .....	209	236
Baca .....	344	361
Bent .....	208	233
Boulder .....	2,199	1,865
Chaffee .....	541	470
Cheyenne .....	455	307
Clear Creek .....	281	335
Conejos .....	580	84
Costilla .....	345	420
Crowley .....	551	450
Custer .....	89	145
Delta .....	1,398	507
Denver .....	14,181	7,168
Dolores .....	14	137
Douglas .....	169	114
Eagle .....	390	389
Elbert .....	168	219
El Paso .....	3,625	1,002
Fremont .....	900	420
Garfield .....	721	997
Gilpin .....	212	181
Grand .....	112	105
Gunnison .....	361	344
Hinsdale .....	46	84
Huerfano .....	1,056	285
Jackson .....	89	26
Jefferson .....	1,298	381
Kiowa .....	150	384

FOR STATE TREASURER—Continued

COUNTY	Harry E. Mulinix (Rep.)	Robert H. Higgins (Dem.)
Kit Carson .....	642	420
Lake .....	1,002	824
La Plata .....	295	809
Larimer .....	1,794	563
Las Animas .....	2,735	722
Lincoln .....	743	649
Logan .....	718	486
Mesa .....	1,447	646
Mineral .....	120	42
Moffat .....	256	232
Montezuma .....	210	627
Montrose .....	654	699
Morgan .....	925	198
Otero .....	858	375
Ouray .....	225	402
Park .....	129	207
Phillips .....	244	137
Pitkin .....	91	429
Prowers .....	664	314
Pueblo .....	2,616	3,181
Rio Blanco .....	135	169
Rio Grande .....	498	131
Routt .....	561	430
Saguache .....	234	289
San Juan .....	94	84
San Miguel .....	282	323
Sedgwick .....	279	100
Summit .....	101	285
Teller .....	936	1,672
Washington .....	512	314

## ABSTRACT OF VOTES CAST AT

## FOR STATE TREASURER—Continued

COUNTY	Harry E. Mulnix (Rep.)	Robert H. Higgins (Dem.)
Weld .....	3,281	1,070
Yuma .....	408	417
	<hr/>	<hr/>
	55,845	36,358

Scattering, 8 Candidates. Total, 32 Votes

Mulnix over Higgins, 19,487





FOR ATTORNEY GENERAL

COUNTY	Samuel G. McMullin (Rep.)	William C. Robinson (Rep.)	Grant E. Halderman (Rep.)	Arthur F. Morrison (Rep.)	Rees D. Rees (Rep.)	Martin Herbert Kennedy (Rep.)	Leslie E. Hubbard (Dem.)
Adams .....	40	78	32	18	158	29	697
Alamosa .....	82	34	12	37	37	31	169
Arapahoe .....	213	170	69	98	438	128	613
Archuleta .....	82	33	14	48	49	22	266
Baca .....	145	66	27	42	40	29	348
Bent .....	71	31	12	24	75	12	236
Boulder .....	270	512	1,206	182	236	173	1,814
Chaffee .....	185	145	52	161	51	42	476
Cheyenne .....	103	221	22	67	44	47	302
Clear Creek .....	56	38	28	114	70	28	301
Conejos .....	288	104	36	196	93	99	79
Costilla .....	96	32	25	11	199	20	421
Crowley .....	119	216	50	42	75	68	416
Custer .....	26	15	15	8	22	11	137
Delta .....	640	359	53	101	123	215	503
Denver .....	1,934	2,031	2,706	1,903	6,907	2,170	7,159

ABSTRACT OF VOTES CAST AT

Dolores .....	5	0	0	0	0	0	151
Douglas .....	19	78	10	17	40	17	112
Eagle .....	105	93	33	87	47	56	391
Elbert .....	39	85	7	27	34	6	214
El Paso .....	677	2,889	139	213	269	452	1,002
Fremont .....	203	306	55	97	178	107	405
Garfield .....	281	184	47	88	117	67	1,015
Gilpin .....	43	90	21	35	51	19	177
Grand .....	18	26	11	24	36	18	108
Gunnison .....	140	115	62	32	39	24	301
Hinsdale .....	19	3	6	1	19	3	89
Huerfano .....	282	79	583	45	58	37	281
Jackson .....	24	33	12	3	13	8	28
Jefferson .....	222	439	153	261	470	155	432
Kiowa .....	55	66	12	10	14	16	379
Kit Carson .....	172	217	53	62	107	62	416
Lake .....	263	302	130	136	119	86	823
La Plata .....	101	102	24	30	57	28	832
Larimer .....	392	409	408	155	383	150	530
Las Animas .....	1,264	479	186	250	408	238	701
Lincoln .....	189	279	62	92	76	111	630
Logan .....	215	179	75	241	86	50	490
Mesa .....	1,216	253	63	72	108	64	597
Mineral .....	42	16	8	0	64	14	39

FOR ATTORNEY GENERAL—Continued

COUNTY	Samuel C. McMullin (Rep.)	William C. Robinson (Rep.)	Grant E. Holderman (Rep.)	Arthur R. Morrison (Rep.)	Rees D. Rees (Rep.)	Martin Herbert Kennedy (Rep.)	Leslie E. Hubbard (Dem.)
Moffat .....	93	41	24	22	57	39	222
Montezuma .....	68	94	13	4	24	13	627
Montrose .....	300	175	32	51	65	61	687
Morgan .....	322	221	188	61	136	90	188
Otero .....	204	273	47	104	246	65	344
Ouray .....	109	32	14	20	46	25	405
Park .....	32	29	10	16	29	14	206
Phillips .....	55	129	15	16	31	19	129
Pitkin .....	30	20	10	7	18	18	423
Prowers .....	318	243	42	29	68	42	300
Pueblo .....	781	713	174	229	945	294	2,931
Rio Blanco .....	61	61	6	13	18	15	169
Rio Grande .....	162	147	46	50	92	76	133
Routt .....	140	144	57	100	107	88	444
Saguache .....	100	59	15	31	51	26	294
San Juan .....	22	39	5	43	18	4	91

San Miguel .....	111	67	26	38	55	24	305
Sedgwick .....	92	179	18	10	31	21	101
Summit .....	24	24	11	10	38	7	287
Teller .....	223	252	165	92	225	87	1,632
Washington .....	206	131	30	36	69	55	305
Weld .....	877	812	695	288	782	361	1,057
Yuma .....	113	193	34	25	79	28	417
	14,779	14,885	8,196	6,325	14,640	6,384	35,777

Scattering, 6 Candidates. Total, 41 Votes.

Robinson over McMullin, 106

## FOR SUPERINTENDENT OF PUBLIC INSTRUCTION

COUNTY	Helen M. Wixson (Rep.)	Grace Ellen Shoe Smith (Rep.)	Mary C. C. Bradford (Dem.)
Adams .....	210	171	819
Alamosa .....	187	57	187
Arapahoe .....	755	346	643
Archuleta .....	166	76	247
Baca .....	262	107	375
Bent .....	176	72	256
Boulder .....	1,529	874	1,955
Chaffee .....	434	154	471
Cheyenne .....	327	118	324
Clear Creek .....	230	96	370
Conejos .....	690	226	82
Costilla .....	315	45	429
Crowley .....	398	186	438
Custer .....	69	26	145
Delta .....	1,178	330	509
Denver .....	8,940	7,280	7,260
Dolores .....	5	3	155
Douglas .....	135	45	118
Eagle .....	301	117	416
Elbert .....	128	73	239
El Paso .....	3,022	960	1,035
Fremont .....	730	218	423
Garfield .....	506	272	1,020
Gilpin .....	204	66	201
Grand .....	98	26	112
Gunnison .....	276	127	331
Hinsdale .....	33	18	97
Huerfano .....	1,044	101	286
Jackson .....	70	26	29
Jefferson .....	816	802	451
Kiowa .....	122	45	408

## FOR SUPERINTENDENT OF PUBLIC INSTRUCTION—Continued

COUNTY	Helen M. Wixson (Rep.)	Grace Ellen Shoe Smith (Rep.)	Mary C. C. Bradford (Dem.)
Kit Carson .....	494	232	431
Lake .....	719	341	894
La Plata .....	317	53	872
Larimer .....	1,473	463	580
Las Animas .....	2,235	646	761
Lincoln .....	539	286	679
Logan .....	643	233	521
Mesa .....	1,174	394	678
Mineral .....	87	57	42
Moffat .....	210	76	248
Montezuma .....	126	95	644
Montrose .....	496	178	750
Morgan .....	736	291	199
Otero .....	639	275	371
Ouray .....	87	168	418
Park .....	103	44	227
Phillips .....	194	77	139
Pitkin .....	74	25	476
Prowers .....	474	243	316
Pueblo .....	1,985	965	3,033
Río Blanco .....	111	53	183
Río Grande .....	400	208	129
Routt .....	449	200	452
Saguache .....	231	48	291
San Juan .....	60	52	91
San Miguel .....	258	45	339
Sedgwick .....	242	92	109
Summit .....	77	31	286
Teller .....	728	336	1,773
Washington .....	375	157	313

## FOR SUPERINTENDENT OF PUBLIC INSTRUCTION—Continued

COUNTY	Helen M. Wixson (Rep.)	Grace Ellen Shoe Smith (Rep.)	Mary C. C. Bradford (Dem.)
Weld .....	2,766	1,105	1,132
Yuma .....	337	174	474
	<hr/>	<hr/>	<hr/>
	42,193	20,706	37,682

Scattering, 7 Candidates. Total, 30 Votes.

Wixson over Smith, 21,487





FOR JUDGES OF THE SUPREME COURT

COUNTY	William H. Gabbert (Rep.)	Chas. Cavender (Rep.)	George W. Allen (Rep.)	Samuel N. Wheeler (Dem.)	George W. Musser (Dem.)	Morton S. Bailey (Dem.)	Robert G. Strong (Dem.)
Adams .....	235	110	324	398	278	279	654
Alamosa .....	146	108	136	112	53	137	59
Arapahoe .....	631	446	757	284	331	348	174
Archuleta .....	152	59	179	161	97	108	78
Baca .....	192	112	228	236	92	114	110
Bent .....	141	96	108	149	92	101	93
Boulder .....	1,773	893	1,329	623	972	678	1,522
Chaffee .....	387	405	272	289	142	421	128
Cheyenne .....	282	188	283	178	78	88	126
Clear Creek .....	219	110	184	167	174	141	176
Conejos .....	570	333	361	60	33	18	31
Costilla .....	300	128	201	372	216	221	60
Crowley .....	371	220	310	273	191	186	154
Custer .....	69	67	39	53	80	163	21
Delta .....	1,083	620	665	347	192	275	120
Denver .....	10,895	7,052	13,126	3,568	4,754	4,885	2,731

ABSTRACT OF VOTES CAST AT

Dolores .....	3	2	4	96	44	71	43
Douglas .....	113	71	110	42	73	68	32
Eagle .....	154	405	138	235	162	196	116
Elbert .....	119	62	116	102	149	125	62
El Paso .....	2,758	2,096	2,133	410	853	424	319
Fremont .....	746	695	343	133	210	390	120
Garfield .....	370	492	348	743	333	504	234
Gilpin .....	136	115	120	71	92	84	96
Grand .....	72	60	65	89	64	36	22
Gunnison .....	302	182	245	247	130	151	100
Hinsdale .....	43	20	27	74	51	24	21
Huerfano .....	1,114	910	201	140	186	164	63
Jackson .....	78	33	46	20	4	6	25
Jefferson .....	1,080	429	1,077	197	232	236	196
Kiowa .....	106	57	77	336	103	123	189
Kit Carson .....	406	255	420	220	175	170	161
Lake .....	431	1,396	390	592	395	363	337
La Plata .....	248	109	199	559	396	320	218
Larimer .....	1,481	467	1,249	176	246	202	444
Las Animas .....	2,166	1,446	1,103	400	455	412	192
Lincoln .....	465	309	439	353	264	231	203
Logan .....	563	281	517	214	230	262	262
Mesa .....	969	763	601	778	257	187	97
Mineral .....	92	49	73	28	25	29	11