

STATE OF COLORADO

# Abstract of Votes Cast

AT THE

## Primary Election

Held on the Eighth Day of September  
A. D. 1914

AND AT THE

## General Election

Held on Third Day of November.  
A. D. 1914

FOR

United States Senators, Congressmen, and State,  
Legislative and District Officers

ALSO THE

Proposed Constitutional Amendments  
Initiated and Referred Measures

COMPILED FROM OFFICIAL RETURNS

BY

JOHN E. RAMER  
Secretary of State

1915



DENVER, COLORADO

ABSTRACT OF VOTES CAST AT A PRIMARY ELECTION HELD ON  
TUESDAY, SEPTEMBER 8, A. D. 1914, FOR REGENTS OF THE UNI-  
VERSITY OF COLORADO, FOR THE FULL TERM.

COUNTY	Minnie L. Harding (Dem.)	E. D. Webb (Dem.)	Clifford C. Parks (Rep.)	Thomas L. Wilkinson (Rep.)	Randolph Cook (Prog.)	E. Stewart (Prog.)
Adams .....	719	...	79	36	42	...
Alamosa ...	319	...	162	70	28	...
Arapahoe ...	434	2	151	102	239	...
Archuleta ..	81	...	62	72	...	...
Baca .....	171	...	152	101	5	...
Bent .....	186	...	93	69	35	...
Boulder ....	1,099	64	1,164	923	96	...
Chaffee .....	330	...	114	54	8	...
Cheyenne ...	233	...	173	145	...	...
Clear Creek..	297	...	185	68	11	...
Conejos .....	210	...	301	156	...	...
Costilla .....	75	...	301	144	...	...
Crowley ....	304	...	130	90	4	...
Custer .....	167	...	31	21	6	...
Delta .....	288	...	191	131	287	...
Denver .....	5,109	2	5,184	5,329	1,683	...
Dolores ....	85	...	2	4	5	...
Douglas ....	135	...	179	117	3	...
Eagle .....	322	...	194	108	23	...
Elbert .....	135	...	124	91	4	...
El Paso ....	1,271	...	1,258	838	410	...
Fremont ...	536	...	445	408	59	...
Garfield ....	709	...	241	112	26	...
Gilpin .....	156	...	61	43	10	...
Grand .....	68	...	118	43	3	...
Gunnison ...	293	...	141	86	5	...
Hinsdale ...	33	...	47	30	...	...
Huerfano ...	582	...	984	835	30	...
Jackson .....	23	...	50	21	3	...
Jefferson ...	504	...	925	716	85	...
Kiowa .....	138	...	73	46	31	...

ABSTRACT OF VOTES CAST

ABSTRACT OF VOTES CAST AT A GENERAL ELECTION HELD ON TUESDAY, SEPTEMBER 8, A. D. 1914, FOR REGENTS OF THE UNIVERSITY OF COLORADO, FOR THE FULL TERM.—Continued.

COUNTY	Minnie L. Harding (Dem.)	E. D. Webb (Dem.)	Clifford C. Parks (Dem.)	Thomas L. Wilkinson (Rep.)	Randolph Cook (Prog.)	C. E. Stewart (Prog.)
Kit Carson..	366	...	183	169	52	...
Lake .....	470	...	412	279	39	...
La Plata....	76	...	318	205	12	...
Larimer ....	366	...	762	586	133	...
Las Animas..	1,658	...	1,346	422	46	...
Lincoln ....	296	...	435	309	10	...
Logan .....	331	...	417	191	150	3
Mesa .....	490	...	251	107	199	...
Mineral ....	68	...	34	7	...	...
Moffat .....	75	...	75	48	5	...
Montezuma...	545	...	48	34	8	...
Montrose ...	642	...	257	107	25	...
Morgan ....	135	...	537	312	63	22
Otero .....	875	...	441	354	30	...
Ouray .....	234	...	95	53	3	...
Park .....	210	...	65	50	3	...
Phillips ....	130	...	117	67	36	...
Pitkin .....	247	...	63	39	15	...
Prowers ....	213	...	245	174	115	...
Pueblo .....	3,543	...	2,155	1,601	77	...
Rio Blanco...	135	...	70	29	3	...
Rio Grande..	149	...	248	174	9	...
Routt .....	229	...	122	71	7	...
Saguache ...	234	...	208	133	9	...
San Juan....	74	...	83	58	11	...
San Miguel..	426	...	114	25	2	...
Sedgwick ..	48	...	64	36	137	...
Summit ....	167	...	49	27	1	...
Teller .....	1,781	...	212	162	97	...
Washington..	304	...	135	65	22	...

ABSTRACT OF VOTES CAST AT A PRIMARY ELECTION HELD ON  
TUESDAY, SEPTEMBER 8, A. D. 1914, FOR REGENTS OF THE UNI-  
VERSITY OF COLORADO, FOR THE FULL TERM.—Continued.

COUNTY	Minnie L. Harding (Dem.)	E. D. Webb (Dem.)	Clifford C. Parks (Rep.)	Thomas L. Wilkinson (Rep.)	Randolph Cook (Prog.)	C. E. Stewart (Prog.)
Weld .....	705	...	1,240	983	289	...
Yuma .....	256	...	228	80	30	4
	<hr/> 30,490	<hr/> 68	<hr/> 24,344	<hr/> 17,966	<hr/> 4,777	<hr/> 29

Scattering, Democratic, 99 candidates, 187

Scattering, Republican, 20 candidates, 35

Scattering, Progressive, 25 candidates, 69

ABSTRACT OF VOTES CAST AT A PRIMARY ELECTION HELD ON TUESDAY, SEPTEMBER 8, A. D. 1914, FOR REGENT OF THE UNIVERSITY OF COLORADO, TO FILL VACANCY.

COUNTIES	E. D. Webb (Dem.)	Walter M. Appel (Dem.)	A. D. Parker (Rep.)	Thomas L. Wilkinson (Rep.)	Chas. R. Dudley (Rep.)	C. E. Stewart (Prog.)	Randolph Cook (Prog.)
Boulder .....	127	...	64	...	...	...	...
Denver .....	8	5	...	31	19	5	5
Jefferson .....	...	...	...	...	...	1	...
Logan .....	...	...	...	...	...	6	...
Pueblo .....	...	...	2	...	...	...	...
Routt .....	20	...	...	...	...	...	...
Washington ...	...	...	...	...	...	4	...
	<hr/> 155	<hr/> 5	<hr/> 66	<hr/> 31	<hr/> 19	<hr/> 16	<hr/> 5

Scattering, Democratic, 103 candidates, 196

Scattering, Republican, 112 candidates, 202

Scattering, Progressive, 36 candidates, 48

There having been no candidates designated, the above were written in by the voters, which accounts for so few counties shown as having made returns.

## ABSTRACT OF VOTES CAST

ABSTRACT OF VOTES CAST AT A GENERAL ELECTION HELD ON  
TUESDAY, NOVEMBER 3, A. D. 1914, FOR DISTRICT JUDGE, OF  
TWELFTH JUDICIAL DISTRICT (TO FILL VACANCY).

COUNTIES	John S. Palmer (Law)	Jesse C. Wiley (Ind.)
Alamosa .....	707	642
Conejos .....	854	846
Costilla .....	557	273
Mineral .....	142	240
Rio Grande .....	660	1,279
Saguache .....	878	761
Totals.....	3,798	4,041
Majority for Wiley over Palmer.....		243

ABSTRACT OF VOTES CAST AT A GENERAL ELECTION HELD ON  
TUESDAY, NOVEMBER 3, A. D. 1914, FOR STATE SENATORS FROM  
THE FIRST SENATORIAL DISTRICT.

City and County of Denver.

Julius Aichele, Democratic .....	15,148
T. J. Brown, Socialist.....	3,660
Frank L. Dodge, Republican.....	25,476
William R. Eaton, Republican.....	25,283
Harvey E. Garman, no ass'by.....	5,483
Charles B. Hamilton, Democratic.....	22,796
Barney Haughey, no ass'by.....	702
John Hecker, L., O. and J.....	3,125
John E. Holmberg, Republican.....	22,182
Hattie K. Howard, Progressive.....	6,732
Francis J. Knauss, Republican .....	24,029
Charles N. Knowles, Progressive .....	9,022
Nicholas Ludwig, no ass'by.....	2,130
Phillip McCarty, Democratic .....	17,055
Martin H. Mitchell, Democratic .....	16,469
John Nitsch, Socialist.....	2,913
Maude E. Sanders, Progressive .....	8,051
John A. Sells, Socialist .....	2,750
Chester E. Smedley, Progressive .....	10,588
Fred Underhill, Socialist .....	3,202
Dodge over Holmberg.....	3,294
Eaton over Holmberg.....	3,101
Knauss over Holmberg.....	1,847
Hamilton over Holmberg.....	614

## ABSTRACT OF VOTES CAST

ABSTRACT OF VOTES CAST AT A GENERAL ELECTION HELD ON  
TUESDAY, NOVEMBER 3, A. D. 1914, FOR STATE SENATOR FROM  
THE SECOND SENATORIAL DISTRICT.

COUNTY	H. G. DeTienne (Dem.)	Wilkins O. Peterson (Rep.)	C. B. Anthony (Soc.)
Pueblo .....	4,955	6,906	701
Peterson over De Tienne.....		1,951	

ABSTRACT OF VOTES CAST AT A GENERAL ELECTION HELD ON  
TUESDAY, NOVEMBER 3, A. D. 1914, FOR STATE SENATOR FROM  
THE THIRD SENATORIAL DISTRICT.

COUNTY	David Elliott (Rep.)	John T. Kavanaugh (Dem.)	C. A. Lemmers (Prog.)	M. J. Acton (Soc.)
El Paso .....	5,298	4,215	3,435	731
Elliott over Kavanaugh.....			1,083.	



ABSTRACT OF VOTES CAST AT A GENERAL ELECTION HELD ON TUESDAY, NOVEMBER 3, A. D. 1914, FOR STATE SENATOR FROM THE SIXTH SENATORIAL DISTRICT.

COUNTIES	William J. Candlish (Rep.-Prog.)	Walter L. Philbin (Dem.)
Chaffee .....	1,391	1,393
Lake .....	1,806	1,638
	3,197	3,031
Candlish's majority .....		166

ABSTRACT OF VOTES CAST AT A GENERAL ELECTION HELD ON TUESDAY, NOVEMBER 3, A. D. 1914, FOR STATE SENATOR FROM THE SEVENTH SENATORIAL DISTRICT.

COUNTY	B. F. Early (Dem.)	James W. Gault (Prog.)	Robert E. Winbourne (Rep.)	N. N. Westfall (Soc.)
Weld .....	3,969	1,478	5,502	500
Winbourne over Early.....				1,533

## ABSTRACT OF VOTES CAST

ABSTRACT OF VOTES CAST AT A GENERAL ELECTION HELD ON  
TUESDAY, NOVEMBER 3, A. D. 1914, FOR STATE SENATOR FROM  
THE TENTH SENATORIAL DISTRICT.

COUNTY	Fred W. Stow (Dem.)	C. F. Wilkin (Rep.-Prog.)	J. H. Mayfield (Soc.)
Larimer .....	2,631	3,271	444
Wilkin over Stow.....		640	

ABSTRACT OF VOTES CAST AT A GENERAL ELECTION HELD ON  
TUESDAY, NOVEMBER 3, A. D. 1914, FOR STATE SENATOR FROM  
THE TWELFTH SENATORIAL DISTRICT.

COUNTIES	Clarence O. Finch (Dem.)	Henry A. Klingner (Prog.)	O. L. Mitten (Rep.)
Logan .....	1,304	303	1,433
Phillips .....	439	125	521
Sedgwick .....	358	168	406
Washington .....	691	195	853
Yuma .....	964	707	1,141
	<hr/>	<hr/>	<hr/>
	3,756	1,498	4,354
Mitten over Finch.....		598	

ABSTRACT OF VOTES CAST

ABSTRACT OF VOTES CAST AT A GENERAL ELECTION HELD ON TUESDAY, NOVEMBER 3, A. D. 1914, FOR STATE SENATOR FROM THE FOURTEENTH SENATORIAL DISTRICT.

COUNTIES	Charles Hayden (Rep.)	A. D. Mackenzie (Dem.-Prog.)
Costilla .....	729	356
Custer .....	315	589
Huerfano .....	2,348	2,132
	<hr/>	<hr/>
	3,392	3,077
Hayden's majority .....	315	

ABSTRACT OF VOTES CAST AT A GENERAL ELECTION HELD ON TUESDAY, NOVEMBER 3, A. D. 1914, FOR STATE SENATOR FROM THE FIFTEENTH SENATORIAL DISTRICT.

COUNTIES	Frank H. Means (Rep.)	Byron A. Roloson (Dem.)
Mineral .....	147	210
Rio Grande .....	1,182	881
Saguache .....	1,102	715
	<hr/>	<hr/>
	2,431	1,806
Means' majority .....	625	

ABSTRACT OF VOTES CAST

ABSTRACT OF VOTES CAST AT A GENERAL ELECTION HELD ON TUESDAY, NOVEMBER 3, A. D. 1914, FOR STATE SENATOR FROM THE SIXTEENTH SENATORIAL DISTRICT.

COUNTY	Erman W. Kluge (Dem.)	Avery C. Newton (Prog.)	F. Barnard Welsh (Rep.)	E. M. Cline (Soc.)
Mesa .....	2,522	1,543	1,375	929
Kluge over Newton.....				979

ABSTRACT OF VOTES CAST AT A GENERAL ELECTION HELD ON TUESDAY, NOVEMBER 3, A. D. 1914, FOR STATE SENATOR FROM THE SEVENTEENTH SENATORIAL DISTRICT.

COUNTIES	Fred Schermerhorn (Dem.)	S. Wonder (Rep.)
Dolores .....	141	65
Montrose .....	1,755	1,728
San Miguel .....	943	810
	<hr/>	<hr/>
	2,839	2,603
Schermerhorn's majority .....		236

ABSTRACT OF VOTES CAST

ABSTRACT OF VOTES CAST AT A GENERAL ELECTION HELD ON TUESDAY, NOVEMBER 3, A. D. 1914, FOR STATE SENATOR FROM THE EIGHTEENTH SENATORIAL DISTRICT.

COUNTIES	Herbert E. Curran (Rep.)	John H. Slattery (Dem.)
Archuleta .....	453	464
Hinsdale .....	127	115
Ouray .....	781	519
San Juan .....	436	433
	<hr/>	<hr/>
	1,797	1,531
Curran's majority .....		266

ABSTRACT OF VOTES CAST AT A GENERAL ELECTION HELD ON TUESDAY, NOVEMBER 3, A. D. 1914, FOR STATE SENATOR FROM THE TWENTIETH SENATORIAL DISTRICT.

COUNTIES	George Lewis (Dem.)	Melville B. Rapp (Rep.-Prog.)	W. B. Butler (Soc.)
Park .....	475	367	48
Teller .....	3,406	1,459	437
	<hr/>	<hr/>	<hr/>
	3,881	1,826	485
Lewis over Rapp .....			2,055

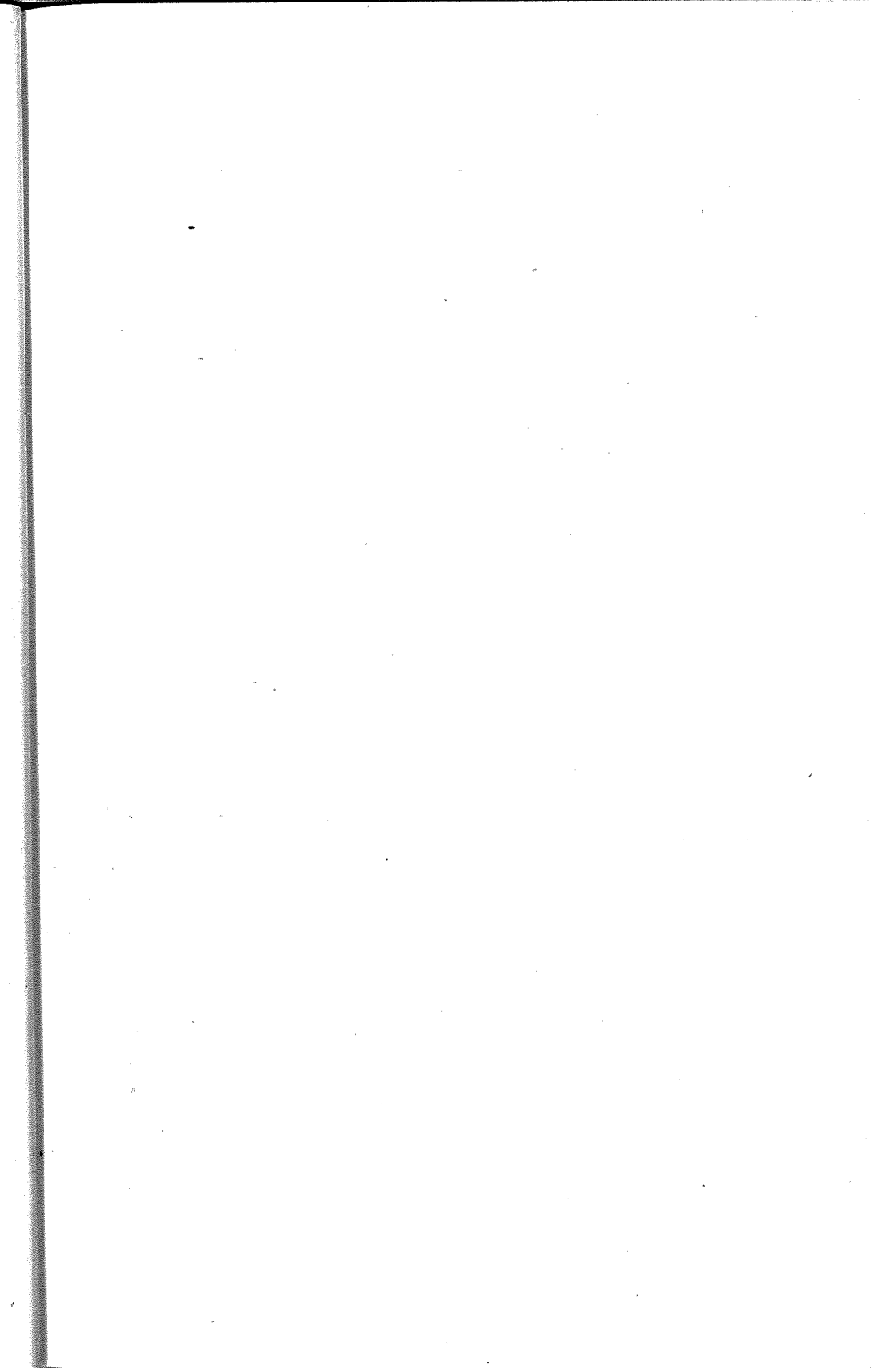
## ABSTRACT OF VOTES CAST

ABSTRACT OF VOTES CAST AT A GENERAL ELECTION HELD ON  
TUESDAY, NOVEMBER 3, A. D. 1914, FOR STATE SENATOR FROM  
THE TWENTY-FIFTH SENATORIAL DISTRICT.

COUNTIES	John S. Hasty (Rep.)	M. M. Simpson (Dem.-Prog.)
Baca .....	594	510
Bent .....	907	826
Kiowa .....	573	665
Prowers .....	1,607	1,272
	<hr/>	<hr/>
	3,681	3,273
Hasty's majority .....		408

ABSTRACT OF VOTES CAST AT A GENERAL ELECTION HELD ON  
TUESDAY, NOVEMBER 3, A. D. 1914, FOR STATE SENATOR FROM  
THE TWENTY-SEVENTH SENATORIAL DISTRICT.

COUNTIES	W. H. Abbott (Prog.)	John F. Dickinson (Rep.)	William D. Reilly (Dem.)
Cheyenne .....	72	553	351
Douglas .....	41	556	608
Elbert .....	115	605	1,062
Kit Carson .....	437	735	615
Lincoln .....	123	949	929
	<hr/>	<hr/>	<hr/>
	788	3,398	3,565
Reilly over Dickinson .....			167



ABSTRACT OF VOTES CAST AT A GENERAL ELECTION HELD ON  
TUESDAY, NOVEMBER 3, A. D. 1914, FOR REPRESENTATIVE IN  
THE TWENTIETH GENERAL ASSEMBLY FROM THE CITY AND  
COUNTY OF DENVER.

Joseph S. Baker, Progressive.....	14,191
Edward B. Bartholic, Socialist.....	3,359
George M. Bergen, No Ass'by.....	1,193
Morris Berkowitz, Socialist.....	3,143
Carroll M. Bills, Republican.....	25,320
Herman A. Bolster, No Ass'by.....	1,127
Rudolph Borchardt, Tax Payer.....	4,201
William T. Boyd, Progressive.....	7,350
Joseph B. Cobbs, No. Ass'by.....	1,447
Albert Gallatin Craig, Democrat.....	18,038
John F. Critchfield, Socialist.....	3,247
John Dietrich, Democrat.....	21,076
George B. Drake, Republican.....	25,388
Edward V. Dunklee, Democrat.....	23,142
James G. Edgeworth, Socialist.....	3,341
William F. Evans, Progressive.....	8,121
William Engelbert Frye, Progressive.....	7,468
Walter R. Garretson, Republican.....	17,998
James O. Garrett, Democrat.....	17,437
Harold G. Garwood, Republican.....	20,014
McLeod M. George, Progressive.....	6,405
John S. Gable, No Ass'by.....	1,223
Alby N. Gordon, Socialist.....	3,188
Randolph M. Hagerman, Republican.....	22,964
Robert Harris, Republican.....	22,216
Evangeline Heartz, Democrat.....	20,119
Axel E. Helme, No Ass'by.....	1,005
William W. Howland, Republican.....	21,264
Thomas M. Hyder, Democrat.....	15,239
John T. Joyce, Socialist.....	3,203
Jennie B. Kern, Socialist.....	2,841
Margaret W. Kessler, Progressive.....	6,719
Albert Kiefer, Socialist.....	3,146
Fred Lambert, No Ass'by.....	2,003
James Thomas Macey, Republican.....	16,992
Adrian Maguire, No Ass'by.....	2,272
Louise A. Maloney, Democrat.....	14,935



ABSTRACT OF VOTES CAST AT A GENERAL ELECTION HELD ON  
TUESDAY, NOVEMBER 3, A. D. 1914, FOR REPRESENTATIVE IN  
THE TWENTIETH GENERAL ASSEMBLY FROM THE CITY AND  
COUNTY OF DENVER.—Continued.

Thomas F. McGovern, Democrat.....	16,656
William J. McPherson, Progressive.....	7,691
Rufus P. Means, Democrat.....	14,377
Schuyler C. Peck, Progressive.....	7,650
Burnett S. Pepper, Progressive.....	6,786
Leonard Ruehle, No Ass'by.....	1,668
Stephen W. Ryan, Democrat.....	16,279
John A. Rymer, Progressive.....	6,891
Edward M. Sabin, Republican.....	18,994
Benjamin J. Salmon, Democrat.....	17,547
Charles H. Schreiber, Progressive.....	12,706
William P. Simmington, Progressive.....	10,616
Jennie E. Smith, Socialist.....	3,310
Frank Springrose, No Ass'by.....	700
Edward W. Stuart, No Ass'by.....	991
Fred J. Taylor, No Ass'by.....	2,332
Frank D. Thompson, Republican.....	23,220
Thomas Tonge, Republican.....	19,614
Charles W. Varnum, Republican.....	17,082
Jesse Vetter, Socialist.....	3,602
John Redmond Williams, Democrat.....	17,866
Anton F. Willmer, Socialist.....	2,894
William Young, Socialist.....	3,275
Drake over Craig.....	7,350
Dunklee over Craig.....	5,104
Howland over Craig.....	3,226
Garwood over Craig.....	1,976
Bills over Craig.....	7,282
Hagerman over Craig.....	4,926
Dietrich over Craig.....	3,038
Tonge over Craig.....	1,576
Thompson over Craig.....	5,182
Harris over Craig.....	4,170
Heartz over Craig.....	2,081
Sabin over Craig.....	956

## ABSTRACT OF VOTES CAST

ABSTRACT OF VOTES CAST AT A GENERAL ELECTION HELD ON TUESDAY, NOVEMBER 3, A. D. 1914, FOR REPRESENTATIVES IN THE TWENTIETH GENERAL ASSEMBLY, FROM THE COUNTY OF ADAMS.

COUNTY	James N. Counter (Dem.)	Samuel H. Morrow (Rep.-Prog.)
Adams .....	1,446	1,001
Counter's majority .....	445	

ABSTRACT OF VOTES CAST AT A GENERAL ELECTION HELD ON TUESDAY, NOVEMBER 3, A. D. 1914, FOR REPRESENTATIVES IN THE TWENTIETH GENERAL ASSEMBLY, FROM THE COUNTY OF ALAMOSA.

COUNTY	Robert M. Born (Dem.)	Perry Craig (Rep.-Prog.)
Alamosa .....	838	715
Born's majority .....	123	

ABSTRACT OF VOTES CAST AT A GENERAL ELECTION HELD ON TUESDAY, NOVEMBER 3, A. D. 1914, FOR REPRESENTATIVE IN THE TWENTIETH GENERAL ASSEMBLY FROM THE COUNTIES OF ARAPAHOE AND ELBERT.

COUNTIES	Frank Ford (Prog.)	Fred F. Hee (Dem.)	J. J. Kruse (Rep.)
Arapahoe .....	1,035	1,199	1,053
Elbert .....	156	535	1,084
	1,191	1,734	2,137

Kruse over Hee..... 403

ABSTRACT OF VOTES CAST AT A GENERAL ELECTION HELD ON TUESDAY, NOVEMBER 3, A. D. 1914, FOR REPRESENTATIVES IN THE TWENTIETH GENERAL ASSEMBLY, FROM THE COUNTY OF BOULDER. (TWO TO ELECT).

A. P. Ardourel, Democrat.....	4,435
L. E. Girard, Republican.....	3,750
Joseph Hurd, Democrat.....	2,994
R. L. Montgomery, Republican.....	4,023
Henry Stewart, Socialist.....	605
John C. Thompson, Socialist.....	635
Ardourel over Girard.....	685
Montgomery over Girard.....	273

## ABSTRACT OF VOTES CAST

ABSTRACT OF VOTES CAST AT A GENERAL ELECTION HELD ON TUESDAY, NOVEMBER 3, A. D. 1914, FOR REPRESENTATIVE IN THE TWENTIETH GENERAL ASSEMBLY, FROM THE COUNTY OF CHAFFEE.

COUNTY	A. E. Wright, Jr. (Dem.)	Homer J. Brown (Soc.)	Edwin A. Van Camp (Citizen)
Chaffee .....	1,488	397	797
Wright over Van Camp.....			691

ABSTRACT OF VOTES CAST AT A GENERAL ELECTION HELD ON TUESDAY, NOVEMBER 3, A. D. 1914, FOR REPRESENTATIVE IN THE TWENTIETH GENERAL ASSEMBLY, FROM THE COUNTY OF CLEAR CREEK.

COUNTY	Frank Brady (Dem.)	Herman E. Crist (Rep.)
Clear Creek.....	743	991
Crist's majority .....		248

ABSTRACT OF VOTES CAST

ABSTRACT OF VOTES CAST AT A GENERAL ELECTION HELD ON TUESDAY, NOVEMBER 3, A. D. 1914, FOR REPRESENTATIVE IN THE TWENTIETH GENERAL ASSEMBLY, FROM THE COUNTY OF CONEJOS.

COUNTY	Celestino Garcia (Rep.)	Ricardo Gonzales (Dem.)
Conejos .....	1,404	989
Garcia's majority .....		415

ABSTRACT OF VOTES CAST AT A GENERAL ELECTION HELD ON TUESDAY, NOVEMBER 3, A. D. 1914, FOR REPRESENTATIVES IN THE TWENTIETH GENERAL ASSEMBLY FROM THE COUNTIES OF CROWLEY AND OTERO. (TWO TO ELECT).

COUNTIES	Reuben C. Inge (Rep.-Prog.)	Stephen F. Ilgenfritz (Dem.)	Orlando W. West (Dem.)	Chas. C. Wooldridge (Rep.-Prog.)
Crowley .....	615	598	507	831
Otero .....	2,829	1,850	2,694	2,327
	<hr/>	<hr/>	<hr/>	<hr/>
	3,444	2,448	3,201	3,158
Inge over Wooldridge.....				286
West over Wooldridge.....				43

## ABSTRACT OF VOTES CAST

ABSTRACT OF VOTES CAST AT A GENERAL ELECTION HELD ON TUESDAY, NOVEMBER 3, A. D. 1914, FOR REPRESENTATIVE IN THE TWENTIETH GENERAL ASSEMBLY, FROM THE COUNTY OF DELTA.

COUNTY	Geo. W. Bruce (Dem.)	C. C. Hawkins (Prog.)	Jacob Keiser (Rep.)	F. J. Pearson (Soc.)
Delta .....	1,848	1,084	836	494
Bruce over Hawkins.....				764

ABSTRACT OF VOTES CAST AT A GENERAL ELECTION HELD ON TUESDAY, NOVEMBER 3, A. D. 1914, FOR REPRESENTATIVE IN THE TWENTIETH GENERAL ASSEMBLY, FROM THE COUNTY OF DOUGLAS.

COUNTY	Charles Shipman (Dem.)	Hugh Taylor (Rep.)
Douglas .....	577	680
Taylor's majority .....		103

ABSTRACT OF VOTES CAST AT A GENERAL ELECTION HELD ON TUESDAY, NOVEMBER 3, A. D. 1914, FOR REPRESENTATIVE IN THE TWENTIETH GENERAL ASSEMBLY, FROM THE COUNTY OF EAGLE.

COUNTY	James Dilts (Rep.)	Erlo E. Kennedy (Dem.)	R. W. Livers (Prog.)
Eagle .....	617	721	137
Kennedy over Dilts.....			104

ABSTRACT OF VOTES CAST AT A GENERAL ELECTION HELD ON TUESDAY, NOVEMBER 3, A. D. 1914, FOR REPRESENTATIVES IN THE TWENTIETH GENERAL ASSEMBLY, FROM THE COUNTY OF EL PASO. (THREE TO ELECT).

Jack Grant, Democrat.....	3,682
George B. Gould, Progressive.....	3,553
Lillian H. Kerr, Progressive.....	2,982
J. N. Pribble, Democrat.....	3,095
L. A. Puffer, Republican.....	5,686
M. M. Sinton, Democrat.....	4,575
P. B. Stewart, Republican.....	4,858
Geo. M. Taylor, Republican.....	4,766
Thomas E. Thomas, Progressive.....	3,691
F. D. Hahnenkratt, Socialist.....	721
Charles Edward Thomas Manning, Socialist.....	622
Frank D. Warren, Socialist.....	750
Puffer over Sinton.....	1,111
Stewart over Sinton.....	283
Taylor over Sinton.....	191

ABSTRACT OF VOTES CAST AT A GENERAL ELECTION HELD ON TUESDAY, NOVEMBER 3, A. D. 1914, FOR REPRESENTATIVE IN THE TWENTIETH GENERAL ASSEMBLY, FROM THE COUNTY OF FREMONT.

COUNTY	Allen Bell (Dem.)	Geo. E. Colgate (Rep.)	J. Homer Dickson (Prog.)	Genevieve Gould Battey (Soc.)
Fremont .....	2,214	2,454	430	358
Colgate over Bell.....			240	

## ABSTRACT OF VOTES CAST

ABSTRACT OF VOTES CAST AT A GENERAL ELECTION HELD ON TUESDAY, NOVEMBER 3, A. D. 1914, FOR REPRESENTATIVE IN THE TWENTIETH GENERAL ASSEMBLY FROM THE COUNTIES OF GARFIELD AND RIO BLANCO.

COUNTIES	Willis S. Montgomery (Dem.)	John L. Noonan (Rep.)
Garfield .....	1,239	1,990
Rio Blanco .....	581	388
	<hr/>	<hr/>
	1,820	2,378
Noonan's majority.....		558

ABSTRACT OF VOTES CAST AT A GENERAL ELECTION HELD ON TUESDAY, NOVEMBER 3, A. D. 1914, FOR REPRESENTATIVE IN THE TWENTIETH GENERAL ASSEMBLY, FROM THE COUNTY OF GILPIN.

COUNTY	Henry C. Bolsinger (Dem.)	William L. Kirk (Prog.)	William C. Mathews (Rep.)
Gilpin .....	532	256	414
Bolsinger over Mathews.....			118

ABSTRACT OF VOTES CAST AT A GENERAL ELECTION HELD ON TUESDAY, NOVEMBER 3, A. D. 1914, FOR REPRESENTATIVE IN THE TWENTIETH GENERAL ASSEMBLY, FROM THE COUNTY OF GUNNISON.

COUNTY	W. Scott Humason (Rep.)	James A. McElroy (Dem.)	Lewis H. Easterly (Soc.)
Gunnison .....	1,117	741	449
Humason over McElroy.....			376



ABSTRACT OF VOTES CAST

ABSTRACT OF VOTES CAST AT A GENERAL ELECTION HELD ON TUESDAY, NOVEMBER 3, A. D. 1914, FOR REPRESENTATIVE IN THE TWENTIETH GENERAL ASSEMBLY FROM THE COUNTIES OF ARCHULETA, HINSDALE AND MINERAL.

COUNTIES	A. M. Collins (Rep.)	James J. O'Rourke (Dem.)	Owen McDermat (Soc.)
Archuleta .....	334	645	..
Hinsdale .....	128	122	..
Mineral .....	339	109	5
	<hr/>	<hr/>	<hr/>
	801	876	5
O'Rourke over Collins.....			75

ABSTRACT OF VOTES CAST AT A GENERAL ELECTION HELD ON TUESDAY, NOVEMBER 3, A. D. 1914, FOR REPRESENTATIVE IN THE TWENTIETH GENERAL ASSEMBLY FROM THE COUNTIES OF HUERFANO AND COSTILLA.

COUNTIES	J. P. Campbell (Dem.-Prog.)	J. P. Gallegos (Rep.)
Huerfano .....	2,106	2,479
Costilla .....	517	680
	<hr/>	<hr/>
	2,623	3,159
Gallegos' majority.....		536

## ABSTRACT OF VOTES CAST

ABSTRACT OF VOTES CAST AT A GENERAL ELECTION HELD ON TUESDAY, NOVEMBER 3, A. D. 1914, FOR REPRESENTATIVE IN THE TWENTIETH GENERAL ASSEMBLY, FROM THE COUNTY OF JEFFERSON.

COUNTY	John Grattan (Prog.)	Wesley Staley (Dem.)	Charles C. Welch (Rep.)	D. B. Kirkman (Soc.)
Jefferson .....	562	2,283	1,956	257
Haley over Welch.....				327

ABSTRACT OF VOTES CAST AT A GENERAL ELECTION HELD ON TUESDAY, NOVEMBER 3, A. D. 1914, FOR REPRESENTATIVE IN THE TWENTIETH GENERAL ASSEMBLY FROM THE COUNTIES OF KIOWA AND BENT.

COUNTIES	Eoon Best (Dem.)	W. A. Hasty (Rep.-Prog.)
Kiowa .....	889	506
Bent .....	809	939
	1,698	1,445
Best's majority .....		253

ABSTRACT OF VOTES CAST AT A GENERAL ELECTION HELD ON TUESDAY, NOVEMBER 3, A. D. 1914, FOR REPRESENTATIVE IN THE TWENTIETH GENERAL ASSEMBLY, FROM THE COUNTY OF LAKE.

COUNTY	Winters Morrell (Rep.-Prog.)	Fred J. McNair (Dem.)	E. W. McClintock (Soc.)
Lake .....	1,415	1,873	323
McNair over Morrell.....			458

ABSTRACT OF VOTES CAST

ABSTRACT OF VOTES CAST AT A GENERAL ELECTION HELD ON TUESDAY, NOVEMBER 3, A. D. 1914, FOR REPRESENTATIVE IN THE TWENTIETH GENERAL ASSEMBLY, FROM THE COUNTY OF LA PLATA.

COUNTY	Wm. C. Jemmlson (Dem.)	Jno. H. McDevitt, Jr. (Rep.)
La Plata .....	1,259	1,973
McDevitt, Jr.'s majority .....		714

ABSTRACT OF VOTES CAST AT A GENERAL ELECTION HELD ON TUESDAY, NOVEMBER 3, A. D. 1914, FOR REPRESENTATIVE IN THE TWENTIETH GENERAL ASSEMBLY, FROM THE COUNTY OF LARIMER.

COUNTY	P. D. Nelson (Rep.-Prog.)	Abram C. Van Galder (Dem.)	Clyde Karnes (Soc.)
Larimer .....	3,287	2,411	452
Nelson over Van Galder .....			876

ABSTRACT OF VOTES CAST AT A GENERAL ELECTION HELD ON TUESDAY, NOVEMBER 3, A. D. 1914, FOR REPRESENTATIVES IN THE TWENTIETH GENERAL ASSEMBLY, FROM THE COUNTY OF LAS ANIMAS. (TWO TO ELECT).

COUNTY	John Mayer (Rep.)	F. E. Nelson (Dem.)	J. B. Proctor (Prog.)	H. A. Schmidt (Rep.)	Meliton R. Vasquez (Dem.)	Callie Harper (Soc.)	F. B. McGregor (Soc.)
Las Animas...	4,228	3,793	366	3,905	3,522	323	297
Mayer over Nelson .....						435	
Schmidt over Nelson .....						112	