

STATE OF COLORADO

Abstract of Votes Cast

AT THE

Primary Election

Held on the Eighth Day of September
A. D. 1914

AND AT THE

General Election

Held on Third Day of November.
A. D. 1914

FOR

United States Senators, Congressmen, and State,
Legislative and District Officers

ALSO THE

Proposed Constitutional Amendments
Initiated and Referred Measures

COMPILED FROM OFFICIAL RETURNS

BY

JOHN E. RAMER
Secretary of State

1915



DENVER, COLORADO

ABSTRACT OF VOTES CAST

ABSTRACT OF VOTES CAST AT A PRIMARY ELECTION HELD ON
TUESDAY, SEPTEMBER 8, A. D. 1914, FOR STATE TREASURER.

COUNTY	James B. Orman (Dem.)	W. W. Rowan (Dem.)	Roady Kenehan (Dem.)	Allison Stocker (Rep.)	Lewis C. Greenlee (Rep.)	F. L. Cretney (Prog.)
Adams	411	158	442	75	55	46
Alamosa	161	84	205	151	89	30
Arapahoe	284	96	306	127	110	252
Archuleta	41	17	52	53	88	8
Baca	105	31	48	118	73	5
Bent	157	28	61	77	48	39
Boulder	566	200	708	736	706	91
Chaffee	146	88	161	101	57	11
Cheyenne	95	96	93	132	159	1
Clear Creek.. . . .	165	59	222	128	142	12
Conejos	136	39	127	265	148	2
Costilla	47	18	22	110	245	4
Crowley	283	70	75	80	70	4
Custer	124	37	71	17	25	7
Delta	169	103	108	179	100	300
Denver	2,396	1,445	5,200	3,644	5,790	1,763
Dolores	41	22	61	2	2	6
Douglas	78	21	67	130	107	3
Eagle	157	69	201	134	118	28
Elbert	55	32	74	79	75	4
El Paso.....	693	284	776	894	783	465
Fremont	298	94	369	411	272	69
Garfield	445	137	382	131	142	27
Gilpin	73	27	140	57	45	6
Grand	45	5	26	96	75	3
Gunnison	122	83	216	94	80	4
Hinsdale	12	18	8	36	36	...
Huerfano	143	41	523	967	260	39
Jackson	16	1	6	39	29	3
Jefferson	190	76	382	634	665	84
Kiowa	116	16	20	67	22	30
Kit Carson.. . . .	173	85	165	165	129	50

ABSTRACT OF VOTES CAST

ABSTRACT OF VOTES CAST AT A PRIMARY ELECTION HELD ON
TUESDAY, SEPTEMBER 8, A. D. 1914, FOR STATE TREASURER.
—Continued.

COUNTIES	James B. Orman (Dem.)	W. W. Rowan (Dem.)	Roady Kenchan (Dem.)	Allison Stocker (Rep.)	Lewis C. Greenlee (Rep.)	F. L. Cretney (Prog.)
Lake	145	76	472	382	246	42
La Plata....	235	159	357	228	175	14
Larimer	267	67	133	642	488	135
Las Animas.	336	108	1,591	996	831	45
Lincoln	135	76	108	343	260	11
Logan	128	61	205	321	229	150
Mesa	207	151	289	170	119	198
Mineral	29	9	68	22	23	...
Moffat	45	24	18	70	42	6
Montezuma .	357	111	254	42	39	7
Montrose ...	353	255	242	201	162	22
Morgan	64	31	66	312	408	69
Otero	569	290	292	271	281	29
Ouray	48	264	101	70	64	4
Park	128	34	104	46	47	3
Phillips	49	32	61	103	54	43
Pitkin	112	53	222	48	26	15
Prowers	148	33	69	155	143	121
Pueblo	3,453	314	1,429	1,609	1,169	80
Rio Blanco..	103	22	40	38	37	2
Rio Grande.	84	51	64	174	181	11
Routt	169	45	112	80	71	12
Saguache ...	116	52	112	155	123	8
San Juan...	17	33	52	64	59	11
San Miguel.	217	165	206	73	82	4
Sedgwick ..	30	10	19	54	30	142
Summit	86	40	92	34	27	1
Teller	996	620	1,152	115	151	111
Washington	129	96	108	125	62	22

ABSTRACT OF VOTES CAST

ABSTRACT OF VOTES CAST AT A PRIMARY ELECTION HELD ON
TUESDAY, SEPTEMBER 8, A. D. 1914, FOR STATE TREASURER.—
Continued.

COUNTIES	James B. Orman (Dem.)	W. W. Rowan (Dem.)	Roady Kenehan (Dem.)	Allison Stocker (Rep.)	Lewis C. Greenlee (Rep.)	F. L. Cretney (Prog.)
Weld	401	158	310	765	823	294
Yuma	132	89	81	165	191	36
Totals ...	17,231	7,109	19,746	17,802	17,388	5,044

Scattering, Democratic, 1 candidate, 3.

Kenehan over Orman.....2,515
Stocker over Greenlee 414

ABSTRACT OF VOTES CAST

ABSTRACT OF VOTES CAST AT A PRIMARY ELECTION HELD ON
TUESDAY, SEPTEMBER 8, A. D. 1914, FOR ATTORNEY GENERAL.

COUNTIES	Fred Farrar (Dem.)	John I. Mullins (Dem.)	T. S. McChesney (Dem.)	Wm. B. Gobin (Rep.)	Floyd E. Pendell (Rep.)	Rees D. Rees (Rep.)	Merle D. Vincent (Prog.)
Adams	590	305	49	39	39	45	44
Alamosa	253	135	31	124	56	63	32
Arapahoe	386	200	50	80	40	96	259
Archuleta	90	4	18	36	26	77	8
Baca	100	55	31	111	44	38	5
Bent	186	36	23	84	22	20	38
Boulder	820	419	147	409	767	281	106
Chaffee	224	117	29	69	29	49	9
Cheyenne	165	70	33	133	70	82	...
Clear Creek	227	138	44	112	57	92	11
Conejos	179	71	24	201	93	133	1
Costilla	66	14	6	80	26	243	4
Crowley	300	83	40	133	10	18	4
Custer	115	55	28	23	7	12	7
Delta	254	74	24	126	92	49	377
Denver	3,896	4,644	513	2,353	1,217	5,025	1,934
Dolores	69	22	5	1	3	2	7
Douglas	103	34	14	117	39	64	4
Eagle	230	101	46	84	72	78	28
Elbert	94	52	11	60	21	75	4
El Paso	864	464	210	956	322	299	541
Fremont	396	201	69	306	161	204	68
Garfield	505	265	81	77	49	135	29
Gilpin	106	76	27	33	30	41	9
Grand	50	16	6	63	39	57	3
Gunnison	195	138	30	84	44	45	5
Hinsdale	24	8	...	42	8	12	...
Huerfano	198	305	158	950	120	126	41
Jackson	18	1	3	35	15	14	3
Jefferson	365	210	39	293	561	423	91
Kiowa	131	16	2	52	26	9	29
Kit Carson	254	112	41	122	77	91	52

ABSTRACT OF VOTES CAST AT A PRIMARY ELECTION HELD ON
TUESDAY, SEPTEMBER 8, A. D. 1914, FOR ATTORNEY GENERAL
—Continued.

COUNTIES	Fred Farrar (Dem.)	John I. Mullins (Dem.)	T. S. McChesney (Dem.)	Wm. B. Gobin (Rep.)	Floyd E. Pendell (Rep.)	Rees D. Rees (Rep.)	Merle D. Vincent (Prog.)
Lake	231	377	29	254	119	214	42
La Plata	397	215	88	170	88	149	13
Larimer	421	49	13	395	406	249	142
Las Animas....	255	268	1,486	1,003	334	493	41
Lincoln	195	86	32	257	189	142	12
Logan	196	141	28	195	255	79	163
Mesa	370	153	49	125	68	84	228
Mineral	69	15	7	19	6	16	...
Moffat	55	16	10	67	25	19	6
Montezuma ...	427	152	69	37	24	15	8
Montrose	455	222	67	159	98	100	31
Morgan	116	30	8	93	735	67	69
Otero	777	201	119	411	121	67	32
Ouray	198	95	23	61	23	47	4
Park	154	89	15	38	23	32	4
Phillips	84	39	10	62	66	28	41
Pitkin	199	91	39	32	17	21	16
Prowers	166	26	37	201	42	74	114
Pueblo	2,637	1,391	492	1,399	478	892	86
Rio Blanco....	89	36	15	24	38	12	2
Rio Grande....	157	19	13	134	122	95	10
Routt	201	47	51	66	36	39	10
Saguache	179	61	20	154	79	49	11
San Juan	59	21	12	54	25	38	13
San Miguel....	359	132	46	75	42	36	5
Sedgwick	35	18	4	37	24	22	143
Summit	133	57	9	25	7	20	2
Teller	1,496	703	314	92	62	101	112
Washington ...	230	68	34	89	55	36	23

ABSTRACT OF VOTES CAST

ABSTRACT OF VOTES CAST AT A PRIMARY ELECTION HELD ON
TUESDAY, SEPTEMBER 8, A. D. 1914, FOR ATTORNEY GENERAL.
—Continued.

COUNTIES	Fred Farrar (Dem.)	John I. Mullins (Dem.)	T. S. McChesney (Dem.)	Wm. B. Gobin (Rep.)	Floyd E. Pendell (Rep.)	Rees D. Rees (Rep.)	Merle D. Vincent (Prog.)
Weld	578	212	62	703	472	407	318
Yuma	186	80	28	152	99	68	37
Totals	22,557	13,551	5,061	13,971	8,360	11,709	5,491
Scattering, Democratic, 3 candidates, 3							
Scattering, Republican, 2 candidates, 2							
Farrar over Mullins.....9,006							
Gobin over Rees.....2,262							

ABSTRACT OF VOTES CAST AT A PRIMARY ELECTION HELD ON
TUESDAY, SEPTEMBER 8, A. D. 1914, FOR SUPERINTENDENT OF
PUBLIC INSTRUCTION.

COUNTIES	Mary C. C. Bradford (Dem.)	Katherine L. Craig (Rep.)	Florence E. Dick (Prog.)	Mary E. Todd (Prog.)
Adams	891	123	21	25
Alamosa	371	233	19	13
Arapahoe	568	215	170	102
Archuleta	91	132	1	5
Baca	186	203	4	...
Bent	214	120	27	10
Boulder	1,289	1,389	77	37
Chaffee	348	157	4	5
Cheyenne	260	285	1	...
Clear Creek	353	263	5	6
Conejos	246	415	1	...
Costilla	78	333	3	1
Crowley	358	156	5	1
Custer	196	46	8	...
Delta	326	285	208	95
Denver	6,415	7,684	1,132	812
Dolores	113	4	2	5
Douglas	153	231	3	...
Eagle	314	245	22	6
Elbert	148	167	1	3
El Paso	1,497	1,619	364	141
Fremont	589	673	44	25
Garfield	822	246	21	11
Gilpin	181	104	5	4
Grand	67	148	1	1
Gunnison	342	189	3	2
Hinsdale	36	56
Huerfano	626	1,194	26	11
Jackson	24	66	...	3
Jefferson	581	1,286	66	31
Kiowa	152	82	19	13

ABSTRACT OF VOTES CAST AT A PRIMARY ELECTION HELD ON
TUESDAY, SEPTEMBER 8, A. D. 1914, FOR SUPERINTENDENT OF
PUBLIC INSTRUCTION.—Continued.

COUNTIES	Mary C. C. Bradford (Dem.)	Katherine L. Craig (Rep.)	Florence E. Dick (Prog.)	Mary E. Todd (Prog.)
Kit Carson	416	298	30	24
Lake	542	570	30	14
La Plata	630	411	10	4
Larimer	420	1,134	91	59
Las Animas	1,766	1,775	33	18
Lincoln	312	586	5	6
Logan	361	545	88	88
Mesa	560	279	142	71
Mineral	81	43
Moffat	85	110	4	1
Montezuma	637	79	9	1
Montrose	704	386	23	4
Morgan	153	699	44	23
Otero	983	552	22	11
Ouray	273	132	2	4
Park	242	89	2	1
Phillips	143	144	35	12
Pitkin	313	74	10	5
Prowers	219	283	80	43
Pueblo	3,907	2,570	59	27
Rio Blanco	145	74	3	...
Rio Grande	179	356	7	4
Routt	265	147	4	4
Saguache	242	272	10	2
San Juan	77	101	8	3
San Miguel	479	146	4	3
Sedgwick	57	94	127	46
Summit	188	55	...	2
Teller	2,159	276	86	33
Washington	343	172	17	7

ABSTRACT OF VOTES CAST AT A PRIMARY ELECTION HELD ON TUESDAY, SEPTEMBER 8, A. D. 1914, FOR SUPERINTENDENT OF PUBLIC INSTRUCTION.—Continued.

COUNTIES	Mary C. C. Bradford (Dem.)	Katherine L. Craig (Rep.)	Florence E. Dick (Prog.)	Mary E. Todd (Prog.)
Weld	795	1,613	212	109
Yuma	293	369	33	9
	<hr/>	<hr/>	<hr/>	<hr/>
	35,804	32,783	3,493	2,006

Scattering, Democratic, 23 candidates, 29

Scattering, Republican, 11 candidates, 14

Scattering, Progressive, 4 candidates, 5

Dick over Todd..... 1,487

ABSTRACT OF VOTES CAST AT A PRIMARY ELECTION HELD ON
TUESDAY, SEPTEMBER 8, A. D. 1914, FOR REGENTS OF THE UNI-
VERSITY OF COLORADO, FOR THE FULL TERM.

COUNTY	Minnie L. Harding (Dem.)	E. D. Webb (Dem.)	Clifford C. Parks (Rep.)	Thomas L. Wilkinson (Rep.)	Randolph Cook (Prog.)	E. Stewart (Prog.)
Adams	719	...	79	36	42	...
Alamosa ...	319	...	162	70	28	...
Arapahoe ...	434	2	151	102	239	...
Archuleta ..	81	...	62	72
Baca	171	...	152	101	5	...
Bent	186	...	93	69	35	...
Boulder	1,099	64	1,164	923	96	...
Chaffee	330	...	114	54	8	...
Cheyenne ...	233	...	173	145
Clear Creek..	297	...	185	68	11	...
Conejos	210	...	301	156
Costilla	75	...	301	144
Crowley	304	...	130	90	4	...
Custer	167	...	31	21	6	...
Delta	288	...	191	131	287	...
Denver	5,109	2	5,184	5,329	1,683	...
Dolores	85	...	2	4	5	...
Douglas	135	...	179	117	3	...
Eagle	322	...	194	108	23	...
Elbert	135	...	124	91	4	...
El Paso	1,271	...	1,258	838	410	...
Fremont ...	536	...	445	408	59	...
Garfield	709	...	241	112	26	...
Gilpin	156	...	61	43	10	...
Grand	68	...	118	43	3	...
Gunnison ...	293	...	141	86	5	...
Hinsdale ...	33	...	47	30
Huerfano ...	582	...	984	835	30	...
Jackson	23	...	50	21	3	...
Jefferson ...	504	...	925	716	85	...
Kiowa	138	...	73	46	31	...

ABSTRACT OF VOTES CAST

ABSTRACT OF VOTES CAST AT A GENERAL ELECTION HELD ON TUESDAY, SEPTEMBER 8, A. D. 1914, FOR REGENTS OF THE UNIVERSITY OF COLORADO, FOR THE FULL TERM.—Continued.

COUNTY	Minnie L. Harding (Dem.)	E. D. Webb (Dem.)	Clifford C. Parks (Dem.)	Thomas L. Wilkinson (Rep.)	Randolph Cook (Prog.)	C. E. Stewart (Prog.)
Kit Carson..	366	...	183	169	52	...
Lake	470	...	412	279	39	...
La Plata....	76	...	318	205	12	...
Larimer	366	...	762	586	133	...
Las Animas..	1,658	...	1,346	422	46	...
Lincoln	296	...	435	309	10	...
Logan	331	...	417	191	150	3
Mesa	490	...	251	107	199	...
Mineral	68	...	34	7
Moffat	75	...	75	48	5	...
Montezuma...	545	...	48	34	8	...
Montrose ...	642	...	257	107	25	...
Morgan	135	...	537	312	63	22
Otero	875	...	441	354	30	...
Ouray	234	...	95	53	3	...
Park	210	...	65	50	3	...
Phillips	130	...	117	67	36	...
Pitkin	247	...	63	39	15	...
Prowers	213	...	245	174	115	...
Pueblo	3,543	...	2,155	1,601	77	...
Rio Blanco...	135	...	70	29	3	...
Rio Grande..	149	...	248	174	9	...
Routt	229	...	122	71	7	...
Saguache ...	234	...	208	133	9	...
San Juan....	74	...	83	58	11	...
San Miguel..	426	...	114	25	2	...
Sedgwick ..	48	...	64	36	137	...
Summit	167	...	49	27	1	...
Teller	1,781	...	212	162	97	...
Washington..	304	...	135	65	22	...

ABSTRACT OF VOTES CAST AT A PRIMARY ELECTION HELD ON
TUESDAY, SEPTEMBER 8, A. D. 1914, FOR REGENTS OF THE UNI-
VERSITY OF COLORADO, FOR THE FULL TERM.—Continued.

COUNTY	Minnie L. Harding (Dem.)	E. D. Webb (Dem.)	Clifford C. Parks (Rep.)	Thomas L. Wilkinson (Rep.)	Randolph Cook (Prog.)	C. E. Stewart (Prog.)
Weld	705	...	1,240	983	289	...
Yuma	256	...	228	80	30	4
	<hr/> 30,490	<hr/> 68	<hr/> 24,344	<hr/> 17,966	<hr/> 4,777	<hr/> 29

Scattering, Democratic, 99 candidates, 187

Scattering, Republican, 20 candidates, 35

Scattering, Progressive, 25 candidates, 69

ABSTRACT OF VOTES CAST AT A PRIMARY ELECTION HELD ON TUESDAY, SEPTEMBER 8, A. D. 1914, FOR REGENT OF THE UNIVERSITY OF COLORADO, TO FILL VACANCY.

COUNTIES	E. D. Webb (Dem.)	Walter M. Appel (Dem.)	A. D. Parker (Rep.)	Thomas L. Wilkinson (Rep.)	Chas. R. Dudley (Rep.)	C. E. Stewart (Prog.)	Randolph Cook (Prog.)
Boulder	127	...	64
Denver	8	5	...	31	19	5	5
Jefferson	1	...
Logan	6	...
Pueblo	2
Routt	20
Washington	4	...
	155	5	66	31	19	16	5

Scattering, Democratic, 103 candidates, 196

Scattering, Republican, 112 candidates, 202

Scattering, Progressive, 36 candidates, 48

There having been no candidates designated, the above were written in by the voters, which accounts for so few counties shown as having made returns.

ABSTRACT OF VOTES CAST

ABSTRACT OF VOTES CAST AT A GENERAL ELECTION HELD ON
TUESDAY, NOVEMBER 3, A. D. 1914, FOR DISTRICT JUDGE, OF
TWELFTH JUDICIAL DISTRICT (TO FILL VACANCY).

COUNTIES	John S. Palmer (Law)	Jesse C. Wiley (Ind.)
Alamosa	707	642
Conejos	854	846
Costilla	557	273
Mineral	142	240
Rio Grande	660	1,279
Saguache	878	761
Totals.....	3,798	4,041
Majority for Wiley over Palmer.....		243

ABSTRACT OF VOTES CAST AT A GENERAL ELECTION HELD ON
TUESDAY, NOVEMBER 3, A. D. 1914, FOR STATE SENATORS FROM
THE FIRST SENATORIAL DISTRICT.

City and County of Denver.

Julius Aichele, Democratic	15,148
T. J. Brown, Socialist.....	3,660
Frank L. Dodge, Republican.....	25,476
William R. Eaton, Republican.....	25,283
Harvey E. Garman, no ass'by.....	5,483
Charles B. Hamilton, Democratic.....	22,796
Barney Haughey, no ass'by.....	702
John Hecker, L., O. and J.....	3,125
John E. Holmberg, Republican.....	22,182
Hattie K. Howard, Progressive.....	6,732
Francis J. Knauss, Republican	24,029
Charles N. Knowles, Progressive	9,022
Nicholas Ludwig, no ass'by.....	2,130
Phillip McCarty, Democratic	17,055
Martin H. Mitchell, Democratic	16,469
John Nitsch, Socialist.....	2,913
Maude E. Sanders, Progressive	8,051
John A. Sells, Socialist	2,750
Chester E. Smedley, Progressive	10,588
Fred Underhill, Socialist	3,202
Dodge over Holmberg.....	3,294
Eaton over Holmberg.....	3,101
Knauss over Holmberg.....	1,847
Hamilton over Holmberg.....	614

ABSTRACT OF VOTES CAST

ABSTRACT OF VOTES CAST AT A GENERAL ELECTION HELD ON
TUESDAY, NOVEMBER 3, A. D. 1914, FOR STATE SENATOR FROM
THE SECOND SENATORIAL DISTRICT.

COUNTY	H. G. DeTienne (Dem.)	Wilkins O. Peterson (Rep.)	C. B. Anthony (Soc.)
Pueblo	4,955	6,906	701
Peterson over De Tienne.....		1,951	

ABSTRACT OF VOTES CAST AT A GENERAL ELECTION HELD ON
TUESDAY, NOVEMBER 3, A. D. 1914, FOR STATE SENATOR FROM
THE THIRD SENATORIAL DISTRICT.

COUNTY	David Elliott (Rep.)	John T. Kavanaugh (Dem.)	C. A. Lemmers (Prog.)	M. J. Acton (Soc.)
El Paso	5,298	4,215	3,435	731
Elliott over Kavanaugh.....			1,083.	

ABSTRACT OF VOTES CAST AT A GENERAL ELECTION HELD ON TUESDAY, NOVEMBER 3, A. D. 1914, FOR STATE SENATOR FROM THE SIXTH SENATORIAL DISTRICT.

COUNTIES	William J. Candlish (Rep.-Prog.)	Walter L. Philbin (Dem.)
Chaffee	1,391	1,393
Lake	1,806	1,638
	3,197	3,031
Candlish's majority		166

ABSTRACT OF VOTES CAST AT A GENERAL ELECTION HELD ON TUESDAY, NOVEMBER 3, A. D. 1914, FOR STATE SENATOR FROM THE SEVENTH SENATORIAL DISTRICT.

COUNTY	B. F. Early (Dem.)	James W. Gault (Prog.)	Robert E. Winbourne (Rep.)	N. N. Westfall (Soc.)
Weld	3,969	1,478	5,502	500
Winbourne over Early				1,533

ABSTRACT OF VOTES CAST

ABSTRACT OF VOTES CAST AT A GENERAL ELECTION HELD ON TUESDAY, NOVEMBER 3, A. D. 1914, FOR STATE SENATOR FROM THE TENTH SENATORIAL DISTRICT.

COUNTY	Fred W. Stow (Dem.)	C. F. Wilkin (Rep.-Prog.)	J. H. Mayfield (Soc.)
Larimer	2,631	3,271	444
Wilkin over Stow.....		640	

ABSTRACT OF VOTES CAST AT A GENERAL ELECTION HELD ON TUESDAY, NOVEMBER 3, A. D. 1914, FOR STATE SENATOR FROM THE TWELFTH SENATORIAL DISTRICT.

COUNTIES	Clarence O. Finch (Dem.)	Henry A. Klingner (Prog.)	O. L. Mitten (Rep.)
Logan	1,304	303	1,433
Phillips	439	125	521
Sedgwick	358	168	406
Washington	691	195	853
Yuma	964	707	1,141
	<hr/>	<hr/>	<hr/>
	3,756	1,498	4,354
Mitten over Finch.....		598	

ABSTRACT OF VOTES CAST

ABSTRACT OF VOTES CAST AT A GENERAL ELECTION HELD ON TUESDAY, NOVEMBER 3, A. D. 1914, FOR STATE SENATOR FROM THE FOURTEENTH SENATORIAL DISTRICT.

COUNTIES	Charles Hayden (Rep.)	A. D. Mackenzie (Dem.-Prog.)
Costilla	729	356
Custer	315	589
Huerfano	2,348	2,132
	<hr/>	<hr/>
	3,392	3,077
Hayden's majority	315	

ABSTRACT OF VOTES CAST AT A GENERAL ELECTION HELD ON TUESDAY, NOVEMBER 3, A. D. 1914, FOR STATE SENATOR FROM THE FIFTEENTH SENATORIAL DISTRICT.

COUNTIES	Frank H. Means (Rep.)	Byron A. Roloson (Dem.)
Mineral	147	210
Rio Grande	1,182	881
Saguache	1,102	715
	<hr/>	<hr/>
	2,431	1,806
Means' majority	625	

ABSTRACT OF VOTES CAST

ABSTRACT OF VOTES CAST AT A GENERAL ELECTION HELD ON TUESDAY, NOVEMBER 3, A. D. 1914, FOR STATE SENATOR FROM THE SIXTEENTH SENATORIAL DISTRICT.

COUNTY	Erman W. Kluge (Dem.)	Avery C. Newton (Prog.)	F. Barnard Welsh (Rep.)	E. M. Cline (Soc.)
Mesa	2,522	1,543	1,375	929
Kluge over Newton.....				979

ABSTRACT OF VOTES CAST AT A GENERAL ELECTION HELD ON TUESDAY, NOVEMBER 3, A. D. 1914, FOR STATE SENATOR FROM THE SEVENTEENTH SENATORIAL DISTRICT.

COUNTIES	Fred Schermerhorn (Dem.)	S. Wonder (Rep.)
Dolores	141	65
Montrose	1,755	1,728
San Miguel	943	810
	<hr/>	<hr/>
	2,839	2,603
Schermerhorn's majority		236

ABSTRACT OF VOTES CAST

ABSTRACT OF VOTES CAST AT A GENERAL ELECTION HELD ON TUESDAY, NOVEMBER 3, A. D. 1914, FOR STATE SENATOR FROM THE EIGHTEENTH SENATORIAL DISTRICT.

COUNTIES	Herbert E. Curran (Rep.)	John H. Slattery (Dem.)
Archuleta	453	464
Hinsdale	127	115
Ouray	781	519
San Juan	436	433
	<hr/>	<hr/>
	1,797	1,531
Curran's majority		266

ABSTRACT OF VOTES CAST AT A GENERAL ELECTION HELD ON TUESDAY, NOVEMBER 3, A. D. 1914, FOR STATE SENATOR FROM THE TWENTIETH SENATORIAL DISTRICT.

COUNTIES	George Lewis (Dem.)	Melville B. Rapp (Rep.-Prog.)	W. B. Butler (Soc.)
Park	475	367	48
Teller	3,406	1,459	437
	<hr/>	<hr/>	<hr/>
	3,881	1,826	485
Lewis over Rapp			2,055

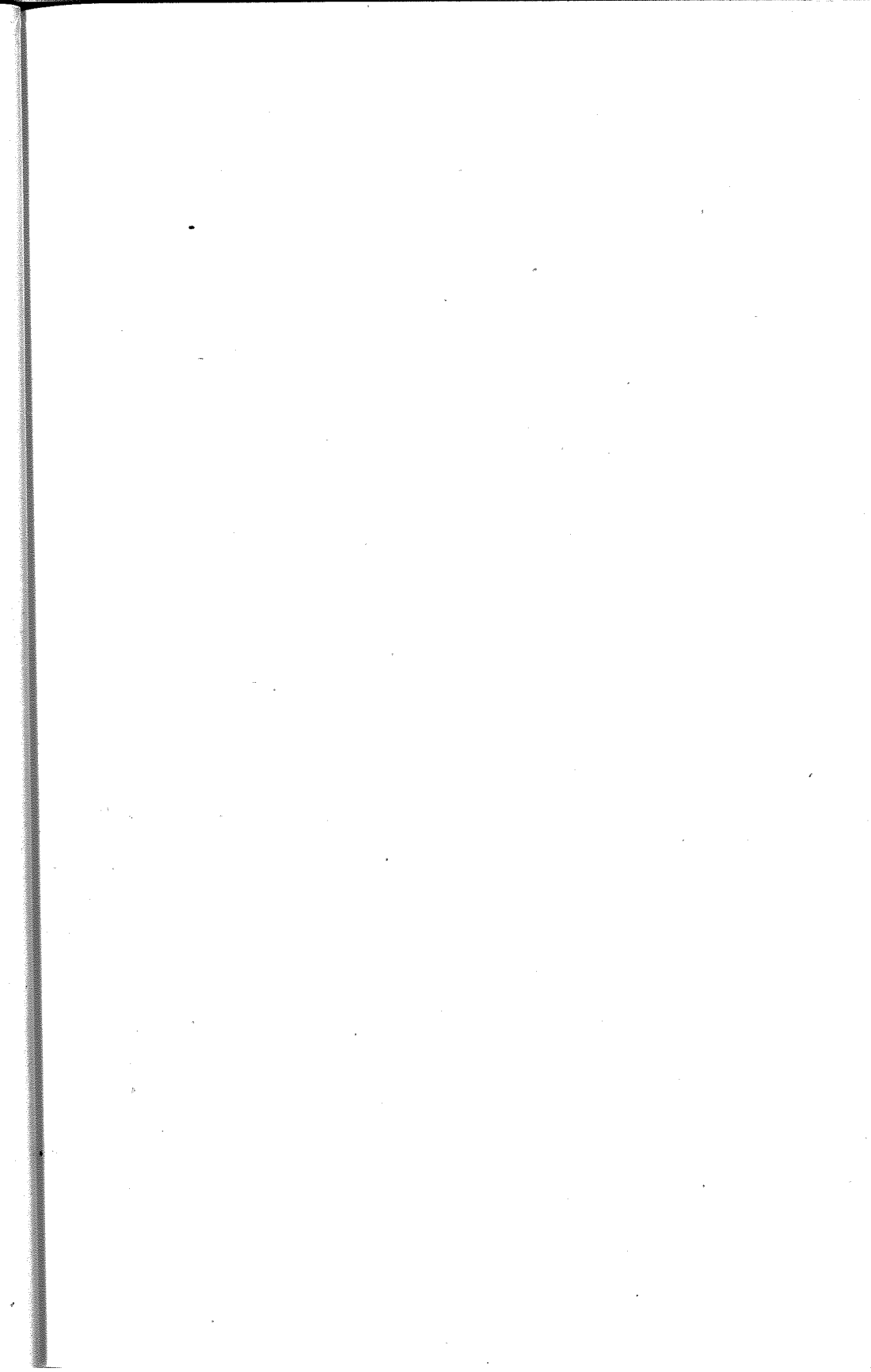
ABSTRACT OF VOTES CAST

ABSTRACT OF VOTES CAST AT A GENERAL ELECTION HELD ON
TUESDAY, NOVEMBER 3, A. D. 1914, FOR STATE SENATOR FROM
THE TWENTY-FIFTH SENATORIAL DISTRICT.

COUNTIES	John S. Hasty (Rep.)	M. M. Simpson (Dem.-Prog.)
Baca	594	510
Bent	907	826
Kiowa	573	665
Prowers	1,607	1,272
	<hr/>	<hr/>
	3,681	3,273
Hasty's majority		408

ABSTRACT OF VOTES CAST AT A GENERAL ELECTION HELD ON
TUESDAY, NOVEMBER 3, A. D. 1914, FOR STATE SENATOR FROM
THE TWENTY-SEVENTH SENATORIAL DISTRICT.

COUNTIES	W. H. Abbott (Prog.)	John F. Dickinson (Rep.)	William D. Reilly (Dem.)
Cheyenne	72	553	351
Douglas	41	556	608
Elbert	115	605	1,062
Kit Carson	437	735	615
Lincoln	123	949	929
	<hr/>	<hr/>	<hr/>
	788	3,398	3,565
Reilly over Dickinson			167



ABSTRACT OF VOTES CAST AT A GENERAL ELECTION HELD ON
TUESDAY, NOVEMBER 3, A. D. 1914, FOR REPRESENTATIVE IN
THE TWENTIETH GENERAL ASSEMBLY FROM THE CITY AND
COUNTY OF DENVER.

Joseph S. Baker, Progressive.....	14,191
Edward B. Bartholic, Socialist.....	3,359
George M. Bergen, No Ass'by.....	1,193
Morris Berkowitz, Socialist.....	3,143
Carroll M. Bills, Republican.....	25,320
Herman A. Bolster, No Ass'by.....	1,127
Rudolph Borchardt, Tax Payer.....	4,201
William T. Boyd, Progressive.....	7,350
Joseph B. Cobbs, No. Ass'by.....	1,447
Albert Gallatin Craig, Democrat.....	18,038
John F. Critchfield, Socialist.....	3,247
John Dietrich, Democrat.....	21,076
George B. Drake, Republican.....	25,388
Edward V. Dunklee, Democrat.....	23,142
James G. Edgeworth, Socialist.....	3,341
William F. Evans, Progressive.....	8,121
William Engelbert Frye, Progressive.....	7,468
Walter R. Garretson, Republican.....	17,998
James O. Garrett, Democrat.....	17,437
Harold G. Garwood, Republican.....	20,014
McLeod M. George, Progressive.....	6,405
John S. Gable, No Ass'by.....	1,223
Alby N. Gordon, Socialist.....	3,188
Randolph M. Hagerman, Republican.....	22,964
Robert Harris, Republican.....	22,216
Evangeline Heartz, Democrat.....	20,119
Axel E. Helme, No Ass'by.....	1,005
William W. Howland, Republican.....	21,264
Thomas M. Hyder, Democrat.....	15,239
John T. Joyce, Socialist.....	3,203
Jennie B. Kern, Socialist.....	2,841
Margaret W. Kessler, Progressive.....	6,719
Albert Kiefer, Socialist.....	3,146
Fred Lambert, No Ass'by.....	2,003
James Thomas Macey, Republican.....	16,992
Adrian Maguire, No Ass'by.....	2,272
Louise A. Maloney, Democrat.....	14,935

ABSTRACT OF VOTES CAST AT A GENERAL ELECTION HELD ON
TUESDAY, NOVEMBER 3, A. D. 1914, FOR REPRESENTATIVE IN
THE TWENTIETH GENERAL ASSEMBLY FROM THE CITY AND
COUNTY OF DENVER.—Continued.

Thomas F. McGovern, Democrat.....	16,656
William J. McPherson, Progressive.....	7,691
Rufus P. Means, Democrat.....	14,377
Schuyler C. Peck, Progressive.....	7,650
Burnett S. Pepper, Progressive.....	6,786
Leonard Ruehle, No Ass'by.....	1,668
Stephen W. Ryan, Democrat.....	16,279
John A. Rymer, Progressive.....	6,891
Edward M. Sabin, Republican.....	18,994
Benjamin J. Salmon, Democrat.....	17,547
Charles H. Schreiber, Progressive.....	12,706
William P. Simmington, Progressive.....	10,616
Jennie E. Smith, Socialist.....	3,310
Frank Springrose, No Ass'by.....	700
Edward W. Stuart, No Ass'by.....	991
Fred J. Taylor, No Ass'by.....	2,332
Frank D. Thompson, Republican.....	23,220
Thomas Tonge, Republican.....	19,614
Charles W. Varnum, Republican.....	17,082
Jesse Vetter, Socialist.....	3,602
John Redmond Williams, Democrat.....	17,866
Anton F. Willmer, Socialist.....	2,894
William Young, Socialist.....	3,275
Drake over Craig.....	7,350
Dunklee over Craig.....	5,104
Howland over Craig.....	3,226
Garwood over Craig.....	1,976
Bills over Craig.....	7,282
Hagerman over Craig.....	4,926
Dietrich over Craig.....	3,038
Tonge over Craig.....	1,576
Thompson over Craig.....	5,182
Harris over Craig.....	4,170
Heartz over Craig.....	2,081
Sabin over Craig.....	956

ABSTRACT OF VOTES CAST

ABSTRACT OF VOTES CAST AT A GENERAL ELECTION HELD ON TUESDAY, NOVEMBER 3, A. D. 1914, FOR REPRESENTATIVES IN THE TWENTIETH GENERAL ASSEMBLY, FROM THE COUNTY OF ADAMS.

COUNTY	James N. Counter (Dem.)	Samuel H. Morrow (Rep.-Prog.)
Adams	1,446	1,001
Counter's majority	445	

ABSTRACT OF VOTES CAST AT A GENERAL ELECTION HELD ON TUESDAY, NOVEMBER 3, A. D. 1914, FOR REPRESENTATIVES IN THE TWENTIETH GENERAL ASSEMBLY, FROM THE COUNTY OF ALAMOSA.

COUNTY	Robert M. Born (Dem.)	Perry Craig (Rep.-Prog.)
Alamosa	838	715
Born's majority	123	