

STATE OF COLORADO

# Abstract of Votes Cast

AT THE

## PRIMARY ELECTION

Held on the Tenth Day of September, A. D. 1940

AND AT THE

## GENERAL ELECTION

Held on the Fifth Day of November, A. D. 1940

FOR

Presidential Electors, Congressmen, State Legislative  
and District Officers

AND

Proposed Constitutional Amendments, Initiated  
and Referred Bills

ALSO

Directory of the United States, State Legislative,  
District and County Officers



COMPILED FROM OFFICIAL RETURNS  
BY

WALTER F. MORRISON  
Secretary of State

1940

PRICE, 50 CENTS

SECRETARY OF STATE

STATE AUDITOR

STATE TREASURER

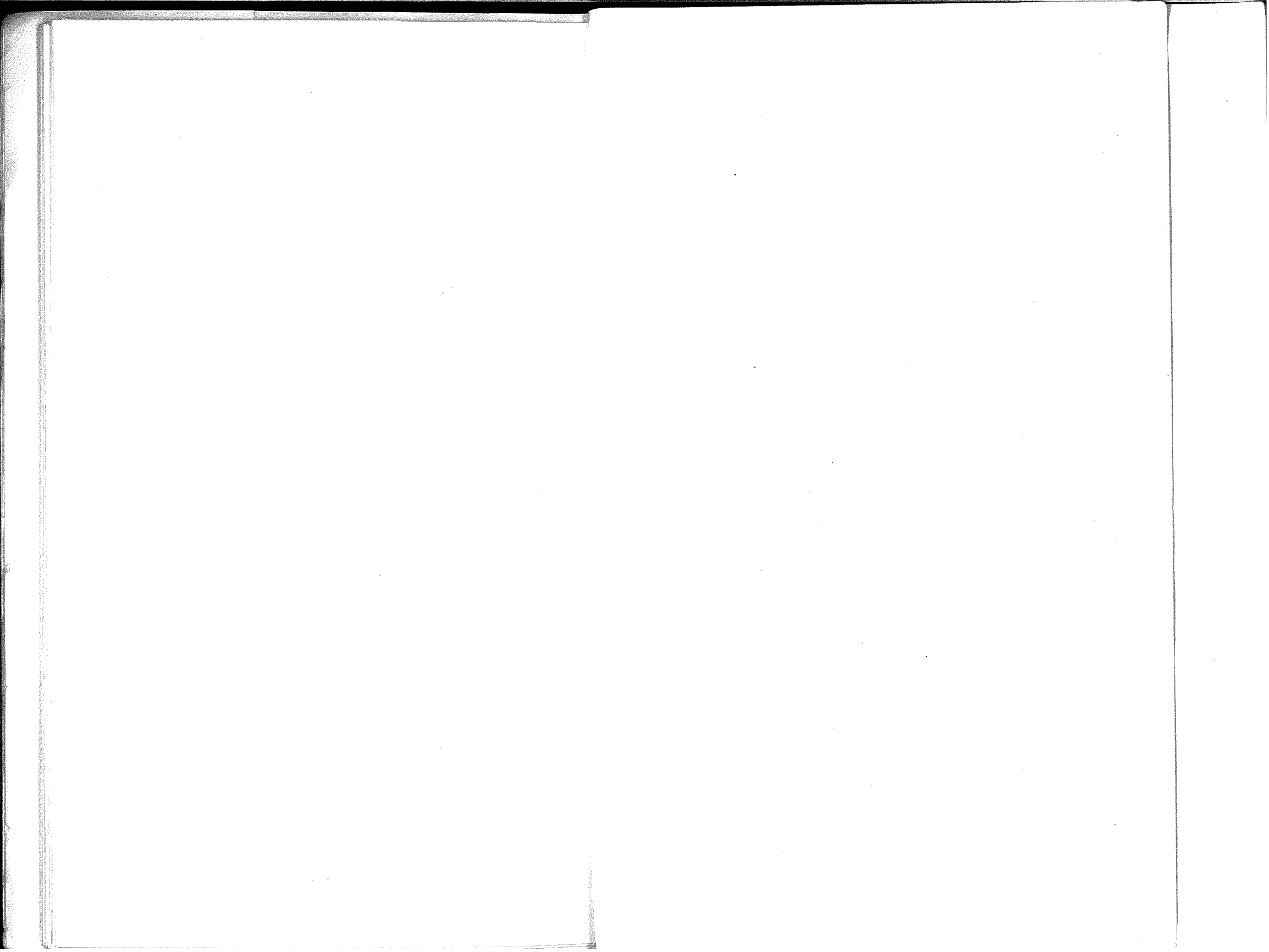
ATTORNEY GENERAL

SUPT. PUBLIC INSTRUCTION

REGENTS UNIVERSITY OF COLORADO

Table with columns for each department and rows for various individuals and their corresponding financial values. Includes sub-headers like 'Hunt Winn-Dem.', 'Walter F. Morrison-Rep.', etc., for each department.

Summary row at the bottom of each column showing total values: 45,684; 66,954; 25,173; 102,715; 91,940; 43,961; 79,049; 87,838; 107,693; 56,829; 36,014; 109,372; 85,090; 68,609; 65,831; 42,814; 23,779; 77,557; 67,679.



**CONGRESSMAN, FIRST CONGRESSIONAL DISTRICT**

County	Lawrence Lewis —D		James D. Parriott —R		George T. Evans —R	James Allander —Com.	Ward Rogers —Soc.
	P. E.	G. E.	P. E.	G. E.	P. E.	G. E.	G. E.
Denver	41,396	110,078	16,143	59,427	7,582	272	577

**CONGRESSMAN, SECOND CONGRESSIONAL DISTRICT**

County	Fred Cummings —D		William S. Hill —R		William R. Kelly —R	Robert F. Billings —Peace	Henry Neumann —Soc.
	P. E.	G. E.	P. E.	G. E.	P. E.	G. E.	G. E.
Adams	1,834	4,706	1,165	4,184	594	14	47
Arapahoe	2,344	7,435	2,184	7,518	629	22	79
Boulder	3,800	8,885	2,804	9,305	1,220	38	100
Cheyenne	339	833	367	799	109	5	6
Clear Creek	656	1,203	234	919	93	3	11
Douglas	318	846	471	1,181	77	2	8
Elbert	414	1,137	300	1,487	101	5	7
Gilpin	198	438	123	373	32	4	1
Jefferson	2,009	8,034	2,355	7,969	965	32	51
Kit Carson	459	1,185	1,339	2,306	328	12	9
Larimer	2,424	6,840	4,259	8,646	1,239	37	24
Lincoln	647	1,283	661	1,661	252	5	2
Logan	1,351	3,188	932	4,368	681	30	11
Morgan	1,616	3,119	1,189	3,805	1,179	35	8
Phillips	438	1,098	679	1,244	205	3	25
Sedgwick	291	990	507	1,328	193	3	3
Washington	958	1,388	947	2,138	441	7	8
Weld	4,188	11,870	2,886	14,678	6,725	61	63
Yuma	832	2,184	692	2,950	255	23	15
	25,116	66,662	24,094	76,859	15,318	341	478

**CONGRESSMAN, THIRD CONGRESSIONAL DISTRICT**

County	J. Edgar Chenoweth —R		Byron G. Rogers —D	
	P. E.	G. E.	P. E.	G. E.
Alamosa	308	1,923	669	1,919
Baca	533	1,434	698	1,250
Bent	476	1,605	863	2,083
Conejos	1,039	1,994	402	1,692
Costilla	91	1,102	836	1,482
Crowley	571	1,276	411	934
Custer	331	713	191	441
El Paso	4,593	16,132	4,043	13,459
Fremont	2,226	4,929	1,819	3,961
Huerfano	720	2,907	1,781	3,580
Kiowa	285	863	142	683
Las Animas	1,678	7,534	5,142	5,178
Mineral	53	214	55	256
Otero	1,122	5,006	1,675	4,368
Prowers	1,173	2,890	1,034	2,339
Pueblo	3,432	14,835	7,405	16,848
Rio Grande	409	2,842	400	1,879
Saguache	184	1,460	260	998
Teller	458	1,183	1,831	1,919
	19,351	70,842	29,657	65,269

**CONGRESSMAN, THIRD CONGRESSIONAL DISTRICT TO FILL VACANCY**

County	William E. Burney —D		Henry Leonard —R		Chas. Allen —D	W. T. Mathias —D
	P. E.	G. E.	P. E.	G. E.	P. E.	P. E.
Alamosa	2	2,332	19	2,084	243	...
Baca	...	1,216	4	1,322	...	1
Bent	23	1,783	...	1,754	...	...
Conejos	...	1,737	...	2,004	...	...
Costilla	...	1,469	...	1,064	28	...
Crowley	6	893	51	1,233	...	...
Custer	1	475	22	634	...	...
El Paso	...	12,603	319	16,524	...	...
Fremont	46	3,993	137	4,645	7	...
Huerfano	1	3,824	...	2,681	2	...
Kiowa	...	644	16	841	...	17
Las Animas	15	7,366	12	4,540	10	...
Mineral	...	250	...	211	...	...
Otero	6	4,236	84	4,952	14	...
Prowers	1	2,296	81	2,720	...	9
Pueblo	1,444	18,225	1,361	13,177	123	27
Rio Grande	...	1,954	18	2,724	27	...
Saguache	...	1,055	7	1,386	21	...
Teller	...	1,874	...	1,179	...	...
	1,545	68,225	2,631	65,675	475	54

**CONGRESSMAN, FOURTH CONGRESSIONAL DISTRICT**

County	Paul W. Crawford —R		Edward T. Taylor —D	
	P. E.	G. E.	P. E.	G. E.
Archuleta	294	576	303	649
Chaffee	372	1,428	916	2,292
Delta	908	2,557	965	3,607
Dolores	201	363	372	442
Eagle	409	1,185	705	1,334
Garfield	1,303	2,350	1,154	2,614
Grand	416	813	297	1,032
Gunnison	217	827	818	2,348
Hinsdale	35	105	57	148
Jackson	64	429	62	443
Lake	293	1,566	1,894	1,955
La Plata	517	2,740	876	3,172
Mesa	1,112	4,626	1,355	9,133
Moffat	755	1,308	556	1,079
Montezuma	730	1,548	1,358	1,919
Montrose	609	2,489	654	3,969
Ouray	44	349	116	796
Park	259	835	202	973
Rio Blanco	88	285	504	631
Routt	437	866	231	631
San Juan	785	1,688	1,525	2,908
San Miguel	59	291	343	409
Summit	188	500	681	1,037
	10,260	30,126	16,190	44,095

**STATE SENATOR, FIRST SENATORIAL DISTRICT, DENVER COUNTY**

	P. E.	G. E.
Bratton, Leslie E.—R.....	15,885	77,164
Constantine, Joseph P.—D.....	21,843	90,305
Hart, Stephen H.—D.....	25,674	96,854
Harpel, John J.—R.....	17,511	78,909
Higgins, Val—D.....	19,001	.....
Hirschfeld, A. B.—D.....	31,132	88,452
King, Harold Taft—R.....	14,790	71,786
Laws, Arthur H.—R.....	11,092	.....
Latimer, M. R.—D.....	20,995	.....
Minister, Howard L.—R.....	6,353	.....
Smith, Eudochia Bell—D.....	23,238	81,169
Smith, J. Edgar—R.....	14,208	71,248
Stackhouse, Fred D.—R.....	11,996	.....
Strong, Charles D.—D.....	20,256	.....
Andersen, Harry—Soc.....	.....	1,254
Barnetson, George K.—Soc.....	.....	886
Kinder, Francis S.—Soc.....	.....	966
Sherman, Edgar P.—Soc.....	.....	1,103

**STATE SENATOR, SECOND SENATORIAL DISTRICT**

County	Glen W. Boyce —R		Walter W. Johnson —D	
	P. E.	G. E.	P. E.	G. E.
Pueblo .....	3,203	14,556	6,901	17,079

**STATE SENATOR, THIRD SENATORIAL DISTRICT**

County	Samuel R. Berkley —D		William E. Higby —R	
	P. E.	G. E.	P. E.	G. E.
El Paso.....	3,683	13,022	4,591	16,234

**STATE SENATOR, THIRD SENATORIAL DISTRICT, TO FILL VACANCY**

County	Frederick T. Henry —D		Harry D. MacDonald —R	
	P. E.	G. E.	P. E.	G. E.
El Paso.....	3,549	12,933	4,351	15,824

**STATE SENATOR, FOURTH SENATORIAL DISTRICT**

County	Andy McDonald —R		Ben Veltri —D		H. L. L. Anderson —D		Isidor Bueno —R		Paul J. Cordova —Ind.	
	P. E.	G. E.	P. E.	G. E.	P. E.	G. E.	P. E.	G. E.	P. E.	G. E.
Las Animas.....	1,298	5,872	3,779	5,920	2,506	.....	457	.....	1,197	.....

**STATE SENATOR, FIFTH SENATORIAL DISTRICT**

County	Theo. G. Lashley —R		James R. Lord —D		Rudolph Johnson —D	
	P. E.	G. E.	P. E.	G. E.	P. E.	G. E.
Boulder .....	3,586	10,957	2,807	7,734	1,705	.....

**STATE SENATOR, SEVENTH SENATORIAL DISTRICT**

County	Walter L. Bain —R		S. K. Clark —D	
	P. E.	G. E.	P. E.	G. E.
Weld .....	8,179	15,401	.....	10,447

**STATE SENATOR, EIGHTH SENATORIAL DISTRICT**

County	Harold Ward Gardener —R		Dave C. Johnston —D		John R. Browne —R	
	P. E.	G. E.	P. E.	G. E.	P. E.	G. E.
Douglas .....	196	1,184	309	819	280	.....
Jefferson .....	1,784	8,218	1,953	8,046	1,607	.....
	1,980	9,402	2,262	8,865	1,887	.....

**STATE SENATOR, NINTH SENATORIAL DISTRICT**

County	Chas. W. F. Meyer —R		Edwin C. Watts —D	
	P. E.	G. E.	P. E.	G. E.
Custer .....	317	657	171	506
Fremont .....	2,110	4,189	1,803	4,817
	2,427	4,846	1,974	5,323

**STATE SENATOR, ELEVENTH SENATORIAL DISTRICT**

County	Robert F. Rockwell —R	
	P. E.	G. E.
Delta .....	934	5,831
Gunnison .....	227	2,463
Hinsdale .....	39	211
	1,200	8,505

**STATE SENATOR, THIRTEENTH SENATORIAL DISTRICT**

County	Charles P. Murphy —R		Ernest Todd —D	
	P. E.	G. E.	P. E.	G. E.
Grand .....	444	1,206	272	701
Jackson .....	72	750	58	158
Moffat .....	761	1,370	520	1,071
Rio Blanco.....	462	971	198	519
Routt .....	805	2,131	1,501	2,848
	2,544	6,428	2,549	5,297

**STATE SENATOR, NINETEENTH SENATORIAL DISTRICT**

County	James B. Decker —R		John W. Turner —D	
	P. E.	G. E.	P. E.	G. E.
Archuleta .....	286	710	257	698
La Plata .....	569	3,101	859	3,454
Montezuma .....	828	2,076	1,098	1,559
San Juan.....	58	314	307	466
	1,741	6,201	2,521	6,177

**STATE SENATOR, TWENTY-FIRST SENATORIAL DISTRICT**

County	Robert D. Elder —D		W. G. McDonald —R		W. H. Twinning —D
	P. E.	G. E.	P. E.	G. E.	P. E.
Eagle .....	335	1,442	384	1,016	354
Garfield .....	533	1,792	1,398	3,093	649
Lake .....	1,373	2,208	295	1,345	748
Pitkin .....	102	513	90	421	540
Summit .....	153	518	260	456	133
	<u>2,496</u>	<u>6,473</u>	<u>2,427</u>	<u>6,331</u>	<u>2,424</u>

**STATE SENATOR, TWENTY-SECOND SENATORIAL DISTRICT**

County	Harold H. Davies —R		W. J. Parrish —D		William E. Randall —Soc.
	P. E.	G. E.	P. E.	G. E.	G. E.
Arapahoe .....	2,539	7,988	2,238	6,982	126
Elbert .....	361	1,612	357	928	8
	<u>2,900</u>	<u>9,600</u>	<u>2,595</u>	<u>7,910</u>	<u>134</u>

**STATE SENATOR, TWENTY-THIRD SENATORIAL DISTRICT**

County	J. D. Craighead —D		James B. Ryan —R		James Taylor —D
	P. E.	G. E.	P. E.	G. E.	P. E.
Crowley .....	143	952	583	1,198	316
Otero .....	1,106	4,482	1,123	5,138	719
	<u>1,249</u>	<u>5,434</u>	<u>1,706</u>	<u>6,336</u>	<u>1,035</u>

**STATE SENATOR, TWENTY-FOURTH SENATORIAL DISTRICT**

County	Charles D. Minshall —D		Willard B. Preston —R	
	P. E.	G. E.	P. E.	G. E.
Adams .....	1,741	4,329	1,558	4,705
Morgan .....	1,315	2,593	1,969	4,204
	<u>3,056</u>	<u>6,922</u>	<u>3,527</u>	<u>8,909</u>

**REPRESENTATIVE, THIRTY-THIRD GENERAL ASSEMBLY, COUNTY OF ADAMS**

	P. E.	G. E.
Patton, David—D.....	1,692	4,413
Shotwell, L. D., Jr.—R.....	1,509	4,587

**REPRESENTATIVE, THIRTY-THIRD GENERAL ASSEMBLY, COUNTIES OF ALAMOSA AND COSTILLA**

County	Everett Cole —R		George Lorton —D	
	P. E.	G. E.	P. E.	G. E.
Alamosa .....	260	1,952	623	2,703
Costilla .....	96	1,127	967	1,586
	<u>356</u>	<u>3,079</u>	<u>1,590</u>	<u>4,289</u>

**REPRESENTATIVE, THIRTY-THIRD GENERAL ASSEMBLY, COUNTIES OF ARAPAHOE AND ELBERT**

	Arapahoe		Elbert		Total	
	P. E.	G. E.	P. E.	G. E.	P. E.	G. E.
Beuck, Fred A.—R.....	1,971	7,439	373	1,648	2,344	9,087
Bostrom, Emil R.—D.....	1,699	6,977	355	1,199	2,054	8,176
Glasier, John T.—D.....	2,071	7,059	338	906	2,409	7,965
Lovelace, Stuart H.—R.....	2,265	7,500	277	1,183	2,542	8,683
Baker, Wm. H.—Soc.....	...	127	...	14	...	141
Harrison, Joe H.—Soc.....	...	107	...	7	...	114

**REPRESENTATIVE, THIRTY-THIRD GENERAL ASSEMBLY, COUNTIES OF ARCHULETA AND CONEJOS**

County	A. B. Bailey —R		Frank C. Belt —D	
	P. E.	G. E.	P. E.	G. E.
Archuleta .....	296	735	251	680
Conejos .....	1,139	2,216	437	2,153
	<u>1,435</u>	<u>2,951</u>	<u>688</u>	<u>2,833</u>

**REPRESENTATIVE, THIRTY-THIRD GENERAL ASSEMBLY, COUNTY OF BACA**

County	Fred E. Bear —R		Walter A. Rhodes —D		Ralph St Aubyn —D
	P. E.	G. E.	P. E.	G. E.	P. E.
Baca .....	618	1,672	538	1,188	340

**REPRESENTATIVE, THIRTY-THIRD GENERAL ASSEMBLY, COUNTIES OF BENT AND KIOWA**

County	Leonard H. Hudnall —D		H. H. King —R	
	P. E.	G. E.	P. E.	G. E.
Bent .....	791	2,242	489	1,522
Kiowa .....	141	607	305	975
	<u>932</u>	<u>2,849</u>	<u>794</u>	<u>2,497</u>

**REPRESENTATIVE, THIRTY-THIRD GENERAL ASSEMBLY, COUNTY OF BOULDER**

	P. E.	G. E.
Blum, Robert V.—D.....	3,427	9,364
Coleman, A. Dean—R.....	3,373	10,593
Higman, Howard—D.....	3,063	7,934
Newrock, Ben—R.....	2,892	7,351

**REPRESENTATIVE, THIRTY-THIRD GENERAL ASSEMBLY, COUNTIES OF CHAFFEE AND LAKE**

County	Frank Fehling —R		E. J. Levin —D		William D. O'Brien —D
	P. E.	G. E.	P. E.	G. E.	P. E.
Chaffee .....	393	2,452	...	1,539	864
Lake .....	302	1,799	...	1,769	1,690
	<u>695</u>	<u>4,251</u>	<u>...</u>	<u>3,308</u>	<u>3,348</u>

ABSTRACT OF VOTES CAST

REPRESENTATIVE, THIRTY-THIRD GENERAL ASSEMBLY,  
COUNTIES OF CHEYENNE AND LINCOLN

County	O. C. Allen —D		A. H. Brentlinger —R	
	P. E.	G. E.	P. E.	G. E.
	Cheyenne	314	522	427
Lincoln	630	1,564	838	1,380
	944	2,086	1,265	2,546

REPRESENTATIVE, THIRTY-THIRD GENERAL ASSEMBLY,  
COUNTIES OF CLEAR CREEK, EAGLE, GILPIN, PITKIN AND SUMMIT

County	Clifford I. Parsons —D		W. A. Roberts	Robert A. Theobald —D
	P. E.	G. E.	G. E.	P. E.
	Clear Creek	459	1,189	1,074
Eagle	445	1,472	999	272
Gilpin	128	631	231	43
Pitkin	306	613	293	224
Summit	152	575	415	181
	1,490	4,480	3,012	977

REPRESENTATIVE, THIRTY-THIRD GENERAL ASSEMBLY,  
COUNTIES OF CROWLEY AND OTERO

	P. E.		G. E.		Total	
	P. E.	G. E.	P. E.	G. E.	P. E.	G. E.
	Douglas, Henry A.—R.....	456	1,124	1,024	5,596	1,480
Luginbill, A. J.—D.....	...	739	70	4,685	70	5,424
Pleiman, T. H.—D.....	369	805	1,239	3,414	1,608	4,219
Ward, Arlie M.—R.....	595	1,303	918	4,597	1,513	5,900

REPRESENTATIVE, THIRTY-THIRD GENERAL ASSEMBLY,  
COUNTIES OF CUSTER AND FREMONT

County	Rockwell B. Canda —R		Albert E. Fearheiley —D		A. H. Sparks —R
	P. E.	G. E.	P. E.	G. E.	P. E.
	Custer	314	738	158	445
Fremont	1,392	5,061	1,535	3,870	1,210
	1,706	5,799	1,693	4,315	1,359

REPRESENTATIVE, THIRTY-THIRD GENERAL ASSEMBLY,  
COUNTY OF DELTA

County	Harry Sanburg —R		J. C. Stephens —D		A. C. Tinsley —D
	P. E.	G. E.	P. E.	G. E.	P. E.
	Delta	895	3,700	548	3,426

REPRESENTATIVE, THIRTY-THIRD GENERAL ASSEMBLY,  
CITY AND COUNTY OF DENVER

	P. E.	G. E.
Alden, Lambert—R.....	19,350	77,552
Atchison, Clyde A.—R.....	13,899	...
Avoy, Joseph T.—D.....	23,002	82,822
Bacon, C. Bus—D.....	22,698	...
Baker, George J.—D.....	29,794	86,597
Batholic, Arthur W.—R.....	9,980	...
Benedict, Mitchell—R.....	16,178	78,099
Black, William A.—R.....	20,470	81,582
Bloye, Roy C.—R.....	15,892	73,339
Bolger, Donald Paul—D.....	21,721	...
Butler, Lansford F.—R.....	20,050	72,830
Chrysler, Roy—R.....	21,131	80,011
Coloroso, Dominic A.—D.....	27,296	92,030
Crowley, Clem—D.....	32,136	88,121
Cutler, Frank H.—R.....	16,212	69,933
Daumann, Nelson W.—D.....	18,140	...
Davis, W. G.—D.....	27,109	83,816
Draper, Cecil—R.....	19,338	75,644
Frantz, Albert T.—D.....	17,231	...
Gertz, A. G.—R.....	14,086	...
*Godsman, Sidney P.—R.....	17,388	...
Grimes, Irving—D.....	31,681	94,162
Hansen, Fitch P.—D.....	19,114	...
Haskell, Charles A.—R.....	16,946	74,803
Henry, Lawrence M.—D.....	25,502	80,734
†Hersom, Maurine Thauer—R.....	10,841	63,046
Hickerson, William B.—D.....	27,622	82,945
Ionides, Stephen A.—R.....	16,977	68,285
Jennings, William J.—D.....	28,758	84,284
Johnson, Wesley—D.....	23,248	81,735
King, Harry A.—D.....	27,035	86,166
Kline, Herman—D.....	26,359	79,087
Kramer, Florence H.—D.....	28,988	83,884
Lewis, William A.—R.....	21,018	79,971
Mann, Earl W.—.....	17,496	69,001
Mayfield, William T.—R.....	15,712	66,595
McDonald, Michael D.—D.....	33,699	81,277
Morrissey, John J., Jr.—D.....	29,127	85,099
Musick, J. Roger—R.....	18,496	72,016
Sperling, Si—D.....	11,135	...
Staples, Harry Bradley—D.....	19,056	...
Brier, Paine—Soc.....	...	1,567
Holland, Winifred—Soc.....	...	1,811
Jones, Pearl—Soc.....	...	1,456
Watson, Roy.....	...	1,589

\*Withdrawn after Primary election.  
†Appointed to fill vacancy.

REPRESENTATIVE, THIRTY-THIRD GENERAL ASSEMBLY,  
COUNTIES OF DOLORES, MONTEZUMA AND SAN MIGUEL

County	C. C. McAfee —R		Elizabeth E. Pellet —D		Tom H. Akin —D
	P. E.	G. E.	P. E.	G. E.	P. E.
	Dolores	217	374	357	527
Montezuma	905	2,015	787	1,770	975
San Miguel	155	554	488	1,027	261
	1,277	2,943	1,632	3,324	1,401

ABSTRACT OF VOTES CAST

**REPRESENTATIVE, THIRTY-THIRD GENERAL ASSEMBLY,  
COUNTIES OF DOUGLAS, PARK AND TELLER**

County	Aden E. (Pat) Coleman —D		J. Fred Thomas —R		John J. Butler —D	James C. Lang —D	Ernest H. Sterling —D
	P. E.	G. E.	P. E.	G. E.	P. E.	P. E.	P. E.
Douglas .....	21	657	473	1,353	32	255	70
Park .....	49	835	262	1,016	31	95	42
Teller .....	796	1,832	488	1,535	679	345	302
	866	3,324	1,223	3,904	742	695	414

**REPRESENTATIVE, THIRTY-THIRD GENERAL ASSEMBLY,  
COUNTY OF EL PASO**

	P. E.	G. E.
Cheever, Vernon—R.....	4,011	18,510
Cowen, W. W.—R.....	3,826	17,311
Dutcher, Oliver H.—D.....	3,284	11,829
Fontecchio, Dante—D.....	2,892	9,945
Heinicke, Alfred—D.....	3,082	12,017
Phillips, J. O.—R.....	3,766	16,292

**REPRESENTATIVE, THIRTY-THIRD GENERAL ASSEMBLY  
COUNTIES OF GARFIELD AND RIO BLANCO**

County	E. E. Fordham —R		H. E. (Dick) Raley —D	
	P. E.	G. E.	P. E.	G. E.
Garfield .....	1,402	3,186	960	1,779
Rio Blanco.....	501	1,103	205	439
	1,903	4,289	1,165	2,218

**REPRESENTATIVE, THIRTY-THIRD GENERAL ASSEMBLY,  
COUNTIES OF GRAND, MOFFAT AND ROUTT**

County	R. I. Gwillim —R		Pat Magill, Jr. —D		Herman Fegert —D	Claude A. Smith —D
	P. E.	G. E.	P. E.	G. E.	P. E.	P. E.
Grand .....	424	1,051	150	838	65	84
Moffat .....	756	1,380	120	1,177	403	94
Route .....	831	2,056	900	2,908	284	511
	2,011	4,487	1,170	4,923	752	689

**REPRESENTATIVE, THIRTY-THIRD GENERAL ASSEMBLY,  
COUNTIES OF GUNNISON, HINSDALE AND SAGUACHE**

County	H. G. Lashbrook —R	
	P. E.	G. E.
Gunnison .....	227	2,496
Hinsdale .....	37	207
Saguache .....	185	1,724
	449	4,427

**REPRESENTATIVE, THIRTY-THIRD GENERAL ASSEMBLY,  
COUNTY OF KUERFANO**

	P. E.	G. E.
Penny, Neil—D.....	1,831	3,226
Vigil, Daniel—R.....	917	3,567

**REPRESENTATIVE, THIRTY-THIRD GENERAL ASSEMBLY  
COUNTIES OF JACKSON AND LARIMER**

County	Victor Hanson —R		E. I. (Ted) Herring —R		James Jensen —D		Paul M. Maxwell —D	
	P. E.	G. E.	P. E.	G. E.	P. E.	G. E.	P. E.	G. E.
Jackson ..	69	727	61	629	49	193	40	167
Larimer ..	3,995	10,241	4,412	11,212	1,991	5,679	1,975	5,469
	4,064	10,968	4,473	11,841	2,040	5,872	2,015	5,636

**REPRESENTATIVE, THIRTY-THIRD GENERAL ASSEMBLY,  
COUNTY OF JEFFERSON**

	P. E.	G. E.
McGrath, Wm.—D.....	1,902	7,009
Pearson, Homer L.—R.....	3,167	9,338

**REPRESENTATIVE, THIRTY-THIRD GENERAL ASSEMBLY,  
COUNTY OF KIT CARSON**

	P. E.	G. E.
Buchanan, C. J.—R.....	979	2,025
Page, Fred—D.....	458	1,493
Boggs, John S.—R.....	837	.....

**REPRESENTATIVE, THIRTY-THIRD GENERAL ASSEMBLY,  
COUNTIES OF LA PLATA AND SAN JUAN**

County	Tom Kimball —R		L. W. Parcell —D
	P. E.	G. E.	G. E.
La Plata.....	531	4,033	2,386
San Juan.....	57	285	552
	588	4,318	2,938

**REPRESENTATIVE, THIRTY-THIRD GENERAL ASSEMBLY,  
COUNTY OF LAS ANIMAS**

	P. E.	G. E.
Horsman, John—D.....	4,105	8,249
Llewellyn, Robert—R.....	970	5,188
Morgan, Wright—R.....	806	4,493
Valdez, J. C.—D.....	3,242	6,425
Cordova, Paul J.—R.....	496	.....
Mathias, Glenn O.—D.....	2,976	.....
Stancato, Lee G.—R.....	470	.....
Vigil, Frank—R.....	417	.....

**REPRESENTATIVE, THIRTY-THIRD GENERAL ASSEMBLY  
COUNTY OF LOGAN**

	P. E.	G. E.
Hamil, David A.—R.....	1,541	5,378
Heist, J. H.—D.....	1,216	2,186



**REPRESENTATIVE, THIRTY-THIRD GENERAL ASSEMBLY,  
COUNTY OF MESA**

	P. E.	G. E.
Evans, Jack—R.....	1,093	7,463
Hornbaker, J. E.—D.....	967	6,761
McMullin, Samuel G.—R.....	855	4,628
Meek, W. S.—D.....	1,122	8,081

**REPRESENTATIVE, THIRTY-THIRD GENERAL ASSEMBLY,  
COUNTIES OF MINERAL AND RIO GRANDE**

County	P. E. Harney —D		Roy McConnell —R	
	P. E.	G. E.	P. E.	G. E.
Mineral .....	56	283	52	171
Rio Grande.....	425	2,296	420	2,678
	481	2,579	472	2,849

**REPRESENTATIVE, THIRTY-THIRD GENERAL ASSEMBLY,  
COUNTIES OF MONTROSE AND OURAY**

County	J. C. Kerr —R		J. Carl Wilson —D	
	P. E.	G. E.	P. E.	G. E.
Montrose .....	652	3,424	645	3,141
Ouray .....	67	541	98	637
	719	3,965	743	3,778

**REPRESENTATIVE, THIRTY-THIRD GENERAL ASSEMBLY  
COUNTY OF MORGAN**

	P. E.	G. E.
Bartholomew, Lew E.—R.....	2,012	3,403
Glenn, George—D.....	1,174	3,703
Mitchell, W. T.—D.....	695	.....

**REPRESENTATIVE, THIRTY-THIRD GENERAL ASSEMBLY,  
COUNTIES OF PHILLIPS AND SEDGWICK**

County	William J. Jenkins —D		Roy E. Owens —R		Rubert Johnson —D
	P. E.	G. E.	P. E.	G. E.	P. E.
Phillips .....	176	924	877	1,500	301
Sedgwick .....	260	1,045	613	1,317	64
	436	1,969	1,490	2,817	365

**REPRESENTATIVE, THIRTY-THIRD GENERAL ASSEMBLY,  
COUNTY OF PROWERS**

	P. E.	G. E.
Russell, Edward O.—D.....	1,015	2,715
Strain, Marlon E.....	1,228	2,686

**REPRESENTATIVE, THIRTY-THIRD GENERAL ASSEMBLY,  
COUNTY OF PUEBLO**

	P. E.	G. E.
Booth, James W.—R.....	3,060	15,597
Cawfield, Sterling—D.....	6,165	18,547
Comings, W. B.—D.....	5,550	16,964
Dameron, Thos. H.—D.....	6,005	18,012
Ray, Paul M.—R.....	3,023	14,073
Strait, Harry—R.....	3,050	14,538
Sumey, R. W.—D.....	4,484	14,978
Young, Chester R.—R.....	3,074	14,215
Wilkes, Don Q.—D.....	4,142	.....

**REPRESENTATIVE, THIRTY-THIRD GENERAL ASSEMBLY,  
COUNTY OF WASHINGTON**

	P. E.	G. E.
Donahue, J. H.—D.....	880	1,639
Shirley, J. R.—R.....	774	2,117
Gill, Frank L.—R.....	700	.....

**REPRESENTATIVE, THIRTY-THIRD GENERAL ASSEMBLY,  
COUNTY OF WELD**

	P. E.	G. E.
Beltz, Jasper N., Sr.—D.....	2,714	9,268
Bickling, Mac—D.....	3,060	10,459
Carlson, Wm. Albion—R.....	7,351	16,191
Norcross, Fred—R.....	7,034	16,289
Ogilvie, James S.—R.....	7,423	15,832
Townsend, Charles C.—R.....	6,230	14,717
Walling, Edna U.—D.....	3,065	9,139
Wilkinson, Lacy L.—D.....	275	10,099
Payne, Shirley M.—R.....	4,915	.....

**REPRESENTATIVE, THIRTY-THIRD GENERAL ASSEMBLY,  
COUNTY OF YUMA**

	P. E.	G. E.
Tabor, Harold A.—R.....	895	3,214
Williams, Ellis L.—D.....	784	2,293

**DISTRICT ATTORNEY FIRST JUDICIAL DISTRICT**

County	Harry Behm —D		Richard H. Simon —R		Christian Dewey Stoner —R
	P. E.	G. E.	P. E.	G. E.	P. E.
Adams .....	1,886	5,424	956	3,852	714
Arapahoe .....	2,284	7,247	2,183	8,117	633
Clear Creek.....	615	1,031	176	1,215	133
Gilpin .....	193	413	76	423	71
Jefferson .....	1,930	7,748	1,098	8,724	2,236
	6,908	21,863	4,489	22,331	3,787

**DISTRICT JUDGE SECOND JUDICIAL DISTRICT  
(To Fill Vacancy)  
CITY AND COUNTY OF DENVER**

	P. E.	G. E.
Miles, Floyd F.—D.....	40,415	83,423
Sackmann, Charles C.—R.....	22,944	69,283

**DISTRICT ATTORNEY SECOND JUDICIAL DISTRICT  
CITY AND COUNTY OF DENVER**

	P. E.	G. E.
Bowman, Don D.—D.....	6,631	.....
Burke, James T.—R.....	15,295	87,560
Cummings, Ralph J.—D.....	19,195	.....
Moore, O. Otto—D.....	19,215	67,512
Robinson, Finlay M.—R.....	8,630	.....

**DISTRICT ATTORNEY THIRD JUDICIAL DISTRICT**

County	Joseph W. Hawley —R		John N. Mabry —D	
	P. E.	G. E.	P. E.	G. E.
Baca .....	519	1,404	674	1,316
Bent .....	460	1,594	765	2,028
Huerfano.....	821	2,493	1,977	4,500
Las Animas.....	1,457	5,629	5,064	7,574
Prowers .....	1,145	2,480	1,030	2,837
	<u>4,402</u>	<u>13,600</u>	<u>9,510</u>	<u>18,255</u>

**DISTRICT ATTORNEY FOURTH JUDICIAL DISTRICT**

County	Irl Foard —R		Thomas I. Purcell —D		Clyde H. Babcock —R
	P. E.	G. E.	P. E.	G. E.	P. E.
Cheyenne .....	247	844	290	743	189
Douglas .....	165	1,136	295	905	319
Elbert .....	233	1,643	373	933	167
El Paso.....	2,800	15,809	3,930	14,107	2,125
Kit Carson.....	548	2,284	418	1,059	946
Lincoln .....	287	1,584	592	1,259	564
Teller .....	265	1,318	1,752	1,955	221
	<u>4,545</u>	<u>24,618</u>	<u>7,650</u>	<u>20,961</u>	<u>4,531</u>

**DISTRICT ATTORNEY FIFTH JUDICIAL DISTRICT**

County	Harold A. Grant —R		William J. Meehan —D	
	P. E.	G. E.	P. E.	G. E.
Eagle .....		986	713	1,583
Lake .....		2,347	1,824	1,264
Summit .....		481	269	525
		<u>3,814</u>	<u>2,806</u>	<u>3,372</u>

**DISTRICT ATTORNEY SIXTH JUDICIAL DISTRICT**

County	James M. Noland		No Republican Candidate
	P. E.	G. E.	
Archuleta .....	297	924	
Dolores .....	392	606	
La Plata.....	886	4,834	
Montezuma .....	1,315	2,812	
San Juan.....	351	657	
	<u>3,241</u>	<u>9,833</u>	

**DISTRICT ATTORNEY SEVENTH JUDICIAL DISTRICT**

County	A. Allen Brown —R		William Weiser —D	
	P. E.	G. E.	P. E.	G. E.
Delta .....	922	4,620	859	2,429
Gunnison .....	218	1,558	636	1,619
Hinsdale .....	35	150	54	103
Mesa .....	1,057	6,228	1,384	8,163
Montrose .....	618	3,467	596	2,859
Ouray .....	66	563	102	612
San Miguel.....	161	592	580	904
	<u>3,077</u>	<u>17,178</u>	<u>4,211</u>	<u>16,689</u>

**DISTRICT ATTORNEY EIGHTH JUDICIAL DISTRICT**

County	Hatfield Chilson —R		Barnard Houtchens —D		Roy M. Briggs —R	M. E. H. "Marc" Smith —R
	P. E.	G. E.	P. E.	G. E.	P. E.	P. E.
Boulder .....	2,189	10,165	3,484	8,744	800	769
Jackson .....	59	531	54	322	3	5
Larimer .....	3,733	10,849	2,222	5,730	744	729
Weld .....	1,616	12,781	3,930	13,571	4,065	3,390
	<u>7,597</u>	<u>34,326</u>	<u>9,690</u>	<u>28,367</u>	<u>5,612</u>	<u>4,893</u>

**DISTRICT ATTORNEY NINTH JUDICIAL DISTRICT**

County	Carl W. Fulghum —R		Allyn Cole —R	No Democratic Candidate
	P. E.	G. E.	P. E.	
Garfield .....	1,066	4,392	609	
Pitkin .....	94	709	30	
Rio Blanco.....	265	1,228	313	
	<u>1,425</u>	<u>6,329</u>	<u>952</u>	

**DISTRICT JUDGE TENTH JUDICIAL DISTRICT  
(To Fill Vacancy)**

County	J. Arthur Phelps —R		French L. Taylor —D	
	P. E.	G. E.	P. E.	G. E.
Crowley .....	594	1,333	416	871
Kiowa .....	299	947	143	612
Otero .....	1,121	5,525	1,585	4,332
Pueblo .....	3,280	15,993	6,876	16,330
	<u>5,294</u>	<u>23,798</u>	<u>9,020</u>	<u>22,145</u>

**DISTRICT ATTORNEY TENTH JUDICIAL DISTRICT**

County	John H. Marsalis —D		Ralph L. Neary —R	
	P. E.	G. E.	P. E.	G. E.
Crowley .....	384	806	592	1,331
Kiowa .....	125	605	298	949
Otero .....	1,484	4,122	1,104	5,505
Pueblo .....	6,794	16,372	3,308	16,136
	<u>8,787</u>	<u>21,905</u>	<u>5,302</u>	<u>23,921</u>

**DISTRICT ATTORNEY ELEVENTH JUDICIAL DISTRICT**

County	Emerson M. Eagleton —R		William S. Rush —D	
	P. E.	G. E.	P. E.	G. E.
Chaffee .....	350	1,656	894	2,361
Custer .....	348	740	162	440
Fremont .....	2,372	5,169	1,702	4,141
Park .....	246	1,105	176	734
	<u>3,316</u>	<u>8,670</u>	<u>2,934</u>	<u>7,676</u>

**DISTRICT ATTORNEY TWELFTH JUDICIAL DISTRICT**

County	George H. Blickhahn —R		Leonard M. Haynie —D	
	P. E.	G. E.	P. E.	G. E.
Alamosa .....	309	2,097	641	2,454
Conejos .....	1,019	2,049	421	2,160
Costilla .....	96	1,211	931	1,484
Mineral .....	54	204	41	292
Rio Grande.....	395	2,656	424	2,383
Saguache .....	175	1,368	238	1,041
	<u>2,048</u>	<u>9,585</u>	<u>2,696</u>	<u>9,814</u>

**DISTRICT ATTORNEY THIRTEENTH JUDICIAL DISTRICT**

County	Thomas E. Munson —D		William B. Paynter —R	
	P. E.	G. E.	P. E.	G. E.
Logan .....	1,346	3,865	1,452	3,787
Morgan .....	1,420	2,606	2,086	4,446
Phillips .....	434	1,198	804	1,184
Sedgwick .....	277	1,061	601	1,317
Washington .....	904	1,523	1,265	2,313
Yuma .....	760	2,152	882	3,129
	<u>5,141</u>	<u>12,405</u>	<u>7,090</u>	<u>16,176</u>

**DISTRICT ATTORNEY FOURTEENTH JUDICIAL DISTRICT**

County	Ray Monson —D		S. E. Pleasant —R	
	P. E.	G. E.	P. E.	G. E.
Grand .....	266	869	403	1,037
Moffat .....	524	927	769	1,705
Routt .....	1,495	3,023	791	1,946
	<u>2,285</u>	<u>4,819</u>	<u>1,963</u>	<u>4,688</u>

**DIRECTORS OF CADDOA RESERVOIR AND ARKANSAS VALLEY BASIN CONSERVANCY AND IMPROVEMENT DISTRICT  
PROWERS COUNTY**

Gordon, Arthur C.—R.....	667
Smartt, Hacket—D.....	442

**MOFFAT TUNNEL COMMISSIONERS  
DIVISION ONE**

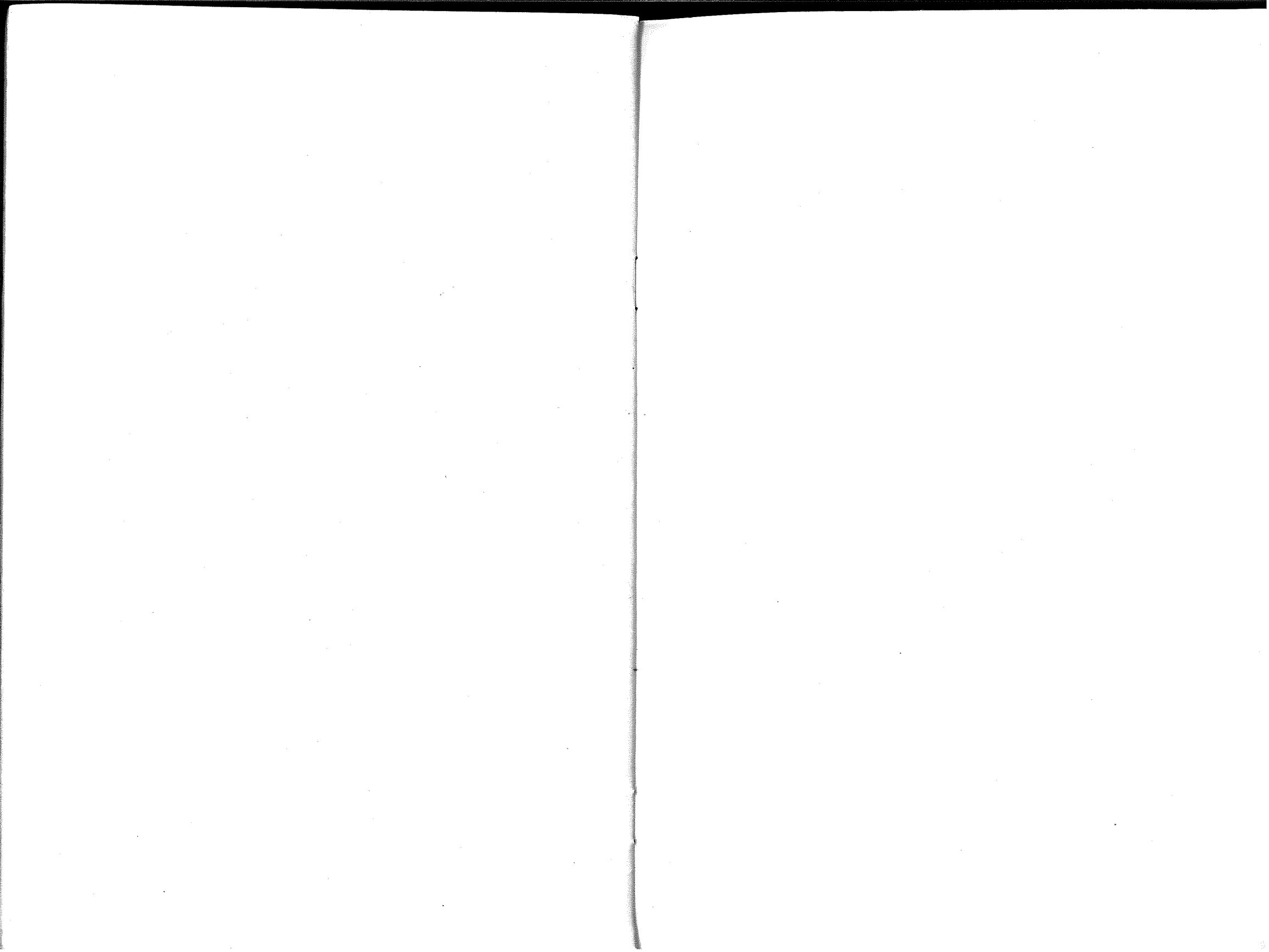
County	Eugene W. Ambrose Real Estate Owners	Rodney J. Bardwell Real Estate Taxpayers	William J. Bennett Property Owners	Elmo Hall Non-Partisan League
	G. E.	G. E.	G. E.	G. E.
Adams .....	56	65	90	22
Boulder .....	19	15	16	8
Denver .....	19,709	25,057	26,727	4,714
Gilpin .....	6	7	8	0
Jefferson .....	473	650	856	106
	<u>20,263</u>	<u>25,794</u>	<u>27,697</u>	<u>4,850</u>

**DIVISION ONE**

County	Samuel M. January Property Taxpayers	Frank Oakes Pioneer M. T.	Thomas G. Vick Roy Real Estate Owners
	G. E.	G. E.	G. E.
Adams .....	52	34	34
Boulder .....	20	11	12
Denver .....	20,299	9,567	14,108
Gilpin .....	5	1	1
Jefferson .....	528	190	241
	<u>20,904</u>	<u>9,803</u>	<u>14,396</u>

**DIVISION TWO**

County	Walter L. Carver Citizens	Thomas S. Iles Tunnel Taxpayers	Charles H. Leckenby Western Slope
	G. E.	G. E.	G. E.
Eagle .....	17	16	17
Grand .....	195	401	407
Moffat .....	677	600	480
Routt .....	715	997	1,089
	<u>1,604</u>	<u>2,014</u>	<u>1,993</u>



COUNTY OFFICERS—STATE

COUNTY	COUNTY SEAT	COUNTY CLERK	COUNTY TREASURER	ASSESSOR	SHERIFF	COUNTY JUDGE	CLERK COUNTY COURT	CLERK COUNTY COURT
1 Adams	Brighton	Arle J. Tripp—D	H. L. Prather—D	E. G. Waymire—D	Herman A. Farney—R	Homer G. Preston—D	Margaret McGuire—D	Howa
2 Alamosa	Alamosa	C. M. Van Fleet—D	Miss E. P. Joyce—D	Olof Bergman—D	Maurice Smith—D	D. W. Kirkpatrick—R	Mrs. Chloe Stubbs—R	Mrs. Joh
3 Arapahoe	Littleton	Earl K. Downing—R	Charles B. Sinclair—R	W. W. Hanson—D	E. E. Monzingo—R	Henry Bruce Teller—D	J. T. Robertson—D	John Fred
4 Archuleta	Pagosa Springs	Frank Conner—R	James Kenney—D	Kenneth D. Hill—D	Earl Crouse—R	J. T. Martinez—R	J. T. Martinez—R	Fred
5 Baca	Springfield	Walter P. Powell—R	Hannah Baker—D	Jack L. Patterson—D	Jared J. Hansen—D	W. R. Randall—D	Mrs. W. R. Randall—D	Henr
6 Bent	Las Animas	Mrs. Myrtle V. Johnson—D	R. W. Esgar—R	C. N. Troup—R	L. C. Coffelt—D	Herman A. Bailey—D	Herman A. Bailey—D	Wm
7 Boulder	Boulder	Ed Adams—D	H. A. Lennartz—D	Aylwin A. Smith—R	George A. Richart—R	William E. Buck—R	Lynn R. McIntosh—R	C. W.
8 Chaffee	Salida	A. W. Samson—R	Chas. C. White—D	Wm. A. Aby—R	H. J. Swain—R	R. S. Buchanan—D	Arthur E. Smith—R	Arth
9 Cheyenne	Cheyenne Wells	Thos. H. McKown—D	Lee Ross—R	Edward J. Hogan—D	Fred B. Fletcher—R	W. A. Martinson—R	Miss Mattie Trimble—R	H. C
10 Clear Creek	Georgetown	Kenneth E. Moscript—R	Robert W. Harvey—R	Edmund Rowse—R	William J. Harvey—R	George D. Criley—D	George D. Criley—D	John J.
11 Conejos	Conejos	J. A. Rivera—R	J. G. Lopez—R	Adolph Gallegos—D	Lafayette Cantu—D	J. Fidel Chavez—D	Mary Galvez—D	F. L.
12 Costilla	San Luis	Abel Trujillo—D	Joe M. Espinoza—D	Frank Espinoza—D	Fred Espinoza—R	J. O. Valdez—D	Miss Linda M. Galavan—D	Frank
13 Crowley	Ordway	H. M. Greene—R	Philo G. Strever—R	Edward P. Johnson—R	Henry Adam—D	E. M. Stroud—D	Edward L. Mott—R	Denn
14 Custer	Westcliffe	Lewis L. Abbott—D	Clarence J. Dolan—D	Mel Kastendieck—R	James H. Isabell—R	August N. Menzel—R	Arthur A. Clements—R	Edwa
15 Delta	Delta	O. A. Ehrigott—R	Clement A. Bowie—R	J. B. Drake—D	Ray R. Lockhart—R	Arthur A. Clements—R	John L. Griffith	Gus
16 Denver	Denver	George F. Rock—R	F. E. Wilson—D	F. E. Wilson—D	Wm. E. Guthner—R	C. E. Kettering	John L. Griffith	F. W.
17 Dolores	Rico	Miss Kathleene Blackham—R	H. G. Keown—D	E. E. Ballenger—D	Fred Young—R	George E. Hicks—D	George E. Hicks—D	O. P.
18 Douglas	Castle Rock	Chas. Prescott—D	Robert T. Jones—D	Carroll Hier—D	S. H. Buckner—R	Edgar S. Triplett—R	Edgar S. Triplett—R	Char
19 Eagle	Eagle	Mrs. Mae Cox—R	Forrest W. Cave—D	George W. Watson—D	W. M. Wilson—R	Mrs. Mabel A. Ethel—D	Mrs. Mabel A. Ethel—D	Chap
20 Elbert	Kiowa	Mrs. Delpha S. Moreland—D	C. W. Elsner—R	Orley Crouch—R	G. R. Brown—R	F. D. Hart—R	F. D. Hart—R	Harr
21 El Paso	Colorado Springs	Charles Ozias—D	O. W. Ward—D	A. W. Sparkman—R	Samuel J. Deal—D	Irvin E. Jones—D	Harry A. Thompson—D	Miss
22 Fremont	Canon City	Katherine Komfala—D	Thos. M. Warner—D	J. W. Haymaker—R	Foster Ranson—R	Joseph D. Blunt—R	Florence Gerlach—R	Jonat
23 Garfield	Glenwood Springs	Walter J. Frost—D	C. H. Durant—R	Bert Brenton—R	Roy Terrell—R	William A. Mason—R	William A. Mason—R	N. D.
24 Gilpin	Central City	A. C. Thomas—D	Hugh L. Lawry—R	William O. Ziege—D	Oscar Williams—R	James M. Seright—D	James M. Seright—D	J. W.
25 Grand	Hot Sulphur Springs	R. O. Throckmorton—R	Charles W. Bloom—D	Victor C. Huffaker—D	Mark E. Fletcher—D	J. N. Pettingell—R	J. N. Pettingell—R	Brice
26 Gunnison	Gunnison	Sam C. Hartman—R	M. J. Fisher—D	Kenneth G. Mark—R	H. G. Lashbrook—R	Clyde Welch—D	John R. Liska—D	Mrs.
27 Hinsdale	Lake City	Mrs. Mabel B. Rawson—R	Mrs. Pearl McCloughan—R	W. E. Vernon—D	Hugh Coburn—D	John R. Liska—D	Betty Saunders—D	H. G.
28 Huerfano	Walsenburg	Damacio Vigil—D	Edward Slates—D	J. Frank Cordova—D	Claud Swift—D	Joseph A. Barron—D	Aloysius Sanchez—D	Char
29 Jackson	Walden	Mrs. L. F. Mitchell—D	Miss Florence A. Wilkins—D	John E. Stephens—D	John D. Bulis—R	J. A. McNamara—D	J. A. McNamara—D	A. G.
30 Jefferson	Golden	W. T. Marsh—R	Sam'l Bolitho—R	Arthur J. Apel—R	Willis Morris—R	Osmer E. Smith—R	A. T. Maserang—R	Char
31 Kiowa	Eads	Art Bradbury—R	Wm. E. Rose—R	Edwin Immer—R	C. A. Wood—D	George B. Black—R	George B. Black—R	Reub
32 Kit Carson	Burlington	Mrs. Pearl Klockenteger—R	L. M. Bushart—R	Robert L. Wilkinson—R	R. W. Plummer—R	E. M. Short—R	E. M. Short—R	Mrs.
33 Lake	Leadville	John Gregory—D	Frank E. Kendrick—D	John J. Bohem—D	Angelo Travison—D	Charles H. Schlaepfer—R	Charles H. Schlaepfer—R	Marg
34 La Plata	Durango	Mrs. Edith C. Kiel—R	Thomas Mason—R	Herbert McGregor—D	R. Bruce Sullivan—R	W. Bruce Jacobson—R	Julia J. Hamilton—R	W. F.
35 Larimer	Fort Collins	Stanley A. Curtis—R	C. S. Ickes—R	W. Ed Wright—R	Ted Schaffer—R	Harry H. Hartman—R	G. R. Cushing—R	Kenr
36 Las Animas	Trinidad	Edward G. Hower—D	Forrest E. Dunlavy—D	Isaac Sandoval—D	Ray Marty—D	William T. Eckhart—D	Nick Bisulco—D	Mauy
37 Lincoln	Hugo	John Abell—D	Orville C. Meink—R	Guy W. Hicks—R	Merlin H. Koerner—R	C. M. Somerville—D	Mrs. Jewell Nell Mohan—D	R. J.
38 Logan	Sterling	Harley Beery—D	W. F. Alexander—D	J. Howard Berkstresser—R	Ray R. Powell—D	Roy T. Johnson—R	Marguerite Griffith—R	Josep
39 Mesa	Grand Junction	C. B. Pond—R	Burrell C. Reynolds—D	R. T. Ellington—D	Charles S. Lumley—R	Adair J. Hotchkiss—D	Miss Gladys Moss—D	Mrs.
40 Mineral	Creede	E. T. Barnhart—D	Wm. T. Jackson—R	John J. Weaver—D	E. J. Dabney—D	Willard I. Caton—R	Willard I. Caton—R	Wm.
41 Moffat	Craig	E. D. Davis—D	Russell H. Coles—R	W. O. Miner—D	George Krieger—R	J. W. Self—R	J. W. Self—R	Ralp
42 Montezuma	Cortez	Henry Thorpe—D	Claude H. Wilson—D	J. C. Rumburg—R	Ray Smith—D	C. R. Hickman—D	Mrs. Katie Brumley	C. R.
43 Montrose	Montrose	Ira C. Foster—R	Frank E. Spencer—R	W. G. Haney—D	Frank L. Hovey—D	Earl J. Herman—D	Mrs. Mildred Johnson—D	Clide
44 Morgan	Fort Morgan	Loyal C. Baker—R	Edw. H. Madison—R	Lewis E. Wilson—R	Rufus A. Johnston—D	A. W. Dulweber—D	Mary Terriere—D	Hugh
45 Otero	La Junta	Frank Hamer—D	Edw. T. Oberling—R	Art W. Black—R	John H. Armstrong—D	Earl W. Haskins—R	Miss Leah M. Ryder—R	Ruth
46 Ouray	Ouray	Mrs. Eva K. Moule—R	Harry E. Stark—D	Patricio Stealey—D	Jess M. Wood—D	Edward Jelsma—D	Edward Jelsma—D	Marg
47 Park	Fairplay	H. C. Moyer—R	Glen A. Young—D	James T. Witcher—D	S. H. Law—R	Clarence S. Bullock—R	Clarence S. Bullock—R	Mrs.
48 Phillips	Holyoke	Mrs. Emma S. Kramer—D	Ray E. Crosby—R	B. A. Stephenson—R	H. M. Clements—R	Leon Kepler—R	Leon Kepler—R	Geor
49 Pitkin	Aspen	M. M. Neihardt—R	Robert S. Killey—D	Chas. D. Hart—R	Frank Bruin—D	Wm. R. Shaw—R	Miss Louise M. Berg	Fran
50 Prowers	Lamar	W. S. Morris—R	Delmas M. Martin—D	W. C. Wilson—D	W. C. McGuin—R	E. R. Jones—R	E. R. Jones—R	Miss
51 Pueblo	Pueblo	A. G. Koehenberger—D	J. E. Creel—D	Sam P. McCoun—D	Lewis Worker—R	Hubert Glover—D	Ray L. Hayes—D	J. R.
52 Rio Blanco	Meeker	J. W. C. Shepherd—D	Geo. E. Aicher—D	F. W. Hossack—R	Chester I. Mead—R	John E. Wix—R	John E. Wix—R	Robe
53 Rio Grande	Del Norte	Ira H. Mitchener—D	Mrs. Norma Z. Statton—R	E. E. Goodding—D	Clyde D. Phillips—D	Manlius T. Hancock—D	Lee A. Ruark—D	Anto
54 Routt	Steamboat Springs	John D. Crawford—D	Thomas W. Poulson—D	Eugene Steele—D	Fred Foster—R	John W. Cole—D	John W. Cole—D	M. M.
55 Saguache	Saguache	W. E. Whitten—R	W. L. Hammond—D	Clifford Burnham—R	Ed Paul—R	Birt Clare—D	Birt Clare—D	Fay
56 San Juan	Silverton	Mrs. Helen A. Thompson—R	Mrs. Ida L. Grimes—R	Norman F. Bowden—D	Fred Patterson—D	Wm. Palmquist—D	Wm. Palmquist—D	Joe
57 San Miguel	Telluride	Mrs. Wilma L. Piele—D	Harold C. Ballard—D	Everett Vernon—D	L. G. Warrick—R	H. E. Dill—D	H. E. Dill—D	Miss
58 Sedgwick	Julesburg	Foster Parker—D	Frank L. Alexander—R	L. J. Bennett—R	Glenn Goddard—R	B. D. Parker, Jr.—R	Mrs. Mabel Cavender—R	Mrs.
59 Summit	Breckenridge	Hugh E. Smith—R	Frank F. Brown—R	Edward T. Stuard—D	C. P. Enyeart—R	M. J. Waltz—R	M. J. Waltz—R	Melie
60 Teller	Cripple Creek	Mrs. Mamie Wells—D	M. W. Kessey—D	Miss Blanche A. Cassady—D	Cecil A. Markley—D	John H. White—R	John H. White—R	Mrs.
61 Washington	Akron	H. G. Potter—R	Delman A. Yackle—R	H. H. Holt—R	S. B. Lewis—R	James G. Holsclaw—R	Mrs. Blanche D. Avery—R	Mrs.
62 Weld	Greeley	Louis Spomer—R	Harvey E. Witwer—R	C. M. Whiteside—R	Gus G. Anderson—R	Benj. A. Woodcock—D	Ross Shaklee—D	Albe
63 Yuma	Wray	Ray F. Morgan—D	Robert L. Sheverbush—D	B. H. Yount—D	Raymond Van Horn—D	Buffer Roberts—R	Buffer Roberts—R	Esth

COUNTY OFFICERS—STATE OF COLORADO

JUDGE	CLERK COUNTY COURT	CLERK DISTRICT COURT	SURVEYOR	SUPT. OF SCHOOLS	CORONER	COUNTY COMMISSIONERS			
on—D	Margaret McGuire—D	Howard H. Griffin—D	G. T. Mullings—D	Grace S. Miller—D	A. T. Allen—R	Geo. S. Kemp—R	Frank Larson—R	Harry C. Flanders—R	1
ick—R	Mrs. Chloe Stubbs—R	Mrs. Alice E. Burnham—R	Mrs. Mary H. Peterson—R	Mabel McL. O'Laughlin—D	John Allardice—D	Shrive B. Collins—D	John A. Meehan—D	R. C. Mullings—D	2
iller—D	J. T. Robertson—D	John M. Haynes—D	John W. Black—R	Mrs. Lena Archuleta—R	Jay M. Hatfield—R	Hugh W. Graham, Jr.—R	C. D. Courtright—D	Wm. C. Giggall—R	3
—R	J. T. Martinez—R	Fred Catchpole—D	T. B. Nossaman—D	Joe B. Perkins—D	Dr. J. G. McKinley—R	Dailey Hoti—D	John R. Stevens—D	Harmon T. Clark—D	4
—D	Mrs. W. R. Randall—D	Henry O. Green—D	D. E. Heizer—R	Hazel L. Martin—R	Dr. G. A. Duffy—R	C. L. Bosley—D	W. A. Hamilton—R	J. C. Lent—R	5
ley—D	Herman A. Bailey—D	Wm. A. Bush—D	J. E. Byron—R	Chas. E. Davis—R	Geo. W. Powell—R	O. L. Robinson—R	C. E. Everhart—R	M. L. Earl—R	6
k—R	Lynn R. McIntosh—R	C. W. Atkinson—R	E. Carter Hutchinson	Bessie M. Shewalter—D	Geo. W. Howe—R	Elmer Hetzer—D	Joe Carlson—R	Elmer Autrey—R	7
n—D	Arthur E. Smith—R	Arthur E. Smith—R	D. H. Zack—R	Mrs. Jeanette Baughman—R	J. E. Stewart—D	Ben Behrman—D	John Mundlein—D	T. E. O'Haver—R	8
on—R	Miss Mattie Trimble—R	H. C. Nelson—R	Chas. L. Harrington—D	Vida Seaton Cannady—R	Emil K. Keyser—R	Elmer Pearson—R	Fred Hadley—R	C. F. Kibbee—R	9
y—D	George D. Criley—D	John W. Old—D	A. H. Martin—D	Gaspar Garcia—R	Dr. Freeman D. Fowler—R	Wm. F. Buckley—D	George H. Curnow—R	Tony Anderson—D	10
—D	Mary Galvez—D	J. L. Mott—R	J. L. Tucker—R	Belinda S. Carpenter—R	Earl Haynie—D	Severiano Ortiz—R	W. Fred Haynie—D	Juan I. Medina—R	11
—D	Miss Linda M. Galavan—D	Frank Mondragon—R	A. B. Hunsicker—R	N. E. Nordby—R	Dr. R. C. Diaz—R	Joe Aragon—D	Felix Garcia—R	W. S. Parrish, Sr.—D	12
zents—R	Edward L. Mott—R	Dennis J. Mooney—D	A. K. Vickery—R	Mrs. Georgianna Kettle—R	J. E. Jeffery—R	B. H. Schwab—R	B. Q. Norris—R	E. G. Clatworthy—R	13
—D	Arthur A. Clements—R	Edward L. Mott—R	Percy R. Krantz—R	Miss Martha Savage—D	Charles A. Menzel—R	H. E. Schwab—R	Clyde Sheffield—R	Ray O. Adams—R	14
—D	John L. Griffith—R	Gus Schlapp—D	Henry H. Curtis—R	Angela G. Herstrom—R	A. R. McCormick—R	H. S. Wood—R	Ed H. Crawford—D	W. F. Blaine—R	15
ett—D	George E. Hicks—D	F. W. Sanborn	William H. Lea—D	Miss M. Anna Engel—R	Cahl Ph. Schwab	Harold N. Webster	George E. Cramner	R. E. Wilson	16
Ethel—D	Edgar S. Triplett—R	O. P. Weston—D	Forrest L. Head—R	Grace L. Lamb—R	C. M. Engel—R	Edward Bear—D	Roy West—R	Wade A. Redford—D	17
—D	Mrs. Mabel A. Ethel—D	Charles S. Merrill—R	R. M. Cannon—R	Miss Kathleen O'Rourke—D	C. Douglas Andrews—D	C. H. Lowell—R	Frank Dakan—R	H. H. Bean—R	18
—D	P. D. Hart—R	Harry Anderson—R	J. Q. McNatt—R	H. H. Hadley—D	Paul Andre—R	H. A. Nottingham—D	Wayne T. Jones—R	Alfred M. Sloss—D	19
son—R	Harry A. Thompson—D	Miss Lois A. Brenner—D	George M. Heinsen—D	Joseph W. Stoner—R	Dale O. Groves—R	Dewey Carnahan—D	E. F. Ager—R	R. W. Lambert—R	20
ght—D	Florence Gerlach—R	Jonathan Seaman—R	W. E. Scott, Jr.—D	Alma M. Harris—D	Lawrence O. Haney—D	Emmett R. Knight—D	Chas. N. Ellis—R	J. Z. McCullough—D	21
l—R	William A. Mason—R	N. D. Smith—R	Frank I. Huntington—R	Mrs. Elizabeth Parfet—R	Dr. W. T. Little—R	William R. Griffiths—R	Frank Zavislan—D	Finis Parks—R	22
—D	James M. Seright—R	J. W. Leidinger—D	F. R. LaPlante—R	Mrs. Adele McDowell—D	J. I. Burdge—R	Kenneth A. Baillie—R	Harry A. Smith—R	Sig. Olsen—R	23
—D	J. N. Pettingell—R	Brice Sheriff—D	B. N. Ramsey—D	Mrs. Emma Hards—R	D. H. Montgomery—R	A. M. Fairchild—D	George McLaughlin—D	W. T. Sterling—R	24
—D	Betty Saunders—D	Mrs. Bessie Wolfe—R	James H. P. Fisk—R	H. G. Heath—D	Alex Campbell—D	Amos W. Horn—R	James E. Quinn—D	W. H. Whalen—D	25
on—D	John R. Liska—D	H. G. Heath—D	Frank DeLynden—D	Frances Nelson—D	A. P. Griffiths—D	B. H. Jorgensen—D	H. L. Corder—D	Jas. Davies, Jr.—D	26
a—D	Aloysius Sanchez—D	Charles Haines—D	David H. M. Strong—R	Miss Hazel Turner—D	Dan Unfug—R	Ivan O. Vickers—D	E. M. Bowers—D	Ben Pascoe—D	27
h—R	J. A. McNamara—D	A. G. Maine—R	O. A. Olson—R	Marguerite Juchem—R	Dr. C. M. Morgan—R	Sabino Archuleta—D	John A. Peterson—R	Geo. S. Green—R	28
k—R	A. T. Maserang—R	Reuben B. Rittgers—D	Fred J. McNair—D	H. B. Amyx—D	O. A. Saunders—R	William Simpson—R	James G. Biggins, Jr.—R	P. L. Reed—R	29
—R	George B. Black—R	Mrs. Mabel Boger—R	A. L. Kroeger—R	Mrs. Virginia E. Felch—R	Harold Barnes—D	James G. Biggins, Jr.—R	E. T. Hawthorne—R	Tom Kennedy—R	30
—R	E. M. Short—R	Margaret A. Schraeder—R	Sidney W. Cooper—R	Lucy E. Cramer—R	Dr. M. E. Robinson—R	Dr. M. E. Robinson—R	Harley Rhoades—R	Charles W. Sundquist—R	31
—R	Charles H. Schlaepfer—R	W. E. Buchanan—D	Frank Ciocchetto—D	Korleen Davies Mason—D	James J. Corbett—D	Irwin Maxwell	George F. Burke—D	Peter Scott—R	32
—R	Julia J. Hamilton—R	Kenneth A. Johnson—D	James W. Pershing—R	Mrs. Florence Irwin—R	Edward Toupal—D	Kendall Hammond—R	D. W. Sexton—R	John G. Nesbit—R	33
—R	G. R. Cushing—R	Maupin Woodson—D	J. E. Youngquist—R	William H. Haxby—D	Velman Seal—R	Edward Toupal—D	Ernest A. Fischer—R	Harry Pople—R	34
—R	Nick Bisulco—D	R. J. Barngrover	Roy L. George—D	Eddy Webb—R	A. D. Jackson—R	Harley Rhoades—R	Arthur Winter—R	Oscar V. Hillenkamp—D	35
—R	Mrs. Jewell Nail Mohan—D	Joseph A. Davis—R	Don C. LaFont—D	Miss Faith Taylor—R	T. W. Gardner—R	T. H. McCallum—R	Arthur Winter—R	T. J. Crichton—R	36
—R	Marguerite Griffith—R	Mrs. Lucy E. Hogan—D	Herman Fegert—D	Mrs. Sadie E. Hogsett—D	C. Stanley Parker—R	T. E. Breezely—R	Ernest A. Fischer—R	Oscar C. Mayne—D	37
—R	Miss Gladys Moss—D	Wm. T. Jackson—R	Davis C. Hickman	Lucien Freedle—R	I. J. Robacker—D	H. Grady Puett—D	John G. Nesbit—R	W. Wallace Wright—D	38
—R	Willard I. Caton—R	Ralph L. White—D	J. E. McDaniel—R	Viola Rudd—D	J. W. Ertel—R	E. C. Hosselkus—D	Harry Pople—R	Van A. James—R	39
—R	J. W. Self—R	C. R. Hickman—D	N. M. MacNeill—D	Mrs. Lotta W. Manaugh—R	Isaiah Knott—D	Waller Barnes—D	Harry Pople—R	Ira Kelly—R	40
—R	Mrs. Katie Brumley—R	Clide N. McClean—R	Vincent Guthrie—D	Mrs. Helen W. Brown—D	E. H. Robinson—R	Harry Rogers—R	Harry Pople—R	Neis Jacobson—R	41
—R	Mrs. Mildred Johnson—D	Hugh R. Smith—R	Franklin Shafer—D	Rose B. Glassey—D	Carl M. Ustick—R	Clyde Porter—D	Harry Pople—R	W. J. Murchy—R	42
—R	Mary Terriere—D	Ruth W. Wallis—D	Gerald F. Galloway—R	William H. Hogsett—R	Leo Flor—D	Scott Crook—R	Harry Pople—R	Albert D. Miller—R	43
—R	Miss Leah M. Ryder—R	Marguerite MacLennan—R	Glenn A. White—D	Cora A. Orendorf—R	Dr. John A. Pollice—R	E. A. McGlothlin—R	Harry Pople—R	G. U. Brown—D	44
—R	Edward Jelsma—D	Mrs. Ethel J. Willmarth—R	Frank Willoughby	Miss Lois M. Morey—R	H. B. Radford—D	Wm. McCullough—D	Harry Pople—R	Claude L. Logue—R	45
—R	Clarence S. Bullock—R	George A. Barker—R	Oscar Hellbeck—R	Gladys Hofmeister—R	T. J. Sardy—D	D. F. Sagehorn—R	Harry Pople—R	Arthur Falk—R	46
—R	Leon Kepler—R	Frances Willoughby—R	J. R. Botleman—D	Mrs. Lettie Lee Brand—D	Dr. C. T. Knuckey—R	George W. Smith—D	Harry Pople—R	Orest A. Gerbaz—D	47
—R	Miss Louise M. Berg	Miss Madge L. Creaghe—D	Robert D. White—R	Mrs. Bernice Wilmoth—R	Dr. C. N. Caldwell—D	William N. Wilson—R	Harry Pople—R	W. H. Straney—R	48
—R	E. R. Jones—R	J. R. Botleman—D	Antonio J. N. Valdez—R	Mrs. Nettie S. Freed—R	Mrs. Edna Colescott—D	J. W. Goss—D	Harry Pople—R	Pete Hughes—D	49
—R	Ray L. Hayes—D	Robert D. White—R	M. M. Burch—D	Mrs. Josephine Holland—D	Mrs. Myrtle C. Woods—R	Thomas Franks—R	Harry Pople—R	James Cordes—D	50
—R	John E. Wix—R	Antonio J. N. Valdez—R	Fay Fennell—R	Mrs. Ruth M. Mathias—R	A. W. Heyer—D	George F. Millikin—D	Harry Pople—R	Ralph Off—R	51
—R	Lee A. Ruark—D	M. M. Burch—D	Joe Dresback—D	Stanley Dismuke—D	Howard Burruss—R	George H. Luekens—D	Harry Pople—R	Joseph F. Long—D	52
—R	John W. Cole—D	Fay Fennell—R	Miss Alice N. Lindgren—D	Adrian Proffitt	Wm. E. Maguire—D	George H. Curtis—R	Harry Pople—R	W. E. Gardner—D	53
—R	Birt Clare—D	Joe Dresback—D	Chas. M. Slusser—R	Julian Lee Hayes—R	Dr. J. J. Parker—D	C. W. Fleming—R	Harry Pople—R	John Glanville—R	54
—R	Wm. Palmquist—D	Miss Alice N. Lindgren—D	Edward A. Carlson, Jr.—R	John Foster—D	Dr. F. J. Hilderman—R	W. I. Wilson—D	Harry Pople—R	Wm. Finnegan—D	55
—R	H. E. Dill—D	Mrs. Etta M. Gibson—R	Malcolm E. Burns—D	Chas. M. Slusser—R	L. C. Owens—D	G. H. Austin—D	Harry Pople—R	Martin C. Sorensen—D	56
—R	Mrs. Mabel Cavender—R	Melissa H. Hayden—R	E. E. Hickman—R	Edward A. Carlson, Jr.—R	A. C. Denman—D	N. C. Miller—D	Harry Pople—R	Earl W. Rice—D	57
—R	M. J. Waltz—R	Mrs. K. C. Gustin	L. L. Stimson—R	Chas. M. Slusser—R	Harvey Benjamin—R	Alf Coulson—R	Harry Pople—R	Jim Wild—D	58
—R	John H. White—R	Mrs. Minnie Blausner—R	W. B. Coston—D	Edward A. Carlson, Jr.—R	T. C. Wilmoth—D	V. E. Beck—R	Harry Pople—R	Otto Muchow—R	59
—R	Mrs. Blanche D. Avery—R	Albert Luther—R	W. B. Coston—D	Malcolm E. Burns—D	Paul Morris—R	Fred Ford—D	Harry Pople—R	Harley Warren—R	60
—R	Ross Shaklee—D	Esther Cassin—R	W. B. Coston—D	E. E. Hickman—R	W. A. Thompson—R	W. A. Thompson—R	Harry Pople—R	Frank D. Catchpole—R	61
—R	Buffer Roberts—R	Esther Cassin—R	W. B. Coston—D	L. L. Stimson—R	W. A. Thompson—R	W. A. Thompson—R	Harry Pople—R	Henry D. Witte—R	62
—R	Buffer Roberts—R	Esther Cassin—R	W. B. Coston—D	W. B. Coston—D	W. A. Thompson—R	W. A. Thompson—R	Harry Pople—R	Henry D. Witte—R	63

