

STATE OF COLORADO

# Abstract of Votes Cast

AT THE

## PRIMARY ELECTION

Held on the Tenth Day of September, A. D. 1940

AND AT THE

## GENERAL ELECTION

Held on the Fifth Day of November, A. D. 1940

FOR

Presidential Electors, Congressmen, State Legislative  
and District Officers

AND

Proposed Constitutional Amendments, Initiated  
and Referred Bills

ALSO

Directory of the United States, State Legislative,  
District and County Officers



COMPILED FROM OFFICIAL RETURNS  
BY

WALTER F. MORRISON  
Secretary of State

1940

PRICE, 50 CENTS

ABSTRACT OF VOTES CAST AT A PRIMARY ELECTION HELD ON TUESDAY, SEPTEMBER 10TH, A. D. 1940, FOR JUSTICE

	JUSTICES OF SUPREME COURT				GOVERNOR				LIEUTENANT GOVERNOR			SECRETARY OF STATE				STATE A
	Benjamin C. Hilliard—Dem.	George A. Luxford—Rep.	George H. Bradfield—Rep.	Frank Seydel—Rep.	George E. Saunders—Dem.	John A. Carroll—Dem.	George J. Knapp—Dem.	Ralph L. Carr—Rep.	John J. Downey—Dem.	Curtis F. Ritchie—Dem.	John C. Vivian—Rep.	Don B. Latta—Dem.	Hunt Winn—Dem.	Walter F. Morrison—Rep.	Neal W. Brown—Rep.	A. P. Ardourel—Dem.
Adams	1,787	959	673	103	1,244	943	82	1,773	1,033	865	1,643	1,051	841	1,247	461	1,711
Alamosa	2,681	1,519	133	11	321	427	25	346	239	317	412	273	243	243	81	613
Arapahoe	2,362	1,745	833	172	1,461	1,160	103	2,724	1,378	1,061	2,602	1,386	963	1,809	802	2,208
Archuleta	250	151	164	24	275	72	10	381	292	57	296	174	124	238	99	239
Baca	625	197	265	53	368	456	49	640	457	226	568	343	334	405	139	581
Bent	3,715	1,883	2,291	244	485	453	45	572	335	524	376	421	391	1,449	1,399	2,339
Boulder	3,713	1,292	2,391	244	2,931	1,780	171	3,947	2,277	1,900	3,789	1,132	3,328	2,752	1,449	663
Chaffee	789	193	166	25	705	250	141	403	555	382	380	567	366	240	1,055	3,704
Cheyenne	316	132	257	30	325	72	14	424	243	105	392	255	97	304	163	800
Clear Creek	627	193	101	23	506	252	16	331	396	239	314	317	361	201	113	289
Conejos	393	541	553	145	361	170	17	1,310	333	153	1,092	324	158	1,010	293	615
Costilla	894	50	46	4	1,194	186	55	115	748	306	107	743	261	69	371	371
Crowley	401	187	360	28	327	151	41	672	288	175	607	241	180	463	19	840
Custer	169	140	191	32	172	31	22	400	122	76	342	125	67	273	141	399
Delta	853	328	516	56	806	219	104	969	637	338	913	581	381	348	273	166
Denver	41,568	18,433	3,968	1,817	21,763	23,540	1,068	23,562	19,826	22,032	23,173	27,122	13,848	17,361	5,325	38,882
Dolores	327	36	157	15	359	77	33	246	378	66	201	186	179	131	84	323
Douglas	314	239	244	32	256	120	14	526	194	133	478	193	133	329	171	282
Eagle	606	217	173	24	577	206	13	446	474	234	411	445	239	295	114	596
Elbert	395	166	202	17	326	176	28	418	268	171	378	349	249	248	144	355
El Paso	3,827	1,812	2,098	546	2,867	1,529	277	4,879	2,245	1,837	4,614	2,949	1,134	2,717	1,587	3,544
Fremont	1,765	1,172	966	145	1,420	537	211	2,606	1,030	2,423	2,423	1,283	628	1,682	728	1,669
Garfield	1,014	664	627	93	890	422	44	1,538	733	435	1,392	589	578	1,005	406	1,021
Gilpin	188	86	51	12	204	50	2	163	108	103	140	93	93	88	48	178
Grand	284	255	186	26	247	88	9	482	182	127	447	115	195	366	96	275
Gunnison	698	112	109	108	577	237	112	237	477	357	231	408	374	155	76	663
Hinsdale	56	24	14	0	45	13	4	40	43	18	35	41	155	32	6	49
Huerfano	1,693	431	428	73	2,179	420	143	974	1,061	1,248	880	1,090	1,089	612	380	1,680
Jackson	56	33	39	3	32	37	1	72	27	37	69	23	40	52	17	57
Jefferson	2,027	1,957	1,145	220	1,440	810	42	3,284	1,173	935	3,287	1,182	865	2,380	878	1,874
Kiowa	129	112	175	17	135	33	12	315	86	59	290	93	49	235	81	125
Kit Carson	432	479	1,013	96	392	88	33	1,623	287	171	1,479	279	694	1,065	484	415
Lake	1,686	188	92	24	1,141	1,016	130	333	1,200	766	305	1,242	691	187	131	1,604
La Plata	773	159	380	29	700	264	41	607	838	111	555	399	458	342	154	792
Larimer	2,336	1,522	3,428	217	1,999	819	106	5,250	1,530	1,000	4,982	1,421	1,448	3,642	1,425	2,301
Las Animas	4,707	618	787	112	4,322	2,072	266	1,654	2,876	2,547	1,475	2,322	2,341	1,124	430	4,275
Lincoln	636	236	627	44	481	238	28	949	434	234	864	433	213	604	290	582
Logan	1,216	414	1,015	96	915	588	102	1,580	849	514	1,508	1,117	298	1,097	431	1,175
Mesa	1,328	437	673	47	999	521	73	1,223	933	478	1,173	772	589	371	292	1,260
Mineral	56	18	33	6	47	14	1	57	37	21	55	34	21	38	19	51
Moffat	498	316	360	104	451	165	19	816	388	194	784	151	423	523	239	522
Montezuma	1,023	192	532	150	1,258	249	74	989	1,242	386	838	631	677	610	303	1,071
Montrose	603	259	362	37	542	151	77	692	445	228	651	389	277	456	210	594
Morgan	1,451	684	1,430	94	1,339	552	107	2,247	1,020	616	2,091	804	780	1,711	434	1,371
Otero	1,584	457	595	68	984	807	135	1,194	720	1,017	1,127	945	725	829	307	1,479
Ouray	105	37	31	4	105	21	2	70	86	31	70	70	45	45	29	98
Park	193	138	111	20	158	56	1	281	119	83	255	145	50	95	226	179
Phillips	396	234	565	49	330	140	43	887	269	150	822	302	118	612	213	371
Pitkin	373	42	47	6	336	217	33	115	295	169	100	528	193	66	36	356
Prowers	973	452	650	82	799	361	81	1,335	588	485	1,223	528	516	944	320	900
Pueblo	7,102	1,401	1,760	265	4,161	3,277	1,040	3,522	2,238	6,165	3,410	4,776	2,333	2,206	1,233	6,787
Rio Blanco	208	263	232	23	193	74	10	544	161	72	488	116	119	385	140	214
Rio Grande	404	217	178	24	316	158	29	449	280	157	421	231	188	297	119	384
Routt	1,437	373	380	65	1,024	667	54	925	867	698	842	694	887	570	237	1,433
Saguache	246	80	93	9	228	68	30	212	163	125	193	161	111	115	85	247
San Juan	305	26	27	6	267	107	19	63	296	63	62	175	165	41	19	299
San Miguel	573	69	88	14	648	103	27	186	493	188	165	372	277	137	44	572
Sedgwick	261	290	310	29	258	80	5	675	189	97	610	220	79	496	124	260
Summit	256	133	122	26	172	142	11	315	183	103	283	86	195	154	146	253
Teller	1,790	189	245	50	1,435	506	155	523	1,031	858	462	1,860	314	314	191	1,743
Washington	879	372	865	70	844	268	43	1,400	635	339	1,263	611	364	963	333	837
Weld	3,995	1,763	7,240	351	2,832	1,790	236	9,057	2,367	2,010	8,399	1,998	2,293	8,154	1,344	3,925
Yuma	761	310	558	72	658	291	48	953	514	322	900	561	272	694	227	740
TOTAL	108,113	44,577	42,356	6,445	75,130	50,787	5,967	95,521	61,305	55,855	90,192	68,687	45,684	66,954	25,173	102,715

SECRETARY OF STATE

STATE AUDITOR

STATE TREASURER

ATTORNEY GENERAL

SUPT. PUBLIC INSTRUCTION

REGENTS UNIVERSITY OF COLORADO

Table with 16 columns representing different offices and their respective budgets. Columns include: Hunt Winn (Dem.), Walter F. Morrison (Rep.), Neal W. Brown (Rep.), A. P. Ardourel (Dem.), Chas. M. Armstrong (Rep.), Lew M. Appel (Dem.), Homer F. Bedford (Dem.), Albert F. Cruise (Rep.), James E. Griffith (Dem.), Gail L. Ireland (Rep.), Arthur M. Morris (Rep.), Inez Johnson Lewis (Dem.), Lucile Horton Lattig (Rep.), M. D. Currrigan (Dem.), Clifford W. Mills (Dem.), Val B. Fischer (Dem.), John L. Faricy (Dem.), Frank D. Allen (Rep.), John Andrew (Rep.). Each column lists numerous numerical entries representing budget items, with a total at the bottom of each column.

45,684 66,954 25,173

102,715 91,940

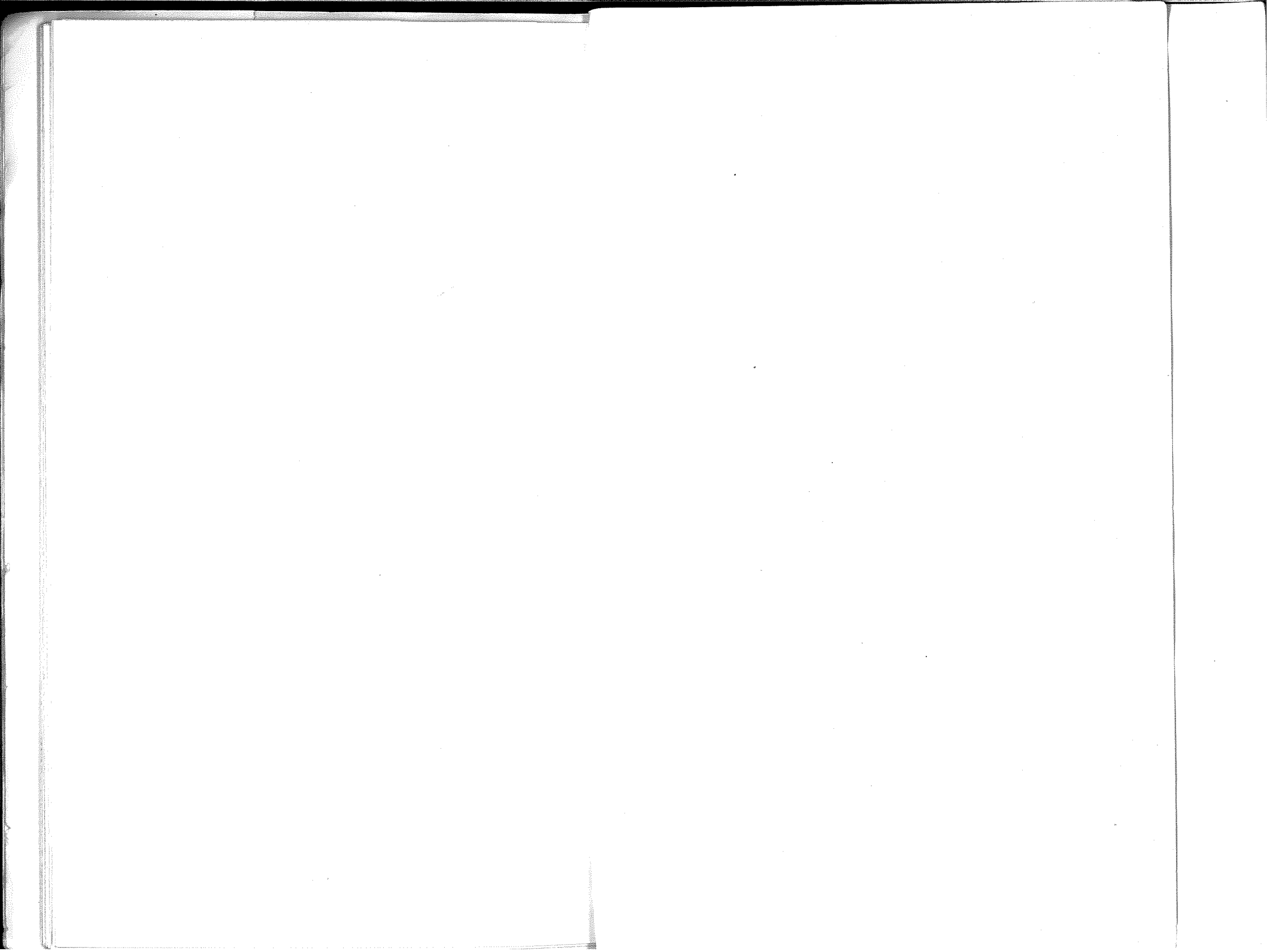
43,961 79,049 87,838

107,693 56,829 36,014

109,372 85,090

68,609 65,831 42,814 23,779 77,557

67,679



**CONGRESSMAN, FIRST CONGRESSIONAL DISTRICT**

County	Lawrence Lewis —D		James D. Parriott —R		George T. Evans —R	James Allander —Com.	Ward Rogers —Soc.
	P. E.	G. E.	P. E.	G. E.	P. E.	G. E.	G. E.
Denver .....	41,396	110,078	16,143	59,427	7,582	272	577

**CONGRESSMAN, SECOND CONGRESSIONAL DISTRICT**

County	Fred Cummings —D		William S. Hill —R		William R. Kelly —R	Robert F. Billings —Peace	Henry Neumann —Soc.
	P. E.	G. E.	P. E.	G. E.	P. E.	G. E.	G. E.
Adams .....	1,834	4,706	1,165	4,184	594	14	47
Arapahoe .....	2,344	7,435	2,184	7,518	629	22	79
Boulder .....	3,800	8,885	2,804	9,305	1,220	38	100
Cheyenne .....	339	833	367	799	109	5	6
Clear Creek.....	656	1,203	234	919	93	3	11
Douglas .....	318	846	471	1,181	77	2	8
Elbert .....	414	1,137	300	1,487	101	5	7
Gilpin .....	198	438	123	373	32	4	1
Jefferson .....	2,009	8,034	2,355	7,969	965	32	51
Kit Carson.....	459	1,185	1,339	2,306	328	12	9
Larimer .....	2,424	6,840	4,259	8,646	1,239	37	24
Lincoln .....	647	1,283	661	1,661	252	5	2
Logan .....	1,351	3,188	932	4,368	681	30	11
Morgan .....	1,616	3,119	1,189	3,805	1,179	35	8
Phillips .....	438	1,098	679	1,244	205	3	25
Sedgwick .....	291	990	507	1,328	193	3	3
Washington .....	958	1,388	947	2,138	441	7	8
Weld .....	4,188	11,870	2,886	14,678	6,725	61	63
Yuma .....	832	2,184	692	2,950	255	23	15
	25,116	66,662	24,094	76,859	15,318	341	478

**CONGRESSMAN, THIRD CONGRESSIONAL DISTRICT**

County	J. Edgar Chenoweth —R		Byron G. Rogers —D	
	P. E.	G. E.	P. E.	G. E.
Alamosa .....	308	1,923	669	1,919
Baca .....	533	1,434	698	1,250
Bent .....	476	1,605	863	2,083
Conejos .....	1,039	1,994	402	1,692
Costilla .....	91	1,102	836	1,482
Crowley .....	571	1,276	411	934
Custer .....	331	713	191	441
El Paso .....	4,593	16,132	4,043	13,459
Fremont .....	2,226	4,929	1,819	3,961
Huerfano .....	720	2,907	1,781	3,580
Kiowa .....	285	863	142	683
Las Animas.....	1,678	7,534	5,142	5,178
Mineral .....	53	214	55	256
Otero .....	1,122	5,006	1,675	4,368
Prowers .....	1,173	2,890	1,034	2,339
Pueblo .....	3,432	14,835	7,405	16,848
Rio Grande.....	409	2,842	400	1,879
Saguache .....	184	1,460	260	998
Teller .....	458	1,183	1,831	1,919
	19,351	70,842	29,657	65,269

**CONGRESSMAN, THIRD CONGRESSIONAL DISTRICT TO FILL VACANCY**

County	William E. Burney —D		Henry Leonard —R		Chas. Allen —D	W. T. Mathias —D
	P. E.	G. E.	P. E.	G. E.	P. E.	P. E.
Alamosa .....	2	2,332	19	2,084	243	...
Baca .....	...	1,216	4	1,322	...	1
Bent .....	23	1,783	...	1,754	...	...
Conejos .....	...	1,737	...	2,004	...	...
Costilla .....	...	1,469	...	1,064	28	...
Crowley .....	6	893	51	1,233	...	...
Custer .....	1	475	22	634	...	...
El Paso.....	...	12,603	319	16,524	...	...
Fremont .....	46	3,993	137	4,645	7	...
Huerfano .....	1	3,824	...	2,681	2	...
Kiowa .....	...	644	16	841	...	17
Las Animas.....	15	7,366	12	4,540	10	...
Mineral .....	...	250	...	211	...	...
Otero .....	6	4,236	84	4,952	14	...
Prowers .....	1	2,296	81	2,720	...	9
Pueblo .....	1,444	18,225	1,361	13,177	123	27
Rio Grande.....	...	1,954	18	2,724	27	...
Saguache .....	...	1,055	7	1,386	21	...
Teller .....	...	1,874	...	1,179	...	...
	1,545	68,225	2,631	65,675	475	54

**CONGRESSMAN, FOURTH CONGRESSIONAL DISTRICT**

County	Paul W. Crawford —R		Edward T. Taylor —D	
	P. E.	G. E.	P. E.	G. E.
Archuleta .....	294	576	303	649
Chaffee .....	372	1,428	916	2,292
Delta .....	908	2,557	965	3,607
Dolores .....	201	363	372	442
Eagle .....	409	1,185	705	1,334
Garfield .....	1,303	2,350	1,154	2,614
Grand .....	416	813	297	1,032
Gunnison .....	217	827	818	2,348
Hinsdale .....	35	105	57	148
Jackson .....	64	429	62	443
Lake .....	293	1,566	1,894	1,955
La Plata.....	517	2,740	876	3,172
Mesa .....	1,112	4,626	1,355	9,133
Moffat .....	755	1,308	556	1,079
Montezuma .....	730	1,548	1,358	1,919
Montrose .....	609	2,489	654	3,969
Ouray .....	44	349	116	796
Park .....	259	835	202	973
Rio Blanco.....	88	285	504	631
Routt .....	437	866	231	631
San Juan.....	785	1,688	1,525	2,908
San Miguel.....	59	291	343	409
Summit .....	165	500	681	1,037
	188	402	246	574
	10,260	30,126	16,190	44,095

**STATE SENATOR, FIRST SENATORIAL DISTRICT, DENVER COUNTY**

	P. E.	G. E.
Bratton, Leslie E.—R.....	15,885	77,164
Constantine, Joseph P.—D.....	21,843	90,305
Hart, Stephen H.—D.....	25,674	96,854
Harpel, John J.—R.....	17,511	78,909
Higgins, Val—D.....	19,001	.....
Hirschfeld, A. B.—D.....	31,132	88,452
King, Harold Taft—R.....	14,790	71,786
Laws, Arthur H.—R.....	11,092	.....
Latimer, M. R.—D.....	20,995	.....
Minister, Howard L.—R.....	6,353	.....
Smith, Eudochia Bell—D.....	23,238	81,169
Smith, J. Edgar—R.....	14,208	71,248
Stackhouse, Fred D.—R.....	11,996	.....
Strong, Charles D.—D.....	20,256	.....
Andersen, Harry—Soc.....	.....	1,254
Barnetson, George K.—Soc.....	.....	886
Kinder, Francis S.—Soc.....	.....	966
Sherman, Edgar P.—Soc.....	.....	1,103

**STATE SENATOR, SECOND SENATORIAL DISTRICT**

County	Glen W. Boyce —R		Walter W. Johnson —D	
	P. E.	G. E.	P. E.	G. E.
Pueblo .....	3,203	14,556	6,901	17,079

**STATE SENATOR, THIRD SENATORIAL DISTRICT**

County	Samuel R. Berkley —D		William E. Higby —R	
	P. E.	G. E.	P. E.	G. E.
El Paso.....	3,683	13,022	4,591	16,234

**STATE SENATOR, THIRD SENATORIAL DISTRICT, TO FILL VACANCY**

County	Frederick T. Henry —D		Harry D. MacDonald —R	
	P. E.	G. E.	P. E.	G. E.
El Paso.....	3,549	12,933	4,351	15,824

**STATE SENATOR, FOURTH SENATORIAL DISTRICT**

County	Andy McDonald —R		Ben Veltri —D		H. L. L. Anderson —D		Isidor Bueno —R		Paul J. Cordova —Ind.	
	P. E.	G. E.	P. E.	G. E.	P. E.	G. E.	P. E.	G. E.	P. E.	G. E.
Las Animas.....	1,298	5,872	3,779	5,920	2,506	.....	457	.....	1,197	.....

**STATE SENATOR, FIFTH SENATORIAL DISTRICT**

County	Theo. G. Lashley —R		James R. Lord —D		Rudolph Johnson —D	
	P. E.	G. E.	P. E.	G. E.	P. E.	G. E.
Boulder .....	3,586	10,957	2,807	7,734	1,705	.....

**STATE SENATOR, SEVENTH SENATORIAL DISTRICT**

County	Walter L. Bain —R		S. K. Clark —D	
	P. E.	G. E.	P. E.	G. E.
Weld .....	8,179	15,401	.....	10,447

**STATE SENATOR, EIGHTH SENATORIAL DISTRICT**

County	Harold Ward Gardener —R		Dave C. Johnston —D		John R. Browne —R	
	P. E.	G. E.	P. E.	G. E.	P. E.	G. E.
Douglas .....	196	1,184	309	819	280	.....
Jefferson .....	1,784	8,218	1,953	8,046	1,607	.....
	1,980	9,402	2,262	8,865	1,887	.....

**STATE SENATOR, NINTH SENATORIAL DISTRICT**

County	Chas. W. F. Meyer —R		Edwin C. Watts —D	
	P. E.	G. E.	P. E.	G. E.
Custer .....	317	657	171	506
Fremont .....	2,110	4,189	1,803	4,817
	2,427	4,846	1,974	5,323

**STATE SENATOR, ELEVENTH SENATORIAL DISTRICT**

County	Robert F. Rockwell —R	
	P. E.	G. E.
Delta .....	934	5,831
Gunnison .....	227	2,463
Hinsdale .....	39	211
	1,200	8,505

**STATE SENATOR, THIRTEENTH SENATORIAL DISTRICT**

County	Charles P. Murphy —R		Ernest Todd —D	
	P. E.	G. E.	P. E.	G. E.
Grand .....	444	1,206	272	701
Jackson .....	72	750	58	158
Moffat .....	761	1,370	520	1,071
Rio Blanco.....	462	971	198	519
Routt .....	805	2,131	1,501	2,848
	2,544	6,428	2,549	5,297

**STATE SENATOR, NINETEENTH SENATORIAL DISTRICT**

County	James B. Decker —R		John W. Turner —D	
	P. E.	G. E.	P. E.	G. E.
Archuleta .....	286	710	257	698
La Plata .....	569	3,101	859	3,454
Montezuma .....	828	2,076	1,098	1,559
San Juan.....	58	314	307	466
	1,741	6,201	2,521	6,177

**STATE SENATOR, TWENTY-FIRST SENATORIAL DISTRICT**

County	Robert D. Elder —D		W. G. McDonald —R		W. H. Twinning —D
	P. E.	G. E.	P. E.	G. E.	P. E.
Eagle	335	1,442	384	1,016	354
Garfield	533	1,792	1,398	3,093	649
Lake	1,373	2,208	295	1,345	748
Pitkin	102	513	90	421	540
Summit	153	518	260	456	133
	2,496	6,473	2,427	6,331	2,424

**STATE SENATOR, TWENTY-SECOND SENATORIAL DISTRICT**

County	Harold H. Davies —R		W. J. Parrish —D		William E. Randall —Soc.
	P. E.	G. E.	P. E.	G. E.	G. E.
Arapahoe	2,539	7,988	2,238	6,982	126
Elbert	361	1,612	357	928	8
	2,900	9,600	2,595	7,910	134

**STATE SENATOR, TWENTY-THIRD SENATORIAL DISTRICT**

County	J. D. Craighead —D		James B. Ryan —R		James Taylor —D
	P. E.	G. E.	P. E.	G. E.	P. E.
Crowley	143	952	583	1,198	316
Otero	1,106	4,482	1,123	5,138	719
	1,249	5,434	1,706	6,336	1,035

**STATE SENATOR, TWENTY-FOURTH SENATORIAL DISTRICT**

County	Charles D. Minshall —D		Willard B. Preston —R	
	P. E.	G. E.	P. E.	G. E.
Adams	1,741	4,329	1,558	4,705
Morgan	1,315	2,593	1,969	4,204
	3,056	6,922	3,527	8,909

**REPRESENTATIVE, THIRTY-THIRD GENERAL ASSEMBLY, COUNTY OF ADAMS**

	P. E.	G. E.
Patton, David—D.....	1,692	4,413
Shotwell, L. D., Jr.—R.....	1,509	4,587

**REPRESENTATIVE, THIRTY-THIRD GENERAL ASSEMBLY, COUNTIES OF ALAMOSA AND COSTILLA**

County	Everett Cole —R		George Lorton —D	
	P. E.	G. E.	P. E.	G. E.
Alamosa	260	1,952	623	2,703
Costilla	96	1,127	967	1,586
	356	3,079	1,590	4,289

**REPRESENTATIVE, THIRTY-THIRD GENERAL ASSEMBLY, COUNTIES OF ARAPAHOE AND ELBERT**

	Arapahoe		Elbert		Total	
	P. E.	G. E.	P. E.	G. E.	P. E.	G. E.
Beuck, Fred A.—R.....	1,971	7,439	373	1,648	2,344	9,087
Bostrom, Emil R.—D.....	1,699	6,977	355	1,199	2,054	8,176
Glasier, John T.—D.....	2,071	7,059	338	906	2,409	7,965
Lovelace, Stuart H.—R.....	2,265	7,500	277	1,183	2,542	8,683
Baker, Wm. H.—Soc.....	...	127	...	14	...	141
Harrison, Joe H.—Soc.....	...	107	...	7	...	114

**REPRESENTATIVE, THIRTY-THIRD GENERAL ASSEMBLY, COUNTIES OF ARCHULETA AND CONEJOS**

County	A. B. Bailey —R		Frank C. Belt —D	
	P. E.	G. E.	P. E.	G. E.
Archuleta	296	735	251	680
Conejos	1,139	2,216	437	2,153
	1,435	2,951	688	2,833

**REPRESENTATIVE, THIRTY-THIRD GENERAL ASSEMBLY, COUNTY OF BACA**

County	Fred E. Bear —R		Walter A. Rhodes —D		Ralph St Aubyn —D
	P. E.	G. E.	P. E.	G. E.	P. E.
Baca	618	1,672	538	1,188	340

**REPRESENTATIVE, THIRTY-THIRD GENERAL ASSEMBLY, COUNTIES OF BENT AND KIOWA**

County	Leonard H. Hudnall —D		H. H. King —R	
	P. E.	G. E.	P. E.	G. E.
Bent	791	2,242	489	1,522
Kiowa	141	607	305	975
	932	2,849	794	2,497

**REPRESENTATIVE, THIRTY-THIRD GENERAL ASSEMBLY, COUNTY OF BOULDER**

	P. E.	G. E.
Blum, Robert V.—D.....	3,427	9,364
Coleman, A. Dean—R.....	3,373	10,593
Higman, Howard—D.....	3,063	7,934
Newrock, Ben—R.....	2,892	7,351

**REPRESENTATIVE, THIRTY-THIRD GENERAL ASSEMBLY, COUNTIES OF CHAFFEE AND LAKE**

County	Frank Fehling —R		E. J. Levin —D		William D. O'Brien —D
	P. E.	G. E.	P. E.	G. E.	P. E.
Chaffee	393	2,452	...	1,539	864
Lake	302	1,799	...	1,769	1,690
	695	4,251	...	3,308	3,348

ABSTRACT OF VOTES CAST

REPRESENTATIVE, THIRTY-THIRD GENERAL ASSEMBLY,  
COUNTIES OF CHEYENNE AND LINCOLN

County	O. C. Allen —D		A. H. Brentlinger —R	
	P. E.	G. E.	P. E.	G. E.
	Cheyenne	314	522	427
Lincoln	630	1,564	838	1,380
	944	2,086	1,265	2,546

REPRESENTATIVE, THIRTY-THIRD GENERAL ASSEMBLY,  
COUNTIES OF CLEAR CREEK, EAGLE, GILPIN, PITKIN AND SUMMIT

County	Clifford I. Parsons —D		W. A. Roberts	Robert A. Theobald —D
	P. E.	G. E.	G. E.	P. E.
	Clear Creek	459	1,189	1,074
Eagle	445	1,472	999	272
Gilpin	128	631	231	43
Pitkin	306	613	293	224
Summit	152	575	415	181
	1,490	4,480	3,012	977

REPRESENTATIVE, THIRTY-THIRD GENERAL ASSEMBLY,  
COUNTIES OF CROWLEY AND OTERO

	P. E.		G. E.		Total	
	P. E.	G. E.	P. E.	G. E.	P. E.	G. E.
	Douglas, Henry A.—R	456	1,124	1,024	5,596	1,480
Luginbill, A. J.—D	...	739	70	4,685	70	5,424
Pleiman, T. H.—D	369	805	1,239	3,414	1,608	4,219
Ward, Arlie M.—R	595	1,303	918	4,597	1,513	5,900

REPRESENTATIVE, THIRTY-THIRD GENERAL ASSEMBLY,  
COUNTIES OF CUSTER AND FREMONT

County	Rockwell B. Canda —R		Albert E. Fearheiley —D		A. H. Sparks —R
	P. E.	G. E.	P. E.	G. E.	P. E.
	Custer	314	738	158	445
Fremont	1,392	5,061	1,535	3,870	1,210
	1,706	5,799	1,693	4,315	1,359

REPRESENTATIVE, THIRTY-THIRD GENERAL ASSEMBLY,  
COUNTY OF DELTA

County	Harry Sanburg —R		J. C. Stephens —D		A. C. Tinsley —D
	P. E.	G. E.	P. E.	G. E.	P. E.
	Delta	895	3,700	548	3,426

REPRESENTATIVE, THIRTY-THIRD GENERAL ASSEMBLY,  
CITY AND COUNTY OF DENVER

	P. E.	G. E.
Alden, Lambert—R	19,350	77,552
Atchison, Clyde A.—R	13,899	...
Avoy, Joseph T.—D	23,002	82,822
Bacon, C. Bus—D	22,698	...
Baker, George J.—D	29,794	86,597
Batholic, Arthur W.—R	9,980	...
Benedict, Mitchell—R	16,178	78,099
Black, William A.—R	20,470	81,582
Bloye, Roy C.—R	15,892	73,339
Bolger, Donald Paul—D	21,721	...
Butler, Lansford F.—R	20,050	72,830
Chrysler, Roy—R	21,131	80,011
Coloroso, Dominic A.—D	27,296	92,030
Crowley, Clem—D	32,136	88,121
Cutler, Frank H.—R	16,212	69,933
Daumann, Nelson W.—D	18,140	...
Davis, W. G.—D	27,109	83,816
Draper, Cecil—R	19,338	75,644
Frantz, Albert T.—D	17,231	...
Gertz, A. G.—R	14,086	...
*Godsman, Sidney P.—R	17,388	...
Grimes, Irving—D	31,681	94,162
Hansen, Fitch P.—D	19,114	...
Haskell, Charles A.—R	16,946	74,803
Henry, Lawrence M.—D	25,502	80,734
†Hersom, Maurine Thauer—R	10,841	63,046
Hickerson, William B.—D	27,622	82,945
Ionides, Stephen A.—R	16,977	68,285
Jennings, William J.—D	28,758	84,284
Johnson, Wesley—D	23,248	81,735
King, Harry A.—D	27,035	86,166
Kline, Herman—D	26,359	79,087
Kramer, Florence H.—D	28,988	83,884
Lewis, William A.—R	21,018	79,971
Mann, Earl W.—	17,496	69,001
Mayfield, William T.—R	15,712	66,595
McDonald, Michael D.—D	33,699	81,277
Morrissey, John J., Jr.—D	29,127	85,099
Musick, J. Roger—R	18,496	72,016
Sperling, Si—D	11,135	...
Staples, Harry Bradley—D	19,056	...
Brier, Paine—Soc	...	1,567
Holland, Winifred—Soc	...	1,811
Jones, Pearl—Soc	...	1,456
Watson, Roy	...	1,589

\*Withdrew after Primary election.  
†Appointed to fill vacancy.

REPRESENTATIVE, THIRTY-THIRD GENERAL ASSEMBLY,  
COUNTIES OF DOLORES, MONTEZUMA AND SAN MIGUEL

County	C. C. McAfee —R		Elizabeth E. Pellet —D		Tom H. Akin —D
	P. E.	G. E.	P. E.	G. E.	P. E.
	Dolores	217	374	357	527
Montezuma	905	2,015	787	1,770	975
San Miguel	155	554	488	1,027	261
	1,277	2,943	1,632	3,324	1,401



ABSTRACT OF VOTES CAST

**REPRESENTATIVE, THIRTY-THIRD GENERAL ASSEMBLY,  
COUNTIES OF DOUGLAS, PARK AND TELLER**

County	Aden E. (Pat) Coleman —D		J. Fred Thomas —R		John J. Butler —D	James C. Lang —D	Ernest H. Sterling —D
	P. E.	G. E.	P. E.	G. E.	P. E.	P. E.	P. E.
Douglas .....	21	657	473	1,353	32	255	70
Park .....	49	835	262	1,016	31	95	42
Teller .....	796	1,832	488	1,535	679	345	302
	866	3,324	1,223	3,904	742	695	414

**REPRESENTATIVE, THIRTY-THIRD GENERAL ASSEMBLY,  
COUNTY OF EL PASO**

	P. E.	G. E.
Cheever, Vernon—R.....	4,011	18,510
Cowen, W. W.—R.....	3,826	17,311
Dutcher, Oliver H.—D.....	3,284	11,829
Fontecchio, Dante—D.....	2,892	9,945
Heinicke, Alfred—D.....	3,082	12,017
Phillips, J. O.—R.....	3,766	16,292

**REPRESENTATIVE, THIRTY-THIRD GENERAL ASSEMBLY  
COUNTIES OF GARFIELD AND RIO BLANCO**

County	E. E. Fordham —R		H. E. (Dick) Raley —D	
	P. E.	G. E.	P. E.	G. E.
Garfield .....	1,402	3,186	960	1,779
Rio Blanco.....	501	1,103	205	439
	1,903	4,289	1,165	2,218

**REPRESENTATIVE, THIRTY-THIRD GENERAL ASSEMBLY,  
COUNTIES OF GRAND, MOFFAT AND ROUTT**

County	R. I. Gwillim —R		Pat Magill, Jr. —D		Herman Fegert —D	Claude A. Smith —D
	P. E.	G. E.	P. E.	G. E.	P. E.	P. E.
Grand .....	424	1,051	150	838	65	84
Moffat .....	756	1,380	120	1,177	403	94
Route .....	831	2,056	900	2,908	284	511
	2,011	4,487	1,170	4,923	752	689

**REPRESENTATIVE, THIRTY-THIRD GENERAL ASSEMBLY,  
COUNTIES OF GUNNISON, HINSDALE AND SAGUACHE**

County	H. G. Lashbrook —R	
	P. E.	G. E.
Gunnison .....	227	2,496
Hinsdale .....	37	207
Saguache .....	185	1,724
	449	4,427

**REPRESENTATIVE, THIRTY-THIRD GENERAL ASSEMBLY,  
COUNTY OF KUERFANO**

	P. E.	G. E.
Penny, Neil—D.....	1,831	3,226
Vigil, Daniel—R.....	917	3,567

**REPRESENTATIVE, THIRTY-THIRD GENERAL ASSEMBLY  
COUNTIES OF JACKSON AND LARIMER**

County	Victor Hanson —R		E. I. (Ted) Herring —R		James Jensen —D		Paul M. Maxwell —D	
	P. E.	G. E.	P. E.	G. E.	P. E.	G. E.	P. E.	G. E.
Jackson ..	69	727	61	629	49	193	40	167
Larimer ..	3,995	10,241	4,412	11,212	1,991	5,679	1,975	5,469
	4,064	10,968	4,473	11,841	2,040	5,872	2,015	5,636

**REPRESENTATIVE, THIRTY-THIRD GENERAL ASSEMBLY,  
COUNTY OF JEFFERSON**

	P. E.	G. E.
McGrath, Wm.—D.....	1,902	7,009
Pearson, Homer L.—R.....	3,167	9,338

**REPRESENTATIVE, THIRTY-THIRD GENERAL ASSEMBLY,  
COUNTY OF KIT CARSON**

	P. E.	G. E.
Buchanan, C. J.—R.....	979	2,025
Page, Fred—D.....	458	1,493
Boggs, John S.—R.....	837	.....

**REPRESENTATIVE, THIRTY-THIRD GENERAL ASSEMBLY,  
COUNTIES OF LA PLATA AND SAN JUAN**

County	Tom Kimball —R		L. W. Parcell —D
	P. E.	G. E.	G. E.
La Plata.....	531	4,033	2,386
San Juan.....	57	285	552
	588	4,318	2,938

**REPRESENTATIVE, THIRTY-THIRD GENERAL ASSEMBLY,  
COUNTY OF LAS ANIMAS**

	P. E.	G. E.
Horsman, John—D.....	4,105	8,249
Llewellyn, Robert—R.....	970	5,188
Morgan, Wright—R.....	806	4,493
Valdez, J. C.—D.....	3,242	6,425
Cordova, Paul J.—R.....	496	.....
Mathias, Glenn O.—D.....	2,976	.....
Stancato, Lee G.—R.....	470	.....
Vigil, Frank—R.....	417	.....

**REPRESENTATIVE, THIRTY-THIRD GENERAL ASSEMBLY  
COUNTY OF LOGAN**

	P. E.	G. E.
Hamil, David A.—R.....	1,541	5,378
Heist, J. H.—D.....	1,216	2,186

**REPRESENTATIVE, THIRTY-THIRD GENERAL ASSEMBLY,  
COUNTY OF MESA**

	P. E.	G. E.
Evans, Jack—R.....	1,093	7,463
Hornbaker, J. E.—D.....	967	6,761
McMullin, Samuel G.—R.....	855	4,628
Meek, W. S.—D.....	1,122	8,081

**REPRESENTATIVE, THIRTY-THIRD GENERAL ASSEMBLY,  
COUNTIES OF MINERAL AND RIO GRANDE**

County	P. E. Harney —D		Roy McConnell —R	
	P. E.	G. E.	P. E.	G. E.
Mineral .....	56	283	52	171
Rio Grande.....	425	2,296	420	2,678
	481	2,579	472	2,849

**REPRESENTATIVE, THIRTY-THIRD GENERAL ASSEMBLY,  
COUNTIES OF MONTROSE AND OURAY**

County	J. C. Kerr —R		J. Carl Wilson —D	
	P. E.	G. E.	P. E.	G. E.
Montrose .....	652	3,424	645	3,141
Ouray .....	67	541	98	637
	719	3,965	743	3,778

**REPRESENTATIVE, THIRTY-THIRD GENERAL ASSEMBLY  
COUNTY OF MORGAN**

	P. E.	G. E.
Bartholomew, Lew E.—R.....	2,012	3,403
Glenn, George—D.....	1,174	3,703
Mitchell, W. T.—D.....	695	.....

**REPRESENTATIVE, THIRTY-THIRD GENERAL ASSEMBLY,  
COUNTIES OF PHILLIPS AND SEDGWICK**

County	William J. Jenkins —D		Roy E. Owens —R		Rubert Johnson —D
	P. E.	G. E.	P. E.	G. E.	P. E.
Phillips .....	176	924	877	1,500	301
Sedgwick .....	260	1,045	613	1,317	64
	436	1,969	1,490	2,817	365

**REPRESENTATIVE, THIRTY-THIRD GENERAL ASSEMBLY,  
COUNTY OF PROWERS**

	P. E.	G. E.
Russell, Edward O.—D.....	1,015	2,715
Strain, Marlon E.....	1,228	2,686

**REPRESENTATIVE, THIRTY-THIRD GENERAL ASSEMBLY,  
COUNTY OF PUEBLO**

	P. E.	G. E.
Booth, James W.—R.....	3,060	15,597
Cawfield, Sterling—D.....	6,165	18,547
Comings, W. B.—D.....	5,550	16,964
Dameron, Thos. H.—D.....	6,005	18,012
Ray, Paul M.—R.....	3,023	14,073
Strait, Harry—R.....	3,050	14,538
Sumey, R. W.—D.....	4,484	14,978
Young, Chester R.—R.....	3,074	14,215
Wilkes, Don Q.—D.....	4,142	.....

**REPRESENTATIVE, THIRTY-THIRD GENERAL ASSEMBLY,  
COUNTY OF WASHINGTON**

	P. E.	G. E.
Donahue, J. H.—D.....	880	1,639
Shirley, J. R.—R.....	774	2,117
Gill, Frank L.—R.....	700	.....

**REPRESENTATIVE, THIRTY-THIRD GENERAL ASSEMBLY,  
COUNTY OF WELD**

	P. E.	G. E.
Beltz, Jasper N., Sr.—D.....	2,714	9,268
Bickling, Mac—D.....	3,060	10,459
Carlson, Wm. Albion—R.....	7,351	16,191
Norcross, Fred—R.....	7,034	16,289
Ogilvie, James S.—R.....	7,423	15,832
Townsend, Charles C.—R.....	6,230	14,717
Walling, Edna U.—D.....	3,065	9,139
Wilkinson, Lacy L.—D.....	275	10,099
Payne, Shirley M.—R.....	4,915	.....

**REPRESENTATIVE, THIRTY-THIRD GENERAL ASSEMBLY,  
COUNTY OF YUMA**

	P. E.	G. E.
Tabor, Harold A.—R.....	895	3,214
Williams, Ellis L.—D.....	784	2,293

**DISTRICT ATTORNEY FIRST JUDICIAL DISTRICT**

County	Harry Behm —D		Richard H. Simon —R		Christian Dewey Stoner —R
	P. E.	G. E.	P. E.	G. E.	P. E.
Adams .....	1,886	5,424	956	3,852	714
Arapahoe .....	2,284	7,247	2,183	8,117	633
Clear Creek.....	615	1,031	176	1,215	133
Gilpin .....	193	413	76	423	71
Jefferson .....	1,930	7,748	1,098	8,724	2,236
	6,908	21,863	4,489	22,331	3,787

**DISTRICT JUDGE SECOND JUDICIAL DISTRICT  
(To Fill Vacancy)  
CITY AND COUNTY OF DENVER**

	P. E.	G. E.
Miles, Floyd F.—D.....	40,415	83,423
Sackmann, Charles C.—R.....	22,944	69,283

**DISTRICT ATTORNEY SECOND JUDICIAL DISTRICT  
CITY AND COUNTY OF DENVER**

	P. E.	G. E.
Bowman, Don D.—D.....	6,631	.....
Burke, James T.—R.....	15,295	87,560
Cummings, Ralph J.—D.....	19,195	.....
Moore, O. Otto—D.....	19,215	67,512
Robinson, Finlay M.—R.....	8,630	.....

**DISTRICT ATTORNEY THIRD JUDICIAL DISTRICT**

County	Joseph W. Hawley —R		John N. Mabry —D	
	P. E.	G. E.	P. E.	G. E.
Baca .....	519	1,404	674	1,316
Bent .....	460	1,594	765	2,028
Huerfano.....	821	2,493	1,977	4,500
Las Animas.....	1,457	5,629	5,064	7,574
Prowers .....	1,145	2,480	1,030	2,837
	<u>4,402</u>	<u>13,600</u>	<u>9,510</u>	<u>18,255</u>

**DISTRICT ATTORNEY FOURTH JUDICIAL DISTRICT**

County	Irl Foard —R		Thomas I. Purcell —D		Clyde H. Babcock —R
	P. E.	G. E.	P. E.	G. E.	P. E.
Cheyenne .....	247	844	290	743	189
Douglas .....	165	1,136	295	905	319
Elbert .....	233	1,643	373	933	167
El Paso.....	2,800	15,809	3,930	14,107	2,125
Kit Carson.....	548	2,284	418	1,059	946
Lincoln .....	287	1,584	592	1,259	564
Teller .....	265	1,318	1,752	1,955	221
	<u>4,545</u>	<u>24,618</u>	<u>7,650</u>	<u>20,961</u>	<u>4,531</u>

**DISTRICT ATTORNEY FIFTH JUDICIAL DISTRICT**

County	Harold A. Grant —R		William J. Meehan —D	
	P. E.	G. E.	P. E.	G. E.
Eagle .....	.....	986	713	1,583
Lake .....	2,347	.....	1,824	1,264
Summit .....	481	.....	269	525
	.....	<u>3,814</u>	<u>2,806</u>	<u>3,372</u>

**DISTRICT ATTORNEY SIXTH JUDICIAL DISTRICT**

County	James M. Noland		No Republican Candidate
	P. E.	G. E.	
Archuleta .....	297	924	
Dolores .....	392	606	
La Plata.....	886	4,834	
Montezuma .....	1,315	2,812	
San Juan.....	351	657	
	<u>3,241</u>	<u>9,833</u>	

**DISTRICT ATTORNEY SEVENTH JUDICIAL DISTRICT**

County	A. Allen Brown —R		William Weiser —D	
	P. E.	G. E.	P. E.	G. E.
Delta .....	922	4,620	859	2,429
Gunnison .....	218	1,558	636	1,619
Hinsdale .....	35	150	54	103
Mesa .....	1,057	6,228	1,384	8,163
Montrose .....	618	3,467	596	2,859
Ouray .....	66	563	102	612
San Miguel.....	161	592	580	904
	<u>3,077</u>	<u>17,178</u>	<u>4,211</u>	<u>16,689</u>

**DISTRICT ATTORNEY EIGHTH JUDICIAL DISTRICT**

County	Hatfield Chilson —R		Barnard Houtchens —D		Roy M. Briggs —R	M. E. H. "Marc" Smith —R
	P. E.	G. E.	P. E.	G. E.	P. E.	P. E.
Boulder .....	2,189	10,165	3,484	8,744	800	769
Jackson .....	59	531	54	322	3	5
Larimer .....	3,733	10,849	2,222	5,730	744	729
Weld .....	1,616	12,781	3,930	13,571	4,065	3,390
	<u>7,597</u>	<u>34,326</u>	<u>9,690</u>	<u>28,367</u>	<u>5,612</u>	<u>4,893</u>

**DISTRICT ATTORNEY NINTH JUDICIAL DISTRICT**

County	Carl W. Fulghum —R		Allyn Cole —R	No Democratic Candidate
	P. E.	G. E.	P. E.	
Garfield .....	1,066	4,392	609	
Pitkin .....	94	709	30	
Rio Blanco.....	265	1,228	313	
	<u>1,425</u>	<u>6,329</u>	<u>952</u>	

**DISTRICT JUDGE TENTH JUDICIAL DISTRICT  
(To Fill Vacancy)**

County	J. Arthur Phelps —R		French L. Taylor —D	
	P. E.	G. E.	P. E.	G. E.
Crowley .....	594	1,333	416	871
Kiowa .....	299	947	143	612
Otero .....	1,121	5,525	1,585	4,332
Pueblo .....	3,280	15,993	6,876	16,330
	<u>5,294</u>	<u>23,798</u>	<u>9,020</u>	<u>22,145</u>

**DISTRICT ATTORNEY TENTH JUDICIAL DISTRICT**

County	John H. Marsalis —D		Ralph L. Neary —R	
	P. E.	G. E.	P. E.	G. E.
Crowley .....	384	806	592	1,331
Kiowa .....	125	605	298	949
Otero .....	1,484	4,122	1,104	5,505
Pueblo .....	6,794	16,372	3,308	16,136
	<u>8,787</u>	<u>21,905</u>	<u>5,302</u>	<u>23,921</u>

**DISTRICT ATTORNEY ELEVENTH JUDICIAL DISTRICT**

County	Emerson M. Eagleton —R		William S. Rush —D	
	P. E.	G. E.	P. E.	G. E.
Chaffee .....	350	1,656	894	2,361
Custer .....	348	740	162	440
Fremont .....	2,372	5,169	1,702	4,141
Park .....	246	1,105	176	734
	<u>3,316</u>	<u>8,670</u>	<u>2,934</u>	<u>7,676</u>

**DISTRICT ATTORNEY TWELFTH JUDICIAL DISTRICT**

County	George H. Blickhahn —R		Leonard M. Haynie —D	
	P. E.	G. E.	P. E.	G. E.
Alamosa .....	309	2,097	641	2,454
Conejos .....	1,019	2,049	421	2,160
Costilla .....	96	1,211	931	1,484
Mineral .....	54	204	41	292
Rio Grande.....	395	2,656	424	2,383
Saguache .....	175	1,368	238	1,041
	<u>2,048</u>	<u>9,585</u>	<u>2,696</u>	<u>9,814</u>

**DISTRICT ATTORNEY THIRTEENTH JUDICIAL DISTRICT**

County	Thomas E. Munson —D		William B. Paynter —R	
	P. E.	G. E.	P. E.	G. E.
Logan .....	1,346	3,865	1,452	3,787
Morgan .....	1,420	2,606	2,086	4,446
Phillips .....	434	1,198	804	1,184
Sedgwick .....	277	1,061	601	1,317
Washington .....	904	1,523	1,265	2,313
Yuma .....	760	2,152	882	3,129
	<u>5,141</u>	<u>12,405</u>	<u>7,090</u>	<u>16,176</u>

**DISTRICT ATTORNEY FOURTEENTH JUDICIAL DISTRICT**

County	Ray Monson —D		S. E. Pleasant —R	
	P. E.	G. E.	P. E.	G. E.
Grand .....	266	869	403	1,037
Moffat .....	524	927	769	1,705
Routt .....	1,495	3,023	791	1,946
	<u>2,285</u>	<u>4,819</u>	<u>1,963</u>	<u>4,688</u>

**DIRECTORS OF CADDOA RESERVOIR AND ARKANSAS VALLEY BASIN CONSERVANCY AND IMPROVEMENT DISTRICT  
PROWERS COUNTY**

Gordon, Arthur C.—R.....	667
Smartt, Hacket—D.....	442

**MOFFAT TUNNEL COMMISSIONERS  
DIVISION ONE**

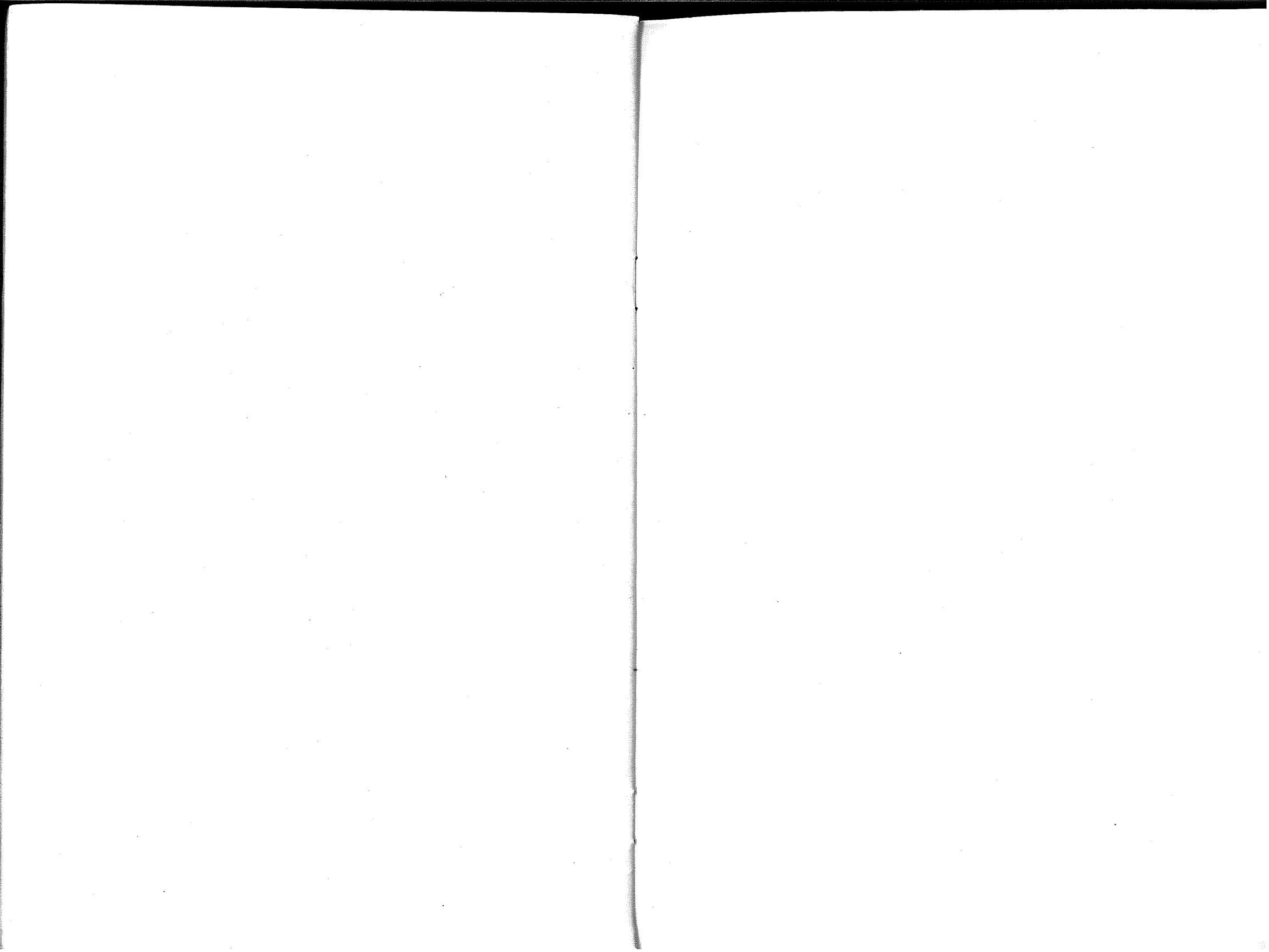
County	Eugene W. Ambrose Real Estate Owners	Rodney J. Bardwell Real Estate Taxpayers	William J. Bennett Property Owners	Elmo Hall Non-Partisan League
	G. E.	G. E.	G. E.	G. E.
Adams .....	56	65	90	22
Boulder .....	19	15	16	8
Denver .....	19,709	25,057	26,727	4,714
Gilpin .....	6	7	8	0
Jefferson .....	473	650	856	106
	<u>20,263</u>	<u>25,794</u>	<u>27,697</u>	<u>4,850</u>

**DIVISION ONE**

County	Samuel M. January Property Taxpayers	Frank Oakes Pioneer M. T.	Thomas G. Vick Roy Real Estate Owners
	G. E.	G. E.	G. E.
Adams .....	52	34	34
Boulder .....	20	11	12
Denver .....	20,299	9,567	14,108
Gilpin .....	5	1	1
Jefferson .....	528	190	241
	<u>20,904</u>	<u>9,803</u>	<u>14,396</u>

**DIVISION TWO**

County	Walter L. Carver Citizens	Thomas S. Iles Tunnel Taxpayers	Charles H. Leckenby Western Slope
	G. E.	G. E.	G. E.
Eagle .....	17	16	17
Grand .....	195	401	407
Moffat .....	677	600	480
Routt .....	715	997	1,089
	<u>1,604</u>	<u>2,014</u>	<u>1,993</u>



COUNTY OFFICERS—STATE

COUNTY	COUNTY SEAT	COUNTY CLERK	COUNTY TREASURER	ASSESSOR	SHERIFF	COUNTY JUDGE	CLERK COUNTY COURT	CLERK COUNTY COURT
1 Adams	Brighton	Arle J. Tripp—D	H. L. Prather—D	E. G. Waymire—D	Herman A. Farney—R	Homer G. Preston—D	Margaret McGuire—D	Howa
2 Alamosa	Alamosa	C. M. Van Fleet—D	Miss E. P. Joyce—D	Olof Bergman—D	Maurice Smith—D	D. W. Kirkpatrick—R	Mrs. Chloe Stubbs—R	Mrs.
3 Arapahoe	Littleton	Earl K. Downing—R	Charles B. Sinclair—R	W. W. Hanson—D	E. E. Monzingo—R	Henry Bruce Teller—D	J. T. Robertson—D	John
4 Archuleta	Pagosa Springs	Frank Conner—R	James Kenney—D	Kenneth D. Hill—D	Earl Crouse—R	J. T. Martinez—R	J. T. Martinez—R	Fred
5 Baca	Springfield	Walter P. Powell—R	Hannah Baker—D	Jack L. Patterson—D	Jared J. Hansen—D	W. R. Randall—D	Mrs. W. R. Randall—D	Henr.
6 Bent	Las Animas	Mrs. Myrtle V. Johnson—D	R. W. Esgar—R	C. N. Troup—R	L. C. Coffelt—D	Herman A. Bailey—D	Herman A. Bailey—D	Wm.
7 Boulder	Boulder	Ed Adams—D	H. A. Lennartz—D	Aylwin A. Smith—R	George A. Richart—R	William E. Buck—R	Lynn R. McIntosh—R	C. W.
8 Chaffee	Salida	A. W. Samson—R	Chas. C. White—D	Wm. A. Aby—R	H. J. Swain—R	W. S. Buchanan—D	Arthur E. Smith—R	Arth.
9 Cheyenne	Cheyenne Wells	Thos. H. McKown—D	Lee Ross—R	Edward J. Hogan—D	Fred B. Fletcher—R	R. A. Martinson—R	Miss Mattie Trimble—R	H. C.
10 Clear Creek	Georgetown	Kenneth E. Moscript—R	Robert W. Harvey—R	Edmund Rowse—R	William J. Harvey—R	George D. Criley—D	George D. Criley—D	John
11 Conejos	Conejos	J. A. Rivera—R	J. G. Lopez—R	Adolph Gallegos—D	Lafayette Cantu—D	J. Fidel Chavez—D	Mary Galvez—D	F. L.
12 Costilla	San Luis	Abel Trujillo—D	Joe M. Espinoza—D	Frank Espinoza—D	Fred Espinoza—R	J. O. Valdez—D	Miss Linda M. Galavan—D	Frank
13 Crowley	Ordway	H. M. Greene—R	Philo G. Strever—R	Edward P. Johnson—R	Henry Adam—D	E. M. Stroud—D	Edward L. Mott—R	Denn
14 Custer	Westcliffe	Lewis L. Abbott—D	Clarence J. Dolan—D	Mel Kastendieck—R	James H. Isabell—R	August N. Menzel—R	Arthur A. Clements—R	Edwa
15 Delta	Delta	O. A. Ehrigott—R	Clement A. Bowie—R	J. B. Drake—D	Ray R. Lockhart—R	Arthur A. Clements—R	Arthur A. Clements—R	Gus
16 Denver	Denver	George F. Rock—R	F. E. Wilson—R	F. E. Wilson—R	Wm. E. Guthner—R	C. E. Kettering—R	John L. Griffith—R	F. W.
17 Dolores	Rico	Miss Kathleene Blackham—R	H. G. Keown—D	E. E. Ballenger—D	Fred Young—R	George E. Hicks—D	George E. Hicks—D	O. P.
18 Douglas	Castle Rock	Chas. Prescott—D	Robert T. Jones—D	Carroll Hier—D	S. H. Buckner—R	Edgar S. Triplett—R	Edgar S. Triplett—R	Char
19 Eagle	Eagle	Mrs. Mae Cox—R	Forrest W. Cave—D	George W. Watson—D	W. M. Wilson—R	Mrs. Mabel A. Ethel—D	Mrs. Mabel A. Ethel—D	Chap
20 Elbert	Kiowa	Mrs. Delpha S. Moreland—D	C. W. Elsner—R	Orley Crouch—R	G. R. Brown—R	F. D. Hart—R	F. D. Hart—R	Harr
21 El Paso	Colorado Springs	Charles Ozias—D	O. W. Ward—D	A. W. Sparkman—R	Samuel J. Deal—D	Irvin E. Jones—D	Harry A. Thompson—D	Miss
22 Fremont	Canon City	Katherine Komfala—D	Thos. M. Warner—D	J. W. Haymaker—R	Foster Ranson—R	Joseph D. Blunt—R	Florence Gerlach—R	Jonat
23 Garfield	Glenwood Springs	Walter J. Frost—D	C. H. Durant—R	Bert Brenton—R	Roy Terrell—R	William A. Mason—R	William A. Mason—R	N. D.
24 Gilpin	Central City	A. C. Thomas—D	Hugh L. Lawry—R	William O. Ziege—D	Oscar Williams—R	James M. Seright—D	James M. Seright—D	J. W.
25 Grand	Hot Sulphur Springs	R. O. Throckmorton—R	Charles W. Bloom—D	Victor C. Huffaker—D	Mark E. Fletcher—D	J. N. Pettingell—R	J. N. Pettingell—R	Brice
26 Gunnison	Gunnison	Sam C. Hartman—R	M. J. Fisher—D	Kenneth G. Mark—R	H. G. Lashbrook—R	Clyde Welch—D	John Saunders—D	Mrs.
27 Hinsdale	Lake City	Mrs. Mabel B. Rawson—R	Mrs. Pearl McCloughan—R	W. E. Vernon—D	Hugh Coburn—D	John R. Liska—D	Betty R. Liska—D	H. G.
28 Huerfano	Walsenburg	Damacio Vigil—D	Edward Slates—D	J. Frank Cordova—D	Claud Swift—D	Joseph A. Barron—D	Aloysius Sanchez—D	Char
29 Jackson	Walden	Mrs. L. F. Mitchell—D	Miss Florence A. Wilkins—D	John E. Stephens—D	John D. Bulis—R	J. A. McNamara—D	J. A. McNamara—D	A. G.
30 Jefferson	Golden	W. T. Marsh—R	Sam'l Bolitho—R	Arthur J. Apel—R	Willis Morris—R	Osmer E. Smith—R	A. T. Maserang—R	Char
31 Kiowa	Eads	Art Bradbury—R	Wm. E. Rose—R	Edwin Immer—R	C. A. Wood—D	George B. Black—R	George B. Black—R	Reub
32 Kit Carson	Burlington	Mrs. Pearl Klockenteger—R	L. M. Bushart—R	Robert L. Wilkinson—R	R. W. Plummer—R	E. M. Short—R	E. M. Short—R	Mrs.
33 Lake	Leadville	John Gregory—D	Frank E. Kendrick—D	John J. Bohon—D	Angelo Travison—D	Charles H. Schlaepfer—R	Charles H. Schlaepfer—R	Marg
34 La Plata	Durango	Mrs. Edith C. Kiel—R	Thomas Mason—R	Herbert McGregor—D	R. Bruce Sullivan—R	W. Bruce Jacobson—R	Julia J. Hamilton—R	W. F.
35 Larimer	Fort Collins	Stanley A. Curtis—R	C. S. Ickes—R	W. Ed Wright—R	Ted Schaffer—R	Harry H. Hartman—R	G. R. Cushing—R	Kenr
36 Las Animas	Trinidad	Edward G. Hower—D	Forrest E. Dunlavy—D	Isaac Sandoval—D	Ray Marty—D	William T. Eckhart—D	Nick Bisulco—D	Mauy
37 Lincoln	Hugo	John Abell—D	Orville C. Meink—R	Guy W. Hicks—R	Merlin H. Koerner—R	C. M. Somerville—D	Mrs. Jewell Nell Mohan—D	R. J.
38 Logan	Sterling	Harley Beery—D	W. F. Alexander—D	J. Howard Berkstresser—R	Ray R. Powell—D	Roy T. Johnson—R	Marguerite Griffith—R	Josep
39 Mesa	Grand Junction	C. B. Pond—R	Burrell C. Reynolds—D	R. T. Ellington—D	Charles S. Lumley—R	Adair J. Hotchkiss—D	Miss Gladys Moss—D	Mrs.
40 Mineral	Creede	E. T. Barnhart—D	Wm. T. Jackson—R	John J. Weaver—D	E. J. Dabney—D	Willard I. Caton—R	Willard I. Caton—R	Wm.
41 Moffat	Craig	E. D. Davis—D	Russell H. Coles—R	W. O. Miner—D	George Krieger—R	J. W. Self—R	J. W. Self—R	Ralp
42 Montezuma	Cortez	Henry Thorpe—D	Claude H. Wilson—D	J. C. Rumburg—R	Ray Smith—D	C. R. Hickman—D	Mrs. Katie Brumley—R	C. R.
43 Montrose	Montrose	Ira C. Foster—R	Frank E. Spencer—R	W. G. Haney—D	Frank L. Hovey—D	Earl J. Herman—D	Mrs. Mildred Johnson—D	Clide
44 Morgan	Fort Morgan	Loyal C. Baker—R	Edw. H. Madison—R	Lewis E. Wilson—R	Rufus A. Johnston—D	A. W. Dulweber—D	Mary Terriere—D	Hugh
45 Otero	La Junta	Frank Hamer—D	Edw. T. Oberling—R	Art W. Black—R	John H. Armstrong—D	Earl W. Haskins—R	Miss Leah M. Ryder—R	Ruth
46 Ouray	Ouray	Mrs. Eva K. Moule—R	Harry E. Stark—D	Patricio Stealey—D	Jess M. Wood—D	Edward Jelsma—D	Edward Jelsma—D	Marg
47 Park	Fairplay	H. C. Moyer—R	Glen A. Young—D	James T. Witcher—D	S. H. Law—R	Clarence S. Bullock—R	Clarence S. Bullock—R	Mrs.
48 Phillips	Holyoke	Mrs. Emma S. Kramer—D	Ray E. Crosby—R	B. A. Stephenson—R	H. M. Clements—R	Leon Kepler—R	Leon Kepler—R	Geor
49 Pitkin	Aspen	M. M. Neihardt—R	Robert S. Killey—D	Chas. D. Hart—R	Frank Bruin—D	Wm. R. Shaw—R	Miss Louise M. Berg—R	Fran
50 Prowers	Lamar	W. S. Morris—R	Delmas M. Martin—D	W. C. Wilson—D	W. C. McGuin—R	E. R. Jones—R	E. R. Jones—R	Miss
51 Pueblo	Pueblo	A. G. Koehenberger—D	J. E. Creel—D	Sam P. McCoun—D	Lewis Worker—R	Hubert Glover—D	Ray L. Hayes—D	J. R.
52 Rio Blanco	Meeker	J. W. C. Shepherd—D	Geo. E. Aicher—D	F. W. Hossack—R	Chester I. Mead—R	John E. Wix—R	John E. Wix—R	Robe
53 Rio Grande	Del Norte	Ira H. Mitchener—D	Mrs. Norma Z. Statton—R	E. E. Goodding—D	Clyde D. Phillips—D	Manlius T. Hancock—D	Lee A. Ruark—D	Anto
54 Routt	Steamboat Springs	John D. Crawford—D	Thomas W. Poulson—D	Eugene Steele—D	Fred Foster—R	John W. Cole—D	John W. Cole—D	M. M.
55 Saguache	Saguache	W. E. Whitten—R	W. L. Hammond—D	Clifford Burnham—R	Ed Paul—R	Birt Clare—D	Birt Clare—D	Fay
56 San Juan	Silverton	Mrs. Helen A. Thompson—R	Mrs. Ida L. Grimes—R	Norman F. Bowden—D	Fred Patterson—D	Wm. Palmquist—D	Wm. Palmquist—D	Joe
57 San Miguel	Telluride	Mrs. Wilma L. Piele—D	Harold C. Ballard—R	Everett Vernon—D	L. G. Warrick—R	H. E. Dill—D	H. E. Dill—D	Miss
58 Sedgwick	Julesburg	Foster Parker—D	Frank L. Alexander—R	L. J. Bennett—R	Glenn Goddard—R	B. D. Parker, Jr.—R	Mrs. Mabel Cavender—R	Mrs.
59 Summit	Breckenridge	Hugh E. Smith—R	Frank F. Brown—R	Edward T. Stuard—D	C. P. Enyeart—R	M. J. Waltz—R	M. J. Waltz—R	Meli
60 Teller	Cripple Creek	Mrs. Mamie Wells—D	M. W. Kessey—D	Miss Blanche A. Cassady—D	Cecil A. Markley—D	John H. White—R	John H. White—R	Mrs.
61 Washington	Akron	H. G. Potter—R	Delman A. Yackle—R	H. H. Holt—R	S. B. Lewis—R	James G. Holsclaw—R	Mrs. Blanche D. Avery—R	Mrs.
62 Weld	Greeley	Louis Spomer—R	Harvey E. Witwer—R	C. M. Whiteside—R	Gus G. Anderson—R	Benj. A. Woodcock—D	Ross Shaklee—D	Albe
63 Yuma	Wray	Ray F. Morgan—D	Robert L. Sheverbush—D	B. H. Yount—D	Raymond Van Horn—D	Buffer Roberts—R	Buffer Roberts—R	Esth

COUNTY OFFICERS—STATE OF COLORADO

JUDGE	CLERK COUNTY COURT	CLERK DISTRICT COURT	SURVEYOR	SUPT. OF SCHOOLS	CORONER	COUNTY COMMISSIONERS			
on—D	Margaret McGuire—D	Howard H. Griffin—D	G. T. Mullings—D	Grace S. Miller—D	A. T. Allen—R	Geo. S. Kemp—R	Frank Larson—R	Harry C. Flanders—R	1
ick—R	Mrs. Chloe Stubbs—R	Mrs. Alice E. Burnham—R	Mrs. Mary H. Peterson—R	Mabel McL. O'Laughlin—D	John Allardice—D	Shrive B. Collins—D	John A. Meehan—D	R. C. Mullings—D	2
iller—D	J. T. Robertson—D	John M. Haynes—D	John W. Black—R	Mrs. Lena Archuleta—R	Jay M. Hatfield—R	Hugh W. Graham, Jr.—R	C. D. Courtright—D	Wm. C. Giggall—R	3
—R	J. T. Martinez—R	Fred Catchpole—D	T. B. Nossaman—D	Joe B. Perkins—D	Dr. J. G. McKinley—R	Dailey Hoti—D	John R. Stevens—D	Harmon T. Clark—D	4
—D	Mrs. W. R. Randall—D	Henry O. Green—D	D. E. Heizer—R	Hazel L. Martin—R	Dr. G. A. Duffy—R	C. L. Bosley—D	W. A. Hamilton—R	J. C. Lent—R	5
ley—D	Herman A. Bailey—D	Wm. A. Bush—D	J. E. Byron—R	Chas. E. Davis—R	Geo. W. Powell—R	O. L. Robinson—R	C. E. Everhart—R	M. L. Earl—R	6
k—R	Lynn R. McIntosh—R	C. W. Atkinson—R	E. Carter Hutchinson	Bessie M. Shewalter—D	Geo. W. Howe—R	Elmer Hetzer—D	Joe Carlson—R	Elmer Autrey—R	7
n—D	Arthur E. Smith—R	Arthur E. Smith—R	D. H. Zack—R	Mrs. Jeanette Baughman—R	J. E. Stewart—D	Ben Behrman—D	John Mundlein—D	T. E. O'Haver—R	8
on—R	Miss Mattie Trimble—R	H. C. Nelson—R	Chas. L. Harrington—D	Vida Seaton Cannady—R	Emil K. Keyser—R	Elmer Pearson—R	Fred Hadley—R	C. F. Kibbee—R	9
y—D	George D. Criley—D	John W. Old—D	A. H. Martin—D	Gaspar Garcia—R	Dr. Freeman D. Fowler—R	Wm. F. Buckley—D	George H. Curnow—R	Tony Anderson—D	10
—D	Mary Galvez—D	J. L. Mott—R	J. L. Tucker—R	Belinda S. Carpenter—R	Earl Haynie—D	Severiano Ortiz—R	W. Fred Haynie—D	Juan I. Medina—R	11
—D	Miss Linda M. Galavan—D	Frank Mondragon—R	A. B. Hunsicker—R	N. E. Nordby—R	Dr. R. C. Diaz—R	Joe Aragon—D	Felix Garcia—R	W. S. Parrish, Sr.—D	12
zents—R	Edward L. Mott—R	Dennis J. Mooney—D	A. K. Vickery—R	Mrs. Georgianna Kettle—R	J. E. Jeffery—R	B. H. Schwab—R	B. Q. Norris—R	E. G. Clatworthy—R	13
—D	Arthur A. Clements—R	Edward L. Mott—R	Percy R. Krantz—R	Miss Martha Savage—D	Charles A. Menzel—R	H. E. Schwab—R	Clyde Sheffield—R	Ray O. Adams—R	14
—D	John L. Griffith—R	Gus Schlapp—D	Henry H. Curtis—R	Angela G. Herstrom—R	A. R. McCormick—R	H. S. Wood—R	Ed H. Crawford—D	W. F. Blaine—R	15
ett—D	George E. Hicks—D	F. W. Sanborn	William H. Lea—D	Miss M. Anna Engel—R	Cahl Ph. Schwab	Harold N. Webster	George E. Cramner	R. E. Wilson	16
Ethel—D	Edgar S. Triplett—R	O. P. Weston—D	Forrest L. Head—R	Grace L. Lamb—R	C. M. Engel—R	Edward Bear—D	Roy West—R	Wade A. Redford—D	17
—D	Mrs. Mabel A. Ethel—D	Charles S. Merrill—R	R. M. Cannon—R	Miss Kathleen O'Rourke—D	C. Douglas Andrews—D	C. H. Lowell—R	Frank Dakan—R	H. H. Bean—R	18
—D	P. D. Hart—R	Harry Anderson—R	J. Q. McNatt—R	H. H. Hadley—D	Paul Andre—R	H. A. Nottingham—D	Wayne T. Jones—R	Alfred M. Sloss—D	19
—D	Harry A. Thompson—D	Miss Lois A. Brenner—D	George M. Heinsen—D	Joseph W. Stoner—R	Dale O. Groves—R	Dewey Carnahan—D	E. F. Ager—R	R. W. Lambert—R	20
ason—R	Florence Gerlach—R	Jonathan Seaman—R	W. E. Scott, Jr.—D	Alma M. Harris—D	Lawrence O. Haney—D	Emmett R. Knight—D	Chas. N. Ellis—R	J. Z. McCullough—D	21
ght—D	William A. Mason—R	N. D. Smith—R	Frank I. Huntington—R	Mrs. Elizabeth Parfet—R	Dr. W. T. Little—R	William R. Griffiths—R	Frank Zavislan—D	Finis Parks—R	22
l—R	James M. Seright—R	J. W. Leidinger—D	F. R. LaPlante—R	Mrs. Adele McDowell—D	D. H. Montgomery—R	Kenneth A. Baillie—R	George McLaughlin—D	Sig. Olsen—R	23
—D	J. N. Pettingell—R	Brice Sheriff—D	B. N. Ramsey—D	Mrs. Emma Hards—R	D. I. Cox—R	A. M. Fairchild—D	Harry A. Smith—R	W. T. Sterling—R	24
—D	Betty Saunders—D	Mrs. Bessie Wolfe—R	James H. P. Fisk—R	H. G. Heath—D	Alex Campbell—D	Amos W. Horn—R	George McLaughlin—D	George H. Dean—R	25
on—D	John R. Liska—D	H. G. Heath—D	Frank DeLynden—D	Frances Nelson—D	A. P. Griffiths—D	B. H. Jorgensen—D	James E. Quinn—D	W. H. Whalen—D	26
a—D	Aloysius Sanchez—D	Charles Haines—D	David H. M. Strong—R	Miss Hazel Turner—D	Dan Unfug—R	Ivan O. Vickers—D	H. L. Corder—D	Jas. Davies, Jr.—D	27
h—R	J. A. McNamara—D	A. G. Maine—R	O. A. Olson—R	Marguerite Juchem—R	Dr. C. M. Morgan—R	Sabino Archuleta—D	E. M. Bowers—D	Ben Pascoe—D	28
k—R	A. T. Maserang—R	Charles Pike—D	Fred J. McNair—D	H. B. Amyx—D	O. A. Saunders—R	William Simpson—R	John A. Peterson—R	John A. Peterson—R	29
—R	George B. Black—R	Reuben B. Rittgers—D	Lucy E. Cramer—R	Mrs. Virginia E. Felch—R	Harold Barnes—D	James G. Biggins, Jr.—R	Geo. S. Green—R	Geo. Deviny—R	30
—R	E. M. Short—R	Mrs. Mabel Boger—R	Korleen Davies Mason—D	Lucy E. Cramer—R	Dr. M. E. Robinson—R	E. T. Hawthorne—R	P. L. Reed—R	G. M. Baxter—R	31
—R	Charles H. Schlaepfer—R	Margaret A. Schraeder—R	Sidney W. Cooper—R	Wm. E. Cramer—R	James J. Corbett—D	Harley Rhoades—R	Tom Kennedy—R	Charles W. Pierce—D	32
—R	Julia J. Hamilton—R	W. E. Buchanan—D	Frank Ciocchetto—D	Korleen Davies Mason—D	Irwin Maxwell	George F. Burke—D	Charles W. Sundquist—R	Peter Scott—R	33
—R	G. R. Cushing—R	Kenneth A. Johnson—D	James W. Pershing—R	William H. Haxby—D	Kendall Hammond—R	D. W. Sexton—R	John G. Nesbit—R	John G. Nesbit—R	34
—R	Nick Bisulco—D	Maupin Woodson—D	J. E. Youngquist—R	Eddy Webb—R	Edward Toupal—D	Ernest A. Fischer—R	Harry Pople—R	Harry Pople—R	35
ie—D	Mrs. Jewell Nail Mohan—D	R. J. Barngrover	Roy L. George—D	Miss Faith Taylor—R	Velman Seal—R	Arthur Winter—R	Oscar V. Hillenkamp—D	Oscar V. Hillenkamp—D	36
n—R	Marguerite Griffith—R	Joseph A. Davis—R	Don C. LaFont—D	Mrs. Sadie E. Hogsett—D	A. D. Jackson—R	T. H. McCallum—R	T. J. Crichton—R	T. J. Crichton—R	37
kiss—D	Miss Gladys Moss—D	Mrs. Lucy E. Hogan—D	Herman Fegert—D	Lucien Freedle—R	T. W. Gardner—R	T. E. Brezeley—R	Oscar C. Mayne—D	Oscar C. Mayne—D	38
n—R	Willard I. Caton—R	Wm. T. Jackson—R	Davis C. Hickman	Viola Rudd—D	C. Stanley Parker—R	H. Grady Puett—D	W. Wallace Wright—D	W. Wallace Wright—D	39
—D	J. W. Self—R	Ralph L. White—D	J. E. McDaniel—R	Mrs. Lotta W. Manauagh—R	I. J. Robacker—D	B. C. Hosselkus—D	Van A. James—R	Van A. James—R	40
—D	Mrs. Katie Brumley—R	C. R. Hickman—D	N. M. MacNeill—D	Mrs. Helen W. Brown—D	J. W. Ertel—R	Waller Barnes—D	Ira Kelly—R	Ira Kelly—R	41
—D	Mrs. Mildred Johnson—D	Clide N. McClean—R	Vincent Guthrie—D	Rose B. Glassey—D	Isaiah Knott—D	Harry Rogers—R	Neis Jacobson—R	Neis Jacobson—R	42
—D	Mary Terriere—D	Hugh R. Smith—R	Franklin Shafer—D	William H. Hogsett—R	E. H. Robinson—R	Clyde Porter—D	W. J. Murchy—R	W. J. Murchy—R	43
—D	Miss Leah M. Ryder—R	Ruth W. Wallis—D	Gerald F. Galloway—R	Cora A. Orendorf—R	Carl M. Ustick—R	Scott Crook—R	Albert D. Miller—R	Albert D. Miller—R	44
—D	Edward Jelsma—D	Marguerite MacLennan—R	Glenn A. White—D	Miss Lois M. Morey—R	Leo Flor—D	E. A. McGlothlin—R	G. U. Brown—D	G. U. Brown—D	45
—D	Clarence S. Bullock—R	Mrs. Ethel J. Willmarth—R	Frank Willoughby	Gladys Hofmeister—R	Dr. John A. Pollice—R	Wm. McCullough—D	Claude L. Logue—R	Claude L. Logue—R	46
—D	Leon Kepler—R	George A. Barker—R	Oscar Hellbeck—R	Mrs. Lettie Lee Brand—D	H. B. Radford—D	D. F. Sagehorn—R	Arthur Falk—R	Arthur Falk—R	47
—D	Miss Louise M. Berg	Frances Willoughby—R	J. R. Botleman—D	Mrs. Bernice Wilmoth—R	T. J. Sardy—D	George W. Smith—D	Orest A. Gerbaz—D	Orest A. Gerbaz—D	48
—D	E. R. Jones—R	Miss Madge L. Creaghe—D	Robert D. White—R	Mrs. Nettie S. Freed—R	Dr. C. T. Knuckey—R	William N. Wilson—R	W. H. Straney—R	W. H. Straney—R	49
—D	Ray L. Hayes—D	J. R. Botleman—D	Antonio J. N. Valdez—R	Mrs. Josephine Holland—D	Dr. C. N. Caldwell—D	J. W. Goss—D	Pete Hughes—D	Pete Hughes—D	50
—D	John E. Wix—R	Robert D. White—R	M. M. Burch—D	Mrs. Ruth M. Mathias—R	Mrs. Edna Colescott—D	Thomas Franks—R	James Coordes—D	James Coordes—D	51
—D	Lee A. Ruark—D	Antonio J. N. Valdez—R	Fay Fennell—R	Stanley Dismuke—D	Mrs. Myrtle C. Woods—R	George F. Millikin—D	Ralph Off—R	Ralph Off—R	52
—D	John W. Cole—D	M. M. Burch—D	Joe Dresback—D	Adrian Proffitt	A. W. Heyer—D	Claude A. Luekens—D	Joseph F. Long—D	Joseph F. Long—D	53
—D	Birt Clare—D	Fay Fennell—R	Miss Alice N. Lindgren—D	Julian Lee Hayes—R	Howard Burress—R	George H. Curtis—R	W. E. Gardner—D	W. E. Gardner—D	54
—D	Wm. Palmquist—D	Joe Dresback—D	Mrs. Etta M. Gibson—R	John Foster—D	Wm. E. Maguire—D	C. W. Fleming—R	John Glanville—R	John Glanville—R	55
—D	H. E. Dill—D	Miss Alice N. Lindgren—D	Melissa H. Hayden—R	Chas. M. Slusser—R	Dr. J. J. Parker—D	W. I. Wilson—D	Wm. Finnegan—D	Wm. Finnegan—D	56
—D	Mrs. Mabel Cavender—R	Mrs. Etta M. Gibson—R	Mrs. K. C. Gustin	Edward A. Carlson, Jr.—R	Dr. F. J. Hilderman—R	G. H. Austin—D	Martin C. Sorensen—D	Martin C. Sorensen—D	57
—D	M. J. Waltz—R	Melissa H. Hayden—R	Mrs. Minnie Blausner—R	Malcolm E. Burns—D	L. C. Owens—D	N. C. Miller—D	Earl W. Rice—D	Earl W. Rice—D	58
—D	John H. White—R	Mrs. K. C. Gustin	Albert Luther—R	Mrs. Rose E. H. Allen—R	A. C. Denman—D	Alf Coulson—R	Jim Wild—D	Jim Wild—D	59
—D	Mrs. Blanche D. Avery—R	Mrs. Minnie Blausner—R	Esther Cassin—R	L. L. Stimson—R	Harvey Benjamin—R	V. E. Beck—R	Otto Muchow—R	Otto Muchow—R	60
—D	Ross Shaklee—D	Albert Luther—R	W. B. Coston—D	Wm. S. Hunt—D	T. C. Wilmoth—D	Fred Ford—D	Harley Warren—R	Harley Warren—R	61
—D	Buffer Roberts—R	Esther Cassin—R		Marian Cramer—D	Paul Morris—R	W. A. Thompson—R	Frank D. Catchpole—R	Frank D. Catchpole—R	62
								Henry D. Witte—R	63

