

**STATE OF COLORADO
ABSTRACT OF VOTES CAST
1988**

**PRIMARY ELECTION
August 9, 1988**

**GENERAL ELECTION
November 8, 1988**



Published by
NATALIE MEYER
Secretary of State

DISTRICT ATTORNEY-FOURTH JUDICIAL DISTRICT

IUPPA, BARNEY
SUTHERS, JOHN

	# REG	# VOTE	D		TOTAL	NO VOTE	%	NO VT	ZTRNOUT
			1	2					
EL PASO	213,647	145,988	63,605	74,697	138,302	7,686	5.2	68.8	
TELLER	7,177	5,670	2,290	3,067	5,357	313	5.5	79.0	
TOTAL	220,824	151,658	65,895	77,764	143,659	7,999	5.2	68.6	

DISTRICT ATTORNEY-FIFTH JUDICIAL DISTRICT

BUTLER, FRED
MICHAELSON, PETE

	# REG	# VOTE	R		TOTAL	NO VOTE	%	NO VT	ZTRNOUT
			1	2					
CLEAR CREEK	5,244	3,800	1,419	1,947	3,366	434	11.4	72.4	
EAGLE	12,880	8,166	3,209	3,998	7,207	959	11.7	63.4	
LAKE	3,345	2,651	689	1,390	2,079	572	21.5	79.2	
SUMMIT	8,876	5,809	1,635	3,654	5,289	520	8.9	65.4	
TOTAL	30,345	20,426	6,952	10,989	17,941	2,485	12.1	67.3	

DISTRICT ATTORNEY-SIXTH JUDICIAL DISTRICT

REICHMAN, VIC

	# REG	# VOTE	D		TOTAL	NO VOTE	%	NO VT	ZTRNOUT
			1	2					
ARCHULETA	3,413	2,426	1,422	1,422	1,004	41.3	71.0		
LA PLATA	20,405	14,043	10,169	10,169	3,874	27.5	68.8		
SAN JUAN	604	442	314	314	128	28.9	73.1		
TOTAL	24,422	16,911	11,905	11,905	5,006	29.6	69.2		

Abstract of Votes Cast at the **GENERAL** election held on November, 8, 1988

DISTRICT ATTORNEY-SEVENTH JUDICIAL DISTRICT

MITCHEL, JOHN J.
STERN, MICHAEL C.

R 1
D 2

	# REG	# VOTE	1	2	TOTAL	NO VOTE	%	NO VT	XTRNOUT
DELTA	13,046	9,869	4,671	4,489	9,160	709	7.1	75.6	
GUNNISON	7,147	4,663	1,133	3,015	4,148	515	11.0	65.2	
HINSDALE	563	428	139	257	396	32	7.4	76.0	
MONTROSE	14,041	10,661	4,575	5,407	9,982	679	6.3	75.9	
DURAY	1,684	1,320	689	536	1,225	95	7.1	78.3	
SAN MIGUEL	2,710	1,934	547	1,104	1,651	283	14.6	71.3	
TOTAL	39,191	28,875	11,754	14,808	26,562	2,313	8.0	73.6	

DISTRICT ATTORNEY-EIGHTH JUDICIAL DISTRICT

VANNEVEREN, STU

R 1

	# REG	# VOTE	1	TOTAL	NO VOTE	%	NO VT	XTRNOUT
JACKSON	1,194	931	566	566	365	39.2	77.9	
LARIMER	115,541	85,787	66,266	66,266	19,521	22.7	74.2	
TOTAL	116,735	86,718	66,832	66,832	19,886	22.9	74.2	

DISTRICT ATTORNEY-NINTH JUDICIAL DISTRICT

BLAKEY, WILTON K.

	# REG	# VOTE	1	TOTAL	NO VOTE %	NO VT	XTRNOUT
GARFIELD	15,553	11,692	7,754	7,754	3,938	33.6	75.1
PITKIN	10,217	6,592	3,920	3,920	2,672	40.5	64.5
RIO BLANCO	4,100	2,746	1,840	1,840	906	32.9	66.9
TOTAL	29,870	21,030	13,514	13,514	7,516	35.7	70.4

DISTRICT ATTORNEY-TENTH JUDICIAL DISTRICT

SANDSTROM, G.F. "GUS"

	# REG	# VOTE	1	TOTAL	NO VOTE %	NO VT	XTRNOUT
PUEBLO	76,973	57,087	45,615	45,615	11,472	20.0	74.1
TOTAL	76,973	57,087	45,615	45,615	11,472	20.0	74.1

DISTRICT ATTORNEY-ELEVENTH JUDICIAL DISTRICT

LARSEN, ROGER B.

	# REG	# VOTE	1	TOTAL	NO VOTE %	NO VT	XTRNOUT
CHAFFEE	7,844	5,806	964	964	4,842	83.3	74.0
CUSTER	1,682	1,234	357	357	877	71.0	73.3
FREMONT	20,467	14,256	1,837	1,837	12,419	87.1	69.6
PARK	5,079	3,494	1,327	1,327	2,167	62.0	68.7
TOTAL	35,072	24,790	4,485	4,485	20,305	81.9	70.6

Abstract of Votes Cast at the **GENERAL** election held on November, 8, 1988**DISTRICT ATTORNEY-TWELFTH JUDICIAL DISTRICT**MRZLAK, JAMES W. (JIM)
PRIMAVERA, DOUGLASS F.R 1
D 2

	# REG	# VOTE	1	2	TOTAL	NO VOTE	%	NO VT	ZTRNOUT
ALAMOSA	6,960	5,112	1,984	2,840	4,824	288	5.6	73.4	
CONEJOS	4,672	3,714	1,449	2,072	3,521	193	5.1	79.4	
COSTILLA	2,532	1,787	565	937	1,502	285	15.9	70.5	
MINERAL	666	416	217	170	387	29	6.9	62.4	
RIO GRANDE	5,875	4,605	2,392	1,901	4,293	312	6.7	78.3	
SAGUACHE	2,834	2,119	1,119	823	1,942	177	8.3	74.7	
TOTAL	28,539	17,753	7,726	8,743	16,469	1,284	7.2	75.4	

DISTRICT ATTORNEY-THIRTEENTH JUDICIAL DISTRICTBAILEY, JON M.
JOHNS, DOYLE T. JR.D 1
R 2

	# REG	# VOTE	1	2	TOTAL	NO VOTE	%	NO VT	ZTRNOUT
KIT CARSON	4,827	3,684	2,286	988	3,269	415	11.2	76.3	
LOGAN	11,628	8,472	5,734	2,200	7,934	538	6.3	72.8	
MORGAN	13,456	8,993	5,633	2,399	8,032	961	10.6	66.8	
PHILLIPS	3,029	2,373	1,760	459	2,219	154	6.4	78.3	
SEDGWICK	1,986	1,611	1,202	297	1,499	112	6.9	81.1	
WASHINGTON	3,531	2,818	1,904	752	2,656	162	5.7	79.8	
YUMA	6,188	4,647	3,205	1,163	4,368	279	6.0	75.0	
TOTAL	44,645	32,598	21,724	8,253	29,977	2,621	8.0	73.0	

DISTRICT ATTORNEY-FOURTEENTH JUDICIAL DISTRICT

LONG, GREGORY F.

R 1

	# REG	# VOTE	1	TOTAL	NO VOTE	%	NO VT	ZTRNOUT
GRAND	5,981	3,963	3,034	3,034	929	23.4	66.2	
MOFFAT	7,103	4,677	2,611	2,611	2,066	44.1	65.8	
ROUTT	10,283	6,516	4,163	4,163	2,353	36.1	63.3	
TOTAL	23,367	15,156	9,808	9,808	5,348	35.2	64.8	

DISTRICT ATTORNEY-FIFTEENTH JUDICIAL DISTRICT

BIENVENU, PHILIP

D 1

	# REG	# VOTE	1	TOTAL	NO VOTE	%	NO VT	ZTRNOUT
BACA	3,161	2,658	1,475	1,475	1,183	44.5	84.0	
CHEYENNE	1,589	1,231	601	601	630	51.1	77.4	
KIOWA	1,392	1,101	647	647	454	41.2	79.0	
PROWERS	8,026	5,489	2,434	2,434	3,055	55.6	69.3	
TOTAL	14,168	10,479	5,157	5,157	5,322	50.7	73.9	

DISTRICT ATTORNEY-SIXTEENTH JUDICIAL DISTRICT

STORK, GARY R.

D 1

	# REG	# VOTE	1	TOTAL	NO VOTE	%	NO VT	ZTRNOUT
BENT	3,022	2,209	1,474	1,474	735	33.2	73.0	
CROWLEY	2,005	1,580	1,119	1,119	461	29.1	78.8	
OTERO	12,174	8,569	4,599	4,599	3,970	46.3	70.3	
TOTAL	17,201	12,358	7,192	7,192	5,166	41.8	71.8	

Abstract of Votes Cast at the **GENERAL** election held on November, 8, 1988**DISTRICT ATTORNEY-SEVENTEENTH JUDICIAL DISTRICT**

SMITH, JAMES F.	# REG	# VOTE	D		1		% NO VT	XTRNOUT
			1	TOTAL	NO VOTE			
ADAMS	141,985	98,575	73,376	73,376	25,199		25.5	69.4
TOTAL	141,985	98,575	73,376	73,376	25,199		25.5	69.4

DISTRICT ATTORNEY-EIGHTEENTH JUDICIAL DISTRICT

GALLAGHER, ROBERT R., JR.	# REG	# VOTE	R		1		% NO VT	XTRNOUT
			1	TOTAL	NO VOTE			
ARAPAHOE	239,659	164,420	114,670	114,670	49,750		30.2	68.8
DOUGLAS	35,698	25,576	19,812	19,812	5,764		22.5	71.6
ELBERT	6,056	4,590	3,331	3,331	1,259		27.4	75.7
LINCOLN	2,964	2,326	1,642	1,642	684		29.4	78.4
TOTAL	283,376	196,912	139,455	139,455	57,457		29.1	69.4

DISTRICT ATTORNEY-NINETEENTH JUDICIAL DISTRICT

PEEK, STAN DOMINGUEZ, AL	# REG	# VOTE	D		1		% NO VT	XTRNOUT
			1	2	TOTAL	NO VOTE		
WELD	70,336	50,680	23,810	24,096	47,906	2,774	5.4	72.0
TOTAL	70,336	50,680	23,810	24,096	47,906	2,774	5.4	72.0

DISTRICT ATTORNEY-TWENTIETH JUDICIAL DISTRICT

HUNTER, ALEXANDER M.

D 1

	# REG	# VOTE	1	TOTAL	NO VOTE	%	NO VT	ZTRNOUT
BOULDER	157,212	113,809	80,709	80,709	33,100	29.0	72.3	
TOTAL	157,212	113,809	80,709	80,709	33,100	29.0	72.3	

DISTRICT ATTORNEY-TWENTY-FIRST JUDICIAL DISTRICT

ERKENBRACK, STEPHEN K.

R 1

	# REG	# VOTE	1	TOTAL	NO VOTE	%	NO VT	ZTRNOUT
MESA	55,290	38,795	29,110	29,110	9,685	24.9	70.1	
TOTAL	55,290	38,795	29,110	29,110	9,685	24.9	70.1	

DISTRICT ATTORNEY-TWENTY-SECOND JUDICIAL DISTRICT

BUCK, GEORGE
WITTY, PEGGY J.

R 1
D 2

	# REG	# VOTE	1	2	TOTAL	NO VOTE	%	NO VT	ZTRNOUT
DOLORES	1,032	805	435	304	739	66	8.1	78.0	
MONTEZUMA	3,854	7,010	3,712	2,953	6,665	345	4.9	71.1	
TOTAL	10,886	7,815	4,147	3,257	7,404	411	5.2	71.7	

Abstract of Votes Cast at the **GENERAL** election held on November, 8, 1988

OFFICIAL LANGUAGE - YES
OFFICIAL LANGUAGE - NO

1
2

	# REG	# VOTE	1	2	TOTAL	NO VOTE	%	NO VT	XTRNOUT
ADAMS	141,985	98,575	61,360	34,303	95,663	2,912	2.9	69.4	
ALAMOSA	6,950	5,112	2,162	2,676	4,838	274	5.3	73.4	
ARAPAHOE	238,658	164,420	99,335	56,259	155,594	8,826	5.3	68.8	
ARCHULETA	3,413	2,426	1,266	981	2,247	179	7.3	71.0	
BACA	3,161	2,658	1,611	829	2,440	218	8.2	84.0	
BENT	3,022	2,209	1,030	1,033	2,063	146	6.6	73.0	
BOULDER	157,212	113,809	58,418	52,485	110,903	2,906	2.5	72.3	
CHAFFEE	7,844	5,806	3,565	1,663	5,228	578	9.9	74.0	
CHEYENNE	1,589	1,231	840	280	1,120	111	9.0	77.4	
CLEAR CREEK	5,244	3,800	2,296	1,367	3,663	137	3.6	72.4	
CONEJOS	4,672	3,714	1,017	2,250	3,267	447	12.0	79.4	
COSTILLA	2,532	1,787	252	1,258	1,510	277	15.5	70.5	
CROWLEY	2,005	1,580	898	567	1,465	115	7.2	78.8	
CUSTER	1,682	1,234	809	347	1,156	78	6.3	73.3	
DELTA	13,046	9,869	6,701	2,482	9,183	686	6.9	75.6	
DENVER	317,059	214,381	96,269	95,854	192,123	22,258	10.3	67.6	
DOLORES	1,032	805	476	180	656	149	18.5	78.0	
DOUGLAS	35,698	25,576	16,528	7,919	24,447	1,129	4.4	71.6	
EAGLE	12,880	8,166	4,655	3,133	7,788	378	4.6	63.4	
ELBERT	6,056	4,590	3,168	1,242	4,410	180	3.9	75.7	
EL PASO	213,647	145,988	97,161	43,294	140,455	5,533	3.7	68.3	
FREMONT	20,467	14,256	9,570	3,699	13,269	987	6.9	69.6	
GARFIELD	15,553	11,692	7,373	3,745	11,118	574	4.9	75.1	
GILPIN	2,456	1,626	958	579	1,537	89	5.4	66.2	
GRAND	5,981	3,963	2,510	1,306	3,816	147	3.7	66.2	
GUNNISON	7,147	4,663	2,653	1,656	4,309	354	7.5	65.2	
HINSDALE	563	428	265	127	392	36	8.4	76.0	
HUERFANO	4,152	3,157	1,284	1,485	2,769	388	12.2	76.0	
JACKSON	1,194	931	715	165	880	51	5.4	77.9	
JEFFERSON	288,918	204,486	129,428	68,500	197,928	6,558	3.2	70.7	
KIOWA	1,392	1,101	678	346	1,024	77	6.9	79.0	
KIT CARSON	4,827	3,684	2,480	896	3,376	308	8.3	76.3	
LAKE	3,345	2,651	1,421	906	2,327	324	12.2	79.2	
LA PLATA	20,405	14,043	6,118	7,152	13,270	773	5.5	68.8	
LARIMER	115,541	85,787	51,922	31,380	83,302	2,485	2.8	74.2	
LAS ANIMAS	9,027	6,590	2,195	3,102	5,297	1,293	19.6	73.0	

NUMBER 1

SHALL THERE BE AN AMENDMENT
TO THE COLORADO CONSTITUTION
TO DECLARE THAT THE ENGLISH
LANGUAGE IS THE OFFICIAL
LANGUAGE OF THE STATE OF
COLORADO?

YES

NO

LINCOLN	2,964	2,326	1,633	562	2,195	131	5.6	78.4
LOGAN	11,628	8,472	5,712	2,265	7,977	495	5.8	72.8
NESA	55,230	38,795	23,680	13,972	37,652	1,143	2.9	70.1
MINERAL	666	416	271	117	388	28	6.7	62.4
MOFFAT	7,103	4,677	2,969	1,264	4,233	444	9.4	65.8
MONTEZUMA	9,854	7,010	4,295	2,246	6,541	469	6.6	71.1
MONTE ROSE	14,041	10,661	6,542	3,468	10,010	651	6.1	75.9
MORGAN	13,456	8,993	5,735	2,398	8,133	860	9.5	66.8
OTERO	12,174	8,569	4,072	3,332	7,404	1,165	13.5	70.3
OURAY	1,684	1,320	859	377	1,236	84	6.3	78.3
PARK	5,079	3,494	2,217	1,066	3,283	211	6.0	68.7
PHILLIPS	3,029	2,373	1,697	522	2,159	214	9.0	78.3
PITKIN	10,217	6,592	3,761	2,501	6,262	330	5.0	64.5
PROWERS	8,026	5,489	2,732	2,135	4,867	622	11.3	68.3
PUEBLO	76,973	57,087	27,824	26,291	54,115	2,972	5.2	74.1
RIO BLANCO	4,100	2,746	1,816	754	2,570	176	6.4	66.9
RIO GRANDE	5,875	4,605	2,666	2,054	4,320	285	6.1	78.3
ROUTT	10,283	6,516	4,137	1,913	6,050	466	7.1	63.3
SAGUACHE	2,834	2,119	937	997	1,934	185	8.7	74.7
SAN JUAN	604	442	245	167	412	30	6.7	73.1
SAN MIGUEL	2,710	1,934	910	891	1,801	133	6.8	71.3
SEDGWICK	1,986	1,611	1,252	256	1,508	103	6.3	81.1
SUMMIT	8,876	5,809	3,403	2,205	5,608	201	3.4	65.4
TELLER	7,177	5,670	3,832	1,645	5,477	193	3.4	79.0
WASHINGTON	3,531	2,818	2,067	585	2,652	166	5.8	79.8
WELD	70,336	50,680	32,451	16,311	48,762	1,918	3.7	72.0
YUMA	6,188	4,647	2,975	1,313	4,288	359	7.7	75.0
TOTAL	2023704901432665	829,617	527,0531356,670	75,995	5.3	70.3		

Abstract of Votes Cast at the **GENERAL** election held on November, 8, 1988

RECALL REINBURSEMENT -YES
RECALL REINBURSEMENT -NO

1

2

	# REG	# VOTE	1	2	TOTAL	NO VOTE %	NO VT	XTRNOUT
ADAMS	141,985	98,575	43,425	43,547	86,972	11,603	11.7	69.4
ALAMOSA	6,960	5,112	1,793	2,565	4,358	754	14.7	73.4
ARAPAHOE	238,658	164,420	83,017	54,208	137,225	27,195	16.5	68.8
ARCHULETA	3,413	2,426	922	940	1,862	564	23.2	71.0
BACA	3,161	2,658	712	1,322	2,034	624	23.4	84.0
BENT	3,022	2,209	690	1,073	1,763	446	20.1	73.0
BOULDER	157,212	113,809	47,847	49,983	97,830	15,979	14.0	72.3
CHAFFEE	7,844	5,806	2,156	2,600	4,756	1,050	18.0	74.0
CHEYENNE	1,589	1,231	337	577	914	317	25.7	77.4
CLEAR CREEK	5,244	3,800	1,740	1,566	3,306	494	13.0	72.4
CONEJOS	4,672	3,714	780	1,632	2,412	1,302	35.0	79.4
COSTILLA	2,532	1,787	310	884	1,194	593	33.1	70.5
CROWLEY	2,005	1,580	491	798	1,289	291	18.4	78.8
CUSTER	1,682	1,234	520	506	1,026	208	16.8	73.3
DELTA	13,046	9,869	3,902	4,183	8,085	1,784	18.0	75.6
DENVER	317,059	214,381	95,155	69,397	164,552	49,829	23.2	67.6
DOLORES	1,032	805	165	363	528	277	34.4	78.0
DOUGLAS	35,698	25,576	12,816	9,170	21,986	3,590	14.0	71.6
EAGLE	12,880	8,166	3,443	3,151	6,594	1,572	19.2	63.4
ELBERT	6,056	4,590	1,953	1,926	3,879	711	15.4	75.7
EL PASO	213,647	145,988	67,592	54,546	122,138	23,850	16.3	68.3
FREMONT	20,467	14,256	5,543	6,194	11,737	2,519	17.6	69.6
GARFIELD	15,553	11,632	4,938	4,879	9,817	1,875	16.0	75.1
GILPIN	2,456	1,626	686	666	1,352	274	16.8	66.2
GRAND	5,981	3,963	1,716	1,569	3,285	678	17.1	66.2
GUNNISON	7,147	4,663	1,854	1,869	3,723	940	20.1	65.2
HINSDALE	563	428	170	164	334	94	21.9	76.0
HUERFANO	4,152	3,157	850	1,329	2,179	978	30.9	76.0
JACKSON	1,194	931	365	389	754	177	19.0	77.9
JEFFERSON	288,918	204,486	103,264	74,598	177,862	26,624	13.0	70.7
KIOWA	1,392	1,101	283	587	870	231	20.9	79.0
KIT CARSON	4,827	3,684	1,158	1,610	2,768	916	24.8	76.3
LAKE	3,345	2,651	1,109	949	2,058	593	22.3	79.2
LA PLATA	20,405	14,043	6,470	5,120	11,590	2,453	17.4	68.8
LARIMER	115,541	85,787	41,908	32,667	74,575	11,212	13.0	74.2
LAS ANIMAS	9,027	6,590	1,359	2,933	4,292	2,298	34.8	73.0

NUMBER 2

AN AMENDMENT TO SECTION 4 OF ARTICLE XXI OF THE CONSTITUTION OF THE STATE OF COLORADO, MAKING THE PROVISION ON REIMBURSEMENT OF RECALL EXPENSES FROM THE STATE TREASURY APPLICABLE ONLY TO STATE ELECTIVE OFFICERS, PROVIDING THAT THE GENERAL ASSEMBLY ESTABLISH PROCEDURES FOR SAID REIMBURSEMENT, AND AUTHORIZING THE GENERAL ASSEMBLY TO ESTABLISH PROCEDURES FOR THE REIMBURSEMENT OF RECALL EXPENSES OF LOCAL ELECTIVE OFFICERS BY LOCAL GOVERNMENTAL ENTITIES.

YES

NO

LINCOLN	2,964	2,826	763	1,092	1,855	471	20.2	78.4
LOGAN	11,628	8,472	3,094	4,003	7,097	1,375	16.2	72.8
MESA	55,290	38,795	17,796	16,088	33,834	4,961	12.7	70.1
MINERAL	666	416	137	192	329	87	20.9	62.4
MOFFAT	7,103	4,677	1,658	2,104	3,762	915	19.5	65.8
MONTEZUMA	9,854	7,010	2,523	3,315	5,838	1,172	16.7	71.1
MONTRÖSE	14,041	10,661	4,144	4,717	8,861	1,800	16.8	75.9
MORGAN	13,456	8,993	3,549	3,538	7,087	1,906	21.1	66.8
OTERO	12,174	8,569	2,822	3,615	6,437	2,132	24.8	70.3
OURAY	1,684	1,320	524	566	1,090	230	17.4	78.3
PARK	5,079	3,494	1,441	1,487	2,928	566	16.1	68.7
PHILLIPS	3,029	2,373	835	971	1,806	567	23.8	78.3
PITKIN	10,217	6,592	2,974	2,127	5,101	1,491	22.6	64.5
PROWERS	8,026	5,489	1,656	2,515	4,171	1,318	24.0	68.3
PUEBLO	76,973	57,087	23,014	25,619	48,633	8,454	14.8	74.1
RIO BLANCO	4,100	2,746	952	1,290	2,242	504	18.3	66.9
RIO GRANDE	5,875	4,605	1,594	2,258	3,852	753	16.3	78.3
ROUTT	10,283	6,516	2,887	2,474	5,361	1,155	17.7	63.3
SAGUACHE	2,834	2,119	607	861	1,468	651	30.7	74.7
SAN JUAN	604	442	180	187	367	75	16.9	73.1
SAN MIGUEL	2,710	1,934	621	841	1,462	472	24.4	71.3
SEDGWICK	1,986	1,611	594	607	1,201	410	25.4	81.1
SUMMIT	8,876	5,809	2,602	2,251	4,853	956	16.4	65.4
TELLER	7,177	5,670	2,487	2,449	4,886	784	13.8	79.0
WASHINGTON	3,531	2,818	1,011	1,287	2,298	520	18.4	79.8
WELD	70,336	50,680	21,732	21,883	43,615	7,065	13.9	72.0
YUMA	6,188	4,647	1,416	2,371	3,787	860	18.5	75.0
TOTAL	0203704901482665	645,002	551,118	1196,120	236,545	16.5	70.3	

Abstract of Votes Cast at the **GENERAL** election held on November, 8, 1988120 DAY LEG. SESSION - YES
120 DAY LEG. SESSION - NO1
2

	# REG	# VOTE	1	2	TOTAL	NO VOTE	%	NO VT	XTRNOUT
ADAMS	141,985	98,575	47,741	40,542	88,283	10,292	10.4	69.4	
ALAMOSA	6,960	5,112	2,061	2,327	4,388	724	14.1	73.4	
ARAPAHOE	238,658	164,420	76,420	63,194	139,614	24,806	15.0	68.8	
ARCHULETA	3,413	2,426	1,081	806	1,887	539	22.2	71.0	
BACA	3,161	2,658	841	1,243	2,084	574	21.5	84.0	
BENT	3,022	2,209	846	935	1,781	428	19.3	73.0	
BOULDER	157,212	113,809	43,740	57,764	101,504	12,305	10.8	72.3	
CHAFFEE	7,844	5,806	2,427	2,348	4,775	1,031	17.7	74.0	
CHEYENNE	1,589	1,231	458	488	946	285	23.1	77.4	
CLEAR CREEK	5,244	3,800	1,702	1,686	3,388	412	10.8	72.4	
CONEJOS	4,672	3,714	1,092	1,667	2,759	955	25.7	79.4	
COSTILLA	2,532	1,787	392	745	1,137	650	36.3	70.5	
CROWLEY	2,005	1,580	667	637	1,304	276	17.4	78.8	
CUSTER	1,682	1,234	596	428	1,024	210	17.0	73.3	
DELTA	13,046	9,869	4,400	3,902	8,302	1,567	15.8	75.6	
DENVER	317,059	214,381	85,414	82,467	167,881	46,500	21.6	67.6	
DOLORES	1,032	805	235	309	544	261	32.4	78.0	
DOUGLAS	35,698	25,576	12,188	10,384	22,572	3,004	11.7	71.6	
EAGLE	12,880	8,166	3,610	3,239	6,849	1,317	16.1	63.4	
ELBERT	6,056	4,590	2,053	1,962	4,015	575	12.5	75.7	
EL PASO	213,647	145,988	69,184	57,545	126,729	19,259	13.1	68.3	
FREMONT	20,467	14,256	6,398	5,475	11,873	2,383	16.7	69.6	
GARFIELD	15,553	11,692	5,434	4,670	10,104	1,588	13.5	75.1	
GILPIN	2,456	1,626	643	737	1,380	246	15.1	66.2	
GRAND	5,981	3,963	1,644	1,769	3,413	550	13.8	66.2	
GUNNISON	7,147	4,663	1,841	2,076	3,917	746	15.9	65.2	
HINSDALE	563	428	161	182	343	85	19.8	76.0	
HUERFANO	4,152	3,157	1,112	1,100	2,212	945	29.9	76.0	
JACKSON	1,194	931	474	338	812	119	12.7	77.9	
JEFFERSON	288,918	204,486	96,904	84,532	181,436	23,050	11.2	70.7	
KIOWA	1,392	1,101	364	426	790	311	28.2	79.0	
KIT CARSON	4,827	3,684	1,494	1,420	2,914	770	20.9	76.3	
LAKE	3,345	2,651	1,004	1,085	2,089	562	21.1	79.2	
LA PLATA	20,405	14,043	5,536	6,402	11,938	2,105	14.9	68.8	
LARIMER	115,541	85,787	43,533	33,570	77,103	8,684	10.1	74.2	
LAS ANIMAS	9,027	6,590	1,880	2,369	4,249	2,341	35.5	73.0	

NUMBER 3

"AN AMENDMENT TO SECTION 7 OF ARTICLE V OF THE CONSTITUTION OF THE STATE OF COLORADO, PROVIDING THAT REGULAR SESSIONS OF THE GENERAL ASSEMBLY SHALL NOT EXCEED ONE HUNDRED TWENTY CALENDAR DAYS."

YES

NO

LINCOLN	2,964	2,326	921	973	1,894	432	18.5	78.4
LOGAN	11,628	8,472	3,680	3,600	7,280	1,192	14.0	72.8
MESA	55,290	38,795	20,389	14,155	34,544	4,251	10.9	70.1
MINERAL	666	416	159	179	338	78	18.7	62.4
MOFFAT	7,103	4,677	1,854	1,993	3,847	830	17.7	65.8
MONTEZUMA	9,854	7,010	2,611	3,322	5,933	1,077	15.3	71.1
MONTROSE	14,041	10,661	4,489	4,628	9,117	1,544	14.4	75.9
MORGAN	13,456	8,993	3,949	3,367	7,316	1,677	18.6	66.8
OTERO	12,174	8,569	3,323	3,263	6,586	1,983	23.1	70.3
OURAY	1,584	1,320	538	570	1,108	212	16.0	78.3
PARK	5,079	3,494	1,273	1,706	2,979	515	14.7	68.7
PHILLIPS	3,029	2,373	837	1,030	1,867	506	21.3	78.3
PITKIN	10,217	6,592	2,690	2,699	5,389	1,203	18.2	64.5
PROWERS	8,026	5,489	1,942	2,405	4,347	1,142	20.8	68.3
PUEBLO	76,973	57,087	26,620	22,533	49,153	7,934	13.8	74.1
RIO BLANCO	4,100	2,746	1,205	1,115	2,320	426	15.5	66.9
RIO GRANDE	5,875	4,605	1,834	2,062	3,896	709	15.3	78.3
ROUTT	10,283	6,516	2,894	2,624	5,518	998	15.3	63.3
SAGUACHE	2,834	2,119	719	763	1,482	637	30.0	74.7
SAN JUAN	604	442	170	198	368	74	16.7	73.1
SAN MIGUEL	2,710	1,934	848	693	1,541	398	20.8	71.3
SEDGWICK	1,986	1,611	548	716	1,264	347	21.5	81.1
SUMMIT	8,878	5,809	2,679	2,414	5,093	716	12.3	65.4
TELLER	7,177	5,670	2,470	2,522	4,992	678	11.9	79.0
WASHINGTON	3,531	2,818	886	1,462	2,348	470	16.6	79.8
WELD	70,336	50,680	24,724	20,293	45,017	5,663	11.1	72.0
YUMA	6,188	4,647	1,541	2,305	3,846	801	17.2	75.0
TOTAL	0203704901432665	641,368	584,3591225,722	206,943	14.4	70.3		

Abstract of Votes Cast at the **GENERAL** election held on November, 8, 1988

CONSTITUTION CLEAN-UP - YES
 CONSTITUTION CLEAN-UP - NO

1
 2

	# REG	# VOTE	1	2	TOTAL	NO VOTE	%	NO VT	XTRNOUT
ADAMS	141,985	98,575	57,805	29,004	86,309	12,266	12.4	69.4	
ALAMOSA	6,960	5,112	2,149	2,018	4,167	945	18.4	73.4	
ARAPAHOE	238,658	164,420	96,123	37,435	133,558	30,862	18.7	68.8	
ARCHULETA	3,413	2,426	1,139	688	1,827	599	24.6	71.0	
BACA	3,161	2,658	721	1,296	2,017	641	24.1	84.0	
BENT	3,022	2,209	892	819	1,711	498	22.5	73.0	
BOULDER	157,212	113,809	68,616	30,001	98,617	15,192	13.3	72.3	
CHAFFEE	7,844	5,806	2,672	2,089	4,761	1,045	17.9	74.0	
CHEYENNE	1,589	1,231	386	498	884	347	28.1	77.4	
CLEAR CREEK	5,244	3,800	2,277	1,001	3,278	522	13.7	72.4	
COÑEJOS	4,672	3,714	974	1,691	2,665	1,049	28.2	79.4	
COSTILLA	2,532	1,787	419	689	1,108	679	37.9	70.5	
CROWLEY	2,005	1,580	615	669	1,284	296	18.7	78.8	
CUSTER	1,682	1,234	578	445	1,023	211	17.0	73.3	
DELTA	13,046	9,869	4,868	3,267	8,135	1,734	17.5	75.6	
DENVER	317,059	214,381	111,943	50,902	162,845	51,536	24.0	67.6	
DOLORES	1,032	805	202	339	541	264	32.7	78.0	
DOUGLAS	35,698	25,576	15,953	5,889	21,842	3,734	14.5	71.6	
EAGLE	12,880	8,166	4,891	1,888	6,779	1,387	16.9	63.4	
ELBERT	6,056	4,590	2,385	1,466	3,851	739	16.1	75.7	
EL PASO	218,647	145,988	82,723	39,792	122,515	23,473	16.0	68.3	
FREMONT	20,467	14,256	6,529	4,966	11,495	2,761	19.3	69.6	
GARFIELD	15,553	11,692	6,284	3,573	9,807	1,885	16.1	75.1	
GILPIN	2,456	1,626	852	458	1,310	316	19.4	66.2	
GRAND	5,981	3,963	2,054	1,245	3,299	664	16.7	66.2	
GUNNISON	7,147	4,663	2,356	1,413	3,769	894	19.1	65.2	
HINSDALE	563	428	206	127	333	95	22.1	76.0	
HUERFANO	4,152	3,157	1,166	971	2,137	1,020	32.3	76.0	
JACKSON	1,194	931	431	324	755	176	18.9	77.9	
JEFFERSON	288,918	204,486	128,596	49,633	178,229	26,257	12.8	70.7	
KIOWA	1,392	1,101	346	533	879	222	20.1	79.0	
KIT CARSON	4,827	3,684	1,428	1,319	2,747	937	25.4	76.3	
LAKE	3,345	2,651	1,201	887	2,088	563	21.2	79.2	
LA PLATA	20,405	14,043	7,990	3,614	11,604	2,439	17.3	68.8	
LARIMER	115,541	85,787	52,771	22,067	74,838	10,949	12.7	74.2	
LAS ANIMAS	9,027	6,590	1,635	2,313	3,948	2,642	40.0	73.0	

NUMBER 4

"AN AMENDMENT TO ARTICLES V, VII, VIII, AND X OF THE CONSTITUTION OF THE STATE OF COLORADO CONCERNING THE MAXIMUM EIGHT-HOUR WORKDAY APPLICABLE TO PERSONS WHO ARE EMPLOYED IN CERTAIN OCCUPATIONS, CONFORMING THE AGE QUALIFICATION FOR ELECTORS TO THAT REQUIRED BY THE CONSTITUTION OF THE UNITED STATES, AND CONCERNING THE DELETION OF OBSOLETE PROVISIONS RELATING TO SUFFRAGE FOR WOMEN, SELECTION OF THE SEAT OF GOVERNMENT OF THE STATE, APPROPRIATIONS FOR THE CAPITOL BUILDING, AND STATE SUPPORT FOR THE 1976 WINTER OLYMPICS."

YES

NO

LINCOLN	2,964	2,326	948	910	1,858	468	20.1	78.4
LOGAN	11,628	8,472	4,032	2,917	6,949	1,523	17.9	72.8
MESA	55,290	38,795	21,370	12,219	33,589	5,206	13.4	70.1
MINERAL	666	416	175	147	322	94	22.5	62.4
MOFFAT	7,103	4,677	2,011	1,734	3,745	932	19.9	65.8
MONTEZUMA	9,854	7,010	3,200	2,584	5,784	1,226	17.4	71.1
MONTRORSE	14,041	10,661	5,219	3,613	8,832	1,829	17.1	75.9
MORGAN	13,456	8,993	4,159	2,865	7,024	1,969	21.8	66.8
OTERO	12,174	8,569	3,288	2,988	6,276	2,293	26.7	70.3
OURAY	1,684	1,320	680	392	1,072	248	18.7	78.3
PARK	5,079	3,494	1,816	1,078	2,894	600	17.1	68.7
PHILLIPS	3,029	2,373	964	816	1,780	593	24.9	78.3
PITKIN	10,217	6,592	4,061	1,262	5,323	1,269	19.2	64.5
PROWERS	8,026	5,489	1,983	2,216	4,199	1,290	23.5	68.3
PUEBLO	76,973	57,087	28,119	19,510	47,629	9,458	16.5	74.1
RIO BLANCO	4,100	2,746	1,189	1,021	2,210	536	19.5	66.9
RIO GRANDE	5,875	4,605	1,748	1,938	3,686	919	19.9	78.3
ROUTT	10,283	6,516	3,363	1,991	5,354	1,162	17.8	63.3
SAGUACHE	2,834	2,119	735	703	1,438	681	32.1	74.7
SAN JUAN	604	442	230	134	364	78	17.6	73.1
SAN MIGUEL	2,710	1,934	1,065	453	1,518	416	21.5	71.3
SEDGWICK	1,986	1,611	730	441	1,171	440	27.3	81.1
SUMMIT	8,876	5,809	3,683	1,242	4,925	884	15.2	65.4
TELLER	7,177	5,670	3,152	1,731	4,883	787	13.8	79.0
WASHINGTON	3,531	2,818	1,210	1,060	2,270	548	19.4	79.8
WELD	70,336	50,680	26,737	16,617	43,354	7,326	14.4	72.0
YUMA	6,188	4,647	1,757	1,995	3,752	895	19.2	75.0
TOTAL	0203704901432665	799,250	389,906	1189,156	243,509	16.9	70.3	

Abstract of Votes Cast at the **GENERAL** election held on November, 8, 1988UNPATENTED MINING CLAIMS - YES
UNPATENTED MINING CLAIMS - NO1
2

	# REG	# VOTE	1	2	TOTAL	NO VOTE	%	NO VT	ZTRNOUT
ADAMS	141,985	98,575	44,585	42,283	86,868	11,707	11.8	69.4	
ALAMOSA	6,960	5,112	1,690	2,596	4,286	826	16.1	73.4	
ARAPAHOE	238,658	164,420	78,068	61,528	139,596	24,824	15.0	68.8	
ARCHULETA	3,413	2,426	981	902	1,883	543	22.3	71.0	
BACA	3,161	2,658	685	1,341	2,026	632	23.7	84.0	
BENT	3,022	2,209	686	1,041	1,727	482	21.8	73.0	
BOULDER	157,212	113,809	46,609	52,899	99,508	14,301	12.5	72.3	
CHAFFEE	7,844	5,806	2,714	2,092	4,806	1,000	17.2	74.0	
CHEYENNE	1,589	1,231	320	578	898	333	27.0	77.4	
CLEAR CREEK	5,244	3,800	1,791	1,654	3,445	355	9.3	72.4	
CONEJOS	4,672	3,714	703	1,952	2,655	1,059	28.5	79.4	
COSTILLA	2,532	1,787	288	857	1,145	642	35.9	70.5	
CROWLEY	2,005	1,580	483	772	1,255	325	20.5	78.8	
CUSTER	1,682	1,234	571	496	1,067	167	13.5	73.3	
DELTA	13,046	9,869	4,763	3,647	8,410	1,459	14.7	75.6	
DENVER	317,059	214,381	88,973	72,010	160,983	53,398	24.9	67.6	
DOLORES	1,082	805	222	346	568	237	29.4	78.0	
DOUGLAS	35,698	25,576	12,341	9,738	22,079	3,497	13.6	71.6	
EAGLE	12,880	8,166	3,662	3,259	6,921	1,245	15.2	63.4	
ELBERT	6,056	4,590	1,875	2,009	3,884	706	15.3	75.7	
EL PASO	213,647	145,988	57,768	65,020	122,788	23,200	15.8	68.3	
FREMONT	20,467	14,256	5,810	6,131	11,941	2,315	16.2	69.6	
GARFIELD	15,553	11,692	5,492	4,663	10,155	1,537	13.1	75.1	
GILPIN	2,456	1,626	755	623	1,378	248	15.2	66.2	
GRAND	5,981	3,963	1,585	1,726	3,311	652	16.4	66.2	
GUNNISON	7,147	4,663	2,128	1,751	3,879	784	16.8	65.2	
HINSDALE	563	428	188	164	352	76	17.7	76.0	
HUERFANO	4,152	3,157	1,017	1,158	2,175	982	31.1	76.0	
JACKSON	1,194	931	459	303	762	169	18.1	77.9	
JEFFERSON	288,918	204,486	98,809	80,159	178,968	25,518	12.4	70.7	
KIDWA	1,392	1,101	247	606	853	248	22.5	79.0	
KIT CARSON	4,827	3,684	1,353	1,441	2,794	890	24.1	76.3	
LAKE	3,345	2,651	1,151	954	2,105	546	20.5	79.2	
LA PLATA	20,405	14,043	7,276	4,711	11,987	2,056	14.6	68.8	
LARIMER	115,541	85,787	40,784	34,296	75,080	10,707	12.4	74.2	
LAS ANIMAS	9,027	6,590	1,217	2,763	3,980	2,610	39.6	73.0	

NUMBER 5

"AN AMENDMENT TO SECTION 3 OF ARTICLE X OF THE CONSTITUTION OF THE STATE OF COLORADO, CREATING AN EXEMPTION FROM PROPERTY TAXATION FOR NON-PRODUCING UNPATENTED MINING CLAIMS."

YES

NO

LINCOLN	2,964	2,326	764	1,045	1,809	517	22.2	78.4
LOGAN	11,628	8,472	3,122	3,874	6,996	1,476	17.4	72.8
MESA	55,290	38,795	19,223	15,214	34,437	4,358	11.2	70.1
MINERAL	666	416	149	174	323	93	22.3	62.4
MOFFAT	7,103	4,677	1,770	2,028	3,798	879	18.7	65.8
MONTEZUMA	9,854	7,010	3,042	2,915	5,957	1,053	15.0	71.1
MONTRÖSE	14,041	10,661	4,899	4,207	9,108	1,555	14.5	75.9
MORGAN	13,456	8,993	3,545	3,502	7,047	1,946	21.6	66.8
OTERO	12,174	8,569	2,788	3,569	6,357	2,212	25.8	70.3
OURAY	1,684	1,320	615	502	1,117	203	15.3	78.3
PARK	5,079	3,494	1,482	1,518	3,000	494	14.1	68.7
PHILLIPS	3,029	2,373	808	963	1,771	602	25.3	78.3
PITKIN	10,217	6,592	3,018	2,621	5,639	953	14.4	64.5
PROWERS	8,026	5,489	1,589	2,537	4,126	1,363	24.8	68.3
PUEBLO	76,973	57,087	22,859	25,153	48,012	9,075	15.8	74.1
RIO BLANCO	4,100	2,746	1,060	1,236	2,296	450	16.3	66.9
RIO GRANDE	5,875	4,605	1,501	2,379	3,880	725	15.7	78.3
ROUTT	10,283	6,516	2,948	2,595	5,543	973	14.9	63.3
SAGUACHE	2,834	2,119	578	936	1,514	605	28.5	74.7
SAN JUAN	604	442	162	211	373	69	15.6	73.1
SAN MIGUEL	2,710	1,924	1,026	568	1,594	340	17.5	71.3
SEDGWICK	1,986	1,611	595	581	1,176	435	27.0	81.1
SUMMIT	8,876	5,809	2,912	2,208	5,120	689	11.8	65.4
TELLER	7,177	5,670	2,305	2,740	5,045	625	11.0	79.0
WASHINGTON	3,531	2,818	1,123	1,140	2,263	555	19.6	79.8
WELD	70,336	50,680	20,517	23,219	43,736	6,944	13.7	72.0
YUMA	6,188	4,647	1,572	2,191	3,763	884	19.0	75.0
TOTAL	0203704901432665	624,021	578,295	1202,316	230,349	16.0	70.3	

Abstract of Votes Cast at the **GENERAL** election held on November, 8, 1988TAXES - YES
TAXES - NO

1

2

	# REG	# VOTE	1	2	TOTAL	NO VOTE	%	NO VT	ZTRNDUT
ADAMS	141,985	98,575	48,622	46,374	94,996	3,579	3.6	69.4	
ALAMOSA	6,960	5,112	1,270	3,505	4,775	337	6.5	73.4	
ARAPAHOE	238,658	164,420	58,970	95,396	154,366	10,054	6.1	68.8	
ARCHULETA	3,413	2,426	860	1,393	2,253	173	7.1	71.0	
BACA	3,161	2,658	635	1,830	2,465	193	7.2	84.0	
BENT	3,022	2,209	589	1,452	2,041	168	7.6	73.0	
BOULDER	157,212	113,809	41,669	67,729	109,398	4,411	3.8	72.3	
CHAFFEE	7,844	5,806	2,028	3,204	5,232	574	9.8	74.0	
CHEYENNE	1,589	1,231	400	733	1,133	98	7.9	77.4	
CLEAR CREEK	5,244	3,800	1,630	2,012	3,642	158	4.1	72.4	
CONEJOS	4,672	3,714	838	2,301	3,139	575	15.4	79.4	
COSTILLA	2,532	1,787	349	1,025	1,374	413	23.1	70.5	
CROWLEY	2,005	1,580	357	1,102	1,459	121	7.6	78.8	
CUSTER	1,682	1,234	442	714	1,156	78	6.3	73.3	
DELTA	13,046	9,869	5,117	4,049	9,166	703	7.1	75.6	
DENVER	317,059	214,381	70,122	120,558	190,680	23,701	11.0	67.6	
DOLORES	1,032	805	240	444	684	121	15.0	78.0	
DOUGLAS	35,698	25,576	10,757	13,595	24,352	1,224	4.7	71.6	
EAGLE	12,880	8,166	3,309	4,267	7,576	590	7.2	63.4	
ELBERT	6,056	4,590	1,765	2,647	4,412	178	3.8	75.7	
EL PASO	213,647	145,988	80,423	58,207	138,630	7,358	5.0	68.3	
FREMONT	20,467	14,256	6,178	7,128	13,306	950	6.6	69.6	
GARFIELD	15,553	11,692	5,306	5,741	11,047	645	5.5	75.1	
GILPIN	2,456	1,626	704	833	1,537	89	5.4	66.2	
GRAND	5,981	3,963	1,390	2,415	3,805	158	3.9	66.2	
GUNNISON	7,147	4,663	1,455	2,870	4,325	338	7.2	65.2	
HINSDALE	563	428	146	247	393	35	8.1	76.0	
HUERFANO	4,152	3,157	929	1,823	2,752	405	12.8	76.0	
JACKSON	1,194	931	234	639	873	58	6.2	77.9	
JEFFERSON	288,918	204,486	77,616	118,992	196,608	7,878	3.8	70.7	
KIOWA	1,392	1,101	294	708	1,002	99	8.9	79.0	
KIT CARSON	4,827	3,684	968	2,462	3,430	254	6.8	76.8	
LAKE	3,345	2,651	1,024	1,245	2,269	382	14.4	79.2	
LA PLATA	20,405	14,043	6,067	7,104	13,171	872	6.2	68.8	
LARIMER	115,541	85,787	33,435	48,980	82,415	3,372	3.9	74.2	
LAS ANIMAS	9,027	6,590	1,399	3,714	5,113	1,477	22.4	73.0	

NUMBER 6

SHALL THERE BE AN AMENDMENT TO ARTICLE X OF THE COLORADO CONSTITUTION TO REQUIRE VOTER APPROVAL FOR CERTAIN INCREASES IN STATE AND LOCAL GOVERNMENT TAX REVENUES, TO RESTRICT PROPERTY, INCOME, SALES, AND OTHER TAXES, AND TO LIMIT THE RATE OF INCREASE IN STATE SPENDING?

YES

NO

LINCOLN	2,964	2,326	508	1,695	2,203	123	5.2	78.4
LOGAN	11,628	8,472	2,850	5,091	7,941	531	6.2	72.8
MESA	55,290	38,795	22,086	15,221	37,307	1,488	3.8	70.1
MINERAL	666	416	111	277	388	28	6.7	62.4
MOFFAT	7,103	4,677	1,864	2,394	4,258	419	8.9	65.8
MONTEZUMA	9,854	7,010	3,448	3,047	6,495	515	7.3	71.1
MONTROSE	14,041	10,661	4,930	5,083	10,013	648	6.0	75.9
MORGAN	13,456	8,993	2,678	5,611	8,289	704	7.8	66.8
OTERO	12,174	8,569	2,106	5,470	7,576	993	11.5	70.3
OURAY	1,684	1,320	505	749	1,254	66	5.0	78.3
PARK	5,079	3,494	1,476	1,795	3,271	223	6.3	68.7
PHILLIPS	3,029	2,373	539	1,691	2,230	143	6.0	78.3
PITKIN	10,217	6,592	2,613	3,489	6,052	540	8.1	64.5
PROWERS	8,026	5,489	1,261	3,590	4,851	638	11.6	68.3
PUEBLO	76,973	57,087	20,168	33,675	53,843	3,244	5.6	74.1
RIO BLANCO	4,100	2,746	1,022	1,604	2,626	120	4.3	66.9
RIO GRANDE	5,875	4,605	1,162	3,137	4,299	306	6.6	78.3
ROUTT	10,283	6,516	2,488	3,584	6,072	444	6.8	63.3
SAGUACHE	2,834	2,119	506	1,271	1,777	342	16.1	74.7
SAN JUAN	604	442	177	238	415	27	6.1	73.1
SAN MIGUEL	2,710	1,934	579	1,234	1,813	121	6.2	71.3
SEDGWICK	1,986	1,611	456	1,013	1,469	142	8.8	81.1
SUMMIT	8,876	5,809	2,177	3,365	5,542	267	4.5	65.4
TELLER	7,177	5,670	3,014	2,444	5,458	212	3.7	79.0
WASHINGTON	3,531	2,818	680	1,991	2,671	147	5.2	79.8
WELD	70,336	50,680	19,784	28,769	48,553	2,127	4.1	72.0
YUMA	6,188	4,647	1,159	3,159	4,318	329	7.0	75.0
TOTAL	0203704901432665	567,884	778,075	1345,959	86,706	6.0	70.3	

Abstract of Votes Cast at the **GENERAL** election held on November, 8, 1988PREGNANCY - YES
PREGNANCY - NO1
2

	# REG	# VOTE	1	2	TOTAL	NO VOTE	%	NO VT	XTRNOUT
ADAMS	141,985	98,575	32,910	62,029	94,939	3,636	3.6	69.4	
ALAMOSA	6,960	5,112	1,266	3,349	4,615	497	9.7	73.4	
ARAPAHOE	298,658	164,420	63,913	88,178	152,091	12,329	7.4	68.8	
ARCHULETA	3,413	2,426	678	1,478	2,156	270	11.1	71.0	
BACA	3,161	2,658	476	1,957	2,433	225	8.4	84.0	
BENT	3,022	2,209	598	1,408	2,006	203	9.1	73.0	
BOULDER	157,212	113,809	56,922	52,879	109,801	4,008	3.5	72.3	
CHAFFEE	7,844	5,806	1,617	3,587	5,204	602	10.3	74.0	
CHEYENNE	1,589	1,231	217	923	1,140	91	7.3	77.4	
CLEAR CREEK	5,244	3,800	1,733	1,881	3,614	186	4.8	72.4	
CONEJOS	4,672	3,714	497	2,628	3,125	589	15.8	79.4	
COSTILLA	2,532	1,787	280	1,131	1,411	376	21.0	70.5	
CROWLEY	2,005	1,580	381	1,063	1,444	136	8.6	78.8	
CUSTER	1,682	1,234	324	829	1,153	81	6.5	73.3	
DELTA	13,046	9,869	2,732	6,467	9,199	670	6.7	75.6	
DENVER	317,059	214,381	93,880	98,994	192,874	21,507	10.0	67.6	
DOLORES	1,032	805	176	460	636	169	20.9	78.0	
DOUGLAS	35,698	25,576	9,214	15,109	24,323	1,253	4.8	71.6	
EAGLE	12,880	8,166	3,744	3,888	7,632	534	6.5	63.4	
ELBERT	6,056	4,590	1,527	2,887	4,414	176	3.8	75.7	
EL PASO	213,647	145,988	44,105	94,591	138,696	7,292	4.9	68.3	
FREMONT	20,467	14,256	3,581	9,589	13,170	1,086	7.6	69.6	
GARFIELD	15,553	11,692	4,489	6,525	11,014	678	5.7	75.1	
GILPIN	2,456	1,626	811	709	1,520	106	6.5	66.2	
GRAND	5,981	3,963	1,638	2,154	3,792	171	4.3	66.2	
GUNNISON	7,147	4,663	1,861	2,443	4,304	359	7.6	65.2	
HINSDALE	563	428	164	217	381	47	10.9	76.0	
HUERFANO	4,152	3,157	814	1,878	2,692	465	14.7	76.0	
JACKSON	1,194	931	359	506	865	66	7.0	77.9	
JEFFERSON	288,918	204,486	79,689	116,146	195,835	8,651	4.2	70.7	
KIOWA	1,392	1,101	205	786	991	110	9.9	79.0	
KIT CARSON	4,827	3,684	827	2,587	3,414	270	7.3	76.3	
LAKE	3,345	2,651	725	1,541	2,266	385	14.5	79.2	
LA PLATA	20,405	14,043	5,665	7,298	12,963	1,080	7.6	68.8	
LARIMER	115,541	85,787	31,662	50,815	82,477	3,310	3.8	74.2	
LAS ANIMAS	9,027	6,590	1,055	4,106	5,161	1,429	21.6	73.0	

NUMBER 7

SHALL THERE BE AN AMENDMENT TO REPEAL ARTICLE V, SECTION 50 OF THE COLORADO CONSTITUTION AND TO PROVIDE INSTEAD THAT THE STATE AND ITS AGENCIES, INSTITUTIONS, AND POLITICAL SUBDIVISIONS SHALL NOT PROHIBIT THE USE OF PUBLIC FUNDS FOR MEDICAL SERVICES FOR A WOMAN SOLELY BECAUSE OF HER CHOICE OF WHETHER OR NOT TO CONTINUE HER PREGNANCY?

YES

NO

LINCOLN	2,964	2,326	628	1,569	2,197	129	5.5	78.4
LOGAN	11,628	8,472	2,371	5,481	7,852	620	7.3	72.8
MESA	55,290	38,795	14,074	23,149	37,223	1,572	4.0	70.1
MINERAL	666	416	132	238	370	46	11.0	62.4
MOFFAT	7,103	4,677	1,189	3,074	4,263	414	8.8	65.8
MONTEZUMA	9,854	7,010	2,100	4,288	6,388	622	8.8	71.1
MONTE ROSE	14,041	10,661	3,243	6,748	9,991	670	6.2	75.9
MORGAN	13,456	8,993	2,492	5,782	8,274	719	7.9	66.8
OTERO	12,174	8,569	2,198	5,317	7,515	1,054	12.3	70.3
OURAY	1,684	1,320	473	763	1,236	84	6.3	78.3
PARK	5,079	3,494	1,476	1,795	3,271	223	6.3	68.7
PHILLIPS	3,029	2,373	512	1,680	2,192	181	7.6	78.3
PITKIN	10,217	6,592	3,794	2,300	6,094	498	7.5	64.5
PROWERS	8,026	5,489	1,206	3,588	4,794	695	12.6	68.3
PUEBLO	76,973	57,087	17,670	35,490	53,160	3,927	6.8	74.1
RIO BLANCO	4,100	2,746	827	1,745	2,572	174	6.3	66.9
RIO GRANDE	5,875	4,605	1,056	3,044	4,100	505	10.9	78.3
ROUTT	10,283	6,516	2,850	3,210	6,060	456	6.9	63.3
SAGUACHE	2,834	2,119	556	1,212	1,768	351	16.5	74.7
SAN JUAN	604	442	149	253	402	40	9.0	73.1
SAN MIGUEL	2,710	1,984	1,009	755	1,764	170	8.7	71.3
SEDGWICK	1,986	1,611	392	1,080	1,472	139	8.6	81.1
SUMMIT	8,876	5,809	2,845	2,714	5,559	250	4.3	65.4
TELLER	7,177	5,670	1,902	3,510	5,412	258	4.5	79.0
WASHINGTON	3,531	2,818	659	1,958	2,612	206	7.3	79.8
WELD	70,336	50,680	16,344	32,206	48,550	2,130	4.2	72.0
YUMA	6,188	4,647	1,188	3,118	4,306	341	7.3	75.0
TOTAL	2023704901432665	534,070	809,0781348,148	89,517	6.2	70.3		

Abstract of Votes Cast at the **GENERAL** election held on November, 8, 1988

LEGISLATIVE REFORM - YES
LEGISLATIVE REFORM - NO

1
2

	# REG	# VOTE	1	2	TOTAL	NO VOTE	%	NO VT	ZTRNOUT
ADAMS	141,985	98,575	60,840	24,644	85,484	13,091	13.2	69.4	
ALAMOSA	6,960	5,112	2,341	1,932	4,273	839	16.4	73.4	
ARAPAHOE	238,658	164,420	99,586	33,441	133,027	31,393	19.0	68.8	
ARCHULETA	3,413	2,426	1,178	631	1,809	617	25.4	71.0	
BACA	3,161	2,658	797	1,255	2,052	606	22.7	84.0	
BENT	3,022	2,209	835	865	1,700	509	23.0	73.0	
BOULDER	157,212	113,809	74,770	22,567	97,337	16,472	14.4	72.3	
CHAFFEE	7,844	5,806	2,911	1,590	4,501	1,305	22.4	74.0	
CHEYENNE	1,589	1,231	428	513	941	290	23.5	77.4	
CLEAR CREEK	5,244	3,800	2,466	797	3,263	537	14.1	72.4	
CONEJOS	4,672	3,714	1,226	1,425	2,651	1,063	28.6	79.4	
COSTILLA	2,532	1,787	425	724	1,149	639	35.7	70.5	
CROWLEY	2,005	1,580	535	747	1,282	298	18.8	78.8	
CUSTER	1,682	1,234	602	402	1,004	230	18.6	73.3	
DELTA	13,046	9,869	5,408	2,715	8,123	1,746	17.6	75.6	
DENVER	317,059	214,381	123,594	40,465	164,059	50,322	23.4	67.6	
DOLORS	1,032	805	250	278	528	277	34.4	78.0	
DOUGLAS	35,698	25,576	16,791	5,022	21,813	3,763	14.7	71.6	
EAGLE	12,880	8,166	4,384	2,080	6,464	1,702	20.8	63.4	
ELBERT	6,056	4,590	2,575	1,359	3,934	656	14.2	75.7	
EL PASO	213,647	145,988	89,400	33,016	122,416	23,572	16.1	68.3	
FREMONT	20,467	14,256	7,963	3,806	11,769	2,487	17.4	69.6	
GARFIELD	15,553	11,692	7,031	2,743	9,774	1,918	16.4	75.1	
GILPIN	2,456	1,626	972	331	1,303	323	19.8	66.2	
GRAND	5,981	3,963	2,196	1,088	3,284	679	17.1	66.2	
GUNNISON	7,147	4,663	2,469	1,150	3,619	1,044	22.3	65.2	
HINSDALE	563	428	222	113	335	93	21.7	78.0	
HUERFANO	4,152	3,157	1,255	933	2,188	969	30.6	76.0	
JACKSON	1,194	931	426	348	774	162	17.4	77.9	
JEFFERSON	288,918	204,486	133,387	42,506	175,893	28,593	13.9	70.7	
KIOWA	1,392	1,101	287	599	886	215	19.5	79.0	
KIT CARSON	4,827	3,684	1,498	1,294	2,792	892	24.2	76.3	
LAKE	3,345	2,651	1,272	667	1,939	712	26.8	79.2	
LA PLATA	20,405	14,043	8,337	3,181	11,518	2,525	17.9	68.8	
LARIMER	115,541	85,787	55,509	18,051	73,560	12,227	14.2	74.2	
LAS ANIMAS	9,027	6,590	1,699	2,100	3,799	2,791	42.3	73.0	

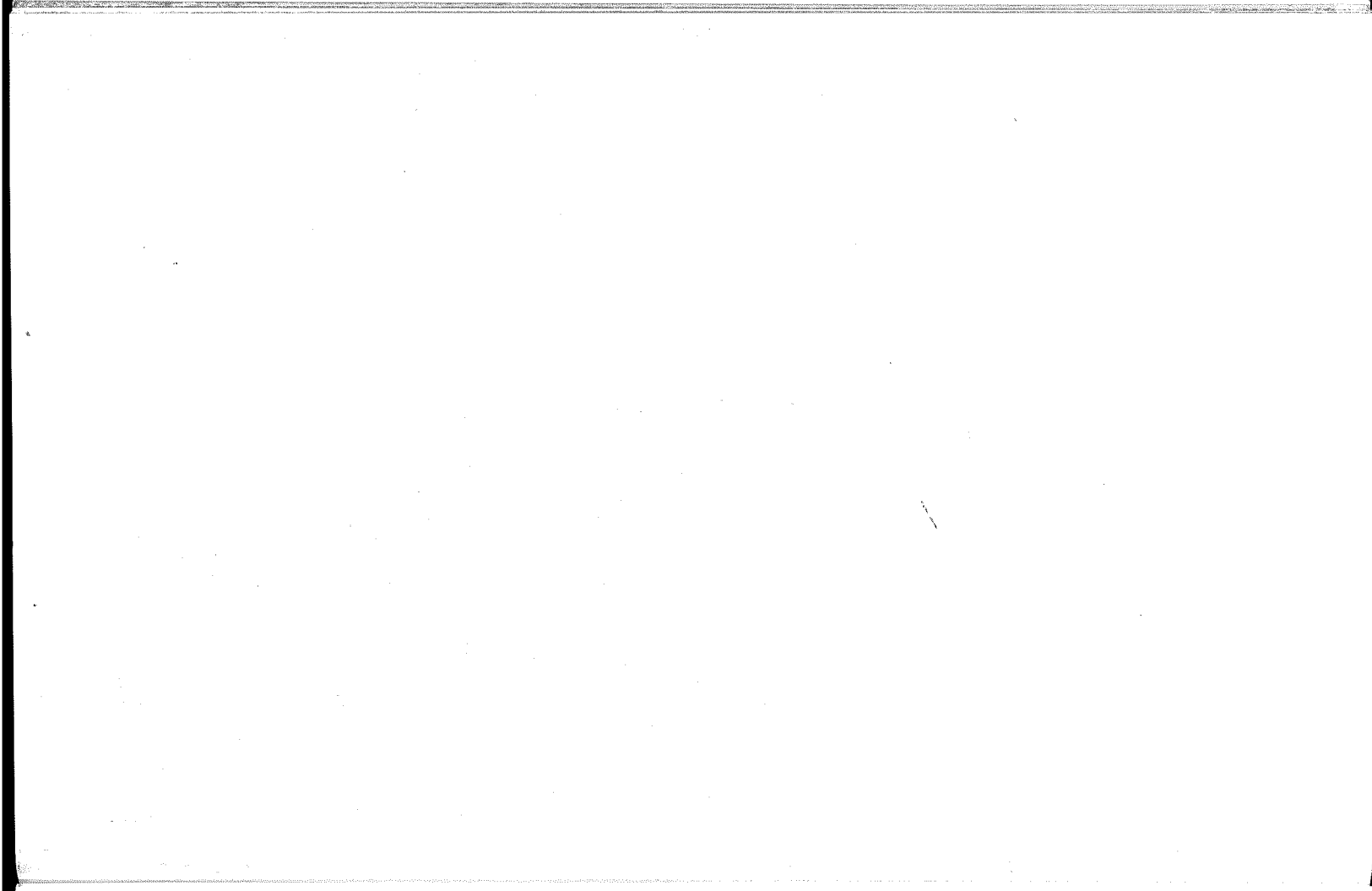
NUMBER 8

SHALL THERE BE AN AMENDMENT TO THE COLORADO CONSTITUTION TO REQUIRE THAT EVERY MEASURE REFERRED TO A COMMITTEE OF REFERENCE OF THE GENERAL ASSEMBLY BE CONSIDERED BY THE COMMITTEE UPON ITS MERITS, TO PROVIDE THAT EACH MEASURE REPORTED BY A COMMITTEE OF REFERENCE TO THE SENATE OR HOUSE SHALL APPEAR ON THE CALENDAR OF THAT CHAMBER IN THE ORDER IN WHICH IT WAS REPORTED, AND TO PROHIBIT MEMBERS OF THE GENERAL ASSEMBLY FROM COMMITTING THEMSELVES OR OTHER MEMBERS IN A PARTY CAUCUS TO VOTE IN FAVOR OF OR AGAINST ANY MATTER PENDING OR TO BE INTRODUCED IN THE GENERAL ASSEMBLY?

YES

NO

LINCOLN	2,964	2,326	903	982	1,885	441	18.9	78.4
LOGAN	11,628	8,472	4,079	2,935	7,014	1,458	17.2	72.8
MESA	55,290	38,795	24,569	9,151	33,720	5,075	13.0	70.1
MINERAL	666	416	144	177	321	95	22.8	62.4
MOFFAT	7,103	4,677	2,165	1,474	3,639	1,038	22.1	65.8
MONTEZUMA	9,854	7,010	3,592	2,159	5,751	1,259	17.9	71.1
MONTRÖSE	14,041	10,661	5,999	2,923	8,922	1,739	16.3	75.9
MORGAN	13,456	8,993	4,197	2,679	6,876	2,117	23.5	66.8
OTERO	12,174	8,569	2,888	3,459	6,347	2,222	25.9	70.3
OURAY	1,684	1,320	734	341	1,075	245	18.5	78.3
PARK	5,079	3,494	2,029	811	2,840	654	18.7	68.7
PHILLIPS	3,029	2,373	821	999	1,820	553	23.3	78.3
PITKIN	10,217	6,592	3,752	1,143	4,895	1,697	25.7	64.5
PROWERS	8,026	5,489	1,797	2,285	4,082	1,407	25.6	68.3
PUEBLO	76,973	57,087	28,717	19,899	48,616	8,471	14.8	74.1
RIO BLANCO	4,100	2,746	1,279	957	2,236	510	18.5	66.9
RIO GRANDE	5,875	4,605	1,908	1,931	3,839	766	16.6	78.3
ROUTT	10,283	6,516	3,735	1,564	5,299	1,217	18.6	63.3
SAGUACHE	2,834	2,119	754	699	1,453	666	31.4	74.7
SAN JUAN	604	442	223	141	364	78	17.6	73.1
SAN MIGUEL	2,710	1,934	1,004	456	1,460	474	24.5	71.8
SEDGWICK	1,986	1,611	613	587	1,200	411	25.5	81.1
SUMMIT	8,876	5,809	3,692	1,192	4,884	925	15.9	65.4
TELLER	7,177	5,670	3,518	1,387	4,905	765	13.4	79.0
WASHINGTON	3,531	2,818	949	1,395	2,344	474	16.8	79.8
WELD	70,336	50,680	30,696	13,055	43,751	6,929	13.6	72.0
YUMA	6,188	4,647	1,826	2,005	3,831	816	17.5	75.0
TOTAL	0208704901482665	852,448	332,159	1184,607	248,058	17.3	70.3	



Abstract of Votes Cast at the **GENERAL** election held on November, 8, 1988

Cultural Question

	YES	NO
Adams	62,147	29,591
Arapahoe	114,979	35,870
Boulder	80,644	27,480
Denver	141,153	44,405
Douglas	9,601	2,724
Jefferson	145,126	49,281
	<u>553,650</u>	<u>189,351</u>

Number 9

SHALL THE ZOO, MUSEUMS AND CULTURAL PROGRAMS IN THE SIX COUNTY METROPOLITAN AREA RECEIVE PROCEEDS FROM A ONE-TENTH OF A CENT SALES TAX TO BE DISTRIBUTED ACCORDING TO LAW WITH STRICT LIMITATIONS ON ADMINISTRATIVE COSTS WITH A GUARANTEED AMOUNT FOR EACH COUNTY AND GOVERNED BY A BOARD WITH REPRESENTATIVES FROM THE SIX COUNTIES?

YES
NO



Abstract of Votes Cast at the **GENERAL** election held on November, 8, 1988

SUPREME COURT JUSTICE

VOLLACK, ANTHONY F-YES
VOLLACK, ANTHONY F-NO

1
2

	# REG	# VOTE	1	2
ADAMS	141,985	98,575	54,131	24,902
ALAMOSA	6,960	5,112	2,967	1,096
ARAPAHOE	238,658	164,420	86,810	27,266
ARCHULETA	3,413	2,426	1,093	578
BACA	3,161	2,658	1,026	607
BENT	3,022	2,209	1,055	441
BOULDER	157,212	113,809	58,968	18,553
CHAFFEE	7,844	5,806	2,559	1,030
CHEYENNE	1,589	1,231	462	344
CLEAR CREEK	5,244	3,800	2,065	909
CONEJOS	4,672	3,714	1,667	962
COSTILLA	2,532	1,787	560	301
CROWLEY	2,005	1,580	843	335
CUSTER	1,682	1,234	671	233
DELTA	13,046	9,869	4,995	2,535
DENVER	317,059	214,381	85,399	19,924
DOLOROS	1,032	805	281	159
DOUGLAS	35,698	25,576	14,241	5,206
EAGLE	12,880	8,166	4,290	1,441
ELBERT	6,056	4,590	2,394	1,079
EL PASO	213,647	145,988	81,740	29,210
FREMONT	20,467	14,256	8,276	3,066
GARFIELD	15,553	11,692	6,570	2,329
GILPIN	2,456	1,626	690	300
GRAND	5,981	3,963	1,986	820
GUNNISON	7,147	4,663	1,999	872
HINSDALE	563	428	185	87