

STATE OF COLORADO

Abstract of Votes Cast

AT THE

PRIMARY ELECTION

Held on the Fourteenth Day of September, A. D. 1948

AND AT THE

GENERAL ELECTION

Held on the Second Day of November, A. D. 1948

FOR

Presidential Electors, United States Senators, Congressmen,
State, Legislative and District Officers

AND

Proposed Constitutional Amendments, Initiated
and Referred Bills

ALSO

Directory of the United States, State, Legislative,
District and County Officers



COMPILED FROM OFFICIAL RETURNS

BY

GEORGE J. BAKER
Secretary of State

1948

PRICE, 50 CENTS

JUSTICE OF SUPREME COURT

GOVERNOR

LIEUTENANT GOVERNOR

SECRETARY OF STATE

AUDITOR

TREASURER

ATTORNEY GENERAL

SUPERINTENDENT OF PUBLIC INSTRUCTION

George A. Luxford—R.
Allyn Cole—R.
E. V. Holland—D.
O. Otto Moore—D.

David A. Hamil—R.
Lee Knous—D.

Homer L. Pearson—R.
Walter W. Johnson—D.

Orville E. Frakes—R.
Harold R. Smethills—R.
George J. Baker—D.
Ernest H. Sterling—D.

H. Rodney Anderson—R.
Myron C. McGinley—D.

Arthur D. Baker—R.
Homer F. Bedford—D.

Duke W. Dunbar—R.
John W. Metzger—D.

Nettie S. Freed—R.

1,031
296
1,228
249
187
1,355
264
281
246
862
185
240
207
654
23,246
67
245
129
318
3,246
1,163
400
170
197
163
53
321
131
3,047
74
610
142
659
2,073
620
453
658
921
28
358
362
608
1,180
1,078
57
142
311
38
397
3,083
199
288
298
128
57
87
140
82
124
303
2,920
388

1,044
1,748
2,018
2,197
1,161
1,340
1,392
1,372
1,252
1,000
1,799
1,631
1,606
1,000
1,066
401
95
481
330
2,649
2,740
332
1,211
1,190
1,044
28,201
49,247
151
235
344
250
2,730
1,355
518
157
125
380
35
1,182
100
1,962
96
187
710
616
1,142
374
222
356
945
13
284
176
620
501
798
40
63
311
45
701
1,891
318
194
298
128
24
55
102
40
61
138
1,493
388

1,161
774
1,799
92
264
345
2,197
598
140
237
327
440
296
143
783
41,737
191
234
313
246
2,720
1,360
491
167
108
345
34
1,099
90
2,121
83
200
662
572
1,143
2,907
367
711
1,638
63
316
411
607
657
816
57
127
153
220
526
6,938
150
271
762
110
70
168
118
156
608
217
2,125
519

1,372
1,252
1,000
1,799
1,631
1,606
1,000
1,066
401
95
481
330
2,649
2,740
332
1,211
1,190
1,044
28,201
49,247
151
235
344
250
2,730
1,355
518
157
125
380
35
1,182
100
1,962
96
187
710
616
1,142
374
222
356
945
13
284
176
620
501
798
40
63
311
45
701
1,891
318
194
298
128
24
55
102
40
61
138
1,493
388

1,342
1,209
1,327
1,278
1,328
1,210
1,304
390
1,551
86
446
335
2,617
324
431
276
1,121
256
331
348
868
1,418
113
214
426
215
423
5,124
1,673
746
78
186
232
201
77
368
162
3,932
132
847
182
923
3,019
921
585
854
2,073
47
555
522
972
1,633
1,640
79
82
179
148
415
60
279
847
4,225
373
433
454
163
78
228
201
111
159
416
3,983
531

1,327
1,278
1,328
1,210
1,304
390
1,551
86
446
335
2,617
324
431
276
1,121
256
331
348
868
1,418
113
214
426
215
423
5,124
1,673
746
78
186
232
201
77
368
162
3,932
132
847
182
923
3,019
921
585
854
2,073
47
555
522
972
1,633
1,640
79
82
179
148
415
60
279
847
4,225
373
433
454
163
78
228
201
111
159
416
3,983
531

1,328
1,210
1,304
390
1,551
86
446
335
2,617
324
431
276
1,121
256
331
348
868
1,418
113
214
426
215
423
5,124
1,673
746
78
186
232
201
77
368
162
3,932
132
847
182
923
3,019
921
585
854
2,073
47
555
522
972
1,633
1,640
79
82
179
148
415
60
279
847
4,225
373
433
454
163
78
228
201
111
159
416
3,983
531

1,304
390
1,551
86
446
335
2,617
324
431
276
1,121
256
331
348
868
1,418
113
214
426
215
423
5,124
1,673
746
78
186
232
201
77
368
162
3,932
132
847
182
923
3,019
921
585
854
2,073
47
555
522
972
1,633
1,640
79
82
179
148
415
60
279
847
4,225
373
433
454
163
78
228
201
111
159
416
3,983
531

59,584 32,806 84,549 84,942 81,267 106,156 81,726 98,527 50,990 30,796 66,888 34,228 80,489 93,219 80,195 99,157 79,380 93,614 79,162 78

VE OFFICERS AND REGENTS OF THE UNIVERSITY OF COLORADO

ATTORNEY GENERAL		SUPERINTENDENT OF PUBLIC INSTRUCTION	REGENTS OF THE UNIVERSITY OF COLORADO						
Duke W. Dunbar—R.	John W. Metzger—D.	Nettie S. Freed—R.	Ralph L. Carr—R.	Robert R. Knowles—R.	H. Vance Austin—D.	Grace Keenehan—D.	Frank F. Lynch, Jr.—D.		
1,328	1,210	1,304	1,289	1,077	937	614	685	Adams	
383	903	390	387	298	676	513	494	Alamosa	
1,555	1,945	1,551	1,523	1,293	1,413	991	1,228	Arapahoe	
84	116	86	88	64	87	58	65	Archuleta	
434	332	446	498	362	234	166	64	Baca	
305	375	335	332	247	322	188	238	Bent	
2,594	2,374	2,617	2,606	2,285	1,794	1,356	1,417	Boulder	
317	636	324	317	250	449	364	433	Chaffee	
411	155	431	421	307	119	92	75	Cheyenne	
277	260	276	279	222	189	158	122	Clear Creek	
1,094	410	1,121	1,393	751	323	244	223	Conejos	
255	463	256	282	154	371	231	170	Costilla	
323	299	331	328	256	221	147	161	Crowley	
328	148	348	367	223	131	97	73	Custer	
1,029	875	1,052	1,007	803	641	486	454	Delta	
27,844	44,148	27,433	27,545	22,776	28,504	23,792	27,773	Denver	
113	214	118	129	69	165	107	93	Dolores	
426	275	358	358	293	219	161	131	Douglas	
215	367	205	223	166	242	209	214	Eagle	
423	387	440	454	319	209	174	156	Elbert	
5,124	3,127	5,083	5,075	4,283	2,236	1,665	1,876	El Paso	
1,673	1,543	1,713	1,669	1,291	1,045	845	939	Fremont	
746	589	765	735	565	432	321	312	Garfield	
78	175	81	85	64	127	109	86	Gilpin	
232	142	240	245	198	99	70	77	Grand	
201	374	206	211	175	289	228	217	Gunnison	
77	46	76	73	53	31	20	22	Hinsdale	
368	1,206	358	423	284	954	737	732	Huerfano	
162	129	175	180	133	95	66	59	Jackson	
3,932	2,367	3,941	3,811	3,254	1,637	1,261	1,419	Jefferson	
132	100	135	128	96	81	66	61	Kiowa	
816	224	836	810	600	155	124	109	Kit Carson	
181	757	161	180	140	578	421	504	Lake	
881	653	882	920	651	500	371	369	La Plata	
2,969	1,348	3,021	2,888	2,443	942	700	715	Larimer	
919	3,397	921	903	651	2,593	1,729	1,843	Las Animas	
582	464	566	598	460	351	262	228	Lincoln	
1,108	767	1,075	977	1,098	732	360	423	Logan	
1,584	1,976	1,607	1,529	1,310	1,357	974	1,140	Mesa	
46	87	48	45	35	64	40	40	Mineral	
548	388	567	535	433	273	226	218	Moffat	
513	573	514	513	352	380	265	301	Montezuma	
948	703	983	973	686	488	392	348	Montrose	
1,585	766	1,508	1,455	1,172	533	350	329	Morgan	
1,627	936	1,636	1,661	1,309	738	500	559	Otero	
80	81	79	81	62	62	49	38	Ouray	
173	147	182	176	143	114	86	68	Park	
399	169	388	384	327	143	100	72	Phillips	
56	277	59	65	38	207	164	138	Pitkin	
823	575	855	811	653	426	295	322	Prowers	
4,205	7,748	4,373	3,942	3,277	5,645	4,496	5,139	Pueblo	
370	203	367	372	290	141	106	110	Rio Blanco	
437	306	441	426	341	236	161	186	Rio Grande	
449	391	456	458	381	670	480	480	Routt	
159	136	162	158	130	115	69	70	Saguache	
77	85	78	77	63	68	54	40	San Juan	
118	230	123	123	91	165	146	94	San Miguel	
195	127	204	203	161	132	54	64	Sedgwick	
110	175	117	119	90	130	91	94	Summit	
159	655	161	167	124	511	342	366	Teller	
415	253	404	379	327	178	160	119	Washington	
3,862	2,304	3,684	3,632	3,319	1,669	1,199	1,254	Weld	
523	626	509	500	391	421	296	249	Yuma	
79,380	93,614	79,162	78,553	64,159	64,989	50,598	56,098		

ABSTRACT OF VOTES CAST AT A GENERAL ELECTION HELD ON TUESDAY, NOVEMBER 2, A. D. 1948, FOR PRESIDENTIAL ELECTORS, UN

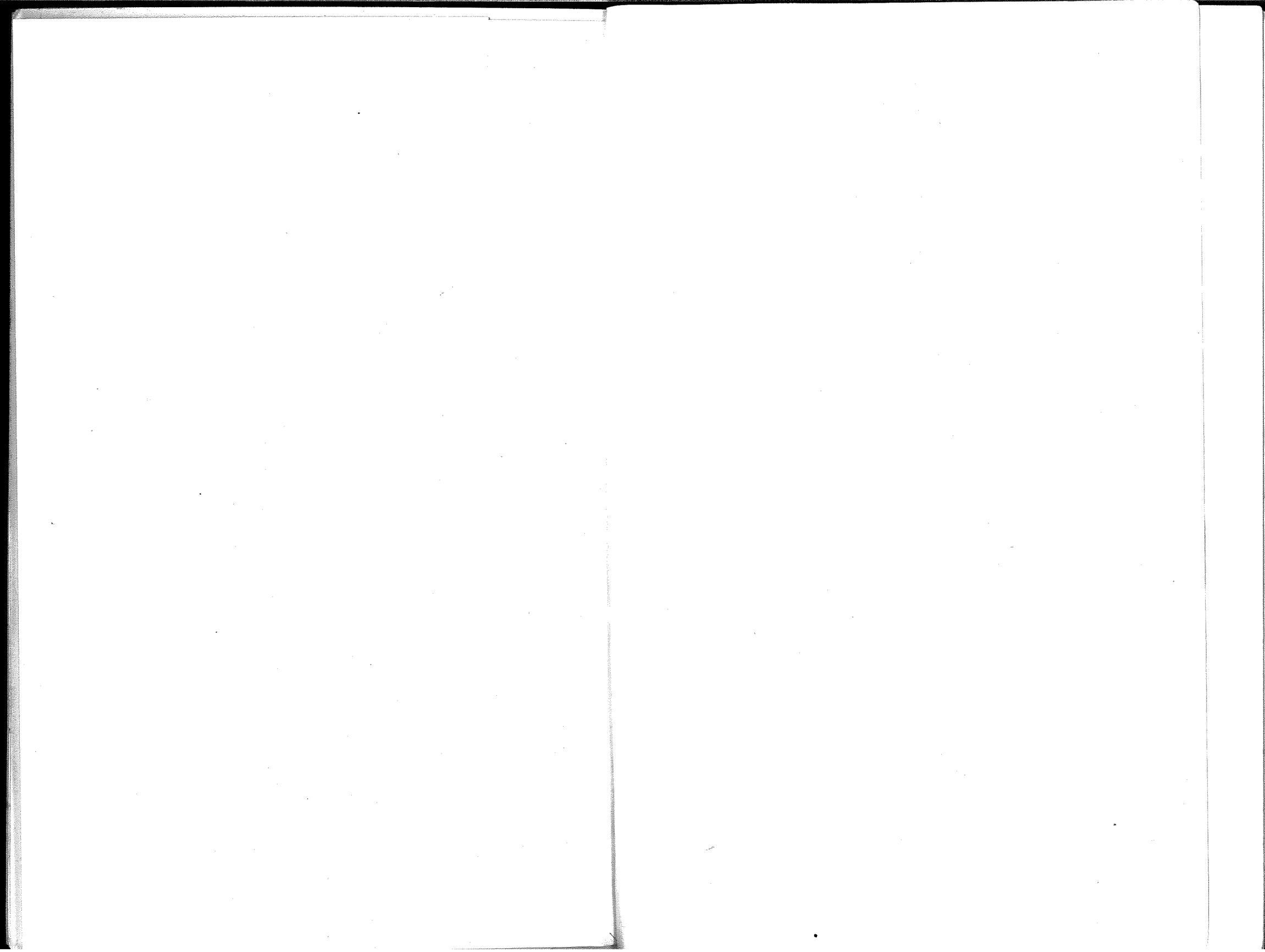
PRESIDENT OF U. S.				U. S. SENATOR				JUSTICES OF THE SUPREME COURT				GOVERNOR																			
Thomas E. Dewey—R.		Harry S. Truman—D.		Farrell Dobbs—Soc. Workers		Edward A. Teicher—Soc.-Labor		Norman Thomas—Soc.		Henry A. Wallace—Prog.		Edwin C. Johnson—D.		Will F. Nicholson—R.		Joe Gurule—Prog.		Carle Whitehead—Soc.		H. Lawrence Hinkley—R.		E. V. Holland—D.		George A. Luxford—R.		O. Otto Moore—D.		David A. Hamill—R.		Lee Knous—D.	
Adams	4,419	6,240	9	4	20	99	7,864	2,862	41	21	4,269	5,550	4,235	5,224	3,247	7,423															
Alamosa	1,950	2,395	4	4	24	24	3,087	1,270	48	2	1,900	2,287	2,071	2,071	1,523	2,869															
Arapahoe	6,962	7,943	44	44	122	122	10,511	4,495	41	46	6,446	7,395	6,513	7,069	4,699	10,298															
Archuleta	479	597	1	1	4	4	679	332	6	3	419	502	373	373	378	632															
Baca	1,260	1,368	0	0	0	0	1,678	947	5	4	1,177	1,092	953	956	1,150	1,494															
Bent	1,296	1,658	10	10	18	18	1,959	974	5	5	1,244	1,528	1,036	1,469	1,007	1,968															
Boulder	10,335	8,792	212	212	488	488	12,265	7,178	286	95	9,725	8,772	8,892	8,484	6,693	12,975															
Chaffee	1,476	2,065	7	7	31	31	2,621	980	4	3	1,350	2,024	1,278	1,847	1,093	2,473															
Cheyenne	713	657	1	1	13	13	859	503	1	1	702	537	621	533	596	781															
Clear Creek	836	810	0	0	1	1	1,064	592	3	10	788	736	808	696	569	1,093															
Conejos	1,532	2,236	12	14	8	8	2,479	1,070	120	12	1,743	1,526	1,498	1,331	1,514	2,164															
Costilla	921	1,563	8	13	8	8	1,659	816	18	5	941	1,299	811	1,236	931	1,533															
Crowley	1,027	1,004	1	1	3	3	1,384	656	4	4	961	934	863	903	771	1,254															
Custer	547	384	0	0	2	2	543	388	2	1	525	349	427	315	452	485															
Delta	3,158	3,171	3	3	20	20	4,251	2,176	46	5	2,910	2,932	2,599	2,549	2,318	4,124															
Denver	76,364	89,489	62	89	643	643	114,462	52,455	944	670	69,816	85,225	76,118	84,181	46,128	117,265															
Dolores	352	435	0	0	0	0	563	201	3	3	284	362	241	280	244	540															
Douglas	979	767	0	0	3	3	1,111	650	3	3	951	678	908	593	809	953															
Eagle	738	1,008	2	1	2	2	1,322	456	57	3	729	961	659	835	533	1,287															
Elbert	1,155	873	0	0	1	1	1,288	750	1	3	1,091	754	965	666	958	1,062															
El Paso	15,705	12,291	9	8	148	258	17,213	11,076	98	77	15,154	11,870	13,029	11,747	12,134	16,126															
Fremont	4,421	4,077	1	1	26	26	5,528	3,095	26	13	4,050	3,919	3,407	3,839	3,303	5,297															
Garfield	2,416	2,364	0	1	4	4	3,183	1,632	16	3	2,179	2,185	2,040	2,008	1,827	2,959															
Gilpin	302	296	0	0	3	3	420	192	1	5	255	285	264	278	224	428															
Grand	777	763	0	2	8	12	1,068	517	5	3	759	695	740	565	531	1,035															
Gunnison	1,103	1,326	2	2	5	5	1,782	699	16	3	1,012	1,240	953	1,142	751	1,796															
Hinsdale	133	75	0	0	0	0	131	75	0	0	125	68	115	60	80	127															
Huerfano	1,841	3,448	4	1	115	115	3,918	1,464	54	2	1,727	3,299	1,489	3,167	1,569	3,773															
Jackson	327	291	0	0	0	0	428	193	1	0	309	256	297	223	242	371															
Jefferson	9,903	9,145	2	1	78	179	12,681	6,567	71	55	9,101	8,692	9,058	8,501	6,528	12,728															
Kiowa	758	659	1	0	2	11	837	569	5	1	702	559	559	553	618	797															
Kit Carson	1,873	1,281	1	0	9	17	1,789	1,377	1	9	1,747	1,036	1,517	986	1,447	1,744															
Lake	838	1,581	2	2	4	75	1,907	567	30	5	763	1,565	748	1,389	606	1,888															
La Plata	2,735	2,536	3	4	4	78	3,366	1,900	33	3	2,473	2,397	2,230	1,955	2,231	3,051															
Larimer	9,813	7,062	5	3	63	83	10,336	6,675	35	27	9,282	6,655	8,382	6,130	7,032	9,910															
Las Animas	3,452	7,586	13	8	18	133	8,182	2,633	271	20	3,452	6,968	2,852	6,707	2,940	8,053															
Lincoln	1,271	1,231	1	0	3	10	1,623	893	3	3	1,226	1,086	1,076	947	1,013	1,474															
Logan	3,223	3,179	4	0	9	33	4,201	2,357	8	6	1,406	1,880	1,768	2,292	3,164	3,264															
Mesa	6,586	8,401	7	5	49	137	10,806	4,374	27	29	6,120	7,964	5,470	7,165	4,823	10,222															
Mineral	144	190	0	0	1	23	255	78	0	0	129	179	127	157	107	227															
Moffat	1,261	1,101	1	5	2	21	1,727	661	3	4	1,197	997	1,120	853	940	1,411															
Montezuma	1,630	1,653	1	2	6	21	1,727	838	19	8	1,385	1,478	1,381	1,252	994	2,241															
Montrose	2,473	2,544	0	3	20	70	3,327	1,669	27	12	2,345	2,303	2,073	2,043	1,712	3,411															
Morgan	3,417	2,912	5	6	8	39	4,092	2,274	14	7	3,348	2,382	2,383	2,452	2,679	3,646															
Otero	4,311	8,640	2	2	16	61	5,531	3,155	38	5	4,154	4,008	3,555	3,677	3,269	5,342															
Ouray	574	461	1	0	7	27	683	258	3	4	524	446	474	369	363	691															
Park	637	505	0	0	1	9	732	443	0	2	604	475	587	426	487	665															
Phillips	1,076	932	1	1	7	32	1,365	677	7	2	1,169	720	962	696	899	1,130															
Pitkin	319	409	0	0	2	13	538	190	6	5	237	396	204	345	189	543															
Prowers	2,505	2,497	3	2	18	22	2,938	2,105	16	11	2,442	2,311	2,060	2,165	2,042	3,020															
Pueblo	12,756	21,637	6	8	62	572	24,924	9,904	336	54	12,911	21,108	11,565	19,931	10,854	24,080															
Rio Blanco	981	752	0	0	1	17	1,082	663	3	0	912	668	832	504	781	961															
Rio Grande	2,049	1,814	2	2	3	6	2,428	1,466	39	5	2,011	1,740	1,723	1,425	1,624	2,294															
Routt	1,492	2,088	6	0	9	56	2,850	807	13	4	1,347	2,007	1,260	1,741	993	2,678															
Saguache	914	1,009	0	0	4	10	1,300	600	12	7	1,238	862	778	717	781	1,128															
San Juan	329	348	1	0	1	21	488	203	12	1	305	364	272	314	250	451															
San Miguel	451	613	0	0	15	10	821	262	4	1	389	600	344	478	273	800															
Sedgwick	1,020	834	0	1	2	10	1,158	697	5	4	1,010	706	901	695	828	1,036															
Summit	292	378	0	0	3	3	493	174	1	2	273	323	269	308	181	486															
Teller	748	779	0	0	2	16	1,136	411	3	4	609	769	553	749	483	1,016															
Washington	1,636	1,304	3	0	4	11	1,750	1,202	4	7	1,550	1,105	1,377	972	1,515	1,426															
Weld	12,446	10,934	11	12	65	171	15,209	8,246	76	38	12,219	9,909	11,270	9,483	9,037	14,226															
Yuma	2,277	1,907	1	5	6	17	2,509	1,577	4	2	2,218	1,923	1,909	1,284	1,971	2,127															
	239,714	267,288	228	214	1,678	6,115	340,719	165,069	2,981	1,352	226,949	245,441	216,816	234,401	168,928	332,752															

	JUSTICES OF THE SUPREME COURT	GOVERNOR	LIEUTENANT GOVERNOR	SECRETARY OF STATE	STATE AUDITOR	STATE TREASURER	ATTORNEY GENERAL	SUPERINTENDENT OF PUBLIC INSTRUCTION		
41	21	4,269	5,550	4,235	5,224	3,719	6,059	103	4,809	5,528
48	2	1,900	2,287	1,637	2,071	1,636	1,859	33	2,168	2,098
41	46	6,446	7,395	6,513	7,069	5,782	8,844	141	7,551	6,796
6	3	419	502	381	373	571	6,677	4	480	474
5	4	1,177	1,092	953	956	1,194	567	4	1,336	1,126
86	95	1,244	1,528	1,036	1,469	1,127	1,216	15	1,542	1,323
4	3	9,725	8,772	8,892	8,484	1,120	1,777	18	9,284	7,991
3	3	1,350	2,024	1,278	1,847	8,120	11,140	495	10,894	11,908
1	10	702	577	621	583	1,135	2,355	19	1,515	1,908
20	12	788	736	808	896	741	720	7	788	508
18	5	1,743	1,526	1,498	1,331	699	941	14	891	717
1	4	941	1,299	941	1,256	1,681	1,774	65	1,940	1,522
2	1	961	934	863	903	958	1,470	11	1,169	1,361
46	5	525	349	427	315	896	919	6	1,096	848
44	5	2,910	2,932	2,599	2,549	483	427	7	591	309
3	3	69,816	85,225	76,118	84,181	2,641	3,017	70	3,213	2,856
3	3	284	362	241	280	2,922	3,011	7	79,650	79,940
57	1	951	678	908	835	59,925	104,143	13	310	389
1	3	729	961	659	593	287	945	8	1,011	661
98	77	1,091	754	965	866	860	840	48	807	940
26	13	15,154	11,870	13,029	11,747	728	1,206	14	802	838
16	16	4,050	3,919	4,407	3,339	1,033	976	14	1,077	1,116
1	5	2,179	2,185	2,040	2,008	11,873	13,506	252	14,638	15,514
16	5	255	255	264	278	4,023	4,644	73	4,096	3,862
0	0	789	635	740	565	2,424	2,709	33	2,335	2,090
54	2	1,012	1,240	953	1,142	213	368	7	295	279
71	3	1,225	88	115	60	620	908	808	688	868
30	3	1,727	3,299	1,489	3,167	833	1,568	27	1,010	1,231
33	5	309	256	297	223	102	97	1	126	84
33	5	9,101	8,692	9,058	8,501	1,693	3,613	58	1,770	1,823
35	1	702	559	559	553	313	346	3	313	339
3	3	1,747	1,086	1,517	986	649	729	10	745	567
27	2	763	1,595	1,748	1,389	572	796	13	1,055	1,079
3	3	2,473	2,397	2,230	1,955	1,691	1,305	39	1,547	1,525
3	6	8,282	6,655	8,382	6,180	659	1,757	41	2,565	2,335
3	3	3,452	6,968	2,852	6,707	8,278	6,536	107	9,312	6,882
27	3	1,226	1,086	1,076	947	3,076	3,479	129	3,249	3,789
0	3	4,406	1,880	2,768	2,292	1,067	1,386	8	1,252	1,101
19	0	6,120	7,964	5,470	7,165	2,694	3,565	30	3,303	2,531
19	8	129	179	127	157	6,679	9,204	124	6,162	7,630
27	8	1,197	997	1,120	853	186	218	4	132	167
14	12	1,385	1,478	1,181	1,252	102	183	20	102	157
38	5	2,345	2,073	2,043	1,712	1,058	1,223	20	1,060	1,285
35	4	3,348	2,382	2,983	2,452	1,198	1,882	19	1,416	1,566
0	4	4,154	3,555	3,677	3,269	2,113	2,818	51	2,429	2,307
3	4	524	446	474	369	3,358	1,597	41	2,429	2,350
16	5	604	475	587	426	3,597	2,407	41	3,294	2,578
36	2	1,169	720	962	696	4,015	4,844	43	4,258	3,996
39	11	2,377	396	204	345	623	390	8	531	466
13	54	2,442	2,311	2,060	2,165	544	468	8	600	477
12	5	12,911	21,108	11,565	19,931	902	1,137	28	1,106	755
3	0	912	668	832	504	271	404	13	241	342
13	4	2,011	1,740	1,723	1,425	2,246	2,667	28	2,529	2,057
12	7	1,347	2,007	1,260	1,741	11,711	22,921	483	12,761	15,884
4	1	928	862	778	717	799	871	6	890	995
1	1	305	364	272	314	1,776	1,718	21	1,978	2,104
5	4	389	600	344	478	1,174	2,386	49	1,369	1,553
1	4	1,010	706	901	695	974	856	10	927	1,007
3	2	273	323	269	308	847	856	13	847	856
4	4	609	769	553	749	351	267	13	311	333
76	38	1,550	1,105	1,377	972	312	424	15	394	422
4	2	12,219	9,909	11,270	9,483	858	979	9	979	788
		2,138	1,523	1,909	2,184	218	276	3	276	348
						517	956	17	609	785
						1,455	1,410	17	1,592	1,721
						10,445	12,497	119	12,101	13,340
						1,922	2,014	20	2,207	2,390
81	1,352	226,949	245,441	216,816	234,401	197,795	297,550	5,702	255,965	229,928

STATE MEASURER	ATTORNEY GENERAL				SUPERINTENDENT OF PUBLIC INSTRUCTION		REGENTS OF THE UNIVERSITY OF COLORADO								
	Homer F. Bedford—D.	Duke W. Dunbar—R.	John W. Metzger—D.	Samuel D. Menin—Prog.	Nettie S. Freed—R.	Essie Bell Marple—D.	H. Vance Austin—D.	Ralph L. Carr—R.	Robert R. Knowles—R.	Frank P. Lynch, Jr.—D.					
19	6,822	4,222	6,059	103	4,809	5,528	5,617	5,037	4,104	4,928	Adams				
36	2,668	1,359	2,380	33	2,168	2,093	2,172	2,362	1,793	1,871	Alamosa				
82	8,844	6,677	7,653	141	7,551	6,796	7,350	7,488	6,506	6,571	Arapahoe				
90	567	407	516	4	480	474	458	515	351	413	Archuleta				
27	1,355	1,216	1,183	15	1,336	1,126	1,049	1,299	1,066	982	Baca				
20	1,777	1,275	1,542	18	1,564	1,323	1,429	1,386	1,176	1,322	Bent				
35	11,140	9,187	9,234	495	10,894	7,991	8,954	11,021	9,215	7,420	Boulder				
26	2,355	1,889	2,045	19	1,515	1,908	1,866	1,608	1,308	1,802	Chaffee				
99	665	720	525	7	788	508	512	755	632	450	Cheyenne				
81	941	792	795	14	891	717	695	957	776	647	Clear Creek				
53	1,825	1,774	1,622	65	1,940	1,522	1,307	2,202	1,617	1,217	Conejos				
83	1,470	1,006	1,413	11	1,169	1,361	1,317	1,073	877	1,279	Costilla				
41	1,079	987	930	6	1,096	848	862	1,104	905	830	Crowley				
25	427	364	364	7	591	309	351	554	452	301	Custer				
83	3,618	3,017	3,011	70	3,213	2,856	2,912	3,120	2,657	2,670	Delta				
45	104,143	73,649	88,791	2,417	79,650	79,940	82,890	86,198	69,889	77,054	Denver				
78	428	287	374	13	310	389	338	340	253	284	Dolores				
60	840	945	707	8	1,011	661	634	1,019	906	561	Douglas				
86	1,206	729	983	48	807	940	927	842	683	827	Eagle				
76	962	1,077	802	14	1,116	838	741	1,133	1,019	637	Elbert				
26	14,127	14,638	12,505	252	15,514	11,875	11,437	16,095	14,502	10,472	El Paso				
05	4,644	4,096	4,083	73	4,428	3,862	3,808	4,393	3,747	3,601	Fremont				
84	2,709	2,335	2,232	33	2,523	2,090	2,108	2,482	2,129	1,790	Garfield				
13	368	261	295	7	297	279	255	337	247	237	Gilpin				
20	908	808	688	7	868	649	624	918	718	544	Grand				
33	1,568	1,010	1,309	27	1,135	1,231	1,210	1,237	1,011	1,062	Gunnison				
02	97	126	72	1	120	84	66	128	117	63	Hinsdale				
93	3,613	1,770	3,431	58	1,823	3,149	3,200	2,064	1,625	3,132	Huerfano				
65	346	313	274	3	339	254	256	343	299	226	Jackson				
80	10,859	9,367	9,040	187	9,789	8,317	8,651	10,279	9,081	7,807	Jefferson				
49	729	745	593	10	773	567	573	727	656	530	Kiowa				
91	1,305	1,863	1,055	13	1,927	1,079	1,105	1,851	1,560	889	Kit Carson				
59	1,757	796	1,547	39	856	1,525	1,451	995	744	1,392	Lake				
56	2,874	2,565	2,444	41	2,693	2,335	2,266	2,782	2,332	2,085	La Plata				
78	8,317	9,312	6,882	107	10,037	6,189	6,735	9,947	8,856	5,734	Larimer				
47	7,716	3,249	7,161	129	3,789	6,695	6,771	3,963	3,156	6,453	Las Animas				
67	1,386	1,252	1,133	8	1,319	1,101	1,058	1,359	1,135	987	Lincoln				
94	3,565	3,303	2,771	30	3,570	2,531	3,344	2,902	4,169	1,626	Logan				
27	9,204	6,162	8,260	124	7,076	7,630	8,205	6,210	5,662	7,611	Mesa				
02	218	132	183	4	157	167	158	172	126	146	Mineral				
58	1,223	1,180	1,060	20	1,285	1,002	1,051	1,319	1,047	818	Moffat				
98	1,882	1,416	1,577	19	1,471	1,566	1,369	1,639	1,238	1,244	Montezuma				
13	2,818	2,429	2,345	51	2,534	2,307	2,223	2,641	2,190	1,892	Montrose				
52	3,315	3,294	2,691	41	3,741	2,250	2,433	3,678	3,085	2,032	Morgan				
56	4,844	4,258	3,996	43	4,729	3,578	3,963	4,510	3,848	3,623	Otero				
58	548	531	466	8	563	437	414	603	492	359	Ouray				
44	600	637	494	8	653	477	468	660	590	431	Park				
24	1,031	1,106	755	28	1,163	737	871	1,098	1,010	634	Phillips				
16	477	241	414	13	359	342	372	307	239	331	Pitkin				
46	2,667	2,529	2,290	28	2,753	2,057	2,168	2,639	2,264	1,941	Prowers				
11	22,921	12,761	20,763	483	18,890	15,884	19,887	15,080	12,229	19,753	Pueblo				
99	871	890	749	6	995	660	612	998	886	536	Rio Blanco				
76	2,078	1,978	1,794	21	2,104	1,651	1,525	2,242	1,867	1,454	Rio Grande				
74	2,386	1,369	2,062	49	1,553	1,924	1,871	1,608	1,338	1,689	Routt				
47	1,022	927	885	10	1,007	856	786	1,029	838	743	Saguache				
67	424	311	365	13	333	347	316	394	305	283	San Juan				
12	730	394	606	15	422	602	529	511	365	461	San Miguel				
58	970	979	788	9	1,039	722	1,100	916	777	612	Sedgwick				
18	424	276	348	3	309	324	299	317	265	294	Summit				
17	956	609	785	17	679	718	714	771	555	640	Teller				
55	1,410	1,592	1,112	17	1,721	1,087	1,119	1,647	1,417	951	Washington				
45	12,497	12,101	10,217	119	13,340	9,206	10,039	13,167	11,685	8,695	Weld				
22	2,014	2,207	1,559	20	2,390	1,452	1,570	2,301	1,927	1,243	Yuma				
95	297,550	229,854	255,063	5,702	255,965	229,928	241,361	259,272	218,514	219,112					

ABSTRACT OF VOTES CAST AT A GENERAL ELECTION HELD ON TUESDAY, NOVEMBER 2ND, A. D. 1948, FOR INITIATED AND REFERRED MEASURES

	NO. 1 REORGANIZATION OF THE STATE DEPART- MENT OF EDUCATION		NO. 2 PARI MUTUEL LAW		NO. 3 LOCAL OPTION AMENDMENT		N. 4 \$55.00 OLD AGE PENSION AMENDMENT	
	Yes	No	Yes	No	Yes	No	Yes	No
Adams	4,138	2,655	5,243	3,186	2,382	6,986	3,407	5,936
Alamosa	1,711	969	1,901	1,293	1,023	2,760	1,321	2,521
Arapahoe	7,918	3,313	7,655	5,531	3,448	10,006	4,760	9,065
Archuleta	207	260	325	239	133	639	312	568
Baca	607	685	850	973	1,212	961	821	1,299
Bent	963	976	1,015	1,254	1,018	1,571	786	1,937
Boulder	11,020	4,603	8,475	8,647	5,458	13,113	7,309	11,330
Chaffee	1,455	1,134	1,760	1,100	547	2,702	782	2,541
Cheyenne	413	343	478	468	325	717	356	752
Clear Creek	782	387	877	459	274	1,162	525	947
Conejos	1,037	655	1,425	821	802	2,099	979	2,018
Costilla	567	276	735	253	308	1,662	354	1,700
Crowley	579	698	919	630	671	1,025	576	1,225
Custer	283	251	486	210	136	648	233	560
Delta	2,620	1,578	2,429	2,548	2,023	3,886	1,829	4,014
Denver	94,605	39,411	85,808	64,457	32,616	118,571	58,735	97,380
Dolores	208	141	274	218	209	368	246	319
Douglas	571	549	908	485	339	1,112	621	825
Eagle	633	475	790	518	275	1,258	447	1,059
Elbert	523	795	816	751	629	1,083	715	993
El Paso	11,409	10,866	13,296	11,882	7,959	18,073	10,052	16,649
Fremont	2,976	2,596	3,831	2,984	2,319	5,652	2,027	5,645
Garfield	2,065	1,114	2,315	1,316	862	3,294	1,310	2,873
Gilpin	174	197	316	155	63	458	140	390
Grand	636	404	851	454	272	1,085	566	809
Gunnison	983	640	1,198	698	320	1,814	843	1,305
Hinsdale	75	53	105	47	40	122	85	88
Huerfano	1,405	967	2,082	770	582	4,084	835	3,926
Jackson	287	108	332	147	129	362	268	243
Jefferson	10,428	4,199	10,137	6,953	3,999	13,491	6,673	11,100
Kiowa	449	387	531	542	571	626	448	745
Kit Carson	674	969	1,013	1,101	1,028	1,668	887	1,566
Lake	1,069	479	1,191	602	276	1,888	668	1,406
La Plata	2,049	1,191	2,610	1,423	1,023	3,708	1,772	2,947
Larimer	8,539	4,058	6,221	8,462	6,328	9,332	6,421	9,401
Las Animas	4,368	1,884	5,213	2,010	1,714	7,853	2,338	7,527
Lincoln	631	1,094	976	1,009	636	1,494	672	1,465
Logan	2,302	1,935	2,372	2,788	2,212	3,526	2,426	3,339
Mesa	7,394	3,613	7,029	5,341	4,109	9,833	4,396	9,610
Mineral	97	80	134	80	46	200	57	204
Moffat	805	739	952	859	450	1,707	768	1,288
Montezuma	1,051	765	1,399	909	630	1,887	991	1,549
Montrose	1,816	1,323	2,054	1,887	1,627	3,025	1,661	2,913
Morgan	2,888	1,533	2,791	2,377	2,078	3,360	2,090	3,529
Otero	3,845	1,891	3,327	3,649	3,398	4,434	3,042	4,719
Ouray	366	279	468	309	184	697	326	546
Park	441	300	627	277	149	849	336	677
Phillips	684	579	702	870	784	1,017	786	1,001
Pitkin	261	158	299	210	92	551	229	411
Prowers	1,879	1,532	2,149	1,958	1,873	2,662	1,433	3,174
Pueblo	17,444	9,834	21,595	8,761	7,697	24,968	10,441	22,474
Rio Blanco	512	490	871	410	225	1,207	615	761
Rio Grande	1,476	873	1,257	1,460	1,053	2,310	1,386	2,097
Routt	1,307	815	1,517	1,134	716	2,333	1,107	1,959
Saguache	637	417	768	537	401	1,260	583	1,135
San Juan	190	191	308	167	73	515	205	355
San Miguel	289	316	480	271	160	730	309	577
Sedgwick	680	473	809	630	541	1,112	621	975
Summit	219	139	321	157	81	478	204	362
Teller	488	441	869	333	200	1,143	329	1,069
Washington	803	1,017	1,126	1,075	896	1,583	971	1,473
Weld	9,835	5,824	7,607	10,424	7,469	13,757	8,160	12,464
Yuma	1,334	1,137	1,153	1,823	1,626	1,854	1,440	1,977
	238,100	128,054	238,371	183,292	120,799	334,331	166,031	295,712



CONGRESSMAN, FIRST CONGRESSIONAL DISTRICT

County	John A. Carroll —D		Christopher F. Cusack —R	
	P. E.	G. E.	P. E.	G. E.
Denver	45,797	106,096	25,624	57,541

CONGRESSMAN, SECOND CONGRESSIONAL DISTRICT

County	William S. Hill —R		George L. Bickel —D	
	P. E.	G. E.	P. E.	G. E.
Adams	1,373	4,669	1,167	5,918
Arapahoe	1,615	7,017	1,958	7,594
Boulder	2,525	9,061	2,231	10,330
Cheyenne	479	780	156	531
Clear Creek	294	888	254	735
Douglas	382	1,049	261	647
Elbert	453	1,183	298	750
Gilpin	84	298	168	293
Jefferson	3,992	9,344	2,354	9,163
Kit Carson	899	1,770	219	1,311
Larimer	3,070	9,730	1,343	6,854
Lincoln	617	1,300	444	1,142
Logan	1,147	3,386	780	2,901
Morgan	1,634	3,426	746	2,763
Phillips	429	893	168	1,094
Sedgwick	210	1,078	129	738
Washington	426	1,686	237	1,165
Weld	3,976	12,285	2,318	10,728
Yuma	523	2,025	625	1,922
	24,128	71,868	15,856	66,579

CONGRESSMAN, THIRD CONGRESSIONAL DISTRICT

County	J. Edgar Chenoweth —R		John H. Marsalis —D	
	P. E.	G. E.	P. E.	G. E.
Alamosa	386	2,166	853	2,169
Baca	530	1,491	344	1,068
Bent	349	1,442	376	1,465
Conejos	1,158	1,921	405	1,602
Costilla	273	1,030	467	1,419
Crowley	347	1,117	315	869
Custer	350	593	154	313
El Paso	5,385	16,613	3,131	11,157
Fremont	1,719	4,586	1,409	3,851
Huerfano	390	1,997	1,120	3,291
Kiowa	138	816	97	566
Las Animas	998	5,074	3,391	6,000
Mineral	48	172	84	156
Otero	1,746	4,623	963	3,854
Prowers	836	2,728	567	2,219
Pueblo	4,302	12,763	8,117	22,102
Rio Grande	460	2,353	308	1,512
Saguache	172	1,073	135	791
Teller	160	754	630	710
	19,747	63,312	22,866	65,114

CONGRESSMAN, FOURTH CONGRESSIONAL DISTRICT

County	Robert F. Rockwell —R		Wayne N. Aspinall —D	
	P. E.	G. E.	P. E.	G. E.
Archuleta	94	559	113	440
Chaffee	381	1,488	613	1,997
Delta	1,099	3,169	929	3,242
Dolores	143	393	206	357
Eagle	230	861	378	946
Garfield	811	2,529	639	2,235
Grand	258	860	140	688
Gunnison	232	1,206	410	1,257
Hinsdale	82	142	45	66
Jackson	180	368	111	236
Lake	179	966	759	1,487
La Plata	958	2,939	644	2,258
Mesa	1,676	5,313	2,139	9,735
Moffat	581	1,430	392	891
Montezuma	576	1,844	538	1,348
Montrose	1,046	2,810	727	2,242
Ouray	83	601	86	424
Park	183	644	152	491
Pitkin	66	390	257	352
Rio Blanco	392	1,054	203	648
Routt	486	1,441	908	2,161
San Juan	72	369	83	321
San Miguel	131	518	231	543
Summit	115	312	145	330
	10,054	32,206	10,848	34,695

STATE SENATOR, FIRST SENATORIAL DISTRICT, DENVER COUNTY

	P. E.	G. E.
Bishop, Neal D.—D	40,273	98,879
Blake, Claude W.—R	25,249	69,435
Bresnahan, C. A.—R	17,288	
Dunklee, Donald P.—D	40,646	98,574
Evans, George T.—R	20,111	60,719
*Fritts, C. A.—R	19,336	
Henry, Lawrence M.—D	40,501	96,170
Jacobson, Olof H.—R	21,476	62,326
Mazzula, Fred M.—R	6,651	49,719
McNichols, Stephen L. R.—D	41,466	94,994
Alberg, Gus—Prog		2,078
Payne, Mildora—Prog		1,724
Trujillo, Robert—Com		911
Wiley, Charles R.—Prog		1,798

*Withdrew after Primary Election.

STATE SENATOR, SECOND SENATORIAL DISTRICT

County	Peter Culig, Jr. —D		W. I. Sanford —R	
	P. E.	G. E.	P. E.	G. E.
Pueblo	7,515	21,587	3,961	12,975

STATE SENATOR, THIRD SENATORIAL DISTRICT

County	Vernon A. Cheever —R		William R. Franklin —D	
	P. E.	G. E.	P. E.	G. E.
El Paso	5,096	16,065	2,932	11,315

STATE SENATOR, FOURTH SENATORIAL DISTRICT

County	Ben Veltri —D		L. T. Winger, Sr. —R	
	P. E.	G. E.	P. E.	G. E.
Las Animas	3,611	6,909	965	4,059

STATE SENATOR, FIFTH SENATORIAL DISTRICT

County	Wm. G. Gambill —D		Theo. G. Lashley —R	
	P. E.	G. E.	P. E.	G. E.
Boulder	2,296	10,845	2,577	8,089

STATE SENATOR, SEVENTH SENATORIAL DISTRICT

County	Wm. Albion Carlson —R	
	P. E.	G. E.
Weld	3,604	15,206

STATE SENATOR, EIGHTH SENATORIAL DISTRICT

County	Harold Ward Gardner —R		O. A. Saunders —R		Robert F. Metzler —D		Ed Moder —D	
	P. E.	G. E.	P. E.	G. E.	P. E.	G. E.	P. E.	G. E.
Douglas	231	219	1,050	291	605			
Jefferson	1,944	2,459	9,550	2,247	9,088			
	2,175	2,678	10,600	2,538	9,693			

STATE SENATOR, NINTH SENATORIAL DISTRICT

County	Lawrence Oliver —D		Edwin A. Rogers —R		C. L. Canda, Jr. —R	
	P. E.	G. E.	P. E.	G. E.	P. E.	G. E.
Custer	148	364	250	566	201	
Fremont	1,538	4,228	1,307	4,073	554	
	1,686	4,592	1,557	4,639	755	

STATE SENATOR, ELEVENTH SENATORIAL DISTRICT

County	Daniel I. J. Thornton —R	
	P. E.	G. E.
Delta	1,019	4,586
Gunnison	227	1,875
Hinsdale	78	165
	1,324	6,626

STATE SENATOR, THIRTEENTH SENATORIAL DISTRICT

County	Charles P. Murphy —R	
	P. E.	G. E.
Grand	255	1,221
Jackson	187	556
Moffat	545	1,815
Rio Blanco	339	1,288
Routt	467	2,401
	1,793	7,281

STATE SENATOR, NINETEENTH SENATORIAL DISTRICT

County	T. H. Akin —D		Tom Kimball —R		Harry Rogers —R	
	P. E.	G. E.	P. E.	G. E.	P. E.	G. E.
Archuleta	105	413	56	537	47	
La Plata	669	2,148	803	3,045	301	
Montezuma	657	1,979	76	1,227	574	
San Juan	83	279	67	418	14	
	1,514	4,819	1,002	5,227	936	

STATE SENATOR, TWENTY-FIRST SENATORIAL DISTRICT

County	Robert A. Theobald —D		Roy Burkett —R	
	P. E.	G. E.	P. E.	G. E.
Eagle	350	1,106	207	651
Garfield	592	2,621	762	1,989
Lake	811	1,677	178	760
Pitkin	276	468	55	227
Summit	146	313	115	356
	2,175	6,185	1,317	3,983

STATE SENATOR, TWENTY-SECOND SENATORIAL DISTRICT

County	La Roy H. Purdy —D		Richard H. Simon —R	
	P. E.	G. E.	P. E.	G. E.
Arapahoe	1,851	7,481	1,488	6,899
Elbert	277	779	403	1,084
	2,128	8,260	1,891	7,983

STATE SENATOR, TWENTY-THIRD SENATORIAL DISTRICT

County	James B. Ryan —R	
	P. E.	G. E.
Crowley	328	1,302
Otero	1,675	6,039
	2,003	7,341

STATE SENATOR, TWENTY-FOURTH SENATORIAL DISTRICT

County	Clifford J. Gobble —D		Willard B. Preston —R	
	P. E.	G. E.	P. E.	G. E.
Adams	1,229	6,187	1,326	4,232
Morgan	664	2,549	1,508	3,502
	1,893	8,736	2,834	7,734

REPRESENTATIVES, THIRTY-SEVENTH GENERAL ASSEMBLY

ADAMS COUNTY

	P. E.	G. E.
Wells, J. Wm.—D	1,170	5,731
Krogh, Alfred—R	1,306	4,755

ALAMOSA AND COSTILLA COUNTIES

County	Louis F. Higel —D		Floyd W. Skelton —R	
	P. E.	G. E.	P. E.	G. E.
Alamosa	970	2,586	1,818	
Costilla	463	1,421	1,031	
	1,433	4,007	2,849	

ARAPAHOE AND ELBERT COUNTIES

County	Robert D. Blackman —D		I. F. Thorne —D		A. O. Hill —R		B. T. Worrall —R		Dewey Taft Lin-Jef G. E.	
	P. E.	G. E.	P. E.	G. E.	P. E.	G. E.	P. E.	G. E.	P. E.	G. E.
Arapahoe	1,753	7,835	1,592	6,944	1,513	6,546	1,306	5,459	1,210	
Elbert	259	629	231	520	369	1,079	441	1,301	185	
	2,012	8,464	1,823	7,464	1,882	7,625	1,747	6,760	1,395	

ARCHULETA AND CONEJOS COUNTIES

County	Earl H. Haynie —D		S. T. Parsons —R	
	P. E.	G. E.	P. E.	G. E.
Archuleta	103	490	86	495
Conejos	442	1,435	1,291	2,539
	545	1,925	1,377	3,034

BACA COUNTY

County	Warren O. Brown —R	
	P. E.	G. E.
Baca	521	2,036

BENT AND KIOWA COUNTIES

County	H. B. Amyx —D		Oakley Wade —R	
	P. E.	G. E.	P. E.	G. E.
Bent	370	1,180	341	1,729
Kiowa	109	802	130	607
	479	1,982	471	2,336

BOULDER COUNTY

County	P. E.	G. E.
Paddock, William L.—D	2,291	10,806
Steele, Leslie R.—R	2,476	10,862
Faulkner, Dean M.—R	2,414	10,674
Hedgecock, A. Glenn—Prog		2,122

CHAFFEE AND LAKE COUNTIES

County	Frank E. Kendrick, Jr. —D		Frank Fehling —R	
	P. E.	G. E.	P. E.	G. E.
Chaffee	1,776		321	1,763
Lake	1,530		181	948
	3,306		502	2,711

CHEYENNE AND LINCOLN COUNTIES

County	John E. Jacobs —D		V. H. Johnson —R	
	P. E.	G. E.	P. E.	G. E.
Cheyenne	171	666	485	692
Lincoln	450	1,188	588	1,183
	621	1,854	1,073	1,875

CLEAR CREEK, EAGLE, GILPIN, PITKIN AND SUMMIT COUNTIES

County	Frank P. Conroy —R		Ellis P. Lupton —D	
	P. E.	G. E.	P. E.	G. E.
Clear Creek	270	982	255	982
Eagle	204	698	341	1,084
Gilpin	81	244	174	345
Pitkin	51	264	257	432
Summit	114	256	155	396
	720	2,115	1,182	3,239

CROWLEY AND OTERO COUNTIES

County	James G. McConnell —D		Henry Bledsoe —R		Arlie M. Ward —R	
	P. E.	G. E.	P. E.	G. E.	P. E.	G. E.
Crowley	329	1,159	288	1,031	313	1,192
Otero	848	4,135	1,599	5,520	1,467	4,344
	1,177	5,294	1,887	6,551	1,780	5,536

CUSTER AND FREMONT COUNTIES

County	Curtis R. Hanawalt —D		Leonard M. Bentley —R		A. H. Sparks —R
	P. E.	G. E.	P. E.	G. E.	P. E.
Custer	144	326	218	573	179
Fremont	1,501	4,238	995	4,062	901
	1,645	4,564	1,213	4,635	1,080

DELTA COUNTY

County	Mark R. Clay —R	
	P. E.	G. E.
Delta	1,068	4,779

CITY AND COUNTY OF DENVER

County	P. E.	G. E.
Abernethy, O. A.—D	28,963	88,612
Anderson, William Ward—R	19,263	62,196
Armatas, N. Peter—D	11,587	
Arthur, L. James—R	18,334	57,928
Basil, George—D	18,979	
Bennett, Charles E.—D	27,471	93,542
Best, Whitman—R	21,038	67,966
Bezoff, Ben—D	28,239	94,301
Blake, Milton J.—R	22,131	68,012
Brewer, Howard J.—D	21,936	
Burch, Palmer L.—R	19,315	63,621
Chapman, Marshall Yale—R	14,003	
Chrysler, Harry F.—R	24,746	69,118
Cobb, Norman E.—D	31,140	93,266
Conrad, John E.—R	18,215	67,317
Cooke, Ellsworth E.—R	16,609	57,572
Crofts, Alfred—D	20,987	
Crowley, Clem—D	34,933	91,825
Davis, Vera Ames—D	20,933	
Eaton, Samuel J.—D	24,994	82,728
Gabbert, Noble V.—R	13,330	
Gableman, Cyprena Turcotte—D	8,280	
Gibson, Otis J.—R	19,606	65,379
Hamburg, Alfred J.—D	23,822	80,452
Hays, Frank L. Jr.—R	21,108	70,059
Jacobucci, Jean John—D	18,402	
Jennnigs, Henry L.—D	22,731	
Kelley, Andrew D.—D	31,422	81,331
Kokenzie, Henry F.—D	18,486	
Kramer, Shirley M.—D	25,910	80,019
Lewis, William A.—R	17,267	66,478
Lindquist, Oscar A.—R	18,809	66,604
Lloyd, Thomas L.—R	15,361	59,090
Macdonald, John D.—D	25,845	82,827
Maker, Joseph E.—R	10,397	
Mann, Earl W.—R	21,241	69,093
Milliken, Charles R.—R	21,826	63,979
Morton, James A.—R	14,176	
McCarthy, Thomas E.—R	15,173	
O'Connell, Max H.—R	10,658	
O'Neill, Francis P.—D	27,620	78,912
Pile, Roscoe—D	26,809	85,749
Quiatt, Marshall—D	31,324	89,182
Radetsky, James Bernard—D	26,783	88,985
Roth, Herrick S.—D	26,976	83,392
Schalow III, Berthold E.—R	5,755	
Collings, Lillian Grace—Const. O		1,436
Gutmer, Joseph—Prog		2,239
Rogers, Tracy Roy—Com		1,079
Sena, Alfonso—Prog		2,051
Stotts, Edna—Prog		2,055

DOLORES, MONTEZUMA AND SAN MIGUEL COUNTIES

County	Elizabeth E. Pellet —D		Homer H. Norton —R	
	P. E.	G. E.	P. E.	G. E.
Dolores	272	489	130	286
Montezuma	657	1,763	523	1,493
San Miguel	257	788	112	290
	1,186	3,040	765	2,069

DOUGLAS, PARK AND TELLER COUNTIES

County	H. N. Archambault —D		Homer E. Ira —R	
	P. E.	G. E.	P. E.	G. E.
Douglas	282	808	321	876
Park	139	546	144	585
Teller	662	961	139	454
	1,083	2,315	604	1,915

EL PASO COUNTY

County	P. E.	G. E.
Chamberlin, Harold J.—D	2,811	13,913
Nelson, Carroll A.—R	4,743	20,640
Phillips, John O.—R	4,685	20,405
Weissenfuh, Carl K.—R	4,469	15,616

GARFIELD AND RIO BLANCO COUNTIES

County	Mary L. Bell —D		Frank V. Kennedy —R	
	P. E.	G. E.	P. E.	G. E.
Garfield	585	2,310	776	2,036
Rio Blanco	201	643	386	1,094
	786	2,953	1,162	3,130

GRAND, MOFFAT AND ROUTT COUNTIES

County	Pat Magill, Jr. —D		Carl R. Taussig —R	
	P. E.	G. E.	P. E.	G. E.
Grand	152	786	257	770
Moffat	400	1,257	538	1,047
Route	960	2,588	467	1,030
	1,512	4,631	1,262	2,847

GUNNISON, HINSDALE AND SAGUACHE COUNTIES

County	Montana F. Smith —D		Rocco Santarelli —R	
	P. E.	G. E.	P. E.	G. E.
Gunnison	23	1,441	219	992
Hinsdale	15	146	71	65
Saguache	32	1,198	151	697
	70	2,785	441	1,754

HUERFANO COUNTY

County	P. E.	G. E.
Abe, Richard—D	1,386	3,518
Johnson, H. W. W. (Bill)—R	388	1,835

JACKSON AND LARIMER COUNTIES

County	E. J. (Ted) Herring —R		Victor Hanson —R		A. J. Becksted —R
	P. E.	G. E.	P. E.	G. E.	P. E.
Jackson	112	490	197	546	35
Larimer	2,386	13,283	2,251	13,191	1,394
	2,498	13,773	2,448	13,737	1,429

JEFFERSON COUNTY

County	P. E.	G. E.
Browne, John R.—R	2,733	9,073
Duke, Richard H.—R	1,526
Tinsley, Mansur—D	2,271	9,336

KIT CARSON COUNTY

County	P. E.	G. E.
Rhoades, Harley—R	800	1,905
Yersin, Bill—D	251	1,304

LAS ANIMAS COUNTY

County	P. E.	G. E.
Cordova, Tony—R	750	2,748
Horsman, John—D	3,353	7,777
Johnson, John—D	3,446	7,830
Salas, U. A. (Lee)—R	738	2,693

LA PLATA AND SAN JUAN COUNTIES

County	Charles E. Armstrong —D		R. Bruce Sullivan —R	
	P. E.	G. E.	P. E.	G. E.
La Plata	692	2,330	929	2,814
San Juan	88	404	77	297
	780	2,734	1,006	3,111

LOGAN COUNTY

County	Harley N. Beery —D		T. E. Breezley —R	
	P. E.	G. E.	P. E.	G. E.
Logan	860	3,282	1,140	3,076

MESA COUNTY

County	P. E.	G. E.
Barker, Tom—D	8,090
Beede, Wayne—D	1,674	7,571
Evans, Jack—R	1,541	7,022
Porter, Robert M.—R	1,338	5,713
Reeds, Frank H.—D	1,872

MINERAL AND RIO GRANDE COUNTIES

County	Elizabeth A. Conour —D		Jas. E. Ward —R	
	P. E.	G. E.	P. E.	G. E.
Mineral	88	181	45	148
Rio Grande	281	1,554	457	2,316
	369	1,735	502	2,464

MONTROSE AND OURAY COUNTIES

County	Jerry Foster —D		John L. Stivers —R	
	P. E.	G. E.	P. E.	G. E.
Montrose	721	2,677	990	2,276
Ouray	85	539	74	482
	806	3,216	1,064	2,758

MORGAN COUNTY

County	P. E.	G. E.
Ott, Millicent—D	687	2,527
Schooley, O. B.	1,504	3,540

PHILLIPS AND SEDGWICK COUNTIES

County	Merle Hiatt —D		Roy E. Owens —R	
	P. E.	G. E.	P. E.	G. E.
Phillips	158	688	425	1,278
Sedgwick	126	882	201	958
	284	1,570	626	2,236

PROWERS COUNTY

	P. E.	G. E.
Smartt, Hackett—D.....	612	3,105
Strain, Cora R.—R.....	823	1,887

PUEBLO COUNTY

	P. E.	G. E.
Craddock, Adeline B.—D.....	4,095	
Dameron, T. H.—D.....	6,022	22,009
Haynie, Gertrude C.—D.....	3,437	
Hobbs, R. F.—D.....	4,239	19,837
Hudspeth, Elizabeth—R.....	3,338	13,982
Husted, Frank—R.....	3,386	12,933
Leach, Richard F.—R.....	3,333	12,750
Long, Ward B.—R.....	2,067	
Taylor, Robert W.—R.....	3,745	13,364
Tyler, William H.—D.....	4,848	19,784
Utt, James A.—D.....	4,103	
Welsh, Wm. R., Jr.—D.....	4,348	19,887

WASHINGTON COUNTY

	Horace H. Holt		Roy R. Rowland	
County	P. E.	G. E.	P. E.	G. E.
Washington	398	1,588	263	1,255

WELD COUNTY

	P. E.	G. E.
Armstrong, Timothy H.—D.....	1,990	11,944
Christensen, Henry H.—D.....	1,994	10,732
DePaolo, Nick—D.....	1,904	8,624
Houtchens, Rodger I.—D.....	2,008	11,806
Kent, Elsie A.—R.....	3,584	10,438
Lamb, Allen B.—R.....	3,580	11,314
Ogilvie, James S.—R.....	3,648	11,936
Parham, James A.—R.....	3,554	10,495

YUMA COUNTY

	C. J. Bennett		Walter R. Stalker	
County	P. E.	G. E.	P. E.	G. E.
Yuma	555	1,599	502	2,288

DISTRICT JUDGES

FIRST DISTRICT

	Harold H. Davies		Osmer E. Smith	
County	P. E.	G. E.	P. E.	G. E.
Adams	1,218	7,321	1,218	6,525
Arapahoe	1,494	11,299	1,391	9,761
Clear Creek	246	1,164	248	1,134
Gilpin	67	407	78	362
Jefferson	3,203	13,532	3,502	12,663
	6,228	33,723	6,437	30,445

SECOND DISTRICT

	P. E.	G. E.
Black, William A.—R.....	23,788	80,746
Brewster, Guy K.—R.....	20,244	58,586
Cook, Joseph E.—R.....	25,137	89,660
Day, Edward C.—D.....	40,928	86,529
Frantz, Albert T.—D.....	40,266	68,283
Hickey, Frank E.—R.....	19,328	59,233
Knauss, Francis J.—R.....	25,752	77,018
Larwill, Langdon H.—R.....	15,016	
Lindsay, Henry Sherman—D.....	41,950	102,770
Miles, Floyd F.—D.....	40,612	73,565
Neff, Joseph D.—R.....	20,356	58,875
Sabin, James N.—R.....	18,513	
Shepherd, Ellett N.—D.....	40,560	76,168
Steele, Robert W.—D.....	41,742	101,264
Walsh, Joseph J.—D.....	42,134	93,984
Webster, Harold M.—R.....	24,185	66,397

SECOND DISTRICT TO FILL VACANCY

	G. E.	
	P. E.	G. E.
Doyle, William E.—D.....		80,801
Ruston, Paul A.—R.....		62,315

THIRD DISTRICT

	John L. East		William B. Nicolas	
County	P. E.	G. E.	P. E.	G. E.
Huerfano	1,412	3,473	383	1,882
Las Animas	3,631	8,275	895	2,519
	5,043	11,748	1,278	4,401

FOURTH DISTRICT

	John M. Meikle		G. Russell Miller	
County	P. E.	G. E.	P. E.	G. E.
Douglas	270	852	320	1,041
Elbert	265	1,079	403	1,257
El Paso	3,174	18,869	5,076	19,386
Kit Carson	215	1,485	790	1,930
Lincoln	453	1,384	567	1,441
Teller	678	1,014	151	713
	5,055	24,683	7,307	25,768

FIFTH DISTRICT

	William H. Luby	
County	P. E.	G. E.
Eagle	234	1,504
Lake	190	1,889
Summit	124	525
	548	3,918

SIXTH DISTRICT

	John H. Galbreath		James N. Noland	
County	P. E.	G. E.	P. E.	G. E.
Archuleta	90	614	118	445
Dolores	115	201	257	534
La Plata	864	1,782	769	3,506
Montezuma	484	847	671	2,346
San Juan	75	253	100	449
	1,628	3,697	1,915	7,279

SIXTH DISTRICT TO FILL VACANCY

	John H. Galbreath		James N. Noland	
County	P. E.	G. E.	P. E.	G. E.
Archuleta		21	111	23
Dolores		8	239	21
La Plata		110	712	671
Montezuma		42	614	128
San Juan		1	93	6
		182	1,769	849

SEVENTH DISTRICT

	Dan H. Hughes		Paul L. Littler	
County	P. E.	G. E.	P. E.	G. E.
Delta	761	3,623	986	3,438
Gunnison	356	1,500	200	1,201
Hinsdale	45	88	74	112
Mesa	1,974	9,142	1,626	8,820
Montrose	738	2,986	1,009	2,932
Ouray	78	582	75	556
San Miguel	233	703	111	504
	4,185	18,624	4,081	17,563

ABSTRACT OF VOTES CAST

EIGHTH DISTRICT

County	George H. Bradfield —R		Claude C. Coffin —R	
	P. E.	G. E.	P. E.	G. E.
Boulder	2,497	14,696	2,480	13,851
Jackson	148	538	142	437
Larimer	2,823	13,253	2,850	13,193
Weld	3,740	18,041	3,512	16,242
	<u>9,208</u>	<u>46,528</u>	<u>8,984</u>	<u>43,723</u>

NINTH DISTRICT

County	John R. Clark —R	
	P. E.	G. E.
Garfield	788	3,424
Pitkin	70	506
Rio Blanco	372	1,414
	<u>1,230</u>	<u>5,344</u>

TENTH DISTRICT

County	Harry Leddy —D		J. Arthur Phelps —R	
	P. E.	G. E.	P. E.	G. E.
Crowley	325	1,266	330	1,369
Otero	931	5,071	1,658	5,720
Pueblo	7,472	25,371	3,971	20,311
	<u>8,728</u>	<u>31,708</u>	<u>5,959</u>	<u>27,400</u>

ELEVENTH DISTRICT

County	Jos. D. Blunt —R	
	P. E.	G. E.
Chaffee	300	2,437
Custer	351	718
Fremont	1,765	6,226
Park	165	833
	<u>2,581</u>	<u>10,264</u>

TWELFTH DISTRICT

County	Joseph H. Thomas —R	
	P. E.	G. E.
Alamosa	393	3,055
Concejos	1,282	2,586
Costilla	271	1,318
Mineral	48	242
Rio Grande	435	2,876
Saguache	164	1,316
	<u>2,593</u>	<u>11,393</u>

THIRTEENTH DISTRICT

County	Raymond L. Sauter —R		George C. Twombly —R	
	P. E.	G. E.	P. E.	G. E.
Logan	1,142	5,351	952	4,469
Morgan	1,270	4,132	1,597	5,009
Phillips	393	1,515	348	1,322
Sedgwick	192	1,359	174	1,176
Washington	370	2,114	353	1,828
Yuma	478	2,762	447	2,669
	<u>3,845</u>	<u>17,233</u>	<u>3,871</u>	<u>16,473</u>

FOURTEENTH DISTRICT

County	Addison M. Gooding —D	
	P. E.	G. E.
Grand	132	1,164
Moffat	396	1,849
Routt	972	3,124
	<u>1,500</u>	<u>6,137</u>

FOURTEENTH DISTRICT TO FILL VACANCY

County	Addison M. Gooding —D	
	P. E.	G. E.
Grand	123	1,086
Moffat	356	1,736
Routt	836	2,884
	<u>1,315</u>	<u>5,706</u>

FIFTEENTH DISTRICT

County	Alfred A. Arraj —R		Averill C. Johnson —R		Alfred Todd —D	
	P. E.	G. E.	P. E.	G. E.	P. E.	G. E.
Baca	562	1,801			78	327
Bent	59	1,292			346	396
Cheyenne	169	718			324	155
Kiowa	78	703			75	100
Prowers	530	2,703			389	556
	<u>1,398</u>	<u>7,217</u>			<u>1,212</u>	<u>1,534</u>
						<u>5,889</u>

DISTRICT ATTORNEYS

FIRST DISTRICT

County	Clement R. Hackethal —D		Martin C. Molholm —R	
	P. E.	G. E.	P. E.	G. E.
Adams	1,103	6,074	1,286	4,129
Arapahoe	1,863	7,910	1,522	6,355
Clear Creek	272	1,029	280	614
Gilpin	200	360	72	222
Jefferson	2,191	9,368	3,885	9,304
	<u>5,629</u>	<u>24,741</u>	<u>7,045</u>	<u>20,604</u>

SECOND DISTRICT

County	Bert M. Keating —D		Richard H. Shaw —R	
	P. E.	G. E.	P. E.	G. E.
Denver	43,860	93,794	26,806	69,873

THIRD DISTRICT

County	O. F. Adams, Jr. —R		John N. Mabry —D	
	P. E.	G. E.	P. E.	G. E.
Huerfano	361	2,273	1,323	3,084
Las Animas	948	5,312	3,504	5,808
	<u>1,309</u>	<u>7,585</u>	<u>4,827</u>	<u>8,892</u>

FOURTH DISTRICT

County	John F. Bennett —D		Albert B. Logan —R	James F. Quine, Jr. —R	
	P. E.	G. E.	P. E.	P. E.	G. E.
Douglas	264	749	210	168	902
Elbert	272	825	190	258	1,034
El Paso	3,085	13,117	2,130	3,495	14,592
Kit Carson	210	1,185	442	433	1,699
Lincoln	448	1,188	357	282	1,140
Teller	646	767	75	102	638
	4,925	17,831	3,404	4,738	20,005

FIFTH DISTRICT

County	William J. Meehan —D	
	P. E.	G. E.
Eagle	400	1,566
Lake	851	2,039
Summit	169	526
	1,420	4,131

SIXTH DISTRICT

County	George R. Armstrong —R		Byron V. Bradford —R	George E. Dilts —D	
	P. E.	G. E.	P. E.	P. E.	G. E.
Archuleta	66	525	43	101	449
Dolores	95	323	68	217	429
La Plata	521	2,370	603	641	2,801
Montezuma	498	1,352	149	595	1,912
San Juan	34	363	46	80	333
	1,214	4,933	909	1,634	5,924

SIXTH DISTRICT TO FILL VACANCY

County	George R. Armstrong —R		George E. Dilts —D	
	P. E.	G. E.	P. E.	G. E.
Archuleta	603	85	11	
Dolores	399	190	28	
La Plata	2,784	571	268	
Montezuma	1,679	545	129	
San Juan	470	68	6	
	5,935	1,459	442	

SEVENTH DISTRICT

County	Harrison Loesch —R		*Jerome A. Paul —D		Amos L. Raso —R		Felix L. Sparks —D	
	P. E.	P. E.	P. E.	G. E.	P. E.	G. E.	P. E.	G. E.
Delta	531	787	588	2,268	3,882			
Gunnison	119	367	105	1,059	1,338			
Hinsdale	55	41	19	128	78			
Mesa	669	1,940	1,228	6,528	8,370			
Montrose	800	665	303	2,353	2,563			
Ouray	54	74	33	570	449			
San Miguel	59	206	72	475	568			
	2,287	4,080	2,348	13,381	17,248			

*Withdrew after Primary Election.

EIGHTH DISTRICT

County	George C. Pomainville —D		M. E. H. "Marc" Smith —R	
	P. E.	G. E.	P. E.	G. E.
Boulder	2,058	9,391	2,535	9,319
Jackson	109	251	152	331
Larimer	1,156	6,155	2,903	9,773
Weld	1,904	8,339	3,702	13,898
	5,227	24,136	9,292	33,321

NINTH DISTRICT

County	Robert Delaney —D		William A. Mason —R		Neil S. Mincer —R
	P. E.	G. E.	P. E.	G. E.	P. E.
Garfield	640	2,707	622	2,047	256
Pitkin	301	505	62	223	6
Rio Blanco	222	1,037	179	693	268
	1,163	4,249	863	2,963	530

TENTH DISTRICT

County	Sara Roe Bauer —D		Joseph R. Botleman —D		Vincent Cristiano —D	S. Philip Cabibi —R	Charles F. Keen —R	
	P. E.	G. E.	P. E.	G. E.	P. E.	P. E.	P. E.	G. E.
Crowley	89	242	1,006	43	61	273	885	
Otero	325	564	4,230	148	323	1,337	3,848	
Pueblo	1,813	3,857	22,598	2,736	1,569	2,695	12,012	
	2,227	4,663	27,834	2,927	1,953	4,305	16,745	

ELEVENTH DISTRICT

County	Emerson M. Eagleton —R		John Stump Witcher —D	
	P. E.	G. E.	P. E.	G. E.
Chaffee	256	1,614	524	1,861
Custer	344	485	154	443
Fremont	1,699	3,337	1,629	5,175
Park	173	570	155	587
	2,472	6,006	2,462	8,066

TWELFTH DISTRICT

County	John Ira Green —R		Leonard M. Haynie —D	
	P. E.	G. E.	P. E.	G. E.
Alamosa	411	2,550	902	1,857
Conejos	1,406	2,748	419	1,284
Costilla	272	1,265	488	1,263
Mineral	47	174	86	157
Rio Grande	435	2,293	313	1,585
Saguache	161	1,144	143	753
	2,732	10,174	2,351	6,899

THIRTEENTH DISTRICT

County	William B. Paynter —R	
	P. E.	G. E.
Logan	1,120	5,276
Morgan	1,602	5,117
Phillips	412	1,568
Sedgwick	202	1,396
Washington	402	2,263
Yuma	516	3,116
	4,254	18,736

COUNTY OFFICERS

COUNTY	COUNTY SEAT	COUNTY CLERK	COUNTY TREASURER	ASSESSOR	SHERIFF	COUNTY JUDGE	CLERK COUNTY C
1 Adams	Brighton	Clyde L. Miller—R.	Ben H. Tyler—D.	L. D. Burnside—D.	Homer W. Mayberry—R.	R. Boyd Garrison—R.	Mrs. Bernice Ward—R.
2 Alamosa	Alamosa	C. Elmer Storms—D.	Mrs. Elizabeth P. Joyce—D.	Mrs. Irene Shakespeare—D.	Jimmie L. Cockrum—D.	Gilbert H. Sheesley—R.	Edith Hansen
3 Arapahoe	Littleton	Earl K. Downing—R.	Charles B. Sinclair—R.	Ira Van Dreal—R.	Charles L. Foster—R.	Henry Bruce Teller—D.	J. T. Robertson—D.
4 Archuleta	Pagosa Springs	Philip R. Johnson—D.	Earl L. Lattin—R.	Earl Lattin—D.	Norman Ottoway—D.	J. T. Martinez—R.	J. T. Martinez—R.
5 Baca	Springfield	Mrs. Margaret L. Reschke—R.	Mrs. Hannah Baker—D.	Hiram T. Burton—D.	Joe Dennett—R.	W. R. Randall—D.	Willard J. Allen
6 Bent	Las Animas	Mrs. Myrtle V. Johnson—D.	Floyd C. Smith—R.	R. C. Banta—D.	L. E. Brookshire—D.	Willard J. Allen—D.	Willard J. Allen
7 Boulder	Boulder	Jack Londen—R.	Lynn R. McIntosh—R.	Aylwin A. Smith—R.	Arthur T. Everson—R.	William E. Buck—R.	R. G. Sutherland
8 Chaffee	Salida	Jos. T. McDonough—D.	Chas. C. White—D.	Laurence E. England—D.	Emmet L. Shewalter—D.	Harry L. McGinnis—D.	Arthur E. Smith
9 Cheyenne	Cheyenne Wells	Mrs. Ava L. Crosby—R.	Mrs. Marie A. McMillen—R.	Stanley J. Robinson—D.	E. H. Beyer—R.	R. A. Martinson—R.	R. A. Martinson
10 Clear Creek	Georgetown	Kenneth E. Moscript—R.	J. Ben Foley—D.	Edmund Rowse—R.	James E. Sacra—R.	William E. Walthers—R.	William E. Walthers
11 Conejos	Conejos	Reginaldo Garcia, Jr.—R.	Antonio Lucero—D.	Leandro R. Jaramillo—R.	Gilbert De Herrera—R.	J. Fidel Chavez—D.	Kathleen Haynie—D.
12 Costilla	San Luis	Abel I. Vigil, Jr.—R.	Joe M. Espinoza—D.	Ernest A. Vigil—D.	Mike Rampa—D.	A. Prax Ortega—D.	—
13 Crowley	Ordway	C. C. Biddison—R.	Lucas E. Davis—R.	Harry Morgan—R.	J. J. O'Connell—D.	E. M. Stroud—D.	Mrs. Anne M. Bauman
14 Custer	Westcliffe	Mrs. Stella Byrne—D.	Olen A. Kennon—R.	Floyd A. Thompson—R.	Fred Squire—R.	August N. Menzel—R.	August N. Menzel—R.
15 Delta	Delta	O. A. Ehrsgott—R.	Clement A. Bowle—R.	J. B. Drake—D.	Leonard L. Wilcox—R.	Vance O. Kilmer—R.	Mrs. Lucile S. Ford
16 Denver	Denver	Miss Mae Hynes	Roy W. Cass—R.	Roy W. Cass—R.	Charles E. McArthur—R.	Charles E. Kettering—D.	John L. Griffith—D.
17 Dolores	Dove Creek	Mrs. Irma D. Morris—D.	Mrs. Lauphine Elliott—D.	Floyd I. Davis—R.	Frank L. McKibben—D.	George E. Hicks—D.	Mrs. Lauphine Elliott
18 Douglas	Castle Rock	Charles A. Prescott—D.	William J. Buckner—R.	Ross W. Johnston—R.	John L. Hammond—R.	Walter E. Jesiop—D.	Walter E. Jesiop—D.
19 Eagle	Eagle	Thomas F. McBrean—R.	Forrest W. Cave—D.	Timothy J. Sullivan, Jr.—R.	W. M. Wilson—R.	Mrs. Mabel A. Ethel—D.	Mrs. Mabel A. Ethel
20 Elbert	Kiowa	Mrs. Delpha S. Moreland—D.	C. W. Elsner—R.	Orley Crouch—R.	G. R. Brown—R.	W. V. Kennett—D.	W. V. Kennett—D.
21 El Paso	Colorado Springs	Charles Ozias—D.	W. J. Graham—R.	A. W. Sparkman—R.	Norman E. Short—D.	Irvin E. Jones—D.	Harry A. Thompson
22 Fremont	Canon City	Miss Mary J. McDonough—D.	Leslie O. Burris—R.	J. W. Haymaker—R.	Gilbert E. Ackelbein—D.	C. A. Fredrickson—R.	Miss Florence Gerlach
23 Garfield	Glenwood Springs	Charles S. Keegan—D.	G. B. Helm—R.	Richard Wilson—R.	Edward Taylor—R.	Mrs. Marie Holloway—R.	—
24 Gilpin	Central City	Miss Marie Garwood—D.	Hugh L. Lawry—R.	Victor J. Tavanatti—R.	Kenneth McKenzie—D.	William S. Barrick—D.	—
25 Grand	Hot Sulphur Springs	R. O. Throckmorton—R.	Carl F. Fischer—R.	Frank Stafford—D.	Chester McQuary—R.	Wilburn W. Shiflet—R.	—
26 Gunnison	Gunnison	Mrs. Ethel A. Sisson—R.	M. J. Hogan—D.	Karl Zugelder—D.	Herb G. Lashbrook—R.	C. C. McWilliams—D.	Miss Mary Luchetta
27 Hinsdale	Lake City	Mrs. Mabel B. Rawson—R.	Mrs. Pearl McCloughan—R.	Mrs. Annie M. Doran—R.	Marvin J. Rexroad—R.	E. W. Soderholm—R.	E. W. Soderholm—R.
28 Huerfano	Walsenburg	Damaso Vigil, Jr.—D.	Miss Emma Bellotti—D.	Charles Duran—R.	Claud Swift—D.	Joseph A. Barron—D.	Mrs. Pauline Sanchez
29 Jackson	Walden	Mrs. Lillian F. Mitchell—D.	Miss Florence A. Wilkins—D.	Harold E. Hampton—D.	Norman C. Woodruff—R.	J. A. McNamara—D.	J. A. McNamara—D.
30 Jefferson	Golden	Robert W. Newton—R.	Walter Brown—D.	Kenneth Fenwick—D.	Carl E. Enlow—R.	C. D. Stoner—R.	G. B. Hawley—R.
31 Kiowa	Eads	Art Bradbury—R.	Donald Durrett—R.	Edwin Immer—R.	Eugene C. Kelley—R.	George B. Black—R.	George B. Black
32 Kit Carson	Burlington	Miss Mary E. Evans—R.	Sam E. Travis—R.	Parke H. Guthrie—R.	O. C. Dunlap—R.	E. M. Short—R.	E. M. Short—R.
33 Lake	Leadville	John Gregory—D.	Emmett Irwin—D.	John J. Bohan—D.	Clarence McMurrugh—D.	Walter A. Johnson—D.	Minnette Walsh—D.
34 La Plata	Durango	Mrs. Edith C. Kiel—R.	Thomas Mason—R.	John R. Brennan—R.	Chester J. Petty—R.	W. Bruce Jacobson—R.	Miss Bonnie Schipper
35 Larimer	Fort Collins	C. Marion Bradford—R.	C. S. Ickes—R.	W. Ed. Wright—R.	Ray M. Barger—R.	Harry H. Hartman—R.	N. G. Cushing
36 Las Animas	Trinidad	Ed Bustamante—D.	James Ingles—D.	Isaac Sandoval—D.	Felix Garcia—D.	William T. Eckhart, D.	Nick Bisulco—D.
37 Lincoln	Hugo	L. R. Howe—R.	Wm. M. Jones—D.	E. J. Kidder—R.	Merlin H. Koerner—R.	T. G. Watson—D.	Miss Mary Lou Musgr
38 Logan	Sterling	Carroll G. Bryan—R.	W. F. Alexander—D.	J. H. Berkstresser—R.	E. M. Brown—R.	Joseph A. Davis—R.	Mrs. Marguerite Dersl
39 Mesa	Grand Junction	Miss Annie M. Dunston—D.	Burrell C. Reynolds—D.	H. V. Zimmerman—R.	E. E. Redmon—D.	Adair J. Hotchkiss—D.	Miss Gladys Moss—D.
40 Mineral	Creede	Mrs. Jane A. Oates—R.	Wm. T. Jackson—R.	John G. Dabney—D.	Harry L. Larson—D.	Loyd J. Wanzler—R.	—
41 Moffat	Craig	H. H. Mobley—D.	Russell H. Coles—R.	W. O. Miner—D.	George Krieger—R.	N. Frank Nelson—R.	—
42 Montezuma	Cortez	John Leavitt—D.	Mrs. Lois Story Miller—D.	Charles R. Bowers—R.	Frank Weaver—R.	James F. Miller—D.	Mrs. Anna Patten—D.
43 Montrose	Montrose	Ira C. Foster—R.	Mrs. Ruth E. Gaines—R.	James L. Hamilton—R.	Arthur Sutton—R.	John C. Bass—R.	Mrs. Loretta Sanders
44 Morgan	Fort Morgan	Loyal C. Baker—R.	Edw. H. Madison—R.	Lewis E. Wilson—R.	Sam Pedersen—D.	A. W. Dulweber—D.	Mrs. Mary Terriere
45 Otero	La Junta	Edward S. Whitcomb—R.	Edward T. Oberling—R.	Emmett B. Clark—R.	George Freidenberger—R.	William L. Gobin—R.	Rachael Bridges—R.
46 Ouray	Ouray	Mrs. Eva K. Moule—R.	Thomas H. Cline—R.	Patricio Stealey—D.	Harry R. Scott—R.	E. D. Jelsma—D.	E. D. Jelsma—D.
47 Park	Fairplay	Mrs. Cherie Burgess—R.	Glen L. Swanson—R.	Walter R. Merritt—R.	S. H. Law—R.	Clarence S. Bullock—R.	Mrs. Violet W. Bullo
48 Phillips	Holyoke	Mrs. Cora E. Smith—R.	Miss Martha Hansen—R.	B. A. Stephenson—R.	Harry M. Clements—R.	Leon Kepler—R.	Leon Kepler—R.
49 Pitkin	Aspen	M. M. Neihardt—R.	Kenneth S. Watt—R.	Warren J. Conner—R.	Otto Johnson—D.	Wm. R. Shaw—R.	—
50 Prowers	Lamar	Max V. Speckmann—R.	I. S. Heath—R.	N. G. Jones—R.	John Hodson—R.	E. R. Jones—R.	Mrs. Huldah Hurley
51 Pueblo	Pueblo	A. G. Kochenberger—D.	J. E. Creel—D.	Marvin L. Starkweather—D.	Joe E. Tucker—D.	Hubert Glover—D.	Charles Ruth Park—D.
52 Rio Blanco	Meeker	Herbert H. Morlan—R.	C. L. Tagert—D.	H. E. Sexson—D.	Robert T. Fuiton—R.	C. C. Aldrich—R.	C. C. Aldrich—R.
53 Rio Grande	Del Norte	Ralph W. Roberts—R.	W. R. Laase—R.	Floyd B. Gibbs—D.	Allan Fennell—R.	Manlius T. Hancock—D.	L. A. Ruark
54 Routt	Steamboat Springs	Cecil Rorex—D.	T. W. Poulson—D.	John Petranovich—D.	William Macfarlane—R.	Eugene Steele—D.	—
55 Saguache	Saguache	Miss Edith L. Jones—R.	Sidney B. Hall—D.	Clifford Burnham—R.	Chas. McCormick—R.	W. J. Werner—R.	W. J. Werner
56 San Juan	Silverton	Mrs. Sylvia L. Nelson—R.	Mrs. Ida L. Grimes—R.	Arthur R. Walker—R.	Herman Zueck—D.	Charles Pearson—R.	Charles Pearson—R.
57 San Miguel	Telluride	Miss Sally A. Clark—D.	Donald A. O'Rourke—D.	Harold C. Ballard—D.	T. H. Mahoney—D.	Everett Vernon—D.	—
58 Sedgwick	Julesburg	Mrs. Florence Arndt—D.	W. R. Bennisson—R.	Glen B. McKinstry—R.	Glenn Goodard—R.	Denmer A. Wells—R.	Harriett Monson—R.
59 Summit	Breckenridge	Herman Dereum—R.	Frank F. Brown—R.	Ed. T. Stuard—D.	M. R. Loomis—D.	J. M. Armstrong—D.	J. M. Armstrong—D.
60 Teller	Cripple Creek	Mrs. Mammie Wells—D.	John W. Reifenrath—D.	Ed. T. Stuard—D.	Cecil A. Markley—D.	Vincent H. Ryan—D.	—
61 Washington	Akron	Mrs. Harold G. Simpson—R.	Harold L. Sisson—R.	Tom W. Rolofson—D.	Wesley McDonald—R.	James E. Kelly—D.	Mrs. Lucille Woodard
62 Weld	Greeley	Mrs. Ann Spomer—R.	Harold H. Seaman—R.	William J. Barry—R.	George A. Hill—R.	Donald A. Carpenter—R.	Ross I. Shackle—D.
63 Yuma	Wray	John Adcock—R.	Wm. T. Rosenkrans—R.	Homer M. Bruce—R.	Bruce O. Wilson—R.	Buffer Roberts—R.	Buffer Roberts—R.

OFFICERS OF COLORADO—1949-1950

COUNTY COURT	CLERK DISTRICT COURT	SURVEYOR	SUPT. OF SCHOOLS	CORONER	COUNTY COMMISSIONERS			
Adams Ward—R.	Carl Jacobson—R.	James C. Counter—D.	Bertha E. Heid—D.	Lyle G. Rice—R.	Wm. Eppinger—D.	E. G. Waymire—D.	Del J. Cimiyott—D.	1
Anderson—R.	Edith Hansen, R.	Norman White—D.	Mrs. Mabel O'Laughlin—D.	James R. Hurley—R.	Ray Wells—R.	Owen Baldwin—D.	Ellis B. Nash—D.	2
Bartlett—D.	O. C. Hoffman—R.	David L. Nicholl—R.	Mrs. Thelma S. Hastings—R.	Ivan J. Joss—R.	W. C. Giggall—R.	Leonard J. Grant—D.	Royce P. Robins—D.	3
Bartlett—D.	Philip R. Johnson—D.		Mrs. Rachel Tishner—R.		Dailey Hott—D.	J. T. Chambers—R.	Harmon T. Clark—D.	4
Bartlett—D.	Elmer E. Terry—R.		Lillian Collings—D.	Dr. G. A. Duffy—R.	Jess L. Suhler—R.	Ewell S. Benson—D.	Loyd Freeman—D.	5
Bartlett—D.	Wm. A. Bush—		Mrs. Hazel L. Martin—R.	Lester B. Powell—R.	S. A. Pryor—D.	Harry E. Blackburn—D.	Everett J. Roesch—R.	6
Bartlett—D.	C. W. Atkinson—	J. E. Byron—R.	O. L. Dever—R.	Geo. W. Howe—R.	A. W. Thurston—R.	Elmer Autrey—R.	W. D. McCaslin—D.	7
Bartlett—D.	Arthur E. Smith—	Joe M. Cuenin—R.	Mrs. Bessie M. Shewalter—D.	Joe E. Stewart—D.	Robert T. O'Haver—R.	Irl Taliaferro—D.	Ben Behrman—D.	8
Bartlett—D.	Miss Mattie Trimble—	D. H. Zuck—R.	Mrs. Cecile G. McClaskey—R.	A. H. Brentlinger—R.	Joseph R. Carrigan—R.	F. H. Hadley—R.	L. D. Ferguson—R.	9
Bartlett—D.	John W. Old—D.	Chas. L. Harrington—D.	Miss Dorothy Carlson—R.	Freeman D. Fowler—R.	Bert B. Wright—R.	Henry C. Nelson—R.	Roy McRee—D.	10
Bartlett—D.	Robert Valdez—R.	Jennings Thomas—R.	Robert Montano—D.	Arthur Gjellum—D.	Delfino E. Garcia—R.	W. Fred Haynie—D.	Juan I. Medina—R.	11
Bartlett—D.	Joseph F. Romero—R.	A. M. Weaver—	Mrs. Belinda S. Carpenter—R.	Dr. William C. Shontz—R.	Epifanio Gold—D.	Fred Espinoza—R.	Epifanio Lopez—D.	12
Bartlett—D.	Mrs. Letha P. Leach—	Carl Klein—R.	Mrs. Rubylee Guilleams—D.	Emil J. Jonach—R.	E. G. Clatworthy—R.	B. H. Sweckard—R.	Glen W. Smith—R.	13
Bartlett—D.	August N. Menzel—R.	Richard C. Colgate—R.	Miss Frances E. Kettle—R.	Chas. A. Menzel—R.	Dewey Austin—D.	Dwight E. Tibbetts—D.	D. C. MacKenzie—D.	14
Bartlett—D.	Mrs. Pearl H. Stewart—	Abner S. McKee—R.	Miss Martha Savage—D.	Quincy Lamar—D.	W. F. Blaine—R.	Charles Kiser—D.	Joe Barnie—D.	15
Bartlett—D.	J. E. Goodman—	Edward A. Smith—		Dr. Angelo Lapi—	Roy W. Cass—	Thomas Campbell—	A. A. Blakley—	16
Bartlett—D.	Dan B. Hunter—D.	Henry Curtis—R.	Miss M. Anna Engel—R.	C. M. Engel—R.	Louis M. Jones—R.	E. E. Ballenger—D.	Wade Redford—D.	17
Bartlett—D.	O. P. Weston—D.	William H. Lea—D.	Elizabeth E. Bean—R.	Douglas Andrews—D.	Roy Woodworth—R.	Frank Dalkan—R.	Donald D. Williams—D.	18
Bartlett—D.	Leo Fessenden—R.	Forrest L. Head—R.	Mrs. Mary C. Grant—R.	Paul Andre—R.	H. A. Nottingham—D.	Carl Forster—D.	LeRoy Borah—R.	19
Bartlett—D.	Harry F. Anderson—R.	Thomas J. Russell—R.	Mrs. Esther Carson—R.	Ralph B. Maul—R.	R. W. Lambert—R.	Charles L. Kimzey—D.	E. F. Ager—R.	20
Bartlett—D.	Mrs. Ruth M. Burns—	Otis W. Witcher—D.	Mrs. Lucy S. Perry—R.	Dr. Henry W. Maly—R.	Keith D. McBurney—R.	Fred H. Monk—R.	John M. Torrence—R.	21
Bartlett—D.	Jonathan Seaman—R.	Tom Walker—R.	Mrs. Adella M. Archer—D.	Chet Cook—R.	Norman J. Boyd—D.	J. Walter Martin—R.	Finis Parks—R.	22
Bartlett—D.	J. S. Woody—R.		Alma M. Harris—D.	J. I. Burdge—R.	Dewey Williams—R.	Wm. Dodds Scott—R.	K. A. Baillie—R.	23
Bartlett—D.	Frank A. Potter—R.		Mrs. Nora S. Scott—D.	Frank Daugherty—R.	Otto M. Blake—R.	Martin N. Nelson—R.	Arthur Crow—R.	24
Bartlett—D.	Charles W. Bloom—D.	E. D. Bloye—R.	Harriet C. Dolloff—R.	D. I. Cox—R.	James E. Quinn—D.	George E. Field—R.	Fay F. DeBerard—R.	25
Bartlett—D.	Mrs. Alma Miller—	L. G. Dale—R.	Mrs. Emma L. Hards—R.	Alex Campbell—D.	Anton Danni—D.	C. Muri Ellebrecht—D.	Ed Leonard—R.	26
Bartlett—D.	H. G. Heath—D.		Mrs. Carolyn Wright—R.	Arthur P. Griffiths—R.	H. L. Townsend—D.	Henry T. Hoffman—R.	Orville Dowzer—R.	27
Bartlett—D.	Charles Haines—	A. S. Willburn—D.	Miss Frances Nelson—D.	Gus Crump—D.	Sabino Archuleta—D.	Fred Scholes—D.	Clyde M. Johnson—D.	28
Bartlett—D.	Archie G. Maine—R.	Frank DeLynden—D.	Walter E. Brunner—R.	Dr. C. M. Morgan—R.	M. P. Cloonan—R.	L. B. Wamsley—D.	Ray C. Fox—D.	29
Bartlett—D.	Ben Burgess—R.	E. E. Duckworth—D.	Mrs. Mariam Martensen—R.	Arden Albers—D.	Emil Schneider—D.	Walter True—D.	George Green—R.	30
Bartlett—D.	C. E. Hamilton—	Roland Eder—D.	Miss Florence Morris—R.	Dr. R. G. Ward—R.	Wm. E. Rose—R.	P. L. Reed—R.	Raymond Tinsley—R.	31
Bartlett—D.	Mrs. Mabel Boger—		Mrs. Willa Zick—R.	W. R. Hendricks—R.	Reuben C. Anderson—R.	Earl Boren—D.	Ernest L. McArthur—R.	32
Bartlett—D.	Ross Pearson—R.		Miss Lucy E. Cramer—R.	Andrew Cassidy—D.	Francis D. Slavin—D.	Albert Zack—R.	Adolph Kuss, Sr.—D.	33
Bartlett—D.	Walter C. Allan—	A. L. Kroeger—R.	Violet Tipotsch—D.	R. L. Downing—R.	D. W. Sexton—R.	Emmet Hott—D.	Lloyd F. Benton—R.	34
Bartlett—D.	Kenneth A. Johnson—	James H. Andrews—R.	Frank L. Irwin—R.	Harold A. Warren—D.	Ernest Fischer—R.	Robert H. Watts—R.	A. Walter Lawson—R.	35
Bartlett—D.	Maupin Woodson—D.	Harry Hendrickson—D.	Harry Raye—D.	Ed Toupal—D.	John Kancilia, Jr.—D.	Claude Foster—R.	Joe La Crue—D.	36
Bartlett—D.	R. J. Barngrover—R.	Harold Lee—R.	Mrs. Irene Hamling—D.	James W. Buchanan—R.	C. L. Evans—R.	A. S. Covington, Sr.—D.	Joe Pelster—D.	37
Bartlett—D.	Mrs. Cordelia K. Davis—R.	J. E. Youngquist—R.	Mrs. Doris R. Plummer—D.	Robert M. Jackson—R.	Earl R. Bonham—R.	Oscar M. Marks—R.	Hugh E. Williams—R.	38
Bartlett—D.	Mrs. Lucy E. Hogan—D.	Roy L. George—D.	Mrs. Lucile H. Mahannah—D.	W. H. Snyder—D.	H. Grady Puett—D.	Oscar C. Mayne—D.	Walter A. Stout, Jr.—R.	39
Bartlett—D.	Wm. T. Jackson—R.	Paul B. Davis—	Mrs. Maude C. Lamb—R.	Fred Ryden—D.	Wm. H. Swinehart—R.	Erick W. Nelson—R.	Everett E. Corwin—R.	40
Bartlett—D.	Ralph L. White—D.	Fred D. Legler—D.	Henry E. Steele—D.	I. J. Robacker—D.	Claude J. Myers—R.	Cy Hansen—R.	Earl Wilson—D.	41
Bartlett—D.	Mrs. Anna Patten—D.	Dave C. Hickman—D.	Mrs. Lotta Manauagh—R.	J. W. Ertel—R.	Chas. T. Porter—I.	J. C. Rumburg—R.	Claude Everett—D.	42
Bartlett—D.	Clide N. McClean—R.	W. E. Hance—R.	Rosella Wallis—R.	Merrill Ormsbee—D.	Fred Sullivan—R.	Harland K. Duncan—R.	Clyde Porter—D.	43
Bartlett—D.	Hugh R. Smith—R.	N. M. MacNeill—D.	Miss Marian Lockwood—D.	Francis S. Jolliffe—R.	R. J. Lamborn—R.	J. R. Christensen—D.	Steve Christensen—R.	44
Bartlett—D.	Miss Leah M. Ryder—R.	Franklin Shafer—D.	Miss Ruth R. Lytle—R.	Ralph E. Peacock—R.	G. D. Steward—R.	R. P. Lewis—R.	W. A. Bauserman, Jr.—D.	45
Bartlett—D.	Mrs. Marg. L. MacLennan—R.	Gerald F. Galloway—R.	Ruth Massard—R.	Leo Flor—D.	Buel H. Adams—R.	Harry McClure—R.	Wm. McCullough—D.	46
Bartlett—D.	Clarence S. Bullock—R.	Walter O. Lutze—R.	Elizabeth Smith—R.	Dr. R. B. Patterson—R.	Louis Almgren—D.	E. B. Bell—D.	W. C. Lewis—R.	47
Bartlett—D.	George A. Barker—R.	Tom Walker—	Mrs. Earlean F. Jung—R.	Dr. J. Ralston—R.	Arthur Falk—R.	S. J. Meakins—D.	D. F. Sagehorn—R.	48
Bartlett—D.	Miss Louise M. Berg—R.	George H. Russell—R.	Mrs. Lettie Lee Brand—D.	Bernard P. Popish—D.	T. J. Sardy—D.	Clarence O. Quam—D.	Orest A. Gerhaz—D.	49
Bartlett—D.	Mrs. Marie Uhl—	Simon F. Elliot—D.	Mrs. Nan S. Creeghe—R.	Dr. C. T. Knukey—R.	Wm. N. Wilson—R.	W. H. Straney—R.	W. M. Turpin—R.	50
Bartlett—D.	Robert D. White—R.	John W. Wharton—R.	Stanley A. Leftwich—D.	Dr. C. N. Caldwell—D.	Pete Hughes—D.	John E. Hill—D.	John H. Reece—R.	51
Bartlett—D.	Antonio J. N. Valdez—R.	Ward Mathias—R.	Mrs. Josephine Holland—D.	Clyde B. Stephenson—R.	Hugh L. Caldwell—R.	William Murray—D.	K. W. Phillippi—D.	52
Bartlett—D.	M. M. Burch—	Stanley Dismuke—D.	Mrs. Ruth M. Mathias—R.	W. Edward Sharp—D.	R. S. Loser—D.	Geo. F. Millikin—D.	Vernon C. McCallister—R.	53
Bartlett—D.	Mrs. Fay Fennell—	W. L. Hammond—D.	Miss Vivien Maxwell—D.	Howard R. Root—R.	J. Frank Stetson—D.	William S. Green—D.	Claude A. Luekens—D.	54
Bartlett—D.	Joseph E. Dresback—D.	J. M. Cook—D.	Mrs. Lulu K. Bell—R.	Dr. John M. Coleman—R.	Geo. F. McClure—D.	H. K. Lockett—D.	Geo. H. Curtis—R.	55
Bartlett—D.	Mrs. Alice L. Erickson—D.		Mrs. Anna C. Bell—D.	Wm. E. Maguire—D.	John Glanville—R.	C. W. Fleeming—R.	Louis Dalla—R.	56
Bartlett—D.	Mrs. Harriett Monson—R.		Miss Irene M. P. Wichmann—D.	Dr. G. G. Balderston—R.	John Ferguson, Jr.—D.	Wm. Finnegan—D.	George Mike Young—R.	57
Bartlett—D.	C. W. Burnheimer—R.	L. A. Chase—D.	Miss Veta Stalcup—R.	Dr. John C. Lundgren—R.	Emray A. Price—R.	Clarence L. Eversman—R.	W. J. Jenkins—D.	58
Bartlett—D.	Mrs. Martha Shafer—	A. B. Crosley—R.	Mrs. Lilia P. Stafford—R.	Lester C. Owens—R.	Lawrence W. Garvie—D.	Earl W. Rice—D.	Daniel Moguee—R.	59
Bartlett—D.	Mrs. Minnie Blauser—	E. E. Hickman—R.	Mrs. Loretta Surber Davis—D.	Dr. A. C. Denman—D.	W. B. Moore—D.	Lee Wild—D.	Harold Ellis—D.	60
Bartlett—D.	A. J. Luther—R.	T. B. Moody—R.	Delman Yackie—R.	Y. E. Wohlauer—R.	Oscar E. Higgason—R.	James E. Lee—D.	Tom Combs—D.	61
Bartlett—D.	Mrs. Esther Cassin Serafini—R.	Wm. B. Coston—D.	Paul N. Lodwick—R.	John W. Allnut—R.	Carl J. Magnuson—R.	A. Wm. Hanson—R.	Geo. L. Andersen—R.	62
Bartlett—D.			Mrs. May Glaser—R.	Paul Morris—R.	Geo. E. Huey—D.	Arthur Quiggle—D.	Geo. W. Wingfield—D.	63

