

STATE OF COLORADO

Abstract of Votes Cast

AT THE

PRIMARY ELECTION

Held on the Fourteenth Day of September, A. D. 1948

AND AT THE

GENERAL ELECTION

Held on the Second Day of November, A. D. 1948

FOR

Presidential Electors, United States Senators, Congressmen,
State, Legislative and District Officers

AND

Proposed Constitutional Amendments, Initiated
and Referred Bills

ALSO

Directory of the United States, State, Legislative,
District and County Officers



COMPILED FROM OFFICIAL RETURNS

BY

GEORGE J. BAKER
Secretary of State

1948

PRICE, 50 CENTS

ABSTRACT OF VOTES CAST AT A PRIMARY ELECTION HELD ON TUESDAY, SEPTEMBER 14, A. D. 1948, FOR U. S. SENATOR, J

	U. S. SENATOR				JUSTICE OF SUPREME COURT					GOVERNOR		LIEUTENANT GOVERNOR		SECRETARY OF STATE		
	Will F. Nicholson—R.	John C. Vivian—R.	Edwin C. Johnson—D.	Eugene Cervi—D.	H. Lawrence Hinkley—R.	George A. Luxford—R.	Allyn Cole—R.	E. V. Holland—D.	O. Otto Moore—D.	David A. Hamil—R.	Lee Knous—D.	Homer L. Pearson—R.	Walter W. Johnson—D.	Orville E. Frakes—R.	Harold R. Smethills—R.	George J. Baker—D.
Adams	672	817	1,164	399	1,061	1,031	475	1,044	1,161	1,340	1,392	1,372	1,252	914	452	892
Alamosa	241	215	935	304	232	276	181	877	774	404	1,065	401	1,000	283	127	749
Arapahoe	938	829	1,640	796	1,210	1,228	616	1,748	1,799	1,606	2,217	1,631	2,066	994	577	1,300
Archuleta	38	75	129	31	71	57	37	111	92	95	132	58	112	57	35	88
Baca	192	408	381	114	252	249	377	264	421	481	421	481	481	352	125	243
Bent	192	202	371	170	258	187	197	375	345	330	458	2,644	2,422	251	81	270
Boulder	1,634	1,286	2,187	829	2,047	1,955	1,073	2,018	2,197	2,649	2,740	2,644	2,422	1,710	952	1,662
Chaffee	189	205	564	248	243	264	131	611	598	332	727	332	465	24	234	454
Cheyenne	220	346	152	59	232	281	177	140	125	322	188	322	167	320	136	97
Clear Creek	141	186	250	85	232	246	83	237	212	290	293	290	290	195	92	192
Conejos	544	1,038	489	145	896	862	478	375	327	1,211	478	1,190	434	432	325	325
Costilla	126	221	510	103	224	185	94	440	292	276	521	1,190	259	291	373	373
Crowley	156	208	402	35	237	240	122	296	237	298	391	336	336	280	92	209
Custer	155	268	191	29	268	207	131	143	111	336	184	336	336	259	99	105
Delta	488	678	857	230	689	654	522	783	738	1,044	1,020	1,063	934	740	99	642
Denver	20,010	11,811	37,199	16,969	22,192	23,246	10,096	40,179	41,737	28,201	49,247	28,711	45,934	14,906	13,575	31,528
Dolores	39	113	279	28	93	67	37	191	151	125	273	120	273	95	28	166
Douglas	221	220	311	54	258	245	145	235	234	379	330	373	330	267	103	149
Eagle	102	157	338	154	148	129	154	344	313	215	425	221	338	165	57	277
Elbert	213	333	318	84	325	318	161	250	246	453	354	450	338	337	103	202
El Paso	3,358	2,514	3,017	986	3,996	3,246	2,312	2,730	2,720	5,339	3,614	5,309	3,306	3,412	1,883	2,225
Fremont	676	1,214	1,532	393	1,210	1,163	788	1,355	1,360	1,710	1,753	1,709	1,624	1,208	493	1,001
Garfield	325	555	634	153	341	400	656	491	518	786	702	781	662	518	258	424
Gilpin	61	39	194	45	63	70	28	157	167	81	208	85	189	60	13	114
Grand	131	171	157	34	189	197	94	125	108	249	170	249	149	184	68	96
Gunnison	98	152	428	106	134	163	120	380	345	218	463	220	425	73	283	283
Hinsdale	30	54	48	8	57	53	19	35	34	75	55	78	51	57	17	25
Huerfano	301	187	1,620	482	320	321	141	1,182	1,099	377	1,453	1,321	1,321	282	134	1,135
Jackson	47	159	123	28	112	131	59	100	90	175	134	172	126	126	46	97
Jefferson	1,895	2,664	2,020	803	3,088	3,047	1,359	1,962	2,121	3,952	2,627	4,094	2,477	2,099	1,920	1,610
Kiowa	64	97	103	36	104	74	76	96	83	137	112	138	109	115	31	66
Kit Carson	440	575	248	46	579	610	299	187	200	858	269	856	242	606	263	135
Lake	105	100	793	210	119	142	82	710	662	178	861	175	839	114	72	561
La Plata	481	617	713	182	693	659	317	616	572	942	805	935	728	692	256	535
Larimer	1,855	1,498	1,199	401	2,331	2,073	1,142	1,124	1,143	3,034	1,484	3,058	3,058	2,024	918	971
Las Animas	418	685	3,166	1,591	756	620	374	3,024	2,907	917	1,484	3,883	3,546	751	221	2,351
Lincoln	320	395	459	149	455	453	222	411	367	617	551	603	502	419	204	283
Logan	581	679	793	221	1,141	658	356	680	711	1,171	889	1,154	834	797	294	517
Mesa	850	913	2,018	294	1,044	921	945	1,743	1,638	1,610	2,213	1,624	2,075	1,086	538	1,338
Mineral	17	34	77	28	31	28	13	79	63	49	97	48	85	27	20	68
Moffat	313	322	422	51	371	358	284	363	316	576	429	562	408	372	183	256
Montezuma	193	426	714	72	366	362	176	510	411	531	744	518	637	401	139	466
Montrose	379	716	785	128	563	608	620	620	607	961	842	968	772	645	302	465
Morgan	882	924	744	226	1,217	1,180	501	655	657	1,637	889	1,623	798	999	618	615
Otero	877	1,022	948	287	1,233	1,078	798	655	657	1,696	1,131	1,688	1,023	1,255	431	661
Ouray	30	61	95	10	58	57	40	74	81	81	91	80	81	63	20	52
Park	88	119	143	63	124	142	63	137	127	179	175	176	159	121	63	98
Phillips	171	262	197	43	334	311	136	153	159	424	212	420	186	279	137	136
Pitkin	33	44	283	100	27	38	248	248	220	60	340	60	287	50	13	229
Prowers	608	340	412	316	451	397	701	550	526	849	674	843	688	615	13	361
Pueblo	2,586	2,074	6,221	3,147	3,153	3,083	1,891	7,019	6,938	4,279	8,479	4,309	8,179	3,063	1,275	5,248
Rio Blanco	196	258	234	47	199	199	318	195	150	379	245	364	213	266	113	122
Rio Grande	261	233	328	73	357	288	194	292	271	450	362	447	325	303	148	217
Routt	205	355	905	301	286	298	293	868	762	469	1,078	467	989	329	154	560
Saguache	76	113	151	42	129	128	65	128	110	162	165	161	152	111	62	112
San Juan	23	58	99	17	64	57	24	85	70	77	102	78	96	64	16	66
San Miguel	36	105	264	37	81	87	55	196	168	124	274	121	243	81	32	152
Sedgwick	91	137	146	37	136	140	102	117	118	199	155	201	138	201	53	79
Summit	63	75	146	37	95	82	40	137	156	112	198	112	173	83	50	120
Teller	68	124	669	170	150	124	61	532	608	162	740	163	691	118	38	406
Washington	207	253	246	70	341	303	138	236	217	421	287	419	264	301	131	148
Weld	2,522	1,755	2,121	701	3,148	2,920	1,493	2,021	2,125	3,892	2,594	3,769	2,428	2,813	1,006	1,547
Yuma	246	358	637	175	409	388	179	508	519	520	747	529	688	359	184	434
	48,716	43,052	84,919	33,262	61,303	59,584	32,806	84,549	84,942	81,267	106,156	81,726	98,527	50,990	30,796	66,888

VE OFFICERS AND REGENTS OF THE UNIVERSITY OF COLORADO

ATTORNEY
GENERAL

SUPERINTENDENT
OF PUBLIC
INSTRUCTION

REGENTS OF THE
UNIVERSITY OF COLORADO

Duke W. Dunbar—R.

John W. Metzger—D.

Nettie S. Freed—R.

Ralph L. Carr—R.

Robert R. Knowles—R.

H. Vance Austin—D.

Grace Keenehan—D.

Frank F. Lynch, Jr.—D.

1,328	1,210	1,304	1,289	1,077	937	614	685	Adams
383	903	390	387	298	676	513	494	Alamosa
1,555	1,945	1,551	1,523	1,293	1,413	991	1,228	Arapahoe
84	116	86	88	64	87	58	65	Archuleta
434	332	446	498	362	234	166	64	Baca
305	375	335	332	247	322	188	238	Bent
2,594	2,374	2,617	2,606	2,285	1,794	1,356	1,417	Boulder
317	636	324	317	250	449	364	433	Chaffee
411	155	431	421	307	119	92	75	Cheyenne
277	260	276	279	222	189	158	122	Clear Creek
1,094	410	1,121	1,393	751	323	244	223	Conejos
255	463	256	282	154	371	231	170	Costilla
323	299	331	328	256	221	147	161	Crowley
328	148	348	367	223	131	97	73	Custer
1,029	875	1,052	1,007	803	641	486	454	Delta
27,844	44,148	27,433	27,545	22,776	28,504	23,792	27,773	Denver
113	214	118	129	69	165	107	93	Dolores
426	275	358	358	293	219	161	131	Douglas
215	367	205	223	166	242	209	214	Eagle
423	387	440	454	319	209	174	156	Elbert
5,124	3,127	5,083	5,075	4,283	2,236	1,665	1,876	El Paso
1,673	1,543	1,713	1,669	1,291	1,045	845	939	Fremont
746	589	765	735	565	432	321	312	Garfield
78	175	81	85	64	127	109	86	Gilpin
232	142	240	245	198	99	70	77	Grand
201	374	206	211	175	289	228	217	Gunnison
77	46	76	73	53	31	20	22	Hinsdale
368	1,206	358	423	284	954	737	732	Huerfano
162	129	175	180	133	95	66	59	Jackson
3,932	2,367	3,941	3,811	3,254	1,637	1,261	1,419	Jefferson
132	100	135	128	96	81	66	61	Kiowa
816	224	836	810	600	155	124	109	Kit Carson
181	757	161	180	140	578	421	504	Lake
881	653	882	920	651	500	371	369	La Plata
2,969	1,348	3,021	2,888	2,443	942	700	715	Larimer
919	3,397	921	903	651	2,593	1,729	1,843	Las Animas
582	464	566	598	460	351	262	228	Lincoln
1,108	767	1,075	977	1,098	732	360	423	Logan
1,584	1,976	1,607	1,529	1,310	1,357	974	1,140	Mesa
46	87	48	45	35	64	40	40	Mineral
548	388	567	535	433	273	226	218	Moffat
513	573	514	513	352	380	265	301	Montezuma
948	703	983	973	686	488	392	348	Montrose
1,585	766	1,508	1,455	1,172	533	350	329	Morgan
1,627	936	1,636	1,661	1,309	738	500	559	Otero
80	81	79	81	62	62	49	38	Ouray
173	147	182	176	143	114	86	68	Park
399	169	388	384	327	143	100	72	Phillips
56	277	59	65	38	207	164	138	Pitkin
823	575	855	811	633	426	295	322	Prowers
4,205	7,748	4,373	3,942	3,277	5,645	4,496	5,139	Pueblo
370	203	367	372	290	141	106	110	Rio Blanco
437	306	441	426	341	236	161	186	Rio Grande
449	391	456	458	381	670	480	480	Routt
159	136	162	158	130	115	69	70	Saguache
77	85	78	77	63	68	54	40	San Juan
118	230	123	123	91	165	146	94	San Miguel
195	127	204	203	161	132	54	64	Sedgwick
110	155	117	119	90	130	91	94	Summit
159	655	161	167	124	511	342	366	Teller
415	253	404	379	327	178	160	119	Washington
3,862	2,304	3,684	3,632	3,319	1,669	1,199	1,254	Weld
523	626	509	500	391	421	296	249	Yuma
79,380	93,614	79,162	78,553	64,159	64,989	50,598	56,098	

ABSTRACT OF VOTES CAST AT A GENERAL ELECTION HELD ON TUESDAY, NOVEMBER 2, A. D. 1948, FOR PRESIDENTIAL ELECTORS, UN

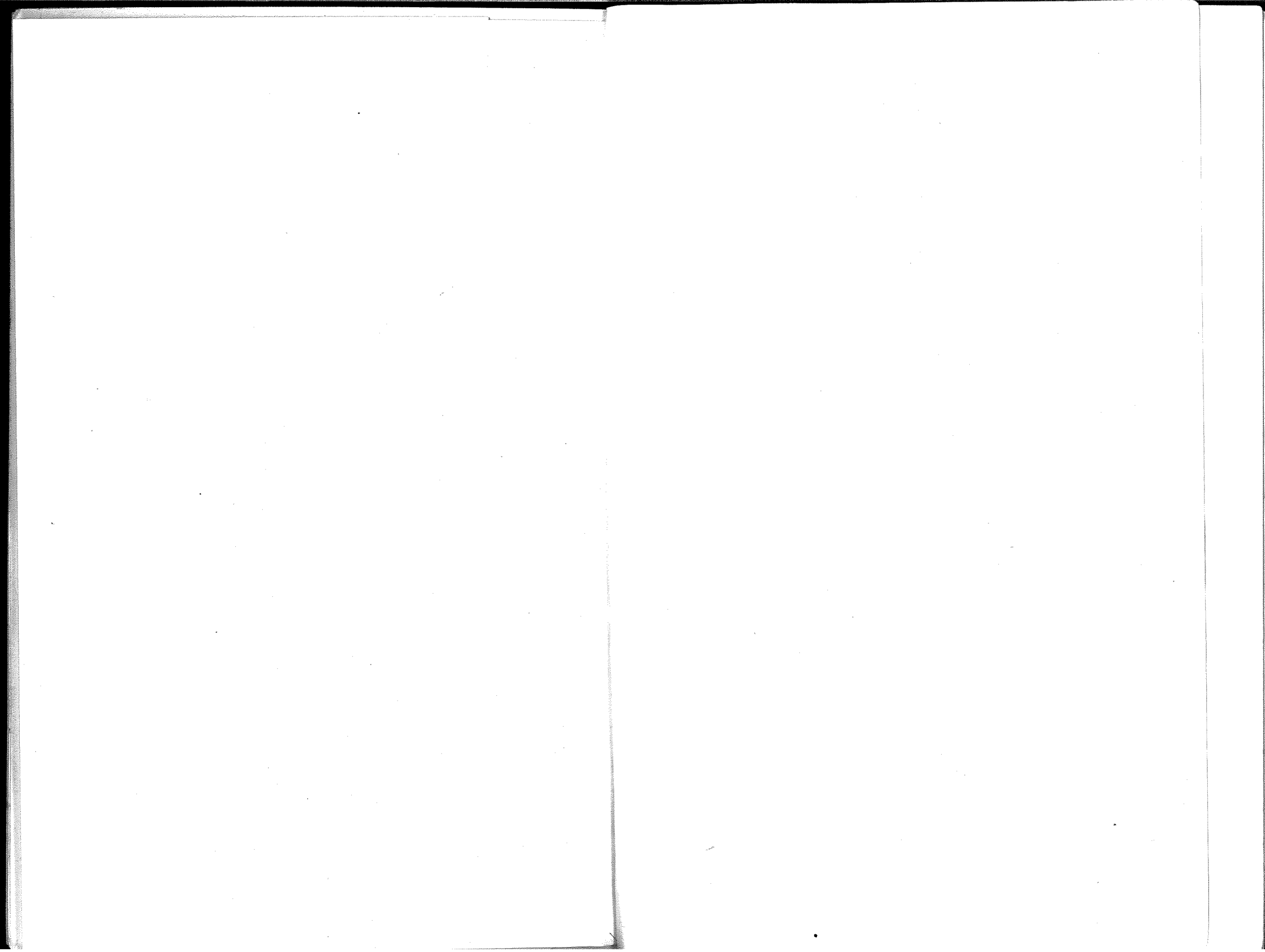
	PRESIDENT OF U. S.				U. S. SENATOR				JUSTICES OF THE SUPREME COURT				GOVERNOR			
	Thomas E. Dewey—R.	Harry S. Truman—D.	Farrell Dobbs—Soc. Workers	Edward A. Teicher—Soc.-Labor	Norman Thomas—Soc.	Henry A. Wallace—Prog.	Edwin C. Johnson—D.	Will F. Nicholson—R.	Joe Gurule—Prog.	Carle Whitehead—Soc.	H. Lawrence Hinkley—R.	E. V. Holland—D.	George A. Luxford—R.	O. Otto Moore—D.	David A. Hamill—R.	Lee Knous—D.
Adams	4,419	6,240	9	4	20	99	7,864	2,862	41	21	4,269	5,550	4,235	5,224	3,247	7,423
Alamosa	1,950	2,395	4	1	4	24	3,087	1,270	48	2	1,900	2,287	1,637	2,071	1,523	2,869
Arapahoe	6,962	7,943	33	7	44	122	10,511	4,495	41	46	6,446	7,395	6,513	7,069	4,699	10,298
Archuleta	479	597	3	0	1	4	679	332	6	3	419	502	381	373	378	632
Baca	1,260	1,368	0	0	0	21	1,678	947	5	4	1,177	1,092	953	956	1,150	1,494
Bent	1,296	1,658	1	1	10	18	1,959	974	5	5	1,244	1,528	1,036	1,469	1,007	1,968
Boulder	10,335	8,792	1	1	212	488	12,265	7,178	286	95	9,725	8,772	8,892	8,484	6,693	12,975
Chaffee	1,476	2,065	7	0	7	31	2,621	980	4	3	1,350	2,024	1,278	1,847	1,093	2,473
Cheyenne	713	657	1	0	2	13	859	503	1	1	702	537	621	583	596	781
Clear Creek	836	810	0	1	1	12	1,064	592	3	10	788	736	808	696	569	1,093
Conejos	1,532	2,236	12	14	8	25	2,479	1,070	120	12	1,743	1,526	1,498	1,331	1,514	2,164
Costilla	921	1,563	8	13	8	19	1,659	816	18	5	941	1,299	811	1,236	931	1,533
Crowley	1,027	1,004	1	1	3	4	1,384	656	1	4	961	934	863	903	771	1,254
Custer	547	384	0	0	2	10	543	388	2	1	525	349	427	315	452	485
Delta	3,158	3,171	3	0	20	117	4,251	2,176	46	5	2,910	2,932	2,599	2,549	2,318	4,124
Denver	76,364	89,489	62	89	643	2,420	114,462	52,455	944	670	69,816	85,225	76,118	84,181	46,128	117,265
Dolores	352	435	0	0	0	14	563	201	3	3	284	362	241	280	244	540
Douglas	979	767	0	0	3	5	1,111	650	3	3	951	678	908	593	809	953
Eagle	738	1,008	2	1	2	80	1,322	456	57	3	729	961	659	835	533	1,287
Elbert	1,155	873	1	0	1	19	1,288	750	1	3	1,091	754	965	666	958	1,062
El Paso	15,705	12,291	9	8	148	258	17,213	11,076	98	77	15,154	11,870	13,029	11,747	12,134	16,126
Fremont	4,421	4,077	7	1	26	95	5,528	3,095	26	13	4,050	3,919	3,407	3,839	3,303	5,297
Garfield	2,416	2,364	0	1	4	37	3,183	1,632	16	3	2,179	2,185	2,040	2,008	1,827	2,959
Gilpin	302	296	0	0	3	10	420	192	1	3	255	285	264	278	224	428
Grand	777	763	0	2	8	12	1,068	517	5	5	759	695	740	565	531	1,035
Gunnison	1,103	1,326	2	2	5	56	1,782	699	16	3	1,012	1,240	953	1,142	751	1,796
Hinsdale	133	75	0	0	0	0	131	75	0	0	125	68	115	60	80	127
Huerfano	1,841	3,448	4	1	115	0	3,918	1,464	54	2	1,727	3,299	1,489	3,167	1,569	3,773
Jackson	327	291	0	0	0	0	428	193	1	0	309	256	297	223	242	371
Jefferson	9,903	9,145	2	1	78	179	12,681	6,567	71	55	9,101	8,692	9,058	8,501	6,528	12,728
Kiowa	758	659	1	0	2	11	837	569	5	1	702	559	559	553	618	797
Kit Carson	1,873	1,281	1	0	9	17	1,789	1,377	1	9	1,747	1,036	1,517	988	1,447	1,744
Lake	838	1,581	2	2	4	75	1,907	567	30	5	763	1,565	748	1,389	606	1,888
La Plata	2,735	2,536	3	4	4	78	3,366	1,900	33	3	2,473	3,297	2,230	1,955	2,251	3,051
Larimer	9,813	7,062	5	3	63	83	10,336	6,675	35	27	9,282	6,655	8,382	6,180	7,032	9,910
Las Animas	3,452	7,586	13	8	18	133	8,182	2,633	271	20	3,452	6,968	2,852	6,707	2,940	8,053
Lincoln	1,271	1,231	1	0	3	10	1,623	893	3	3	1,226	1,086	1,076	947	1,013	1,474
Logan	3,223	3,179	4	0	9	33	4,201	2,357	8	3	1,406	1,880	1,768	2,292	3,164	3,264
Mesa	6,586	8,401	7	5	49	137	10,806	4,374	27	29	6,120	7,964	5,470	7,165	4,823	10,222
Mineral	144	190	0	0	1	23	255	78	0	0	129	179	127	157	107	227
Moffat	1,261	1,101	1	5	23	21	1,727	661	3	4	1,197	997	1,120	853	940	1,411
Montezuma	1,630	1,653	1	2	6	21	1,727	838	19	8	1,385	1,478	1,181	1,252	994	2,241
Montrose	2,473	2,544	0	3	20	70	3,327	1,669	27	12	2,345	2,303	2,073	2,043	1,712	3,411
Morgan	3,417	2,912	5	3	8	39	4,092	2,274	14	7	3,348	2,382	2,383	2,452	2,679	3,646
Otero	4,311	8,640	2	2	16	61	5,531	3,155	38	5	4,154	4,008	3,555	3,677	3,269	5,342
Ouray	574	461	1	0	7	27	683	258	3	4	524	446	474	369	363	691
Park	637	505	0	0	1	9	732	443	7	2	604	475	587	426	487	665
Phillips	1,076	932	1	1	7	32	1,365	677	0	2	1,169	720	962	696	899	1,130
Pitkin	319	409	0	0	2	13	538	190	6	5	237	396	204	345	189	543
Prowers	2,505	2,497	3	2	18	32	2,938	2,105	16	11	2,442	2,311	2,060	2,165	2,042	3,020
Pueblo	12,756	21,637	6	8	62	572	24,924	9,904	336	54	12,911	21,108	11,565	19,931	10,854	24,080
Rio Blanco	981	752	0	0	1	17	1,082	663	3	0	912	668	832	504	781	961
Rio Grande	2,049	1,814	2	2	3	6	2,428	1,466	39	5	2,011	1,740	1,723	1,425	1,624	2,294
Routt	1,492	2,088	6	0	9	56	2,850	807	13	4	1,347	2,007	1,260	1,741	993	2,678
Saguache	914	1,009	0	0	4	10	1,300	600	12	7	928	862	778	717	781	1,128
San Juan	329	348	1	0	1	21	488	203	12	1	305	364	272	314	250	451
San Miguel	451	613	0	0	15	10	821	262	4	1	389	600	344	478	273	800
Sedgwick	1,020	834	0	1	2	10	1,158	697	5	4	1,010	706	901	695	828	1,036
Summit	292	378	0	0	3	3	493	174	1	2	273	323	269	308	181	486
Teller	748	779	0	0	2	16	1,136	411	3	4	609	769	553	749	483	1,016
Washington	1,636	1,304	3	0	4	11	1,750	1,202	4	7	1,550	1,105	1,377	972	1,515	1,426
Weld	12,446	10,934	11	12	65	171	15,209	8,246	76	38	12,219	9,909	11,270	9,483	9,037	14,226
Yuma	2,277	1,907	1	5	6	17	2,509	1,577	4	2	2,218	1,923	1,909	1,284	1,971	3,217
	239,714	267,288	228	214	1,678	6,115	340,719	165,069	2,981	1,352	226,949	245,441	216,816	234,401	168,928	332,752

EXECUTIVE OFFICERS AND REGENTS OF THE UNIVERSITY OF COLORADO

STATE TREASURER		ATTORNEY GENERAL		SUPERINTENDENT OF PUBLIC INSTRUCTION		REGENTS OF THE UNIVERSITY OF COLORADO					
	Homer F. Bedford—D.	Duke W. Dunbar—R.	John W. Metzger—D.	Samuel D. Menin—Prog.	Nettie S. Freed—R.	Essie Bell Marple—D.	H. Vance Austin—D.	Ralph L. Carr—R.	Robert R. Knowles—R.	Frank P. Lynch, Jr.—D.	
19	6,822	4,222	6,059	103	4,809	5,528	5,617	5,037	4,104	4,928	Adams
36	2,668	1,359	2,380	33	2,168	2,093	2,172	2,362	1,793	1,871	Alamosa
82	8,844	6,677	7,653	141	7,551	6,796	7,350	7,488	6,506	6,571	Arapahoe
90	567	407	516	4	480	474	458	515	351	413	Archuleta
27	1,355	1,216	1,183	15	1,336	1,126	1,049	1,299	1,066	982	Baca
20	1,777	1,275	1,542	18	1,564	1,323	1,429	1,386	1,176	1,322	Bent
35	11,140	9,187	9,234	495	10,894	7,991	8,954	11,021	9,215	7,420	Boulder
26	2,355	1,889	2,045	19	1,515	1,908	1,866	1,608	1,308	1,802	Chaffee
99	665	720	525	7	788	508	512	755	632	450	Cheyenne
81	941	792	795	14	891	717	695	957	776	647	Clear Creek
53	1,825	1,774	1,622	65	1,940	1,522	1,307	2,202	1,617	1,217	Conejos
83	1,470	1,006	1,413	11	1,169	1,361	1,317	1,073	877	1,279	Costilla
41	1,079	987	930	6	1,096	848	862	1,104	905	830	Crowley
25	427	521	364	7	591	309	351	554	452	301	Custer
83	3,618	3,017	3,011	70	3,213	2,856	2,912	3,120	2,657	2,670	Delta
45	104,143	73,649	88,791	2,417	79,650	79,940	82,890	86,198	69,889	77,054	Denver
78	428	287	374	13	310	389	338	340	253	284	Dolores
60	840	945	707	8	1,011	661	634	1,019	906	561	Douglas
86	1,206	729	983	48	807	940	927	842	683	827	Eagle
76	962	1,077	802	14	1,116	838	741	1,133	1,019	637	Elbert
26	14,127	14,638	12,505	252	15,514	11,875	11,437	16,095	14,502	10,472	El Paso
55	4,644	4,096	4,083	73	4,428	3,862	3,808	4,393	3,747	3,601	Fremont
84	2,709	2,335	2,232	33	2,523	2,090	2,108	2,482	2,129	1,790	Garfield
13	368	261	295	7	297	279	255	337	247	237	Gilpin
20	908	808	688	7	868	649	624	918	718	544	Grand
33	1,568	1,010	1,309	27	1,135	1,231	1,210	1,237	1,011	1,062	Gunnison
02	97	126	72	1	120	84	66	128	117	63	Hinsdale
93	3,613	1,770	3,431	58	1,823	3,149	3,200	2,064	1,625	3,132	Huerfano
80	346	313	274	3	339	254	256	343	299	226	Jackson
65	10,859	9,367	9,040	187	9,789	8,317	8,651	10,279	9,081	7,807	Jefferson
49	729	745	593	10	773	567	573	727	656	530	Kiowa
91	1,305	1,863	1,055	13	1,927	1,079	1,105	1,851	1,560	889	Kit Carson
59	1,757	796	1,547	39	856	1,525	1,451	995	744	1,392	Lake
56	2,874	2,565	2,444	41	2,693	2,335	2,266	2,782	2,332	2,085	La Plata
78	8,317	9,312	6,882	107	10,037	6,189	6,735	9,947	8,856	5,734	Larimer
47	7,716	3,249	7,161	129	3,789	6,695	6,771	3,963	3,156	6,453	Las Animas
67	1,386	1,252	1,133	8	1,319	1,101	1,058	1,359	1,135	987	Lincoln
94	3,565	3,303	2,771	30	3,570	2,531	3,344	2,902	4,169	1,626	Logan
27	9,204	6,162	8,260	124	7,076	7,630	8,205	6,210	5,662	7,611	Mesa
02	218	132	183	4	157	167	158	172	126	146	Mineral
58	1,223	1,180	1,060	20	1,285	1,002	1,051	1,319	1,047	818	Moffat
98	1,882	1,416	1,577	19	1,471	1,566	1,369	1,639	1,238	1,244	Montezuma
13	2,818	2,429	2,345	51	2,534	2,307	2,223	2,641	2,190	1,892	Montrose
52	3,315	3,294	2,691	41	3,741	2,250	2,433	3,678	3,085	2,032	Morgan
56	4,844	4,258	3,996	43	4,729	3,578	3,963	4,510	3,848	3,623	Otero
58	548	531	466	8	563	437	414	603	492	359	Ouray
44	600	637	494	8	653	477	468	660	590	431	Park
24	1,031	1,106	755	28	1,163	737	871	1,098	1,010	634	Phillips
16	477	241	414	13	359	342	372	307	239	331	Pitkin
46	2,667	2,529	2,290	28	2,753	2,057	2,168	2,639	2,264	1,941	Prowers
11	22,921	12,761	20,763	483	18,890	15,884	19,887	15,080	12,229	19,753	Pueblo
99	871	890	749	6	995	660	612	998	886	536	Rio Blanco
76	2,078	1,978	1,794	21	2,104	1,651	1,525	2,242	1,867	1,454	Rio Grande
74	2,386	1,369	2,062	49	1,553	1,924	1,871	1,608	1,338	1,689	Routt
47	1,022	927	885	10	1,007	856	786	1,029	838	743	Saguache
67	424	311	365	13	333	347	316	394	305	283	San Juan
12	730	394	606	15	422	602	529	511	365	461	San Miguel
58	970	979	788	9	1,039	722	1,100	916	777	612	Sedgwick
18	424	276	348	3	309	324	299	317	265	294	Summit
17	956	609	785	17	679	718	714	771	555	640	Teller
55	1,410	1,592	1,112	17	1,721	1,087	1,119	1,647	1,417	951	Washington
45	12,497	12,101	10,217	119	13,340	9,206	10,039	13,167	11,685	8,695	Weld
22	2,014	2,207	1,559	20	2,390	1,452	1,570	2,301	1,927	1,243	Yuma
95	297,550	229,854	255,063	5,702	255,965	229,928	241,361	259,272	218,514	219,112	

ABSTRACT OF VOTES CAST AT A GENERAL ELECTION HELD ON TUESDAY, NOVEMBER 2ND, A. D. 1948, FOR INITIATED AND REFERRED MEASURES

	NO. 1 REORGANIZATION OF THE STATE DEPART- MENT OF EDUCATION		NO. 2 PARI MUTUEL LAW		NO. 3 LOCAL OPTION AMENDMENT		N. 4 \$55.00 OLD AGE PENSION AMENDMENT	
	Yes	No	Yes	No	Yes	No	Yes	No
Adams	4,138	2,655	5,243	3,186	2,382	6,986	3,407	5,936
Alamosa	1,711	969	1,901	1,293	1,023	2,760	1,321	2,521
Arapahoe	7,918	3,313	7,655	5,531	3,448	10,006	4,760	9,065
Archuleta	207	260	325	239	133	639	312	568
Baca	607	685	850	973	1,212	961	821	1,299
Bent	963	976	1,015	1,254	1,018	1,571	786	1,937
Boulder	11,020	4,603	8,475	8,647	5,458	13,113	7,309	11,330
Chaffee	1,455	1,134	1,760	1,100	547	2,702	782	2,541
Cheyenne	413	343	478	468	325	717	356	752
Clear Creek	782	387	877	459	274	1,162	525	947
Conejos	1,037	655	1,425	821	802	2,099	979	2,018
Costilla	567	276	735	253	308	1,662	354	1,700
Crowley	579	698	919	630	671	1,025	576	1,225
Custer	283	251	486	210	136	648	233	560
Delta	2,620	1,578	2,429	2,548	2,023	3,886	1,829	4,014
Denver	94,605	39,411	85,808	64,457	32,616	118,571	58,735	97,380
Dolores	208	141	274	218	209	368	246	319
Douglas	571	549	908	485	339	1,112	621	825
Eagle	633	475	790	518	275	1,258	447	1,059
Elbert	523	795	816	751	629	1,083	715	993
El Paso	11,409	10,866	13,296	11,882	7,959	18,073	10,052	16,649
Fremont	2,976	2,596	3,831	2,984	2,319	5,652	2,027	5,645
Garfield	2,065	1,114	2,315	1,316	862	3,294	1,310	2,873
Gilpin	174	197	316	155	63	458	140	390
Grand	636	404	851	454	272	1,085	566	809
Gunnison	983	640	1,198	698	320	1,814	843	1,305
Hinsdale	75	53	105	47	40	122	85	88
Huerfano	1,405	967	2,082	770	582	4,084	835	3,926
Jackson	287	108	332	147	129	362	268	243
Jefferson	10,428	4,199	10,137	6,953	3,999	13,491	6,673	11,100
Kiowa	449	387	531	542	571	626	448	745
Kit Carson	674	969	1,013	1,101	1,028	1,668	887	1,566
Lake	1,069	479	1,191	602	276	1,888	668	1,406
La Plata	2,049	1,191	2,610	1,423	1,023	3,708	1,772	2,947
Larimer	8,539	4,058	6,221	8,462	6,328	9,332	6,421	9,401
Las Animas	4,368	1,884	5,213	2,010	1,714	7,853	2,338	7,527
Lincoln	631	1,094	976	1,009	636	1,494	672	1,465
Logan	2,302	1,935	2,372	2,788	2,212	3,526	2,426	3,339
Mesa	7,394	3,613	7,029	5,341	4,109	9,833	4,396	9,610
Mineral	97	80	134	80	46	200	57	204
Moffat	805	739	952	859	450	1,707	768	1,288
Montezuma	1,051	765	1,399	909	630	1,887	991	1,549
Montrose	1,816	1,323	2,054	1,887	1,627	3,025	1,661	2,913
Morgan	2,888	1,533	2,791	2,377	2,078	3,360	2,090	3,529
Otero	3,845	1,891	3,327	3,649	3,398	4,434	3,042	4,719
Ouray	366	279	468	309	184	697	326	546
Park	441	300	627	277	149	849	336	677
Phillips	684	579	702	870	784	1,017	786	1,001
Pitkin	261	158	299	210	92	551	229	411
Prowers	1,879	1,532	2,149	1,958	1,873	2,662	1,433	3,174
Pueblo	17,444	9,834	21,595	8,761	7,697	24,968	10,441	22,474
Rio Blanco	512	490	871	410	225	1,207	615	761
Rio Grande	1,476	873	1,257	1,460	1,053	2,310	1,386	2,097
Routt	1,307	815	1,517	1,134	716	2,333	1,107	1,959
Saguache	637	417	768	537	401	1,260	583	1,135
San Juan	190	191	308	167	73	515	205	355
San Miguel	289	316	480	271	160	730	309	577
Sedgwick	680	473	809	630	541	1,112	621	975
Summit	219	139	321	157	81	478	204	362
Teller	488	441	869	333	200	1,143	329	1,069
Washington	803	1,017	1,126	1,075	896	1,583	971	1,473
Weld	9,835	5,824	7,607	10,424	7,469	13,757	8,160	12,464
Yuma	1,334	1,137	1,153	1,823	1,626	1,854	1,440	1,977
	238,100	128,054	238,371	183,292	120,799	334,331	166,031	295,712



CONGRESSMAN, FIRST CONGRESSIONAL DISTRICT

County	John A. Carroll —D		Christopher F. Cusack —R	
	P. E.	G. E.	P. E.	G. E.
Denver	45,797	106,096	25,624	57,541

CONGRESSMAN, SECOND CONGRESSIONAL DISTRICT

County	William S. Hill —R		George L. Bickel —D	
	P. E.	G. E.	P. E.	G. E.
Adams	1,373	4,669	1,167	5,918
Arapahoe	1,615	7,017	1,958	7,594
Boulder	2,525	9,061	2,231	10,330
Cheyenne	479	780	156	531
Clear Creek	294	888	254	735
Douglas	382	1,049	261	647
Elbert	453	1,183	298	750
Gilpin	84	298	168	293
Jefferson	3,992	9,344	2,354	9,163
Kit Carson	899	1,770	219	1,311
Larimer	3,070	9,730	1,343	6,854
Lincoln	617	1,300	444	1,142
Logan	1,147	3,386	780	2,901
Morgan	1,634	3,426	746	2,763
Phillips	429	893	168	1,094
Sedgwick	210	1,078	129	738
Washington	426	1,686	237	1,165
Weld	3,976	12,285	2,318	10,728
Yuma	523	2,025	625	1,922
	24,128	71,868	15,856	66,579

CONGRESSMAN, THIRD CONGRESSIONAL DISTRICT

County	J. Edgar Chenoweth —R		John H. Marsalis —D	
	P. E.	G. E.	P. E.	G. E.
Alamosa	386	2,166	853	2,169
Baca	530	1,491	344	1,068
Bent	349	1,442	376	1,465
Conejos	1,158	1,921	405	1,602
Costilla	273	1,030	467	1,419
Crowley	347	1,117	315	869
Custer	350	593	154	313
El Paso	5,385	16,613	3,131	11,157
Fremont	1,719	4,586	1,409	3,851
Huerfano	390	1,997	1,120	3,291
Kiowa	138	816	97	566
Las Animas	998	5,074	3,391	6,000
Mineral	48	172	84	156
Otero	1,746	4,623	963	3,854
Prowers	836	2,728	567	2,219
Pueblo	4,302	12,763	8,117	22,102
Rio Grande	460	2,353	308	1,512
Saguache	172	1,073	135	791
Teller	160	754	630	710
	19,747	63,312	22,866	65,114

CONGRESSMAN, FOURTH CONGRESSIONAL DISTRICT

County	Robert F. Rockwell —R		Wayne N. Aspinall —D	
	P. E.	G. E.	P. E.	G. E.
Archuleta	94	559	113	440
Chaffee	381	1,488	613	1,997
Delta	1,099	3,169	929	3,242
Dolores	143	393	206	357
Eagle	230	861	378	946
Garfield	811	2,529	639	2,235
Grand	258	860	140	688
Gunnison	232	1,206	410	1,257
Hinsdale	82	142	45	66
Jackson	180	368	111	236
Lake	179	966	759	1,487
La Plata	958	2,939	644	2,258
Mesa	1,676	5,313	2,139	9,735
Moffat	581	1,430	392	891
Montezuma	576	1,844	538	1,348
Montrose	1,046	2,810	727	2,242
Ouray	83	601	86	424
Park	183	644	152	491
Pitkin	66	390	257	352
Rio Blanco	392	1,054	203	648
Routt	486	1,441	908	2,161
San Juan	72	369	83	321
San Miguel	131	518	231	543
Summit	115	312	145	330
	10,054	32,206	10,848	34,695

STATE SENATOR, FIRST SENATORIAL DISTRICT, DENVER COUNTY

	P. E.	G. E.
Bishop, Neal D.—D.....	40,273	98,879
Blake, Claude W.—R.....	25,249	69,435
Bresnahan, C. A.—R.....	17,288
Dunklee, Donald P.—D.....	40,646	98,574
Evans, George T.—R.....	20,111	60,719
*Fritts, C. A.—R.....	19,336
Henry, Lawrence M.—D.....	40,501	96,170
Jacobson, Olof H.—R.....	21,476	62,326
Mazzula, Fred M.—R.....	6,651	49,719
McNichols, Stephen L. R.—D.....	41,466	94,994
Alberg, Gus—Prog.....	2,078
Payne, Mildora—Prog.....	1,724
Trujillo, Robert—Com.....	911
Wiley, Charles R.—Prog.....	1,798

*Withdrew after Primary Election.

STATE SENATOR, SECOND SENATORIAL DISTRICT

County	Peter Culig, Jr. —D		W. I. Sanford —R	
	P. E.	G. E.	P. E.	G. E.
Pueblo	7,515	21,587	3,961	12,975

STATE SENATOR, THIRD SENATORIAL DISTRICT

County	Vernon A. Cheever —R		William R. Franklin —D	
	P. E.	G. E.	P. E.	G. E.
El Paso.....	5,096	16,065	2,932	11,315

STATE SENATOR, FOURTH SENATORIAL DISTRICT

County	Ben Veltri —D		L. T. Winger, Sr. —R	
	P. E.	G. E.	P. E.	G. E.
Las Animas	3,611	6,909	965	4,059

STATE SENATOR, FIFTH SENATORIAL DISTRICT

County	Wm. G. Gambill —D		Theo. G. Lashley —R	
	P. E.	G. E.	P. E.	G. E.
Boulder	2,296	10,845	2,577	8,089

STATE SENATOR, SEVENTH SENATORIAL DISTRICT

County	Wm. Albion Carlson —R	
	P. E.	G. E.
Weld	3,604	15,206

STATE SENATOR, EIGHTH SENATORIAL DISTRICT

County	Harold Ward Gardner —R		O. A. Saunders —R		Robert F. Metzler —D		Ed Moder —D	
	P. E.	G. E.	P. E.	G. E.	P. E.	G. E.	P. E.	G. E.
Douglas	231	219	1,050	291	605			
Jefferson	1,944	2,459	9,550	2,247	9,088			
	2,175	2,678	10,600	2,538	9,693			

STATE SENATOR, NINTH SENATORIAL DISTRICT

County	Lawrence Oliver —D		Edwin A. Rogers —R		C. L. Canda, Jr. —R	
	P. E.	G. E.	P. E.	G. E.	P. E.	G. E.
Custer	148	364	250	566	201	
Fremont	1,538	4,228	1,307	4,073	554	
	1,686	4,592	1,557	4,639	755	

STATE SENATOR, ELEVENTH SENATORIAL DISTRICT

County	Daniel I. J. Thornton —R	
	P. E.	G. E.
Delta	1,019	4,586
Gunnison	227	1,875
Hinsdale	78	165
	1,324	6,626

STATE SENATOR, THIRTEENTH SENATORIAL DISTRICT

County	Charles P. Murphy —R	
	P. E.	G. E.
Grand	255	1,221
Jackson	187	556
Moffat	545	1,815
Rio Blanco	339	1,288
Routt	467	2,401
	1,793	7,281

STATE SENATOR, NINETEENTH SENATORIAL DISTRICT

County	T. H. Akin —D		Tom Kimball —R		Harry Rogers —R	
	P. E.	G. E.	P. E.	G. E.	P. E.	G. E.
Archuleta	105	413	56	537	47	
La Plata	669	2,148	803	3,045	301	
Montezuma	657	1,979	76	1,227	574	
San Juan	83	279	67	418	14	
	1,514	4,819	1,002	5,227	936	

STATE SENATOR, TWENTY-FIRST SENATORIAL DISTRICT

County	Robert A. Theobald —D		Roy Burkett —R	
	P. E.	G. E.	P. E.	G. E.
Eagle	350	1,106	207	651
Garfield	592	2,621	762	1,989
Lake	811	1,677	178	760
Pitkin	276	468	55	227
Summit	146	313	115	356
	2,175	6,185	1,317	3,983

STATE SENATOR, TWENTY-SECOND SENATORIAL DISTRICT

County	La Roy H. Purdy —D		Richard H. Simon —R	
	P. E.	G. E.	P. E.	G. E.
Arapahoe	1,851	7,481	1,488	6,899
Elbert	277	779	403	1,084
	2,128	8,260	1,891	7,983

STATE SENATOR, TWENTY-THIRD SENATORIAL DISTRICT

County	James B. Ryan —R	
	P. E.	G. E.
Crowley	328	1,302
Otero	1,675	6,039
	2,003	7,341

STATE SENATOR, TWENTY-FOURTH SENATORIAL DISTRICT

County	Clifford J. Gobble —D		Willard B. Preston —R	
	P. E.	G. E.	P. E.	G. E.
Adams	1,229	6,187	1,326	4,232
Morgan	664	2,549	1,508	3,502
	1,893	8,736	2,834	7,734

REPRESENTATIVES, THIRTY-SEVENTH GENERAL ASSEMBLY

ADAMS COUNTY

	P. E.	G. E.
Wells, J. Wm.—D	1,170	5,731
Krogh, Alfred—R	1,306	4,755

ALAMOSA AND COSTILLA COUNTIES

County	Louis F. Higel —D		Floyd W. Skelton —R	
	P. E.	G. E.	P. E.	G. E.
Alamosa	970	2,586	1,818	
Costilla	463	1,421	1,031	
	1,433	4,007	2,849	

ARAPAHOE AND ELBERT COUNTIES

County	Robert D. Blackman —D		I. F. Thorne —D		A. O. Hill —R		B. T. Worrall —R		Dewey Taft Lin-Jef G. E.	
	P. E.	G. E.	P. E.	G. E.	P. E.	G. E.	P. E.	G. E.	P. E.	G. E.
Arapahoe	1,753	7,835	1,592	6,944	1,513	6,546	1,306	5,459	1,210	
Elbert	259	629	231	520	369	1,079	441	1,301	185	
	2,012	8,464	1,823	7,464	1,882	7,625	1,747	6,760	1,395	

ARCHULETA AND CONEJOS COUNTIES

County	Earl H. Haynie —D		S. T. Parsons —R	
	P. E.	G. E.	P. E.	G. E.
Archuleta	103	490	86	495
Conejos	442	1,435	1,291	2,539
	545	1,925	1,377	3,034

BACA COUNTY

County	Warren O. Brown —R	
	P. E.	G. E.
Baca	521	2,036

BENT AND KIOWA COUNTIES

County	H. B. Amyx —D		Oakley Wade —R	
	P. E.	G. E.	P. E.	G. E.
Bent	370	1,180	341	1,729
Kiowa	109	802	130	607
	479	1,982	471	2,336

BOULDER COUNTY

County	P. E.	G. E.
Paddock, William L.—D	2,291	10,806
Steele, Leslie R.—R	2,476	10,862
Faulkner, Dean M.—R	2,414	10,674
Hedgecock, A. Glenn—Prog		2,122

CHAFFEE AND LAKE COUNTIES

County	Frank E. Kendrick, Jr. —D		Frank Fehling —R	
	P. E.	G. E.	P. E.	G. E.
Chaffee	1,776		321	1,763
Lake	1,530		181	948
	3,306		502	2,711

CHEYENNE AND LINCOLN COUNTIES

County	John E. Jacobs —D		V. H. Johnson —R	
	P. E.	G. E.	P. E.	G. E.
Cheyenne	171	666	485	692
Lincoln	450	1,188	588	1,183
	621	1,854	1,073	1,875

CLEAR CREEK, EAGLE, GILPIN, PITKIN AND SUMMIT COUNTIES

County	Frank P. Conroy —R		Ellis P. Lupton —D	
	P. E.	G. E.	P. E.	G. E.
Clear Creek	270	982	255	982
Eagle	204	698	341	1,084
Gilpin	81	244	174	345
Pitkin	51	264	257	432
Summit	114	256	155	396
	720	2,115	1,182	3,239

CROWLEY AND OTERO COUNTIES

County	James G. McConnell —D		Henry Bledsoe —R		Arlie M. Ward —R	
	P. E.	G. E.	P. E.	G. E.	P. E.	G. E.
Crowley	329	1,159	288	1,031	313	1,192
Otero	848	4,135	1,599	5,520	1,467	4,344
	1,177	5,294	1,887	6,551	1,780	5,536

CUSTER AND FREMONT COUNTIES

County	Curtis R. Hanawalt —D		Leonard M. Bentley —R		A. H. Sparks —R
	P. E.	G. E.	P. E.	G. E.	P. E.
Custer	144	326	218	573	179
Fremont	1,501	4,238	995	4,062	901
	1,645	4,564	1,213	4,635	1,080

DELTA COUNTY

County	Mark R. Clay —R	
	P. E.	G. E.
Delta	1,068	4,779

CITY AND COUNTY OF DENVER

County	P. E.	G. E.
Abernethy, O. A.—D	28,963	88,612
Anderson, William Ward—R	19,263	62,196
Armatas, N. Peter—D	11,587	
Arthur, L. James—R	18,334	57,928
Basil, George—D	18,979	
Bennett, Charles E.—D	27,471	93,542
Best, Whitman—R	21,038	67,966
Bezoff, Ben—D	28,239	94,301
Blake, Milton J.—R	22,131	68,012
Brewer, Howard J.—D	21,936	
Burch, Palmer L.—R	19,315	63,621
Chapman, Marshall Yale—R	14,003	
Chrysler, Harry F.—R	24,746	69,118
Cobb, Norman E.—D	31,140	93,266
Conrad, John E.—R	18,215	67,317
Cooke, Ellsworth E.—R	16,609	57,572
Crofts, Alfred—D	20,987	
Crowley, Clem—D	34,933	91,825
Davis, Vera Ames—D	20,933	
Eaton, Samuel J.—D	24,994	82,728
Gabbert, Noble V.—R	13,330	
Gableman, Cyprena Turcotte—D	8,280	
Gibson, Otis J.—R	19,606	65,379
Hamburg, Alfred J.—D	23,822	80,452
Hays, Frank L. Jr.—R	21,108	70,059
Jacobucci, Jean John—D	18,402	
Jennings, Henry L.—D	22,731	
Kelley, Andrew D.—D	31,422	81,331
Kokenzie, Henry F.—D	18,486	
Kramer, Shirley M.—D	25,910	80,019
Lewis, William A.—R	17,267	66,478
Lindquist, Oscar A.—R	18,809	66,604
Lloyd, Thomas L.—R	15,361	59,090
Macdonald, John D.—D	25,845	82,827
Maker, Joseph E.—R	10,397	
Mann, Earl W.—R	21,241	69,093
Milliken, Charles R.—R	21,826	63,979
Morton, James A.—R	14,176	
McCarthy, Thomas E.—R	15,173	
O'Connell, Max H.—R	10,658	
O'Neill, Francis P.—D	27,620	78,912
Pile, Roscoe—D	26,809	85,749
Quiatt, Marshall—D	31,324	89,182
Radetsky, James Bernard—D	26,783	88,985
Roth, Herrick S.—D	26,976	83,392
Schalow III, Berthold E.—R	5,755	
Collings, Lillian Grace—Const. O.		1,436
Gutmer, Joseph—Prog		2,239
Rogers, Tracy Roy—Com.		1,079
Sena, Alfonso—Prog		2,051
Stotts, Edna—Prog		2,055

DOLORES, MONTEZUMA AND SAN MIGUEL COUNTIES

County	Elizabeth E. Pellet —D		Homer H. Norton —R	
	P. E.	G. E.	P. E.	G. E.
Dolores	272	489	130	286
Montezuma	657	1,763	523	1,493
San Miguel	257	788	112	290
	1,186	3,040	765	2,069

DOUGLAS, PARK AND TELLER COUNTIES

County	H. N. Archambault —D		Homer E. Ira —R	
	P. E.	G. E.	P. E.	G. E.
Douglas	282	808	321	876
Park	139	546	144	585
Teller	662	961	139	454
	1,083	2,315	604	1,915

EL PASO COUNTY

County	P. E.	G. E.
Chamberlin, Harold J.—D	2,811	13,913
Nelson, Carroll A.—R	4,743	20,640
Phillips, John O.—R	4,685	20,405
Weissenfuh, Carl K.—R	4,469	15,616

GARFIELD AND RIO BLANCO COUNTIES

County	Mary L. Bell —D		Frank V. Kennedy —R	
	P. E.	G. E.	P. E.	G. E.
Garfield	585	2,310	776	2,036
Rio Blanco	201	643	386	1,094
	786	2,953	1,162	3,130

GRAND, MOFFAT AND ROUTT COUNTIES

County	Pat Magill, Jr. —D		Carl R. Taussig —R	
	P. E.	G. E.	P. E.	G. E.
Grand	152	786	257	770
Moffat	400	1,257	538	1,047
Route	960	2,588	467	1,030
	1,512	4,631	1,262	2,847

GUNNISON, HINSDALE AND SAGUACHE COUNTIES

County	Montana F. Smith —D		Rocco Santarelli —R	
	P. E.	G. E.	P. E.	G. E.
Gunnison	23	1,441	219	992
Hinsdale	15	146	71	65
Saguache	32	1,198	151	697
	70	2,785	441	1,754

HUERFANO COUNTY

County	P. E.	G. E.
Abe, Richard—D	1,386	3,518
Johnson, H. W. W. (Bill)—R	388	1,835

JACKSON AND LARIMER COUNTIES

County	E. J. (Ted) Herring —R		Victor Hanson —R		A. J. Becksted —R
	P. E.	G. E.	P. E.	G. E.	P. E.
Jackson	112	490	197	546	35
Larimer	2,386	13,283	2,251	13,191	1,394
	2,498	13,773	2,448	13,737	1,429

JEFFERSON COUNTY

County	P. E.	G. E.
Browne, John R.—R	2,733	9,073
Duke, Richard H.—R	1,526
Tinsley, Mansur—D	2,271	9,336

KIT CARSON COUNTY

County	P. E.	G. E.
Rhoades, Harley—R	800	1,905
Yersin, Bill—D	251	1,304

LAS ANIMAS COUNTY

County	P. E.	G. E.
Cordova, Tony—R	750	2,748
Horsman, John—D	3,353	7,777
Johnson, John—D	3,446	7,830
Salas, U. A. (Lee)—R	738	2,693

LA PLATA AND SAN JUAN COUNTIES

County	Charles E. Armstrong —D		R. Bruce Sullivan —R	
	P. E.	G. E.	P. E.	G. E.
La Plata	692	2,330	929	2,814
San Juan	88	404	77	297
	780	2,734	1,006	3,111

LOGAN COUNTY

County	Harley N. Beery —D		T. E. Breezley —R	
	P. E.	G. E.	P. E.	G. E.
Logan	860	3,282	1,140	3,076

MESA COUNTY

County	P. E.	G. E.
Barker, Tom—D	8,090
Beede, Wayne—D	1,674	7,571
Evans, Jack—R	1,541	7,022
Porter, Robert M.—R	1,338	5,713
Reeds, Frank H.—D	1,872

MINERAL AND RIO GRANDE COUNTIES

County	Elizabeth A. Conour —D		Jas. E. Ward —R	
	P. E.	G. E.	P. E.	G. E.
Mineral	88	181	45	148
Rio Grande	281	1,554	457	2,316
	369	1,735	502	2,464

MONTROSE AND OURAY COUNTIES

County	Jerry Foster —D		John L. Stivers —R	
	P. E.	G. E.	P. E.	G. E.
Montrose	721	2,677	990	2,276
Ouray	85	539	74	482
	806	3,216	1,064	2,758

MORGAN COUNTY

County	P. E.	G. E.
Ott, Millicent—D	687	2,527
Schooley, O. B.	1,504	3,540

PHILLIPS AND SEDGWICK COUNTIES

County	Merle Hiatt —D		Roy E. Owens —R	
	P. E.	G. E.	P. E.	G. E.
Phillips	158	688	425	1,278
Sedgwick	126	882	201	958
	284	1,570	626	2,236

PROWERS COUNTY

	P. E.	G. E.
Smartt, Hackett—D.....	612	3,105
Strain, Cora R.—R.....	823	1,887

PUEBLO COUNTY

	P. E.	G. E.
Craddock, Adeline B.—D.....	4,095	
Dameron, T. H.—D.....	6,022	22,009
Haynie, Gertrude C.—D.....	3,437	
Hobbs, R. F.—D.....	4,239	19,837
Hudspeth, Elizabeth—R.....	3,338	13,982
Husted, Frank—R.....	3,386	12,933
Leach, Richard F.—R.....	3,333	12,750
Long, Ward B.—R.....	2,067	
Taylor, Robert W.—R.....	3,745	13,364
Tyler, William H.—D.....	4,848	19,784
Utt, James A.—D.....	4,103	
Welsh, Wm. R., Jr.—D.....	4,348	19,887

WASHINGTON COUNTY

	Horace H. Holt		Roy R. Rowland	
County	P. E.	G. E.	P. E.	G. E.
Washington	398	1,588	263	1,255

WELD COUNTY

	P. E.	G. E.
Armstrong, Timothy H.—D.....	1,990	11,944
Christensen, Henry H.—D.....	1,994	10,732
DePaolo, Nick—D.....	1,904	8,624
Houtchens, Rodger I.—D.....	2,008	11,806
Kent, Elsie A.—R.....	3,584	10,438
Lamb, Allen B.—R.....	3,580	11,314
Ogilvie, James S.—R.....	3,648	11,936
Parham, James A.—R.....	3,554	10,495

YUMA COUNTY

	C. J. Bennett		Walter R. Stalker	
County	P. E.	G. E.	P. E.	G. E.
Yuma	555	1,599	502	2,288

DISTRICT JUDGES

FIRST DISTRICT

	Harold H. Davies		Osmer E. Smith	
County	P. E.	G. E.	P. E.	G. E.
Adams	1,218	7,321	1,218	6,525
Arapahoe	1,494	11,299	1,391	9,761
Clear Creek	246	1,164	248	1,134
Gilpin	67	407	78	362
Jefferson	3,203	13,532	3,502	12,663
	6,228	33,723	6,437	30,445

SECOND DISTRICT

	P. E.	G. E.
Black, William A.—R.....	23,788	80,746
Brewster, Guy K.—R.....	20,244	58,586
Cook, Joseph E.—R.....	25,137	89,660
Day, Edward C.—D.....	40,928	86,529
Frantz, Albert T.—D.....	40,266	68,283
Hickey, Frank E.—R.....	19,328	59,233
Knauss, Francis J.—R.....	25,752	77,018
Larwill, Langdon H.—R.....	15,016	
Lindsay, Henry Sherman—D.....	41,950	102,770
Miles, Floyd F.—D.....	40,612	73,565
Neff, Joseph D.—R.....	20,356	58,875
Sabin, James N.—R.....	18,513	
Shepherd, Ellett N.—D.....	40,560	76,168
Steele, Robert W.—D.....	41,742	101,264
Walsh, Joseph J.—D.....	42,134	93,984
Webster, Harold M.—R.....	24,185	66,397

SECOND DISTRICT TO FILL VACANCY

	G. E.	
	P. E.	G. E.
Doyle, William E.—D.....		80,801
Ruston, Paul A.—R.....		62,315

THIRD DISTRICT

	John L. East		William B. Nicolas	
County	P. E.	G. E.	P. E.	G. E.
Huerfano	1,412	3,473	383	1,882
Las Animas	3,631	8,275	895	2,519
	5,043	11,748	1,278	4,401

FOURTH DISTRICT

	John M. Meikle		G. Russell Miller	
County	P. E.	G. E.	P. E.	G. E.
Douglas	270	852	320	1,041
Elbert	265	1,079	403	1,257
El Paso	3,174	18,869	5,076	19,386
Kit Carson	215	1,485	790	1,930
Lincoln	453	1,384	567	1,441
Teller	678	1,014	151	713
	5,055	24,683	7,307	25,768

FIFTH DISTRICT

	William H. Luby	
County	P. E.	G. E.
Eagle	234	1,504
Lake	190	1,889
Summit	124	525
	548	3,918

SIXTH DISTRICT

	John H. Galbreath		James N. Noland	
County	P. E.	G. E.	P. E.	G. E.
Archuleta	90	614	118	445
Dolores	115	201	257	534
La Plata	864	1,782	769	3,506
Montezuma	484	847	671	2,346
San Juan	75	253	100	449
	1,628	3,697	1,915	7,279

SIXTH DISTRICT TO FILL VACANCY

	John H. Galbreath		James N. Noland	
County	P. E.	G. E.	P. E.	G. E.
Archuleta		21	111	23
Dolores		8	239	21
La Plata		110	712	671
Montezuma		42	614	128
San Juan		1	93	6
		182	1,769	849

SEVENTH DISTRICT

	Dan H. Hughes		Paul L. Littler	
County	P. E.	G. E.	P. E.	G. E.
Delta	761	3,623	986	3,438
Gunnison	356	1,500	200	1,201
Hinsdale	45	88	74	112
Mesa	1,974	9,142	1,626	8,820
Montrose	738	2,986	1,009	2,932
Ouray	78	582	75	556
San Miguel	233	703	111	504
	4,185	18,624	4,081	17,563

ABSTRACT OF VOTES CAST

EIGHTH DISTRICT

County	George H. Bradfield —R		Claude C. Coffin —R	
	P. E.	G. E.	P. E.	G. E.
Boulder	2,497	14,696	2,480	13,851
Jackson	148	538	142	437
Larimer	2,823	13,253	2,850	13,193
Weld	3,740	18,041	3,512	16,242
	9,208	46,528	8,984	43,723

NINTH DISTRICT

County	John R. Clark —R	
	P. E.	G. E.
Garfield	788	3,424
Pitkin	70	506
Rio Blanco	372	1,414
	1,230	5,344

TENTH DISTRICT

County	Harry Leddy —D		J. Arthur Phelps —R	
	P. E.	G. E.	P. E.	G. E.
Crowley	325	1,266	330	1,369
Otero	931	5,071	1,658	5,720
Pueblo	7,472	25,371	3,971	20,311
	8,728	31,708	5,959	27,400

ELEVENTH DISTRICT

County	Jos. D. Blunt —R	
	P. E.	G. E.
Chaffee	300	2,437
Custer	351	718
Fremont	1,765	6,226
Park	165	833
	2,581	10,264

TWELFTH DISTRICT

County	Joseph H. Thomas —R	
	P. E.	G. E.
Alamosa	393	3,055
Concejos	1,282	2,586
Costilla	271	1,318
Mineral	48	242
Rio Grande	435	2,876
Saguache	164	1,316
	2,593	11,393

THIRTEENTH DISTRICT

County	Raymond L. Sauter —R		George C. Twombly —R	
	P. E.	G. E.	P. E.	G. E.
Logan	1,142	5,351	952	4,469
Morgan	1,270	4,132	1,597	5,009
Phillips	393	1,515	348	1,322
Sedgwick	192	1,359	174	1,176
Washington	370	2,114	353	1,828
Yuma	478	2,762	447	2,669
	3,845	17,233	3,871	16,473

FOURTEENTH DISTRICT

County	Addison M. Gooding —D	
	P. E.	G. E.
Grand	132	1,164
Moffat	396	1,849
Routt	972	3,124
	1,500	6,137

FOURTEENTH DISTRICT TO FILL VACANCY

County	Addison M. Gooding —D	
	P. E.	G. E.
Grand	123	1,086
Moffat	356	1,736
Routt	836	2,884
	1,315	5,706

FIFTEENTH DISTRICT

County	Alfred A. Arraj —R		Averill C. Johnson —R		Alfred Todd —D	
	P. E.	G. E.	P. E.	G. E.	P. E.	G. E.
Baca	562	1,801			78	327
Bent	59	1,292			346	396
Cheyenne	169	718			324	155
Kiowa	78	703			75	100
Prowers	530	2,703			389	556
	1,398	7,217			1,212	1,534
						5,889

DISTRICT ATTORNEYS

FIRST DISTRICT

County	Clement R. Hackethal —D		Martin C. Molholm —R	
	P. E.	G. E.	P. E.	G. E.
Adams	1,103	6,074	1,286	4,129
Arapahoe	1,863	7,910	1,522	6,355
Clear Creek	272	1,029	280	614
Gilpin	200	360	72	222
Jefferson	2,191	9,368	3,885	9,304
	5,629	24,741	7,045	20,604

SECOND DISTRICT

County	Bert M. Keating —D		Richard H. Shaw —R	
	P. E.	G. E.	P. E.	G. E.
Denver	43,860	93,794	26,806	69,873

THIRD DISTRICT

County	O. F. Adams, Jr. —R		John N. Mabry —D	
	P. E.	G. E.	P. E.	G. E.
Huerfano	361	2,273	1,323	3,084
Las Animas	948	5,312	3,504	5,808
	1,309	7,585	4,827	8,892

FOURTH DISTRICT

County	John F. Bennett —D		Albert B. Logan —R	James F. Quine, Jr. —R	
	P. E.	G. E.	P. E.	P. E.	G. E.
Douglas	264	749	210	168	902
Elbert	272	825	190	258	1,034
El Paso	3,085	13,117	2,130	3,495	14,592
Kit Carson	210	1,185	442	433	1,699
Lincoln	448	1,188	357	282	1,140
Teller	646	767	75	102	638
	4,925	17,831	3,404	4,738	20,005

FIFTH DISTRICT

County	William J. Meehan —D	
	P. E.	G. E.
Eagle	400	1,566
Lake	851	2,039
Summit	169	526
	1,420	4,131

SIXTH DISTRICT

County	George R. Armstrong —R		Byron V. Bradford —R	George E. Dilts —D	
	P. E.	G. E.	P. E.	P. E.	G. E.
Archuleta	66	525	43	101	449
Dolores	95	323	68	217	429
La Plata	521	2,370	603	641	2,801
Montezuma	498	1,352	149	595	1,912
San Juan	34	363	46	80	333
	1,214	4,933	909	1,634	5,924

SIXTH DISTRICT TO FILL VACANCY

County	George R. Armstrong —R		George E. Dilts —D	
	P. E.	G. E.	P. E.	G. E.
Archuleta	603	85	11	
Dolores	399	190	28	
La Plata	2,784	571	268	
Montezuma	1,679	545	129	
San Juan	470	68	6	
	5,935	1,459	442	

SEVENTH DISTRICT

County	Harrison Loesch —R		*Jerome A. Paul —D		Amos L. Raso —R		Felix L. Sparks —D	
	P. E.	P. E.	P. E.	G. E.	P. E.	G. E.	P. E.	G. E.
Delta	531	787	588	2,268	3,882			
Gunnison	119	367	105	1,059	1,338			
Hinsdale	55	41	19	128	78			
Mesa	669	1,940	1,228	6,528	8,370			
Montrose	800	665	303	2,353	2,563			
Ouray	54	74	33	570	449			
San Miguel	59	206	72	475	568			
	2,287	4,080	2,348	13,381	17,248			

*Withdrew after Primary Election.

EIGHTH DISTRICT

County	George C. Pomainville —D		M. E. H. "Marc" Smith —R	
	P. E.	G. E.	P. E.	G. E.
Boulder	2,058	9,391	2,535	9,319
Jackson	109	251	152	331
Larimer	1,156	6,155	2,903	9,773
Weid	1,904	8,339	3,702	13,898
	5,227	24,136	9,292	33,321

NINTH DISTRICT

County	Robert Delaney —D		William A. Mason —R		Neil S. Mincer —R
	P. E.	G. E.	P. E.	G. E.	P. E.
Garfield	640	2,707	622	2,047	256
Pitkin	301	505	62	223	6
Rio Blanco	222	1,037	179	693	268
	1,163	4,249	863	2,963	530

TENTH DISTRICT

County	Sara Roe Bauer —D		Joseph R. Botleman —D		Vincent Cristiano —D	S. Philip Cabibi —R	Charles F. Keen —R	
	P. E.	G. E.	P. E.	G. E.	P. E.	P. E.	P. E.	G. E.
Crowley	89	242	1,006	43	61	273	885	
Otero	325	564	4,230	148	323	1,337	3,848	
Pueblo	1,813	3,857	22,598	2,736	1,569	2,695	12,012	
	2,227	4,663	27,834	2,927	1,953	4,305	16,745	

ELEVENTH DISTRICT

County	Emerson M. Eagleton —R		John Stump Witcher —D	
	P. E.	G. E.	P. E.	G. E.
Chaffee	256	1,614	524	1,861
Custer	344	485	154	443
Fremont	1,699	3,337	1,629	5,175
Park	173	570	155	587
	2,472	6,006	2,462	8,066

TWELFTH DISTRICT

County	John Ira Green —R		Leonard M. Haynie —D	
	P. E.	G. E.	P. E.	G. E.
Alamosa	411	2,550	902	1,857
Conejos	1,406	2,748	419	1,284
Costilla	272	1,265	488	1,263
Mineral	47	174	86	157
Rio Grande	435	2,293	313	1,585
Saguache	161	1,144	143	753
	2,732	10,174	2,351	6,899

THIRTEENTH DISTRICT

County	William B. Paynter —R	
	P. E.	G. E.
Logan	1,120	5,276
Morgan	1,602	5,117
Phillips	412	1,568
Sedgwick	202	1,396
Washington	402	2,263
Yuma	516	3,116
	4,254	18,736

COUNTY OFFICERS

COUNTY	COUNTY SEAT	COUNTY CLERK	COUNTY TREASURER	ASSESSOR	SHERIFF	COUNTY JUDGE	CLERK COUNTY C
1 Adams	Brighton	Clyde L. Miller—R.	Ben H. Tyler—D.	L. D. Burnside—D.	Homer W. Mayberry—R.	R. Boyd Garrison—R.	Mrs. Bernice Ward—R.
2 Alamosa	Alamosa	C. Elmer Storms—D.	Mrs. Elizabeth P. Joyce—D.	Mrs. Irene Shakespeare—D.	Jimmie L. Cockrum—D.	Gilbert H. Sheesley—R.	Edith Hansen
3 Arapahoe	Littleton	Earl K. Downing—R.	Charles B. Sinclair—R.	Ira Van Dreal—R.	Charles L. Foster—R.	Henry Bruce Teller—D.	J. T. Robertson—D.
4 Archuleta	Pagosa Springs	Philip R. Johnson—D.	Earl L. Lattin—R.	Earl Lattin—D.	Norman Ottoway—D.	J. T. Martinez—R.	J. T. Martinez—R.
5 Baca	Springfield	Mrs. Margaret L. Reschke—R.	Mrs. Hannah Baker—D.	Hiram T. Burton—D.	Joe Dennett—R.	W. R. Randall—D.	Willard J. Allen
6 Bent	Las Animas	Mrs. Myrtle V. Johnson—D.	Floyd C. Smith—R.	R. C. Banta—D.	L. E. Brookshire—D.	Willard J. Allen—D.	Willard J. Allen
7 Boulder	Boulder	Jack Londen—R.	Lynn R. McIntosh—R.	Aylwin A. Smith—R.	Arthur T. Everson—R.	William E. Buck—R.	R. G. Sutherland
8 Chaffee	Salida	Jos. T. McDonough—D.	Chas. C. White—D.	Laurence E. England—D.	Emmet L. Shewalter—D.	Harry L. McGinnis—D.	Arthur E. Smith
9 Cheyenne	Cheyenne Wells	Mrs. Ava L. Crosby—R.	Mrs. Marie A. McMillen—R.	Stanley J. Robinson—D.	E. H. Beyer—R.	R. A. Martinson—R.	R. A. Martinson
10 Clear Creek	Georgetown	Kenneth E. Moscript—R.	J. Ben Foley—D.	Edmund Rowse—R.	James E. Sacra—R.	William E. Walthers—R.	William E. Walthers
11 Conejos	Conejos	Reginaldo Garcia, Jr.—R.	Antonio Lucero—D.	Leandro R. Jaramillo—R.	Gilbert De Herrera—R.	J. Fidel Chavez—D.	Kathleen Haynie—D.
12 Costilla	San Luis	Abel I. Vigil, Jr.—R.	Joe M. Espinoza—D.	Ernest A. Vigil—D.	Mike Rampa—D.	A. Prax Ortega—D.	-----
13 Crowley	Ordway	C. C. Biddison—R.	Lucas E. Davis—R.	Harry Morgan—R.	J. J. O'Connell—D.	E. M. Stroud—D.	Mrs. Anne M. Bauman
14 Custer	Westcliffe	Mrs. Stella Byrne—D.	Olen A. Kennon—R.	Floyd A. Thompson—R.	Fred Squire—R.	August N. Menzel—R.	August N. Menzel—R.
15 Delta	Delta	O. A. Ehrsgott—R.	Clement A. Bowle—R.	J. B. Drake—D.	Leonard L. Wilcox—R.	Vance O. Kilmer—R.	Mrs. Lucile S. Ford
16 Denver	Denver	Miss Mae Hynes	Roy W. Cass	Roy W. Cass	Harold A. McArthur	Charles E. Kettering—D.	John L. Griffith—D.
17 Dolores	Dove Creek	Mrs. Irma D. Morris—D.	Mrs. Lauphine Elliott—D.	Floyd I. Davis—R.	Frank L. McKibben—D.	George E. Hicks—D.	Mrs. Lauphine Elliott
18 Douglas	Castle Rock	Charles A. Prescott—D.	William J. Buckner—R.	Ross W. Johnston—R.	John L. Hammond—R.	Walter E. Jesiop—D.	Walter E. Jesiop—D.
19 Eagle	Eagle	Thomas F. McBrean—R.	Forrest W. Cave—D.	Timothy J. Sullivan, Jr.—R.	W. M. Wilson—R.	Mrs. Mabel A. Ethel—D.	Mrs. Mabel A. Ethel
20 Elbert	Kiowa	Mrs. Delpha S. Moreland—D.	C. W. Elsner—R.	Orley Crouch—R.	G. R. Brown—R.	W. V. Kennett—D.	W. V. Kennett—D.
21 El Paso	Colorado Springs	Charles Ozias—D.	W. J. Graham—R.	A. W. Sparkman—R.	Norman E. Short—D.	Irvin E. Jones—D.	Harry A. Thompson
22 Fremont	Canon City	Miss Mary J. McDonough—D.	W. J. O. Burris—R.	J. W. Haymaker—R.	Gilbert E. Ackelbein—D.	C. A. Fredrickson—R.	Miss Florence Gerlach
23 Garfield	Glenwood Springs	Charles S. Keegan—D.	G. B. Helm—R.	Richard Wilson—R.	Edward Taylor—R.	Mrs. Marie Holloway—R.	-----
24 Gilpin	Central City	Miss Marie Garwood—D.	Hugh L. Lawry—R.	Victor J. Tavanatti—R.	Kenneth McKenzie—D.	William S. Barrick—D.	-----
25 Grand	Hot Sulphur Springs	R. O. Throckmorton—R.	Carl F. Fischer—R.	Frank Stafford—D.	Chester McQuary—R.	Wilburn W. Shiflet—R.	Miss Mary Luchetta
26 Gunnison	Gunnison	Mrs. Ethel A. Sisson—R.	M. J. Hogan—D.	Karl Zugelder—D.	Herb G. Lashbrook—R.	C. C. McWilliams—D.	E. W. Soderholm—R.
27 Hinsdale	Lake City	Mrs. Mabel B. Rawson—R.	Mrs. Pearl McCloughan—R.	Mrs. Annie M. Doran—R.	Marvin J. Rexroad—R.	E. W. Soderholm—R.	Mrs. Pauline Sanchez
28 Huerfano	Walsenburg	Damaso Vigil, Jr.—D.	Miss Emma Bellotti—D.	Charles Duran—R.	Claud Swift—D.	Joseph A. Barron—D.	J. A. McNamara—D.
29 Jackson	Walden	Mrs. Lillian F. Mitchell—D.	Miss Florence A. Wilkins—D.	Harold E. Hampton—D.	Norman C. Woodruff—R.	J. A. McNamara—D.	J. A. McNamara—D.
30 Jefferson	Golden	Robert W. Newton—R.	Walter Brown—D.	Kenneth Fenwick—D.	Carl E. Enlow—R.	C. D. Stoner—R.	G. B. Hawley—R.
31 Kiowa	Eads	Art Bradbury—R.	Donald Durrett—R.	Edwin Immer—R.	Eugene C. Kelley—R.	George B. Black—R.	George B. Black
32 Kit Carson	Burlington	Miss Mary E. Evans—R.	Sam E. Travis—R.	Parke H. Guthrie—R.	O. C. Dunlap—R.	E. M. Short—R.	E. M. Short—R.
33 Lake	Leadville	John Gregory—D.	Emmett Irwin—D.	John J. Bohan—D.	Clarence McMurrugh—D.	Walter A. Johnson—D.	Minnette Walsh—D.
34 La Plata	Durango	Mrs. Edith C. Kiel—R.	Thomas Mason—R.	John R. Brennan—R.	Chester J. Petty—R.	W. Bruce Jacobson—R.	Miss Bonnie Schipper
35 Larimer	Fort Collins	C. Marion Bradford—R.	C. S. Ickes—R.	W. Ed. Wright—R.	Ray M. Barger—R.	Harry H. Hartman—R.	N. G. Cushing
36 Las Animas	Trinidad	Ed Bustamante—D.	James Ingles—D.	Isaac Sandoval—D.	Felix Garcia—D.	William T. Eckhart, D.	Nick Bisulco—D.
37 Lincoln	Hugo	L. R. Howe—R.	Wm. M. Jones—D.	E. J. Kidder—R.	Merlin H. Koerner—R.	T. G. Watson—D.	Miss Mary Lou Musgr
38 Logan	Sterling	Carroll G. Bryan—R.	W. F. Alexander—D.	J. H. Berkstresser—R.	E. M. Brown—R.	Joseph A. Davis—R.	Mrs. Marguerite Dersl
39 Mesa	Grand Junction	Miss Annie M. Dunston—D.	Burrell C. Reynolds—D.	H. V. Zimmerman—R.	E. E. Redmon—D.	Adair J. Hotchkiss—D.	Miss Gladys Moss—D.
40 Mineral	Creede	Mrs. Jane A. Oates—R.	Wm. T. Jackson—R.	John G. Dabney—D.	Harry L. Larson—D.	Loyd J. Wanzler—R.	-----
41 Moffat	Craig	H. H. Mobley—D.	Russell H. Coles—R.	W. O. Miner—D.	George Krieger—R.	N. Frank Nelson—R.	Mrs. Anna Patten—D.
42 Montezuma	Cortez	John Leavitt—D.	Mrs. Lois Story Miller—D.	Charles R. Bowers—R.	Frank Weaver—R.	James F. Miller—D.	Mrs. Loretta Sanders
43 Montrose	Montrose	Ira C. Foster—R.	Mrs. Ruth E. Gaines—R.	James L. Hamilton—R.	Arthur Sutton—R.	John C. Bass—R.	Mrs. Mary Terriere
44 Morgan	Fort Morgan	Loyal C. Baker—R.	Edw. H. Madison—R.	Lewis E. Wilson—R.	Sam Pedersen—D.	A. W. Dulweber—D.	Rachael Bridges—R.
45 Otero	La Junta	Edward S. Whitcomb—R.	Edward T. Oberling—R.	Emmett B. Clark—R.	George Freidenberger—R.	William L. Gobin—R.	E. D. Jelsma—D.
46 Ouray	Ouray	Mrs. Eva K. Moule—R.	Thomas H. Cline—R.	Patricio Stealey—D.	Harry R. Scott—R.	E. D. Jelsma—D.	E. D. Jelsma—D.
47 Park	Fairplay	Mrs. Cherie Burgess—R.	Glen L. Swanson—R.	Walter R. Merritt—R.	S. H. Law—R.	Clarence S. Bullock—R.	Mrs. Violet W. Bullo
48 Phillips	Holyoke	Mrs. Cora E. Smith—R.	Miss Martha Hansen—R.	B. A. Stephenson—R.	Harry M. Clements—R.	Leon Kepler—R.	Leon Kepler—R.
49 Pitkin	Aspen	M. M. Neihardt—R.	Kenneth S. Watt—R.	Warren J. Conner—R.	Otto Johnson—D.	Wm. R. Shaw—R.	-----
50 Prowers	Lamar	Max V. Speckmann—R.	I. S. Heath—R.	N. G. Jones—R.	John Hodson—R.	E. R. Jones—R.	Mrs. Huldah Hurley
51 Pueblo	Pueblo	A. G. Kochenberger—D.	J. E. Creel—D.	Marvin L. Starkweather—D.	Joe E. Tucker—D.	Hubert Glover—D.	Charles Ruth Park—D.
52 Rio Blanco	Meeker	Herbert H. Morlan—R.	C. L. Tagert—D.	H. E. Sexson—D.	Robert T. Fuiton—R.	C. C. Aldrich—R.	C. C. Aldrich—R.
53 Rio Grande	Del Norte	Ralph W. Roberts—R.	W. R. Laase—R.	F. E. Gibbs—D.	Allan Fennell—R.	Manlius T. Hancock—D.	L. A. Ruark
54 Routt	Steamboat Springs	Cecil Rorex—D.	T. W. Poulson—D.	John Petranovich—D.	William Macfarlane—R.	Eugene Steele—D.	-----
55 Saguache	Saguache	Miss Edith L. Jones—R.	Sidney B. Hall—D.	Clifford Burnham—R.	Chas. McCormick—R.	W. J. Werner—R.	W. J. Werner
56 San Juan	Silverton	Mrs. Sylvia L. Nelson—R.	Mrs. Ida L. Grimes—R.	Arthur R. Walker—R.	Herman Zueck—D.	Charles Pearson—R.	Charles Pearson—R.
57 San Miguel	Telluride	Miss Sally A. Clark—D.	Donald A. O'Rourke—D.	Harold C. Ballard—D.	T. H. Mahoney—D.	Everett Vernon—D.	-----
58 Sedgwick	Julesburg	Mrs. Florence Arndt—D.	W. R. Bennisson—R.	Glen B. McKinstry—R.	Glenn Goodard—R.	Denmer A. Wells—R.	Harriett Monson—R.
59 Summit	Breckenridge	Herman Dereum—R.	Frank F. Brown—R.	Ed. T. Stuard—D.	M. R. Loomis—D.	J. M. Armstrong—D.	J. M. Armstrong—D.
60 Teller	Cripple Creek	Mrs. Mamie Wells—D.	John W. Reifenrath—D.	Ed. T. Stuard—D.	Cecil A. Markley—D.	Vincent H. Ryan—D.	-----
61 Washington	Akron	Mrs. Harold G. Simpson—R.	Harold L. Sisson—R.	Tom W. Rolofson—D.	Wesley McDonald—R.	James E. Kelly—D.	Mrs. Lucille Woodard
62 Weld	Greeley	Mrs. Ann Spomer—R.	Harold H. Seaman—R.	William J. Barry—R.	George A. Hill—R.	Donald A. Carpenter—R.	Ross I. Shaklee—D.
63 Yuma	Wray	John Adcock—R.	Wm. T. Rosenkrans—R.	Homer M. Bruce—R.	George O. Wilson—R.	Buffer Roberts—R.	Buffer Roberts—R.

OFFICERS OF COLORADO—1949-1950

COUNTY COURT	CLERK DISTRICT COURT	SURVEYOR	SUPT. OF SCHOOLS	CORONER	COUNTY COMMISSIONERS			
Adams Ward—R.	Carl Jacobson—R.	James C. Counter—D.	Bertha E. Heid—D.	Lyle G. Rice—R.	Wm. Eppinger—D.	E. G. Waymire—D.	Del J. Cimiyott—D.	1
Anderson—R.	Edith Hansen, R.	Norman White—D.	Mrs. Mabel O'Laughlin—D.	James R. Hurley—R.	Ray Wells—R.	Owen Baldwin—D.	Ellis B. Nash—D.	2
Bartlett—D.	O. C. Hoffman—R.	David L. Nicholl—R.	Mrs. Thelma S. Hastings—R.	Ivan J. Joss—R.	W. C. Giggall—R.	Leonard J. Grant—D.	Royce P. Robins—D.	3
Bartlett—D.	Philip R. Johnson—D.		Mrs. Rachel Tishner—R.		Dailey Hott—D.	J. T. Chambers—R.	Harmon T. Clark—D.	4
Bartlett—D.	Elmer E. Terry—R.		Lillian Collings—D.	Dr. G. A. Duffy—R.	Jess L. Suhler—R.	Ewell S. Benson—D.	Loyd Freeman—D.	5
Bartlett—D.	Wm. A. Bush—R.		Mrs. Hazel L. Martin—R.	Lester B. Powell—R.	S. A. Pryor—D.	Harry E. Blackburn—D.	Everett J. Roesch—R.	6
Bartlett—D.	C. W. Atkinson—R.	J. E. Byron—R.	O. L. Dever—R.	Geo. W. Howe—R.	A. W. Thurston—R.	Elmer Autrey—R.	W. D. McCaslin—D.	7
Bartlett—D.	Arthur E. Smith—R.	Joe M. Cuenin—R.	Mrs. Bessie M. Shewalter—D.	Joe E. Stewart—D.	Robert T. O'Haver—R.	Irl Taliaferro—D.	Ben Behrman—D.	8
Bartlett—D.	Miss Mattie Trimble—R.	D. H. Zuck—R.	Mrs. Cecile G. McClaskey—R.	A. H. Brentlinger—R.	Joseph R. Carrigan—R.	F. H. Hadley—R.	L. D. Ferguson—R.	9
Bartlett—D.	John W. Old—D.	Chas. L. Harrington—D.	Miss Dorothy Carlson—R.	Freeman D. Fowler—R.	Bert B. Wright—R.	Henry C. Nelson—R.	Roy McRee—D.	10
Bartlett—D.	Robert Valdez—R.	Jennings Thomas—R.	Robert Montano—D.	Arthur Gjellum—D.	Delfino E. Garcia—R.	W. Fred Haynie—D.	Juan I. Medina—R.	11
Bartlett—D.	Joseph F. Romero—R.	A. M. Weaver—R.	Mrs. Belinda S. Carpenter—R.	Dr. William C. Shontz—R.	Epifanio Gold—D.	Fred Espinoza—R.	Epifanio Lopez—D.	12
Bartlett—D.	Mrs. Letha P. Leach—R.	Carl Klein—R.	Mrs. Rubylee Guilliams—D.	Emil J. Jonach—R.	E. G. Clatworthy—R.	B. H. Sweckard—R.	Glen W. Smith—R.	13
Bartlett—D.	August N. Menzel—R.	Richard C. Colgate—R.	Mrs. Frances E. Kettle—R.	Chas. A. Menzel—R.	Dewey Austin—D.	Dwight E. Tibbetts—D.	D. C. MacKenzie—D.	14
Bartlett—D.	Mrs. Pearl H. Stewart—R.	Abner S. McKee—R.	Miss Martha Savage—D.	Quincy Lamar—D.	W. F. Blaine—R.	Charles Kiser—D.	Joe Barnie—D.	15
Bartlett—D.	J. E. Goodman—R.	Edward A. Smith—R.		Dr. Angelo Lapi—R.	Roy W. Cass—R.	Thomas Campbell—R.	A. A. Blakley—D.	16
Bartlett—D.	Dan B. Hunter—D.	Henry Curtis—R.	Miss M. Anna Engel—R.	C. M. Engel—R.	Louis M. Jones—R.	E. E. Ballenger—D.	Wade Redford—D.	17
Bartlett—D.	O. P. Weston—D.	William H. Lea—D.	Elizabeth E. Bean—R.	Douglas Andrews—D.	Roy Woodworth—R.	Frank Dalkan—R.	Donald D. Williams—D.	18
Bartlett—D.	Leo Fessenden—R.	Forrest L. Head—R.	Mrs. Mary C. Grant—R.	Paul Andre—R.	H. A. Nottingham—D.	Carl Forster—D.	LeRoy Borah—R.	19
Bartlett—D.	Harry F. Anderson—R.	Thomas J. Russell—R.	Mrs. Esther Carson—R.	Ralph B. Maul—R.	R. W. Lambert—R.	Charles L. Kimzey—D.	E. F. Ager—R.	20
Bartlett—D.	Mrs. Ruth M. Burns—R.	Otis W. Witcher—D.	Mrs. Lucy S. Perry—R.	Dr. Henry W. Maly—R.	Keith D. McBurney—R.	Fred H. Monk—R.	John M. Torrence—R.	21
Bartlett—D.	Jonathan Seaman—R.	Tom Walker—R.	Mrs. Adella M. Archer—D.	Chet Cook—R.	Norman J. Boyd—D.	J. Walter Martin—R.	Finis Parks—R.	22
Bartlett—D.	J. S. Woody—R.		Alma M. Harris—D.	J. I. Burdge—R.	Dewey Williams—R.	Wm. Dodds Scott—R.	K. A. Baillie—R.	23
Bartlett—D.	Frank A. Potter—R.		Mrs. Nora S. Scott—D.	Frank Daugherty—R.	Otto M. Blake—R.	Martin N. Nelson—R.	Arthur Crow—R.	24
Bartlett—D.	Charles W. Bloom—D.	E. D. Bloye—R.	Harriet C. Dolloff—R.	D. I. Cox—R.	James E. Quinn—D.	George E. Field—R.	Fay F. DeBerard—R.	25
Bartlett—D.	Mrs. Alma Miller—R.	L. G. Dale—R.	Mrs. Emma L. Hards—R.	Alex Campbell—D.	Anton Danni—D.	C. Muri Ellebrecht—D.	Ed Leonard—R.	26
Bartlett—D.	H. G. Heath—D.		Mrs. Carolyn Wright—R.	Arthur P. Griffiths—R.	H. L. Townsend—D.	Henry T. Hoffman—R.	Orville Dowzer—R.	27
Bartlett—D.	Charles Haines—R.	A. S. Willburn—D.	Miss Frances Nelson—D.	Gus Crump—D.	Sabino Archuleta—D.	Fred Scholes—D.	Clyde M. Johnson—D.	28
Bartlett—D.	Archie G. Maine—R.	Frank DeLynden—D.	Walter E. Brunner—R.	Dr. C. M. Morgan—R.	M. P. Cloonan—R.	L. B. Wamsley—D.	Ray C. Fox—D.	29
Bartlett—D.	Ben Burgess—R.	E. E. Duckworth—D.	Mrs. Mariam Martensen—R.	Arden Albers—D.	Emil Schneider—D.	Walter True—D.	George Green—R.	30
Bartlett—D.	C. E. Hamilton—R.	Roland Eder—D.	Miss Florence Morris—R.	Dr. R. G. Ward—R.	Wm. E. Rose—R.	P. L. Reed—R.	Raymond Tinsley—R.	31
Bartlett—D.	Mrs. Mabel Boger—R.		Mrs. Willa Zick—R.	W. R. Hendricks—R.	Reuben C. Anderson—R.	Earl Boren—D.	Ernest L. McArthur—R.	32
Bartlett—D.	Ross Pearson—R.		Miss Lucy E. Cramer—R.	Andrew Cassidy—D.	Francis D. Slavin—D.	Albert Zack—R.	Adolph Kuss, Sr.—D.	33
Bartlett—D.	Walter C. Allan—R.	A. L. Kroeger—R.	Violet Tipotsch—D.	R. L. Downing—R.	D. W. Sexton—R.	Emmet Hott—D.	Lloyd F. Benton—R.	34
Bartlett—D.	Kenneth A. Johnson—R.	James H. Andrews—R.	Frank L. Irwin—R.	Harold A. Warren—D.	Ernest Fischer—R.	Robert H. Watts—R.	A. Walter Lawson—R.	35
Bartlett—D.	Maupin Woodson—D.	Harry Hendrickson—D.	Harry Raye—D.	Ed Toupal—D.	John Kancilia, Jr.—D.	Claude Foster—R.	Joe La Crue—D.	36
Bartlett—D.	R. J. Barngrover—R.	Harold Lee—R.	Mrs. Irene Hamling—D.	James W. Buchanan—R.	C. L. Evans—R.	A. S. Covington, Sr.—D.	Joe Pelster—D.	37
Bartlett—D.	Mrs. Cordelia K. Davis—R.	J. E. Youngquist—R.	Mrs. Doris R. Plummer—D.	Robert M. Jackson—R.	Earl R. Bonham—R.	Oscar M. Marks—R.	Hugh E. Williams—R.	38
Bartlett—D.	Mrs. Lucy E. Hogan—D.	Roy L. George—D.	Mrs. Lucile H. Mahannah—D.	W. H. Snyder—D.	H. Grady Puett—D.	Oscar C. Mayne—D.	Walter A. Stout, Jr.—R.	39
Bartlett—D.	Wm. T. Jackson—R.	Paul B. Davis—R.	Mrs. Maude C. Lamb—R.	Fred Ryden—D.	Wm. H. Swinehart—R.	Erick W. Nelson—R.	Everett E. Corwin—R.	40
Bartlett—D.	Ralph L. White—D.	Fred D. Legler—D.	Henry E. Steele—D.	I. J. Robacker—D.	Claude J. Myers—R.	Cy Hansen—R.	Earl Wilson—D.	41
Bartlett—D.	Mrs. Anna Patten—D.	Dave C. Hickman—D.	Mrs. Lotta Manauagh—R.	J. W. Ertel—R.	Chas. T. Porter—I.	J. C. Rumburg—R.	Claude Everett—D.	42
Bartlett—D.	Clide N. McClean—R.	W. E. Hance—R.	Rosella Wallis—R.	Merrill Ormsbee—D.	Fred Sullivan—R.	Harland K. Duncan—R.	Clyde Porter—D.	43
Bartlett—D.	Hugh R. Smith—R.	N. M. MacNeill—D.	Miss Marian Lockwood—D.	Francis S. Jolliffe—R.	R. J. Lamborn—R.	J. R. Christensen—D.	Steve Christensen—R.	44
Bartlett—D.	Miss Leah M. Ryder—R.	Franklin Shafer—D.	Miss Ruth R. Lytle—R.	Ralph E. Peacock—R.	G. D. Steward—R.	R. P. Lewis—R.	W. A. Bauserman, Jr.—D.	45
Bartlett—D.	Mrs. Marg. L. MacLennan—R.	Gerald F. Galloway—R.	Ruth Massard—R.	Leo Flor—D.	Buel H. Adams—R.	Harry McClure—R.	Wm. McCullough—D.	46
Bartlett—D.	Clarence S. Bullock—R.	Walter O. Lutze—R.	Elizabeth Smith—R.	Dr. R. B. Patterson—R.	Louis Almgren—D.	E. B. Bell—D.	W. C. Lewis—R.	47
Bartlett—D.	George A. Barker—R.	Tom Walker—R.	Mrs. Earlean F. Jung—R.	Dr. J. Ralston—R.	Arthur Falk—R.	S. J. Meakins—D.	D. F. Sagehorn—R.	48
Bartlett—D.	Miss Louise M. Berg—R.	George H. Russell—R.	Mrs. Lettie Lee Brand—D.	Bernard P. Popish—D.	T. J. Sardy—D.	Clarence O. Quam—D.	Orest A. Gerbaz—D.	49
Bartlett—D.	Mrs. Marie Uhl—R.	Simon F. Elliot—D.	Mrs. Nan S. Creeghe—R.	Dr. C. T. Knukey—R.	Wm. N. Wilson—R.	W. H. Straney—R.	W. M. Turpin—R.	50
Bartlett—D.	Robert D. White—R.	John W. Wharton—R.	Stanley A. Leftwich—D.	Dr. C. N. Caldwell—D.	Pete Hughes—D.	John E. Hill—D.	John H. Reece—R.	51
Bartlett—D.	Antonio J. N. Valdez—R.	Ward Mathias—R.	Mrs. Josephine Holland—D.	Clyde B. Stephenson—R.	Hugh L. Caldwell—R.	William Murray—D.	K. W. Phillippi—D.	52
Bartlett—D.	M. M. Burch—R.	Stanley Dismuke—D.	John W. Wharton—R.	W. Edward Sharp—D.	R. S. Loser—D.	Geo. F. Millikin—D.	Vernon C. McCallister—R.	53
Bartlett—D.	Mrs. Fay Fennell—R.	W. L. Hammond—D.	Stanley Dismuke—D.	Howard R. Root—R.	J. Frank Stetson—D.	William S. Green—D.	Claude A. Luekens—D.	54
Bartlett—D.	Joseph E. Dresback—D.	J. M. Cook—D.	Mrs. Lulu K. Bell—R.	Dr. John M. Coleman—R.	Geo. F. McClure—D.	H. K. Lockett—D.	Geo. H. Curtis—R.	55
Bartlett—D.	Mrs. Alice L. Erickson—D.		Mrs. Anna C. Bell—D.	Wm. E. Maguire—D.	John McClure—R.	C. W. Fleeming—R.	Louis Dalla—R.	56
Bartlett—D.	Mrs. Harriett Monson—R.		Miss Irene M. P. Wichmann—D.	Dr. G. G. Balderston—R.	John Ferguson, Jr.—D.	Wm. Finnegan—D.	George Mike Young—R.	57
Bartlett—D.	C. W. Burnheimer—R.	L. A. Chase—D.	Miss Veta Stalcup—R.	Dr. John C. Lundgren—R.	Emray A. Price—R.	Clarence L. Eversman—R.	W. J. Jenkins—D.	58
Bartlett—D.	Mrs. Martha Shafer—R.	A. B. Crosley—R.	Mrs. Lilia P. Stafford—R.	Lester C. Owens—R.	Lawrence W. Garvie—D.	Earl W. Rice—D.	Daniel Moguee—R.	59
Bartlett—D.	Mrs. Minnie Blauser—R.	E. E. Hickman—R.	Mrs. Loretta Surber Davis—D.	Dr. A. C. Denman—D.	W. B. Moore—D.	Lee Wild—D.	Harold Ellis—D.	60
Bartlett—D.	A. J. Luther—R.	T. B. Moody—R.	Delman Yackie—R.	Y. E. Wohlauer—R.	Oscar E. Higgason—R.	James E. Lee—D.	Tom Combs—D.	61
Bartlett—D.	Mrs. Esther Cassin Serafini—R.	Wm. B. Coston—D.	Paul N. Lodwick—R.	John W. Allnut—R.	Carl J. Magnuson—R.	A. Wm. Hanson—R.	Geo. L. Andersen—R.	62
Bartlett—D.			Mrs. May Glaser—R.	Paul Morris—R.	Geo. E. Huey—D.	Arthur Quiggle—D.	Geo. W. Wingfield—D.	63

