

STATE OF COLORADO

# Abstract of Votes Cast

AT THE

**PRIMARY ELECTION**

Held on the Fourteenth Day of September, A. D. 1948

AND AT THE

**GENERAL ELECTION**

Held on the Second Day of November, A. D. 1948

FOR

Presidential Electors, United States Senators, Congressmen,  
State, Legislative and District Officers

AND

Proposed Constitutional Amendments, Initiated  
and Referred Bills

ALSO

Directory of the United States, State, Legislative,  
District and County Officers



COMPILED FROM OFFICIAL RETURNS

BY

GEORGE J. BAKER  
Secretary of State

1948

PRICE, 50 CENTS

ABSTRACT OF VOTES CAST AT A GENERAL ELECTION HELD ON TUESDAY, NOVEMBER 2, A. D. 1948, FOR PRESIDENTIAL ELECTORS, UN

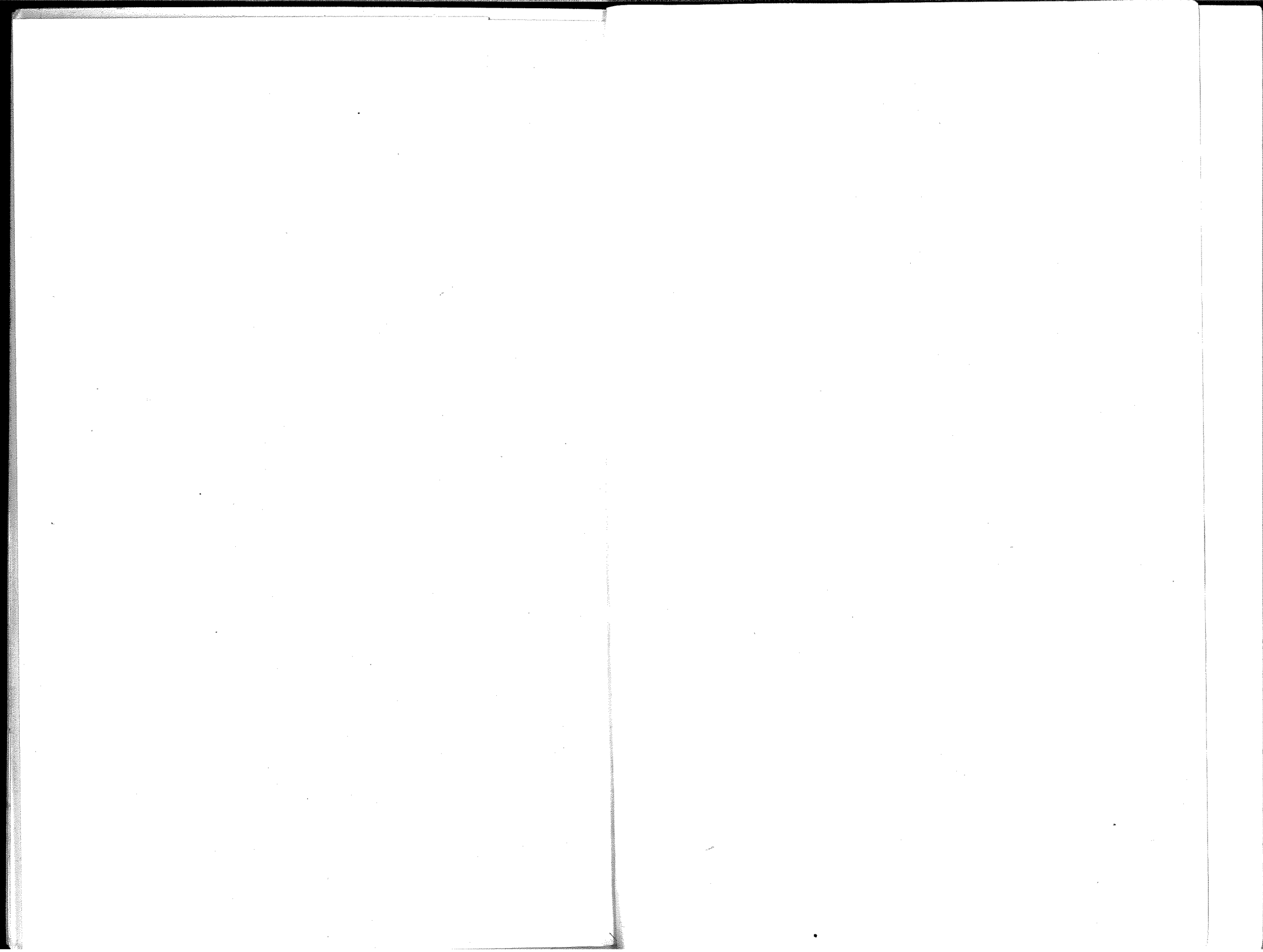
	PRESIDENT OF U. S.				U. S. SENATOR				JUSTICES OF THE SUPREME COURT				GOVERNOR			
	Thomas E. Dewey—R.	Harry S. Truman—D.	Farrell Dobbs—Soc. Workers	Edward A. Teicher—Soc.-Labor	Norman Thomas—Soc.	Henry A. Wallace—Prog.	Edwin C. Johnson—D.	Will F. Nicholson—R.	Joe Gurule—Prog.	Carle Whitehead—Soc.	H. Lawrence Hinkley—R.	E. V. Holland—D.	George A. Luxford—R.	O. Otto Moore—D.	David A. Hamill—R.	Lee Knous—D.
Adams	4,419	6,240	9	4	20	99	7,864	2,862	41	21	4,269	5,550	4,235	5,224	3,247	7,423
Alamosa	1,950	2,395	4	1	4	24	3,087	1,270	48	2	1,900	2,287	1,637	2,071	2,071	2,869
Arapahoe	6,962	7,943	44	122	44	122	10,511	4,495	41	46	6,446	7,395	6,513	7,069	4,699	10,298
Archuleta	479	597	1	1	1	4	679	332	6	3	419	502	381	373	378	632
Baca	1,260	1,368	0	0	0	21	1,678	947	5	4	1,177	1,092	953	956	1,150	1,494
Bent	1,296	1,658	10	1	1	18	1,959	974	5	5	1,244	1,528	1,036	1,469	1,007	1,968
Boulder	10,335	8,792	212	488	212	488	12,265	7,178	286	95	9,725	8,772	8,892	8,484	6,693	12,975
Chaffee	1,476	2,065	7	7	7	31	2,621	980	4	3	1,350	2,024	1,278	1,847	1,093	2,473
Cheyenne	713	657	1	0	1	13	859	503	1	1	702	537	621	583	596	781
Clear Creek	836	810	0	1	1	12	1,064	592	3	10	788	736	808	696	569	1,093
Conejos	1,532	2,236	12	14	8	25	2,479	1,070	120	12	1,743	1,526	1,498	1,331	1,514	2,164
Costilla	921	1,563	8	13	8	19	1,659	816	18	5	941	1,299	811	1,236	931	1,533
Crowley	1,027	1,004	1	1	3	4	1,384	656	1	4	961	934	863	903	771	1,254
Custer	547	384	0	0	2	10	543	388	2	1	525	349	427	315	452	485
Delta	3,158	3,171	3	0	20	117	4,251	2,176	46	5	2,910	2,932	2,599	2,549	2,318	4,124
Denver	76,364	89,489	62	89	643	2,420	114,462	52,455	944	670	69,816	85,225	76,118	84,181	46,128	117,265
Dolores	352	435	0	0	0	14	563	201	3	3	284	362	241	280	244	540
Douglas	979	767	0	0	3	5	1,111	650	3	3	951	678	908	593	809	953
Eagle	738	1,008	2	1	2	80	1,322	456	57	3	729	961	659	835	533	1,287
Elbert	1,155	873	1	0	1	19	1,288	750	1	3	1,091	754	965	666	958	1,062
El Paso	15,705	12,291	9	8	148	258	17,213	11,076	98	77	15,154	11,870	13,029	11,747	12,134	16,126
Fremont	4,421	4,077	7	1	26	95	5,528	3,095	26	13	4,050	3,919	3,407	3,839	3,303	5,297
Garfield	2,416	2,364	0	1	4	37	3,183	1,632	16	3	2,179	2,185	2,040	2,008	1,827	2,959
Gilpin	302	296	0	0	3	10	420	192	1	3	255	285	264	278	224	428
Grand	777	763	0	2	8	12	1,068	517	5	5	759	695	740	565	531	1,035
Gunnison	1,103	1,326	2	2	5	56	1,782	699	16	3	1,012	1,240	953	1,142	751	1,796
Hinsdale	133	75	0	0	0	C	131	75	0	0	125	68	115	60	80	127
Huerfano	1,841	3,448	4	1	1	115	3,918	1,464	54	2	1,727	3,299	1,489	3,167	1,569	3,773
Jackson	327	291	0	0	0	C	428	193	1	0	309	256	297	223	242	371
Jefferson	9,903	9,145	2	1	78	179	12,681	6,567	71	55	9,101	8,692	9,058	8,501	6,528	12,728
Kiowa	758	659	1	0	2	11	837	569	5	1	702	559	559	553	618	797
Kit Carson	1,873	1,281	1	0	9	17	1,789	1,377	1	9	1,747	1,036	1,517	988	1,447	1,744
Lake	838	1,581	2	2	4	75	1,907	567	30	5	763	1,565	748	1,389	606	1,888
La Plata	2,735	2,536	3	4	4	78	3,366	1,900	33	3	2,473	3,297	2,230	1,955	2,231	3,051
Larimer	9,813	7,062	5	3	63	83	10,336	6,675	35	27	9,282	6,655	8,382	6,180	7,032	9,910
Las Animas	3,452	7,586	13	8	18	133	8,132	2,633	271	20	3,452	6,968	2,852	6,707	2,940	8,053
Lincoln	1,271	1,231	1	0	3	10	1,623	893	3	3	1,226	1,086	1,076	947	1,013	1,474
Logan	3,223	3,179	4	0	9	33	4,201	2,357	8	3	1,406	1,880	1,768	2,292	3,164	3,264
Mesa	6,586	8,401	7	5	49	137	10,806	4,374	27	29	6,120	7,964	5,470	7,165	4,823	10,222
Mineral	144	190	0	0	0	1	255	78	0	0	129	179	127	157	107	227
Moffat	1,261	1,101	1	5	23	21	1,727	661	3	4	1,197	997	1,120	853	940	1,411
Montezuma	1,630	1,653	1	2	6	21	1,727	661	19	8	1,385	1,478	1,181	1,252	994	2,241
Montrose	2,473	2,544	6	3	20	70	3,327	1,669	27	12	2,345	2,303	2,073	2,043	1,712	3,411
Morgan	3,417	2,912	5	1	8	39	4,092	2,274	14	7	3,348	2,382	2,383	2,452	2,679	3,646
Otero	4,311	8,640	2	2	16	61	5,531	3,155	38	5	4,154	4,008	3,555	3,677	3,269	5,342
Ouray	574	461	1	0	2	7	683	258	3	4	524	446	474	369	363	691
Park	637	505	0	0	1	9	732	443	7	2	604	475	587	426	487	665
Phillips	1,076	932	1	1	7	32	1,365	677	0	5	1,169	720	962	696	899	1,130
Pitkin	319	409	0	0	2	13	538	190	6	2	237	396	204	345	189	543
Prowers	2,505	2,497	3	2	18	32	2,938	2,105	16	11	2,442	2,311	2,060	2,165	2,042	3,020
Pueblo	12,756	21,637	6	8	62	572	24,924	9,904	336	54	12,911	21,108	11,565	19,931	10,854	24,080
Rio Blanco	981	752	0	0	1	17	1,082	663	3	0	912	668	832	504	781	961
Rio Grande	2,049	1,814	2	2	3	6	2,428	1,466	39	5	2,011	1,740	1,723	1,425	1,624	2,294
Routt	1,492	2,088	6	0	9	56	2,850	807	13	4	1,347	2,007	1,260	1,741	993	2,678
Saguache	914	1,009	0	0	4	10	1,300	600	12	7	928	862	778	717	781	1,128
San Juan	329	348	1	0	1	21	488	203	12	1	305	364	272	314	250	451
San Miguel	451	613	0	0	0	15	821	262	4	1	389	600	344	478	273	800
Sedgwick	1,020	834	0	1	2	10	1,158	697	5	4	1,010	706	901	695	828	1,036
Summit	292	378	0	0	3	3	493	174	1	2	273	323	269	308	181	486
Teller	748	779	0	0	2	16	1,136	411	3	4	609	769	553	749	483	1,016
Washington	1,636	1,304	3	0	4	11	1,750	1,202	4	7	1,550	1,105	1,377	972	1,515	1,426
Weld	12,446	10,934	11	12	65	171	15,209	8,246	76	38	12,219	9,909	11,270	9,483	9,037	14,226
Yuma	2,277	1,907	1	5	6	17	2,509	1,577	4	2	2,138	1,923	1,909	1,284	1,971	3,217
	239,714	267,288	228	214	1,678	6,115	340,719	165,069	2,981	1,352	226,949	245,441	216,816	234,401	168,928	332,752

	JUSTICES OF THE SUPREME COURT	GOVERNOR	LIEUTENANT GOVERNOR	SECRETARY OF STATE	STATE AUDITOR	STATE TREASURER	ATTORNEY GENERAL	SUPERINTENDENT OF PUBLIC INSTRUCTION		
41	21	4,269	5,550	4,235	5,224	3,719	6,059	103	4,809	5,528
48	2	1,900	2,287	1,637	2,071	1,636	1,859	33	2,168	2,098
41	46	6,446	7,395	6,513	7,069	5,782	8,844	141	7,551	6,796
6	3	419	502	381	373	384	6,677	4	480	474
5	4	1,177	1,092	953	956	390	567	4	1,336	1,126
86	95	1,244	1,528	1,036	1,469	1,127	1,216	15	1,542	1,323
4	3	9,725	8,772	8,892	8,484	1,120	1,777	18	9,284	7,991
3	3	1,350	2,024	1,278	1,847	8,120	11,140	495	10,894	11,908
1	10	702	577	621	583	1,135	2,355	19	1,515	1,908
20	12	788	736	808	896	741	665	7	788	508
18	5	1,743	1,526	1,498	1,331	699	941	14	891	717
1	4	941	1,299	941	1,256	1,681	1,774	65	1,940	1,522
2	1	961	934	863	1,533	1,008	1,470	11	1,169	1,361
46	5	525	349	427	903	896	919	6	1,096	848
44	5	2,910	2,932	2,599	2,549	483	427	7	591	309
3	3	69,816	85,225	76,118	84,181	2,641	3,017	70	3,213	2,856
3	3	234	362	241	280	287	364	13	310	389
57	1	951	678	908	593	332	278	8	1,011	661
1	3	729	961	659	593	860	840	48	807	940
98	77	1,091	754	965	666	586	1,206	14	802	838
26	13	15,154	11,870	13,029	11,747	976	962	14	1,077	1,116
16	5	4,050	3,919	3,407	3,339	11,873	14,127	252	14,638	11,875
1	3	2,179	2,185	2,040	2,008	13,506	14,322	73	14,638	15,514
5	5	255	255	264	278	3,725	4,644	33	4,096	3,862
0	0	789	635	740	565	2,424	2,167	33	2,335	2,090
0	2	1,012	1,240	953	1,142	213	368	7	295	279
54	7	1,225	1,407	1,115	1,447	620	908	7	808	649
71	3	1,727	3,299	1,489	3,167	833	1,568	27	1,010	1,231
5	1	309	256	297	223	102	97	1	126	84
30	55	9,101	8,692	9,058	8,501	1,693	3,613	58	1,770	1,823
33	9	702	559	559	553	313	346	3	313	339
35	3	1,747	1,086	1,517	986	7,780	10,859	187	9,367	8,317
3	5	763	1,595	748	1,389	572	745	10	745	567
27	2	2,473	2,397	2,230	1,955	1,062	1,691	13	1,863	1,927
33	6	8,282	6,655	8,382	6,180	815	659	39	796	856
3	3	3,452	6,968	2,852	6,707	2,256	2,874	41	2,565	2,335
27	0	1,226	1,086	1,076	947	8,278	6,536	107	9,312	6,882
0	3	4,406	1,880	2,768	2,292	3,047	7,716	129	3,249	3,789
19	8	6,120	7,964	5,470	7,165	1,067	1,386	8	1,252	1,319
12	4	129	179	127	157	2,694	3,565	30	3,303	2,531
36	4	1,197	997	1,120	853	6,679	7,945	124	6,162	7,630
27	12	1,385	1,478	1,181	1,252	102	218	4	132	157
14	7	2,345	2,303	2,073	2,043	1,058	1,223	20	1,180	1,285
38	5	3,348	2,382	2,983	2,452	1,198	1,882	19	1,416	1,566
3	4	4,154	3,555	3,677	3,269	2,113	2,818	51	2,429	2,307
0	2	524	446	474	369	3,358	1,597	19	2,429	2,307
7	5	604	475	587	426	3,597	2,407	41	3,294	2,250
16	2	1,169	720	962	696	4,252	4,844	43	4,258	3,996
36	11	2,377	396	204	345	548	548	8	531	466
3	54	2,442	2,311	2,060	2,165	544	600	8	637	477
39	5	12,911	21,108	11,565	19,931	924	1,031	28	1,106	755
13	0	912	668	832	504	216	477	13	241	342
12	4	2,011	1,740	1,723	1,425	2,246	2,667	28	2,529	2,057
12	7	1,347	2,007	1,260	1,741	11,711	22,921	483	12,761	15,884
4	1	928	862	778	717	799	871	6	890	995
1	1	305	364	272	314	1,776	1,718	21	1,978	2,104
5	4	389	600	344	478	1,174	2,386	49	1,369	1,553
1	4	1,010	706	901	695	847	927	10	927	1,007
3	2	273	323	269	308	312	424	13	311	333
4	4	609	769	553	749	351	424	15	394	422
76	38	1,550	1,105	1,377	972	536	495	9	979	788
4	2	12,219	9,909	11,270	9,483	218	276	3	276	348
		2,138	1,523	1,909	2,184	629	775	17	609	785
						1,112	1,410	17	1,592	1,721
						12,996	9,449	119	12,101	13,340
						2,271	1,550	20	2,207	2,390
81	1,352	226,949	245,441	216,816	234,401	197,795	297,550	5,702	255,965	229,928

STATE TREASURER		ATTORNEY GENERAL		SUPERINTENDENT OF PUBLIC INSTRUCTION		REGENTS OF THE UNIVERSITY OF COLORADO					
	Homer F. Bedford—D.	Duke W. Dunbar—R.	John W. Metzger—D.	Samuel D. Menin—Prog.	Nettie S. Freed—R.	Essie Bell Marple—D.	H. Vance Austin—D.	Ralph L. Carr—R.	Robert R. Knowles—R.	Frank P. Lynch, Jr.—D.	
19	6,822	4,222	6,059	103	4,809	5,528	5,617	5,037	4,104	4,928	Adams
36	2,668	1,359	2,380	33	2,168	2,093	2,172	2,362	1,793	1,871	Alamosa
82	8,844	6,677	7,653	141	7,551	6,796	7,350	7,488	6,506	6,571	Arapahoe
90	567	407	516	4	480	474	458	515	351	413	Archuleta
27	1,355	1,216	1,183	15	1,336	1,126	1,049	1,299	1,066	982	Baca
20	1,777	1,275	1,542	18	1,564	1,323	1,429	1,386	1,176	1,322	Bent
35	11,140	9,187	9,234	495	10,894	7,991	8,954	11,021	9,215	7,420	Boulder
26	2,355	1,889	2,045	19	1,515	1,908	1,866	1,608	1,308	1,802	Chaffee
99	665	720	525	7	788	508	512	755	632	450	Cheyenne
81	941	792	795	14	891	717	695	957	776	647	Clear Creek
53	1,825	1,774	1,622	65	1,940	1,522	1,307	2,202	1,617	1,217	Conejos
83	1,470	1,006	1,413	11	1,169	1,361	1,317	1,073	877	1,279	Costilla
41	1,079	987	930	6	1,096	848	862	1,104	905	830	Crowley
25	427	521	364	7	591	309	351	554	452	301	Custer
83	3,618	3,017	3,011	70	3,213	2,856	2,912	3,120	2,657	2,670	Delta
45	104,143	73,649	88,791	2,417	79,650	79,940	82,890	86,198	69,889	77,054	Denver
78	428	287	374	13	310	389	338	340	253	284	Dolores
60	840	945	707	8	1,011	661	634	1,019	906	561	Douglas
86	1,206	729	983	48	807	940	927	842	683	827	Eagle
76	962	1,077	802	14	1,116	838	741	1,133	1,019	637	Elbert
26	14,127	14,638	12,505	252	15,514	11,875	11,437	16,095	14,502	10,472	El Paso
05	4,644	4,096	4,083	73	4,428	3,862	3,808	4,393	3,747	3,601	Fremont
84	2,709	2,335	2,232	33	2,523	2,090	2,108	2,482	2,129	1,790	Garfield
13	368	261	295	7	297	279	255	337	247	237	Gilpin
20	908	808	688	7	868	649	624	918	718	544	Grand
33	1,568	1,010	1,309	27	1,135	1,231	1,210	1,237	1,011	1,062	Gunnison
02	97	126	72	1	120	84	66	128	117	63	Hinsdale
93	3,613	1,770	3,431	58	1,823	3,149	3,200	2,064	1,625	3,132	Huerfano
80	346	313	274	3	339	254	256	343	299	226	Jackson
65	10,859	9,367	9,040	187	9,789	8,317	8,651	10,279	9,081	7,807	Jefferson
49	729	745	593	10	773	567	573	727	656	530	Kiowa
91	1,305	1,863	1,055	13	1,927	1,079	1,105	1,851	1,560	889	Kit Carson
59	1,757	796	1,547	39	856	1,525	1,451	995	744	1,392	Lake
56	2,874	2,565	2,444	41	2,693	2,335	2,266	2,782	2,332	2,085	La Plata
78	8,317	9,312	6,882	107	10,037	6,189	6,735	9,947	8,856	5,734	Larimer
47	7,716	3,249	7,161	129	3,789	6,695	6,771	3,963	3,156	6,453	Las Animas
67	1,386	1,252	1,133	8	1,319	1,101	1,058	1,359	1,135	987	Lincoln
94	3,565	3,303	2,771	30	3,570	2,531	3,344	2,902	4,169	1,626	Logan
27	9,204	6,162	8,260	124	7,076	7,630	8,205	6,210	5,662	7,611	Mesa
02	218	132	183	4	157	167	158	172	126	146	Mineral
58	1,223	1,180	1,060	20	1,285	1,002	1,051	1,319	1,047	818	Moffat
98	1,882	1,416	1,577	19	1,471	1,566	1,369	1,639	1,238	1,244	Montezuma
13	2,818	2,429	2,345	51	2,534	2,307	2,223	2,641	2,190	1,892	Montrose
52	3,315	3,294	2,691	41	3,741	2,250	2,433	3,678	3,085	2,032	Morgan
56	4,844	4,258	3,996	43	4,729	3,578	3,963	4,510	3,848	3,623	Otero
58	548	531	466	8	563	437	414	603	492	359	Ouray
44	600	637	494	8	653	477	468	660	590	431	Park
24	1,031	1,106	755	28	1,163	737	871	1,098	1,010	634	Phillips
16	477	241	414	13	359	342	372	307	239	331	Pitkin
46	2,667	2,529	2,290	28	2,753	2,057	2,168	2,639	2,264	1,941	Prowers
11	22,921	12,761	20,763	483	18,890	15,884	19,887	15,080	12,229	19,753	Pueblo
99	871	890	749	6	995	660	612	998	886	536	Rio Blanco
76	2,078	1,978	1,794	21	2,104	1,651	1,525	2,242	1,867	1,454	Rio Grande
74	2,386	1,369	2,062	49	1,553	1,924	1,871	1,608	1,338	1,689	Routt
47	1,022	927	885	10	1,007	856	786	1,029	838	743	Saguache
67	424	311	365	13	333	347	316	394	305	283	San Juan
12	730	394	606	15	422	602	529	511	365	461	San Miguel
58	970	979	788	9	1,039	722	1,100	916	777	612	Sedgwick
18	424	276	348	3	309	324	299	317	265	294	Summit
17	956	609	785	17	679	718	714	771	555	640	Teller
55	1,410	1,592	1,112	17	1,721	1,087	1,119	1,647	1,417	951	Washington
45	12,497	12,101	10,217	119	13,340	9,206	10,039	13,167	11,685	8,695	Weld
22	2,014	2,207	1,559	20	2,390	1,452	1,570	2,301	1,927	1,243	Yuma
95	297,550	229,854	255,063	5,702	255,965	229,928	241,361	259,272	218,514	219,112	

ABSTRACT OF VOTES CAST AT A GENERAL ELECTION HELD ON TUESDAY, NOVEMBER 2ND, A. D. 1948, FOR INITIATED AND REFERRED MEASURES

	NO. 1 REORGANIZATION OF THE STATE DEPART- MENT OF EDUCATION		NO. 2 PARI MUTUEL LAW		NO. 3 LOCAL OPTION AMENDMENT		N. 4 \$55.00 OLD AGE PENSION AMENDMENT	
	Yes	No	Yes	No	Yes	No	Yes	No
Adams	4,138	2,655	5,243	3,186	2,382	6,986	3,407	5,936
Alamosa	1,711	969	1,901	1,293	1,023	2,760	1,321	2,521
Arapahoe	7,918	3,313	7,655	5,531	3,448	10,006	4,760	9,065
Archuleta	207	260	325	239	132	639	312	568
Baca	607	685	850	973	1,212	961	821	1,299
Bent	963	976	1,015	1,254	1,018	1,571	786	1,937
Boulder	11,020	4,603	8,475	8,647	5,458	13,113	7,309	11,330
Chaffee	1,455	1,134	1,760	1,100	547	2,702	782	2,541
Cheyenne	413	343	478	468	325	717	356	752
Clear Creek	782	387	877	459	274	1,162	525	947
Conejos	1,037	655	1,425	821	802	2,099	979	2,018
Costilla	567	276	735	253	308	1,662	354	1,700
Crowley	579	698	919	630	671	1,025	576	1,225
Custer	283	251	486	210	136	648	233	560
Delta	2,620	1,578	2,429	2,548	2,023	3,886	1,829	4,014
Denver	94,605	39,411	85,808	64,457	32,616	118,571	58,735	97,380
Dolores	208	141	274	218	209	368	246	319
Douglas	571	549	908	485	339	1,112	621	825
Eagle	633	475	790	518	275	1,258	447	1,059
Elbert	523	795	816	751	629	1,083	715	993
El Paso	11,409	10,866	13,296	11,882	7,959	18,073	10,052	16,649
Fremont	2,976	2,596	3,831	2,984	2,319	5,652	2,027	5,645
Garfield	2,065	1,114	2,315	1,316	862	3,294	1,310	2,873
Gilpin	174	197	316	155	63	458	140	390
Grand	636	404	851	454	272	1,085	566	809
Gunnison	983	640	1,198	698	320	1,814	843	1,305
Hinsdale	75	53	105	47	40	122	85	88
Huerfano	1,405	967	2,082	770	582	4,084	835	3,926
Jackson	287	108	332	147	129	362	268	243
Jefferson	10,428	4,199	10,137	6,953	3,999	13,491	6,673	11,100
Kiowa	449	387	531	542	571	626	448	745
Kit Carson	674	969	1,013	1,101	1,028	1,668	887	1,566
Lake	1,069	479	1,191	602	276	1,888	668	1,406
La Plata	2,049	1,191	2,610	1,423	1,023	3,708	1,772	2,947
Larimer	8,539	4,058	6,221	8,462	6,328	9,332	6,421	9,401
Las Animas	4,368	1,884	5,213	2,010	1,714	7,853	2,338	7,527
Lincoln	631	1,094	976	1,009	636	1,494	672	1,465
Logan	2,302	1,935	2,372	2,788	2,212	3,526	2,426	3,339
Mesa	7,394	3,613	7,029	5,341	4,109	9,833	4,396	9,610
Mineral	97	80	134	80	46	200	57	204
Moffat	805	739	952	859	450	1,707	768	1,288
Montezuma	1,051	765	1,399	909	630	1,887	991	1,549
Montrose	1,816	1,323	2,054	1,887	1,627	3,025	1,661	2,913
Morgan	2,888	1,533	2,791	2,377	2,078	3,360	2,090	3,529
Otero	3,845	1,891	3,327	3,649	3,398	4,434	3,042	4,719
Ouray	366	279	468	309	184	697	326	546
Park	441	300	627	277	149	849	336	677
Phillips	684	579	702	870	784	1,017	786	1,001
Pitkin	261	158	299	210	92	551	229	411
Prowers	1,879	1,532	2,149	1,958	1,873	2,662	1,433	3,174
Pueblo	17,444	9,834	21,595	8,761	7,697	24,968	10,441	22,474
Rio Blanco	512	490	871	410	225	1,207	615	761
Rio Grande	1,476	873	1,257	1,460	1,053	2,310	1,386	2,097
Routt	1,307	815	1,517	1,134	716	2,333	1,107	1,959
Saguache	637	417	768	537	401	1,260	583	1,135
San Juan	190	191	308	167	73	515	205	355
San Miguel	289	316	480	271	160	730	309	577
Sedgwick	680	473	809	630	541	1,112	621	975
Summit	219	139	321	157	81	478	204	362
Teller	488	441	869	333	200	1,143	329	1,069
Washington	803	1,017	1,126	1,075	896	1,583	971	1,473
Weld	9,835	5,824	7,607	10,424	7,469	13,757	8,160	12,464
Yuma	1,334	1,137	1,153	1,823	1,626	1,854	1,440	1,977
	238,100	128,054	238,371	183,292	120,799	334,331	166,031	295,712



**CONGRESSMAN, FIRST CONGRESSIONAL DISTRICT**

County	John A. Carroll —D		Christopher F. Cusack —R	
	P. E.	G. E.	P. E.	G. E.
Denver .....	45,797	106,096	25,624	57,541

**CONGRESSMAN, SECOND CONGRESSIONAL DISTRICT**

County	William S. Hill —R		George L. Bickel —D	
	P. E.	G. E.	P. E.	G. E.
Adams .....	1,373	4,669	1,167	5,918
Arapahoe .....	1,615	7,017	1,958	7,594
Boulder .....	2,525	9,061	2,231	10,330
Cheyenne .....	479	780	156	531
Clear Creek .....	294	888	254	735
Douglas .....	382	1,049	261	647
Elbert .....	453	1,183	298	750
Gilpin .....	84	298	168	293
Jefferson .....	3,992	9,344	2,354	9,163
Kit Carson .....	899	1,770	219	1,311
Larimer .....	3,070	9,730	1,343	6,854
Lincoln .....	617	1,300	444	1,142
Logan .....	1,147	3,386	780	2,901
Morgan .....	1,634	3,426	746	2,763
Phillips .....	429	893	168	1,094
Sedgwick .....	210	1,078	129	738
Washington .....	426	1,686	237	1,165
Weld .....	3,976	12,285	2,318	10,728
Yuma .....	523	2,025	625	1,922
	24,128	71,868	15,856	66,579

**CONGRESSMAN, THIRD CONGRESSIONAL DISTRICT**

County	J. Edgar Chenoweth —R		John H. Marsalis —D	
	P. E.	G. E.	P. E.	G. E.
Alamosa .....	386	2,166	853	2,169
Baca .....	530	1,491	344	1,068
Bent .....	349	1,442	376	1,465
Conejos .....	1,158	1,921	405	1,602
Costilla .....	273	1,030	467	1,419
Crowley .....	347	1,117	315	869
Custer .....	350	593	154	313
El Paso .....	5,385	16,613	3,131	11,157
Fremont .....	1,719	4,586	1,409	3,851
Huerfano .....	390	1,997	1,120	3,291
Kiowa .....	138	816	97	566
Las Animas .....	998	5,074	3,391	6,000
Mineral .....	48	172	84	156
Otero .....	1,746	4,623	963	3,854
Prowers .....	836	2,728	567	2,219
Pueblo .....	4,302	12,763	8,117	22,102
Rio Grande .....	460	2,353	308	1,512
Saguache .....	172	1,073	135	791
Teller .....	160	754	630	710
	19,747	63,312	22,866	65,114

**CONGRESSMAN, FOURTH CONGRESSIONAL DISTRICT**

County	Robert F. Rockwell —R		Wayne N. Aspinall —D	
	P. E.	G. E.	P. E.	G. E.
Archuleta .....	94	559	113	440
Chaffee .....	381	1,488	613	1,997
Delta .....	1,099	3,169	929	3,242
Dolores .....	143	393	206	357
Eagle .....	230	861	378	946
Garfield .....	811	2,529	639	2,235
Grand .....	258	860	140	688
Gunnison .....	232	1,206	410	1,257
Hinsdale .....	82	142	45	66
Jackson .....	180	368	111	236
Lake .....	179	966	759	1,487
La Plata .....	958	2,939	644	2,258
Mesa .....	1,676	5,313	2,139	9,735
Moffat .....	581	1,430	392	891
Montezuma .....	576	1,844	538	1,348
Montrose .....	1,046	2,810	727	2,242
Ouray .....	83	601	86	424
Park .....	183	644	152	491
Pitkin .....	66	390	257	352
Rio Blanco .....	392	1,054	203	648
Routt .....	486	1,441	908	2,161
San Juan .....	72	369	83	321
San Miguel .....	131	518	231	543
Summit .....	115	312	145	330
	10,054	32,206	10,848	34,695

**STATE SENATOR, FIRST SENATORIAL DISTRICT, DENVER COUNTY**

	P. E.	G. E.
Bishop, Neal D.—D.....	40,273	98,879
Blake, Claude W.—R.....	25,249	69,435
Bresnahan, C. A.—R.....	17,288	.....
Dunklee, Donald P.—D.....	40,646	98,574
Evans, George T.—R.....	20,111	60,719
*Fritts, C. A.—R.....	19,336	.....
Henry, Lawrence M.—D.....	40,501	96,170
Jacobson, Olof H.—R.....	21,476	62,326
Mazzula, Fred M.—R.....	6,651	49,719
McNichols, Stephen L. R.—D.....	41,466	94,994
Alberg, Gus—Prog.....	.....	2,078
Payne, Mildora—Prog.....	.....	1,724
Trujillo, Robert—Com.....	.....	911
Wiley, Charles R.—Prog.....	.....	1,798

\*Withdrew after Primary Election.

**STATE SENATOR, SECOND SENATORIAL DISTRICT**

County	Peter Culig, Jr. —D		W. I. Sanford —R	
	P. E.	G. E.	P. E.	G. E.
Pueblo .....	7,515	21,587	3,961	12,975

**STATE SENATOR, THIRD SENATORIAL DISTRICT**

County	Vernon A. Cheever —R		William R. Franklin —D	
	P. E.	G. E.	P. E.	G. E.
El Paso.....	5,096	16,065	2,932	11,315

**STATE SENATOR, FOURTH SENATORIAL DISTRICT**

County	Ben Veltri —D		L. T. Winger, Sr. —R	
	P. E.	G. E.	P. E.	G. E.
Las Animas .....	3,611	6,909	965	4,059

**STATE SENATOR, FIFTH SENATORIAL DISTRICT**

County	Wm. G. Gambill —D		Theo. G. Lashley —R	
	P. E.	G. E.	P. E.	G. E.
Boulder	2,296	10,845	2,577	8,089

**STATE SENATOR, SEVENTH SENATORIAL DISTRICT**

County	Wm. Albion Carlson —R	
	P. E.	G. E.
Weld	3,604	15,206

**STATE SENATOR, EIGHTH SENATORIAL DISTRICT**

County	Harold Ward Gardner —R		O. A. Saunders —R		Robert F. Metzler —D		Ed Moder —D	
	P. E.	G. E.	P. E.	G. E.	P. E.	G. E.	P. E.	G. E.
Douglas	231	219	1,050	291	605			
Jefferson	1,944	2,459	9,550	2,247	9,088			
	2,175	2,678	10,600	2,538	9,693			

**STATE SENATOR, NINTH SENATORIAL DISTRICT**

County	Lawrence Oliver —D		Edwin A. Rogers —R		C. L. Canda, Jr. —R	
	P. E.	G. E.	P. E.	G. E.	P. E.	G. E.
Custer	148	364	250	566	201	
Fremont	1,538	4,228	1,307	4,073	554	
	1,686	4,592	1,557	4,639	755	

**STATE SENATOR, ELEVENTH SENATORIAL DISTRICT**

County	Daniel I. J. Thornton —R	
	P. E.	G. E.
Delta	1,019	4,586
Gunnison	227	1,875
Hinsdale	78	165
	1,324	6,626

**STATE SENATOR, THIRTEENTH SENATORIAL DISTRICT**

County	Charles P. Murphy —R	
	P. E.	G. E.
Grand	255	1,221
Jackson	187	556
Moffat	545	1,815
Rio Blanco	339	1,288
Routt	467	2,401
	1,793	7,281

**STATE SENATOR, NINETEENTH SENATORIAL DISTRICT**

County	T. H. Akin —D		Tom Kimball —R		Harry Rogers —R	
	P. E.	G. E.	P. E.	G. E.	P. E.	G. E.
Archuleta	105	413	56	537	47	
La Plata	669	2,148	803	3,045	301	
Montezuma	657	1,979	76	1,227	574	
San Juan	83	279	67	418	14	
	1,514	4,819	1,002	5,227	936	

**STATE SENATOR, TWENTY-FIRST SENATORIAL DISTRICT**

County	Robert A. Theobald —D		Roy Burkett —R	
	P. E.	G. E.	P. E.	G. E.
Eagle	350	1,106	207	651
Garfield	592	2,621	762	1,989
Lake	811	1,677	178	760
Pitkin	276	468	55	227
Summit	146	313	115	356
	2,175	6,185	1,317	3,983

**STATE SENATOR, TWENTY-SECOND SENATORIAL DISTRICT**

County	La Roy H. Purdy —D		Richard H. Simon —R	
	P. E.	G. E.	P. E.	G. E.
Arapahoe	1,851	7,481	1,488	6,899
Elbert	277	779	403	1,084
	2,128	8,260	1,891	7,983

**STATE SENATOR, TWENTY-THIRD SENATORIAL DISTRICT**

County	James B. Ryan —R	
	P. E.	G. E.
Crowley	328	1,302
Otero	1,675	6,039
	2,003	7,341

**STATE SENATOR, TWENTY-FOURTH SENATORIAL DISTRICT**

County	Clifford J. Gobble —D		Willard B. Preston —R	
	P. E.	G. E.	P. E.	G. E.
Adams	1,229	6,187	1,326	4,232
Morgan	664	2,549	1,508	3,502
	1,893	8,736	2,834	7,734

**REPRESENTATIVES, THIRTY-SEVENTH GENERAL ASSEMBLY**

**ADAMS COUNTY**

	P. E.	G. E.
Wells, J. Wm.—D	1,170	5,731
Krogh, Alfred—R	1,306	4,755

**ALAMOSA AND COSTILLA COUNTIES**

County	Louis F. Higel —D		Floyd W. Skelton —R	
	P. E.	G. E.	P. E.	G. E.
Alamosa	970	2,586	1,818	
Costilla	463	1,421	1,031	
	1,433	4,007	2,849	

**ARAPAHOE AND ELBERT COUNTIES**

County	Robert D. Blackman —D		I. F. Thorne —D		A. O. Hill —R		B. T. Worrall —R		Dewey Taft Lin-Jef. G. E.	
	P. E.	G. E.	P. E.	G. E.	P. E.	G. E.	P. E.	G. E.	P. E.	G. E.
Arapahoe	1,753	7,835	1,592	6,944	1,513	6,546	1,306	5,459	1,210	
Elbert	259	629	231	520	369	1,079	441	1,301	185	
	2,012	8,464	1,823	7,464	1,882	7,625	1,747	6,760	1,395	



**ARCHULETA AND CONEJOS COUNTIES**

County	Earl H. Haynie —D		S. T. Parsons —R	
	P. E.	G. E.	P. E.	G. E.
Archuleta	103	490	86	495
Conejos	442	1,435	1,291	2,539
	545	1,925	1,377	3,034

**BACA COUNTY**

County	Warren O. Brown —R	
	P. E.	G. E.
Baca	521	2,036

**BENT AND KIOWA COUNTIES**

County	H. B. Amyx —D		Oakley Wade —R	
	P. E.	G. E.	P. E.	G. E.
Bent	370	1,180	341	1,729
Kiowa	109	802	130	607
	479	1,982	471	2,336

**BOULDER COUNTY**

County	P. E.	G. E.
Paddock, William L.—D	2,291	10,806
Steele, Leslie R.—R	2,476	10,862
Faulkner, Dean M.—R	2,414	10,674
Hedgecock, A. Glenn—Prog		2,122

**CHAFFEE AND LAKE COUNTIES**

County	Frank E. Kendrick, Jr. —D		Frank Fehling —R	
	P. E.	G. E.	P. E.	G. E.
Chaffee	1,776		321	1,763
Lake	1,530		181	948
	3,306		502	2,711

**CHEYENNE AND LINCOLN COUNTIES**

County	John E. Jacobs —D		V. H. Johnson —R	
	P. E.	G. E.	P. E.	G. E.
Cheyenne	171	666	485	692
Lincoln	450	1,188	588	1,183
	621	1,854	1,073	1,875

**CLEAR CREEK, EAGLE, GILPIN, PITKIN AND SUMMIT COUNTIES**

County	Frank P. Conroy —R		Ellis P. Lupton —D	
	P. E.	G. E.	P. E.	G. E.
Clear Creek	270	982	255	982
Eagle	204	698	341	1,084
Gilpin	81	244	174	345
Pitkin	51	264	257	432
Summit	114	256	155	396
	720	2,115	1,182	3,239

**CROWLEY AND OTERO COUNTIES**

County	James G. McConnell —D		Henry Bledsoe —R		Arlie M. Ward —R	
	P. E.	G. E.	P. E.	G. E.	P. E.	G. E.
Crowley	329	1,159	288	1,031	313	1,192
Otero	848	4,135	1,599	5,520	1,467	4,344
	1,177	5,294	1,887	6,551	1,780	5,536

**CUSTER AND FREMONT COUNTIES**

County	Curtis R. Hanawalt —D		Leonard M. Bentley —R		A. H. Sparks —R
	P. E.	G. E.	P. E.	G. E.	P. E.
Custer	144	326	218	573	179
Fremont	1,501	4,238	995	4,062	901
	1,645	4,564	1,213	4,635	1,080

**DELTA COUNTY**

County	Mark R. Clay —R	
	P. E.	G. E.
Delta	1,068	4,779

**CITY AND COUNTY OF DENVER**

	P. E.	G. E.
Abernethy, O. A.—D	28,963	88,612
Anderson, William Ward—R	19,263	62,196
Armatas, N. Peter—D	11,587	
Arthur, L. James—R	18,334	57,928
Basil, George—D	18,979	
Bennett, Charles E.—D	27,471	93,542
Best, Whitman—R	21,038	67,966
Bezoff, Ben—D	28,239	94,301
Blake, Milton J.—R	22,131	68,012
Brewer, Howard J.—D	21,936	
Burch, Palmer L.—R	19,315	63,621
Chapman, Marshall Yale—R	14,003	
Chrysler, Harry F.—R	24,746	69,118
Cobb, Norman E.—D	31,140	93,266
Conrad, John E.—R	18,215	67,317
Cooke, Ellsworth E.—R	16,609	57,572
Crofts, Alfred—D	20,987	
Crowley, Clem—D	34,933	91,825
Davis, Vera Ames—D	20,933	
Eaton, Samuel J.—D	24,994	82,728
Gabbert, Noble V.—R	13,330	
Gableman, Cyprena Turcotte—D	8,280	
Gibson, Otis J.—R	19,606	65,379
Hamburg, Alfred J.—D	23,822	80,452
Hays, Frank L. Jr.—R	21,108	70,059
Jacobucci, Jean John—D	18,402	
Jennings, Henry L.—D	22,731	
Kelley, Andrew D.—D	31,422	81,331
Kokenzie, Henry F.—D	18,486	
Kramer, Shirley M.—D	25,910	80,019
Lewis, William A.—R	17,267	66,478
Lindquist, Oscar A.—R	18,809	66,604
Lloyd, Thomas L.—R	15,361	59,090
Macdonald, John D.—D	25,845	82,827
Maker, Joseph E.—R	10,397	
Mann, Earl W.—R	21,241	69,093
Milliken, Charles R.—R	21,826	63,979
Morton, James A.—R	14,176	
McCarthy, Thomas E.—R	15,173	
O'Connell, Max H.—R	10,658	
O'Neill, Francis P.—D	27,620	78,912
Pile, Roscoe—D	26,809	85,749
Quiatt, Marshall—D	31,324	89,182
Radetsky, James Bernard—D	26,783	88,985
Roth, Herrick S.—D	26,976	83,392
Schalow III, Berthold E.—R	5,755	
Collings, Lillian Grace—Const. O.		1,436
Gutmer, Joseph—Prog		2,239
Rogers, Tracy Roy—Com.		1,079
Sena, Alfonso—Prog		2,051
Stotts, Edna—Prog		2,055

**DOLORES, MONTEZUMA AND SAN MIGUEL COUNTIES**

County	Elizabeth E. Pellet —D		Homer H. Norton —R	
	P. E.	G. E.	P. E.	G. E.
Dolores	272	489	130	286
Montezuma	657	1,763	523	1,493
San Miguel	257	788	112	290
	1,186	3,040	765	2,069

**DOUGLAS, PARK AND TELLER COUNTIES**

County	H. N. Archambault —D		Homer E. Ira —R	
	P. E.	G. E.	P. E.	G. E.
Douglas	282	808	321	876
Park	139	546	144	585
Teller	662	961	139	454
	1,083	2,315	604	1,915

**EL PASO COUNTY**

County	P. E.	G. E.
Chamberlin, Harold J.—D	2,811	13,913
Nelson, Carroll A.—R	4,743	20,640
Phillips, John O.—R	4,685	20,405
Weissenfuh, Carl K.—R	4,469	15,616

**GARFIELD AND RIO BLANCO COUNTIES**

County	Mary L. Bell —D		Frank V. Kennedy —R	
	P. E.	G. E.	P. E.	G. E.
Garfield	585	2,310	776	2,036
Rio Blanco	201	643	386	1,094
	786	2,953	1,162	3,130

**GRAND, MOFFAT AND ROUTT COUNTIES**

County	Pat Magill, Jr. —D		Carl R. Taussig —R	
	P. E.	G. E.	P. E.	G. E.
Grand	152	786	257	770
Moffat	400	1,257	538	1,047
Route	960	2,588	467	1,030
	1,512	4,631	1,262	2,847

**GUNNISON, HINSDALE AND SAGUACHE COUNTIES**

County	Montana F. Smith —D		Rocco Santarelli —R	
	P. E.	G. E.	P. E.	G. E.
Gunnison	23	1,441	219	992
Hinsdale	15	146	71	65
Saguache	32	1,198	151	697
	70	2,785	441	1,754

**HUERFANO COUNTY**

County	P. E.	G. E.
Abe, Richard—D	1,386	3,518
Johnson, H. W. W. (Bill)—R	388	1,835

**JACKSON AND LARIMER COUNTIES**

County	E. J. (Ted) Herring —R		Victor Hanson —R		A. J. Becksted —R
	P. E.	G. E.	P. E.	G. E.	P. E.
Jackson	112	490	197	546	35
Larimer	2,386	13,283	2,251	13,191	1,394
	2,498	13,773	2,448	13,737	1,429

**JEFFERSON COUNTY**

County	P. E.	G. E.
Browne, John R.—R	2,733	9,073
Duke, Richard H.—R	1,526	.....
Tinsley, Mansur—D	2,271	9,336

**KIT CARSON COUNTY**

County	P. E.	G. E.
Rhoades, Harley—R	800	1,905
Yersin, Bill—D	251	1,304

**LAS ANIMAS COUNTY**

County	P. E.	G. E.
Cordova, Tony—R	750	2,748
Horsman, John—D	3,353	7,777
Johnson, John—D	3,446	7,830
Salas, U. A. (Lee)—R	738	2,693

**LA PLATA AND SAN JUAN COUNTIES**

County	Charles E. Armstrong —D		R. Bruce Sullivan —R	
	P. E.	G. E.	P. E.	G. E.
La Plata	692	2,330	929	2,814
San Juan	88	404	77	297
	780	2,734	1,006	3,111

**LOGAN COUNTY**

County	Harley N. Beery —D		T. E. Breezley —R	
	P. E.	G. E.	P. E.	G. E.
Logan	860	3,282	1,140	3,076

**MESA COUNTY**

County	P. E.	G. E.
Barker, Tom—D	.....	8,090
Beede, Wayne—D	1,674	7,571
Evans, Jack—R	1,541	7,022
Porter, Robert M.—R	1,338	5,713
Reeds, Frank H.—D	1,872	.....

**MINERAL AND RIO GRANDE COUNTIES**

County	Elizabeth A. Conour —D		Jas. E. Ward —R	
	P. E.	G. E.	P. E.	G. E.
Mineral	88	181	45	148
Rio Grande	281	1,554	457	2,316
	369	1,735	502	2,464

**MONTROSE AND OURAY COUNTIES**

County	Jerry Foster —D		John L. Stivers —R	
	P. E.	G. E.	P. E.	G. E.
Montrose	721	2,677	990	2,276
Ouray	85	539	74	482
	806	3,216	1,064	2,758

**MORGAN COUNTY**

County	P. E.	G. E.
Ott, Millicent—D	687	2,527
Schooley, O. B.	1,504	3,540

**PHILLIPS AND SEDGWICK COUNTIES**

County	Merle Hiatt —D		Roy E. Owens —R	
	P. E.	G. E.	P. E.	G. E.
Phillips	158	688	425	1,278
Sedgwick	126	882	201	958
	284	1,570	626	2,236

**PROWERS COUNTY**

	P. E.	G. E.
Smartt, Hackett—D.....	612	3,105
Strain, Cora R.—R.....	823	1,887

**PUEBLO COUNTY**

	P. E.	G. E.
Craddock, Adeline B.—D.....	4,095	
Dameron, T. H.—D.....	6,022	22,009
Haynie, Gertrude C.—D.....	3,437	
Hobbs, R. F.—D.....	4,239	19,837
Hudspeth, Elizabeth—R.....	3,338	13,982
Husted, Frank—R.....	3,386	12,933
Leach, Richard F.—R.....	3,333	12,750
Long, Ward B.—R.....	2,067	
Taylor, Robert W.—R.....	3,745	13,364
Tyler, William H.—D.....	4,848	19,784
Utt, James A.—D.....	4,103	
Welsh, Wm. R., Jr.—D.....	4,348	19,887

**WASHINGTON COUNTY**

County	Horace H. Holt		Roy R. Rowland	
	P. E.	G. E.	P. E.	G. E.
Washington	398	1,588	263	1,255

**WELD COUNTY**

	P. E.	G. E.
Armstrong, Timothy H.—D.....	1,990	11,944
Christensen, Henry H.—D.....	1,994	10,732
DePaolo, Nick—D.....	1,904	8,624
Houtchens, Rodger I.—D.....	2,008	11,806
Kent, Elsie A.—R.....	3,584	10,438
Lamb, Allen B.—R.....	3,580	11,314
Ogilvie, James S.—R.....	3,648	11,936
Parham, James A.—R.....	3,554	10,495

**YUMA COUNTY**

County	C. J. Bennett		Walter R. Stalker	
	P. E.	G. E.	P. E.	G. E.
Yuma	555	1,599	502	2,288

**DISTRICT JUDGES**

**FIRST DISTRICT**

County	Harold H. Davies		Osmer E. Smith	
	P. E.	G. E.	P. E.	G. E.
Adams	1,218	7,321	1,218	6,525
Arapahoe	1,494	11,299	1,391	9,761
Clear Creek	246	1,164	248	1,134
Gilpin	67	407	78	362
Jefferson	3,203	13,532	3,502	12,663
	6,228	33,723	6,437	30,445

**SECOND DISTRICT**

	P. E.	G. E.
Black, William A.—R.....	23,788	80,746
Brewster, Guy K.—R.....	20,244	58,586
Cook, Joseph E.—R.....	25,137	89,660
Day, Edward C.—D.....	40,928	86,529
Frantz, Albert T.—D.....	40,266	68,283
Hickey, Frank E.—R.....	19,328	59,233
Knauss, Francis J.—R.....	25,752	77,018
Larwill, Langdon H.—R.....	15,016	
Lindsay, Henry Sherman—D.....	41,950	102,770
Miles, Floyd F.—D.....	40,612	73,565
Neff, Joseph D.—R.....	20,356	58,875
Sabin, James N.—R.....	18,513	
Shepherd, Ellett N.—D.....	40,560	76,168
Steele, Robert W.—D.....	41,742	101,264
Walsh, Joseph J.—D.....	42,134	93,984
Webster, Harold M.—R.....	24,185	66,397

**SECOND DISTRICT TO FILL VACANCY**

	P. E.	G. E.
Doyle, William E.—D.....		80,801
Ruston, Paul A.—R.....		62,315

**THIRD DISTRICT**

County	John L. East		William B. Nicolas	
	P. E.	G. E.	P. E.	G. E.
Huerfano	1,412	3,473	383	1,882
Las Animas	3,631	8,275	895	2,519
	5,043	11,748	1,278	4,401

**FOURTH DISTRICT**

County	John M. Meikle		G. Russell Miller	
	P. E.	G. E.	P. E.	G. E.
Douglas	270	852	320	1,041
Elbert	265	1,079	403	1,257
El Paso	3,174	18,869	5,076	19,386
Kit Carson	215	1,485	790	1,930
Lincoln	453	1,384	567	1,441
Teller	678	1,014	151	713
	5,055	24,683	7,307	25,768

**FIFTH DISTRICT**

County	William H. Luby	
	P. E.	G. E.
Eagle	234	1,504
Lake	190	1,889
Summit	124	525
	548	3,918

**SIXTH DISTRICT**

County	John H. Galbreath		James N. Noland	
	P. E.	G. E.	P. E.	G. E.
Archuleta	90	614	118	445
Dolores	115	201	257	534
La Plata	864	1,782	769	3,506
Montezuma	484	847	671	2,346
San Juan	75	253	100	449
	1,628	3,697	1,915	7,279

**SIXTH DISTRICT TO FILL VACANCY**

County	John H. Galbreath		James N. Noland	
	P. E.	G. E.	P. E.	G. E.
Archuleta		21	111	23
Dolores		8	239	21
La Plata		110	712	671
Montezuma		42	614	128
San Juan		1	93	6
		182	1,769	849

**SEVENTH DISTRICT**

County	Dan H. Hughes		Paul L. Littler	
	P. E.	G. E.	P. E.	G. E.
Delta	761	3,623	986	3,438
Gunnison	356	1,500	200	1,201
Hinsdale	45	88	74	112
Mesa	1,974	9,142	1,626	8,820
Montrose	738	2,986	1,009	2,932
Ouray	78	582	75	556
San Miguel	233	703	111	504
	4,185	18,624	4,081	17,563

## ABSTRACT OF VOTES CAST

## EIGHTH DISTRICT

County	George H. Bradfield —R		Claude C. Coffin —R	
	P. E.	G. E.	P. E.	G. E.
	Boulder	2,497	14,696	2,480
Jackson	148	538	142	437
Larimer	2,823	13,253	2,850	13,193
Weld	3,740	18,041	3,512	16,242
	9,208	46,528	8,984	43,723

## NINTH DISTRICT

County	John R. Clark —R	
	P. E.	G. E.
	Garfield	788
Pitkin	70	506
Rio Blanco	372	1,414
	1,230	5,344

## TENTH DISTRICT

County	Harry Leddy —D		J. Arthur Phelps —R	
	P. E.	G. E.	P. E.	G. E.
	Crowley	325	1,266	330
Otero	931	5,071	1,658	5,720
Pueblo	7,472	25,371	3,971	20,311
	8,728	31,708	5,959	27,400

## ELEVENTH DISTRICT

County	Jos. D. Blunt —R	
	P. E.	G. E.
	Chaffee	300
Custer	351	718
Fremont	1,765	6,226
Park	165	833
	2,581	10,264

## TWELFTH DISTRICT

County	Joseph H. Thomas —R	
	P. E.	G. E.
	Alamosa	393
Concejos	1,282	2,586
Costilla	271	1,318
Mineral	48	242
Rio Grande	435	2,876
Saguache	164	1,316
	2,593	11,393

## THIRTEENTH DISTRICT

County	Raymond L. Sauter —R		George C. Twombly —R	
	P. E.	G. E.	P. E.	G. E.
	Logan	1,142	5,351	952
Morgan	1,270	4,132	1,597	5,009
Phillips	393	1,515	348	1,322
Sedgwick	192	1,359	174	1,176
Washington	370	2,114	353	1,828
Yuma	478	2,762	447	2,669
	3,845	17,233	3,871	16,473

## FOURTEENTH DISTRICT

County	Addison M. Gooding —D	
	P. E.	G. E.
	Grand	132
Moffat	396	1,849
Routt	972	3,124
	1,500	6,137

## FOURTEENTH DISTRICT TO FILL VACANCY

County	Addison M. Gooding —D	
	P. E.	G. E.
	Grand	123
Moffat	356	1,736
Routt	836	2,884
	1,315	5,706

## FIFTEENTH DISTRICT

County	Alfred A. Arraj —R		Averill C. Johnson —R		Alfred Todd —D	
	P. E.	G. E.	P. E.	G. E.	P. E.	G. E.
	Baca	562	1,801	78	327	829
Bent	59	1,292	346	396	1,553	
Cheyenne	169	718	324	155	563	
Kiowa	78	703	75	100	665	
Prowers	530	2,703	389	556	2,279	
	1,398	7,217	1,212	1,534	5,889	

## DISTRICT ATTORNEYS

## FIRST DISTRICT

County	Clement R. Hackethal —D		Martin C. Molholm —R	
	P. E.	G. E.	P. E.	G. E.
	Adams	1,103	6,074	1,286
Arapahoe	1,863	7,910	1,522	6,355
Clear Creek	272	1,029	280	614
Gilpin	200	360	72	222
Jefferson	2,191	9,368	3,885	9,304
	5,629	24,741	7,045	20,604

## SECOND DISTRICT

County	Bert M. Keating —D		Richard H. Shaw —R	
	P. E.	G. E.	P. E.	G. E.
	Denver	43,860	93,794	26,806

## THIRD DISTRICT

County	O. F. Adams, Jr. —R		John N. Mabry —D	
	P. E.	G. E.	P. E.	G. E.
	Huerfano	361	2,273	1,323
Las Animas	948	5,312	3,504	5,808
	1,309	7,585	4,827	8,892

**FOURTH DISTRICT**

County	John F. Bennett —D		Albert B. Logan —R	James F. Quine, Jr. —R	
	P. E.	G. E.	P. E.	P. E.	G. E.
Douglas	264	749	210	168	902
Elbert	272	825	190	258	1,034
El Paso	3,085	13,117	2,130	3,495	14,592
Kit Carson	210	1,185	442	433	1,699
Lincoln	448	1,188	357	282	1,140
Teller	646	767	75	102	638
	4,925	17,831	3,404	4,738	20,005

**FIFTH DISTRICT**

County	William J. Meehan —D	
	P. E.	G. E.
Eagle	400	1,566
Lake	851	2,039
Summit	169	526
	1,420	4,131

**SIXTH DISTRICT**

County	George R. Armstrong —R		Byron V. Bradford —R	George E. Dilts —D	
	P. E.	G. E.	P. E.	P. E.	G. E.
Archuleta	66	525	43	101	449
Dolores	95	323	68	217	429
La Plata	521	2,370	603	641	2,801
Montezuma	498	1,352	149	595	1,912
San Juan	34	363	46	80	333
	1,214	4,933	909	1,634	5,924

**SIXTH DISTRICT TO FILL VACANCY**

County	George R. Armstrong —R		George E. Dilts —D	
	P. E.	G. E.	P. E.	G. E.
Archuleta	603	85	11	
Dolores	399	190	28	
La Plata	2,784	571	268	
Montezuma	1,679	545	129	
San Juan	470	68	6	
	5,935	1,459	442	

**SEVENTH DISTRICT**

County	Harrison Loesch —R		*Jerome A. Paul —D		Amos L. Raso —R		Felix L. Sparks —D	
	P. E.	P. E.	P. E.	G. E.	P. E.	G. E.	P. E.	G. E.
Delta	531	787	588	2,268	3,882			
Gunnison	119	367	105	1,059	1,338			
Hinsdale	55	41	19	128	78			
Mesa	669	1,940	1,228	6,528	8,370			
Montrose	800	665	303	2,353	2,563			
Ouray	54	74	33	570	449			
San Miguel	59	206	72	475	568			
	2,287	4,080	2,348	13,381	17,248			

\*Withdrew after Primary Election.

**EIGHTH DISTRICT**

County	George C. Pomainville —D		M. E. H. "Marc" Smith —R	
	P. E.	G. E.	P. E.	G. E.
Boulder	2,058	9,391	2,535	9,319
Jackson	109	251	152	331
Larimer	1,156	6,155	2,903	9,773
Weld	1,904	8,339	3,702	13,898
	5,227	24,136	9,292	33,321

**NINTH DISTRICT**

County	Robert Delaney —D		William A. Mason —R		Neil S. Mincer —R
	P. E.	G. E.	P. E.	G. E.	P. E.
Garfield	640	2,707	622	2,047	256
Pitkin	301	505	62	223	6
Rio Blanco	222	1,037	179	693	268
	1,163	4,249	863	2,963	530

**TENTH DISTRICT**

County	Sara Roe Bauer —D		Joseph R. Botleman —D		Vincent Cristiano —D	S. Philip Cabibi —R	Charles F. Keen —R	
	P. E.	G. E.	P. E.	G. E.	P. E.	P. E.	P. E.	G. E.
Crowley	89	242	1,006	43	61	273	885	
Otero	325	564	4,230	148	323	1,337	3,848	
Pueblo	1,813	3,857	22,598	2,736	1,569	2,695	12,012	
	2,227	4,663	27,834	2,927	1,953	4,305	16,745	

**ELEVENTH DISTRICT**

County	Emerson M. Eagleton —R		John Stump Witcher —D	
	P. E.	G. E.	P. E.	G. E.
Chaffee	256	1,614	524	1,861
Custer	344	485	154	443
Fremont	1,699	3,337	1,629	5,175
Park	173	570	155	587
	2,472	6,006	2,462	8,066

**TWELFTH DISTRICT**

County	John Ira Green —R		Leonard M. Haynie —D	
	P. E.	G. E.	P. E.	G. E.
Alamosa	411	2,550	902	1,857
Conejos	1,406	2,748	419	1,284
Costilla	272	1,265	488	1,263
Mineral	47	174	86	157
Rio Grande	435	2,293	313	1,585
Saguache	161	1,144	143	753
	2,732	10,174	2,351	6,899

**THIRTEENTH DISTRICT**

County	William B. Paynter —R	
	P. E.	G. E.
Logan	1,120	5,276
Morgan	1,602	5,117
Phillips	412	1,568
Sedgwick	202	1,396
Washington	402	2,263
Yuma	516	3,116
	4,254	18,736

COUNTY OFFICERS

COUNTY	COUNTY SEAT	COUNTY CLERK	COUNTY TREASURER	ASSESSOR	SHERIFF	COUNTY JUDGE	CLERK COUNTY C
1 Adams	Brighton	Clyde L. Miller—R.	Ben H. Tyler—D.	L. D. Burnside—D.	Homer W. Mayberry—R.	R. Boyd Garrison—R.	Mrs. Bernice Ward—R.
2 Alamosa	Alamosa	C. Elmer Storms—D.	Mrs. Elizabeth P. Joyce—D.	Mrs. Irene Shakespeare—D.	Jimmie L. Cockrum—D.	Gilbert H. Sheesley—R.	Edith Hansen
3 Arapahoe	Littleton	Earl K. Downing—R.	Charles B. Sinclair—R.	Ira Van Dreal—R.	Charles L. Foster—R.	Henry Bruce Teller—D.	J. T. Robertson—D.
4 Archuleta	Pagosa Springs	Philip R. Johnson—D.	Earl L. Lattin—R.	Earl Lattin—D.	Norman Ottoway—D.	J. T. Martinez—R.	J. T. Martinez—R.
5 Baca	Springfield	Mrs. Margaret L. Reschke—R.	Mrs. Hannah Baker—D.	Hiram T. Burton—D.	Joe Dennett—R.	W. R. Randall—D.	Willard J. Allen
6 Bent	Las Animas	Mrs. Myrtle V. Johnson—D.	Floyd C. Smith—R.	R. C. Banta—D.	L. E. Brookshire—D.	Willard J. Allen—D.	Willard J. Allen
7 Boulder	Boulder	Jack Londen—R.	Lynn R. McIntosh—R.	Aylwin A. Smith—R.	Arthur T. Everson—R.	William E. Buck—R.	R. G. Sutherland
8 Chaffee	Salida	Jos. T. McDonough—D.	Chas. C. White—D.	Laurence E. England—D.	Emmet L. Shewalter—D.	Harry L. McGinnis—D.	Arthur E. Smith
9 Cheyenne	Cheyenne Wells	Mrs. Ava L. Crosby—R.	Mrs. Marie A. McMillen—R.	Stanley J. Robinson—D.	E. H. Beyer—R.	R. A. Martinson—R.	R. A. Martinson
10 Clear Creek	Georgetown	Kenneth E. Moscript—R.	J. Ben Foley—D.	Edmund Rowse—R.	James E. Sacra—R.	William E. Walthers—R.	William E. Walthers
11 Conejos	Conejos	Reginaldo Garcia, Jr.—R.	Antonio Lucero—D.	Leandro R. Jaramillo—R.	Gilbert De Herrera—R.	J. Fidel Chavez—D.	Kathleen Haynie—D.
12 Costilla	San Luis	Abel I. Vigil, Jr.—R.	Joe M. Espinoza—D.	Ernest A. Vigil—D.	Mike Rampa—D.	A. Prax Ortega—D.	—
13 Crowley	Ordway	C. C. Biddison—R.	Lucas E. Davis—R.	Harry Morgan—R.	J. J. O'Connell—D.	E. M. Stroud—D.	Mrs. Anne M. Bauman
14 Custer	Westcliffe	Mrs. Stella Byrne—D.	Olen A. Kennon—R.	Floyd A. Thompson—R.	Fred Squire—R.	August N. Menzel—R.	August N. Menzel—R.
15 Delta	Delta	O. A. Ehrsgott—R.	Clement A. Bowle—R.	J. B. Drake—D.	Leonard L. Wilcox—R.	Vance O. Kilmer—R.	Mrs. Lucile S. Ford
16 Denver	Denver	Miss Mae Hynes	Roy W. Cass—D.	Roy W. Cass—D.	Charles E. Ackerly—R.	Charles E. Kettering—D.	John L. Griffith—D.
17 Dolores	Dove Creek	Mrs. Irma D. Morris—D.	Mrs. Lauphine Elliott—D.	Floyd I. Davis—R.	Frank L. McKibben—D.	George E. Hicks—D.	Mrs. Lauphine Elliott
18 Douglas	Castle Rock	Charles A. Prescott—D.	William J. Buckner—R.	Ross W. Johnston—R.	John L. Hammond—R.	Walter E. Jesiop—D.	Walter E. Jesiop—D.
19 Eagle	Eagle	Thomas F. McBrean—R.	Forrest W. Cave—D.	Timothy J. Sullivan, Jr.—R.	W. M. Wilson—R.	Mrs. Mabel A. Ethel—D.	Mrs. Mabel A. Ethel
20 Elbert	Kiowa	Mrs. Delpha S. Moreland—D.	C. W. Elsner—R.	Orley Crouch—R.	G. R. Brown—R.	W. V. Kennett—D.	W. V. Kennett—D.
21 El Paso	Colorado Springs	Charles Ozias—D.	W. J. Graham—R.	A. W. Sparkman—R.	Norman E. Short—D.	Irvin E. Jones—D.	Harry A. Thompson
22 Fremont	Canon City	Miss Mary J. McDonough—D.	Leslie O. Burris—R.	J. W. Haymaker—R.	Gilbert E. Ackelbein—D.	C. A. Fredrickson—R.	Miss Florence Gerlach
23 Garfield	Glenwood Springs	Charles S. Keegan—D.	G. B. Helm—R.	Richard Wilson—R.	Edward Taylor—R.	Mrs. Marie Holloway—R.	—
24 Gilpin	Central City	Miss Marie Garwood—D.	Hugh L. Lawry—R.	Victor J. Tavanatti—R.	Kenneth McKenzie—D.	William S. Barrick—D.	—
25 Grand	Hot Sulphur Springs	R. O. Throckmorton—R.	Carl F. Fischer—R.	Frank Stafford—D.	Chester McQuary—R.	Wilburn W. Shiflet—R.	—
26 Gunnison	Gunnison	Mrs. Ethel A. Sisson—R.	M. J. Hogan—D.	Karl Zugelder—D.	Herb G. Lashbrook—R.	C. C. McWilliams—D.	Miss Mary Luchetta
27 Hinsdale	Lake City	Mrs. Mabel B. Rawson—R.	Mrs. Pearl McCloughan—R.	Mrs. Annie M. Doran—R.	Marvin J. Rexroad—R.	E. W. Soderholm—R.	E. W. Soderholm—R.
28 Huerfano	Walsenburg	Damaso Vigil, Jr.—D.	Miss Emma Bellotti—D.	Charles Duran—R.	Claud Swift—D.	Joseph A. Barron—D.	Mrs. Pauline Sanchez
29 Jackson	Walden	Mrs. Lillian F. Mitchell—D.	Miss Florence A. Wilkins—D.	Harold E. Hampton—D.	Norman C. Woodruff—R.	J. A. McNamara—D.	J. A. McNamara—D.
30 Jefferson	Golden	Robert W. Newton—R.	Walter Brown—D.	Kenneth Fenwick—D.	Carl E. Enlow—R.	C. D. Stoner—R.	G. B. Hawley—R.
31 Kiowa	Eads	Art Bradbury—R.	Donald Durrett—R.	Edwin Immer—R.	Eugene C. Kelley—R.	George B. Black—R.	George B. Black
32 Kit Carson	Burlington	Miss Mary E. Evans—R.	Sam E. Travis—R.	Parke H. Guthrie—R.	O. C. Dunlap—R.	E. M. Short—R.	E. M. Short—R.
33 Lake	Leadville	John Gregory—D.	Emmett Irwin—D.	John J. Bohan—D.	Clarence McMurrugh—D.	Walter A. Johnson—D.	Minnette Walsh—D.
34 La Plata	Durango	Mrs. Edith C. Kiel—R.	Thomas Mason—R.	John R. Brennan—R.	Chester J. Petty—R.	W. Bruce Jacobson—R.	Miss Bonnie Schipper
35 Larimer	Fort Collins	C. Marion Bradford—R.	C. S. Ickes—R.	W. Ed. Wright—R.	Ray M. Barger—R.	Harry H. Hartman—R.	N. G. Cushing
36 Las Animas	Trinidad	Ed Bustamante—D.	James Ingles—D.	Isaac Sandoval—D.	Felix Garcia—D.	William T. Eckhart, D.	Nick Bisulco—D.
37 Lincoln	Hugo	L. R. Howe—R.	Wm. M. Jones—D.	E. J. Kidder—R.	Merlin H. Koerner—R.	T. G. Watson—D.	Miss Mary Lou Musgr
38 Logan	Sterling	Carroll G. Bryan—R.	W. F. Alexander—D.	J. H. Berkstresser—R.	E. M. Brown—R.	Joseph A. Davis—R.	Mrs. Marguerite Dersl
39 Mesa	Grand Junction	Miss Annie M. Dunston—D.	Burrell C. Reynolds—D.	H. V. Zimmerman—R.	E. E. Redmon—D.	Adair J. Hotchkiss—D.	Miss Gladys Moss—D.
40 Mineral	Creede	Mrs. Jane A. Oates—R.	Wm. T. Jackson—R.	John G. Dabney—D.	Harry L. Larson—D.	Loyd J. Wanzler—R.	—
41 Moffat	Craig	H. H. Mobley—D.	Russell H. Coles—R.	W. O. Miner—D.	George Krieger—R.	N. Frank Nelson—R.	—
42 Montezuma	Cortez	John Leavitt—D.	Mrs. Lois Story Miller—D.	Charles R. Bowers—R.	Frank Weaver—R.	James F. Miller—D.	Mrs. Anna Patten—D.
43 Montrose	Montrose	Ira C. Foster—R.	Mrs. Ruth E. Gaines—R.	James L. Hamilton—R.	Arthur Sutton—R.	John C. Bass—R.	Mrs. Loretta Sanders
44 Morgan	Fort Morgan	Loyal C. Baker—R.	Edw. H. Madison—R.	Lewis E. Wilson—R.	Sam Pedersen—D.	A. W. Dulweber—D.	Mrs. Mary Terriere
45 Otero	La Junta	Edward S. Whitcomb—R.	Edward T. Oberling—R.	Emmett B. Clark—R.	George Freidenberger—R.	William L. Gobin—R.	Rachael Bridges—R.
46 Ouray	Ouray	Mrs. Eva K. Moule—R.	Thomas H. Cline—R.	Patricio Stealey—D.	Harry R. Scott—R.	E. D. Jelsma—D.	E. D. Jelsma—D.
47 Park	Fairplay	Mrs. Cherie Burgess—R.	Glen L. Swanson—R.	Walter R. Merritt—R.	S. H. Law—R.	Clarence S. Bullock—R.	Mrs. Violet W. Bullo
48 Phillips	Holyoke	Mrs. Cora E. Smith—R.	Miss Martha Hansen—R.	B. A. Stephenson—R.	Harry M. Clements—R.	Leon Kepler—R.	Leon Kepler—R.
49 Pitkin	Aspen	M. M. Neihardt—R.	Kenneth S. Watt—R.	Warren J. Conner—R.	Otto Johnson—D.	Wm. R. Shaw—R.	—
50 Prowers	Lamar	Max V. Speckmann—R.	I. S. Heath—R.	N. G. Jones—R.	John Hodson—R.	E. R. Jones—R.	Mrs. Huldah Hurley
51 Pueblo	Pueblo	A. G. Kochenberger—D.	J. E. Creel—D.	Marvin L. Starkweather—D.	Joe E. Tucker—D.	Hubert Glover—D.	Charles Ruth Park—D.
52 Rio Blanco	Meeker	Herbert H. Morlan—R.	C. L. Tagert—D.	H. E. Sexson—D.	Robert T. Fuiton—R.	C. C. Aldrich—R.	C. C. Aldrich—R.
53 Rio Grande	Del Norte	Ralph W. Roberts—R.	W. R. Laase—R.	F. E. Gibbs—D.	Allan Fennell—R.	Manlius T. Hancock—D.	L. A. Ruark
54 Routt	Steamboat Springs	Cecil Rorex—D.	T. W. Poulson—D.	John Petranovich—D.	William Macfarlane—R.	Eugene Steele—D.	—
55 Saguache	Saguache	Miss Edith L. Jones—R.	Sidney B. Hall—D.	Clifford Burnham—R.	Chas. McCormick—R.	W. J. Werner—R.	W. J. Werner
56 San Juan	Silverton	Mrs. Sylvia L. Nelson—R.	Mrs. Ida L. Grimes—R.	Arthur R. Walker—R.	Herman Zueck—D.	Charles Pearson—R.	Charles Pearson—R.
57 San Miguel	Telluride	Miss Sally A. Clark—D.	Donald A. O'Rourke—D.	Harold C. Ballard—D.	T. H. Mahoney—D.	Everett Vernon—D.	—
58 Sedgwick	Julesburg	Mrs. Florence Arndt—D.	W. R. Bennisson—R.	Glen B. McKinstry—R.	Glenn Goodard—R.	Denmer A. Wells—R.	Harriett Monson—R.
59 Summit	Breckenridge	Herman Dereum—R.	Frank F. Brown—R.	Ed. T. Stuard—D.	M. R. Loomis—D.	J. M. Armstrong—D.	J. M. Armstrong—D.
60 Teller	Cripple Creek	Mrs. Mamie Wells—D.	John W. Reifenrath—D.	Ed. T. Stuard—D.	Cecil A. Markley—D.	Vincent H. Ryan—D.	—
61 Washington	Akron	Mrs. Harold G. Simpson—R.	Harold L. Sisson—R.	Tom W. Rolofson—D.	Wesley McDonald—R.	James E. Kelly—D.	Mrs. Lucille Woodard
62 Weld	Greeley	Mrs. Ann Spomer—R.	Harold H. Seaman—R.	William J. Barry—R.	George A. Hill—R.	Donald A. Carpenter—R.	Ross I. Shackle—D.
63 Yuma	Wray	John Adcock—R.	Wm. T. Rosenkrans—R.	Homer M. Bruce—R.	Bruce O. Wilson—R.	Buffer Roberts—R.	Buffer Roberts—R.

OFFICERS OF COLORADO—1949-1950

COUNTY COURT	CLERK DISTRICT COURT	SURVEYOR	SUPT. OF SCHOOLS	CORONER	COUNTY COMMISSIONERS			
Adams Ward—R.	Carl Jacobson—R.	James C. Counter—D.	Bertha E. Heid—D.	Lyle G. Rice—R.	Wm. Eppinger—D.	E. G. Waymire—D.	Del J. Cimiyott—D.	1
Anderson—R.	Edith Hansen, R.	Norman White—D.	Mrs. Mabel O'Laughlin—D.	James R. Hurley—R.	Ray Wells—R.	Owen Baldwin—D.	Ellis B. Nash—D.	2
Bartlett—D.	O. C. Hoffman—R.	David L. Nicholl—R.	Mrs. Thelma S. Hastings—R.	Ivan J. Joss—R.	W. C. Giggall—R.	Leonard J. Grant—D.	Royce P. Robins—D.	3
Bartlett—D.	Philip R. Johnson—D.		Mrs. Rachel Tishner—R.		Dailey Hott—D.	J. T. Chambers—R.	Harmon T. Clark—D.	4
Bartlett—D.	Elmer E. Terry—R.		Lillian Collings—D.	Dr. G. A. Duffy—R.	Jess L. Suhler—R.	Ewell S. Benson—D.	Loyd Freeman—D.	5
Bartlett—D.	Wm. A. Bush—		Mrs. Hazel L. Martin—R.	Lester B. Powell—R.	S. A. Pryor—D.	Harry E. Blackburn—D.	Everett J. Roesch—R.	6
Bartlett—D.	C. W. Atkinson—	J. E. Byron—R.	O. L. Dever—R.	Geo. W. Howe—R.	A. W. Thurston—R.	Elmer Autrey—R.	W. D. McCaslin—D.	7
Bartlett—D.	Arthur E. Smith—	Joe M. Cuenin—R.	Mrs. Bessie M. Shewalter—D.	Joe E. Stewart—D.	Robert T. O'Haver—R.	Irl Taliaferro—D.	Ben Behrman—D.	8
Bartlett—D.	Miss Mattie Trimble—	D. H. Zuck—R.	Mrs. Cecile G. McClaskey—R.	A. H. Brentlinger—R.	Joseph R. Carrigan—R.	F. H. Hadley—R.	L. D. Ferguson—R.	9
Bartlett—D.	John W. Old—D.	Chas. L. Harrington—D.	Miss Dorothy Carlson—R.	Freeman D. Fowler—R.	Bert B. Wright—R.	Henry C. Nelson—R.	Roy McRee—D.	10
Bartlett—D.	Robert Valdez—R.	Jennings Thomas—R.	Robert Montano—D.	Arthur Gjellum—D.	Delfino E. Garcia—R.	W. Fred Haynie—D.	Juan I. Medina—R.	11
Bartlett—D.	Joseph F. Romero—R.	A. M. Weaver—	Mrs. Belinda S. Carpenter—R.	Dr. William C. Shontz—R.	Epifanio Gold—D.	Fred Espinoza—R.	Epifanio Lopez—D.	12
Bartlett—D.	Mrs. Letha P. Leach—	Carl Klein—R.	Mrs. Rubylee Guilliams—D.	Emil J. Jonach—R.	E. G. Clatworthy—R.	B. H. Sweckard—R.	Glen W. Smith—R.	13
Bartlett—D.	August N. Menzel—R.	Richard C. Colgate—R.	Miss Frances E. Kettle—R.	Chas. A. Menzel—R.	Dewey Austin—D.	Dwight E. Tibbetts—D.	D. C. MacKenzie—D.	14
Bartlett—D.	Mrs. Pearl H. Stewart—	Abner S. McKee—R.	Miss Martha Savage—D.	Quincy Lamar—D.	W. F. Blaine—R.	Charles Kiser—D.	Joe Barnie—D.	15
Bartlett—D.	J. E. Goodman—	Edward A. Smith—		Dr. Angelo Lapi—	Roy W. Cass—	Thomas Campbell—	A. A. Blakley—	16
Bartlett—D.	Dan B. Hunter—D.	Henry Curtis—R.	Miss M. Anna Engel—R.	C. M. Engel—R.	Louis M. Jones—R.	E. E. Ballenger—D.	Wade Redford—D.	17
Bartlett—D.	O. P. Weston—D.	William H. Lea—D.	Elizabeth E. Bean—R.	Douglas Andrews—D.	Roy Woodworth—R.	Frank Dalkan—R.	Donald D. Williams—D.	18
Bartlett—D.	Leo Fessenden—R.	Forrest L. Head—R.	Mrs. Mary C. Grant—R.	Paul Andre—R.	H. A. Nottingham—D.	Carl Forster—D.	LeRoy Borah—R.	19
Bartlett—D.	Harry F. Anderson—R.	Thomas J. Russell—R.	Mrs. Esther Carson—R.	Ralph B. Maul—R.	R. W. Lambert—R.	Charles L. Kimzey—D.	E. F. Ager—R.	20
Bartlett—D.	Mrs. Ruth M. Burns—	Otis W. Witcher—D.	Mrs. Lucy S. Perry—R.	Dr. Henry W. Maly—R.	Keith D. McBurney—R.	Fred H. Monk—R.	John M. Torrence—R.	21
Bartlett—D.	Jonathan Seaman—R.	Tom Walker—R.	Mrs. Adella M. Archer—D.	Chet Cook—R.	Norman J. Boyd—D.	J. Walter Martin—R.	Finis Parks—R.	22
Bartlett—D.	J. S. Woody—R.		Alma M. Harris—D.	J. I. Burdge—	Dewey Williams—R.	Wm. Dodds Scott—R.	K. A. Baillie—R.	23
Bartlett—D.	Frank A. Potter—R.		Mrs. Nora S. Scott—D.	Frank Daugherty—R.	Otto M. Blake—R.	Martin N. Nelson—R.	Arthur Crow—R.	24
Bartlett—D.	Charles W. Bloom—D.	E. D. Bloye—R.	Harriet C. Dolloff—R.	D. I. Cox—R.	James E. Quinn—D.	George E. Field—R.	Fay F. DeBerard—R.	25
Bartlett—D.	Mrs. Alma Miller—	L. G. Dale—R.	Mrs. Emma L. Hards—R.	Alex Campbell—D.	Anton Danni—D.	C. Murl Ellebrecht—D.	Ed Leonard—R.	26
Bartlett—D.	H. G. Heath—D.		Mrs. Carolyn Wright—R.	Arthur P. Griffiths—R.	H. L. Townsend—D.	Henry T. Hoffman—R.	Orville Dowzer—R.	27
Bartlett—D.	Charles Haines—	A. S. Willburn—D.	Miss Frances Nelson—D.	Gus Crump—D.	Sabino Archuleta—D.	Fred Scholes—D.	Clyde M. Johnson—D.	28
Bartlett—D.	Archie G. Maine—R.	Frank DeLynden—D.	Walter E. Brunner—R.	Dr. C. M. Morgan—R.	M. P. Cloonan—R.	L. B. Wamsley—D.	Ray C. Fox—D.	29
Bartlett—D.	Ben Burgess—R.	E. E. Duckworth—D.	Mrs. Mariam Martensen—R.	Arden Albers—D.	Emil Schneider—D.	Walter True—D.	George Green—R.	30
Bartlett—D.	C. E. Hamilton—	Roland Eder—D.	Miss Florence Morris—R.	Dr. R. G. Ward—R.	Wm. E. Rose—R.	P. L. Reed—R.	Raymond Tinsley—R.	31
Bartlett—D.	Mrs. Mabel Boger—		Mrs. Willa Zick—R.	W. R. Hendricks—R.	Reuben C. Anderson—R.	Earl Boren—D.	Ernest L. McArthur—R.	32
Bartlett—D.	Ross Pearson—R.		Miss Lucy E. Cramer—R.	Andrew Cassidy—D.	Francis D. Slavin—D.	Albert Zack—R.	Adolph Kuss, Sr.—D.	33
Bartlett—D.	Walter C. Allan—	A. L. Kroeger—R.	Violet Tipotsch—D.	R. L. Downing—R.	D. W. Sexton—R.	Emmet Hott—D.	Lloyd F. Benton—R.	34
Bartlett—D.	Kenneth A. Johnson—	James H. Andrews—R.	Frank L. Irwin—R.	Harold A. Warren—D.	Ernest Fischer—R.	Robert H. Watts—R.	A. Walter Lawson—R.	35
Bartlett—D.	Maupin Woodson—D.	Harry Hendrickson—D.	Harry Raye—D.	Ed Toupal—D.	John Kancilia, Jr.—D.	Claude Foster—R.	Joe La Crue—D.	36
Bartlett—D.	R. J. Barngrover—R.	Harold Lee—R.	Mrs. Irene Hamling—D.	James W. Buchanan—R.	C. L. Evans—R.	A. S. Covington, Sr.—D.	Joe Pelster—D.	37
Bartlett—D.	Mrs. Cordelia K. Davis—R.	J. E. Youngquist—R.	Mrs. Doris R. Plummer—D.	Robert M. Jackson—R.	Earl R. Bonham—R.	Oscar M. Marks—R.	Hugh E. Williams—R.	38
Bartlett—D.	Mrs. Lucy E. Hogan—D.	Roy L. George—D.	Mrs. Lucile H. Mahannah—D.	W. H. Snyder—D.	H. Grady Puett—D.	Oscar C. Mayne—D.	Walter A. Stout, Jr.—R.	39
Bartlett—D.	Wm. T. Jackson—R.	Paul B. Davis—	Mrs. Maude C. Lamb—R.	Fred Ryden—D.	Wm. H. Swinehart—R.	Erick W. Nelson—R.	Everett E. Corwin—R.	40
Bartlett—D.	Ralph L. White—D.	Fred D. Legler—D.	Henry E. Steele—D.	I. J. Robacker—D.	Claude J. Myers—R.	Cy Hansen—R.	Earl Wilson—D.	41
Bartlett—D.	Mrs. Anna Patten—D.	Dave C. Hickman—D.	Mrs. Lotta Manauagh—R.	J. W. Ertel—R.	Chas. T. Porter—I.	J. C. Rumburg—R.	Claude Everett—D.	42
Bartlett—D.	Clide N. McClean—R.	W. E. Hance—R.	Rosella Wallis—R.	Merrill Ormsbee—D.	Fred Sullivan—R.	Harland K. Duncan—R.	Clyde Porter—D.	43
Bartlett—D.	Hugh R. Smith—R.	N. M. MacNeill—D.	Miss Marian Lockwood—D.	Francis S. Jolliffe—R.	R. J. Lamborn—R.	J. R. Christensen—D.	Steve Christensen—R.	44
Bartlett—D.	Miss Leah M. Ryder—R.	Franklin Shafer—D.	Miss Ruth R. Lytle—R.	Ralph E. Peacock—R.	G. D. Steward—R.	R. P. Lewis—R.	W. A. Bauserman, Jr.—D.	45
Bartlett—D.	Mrs. Marg. L. MacLennan—R.	Gerald F. Galloway—R.	Ruth Massard—R.	Leo Flor—D.	Buel H. Adams—R.	Harry McClure—R.	Wm. McCullough—D.	46
Bartlett—D.	Clarence S. Bullock—R.	Walter O. Lutze—R.	Elizabeth Smith—R.	Dr. R. B. Patterson—R.	Louis Almgren—D.	E. B. Bell—D.	W. C. Lewis—R.	47
Bartlett—D.	George A. Barker—R.	Tom Walker—	Mrs. Earlean F. Jung—R.	Dr. J. Ralston—R.	Arthur Falk—R.	S. J. Meakins—D.	D. F. Sagehorn—R.	48
Bartlett—D.	Miss Louise M. Berg—R.	George H. Russell—R.	Mrs. Lettie Lee Brand—D.	Bernard P. Popish—D.	T. J. Sardy—D.	Clarence O. Quam—D.	Orest A. Gerbaz—D.	49
Bartlett—D.	Mrs. Marie Uhl—	Simon F. Elliot—D.	Mrs. Nan S. Creeghe—R.	Dr. C. T. Knukey—R.	Wm. N. Wilson—R.	W. H. Straney—R.	W. M. Turpin—R.	50
Bartlett—D.	Robert D. White—R.	John W. Wharton—R.	Stanley A. Leftwich—D.	Dr. C. N. Caldwell—D.	Pete Hughes—D.	John E. Hill—D.	John H. Reece—R.	51
Bartlett—D.	Antonio J. N. Valdez—R.	Ward Mathias—R.	Mrs. Josephine Holland—D.	Clyde B. Stephenson—R.	Hugh L. Caldwell—R.	William Murray—D.	K. W. Phillippi—D.	52
Bartlett—D.	M. M. Burch—	Stanley Dismuke—D.	Mrs. Ruth M. Mathias—R.	W. Edward Sharp—D.	R. S. Loser—D.	Geo. F. Millikin—D.	Vernon C. McCallister—R.	53
Bartlett—D.	Mrs. Fay Fennell—	W. L. Hammond—D.	Miss Vivien Maxwell—D.	Howard R. Root—R.	J. Frank Stetson—D.	William S. Green—D.	Claude A. Luekens—D.	54
Bartlett—D.	Joseph E. Dresback—D.	J. M. Cook—D.	Mrs. Lulu K. Bell—R.	Dr. John M. Coleman—R.	Geo. F. McClure—D.	H. K. Lockett—D.	Geo. H. Curtis—R.	55
Bartlett—D.	Mrs. Alice L. Erickson—D.		Mrs. Anna C. Bell—D.	Wm. E. Maguire—D.	John McClure—R.	C. W. Fleeming—R.	Louis Dalla—R.	56
Bartlett—D.	Mrs. Harriett Monson—R.		Miss Irene M. P. Wichmann—D.	Dr. G. G. Balderston—R.	John Ferguson, Jr.—D.	Wm. Finnegan—D.	George Mike Young—R.	57
Bartlett—D.	C. W. Burnheimer—R.	L. A. Chase—D.	Miss Veta Stalcup—R.	Dr. John C. Lundgren—R.	Emray A. Price—R.	Clarence L. Eversman—R.	W. J. Jenkins—D.	58
Bartlett—D.	Mrs. Martha Shafer—	A. B. Crosley—R.	Mrs. Lillias P. Stafford—R.	Lester C. Owens—R.	Lawrence W. Garvie—D.	Earl W. Rice—D.	Daniel Mogee—R.	59
Bartlett—D.	Mrs. Minnie Blauser—	E. E. Hickman—R.	Mrs. Loretta Surber Davis—D.	Dr. A. C. Denman—D.	W. B. Moore—D.	Lee Wild—D.	Harold Ellis—D.	60
Bartlett—D.	A. J. Luther—R.	T. B. Moody—R.	Delman Yackie—R.	Y. E. Wohlauer—R.	Oscar E. Higgason—R.	James E. Lee—D.	Tom Combs—D.	61
Bartlett—D.	Mrs. Esther Cassin Serafini—R.	Wm. B. Coston—D.	Paul N. Lodwick—R.	John W. Allnut—R.	Carl J. Magnuson—R.	A. Wm. Hanson—R.	Geo. L. Andersen—R.	62
Bartlett—D.			Mrs. May Glaser—R.	Paul Morris—R.	Geo. E. Huey—D.	Arthur Quiggle—D.	Geo. W. Wingfield—D.	63

