

STATE OF COLORADO

Abstract of Votes Cast

AT THE

Primary Election

Held on the Twelfth Day of September,
A. D. 1916

AND AT THE

General Election

Held on the Seventh Day of November,
A. D. 1916

FOR

Presidential Electors, Congressmen, and State,
Legislative and District Officers

ALSO THE

Proposed Constitutional Amendments
Initiated and Referred Bills

COMPILED FROM OFFICIAL RETURNS

BY

JAMES R. NOLAND
Secretary of State

1916



DENVER, COLORADO
THE C. F. HOECKEL BLANK BOOK AND LITHOGRAPHING CO.
1916

FOR SUPERINTENDENT OF PUBLIC INSTRUCTION

COUNTIES	Mary E. Hotz Blakeley (Soc.)	Mary C. C. Bradford (Dem.)	Helen M. Wixson (Rep.-Proh.)
Adams	158	1,720	1,117
Alamosa	84	979	545
Arapahoe	187	2,067	1,614
Archuleta	34	626	440
Baca	270	923	850
Bent	65	1,112	953
Boulder	888	5,886	4,427
Chaffee	128	1,996	967
Cheyenne	96	610	624
Clear Creek	61	1,037	496
Conejos	24	941	874
Costilla	41	913	630
Crowley	78	916	908
Custer	49	470	335
Delta	380	1,988	1,941
Denver	3,350	36,865	22,541
Dolores	49	209	42
Douglas	33	661	583
Eagle	74	904	465
Elbert	122	959	952
El Paso	829	6,503	7,535
Fremont	337	2,645	2,287
Garfield	209	2,028	1,248
Gilpin	39	563	377
Gunnison	170	1,349	731
Grand	24	525	427
Hinsdale	29	146	99
Huerfano	42	2,357	2,123
Jackson	8	256	178
Jefferson	222	2,709	2,077

FOR SUPERINTENDENT OF PUBLIC INSTRUCTION—Continued

COUNTIES	Mary E. Hotz Blakeley (Soc.)	Mary C. C. Bradford (Dem.)	Helen M. Wixson (Rep.-Proh.)
Kiowa	126	755	761
Kit Carson	193	1,112	1,185
Lake	285	1,981	1,118
La Plata	218	2,099	1,121
Larimer	494	3,577	3,279
Las Animas	254	4,081	3,187
Lincoln	142	1,259	1,311
Logan	179	2,059	1,652
Mesa	769	3,118	2,776
Mineral	47	240	131
Moffat	42	677	484
Montezuma	95	1,191	523
Montrose	353	1,883	1,533
Morgan	170	1,739	1,781
Otero	228	3,254	2,871
Ouray	92	775	444
Park	36	522	399
Phillips	97	536	616
Pitkin	122	772	273
Prowers	266	1,732	1,655
Pueblo	1,188	8,958	6,053
Rio Blanco	24	613	448
Rio Grande	69	1,303	1,044
Routt	158	1,580	937
Saguache	63	944	699
San Juan	100	530	241
San Miguel	91	1,064	674
Sedgwick	69	409	516
Summit	44	597	285
Teller	381	2,857	1,896

FOR SUPERINTENDENT OF PUBLIC INSTRUCTION—Continued

COUNTIES	Mary E. Hotz Blakeley (Soc.)	Mary C. C. Bradford (Dem.)	Helen M. Wixson (Rep.-Proh.)
Washington	167	1,291	1,053
Weld	523	6,744	6,283
Yuma	279	1,719	1,695
Total	15,444	142,834	107,310

Scattering, 1 Candidate. Total, 1 Vote.

Bradford over Wixson, 35,524.



FOR REGENTS OF THE UNIVERSITY OF COLORADO

COUNTIES	Thomas T. Barnard (Dem.)	William J. King (Rep.)	Grace B. Marians (Soc.)	Edwin A. Miller (Prog.)	Clifford W. Mills (Dem.)	Anna Wolcott Valle (Rep.)	Love Westfall (Soc.)
Adams	1,301	1,131	152	43	1,235	1,174	145
Alamosa	855	591	103	16	781	537	83
Arapahoe	1,687	1,635	204	52	1,625	1,723	176
Archuleta	522	456	32	8	521	434	27
Baca	825	808	253	11	731	729	210
Bent	985	960	66	27	848	895	57
Boulder	4,911	4,791	710	174	4,670	4,667	706
Chaffee	1,716	1,065	150	25	1,585	996	133
Cheyenne	516	589	103	24	474	545	90
Clear Creek	900	509	62	17	786	536	74
Conejos	776	900	25	19	659	828	17
Costilla	869	617	38	12	839	601	40
Crowley	901	871	79	12	830	833	66
Custer	424	343	41	5	391	328	34
Delta	1,727	1,819	390	64	1,630	1,693	359
Denver	27,748	23,588	3,189	1,034	29,740	28,875	3,009

ABSTRACT OF VOTES CAST AT

GENERAL ELECTION, TUESDAY, NOV. 7, 1916.

155

Dolores	171	41	45	1	173	47	43
Douglas	563	596	27	11	514	593	22
Eagle	725	505	76	12	667	474	70
Elbert	817	944	110	25	729	908	98
El Paso	6,058	7,240	851	329	5,520	7,209	750
Fremont	2,357	2,367	334	57	2,107	2,274	314
Garfield	1,661	1,250	215	23	1,565	1,211	199
Gilpin	474	411	34	12	409	399	33
Grand	439	386	32	10	409	372	23
Gunnison	1,134	737	154	19	1,124	734	156
Hinsdale	134	96	31	1	140	97	26
Huerfano	2,278	2,120	45	23	2,187	2,082	38
Jackson	214	179	7	9	195	165	6
Jefferson	2,164	2,202	187	54	2,006	2,209	190
Kiowa	692	690	120	21	601	677	112
Kit Carson	992	1,107	147	35	876	1,028	137
Lake	1,782	1,286	264	31	1,664	1,252	262
La Plata	1,959	1,022	204	30	1,786	1,025	184
Larimer	2,870	3,140	503	164	2,814	3,102	442
Las Animas	3,648	3,497	321	277	3,211	3,413	213
Lincoln	1,084	1,261	129	38	1,022	1,190	121
Logan	1,718	1,700	173	45	1,593	1,545	148
Mesa	2,731	2,454	708	127	2,571	2,345	720
Mineral	204	158	45	6	185	142	43

FOR REGENTS OF THE UNIVERSITY OF COLORADO—Continued

COUNTIES	Thomas T. Barnard (Dem.)	William J. King (Rep.)	Grace B. Marians (Soc.)	Edwin A. Miller (Prog.)	Clifford W. Mills (Dem.)	Anna Wolcott Valle (Rep.)	Love Westfall (Soc.)
Moffat	560	525	47	8	511	510	41
Montezuma	1,082	476	82	19	979	455	77
Montrose	1,824	1,475	323	47	1,666	1,397	301
Morgan	1,452	1,678	157	39	1,298	1,684	133
Otero	3,087	2,738	215	67	2,818	2,575	185
Ouray	674	448	80	14	639	429	81
Park	442	406	41	15	416	389	29
Phillips	463	566	80	16	432	528	75
Pitkin	615	287	119	8	585	303	120
Prowers	1,468	1,669	252	62	1,296	1,496	219
Pueblo	7,824	6,117	1,222	254	7,842	6,326	1,334
Rio Blanco	533	449	26	8	495	416	19
Rio Grande	1,132	1,026	68	17	990	1,002	53
Routt	1,331	1,011	154	25	1,217	979	144
Saguache	801	841	61	24	699	696	51
San Juan	466	242	95	12	446	252	90

ABSTRACT OF VOTES CAST AT

San Miguel	903	686	89	9	901	662	84
Sedgwick	324	508	71	14	301	484	58
Summit	545	288	41	9	517	267	41
Teller	2,945	1,844	359	72	2,270	1,787	336
Washington	1,032	1,057	144	30	901	962	120
Weld	5,874	6,042	471	248	5,299	6,000	467
Yuma	1,474	1,549	269	33	1,359	1,470	249
	<hr/>	<hr/>	<hr/>	<hr/>	<hr/>	<hr/>	<hr/>
	120,383	107,990	14,825	3,953	115,290	110,956	13,883
Scattering, 1 Candidate. Total, 1 Vote.							
Barnard over Vaile							9,427
Mills over Valle							4,334

ABSTRACT OF VOTES CAST AT

**FOR DISTRICT JUDGE SECOND JUDICIAL DISTRICT
(To Fill Vacancy)**

Alden C. Galland, Socialist	2,550
Orrin N. Hilton, Independent-Liberal-Progressive	14,549
John I. Mullins, Democrat	23,231
Greeley W. Whitford, Republican	21,443

Mullins over Whitford, 1,788.

**FOR DISTRICT JUDGE THIRD JUDICIAL DISTRICT
(To Fill Vacancy)**

COUNTIES	Granby Hillyer (Rep.)	A. C. McChesney (Dem.)
Baca	1,081	894
Bent	1,183	1,039
Huerfano	2,155	2,375
Las Animas	3,052	4,745
Prowers	2,098	1,663
	<hr/>	<hr/>
	9,569	10,716

Scattering, 1 Candidate. Total, 1 Vote.

McChesney over Hillyer, 1,147.

FOR DISTRICT JUDGE ELEVENTH JUDICIAL DISTRICT
(To Fill Vacancy)

COUNTIES	James L. Cooper (Rep.)	George H. Wilkes (Dem.)
Chaffee	1,513	1,566
Custer	459	444
Fremont	3,591	1,786
Park	526	448
	6,089	4,244

Cooper over Wilkes, 1,845.

ABSTRACT OF VOTES CAST AT

FOR DISTRICT ATTORNEY FIRST JUDICIAL DISTRICT

COUNTIES	Flor Ashbaugh (Rep.)	Samuel W. Johnson (Dem.)
Adams	1,166	1,674
Arapahoe	2,385	1,714
Clear Creek	687	927
Gilpin	628	478
Grand	429	458
Jefferson	2,208	2,794
	<hr/>	<hr/>
	7,503	8,045

Johnson over Ashbaugh, 542.

FOR DISTRICT ATTORNEY SECOND JUDICIAL DISTRICT

Horace G. Benson, Peoples-Independent	7,743
Arthur R. Brandt, Socialist	2,298
William E. Foley, Democrat	23,796
John W. Gillespie, Republican	19,388
Barney Haughey, Liberal	165
John Hipp, Independent-Citizen	9,361

Foley over Gillespie, 4,408.

FOR DISTRICT ATTORNEY THIRD JUDICIAL DISTRICT

COUNTIES	Joseph W. Hawley (Rep.)	Allen M. Lambricht (Dem.)
Baca	948	976
Bent	1,000	1,203
Huerfano	2,209	2,362
Las Animas	4,127	3,588
Prowers	1,941	1,688
	<hr/>	<hr/>
	10,225	9,817

Hawley over Lambricht, 408.

FOR DISTRICT ATTORNEY FOURTH JUDICIAL DISTRICT

COUNTIES	Michael W. Purcell (Dem.)	Willis L. Strachan (Rep.-Prog.)
Cheyenne	698	576
Douglas	697	580
Elbert	896	1,202
El Paso	4,810	10,245
Kit Carson	1,102	1,276
Lincoln	1,195	1,427
Teller	1,837	3,067
	<hr/>	<hr/>
	11,235	18,373

Strachan over Purcell, 7,138

ABSTRACT OF VOTES CAST AT

FOR DISTRICT ATTORNEY FIFTH JUDICIAL DISTRICT

COUNTIES	Michael F. Ryan (Rep.)	Barney L. Whatley (Dem.)
Eagle	640	840
Lake	1,793	1,827
Summit	503	473
	<hr/>	<hr/>
	2,936	3,140

Whatley over Ryan, 204.

FOR DISTRICT ATTORNEY SIXTH JUDICIAL DISTRICT

COUNTIES	Alonzo M. Emigh (Rep.)	George W. Lane (Dem.)
Archuleta	631	484
Dolores	82	195
La Plata	1,566	2,066
Montezuma	650	1,173
San Juan	333	546
	<hr/>	<hr/>
	3,262	4,464

Lane over Emigh, 1,202.

FOR DISTRICT ATTORNEY SEVENTH JUDICIAL DISTRICT

COUNTIES	John L. Stivers (Rep.)	William Weiser (Dem.)
Delta	1,906	2,092
Gunnison	775	1,422
Hinsdale	100	163
Mesa	2,008	4,519
Montrose	1,766	2,099
Ouray	467	796
San Miguel	708	1,096
	<hr/>	<hr/>
	7,730	12,187

Weiser over Stivers, 4,457

FOR DISTRICT ATTORNEY EIGHTH JUDICIAL DISTRICT

COUNTIES	Geo. W. Charette (Soc.)	Albert Dakan (Prog.)	Russell W. Fleming (Dem.)	Victor E. Keyes (Rep.)
Boulder	636	272	6,114	4,122
Jackson	10	2	240	164
Larimer	497	80	4,126	2,770
Weld	407	160	5,989	6,870
	<hr/>	<hr/>	<hr/>	<hr/>
	1,550	514	16,469	12,926

Fleming over Keyes, 3,543.

ABSTRACT OF VOTES CAST AT

FOR DISTRICT ATTORNEY NINTH JUDICIAL DISTRICT

COUNTIES	Frank Delaney (Dem.)	John L. Noonan (Rep.)
Garfield	1,944	1,567
Moffat	744	471
Pitkin	715	411
Rio Blanco	864	282
Routt	1,524	1,121
	<hr/>	<hr/>
	5,791	3,852

Delaney over Noonan, 1,939.

FOR DISTRICT ATTORNEY TENTH JUDICIAL DISTRICT

COUNTIES	Charles B. Hughes (Dem.)	Charles M. Rose (Rep.)
Crowley	1,027	947
Kiowa	817	811
Otero	3,332	2,720
Pueblo	9,741	6,584
	<hr/>	<hr/>
	14,917	11,062

Scattering, 1 Candidate. Total, 9 Votes.

Hughes over Rose, 3,855.

FOR DISTRICT ATTORNEY ELEVENTH JUDICIAL DISTRICT

COUNTIES	Gilbert A. Walker (Rep.)	T. Lee Witcher (Dem.)
Chaffee	1,228	1,955
Custer	370	549
Fremont	2,370	2,907
Park	441	545
	4,409	5,956

Witcher over Walker, 1,547.

FOR DISTRICT ATTORNEY TWELFTH JUDICIAL DISTRICT

COUNTIES	John I. Palmer (Rep.)	James P. Veerkamp (Dem.)
Alamosa	959	705
Conejos	1,301	835
Costilla	671	865
Mineral	203	220
Rio Grande	946	1,415
Saguache	774	791
	4,854	4,831

Scattering, 1 Candidate. Total, 1 Vote.

Palmer over Veerkamp, 23.

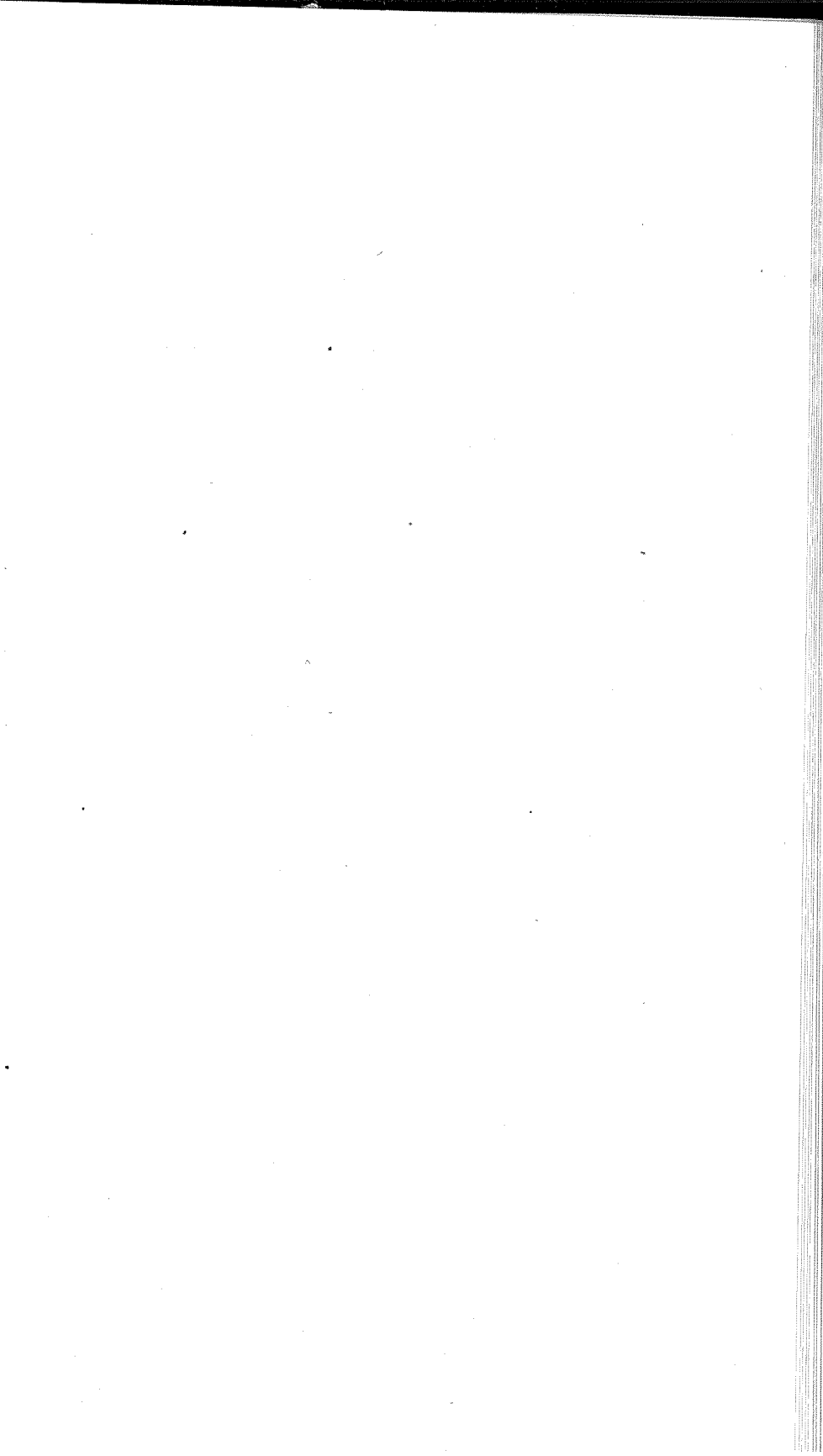
ABSTRACT OF VOTES CAST AT

FOR DISTRICT ATTORNEY THIRTEENTH JUDICIAL DISTRICT

COUNTIES	Irving Van Bradt (Dem.)	Robert M. Work (Rep.)
Logan	1,629	2,235
Morgan	1,670	2,085
Phillips	569	709
Sedgwick	387	615
Washington	1,129	1,203
Yuma	1,688	1,943
	<hr/>	<hr/>
	7,072	8,790

Scattering, 2 Candidates. Total, 5 Votes.

Work over Van Bradt, 1,718.



**FOR
PROPOSED CONSTITUTIONAL AMENDMENTS, INITIATED AND
REFERRED MEASURES**

**1. HOUSE BILL NO. 178, AN ACT RELATING TO THE PRACTICE OF
MEDICINE IN THE STATE OF COLORADO**

COUNTIES	Yes	No
Adams	980	934
Alamosa	583	403
Arapahoe	1,305	1,294
Archuleta	350	265
Baca	598	481
Bent	633	717
Boulder	5,274	2,679
Chaffee	320	1,414
Cheyenne	514	408
Clear Creek	492	524
Conejos	228	895
Costilla	273	205
Crowley	901	300
Custer	238	197
Delta	1,288	1,563
Denver	25,358	23,615
Dolores	102	72
Douglas	391	450
Eagle	429	403
Elbert	572	534
El Paso	7,237	3,838
Fremont	2,399	1,525
Garfield	911	1,202
Gilpin	215	343
Grand	291	244
Gunnison	740	759
Hinsdale	53	107
Huerfano	1,321	861
Jackson	130	134
Jefferson	1,621	1,850
Kiowa	571	402
Kit Carson	775	733
Lake	911	1,006
La Plata	860	1,706
Larimer	3,003	2,254
Las Animas	2,597	1,438

FOR
PROPOSED CONSTITUTIONAL AMENDMENTS, INITIATED AND
REFERRED MEASURES—Continued

1. HOUSE BILL NO. 178, AN ACT RELATING TO THE PRACTICE OF
MEDICINE IN THE STATE OF COLORADO—Continued

COUNTIES	Yes	No
Lincoln	929	540
Logan	1,652	758
Mesa	2,423	1,936
Mineral	133	138
Moffat	429	347
Montezuma	423	629
Montrose	1,256	1,180
Morgan	1,524	872
Otero	2,504	1,853
Ouray	320	477
Park	362	230
Phillips	310	318
Pitkin	359	311
Prowers	1,351	832
Pueblo	4,703	6,940
Rio Blanco	330	320
Rio Grande	674	728
Routt	875	694
Saguache	499	531
San Juan	214	274
San Miguel	457	578
Sedgwick	306	122
Summit	217	346
Teller	2,205	1,405
Washington	970	461
Weld	5,235	2,748
Yuma	1,255	994
	96,879	82,317

Majority for, 14,562.

ABSTRACT OF VOTES CAST AT

FOR
PROPOSED CONSTITUTIONAL AMENDMENTS, INITIATED AND
REFERRED MEASURES—Continued

2. FOR A CONSTITUTIONAL AMENDMENT TO APPLY THE MERIT
SYSTEM TO APPOINTMENTS IN THE CIVIL SERVICE OF
THE STATE OF COLORADO

COUNTIES	Yes	No
Adams	833	784
Alamosa	440	389
Arapahoe	1,059	1,202
Archuleta	216	264
Baca	551	410
Bent	567	693
Boulder	2,538	3,858
Chaffee	640	1,463
Cheyenne	478	265
Clear Creek	326	591
Conejos	225	884
Costilla	261	181
Crowley	610	420
Custer	168	209
Delta	952	1,641
Denver	14,059	31,445
Dolores	92	40
Douglas	246	561
Eagle	326	350
Elbert	495	562
El Paso	2,945	6,857
Fremont	1,057	2,201
Garfield	759	1,172
Gilpin	208	264
Grand	271	213
Gunnison	443	868
Hinsdale	39	127
Huerfano	670	982
Jackson	105	129
Jefferson	1,165	1,688
Kiowa	567	364
Kit Carson	751	592
Lake	699	1,080
La Plata	762	1,225
Larimer	1,544	2,974

**FOR
PROPOSED CONSTITUTIONAL AMENDMENTS, INITIATED AND
REFERRED MEASURES—Continued**

**2. FOR A CONSTITUTIONAL AMENDMENT TO APPLY THE MERIT
SYSTEM TO APPOINTMENTS IN THE CIVIL SERVICE OF
THE STATE OF COLORADO—Continued**

COUNTIES	Yes	No
Las Animas	1,558	2,394
Lincoln	923	479
Logan	1,345	646
Mesa	1,845	1,675
Mineral	92	160
Moffat	349	368
Montezuma	553	382
Montrose	905	1,250
Morgan	1,161	856
Otero	1,672	1,818
Ouray	289	387
Park	205	273
Phillips	294	247
Pitkin	309	356
Prowers	1,113	911
Pueblo	2,793	8,105
Rio Blanco	249	306
Rio Grande	615	586
Routt	710	728
Saguache	293	595
San Juan	241	205
San Miguel	413	605
Sedgwick	252	114
Summit	196	302
Teller	1,496	1,660
Washington	833	196
Weld	3,687	3,152
Yuma	1,000	857
	62,458	96,561

Majority against, 34,103.

**FOR
PROPOSED CONSTITUTIONAL AMENDMENTS, INITIATED AND
REFERRED MEASURES—Continued**

3. MANUFACTURE AND SALE OF BEER

COUNTIES	Yes	No
Adams	1,095	1,600
Alamosa	329	1,001
Arapahoe	1,061	2,300
Archuleta	238	573
Baca	470	1,356
Bent	332	1,761
Boulder	2,828	7,069
Chaffee	831	2,099
Cheyenne	311	971
Clear Creek	558	927
Conejos	264	1,402
Costilla	341	562
Crowley	403	1,303
Custer	334	435
Delta	697	3,280
Denver	23,112	34,195
Dolores	102	136
Douglas	390	782
Eagle	438	781
Elbert	592	1,159
El Paso	3,334	10,551
Fremont	1,331	3,799
Garfield	854	2,261
Gilpin	433	495
Grand	340	374
Gunnison	753	1,265
Hinsdale	66	157
Huerfano	1,331	1,958
Jackson	115	261
Jefferson	1,802	2,881
Kiowa	356	1,099
Kit Carson	587	1,585
Lake	1,680	1,492
La Plata	685	2,265
Larimer	1,316	5,435
Las Animas	3,327	3,105

**FOR
PROPOSED CONSTITUTIONAL AMENDMENTS, INITIATED AND
REFERRED MEASURES—Continued**

3. MANUFACTURE AND SALE OF BEER—Continued

COUNTIES	Yes	No
Lincoln	632	1,783
Logan	867	2,766
Mesa	1,447	4,951
Mineral	106	249
Moffat	247	865
Montezuma	280	1,292
Montrose	768	2,725
Morgan	885	2,558
Otero	1,335	4,776
Ouray	286	828
Park	349	440
Phillips	292	862
Pitkin	406	624
Prowers	690	2,819
Pueblo	5,949	9,777
Rio Blanco	316	606
Rio Grande	442	1,742
Routt	766	1,703
Saguache	310	1,080
San Juan	322	406
San Miguel	555	955
Sedgwick	261	649
Summit	284	477
Teller	1,844	2,772
Washington	721	1,452
Weld	2,951	8,779
Yuma	998	2,523
	77,345	163,134

Majority against, 85,789.

**FOR
PROPOSED CONSTITUTIONAL AMENDMENTS, INITIATED AND
REFERRED MEASURES—Continued**

**4. FOR AN ACT PROVIDING HUMANE CARE AND TREATMENT FOR
ALL THE INSANE**

COUNTIES	Yes	No
Adams	2,088	281
Alamosa	860	207
Arapahoe	2,753	279
Archuleta	496	196
Baca	1,209	280
Bent	1,281	499
Boulder	5,823	2,274
Chaffee	1,777	795
Cheyenne	971	114
Clear Creek	1,013	172
Conejos	564	920
Costilla	475	125
Crowley	1,224	171
Custer	446	117
Delta	2,414	994
Denver	48,367	4,622
Dolores	191	13
Douglas	751	308
Eagle	865	161
Elbert	1,232	254
El Paso	7,936	3,767
Fremont	2,430	1,600
Garfield	1,887	662
Gilpin	608	80
Grand	548	95
Gunnison	1,141	553
Hinsdale	148	51
Huerfano	1,438	692
Jackson	305	50
Jefferson	3,461	507
Kiowa	1,103	173
Kit Carson	1,485	333
Lake	1,915	425
La Plata	1,907	726
Larimer	3,954	1,845
Las Animas	3,645	998

**FOR
PROPOSED CONSTITUTIONAL AMENDMENTS, INITIATED AND
REFERRED MEASURES—Continued**

**4. FOR AN ACT PROVIDING HUMANE CARE AND TREATMENT FOR
ALL THE INSANE—Continued**

COUNTIES	Yes	No
Lincoln	1,741	158
Logan	2,728	209
Mesa	4,652	687
Mineral	270	53
Moffat	703	241
Montezuma	1,186	183
Montrose	2,210	790
Morgan	2,604	284
Otero	3,855	1,015
Ouray	757	210
Park	545	127
Phillips	739	123
Pitkin	817	75
Prowers	2,388	450
Pueblo	6,975	5,251
Rio Blanco	609	198
Rio Grande	1,575	229
Routt	1,608	418
Saguache	768	425
San Juan	333	71
San Miguel	1,017	286
Sedgwick	579	48
Summit	520	199
Teller	3,722	405
Washington	1,662	157
Weld	8,639	1,356
Yuma	2,307	428
	164,220	39,415

Majority for, 124,805