

STATE OF COLORADO

Abstract of Votes Cast

AT THE

Primary Election

Held on the Twelfth Day of September,
A. D. 1916

AND AT THE

General Election

Held on the Seventh Day of November,
A. D. 1916

FOR

Presidential Electors, Congressmen, and State,
Legislative and District Officers

ALSO THE

Proposed Constitutional Amendments
Initiated and Referred Bills

COMPILED FROM OFFICIAL RETURNS

BY

JAMES R. NOLAND
Secretary of State

1916



DENVER, COLORADO
THE C. F. HOECKEL BLANK BOOK AND LITHOGRAPHING CO.
1916

FOR AUDITOR OF STATE—Continued

COUNTIES	Henry C. Ehrman (Lib.)	Charles H. Leckenby (Dem.)	J. H. Mayfield (Soc.)	G. F. Stevens (Proh-Prog.)	Olie Thorson (Rep.)
Kiowa	2	719	123	92	709
Kit Carson	11	1,038	179	155	1,057
Lake	8	1,842	255	127	1,367
La Plata	22	2,167	199	125	953
Larimer	26	3,266	553	452	3,130
Las Animas	44	3,816	234	345	3,289
Lincoln	12	1,192	134	180	1,146
Logan	12	1,924	177	260	1,542
Mesa	16	2,984	745	583	2,389
Mineral	1	243	49	13	124
Moffat	6	625	38	38	509
Montezuma	2	1,265	89	79	383
Montrose	13	1,964	311	216	1,383
Morgan	10	1,592	156	205	1,695
Otero	14	3,241	220	319	2,578
Ouray	5	756	91	63	413
Park	0	501	36	38	308
Phillips	5	505	88	75	574
Pitkin	4	744	118	23	294
Prowers	17	1,584	257	299	1,500
Pueblo	55	8,823	1,225	728	5,624
Rio Blanco	2	593	18	41	433
Rio Grande	10	1,252	58	121	951
Routt	10	1,901	136	74	658
Saguache	14	932	59	64	659
San Juan	6	500	80	26	279
San Miguel	5	1,014	84	59	629
Sedgwick	4	368	71	65	490
Summit	5	588	54	47	256
Teller	16	2,748	380	217	1,794

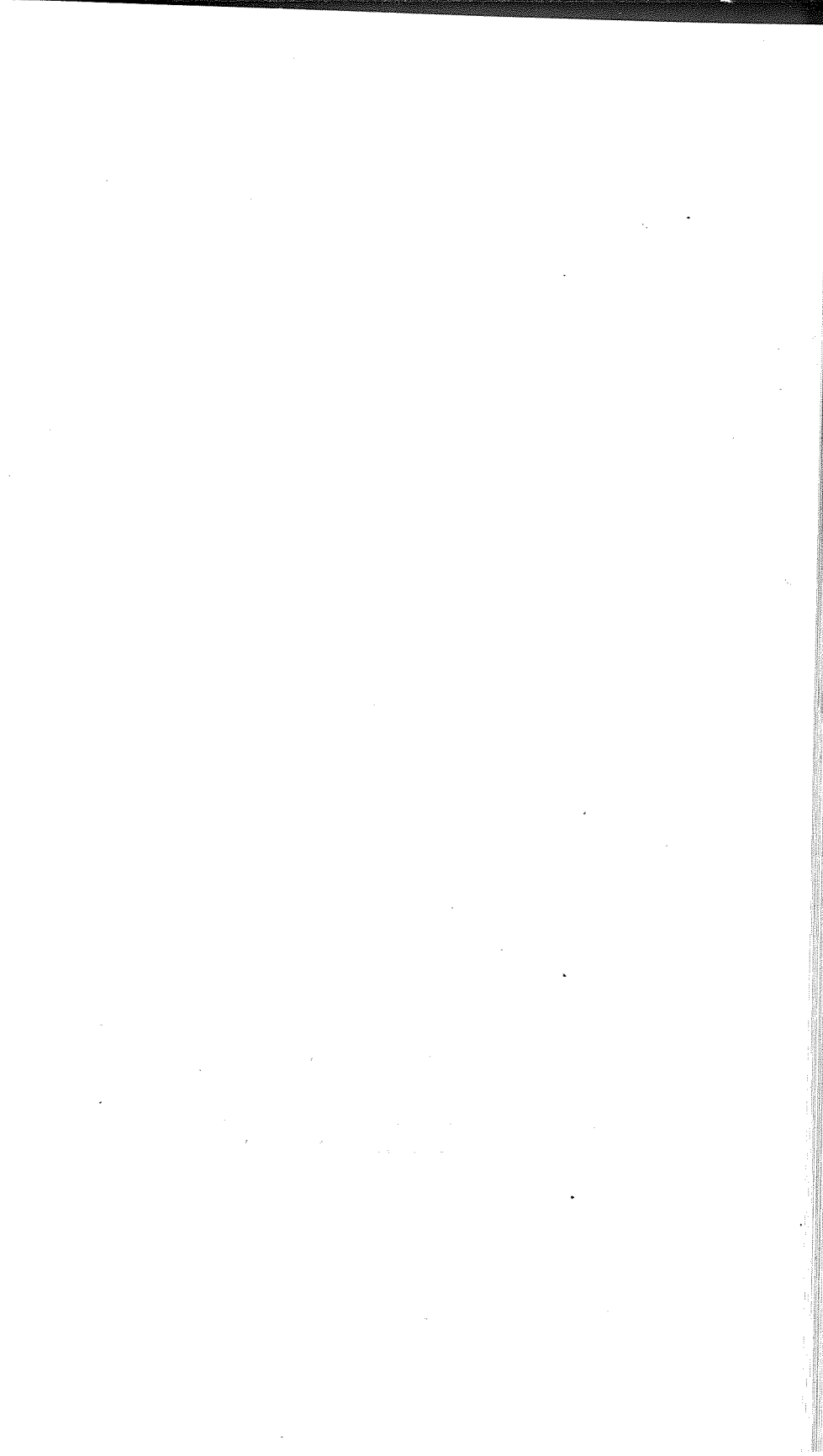
ABSTRACT OF VOTES CAST AT

FOR AUDITOR OF STATE—Continued

COUNTIES	Henry C. Ehrman (Lib.)	Charles H. Leckenby (Dem.)	J. H. Mayfield (Soc.)	G. F. Stevens (Profr-Prog.)	Olie Thorson (Rep.)
Washington	22	1,185	147	168	977
Weld	98	6,173	470	1,160	5,808
Yuma	14	1,655	298	229	1,484
Total	1,510	133,962	14,585	14,616	101,099

Scattering, 1 Candidate. Total, 1 Vote.

Leckenby over Thorson, 32,863.



ABSTRACT OF VOTES CAST AT

FOR STATE TREASURER

COUNTIES	Cyrillus B. Ayres (Lib.)	Robert H. Higgins (Dem.)	Harry E. Mulnix (Rep.)	Alfred Pomeroy (Soc.)
Adams	19	1,535	1,273	147
Alamosa	2	872	659	86
Arapahoe	13	1,844	1,866	187
Archuleta	10	583	460	29
Baca	5	927	822	272
Bent	6	1,063	1,007	64
Boulder	32	5,256	4,876	738
Chaffee	13	1,823	1,152	133
Cheyenne	7	584	630	91
Clear Creek	2	964	580	56
Conejos	17	823	994	23
Costilla	7	952	631	37
Crowley	8	956	911	73
Custer	463	350	43
Delta	10	1,901	1,994	399
Denver	571	26,650	32,279	3,166
Dolores	2	189	57	46
Douglas	4	583	694	28
Eagle	7	735	618	80
Elbert	6	908	1,023	114
El Paso	42	6,135	7,869	822
Fremont	12	2,425	2,682	330
Garfield	13	1,793	1,472	211
Gilpin	4	484	474	33
Grand	2	457	461	23
Gunnison	6	1,265	832	154
Hinsdale	143	111	28
Huerfano	14	2,430	2,201	33
Jackson	1	222	186	8
Jefferson	15	2,363	2,461	192

FOR STATE TREASURER—Continued

COUNTIES	Cyrillus B. Ayres (Lib.)	Robert H. Higgins (Dem.)	Harry E. Mulnix (Rep.)	Alfred Pomeroy (Soc.)
Kiowa	3	741	783	125
Kit Carson	11	1,053	1,028	174
Lake	13	1,587	1,642	345
La Plata	30	2,068	1,105	216
Larimer	25	3,177	3,682	514
Las Animas	37	3,630	3,958	208
Lincoln	9	1,203	1,342	128
Logan	19	1,912	1,753	191
Mesa	32	2,999	2,920	774
Mineral	218	160	47
Moffat	2	584	559	40
Montezuma	3	1,139	542	95
Montrose	12	1,998	1,549	321
Morgan	11	1,591	1,910	156
Otero	22	3,266	2,880	214
Ouray	6	715	509	91
Park	491	435	36
Phillips	7	526	622	88
Pitkin	5	646	409	121
Prowers	12	1,677	1,718	254
Pueblo	31	9,269	6,266	1,060
Rio Blanco	2	572	490	16
Rio Grande	14	1,203	1,096	62
Routt	12	1,440	1,068	158
Saguache	6	898	754	56
San Juan	4	466	337	78
San Miguel	2	963	771	89
Sedgwick	4	391	528	71
Summit	1	588	299	44
Teller	11	2,607	2,166	354

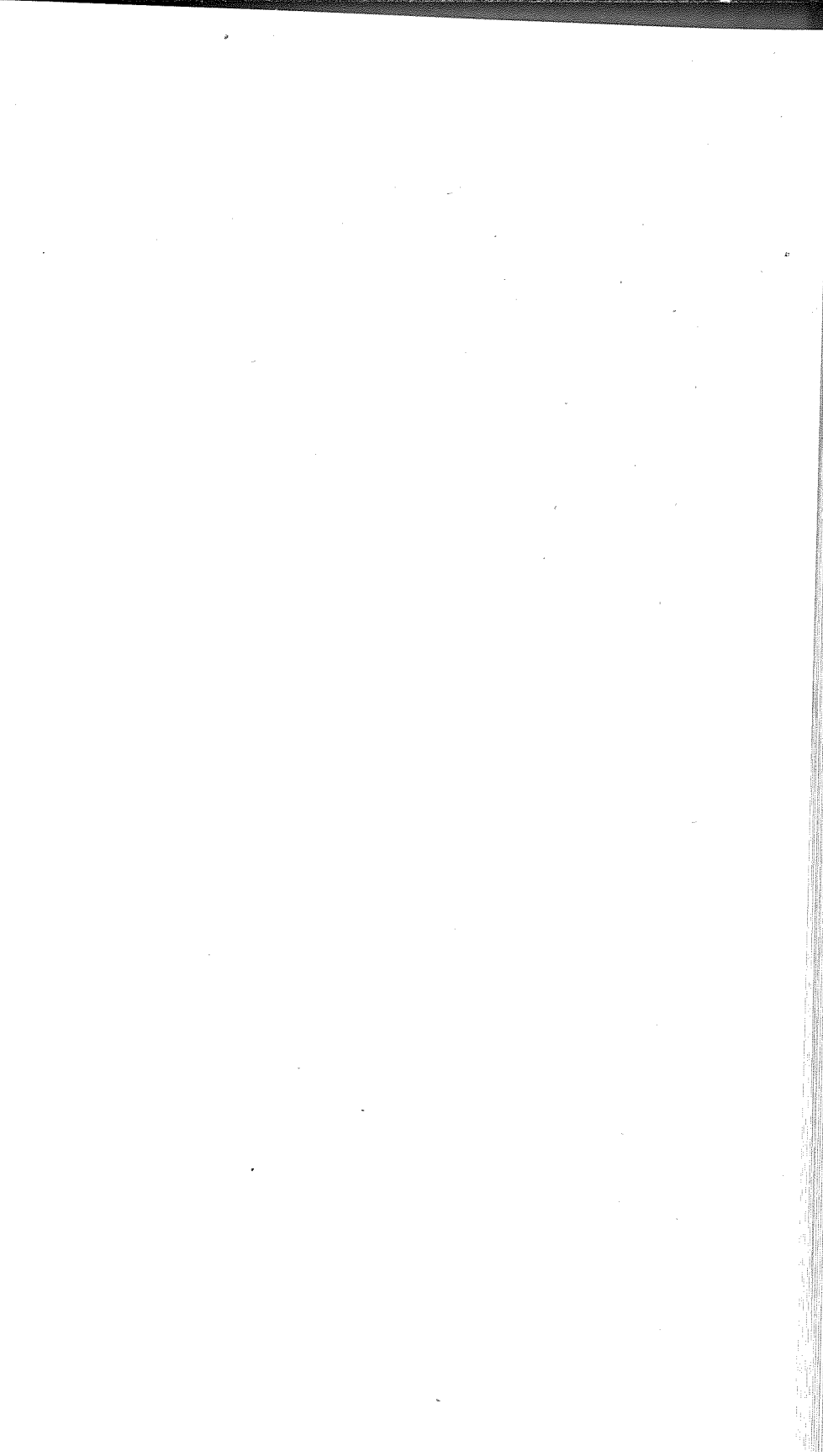
ABSTRACT OF VOTES CAST AT

FOR STATE TREASURER—Continued

COUNTIES	Cyrillus B. Ayres (Lib.)	Robert H. Higgins (Dem.)	Harry E. Mulnix (Rep.)	Alfred Pomeroy (Soc.)
Washington	19	1,160	1,204	147
Weld	43	6,219	6,553	463
Yuma	12	1,703	1,667	286
	<hr/>	<hr/>	<hr/>	<hr/>
	1,270	126,033	124,330	14,668

Scattering, 2 Candidates. Total 2.

Higgins over Mulnix, 1,703.



FOR ATTORNEY GENERAL

COUNTIES	W. P. Collins (Soc.)	Leslie E. Hubbard (Dem.)	William C. Robinson (Rep.-Proh.)
Adams	160	1,579	1,131
Alamosa	90	922	569
Arapahoe	186	1,924	1,687
Archuleta	37	657	430
Baca	264	895	830
Bent	68	1,038	889
Boulder	763	5,455	4,565
Chaffee	138	1,828	1,043
Cheyenne	107	567	634
Clear Creek	52	974	512
Conejos	37	881	898
Costilla	36	921	624
Crowley	77	939	896
Custer	45	468	327
Delta	407	1,878	1,978
Denver	3,086	32,426	26,735
Dolores	46	202	47
Douglas	28	625	614
Eagle	71	851	488
Elbert	110	921	981
El Paso	804	5,831	8,237
Fremont	342	2,525	2,415
Garfield	212	1,946	1,278
Gilpin	35	510	390
Grand	29	489	396
Gunnison	174	1,311	731
Hinsdale	28	149	105
Huerfano	46	2,439	2,141
Jackson	10	236	190
Jefferson	199	2,480	2,252

FOR ATTORNEY GENERAL—Continued

COUNTIES	W. P. Collins (Soc.)	Leslie E. Hubbard (Dem.)	William C. Robinson (Rep.-Proh.)
Kiowa	141	731	741
Kit Carson	190	1,084	1,140
Lake	288	1,936	1,207
La Plata	210	2,141	1,082
Larimer	574	3,254	3,449
Las Animas	250	3,986	3,256
Lincoln	132	1,209	1,333
Logan	188	1,945	1,710
Mesa	775	3,039	2,800
Mineral	53	236	134
Moffat	42	623	517
Montzeuma	98	1,183	490
Montrose	300	1,889	1,507
Morgan	175	1,618	1,831
Otero	219	3,233	2,841
Ouray	108	760	444
Park	32	509	385
Phillips	87	514	628
Pitkin	124	719	300
Prowers	259	1,571	1,754
Pueblo	1,338	8,107	6,881
Rio Blanco	23	586	459
Rio Grande	63	1,231	1,097
Routt	176	1,480	976
Saguache	66	926	693
San Juan	89	526	262
San Miguel	93	1,036	635
Sedgwick	75	389	514
Summit	56	598	273
Teller	377	2,779	1,852

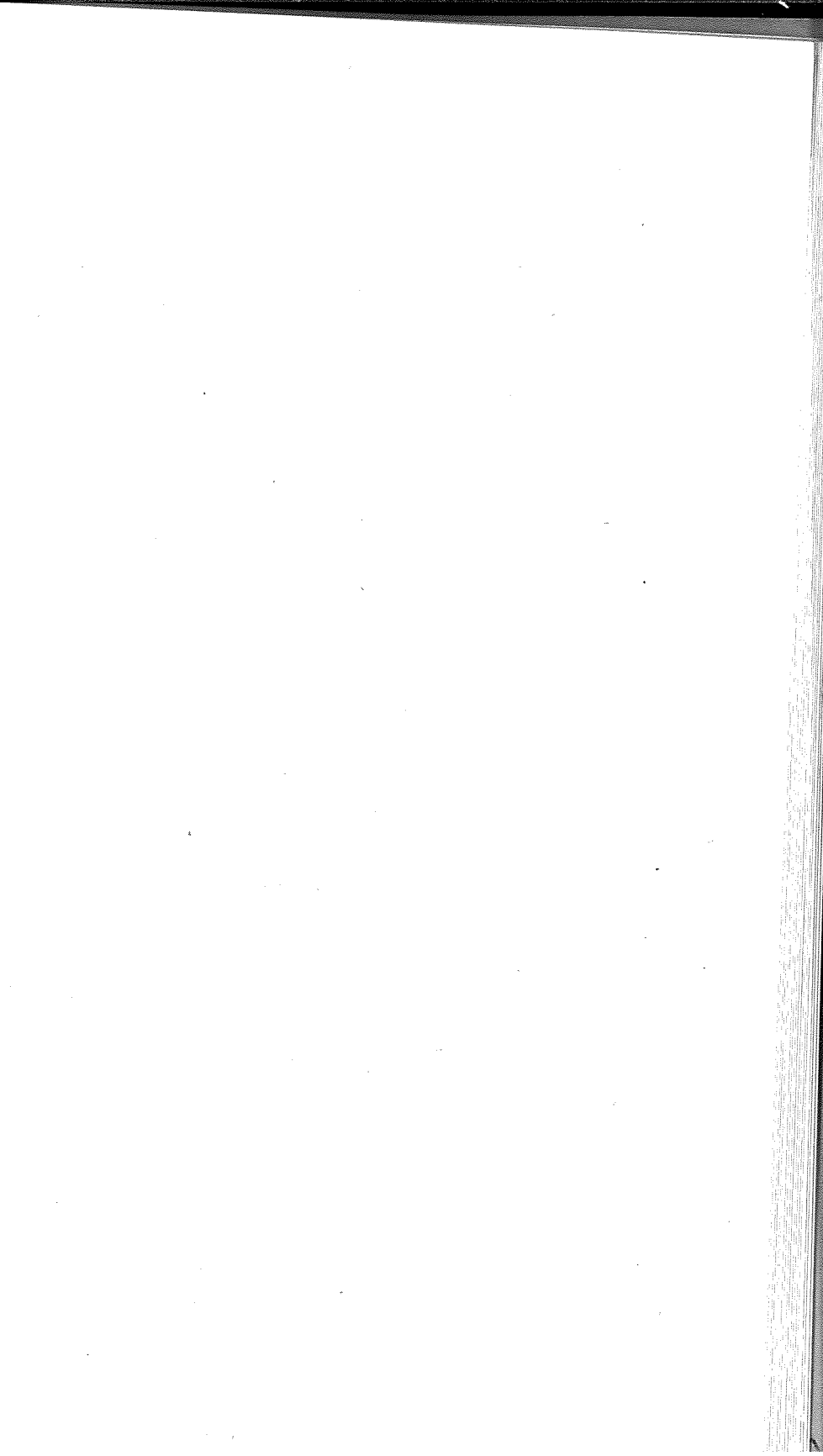
ABSTRACT OF VOTES CAST AT

FOR ATTORNEY GENERAL—Continued

COUNTIES	W. F. Collins (Soc.)	Leslie E. Hubbard (Dem.)	William C. Robinson (Rep.-Proh.)
Washington	167	1,215	1,072
Weld	503	6,116	6,385
Yuma	283	1,678	1,648
	<hr/>	<hr/>	<hr/>
	15,241	132,714	114,309

Scattering, 1 Candidate. Total, 1 Vote.

Hubbard over Robinson, 18,405.



FOR SUPERINTENDENT OF PUBLIC INSTRUCTION

COUNTIES	Mary E. Hotz Blakeley (Soc.)	Mary C. C. Bradford (Dem.)	Helen M. Wixson (Rep.-Proh.)
Adams	158	1,720	1,117
Alamosa	84	979	545
Arapahoe	187	2,067	1,614
Archuleta	34	626	440
Baca	270	923	850
Bent	65	1,112	953
Boulder	888	5,886	4,427
Chaffee	128	1,996	967
Cheyenne	96	610	624
Clear Creek	61	1,037	496
Conejos	24	941	874
Costilla	41	913	630
Crowley	78	916	908
Custer	49	470	335
Delta	380	1,988	1,941
Denver	3,350	36,865	22,541
Dolores	49	209	42
Douglas	33	661	583
Eagle	74	904	465
Elbert	122	959	952
El Paso	829	6,503	7,535
Fremont	337	2,645	2,287
Garfield	209	2,028	1,248
Gilpin	39	563	377
Gunnison	170	1,349	731
Grand	24	525	427
Hinsdale	29	146	99
Huerfano	42	2,357	2,123
Jackson	8	256	178
Jefferson	222	2,709	2,077

FOR SUPERINTENDENT OF PUBLIC INSTRUCTION—Continued

COUNTIES	Mary E. Hotz Blakeley (Soc.)	Mary C. C. Bradford (Dem.)	Helen M. Wixson (Rep.-Proh.)
Kiowa	126	755	761
Kit Carson	193	1,112	1,185
Lake	285	1,981	1,118
La Plata	218	2,099	1,121
Larimer	494	3,577	3,279
Las Animas	254	4,081	3,187
Lincoln	142	1,259	1,311
Logan	179	2,059	1,652
Mesa	769	3,118	2,776
Mineral	47	240	131
Moffat	42	677	484
Montezuma	95	1,191	523
Montrose	353	1,883	1,533
Morgan	170	1,739	1,781
Otero	228	3,254	2,871
Ouray	92	775	444
Park	36	522	399
Phillips	97	536	616
Pitkin	122	772	273
Prowers	266	1,732	1,655
Pueblo	1,188	8,958	6,053
Rio Blanco	24	613	448
Rio Grande	69	1,303	1,044
Routt	158	1,580	937
Saguache	63	944	699
San Juan	100	530	241
San Miguel	91	1,064	674
Sedgwick	69	409	516
Summit	44	597	285
Teller	381	2,857	1,896

FOR SUPERINTENDENT OF PUBLIC INSTRUCTION—Continued

COUNTIES	Mary E. Hotz Blakeley (Soc.)	Mary C. C. Bradford (Dem.)	Helen M. Wixson (Rep.-Proh.)
Washington	167	1,291	1,053
Weld	523	6,744	6,283
Yuma	279	1,719	1,695
Total	15,444	142,834	107,310

Scattering, 1 Candidate. Total, 1 Vote.

Bradford over Wixson, 35,524.



FOR REGENTS OF THE UNIVERSITY OF COLORADO

COUNTIES	Thomas T. Barnard (Dem.)	William J. King (Rep.)	Grace B. Marians (Soc.)	Edwin A. Miller (Prog.)	Clifford W. Mills (Dem.)	Anna Wolcott Valle (Rep.)	Love Westfall (Soc.)
Adams	1,301	1,131	152	43	1,235	1,174	145
Alamosa	855	591	103	16	781	537	83
Arapahoe	1,687	1,635	204	52	1,625	1,723	176
Archuleta	522	456	32	8	521	434	27
Baca	825	808	253	11	731	729	210
Bent	985	960	66	27	848	895	57
Boulder	4,911	4,791	710	174	4,670	4,667	706
Chaffee	1,716	1,065	150	25	1,585	996	133
Cheyenne	516	589	103	24	474	545	90
Clear Creek	900	509	62	17	786	536	74
Conejos	776	900	25	19	659	828	17
Costilla	869	617	38	12	839	601	40
Crowley	901	871	79	12	830	833	66
Custer	424	343	41	5	391	328	34
Delta	1,727	1,819	390	64	1,630	1,693	359
Denver	27,748	23,588	3,189	1,034	29,740	28,875	3,009

ABSTRACT OF VOTES CAST AT

GENERAL ELECTION, TUESDAY, NOV. 7, 1916.

Dolores	171	41	45	1	173	47	43
Douglas	563	596	27	11	514	593	22
Eagle	725	505	76	12	667	474	70
Elbert	817	944	110	25	729	908	98
El Paso	6,058	7,240	851	329	5,520	7,209	750
Fremont	2,357	2,367	334	57	2,107	2,274	314
Garfield	1,661	1,250	215	23	1,565	1,211	199
Gilpin	474	411	34	12	409	399	33
Grand	439	386	32	10	409	372	23
Gunnison	1,134	737	154	19	1,124	734	156
Hinsdale	134	96	31	1	140	97	26
Huerfano	2,278	2,120	45	23	2,187	2,082	38
Jackson	214	179	7	9	195	165	6
Jefferson	2,164	2,202	187	54	2,006	2,209	190
Kiowa	692	690	120	21	601	677	112
Kit Carson	992	1,107	147	35	876	1,028	137
Lake	1,782	1,286	264	31	1,664	1,252	262
La Plata	1,959	1,022	204	30	1,786	1,025	184
Larimer	2,870	3,140	503	164	2,814	3,102	442
Las Animas	3,648	3,497	321	277	3,211	3,413	213
Lincoln	1,084	1,261	129	38	1,022	1,190	121
Logan	1,718	1,700	173	45	1,593	1,545	148
Mesa	2,731	2,454	708	127	2,571	2,345	720
Mineral	204	158	45	6	185	142	43

FOR REGENTS OF THE UNIVERSITY OF COLORADO—Continued

COUNTIES	Thomas T. Barnard (Dem.)	William J. King (Rep.)	Grace B. Marians (Soc.)	Edwin A. Miller (Prog.)	Clifford W. Mills (Dem.)	Anna Wolcott Valle (Rep.)	Love Westfall (Soc.)
Moffat	560	525	47	8	511	510	41
Montezuma	1,082	476	82	19	979	455	77
Montrose	1,824	1,475	323	47	1,666	1,397	301
Morgan	1,452	1,678	157	39	1,298	1,684	133
Otero	3,087	2,738	215	67	2,818	2,575	185
Ouray	674	448	80	14	639	429	81
Park	442	406	41	15	416	389	29
Phillips	463	566	80	16	432	528	75
Pitkin	615	287	119	8	585	303	120
Prowers	1,468	1,669	252	62	1,296	1,496	219
Pueblo	7,824	6,117	1,222	254	7,842	6,326	1,334
Rio Blanco	533	449	26	8	495	416	19
Rio Grande	1,132	1,026	68	17	990	1,002	53
Routt	1,331	1,011	154	25	1,217	979	144
Saguache	801	841	61	24	699	696	51
San Juan	466	242	95	12	446	252	90

ABSTRACT OF VOTES CAST AT

San Miguel	903	686	89	9	901	662	84
Sedgwick	324	508	71	14	301	484	58
Summit	545	288	41	9	517	267	41
Teller	2,945	1,844	359	72	2,270	1,787	336
Washington	1,032	1,057	144	30	901	962	120
Weld	5,874	6,042	471	248	5,299	6,000	467
Yuma	1,474	1,549	269	33	1,359	1,470	249
	<u>120,383</u>	<u>107,990</u>	<u>14,825</u>	<u>3,953</u>	<u>115,290</u>	<u>110,956</u>	<u>13,883</u>
Scattering, 1 Candidate. Total, 1 Vote.							
Barnard over Vaile						9,427	
Mills over Valle						4,334	

ABSTRACT OF VOTES CAST AT

**FOR DISTRICT JUDGE SECOND JUDICIAL DISTRICT
(To Fill Vacancy)**

Alden C. Galland, Socialist	2,550
Orrin N. Hilton, Independent-Liberal-Progressive	14,549
John I. Mullins, Democrat	23,231
Greeley W. Whitford, Republican	21,443

Mullins over Whitford, 1,788.

**FOR DISTRICT JUDGE THIRD JUDICIAL DISTRICT
(To Fill Vacancy)**

COUNTIES	Granby Hillyer (Rep.)	A. C. McChesney (Dem.)
Baca	1,081	894
Bent	1,183	1,039
Huerfano	2,155	2,375
Las Animas	3,052	4,745
Prowers	2,098	1,663
	<hr/>	<hr/>
	9,569	10,716

Scattering, 1 Candidate. Total, 1 Vote.

McChesney over Hillyer, 1,147.

FOR DISTRICT JUDGE ELEVENTH JUDICIAL DISTRICT
(To Fill Vacancy)

COUNTIES	James L. Cooper (Rep.)	George H. Wilkes (Dem.)
Chaffee	1,513	1,566
Custer	459	444
Fremont	3,591	1,786
Park	526	448
	<hr/>	<hr/>
	6,089	4,244

Cooper over Wilkes, 1,845.

ABSTRACT OF VOTES CAST AT

FOR DISTRICT ATTORNEY FIRST JUDICIAL DISTRICT

COUNTIES	Flor Ashbaugh (Rep.)	Samuel W. Johnson (Dem.)
Adams	1,166	1,674
Arapahoe	2,385	1,714
Clear Creek	687	927
Gilpin	628	478
Grand	429	458
Jefferson	2,208	2,794
	<hr/>	<hr/>
	7,503	8,045

Johnson over Ashbaugh, 542.

FOR DISTRICT ATTORNEY SECOND JUDICIAL DISTRICT

Horace G. Benson, Peoples-Independent	7,743
Arthur R. Brandt, Socialist	2,298
William E. Foley, Democrat	23,796
John W. Gillespie, Republican	19,388
Barney Haughey, Liberal	165
John Hipp, Independent-Citizen	9,361

Foley over Gillespie, 4,408.

FOR DISTRICT ATTORNEY THIRD JUDICIAL DISTRICT

COUNTIES	Joseph W. Hawley (Rep.)	Allen M. Lambricht (Dem.)
Baca	948	976
Bent	1,000	1,203
Huerfano	2,209	2,362
Las Animas	4,127	3,588
Prowers	1,941	1,688
	<hr/>	<hr/>
	10,225	9,817

Hawley over Lambricht, 408.

FOR DISTRICT ATTORNEY FOURTH JUDICIAL DISTRICT

COUNTIES	Michael W. Purcell (Dem.)	Willis L. Strachan (Rep.-Prog.)
Cheyenne	698	576
Douglas	697	580
Elbert	896	1,202
El Paso	4,810	10,245
Kit Carson	1,102	1,276
Lincoln	1,195	1,427
Teller	1,837	3,067
	<hr/>	<hr/>
	11,235	18,373

Strachan over Purcell, 7,138

ABSTRACT OF VOTES CAST AT

FOR DISTRICT ATTORNEY FIFTH JUDICIAL DISTRICT

COUNTIES	Michael F. Ryan (Rep.)	Barney L. Whatley (Dem.)
Eagle	640	840
Lake	1,793	1,827
Summit	503	473
	<hr/>	<hr/>
	2,936	3,140

Whatley over Ryan, 204.

FOR DISTRICT ATTORNEY SIXTH JUDICIAL DISTRICT

COUNTIES	Alonzo M. Emigh (Rep.)	George W. Lane (Dem.)
Archuleta	631	484
Dolores	82	195
La Plata	1,566	2,066
Montezuma	650	1,173
San Juan	333	546
	<hr/>	<hr/>
	3,262	4,464

Lane over Emigh, 1,202.

FOR DISTRICT ATTORNEY SEVENTH JUDICIAL DISTRICT

COUNTIES	John L. Stivers (Rep.)	William Weiser (Dem.)
Delta	1,906	2,092
Gunnison	775	1,422
Hinsdale	100	163
Mesa	2,008	4,519
Montrose	1,766	2,099
Ouray	467	796
San Miguel	708	1,096
	7,730	12,187

Weiser over Stivers, 4,457

FOR DISTRICT ATTORNEY EIGHTH JUDICIAL DISTRICT

COUNTIES	Geo. W. Charette (Soc.)	Albert Dakan (Prog.)	Russell W. Fleming (Dem.)	Victor E. Keyes (Rep.)
Boulder	636	272	6,114	4,122
Jackson	10	2	240	164
Larimer	497	80	4,126	2,770
Weld	407	160	5,989	6,870
	1,550	514	16,469	12,926

Fleming over Keyes, 3,543.

ABSTRACT OF VOTES CAST AT

FOR DISTRICT ATTORNEY NINTH JUDICIAL DISTRICT

COUNTIES	Frank Delaney (Dem.)	John L. Noonan (Rep.)
Garfield	1,944	1,567
Moffat	744	471
Pitkin	715	411
Rio Blanco	864	282
Routt	1,524	1,121
	<hr/>	<hr/>
	5,791	3,852

Delaney over Noonan, 1,939.

FOR DISTRICT ATTORNEY TENTH JUDICIAL DISTRICT

COUNTIES	Charles B. Hughes (Dem.)	Charles M. Rose (Rep.)
Crowley	1,027	947
Kiowa	817	811
Otero	3,332	2,720
Pueblo	9,741	6,584
	<hr/>	<hr/>
	14,917	11,062

Scattering, 1 Candidate. Total, 9 Votes.

Hughes over Rose, 3,855.