

STATE OF COLORADO

Abstract of Votes Cast

AT THE

Primary Election

Held on the Twelfth Day of September,
A. D. 1916

AND AT THE

General Election

Held on the Seventh Day of November,
A. D. 1916

FOR

Presidential Electors, Congressmen, and State,
Legislative and District Officers

ALSO THE

Proposed Constitutional Amendments
Initiated and Referred Bills

COMPILED FROM OFFICIAL RETURNS

BY

JAMES R. NOLAND
Secretary of State

1916



DENVER, COLORADO
THE C. F. HOECKEL BLANK BOOK AND LITHOGRAPHING CO.
1916

ABSTRACT OF VOTES CAST AT

FOR SECRETARY OF STATE

| COUNTIES | William L. Henderson (Prog.) | James R. Noland (Dem.) | John E. Barner (Rep.-Prob.) | Charles Williams (Lib.) | Lizabeth A. Williams (Soc.) |
|-------------------|---------------------------------|---------------------------|--------------------------------|----------------------------|--------------------------------|
| Adams | 40 | 1,521 | 1,287 | 14 | 158 |
| Alamosa | 14 | 886 | 651 | 9 | 75 |
| Arapahoe | 47 | 1,914 | 1,761 | 13 | 197 |
| Archuleta | 17 | 601 | 460 | 13 | 31 |
| Baca | 17 | 894 | 831 | 10 | 224 |
| Bent | 29 | 989 | 1,043 | 5 | 60 |
| Boulder | 119 | 5,099 | 5,002 | 55 | 653 |
| Chaffee | 34 | 1,895 | 1,026 | 8 | 135 |
| Cheyenne | 31 | 576 | 613 | 13 | 100 |
| Clear Creek | 16 | 987 | 561 | 7 | 47 |
| Conejos | 33 | 853 | 964 | 10 | 22 |
| Costilla | 11 | 911 | 660 | 10 | 26 |
| Crowley | 28 | 933 | 926 | 6 | 64 |
| Custer | 10 | 450 | 348 | 2 | 41 |
| Delta | 47 | 1,591 | 2,414 | 16 | 371 |
| Denver | 930 | 30,841 | 28,465 | 498 | 2,516 |
| Dolores | 2 | 207 | 44 | 3 | 45 |
| Douglas | 20 | 604 | 614 | 8 | 20 |
| Eagle | 22 | 837 | 508 | 13 | 70 |
| Elbert | 48 | 923 | 970 | 8 | 111 |
| El Paso | 313 | 6,140 | 7,846 | 33 | 790 |
| Fremont | 66 | 2,471 | 2,568 | 25 | 320 |
| Garfield | 52 | 1,870 | 1,325 | 27 | 194 |
| Gilpin | 11 | 524 | 427 | 5 | 43 |
| Grand | 11 | 496 | 403 | 6 | 21 |
| Gunnison | 29 | 1,324 | 770 | 12 | 155 |
| Hinsdale | 2 | 140 | 111 | 1 | 30 |
| Huerfano | 35 | 2,314 | 2,088 | 22 | 13 |
| Jackson | 6 | 201 | 250 | 2 | 10 |
| Jefferson | 64 | 2,443 | 2,348 | 33 | 176 |

FOR SECRETARY OF STATE—Continued

| COUNTIES | William L. Henderson (Prog.) | James R. Noland (Dem.) | John E. Ramer (Rep.-Proh.) | Charles Williams (Lib.) | Lizabeth A. Williams (Soc.) |
|------------------|---------------------------------|---------------------------|-------------------------------|----------------------------|--------------------------------|
| Kiowa | 19 | 718 | 790 | 3 | 120 |
| Kit Carson | 58 | 1,052 | 1,181 | 17 | 165 |
| Lake | 73 | 1,917 | 1,321 | 18 | 265 |
| La Plata | 58 | 2,143 | 1,044 | 12 | 197 |
| Larimer | 100 | 2,798 | 4,223 | 38 | 470 |
| Las Animas | 89 | 3,990 | 3,384 | 60 | 291 |
| Lincoln | 45 | 1,184 | 1,335 | 11 | 133 |
| Logan | 149 | 1,879 | 1,751 | 25 | 165 |
| Mesa | 129 | 2,988 | 2,913 | 21 | 768 |
| Mineral | 2 | 231 | 151 | | 48 |
| Moffat | 17 | 595 | 549 | 6 | 47 |
| Montezuma | 24 | 1,187 | 504 | 9 | 92 |
| Montrose | 47 | 1,860 | 1,680 | 13 | 304 |
| Morgan | 61 | 1,561 | 1,892 | 19 | 157 |
| Otero | 47 | 3,223 | 2,916 | 14 | 215 |
| Ouray | 14 | 742 | 481 | 8 | 88 |
| Park | 4 | 510 | 407 | 8 | 28 |
| Phillips | 22 | 515 | 625 | 3 | 88 |
| Pitkin | 14 | 700 | 332 | 3 | 124 |
| Prowers | 86 | 1,545 | 1,803 | 28 | 232 |
| Pueblo | 164 | 7,761 | 7,311 | 78 | 1,086 |
| Rio Blanco | 7 | 594 | 456 | 7 | 21 |
| Rio Grande | 19 | 1,218 | 1,106 | 10 | 57 |
| Routt | 47 | 1,470 | 1,011 | 12 | 156 |
| Saguache | 16 | 937 | 716 | 9 | 60 |
| San Juan | 10 | 525 | 252 | 8 | 80 |
| San Miguel | 34 | 1,012 | 648 | 9 | 88 |
| Sedgwick | 22 | 380 | 531 | 7 | 67 |
| Summit | 17 | 584 | 292 | 2 | 46 |
| Teller | 74 | 2,779 | 1,999 | 28 | 360 |

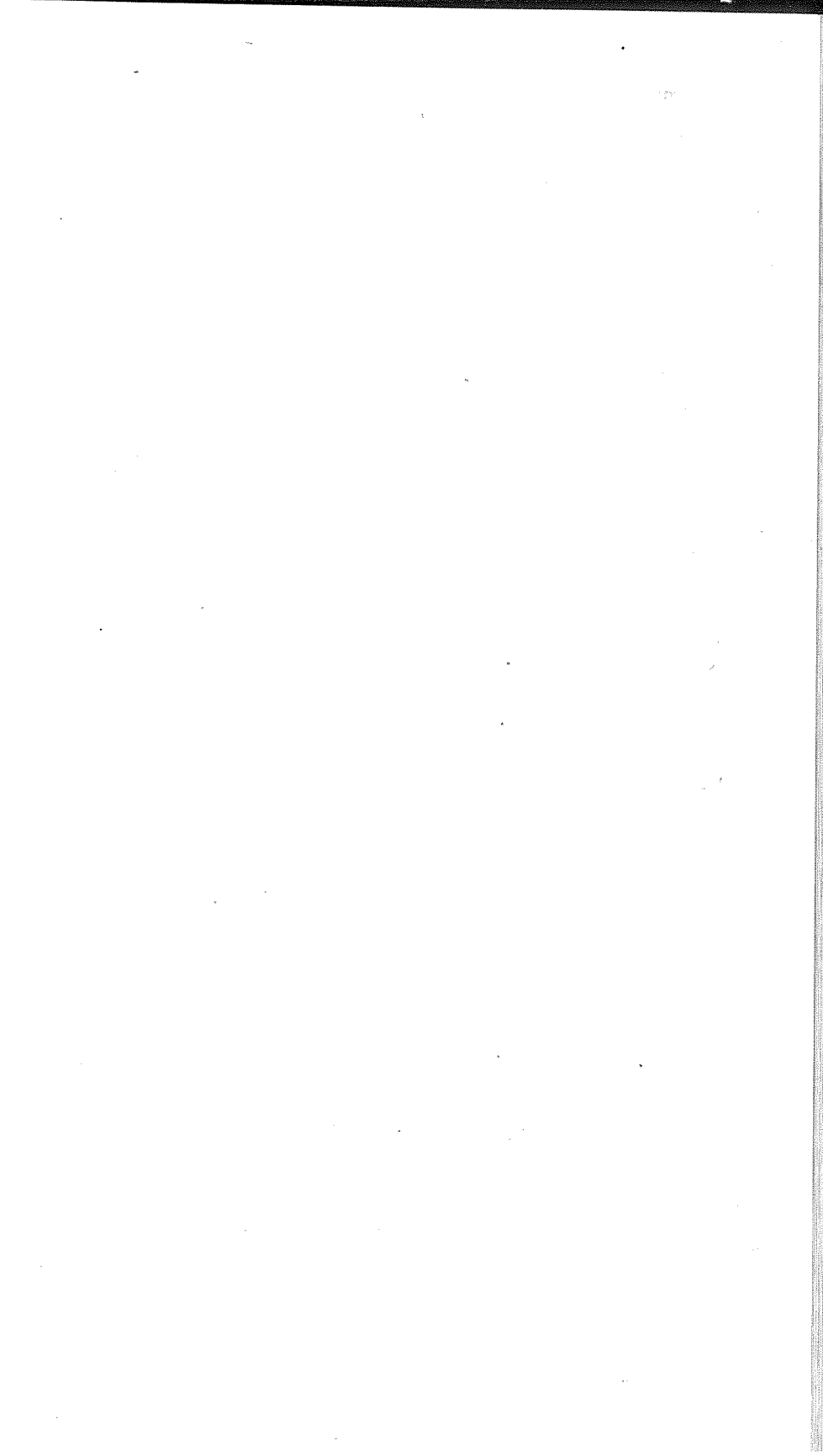
ABSTRACT OF VOTES CAST AT

FOR SECRETARY OF STATE—Continued

| COUNTIES | William L. Henderson (Prog.) | James R. Noland (Dem.) | John E. Ramer (Rep.-Proh.) | Charles Williams (Lib.) | Lizabeth A. Williams (Soc.) |
|------------------|---------------------------------|---------------------------|-------------------------------|----------------------------|--------------------------------|
| Washington | 85 | 1,159 | 1,141 | 7 | 140 |
| Weld | 179 | 6,060 | 6,632 | 40 | 553 |
| Yuma | 56 | 1,693 | 1,694 | 18 | 277 |
| | <hr/> | <hr/> | <hr/> | <hr/> | <hr/> |
| | 3,882 | 128,955 | 120,355 | 1,438 | 13,706 |

Scattering, 1 Candidate. Total, 1 Vote.

Noland over Ramer, 8,600.



ABSTRACT OF VOTES CAST AT

FOR AUDITOR OF STATE

| COUNTIES | Henry C. Ehrman (Lib.) | Charles H. Leckenby (Dem.) | J. H. Mayfield (Soc.) | G. F. Stevens (Proh.-Prog.) | Olie Thorson (Rep.) |
|-------------------|---------------------------|-------------------------------|--------------------------|--------------------------------|------------------------|
| Adams | 21 | 1,533 | 173 | 125 | 1,105 |
| Alamosa | 7 | 934 | 85 | 85 | 508 |
| Arapahoe | 38 | 1,946 | 198 | 177 | 1,563 |
| Archuleta | 3 | 583 | 30 | 43 | 434 |
| Baca | 6 | 879 | 275 | 98 | 757 |
| Bent | 5 | 1,015 | 68 | 156 | 894 |
| Boulder | 24 | 5,340 | 705 | 712 | 4,111 |
| Chaffee | 16 | 1,875 | 142 | 114 | 950 |
| Cheyenne | 10 | 574 | 107 | 96 | 528 |
| Clear Creek | 13 | 1,030 | 50 | 58 | 464 |
| Conejos | 9 | 852 | 24 | 75 | 871 |
| Costilla | 3 | 925 | 40 | 47 | 613 |
| Crowley | 9 | 917 | 73 | 101 | 824 |
| Custer | 9 | 467 | 38 | 24 | 328 |
| Delta | 9 | 1,910 | 401 | 348 | 1,613 |
| Denver | 704 | 33,127 | 2,930 | 3,311 | 21,462 |
| Dolores | 2 | 208 | 42 | 3 | 40 |
| Douglas | 8 | 633 | 29 | 47 | 576 |
| Eagle | 4 | 769 | 70 | 51 | 566 |
| Elbert | 16 | 914 | 115 | 109 | 898 |
| El Paso | 45 | 6,051 | 816 | 1,107 | 7,033 |
| Fremont | 14 | 2,558 | 327 | 427 | 2,071 |
| Garfield | 6 | 1,659 | 208 | 107 | 1,630 |
| Gilpin | 8 | 522 | 35 | 39 | 363 |
| Grand | 2 | 524 | 21 | 43 | 354 |
| Gunnison | 9 | 1,292 | 167 | 95 | 715 |
| Hinsdale | ... | 148 | 28 | 6 | 105 |
| Huerfano | 7 | 2,340 | 43 | 79 | 2,065 |
| Jackson | 1 | 273 | 10 | 10 | 135 |
| Jefferson | 11 | 2,464 | 199 | 237 | 2,138 |

FOR AUDITOR OF STATE—Continued

| COUNTIES | Henry C. Ehrman (Lib.) | Charles H. Leckenby (Dem.) | J. H. Mayfield (Soc.) | G. F. Stevens (Proh-Prog.) | Olie Thorson (Rep.) |
|------------------|---------------------------|-------------------------------|--------------------------|-------------------------------|------------------------|
| Kiowa | 2 | 719 | 123 | 92 | 709 |
| Kit Carson | 11 | 1,038 | 179 | 155 | 1,057 |
| Lake | 8 | 1,842 | 255 | 127 | 1,367 |
| La Plata | 22 | 2,167 | 199 | 125 | 953 |
| Larimer | 26 | 3,266 | 553 | 452 | 3,130 |
| Las Animas | 44 | 3,816 | 234 | 345 | 3,289 |
| Lincoln | 12 | 1,192 | 134 | 180 | 1,146 |
| Logan | 12 | 1,924 | 177 | 260 | 1,542 |
| Mesa | 16 | 2,984 | 745 | 583 | 2,389 |
| Mineral | 1 | 243 | 49 | 13 | 124 |
| Moffat | 6 | 625 | 38 | 38 | 509 |
| Montezuma | 2 | 1,265 | 89 | 79 | 383 |
| Montrose | 13 | 1,964 | 311 | 216 | 1,383 |
| Morgan | 10 | 1,592 | 156 | 205 | 1,695 |
| Otero | 14 | 3,241 | 220 | 319 | 2,578 |
| Ouray | 5 | 756 | 91 | 63 | 413 |
| Park | 0 | 501 | 36 | 38 | 308 |
| Phillips | 5 | 505 | 88 | 75 | 574 |
| Pitkin | 4 | 744 | 118 | 23 | 294 |
| Prowers | 17 | 1,584 | 257 | 299 | 1,500 |
| Pueblo | 55 | 8,823 | 1,225 | 728 | 5,624 |
| Rio Blanco | 2 | 593 | 18 | 41 | 433 |
| Rio Grande | 10 | 1,252 | 58 | 121 | 951 |
| Routt | 10 | 1,901 | 136 | 74 | 658 |
| Saguache | 14 | 932 | 59 | 64 | 659 |
| San Juan | 6 | 500 | 80 | 26 | 279 |
| San Miguel | 5 | 1,014 | 84 | 59 | 629 |
| Sedgwick | 4 | 368 | 71 | 65 | 490 |
| Summit | 5 | 588 | 54 | 47 | 256 |
| Teller | 16 | 2,748 | 380 | 217 | 1,794 |

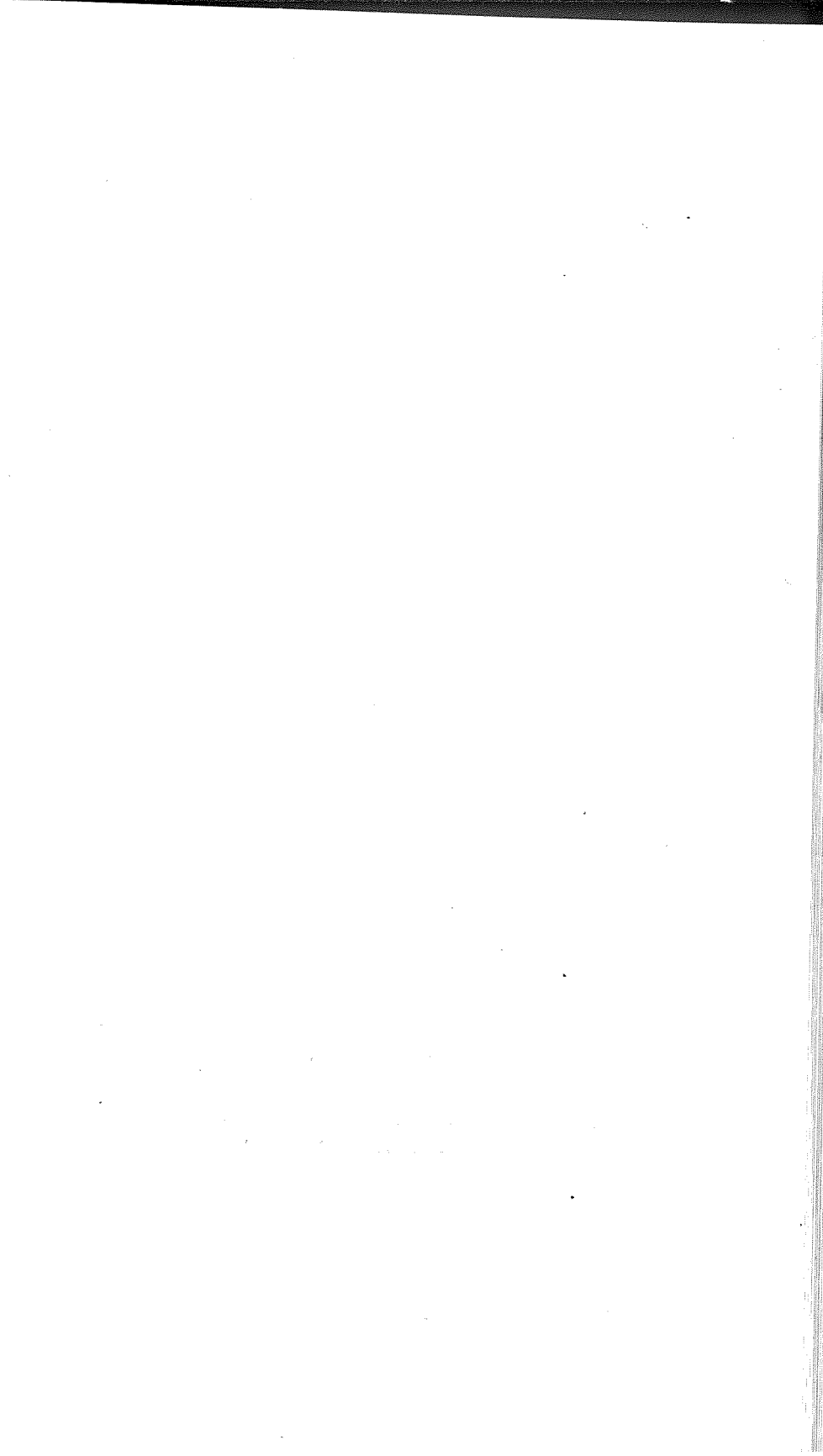
ABSTRACT OF VOTES CAST AT

FOR AUDITOR OF STATE—Continued

| COUNTIES | Henry C. Ehrman (Lib.) | Charles H. Leckenby (Dem.) | J. H. Mayfield (Soc.) | G. F. Stevens (Profr-Prog.) | Olie Thorson (Rep.) |
|--------------------|---------------------------|-------------------------------|--------------------------|--------------------------------|------------------------|
| Washington | 22 | 1,185 | 147 | 168 | 977 |
| Weld | 98 | 6,173 | 470 | 1,160 | 5,808 |
| Yuma | 14 | 1,655 | 298 | 229 | 1,484 |
| Total | 1,510 | 133,962 | 14,585 | 14,616 | 101,099 |

Scattering, 1 Candidate. Total, 1 Vote.

Leckenby over Thorson, 32,863.



ABSTRACT OF VOTES CAST AT

FOR STATE TREASURER

| COUNTIES | Cyrillus B. Ayres (Lib.) | Robert H. Higgins (Dem.) | Harry E. Mulnix (Rep.) | Alfred Pomeroy (Soc.) |
|-------------------|-----------------------------|-----------------------------|---------------------------|--------------------------|
| Adams | 19 | 1,535 | 1,273 | 147 |
| Alamosa | 2 | 872 | 659 | 86 |
| Arapahoe | 13 | 1,844 | 1,866 | 187 |
| Archuleta | 10 | 583 | 460 | 29 |
| Baca | 5 | 927 | 822 | 272 |
| Bent | 6 | 1,063 | 1,007 | 64 |
| Boulder | 32 | 5,256 | 4,876 | 738 |
| Chaffee | 13 | 1,823 | 1,152 | 133 |
| Cheyenne | 7 | 584 | 630 | 91 |
| Clear Creek | 2 | 964 | 580 | 56 |
| Conejos | 17 | 823 | 994 | 23 |
| Costilla | 7 | 952 | 631 | 37 |
| Crowley | 8 | 956 | 911 | 73 |
| Custer | ... | 463 | 350 | 43 |
| Delta | 10 | 1,901 | 1,994 | 399 |
| Denver | 571 | 26,650 | 32,279 | 3,166 |
| Dolores | 2 | 189 | 57 | 46 |
| Douglas | 4 | 583 | 694 | 28 |
| Eagle | 7 | 735 | 618 | 80 |
| Elbert | 6 | 908 | 1,023 | 114 |
| El Paso | 42 | 6,135 | 7,869 | 822 |
| Fremont | 12 | 2,425 | 2,682 | 330 |
| Garfield | 13 | 1,793 | 1,472 | 211 |
| Gilpin | 4 | 484 | 474 | 33 |
| Grand | 2 | 457 | 461 | 23 |
| Gunnison | 6 | 1,265 | 832 | 154 |
| Hinsdale | ... | 143 | 111 | 28 |
| Huerfano | 14 | 2,430 | 2,201 | 33 |
| Jackson | 1 | 222 | 186 | 8 |
| Jefferson | 15 | 2,363 | 2,461 | 192 |

FOR STATE TREASURER—Continued

| COUNTIES | Cyrillus B. Ayres (Lib.) | Robert H. Higgins (Dem.) | Harry E. Mulnix (Rep.) | Alfred Pomeroy (Soc.) |
|------------------|-----------------------------|-----------------------------|---------------------------|--------------------------|
| Kiowa | 3 | 741 | 783 | 125 |
| Kit Carson | 11 | 1,053 | 1,028 | 174 |
| Lake | 13 | 1,587 | 1,642 | 345 |
| La Plata | 30 | 2,068 | 1,105 | 216 |
| Larimer | 25 | 3,177 | 3,682 | 514 |
| Las Animas | 37 | 3,630 | 3,958 | 208 |
| Lincoln | 9 | 1,203 | 1,342 | 128 |
| Logan | 19 | 1,912 | 1,753 | 191 |
| Mesa | 32 | 2,999 | 2,920 | 774 |
| Mineral | ... | 218 | 160 | 47 |
| Moffat | 2 | 584 | 559 | 40 |
| Montezuma | 3 | 1,139 | 542 | 95 |
| Montrose | 12 | 1,998 | 1,549 | 321 |
| Morgan | 11 | 1,591 | 1,910 | 156 |
| Otero | 22 | 3,266 | 2,880 | 214 |
| Ouray | 6 | 715 | 509 | 91 |
| Park | ... | 491 | 435 | 36 |
| Phillips | 7 | 526 | 622 | 88 |
| Pitkin | 5 | 646 | 409 | 121 |
| Prowers | 12 | 1,677 | 1,718 | 254 |
| Pueblo | 31 | 9,269 | 6,266 | 1,060 |
| Rio Blanco | 2 | 572 | 490 | 16 |
| Rio Grande | 14 | 1,203 | 1,096 | 62 |
| Routt | 12 | 1,440 | 1,068 | 158 |
| Saguache | 6 | 898 | 754 | 56 |
| San Juan | 4 | 466 | 337 | 78 |
| San Miguel | 2 | 963 | 771 | 89 |
| Sedgwick | 4 | 391 | 528 | 71 |
| Summit | 1 | 588 | 299 | 44 |
| Teller | 11 | 2,607 | 2,166 | 354 |

ABSTRACT OF VOTES CAST AT

FOR STATE TREASURER—Continued

| COUNTIES | Cyrillus B. Ayres (Lib.) | Robert H. Higgins (Dem.) | Harry E. Mulnix (Rep.) | Alfred Pomeroy (Soc.) |
|------------------|-----------------------------|-----------------------------|---------------------------|--------------------------|
| Washington | 19 | 1,160 | 1,204 | 147 |
| Weld | 43 | 6,219 | 6,553 | 463 |
| Yuma | 12 | 1,703 | 1,667 | 286 |
| | <hr/> | <hr/> | <hr/> | <hr/> |
| | 1,270 | 126,033 | 124,330 | 14,668 |

Scattering, 2 Candidates. Total 2.

Higgins over Mulnix, 1,703.



FOR ATTORNEY GENERAL

| COUNTIES | W. P. Collins (Soc.) | Leslie E. Hubbard (Dem.) | William C. Robinson (Rep.-Proh.) |
|-------------------|-------------------------|-----------------------------|-------------------------------------|
| Adams | 160 | 1,579 | 1,131 |
| Alamosa | 90 | 922 | 569 |
| Arapahoe | 186 | 1,924 | 1,687 |
| Archuleta | 37 | 657 | 430 |
| Baca | 264 | 895 | 830 |
| Bent | 68 | 1,038 | 889 |
| Boulder | 763 | 5,455 | 4,565 |
| Chaffee | 138 | 1,828 | 1,043 |
| Cheyenne | 107 | 567 | 634 |
| Clear Creek | 52 | 974 | 512 |
| Conejos | 37 | 881 | 898 |
| Costilla | 36 | 921 | 624 |
| Crowley | 77 | 939 | 896 |
| Custer | 45 | 468 | 327 |
| Delta | 407 | 1,878 | 1,978 |
| Denver | 3,086 | 32,426 | 26,735 |
| Dolores | 46 | 202 | 47 |
| Douglas | 28 | 625 | 614 |
| Eagle | 71 | 851 | 488 |
| Elbert | 110 | 921 | 981 |
| El Paso | 804 | 5,831 | 8,237 |
| Fremont | 342 | 2,525 | 2,415 |
| Garfield | 212 | 1,946 | 1,278 |
| Gilpin | 35 | 510 | 390 |
| Grand | 29 | 489 | 396 |
| Gunnison | 174 | 1,311 | 731 |
| Hinsdale | 28 | 149 | 105 |
| Huerfano | 46 | 2,439 | 2,141 |
| Jackson | 10 | 236 | 190 |
| Jefferson | 199 | 2,480 | 2,252 |

FOR ATTORNEY GENERAL—Continued

| COUNTIES | W. P. Collins (Soc.) | Leslie E. Hubbard (Dem.) | William C. Robinson (Rep.-Proh.) |
|------------------|-------------------------|-----------------------------|-------------------------------------|
| Kiowa | 141 | 731 | 741 |
| Kit Carson | 190 | 1,084 | 1,140 |
| Lake | 288 | 1,936 | 1,207 |
| La Plata | 210 | 2,141 | 1,082 |
| Larimer | 574 | 3,254 | 3,449 |
| Las Animas | 250 | 3,986 | 3,256 |
| Lincoln | 132 | 1,209 | 1,333 |
| Logan | 188 | 1,945 | 1,710 |
| Mesa | 775 | 3,039 | 2,800 |
| Mineral | 53 | 236 | 134 |
| Moffat | 42 | 623 | 517 |
| Montzeuma | 98 | 1,183 | 490 |
| Montrose | 300 | 1,889 | 1,507 |
| Morgan | 175 | 1,618 | 1,831 |
| Otero | 219 | 3,233 | 2,841 |
| Ouray | 108 | 760 | 444 |
| Park | 32 | 509 | 385 |
| Phillips | 87 | 514 | 628 |
| Pitkin | 124 | 719 | 300 |
| Prowers | 259 | 1,571 | 1,754 |
| Pueblo | 1,338 | 8,107 | 6,881 |
| Rio Blanco | 23 | 586 | 459 |
| Rio Grande | 63 | 1,231 | 1,097 |
| Routt | 176 | 1,480 | 976 |
| Saguache | 66 | 926 | 693 |
| San Juan | 89 | 526 | 262 |
| San Miguel | 93 | 1,036 | 635 |
| Sedgwick | 75 | 389 | 514 |
| Summit | 56 | 598 | 273 |
| Teller | 377 | 2,779 | 1,852 |

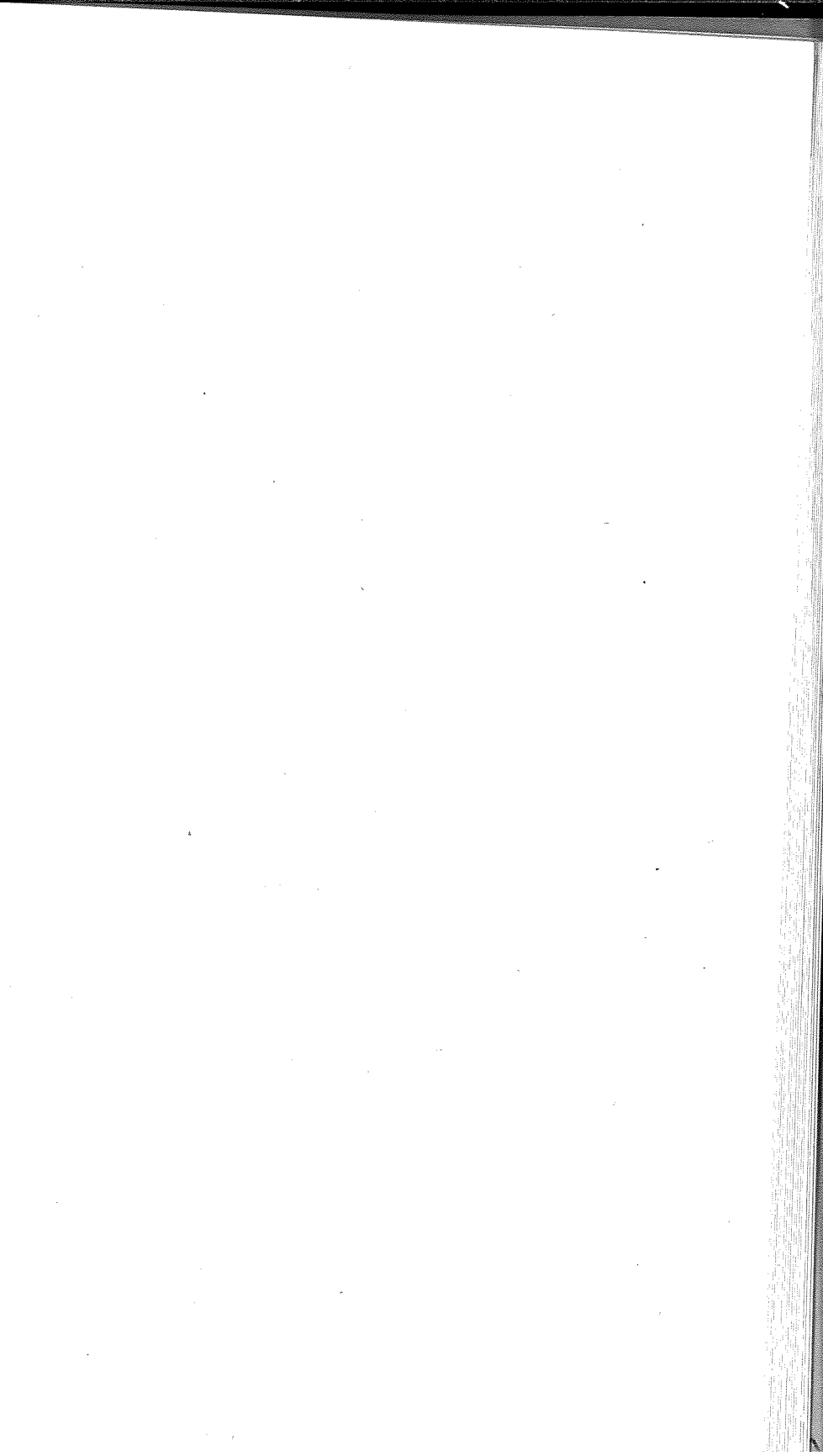
ABSTRACT OF VOTES CAST AT

FOR ATTORNEY GENERAL—Continued

| COUNTIES | W. F. Collins (Soc.) | Leslie E. Hubbard (Dem.) | William C. Robinson (Rep.-Proh.) |
|------------------|-------------------------|-----------------------------|-------------------------------------|
| Washington | 167 | 1,215 | 1,072 |
| Weld | 503 | 6,116 | 6,385 |
| Yuma | 283 | 1,678 | 1,648 |
| | <hr/> | <hr/> | <hr/> |
| | 15,241 | 132,714 | 114,309 |

Scattering, 1 Candidate. Total, 1 Vote.

Hubbard over Robinson, 18,405.



FOR SUPERINTENDENT OF PUBLIC INSTRUCTION

| COUNTIES | Mary E. Hotz Blakeley (Soc.) | Mary C. C. Bradford (Dem.) | Helen M. Wixson (Rep.-Proh.) |
|-------------------|------------------------------------|-------------------------------|---------------------------------|
| Adams | 158 | 1,720 | 1,117 |
| Alamosa | 84 | 979 | 545 |
| Arapahoe | 187 | 2,067 | 1,614 |
| Archuleta | 34 | 626 | 440 |
| Baca | 270 | 923 | 850 |
| Bent | 65 | 1,112 | 953 |
| Boulder | 888 | 5,886 | 4,427 |
| Chaffee | 128 | 1,996 | 967 |
| Cheyenne | 96 | 610 | 624 |
| Clear Creek | 61 | 1,037 | 496 |
| Conejos | 24 | 941 | 874 |
| Costilla | 41 | 913 | 630 |
| Crowley | 78 | 916 | 908 |
| Custer | 49 | 470 | 335 |
| Delta | 380 | 1,988 | 1,941 |
| Denver | 3,350 | 36,865 | 22,541 |
| Dolores | 49 | 209 | 42 |
| Douglas | 33 | 661 | 583 |
| Eagle | 74 | 904 | 465 |
| Elbert | 122 | 959 | 952 |
| El Paso | 829 | 6,503 | 7,535 |
| Fremont | 337 | 2,645 | 2,287 |
| Garfield | 209 | 2,028 | 1,248 |
| Gilpin | 39 | 563 | 377 |
| Gunnison | 170 | 1,349 | 731 |
| Grand | 24 | 525 | 427 |
| Hinsdale | 29 | 146 | 99 |
| Huerfano | 42 | 2,357 | 2,123 |
| Jackson | 8 | 256 | 178 |
| Jefferson | 222 | 2,709 | 2,077 |

FOR SUPERINTENDENT OF PUBLIC INSTRUCTION—Continued

| COUNTIES | Mary E. Hotz Blakeley (Soc.) | Mary C. C. Bradford (Dem.) | Helen M. Wixson (Rep.-Proh.) |
|------------------|------------------------------------|-------------------------------|---------------------------------|
| Kiowa | 126 | 755 | 761 |
| Kit Carson | 193 | 1,112 | 1,185 |
| Lake | 285 | 1,981 | 1,118 |
| La Plata | 218 | 2,099 | 1,121 |
| Larimer | 494 | 3,577 | 3,279 |
| Las Animas | 254 | 4,081 | 3,187 |
| Lincoln | 142 | 1,259 | 1,311 |
| Logan | 179 | 2,059 | 1,652 |
| Mesa | 769 | 3,118 | 2,776 |
| Mineral | 47 | 240 | 131 |
| Moffat | 42 | 677 | 484 |
| Montezuma | 95 | 1,191 | 523 |
| Montrose | 353 | 1,883 | 1,533 |
| Morgan | 170 | 1,739 | 1,781 |
| Otero | 228 | 3,254 | 2,871 |
| Ouray | 92 | 775 | 444 |
| Park | 36 | 522 | 399 |
| Phillips | 97 | 536 | 616 |
| Pitkin | 122 | 772 | 273 |
| Prowers | 266 | 1,732 | 1,655 |
| Pueblo | 1,188 | 8,958 | 6,053 |
| Rio Blanco | 24 | 613 | 448 |
| Rio Grande | 69 | 1,303 | 1,044 |
| Routt | 158 | 1,580 | 937 |
| Saguache | 63 | 944 | 699 |
| San Juan | 100 | 530 | 241 |
| San Miguel | 91 | 1,064 | 674 |
| Sedgwick | 69 | 409 | 516 |
| Summit | 44 | 597 | 285 |
| Teller | 381 | 2,857 | 1,896 |

FOR SUPERINTENDENT OF PUBLIC INSTRUCTION—Continued

| COUNTIES | Mary E. Hotz Blakeley (Soc.) | Mary C. C. Bradford (Dem.) | Helen M. Wixson (Rep.-Proh.) |
|------------------|------------------------------------|-------------------------------|---------------------------------|
| Washington | 167 | 1,291 | 1,053 |
| Weld | 523 | 6,744 | 6,283 |
| Yuma | 279 | 1,719 | 1,695 |
| Total | 15,444 | 142,834 | 107,310 |

Scattering, 1 Candidate. Total, 1 Vote.

Bradford over Wixson, 35,524.



FOR REGENTS OF THE UNIVERSITY OF COLORADO

| COUNTIES | Thomas T. Barnard (Dem.) | William J. King (Rep.) | Grace B. Marians (Soc.) | Edwin A. Miller (Prog.) | Clifford W. Mills (Dem.) | Anna Wolcott Valle (Rep.) | Love Westfall (Soc.) |
|-------------------|-----------------------------|---------------------------|----------------------------|----------------------------|-----------------------------|------------------------------|-------------------------|
| Adams | 1,301 | 1,131 | 152 | 43 | 1,235 | 1,174 | 145 |
| Alamosa | 855 | 591 | 103 | 16 | 781 | 537 | 83 |
| Arapahoe | 1,687 | 1,635 | 204 | 52 | 1,625 | 1,723 | 176 |
| Archuleta | 522 | 456 | 32 | 8 | 521 | 434 | 27 |
| Baca | 825 | 808 | 253 | 11 | 731 | 729 | 210 |
| Bent | 985 | 960 | 66 | 27 | 848 | 895 | 57 |
| Boulder | 4,911 | 4,791 | 710 | 174 | 4,670 | 4,667 | 706 |
| Chaffee | 1,716 | 1,065 | 150 | 25 | 1,585 | 996 | 133 |
| Cheyenne | 516 | 589 | 103 | 24 | 474 | 545 | 90 |
| Clear Creek | 900 | 509 | 62 | 17 | 786 | 536 | 74 |
| Conejos | 776 | 900 | 25 | 19 | 659 | 828 | 17 |
| Costilla | 869 | 617 | 38 | 12 | 839 | 601 | 40 |
| Crowley | 901 | 871 | 79 | 12 | 830 | 833 | 66 |
| Custer | 424 | 343 | 41 | 5 | 391 | 328 | 34 |
| Delta | 1,727 | 1,819 | 390 | 64 | 1,630 | 1,693 | 359 |
| Denver | 27,748 | 23,588 | 3,189 | 1,034 | 29,740 | 28,875 | 3,009 |

ABSTRACT OF VOTES CAST AT

GENERAL ELECTION, TUESDAY, NOV. 7, 1916.

| | | | | | | | |
|------------------|-------|-------|-----|-----|-------|-------|-----|
| Dolores | 171 | 41 | 45 | 1 | 173 | 47 | 43 |
| Douglas | 563 | 596 | 27 | 11 | 514 | 593 | 22 |
| Eagle | 725 | 505 | 76 | 12 | 667 | 474 | 70 |
| Elbert | 817 | 944 | 110 | 25 | 729 | 908 | 98 |
| El Paso | 6,058 | 7,240 | 851 | 329 | 5,520 | 7,209 | 750 |
| Fremont | 2,357 | 2,367 | 334 | 57 | 2,107 | 2,274 | 314 |
| Garfield | 1,661 | 1,250 | 215 | 23 | 1,565 | 1,211 | 199 |
| Gilpin | 474 | 411 | 34 | 12 | 409 | 399 | 33 |
| Grand | 439 | 386 | 32 | 10 | 409 | 372 | 23 |
| Gunnison | 1,134 | 737 | 154 | 19 | 1,124 | 734 | 156 |
| Hinsdale | 134 | 96 | 31 | 1 | 140 | 97 | 26 |
| Huerfano | 2,278 | 2,120 | 45 | 23 | 2,187 | 2,082 | 38 |
| Jackson | 214 | 179 | 7 | 9 | 195 | 165 | 6 |
| Jefferson | 2,164 | 2,202 | 187 | 54 | 2,006 | 2,209 | 190 |
| Kiowa | 692 | 690 | 120 | 21 | 601 | 677 | 112 |
| Kit Carson | 992 | 1,107 | 147 | 35 | 876 | 1,028 | 137 |
| Lake | 1,782 | 1,286 | 264 | 31 | 1,664 | 1,252 | 262 |
| La Plata | 1,959 | 1,022 | 204 | 30 | 1,786 | 1,025 | 184 |
| Larimer | 2,870 | 3,140 | 503 | 164 | 2,814 | 3,102 | 442 |
| Las Animas | 3,648 | 3,497 | 321 | 277 | 3,211 | 3,413 | 213 |
| Lincoln | 1,084 | 1,261 | 129 | 38 | 1,022 | 1,190 | 121 |
| Logan | 1,718 | 1,700 | 173 | 45 | 1,593 | 1,545 | 148 |
| Mesa | 2,731 | 2,454 | 708 | 127 | 2,571 | 2,345 | 720 |
| Mineral | 204 | 158 | 45 | 6 | 185 | 142 | 43 |

FOR REGENTS OF THE UNIVERSITY OF COLORADO—Continued

| COUNTIES | Thomas T. Barnard (Dem.) | William J. King (Rep.) | Grace B. Marians (Soc.) | Edwin A. Miller (Prog.) | Clifford W. Mills (Dem.) | Anna Wolcott Valle (Rep.) | Love Westfall (Soc.) |
|------------------|-----------------------------|---------------------------|----------------------------|----------------------------|-----------------------------|------------------------------|-------------------------|
| Moffat | 560 | 525 | 47 | 8 | 511 | 510 | 41 |
| Montezuma | 1,082 | 476 | 82 | 19 | 979 | 455 | 77 |
| Montrose | 1,824 | 1,475 | 323 | 47 | 1,666 | 1,397 | 301 |
| Morgan | 1,452 | 1,678 | 157 | 39 | 1,298 | 1,684 | 133 |
| Otero | 3,087 | 2,738 | 215 | 67 | 2,818 | 2,575 | 185 |
| Ouray | 674 | 448 | 80 | 14 | 639 | 429 | 81 |
| Park | 442 | 406 | 41 | 15 | 416 | 389 | 29 |
| Phillips | 463 | 566 | 80 | 16 | 432 | 528 | 75 |
| Pitkin | 615 | 287 | 119 | 8 | 585 | 303 | 120 |
| Prowers | 1,468 | 1,669 | 252 | 62 | 1,296 | 1,496 | 219 |
| Pueblo | 7,824 | 6,117 | 1,222 | 254 | 7,842 | 6,326 | 1,334 |
| Rio Blanco | 533 | 449 | 26 | 8 | 495 | 416 | 19 |
| Rio Grande | 1,132 | 1,026 | 68 | 17 | 990 | 1,002 | 53 |
| Routt | 1,331 | 1,011 | 154 | 25 | 1,217 | 979 | 144 |
| Saguache | 801 | 841 | 61 | 24 | 699 | 696 | 51 |
| San Juan | 466 | 242 | 95 | 12 | 446 | 252 | 90 |

ABSTRACT OF VOTES CAST AT

| | | | | | | | |
|---|----------------|----------------|---------------|--------------|----------------|----------------|---------------|
| San Miguel | 903 | 686 | 89 | 9 | 901 | 662 | 84 |
| Sedgwick | 324 | 508 | 71 | 14 | 301 | 484 | 58 |
| Summit | 545 | 288 | 41 | 9 | 517 | 267 | 41 |
| Teller | 2,945 | 1,844 | 359 | 72 | 2,270 | 1,787 | 336 |
| Washington | 1,032 | 1,057 | 144 | 30 | 901 | 962 | 120 |
| Weld | 5,874 | 6,042 | 471 | 248 | 5,299 | 6,000 | 467 |
| Yuma | 1,474 | 1,549 | 269 | 33 | 1,359 | 1,470 | 249 |
| | <u>120,383</u> | <u>107,990</u> | <u>14,825</u> | <u>3,953</u> | <u>115,290</u> | <u>110,956</u> | <u>13,883</u> |
| Scattering, 1 Candidate. Total, 1 Vote. | | | | | | | |
| Barnard over Vaile | | | | | | 9,427 | |
| Mills over Valle | | | | | | 4,334 | |

ABSTRACT OF VOTES CAST AT

**FOR DISTRICT JUDGE SECOND JUDICIAL DISTRICT
(To Fill Vacancy)**

| | |
|--|--------|
| Alden C. Galland, Socialist | 2,550 |
| Orrin N. Hilton, Independent-Liberal-Progressive | 14,549 |
| John I. Mullins, Democrat | 23,231 |
| Greeley W. Whitford, Republican | 21,443 |

Mullins over Whitford, 1,788.

**FOR DISTRICT JUDGE THIRD JUDICIAL DISTRICT
(To Fill Vacancy)**

| COUNTIES | Granby Hillyer (Rep.) | A. C. McChesney (Dem.) |
|------------------|--------------------------|---------------------------|
| Baca | 1,081 | 894 |
| Bent | 1,183 | 1,039 |
| Huerfano | 2,155 | 2,375 |
| Las Animas | 3,052 | 4,745 |
| Prowers | 2,098 | 1,663 |
| | <hr/> | <hr/> |
| | 9,569 | 10,716 |

Scattering, 1 Candidate. Total, 1 Vote.

McChesney over Hillyer, 1,147.

FOR DISTRICT JUDGE ELEVENTH JUDICIAL DISTRICT
(To Fill Vacancy)

| COUNTIES | James L. Cooper (Rep.) | George H. Wilkes (Dem.) |
|---------------|---------------------------|----------------------------|
| Chaffee | 1,513 | 1,566 |
| Custer | 459 | 444 |
| Fremont | 3,591 | 1,786 |
| Park | 526 | 448 |
| | 6,089 | 4,244 |

Cooper over Wilkes, 1,845.