

STATE OF COLORADO

# Abstract of Votes Cast

AT THE

## Primary Election

Held on the Twelfth Day of September,  
A. D. 1916

AND AT THE

## General Election

Held on the Seventh Day of November,  
A. D. 1916

FOR

Presidential Electors, Congressmen, and State,  
Legislative and District Officers

ALSO THE

Proposed Constitutional Amendments  
Initiated and Referred Bills

COMPILED FROM OFFICIAL RETURNS

BY

JAMES R. NOLAND  
Secretary of State

1916



DENVER, COLORADO  
THE C. F. HOECKEL BLANK BOOK AND LITHOGRAPHING CO.  
1916

**FOR**  
**REPRESENTATIVES IN THE TWENTY-FIRST GENERAL ASSEMBLY**  
**FROM THE COUNTIES OF ROUTT AND MOFFAT**

COUNTIES	George W. Smith (Rep.)	M. H. Smith (Dem.)
Routt .....	1,523	1,138
Moffatt .....	744	503
	2,267	1,641

George W. Smith's majority 626

**FOR**  
**REPRESENTATIVES IN THE TWENTY-FIRST GENERAL ASSEMBLY**  
**FROM THE COUNTIES OF SAGUACHE AND CUSTER**

COUNTIES	Carl L. Marold (Dem.)	John T. McNeely (Rep.)
Saguache .....	1,070	710
Custer .....	449	465
	1,519	1,175

Marold's majority 344

**FOR  
REPRESENTATIVES IN THE TWENTY-FIRST GENERAL ASSEMBLY  
FROM THE COUNTY OF SAN JUAN**

COUNTY	E. J. Holman (Rep.)	Metz Rodgers (Dem.)
San Juan .....	385	516
Rodgers' majority 131		

**FOR  
REPRESENTATIVES IN THE TWENTY-FIRST GENERAL ASSEMBLY  
FROM THE COUNTY OF SAN MIGUEL**

COUNTY	J. W. S. Cross (Rep.)	W. H. Doyle (Dem.)
San Miguel .....	1,410	512
Cross' majority 898		

**FOR  
REPRESENTATIVES IN THE TWENTY-FIRST GENERAL ASSEMBLY  
FROM THE COUNTIES OF SUMMIT, GRAND AND JACKSON**

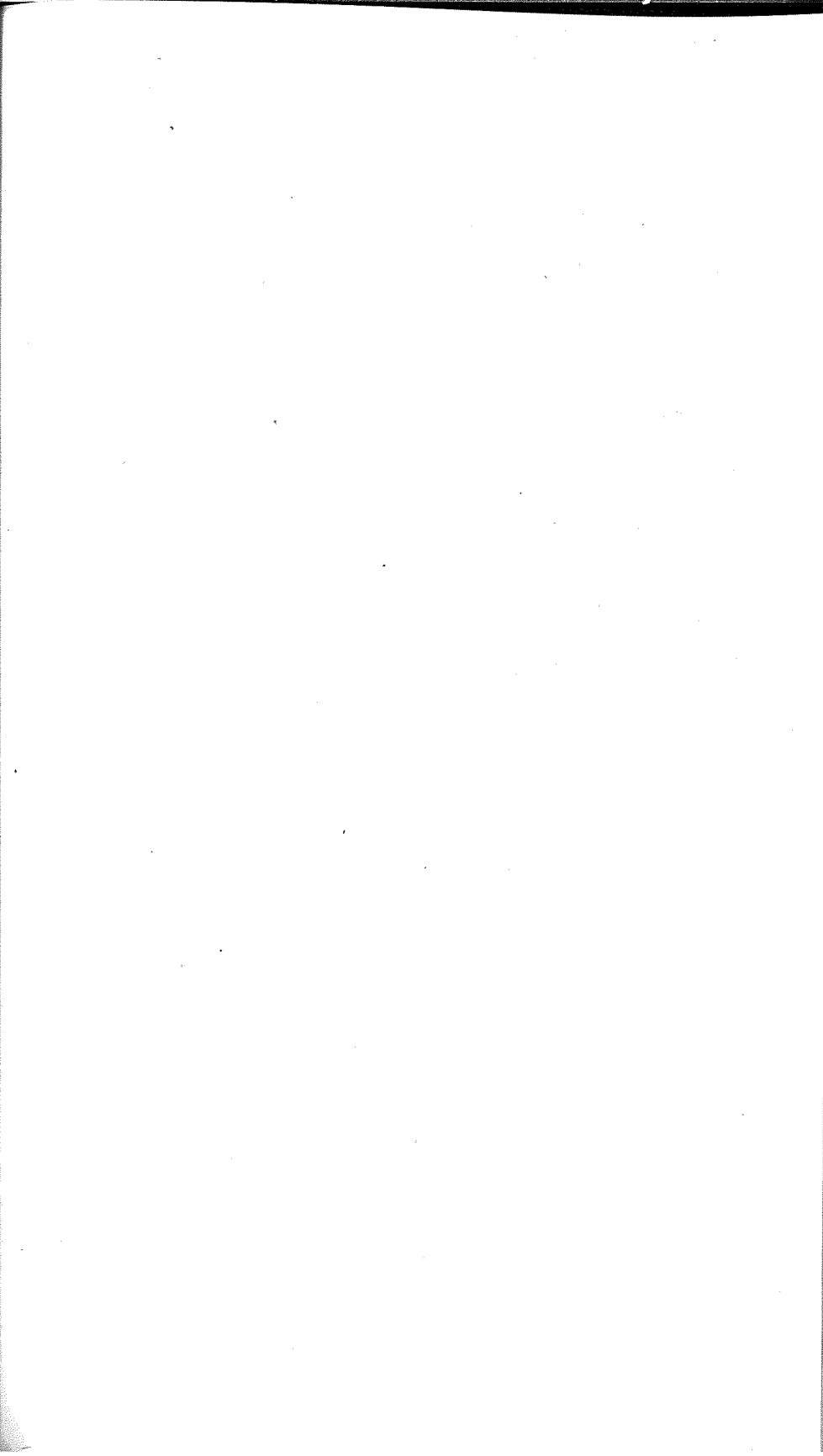
COUNTIES	Frank W. Murphy (Rep.)	A. E. Wilkins (Dem.)
Summit .....	444	492
Grand .....	640	442
Jackson .....	238	251
	1,322	1,185
Murphy's majority 187		

**FOR  
REPRESENTATIVES IN THE TWENTY-FIRST GENERAL ASSEMBLY  
FROM THE COUNTIES OF TELLER AND PARK**

COUNTIES	G. R. Freeman (Soc.)	George M. Harris (Dem.)	John Ifinger (Dem.)	Henry P. Nagel, Jr. (Rep.)	W. L. Shockey (Rep.)	Ernest I. Zimmerman (Soc.)
Teller .....	343	2,036	2,146	2,548	2,705	398
Park .....	38	475	495	417	367	41
	381	2,511	2,641	2,965	3,072	439
Shockey over Ifinger .....					431	
Nagel over Ifinger .....					324	

**FOR  
REPRESENTATIVES IN THE TWENTY-FIRST GENERAL ASSEMBLY  
FROM THE COUNTY OF WELD**

COUNTY	William K. Gilcrest (Rep.)	C. R. Graves (Rep.)	A. F. Hart (Dem.)	Evert H. Houtchens (Dem.)
Weld .....	5,860	6,454	5,830	5,925
Graves over Gilcrest .....				594
Houtchens over Gilcrest .....				65



## FOR PRESIDENTIAL ELECTORS

COUNTIES	John C. Bell (Dem.)	Peter Krier (Dem.)	Thomas E. Munson (Dem.)	William E. Sweet (Dem.)	Sarah K. Walling (Dem.)	Charles H. S. Whipple (Dem.)
Adams .....	2,112	2,105	2,120	2,112	2,113	2,088
Alamosa .....	1,309	1,308	1,308	1,307	1,301	1,275
Arapahoe .....	2,662	2,636	2,652	2,635	2,637	2,634
Archuleta .....	825	818	830	806	807	802
Baca .....	1,266	1,256	1,294	1,259	1,261	1,262
Bent .....	1,482	1,468	1,473	1,471	1,465	1,463
Boulder .....	7,443	7,413	7,419	7,406	7,410	7,381
Chaffee .....	2,515	2,513	2,546	2,516	2,524	2,508
Cheyenne .....	797	794	802	793	795	797
Clear Creek ....	1,291	1,287	1,289	1,286	1,285	1,278
Conejos .....	1,731	1,712	1,721	1,711	1,710	1,703
Costilla .....	1,053	1,024	1,028	1,020	1,022	1,009
Crowley .....	1,160	1,155	1,160	1,152	1,158	1,154
Custer .....	537	530	529	533	530	532
Delta .....	2,824	2,825	2,817	2,810	2,811	2,804
Denver .....	42,849	42,849	43,029	42,884	42,860	42,538
Delores .....	254	250	251	252	249	250
Douglas .....	815	811	820	813	810	804
Eagle .....	1,129	1,125	1,136	1,127	1,120	1,136
Elbert .....	1,218	1,221	1,230	1,218	1,217	1,203
El Paso .....	8,336	8,326	8,381	8,307	8,310	8,316
Fremont .....	3,356	3,351	3,395	3,357	3,351	3,342
Garfield .....	2,484	2,474	2,479	2,461	2,462	2,450
Gilpin .....	739	745	763	746	752	743
Grand .....	624	622	624	619	620	618
Gunnison .....	1,617	1,609	1,618	1,611	1,609	1,609
Hinsdale .....	179	177	178	177	177	178
Huerfano .....	2,569	2,563	2,632	2,550	2,558	2,551
Jackson .....	334	329	331	330	330	332
Jefferson .....	3,246	3,282	3,368	3,245	3,291	3,218
Kiowa .....	862	866	936	870	876	901
Kit Carson ....	1,539	1,526	1,571	1,524	1,522	1,532
Lake .....	2,587	2,573	2,672	2,563	2,578	2,640

## FOR PRESIDENTIAL ELECTORS—Continued

COUNTIES	John C. Bell (Dem.)	Peter Krier (Dem.)	Thomas E. Munson (Dem.)	William E. Sweet (Dem.)	Sarah K. Walling (Dem.)	Charles H. S. Whipple (Dem.)
La Plata .....	2,605	2,606	2,590	2,579	2,579	2,571
Larimer .....	4,552	4,547	4,868	4,556	4,647	4,575
Las Animas ....	5,322	5,289	5,300	5,279	5,265	5,242
Lincoln .....	1,693	1,677	1,702	1,678	1,681	1,672
Logan .....	2,646	2,660	2,679	2,628	2,643	2,652
Mesa .....	4,409	4,389	4,394	4,371	4,368	4,340
Mineral .....	274	276	278	273	274	272
Moffat .....	736	738	740	736	735	731
Montezuma .....	1,453	1,443	1,458	1,444	1,446	1,450
Montrose .....	2,594	2,570	2,571	2,565	2,560	2,526
Morgan .....	2,390	2,368	2,371	2,367	2,369	2,366
Otero .....	3,975	3,961	3,963	3,955	3,948	3,945
Ouray .....	971	958	961	957	957	952
Park .....	668	668	674	665	666	662
Phillips .....	782	782	795	783	785	777
Pitkin .....	896	935	915	895	900	916
Prowers .....	2,151	2,144	2,168	2,153	2,155	2,128
Pueblo .....	10,445	10,428	10,710	10,451	10,492	10,461
Rio Blanco .....	698	692	702	690	690	689
Rio Grande ....	1,746	1,749	1,756	1,743	1,746	1,738
Routt .....	1,959	1,964	1,972	1,957	1,963	1,947
Saguache .....	1,250	1,238	1,254	1,241	1,244	1,229
San Juan .....	691	685	693	688	686	685
San Miguel .....	1,311	1,311	1,325	1,316	1,319	1,293
Sedgwick .....	520	516	519	514	517	512
Summit .....	716	713	717	714	714	717
Teller .....	3,512	3,574	3,515	3,493	3,535	3,498
Washington ....	1,752	1,738	1,748	1,736	1,737	1,739
Weld .....	8,588	8,550	8,600	8,535	8,532	8,529
Yuma .....	2,447	2,437	2,466	2,437	2,436	2,436
	<hr/>	<hr/>	<hr/>	<hr/>	<hr/>	<hr/>
	177,496	177,149	178,816	176,867	177,110	176,301

## FOR PRESIDENTIAL ELECTORS—Continued

COUNTIES	Charles Boettcher (Rep.)	David R. C. Brown (Rep.)	C. W. Crews (Rep.)	Bruce G. Eaton (Rep.)	Lawrence C. Phipps (Rep.)	William F. Slocum (Rep.)
Adams .....	1,161	1,155	1,165	1,157	1,155	1,149
Alamosa .....	491	489	488	485	488	488
Arapahoe .....	1,437	1,443	1,443	1,441	1,446	1,441
Archuleta .....	456	468	473	470	474	475
Baca .....	830	819	826	810	810	816
Bent .....	843	837	833	834	834	831
Boulder .....	4,004	3,999	3,986	3,993	3,992	3,982
Chaffee .....	856	853	864	844	849	848
Cheyenne .....	556	555	558	551	549	554
Clear Creek .....	477	474	474	474	473	475
Conejos .....	917	919	928	926	923	919
Costilla .....	568	594	579	577	577	573
Crowley .....	806	827	847	822	825	819
Custer .....	398	400	403	402	401	397
Delta .....	1,606	1,613	1,612	1,602	1,608	1,601
Denver .....	22,931	23,029	23,185	23,012	23,108	22,936
Dolores .....	48	46	46	44	46	45
Douglas .....	596	592	612	594	597	596
Eagle .....	388	394	397	397	392	396
Elbert .....	934	947	951	940	946	939
El Paso .....	7,091	7,077	7,159	7,090	7,087	7,132
Fremont .....	2,227	2,228	2,257	2,226	2,225	2,222
Garfield .....	1,137	1,135	1,139	1,130	1,132	1,129
Gilpin .....	394	400	407	398	402	398
Grand .....	379	378	378	375	376	372
Gunnison .....	730	721	736	724	723	725
Hinsdale .....	93	91	94	90	90	92
Huerfano .....	1,976	1,946	2,027	1,940	1,929	1,990
Jackson .....	158	158	157	158	156	153
Jefferson .....	2,012	2,012	2,040	1,997	2,010	1,957
Kiowa .....	666	661	723	675	664	715
Kit Carson .....	1,008	990	1,030	992	987	993
Lake .....	963	946	993	939	946	984



## FOR PRESIDENTIAL ELECTORS—Continued

COUNTIES	Charles Boettcher (Rep.)	David R. C. Brown (Rep.)	C. W. Crews (Rep.)	Bruce G. Eaton (Rep.)	Lawrence C. Phipps (Rep.)	William F. Slocum (Rep.)
La Plata .....	1,043	1,032	1,029	1,023	1,028	1,027
Larimer .....	2,733	2,700	2,797	2,722	2,733	2,752
Las Animas ....	3,551	3,510	3,511	3,500	3,511	3,478
Lincoln .....	1,126	1,124	1,129	1,121	1,125	1,122
Logan .....	1,425	1,433	1,422	1,422	1,422	1,421
Mesa .....	2,229	2,227	2,223	2,216	2,221	2,209
Mineral .....	132	135	135	133	136	132
Moffat .....	514	511	512	509	510	507
Montezuma ....	417	419	425	412	412	412
Montrose .....	1,303	1,316	1,315	1,311	1,309	1,296
Morgan .....	1,544	1,538	1,541	1,524	1,535	1,536
Otero .....	2,684	2,673	2,678	2,669	2,669	2,656
Ouray .....	400	397	399	398	400	396
Park .....	370	371	372	371	372	374
Phillips .....	530	529	532	530	530	532
Pitkin .....	263	281	263	260	264	272
Prowers .....	1,669	1,676	1,683	1,664	1,674	1,652
Pueblo .....	6,336	6,331	6,545	6,361	6,339	6,468
Rio Blanco .....	466	467	468	465	466	467
Rio Grande .....	887	889	886	882	879	871
Routt .....	839	844	849	839	846	835
Saguache .....	676	676	681	676	675	674
San Juan .....	216	212	214	211	213	212
San Miguel .....	586	571	578	571	574	567
Sedgwick .....	522	532	529	528	527	527
Summit .....	265	265	268	266	266	264
Teller .....	1,698	1,707	1,693	1,681	1,690	1,670
Washington ....	998	984	989	981	988	985
Weld .....	5,397	5,383	5,395	5,398	5,381	5,370
Yuma .....	1,432	1,417	1,436	1,418	1,418	1,424
	<hr/>	<hr/>	<hr/>	<hr/>	<hr/>	<hr/>
	101,388	101,346	102,308	101,171	101,333	101,250

Wilson over Hughes, 76,508

## FOR PRESIDENTIAL ELECTORS—Continued

COUNTIES	Ruth De Long Avery (Prog.)	D. C. Burns (Prog.)	James H. Causey (Prog.)	Hattie K. Howard (Prog.)	Robert Kerr (Prog.)	L. G. Kurtz (Prog.)
Adams .....	3	2	4	4	2	2
Alamosa .....	2	.....	.....	1	1	.....
Arapahoe .....	19	6	6	6	6	5
Archuleta .....	8	5	3	2	4	4
Baca .....	6	2	1	4	3	1
Bent .....	3	2	3	6	3	6
Boulder .....	21	5	5	8	8	5
Chaffee .....	4	4	4	.....	1	.....
Cheyenne .....	2	3	4	2	3	3
Clear Creek ....	3	1	1	3	1	1
Conejos .....	11	8	8	12	5	5
Costilla .....	30	38	14	18	14	13
Crowley .....	6	7	5	4	3	4
Custer .....	2	6	5	5	7	3
Delta .....	5	5	4	4	4	7
Denver .....	63	75	65	53	41	44
Dolores .....	.....	1	1	.....	.....	.....
Douglas .....	1	1	2	2	1	1
Eagle .....	.....	1	.....	.....	.....	.....
Elbert .....	9	3	3	2	3	2
El Paso .....	24	14	11	16	22	10
Fremont .....	1	3	2	2	2	1
Garfield .....	.....	1	2	1	1	.....
Gilpin .....	1	.....	2	1	.....	.....
Grand .....	1	.....	.....	.....	.....	.....
Gunnison .....	2	3	2	2	4	1
Hinsdale .....	.....	.....	.....	.....	.....	.....
Huerfano .....	12	9	3	3	4	10
Jackson .....	.....	.....	.....	.....	.....	.....
Jefferson .....	6	6	6	8	4	4
Kiowa .....	6	2	2	2	2	2
Kit Carson .....	1	3	3	4	1	1
Lake .....	7	5	3	8	3	4

## FOR PRESIDENTIAL ELECTORS—Continued

COUNTIES	Ruth De Long Avery (Prog.)	D. C. Burns (Prog.)	James H. Causey (Prog.)	Hattie K. Howard (Prog.)	Robert Kerr (Prog.)	L. G. Kurtz (Prog.)
La Plata .....	3	1	3	3	.....	.....
Larimer .....	7	3	11	12	3	2
Las Animas ....	41	39	25	19	22	15
Lincoln .....	4	3	7	5	5	4
Logan .....	8	7	6	8	7	4
Mesa .....	3	2	3	2	2	1
Mineral .....		1	.....	.....	.....	.....
Moffat .....	2	.....	.....	1	.....	.....
Montezuma .....		2	.....	4	3	1
Montrose .....	1	3	1	1	3	1
Morgan .....	4	4	3	2	2	3
Otero .....	12	8	7	5	6	5
Ouray .....	2	1	.....	1	1	.....
Park .....	3	3	3	3	3	3
Phillips .....	2	4	2	2	1	2
Pitkin .....	2	2	2	1	3	.....
Prowers .....	2	3	2	4	4	.....
Pueblo .....	18	15	5	8	11	18
Rio Blanco .....		.....	.....	.....	.....	1
Rio Grande ....	2	.....	1	.....	.....	.....
Routt .....	1	1	4	2	1	1
Saguache .....	4	3	3	3	6	3
San Juan .....	2	2	3	3	1	1
San Miguel .....	3	2	.....	4	.....	1
Sedgwick .....	6	3	4	2	3	2
Summit .....		.....	.....	.....	.....	.....
Teller .....	5	3	5	10	6	1
Washington ....	3	2	.....	2	.....	.....
Weld .....	6	10	3	8	6	14
Yuma .....	4	4	7	9	7	6
	409	352	284	307	259	228

## FOR PRESIDENTIAL ELECTORS—Continued

COUNTIES	J. A. Cochran (Prob.)	S. H. Pollock (Prob.)	Otto A. Reinhardt (Prob.)	P. A. Rice (Prob.)	Fred White (Prob.)	Edgar Wilkinson (Prob.)
Adams .....	21	20	20	21	20	22
Alamosa .....	4	4	4	4	5	4
Arapahoe .....	12	14	11	9	14	13
Archuleta .....	3	3	2	2	2	5
Baca .....	24	23	23	24	24	23
Bent .....	30	29	29	27	29	29
Boulder .....	163	155	158	152	163	156
Chaffee .....	21	22	20	21	22	21
Cheyenne .....	10	11	9	9	9	10
Clear Creek ....	1	1	4	1	2	2
Conejos .....	5	4	4	3	4	4
Costilla .....	9	8	10	6	9	9
Crowley .....	29	29	30	28	28	27
Custer .....	5	5	4	2	4	5
Delta .....	61	61	61	59	60	63
Denver .....	409	412	416	406	410	394
Dolores .....		1	.....	.....	.....	.....
Douglas .....	5	5	3	3	3	4
Eagle .....	7	5	5	5	5	8
Elbert .....	19	19	21	20	21	19
El Paso .....	321	315	324	315	322	314
Fremont .....	69	71	67	67	69	68
Garfield .....	36	35	36	35	35	34
Gilpin .....	5	6	5	6	6	5
Grand .....	3	2	2	2	2	2
Gunnison .....	11	8	9	8	9	10
Hinsdale .....	1	1	1	1	1	1
Huerfano .....	31	20	24	20	21	51
Jackson .....	4	5	4	4	5	4
Jefferson .....	21	23	26	21	24	21
Kiowa .....	21	20	27	28	19	29
Kit Carson .....	30	30	34	27	28	29

## FOR PRESIDENTIAL ELECTORS—Continued

COUNTIES	J. A. Cochran (Prob.)	S. H. Pollock (Prob.)	Otto A. Reinhardt (Prob.)	F. A. Rice (Prob.)	Fred White (Prob.)	Edgar Wilkinson (Prob.)
Lake .....	190	191	196	191	192	195
La Plata .....	21	22	19	17	17	17
Larimer .....	94	89	94	86	88	89
Las Animas ....	43	39	39	39	39	43
Lincoln .....	32	31	32	31	32	32
Logan .....	23	19	23	21	21	18
Mesa .....	231	220	217	222	217	217
Mineral .....	2	2	2	2	2	3
Moffat .....	4	4	3	3	3	2
Montezuma .....	9	6	6	7	6	7
Montrose .....	40	31	33	32	34	31
Morgan .....	29	25	24	23	23	24
Otero .....	104	104	99	99	100	101
Ouray .....	3	2	1	4	1	1
Park .....	2	2	2	2	2	3
Phillips .....	9	6	5	5	4	6
Pitkin .....	3	3	5	3	3	3
Prowers .....	61	61	64	61	61	60
Pueblo .....	137	140	143	135	134	130
Rio Blanco .....	4	3	3	3	4	4
Rio Grande .....	26	24	23	23	23	23
Routt .....	16	14	18	14	16	12
Saguache .....	5	6	4	4	6	3
San Juan .....	7	7	7	8	7	7
San Miguel .....	7	9	11	8	9	8
Sedwick .....	8	8	6	6	8	6
Summitt .....	7	6	6	6	6	6
Teller .....	17	18	17	17	20	20
Washington ....	29	27	30	28	27	29
Weld .....	208	208	207	203	200	207
Yuma .....	31	30	31	30	31	30
	<hr/>	<hr/>	<hr/>	<hr/>	<hr/>	<hr/>
	2,793	2,724	2,763	2,669	2,711	2,723

## FOR PRESIDENTIAL ELECTORS—Continued

COUNTIES	May Charette (Soc.)	Mary L. Geffs (Soc.)	Abraham Marians (Soc.)	Charles E. Morrisson (Soc.)	Chas. Fush (Soc.)	Garnett Underhill (Soc.)
Adams .....	125	121	125	121	122	121
Alamosa .....	66	66	64	66	65	64
Arapahoe .....	123	125	129	126	124	125
Archuleta .....	10	11	11	10	11	12
Baca .....	207	205	208	204	206	205
Bent .....	54	56	55	55	55	56
Boulder .....	480	483	482	478	480	480
Chaffee .....	79	78	78	77	80	75
Cheyenne .....	81	81	82	80	80	81
Clear Creek ....	32	33	32	32	32	33
Conejos .....	7	7	6	7	7	8
Costilla .....	24	24	25	28	29	27
Crowley .....	52	53	51	51	53	48
Custer .....	35	34	35	34	34	33
Delta .....	285	286	282	287	288	285
Denver .....	1,810	1,815	1,826	1,813	1,807	1,799
Dolores .....	30	30	30	29	31	30
Douglas .....	13	13	13	12	12	12
Eagle .....	37	34	36	35	37	35
Elbert .....	85	88	90	89	88	86
El Paso .....	550	546	552	544	547	552
Fremont .....	240	240	243	241	239	242
Garfield .....	160	158	161	157	157	157
Gilpin .....	15	15	15	16	15	15
Grand .....	12	12	11	11	11	11
Gunnison .....	116	115	115	114	115	116
Hinsdale .....	29	29	29	29	29	29
Huerfano .....	22	26	25	27	24	32
Jackson .....	5	5	5	5	5	5
Jefferson .....	135	141	139	143	147	144
Kiowa .....	130	131	141	141	132	147
Kit Carson ....	147	141	147	143	142	144
Lake .....	34	31	38	30	39	36

## FOR PRESIDENTIAL ELECTORS—Continued

COUNTIES	May Charette (Soc.)	Mary L. Geffs (Soc.)	Abraham Marians (Soc.)	Charles E. Morrisson (Soc.)	Chas. Rush (Soc.)	Garnett Underhill (Soc.)
La Plata .....	158	160	158	157	155	157
Larimer .....	383	376	417	380	392	387
Las Animas ....	156	151	152	154	150	148
Lincoln .....	121	118	119	119	119	121
Logan .....	112	116	111	110	115	113
Mesa .....	541	535	544	540	544	539
Mineral .....	46	48	48	48	47	46
Moffat .....	31	31	31	31	31	31
Montezuma .....	75	75	76	72	73	74
Montrose .....	252	252	252	251	251	250
Morgan .....	117	116	111	111	117	114
Otero .....	171	167	167	167	167	165
Ouray .....	56	57	56	58	57	57
Park .....	28	28	28	28	28	29
Phillips .....	56	56	56	58	57	58
Pitkin .....	100	105	100	101	99	102
Prowers .....	238	239	244	247	244	236
Pueblo .....	706	705	731	704	707	717
Rio Blanco .....	10	12	12	9	12	11
Rio Grande .....	49	45	47	45	47	45
Routt .....	115	114	114	116	114	113
Saguache .....	46	46	46	46	45	47
San Juan .....	73	73	74	74	74	72
San Miguel .....	69	70	71	69	69	69
Sedgwick .....	68	67	67	68	68	66
Summit .....	28	28	28	28	30	28
Teller .....	235	239	231	232	235	232
Washington .....	131	129	129	131	128	131
Weld .....	327	332	324	325	331	311
Yuma .....	223	219	224	219	221	220
	9,951	9,942	10,049	9,933	9,970	9,933

**FOR  
REPRESENTATIVES IN THE SIXTY-FIFTH CONGRESS,  
FOR FIRST CONGRESSIONAL DISTRICT**

(City and County of Denver)

Charles A. Ahlstrom, Socialist.....	2,551
Benjamin C. Hilliard, Democrat.....	30,146
George J. Kindel, Liberal.....	3,306
William N. Vaile, Republican.....	26,121

Hilliard over Vaile, 4,025

**FOR  
REPRESENTATIVES IN THE SIXTY-FIFTH CONGRESS,  
FOR SECOND CONGRESSIONAL DISTRICT**

COUNTIES	Ralph R. Drennen (Prog.)	J. Edward Johnson (Soc.)	R. E. Jones (Dem.)	Charles B. Timberlake (Rep.)
Adams .....	19	137	1,284	1,473
Arapahoe .....	14	180	1,557	1,780
Boulder .....	62	657	4,924	5,286
Cheyenne .....	16	94	451	721
Douglas .....	4	25	540	661
Elbert .....	10	95	688	1,022
El Paso .....	100	769	5,297	8,647
Kit Carson .....	30	161	779	1,435
Larimer .....	41	493	2,586	3,959
Lincoln .....	12	103	847	1,403
Logan .....	25	132	1,156	2,699
Morgan .....	66	128	1,507	1,983
Phillips .....	7	78	407	777
Sedgwick .....	7	72	310	597
Washington .....	17	135	719	1,477
Weld .....	65	391	5,016	6,651
Yuma .....	18	234	1,266	2,094
	513	3,884	29,334	42,665

Timberlake over Jones, 13,331.



**FOR  
REPRESENTATIVES IN THE SIXTY-FIFTH CONGRESS,  
FOR THIRD CONGRESSIONAL DISTRICT**

COUNTIES	William G. Francis (Prog.)	Edward Keating (Dem.)	Geo. E. McClelland (Rep.)	David McGrew (Soc.)	William H. Steele (Soc.-Lab.)
Alamosa .....	4	908	582	49	4
Baca .....	12	1,067	732	174	19
Bent .....	14	1,226	869	41	7
Clear Creek .....	4	699	903	26	3
Conejos .....	13	873	894	13	7
Costilla .....	14	844	539	30	6
Crowley .....	7	948	814	38	14
Custer .....	5	469	340	24	5
Fremont .....	26	2,865	2,165	193	17
Gilpin .....	5	504	464	17	5
Huerfano .....	27	2,304	1,959	23	8
Jefferson .....	49	2,560	2,151	139	33
Kiowa .....	14	849	630	93	15
Las Animas .....	32	4,209	3,079	131	21
Mineral .....	2	223	142	29	2
Otero .....	40	3,253	2,813	167	24
Park .....	3	541	383	23	3
Prowers .....	38	1,694	1,551	171	30
Pueblo .....	91	8,883	6,597	844	157
Rio Grande .....	9	1,318	1,002	37	2
Saguache .....	7	933	656	34	3
Teller .....	27	3,013	1,872	196	40
	443	40,183	31,137	2,492	425

Scattering, 2 Candidates. Total, 3 Votes.

Keating over McClelland, 9,046

## ABSTRACT OF VOTES CAST AT

**FOR  
REPRESENTATIVES IN THE SIXTY-FIFTH CONGRESS,  
FOR FOURTH CONGRESSIONAL DISTRICT**

COUNTIES	Henry J. Baird (Rep.)	Emery D. Cox. (Soc.)	Edward T. Taylor (Dem.)
Archuleta .....	391	27	656
Chaffee .....	867	92	2,015
Delta .....	1,380	344	2,650
Dolores .....	40	36	227
Eagle .....	352	57	1,016
Garfield .....	917	154	2,468
Grand .....	348	17	552
Gunnison .....	622	134	1,434
Hinsdale .....	84	24	167
Jackson .....	130	5	301
Lake .....	1,080	221	2,181
La Plata .....	869	143	2,374
Mesa .....	1,782	629	4,057
Moffat .....	397	29	772
Montezuma .....	412	74	1,247
Montrose .....	1,044	246	2,408
Ouray .....	379	72	838
Pitkin .....	215	93	843
Rio Blanco .....	356	12	702
Routt .....	839	108	1,662
San Juan .....	202	73	597
San Miguel .....	455	67	1,110
Summit .....	236	38	649
	13,397	2,695	30,926

Taylor over Baird, 17,529



ABSTRACT OF VOTES CAST AT  
FOR JUDGES OF SUPREME COURT  
(For the Term of Ten Years)

COUNTIES	George W. Allen (Rep.)	Morton S. Bailey (Dem.)	William H. Gabbert (Rep.)	Robert Kerr * (Prog.)	Channing Sweet (Soc.)	Samuel N. Wheeler (Dem.)
Adams	1,179	1,368	1,021	32	169	1,312
Alamosa	554	928	503	18	87	703
Arapahoe	1,729	1,767	1,476	47	203	1,398
Archuleta	446	544	402	21	40	529
Baca	825	835	724	30	249	637
Bent	940	1,013	872	23	56	789
Boulder	4,395	5,600	4,331	173	726	4,777
Chaffee	1,019	1,886	934	30	143	1,637
Cheyenne	599	557	521	24	100	469
Clear Creek	578	869	520	21	60	742
Conejos	838	849	741	17	23	620
Costilla	551	807	505	12	34	749
Crowley	823	877	796	27	68	784
Custer	314	496	320	7	37	341
Delta	1,765	1,874	1,704	85	405	1,746
Denver	28,799	32,777	25,407	886	3,336	24,760
Dolores	56	180	41	6	43	179
Douglas	619	551	565	10	33	497
Eagle	526	757	466	10	76	708
Elbert	940	795	781	40	106	642
El Paso	6,887	6,390	6,793	1,229	875	5,477
Fremont	2,022	2,942	2,071	80	329	1,933
Garfield	1,321	1,717	1,069	32	235	1,778
Gilpin	385	480	362	9	37	415
Grand	440	441	356	10	26	405
Gunnison	820	1,154	662	23	170	1,178
Hinsdale	115	128	96	1	30	143
Huerfano	1,930	2,324	1,904	27	47	1,996
Jackson	187	215	161	4	5	187
Jefferson	2,179	2,465	2,094	60	200	1,781

**FOR JUDGES OF SUPREME COURT—Continued**  
**(For the Term of Ten Years)**

COUNTIES	George W. Allen (Rep.)	Morton S. Bailey (Dem.)	William H. Gabbert (Rep.)	Robert Kerr (Prog.)	Channing Sweet (Soc.)	Samuel N. Wheeler (Dem.)
Kiowa .....	694	711	645	30	123	546
Kit Carson .....	1,133	979	965	46	185	867
Lake .....	1,440	1,761	1,231	36	265	1,663
La Plata .....	1,085	2,013	874	30	220	1,920
Larimer .....	3,234	3,161	3,068	104	530	2,665
Las Animas ....	3,392	3,785	3,165	74	240	3,277
Lincoln .....	1,331	1,173	1,197	44	138	1,007
Logan .....	1,699	1,793	1,513	50	189	1,567
Mesa .....	2,134	2,722	1,968	112	749	3,850
Mineral .....	135	200	134	10	43	166
Moffat .....	555	557	487	15	50	530
Montezuma .....	492	1,041	425	22	90	997
Montrose .....	1,437	1,840	1,339	55	322	1,804
Morgan .....	1,710	1,564	1,621	45	172	1,244
Otero .....	2,646	3,178	2,541	63	209	2,473
Ouray .....	458	704	411	15	91	699
Park .....	344	592	343	7	38	402
Phillips .....	580	512	517	25	91	414
Pitkin .....	303	623	249	13	128	608
Prowers .....	1,512	1,496	1,501	63	245	1,091
Pueblo .....	5,765	9,381	6,732	224	1,305	7,103
Rio Blanco .....	437	518	374	8	25	512
Rio Grande .....	948	1,179	974	21	69	885
Routt .....	1,000	1,327	892	40	160	1,296
Saguaché .....	654	880	634	14	63	689
San Juan .....	271	485	222	12	89	483
San Miguel .....	705	955	772	18	95	882
Sedgwick .....	517	353	470	13	75	302
Summit .....	291	574	249	7	52	512
Teller .....	1,928	1,797	1,770	110	374	2,354

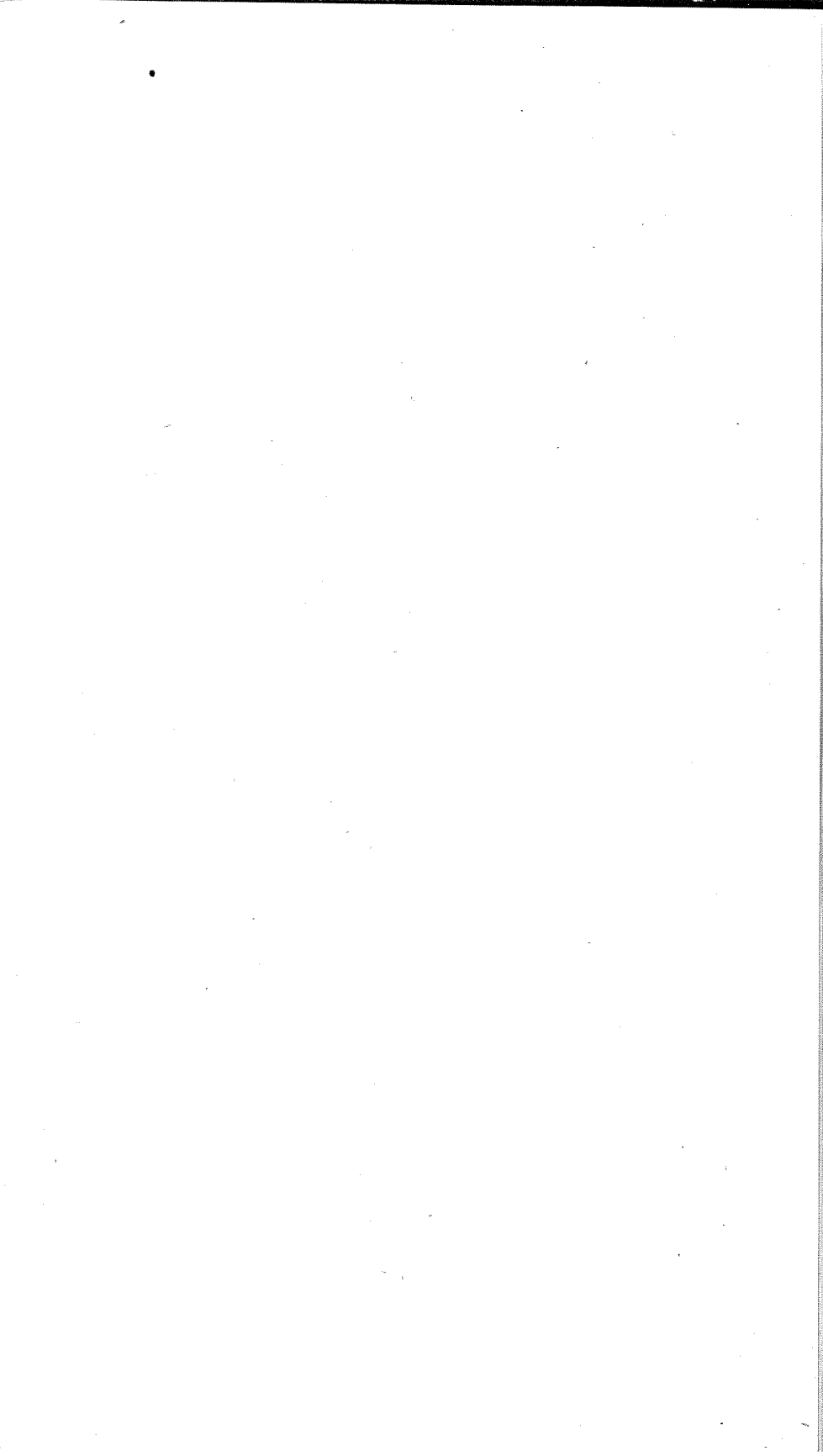
ABSTRACT OF VOTES CAST AT

FOR JUDGES OF SUPREME COURT—Continued  
(For the Term of Ten Years)

COUNTIES	George W. Allen (Rep.)	Morton S. Bailey (Dem.)	William H. Gabbert (Rep.)	Robert Kerr (Prog.)	Channing Sweet (Soc.)	Samuel N. Wheeler (Dem.)
Washington ....	1,080	1,003	899	37	133	835
Weld .....	5,819	5,834	5,622	133	473	5,034
Yuma .....	1,598	1,532	1,448	54	289	1,378
	<hr/>	<hr/>	<hr/>	<hr/>	<hr/>	<hr/>
	111,236	130,809	103,450	4,544	15,268	109,368

Scattering, 1 candidate. Total, 1 Vote

Bailey over Wheeler.....21,441  
Allen over Wheeler..... 1,868



## ABSTRACT OF VOTES CAST AT

## FOR GOVERNOR

COUNTIES	George A. Carlson (Rep.)	Charles E. Goddard (Soc.)	Julius C. Gunter (Dem.)	Louis E. Leeder (Lib.)
Adams .....	1,203	139	1,861	7
Alamosa .....	626	77	1,076	19
Arapahoe .....	1,659	185	2,346	7
Archuleta .....	472	33	589	8
Baca .....	953	251	934	5
Bent .....	1,020	49	1,219	.....
Boulder .....	4,902	616	6,356	16
Chaffee .....	1,163	100	2,027	3
Cheyenne .....	628	97	653	3
Clear Creek .....	565	45	1,124	9
Conejos .....	1,098	18	913	5
Costilla .....	588	31	908	1
Crowley .....	1,004	63	1,002	5
Custer .....	377	41	482	2
Delta .....	2,143	335	2,089	4
Denver .....	24,427	2,379	40,739	186
Dolores .....	69	37	195	.....
Douglas .....	616	26	689	.....
Eagle .....	503	59	936	2
Elbert .....	1,008	106	1,120	2
El Paso .....	7,884	724	7,126	23
Fremont .....	2,661	277	2,656	8
Garfield .....	1,451	201	1,983	21
Gilpin .....	449	29	542	7
Grand .....	374	25	525	4
Gunnison .....	842	154	1,364	3
Hinsdale .....	101	24	161	.....
Huerfano .....	2,196	32	2,344	11
Jackson .....	185	8	297	.....
Jefferson .....	2,254	173	2,942	15



## FOR GOVERNOR—Continued

COUNTIES	George A. Carlson (Rep.)	Charles E. Goddard (Soc.)	Julius C. Gunter (Dem.)	Louis E. Leeder (Lib.)
Kiowa .....	858	125	719	.....
Kit Carson .....	1,320	173	1,071	21
Lake .....	1,207	201	2,374	4
La Plata .....	1,212	189	2,249	14
Larimer .....	3,353	495	4,002	9
Las Animas .....	3,232	175	4,564	40
Lincoln .....	1,365	122	1,420	10
Logan .....	1,860	181	2,116	2,400
Mesa .....	3,106	659	3,314	9
Mineral .....	146	45	270	.....
Moffat .....	604	35	617	1
Montezuma .....	593	90	1,164	1
Montrose .....	1,903	287	1,932	.....
Morgan .....	1,836	164	1,839	4
Otero .....	3,130	163	3,240	4
Ouray .....	519	78	781	4
Park .....	377	40	602	1
Phillips .....	770	91	496	.....
Pitkin .....	371	110	733	4
Prowers .....	2,135	235	1,644	7
Pueblo .....	7,097	910	8,987	31
Rio Blanco .....	511	16	585	2
Rio Grande .....	1,072	49	1,388	1
Routt .....	1,027	134	1,613	8
Saguache .....	826	55	970	2
San Juan .....	291	84	547	3
San Miguel .....	724	70	1,116	1
Sedgwick .....	600	79	382	2
Summit .....	270	47	641	2
Teller .....	2,139	285	2,996	5

## ABSTRACT OF VOTES CAST AT

## FOR GOVERNOR—Continued

COUNTIES	George A. Carlson (Rep.)	Charles E. Goddard (Soc.)	Julius C. Gunter (Dem.)	Louis E. Leeder (Lib.)
Washington .....	1,206	140	1,442	10
Weld .....	6,740	385	7,168	41
Yuma .....	1,902	249	1,732	8
	<hr/>	<hr/>	<hr/>	<hr/>
	117,723	12,495	151,962	2,025

Scattering, 1 Candidate. Total, 8 Votes.

Gunter over Carlson, 34,239

