

STATE OF COLORADO

Abstract of Votes Cast

AT THE

Primary Election

Held on the Twelfth Day of September,
A. D. 1916

AND AT THE

General Election

Held on the Seventh Day of November,
A. D. 1916

FOR

Presidential Electors, Congressmen, and State,
Legislative and District Officers

ALSO THE

Proposed Constitutional Amendments
Initiated and Referred Bills

COMPILED FROM OFFICIAL RETURNS

BY

JAMES R. NOLAND
Secretary of State

1916



DENVER, COLORADO
THE C. F. HOECKEL BLANK BOOK AND LITHOGRAPHING CO.
1916

ABSTRACT OF VOTES CAST AT

**FOR
REPRESENTATIVES IN THE TWENTY-FIRST GENERAL ASSEMBLY
FROM THE COUNTIES OF PHILLIPS AND YUMA**

COUNTIES	Charles E. Damewood (Rep.)	George B. Weir (Dem.)	W. J. Walsh (Soc.)
Phillips	543	747	..
Yuma	1,699	1,768	1
	<hr/>	<hr/>	<hr/>
	2,242	2,515	1

Weir over Damewood, 273

**FOR
REPRESENTATIVES IN THE TWENTY-FIRST GENERAL ASSEMBLY
FROM THE COUNTY OF PITKIN**

COUNTY	James N. Ashby (Dem.)	James M. Downing (Rep.)	J. E. Turner (Soc.)
Pitkin	521	573	155

Downing over Ashby, 52

**FOR
REPRESENTATIVES IN THE TWENTY-FIRST GENERAL ASSEMBLY
FROM THE COUNTIES OF PROWERS AND BACA**

COUNTIES	Allyn Cole (Rep.)	A. C. Davis (Dem.)
Prowers	2,199	1,559
Baca	1,199	865
	<hr/>	<hr/>
	3,398	2,424

Cole's majority 974

**FOR
REPRESENTATIVES IN THE TWENTY-FIRST GENERAL ASSEMBLY
FROM THE COUNTY OF PUEBLO**

Sterling Cawfield, Democrat	9,199
Charles A. Foster, Republican	7,473
M. E. Fuller, Democrat	7,187
Charles Medde, Republican	5,682
Thomas Mishou, Democrat	7,650
J. Arthur Phelps, Republican	6,918
F. M. Stokes, Republican	5,529
Mike Studzinski, Democrat	7,698
W. H. Champion, Socialist	1,586
Charles H. Hummell, Socialist	1,439
Vida McGrew, Socialist	1,232
James Pettijohn, Socialist	2,149
Cawfield over Fuller	2,012
Studzinski over Fuller	511
Mishou over Fuller	463
Foster over Fuller	286

**FOR
REPRESENTATIVES IN THE TWENTY-FIRST GENERAL ASSEMBLY
FROM THE COUNTY OF RIO GRANDE**

COUNTY	William A. Bronaugh (Dem.)	Charles Edman (Rep.)
Rio Grande	1,392	1,108
Bronaugh's majority 284		

FOR
REPRESENTATIVES IN THE TWENTY-FIRST GENERAL ASSEMBLY
FROM THE COUNTIES OF ROUTT AND MOFFAT

COUNTIES	George W. Smith (Rep.)	M. H. Smith (Dem.)
Routt	1,523	1,138
Moffatt	744	503
	2,267	1,641

George W. Smith's majority 626

FOR
REPRESENTATIVES IN THE TWENTY-FIRST GENERAL ASSEMBLY
FROM THE COUNTIES OF SAGUACHE AND CUSTER

COUNTIES	Carl L. Marold (Dem.)	John T. McNeely (Rep.)
Saguache	1,070	710
Custer	449	465
	1,519	1,175

Marold's majority 344

**FOR
REPRESENTATIVES IN THE TWENTY-FIRST GENERAL ASSEMBLY
FROM THE COUNTY OF SAN JUAN**

COUNTY	E. J. Holman (Rep.)	Metz Rodgers (Dem.)
San Juan	385	516
Rodgers' majority 131		

**FOR
REPRESENTATIVES IN THE TWENTY-FIRST GENERAL ASSEMBLY
FROM THE COUNTY OF SAN MIGUEL**

COUNTY	J. W. S. Cross (Rep.)	W. H. Doyle (Dem.)
San Miguel	1,410	512
Cross' majority 898		

**FOR
REPRESENTATIVES IN THE TWENTY-FIRST GENERAL ASSEMBLY
FROM THE COUNTIES OF SUMMIT, GRAND AND JACKSON**

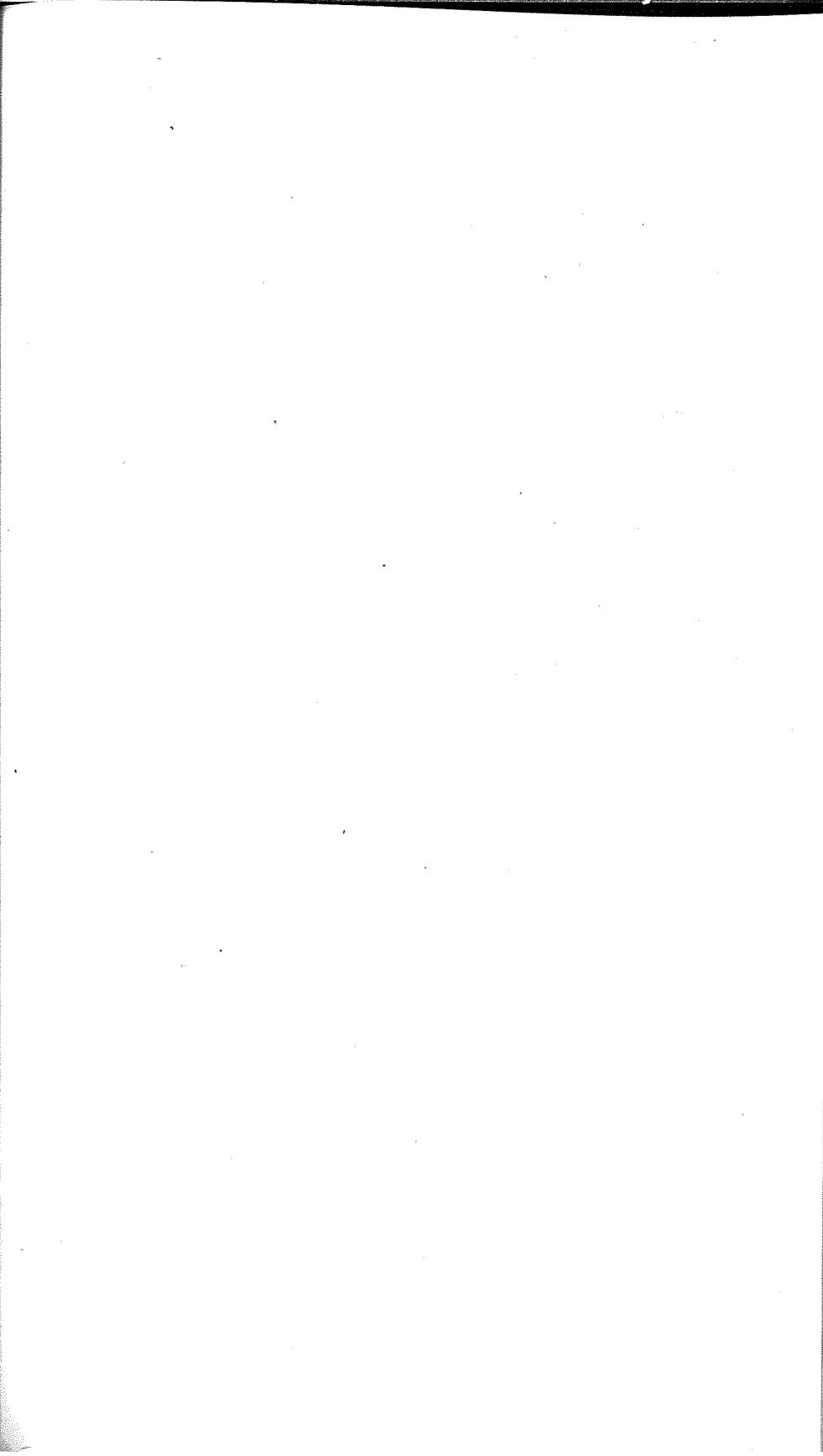
COUNTIES	Frank W. Murphy (Rep.)	A. E. Wilkins (Dem.)
Summit	444	492
Grand	640	442
Jackson	238	251
	1,322	1,185
Murphy's majority 187		

**FOR
REPRESENTATIVES IN THE TWENTY-FIRST GENERAL ASSEMBLY
FROM THE COUNTIES OF TELLER AND PARK**

COUNTIES	G. R. Freeman (Soc.)	George M. Harris (Dem.)	John Ifinger (Dem.)	Henry P. Nagel, Jr. (Rep.)	W. L. Shockey (Rep.)	Ernest I. Zimmerman (Soc.)
Teller	343	2,036	2,146	2,548	2,705	398
Park	38	475	495	417	367	41
	381	2,511	2,641	2,965	3,072	439
Shockey over Ifinger					431	
Nagel over Ifinger					324	

**FOR
REPRESENTATIVES IN THE TWENTY-FIRST GENERAL ASSEMBLY
FROM THE COUNTY OF WELD**

COUNTY	William K. Gilcrest (Rep.)	C. R. Graves (Rep.)	A. F. Hart (Dem.)	Evert H. Houtchens (Dem.)
Weld	5,860	6,454	5,830	5,925
Graves over Gilcrest				594
Houtchens over Gilcrest				65



FOR PRESIDENTIAL ELECTORS

COUNTIES	John C. Bell (Dem.)	Peter Krier (Dem.)	Thomas E. Munson (Dem.)	William E. Sweet (Dem.)	Sarah K. Walling (Dem.)	Charles H. S. Whipple (Dem.)
Adams	2,112	2,105	2,120	2,112	2,113	2,088
Alamosa	1,309	1,308	1,308	1,307	1,301	1,275
Arapahoe	2,662	2,636	2,652	2,635	2,637	2,634
Archuleta	825	818	830	806	807	802
Baca	1,266	1,256	1,294	1,259	1,261	1,262
Bent	1,482	1,468	1,473	1,471	1,465	1,463
Boulder	7,443	7,413	7,419	7,406	7,410	7,381
Chaffee	2,515	2,513	2,546	2,516	2,524	2,508
Cheyenne	797	794	802	793	795	797
Clear Creek	1,291	1,287	1,289	1,286	1,285	1,278
Conejos	1,731	1,712	1,721	1,711	1,710	1,703
Costilla	1,053	1,024	1,028	1,020	1,022	1,009
Crowley	1,160	1,155	1,160	1,152	1,158	1,154
Custer	537	530	529	533	530	532
Delta	2,824	2,825	2,817	2,810	2,811	2,804
Denver	42,849	42,849	43,029	42,884	42,860	42,538
Delores	254	250	251	252	249	250
Douglas	815	811	820	813	810	804
Eagle	1,129	1,125	1,136	1,127	1,120	1,136
Elbert	1,218	1,221	1,230	1,218	1,217	1,203
El Paso	8,336	8,326	8,381	8,307	8,310	8,316
Fremont	3,356	3,351	3,395	3,357	3,351	3,342
Garfield	2,484	2,474	2,479	2,461	2,462	2,450
Gilpin	739	745	763	746	752	743
Grand	624	622	624	619	620	618
Gunnison	1,617	1,609	1,618	1,611	1,609	1,609
Hinsdale	179	177	178	177	177	178
Huerfano	2,569	2,563	2,632	2,550	2,558	2,551
Jackson	334	329	331	330	330	332
Jefferson	3,246	3,282	3,368	3,245	3,291	3,218
Kiowa	862	866	936	870	876	901
Kit Carson	1,539	1,526	1,571	1,524	1,522	1,532
Lake	2,587	2,573	2,672	2,563	2,578	2,640

FOR PRESIDENTIAL ELECTORS—Continued

COUNTIES	John C. Bell (Dem.)	Peter Krier (Dem.)	Thomas E. Munson (Dem.)	William E. Sweet (Dem.)	Sarah K. Walling (Dem.)	Charles H. S. Whipple (Dem.)
La Plata	2,605	2,606	2,590	2,579	2,579	2,571
Larimer	4,552	4,547	4,868	4,556	4,647	4,575
Las Animas	5,322	5,289	5,300	5,279	5,265	5,242
Lincoln	1,693	1,677	1,702	1,678	1,681	1,672
Logan	2,646	2,660	2,679	2,628	2,643	2,652
Mesa	4,409	4,389	4,394	4,371	4,368	4,340
Mineral	274	276	278	273	274	272
Moffat	736	738	740	736	735	731
Montezuma	1,453	1,443	1,458	1,444	1,446	1,450
Montrose	2,594	2,570	2,571	2,565	2,560	2,526
Morgan	2,390	2,368	2,371	2,367	2,369	2,366
Otero	3,975	3,961	3,963	3,955	3,948	3,945
Ouray	971	958	961	957	957	952
Park	668	668	674	665	666	662
Phillips	782	782	795	783	785	777
Pitkin	896	935	915	895	900	916
Prowers	2,151	2,144	2,168	2,153	2,155	2,128
Pueblo	10,445	10,428	10,710	10,451	10,492	10,461
Rio Blanco	698	692	702	690	690	689
Rio Grande	1,746	1,749	1,756	1,743	1,746	1,738
Routt	1,959	1,964	1,972	1,957	1,963	1,947
Saguache	1,250	1,238	1,254	1,241	1,244	1,229
San Juan	691	685	693	688	686	685
San Miguel	1,311	1,311	1,325	1,316	1,319	1,293
Sedgwick	520	516	519	514	517	512
Summit	716	713	717	714	714	717
Teller	3,512	3,574	3,515	3,493	3,535	3,498
Washington	1,752	1,738	1,748	1,736	1,737	1,739
Weld	8,588	8,550	8,600	8,535	8,532	8,529
Yuma	2,447	2,437	2,466	2,437	2,436	2,436
	<hr/>	<hr/>	<hr/>	<hr/>	<hr/>	<hr/>
	177,496	177,149	178,816	176,867	177,110	176,301

FOR PRESIDENTIAL ELECTORS—Continued

COUNTIES	Charles Boettcher (Rep.)	David R. C. Brown (Rep.)	C. W. Crews (Rep.)	Bruce G. Eaton (Rep.)	Lawrence C. Phipps (Rep.)	William F. Slocum (Rep.)
Adams	1,161	1,155	1,165	1,157	1,155	1,149
Alamosa	491	489	488	485	488	488
Arapahoe	1,437	1,443	1,443	1,441	1,446	1,441
Archuleta	456	468	473	470	474	475
Baca	830	819	826	810	810	816
Bent	843	837	833	834	834	831
Boulder	4,004	3,999	3,986	3,993	3,992	3,982
Chaffee	856	853	864	844	849	848
Cheyenne	556	555	558	551	549	554
Clear Creek	477	474	474	474	473	475
Conejos	917	919	928	926	923	919
Costilla	568	594	579	577	577	573
Crowley	806	827	847	822	825	819
Custer	398	400	403	402	401	397
Delta	1,606	1,613	1,612	1,602	1,608	1,601
Denver	22,931	23,029	23,185	23,012	23,108	22,936
Dolores	48	46	46	44	46	45
Douglas	596	592	612	594	597	596
Eagle	388	394	397	397	392	396
Elbert	934	947	951	940	946	939
El Paso	7,091	7,077	7,159	7,090	7,087	7,132
Fremont	2,227	2,228	2,257	2,226	2,225	2,222
Garfield	1,137	1,135	1,139	1,130	1,132	1,129
Gilpin	394	400	407	398	402	398
Grand	379	378	378	375	376	372
Gunnison	730	721	736	724	723	725
Hinsdale	93	91	94	90	90	92
Huerfano	1,976	1,946	2,027	1,940	1,929	1,990
Jackson	158	158	157	158	156	153
Jefferson	2,012	2,012	2,040	1,997	2,010	1,957
Kiowa	666	661	723	675	664	715
Kit Carson	1,008	990	1,030	992	987	993
Lake	963	946	993	939	946	984

FOR PRESIDENTIAL ELECTORS—Continued

COUNTIES	Charles Boettcher (Rep.)	David R. C. Brown (Rep.)	C. W. Crews (Rep.)	Bruce G. Eaton (Rep.)	Lawrence C. Phipps (Rep.)	William F. Slocum (Rep.)
La Plata	1,043	1,032	1,029	1,023	1,028	1,027
Larimer	2,733	2,700	2,797	2,722	2,733	2,752
Las Animas	3,551	3,510	3,511	3,500	3,511	3,478
Lincoln	1,126	1,124	1,129	1,121	1,125	1,122
Logan	1,425	1,433	1,422	1,422	1,422	1,421
Mesa	2,229	2,227	2,223	2,216	2,221	2,209
Mineral	132	135	135	133	136	132
Moffat	514	511	512	509	510	507
Montezuma	417	419	425	412	412	412
Montrose	1,303	1,316	1,315	1,311	1,309	1,296
Morgan	1,544	1,538	1,541	1,524	1,535	1,536
Otero	2,684	2,673	2,678	2,669	2,669	2,656
Ouray	400	397	399	398	400	396
Park	370	371	372	371	372	374
Phillips	530	529	532	530	530	532
Pitkin	263	281	263	260	264	272
Prowers	1,669	1,676	1,683	1,664	1,674	1,652
Pueblo	6,336	6,331	6,545	6,361	6,339	6,468
Rio Blanco	466	467	468	465	466	467
Rio Grande	887	889	886	882	879	871
Routt	839	844	849	839	846	835
Saguache	676	676	681	676	675	674
San Juan	216	212	214	211	213	212
San Miguel	586	571	578	571	574	567
Sedgwick	522	532	529	528	527	527
Summit	265	265	268	266	266	264
Teller	1,698	1,707	1,693	1,681	1,690	1,670
Washington	998	984	989	981	988	985
Weld	5,397	5,383	5,395	5,398	5,381	5,370
Yuma	1,432	1,417	1,436	1,418	1,418	1,424
	<hr/>	<hr/>	<hr/>	<hr/>	<hr/>	<hr/>
	101,388	101,346	102,308	101,171	101,333	101,250

Wilson over Hughes, 76,508

FOR PRESIDENTIAL ELECTORS—Continued

COUNTIES	Ruth De Long Avery (Prog.)	D. C. Burns (Prog.)	James H. Causey (Prog.)	Hattie K. Howard (Prog.)	Robert Kerr (Prog.)	L. G. Kurtz (Prog.)
Adams	3	2	4	4	2	2
Alamosa	2	1	1
Arapahoe	19	6	6	6	6	5
Archuleta	8	5	3	2	4	4
Baca	6	2	1	4	3	1
Bent	3	2	3	6	3	6
Boulder	21	5	5	8	8	5
Chaffee	4	4	4	1
Cheyenne	2	3	4	2	3	3
Clear Creek	3	1	1	3	1	1
Conejos	11	8	8	12	5	5
Costilla	30	38	14	18	14	13
Crowley	6	7	5	4	3	4
Custer	2	6	5	5	7	3
Delta	5	5	4	4	4	7
Denver	63	75	65	53	41	44
Dolores	1	1
Douglas	1	1	2	2	1	1
Eagle	1
Elbert	9	3	3	2	3	2
El Paso	24	14	11	16	22	10
Fremont	1	3	2	2	2	1
Garfield	1	2	1	1
Gilpin	1	2	1
Grand	1
Gunnison	2	3	2	2	4	1
Hinsdale
Huerfano	12	9	3	3	4	10
Jackson
Jefferson	6	6	6	8	4	4
Kiowa	6	2	2	2	2	2
Kit Carson	1	3	3	4	1	1
Lake	7	5	3	8	3	4

FOR PRESIDENTIAL ELECTORS—Continued

COUNTIES	Ruth De Long Avery (Prog.)	D. C. Burns (Prog.)	James H. Causey (Prog.)	Hattie K. Howard (Prog.)	Robert Kerr (Prog.)	L. G. Kurtz (Prog.)
La Plata	3	1	3	3
Larimer	7	3	11	12	3	2
Las Animas	41	39	25	19	22	15
Lincoln	4	3	7	5	5	4
Logan	8	7	6	8	7	4
Mesa	3	2	3	2	2	1
Mineral		1
Moffat	2	1
Montezuma		2	4	3	1
Montrose	1	3	1	1	3	1
Morgan	4	4	3	2	2	3
Otero	12	8	7	5	6	5
Ouray	2	1	1	1
Park	3	3	3	3	3	3
Phillips	2	4	2	2	1	2
Pitkin	2	2	2	1	3
Prowers	2	3	2	4	4
Pueblo	18	15	5	8	11	18
Rio Blanco	1
Rio Grande	2	1
Routt	1	1	4	2	1	1
Saguache	4	3	3	3	6	3
San Juan	2	2	3	3	1	1
San Miguel	3	2	4	1
Sedgwick	6	3	4	2	3	2
Summit
Teller	5	3	5	10	6	1
Washington	3	2	2
Weld	6	10	3	8	6	14
Yuma	4	4	7	9	7	6
	409	352	284	307	259	228

FOR PRESIDENTIAL ELECTORS—Continued

COUNTIES	J. A. Cochran (Prob.)	S. H. Pollock (Prob.)	Otto A. Reinhardt (Prob.)	P. A. Rice (Prob.)	Fred White (Prob.)	Edgar Wilkinson (Prob.)
Adams	21	20	20	21	20	22
Alamosa	4	4	4	4	5	4
Arapahoe	12	14	11	9	14	13
Archuleta	3	3	2	2	2	5
Baca	24	23	23	24	24	23
Bent	30	29	29	27	29	29
Boulder	163	155	158	152	163	156
Chaffee	21	22	20	21	22	21
Cheyenne	10	11	9	9	9	10
Clear Creek	1	1	4	1	2	2
Conejos	5	4	4	3	4	4
Costilla	9	8	10	6	9	9
Crowley	29	29	30	28	28	27
Custer	5	5	4	2	4	5
Delta	61	61	61	59	60	63
Denver	409	412	416	406	410	394
Dolores		1
Douglas	5	5	3	3	3	4
Eagle	7	5	5	5	5	8
Elbert	19	19	21	20	21	19
El Paso	321	315	324	315	322	314
Fremont	69	71	67	67	69	68
Garfield	36	35	36	35	35	34
Gilpin	5	6	5	6	6	5
Grand	3	2	2	2	2	2
Gunnison	11	8	9	8	9	10
Hinsdale	1	1	1	1	1	1
Huerfano	31	20	24	20	21	51
Jackson	4	5	4	4	5	4
Jefferson	21	23	26	21	24	21
Kiowa	21	20	27	28	19	29
Kit Carson	30	30	34	27	28	29

FOR PRESIDENTIAL ELECTORS—Continued

COUNTIES	J. A. Cochran (Prob.)	S. H. Pollock (Prob.)	Otto A. Reinhardt (Prob.)	F. A. Rice (Prob.)	Fred White (Prob.)	Edgar Wilkinson (Prob.)
Lake	190	191	196	191	192	195
La Plata	21	22	19	17	17	17
Larimer	94	89	94	86	88	89
Las Animas	43	39	39	39	39	43
Lincoln	32	31	32	31	32	32
Logan	23	19	23	21	21	18
Mesa	231	220	217	222	217	217
Mineral	2	2	2	2	2	3
Moffat	4	4	3	3	3	2
Montezuma	9	6	6	7	6	7
Montrose	40	31	33	32	34	31
Morgan	29	25	24	23	23	24
Otero	104	104	99	99	100	101
Ouray	3	2	1	4	1	1
Park	2	2	2	2	2	3
Phillips	9	6	5	5	4	6
Pitkin	3	3	5	3	3	3
Prowers	61	61	64	61	61	60
Pueblo	137	140	143	135	134	130
Rio Blanco	4	3	3	3	4	4
Rio Grande	26	24	23	23	23	23
Routt	16	14	18	14	16	12
Saguache	5	6	4	4	6	3
San Juan	7	7	7	8	7	7
San Miguel	7	9	11	8	9	8
Sedwick	8	8	6	6	8	6
Summitt	7	6	6	6	6	6
Teller	17	18	17	17	20	20
Washington	29	27	30	28	27	29
Weld	208	208	207	203	200	207
Yuma	31	30	31	30	31	30
	<hr/>	<hr/>	<hr/>	<hr/>	<hr/>	<hr/>
	2,793	2,724	2,763	2,669	2,711	2,723

FOR PRESIDENTIAL ELECTORS—Continued

COUNTIES	May Charette (Soc.)	Mary L. Geffs (Soc.)	Abraham Marians (Soc.)	Charles E. Morrisson (Soc.)	Chas. Fush (Soc.)	Garnett Underhill (Soc.)
Adams	125	121	125	121	122	121
Alamosa	66	66	64	66	65	64
Arapahoe	123	125	129	126	124	125
Archuleta	10	11	11	10	11	12
Baca	207	205	208	204	206	205
Bent	54	56	55	55	55	56
Boulder	480	483	482	478	480	480
Chaffee	79	78	78	77	80	75
Cheyenne	81	81	82	80	80	81
Clear Creek	32	33	32	32	32	33
Conejos	7	7	6	7	7	8
Costilla	24	24	25	28	29	27
Crowley	52	53	51	51	53	48
Custer	35	34	35	34	34	33
Delta	285	286	282	287	288	285
Denver	1,810	1,815	1,826	1,813	1,807	1,799
Dolores	30	30	30	29	31	30
Douglas	13	13	13	12	12	12
Eagle	37	34	36	35	37	35
Elbert	85	88	90	89	88	86
El Paso	550	546	552	544	547	552
Fremont	240	240	243	241	239	242
Garfield	160	158	161	157	157	157
Gilpin	15	15	15	16	15	15
Grand	12	12	11	11	11	11
Gunnison	116	115	115	114	115	116
Hinsdale	29	29	29	29	29	29
Huerfano	22	26	25	27	24	32
Jackson	5	5	5	5	5	5
Jefferson	135	141	139	143	147	144
Kiowa	130	131	141	141	132	147
Kit Carson	147	141	147	143	142	144
Lake	34	31	38	30	39	36

FOR PRESIDENTIAL ELECTORS—Continued

COUNTIES	May Charette (Soc.)	Mary L. Geffs (Soc.)	Abraham Marians (Soc.)	Charles E. Morrisson (Soc.)	Chas. Rush (Soc.)	Garnett Underhill (Soc.)
La Plata	158	160	158	157	155	157
Larimer	383	376	417	380	392	387
Las Animas	156	151	152	154	150	148
Lincoln	121	118	119	119	119	121
Logan	112	116	111	110	115	113
Mesa	541	535	544	540	544	539
Mineral	46	48	48	48	47	46
Moffat	31	31	31	31	31	31
Montezuma	75	75	76	72	73	74
Montrose	252	252	252	251	251	250
Morgan	117	116	111	111	117	114
Otero	171	167	167	167	167	165
Ouray	56	57	56	58	57	57
Park	28	28	28	28	28	29
Phillips	56	56	56	58	57	58
Pitkin	100	105	100	101	99	102
Prowers	238	239	244	247	244	236
Pueblo	706	705	731	704	707	717
Rio Blanco	10	12	12	9	12	11
Rio Grande	49	45	47	45	47	45
Routt	115	114	114	116	114	113
Saguache	46	46	46	46	45	47
San Juan	73	73	74	74	74	72
San Miguel	69	70	71	69	69	69
Sedgwick	68	67	67	68	68	66
Summit	28	28	28	28	30	28
Teller	235	239	231	232	235	232
Washington	131	129	129	131	128	131
Weld	327	332	324	325	331	311
Yuma	223	219	224	219	221	220
	9,951	9,942	10,049	9,933	9,970	9,933

ABSTRACT OF VOTES CAST AT

**FOR
REPRESENTATIVES IN THE SIXTY-FIFTH CONGRESS,
FOR FIRST CONGRESSIONAL DISTRICT**

(City and County of Denver)

Charles A. Ahlstrom, Socialist.....	2,551
Benjamin C. Hilliard, Democrat.....	30,146
George J. Kindel, Liberal.....	3,306
William N. Vaile, Republican.....	26,121

Hilliard over Vaile, 4,025

**FOR
REPRESENTATIVES IN THE SIXTY-FIFTH CONGRESS,
FOR SECOND CONGRESSIONAL DISTRICT**

COUNTIES	Ralph R. Drennen (Prog.)	J. Edward Johnson (Soc.)	R. E. Jones (Dem.)	Charles B. Timberlake (Rep.)
Adams	19	137	1,284	1,473
Arapahoe	14	180	1,557	1,780
Boulder	62	657	4,924	5,286
Cheyenne	16	94	451	721
Douglas	4	25	540	661
Elbert	10	95	688	1,022
El Paso	100	769	5,297	8,647
Kit Carson	30	161	779	1,435
Larimer	41	493	2,586	3,959
Lincoln	12	103	847	1,403
Logan	25	132	1,156	2,699
Morgan	66	128	1,507	1,983
Phillips	7	78	407	777
Sedgwick	7	72	310	597
Washington	17	135	719	1,477
Weld	65	391	5,016	6,651
Yuma	18	234	1,266	2,094
	513	3,884	29,334	42,665

Timberlake over Jones, 13,331.

**FOR
REPRESENTATIVES IN THE SIXTY-FIFTH CONGRESS,
FOR THIRD CONGRESSIONAL DISTRICT**

COUNTIES	William G. Francis (Prog.)	Edward Keating (Dem.)	Geo. E. McClelland (Rep.)	David McGrew (Soc.)	William H. Steele (Soc.-Lab.)
Alamosa	4	908	582	49	4
Baca	12	1,067	732	174	19
Bent	14	1,226	869	41	7
Clear Creek	4	699	903	26	3
Conejos	13	873	894	13	7
Costilla	14	844	539	30	6
Crowley	7	948	814	38	14
Custer	5	469	340	24	5
Fremont	26	2,865	2,165	193	17
Gilpin	5	504	464	17	5
Huerfano	27	2,304	1,959	23	8
Jefferson	49	2,560	2,151	139	33
Kiowa	14	849	630	93	15
Las Animas	32	4,209	3,079	131	21
Mineral	2	223	142	29	2
Otero	40	3,253	2,813	167	24
Park	3	541	383	23	3
Prowers	38	1,694	1,551	171	30
Pueblo	91	8,883	6,597	844	157
Rio Grande	9	1,318	1,002	37	2
Saguache	7	933	656	34	3
Teller	27	3,013	1,872	196	40
	443	40,183	31,137	2,492	425

Scattering, 2 Candidates. Total, 3 Votes.

Keating over McClelland, 9,046

ABSTRACT OF VOTES CAST AT

**FOR
REPRESENTATIVES IN THE SIXTY-FIFTH CONGRESS,
FOR FOURTH CONGRESSIONAL DISTRICT**

COUNTIES	Henry J. Baird (Rep.)	Emery D. Cox. (Soc.)	Edward T. Taylor (Dem.)
Archuleta	391	27	656
Chaffee	867	92	2,015
Delta	1,380	344	2,650
Dolores	40	36	227
Eagle	352	57	1,016
Garfield	917	154	2,468
Grand	348	17	552
Gunnison	622	134	1,434
Hinsdale	84	24	167
Jackson	130	5	301
Lake	1,080	221	2,181
La Plata	869	143	2,374
Mesa	1,782	629	4,057
Moffat	397	29	772
Montezuma	412	74	1,247
Montrose	1,044	246	2,408
Ouray	379	72	838
Pitkin	215	93	843
Rio Blanco	356	12	702
Routt	839	108	1,662
San Juan	202	73	597
San Miguel	455	67	1,110
Summit	236	38	649
	13,397	2,695	30,926

Taylor over Baird, 17,529

ABSTRACT OF VOTES CAST AT
FOR JUDGES OF SUPREME COURT
(For the Term of Ten Years)

COUNTIES	George W. Allen (Rep.)	Morton S. Bailey (Dem.)	William H. Gabbert (Rep.)	Robert Kerr * (Prog.)	Channing Sweet (Soc.)	Samuel N. Wheeler (Dem.)
Adams	1,179	1,368	1,021	32	169	1,312
Alamosa	554	928	503	18	87	703
Arapahoe	1,729	1,767	1,476	47	203	1,398
Archuleta	446	544	402	21	40	529
Baca	825	835	724	30	249	637
Bent	940	1,013	872	23	56	789
Boulder	4,395	5,600	4,331	173	726	4,777
Chaffee	1,019	1,886	934	30	143	1,637
Cheyenne	599	557	521	24	100	469
Clear Creek	578	869	520	21	60	742
Conejos	838	849	741	17	23	620
Costilla	551	807	505	12	34	749
Crowley	823	877	796	27	68	784
Custer	314	496	320	7	37	341
Delta	1,765	1,874	1,704	85	405	1,746
Denver	28,799	32,777	25,407	886	3,336	24,760
Dolores	56	180	41	6	43	179
Douglas	619	551	565	10	33	497
Eagle	526	757	466	10	76	708
Elbert	940	795	781	40	106	642
El Paso	6,887	6,390	6,793	1,229	875	5,477
Fremont	2,022	2,942	2,071	80	329	1,933
Garfield	1,321	1,717	1,069	32	235	1,778
Gilpin	385	480	362	9	37	415
Grand	440	441	356	10	26	405
Gunnison	820	1,154	662	23	170	1,178
Hinsdale	115	128	96	1	30	143
Huerfano	1,930	2,324	1,904	27	47	1,996
Jackson	187	215	161	4	5	187
Jefferson	2,179	2,465	2,094	60	200	1,781

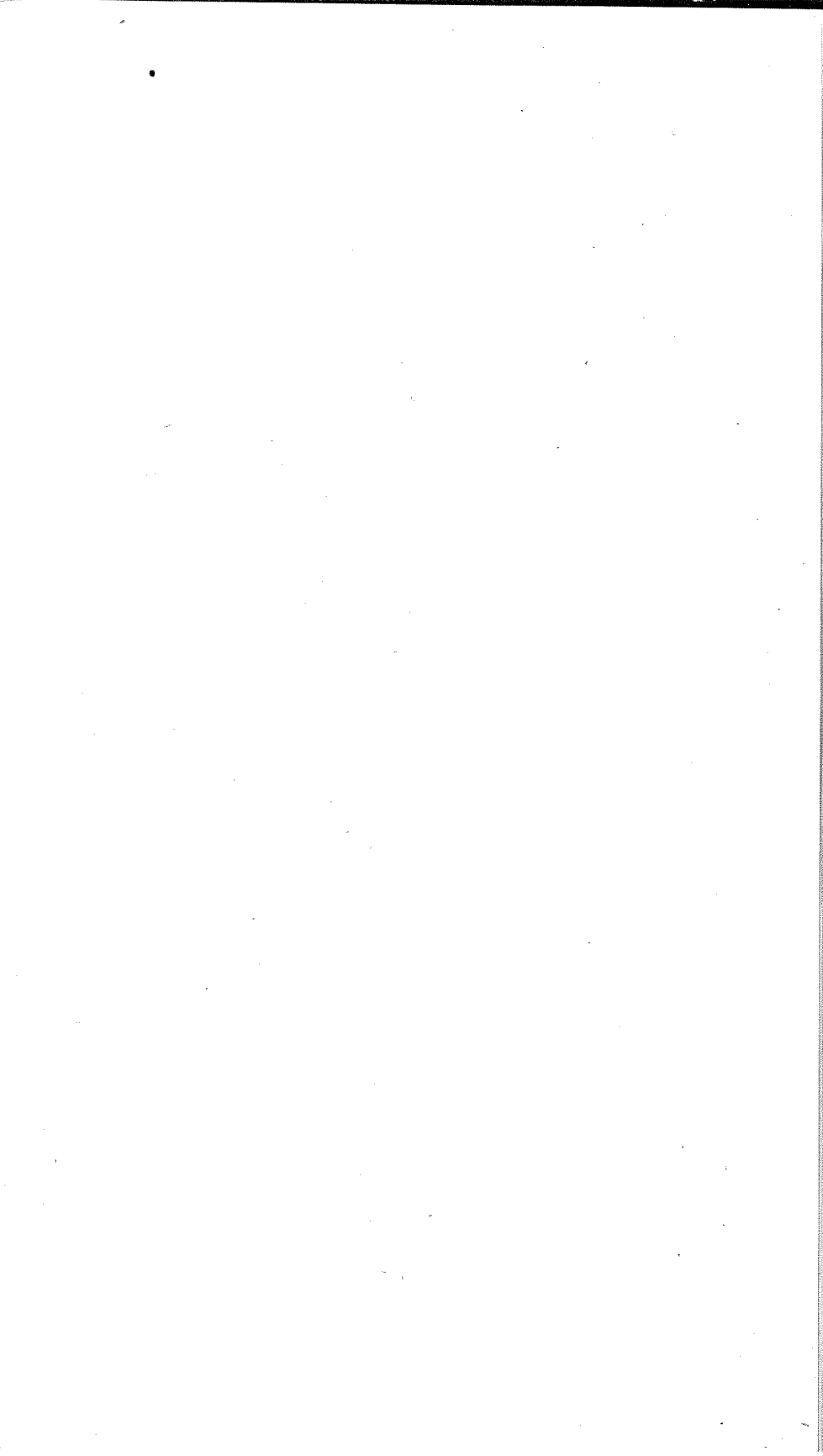
FOR JUDGES OF SUPREME COURT—Continued
(For the Term of Ten Years)

COUNTIES	George W. Allen (Rep.)	Morton S. Bailey (Dem.)	William H. Gabbert (Rep.)	Robert Kerr (Prog.)	Channing Sweet (Soc.)	Samuel N. Wheeler (Dem.)
Kiowa	694	711	645	30	123	546
Kit Carson	1,133	979	965	46	185	867
Lake	1,440	1,761	1,231	36	265	1,663
La Plata	1,085	2,013	874	30	220	1,920
Larimer	3,234	3,161	3,068	104	530	2,665
Las Animas	3,392	3,785	3,165	74	240	3,277
Lincoln	1,331	1,173	1,197	44	138	1,007
Logan	1,699	1,793	1,513	50	189	1,567
Mesa	2,134	2,722	1,968	112	749	3,850
Mineral	135	200	134	10	43	166
Moffat	555	557	487	15	50	530
Montezuma	492	1,041	425	22	90	997
Montrose	1,437	1,840	1,339	55	322	1,804
Morgan	1,710	1,564	1,621	45	172	1,244
Otero	2,646	3,178	2,541	63	209	2,473
Ouray	458	704	411	15	91	699
Park	344	592	343	7	38	402
Phillips	580	512	517	25	91	414
Pitkin	303	623	249	13	128	608
Prowers	1,512	1,496	1,501	63	245	1,091
Pueblo	5,765	9,381	6,732	224	1,305	7,103
Rio Blanco	437	518	374	8	25	512
Rio Grande	948	1,179	974	21	69	885
Routt	1,000	1,327	892	40	160	1,296
Saguaché	654	880	634	14	63	689
San Juan	271	485	222	12	89	483
San Miguel	705	955	772	18	95	882
Sedgwick	517	353	470	13	75	302
Summit	291	574	249	7	52	512
Teller	1,928	1,797	1,770	110	374	2,354

ABSTRACT OF VOTES CAST AT

FOR JUDGES OF SUPREME COURT—Continued
(For the Term of Ten Years)

COUNTIES	George W. Allen (Rep.)	Morton S. Bailey (Dem.)	William H. Gabbert (Rep.)	Robert Kerr (Prog.)	Channing Sweet (Soc.)	Samuel N. Wheeler (Dem.)
Washington	1,080	1,003	899	37	133	835
Weld	5,819	5,834	5,622	133	473	5,034
Yuma	1,598	1,532	1,448	54	289	1,378
	111,236	130,809	103,450	4,544	15,268	109,368
Scattering, 1 candidate. Total, 1 Vote						
Bailey over Wheeler.....						21,441
Allen over Wheeler.....						1,868



ABSTRACT OF VOTES CAST AT

FOR GOVERNOR

COUNTIES	George A. Carlson (Rep.)	Charles E. Goddard (Soc.)	Julius C. Gunter (Dem.)	Louis E. Leeder (Lib.)
Adams	1,203	139	1,861	7
Alamosa	626	77	1,076	19
Arapahoe	1,659	185	2,346	7
Archuleta	472	33	589	8
Baca	953	251	934	5
Bent	1,020	49	1,219
Boulder	4,902	616	6,356	16
Chaffee	1,163	100	2,027	3
Cheyenne	628	97	653	3
Clear Creek	565	45	1,124	9
Conejos	1,098	18	913	5
Costilla	588	31	908	1
Crowley	1,004	63	1,002	5
Custer	377	41	482	2
Delta	2,143	335	2,089	4
Denver	24,427	2,379	40,739	186
Dolores	69	37	195
Douglas	616	26	689
Eagle	503	59	936	2
Elbert	1,008	106	1,120	2
El Paso	7,884	724	7,126	23
Fremont	2,661	277	2,656	8
Garfield	1,451	201	1,983	21
Gilpin	449	29	542	7
Grand	374	25	525	4
Gunnison	842	154	1,364	3
Hinsdale	101	24	161
Huerfano	2,196	32	2,344	11
Jackson	185	8	297
Jefferson	2,254	173	2,942	15

FOR GOVERNOR—Continued

COUNTIES	George A. Carlson (Rep.)	Charles E. Goddard (Soc.)	Julius C. Gunter (Dem.)	Louis E. Leeder (Lib.)
Kiowa	858	125	719
Kit Carson	1,320	173	1,071	21
Lake	1,207	201	2,374	4
La Plata	1,212	189	2,249	14
Larimer	3,353	495	4,002	9
Las Animas	3,232	175	4,564	40
Lincoln	1,365	122	1,420	10
Logan	1,860	181	2,116	2,400
Mesa	3,106	659	3,314	9
Mineral	146	45	270
Moffat	604	35	617	1
Montezuma	593	90	1,164	1
Montrose	1,903	287	1,932
Morgan	1,836	164	1,839	4
Otero	3,130	163	3,240	4
Ouray	519	78	781	4
Park	377	40	602	1
Phillips	770	91	496
Pitkin	371	110	733	4
Prowers	2,135	235	1,644	7
Pueblo	7,097	910	8,987	31
Rio Blanco	511	16	585	2
Rio Grande	1,072	49	1,388	1
Routt	1,027	134	1,613	8
Saguache	826	55	970	2
San Juan	291	84	547	3
San Miguel	724	70	1,116	1
Sedgwick	600	79	382	2
Summit	270	47	641	2
Teller	2,139	285	2,996	5