

STATE OF COLORADO

# Abstract of Votes Cast

AT THE

## Primary Election

Held on the Twelfth Day of September,  
A. D. 1916

AND AT THE

## General Election

Held on the Seventh Day of November,  
A. D. 1916

FOR

Presidential Electors, Congressmen, and State,  
Legislative and District Officers

ALSO THE

Proposed Constitutional Amendments  
Initiated and Referred Bills

COMPILED FROM OFFICIAL RETURNS

BY

JAMES R. NOLAND  
Secretary of State

1916



DENVER, COLORADO  
THE C. F. HOECKEL BLANK BOOK AND LITHOGRAPHING CO.  
1916

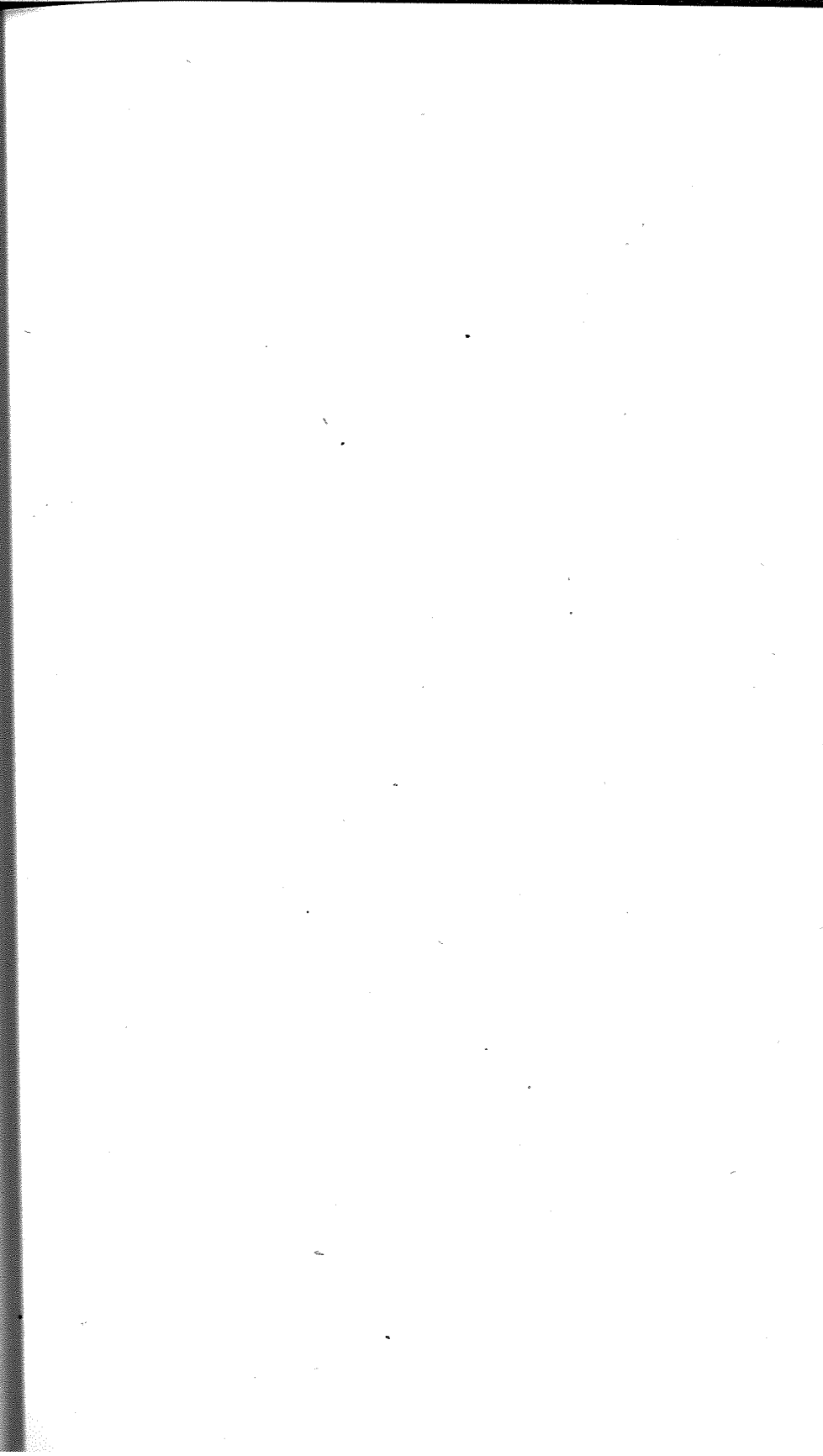
## ABSTRACT OF VOTES CAST AT

## FOR DISTRICT ATTORNEY THIRTEENTH JUDICIAL DISTRICT

COUNTIES	John R. Coen (Rep.)	Robert M. Work (Rep.)	Irving Van Bradt (Dem.)
Logan .....	634	425	410
Morgan .....	579	779	176
Phillips .....	130	193	123
Sedgwick .....	189	231	94
Washington .....	288	343	297
Yuma .....	199	360	410
	<hr/>	<hr/>	<hr/>
	2,019	2,331	1,510

Scattering, 6 Candidates. Total, 13 Votes.

Work over Coen, 312.



ABSTRACT OF VOTES CAST AT

FOR STATE SENATORS FROM THE FIRST  
SENATORIAL DISTRICT

City and County of Denver

William A. Carpenter, Republican.....	26,794
Marshall De Witt, Socialist.....	3,569
Edward V. Dunklee, Democrat.....	31,621
Morris Harrison, Liberal.....	802
Leon M. Hattenbach, Republican.....	28,228
Maurice M. Kern, Socialist.....	3,183
Houston H. Farris, Liberal.....	573
Peter E. Snow, Liberal.....	673
James C. Starkweather, Republican.....	29,720
John I. Tierney, Democrat.....	26,508
Fred Underhill, Socialist.....	3,405
John Red Williams, Democrat.....	24,910
Dunklee over Carpenter.....	4,827
Starweather over Carpenter.....	2,926
Hattenbach over Carpenter.....	1,434

FOR STATE SENATOR FROM THE SECOND  
SENATORIAL DISTRICT

COUNTY	Al S. Andrew (Rep.)	Perry C. Dunlap (Dem.)	Charles S. Tolman (Soc.)
Pueblo .....	6,370	7,656	2,181
	Dunlap over Andrew, 1,286		

**FOR STATE SENATOR FROM THE THIRD  
SENATORIAL DISTRICT**

COUNTY	C. A. Gore (Dem.)	A. E. Newman (Soc.)	L. A. Puffer (Rep.)
El Paso .....	5,843	850	8,384
	Puffer over Gore, 2,541		

**FOR STATE SENATOR FROM THE FOURTH  
SENATORIAL DISTRICT**

COUNTY	Casimiro Barela (Rep.)	Samuel W. DeBusk (Dem.)	Abraham Marians (Soc.)
Las Animas .....	3,972	4,373	210
	DeBusk over Barela, 401		

**FOR STATE SENATOR FROM THE FIFTH  
SENATORIAL DISTRICT**

COUNTY	Henry O. Andrew (Dem.)	Elbert Greenman (Colo.)	Howard B Millard (Rep.)	Edwin S. Agnew (Soc.)
Boulder .....	4,845	705	4,495	835
	Andrew over Millard, 350			

ABSTRACT OF VOTES CAST AT

FOR STATE SENATOR FROM THE SEVENTH SENATORIAL DISTRICT

COUNTY		D. P. Coldren (Dem.)		Robert E. Winbourn (Rep.)
Weld .....			6,721	6,356
	Coldren's majority 365.			

FOR STATE SENATOR FROM THE EIGHTH SENATORIAL DISTRICT

COUNTY		Wilbur F. Smith (Rep.)		Wesley Staley (Dem.)
Jefferson .....			2,178	3,016
	Staley's majority 838.			

FOR STATE SENATOR FROM THE NINTH SENATORIAL DISTRICT

COUNTY		George D. Cummings (Dem.)		Matt N. Lines (Rep.)	Paul W. Ross (Soc.)
Fremont .....			2,476	2,655	329
	Lines over Cummings, 179				

**FOR STATE SENATOR FROM THE ELEVENTH  
SENATORIAL DISTRICT**

COUNTIES	W. P. Dale (Rep.)	George Hetherington (Dem.)
Delta .....	1,991	2,088
Gunnison .....	1,071	1,168
	<hr/>	<hr/>
	3,062	3,256

Hetherington's majority 194

**FOR STATE SENATOR FROM THE THIRTEENTH  
SENATORIAL DISTRICT**

COUNTIES	Horace F. Mann (Rep.)	J. N. McWilliams (Dem.)
Jackson .....	166	283
Moffatt .....	755	469
Rio Blanco .....	488	595
Routt .....	937	1,775
	<hr/>	<hr/>
	2,346	3,122

McWilliams' majority 776

## ABSTRACT OF VOTES CAST AT

FOR STATE SENATOR FROM THE NINETEENTH  
SENATORIAL DISTRICT

COUNTIES	Rowe N. Pingrey (Rep.)	Geo. E. West (Dem.)
La Plata .....	1,645	1,911
Montezuma .....	691	1,094
	<hr/>	<hr/>
	2,336	3,005
West's majority 669		

FOR STATE SENATOR FROM THE TWENTY-FIRST  
SENATORIAL DISTRICT

COUNTIES	J. W. Deane (Rep.)	B. T. Napier (Dem.)
Eagle .....	456	1,016
Garfield .....	1,355	2,099
Pitkin .....	638	537
	<hr/>	<hr/>
	2,449	3,652
Napier's majority 1,203		



**FOR STATE SENATOR FROM THE TWENTY-SECOND  
SENATORIAL DISTRICT**

COUNTIES	Luke J. Kavanaugh (Dem.)	Agnes L. Riddle (Rep.)
Adams .....	1,462	1,510
Arapahoe .....	1,793	2,226
Morgan .....	1,642	2,093
	<hr/>	<hr/>
	4,897	5,829
Riddle's majority 932		

**FOR STATE SENATOR FROM THE TWENTY-THIRD  
SENATORIAL DISTRICT**

COUNTIES	Thos. C. Coltman (Dem.)	Reuben C. Inge (Rep.)
Crowley .....	968	953
Otero .....	3,661	2,744
	<hr/>	<hr/>
	4,629	2,697
Coltman's majority 932		

ABSTRACT OF VOTES CAST AT

FOR STATE SENATOR FROM THE TWENTY-FOURTH  
SENATORIAL DISTRICT

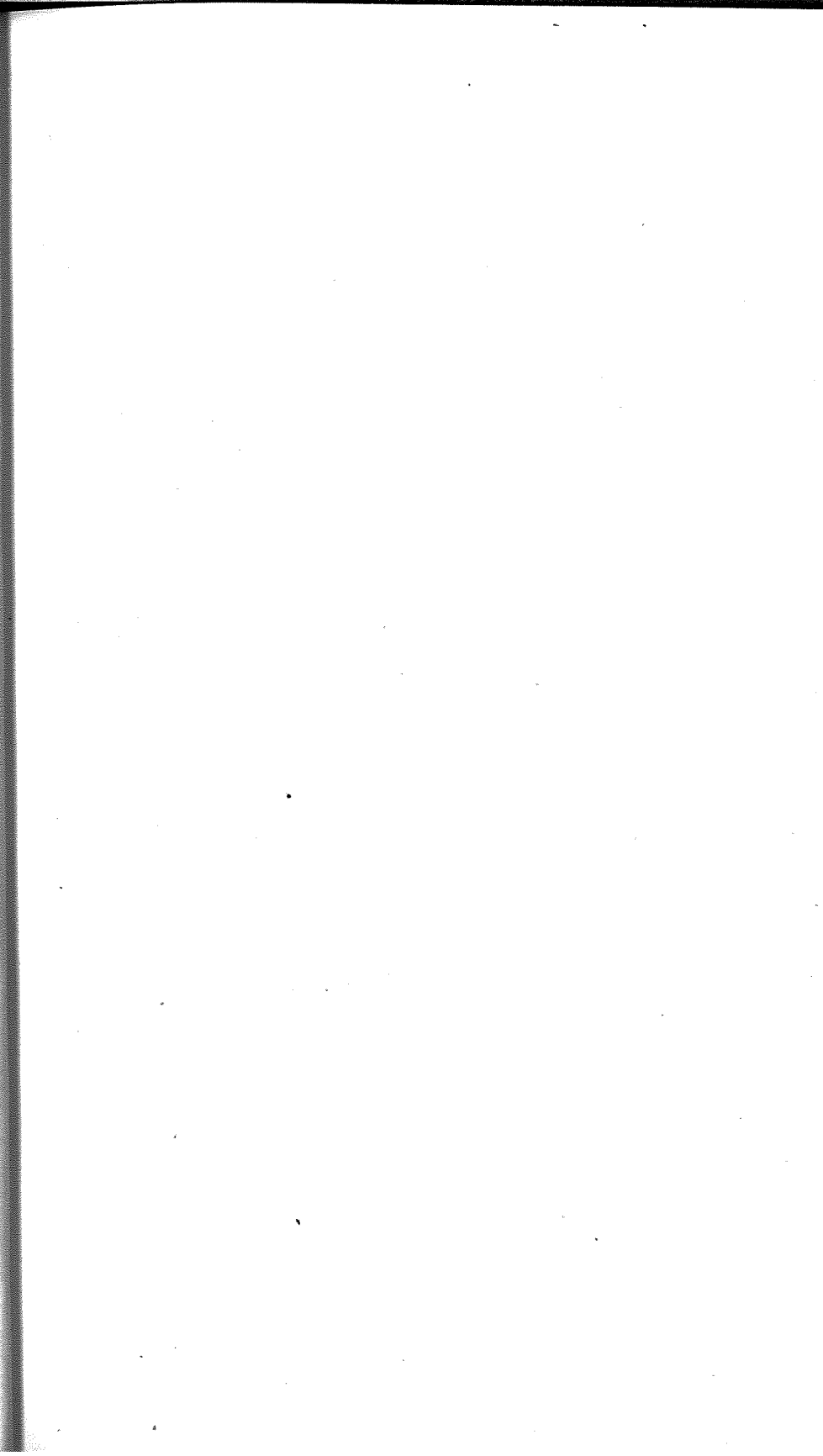
COUNTIES	William H. Adams (Dem.)	Daniel E. Newcomb (Rep.)
Alamosa .....	1,216	540
Conejos .....	1,632	756
	<hr/> 2,848	<hr/> 1,296

Adams' majority 1,552

FOR STATE SENATOR FROM THE TWENTY-SIXTH  
SENATORIAL DISTRICT

COUNTIES	Siewers Fincher (Dem.)	G. C. Stumm (Rep.)
Clear Creek .....	933	717
Gilpin .....	618	402
Grand .....	576	380
Summit .....	720	256
	<hr/> 2,847	<hr/> 1,755

Fincher's majority 1,092



**FOR  
REPRESENTATIVES IN THE TWENTY-FIRST GENERAL ASSEMBLY  
FROM THE COUNTY OF ADAMS**

COUNTY	H. G. Emery (Dem.)	A. H. Kramer (Rep.)
Adams .....	1,425	1,528
Kramer's majority 103		

**FOR  
REPRESENTATIVES IN THE TWENTY-FIRST GENERAL ASSEMBLY  
FROM THE COUNTY OF ALAMOSA**

COUNTY	Robert M. Born (Dem.)	William R. Pyke (Rep.)
Alamosa .....	1,117	601
Born's majority 516		

**FOR  
REPRESENTATIVES IN THE TWENTY-FIRST GENERAL ASSEMBLY  
FROM THE COUNTIES OF ARAPAHOE AND ELBERT**

COUNTIES	S. J. Hanks (Rep.)	John Roth (Dem.)
Arapahoe .....	1,884	2,068
Elbert .....	1,044	978
	2,928	3,046
Roth's majority 118		

**FOR  
REPRESENTATIVES IN THE TWENTY-FIRST GENERAL ASSEMBLY  
FROM THE COUNTY OF BOULDER**

COUNTIES	Alphonse Pierre Ardourel (Dem.)	L. E. Girard (Rep.)	J. H. Golden (Dem.)	Mathew A. Rowen (Rep.)	E. G. Lawrence (Soc.)	John C. Thompson (Soc.)
Boulder .....	5,148	4,814	4,566	4,322	872	700
Ardourel over Golden.....					582	
Girard over Golden.....					248	

**FOR  
REPRESENTATIVES IN THE TWENTY-FIRST GENERAL ASSEMBLY  
FROM THE COUNTY OF CHAFFEE**

COUNTY	Wm. C. Alexander (Rep.)	A. E. Wright (Dem.)
Chaffee.....	1,300	1,977
Wright's majority 677		

**FOR  
REPRESENTATIVES IN THE TWENTY-FIRST GENERAL ASSEMBLY  
FROM THE COUNTY OF CLEAR CREEK**

COUNTY	Herman E. Crist (Rep.)	Don J. McDonald (Dem.)
Clear Creek .....	843	881
McDonald's majority 38		

**FOR  
REPRESENTATIVES IN THE TWENTY-FIRST GENERAL ASSEMBLY  
FROM THE COUNTIES OF CROWLEY AND OTERO**

COUNTIES	M. E. Bashor (Rep.)	E. G. Herzberger (Dem.)	R. H. Mueller (Rep.)	Floyd P. Roberts (Dem.)
Crowley .....	1,134	796	801	934
Otero .....	2,634	3,448	2,713	2,642
	<hr/>	<hr/>	<hr/>	<hr/>
	3,768	4,244	3,514	3,576
Herzberger over Roberts.....				668
Bashor over Roberts.....				192

**FOR  
REPRESENTATIVES IN THE TWENTY-FIRST GENERAL ASSEMBLY  
FROM THE COUNTY OF CONEJOS**

COUNTY	Celestino Garcia (Rep.)	J. M. Velasquez (Dem.)
Conejos .....	1,428	1,138
	Garcia's majority 290	

**FOR  
REPRESENTATIVES IN THE TWENTY-FIRST GENERAL ASSEMBLY  
FROM THE COUNTY OF DELTA**

COUNTY	H. K. Ferguson (Dem.)	Robert F. Rockwell (Rep.)	W. H. Meek (Soc.)
Delta .....	1,954	2,096	433
	Rockwell over Ferguson, 142		

## FOR

REPRESENTATIVES IN THE TWENTY-FIRST GENERAL ASSEMBLY  
FROM THE CITY AND COUNTY OF DENVER

William Ackerman, Liberal .....	1,733
Frederick D. Anderson, Democrat.....	35,229
Thomas F. Azpell, Republican .....	26,701
Charles Baer, Republican .....	26,877
Edward B. Bartholic, Socialist.....	3,894
David W. Beechtel, Liberal.....	916
Josephh V. Benson, Republican.....	23,445
Morris Berkowitz, Socialist .....	3,696
Carroll M. Bills, Republican .....	27,443
George O. Brady, Socialist .....	3,640
Philip W. Brown, Socialist .....	3,811
Edmund Bruder, Liberal .....	867
William P. Byers, Liberal .....	1,140
William H. H. Cranmer, Republican.....	24,113
Clem F. Crowley, Democrat .....	30,799
Golding Fairfield, Republican .....	25,803
Harry G. Ferguson, Republican .....	21,274
James O. Garrett, Democrat .....	26,059
George M. Gilbert, Socialist .....	4,122
Robert Harris, Republican .....	27,052
Evangeline Heartz, Democrat.....	26,686
Albert Kiefer, Socialist .....	3,713
Albert H. Kirby, Socialist .....	3,321
William S. Kirby, Socialist .....	3,292
Charles T. Linton, Republican .....	26,894
Thomas F. Lynch, Liberal .....	1,230
John W. Maloney, Democrat .....	26,065
William H. B. Mason, Liberal.....	944
Arthur D. Meyer, Democrat .....	30,665
Harry McClintock, Liberal .....	1,008
Paul M. Nattermann, Liberal .....	696
John M. O'Brien, Democrat .....	25,292
William F. Pabst, Liberal.....	748
Theodore H. Proske, Democrat .....	28,736
Halsey M. Rhoads, Republican .....	22,081
Roy E. Roberts, Liberal .....	936
Edmund Rogers, Democrat .....	27,851
John Salmond, Liberal .....	754
Gudran Skiegstadt, Socialist .....	2,931

**FOR  
REPRESENTATIVES IN THE TWENTY-FIRST GENERAL ASSEMBLY  
FROM THE CITY AND COUNTY OF DENVER—Continued**

Thomas A. Smith, Socialist .....	3,363
Hugh R. Steele, Republican .....	27,680
Felix Thies, Liberal .....	2,137
Charles J. Vallero, Democrat .....	25,293
J. Earl Watson, Socialist .....	3,304
Jacob H. Weidman, Socialist .....	3,350
Robert Willison, Democrat .....	31,225
George P. Winters, Republican .....	26,788
George A. Yaeger, Democrat .....	26,147
Majority for Anderson over Azpell.....	8,528
Majority for Willison over Azpell.....	4,524
Majority for Crowley over Azpell.....	4,098
Majority for Meyers over Azpell.....	3,964
Majority for Proske over Azpell.....	2,035
Majority for Rogers over Azpell.....	1,150
Majority for Steele over Azpell.....	979
Majority for Bills over Azpell.....	742
Majority for Harris over Azpell.....	351
Majority for Linton over Azpell.....	193
Majority for Baer over Azpell.....	176
Majority for Winters over Azpell.....	87

**FOR  
REPRESENTATIVES IN THE TWENTY-FIRST GENERAL ASSEMBLY  
FROM THE COUNTY OF DOUGLAS**

COUNTY		Charles E. Crosswhite (Dem.)
Douglas .....	684	
	Crosswhite's majority, 22	

Hugh Taylor  
(Rep.)



**PART OF REPORT OF ELECTION AND APPROPRIATION COMMITTEE  
WHICH WAS ADOPTED BY THE TWENTY-FIRST GENERAL  
ASSEMBLY, WEDNESDAY, JANUARY 17TH, 1917.**

STATE OF COLORADO,  
HOUSE OF REPRESENTATIVES.

Denver, Colorado, January 17, 1917.

Mr. Speaker: Your Committee on Elections and Appointments, to which was referred the matters relating to the contest of elections in the city and county of Denver, state of Colorado, wherein James O. Garrett, Evangeline Hartz, James W. Maloney, John M. O'Brien, Charles Vallero and George A. Yaeger were contestors and Charles Baer, Carroll M. Bills, Robert Harris, Charles F. Linton, Hugh R. Steele and George P. Winters were contestees, all of which said contestors and contestees were candidates for a seat in the Twenty-first General Assembly of the state of Colorado at the last general election held November 7, A. D. 1916, has counted all of the ballots cast for the said contestors and contestees at said election and finds from such count the following, to wit:

Hugh R. Steele received 27,845 votes.  
Carroll M. Bills received 27,697 votes.  
Robert Harris received 27,383 votes.  
Evangeline Hartz received 27,111 votes.  
Charles T. Linton received 27,101 votes.  
Charles Baer received 27,058 votes.  
George P. Winters received 26,900 votes.  
James O. Garrett received 26,719 votes.  
George A. Yaeger received 26,234 votes.  
John W. Maloney received 26,172 votes.  
Charles J. Vallero received 25,421 votes.  
John M. O'Brien received 25,401 votes.

From this said finding of votes cast, we recommend that the following named persons are entitled to seats in the House of Representatives of the Twenty-first General Assembly of the state of Colorado, and that the aforesaid contest be determined in their favor: Hugh R. Steele, Carroll M. Bills, Robert Harris, Evangeline Hartz, Charles F. Linton and Charles Baer.

**FOR  
REPRESENTATIVES IN THE TWENTY-FIRST GENERAL ASSEMBLY  
FROM THE COUNTY OF EAGLE**

COUNTY	F. V. Burbank (Rep.)	Chas. Mayer (Dem.)
Eagle .....	713	814
Mayer's majority, 101		

**FOR  
REPRESENTATIVES IN THE TWENTY-FIRST GENERAL ASSEMBLY  
FROM THE COUNTY OF EL PASO**

L. M. Counts, Democrat .....	6,512
C. S. Gambrill, Democrat .....	6,631
Charles Mayhew, Socialist.....	990
Leslie W. Meyer, Democrat .....	5,538
Willis V. Sims, Republican-Progressive .....	7,272
Calvin B. Thompson, Socialist .....	869
F. E. Torbit, Republican-Progressive .....	7,283
A. M. Wilson, Republican-Progressive .....	7,789
Wilson over Gambrill .....	1,158
Torbit over Gambrill .....	652
Sims over Gambrill .....	641

**FOR  
REPRESENTATIVES IN THE TWENTY-FIRST GENERAL ASSEMBLY  
FROM THE COUNTY OF FREMONT**

COUNTY	George E. Colgate (Rep.)	Orion W. Locke (Dem.)	William C. Bloyed (Soc.)
Fremont .....	2,886	2,108	492
Colgate over Locke, 778.			

**FOR  
REPRESENTATIVES IN THE TWENTY-FIRST GENERAL ASSEMBLY  
FROM THE COUNTIES OF GARFIELD AND RIO BLANCO**

COUNTIES	Ernest Barlow (Dem.)	W. R. Lee (Rep.)
Garfield .....	1,788	1,473
Rio Blanco .....	533	535
	2,321	2,008

Barlow's majority, 313

**FOR  
REPRESENTATIVES IN THE TWENTY-FIRST GENERAL ASSEMBLY  
FROM THE COUNTY OF GILPIN**

COUNTY	William O. Jenkins (Dem.)	Robert Wilkinson (Rep.)
Gilpin .....	648	498

Jenkins' majority, 150

**FOR  
REPRESENTATIVES IN THE TWENTY-FIRST GENERAL ASSEMBLY  
FROM THE COUNTY OF GUNNISON**

COUNTY	Albert H. Good (Rep.)	T. J. Thompson (Dem.)
Gunnison .....	910	1,358

Thompson's majority, 448

**FOR  
 REPRESENTATIVES IN THE TWENTY-FIRST GENERAL ASSEMBLY  
 FROM THE COUNTIES OF HINSDALE, ARCHULETA AND MINERAL**

COUNTIES	W. E. Furrow (Dem.)	A. J. Nossaman (Rep.)
Hinsdale .....	150	115
Archuleta .....	657	563
Mineral .....	237	158
	<hr/>	<hr/>
	1,044	836

Furrow's majority, 208

**FOR  
 REPRESENTATIVES IN THE TWENTY-FIRST GENERAL ASSEMBLY  
 FROM THE COUNTIES OF HUERFANO AND COSTILLA**

COUNTIES	Gaspar Gallegos (Dem.)	J. P. Gallegos (Rep.)
Huerfano .....	2,292	2,151
Costilla .....	1,054	746
	<hr/>	<hr/>
	3,346	2,897

Gaspar Gallegos' majority, 449

**FOR  
REPRESENTATIVES IN THE TWENTY-FIRST GENERAL ASSEMBLY  
FROM THE COUNTY OF JEFFERSON**

COUNTY	Chas. E. Friend (Dem.)	John Grattan (Rep.)
Jefferson .....	2,725	2,337
Friend's majority, 388		

**FOR  
REPRESENTATIVES IN THE TWENTY-FIRST GENERAL ASSEMBLY  
FROM THE COUNTIES OF KIOWA AND BENT**

COUNTIES	Boon Best (Dem.)	A. T. Cherry (Rep.)
Kiowa .....	872	842
Bent .....	1,286	921
	2,158	1,763
Best's majority, 395		

**FOR  
REPRESENTATIVES IN THE TWENTY-FIRST GENERAL ASSEMBLY  
FROM THE COUNTY OF LAKE**

COUNTY	Fred L. Cretney (Rep.)	Ernest W. Owen (Dem.)
Lake .....	1,581	2,238
Owen's majority, 657		

**FOR  
REPRESENTATIVES IN THE TWENTY-FIRST GENERAL ASSEMBLY  
FROM THE COUNTY OF LA PLATA**

COUNTY	Thomas H. Kelley (Dem.)	John H. McDevitt, Jr. (Rep.)
La Plata .....	2,022	1,572
Kelley's majority, 450		

**FOR  
REPRESENTATIVES IN THE TWENTY-FIRST GENERAL ASSEMBLY  
FROM THE COUNTY OF LARIMER**

COUNTY	William E. Banks (Dem.)	P. D. Nelson (Rep.)	B. H. Bickerstaff (Soc.)
Larimer .....	3,537	3,460	539
Banks over Nelson 77			

**FOR  
REPRESENTATIVES IN THE TWENTY-FIRST GENERAL ASSEMBLY  
FROM THE COUNTY OF LAS ANIMAS**

COUNTY	F. T. Frisbey (Dem.)	Andres Lucero (Dem.)	Faustin T. Mascarenas (Rep.)	Fred E. Peterson (Soc.)	H. A. Schmidt (Rep.)
Las Animas .....	3,332	3,689	3,452	385	3,497
Frisbey over Schmidt .....					
335					
Lucero over Schmidt .....					
192					

**FOR  
REPRESENTATIVES IN THE TWENTY-FIRST GENERAL ASSEMBLY  
FROM THE COUNTIES OF LINCOLN, KIT CARSON AND CHEYENNE**

COUNTIES	William J. Rothwell (Rep.)	C. M. Somerville (Dem.)
Lincoln .....	1,320	1,381
Kit Carson .....	1,163	1,182
Cheyenne .....	682	638
	<hr/>	<hr/>
	3,165	3,201

Somerville's majority, 36

**FOR  
REPRESENTATIVES IN THE TWENTY-FIRST GENERAL ASSEMBLY  
FROM THE COUNTIES OF LOGAN AND SEDGWICK**

COUNTIES	Charles E. Fisher (Ind. and Non-Par.)	L. G. Giacomini (Dem.)	John C. Scott (Rep.)
Logan .....	1,076	1,569	1,476
Sedgwick .....	166	333	525
	<hr/>	<hr/>	<hr/>
	1,242	1,902	2,001

Scott over Giacomini, 99

ABSTRACT OF VOTES CAST AT

**FOR  
REPRESENTATIVES IN THE TWENTY-FIRST GENERAL ASSEMBLY  
FROM THE COUNTY OF MESA**

COUNTY	Benton Canon (Dem.)	E. M. Cline (Soc.)	Albert R. Sampliner (Rep.)
Mesa .....	3,662	844	2,523
Canon over Sampliner, 1,139			

**FOR  
REPRESENTATIVES IN THE TWENTY-FIRST GENERAL ASSEMBLY  
FROM THE COUNTIES OF MONTEZUMA AND DOLORES**

COUNTIES	S. C. Green (Rep.)	Clifford J. Laube (Dem.)
Montezuma .....	784	1,104
Dolores .....	75	242
		859
Laube's majority, 487		1,346

**FOR  
REPRESENTATIVES IN THE TWENTY-FIRST GENERAL ASSEMBLY  
FROM THE COUNTY OF MONTROSE**

COUNTY	W. J. Horton (Dem.)	S. B. Wonder (Rep.)	L. E. Berry ( )
Montrose .....	2,205	1,673	2
Horton over Wonder, 532			



**FOR  
REPRESENTATIVES IN THE TWENTY-FIRST GENERAL ASSEMBLY  
FROM THE COUNTIES OF MORGAN AND WASHINGTON**

COUNTIES	Samuel C. Farrar (Dem.)	Mark B. Gill (Rep.)
Morgan .....	1,621	2,091
Washington .....	1,475	1,059
	<hr/>	<hr/>
	3,096	3,150

Gill over Farrar, 54

**FOR  
REPRESENTATIVES IN THE TWENTY-FIRST GENERAL ASSEMBLY  
FROM THE COUNTY OF OURAY**

COUNTY	B. H. DuPraw (Dem.)	Dan A. Ferguson (Rep.)	Gordon Kimball (Rep.)
Ouray .....	761	1	632

Du Praw over Kimball, 129

ABSTRACT OF VOTES CAST AT

**FOR  
REPRESENTATIVES IN THE TWENTY-FIRST GENERAL ASSEMBLY  
FROM THE COUNTIES OF PHILLIPS AND YUMA**

COUNTIES	Charles E. Damewood (Rep.)	George B. Weir (Dem.)	W. J. Walsh (Soc.)
Phillips .....	543	747	..
Yuma .....	1,699	1,768	1
	<hr/>	<hr/>	<hr/>
	2,242	2,515	1

Weir over Damewood, 273

**FOR  
REPRESENTATIVES IN THE TWENTY-FIRST GENERAL ASSEMBLY  
FROM THE COUNTY OF PITKIN**

COUNTY	James N. Ashby (Dem.)	James M. Downing (Rep.)	J. E. Turner (Soc.)
Pitkin .....	521	573	155

Downing over Ashby, 52

**FOR  
REPRESENTATIVES IN THE TWENTY-FIRST GENERAL ASSEMBLY  
FROM THE COUNTIES OF PROWERS AND BACA**

COUNTIES	Allyn Cole (Rep.)	A. C. Davis (Dem.)
Prowers .....	2,199	1,559
Baca .....	1,199	865
	<hr/>	<hr/>
	3,398	2,424

Cole's majority 974

**FOR  
REPRESENTATIVES IN THE TWENTY-FIRST GENERAL ASSEMBLY  
FROM THE COUNTY OF PUEBLO**

Sterling Cawfield, Democrat .....	9,199
Charles A. Foster, Republican .....	7,473
M. E. Fuller, Democrat .....	7,187
Charles Medde, Republican .....	5,682
Thomas Mishou, Democrat .....	7,650
J. Arthur Phelps, Republican .....	6,918
F. M. Stokes, Republican .....	5,529
Mike Studzinski, Democrat .....	7,698
W. H. Champion, Socialist .....	1,586
Charles H. Hummell, Socialist .....	1,439
Vida McGrew, Socialist .....	1,232
James Pettijohn, Socialist .....	2,149
Cawfield over Fuller .....	2,012
Studzinski over Fuller .....	511
Mishou over Fuller .....	463
Foster over Fuller .....	286

**FOR  
REPRESENTATIVES IN THE TWENTY-FIRST GENERAL ASSEMBLY  
FROM THE COUNTY OF RIO GRANDE**

COUNTY	William A. Bronaugh (Dem.)	Charles Edman (Rep.)
Rio Grande .....	1,392	1,108
Bronaugh's majority 284		