

STATE OF COLORADO

Abstract of Votes Cast

AT THE

Primary Election

Held on the Twelfth Day of September,
A. D. 1916

AND AT THE

General Election

Held on the Seventh Day of November,
A. D. 1916

FOR

Presidential Electors, Congressmen, and State,
Legislative and District Officers

ALSO THE

Proposed Constitutional Amendments
Initiated and Referred Bills

COMPILED FROM OFFICIAL RETURNS

BY

JAMES R. NOLAND
Secretary of State

1916



DENVER, COLORADO
THE C. F. HOECKEL BLANK BOOK AND LITHOGRAPHING CO.
1916

FOR DISTRICT ATTORNEY ELEVENTH JUDICIAL DISTRICT

COUNTIES	Gilbert A. Walker (Rep.)	T. Lee Witcher (Dem.)
Chaffee	529	437
Custer	85	159
Fremont	855	430
Park	118	206
	1,587	1,232

Scattering, 3 Candidates. Total, 3 Votes.

FOR DISTRICT ATTORNEY TWELFTH JUDICIAL DISTRICT

COUNTIES	John I. Palmer (Rep.)	W. Scott Carroll (Rep.)	James F. Veerkamp (Dem.)
Alamosa	218	40	166
Conejos	865	233	78
Costilla	314	48	438
Mineral	121	52	43
Rio Grande	338	352	139
Saguache	232	100	292
	2,088	825	1,156

Palmer over Carroll, 1,263.

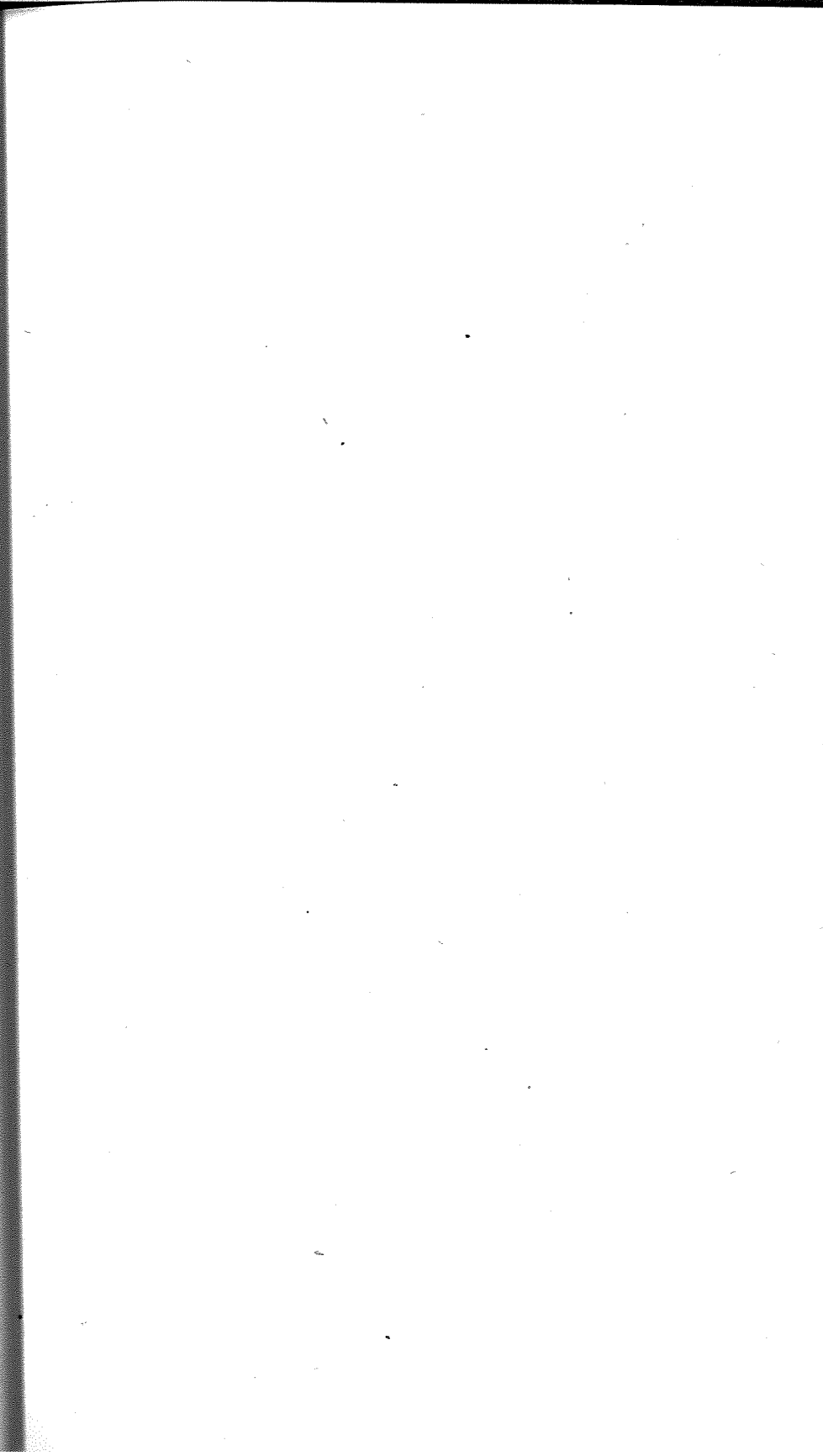
ABSTRACT OF VOTES CAST AT

FOR DISTRICT ATTORNEY THIRTEENTH JUDICIAL DISTRICT

COUNTIES	John R. Coen (Rep.)	Robert M. Work (Rep.)	Irving Van Bradt (Dem.)
Logan	634	425	410
Morgan	579	779	176
Phillips	130	193	123
Sedgwick	189	231	94
Washington	288	343	297
Yuma	199	360	410
	<hr/>	<hr/>	<hr/>
	2,019	2,331	1,510

Scattering, 6 Candidates. Total, 13 Votes.

Work over Coen, 312.



ABSTRACT OF VOTES CAST AT

FOR STATE SENATORS FROM THE FIRST
SENATORIAL DISTRICT

City and County of Denver

William A. Carpenter, Republican.....	26,794
Marshall De Witt, Socialist.....	3,569
Edward V. Dunklee, Democrat.....	31,621
Morris Harrison, Liberal.....	802
Leon M. Hattenbach, Republican.....	28,228
Maurice M. Kern, Socialist.....	3,183
Houston H. Farris, Liberal.....	573
Peter E. Snow, Liberal.....	673
James C. Starkweather, Republican.....	29,720
John I. Tierney, Democrat.....	26,508
Fred Underhill, Socialist.....	3,405
John Red Williams, Democrat.....	24,910
Dunklee over Carpenter.....	4,827
Starweather over Carpenter.....	2,926
Hattenbach over Carpenter.....	1,434

FOR STATE SENATOR FROM THE SECOND
SENATORIAL DISTRICT

COUNTY	Al S. Andrew (Rep.)	Perry C. Dunlap (Dem.)	Charles S. Tolman (Soc.)
Pueblo	6,370	7,656	2,131
	Dunlap over Andrew, 1,286		

**FOR STATE SENATOR FROM THE THIRD
SENATORIAL DISTRICT**

COUNTY	C. A. Gore (Dem.)	A. E. Newman (Soc.)	L. A. Puffer (Rep.)
El Paso	5,843	850	8,384
	Puffer over Gore, 2,541		

**FOR STATE SENATOR FROM THE FOURTH
SENATORIAL DISTRICT**

COUNTY	Casimiro Barela (Rep.)	Samuel W. DeBusk (Dem.)	Abraham Marians (Soc.)
Las Animas	3,972	4,373	210
	DeBusk over Barela, 401		

**FOR STATE SENATOR FROM THE FIFTH
SENATORIAL DISTRICT**

COUNTY	Henry O. Andrew (Dem.)	Elbert Greenman (Colo.)	Howard B Millard (Rep.)	Edwin S. Agnew (Soc.)
Boulder	4,845	705	4,495	835
	Andrew over Millard, 350			

ABSTRACT OF VOTES CAST AT

FOR STATE SENATOR FROM THE SEVENTH SENATORIAL DISTRICT

COUNTY		D. P. Coldren (Dem.)		Robert E. Winbourn (Rep.)
Weld		6,721	6,356	
	Coldren's majority 365.			

FOR STATE SENATOR FROM THE EIGHTH SENATORIAL DISTRICT

COUNTY		Wilbur F. Smith (Rep.)		Wesley Staley (Dem.)
Jefferson		2,178	3,016	
	Staley's majority 838.			

FOR STATE SENATOR FROM THE NINTH SENATORIAL DISTRICT

COUNTY		George D. Cummings (Dem.)		Paul W. Ross (Soc.)
Fremont		2,476	2,655	329
	Lines over Cummings, 179			

**FOR STATE SENATOR FROM THE ELEVENTH
SENATORIAL DISTRICT**

COUNTIES	W. P. Dale (Rep.)	George Hetherington (Dem.)
Delta	1,991	2,088
Gunnison	1,071	1,168
	<hr/>	<hr/>
	3,062	3,256

Hetherington's majority 194

**FOR STATE SENATOR FROM THE THIRTEENTH
SENATORIAL DISTRICT**

COUNTIES	Horace F. Mann (Rep.)	J. N. McWilliams (Dem.)
Jackson	166	283
Moffatt	755	469
Rio Blanco	488	595
Routt	937	1,775
	<hr/>	<hr/>
	2,346	3,122

McWilliams' majority 776

ABSTRACT OF VOTES CAST AT

FOR STATE SENATOR FROM THE NINETEENTH
SENATORIAL DISTRICT

COUNTIES	Rowe N. Pingrey (Rep.)	Geo. E. West (Dem.)
La Plata	1,645	1,911
Montezuma	691	1,094
	<hr/>	<hr/>
	2,336	3,005
West's majority 669		

FOR STATE SENATOR FROM THE TWENTY-FIRST
SENATORIAL DISTRICT

COUNTIES	J. W. Deane (Rep.)	B. T. Napier (Dem.)
Eagle	456	1,016
Garfield	1,355	2,099
Pitkin	638	537
	<hr/>	<hr/>
	2,449	3,652
Napier's majority 1,203		

**FOR STATE SENATOR FROM THE TWENTY-SECOND
SENATORIAL DISTRICT**

COUNTIES	Luke J. Kavanaugh (Dem.)	Agnes L. Riddle (Rep.)
Adams	1,462	1,510
Arapahoe	1,793	2,226
Morgan	1,642	2,093
	<hr/>	<hr/>
	4,897	5,829

Riddle's majority 932

**FOR STATE SENATOR FROM THE TWENTY-THIRD
SENATORIAL DISTRICT**

COUNTIES	Thos. C. Coltman (Dem.)	Reuben C. Inge (Rep.)
Crowley	968	953
Otero	3,661	2,744
	<hr/>	<hr/>
	4,629	2,697

Coltman's majority 932

ABSTRACT OF VOTES CAST AT

FOR STATE SENATOR FROM THE TWENTY-FOURTH
SENATORIAL DISTRICT

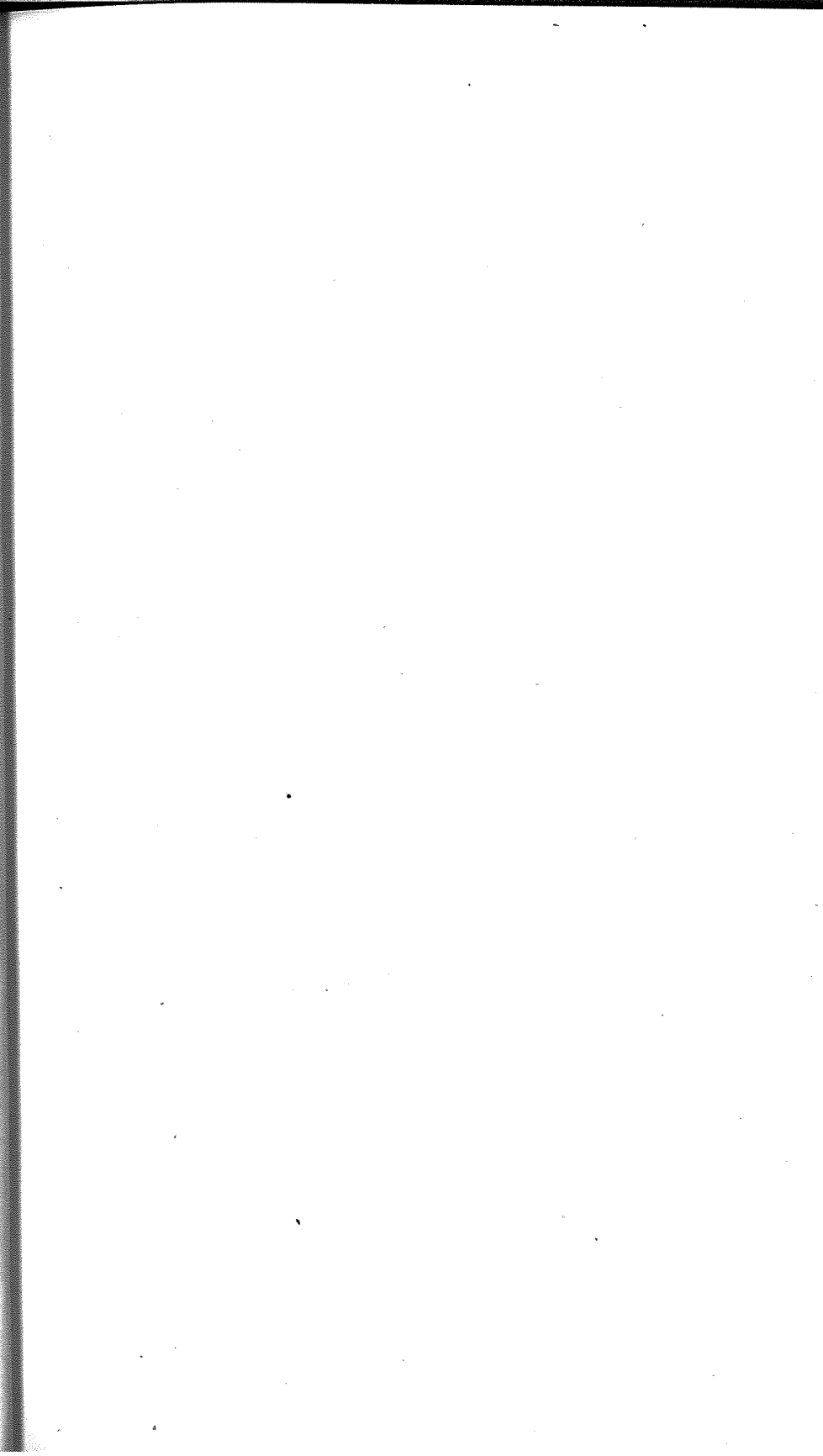
COUNTIES	William H. Adams (Dem.)	Daniel E. Newcomb (Rep.)
Alamosa	1,216	540
Conejos	1,632	756
	2,848	1,296

Adams' majority 1,552

FOR STATE SENATOR FROM THE TWENTY-SIXTH
SENATORIAL DISTRICT

COUNTIES	Siewers Fincher (Dem.)	G. C. Stumm (Rep.)
Clear Creek	933	717
Gilpin	618	402
Grand	576	380
Summit	720	256
	2,847	1,755

Fincher's majority 1,092



**FOR
REPRESENTATIVES IN THE TWENTY-FIRST GENERAL ASSEMBLY
FROM THE COUNTY OF ADAMS**

COUNTY	H. G. Emery (Dem.)	A. H. Kramer (Rep.)
Adams	1,425	1,528
Kramer's majority 103		

**FOR
REPRESENTATIVES IN THE TWENTY-FIRST GENERAL ASSEMBLY
FROM THE COUNTY OF ALAMOSA**

COUNTY	Robert M. Born (Dem.)	William R. Pyke (Rep.)
Alamosa	1,117	601
Born's majority 516		

**FOR
REPRESENTATIVES IN THE TWENTY-FIRST GENERAL ASSEMBLY
FROM THE COUNTIES OF ARAPAHOE AND ELBERT**

COUNTIES	S. J. Hanks (Rep.)	John Roth (Dem.)
Arapahoe	1,884	2,068
Elbert	1,044	978
	<hr/> 2,928	<hr/> 3,046
Roth's majority 118		

**FOR
REPRESENTATIVES IN THE TWENTY-FIRST GENERAL ASSEMBLY
FROM THE COUNTY OF BOULDER**

COUNTIES	Alphonse Pierre Ardourel (Dem.)	L. E. Girard (Rep.)	J. H. Golden (Dem.)	Mathew A. Rowen (Rep.)	E. G. Lawrence (Soc.)	John C. Thompson (Soc.)
Boulder	5,148	4,814	4,566	4,322	872	700
Ardourel over Golden.....					582	
Girard over Golden.....					248	

**FOR
REPRESENTATIVES IN THE TWENTY-FIRST GENERAL ASSEMBLY
FROM THE COUNTY OF CHAFFEE**

COUNTY	Wm. C. Alexander (Rep.)	A. E. Wright (Dem.)
Chaffee.....	1,300	1,977
Wright's majority 677		

**FOR
REPRESENTATIVES IN THE TWENTY-FIRST GENERAL ASSEMBLY
FROM THE COUNTY OF CLEAR CREEK**

COUNTY	Herman E. Crist (Rep.)	Don J. McDonald (Dem.)
Clear Creek	843	881
McDonald's majority 38		

**FOR
REPRESENTATIVES IN THE TWENTY-FIRST GENERAL ASSEMBLY
FROM THE COUNTIES OF CROWLEY AND OTERO**

COUNTIES	M. E. Bashor (Rep.)	E. G. Herzberger (Dem.)	R. H. Mueller (Rep.)	Floyd P. Roberts (Dem.)
Crowley	1,134	796	801	934
Otero	2,634	3,448	2,713	2,642
	3,768	4,244	3,514	3,576
Herzberger over Roberts.....				668
Bashor over Roberts.....				192

**FOR
REPRESENTATIVES IN THE TWENTY-FIRST GENERAL ASSEMBLY
FROM THE COUNTY OF CONEJOS**

COUNTY	Celestino Garcia (Rep.)	J. M. Velasquez (Dem.)
Conejos	1,428	1,138
	Garcia's majority 290	

**FOR
REPRESENTATIVES IN THE TWENTY-FIRST GENERAL ASSEMBLY
FROM THE COUNTY OF DELTA**

COUNTY	H. K. Ferguson (Dem.)	Robert F. Rockwell (Rep.)	W. H. Meek (Soc.)
Delta	1,954	2,096	433
	Rockwell over Ferguson, 142		

FOR
REPRESENTATIVES IN THE TWENTY-FIRST GENERAL ASSEMBLY
FROM THE CITY AND COUNTY OF DENVER

William Ackerman, Liberal	1,733
Frederick D. Anderson, Democrat.....	35,229
Thomas F. Azpell, Republican	26,701
Charles Baer, Republican	26,877
Edward B. Bartholic, Socialist.....	3,894
David W. Beechtel, Liberal.....	916
Josephh V. Benson, Republican.....	23,445
Morris Berkowitz, Socialist	3,696
Carroll M. Bills, Republican	27,443
George O. Brady, Socialist	3,640
Philip W. Brown, Socialist	3,811
Edmund Bruder, Liberal	867
William P. Byers, Liberal	1,140
William H. H. Cranmer, Republican.....	24,113
Clem F. Crowley, Democrat	30,799
Golding Fairfield, Republican	25,803
Harry G. Ferguson, Republican	21,274
James O. Garrett, Democrat	26,059
George M. Gilbert, Socialist	4,122
Robert Harris, Republican	27,052
Evangeline Heartz, Democrat.....	26,686
Albert Kiefer, Socialist	3,713
Albert H. Kirby, Socialist	3,321
William S. Kirby, Socialist	3,292
Charles T. Linton, Republican	26,894
Thomas F. Lynch, Liberal	1,230
John W. Maloney, Democrat	26,065
William H. B. Mason, Liberal.....	944
Arthur D. Meyer, Democrat	30,665
Harry McClintock, Liberal	1,008
Paul M. Nattermann, Liberal	696
John M. O'Brien, Democrat	25,292
William F. Pabst, Liberal.....	748
Theodore H. Proske, Democrat	28,736
Halsey M. Rhoads, Republican	22,081
Roy E. Roberts, Liberal	936
Edmund Rogers, Democrat	27,851
John Salmond, Liberal	754
Gudran Skiegstadt, Socialist	2,931

**FOR
REPRESENTATIVES IN THE TWENTY-FIRST GENERAL ASSEMBLY
FROM THE CITY AND COUNTY OF DENVER—Continued**

Thomas A. Smith, Socialist	3,363
Hugh R. Steele, Republican	27,680
Felix Thies, Liberal	2,137
Charles J. Vallero, Democrat	25,293
J. Earl Watson, Socialist	3,304
Jacob H. Weidman, Socialist	3,350
Robert Willison, Democrat	31,225
George P. Winters, Republican	26,788
George A. Yaeger, Democrat	26,147
Majority for Anderson over Azpell.....	8,528
Majority for Willison over Azpell.....	4,524
Majority for Crowley over Azpell.....	4,098
Majority for Meyers over Azpell.....	3,964
Majority for Proske over Azpell.....	2,035
Majority for Rogers over Azpell.....	1,150
Majority for Steele over Azpell.....	979
Majority for Bills over Azpell.....	742
Majority for Harris over Azpell.....	351
Majority for Linton over Azpell.....	193
Majority for Baer over Azpell.....	176
Majority for Winters over Azpell.....	87

**FOR
REPRESENTATIVES IN THE TWENTY-FIRST GENERAL ASSEMBLY
FROM THE COUNTY OF DOUGLAS**

COUNTY	
Douglas	684
Crosswhite's majority, 22	

Charles E. Crosswhite
(Dem.)

Hugh Taylor
(Rep.)

**PART OF REPORT OF ELECTION AND APPROPRIATION COMMITTEE
WHICH WAS ADOPTED BY THE TWENTY-FIRST GENERAL
ASSEMBLY, WEDNESDAY, JANUARY 17TH, 1917.**

STATE OF COLORADO,
HOUSE OF REPRESENTATIVES.

Denver, Colorado, January 17, 1917.

Mr. Speaker: Your Committee on Elections and Appointments, to which was referred the matters relating to the contest of elections in the city and county of Denver, state of Colorado, wherein James O. Garrett, Evangeline Hertz, James W. Maloney, John M. O'Brien, Charles Vallero and George A. Yaeger were contestors and Charles Baer, Carroll M. Bills, Robert Harris, Charles F. Linton, Hugh R. Steele and George P. Winters were contestees, all of which said contestors and contestees were candidates for a seat in the Twenty-first General Assembly of the state of Colorado at the last general election held November 7, A. D. 1916, has counted all of the ballots cast for the said contestors and contestees at said election and finds from such count the following, to wit:

Hugh R. Steele received 27,845 votes.
Carroll M. Bills received 27,697 votes.
Robert Harris received 27,383 votes.
Evangeline Hertz received 27,111 votes.
Charles T. Linton received 27,101 votes.
Charles Baer received 27,058 votes.
George P. Winters received 26,900 votes.
James O. Garrett received 26,719 votes.
George A. Yaeger received 26,234 votes.
John W. Maloney received 26,172 votes.
Charles J. Vallero received 25,421 votes.
John M. O'Brien received 25,401 votes.

From this said finding of votes cast, we recommend that the following named persons are entitled to seats in the House of Representatives of the Twenty-first General Assembly of the state of Colorado, and that the aforesaid contest be determined in their favor: Hugh R. Steele, Carroll M. Bills, Robert Harris, Evangeline Hertz, Charles F. Linton and Charles Baer.

ABSTRACT OF VOTES CAST AT

**FOR
REPRESENTATIVES IN THE TWENTY-FIRST GENERAL ASSEMBLY
FROM THE COUNTY OF EAGLE**

COUNTY	F. V. Burbank (Rep.)	Chas. Mayer (Dem.)
Eagle	713	814
Mayer's majority, 101		

**FOR
REPRESENTATIVES IN THE TWENTY-FIRST GENERAL ASSEMBLY
FROM THE COUNTY OF EL PASO**

L. M. Counts, Democrat	6,512
C. S. Gambrill, Democrat	6,631
Charles Mayhew, Socialist.....	990
Leslie W. Meyer, Democrat	5,538
Willis V. Sims, Republican-Progressive	7,272
Calvin B. Thompson, Socialist	869
F. E. Torbit, Republican-Progressive	7,283
A. M. Wilson, Republican-Progressive	7,789
Wilson over Gambrill	1,158
Torbit over Gambrill	652
Sims over Gambrill	641

**FOR
REPRESENTATIVES IN THE TWENTY-FIRST GENERAL ASSEMBLY
FROM THE COUNTY OF FREMONT**

COUNTY	George E. Colgate (Rep.)	Orion W. Locke (Dem.)	William C. Bloyed (Soc.)
Fremont	2,886	2,108	492
Colgate over Locke, 778.			

**FOR
REPRESENTATIVES IN THE TWENTY-FIRST GENERAL ASSEMBLY
FROM THE COUNTIES OF GARFIELD AND RIO BLANCO**

COUNTIES	Ernest Barlow (Dem.)	W. R. Lee (Rep.)
Garfield	1,788	1,473
Rio Blanco	533	535
	2,321	2,008

Barlow's majority, 313

**FOR
REPRESENTATIVES IN THE TWENTY-FIRST GENERAL ASSEMBLY
FROM THE COUNTY OF GILPIN**

COUNTY	William O. Jenkins (Dem.)	Robert Wilkinson (Rep.)
Gilpin	648	498

Jenkins' majority, 150

**FOR
REPRESENTATIVES IN THE TWENTY-FIRST GENERAL ASSEMBLY
FROM THE COUNTY OF GUNNISON**

COUNTY	Albert H. Good (Rep.)	T. J. Thompson (Dem.)
Gunnison	910	1,358

Thompson's majority, 448

**FOR
REPRESENTATIVES IN THE TWENTY-FIRST GENERAL ASSEMBLY
FROM THE COUNTIES OF HINSDALE, ARCHULETA AND MINERAL**

COUNTIES	W. E. Furrow (Dem.)	A. J. Nossaman (Rep.)
Hinsdale	150	115
Archuleta	657	563
Mineral	237	158
	1,044	836

Furrow's majority, 208

**FOR
REPRESENTATIVES IN THE TWENTY-FIRST GENERAL ASSEMBLY
FROM THE COUNTIES OF HUERFANO AND COSTILLA**

COUNTIES	Gaspar Gallegos (Dem.)	J. P. Gallegos (Rep.)
Huerfano	2,292	2,151
Costilla	1,054	746
	3,346	2,897

Gaspar Gallegos' majority, 449

**FOR
REPRESENTATIVES IN THE TWENTY-FIRST GENERAL ASSEMBLY
FROM THE COUNTY OF JEFFERSON**

COUNTY	Chas. E. Friend (Dem.)	John Grattan (Rep.)
Jefferson	2,725	2,337
Friend's majority, 388		

**FOR
REPRESENTATIVES IN THE TWENTY-FIRST GENERAL ASSEMBLY
FROM THE COUNTIES OF KIOWA AND BENT**

COUNTIES	Boon Best (Dem.)	A. T. Cherry (Rep.)
Kiowa	872	842
Bent	1,286	921
	2,158	1,763
Best's majority, 395		

**FOR
REPRESENTATIVES IN THE TWENTY-FIRST GENERAL ASSEMBLY
FROM THE COUNTY OF LAKE**

COUNTY	Fred L. Cretney (Rep.)	Ernest W. Owen (Dem.)
Lake	1,581	2,238
Owen's majority, 657		

**FOR
REPRESENTATIVES IN THE TWENTY-FIRST GENERAL ASSEMBLY
FROM THE COUNTY OF LA PLATA**

COUNTY	Thomas H. Kelley (Dem.)	John H. McDevitt, Jr. (Rep.)
La Plata	2,022	1,572
Kelley's majority, 450		

**FOR
REPRESENTATIVES IN THE TWENTY-FIRST GENERAL ASSEMBLY
FROM THE COUNTY OF LARIMER**

COUNTY	William E. Banks (Dem.)	P. D. Nelson (Rep.)	B. H. Bickerstaff (Soc.)
Larimer	3,537	3,460	539
Banks over Nelson 77			

**FOR
REPRESENTATIVES IN THE TWENTY-FIRST GENERAL ASSEMBLY
FROM THE COUNTY OF LAS ANIMAS**

COUNTY	F. T. Frisbey (Dem.)	Andres Lucero (Dem.)	Faustin T. Mascarenas (Rep.)	Fred E. Peterson (Soc.)	H. A. Schmidt (Rep.)
Las Animas	3,332	3,689	3,452	385	3,497
Frisbey over Schmidt					
335					
Lucero over Schmidt					
192					

**FOR
REPRESENTATIVES IN THE TWENTY-FIRST GENERAL ASSEMBLY
FROM THE COUNTIES OF LINCOLN, KIT CARSON AND CHEYENNE**

COUNTIES	William J. Rothwell (Rep.)	C. M. Somerville (Dem.)
Lincoln	1,320	1,381
Kit Carson	1,163	1,182
Cheyenne	682	638
	<hr/>	<hr/>
	3,165	3,201

Somerville's majority, 36

**FOR
REPRESENTATIVES IN THE TWENTY-FIRST GENERAL ASSEMBLY
FROM THE COUNTIES OF LOGAN AND SEDGWICK**

COUNTIES	Charles E. Fisher (Ind. and Non-Par.)	L. G. Giacomini (Dem.)	John C. Scott (Rep.)
Logan	1,076	1,569	1,476
Sedgwick	166	333	525
	<hr/>	<hr/>	<hr/>
	1,242	1,902	2,001

Scott over Giacomini, 99

ABSTRACT OF VOTES CAST AT

**FOR
REPRESENTATIVES IN THE TWENTY-FIRST GENERAL ASSEMBLY
FROM THE COUNTY OF MESA**

COUNTY	Benton Canon (Dem.)	E. M. Cline (Soc.)	Albert R. Sampliner (Rep.)
Mesa	3,662	844	2,523
Canon over Sampliner, 1,139			

**FOR
REPRESENTATIVES IN THE TWENTY-FIRST GENERAL ASSEMBLY
FROM THE COUNTIES OF MONTEZUMA AND DOLORES**

COUNTIES	S. C. Green (Rep.)	Clifford J. Laube (Dem.)
Montezuma	784	1,104
Dolores	75	242
	859	1,346
Laube's majority, 487		

**FOR
REPRESENTATIVES IN THE TWENTY-FIRST GENERAL ASSEMBLY
FROM THE COUNTY OF MONTROSE**

COUNTY	W. J. Horton (Dem.)	S. B. Wonder (Rep.)	L. E. Berry (Rep.)
Montrose	2,205	1,673	2
Horton over Wonder, 532			

**FOR
REPRESENTATIVES IN THE TWENTY-FIRST GENERAL ASSEMBLY
FROM THE COUNTIES OF MORGAN AND WASHINGTON**

COUNTIES	Samuel C. Farrar (Dem.)	Mark B. Gill (Rep.)
Morgan	1,621	2,091
Washington	1,475	1,059
	<hr/>	<hr/>
	3,096	3,150

Gill over Farrar, 54

**FOR
REPRESENTATIVES IN THE TWENTY-FIRST GENERAL ASSEMBLY
FROM THE COUNTY OF OURAY**

COUNTY	B. H. DuPraw (Dem.)	Dan A. Ferguson (Rep.)	Gordon Kimball (Rep.)
Ouray	761	1	632

Du Praw over Kimball, 129

ABSTRACT OF VOTES CAST AT

**FOR
REPRESENTATIVES IN THE TWENTY-FIRST GENERAL ASSEMBLY
FROM THE COUNTIES OF PHILLIPS AND YUMA**

COUNTIES	Charles E. Damewood (Rep.)	George B. Weir (Dem.)	W. J. Walsh (Soc.)
Phillips	543	747	..
Yuma	1,699	1,768	1
	<hr/>	<hr/>	<hr/>
	2,242	2,515	1

Weir over Damewood, 273

**FOR
REPRESENTATIVES IN THE TWENTY-FIRST GENERAL ASSEMBLY
FROM THE COUNTY OF PITKIN**

COUNTY	James N. Ashby (Dem.)	James M. Downing (Rep.)	J. E. Turner (Soc.)
Pitkin	521	573	155

Downing over Ashby, 52

**FOR
REPRESENTATIVES IN THE TWENTY-FIRST GENERAL ASSEMBLY
FROM THE COUNTIES OF PROWERS AND BACA**

COUNTIES	Allyn Cole (Rep.)	A. C. Davis (Dem.)
Prowers	2,199	1,559
Baca	1,199	865
	<hr/>	<hr/>
	3,398	2,424

Cole's majority 974