

STATE OF COLORADO

Abstract of Votes Cast

AT THE

Primary Election

Held on the Twelfth Day of September,
A. D. 1916

AND AT THE

General Election

Held on the Seventh Day of November,
A. D. 1916

FOR

Presidential Electors, Congressmen, and State,
Legislative and District Officers

ALSO THE

Proposed Constitutional Amendments
Initiated and Referred Bills

COMPILED FROM OFFICIAL RETURNS

BY

JAMES R. NOLAND
Secretary of State

1916



DENVER, COLORADO
THE C. F. HOECKEL BLANK BOOK AND LITHOGRAPHING CO.
1916

FOR REGENTS OF THE UNIVERSITY OF COLORADO

COUNTY	William J. King (Rep.)	Anna Wolcott Valle (Rep.)	William F. Harlow (Rep.)	Thomas T. Barnard (Dem.)	Clifford W. Mills (Dem.)
Adams	150	239	178	374	625
Alamosa	141	138	68	141	123
Arapahoe	574	686	374	438	441
Archuleta	155	119	78	202	166
Baca	215	164	126	263	240
Bent	134	118	87	189	154
Boulder	1,313	1,102	1,600	1,476	1,468
Chaffee	376	340	191	375	351
Cheyenne	301	252	167	217	211
Clear Creek	167	170	102	292	227
Conejos	567	432	226	73	52
Costilla	285	241	100	418	349
Crowley	334	287	210	331	301
Custer	54	57	26	108	106
Delta	978	833	417	382	377
Denver	8,095	11,911	8,009	5,662	5,961
Dolores	3	2	1	96	93
Douglas	104	109	67	93	77
Eagle	244	229	120	313	286
Elbert	117	94	77	178	134
El Paso	2,494	2,339	1,357	794	715
Fremont	651	597	248	347	324
Garfield	387	433	260	780	688
Gilpin	126	172	77	136	142
Grand	80	71	42	92	78
Gunnison	242	217	121	249	237
Hinsdale	34	34	15	74	74
Huerfano	1,020	302	699	244	198
Jackson	57	56	21	25	17
Jefferson	991	797	730	339	325
Kiowa	100	88	54	324	292

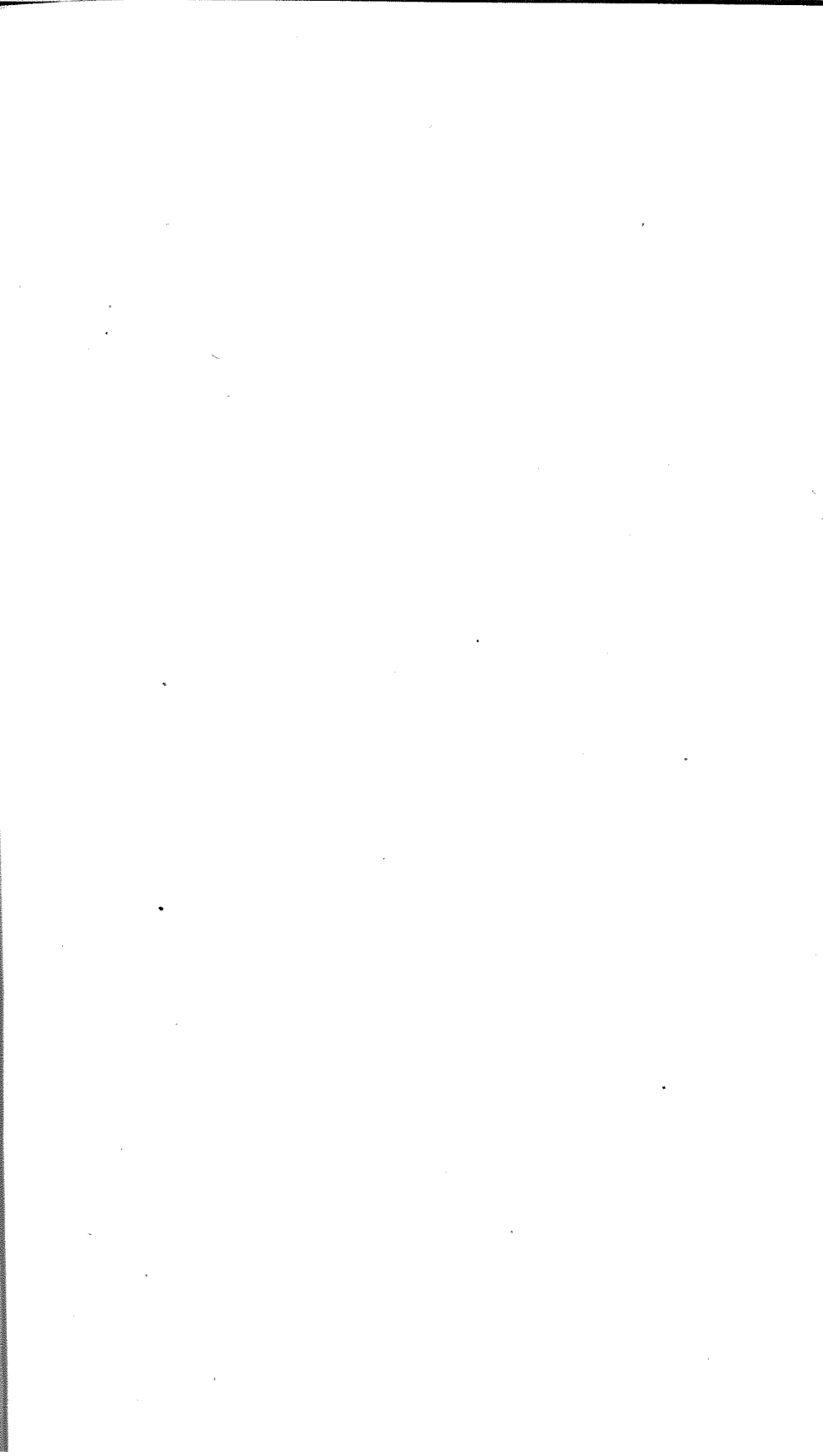
FOR REGENTS OF THE UNIVERSITY OF COLORADO—Continued

COUNTY	William J. Kings (Rep.)	Anna Wolcott Valle (Rep.)	William P. Harlow (Rep.)	Thomas T. Barnard (Dem.)	Clifford W. Mills (Dem.)
Kit Carson.....	425	336	246	333	327
Lake	598	495	373	667	648
La Plata.....	197	247	102	668	568
Larimer	1,055	967	672	434	405
Las Animas.....	2,038	1,434	873	628	526
Lincoln	515	384	297	468	468
Logan	582	421	252	424	364
Mesa	819	774	459	524	416
Mineral	83	86	41	38	37
Moffat	170	157	112	194	164
Montezuma	117	123	83	411	452
Montrose	438	389	171	569	547
Morgan	563	531	289	131	135
Otero	560	509	333	302	269
Ouray	132	147	88	321	283
Park	79	84	32	187	176
Phillips	160	127	77	112	83
Pitkin	67	65	27	354	304
Prowers	438	347	252	246	236
Pueblo	1,914	1,738	1,412	2,667	2,397
Rio Blanco.....	100	86	56	116	113
Rio Grande.....	328	331	139	104	95
Routt	377	354	237	337	343
Saguache	253	121	96	219	207
San Juan	56	73	32	71	69
San Miguel.....	198	197	90	268	246
Sedgwick	209	171	81	73	75
Summit	63	67	32	220	218
Teller	615	610	362	1,662	1,310
Washington	300	256	173	235	192

ABSTRACT OF VOTES CAST AT

FOR REGENTS OF THE UNIVERSITY OF COLORADO—Continued

COUNTY	William J. King (Rep.)	Anna Wolcott Vaile (Rep.)	William F. Harlow (Rep.)	Thomas T. Barnard (Dem.)	Clifford W. Mills (Dem.)
Weld	2,303	2,108	1,507	929	865
Yuma	267	271	185	363	313
	<hr/>	<hr/>	<hr/>	<hr/>	<hr/>
	36,502	36,635	24,929	29,260	27,683
Scattering, 6 Candidates. Total, 58 Votes.					
Vaile over Harlow.....					11,706
King over Harlow.....					11,573



**FOR CONGRESSMAN FIRST CONGRESSIONAL DISTRICT
(Denver County)**

William N. Vaile, Republican.....	4,948
William H. Dickson, Republican	4,138
Alvin H. Pickens, Republican	1,392
James H. Brown, Republican.....	2,106
Halsted L. Ritter, Republican	4,237
Amedee L. Fribourg, Republican	1,028
Henry Bruce Teller, Democrat.....	4,434
Benjamin C. Hilliard, Democrat.....	4,510
Hattie H. Howard, Progressive.....	41
Sidney Eastwood, Republican.....	694
Vaile over Ritter.....	711
Hilliard over Teller.....	76

FOR CONGRESSMAN SECOND CONGRESSIONAL DISTRICT

COUNTIES	Charles B. Timberlake (Rep.)	R. E. Jones (Dem.)	Henry A. Drumm (Dem.)	Ralph R. Drennen (Prog.)
Adams	381	556	323	2
Arapahoe	1,051	362	289	..
Boulder	2,365	643	1,581	10
Cheyenne	500	179	118	..
Douglas	174	73	46	..
Elbert	187	163	79	2
El Paso	3,979	615	365	33
Kit Carson	676	268	147	2
Larimer	1,834	289	244	13
Lincoln	767	524	138	2
Logan	987	326	191	6
Morgan	1,054	170	55	8
Phillips	306	91	45	2
Sedgwick	329	60	41	1
Washington	615	215	99	1
Weld	3,561	615	497	5
Yuma	476	292	147	..
	19,242	5,441	4,405	87

Scattering, 7 Candidates. Total, 9 Votes.

Jones over Drumm.....1,036

ABSTRACT OF VOTES CAST AT

FOR CONGRESSMAN THIRD CONGRESSIONAL DISTRICT

COUNTIES	Geo. E. McClelland (Rep.)	W. O. Peterson (Rep.)	Fred D. Stanley (Rep.)	Edward Keating (Dem.)	William G. Francis (Prog.)
Alamosa	40	45	211	196	..
Baca	163	88	97	414	1
Bent	95	156	11	265	1
Clear Creek	507	31	15	333	..
Conejos	312	344	366	91	1
Costilla	98	32	243	402	1
Crowley	238	316	74	446	..
Custer	59	20	16	160	..
Fremont	422	323	183	401	1
Gilpin	240	29	26	195	..
Huerfano	395	667	79	296	5
Jefferson	1,131	357	208	462	14
Kiowa	83	50	17	395	1
Las Animas	2,155	596	314	744	22
Mineral	69	24	55	43	..
Otero	404	439	121	341	1
Park	77	28	20	237	..
Prowers	372	349	64	310	1
Pueblo	736	2,572	248	2,661	16
Rio Grande	213	205	188	122	..
Saguache	136	106	52	316	..
Teller	687	204	194	1,767	5
	8,632	6,881	2,802	10,597	70

Scattering, 5 Candidates. Total, 10 Votes.

McClelland over Peterson.....1,751

FOR CONGRESSMAN FOURTH CONGRESSIONAL DISTRICT

COUNTIES	Henry J. Baird (Rep.)	Edward T. Taylor (Dem.)
Archuleta	196	258
Chaffee	450	479
Delta	1,085	521
Dolores	5	174
Eagle	343	487
Garfield	619	1,101
Grand	101	117
Gunnison	320	303
Hinsdale	41	109
Jackson	80	31
Lake	824	891
La Plata	298	908
Mesa	1,101	716
Moffat	245	279
Montezuma	194	700
Montrose	536	655
Ouray	200	462
Pitkin	91	543
Rio Blanco	125	324
Routt	535	477
San Juan	88	100
San Miguel	245	351
Summit	100	320
	7,822	10,206

Scattering, 7 Candidates. Total, 28 Votes.

ABSTRACT OF VOTES CAST AT

**FOR DISTRICT JUDGE SECOND JUDICIAL DISTRICT
To Fill Vacancy
(Denver County)**

Greeley W. Whitford, Republican.....	6,643
Thomas D. Cobbey, Republican.....	3,853
Geo. Q. Richmond, Republican	2,715
Peter L. Palmer, Republican.....	4,193
John I. Mullins, Democrat.....	4,042
William D. Wright, Democrat.....	3,195
Frederick W. Sanborn, Democrat.....	2,020
Scattering, 1 Candidate. Total, 1 Vote.	
Whitford over Palmer.....	2,450
Mullins over Wright.....	847

**FOR DISTRICT JUDGE THIRD JUDICIAL DISTRICT
To Fill Vacancy**

COUNTIES	Granby Hillier (Rep.)	A. C. McChesney (Dem.)
Baca	377	329
Bent	210	219
Huerfano	1,005	268
Las Animas	2,293	745
Prowers	674	284
	4,559	1,845

**FOR DISTRICT JUDGE ELEVENTH JUDICIAL DISTRICT
To Fill Vacancy**

COUNTIES	James L. Cooper (Rep.)	George H. Wilkes (Dem.)
Chaffee	512	430
Custer	96	141
Fremont	964	398
Park	126	197
	<hr/>	<hr/>
	1,698	1,166

ABSTRACT OF VOTES CAST AT

FOR DISTRICT ATTORNEY FIRST JUDICIAL DISTRICT

COUNTIES	Flor Ashbaugh (Rep.)	Arthur D. Quaintance (Rep.)	John C. Vivian (Rep.)	Samuel W. Johnson (Dem.)
Adams	59	108	178	780
Arapahoe	992	163	176	597
Clear Creek	144	119	121	332
Gilpin	220	49	61	185
Grand	77	50	26	115
Jefferson	253	788	904	457
	1,745	1,277	1,466	2,466

Scattering, 3 Candidates. Total, 4 Votes.

Ashbaugh over Vivian, 279.

FOR DISTRICT ATTORNEY SECOND JUDICIAL DISTRICT
(Denver County)

John W. Gillespie, Republican	6,921
Horace G. Benson, Republican	4,352
Louis J. Stark, Republican	2,728
David J. Davies, Republican	3,577
Phillip Hornbein, Democrat	3,867
William E. Foley, Democrat	5,347

Scattering, 1 Candidate. Total, 1 Vote.

Gillespie over Benson

Foley over Hornbein

FOR DISTRICT ATTORNEY THIRD JUDICIAL DISTRICT

COUNTIES	Joseph W. Hawley (Rep.)	George H. Blickhahn (Rep.)	Allen M. Lambright (Dem.)
Baca	201	138	331
Bent	191	46	265
Huerfano	151	1,201	284
Las Animas	2,476	752	673
Prowers	401	269	295
	<hr/>	<hr/>	<hr/>
	3,420	2,406	1,848

Scattering, 1 Candidate. Total, 1 Vote.

Hawley over Blickhahn, 1,014.

FOR DISTRICT ATTORNEY FOURTH JUDICIAL DISTRICT

COUNTIES	Willis L. Strachan (Rep.)	Michael W. Purcell (Dem.)	Willis L. Strachan (Prog.)
Cheyenne	438	301
Douglas	158	111
Elbert	164	209
El Paso	4,080	886	42
Kit Carson	602	391
Lincoln	743	625
Teller	835	1,382
	<hr/>	<hr/>	<hr/>
	7,020	3,905	42

Scattering, 11 Candidates. Total, 49 Votes.

ABSTRACT OF VOTES CAST AT

FOR DISTRICT ATTORNEY FIFTH JUDICIAL DISTRICT

COUNTIES	Michael F. Ryan (Rep.)	Quentin D. Bonner (Dem.)	Barney L. Whatley (Dem.)	Frank E. Purple (Dem.)
Eagle	346	216	275	25
Lake	881	530	648	139
Summit	95	190	198	20
	<hr/>	<hr/>	<hr/>	<hr/>
	1,322	936	1,121	184

Scattering, 1 Candidate. Total, 1 Vote.

Whatley over Bonner, 185.

FOR DISTRICT ATTORNEY SIXTH JUDICIAL DISTRICT

COUNTIES	Alonzo M. Emigh (Rep.)	Frederick C. Perkins (Rep.)	George W. Lane (Dem.)	John J. Downey (Dem.)
Archuleta	349	35	203	83
Dolores	2	4	93	111
La Plata	180	250	600	495
Montezuma	104	112	345	527
San Juan	55	56	84	45
	<hr/>	<hr/>	<hr/>	<hr/>
	690	457	1,325	1,266
Emigh over Perkins.....				233
Lane over Downey.....				59

FOR DISTRICT ATTORNEY SEVENTH JUDICIAL DISTRICT

COUNTIES	John L. Silvers (Rep.)	William Welser (Dem.)
Delta	1,272	496
Gunnison	328	347
Hinsdale	48	97
Mesa	1,300	746
Montrose	620	696
Ouray	212	428
San Miguel	267	313
	4,047	3,123

Scattering, 2 Candidates. Total, 3 Votes.

FOR DISTRICT ATTORNEY EIGHTH JUDICIAL DISTRICT

COUNTY	Fancher Sarchet (Rep.)	Victor E. Keyes (Rep.)	Russell W. Fleming (Dem.)	Ledru R. Rhodes (Dem.)
Boulder	1,020	1,352	1,762	479
Jackson	58	36	22	7
Larimer	1,574	525	489	166
Weld	881	3,293	862	267
	3,533	5,206	3,135	919

Scattering, 1 Candidate. Total, 7 Votes.

Keyes over Sarchet..... 1,673
 Rhodes over Fleming..... 2,216

ABSTRACT OF VOTES CAST AT

FOR DISTRICT ATTORNEY NINTH JUDICIAL DISTRICT

COUNTY	John L. Noonan (Rep.)	Frank Delaney (Dem.)	Edwin C. Kingsbury (Dem.)
Garfield	771	840	442
Moffat	268	235	51
Pitkin	84	368	226
Rio Blanco	127	277	13
Routt	557	393	124
	<hr/>	<hr/>	<hr/>
	1,807	2,113	856

Delaney over Kingsbury, 1,257.

FOR DISTRICT ATTORNEY TENTH JUDICIAL DISTRICT

COUNTY	Charles M. Rose (Rep.)	Charles B. Hughes (Dem.)
Crowley	513	434
Kiowa	139	388
Otero	781	344
Pueblo	2,654	3,149
	<hr/>	<hr/>
	4,087	4,315

FOR DISTRICT ATTORNEY ELEVENTH JUDICIAL DISTRICT

COUNTIES	Gilbert A. Walker (Rep.)	T. Lee Witcher (Dem.)
Chaffee	529	437
Custer	85	159
Fremont	855	430
Park	118	206
	<hr/>	<hr/>
	1,587	1,232

Scattering, 3 Candidates. Total, 3 Votes.

FOR DISTRICT ATTORNEY TWELFTH JUDICIAL DISTRICT

COUNTIES	John I. Palmer (Rep.)	W. Scott Carroll (Rep.)	James F. Veerkamp (Dem.)
Alamosa	218	40	166
Conejos	865	233	78
Costilla	314	48	438
Mineral	121	52	43
Rio Grande	338	352	139
Saguache	232	100	292
	<hr/>	<hr/>	<hr/>
	2,088	825	1,156

Palmer over Carroll, 1,263.

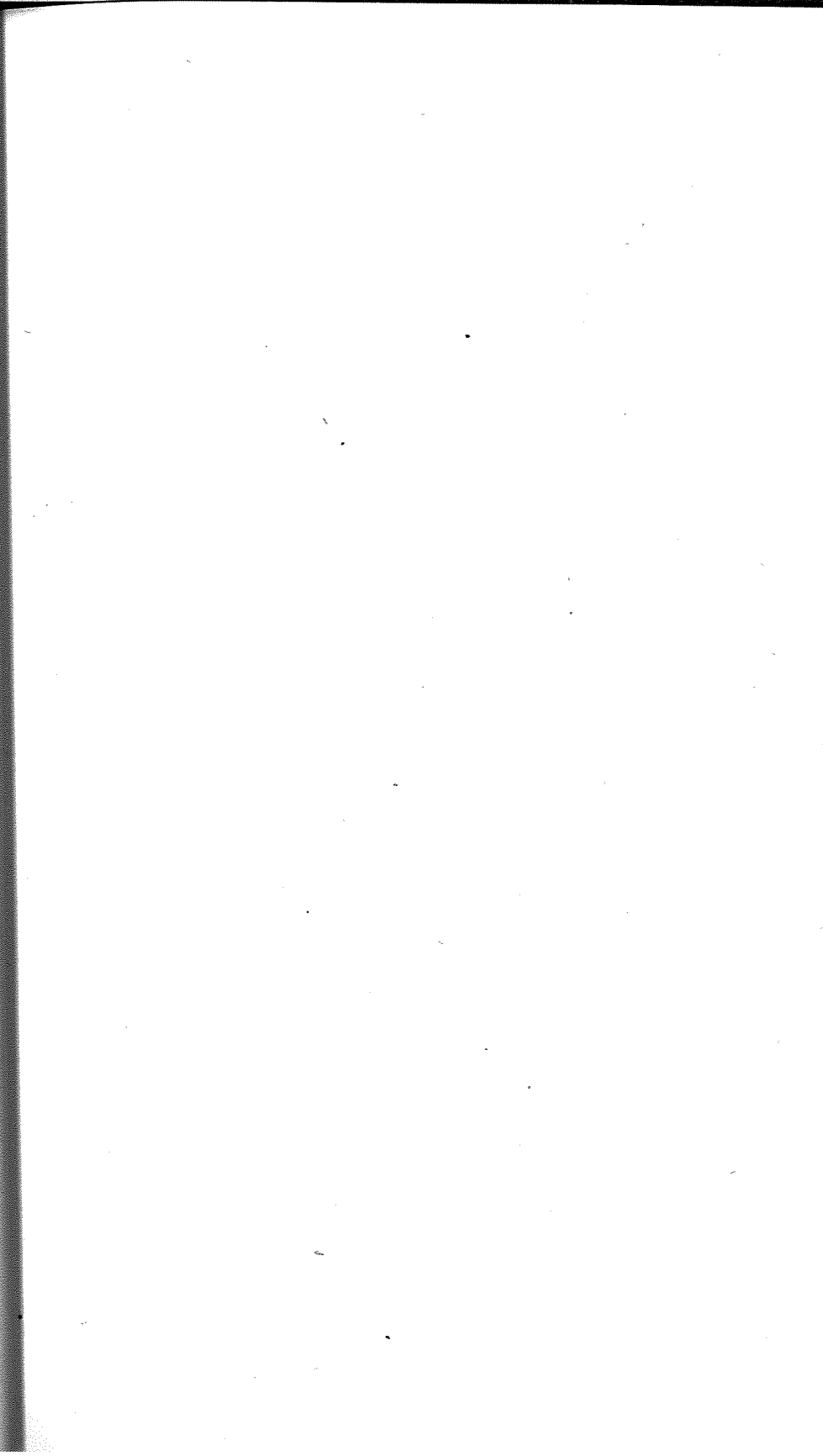
ABSTRACT OF VOTES CAST AT

FOR DISTRICT ATTORNEY THIRTEENTH JUDICIAL DISTRICT

COUNTIES	John R. Coen (Rep.)	Robert M. Work (Rep.)	Irving Van Bradt (Dem.)
Logan	634	425	410
Morgan	579	779	176
Phillips	130	193	123
Sedgwick	189	231	94
Washington	288	343	297
Yuma	199	360	410
	<hr/>	<hr/>	<hr/>
	2,019	2,331	1,510

Scattering, 6 Candidates. Total, 13 Votes.

Work over Coen, 312.



ABSTRACT OF VOTES CAST AT

FOR STATE SENATORS FROM THE FIRST
SENATORIAL DISTRICT

City and County of Denver

William A. Carpenter, Republican.....	26,794
Marshall De Witt, Socialist.....	3,569
Edward V. Dunklee, Democrat.....	31,621
Morris Harrison, Liberal.....	802
Leon M. Hattenbach, Republican.....	28,228
Maurice M. Kern, Socialist.....	3,183
Houston H. Farris, Liberal.....	573
Peter E. Snow, Liberal.....	673
James C. Starkweather, Republican.....	29,720
John I. Tierney, Democrat.....	26,508
Fred Underhill, Socialist.....	3,405
John Red Williams, Democrat.....	24,910
Dunklee over Carpenter.....	4,827
Starweather over Carpenter.....	2,926
Hattenbach over Carpenter.....	1,434

FOR STATE SENATOR FROM THE SECOND
SENATORIAL DISTRICT

COUNTY	Al S. Andrew (Rep.)	Perry C. Dunlap (Dem.)	Charles S. Tolman (Soc.)
Pueblo	6,370	7,656	2,181
	Dunlap over Andrew, 1,286		

**FOR STATE SENATOR FROM THE THIRD
SENATORIAL DISTRICT**

COUNTY	C. A. Gore (Dem.)	A. E. Newman (Soc.)	L. A. Puffer (Rep.)
El Paso	5,843	850	8,384
	Puffer over Gore, 2,541		

**FOR STATE SENATOR FROM THE FOURTH
SENATORIAL DISTRICT**

COUNTY	Casimiro Barela (Rep.)	Samuel W. DeBusk (Dem.)	Abraham Marians (Soc.)
Las Animas	3,972	4,373	210
	DeBusk over Barela, 401		

**FOR STATE SENATOR FROM THE FIFTH
SENATORIAL DISTRICT**

COUNTY	Henry O. Andrew (Dem.)	Elbert Greenman (Colo.)	Howard B Millard (Rep.)	Edwin S. Agnew (Soc.)
Boulder	4,845	705	4,495	835
	Andrew over Millard, 350			

ABSTRACT OF VOTES CAST AT

FOR STATE SENATOR FROM THE SEVENTH SENATORIAL DISTRICT

COUNTY		D. P. Coldren (Dem.)		Robert E. Winbourn (Rep.)
Weld			6,721	6,356
	Coldren's majority 365.			

FOR STATE SENATOR FROM THE EIGHTH SENATORIAL DISTRICT

COUNTY		Wilbur F. Smith (Rep.)		Wesley Staley (Dem.)
Jefferson			2,178	3,016
	Staley's majority 838.			

FOR STATE SENATOR FROM THE NINTH SENATORIAL DISTRICT

COUNTY		George D. Cummings (Dem.)		Matt N. Lines (Rep.)	Paul W. Ross (Soc.)
Fremont			2,476	2,655	329
	Lines over Cummings, 179				

**FOR STATE SENATOR FROM THE ELEVENTH
SENATORIAL DISTRICT**

COUNTIES	W. P. Dale (Rep.)	George Hetherington (Dem.)
Delta	1,991	2,088
Gunnison	1,071	1,168
	<hr/>	<hr/>
	3,062	3,256

Hetherington's majority 194

**FOR STATE SENATOR FROM THE THIRTEENTH
SENATORIAL DISTRICT**

COUNTIES	Horace F. Mann (Rep.)	J. N. McWilliams (Dem.)
Jackson	166	283
Moffatt	755	469
Rio Blanco	488	595
Routt	937	1,775
	<hr/>	<hr/>
	2,346	3,122

McWilliams' majority 776

ABSTRACT OF VOTES CAST AT

FOR STATE SENATOR FROM THE NINETEENTH
SENATORIAL DISTRICT

COUNTIES	Rowe N. Pingrey (Rep.)	Geo. E. West (Dem.)
La Plata	1,645	1,911
Montezuma	691	1,094
	<hr/>	<hr/>
	2,336	3,005
West's majority 669		

FOR STATE SENATOR FROM THE TWENTY-FIRST
SENATORIAL DISTRICT

COUNTIES	J. W. Deane (Rep.)	B. T. Napier (Dem.)
Eagle	456	1,016
Garfield	1,355	2,099
Pitkin	638	537
	<hr/>	<hr/>
	2,449	3,652
Napier's majority 1,203		

**FOR STATE SENATOR FROM THE TWENTY-SECOND
SENATORIAL DISTRICT**

COUNTIES	Luke J. Kavanaugh (Dem.)	Agnes L. Riddle (Rep.)
Adams	1,462	1,510
Arapahoe	1,793	2,226
Morgan	1,642	2,093
	<hr/>	<hr/>
	4,897	5,829

Riddle's majority 932

**FOR STATE SENATOR FROM THE TWENTY-THIRD
SENATORIAL DISTRICT**

COUNTIES	Thos. C. Coltman (Dem.)	Reuben C. Inge (Rep.)
Crowley	968	953
Otero	3,661	2,744
	<hr/>	<hr/>
	4,629	2,697

Coltman's majority 932

ABSTRACT OF VOTES CAST AT

FOR STATE SENATOR FROM THE TWENTY-FOURTH
SENATORIAL DISTRICT

COUNTIES	William H. Adams (Dem.)	Daniel E. Newcomb (Rep.)
Alamosa	1,216	540
Conejos	1,632	756
	<hr/> 2,848	<hr/> 1,296
Adams' majority 1,552		

FOR STATE SENATOR FROM THE TWENTY-SIXTH
SENATORIAL DISTRICT

COUNTIES	Siewers Fincher (Dem.)	G. C. Stumm (Rep.)
Clear Creek	933	717
Gilpin	618	402
Grand	576	380
Summit	720	256
	<hr/> 2,847	<hr/> 1,755
Fincher's majority 1,092		

