

STATE OF COLORADO

Abstract of Votes Cast

AT THE

Primary Election

Held on the Twelfth Day of September,
A. D. 1916

AND AT THE

General Election

Held on the Seventh Day of November,
A. D. 1916

FOR

Presidential Electors, Congressmen, and State,
Legislative and District Officers

ALSO THE

Proposed Constitutional Amendments
Initiated and Referred Bills

COMPILED FROM OFFICIAL RETURNS

BY

JAMES R. NOLAND
Secretary of State

1916



DENVER, COLORADO
THE C. F. HOECKEL BLANK BOOK AND LITHOGRAPHING CO.
1916

ABSTRACT OF VOTES CAST AT

FOR SECRETARY OF STATE

COUNTY	John E. Ramer (Rep.)	William F. Allen (Dem.)
Adams	361	713
Alamosa	223	176
Arapahoe	1,009	600
Archuleta	217	236
Baca	352	384
Bent	225	237
Boulder	2,356	1,885
Chaffee	544	465
Cheyenne	482	308
Clear Creek	274	327
Conejos	650	89
Costilla	363	426
Crowley	547	441
Custer	90	141
Delta	1,564	512
Denver	14,515	7,190
Dolores	6	136
Douglas	166	115
Eagle	379	399
Elbert	178	219
El Paso	3,733	1,007
Fremont	905	422
Garfield	704	998
Gilpin	213	177
Grand	114	110
Gunnison	378	345
Hinsdale	44	85
Huerfano	1,180	277
Jackson	97	29
Jefferson	1,515	384
Kiowa	152	371

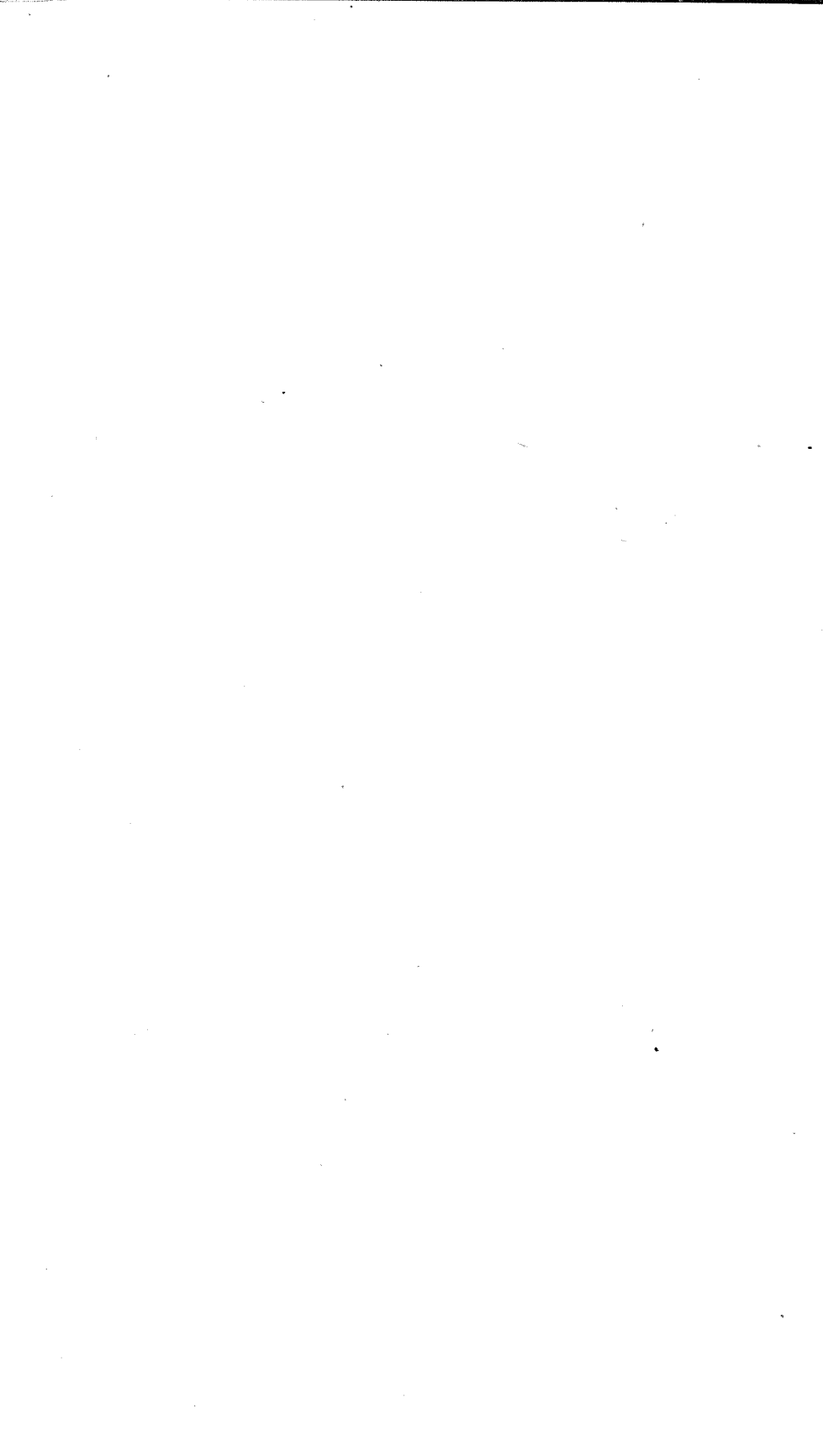
FOR SECRETARY OF STATE—Continued

COUNTY	John E. Ramer (Rep.)	William F. Allen (Dem.)
Kit Carson	657	419
Lake	928	840
La Plata	327	826
Larimer	2,082	560
Las Animas	2,603	738
Lincoln	787	644
Logan	848	529
Mesa	1,384	655
Mineral	128	44
Moffat	277	227
Montezuma	205	612
Montrose	646	700
Morgan	959	201
Otero	870	369
Ouray	226	397
Park	123	211
Phillips	256	134
Pitkin	94	430
Prowers	677	317
Pueblo	2,730	2,908
Rio Blanco	139	169
Rio Grande	518	129
Routt	606	454
Saguache	242	292
San Juan	91	86
San Miguel	292	328
Sedgwick	303	103
Summit	100	283
Teller	998	1,737
Washington	529	308

ABSTRACT OF VOTES CAST AT
FOR SECRETARY OF STATE—Continued

COUNTY	John E. Ramer (Rep.)	William F. Allen (Dem.)
Weld	3,517	1,122
Yuma	425	421
	<hr/>	<hr/>
	58,103	36,397

Scattering, 6 Candidates. Total, 34 Votes.



FOR AUDITOR OF STATE

COUNTY	Olie Thorson (Rep.)	H. H. Harbaugh (Rep.)	Arthur M. Stong (Rep.)	Charles H. Leckenby (Dem.)	Lloyd M. Davis (Dem.)
Adams	100	128	137	484	434
Alamosa	56	36	189	122	71
Arapahoe	391	285	339	400	251
Archuleta	80	44	118	172	64
Baca	143	75	129	161	196
Bent	104	71	53	169	100
Boulder	1,297	536	589	467	1,973
Chaffee	190	189	168	314	213
Cheyenne	228	86	153	182	132
Clear Creek	122	64	113	260	132
Conejos	360	88	364	65	26
Costilla	141	29	191	371	91
Crowley	222	122	200	213	251
Custer	34	20	37	114	47
Delta	563	286	498	305	235
Denver	6,214	4,557	4,313	4,954	2,726
Dolores	2	1	2	79	68
Douglas	81	29	58	83	35
Eagle	318	44	74	266	161
Elbert	79	46	63	113	130
El Paso	1,702	1,128	1,097	502	161
Fremont	279	344	259	306	141
Garfield	651	116	111	726	346
Gilpin	96	54	84	101	109
Grand	39	35	48	87	25
Gunnison	231	71	123	221	142
Hinsdale	25	21	5	61	34
Huerfano	964	107	76	188	112
Jackson	43	20	27	25	6
Jefferson	449	727	357	347	141
Kiowa	65	29	52	246	153

FOR AUDITOR OF STATE—Continued

COUNTY	Olle Thorson (Rep.)	H. H. Harbough (Rep.)	Arthur M. Strong (Rep.)	Charles H. Leckenby (Dem.)	Roy M. Davis (Dem.)
Kit Carson	314	129	222	220	212
Lake	734	114	228	551	376
La Plata	99	94	137	626	287
Larimer	718	521	545	310	277
Las Animas	1,631	462	670	433	332
Lincoln	348	161	270	388	288
Logan	347	189	279	332	231
Mesa	766	318	416	461	218
Mineral	65	26	48	34	15
Moffat	156	51	71	204	75
Montezuma	53	83	76	495	208
Montrose	202	277	154	429	316
Morgan	527	215	229	106	103
Otero	384	172	298	236	154
Ouray	73	81	79	257	190
Park	66	24	37	124	116
Phillips	103	51	87	79	57
Pitkin	58	18	22	363	144
Prowers	255	167	233	165	158
Pueblo	861	1,365	806	1,864	1,386
Rio Blanco	87	29	40	165	46
Rio Grande	213	127	195	95	41
Routt	250	142	206	477	72
Saguache	127	66	98	177	142
San Juan	23	50	31	79	26
San Miguel	105	76	111	189	174
Sedgwick	135	81	95	64	40
Summit	50	20	44	244	75
Teller	326	262	430	846	987
Washington	218	98	192	168	149

ABSTRACT OF VOTES CAST AT

FOR AUDITOR OF STATE—Continued

COUNTY	Olie Thorson (Rep.)	H. H. Harbough (Rep.)	Arthur M. Stronge (Rep.)	Charles H. Leckenby (Dem.)	Roy M. Davis (Dem.)
Weld	668	2,735	786	565	543
Yuma	187	126	127	269	187
	<hr/>	<hr/>	<hr/>	<hr/>	<hr/>
	25,418	17,718	17,288	23,119	16,731

Scattering, 7 Candidates. Total, 32 Votes.

Thorson over Harbaugh, 7,700

Leckenby over Davis, 6,388



ABSTRACT OF VOTES CAST AT

FOR STATE TREASURER

COUNTY	Harry E. Mulnix (Rep.)	Robert H. Higgins (Dem.)
Adams	290	678
Alamosa	197	167
Arapahoe	977	618
Archuleta	209	236
Baca	344	361
Bent	208	233
Boulder	2,199	1,865
Chaffee	541	470
Cheyenne	455	307
Clear Creek	281	335
Conejos	580	84
Costilla	345	420
Crowley	551	450
Custer	89	145
Delta	1,398	507
Denver	14,181	7,168
Dolores	14	137
Douglas	169	114
Eagle	390	389
Elbert	168	219
El Paso	3,625	1,002
Fremont	900	420
Garfield	721	997
Gilpin	212	181
Grand	112	105
Gunnison	361	344
Hinsdale	46	84
Huerfano	1,056	285
Jackson	89	26
Jefferson	1,298	381
Kiowa	150	384

FOR STATE TREASURER—Continued

COUNTY	Harry E. Mulinix (Rep.)	Robert H. Higgins (Dem.)
Kit Carson	642	420
Lake	1,002	824
La Plata	295	809
Larimer	1,794	563
Las Animas	2,735	722
Lincoln	743	649
Logan	718	486
Mesa	1,447	646
Mineral	120	42
Moffat	256	232
Montezuma	210	627
Montrose	654	699
Morgan	925	198
Otero	858	375
Ouray	225	402
Park	129	207
Phillips	244	137
Pitkin	91	429
Prowers	664	314
Pueblo	2,616	3,181
Rio Blanco	135	169
Rio Grande	498	131
Routt	561	430
Saguache	234	289
San Juan	94	84
San Miguel	282	323
Sedgwick	279	100
Summit	101	285
Teller	936	1,672
Washington	512	314

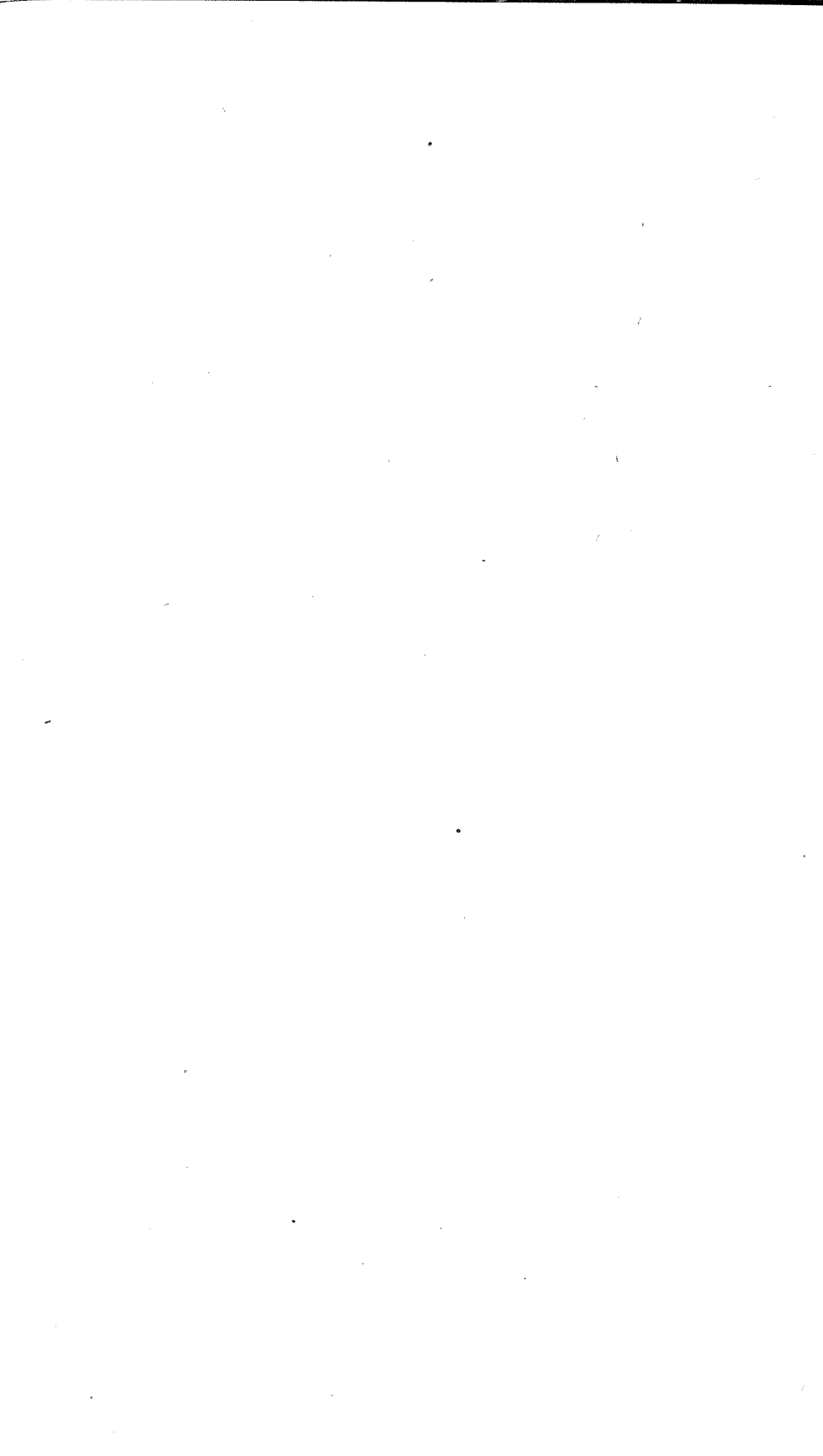
ABSTRACT OF VOTES CAST AT

FOR STATE TREASURER—Continued

COUNTY	Harry E. Mulnix (Rep.)	Robert H. Higgins (Dem.)
Weld	3,281	1,070
Yuma	408	417
	<hr/>	<hr/>
	55,845	36,358

Scattering, 8 Candidates. Total, 32 Votes

Mulnix over Higgins, 19,487



FOR ATTORNEY GENERAL

COUNTY	Samuel G. McMullin (Rep.)	William C. Robinson (Rep.)	Grant E. Halderman (Rep.)	Arthur F. Morrison (Rep.)	Rees D. Rees (Rep.)	Martin Herbert Kennedy (Rep.)	Leslie E. Hubbard (Dem.)
Adams	40	78	32	18	158	29	697
Alamosa	82	34	12	37	37	31	169
Arapahoe	213	170	69	98	438	128	613
Archuleta	82	33	14	48	49	22	266
Baca	145	66	27	42	40	29	348
Bent	71	31	12	24	75	12	236
Boulder	270	512	1,206	182	236	173	1,814
Chaffee	185	145	52	161	51	42	476
Cheyenne	103	221	22	67	44	47	302
Clear Creek	56	38	28	114	70	28	301
Conejos	288	104	36	196	93	99	79
Costilla	96	32	25	11	199	20	421
Crowley	119	216	50	42	75	68	416
Custer	26	15	15	8	22	11	137
Delta	640	359	53	101	123	215	503
Denver	1,934	2,031	2,706	1,903	6,907	2,170	7,159

ABSTRACT OF VOTES CAST AT

Dolores	5	0	0	0	0	0	151
Douglas	19	78	10	17	40	17	112
Eagle	105	93	33	87	47	56	391
Elbert	39	85	7	27	34	6	214
El Paso	677	2,889	139	213	269	452	1,002
Fremont	203	306	55	97	178	107	405
Garfield	281	184	47	88	117	67	1,015
Gilpin	43	90	21	35	51	19	177
Grand	18	26	11	24	36	18	108
Gunnison	140	115	62	32	39	24	301
Hinsdale	19	3	6	1	19	3	89
Huerfano	282	79	583	45	58	37	281
Jackson	24	33	12	3	13	8	28
Jefferson	222	439	153	261	470	155	432
Kiowa	55	66	12	10	14	16	379
Kit Carson	172	217	53	62	107	62	416
Lake	263	302	130	136	119	86	823
La Plata	101	102	24	30	57	28	832
Larimer	392	409	408	155	383	150	530
Las Animas	1,264	479	186	250	408	238	701
Lincoln	189	279	62	92	76	111	630
Logan	215	179	75	241	86	50	490
Mesa	1,216	253	63	72	108	64	597
Mineral	42	16	8	0	64	14	39

FOR ATTORNEY GENERAL—Continued

COUNTY	Samuel C. McMullin (Rep.)	William C. Robinson (Rep.)	Grant E. Holderman (Rep.)	Arthur R. Morrison (Rep.)	Rees D. Rees (Rep.)	Martin Herbert Kennedy (Rep.)	Leslie E. Hubbard (Dem.)
Moffat	93	41	24	22	57	39	222
Montezuma	68	94	13	4	24	13	627
Montrose	300	175	32	51	65	61	687
Morgan	322	221	188	61	136	90	188
Otero	204	273	47	104	246	65	344
Ouray	109	32	14	20	46	25	405
Park	32	29	10	16	29	14	206
Phillips	55	129	15	16	31	19	129
Pitkin	30	20	10	7	18	18	423
Prowers	318	243	42	29	68	42	300
Pueblo	781	713	174	229	945	294	2,931
Rio Blanco	61	61	6	13	18	15	169
Rio Grande	162	147	46	50	92	76	133
Routt	140	144	57	100	107	88	444
Saguache	100	59	15	31	51	26	294
San Juan	22	39	5	43	18	4	91

San Miguel	111	67	26	38	55	24	305
Sedgwick	92	179	18	10	31	21	101
Summit	24	24	11	10	38	7	287
Teller	223	252	165	92	225	87	1,632
Washington	206	131	30	36	69	55	305
Weld	877	812	695	288	782	361	1,057
Yuma	113	193	34	25	79	28	417
	<hr/>	<hr/>	<hr/>	<hr/>	<hr/>	<hr/>	<hr/>
	14,779	14,885	8,196	6,325	14,640	6,384	35,777

Scattering, 6 Candidates. Total, 41 Votes.

Robinson over McMullin, 106

FOR SUPERINTENDENT OF PUBLIC INSTRUCTION

COUNTY	Helen M. Wixson (Rep.)	Grace Ellen Shoe Smith (Rep.)	Mary C. C. Bradford (Dem.)
Adams	210	171	819
Alamosa	187	57	187
Arapahoe	755	346	643
Archuleta	166	76	247
Baca	262	107	375
Bent	176	72	256
Boulder	1,529	874	1,955
Chaffee	434	154	471
Cheyenne	327	118	324
Clear Creek	230	96	370
Conejos	690	226	82
Costilla	315	45	429
Crowley	398	186	438
Custer	69	26	145
Delta	1,178	330	509
Denver	8,940	7,280	7,260
Dolores	5	3	155
Douglas	135	45	118
Eagle	301	117	416
Elbert	128	73	239
El Paso	3,022	960	1,035
Fremont	730	218	423
Garfield	506	272	1,020
Gilpin	204	66	201
Grand	98	26	112
Gunnison	276	127	331
Hinsdale	33	18	97
Huerfano	1,044	101	286
Jackson	70	26	29
Jefferson	816	802	451
Kiowa	122	45	408

FOR SUPERINTENDENT OF PUBLIC INSTRUCTION—Continued

COUNTY	Helen M. Wixson (Rep.)	Grace Ellen Shoe Smith (Rep.)	Mary C. C. Bradford (Dem.)
Kit Carson	494	232	431
Lake	719	341	894
La Plata	317	53	872
Larimer	1,473	463	580
Las Animas	2,235	646	761
Lincoln	539	286	679
Logan	643	233	521
Mesa	1,174	394	678
Mineral	87	57	42
Moffat	210	76	248
Montezuma	126	95	644
Montrose	496	178	750
Morgan	736	291	199
Otero	639	275	371
Ouray	87	168	418
Park	103	44	227
Phillips	194	77	139
Pitkin	74	25	476
Prowers	474	243	316
Pueblo	1,985	965	3,033
Río Blanco	111	53	183
Río Grande	400	208	129
Routt	449	200	452
Saguache	231	48	291
San Juan	60	52	91
San Miguel	258	45	339
Sedgwick	242	92	109
Summit	77	31	286
Teller	728	336	1,773
Washington	375	157	313

FOR SUPERINTENDENT OF PUBLIC INSTRUCTION—Continued

COUNTY	Helen M. Wixson (Rep.)	Grace Ellen Shoe Smith (Rep.)	Mary C. C. Bradford (Dem.)
Weld	2,766	1,105	1,132
Yuma	337	174	474
	<hr/>	<hr/>	<hr/>
	42,193	20,706	37,682

Scattering, 7 Candidates. Total, 30 Votes.

Wixson over Smith, 21,487



FOR JUDGES OF THE SUPREME COURT

COUNTY	William H. Gabbert (Rep.)	Chas. Cavender (Rep.)	George W. Allen (Rep.)	Samuel N. Wheeler (Dem.)	George W. Musser (Dem.)	Morton S. Bailey (Dem.)	Robert G. Strong (Dem.)
Adams	235	110	324	398	278	279	654
Alamosa	146	108	136	112	53	137	59
Arapahoe	631	446	757	284	331	348	174
Archuleta	152	59	179	161	97	108	78
Baca	192	112	228	236	92	114	110
Bent	141	96	108	149	92	101	93
Boulder	1,773	893	1,329	623	972	678	1,522
Chaffee	387	405	272	289	142	421	128
Cheyenne	282	188	283	178	78	88	126
Clear Creek	219	110	184	167	174	141	176
Conejos	570	333	361	60	33	18	31
Costilla	300	128	201	372	216	221	60
Crowley	371	220	310	273	191	186	154
Custer	69	67	39	53	80	163	21
Delta	1,083	620	665	347	192	275	120
Denver	10,895	7,052	13,126	3,568	4,754	4,885	2,731

ABSTRACT OF VOTES CAST AT

Dolores	3	2	4	96	44	71	43
Douglas	113	71	110	42	73	68	32
Eagle	154	405	138	235	162	196	116
Elbert	119	62	116	102	149	125	62
El Paso	2,758	2,096	2,133	410	853	424	319
Fremont	746	695	343	133	210	390	120
Garfield	370	492	348	743	333	504	234
Gilpin	136	115	120	71	92	84	96
Grand	72	60	65	89	64	36	22
Gunnison	302	182	245	247	130	151	100
Hinsdale	43	20	27	74	51	24	21
Huerfano	1,114	910	201	140	186	164	63
Jackson	78	33	46	20	4	6	25
Jefferson	1,080	429	1,077	197	232	236	196
Kiowa	106	57	77	336	103	123	189
Kit Carson	406	255	420	220	175	170	161
Lake	431	1,396	390	592	395	363	337
La Plata	248	109	199	559	396	320	218
Larimer	1,481	467	1,249	176	246	202	444
Las Animas	2,166	1,446	1,103	400	455	412	192
Lincoln	465	309	439	353	264	231	203
Logan	563	281	517	214	230	262	262
Mesa	969	763	601	778	257	187	97
Mineral	92	49	73	28	25	29	11

FOR JUDGES OF THE SUPREME COURT—Continued

COUNTY	William H. Gabbert (Rep.)	Chas. Cavender (Rep.)	George W. Allen (Rep.)	Samuel N. Wheeler (Dem.)	George W. Musser (Dem.)	Morton S. Bailey (Dem.)	Robert G. Strong (Dem.)
Moffat	182	172	115	161	92	120	79
Montezuma	145	67	120	357	271	254	156
Montrose	457	377	298	528	316	274	187
Morgan	645	329	590	72	91	95	109
Otero	650	272	540	260	187	154	94
Ouray	173	100	116	322	253	157	80
Park	74	111	55	94	91	246	68
Phillips	155	71	167	72	70	53	43
Pitkin	73	60	41	283	144	265	146
Prowers	468	242	409	187	139	113	96
Pueblo	2,311	1,224	1,642	1,818	1,446	1,862	1,026
Rio Blanco	105	75	76	143	55	93	44
Rio Grande	344	183	278	73	55	64	32
Routt	386	329	310	256	180	225	186
Saguache	217	90	157	183	134	178	95
San Juan	82	54	56	58	66	31	34

San Miguel	299	169	115	234	154	129	108
Sedgwick	250	139	145	56	51	26	47
Summit	51	127	36	112	93	232	143
Teller	653	404	636	786	899	1,021	693
Washington	313	185	313	175	124	109	102
Weld	2,715	1,319	2,461	433	333	360	985
Yuma	319	160	306	339	148	135	144
	<hr/>	<hr/>	<hr/>	<hr/>	<hr/>	<hr/>	<hr/>
	42,527	27,910	37,525	20,537	18,296	19,137	14,497

Scattering, 11 Candidates. Total, 61 Votes.

Gabbert over Cavender.....	14,617
Allen over Cavender.....	9,615
Wheeler over Musser.....	2,241
Bailey over Musser.....	841

FOR REGENTS OF THE UNIVERSITY OF COLORADO

COUNTY	William J. King (Rep.)	Anna Wolcott Valle (Rep.)	William F. Harlow (Rep.)	Thomas T. Barnard (Dem.)	Clifford W. Mills (Dem.)
Adams	150	239	178	374	625
Alamosa	141	138	68	141	123
Arapahoe	574	686	374	438	441
Archuleta	155	119	78	202	166
Baca	215	164	126	263	240
Bent	134	118	87	189	154
Boulder	1,313	1,102	1,600	1,476	1,468
Chaffee	376	340	191	375	351
Cheyenne	301	252	167	217	211
Clear Creek	167	170	102	292	227
Conejos	567	432	226	73	52
Costilla	285	241	100	418	349
Crowley	334	287	210	331	301
Custer	54	57	26	108	106
Delta	978	833	417	382	377
Denver	8,095	11,911	8,009	5,662	5,961
Dolores	3	2	1	96	93
Douglas	104	109	67	93	77
Eagle	244	229	120	313	286
Elbert	117	94	77	178	134
El Paso	2,494	2,339	1,357	794	715
Fremont	651	597	248	347	324
Garfield	387	433	260	780	688
Gilpin	126	172	77	136	142
Grand	80	71	42	92	78
Gunnison	242	217	121	249	237
Hinsdale	34	34	15	74	74
Huerfano	1,020	302	699	244	198
Jackson	57	56	21	25	17
Jefferson	991	797	730	339	325
Kiowa	100	88	54	324	292

FOR REGENTS OF THE UNIVERSITY OF COLORADO—Continued

COUNTY	William J. Kings (Rep.)	Anna Wolcott Valle (Rep.)	William P. Harlow (Rep.)	Thomas T. Barnard (Dem.)	Clifford W. Mills (Dem.)
Kit Carson.....	425	336	246	333	327
Lake	598	495	373	667	648
La Plata.....	197	247	102	668	568
Larimer	1,055	967	672	434	405
Las Animas.....	2,038	1,434	873	628	526
Lincoln	515	384	297	468	468
Logan	582	421	252	424	364
Mesa	819	774	459	524	416
Mineral	83	86	41	38	37
Moffat	170	157	112	194	164
Montezuma	117	123	83	411	452
Montrose	438	389	171	569	547
Morgan	563	531	289	131	135
Otero	560	509	333	302	269
Ouray	132	147	88	321	283
Park	79	84	32	187	176
Phillips	160	127	77	112	83
Pitkin	67	65	27	354	304
Prowers	438	347	252	246	236
Pueblo	1,914	1,738	1,412	2,667	2,397
Rio Blanco.....	100	86	56	116	113
Rio Grande.....	328	331	139	104	95
Routt	377	354	237	337	343
Saguache	253	121	96	219	207
San Juan	56	73	32	71	69
San Miguel.....	198	197	90	268	246
Sedgwick	209	171	81	73	75
Summit	63	67	32	220	218
Teller	615	610	362	1,662	1,310
Washington	300	256	173	235	192