

STATE OF COLORADO

Abstract of Votes Cast

AT THE

Primary Election

Held on the Twelfth Day of September,
A. D. 1916

AND AT THE

General Election

Held on the Seventh Day of November,
A. D. 1916

FOR

Presidential Electors, Congressmen, and State,
Legislative and District Officers

ALSO THE

Proposed Constitutional Amendments
Initiated and Referred Bills

COMPILED FROM OFFICIAL RETURNS

BY

JAMES R. NOLAND
Secretary of State

1916



DENVER, COLORADO
THE C. F. HOECKEL BLANK BOOK AND LITHOGRAPHING CO.
1916

ABSTRACT OF VOTES CAST AT

**FOR
REPRESENTATIVES IN THE TWENTY-FIRST GENERAL ASSEMBLY,
FROM THE COUNTIES OF PHILLIPS AND YUMA**

COUNTIES	Geo. B. Weir (Dem.)	Chas. E. Damewood (Rep.)
Phillips	138	267
Yuma	401	417
	<hr/>	<hr/>
	539	684

**FOR
REPRESENTATIVES IN THE TWENTY-FIRST GENERAL ASSEMBLY,
FROM THE COUNTY OF PITKIN**

COUNTY	James N. Ashby (Dem.)	Jas. M. Downing (Rep.)
Pitkin	439	99

Scattering, 4 Candidates. Total, 8 Votes.

**FOR
REPRESENTATIVES IN THE TWENTY-FIRST GENERAL ASSEMBLY,
FROM THE COUNTIES OF PROWERS AND BACA**

COUNTIES	N. Gomar Jones (Rep.)	Allyn Cole (Rep.)	A. C. Davis (Dem.)	S. M. Konkel (Dem.)
Prowers	337	476	219	102
Baca	267	178	226	222
	<hr/>	<hr/>	<hr/>	<hr/>
	604	654	445	324
Cole over Jones.....			50	
Davis over Konkel.....			121	

**FOR
REPRESENTATIVES IN THE TWENTY-FIRST GENERAL ASSEMBLY,
FROM THE COUNTY OF PUEBLO**

M. E. Fuller, Democrat.....	2,659
Sterling Cawfield, Democrat.....	2,701
Thos. Mishou, Democrat.....	2,705
Mike Studzinski, Democrat.....	2,594
Geo. E. McDonald, Republican.....	1,683
Chas. Medde, Republican.....	1,977
F. M. Stokes, Republican.....	2,325
J. Arthur Phelps, Republican.....	2,319
Chas. A. Foster, Republican.....	2,100
Stokes over McDonald.....	642
Phelps over McDonald.....	636
Foster over McDonald.....	417
Medde over McDonald.....	294

ABSTRACT OF VOTES CAST AT

**FOR
REPRESENTATIVES IN THE TWENTY-FIRST GENERAL ASSEMBLY,
FROM THE COUNTY OF RIO GRANDE**

COUNTY	William A. Bronaugh (Dem.)	Charles Edman (Rep.)
Rio Grande	135	535

**FOR
REPRESENTATIVES IN THE TWENTY-FIRST GENERAL ASSEMBLY,
FROM THE COUNTIES OF ROUTT AND MOFFAT**

COUNTIES	George W. Smith (Rep.)	M. H. Smith (Dem.)	R. W. Finley (Dem.)	Albert A. Mann (Dem.)
Routt	521	167	112	248
Moffat	259	142	154	28
	780	309	266	276

Smith (M. H.) over Mann, 33

**FOR
REPRESENTATIVES IN THE TWENTY-FIRST GENERAL ASSEMBLY,
FROM THE COUNTIES OF SAGUACHE AND CUSTER**

COUNTIES	Carl L. Marold (Dem.)	Jno. T. McNeely (Rep.)
Saguache	311	224
Custer	135	77
	446	301

Scattering, 1 Candidate. Total, 1 Vote

**FOR
REPRESENTATIVES IN THE TWENTY-FIRST GENERAL ASSEMBLY,
FROM THE COUNTY OF SAN JUAN**

COUNTY	Metz Rodgers (Dem.)	E. J. Holman (Rep.)
San Juan	83	91

**FOR
REPRESENTATIVES IN THE TWENTY-FIRST GENERAL ASSEMBLY,
FROM THE COUNTY OF SAN MIGUEL**

COUNTY	W. H. Doyle (Dem.)	J. W. S. Cross (Rep.)
San Miguel	307	310

ABSTRACT OF VOTES CAST AT

FOR
REPRESENTATIVES IN THE TWENTY-FIRST GENERAL ASSEMBLY,
FROM THE COUNTIES OF SUMMIT, GRAND AND JACKSON

COUNTIES	A. E. Wilkins (Dem.)	Frank W. Murphy (Rep.)
Summit	282	96
Grand	104	118
Jackson	32	86
	418	300

FOR
REPRESENTATIVES IN THE TWENTY-FIRST GENERAL ASSEMBLY,
FROM THE COUNTIES OF TELLER AND PARK

	Teller	Park	Total
Pearl Emens, Republican.....	410	75	485
David W. Kingston, Republican.....	441	65	506
Henry P. Nagel, Jr., Republican.....	617	39	656
W. L. Shockey, Republican.....	692	25	717
J. M. Harris, Democrat.....	1,000	143	1,143
Abe Hawn, Democrat.....	721	18	739
John Ifinger, Democrat.....	770	192	962
Joseph Crumby, Democrat.....	791	24	815
B. F. Campbell, Democrat.....	605	87	692
Shockey over Kingston.....		211	
Nagel over Kingston.....		150	
Harris over Crumby.....		328	
Ifinger over Crumby.....		147	

**FOR
REPRESENTATIVES IN THE TWENTY-FIRST GENERAL ASSEMBLY,
FROM THE COUNTY OF WELD**

COUNTY	Wm. K. Gilcrest (Rep.)	C. R. Graves (Rep.)	Chas. H. DeFord (Rep.)	Evert H. Houtchens (Dem.)	A. F. Hart (Dem.)
Weld	2,781	2,323	1,343	942	811
Gilcrest over DeFord.....				1,438	
Graves over DeFord.....				980	

ABSTRACT OF VOTES CAST AT

FOR GOVERNOR

COUNTY	Samuel D. Nicholson (Rep.)	George A. Carlson (Rep.)	Julius C. Gunter (Dem.)
Adams	244	230	835
Alamosa	207	127	193
Arapahoe	805	575	566
Archuleta	192	113	248
Baca	103	312	393
Bent	58	257	271
Boulder	984	2,048	2,126
Chaffee	370	503	513
Cheyenne	347	261	323
Clear Creek	319	165	356
Conejos	645	696	88
Costilla	318	124	420
Crowley	158	572	471
Custer	57	70	153
Delta	669	1,202	539
Denver	11,716	9,121	8,149
Dolores	11	3	141
Douglas	132	81	123
Eagle	303	201	426
Elbert	133	98	234
El Paso	2,387	3,020	1,067
Fremont	413	919	460
Garfield	491	456	1,063
Gilpin	189	165	199
Grand	89	71	114
Gunnison	270	263	356
Hinsdale	44	19	98
Huerfano	1,209	178	311
Jackson	56	59	31
Jefferson	1,089	1,104	470
Kiowa	59	122	386

FOR GOVERNOR—Continued

COUNTY	Samuel D. Nicholson (Rep.)	George A. Carlson (Rep.)	Julius C. Gunter (Dem.)
Kit Carson	311	497	438
Lake	1,286	335	935
La Plata	248	211	853
Larimer	836	1,662	618
Las Animas	2,301	1,188	795
Lincoln	402	557	686
Logan	469	619	550
Mesa	557	1,360	723
Mineral	129	87	51
Moffat	158	192	237
Montezuma	52	209	655
Montrose	141	664	747
Morgan	638	761	209
Otero	296	908	387
Ouray	128	164	436
Park	115	48	221
Phillips	69	289	142
Pitkin	69	46	461
Prowers	244	676	330
Pueblo	1,282	2,521	3,208
Rio Blanco	104	98	187
Rio Grande	371	474	131
Routt	495	290	483
Saguache	144	214	311
San Juan	78	73	95
San Miguel	304	100	346
Sedgwick	140	289	104
Summit	108	30	303
Teller	1746	503	1,844
Washington	377	306	332

ABSTRACT OF VOTES CAST AT

FOR GOVERNOR—Continued

COUNTY	Samuel D. Nicholson (Rep.)	George A. Carlson (Rep.)	Julius C. Gunter (Dem.)
Weld	2,014	3,103	1,186
Yuma	199	394	442
	<hr/>	<hr/>	<hr/>
	38,878	42,003	39,569

Scattering, 11 Candidates. Total, 35 votes

Carlson Over Nicholson, 3,125



ABSTRACT OF VOTES CAST AT
FOR LIEUTENANT GOVERNOR

COUNTY	Moses E. Lewis (Rep.)	James A. Pulliam (Dem.)	Franklin E. Carringer (Dem.)
Adams	376	406	514
Alamosa	223	132	58
Arapahoe	994	286	379
Archuleta	209	227	43
Baca	354	237	118
Bent	220	158	104
Boulder	2,336	1,102	966
Chaffee	543	250	274
Cheyenne	473	179	126
Clear Creek	276	166	237
Conejos	624	69	17
Costilla	355	362	102
Crowley	572	241	218
Custer	87	74	82
Delta	1,352	316	211
Denver	14,718	3,380	4,571
Dolores	5	141	51
Douglas	168	69	48
Eagle	380	242	167
Elbert	183	125	121
El Paso	3,851	577	473
Fremont	1,006	204	243
Garfield	712	560	477
Gilpin	219	95	118
Grand	114	74	38
Gunnison	368	208	150
Hinsdale	45	83	16
Huerfano	1,193	168	128
Jackson	79	20	9
Jefferson	1,536	169	358
Kiowa	147	320	86

FOR LIEUTENANT GOVERNOR—Continued

COUNTY	Moses E. Lewis (Rep.)	James A. Pulliam (Dem.)	Franklin E. Carringer (Dem.)
Kit Carson	654	265	162
Lake	924	326	601
La Plata	323	992	84
Larimer	1,784	279	304
Las Animas	2,645	397	356
Lincoln	796	400	269
Logan	853	379	175
Mesa	1,410	387	318
Mineral	128	28	21
Moffat	269	139	109
Montezuma	214	604	159
Montrose	656	387	337
Morgan	961	95	119
Otero	888	215	171
Ouray	215	247	219
Park	122	142	94
Phillips	253	80	57
Pitkin	90	274	204
Prowers	684	165	142
Pueblo	2,722	1,632	1,585
Rio Blanco	138	95	84
Rio Grande	512	90	41
Routt	597	262	211
Saguache	238	181	133
San Juan	94	89	24
San Miguel	298	228	156
Sedgwick	290	57	43
Summit	98	186	137
Teller	1,010	1,151	742
Washington	514	203	121

ABSTRACT OF VOTES CAST AT
FOR LIEUTENANT GOVERNOR—Continued

COUNTY	Moses E. Lewis (Rep.)	James A. Pulliam (Dem.)	Franklin E. Carringer (Dem.)
Weld	3,516	571	577
Yuma	421	272	176
	58,040	21,458	18,434

Scattering, 6 Candidates. Total, 37 Votes.

Pulliam over Carringer, 3,024.



ABSTRACT OF VOTES CAST AT

FOR SECRETARY OF STATE

COUNTY	John E. Ramer (Rep.)	William F. Allen (Dem.)
Adams	361	713
Alamosa	223	176
Arapahoe	1,009	600
Archuleta	217	236
Baca	352	384
Bent	225	237
Boulder	2,356	1,885
Chaffee	544	465
Cheyenne	482	308
Clear Creek	274	327
Conejos	650	89
Costilla	363	426
Crowley	547	441
Custer	90	141
Delta	1,564	512
Denver	14,515	7,190
Dolores	6	136
Douglas	166	115
Eagle	379	399
Elbert	178	219
El Paso	3,733	1,007
Fremont	905	422
Garfield	704	998
Gilpin	213	177
Grand	114	110
Gunnison	378	345
Hinsdale	44	85
Huerfano	1,180	277
Jackson	97	29
Jefferson	1,515	384
Kiowa	152	371

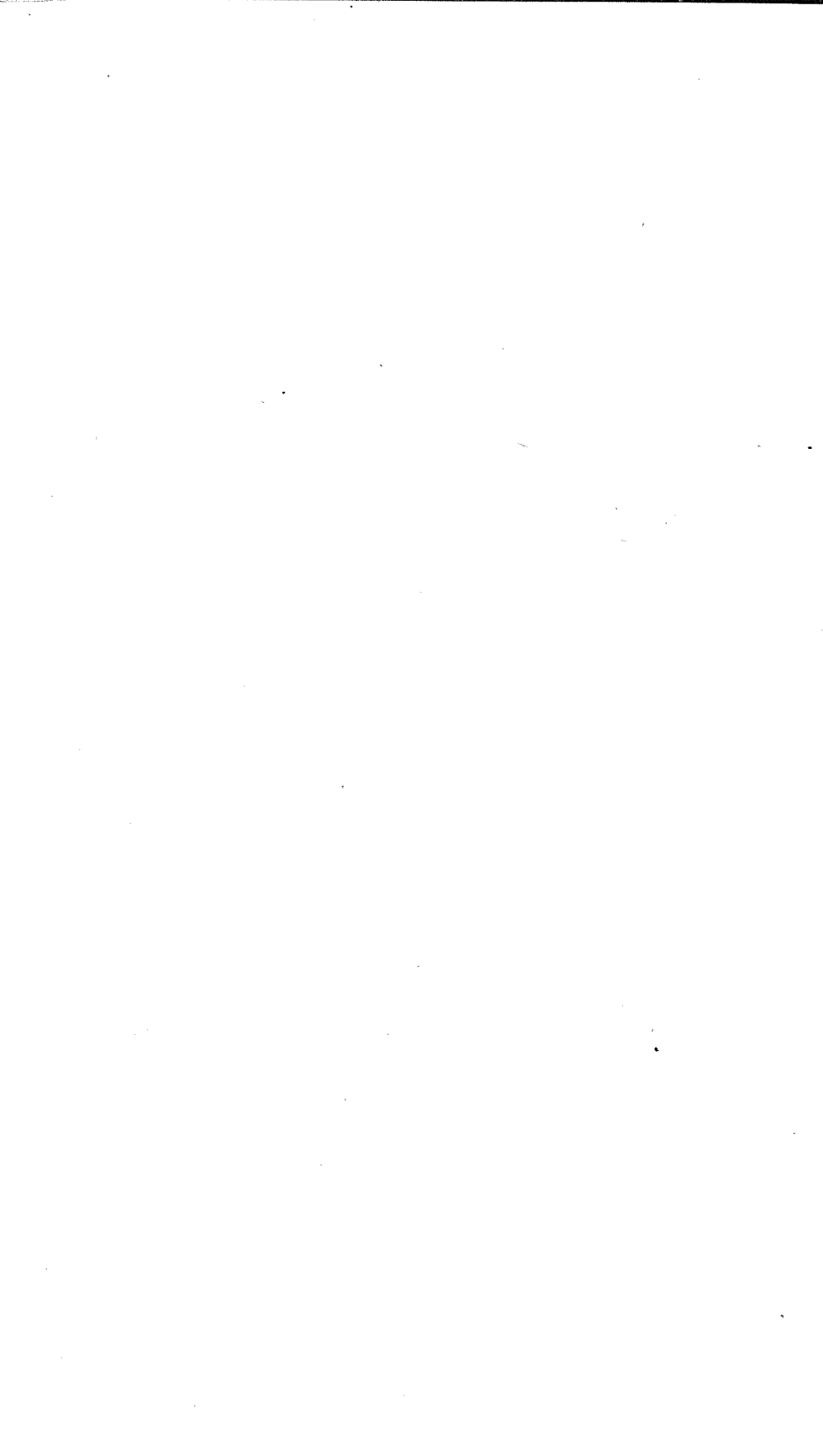
FOR SECRETARY OF STATE—Continued

COUNTY	John E. Ramer (Rep.)	William F. Allen (Dem.)
Kit Carson	657	419
Lake	928	840
La Plata	327	826
Larimer	2,082	560
Las Animas	2,603	738
Lincoln	787	644
Logan	848	529
Mesa	1,384	655
Mineral	128	44
Moffat	277	227
Montezuma	205	612
Montrose	646	700
Morgan	959	201
Otero	870	369
Ouray	226	397
Park	123	211
Phillips	256	134
Pitkin	94	430
Prowers	677	317
Pueblo	2,730	2,908
Rio Blanco	139	169
Rio Grande	518	129
Routt	606	454
Saguache	242	292
San Juan	91	86
San Miguel	292	328
Sedgwick	303	103
Summit	100	283
Teller	998	1,737
Washington	529	308

ABSTRACT OF VOTES CAST AT
FOR SECRETARY OF STATE—Continued

COUNTY	John E. Ramer (Rep.)	William F. Allen (Dem.)
Weld	3,517	1,122
Yuma	425	421
	<hr/>	<hr/>
	58,103	36,397

Scattering, 6 Candidates. Total, 34 Votes.



ABSTRACT OF VOTES CAST AT

FOR AUDITOR OF STATE

COUNTY	Olie Thorson (Rep.)	H. H. Harbaugh (Rep.)	Arthur M. Stong (Rep.)	Charles H. Leckenby (Dem.)	Lloyd M. Davis (Dem.)
Adams	100	128	137	484	434
Alamosa	56	36	189	122	71
Arapahoe	391	285	339	400	251
Archuleta	80	44	118	172	64
Baca	143	75	129	161	196
Bent	104	71	53	169	100
Boulder	1,297	536	589	467	1,973
Chaffee	190	189	168	314	213
Cheyenne	228	86	153	182	132
Clear Creek	122	64	113	260	132
Conejos	360	88	364	65	26
Costilla	141	29	191	371	91
Crowley	222	122	200	213	251
Custer	34	20	37	114	47
Delta	563	286	498	305	235
Denver	6,214	4,557	4,313	4,954	2,726
Dolores	2	1	2	79	68
Douglas	81	29	58	83	35
Eagle	318	44	74	266	161
Elbert	79	46	63	113	130
El Paso	1,702	1,128	1,097	502	161
Fremont	279	344	259	306	141
Garfield	651	116	111	726	346
Gilpin	96	54	84	101	109
Grand	39	35	48	87	25
Gunnison	231	71	123	221	142
Hinsdale	25	21	5	61	34
Huerfano	964	107	76	188	112
Jackson	43	20	27	25	6
Jefferson	449	727	357	347	141
Kiowa	65	29	52	246	153

FOR AUDITOR OF STATE—Continued

COUNTY	Olle Thorson (Rep.)	H. H. Harbough (Rep.)	Arthur M. Strong (Rep.)	Charles H. Leckenby (Dem.)	Roy M. Davis (Dem.)
Kit Carson	314	129	222	220	212
Lake	734	114	228	551	376
La Plata	99	94	137	626	287
Larimer	718	521	545	310	277
Las Animas	1,631	462	670	433	332
Lincoln	348	161	270	388	288
Logan	347	189	279	332	231
Mesa	766	318	416	461	218
Mineral	65	26	48	34	15
Moffat	156	51	71	204	75
Montezuma	53	83	76	495	208
Montrose	202	277	154	429	316
Morgan	527	215	229	106	103
Otero	384	172	298	236	154
Ouray	73	81	79	257	190
Park	66	24	37	124	116
Phillips	103	51	87	79	57
Pitkin	58	18	22	363	144
Prowers	255	167	233	165	158
Pueblo	861	1,365	806	1,864	1,386
Rio Blanco	87	29	40	165	46
Rio Grande	213	127	195	95	41
Routt	250	142	206	477	72
Saguache	127	66	98	177	142
San Juan	23	50	31	79	26
San Miguel	105	76	111	189	174
Sedgwick	135	81	95	64	40
Summit	50	20	44	244	75
Teller	326	262	430	846	987
Washington	218	98	192	168	149

ABSTRACT OF VOTES CAST AT

FOR AUDITOR OF STATE—Continued

COUNTY	Olie Thorson (Rep.)	H. H. Harbough (Rep.)	Arthur M. Strong (Rep.)	Charles H. Leckenby (Dem.)	Roy M. Davis (Dem.)
Weld	668	2,735	786	565	543
Yuma	187	126	127	269	187
	<hr/>	<hr/>	<hr/>	<hr/>	<hr/>
	25,418	17,718	17,288	23,119	16,731

Scattering, 7 Candidates. Total, 32 Votes.

Thorson over Harbaugh, 7,700

Leckenby over Davis, 6,388



ABSTRACT OF VOTES CAST AT

FOR STATE TREASURER

COUNTY	Harry E. Mulnix (Rep.)	Robert H. Higgins (Dem.)
Adams	290	678
Alamosa	197	167
Arapahoe	977	618
Archuleta	209	236
Baca	344	361
Bent	208	233
Boulder	2,199	1,865
Chaffee	541	470
Cheyenne	455	307
Clear Creek	281	335
Conejos	580	84
Costilla	345	420
Crowley	551	450
Custer	89	145
Delta	1,398	507
Denver	14,181	7,168
Dolores	14	137
Douglas	169	114
Eagle	390	389
Elbert	168	219
El Paso	3,625	1,002
Fremont	900	420
Garfield	721	997
Gilpin	212	181
Grand	112	105
Gunnison	361	344
Hinsdale	46	84
Huerfano	1,056	285
Jackson	89	26
Jefferson	1,298	381
Kiowa	150	384

FOR STATE TREASURER—Continued

COUNTY	Harry E. Munnix (Rep.)	Robert H. Higgins (Dem.)
Kit Carson	642	420
Lake	1,002	824
La Plata	295	809
Larimer	1,794	563
Las Animas	2,735	722
Lincoln	743	649
Logan	718	486
Mesa	1,447	646
Mineral	120	42
Moffat	256	232
Montezuma	210	627
Montrose	654	699
Morgan	925	198
Otero	858	375
Ouray	225	402
Park	129	207
Phillips	244	137
Pitkin	91	429
Prowers	664	314
Pueblo	2,616	3,181
Rio Blanco	135	169
Rio Grande	498	131
Routt	561	430
Saguache	234	289
San Juan	94	84
San Miguel	282	323
Sedgwick	279	100
Summit	101	285
Teller	936	1,672
Washington	512	314

ABSTRACT OF VOTES CAST AT

FOR STATE TREASURER—Continued

COUNTY	Harry E. Mulnix (Rep.)	Robert H. Higgins (Dem.)
Weld	3,281	1,070
Yuma	408	417
	<hr/>	<hr/>
	55,845	36,358

Scattering, 8 Candidates. Total, 32 Votes

Mulnix over Higgins, 19,487

