

STATE OF COLORADO

# Abstract of Votes Cast

AT THE

## Primary Election

Held on the Twelfth Day of September,  
A. D. 1916

AND AT THE

## General Election

Held on the Seventh Day of November,  
A. D. 1916

FOR

Presidential Electors, Congressmen, and State,  
Legislative and District Officers

ALSO THE

Proposed Constitutional Amendments  
Initiated and Referred Bills

COMPILED FROM OFFICIAL RETURNS

BY

JAMES R. NOLAND  
Secretary of State

1916



DENVER, COLORADO  
THE C. F. HOECKEL BLANK BOOK AND LITHOGRAPHING CO.  
1916

ABSTRACT OF VOTES CAST AT

**FOR  
REPRESENTATIVES IN THE TWENTY-FIRST GENERAL ASSEMBLY,  
FROM THE COUNTY OF JEFFERSON**

COUNTY	John Grattan (Rep.)	Chas. E. Friend (Dem.)
Jefferson .....	1,401	434

**FOR  
REPRESENTATIVES IN THE TWENTY-FIRST GENERAL ASSEMBLY,  
FROM THE COUNTIES OF KIOWA AND BENT**

COUNTIES	Boon Best (Dem.)	Wilkie C. Ham (Dem.)	A. T. Cherry (Rep.)
Kiowa .....	449	140	141
Bent .....	132	302	294
	<hr/>	<hr/>	<hr/>
	581	442	345

Scattering, 1 Candidate. Total, 1 Vote.

Best over Ham, 139

**FOR  
REPRESENTATIVES IN THE TWENTY-FIRST GENERAL ASSEMBLY,  
FROM THE COUNTY OF LAKE**

COUNTY	Ernest W. Owen (Dem.)	Duane Dorsey (Dem.)	D. E. Francis (Dem.)	John C. Carrig (Rep.)	Fred L. Cretney (Rep.)
Lake .....	647	298	292	533	697
Owen over Francis.....				355	
Dorsey over Francis.....				6	
Cretney over Carrig.....				164	

**FOR  
REPRESENTATIVES IN THE TWENTY-FIRST GENERAL ASSEMBLY,  
FROM THE COUNTY OF LA PLATA**

COUNTY	John H. McDevitt, Jr. (Rep.)	Thomas H. Kelley (Dem.)	D. L. Egger (Dem.)
La Plata .....	365	211	89
Scattering, 1 Candidate. Total, 1 Vote.			
Kelley over Egger, 122.			

**FOR  
REPRESENTATIVES IN THE TWENTY-FIRST GENERAL ASSEMBLY,  
FROM THE COUNTY OF LARIMER**

COUNTY	P. D. Nelson (Rep.)	Wm. E. Banks (Dem.)
Larimer .....	1,539	500
Scattering, 2 Candidates. Total, 14 Votes.		

## ABSTRACT OF VOTES CAST AT

**FOR**  
**REPRESENTATIVES IN THE TWENTY-FIRST GENERAL ASSEMBLY,**  
**FROM THE COUNTY OF LAS ANIMAS**

COUNTY	Faustin T. Mascareñas (Rep.)	H. A. Schmidt (Rep.)	F. T. Frisbey (Dem.)	Andres Lucero (Dem.)
Las Animas .....	1,936	2,141	642	596

**FOR**  
**REPRESENTATIVES IN THE TWENTY-FIRST GENERAL ASSEMBLY,**  
**FROM THE COUNTIES OF LINCOLN, KIT CARSON AND CHEYENNE**

COUNTIES	C. M. Somerville (Dem.)	W. H. Chamberlain (Dem.)	Wm. J. Rothwell (Rep.)	Jennie L. Tressel (Rep.)
Lincoln .....	208	38	728	...
Kit Carson .....	66	17	580	5
Cheyenne .....	68	21	438	...
	342	76	1,746	5

Scattering, 7 Candidates. Total, 12 Votes.

Somerville over Chamberlain.....	266
Rothwell over Tressel.....	1,741

**FOR  
REPRESENTATIVES IN THE TWENTY-FIRST GENERAL ASSEMBLY,  
FROM THE COUNTIES OF LOGAN AND SEDGWICK**

COUNTIES	L. G. Giacomini (Dem.)	John C. Scott (Rep.)
Logan .....	430	682
Sedgwick .....	89	275
	<hr/>	<hr/>
	519	957

Scattering, 2 Candidates. Total, 3 Votes.

**FOR  
REPRESENTATIVES IN THE TWENTY-FIRST GENERAL ASSEMBLY,  
FROM THE COUNTY OF MESA**

COUNTY	Albert R. Sampliner (Rep.)	Benton Canon (Dem.)
Mesa .....	1,398	723

## ABSTRACT OF VOTES CAST AT

**FOR**  
**REPRESENTATIVES IN THE TWENTY-FIRST GENERAL ASSEMBLY,**  
**FROM THE COUNTIES OF MONTEZUMA AND DOLORES**

COUNTIES	S. C. Green (Rep.)	U. L. Albers (Dem.)	Clifford J. Laube (Dem.)
Montezuma .....	205	207	524
Dolores .....	3	65	152
	208	272	676

Scattering, 2 Candidates. Total, 2 Votes.

**FOR**  
**REPRESENTATIVES IN THE TWENTY-FIRST GENERAL ASSEMBLY,**  
**FROM THE COUNTY OF MONTROSE**

COUNTY	W. J. Horton (Dem.)	S. B. Wonder (Rep.)	Chas. Doland (Rep.)
Montrose .....	686	361	343

Wonder over Doland, 18

**FOR  
REPRESENTATIVES IN THE TWENTY-FIRST GENERAL ASSEMBLY,  
FROM THE COUNTIES OF MORGAN AND WASHINGTON**

COUNTIES	Samuel C. Farrar (Dem.)	Mark B. Gill (Rep.)
Morgan .....	171	937
Washington .....	330	510
	501	1,447

Scattering, 5 Candidates. Total, 8 Votes.

**FOR  
REPRESENTATIVES IN THE TWENTY-FIRST GENERAL ASSEMBLY,  
FROM THE COUNTY OF OURAY**

COUNTY	B. H. DuPraw (Dem.)	Owen McCaffery (Dem.)	Dan A. Ferguson (Rep.)	John Justin McCarthy (Rep.)
Ouray .....	396	191	150	133
DuPraw over McCaffery .....			205	
Ferguson over McCarthy .....			17	

ABSTRACT OF VOTES CAST AT

**FOR  
REPRESENTATIVES IN THE TWENTY-FIRST GENERAL ASSEMBLY,  
FROM THE COUNTIES OF PHILLIPS AND YUMA**

COUNTIES	Geo. B. Weir (Dem.)	Chas. E. Damewood (Rep.)
Phillips .....	138	267
Yuma .....	401	417
	539	684

**FOR  
REPRESENTATIVES IN THE TWENTY-FIRST GENERAL ASSEMBLY,  
FROM THE COUNTY OF PITKIN**

COUNTY	James N. Ashby (Dem.)	Jas. M. Downing (Rep.)
Pitkin .....	439	99

Scattering, 4 Candidates. Total, 8 Votes.



**FOR  
REPRESENTATIVES IN THE TWENTY-FIRST GENERAL ASSEMBLY,  
FROM THE COUNTIES OF PROWERS AND BACA**

COUNTIES	N. Gomar Jones (Rep.)	Allyn Cole (Rep.)	A. C. Davis (Dem.)	S. M. Konkel (Dem.)
Prowers .....	337	476	219	102
Baca .....	267	178	226	222
	<hr/>	<hr/>	<hr/>	<hr/>
	604	654	445	324
Cole over Jones.....			50	
Davis over Konkel.....			121	

**FOR  
REPRESENTATIVES IN THE TWENTY-FIRST GENERAL ASSEMBLY,  
FROM THE COUNTY OF PUEBLO**

M. E. Fuller, Democrat.....	2,659
Sterling Cawfield, Democrat.....	2,701
Thos. Mishou, Democrat.....	2,705
Mike Studzinski, Democrat.....	2,594
Geo. E. McDonald, Republican.....	1,683
Chas. Medde, Republican.....	1,977
F. M. Stokes, Republican.....	2,325
J. Arthur Phelps, Republican.....	2,319
Chas. A. Foster, Republican.....	2,100
Stokes over McDonald.....	642
Phelps over McDonald.....	636
Foster over McDonald.....	417
Medde over McDonald.....	294

## ABSTRACT OF VOTES CAST AT

**FOR  
REPRESENTATIVES IN THE TWENTY-FIRST GENERAL ASSEMBLY,  
FROM THE COUNTY OF RIO GRANDE**

COUNTY	William A. Bronaugh (Dem.)	Charles Edman (Rep.)
Rio Grande .....	135	535

**FOR  
REPRESENTATIVES IN THE TWENTY-FIRST GENERAL ASSEMBLY,  
FROM THE COUNTIES OF ROUTT AND MOFFAT**

COUNTIES	George W. Smith (Rep.)	M. H. Smith (Dem.)	R. W. Finley (Dem.)	Albert A. Mann (Dem.)
Routt .....	521	167	112	248
Moffat .....	259	142	154	28
	780	309	266	276

Smith (M. H.) over Mann, 33

**FOR  
REPRESENTATIVES IN THE TWENTY-FIRST GENERAL ASSEMBLY,  
FROM THE COUNTIES OF SAGUACHE AND CUSTER**

COUNTIES	Carl L. Marold (Dem.)	Jno. T. McNeely (Rep.)
Saguache .....	311	224
Custer .....	135	77
	446	301

Scattering, 1 Candidate. Total, 1 Vote

**FOR  
REPRESENTATIVES IN THE TWENTY-FIRST GENERAL ASSEMBLY,  
FROM THE COUNTY OF SAN JUAN**

COUNTY	Metz Rodgers (Dem.)	E. J. Holman (Rep.)
San Juan .....	83	91

**FOR  
REPRESENTATIVES IN THE TWENTY-FIRST GENERAL ASSEMBLY,  
FROM THE COUNTY OF SAN MIGUEL**

COUNTY	W. H. Doyle (Dem.)	J. W. S. Cross (Rep.)
San Miguel .....	307	310

## ABSTRACT OF VOTES CAST AT

**FOR**  
**REPRESENTATIVES IN THE TWENTY-FIRST GENERAL ASSEMBLY,**  
**FROM THE COUNTIES OF SUMMIT, GRAND AND JACKSON**

COUNTIES	A. E. Wilkins (Dem.)	Frank W. Murphy (Rep.)
Summit .....	282	96
Grand .....	104	118
Jackson .....	32	86
	418	300

**FOR**  
**REPRESENTATIVES IN THE TWENTY-FIRST GENERAL ASSEMBLY,**  
**FROM THE COUNTIES OF TELLER AND PARK**

	Teller	Park	Total
Pearl Emens, Republican.....	410	75	485
David W. Kingston, Republican.....	441	65	506
Henry P. Nagel, Jr., Republican.....	617	39	656
W. L. Shockey, Republican.....	692	25	717
J. M. Harris, Democrat.....	1,000	143	1,143
Abe Hawn, Democrat.....	721	18	739
John Ifinger, Democrat.....	770	192	962
Joseph Crumby, Democrat.....	791	24	815
B. F. Campbell, Democrat.....	605	87	692
Shockey over Kingston.....		211	
Nagel over Kingston.....		150	
Harris over Crumby.....		328	
Ifinger over Crumby.....		147	

**FOR  
REPRESENTATIVES IN THE TWENTY-FIRST GENERAL ASSEMBLY,  
FROM THE COUNTY OF WELD**

COUNTY	Wm. K. Gilcrest (Rep.)	C. R. Graves (Rep.)	Chas. H. DeFord (Rep.)	Evert H. Houtchens (Dem.)	A. F. Hart (Dem.)
Weld .....	2,781	2,323	1,343	942	811
Gilcrest over DeFord.....				1,438	
Graves over DeFord.....				980	

## ABSTRACT OF VOTES CAST AT

## FOR GOVERNOR

COUNTY	Samuel D. Nicholson (Rep.)	George A. Carlson (Rep.)	Julius C. Gunter (Dem.)
Adams .....	244	230	835
Alamosa .....	207	127	193
Arapahoe .....	805	575	566
Archuleta .....	192	113	248
Baca .....	103	312	393
Bent .....	58	257	271
Boulder .....	984	2,048	2,126
Chaffee .....	370	503	513
Cheyenne .....	347	261	323
Clear Creek .....	319	165	356
Conejos .....	645	696	88
Costilla .....	318	124	420
Crowley .....	158	572	471
Custer .....	57	70	153
Delta .....	669	1,202	539
Denver .....	11,716	9,121	8,149
Dolores .....	11	3	141
Douglas .....	132	81	123
Eagle .....	303	201	426
Elbert .....	133	98	234
El Paso .....	2,387	3,020	1,067
Fremont .....	413	919	460
Garfield .....	491	456	1,063
Gilpin .....	189	165	199
Grand .....	89	71	114
Gunnison .....	270	263	356
Hinsdale .....	44	19	98
Huerfano .....	1,209	178	311
Jackson .....	56	59	31
Jefferson .....	1,089	1,104	470
Kiowa .....	59	122	386

## FOR GOVERNOR—Continued

COUNTY	Samuel D. Nicholson (Rep.)	George A. Carlson (Rep.)	Julius C. Gunter (Dem.)
Kit Carson .....	311	497	438
Lake .....	1,286	335	935
La Plata .....	248	211	853
Larimer .....	836	1,662	618
Las Animas .....	2,301	1,188	795
Lincoln .....	402	557	686
Logan .....	469	619	550
Mesa .....	557	1,360	723
Mineral .....	129	87	51
Moffat .....	158	192	237
Montezuma .....	52	209	655
Montrose .....	141	664	747
Morgan .....	638	761	209
Otero .....	296	908	387
Ouray .....	128	164	436
Park .....	115	48	221
Phillips .....	69	289	142
Pitkin .....	69	46	461
Prowers .....	244	676	330
Pueblo .....	1,282	2,521	3,208
Rio Blanco .....	104	98	187
Rio Grande .....	371	474	131
Routt .....	495	290	483
Saguache .....	144	214	311
San Juan .....	78	73	95
San Miguel .....	304	100	346
Sedgwick .....	140	289	104
Summit .....	108	30	303
Teller .....	1746	503	1,844
Washington .....	377	306	332

## ABSTRACT OF VOTES CAST AT

## FOR GOVERNOR—Continued

COUNTY	Samuel D. Nicholson (Rep.)	George A. Carlson (Rep.)	Julius C. Gunter (Dem.)
Weld .....	2,014	3,103	1,186
Yuma .....	199	394	442
	<hr/>	<hr/>	<hr/>
	38,878	42,003	39,569

Scattering, 11 Candidates. Total, 35 votes

Carlson Over Nicholson, 3,125





ABSTRACT OF VOTES CAST AT  
FOR LIEUTENANT GOVERNOR

COUNTY	Moses E. Lewis (Rep.)	James A. Pulliam (Dem.)	Franklin E. Carringer (Dem.)
Adams .....	376	406	514
Alamosa .....	223	132	58
Arapahoe .....	994	286	379
Archuleta .....	209	227	43
Baca .....	354	237	118
Bent .....	220	158	104
Boulder .....	2,336	1,102	966
Chaffee .....	543	250	274
Cheyenne .....	473	179	126
Clear Creek .....	276	166	237
Conejos .....	624	69	17
Costilla .....	355	362	102
Crowley .....	572	241	218
Custer .....	87	74	82
Delta .....	1,352	316	211
Denver .....	14,718	3,380	4,571
Dolores .....	5	141	51
Douglas .....	168	69	48
Eagle .....	380	242	167
Elbert .....	183	125	121
El Paso .....	3,851	577	473
Fremont .....	1,006	204	243
Garfield .....	712	560	477
Gilpin .....	219	95	118
Grand .....	114	74	38
Gunnison .....	368	208	150
Hinsdale .....	45	83	16
Huerfano .....	1,193	168	128
Jackson .....	79	20	9
Jefferson .....	1,536	169	358
Kiowa .....	147	320	86

## FOR LIEUTENANT GOVERNOR—Continued

COUNTY	Moses E. Lewis (Rep.)	James A. Pulliam (Dem.)	Franklin E. Carringer (Dem.)
Kit Carson .....	654	265	162
Lake .....	924	326	601
La Plata .....	323	992	84
Larimer .....	1,784	279	304
Las Animas .....	2,645	397	356
Lincoln .....	796	400	269
Logan .....	853	379	175
Mesa .....	1,410	387	318
Mineral .....	128	28	21
Moffat .....	269	139	109
Montezuma .....	214	604	159
Montrose .....	656	387	337
Morgan .....	961	95	119
Otero .....	888	215	171
Ouray .....	215	247	219
Park .....	122	142	94
Phillips .....	253	80	57
Pitkin .....	90	274	204
Prowers .....	684	165	142
Pueblo .....	2,722	1,632	1,585
Rio Blanco .....	138	95	84
Rio Grande .....	512	90	41
Routt .....	597	262	211
Saguache .....	238	181	133
San Juan .....	94	89	24
San Miguel .....	298	228	156
Sedgwick .....	290	57	43
Summit .....	98	186	137
Teller .....	1,010	1,151	742
Washington .....	514	203	121

ABSTRACT OF VOTES CAST AT  
FOR LIEUTENANT GOVERNOR—Continued

COUNTY	Moses E. Lewis (Rep.)	James A. Pulliam (Dem.)	Franklin E. Carringer (Dem.)
Weld .....	3,516	571	577
Yuma .....	421	272	176
	58,040	21,458	18,434

Scattering, 6 Candidates. Total, 37 Votes.

Pulliam over Carringer, 3,024.



## ABSTRACT OF VOTES CAST AT

## FOR SECRETARY OF STATE

COUNTY	John E. Ramer (Rep.)	William F. Allen (Dem.)
Adams .....	361	713
Alamosa .....	223	176
Arapahoe .....	1,009	600
Archuleta .....	217	236
Baca .....	352	384
Bent .....	225	237
Boulder .....	2,356	1,885
Chaffee .....	544	465
Cheyenne .....	482	308
Clear Creek .....	274	327
Conejos .....	650	89
Costilla .....	363	426
Crowley .....	547	441
Custer .....	90	141
Delta .....	1,564	512
Denver .....	14,515	7,190
Dolores .....	6	136
Douglas .....	166	115
Eagle .....	379	399
Elbert .....	178	219
El Paso .....	3,733	1,007
Fremont .....	905	422
Garfield .....	704	998
Gilpin .....	213	177
Grand .....	114	110
Gunnison .....	378	345
Hinsdale .....	44	85
Huerfano .....	1,180	277
Jackson .....	97	29
Jefferson .....	1,515	384
Kiowa .....	152	371

## FOR SECRETARY OF STATE—Continued

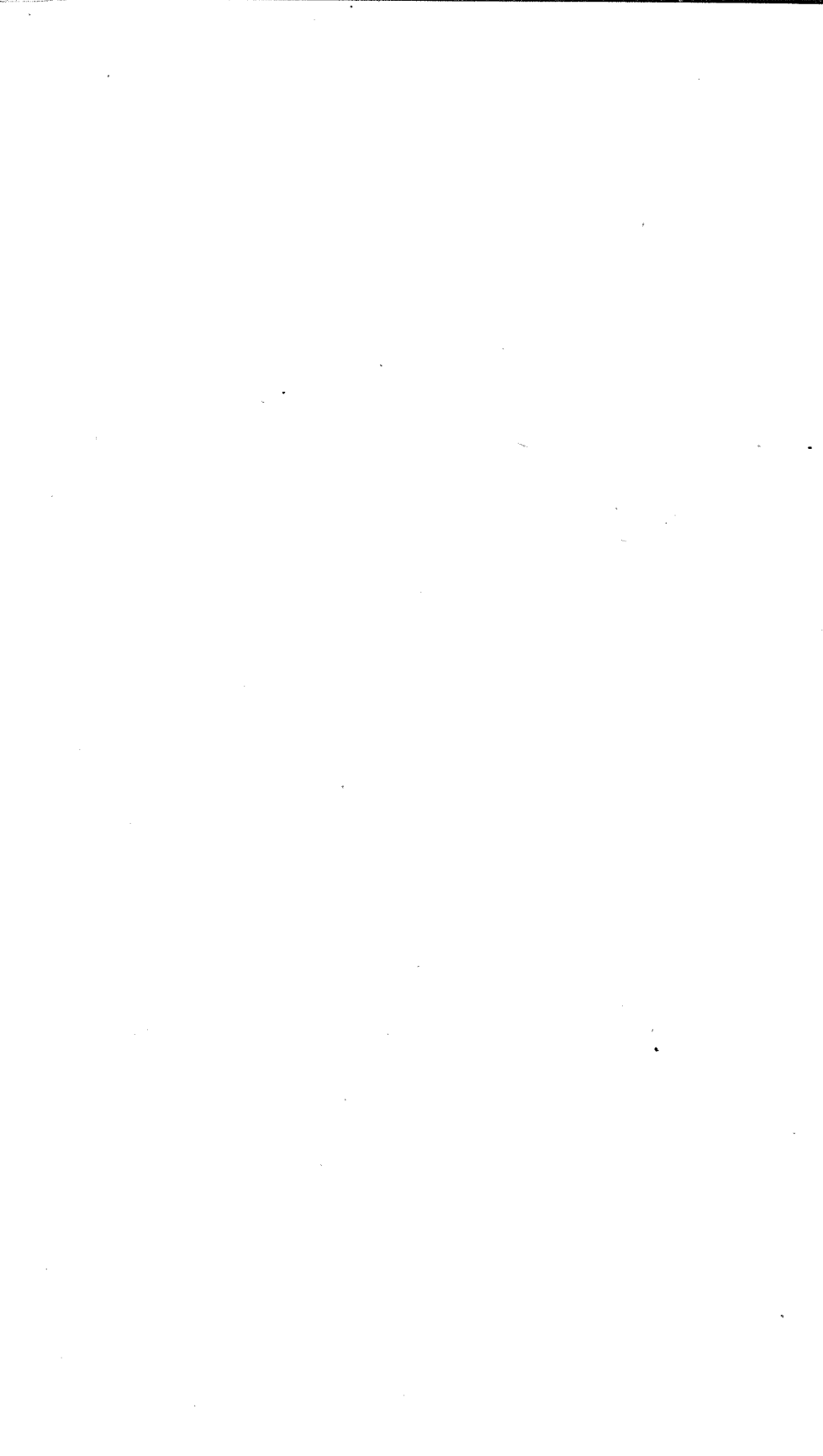
COUNTY	John E. Ramer (Rep.)	William F. Allen (Dem.)
Kit Carson .....	657	419
Lake .....	928	840
La Plata .....	327	826
Larimer .....	2,082	560
Las Animas .....	2,603	738
Lincoln .....	787	644
Logan .....	848	529
Mesa .....	1,384	655
Mineral .....	128	44
Moffat .....	277	227
Montezuma .....	205	612
Montrose .....	646	700
Morgan .....	959	201
Otero .....	870	369
Ouray .....	226	397
Park .....	123	211
Phillips .....	256	134
Pitkin .....	94	430
Prowers .....	677	317
Pueblo .....	2,730	2,908
Rio Blanco .....	139	169
Rio Grande .....	518	129
Routt .....	606	454
Saguache .....	242	292
San Juan .....	91	86
San Miguel .....	292	328
Sedgwick .....	303	103
Summit .....	100	283
Teller .....	998	1,737
Washington .....	529	308

ABSTRACT OF VOTES CAST AT  
**FOR SECRETARY OF STATE—Continued**

COUNTY	John E. Ramer (Rep.)	William F. Allen (Dem.)
Weld .....	3,517	1,122
Yuma .....	425	421
	58,103	36,397

Scattering, 6 Candidates. Total, 34 Votes.





## FOR AUDITOR OF STATE

COUNTY	Olie Thorson (Rep.)	H. H. Harbaugh (Rep.)	Arthur M. Stong (Rep.)	Charles H. Leckenby (Dem.)	Lloyd M. Davis (Dem.)
Adams .....	100	128	137	484	434
Alamosa .....	56	36	189	122	71
Arapahoe .....	391	285	339	400	251
Archuleta .....	80	44	118	172	64
Baca .....	143	75	129	161	196
Bent .....	104	71	53	169	100
Boulder .....	1,297	536	589	467	1,973
Chaffee .....	190	189	168	314	213
Cheyenne .....	228	86	153	182	132
Clear Creek .....	122	64	113	260	132
Conejos .....	360	88	364	65	26
Costilla .....	141	29	191	371	91
Crowley .....	222	122	200	213	251
Custer .....	34	20	37	114	47
Delta .....	563	286	498	305	235
Denver .....	6,214	4,557	4,313	4,954	2,726
Dolores .....	2	1	2	79	68
Douglas .....	81	29	58	83	35
Eagle .....	318	44	74	266	161
Elbert .....	79	46	63	113	130
El Paso .....	1,702	1,128	1,097	502	161
Fremont .....	279	344	259	306	141
Garfield .....	651	116	111	726	346
Gilpin .....	96	54	84	101	109
Grand .....	39	35	48	87	25
Gunnison .....	231	71	123	221	142
Hinsdale .....	25	21	5	61	34
Huerfano .....	964	107	76	188	112
Jackson .....	43	20	27	25	6
Jefferson .....	449	727	357	347	141
Kiowa .....	65	29	52	246	153

## FOR AUDITOR OF STATE—Continued

COUNTY	Olle Thorson (Rep.)	H. H. Harbough (Rep.)	Arthur M. Strong (Rep.)	Charles H. Leckenby (Dem.)	Roy M. Davis (Dem.)
Kit Carson .....	314	129	222	220	212
Lake .....	734	114	228	551	376
La Plata .....	99	94	137	626	287
Larimer .....	718	521	545	310	277
Las Animas .....	1,631	462	670	433	332
Lincoln .....	348	161	270	388	288
Logan .....	347	189	279	332	231
Mesa .....	766	318	416	461	218
Mineral .....	65	26	48	34	15
Moffat .....	156	51	71	204	75
Montezuma .....	53	83	76	495	208
Montrose .....	202	277	154	429	316
Morgan .....	527	215	229	106	103
Otero .....	384	172	298	236	154
Ouray .....	73	81	79	257	190
Park .....	66	24	37	124	116
Phillips .....	103	51	87	79	57
Pitkin .....	58	18	22	363	144
Prowers .....	255	167	233	165	158
Pueblo .....	861	1,365	806	1,864	1,386
Rio Blanco .....	87	29	40	165	46
Rio Grande .....	213	127	195	95	41
Routt .....	250	142	206	477	72
Saguache .....	127	66	98	177	142
San Juan .....	23	50	31	79	26
San Miguel .....	105	76	111	189	174
Sedgwick .....	135	81	95	64	40
Summit .....	50	20	44	244	75
Teller .....	326	262	430	846	987
Washington .....	218	98	192	168	149