

Do Not Take Away

State of Colorado

ABSTRACT OF VOTES CAST AT
THE GENERAL ELECTION HELD
THE SIXTH DAY OF NOVEMBER,
A. D. 1906, FOR STATE, LEGISLA-
TIVE AND DISTRICT OFFICERS
— AND THE —
CONSTITUTIONAL AMENDMENT.

COMPILED BY
TIMOTHY O'CONNOR
SECRETARY OF STATE

1907



1907
THE SMITH-BROOKS COMPANY, STATE PRINTERS
DENVER, COLORADO

ABSTRACT OF VOTES CAST FOR REPRESENTATIVES AT THE GENERAL ELECTION IN 1906—Continued.

Saguache County.

NAME.	No. of Votes.
W. A. Johnson	762
John Lawrence	765

San Miguel County

NAME.	No. of Votes.
A. B. Blainey	815
D. L. Dutton	180
Stephen R. Fitzgarrold.....	695

Rio Grande County.

NAME.	No. of Votes.
Robert G. Breckenridge	1,276
William A. Magill.....	756

Archuleta and Conejos Counties.

COUNTIES.	I. J. Richardson.	Clifton H. Wilder.
Archuleta	484	624
Conejos	1,258	1,961
Totals	1,742	2,585

Hinsdale and Mineral Counties.

COUNTIES.	Silas Frank.	H. V. McKinney.	C. C. Hood.
Hinsdale	209	223
Mineral	628	294	1
Totals	837	517	1

ABSTRACT OF VOTES CAST FOR REPRESENTATIVES AT THE GENERAL ELECTION IN 1906—Continued.

Baca, Las Animas and Prowers Counties.

COUNTIES.	John Faletti.	A. N. Parrish.	Charles Pinamonti.	W. T. Turpin.
Baca	126	209	5
Las Animas	3,107	5,037	597
Prowers	454	1,234	110	1
Totals	3,687	6,480	710	1

Dolores and Montezuma Counties.

COUNTIES.	William J. Blatchford.	F. M. Goodykoontz.	James A. Morris.
Dolores	136	70	28
Montezuma	519	454	102
Totals	655	524	130

Rio Blanco and Routt Counties.

COUNTIES.	Isaac Baer.	Archibald McLachlan.
Rio Blanco	484	332
Routt	860	1,116
Totals	1,344	1,448

Adams, Arapahoe, Denver, Logan, Morgan and Washington Counties.

COUNTIES.	Gustave R. Appel.	A. F. Browns.	John Bunney
Adams	54	970	806
Arapahoe	76	773	1,082
Denver	3,159	15,424	20,995
Logan	36	591	804
Morgan	25	564	916
Washington	5	213	344
Totals	3,355	18,540	24,947

ABSTRACT OF VOTES CAST FOR REPRESENTATIVES AT THE GENERAL ELECTION IN 1906—Continued.

Adams, Arapahoe, Denver, Phillips, Sedgwick and Yuma Counties.

COUNTIES.	Cuthbert F. Parker.	Peter Schirofsky.	George B. Weir.
Adams	806	55	970
Arapahoe	1,068	71	779
Denver	25,900	3,118	15,294
Phillips	316	6	276
Sedgwick	362	3	127
Yuma	794	130	578
Totals	29,246	3,383	18,024

Grand and Summit Counties.

COUNTIES.	D. W. Fall.	Elmer E. Miller.
Grand	327	478
Summit	679	421
Totals	1,006	899

Chaffee and Fremont Counties.

COUNTIES.	E. C. Clark.	A. A. MacLennan.	R. P. Rubin.
Chaffee	295	1,266	1,485
Fremont	285	2,912	2,743
Totals	580	4,178	4,228

Adams, Arapahoe, Boulder, Cheyenne, Denver, Elbert, Kit Carson and Lincoln Counties.

COUNTIES.	Walter E. Hickman.	Anderson J. Pugh.	John H. Rhinehart.
Adams	804	972	55
Arapahoe	1,072	763	76
Boulder	3,715	2,963	656
Cheyenne	205	63	20
Denver	26,076	14,259	3,241
Elbert	655	488	30
Kit Carson	440	278	19
Lincoln	260	154	9
Totals	33,227	19,940	4,106

ABSTRACT OF VOTES CAST.

ABSTRACT OF VOTES CAST FOR REPRESENTATIVES AT THE GENERAL ELECTION IN 1906—Concluded.

Adams, Arapahoe, Boulder and Denver Counties.

Counties.	Fred W. Bader.	W. G. Houston.	Marcus D. Hudgins.
Adams	55	972	804
Arapahoe	72	778	1,068
Boulder	659	3,217	3,537
Denver	3,211	14,119	26,033
Totals	3,997	19,086	31,442

Delta County.

NAME.	No. of Votes.
John Griffith	497
Newton M. Hiestand.....	1,038
Merle D. Vincent.....	1,247

Bent and Kiowa Counties.

COUNTIES.	Dr. George D. Dulin.	P. A. Leedham.
Bent	723	477
Kiowa	156	162
Totals	879	639

Montrose County.

NAME.	No. of Votes.
William L. Cain.....	327
Charles E. Duncan.....	1,062
O. M. Kem.....	1,084

San Juan County.

NAME.	No. of Votes.
F. J. Bawden.....	732
Casper Malchus	426
J. N. Pascoe.....	579

ABSTRACT OF VOTES CAST FOR DISTRICT JUDGES AT THE GENERAL ELECTION IN 1906.

First Judicial District.

COUNTIES.	Flor Ashbaugh.	Allison H. De France.
Arapahoe	1,030	852
Clear Creek	958	1,332
Gilpin	1,163	983
Grand	381	435
Jefferson	2,017	1,987
Totals	5,549	5,589

Second Judicial District.

COUNTIES.	George W. Allen.	Carlton M. Bliss.	Samuel L. Carpenter.	John H. Denison.	Addison J. Fowler.
Denver	24,352	24,381	16,708	3,366	4,300

Second Judicial District—Continued.

COUNTIES.	L. D. Hobson.	Lucius W. Hoyt.	Frank T. Johnson.	James R. Killian.	John I. Mullins.
Denver	514	16,921	16,035	14,976	15,415

Second Judicial District—Concluded.

COUNTIES.	Harry C. Riddle.	Hubert L. Shattuck.	Ebenezer T. Wells.	Greeley W. Whitford.
Denver	23,580	23,517	2,888	23,237

Third Judicial District.

COUNTIES.	Henry Hunter.	Allen M. Lambricht.
Baca	164	173
Bent	480	723
Huerfano	2,603	442
Las Animas	5,085	3,098
Prowers	955	738
Totals	9,287	5,179

ABSTRACT OF VOTES CAST.

ABSTRACT OF VOTES CAST FOR DISTRICT JUDGES AT THE GENERAL
ELECTION IN 1906—Continued.

Third Judicial District.

(To Fill Vacancy.)

COUNTIES.	Henry Hunter.	Allen M. Lambricht.	W. E. Fee.
Huerfano	619
Prowers	108	21	1
Totals	727	21	1

Fourth Judicial District.

COUNTIES.	Henry C. Cassidy.	Daniel A. Ferguson.	Joseph E. Ferguson.	Murat Masterson.	W. S. Morris.
Cheyenne	5	3	56	28	183
Douglas	9	7	574	5	680
Elbert	37	28	494	27	634
El Paso	285	149	3,934	207	5,297
Kit Carson	11	10	246	11	466
Lincoln	7	3	156	6	256
Teller	60	60	4,122	34	3,185
Totals	414	260	9,582	318	10,701

Fourth Judicial District—Concluded.

COUNTIES.	George W. Musser.	James Owen.	William C. Robinson.	J. W. Sheafor.
Cheyenne	54	180	58	184
Douglas	571	673	572	679
Elbert	492	636	495	624
El Paso	4,585	4,911	4,443	5,051
Kit Carson	243	464	237	468
Lincoln	153	256	156	263
Teller	4,096	3,130	4,056	3,263
Totals	10,194	10,250	10,017	11,131

ABSTRACT OF VOTES CAST FOR DISTRICT JUDGES AT THE GENERAL
ELECTION IN 1906—Continued.

Fourth Judicial District.

(To Fill Vacancy.)

COUNTIES.	J. W. Sheafor.	George W. Musser.	William C. Robinson.
Cheyenne	189
Douglas	693	1
Elbert	579
El Paso	5,795	2
Kit Carson	488
Lincoln	272
Teller	3,311
Totals	11,427	1	2

Fifth Judicial District.

COUNTIES.	Charles Cavender.	Frank W. Owers.
Eagle	698	579
Lake	3,081	1,916
Summit	483	622
Totals	4,262	3,117

Sixth Judicial District.

COUNTIES.	Barney Haughey.	Charles A. Pike.	James L. Russell.
Archuleta	17	710	391
Dolores	18	82	131
La Plata	223	1,644	1,114
Montezuma	63	618	398
San Juan	397	559	783
Totals	718	3,613	2,817

Seventh Judicial District.

COUNTIES.	Ira D. McFadden.	Sprigg Shackelford.	Theron Stevens.
Delta	464	1,193	1,089
Gunnison	118	995	1,136
Hinsdale
Mesa	528	2,455	1,833
Montrose	341	944	1,138
Ouray	88	550	1,142
San Miguel	170	887	618
Totals	1,709	7,024	6,956

ABSTRACT OF VOTES CAST.

ABSTRACT OF VOTES CAST FOR DISTRICT JUDGES AT THE GENERAL ELECTION IN 1906—Continued.

Eighth Judicial District.

COUNTIES.	Frank J. Annis.	Christian A. Bennett.	C. W. Benson.
Boulder	2,999	3,276	634
Larimer	2,234	2,190	309
Morgan	648	776	26
Weld	2,619	3,098	144
Totals	8,500	9,340	1,113

Eighth Judicial District—Continued.

COUNTIES.	Harry P. Gamble.	James E. Garrigues.	Winona Washburn Taylor.
Boulder	3,620	3,584	601
Larimer	2,833	2,956	298
Morgan	896	700	21
Weld	3,442	3,944	139
Totals	10,791	11,184	1,059

Ninth Judicial District.

COUNTIES.	Charles W. Darrow.	John T. Shumate.
Garfield
Pitkin	647	1,094
Rio Blanco	302	518
Routt	865	1,109
Totals	1,814	2,721

Tenth Judicial District.

COUNTIES.	George W. Collins.	Charles S. Essex.	Lyman I. Henry.	James A. Park.	George F. Patrick.	J. Ed. Ritzer.
Kiowa	18	144	138	136	47	144
Otero	59	2,288	2,330	2,349	143	2,302
Pueblo	289	6,668	5,780	6,132	612	6,456
Totals	366	9,100	8,248	8,617	802	8,902

ABSTRACT OF VOTES CAST FOR DISTRICT JUDGES AT THE GENERAL ELECTION IN 1906—Concluded.

Eleventh Judicial District.

COUNTIES.	Morton S. Bailey.	George Champion.	Judge Newhouse.	V. G. Holliday.	Clyde Dawson.	A. Redfield.
Chaffee	1,643
Custer	570
Fremont	3,081
Park	652	1	1	2	1	1
Totals	5,946	1	1	2	1	1

Twelfth Judicial District.

COUNTIES.	Charles C. Holbrook.	A. L. Moses.	Jesse Wiley.	C. M. Corlett.	August Lindow.	Jennie Guyher.
Conejos	2,063
Costilla	1,401
Mineral	820	3	1
Rio Grande	1,962	1	2	..
Saguache	1,464	3
Totals	7,710	3	1	1	2	3

Thirteenth Judicial District.

COUNTIES.	N. Eugene Brasie.	Haslett P. Burke.
Adams	887	896
Logan	448	1,005
Phillips	240	357
Sedgwick	170	328
Washington	222	360
Yuma	699	816
Totals	2,666	3,762

ABSTRACT OF VOTES CAST.

"PERMITTING VOTING MACHINES."

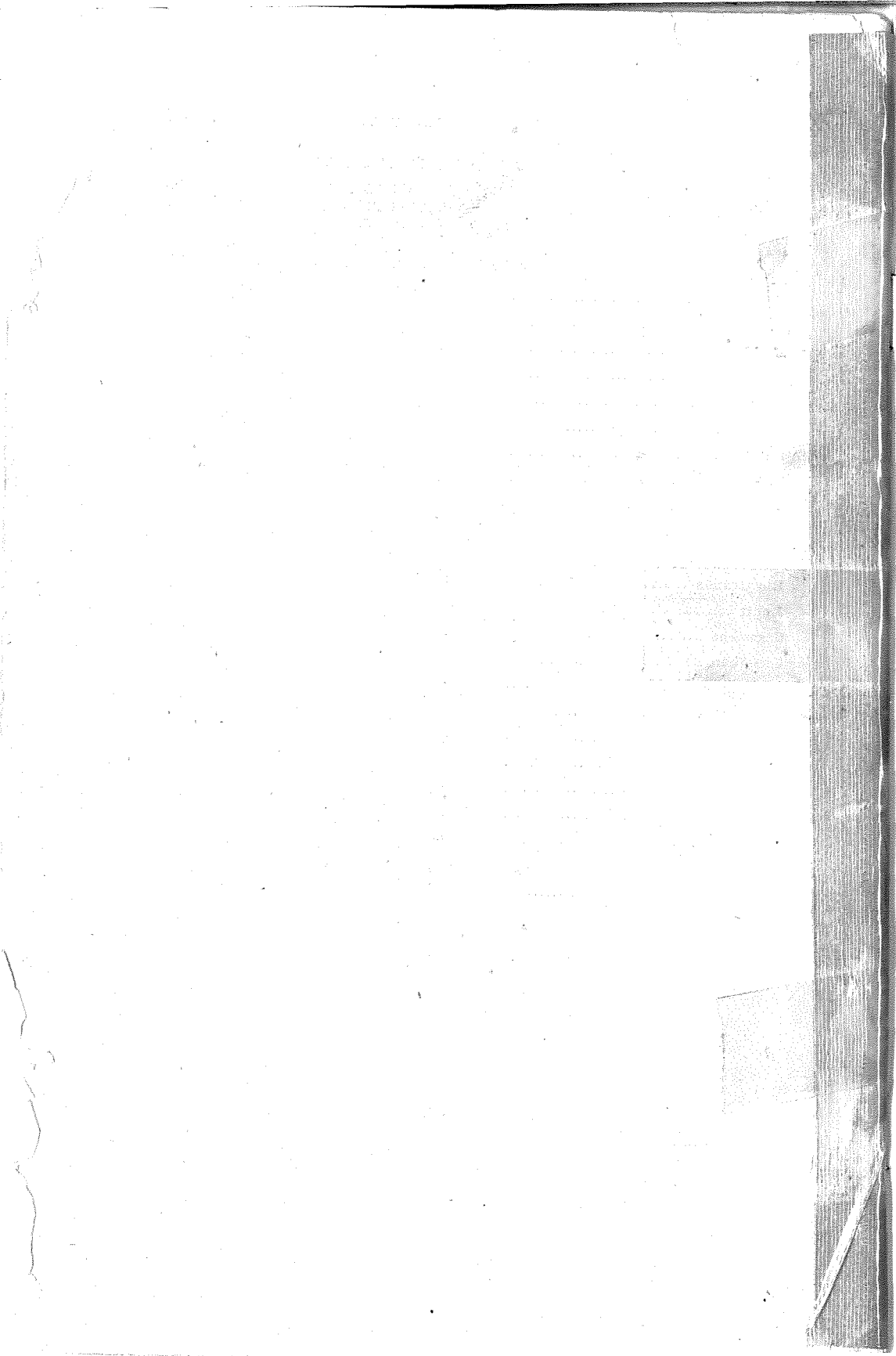
ABSTRACT OF VOTES CAST ON THE PROPOSED AMENDMENT TO ARTICLE VII, SECTION 8, OF THE CONSTITUTION OF COLORADO, AT THE GENERAL ELECTION IN 1906.

COUNTIES.	For the Amendment.	Against the Amendment.
Adams	229	71
Arapahoe	275	128
Archuleta	81	40
Baca	13	38
Bent	127	84
Boulder	1,357	335
Chaffee	427	148
Cheyenne	26	21
Clear Creek	384	116
Conejos	257	306
Costilla	100	33
Custer	62	77
Delta	458	153
Denver	7,205	1,451
Dolores	19	23
Douglas	97	127
Eagle	292	113
Elbert	113	195
El Paso	1,468	573
Fremont	934	240
Garfield	455	142
Gilpin	184	194
Grand	68	30
Gunnison	372	114
Hinsdale	64	21
Huerfano	148	370
Jefferson	370	333
Kiowa	27	35
Kit Carson	77	73
Lake	956	231
La Plata	502	177
Larimer	697	256
Las Animas	459	838
Lincoln	35	36
Logan	178	146
Mesa	616	154
Mineral	122	37

"PERMITTING VOTING MACHINES."

ABSTRACT OF VOTES CAST ON THE PROPOSED AMENDMENT TO ARTICLE VII, SECTION 8, OF THE CONSTITUTION OF COLORADO, AT THE GENERAL ELECTION IN 1906—Concluded.

COUNTIES.	For the Amendment.	Against the Amendment.
Montrose	269	131
Montezuma	145	73
Morgan	192	72
Otero	534	211
Ouray	239	188
Park	150	67
Phillips	57	67
Pitkin	310	81
Prowers	222	74
Pueblo	2,214	548
Rio Blanco	110	40
Rio Grande	283	73
Routt	316	118
Saguache	182	97
San Juan	248	53
San Miguel	260	98
Sedgwick	42	37
Summit	211	54
Teller	806	147
Washington	95	47
Weld	1,082	335
Yuma	230	397
Totals	27,460	10,467



Smead[®]

No. 2-155C

HASTINGS, MN - LOS ANGELES
LOGAN, OH - MCGREGOR, TX U. S. A.