

STATE OF COLORADO

Abstract of Votes Cast

AT THE

Primary Election

Held on the Tenth Day of September,
A. D. 1912

AND AT THE

General Election

Held on the Fifth Day of November,
A. D. 1912

FOR

Presidential Electors, United States Senators,
Congressmen, and State, Legislative
and District Officers

ALSO THE

Proposed Constitutional Amendments
Initiated and Referred Bills

COMPILED FROM OFFICIAL RETURNS

BY

JAMES B. PEARCE
Secretary of State

1913



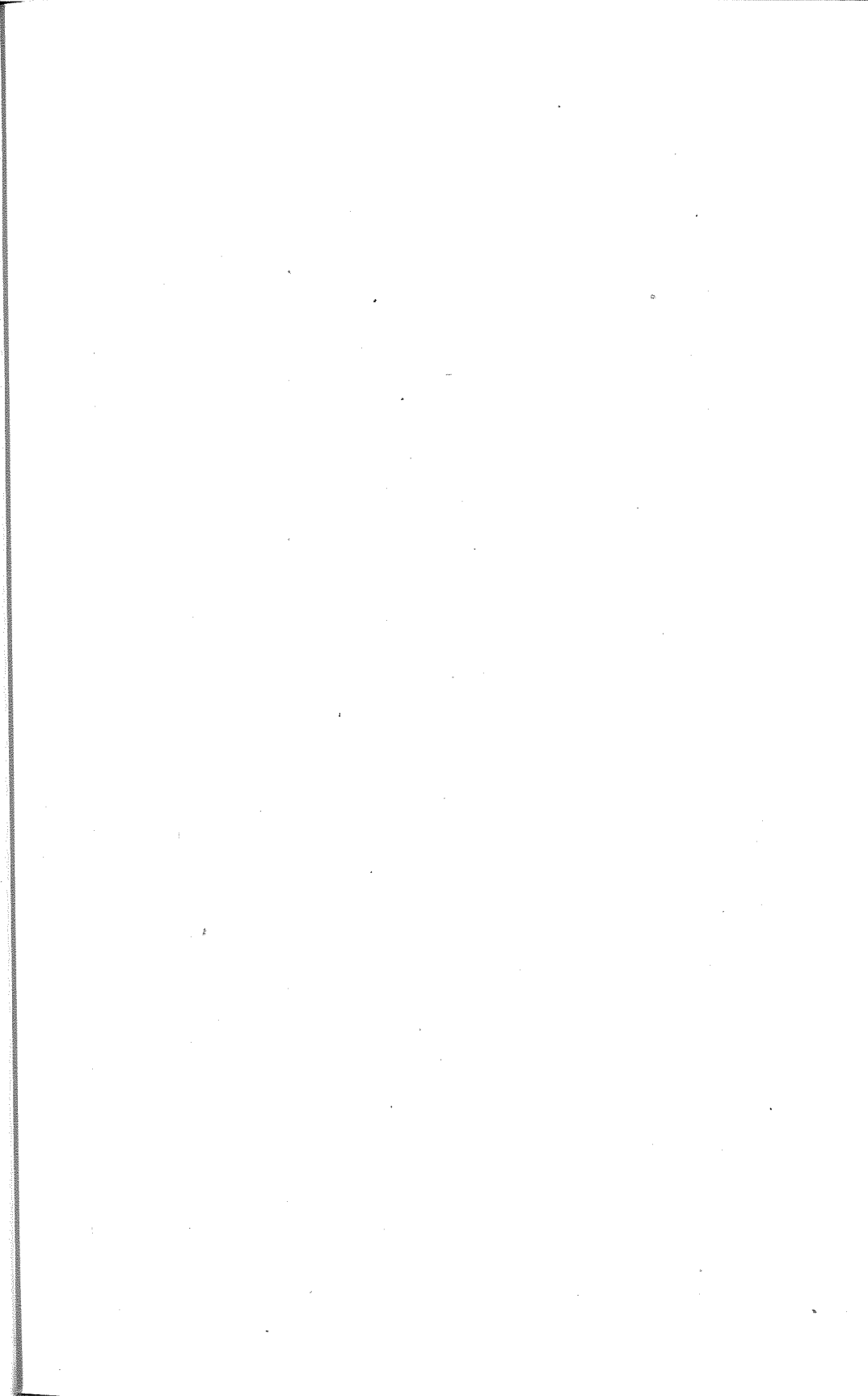
DENVER, COLORADO
THE SMITH-BROOKS PRINTING CO., STATE PRINTERS
1913

ABSTRACT OF VOTES CAST AT A PRIMARY ELECTION HELD ON TUESDAY, SEPTEMBER 10, A. D. 1912, FOR CONGRESSMAN FIRST CONGRESSIONAL DISTRICT

COUNTIES	Atterson W. Rucker (Dem.)	George J. Kindel (Dem.)	Henry A. Drum (Dem.)	Tice W. Means (Rep.)	Michael C. Harrington (Dem.)
Adams	545	375	53	156	97
Arapahoe	423	380	30	531	118
Boulder	650	556	840	720	216
Denver	3,415	5,656	1,299	3,519	3,516
Jefferson	536	370	26	949	143
Lake	527	422	80	323	621
Larimer	409	200	66	1,153	148
Logan	203	96	50	480	163
Morgan	172	97	29	912	55
Park	123	101	4	91	33
Phillips	111	87	10	254	39
Sedgwick	91	26	5	292	9
Washington	207	74	27	415	35
Weld	683	519	106	1,464	290
Yuma	342	71	17	352	25
Total	8,437	9,030	2,642	11,611	5,538

Scattering, 9 candidates. Total, 11 votes.

Kindel over Rucker..... 593



ABSTRACT OF VOTES CAST AT A PRIMARY ELECTION HELD ON TUESDAY, SEPTEMBER 10, A. D. 1912, FOR CONGRESSMAN SECOND CONGRESSIONAL DISTRICT

COUNTIES	Harry H. Seldonridge (Dem.)	Thomas J. Ehrheart (Dem.)	Benjamin R. Kobey (Dem.)	Charles A. Ballreich (Rep.)	H. Van Buskirk (Rep.)
Archuleta	146	52	31	203	96
Baca	112	49	23	159	47
Bent	92	101	34	119	144
Chaffee	137	1,081	77	110	60
Cheyenne	179	76	27	270	187
Clear Creek	288	202	185	123	26
Conejos	1,198	476	163	723	85
Costilla	88	46	22	916	68
Crowley	216	76	31	142	65
Custer	128	112	34	63	13
Delta	359	206	191	248	288
Dolores	50	34	21	9	12
Douglas	132	94	19	167	62
Eagle	196	151	143	132	61
Elbert	86	56	18	342	191
El Paso	1,810	311	149	1,818	2,707
Fremont	772	581	224	387	203
Garfield	463	270	322	324	184
Gilpin	144	108	113	106	44
Grand	72	54	18	98	83
Gunnison	220	395	154	71	32
Hinsdale	23	27	12	52	11
Huerfano	236	54	85	1,844	92
Jackson	20	11	11	41	14
Kiowa	173	33	10	161	96
Kit Carson	147	61	41	312	134
La Plata	767	475	376	210	50
Las Animas	951	234	189	2,445	483
Lincoln	199	75	50	339	175
Mesa	477	136	161	458	917
Mineral	126	80	51	32	10
Moffat	90	20	10	116	40
Montezuma	335	253	143	52	25
Montrose	278	422	155	147	138

ABSTRACT OF VOTES CAST AT A PRIMARY ELECTION HELD ON TUESDAY, SEPTEMBER 10, A. D. 1912, FOR CONGRESSMAN SECOND CONGRESSIONAL DISTRICT—Continued

COUNTIES	Harry H. Seldomridge (Dem.)	Thomas J. Ehrheart (Dem.)	Benjamin R. Kobey (Dem.)	Charles A. Ballreich (Rep.)	H. Van Buskirk (Rep.)
Otero	736	304	124	276	163
Ouray	139	115	106	52	28
Pitkin	185	99	480	93	22
Prowers	155	121	43	179	49
Pueblo	1,816	2,326	754	1,285	326
Rio Blanco	85	47	21	73	19
Rio Grande	168	228	65	430	244
Routt	247	144	84	182	105
Saguache	132	224	38	336	83
San Juan	99	121	119	74	35
San Miguel	107	90	68	227	85
Summit	226	95	75	45	19
Teller	1,372	782	586	176	127
Total	16,177	11,108	5,856	16,167	8,148

Scattering, 2 candidates. Total, 3 votes.

Seldomridge over Ehrheart..... 5,069

Ballreich over Van Buskirk..... 8,019

ABSTRACT OF VOTES CAST AT A PRIMARY ELECTION HELD ON TUESDAY, SEPTEMBER 10, A. D. 1912, FOR JUDGE SUPREME COURT—TEN-YEAR TERM

COUNTIES	John R. Dixon (Dem.)	Tully Scott (Dem.)	Fred M. Dickerson (Dem.)	John Campbell (Rep.)	Rees D. Rees (Rep.)
Adams	456	543	52	124	53
Arapahoe	371	505	63	358	140
Archuleta	118	84	30	230	70
Baca	67	118	7	172	30
Bent	92	145	26	177	95
Boulder	737	1,277	195	706	143
Chaffee	506	540	144	136	41
Cheyenne	87	171	33	339	142
Clear Creek	333	343	72	138	21
Conejos	1,232	385	133	740	63
Costilla	103	51	11	939	42
Crowley	122	198	24	146	53
Custer	105	180	27	63	11
Delta	155	273	341	295	267
Denver	6,559	6,420	685	2,826	1,600
Dolores	22	76	10	13	11
Douglas	58	171	26	225	25
Eagle	244	175	72	158	38
Elbert	37	100	20	442	115
El Paso	735	1,228	184	2,783	2,000
Fremont	479	1,072	125	487	112
Garfield	434	541	100	372	144
Gilpin	148	217	39	125	27
Grand	52	94	10	156	40
Gunnison	342	348	99	88	23
Hinsdale	24	35	5	55	6
Huerfano	145	220	21	1,891	79
Jackson	15	28	2	52	6
Jefferson	262	731	67	819	201
Kiowa	188	24	10	198	61
Kit Carson	124	100	38	377	85
Lake	540	890	191	251	98
La Plata	767	699	235	201	57
Larimer	311	432	75	1,017	229

ABSTRACT OF VOTES CAST AT A PRIMARY ELECTION HELD ON TUESDAY, SEPTEMBER 10, A. D. 1912, FOR JUDGE SUPREME COURT—TEN-YEAR TERM—Continued

COUNTIES	John R. Dixon (Dem.)	Tully Scott (Dem.)	Fred M. Dickerson (Dem.)	John Campbell (Rep.)	Rees D. Rees (Rep.)
Las Animas	964	320	95	2,402	419
Lincoln	132	153	51	392	132
Logan	140	312	50	395	147
Mesa	311	416	87	637	809
Mineral	121	111	29	34	4
Moffat	51	66	9	138	28
Montezuma	328	389	104	65	17
Montrose	324	447	136	209	87
Morgan	138	197	16	723	278
Otero	490	677	114	321	102
Ouray	220	126	60	69	9
Park	43	198	18	86	19
Phillips	87	126	32	211	50
Pitkin	277	343	75	102	17
Prowers	147	159	28	209	23
Pueblo	2,668	2,054	493	1,112	401
Rio Blanco	95	61	13	89	8
Rio Grande	155	281	43	557	138
Routt	202	280	42	244	63
Saguache	147	230	26	377	49
San Juan	139	151	73	72	32
San Miguel	145	96	48	287	40
Sedgwick	63	60	7	255	53
Summit	218	172	45	55	8
Teller	691	2,404	193	245	72
Washington	149	144	45	292	143
Weld	623	874	119	1,254	325
Yuma	201	183	48	298	100
Total	25,259	29,444	5,271	28,319	9,692

Scattering, 5 candidates. Total, 5 votes.

Scott over Dixon..... 4,185

Campbell over Rees..... 18,727

ABSTRACT OF VOTES CAST AT A PRIMARY ELECTION HELD ON TUESDAY, SEPTEMBER 10, A. D. 1912, FOR GOVERNOR

COUNTIES	Joseph H. Maupin (Dem.)	Elias M. Ammons (Dem.)	Thomas J. Tynan (Dem.)	Clifford C. Parks (Rep.)	Philip B. Stewart (Rep.)
Adams	107	739	244	87	99
Arapahoe	164	614	247	216	296
Archuleta	39	178	23	185	116
Baca	71	79	36	159	57
Bent	29	55	217	120	184
Boulder	247	1,009	1,241	533	344
Chaffee	418	484	388	101	85
Cheyenne	67	82	144	288	206
Clear Creek	140	413	266	118	42
Conejos	686	901	259	695	100
Costilla	77	61	30	900	90
Crowley	156	111	90	99	121
Custer	227	48	64	62	16
Delta	204	346	241	148	470
Denver	3,192	6,758	4,760	1,896	2,566
Dolores	25	63	30	9	15
Douglas	6	274	11	137	123
Eagle	130	305	117	162	51
Elbert	36	98	32	278	286
El Paso	433	1,091	684	1,469	3,890
Fremont	1,295	506	329	335	309
Garfield	165	772	235	455	165
Gilpin	38	211	176	102	60
Grand	2	204	5	94	100
Gunnison	161	578	159	75	48
Hinsdale	21	38	13	47	15
Huerfano	159	180	43	1,859	129
Jackson	11	37	2	36	22
Jefferson	88	786	250	253	799
Kiowa	177	23	24	144	130
Kit Carson	60	158	48	311	173
Lake	398	673	623	220	159
La Plata	274	1,065	481	163	102
Larimer	149	492	245	715	673
Las Animas	817	409	189	2,320	682

ABSTRACT OF VOTES CAST AT A PRIMARY ELECTION HELD ON TUESDAY, SEPTEMBER 10, A. D. 1912, FOR GOVERNOR

COUNTIES	Joseph H. Maupin (Dem.)	Elias M. Ammons (Dem.)	Thomas J. Tynan (Dem.)	Clifford C. Parks (Rep.)	Philip B. Stewart (Rep.)
Lincoln	100	175	72	303	240
Logan	107	265	135	217	376
Mesa	197	344	330	452	1,180
Mineral	83	136	73	34	10
Moffat	22	93	23	126	51
Montezuma	106	666	134	49	44
Montrose	120	602	287	127	192
Morgan	45	234	84	547	533
Otero	121	628	635	266	189
Ouray	113	184	143	47	34
Park	57	181	37	55	40
Phillips	88	177	45	152	128
Pitkin	117	503	108	115	13
Prowers	72	180	111	187	53
Pueblo	1,269	575	3,959	961	677
Rio Blanco	70	95	23	96	15
Rio Grande	55	325	134	356	389
Routt	83	418	72	202	111
Saguache	113	242	73	312	122
San Juan	89	198	90	54	50
San Miguel	74	130	103	209	114
Sedgwick	44	71	15	166	160
Summit	70	298	95	39	31
Teller	691	1,472	996	134	219
Washington	118	147	78	229	215
Weld	272	917	474	890	782
Yuma	121	252	65	221	200
Total	14,686	29,349	21,037	21,247	18,676

Scattering, 7 candidates. Total, 19 votes.

Ammons over Tynan..... 8,312

Parks over Stewart..... 2,571

ABSTRACT OF VOTES CAST AT A PRIMARY ELECTION HELD ON TUESDAY, SEPTEMBER 10, A. D. 1912, FOR LIEUTENANT-GOVERNOR

COUNTIES	Benjamin F. Montgomery (Dem.)	Ben E. Beshoar (Dem.)	Herrmann W. Kluge (Dem.)	R. P. Rubin (Dem.)	Ezra T. Elliott (Rep.)	Robert G. Davenport (Rep.)
Adams	629	118	79	97	117	50
Arapahoe	452	230	72	66	336	143
Archuleta	90	23	12	93	193	99
Baca	97	47	14	18	144	61
Bent	103	89	13	35	121	157
Boulder	973	478	350	307	578	239
Chaffee	337	81	65	735	100	74
Cheyenne	194	28	28	28	285	190
Clear Creek...	388	127	75	82	120	31
Conejos	765	723	121	175	719	79
Costilla	74	44	14	22	920	72
Crowley	206	63	14	24	115	71
Custer	182	44	33	25	53	19
Delta	457	68	84	62	209	349
Denver	6,876	2,624	1,954	777	2,525	1,679
Dolores	57	13	5	19	8	13
Douglas	172	51	15	21	157	84
Eagle	287	56	68	86	144	58
Elbert	81	36	22	15	298	259
El Paso.....	1,126	334	338	229	1,780	2,874
Fremont	822	339	113	288	401	186
Garfield	760	90	151	73	329	185
Gilpin	190	69	50	49	102	50
Grand	102	26	11	11	115	72
Gunnison	379	122	83	150	74	32
Hinsdale	22	6	7	29	47	10
Huerfano	93	198	12	21	1,814	124
Jackson	31	4	5	2	35	20
Jefferson	500	307	98	58	751	247
Kiowa	181	18	10	10	138	122
Kit Carson....	146	32	38	29	283	166
Lake	855	285	174	195	241	107
La Plata.....	867	272	168	249	154	87
Larimer	539	131	66	55	771	463
Las Animas..	196	1,199	20	14	2,164	841

ABSTRACT OF VOTES CAST AT A PRIMARY ELECTION HELD ON TUESDAY, SEPTEMBER 10, A. D. 1912, FOR LIEUTENANT-GOVERNOR—
Continued

COUNTIES	Benjamin F. Montgomery (Dem.)	Fen B. Beshoar (Dem.)	Hermann W. Kluge (Dem.)	R. P. Rubin (Dem.)	Ezra T. Elliott (Rep.)	Robert G. Davenport (Rep.)
Lincoln	200	48	32	41	315	265
Logan	217	45	48	144	249	283
Mesa	113	29	671	30	446	957
Mineral	109	71	30	62	37	6
Moffat	101	13	3	11	113	47
Montezuma	494	104	68	89	39	38
Montrose	507	117	101	136	152	142
Morgan	203	52	56	25	585	414
Otero	719	225	92	121	274	158
Ouray	176	60	55	69	53	26
Park	182	25	11	22	66	29
Phillips	140	23	35	38	190	79
Pitkin	486	64	57	36	87	32
Prowers	184	60	26	33	182	46
Pueblo	2,469	1,292	654	658	946	585
Rio Blanco	156	15	7	13	67	25
Rio Grande	274	77	40	55	591	182
Routt	316	107	24	55	207	94
Saguache	258	48	27	57	332	84
San Juan	162	62	59	54	81	37
San Miguel	121	58	43	36	217	98
Sedgwick	70	26	7	14	195	117
Summit	224	94	46	47	43	22
Teller	1,943	524	176	221	170	132
Washington	211	46	31	36	246	190
Weld	944	205	205	134	1,063	495
Yuma	233	74	53	54	229	176
Total	30,441	11,944	7,064	6,500	23,516	14,012

Scattering, 3 candidates. Total, 3 votes.

Montgomery over Beshoar..... 18,497

Elliott over Davenport..... 9,504

ABSTRACT OF VOTES CAST AT A PRIMARY ELECTION HELD ON TUES-
DAY, SEPTEMBER, 10, A. D. 1912, FOR SECRETARY OF STATE

COUNTIES	James B. Pearce (Dem.)	M. P. Capp (Dem.)	Thos. M. Ramer (Dem.)	Leo Vincent (Dem.)	John E. Ramer (Rep.)
Adams	403	308	65	211	189
Arapahoe	464	189	37	158	524
Archuleta	154	19	17	30	268
Baca	77	25	20	58	206
Bent	198	34	12	20	227
Boulder	419	1,856	47	276	818
Chaffee	669	277	95	148	161
Cheyenne	166	44	32	49	464
Clear Creek	419	168	46	108	147
Conejos	960	558	68	161	768
Costilla	100	33	9	14	976
Crowley	287	25	24	14	195
Custer	146	57	27	50	66
Delta	273	177	46	232	491
Denver	6,558	4,343	539	2,017	3,756
Dolores	39	14	14	27	20
Douglas	93	110	14	33	243
Eagle	238	85	67	132	186
Elbert	104	19	8	28	511
El Paso	810	656	183	449	3,951
Fremont	837	462	114	200	552
Garfield	402	341	86	242	497
Gilpin	169	122	27	83	142
Grand	86	27	6	36	180
Gunnison	317	265	54	155	99
Hinsdale	31	12	7	12	54
Huerfano	163	149	14	14	1,906
Jefferson	26	10	3	5	59
Jefferson	433	353	51	153	976
Kiowa	187	13	7	12	214
Kit Carson	163	38	25	30	443
Lake	756	421	365	194	328
La Plata	1,012	169	166	332	223
Larimer	411	215	63	114	1,431

ABSTRACT OF VOTES CAST AT A PRIMARY ELECTION HELD ON TUESDAY, SEPTEMBER, 10, A. D. 1912, FOR SECRETARY OF STATE—Continued

COUNTIES	James B. Pearce (Dem.)	M. P. Capp (Dem.)	Thos. M. Ramey (Dem.)	Leo Vincent (Dem.)	John E. Ramey (Rep.)
Las Animas	1,064	171	69	78	2,807
Lincoln	174	44	25	82	499
Logan	292	42	40	89	487
Mesa	345	193	51	220	1,184
Mineral	164	60	12	31	40
Moffat	78	13	9	26	152
Montezuma	419	61	71	262	71
Montrose	376	131	70	342	264
Morgan	201	55	29	64	912
Otero	1,039	93	74	94	392
Ouray	187	79	26	121	72
Park	124	20	15	89	95
Phillips	96	45	14	93	255
Pitkin	433	57	51	147	114
Prowers	143	66	26	93	225
Pueblo	2,445	1,601	477	702	1,407
Rio Blanco	97	13	21	36	85
Rio Grande	170	152	33	106	643
Routt	253	61	44	163	292
Saguache	189	82	33	92	395
San Juan	198	85	15	58	95
San Miguel	155	34	25	53	289
Sedgwick	79	21	5	19	302
Summit	234	87	32	68	59
Teller	1,596	505	255	502	296
Washington	195	35	34	64	427
Weld	622	612	105	268	1,499
Yuma	231	74	33	87	384
Total	29,169	16,076	4,042	9,846	35,013

Scattering, 10 candidates. Total, 14 votes.

Pearce over Capp 13,093

ABSTRACT OF VOTES CAST AT A PRIMARY ELECTION HELD ON TUES-
DAY, SEPTEMBER 10, A. D. 1912, FOR AUDITOR OF STATE

COUNTIES	Roady Kenehan (Dem.)	Charles Leckenby (Dem.)	Lillian H. Johnson (Dem.)	Benjamin C. Catren, Jr. (Rep.)	Arthur F. Malcom (Rep.)
Adams	639	188	132	82	75
Arapahoe	533	204	138	266	194
Archuleta	81	81	64	196	93
Baca	66	74	38	135	64
Bent	123	94	37	80	96
Boulder	1,422	441	334	524	257
Chaffee	678	278	221	98	71
Cheyenne	129	70	87	220	243
Clear Creek	570	118	104	161	16
Conejos	1,087	386	255	674	119
Costilla	102	21	35	871	90
Crowley	220	70	38	122	63
Custer	164	67	58	50	23
Delta	451	115	144	202	333
Denver	9,881	2,100	1,693	2,188	1,944
Dolores	61	15	34	8	15
Douglas	165	51	42	139	98
Eagle	271	116	128	115	79
Elbert	84	33	33	276	251
El Paso	1,160	514	399	1,730	2,789
Fremont	969	461	212	374	206
Garfield	606	286	181	279	221
Gilpin	274	62	54	98	53
Grand	75	54	29	98	85
Gunnison	532	139	108	51	49
Hinsdale	54	3	4	44	10
Huerfano	287	33	21	1,800	114
Jackson	30	13	2	29	18
Jefferson	638	276	109	695	308
Kiowa	66	121	25	131	124
Kit Carson	133	61	57	277	168
Lake	1,188	207	256	213	128
La Plata	866	378	534	129	97
Larimer	499	201	104	683	487

ABSTRACT OF VOTES CAST AT A PRIMARY ELECTION HELD ON TUESDAY, SEPTEMBER 10, A. D. 1912, FOR AUDITOR OF STATE—Continued

COUNTIES	Roady Kenehan (Dem.)	Charles Leckenby (Dem.)	Lillian H. Johnson (Dem.)	Benjamin C. Catren, Jr. (Rep.)	Arthur F. Malcom (Rep.)
Las Animas	1,155	96	116	2,331	521
Lincoln	164	78	78	269	232
Logan	249	145	72	248	262
Mesa	423	225	142	378	852
Mineral	196	50	27	31	9
Moffat	37	75	16	103	52
Montezuma	274	281	327	29	37
Montrose	553	159	188	148	145
Morgan	240	63	47	546	437
Otero	791	217	202	263	150
Ouray	240	95	83	51	25
Park	169	42	36	55	39
Phillips	114	53	66	119	149
Pitkin	383	164	127	77	39
Prowers	152	97	73	172	50
Pueblo	3,098	993	1,018	946	568
Rio Blanco	74	65	28	56	37
Rio Grande	251	111	99	340	323
Routt	166	369	28	157	127
Saguache	250	64	76	291	113
San Juan	270	26	97	51	44
San Miguel	187	36	55	207	96
Sedgwick	55	38	32	175	126
Summit	240	130	57	40	23
Teller	1,717	516	605	135	153
Washington	162	75	88	207	216
Weld	1,141	233	200	830	666
Yuma	211	122	86	192	193
Total	37,057	11,942	9,778	21,485	14,685

Scattering, 1.

Kenehan over Leckenby.....	25,115
Catren over Malcom.....	6,800

ABSTRACT OF VOTES CAST AT A PRIMARY ELECTION HELD ON TUES-
DAY, SEPTEMBER 10, A. D. 1912, FOR STATE TREASURER

COUNTIES	Michael A. Luddy (Dem.)	Marshall H. Van Fleet (Dem.)	James B. Dick (Rep.)	Oscar D. Cass (Rep.)
Adams	710	195	89	71
Arapahoe	613	179	319	155
Archuleta	81	138	226	70
Baca	130	41	157	49
Bent	208	27	84	229
Boulder	1,621	432	589	229
Chaffee	839	289	121	53
Cheyenne	297	75	356	126
Clear Creek	553	162	126	30
Conejos	1,134	642	683	97
Costilla	405	51	936	55
Crowley	279	54	159	35
Custer	220	60	60	15
Delta	472	211	245	306
Denver	9,764	3,047	1,905	2,486
Dolores	80	27	8	14
Douglas	215	31	172	73
Eagle	342	142	131	55
Elbert	132	18	350	209
El Paso	1,655	437	1,940	2,588
Fremont	1,268	267	410	182
Garfield	840	201	325	189
Gilpin	258	107	103	49
Grand	112	43	91	93
Gunnison	568	149	65	30
Hinsdale	49	12	53	3
Huerfano	275	23	1,941	59
Jackson	35	4	39	15
Jefferson	804	178	715	304
Kiowa	189	26	188	77
Kit Carson	177	63	351	103
Lake	1,249	313	246	90
La Plata	879	756	171	74
Larimer	642	121	813	377

ABSTRACT OF VOTES CAST AT A PRIMARY ELECTION HELD ON TUESDAY, SEPTEMBER 10, A. D. 1912, FOR STATE TREASURER—Continued

COUNTIES	Michael A. Leddy (Dem.)	Marshall H. Van Fleet (Dem.)	James B. Dick (Rep.)	Oscar D. Cass (Rep.)
Las Animas	1,247	128	2,563	404
Lincoln	253	60	373	139
Logan	372	95	328	193
Mesa	508	246	529	831
Mineral	171	85	30	10
Moffat	94	27	120	44
Montezuma	481	312	49	23
Montrose	533	315	174	124
Morgan	265	62	647	346
Otero	930	231	304	116
Ouray	249	135	58	19
Park	183	58	67	28
Phillips	154	71	146	114
Pitkin	509	139	94	26
Prowers	243	73	193	36
Pueblo	3,811	1,190	1,073	449
Rio Blanco	123	33	66	26
Rio Grande	169	288	461	220
Routt	364	134	207	89
Saguache	217	190	324	79
San Juan	235	104	58	44
San Miguel	177	101	237	74
Sedgwick	94	28	232	74
Summit	329	90	49	16
Teller	1,991	805	190	120
Washington	227	94	270	164
Weld	1,251	274	1,129	420
Yuma	307	104	268	124
Total	42,194	14,063	24,406	12,951
Scattering, 3.				
Leddy over Van Fleet.....			28,131	
Dick over Cass			11,455	

ABSTRACT OF VOTES CAST AT A PRIMARY ELECTION HELD ON TUES-
DAY, SEPTEMBER 10, A. D. 1912, FOR ATTORNEY GENERAL

COUNTIES	Fred Farrar (Dem.)	Harry L. Lubers (Dem.)	William B. Gobin (Rep.)	Benjamin Griffith (Rep.)
Adams	625	207	71	98
Arapahoe	398	339	222	265
Archuleta	156	57	156	143
Baca	94	79	135	72
Bent	43	249	98	172
Boulder	1,498	463	405	413
Chaffee	531	542	85	95
Cheyenne	166	107	189	283
Clear Creek	405	250	102	51
Conejos	759	841	664	108
Costilla	100	49	848	125
Crowley	160	163	129	75
Custer	140	119	45	32
Delta	435	204	154	447
Denver	6,522	4,993	1,537	2,695
Dolores	65	33	7	18
Douglas	174	66	116	129
Eagle	258	205	97	100
Elbert	98	46	170	378
El Paso	1,101	801	1,325	3,476
Fremont	882	539	252	379
Garfield	611	365	231	279
Gilpin	201	142	78	81
Grand	108	35	64	125
Gunnison	404	252	52	53
Hinsdale	36	21	47	10
Huerfano	243	68	1,768	157
Jackson	33	5	24	31
Jefferson	618	322	234	784
Kiowa	47	174	121	138
Kit Carson	158	86	244	207
Lake	790	645	114	230
La Plata	951	573	113	133
Larimer	710	86	434	804
Las Animas	527	803	2,215	743

ABSTRACT OF VOTES CAST AT A PRIMARY ELECTION HELD ON TUESDAY, SEPTEMBER 10, A. D. 1912, FOR ATTORNEY GENERAL—Continued

COUNTIES	Fred Farrar (Dem.)	Harry L. Lubers (Dem.)	William B. Gobin (Rep.)	Benjamin Griffith (Rep.)
Lincoln	193	111	237	283
Logan	321	105	190	345
Mesa	334	333	233	1,383
Mineral	103	167	21	18
Moffat	85	41	91	76
Montezuma	474	269	23	56
Montrose	567	244	88	237
Morgan	229	86	405	572
Otero	675	508	304	147
Ouray	213	156	39	46
Park	161	69	44	50
Phillips	154	68	106	161
Pitkin	424	181	74	44
Prowers	141	185	169	58
Pueblo	2,109	2,585	849	721
Rio Blanco	95	55	44	48
Rio Grande	317	104	297	389
Routt	335	125	133	161
Saguache	251	115	263	147
San Juan	184	114	33	68
San Miguel	160	94	151	169
Sedgwick	80	33	142	171
Summit	244	154	28	45
Teller	1,505	1,053	108	208
Washington	243	78	186	234
Weld	1,209	281	649	934
Yuma	240	149	184	214
Total	31,143	21,352	17,637	20,419
Farrar over Lubers.....			9,791	
Griffith over Gobin.....			2,782	

ABSTRACT OF VOTES CAST AT A PRIMARY ELECTION HELD ON TUESDAY, SEPTEMBER 10, A. D. 1912. FOR SUPERINTENDENT OF PUBLIC INSTRUCTION

COUNTIES	Fospha A. Pulford	Marie V. Donahue (Dem.)	Mary C. C. Bradford (Dem.)	Inez Johnson Lewis (Dem.)	Helen M. Wixson (Rep.)
Adams	159	152	501	188	181
Arapahoe	61	131	401	253	550
Archuleta	161	18	22	27	275
Baca	38	45	40	50	199
Bent	36	49	70	71	253
Boulder	283	269	898	673	818
Chaffee	154	258	506	221	170
Cheyenne	42	93	53	96	490
Clear Creek	89	212	248	165	152
Conejos	898	244	389	152	748
Costilla	70	17	31	36	993
Crowley	50	110	64	69	206
Custer	56	147	71	27	71
Delta	127	133	253	183	520
Denver	857	2,465	4,792	4,511	4,018
Dolores	53	10	30	13	21
Douglas	23	42	44	148	258
Eagle	113	204	121	80	196
Elbert	33	40	28	54	534
El Paso	114	355	174	1,534	3,855
Fremont	199	393	601	361	569
Garfield	157	264	431	186	512
Gilpin	43	93	113	127	153
Grand	21	37	54	39	184
Gunnison	131	178	206	227	103
Hinsdale	17	12	23	10	52
Huerfano	121	65	66	70	1,790
Jackson	15	5	12	9	55
Jefferson	250	126	340	264	990
Kiowa	73	92	22	26	259
Kit Carson	66	70	51	60	468
Lake	142	856	318	212	338
La Plata	1,603	136	149	112	233
Larimer	111	197	264	202	1,260

ABSTRACT OF VOTES CAST AT A PRIMARY ELECTION HELD ON TUESDAY, SEPTEMBER 10, A. D. 1912, FOR SUPERINTENDENT OF PUBLIC INSTRUCTION—Continued

COUNTIES	Rosepha A. Pulford	Marie V. Donahue (Dem.)	Mary C. C. Bradford (Dem.)	Inez Johnson Lewis (Dem.)	Helen M. Wixson (Rep.)
Las Animas	224	408	506	224	2,899
Lincoln	50	69	65	131	528
Logan	49	104	109	199	509
Mesa	138	297	216	115	1,341
Mineral	31	100	84	34	36
Moffat	31	26	51	13	159
Montezuma	429	94	157	108	78
Montrose	203	246	243	180	303
Morgan	50	53	85	139	986
Otero	138	293	224	544	413
Ouray	75	88	130	86	79
Park	40	59	66	69	95
Phillips	41	41	30	132	256
Pitkin	85	232	213	127	110
Powers	38	70	84	117	221
Pueblo	731	1,695	1,395	1,080	1,398
Rio Blanco	35	25	59	46	92
Rio Grande	153	100	132	75	684
Routt	71	156	151	114	297
Saguache	68	151	106	64	407
San Juan	201	75	35	28	95
San Miguel	78	65	75	46	303
Sedgwick	25	20	22	53	309
Summit	56	153	105	104	64
Teller	222	1,704	637	659	309
Washington	80	63	89	90	438
Weld	252	290	514	510	1,552
Yuma	91	92	131	99	398
Total	10,052	14,212	17,100	15,642	35,833

Scattering, 11 candidates. Total, 20 votes.

Bradford over Lewis..... 1,458

ABSTRACT OF VOTES CAST AT A PRIMARY ELECTION HELD ON TUESDAY, SEPTEMBER 10, A. D. 1912, FOR REGENTS UNIVERSITY OF COLORADO

COUNTIES	James E. Raean (Dem.)	William H. Bryant (Dem.)	George D. Statler (Rep.)	O. J. Pfeiffer (Rep.)	Samuel L. Hallet (Dem.)	Charles R. Dudley (Rep.)
	For the Full Term				To Fill Vacancy	
Adams	624	714	136	104	808	155
Arapahoe	826	883	516	435	870	515
Archuleta	173	115	247	168	178	260
Baca	111	138	186	145	153	198
Bent	151	173	180	180	197	218
Boulder	1,407	1,582	677	601	1,711	767
Chaffee	658	826	134	92	962	154
Cheyenne	217	182	391	322	229	434
Clear Creek ..	420	518	130	77	520	140
Conejos	1,357	1,231	717	480	1,434	746
Costilla	113	79	933	758	130	949
Crowley	183	171	139	116	229	176
Custer	147	195	59	40	216	63
Delta	436	475	318	409	553	449
Denver	7,738	9,859	3,054	3,229	10,450	3,774
Dolores	45	75	16	14	81	17
Douglas	200	202	203	161	215	217
Eagle	286	336	162	115	414	181
Elbert	96	115	433	343	134	462
El Paso.....	1,434	1,504	2,862	3,514	1,726	3,579
Fremont	1,003	1,089	453	401	1,149	534
Garfield	714	704	409	312	893	461
Gilpin	224	267	117	98	300	134
Grand	89	115	138	121	122	162
Gunnison	434	442	74	58	550	85
Hinsdale	47	43	47	30	51	52
Huerfano	250	248	1,859	721	319	1,854
Jackson	35	27	47	41	34	48
Jefferson	608	745	823	792	807	910
Kiowa	194	178	208	171	181	238
Kit Carson ...	184	196	385	285	219	396
Lake	709	743	210	114	1,268	315
La Plata.....	1,092	1,094	173	152	1,293	213

ABSTRACT OF VOTES CAST AT A PRIMARY ELECTION HELD ON TUESDAY, SEPTEMBER 10, A. D. 1912, FOR REGENTS UNIVERSITY OF COLORADO—Continued

COUNTIES	James B. Ragan (Dem.)	William H. Bryant (Dem.)	George D. Statler (Rep.)	O. J. Pfeiffer (Rep.)	Samuel L. Hallet (Dem.)	Charles R. Dudley (Rep.)
	For the Full Term				To Fill	Vacancy
Larimer	544	553	966	799	664	1,085
Las Animas..	1,132	1,195	2,603	2,135	1,233	2,732
Lincoln	225	232	419	341	272	470
Logan	341	314	375	299	375	466
Mesa	505	527	682	1,015	609	1,142
Mineral	160	195	31	22	190	34
Moffat	92	89	135	108	108	152
Montezuma ..	432	577	53	46	644	63
Montrose	573	632	209	194	699	266
Morgan	225	250	761	632	298	865
Otero	775	862	337	271	961	370
Ouray	248	273	61	44	288	67
Park	137	168	81	45	193	83
Phillips	153	169	217	173	191	243
Pitkin	363	463	104	76	616	100
Prowers	203	233	194	137	265	215
Pueblo	3,420	3,551	1,235	978	4,219	1,393
Rio Blanco....	99	108	74	56	128	83
Rio Grande...	286	329	520	409	345	610
Routt	312	346	244	224	411	251
Saguache	264	261	361	284	321	376
San Juan.....	213	213	72	68	259	85
San Miguel...	165	189	264	163	213	282
Sedgwick	91	87	247	184	99	284
Summit	273	291	49	42	325	58
Teller	1,974	2,015	238	222	2,166	275
Washington...	212	231	313	238	294	415
Weld	1,068	1,220	1,462	1,039	1,322	1,417
Yuma	287	284	309	240	339	365
Total	36,977	41,207	29,052	24,783	46,453	33,124

Scattering, 25 candidates. Total, 43 votes.

Scattering, 20 candidates. Total, 23 votes.

ABSTRACT OF VOTES CAST AT A GENERAL ELECTION HELD ON TUESDAY, NOVEMBER 5, A. D. 1912, FOR JUDGE OF THE FIRST JUDICIAL DISTRICT

COUNTIES	Harry S. Class (Dem.)	Charles McCall (Rep.)	Jas. McD. Livesay (Non. P. E.)	Charles Sanders (Soc.)
Adams	1,995	682	50	6
Arapahoe	2,206	1,525	68	..
Clear Creek	1,062	723	115	..
Gilpin	942	499	186	..
Grand	519	385	20	..
Jefferson	3,207	1,599	145	..
Total	9,931	5,113	584	6
Majority for Class over McCall.....			4,818	

ABSTRACT OF VOTES CAST AT A GENERAL ELECTION HELD ON TUESDAY, NOVEMBER 5, A. D. 1912, FOR DISTRICT JUDGES OF THE SECOND JUDICIAL DISTRICT

City and County of Denver.	
George W. Allen, Republican, Democratic.....	31,193
Chas. C. Butler, Republican, Bull Moose.....	31,029
Thos. D. Cobby, Progressive, Bull Moose.....	20,441
John H. Dennison, Republican.....	29,728
H. H. Floaten, Socialist.....	2,974
Albert S. Frost, Progressive, Bull Moose, Citizens.....	22,042
J. W. Hess, Socialist.....	2,964
Henry V. Johnson, Democratic	22,761
T. M. Marshall, Socialist.....	2,952
Wm. Meyers, Socialist	2,928
Edward R. Morris, Democratic.....	21,938
John C. Murray, Progressive	19,478
John A. Perry, Democratic.....	26,021
James H. Teller, Republican, Democratic, Non-partisan Bar.....	35,293
Dureen J. H. Ward, Socialist.....	2,884
Greeley W. Whitford, Republican, Non-partisan Bar.....	11,454
Majority for Teller over Johnson.....	12,442
Majority for Allen over Johnson.....	8,432
Majority for Butler over Johnson.....	8,268
Majority for Denison over Johnson.....	6,967
Majority for Perry over Johnson.....	3,260

ABSTRACT OF VOTES CAST AT A GENERAL ELECTION HELD ON TUESDAY, NOVEMBER 5, A. D. 1912, FOR JUDGE OF THE THIRD JUDICIAL DISTRICT

COUNTIES	Henry Hunter (Rep.)	A. Watson McHendrie (Dem.)
Baca	400	606
Bent	598	1,281
Huerfano	2,893	1,502
Las Animas	4,794	4,694
Prowers	1,119	1,922
Total	9,804	10,005
Majority for McHendrie		201

ABSTRACT OF VOTES CAST AT A GENERAL ELECTION HELD ON TUESDAY, NOVEMBER 5, A. D. 1912, FOR JUDGES OF THE FOURTH JUDICIAL DISTRICT

COUNTIES	Henry C. Cassidy (Dem.)	S. A. Garth (Soc.)	Clarence M. Hawkins (Dem.)	J. E. Little (Prog. Rep.)	W. S. Morris (Rep. Prog.)
Cheyenne	481	164	471	625	641
Douglas	614	33	600	658	665
Elbert	750	126	734	1,098	1,088
El Paso	5,365	1,019	5,641	8,179	7,894
Kit Carson	772	224	754	1,198	1,196
Lincoln	792	94	782	1,249	1,235
Teller	2,948	827	2,930	1,943	2,026
Total	11,722	2,487	11,912	14,950	14,745

ABSTRACT OF VOTES CAST AT A GENERAL ELECTION HELD ON TUESDAY, NOVEMBER 5, A. D. 1912, FOR JUDGES OF THE FOURTH JUDICIAL DISTRICT

COUNTIES	J. W. Sheafor (Rep. Prog.)	Clyde L. Starrett (Dem.)	O. E. Collins (Rep.)	B. Carpenter	J. L. Bennett (Rep.)
Cheyenne	637	472
Douglas	661	605
Elbert	1,097	736
El Paso	7,977	5,758	4	4	4
Kit Carson	1,198	757
Lincoln	1,225	788
Teller	2,041	2,913
Total	14,836	12,029	4	4	4
Majority for Little over Starrett.....				2,921	
Majority for Sheafor over Starrett.....				2,807	
Majority for Morris over Starrett.....				2,716	

ABSTRACT OF VOTES CAST AT A GENERAL ELECTION HELD ON TUESDAY, NOVEMBER 5, A. D. 1912, FOR JUDGE OF THE FIFTH JUDICIAL DISTRICT

COUNTIES	Charles Cavender (Prog. Rep.)	James T. Hogan (Dem.)
Eagle	880	559
Lake	2,601	1,381
Summit	583	389
Total	4,064	2,329
Majority for Cavender.....	1,735	

ABSTRACT OF VOTES CAST AT A GENERAL ELECTION HELD ON TUESDAY, NOVEMBER 5, A. D. 1912, FOR JUDGE OF THE SIXTH JUDICIAL DISTRICT

COUNTIES	William N. Searcy (Dem.)	Charles A. Pike (Rep. Prog.)
Archuleta	791	558
Dolores	117	85
La Plata	1,720	1,546
Montezuma	1,069	619
San Juan	622	325
Total	4,319	3,133
Majority for Searcy	1,186	

ABSTRACT OF VOTES CAST AT A GENERAL ELECTION HELD ON TUESDAY, NOVEMBER 5, A. D. 1912, FOR JUDGE OF THE SEVENTH JUDICIAL DISTRICT

COUNTIES	Thomas J. Black (Dem.)	Sprigg Shackelford (Rep. Prog.)	J. Monroe Stewart (Soc.)
Delta	1,867	2,322	568
Gunnison	1,030	1,074	143
Hinsdale	150	173	31
Mesa	3,920	3,578	1,121
Montrose	2,044	1,193	407
Ouray	671	594	194
San Miguel	1,188	800	111
Total	9,870	9,734	2,575
Majority for Black		136	