

STATE OF COLORADO

# Abstract of Votes Cast

AT THE

## Primary Election

Held on the Tenth Day of September,  
A. D. 1912

AND AT THE

## General Election

Held on the Fifth Day of November,  
A. D. 1912

FOR

Presidential Electors, United States Senators,  
Congressmen, and State, Legislative  
and District Officers

ALSO THE

Proposed Constitutional Amendments  
Initiated and Referred Bills

COMPILED FROM OFFICIAL RETURNS

BY

**JAMES B. PEARCE**  
Secretary of State

1913



DENVER, COLORADO  
THE SMITH-BROOKS PRINTING CO., STATE PRINTERS  
1913

## ABSTRACT OF VOTES CAST

ABSTRACT OF VOTES CAST AT A PRIMARY ELECTION HELD ON TUESDAY, SEPTEMBER 10, A. D. 1912, FOR REPRESENTATIVE IN THE NINETEENTH GENERAL ASSEMBLY, FROM THE COUNTY OF LARIMER

COUNTY	J. M. Cunningham	E. T. Puleston (Dem.)	W. R. Stever	M. K. Aylesworth (Rep.)
Larimer .....	1,318	689	1	3

ABSTRACT OF VOTES CAST AT A PRIMARY ELECTION HELD ON TUESDAY, SEPTEMBER 10, A. D. 1912, FOR REPRESENTATIVE IN THE NINETEENTH GENERAL ASSEMBLY, FROM THE COUNTY OF MESA

COUNTY	Avery C. Newton (Rep.)	W. M. Porter (Dem.)	Seth Teasdale (Rep.)
Mesa .....	889	740	577
Newton over Teasdale.....		312	

ABSTRACT OF VOTES CAST AT A PRIMARY ELECTION HELD ON TUESDAY, SEPTEMBER 10, A. D. 1912, FOR REPRESENTATIVES IN THE NINETEENTH GENERAL ASSEMBLY, FROM THE COUNTY OF LAKE

COUNTY	John Gibbons (Dem.)	Dennis J. O'Neill (Dem.)	Frank E. Purple (Rep.)	Peter E. Turnbull (Dem.)
Lake .....	990	888	329	1,034
Turnbull over O'Neill.....			146	
Gibbons over O'Neill.....			102	

ABSTRACT OF VOTES CAST AT A PRIMARY ELECTION HELD ON TUESDAY, SEPTEMBER 10, A. D. 1912, FOR REPRESENTATIVE IN THE NINETEENTH GENERAL ASSEMBLY, FROM THE COUNTY OF MONTROSE

COUNTY	Wm. J. Horton (Dem.)	C. M. Ryan (Rep.)	O. C. Skinner (Dem.)
Montrose .....	441	296	716
Skinner over Horton.....			275

ABSTRACT OF VOTES CAST AT A PRIMARY ELECTION HELD ON TUESDAY, SEPTEMBER 10, A. D. 1912, FOR REPRESENTATIVE IN THE NINETEENTH GENERAL ASSEMBLY, FROM THE COUNTIES OF CROWLEY AND OTERO

COUNTIES	William Edgar (Rep.)	Albert F. Enyeart (Dem.)	R. L. Martin (Rep.)	Orlando W. West (Dem.)
Crowley .....	187	214	1	148
Otero .....	360	335	.....	920
Total .....	547	549	1	1,068
West over Enyeart.....			519	

ABSTRACT OF VOTES CAST AT A PRIMARY ELECTION HELD ON TUESDAY, SEPTEMBER 10, A. D. 1912, FOR REPRESENTATIVES IN THE NINETEENTH GENERAL ASSEMBLY, FROM THE COUNTY OF LAS ANIMAS

COUNTY	W. W. Boyle (Rep.)	John Guynn (Dem.)	John Mayer (Rep.)	Foustin Mascarenas (Dem.)	Juan A. Torres (Dem.)
Las Animas .....	2,692	1,162	2,050	1,029	1,195
Scattering, one (1).					
Guynn over Mascarenas.....					133
Torres over Mascarenas.....					166

ABSTRACT OF VOTES CAST AT A PRIMARY ELECTION HELD ON TUESDAY, SEPTEMBER 10, A. D. 1912, FOR REPRESENTATIVE IN THE NINETEENTH GENERAL ASSEMBLY, FROM THE COUNTY OF OURAY

COUNTY	B. H. Du Praw (Dem.)	R. K. Humphrey (Rep.)	W. W. Rowan	C. M. Stanwood (Rep.)
Ouray .....	265	70	269	2
Rowan over Du Praw.....			4	

ABSTRACT OF VOTES CAST AT A PRIMARY ELECTION HELD ON TUESDAY, SEPTEMBER 10, A. D. 1912, FOR REPRESENTATIVE IN THE NINETEENTH GENERAL ASSEMBLY, FROM THE COUNTY OF PARK

COUNTY	S. W. Packer (Dem.)	Geo. H. Slater (Rep.)	W. J. Wallace (Dem.)
Park .....	145	103	138
Packer over Wallace.....			7

ABSTRACT OF VOTES CAST AT A PRIMARY ELECTION HELD ON TUESDAY, SEPTEMBER 10, A. D. 1912, FOR REPRESENTATIVE IN THE NINETEENTH GENERAL ASSEMBLY, FROM THE COUNTY OF PITKIN

COUNTY	Charles Dalley, Sr. (Dem.)	C. L. Gilbert (Rep.)	C. W. Judkins (Dem.)	Roy C. Parr (Dem.)
Pitkin .....	342	111	151	306
Dailey over Parr.....				36

ABSTRACT OF VOTES CAST AT A PRIMARY ELECTION HELD ON TUESDAY, SEPTEMBER 10, A. D. 1912, FOR REPRESENTATIVE IN THE NINETEENTH GENERAL ASSEMBLY, FROM THE COUNTY OF SAGUACHE

COUNTY	Mrs. Harriett Colvin (Dem.)	Geo. Curtis (Rep.)	W. E. Gardner (Rep.)	J. M. Lawrence (Dem.)	M. Ed. Werner (Dem.)
Saguache .....	2	1	421	145	284
Werner over Lawrence.....					139

ABSTRACT OF VOTES CAST AT A PRIMARY ELECTION HELD ON TUESDAY, SEPTEMBER 10, A. D. 1912, FOR REPRESENTATIVE IN THE NINETEENTH GENERAL ASSEMBLY, FROM THE COUNTY OF SAN JUAN

COUNTY	W. Z. Kinney (Rep.)	J. H. Slattery (Dem.)
San Juan .....	101	273

ABSTRACT OF VOTES CAST AT A PRIMARY ELECTION HELD ON TUESDAY, SEPTEMBER 10, A. D. 1912, FOR REPRESENTATIVE IN THE NINETEENTH GENERAL ASSEMBLY, FROM THE COUNTY OF SAN MIGUEL

COUNTY	Fred Anderson (Rep.)	Albert T. Woods (Dem.)
San Miguel .....	300	234

ABSTRACT OF VOTES CAST AT A PRIMARY ELECTION HELD ON TUESDAY, SEPTEMBER 10, A. D. 1912, FOR REPRESENTATIVES IN THE NINETEENTH GENERAL ASSEMBLY, FROM THE COUNTY OF PUEBLO

Geo. M. Ashton, Democrat.....	2,829
Patrick T. McDonald, Democrat.....	2,490
Chas. J. Leftwich, Democrat.....	2,426
Sterling Cawfield, Democrat.....	2,240
Hallet Gallup, Democrat.....	2,457
Etta Corrick, Democrat.....	1,070
Marvin Dameron, Democrat.....	1,608
James M. Sare, Democrat.....	1,451
Frank M. Gray, Democrat.....	1,983
M. M. Meredith, Republican.....	1,268
Jas. P. Harbauer, Republican.....	1,201
Geo. Chappelle, Republican.....	1,185
R. M. McClintock, Republican.....	7

Scattering, eleven candidates. Total, 13 votes.

Ashton over Cawfield.....	589
McDonald over Cawfield.....	250
Leftwich over Cawfield.....	186
Gallup over Cawfield.....	217

ABSTRACT OF VOTES CAST AT A PRIMARY ELECTION HELD ON TUESDAY, SEPTEMBER 10, A. D. 1912, FOR REPRESENTATIVE IN THE NINETEENTH GENERAL ASSEMBLY, FROM THE COUNTIES OF ROUTT, RIO BLANCO AND MOFFAT

COUNTIES	Albert A. Mann (Dem.)	Robert E. Norvell (Dem.)	Jas. H. Templeton (Rep.)
Moffat .....	43	91	156
Rio Blanco .....	61	119	88
Routt .....	284	277	293
Total .....	388	487	537
Norvell over Mann.....		99	

ABSTRACT OF VOTES CAST AT A PRIMARY ELECTION HELD ON TUESDAY, SEPTEMBER 10, A. D. 1912, FOR REPRESENTATIVE IN THE NINETEENTH GENERAL ASSEMBLY, FROM THE COUNTIES OF PROWERS AND BACA

COUNTIES	W. F. Ferguson (Dem.)	John S. Hasty (Rep.)	J. B. Traxler (Dem.)
Baca .....	52	214	137
Prowers .....	123	223	203
Total .....	175	437	340
Traxler over Ferguson.....		165	

ABSTRACT OF VOTES CAST AT A PRIMARY ELECTION HELD ON TUESDAY, SEPTEMBER 10, A. D. 1912, FOR REPRESENTATIVE IN THE NINETEENTH GENERAL ASSEMBLY, FROM THE COUNTIES OF GRAND, JACKSON AND SUMMIT

COUNTIES	Sewiers Fletcher (Dem.)	O. K. Gaymon (Rep.)
Grand .....	133	168
Jackson .....	26	48
Summit .....	365	56
Total .....	524	282

ABSTRACT OF VOTES CAST AT A PRIMARY ELECTION HELD ON TUESDAY, SEPTEMBER 10, A. D. 1912, FOR REPRESENTATIVE IN THE NINETEENTH GENERAL ASSEMBLY, FROM THE COUNTIES OF KIT CARSON, LINCOLN, CHEYENNE, YUMA AND PHILLIPS

COUNTIES	Frederick W. Buck (Rep.)	F. B. Godsmund (Rep.)	Wm. D. McGinnis (Rep.)	F. F. Vogel (Rep.)	Louis Vogt (Dem.)
Kit Carson .....	265	252	54	24	160
Lincoln .....	201	107	87	190	174
Cheyenne .....	268	111	109	56	125
Yuma .....	112	58	269	26	163
Phillips .....	95	19	133	23	109
<b>Total</b> .....	<b>941</b>	<b>549</b>	<b>652</b>	<b>319</b>	<b>731</b>
Buck over McGinnis.....				289	
Vogt over White.....					71

ABSTRACT OF VOTES CAST AT A PRIMARY ELECTION HELD ON TUESDAY, SEPTEMBER 10, A. D. 1912, FOR REPRESENTATIVE IN THE NINETEENTH GENERAL ASSEMBLY, FROM THE COUNTIES OF KIT CARSON, LINCOLN, CHEYENNE, YUMA AND PHILLIPS

COUNTIES	Robert N. White (Dem.)
Kit Carson .....	94
Lincoln .....	103
Cheyenne .....	126
Yuma .....	220
Phillips .....	120
<b>Total</b> .....	<b>663</b>

ABSTRACT OF VOTES CAST AT A PRIMARY ELECTION HELD ON TUESDAY, SEPTEMBER 10, A. D. 1912, FOR REPRESENTATIVE IN THE NINETEENTH GENERAL ASSEMBLY, FROM THE COUNTIES OF MORGAN, LOGAN, SEDGWICK AND WASHINGTON

COUNTIES	Clarence O. Finch (Dem.)	James E. Jewell (Dem.)	Cuthbert F. Parker (Rep.)
Morgan .....	202	115	893
Logan .....	184	243	482
Sedgwick .....	92	20	348
Washington .....	215	82	388
Total .....	683	460	2,111
Finch over Jewell.....		223	

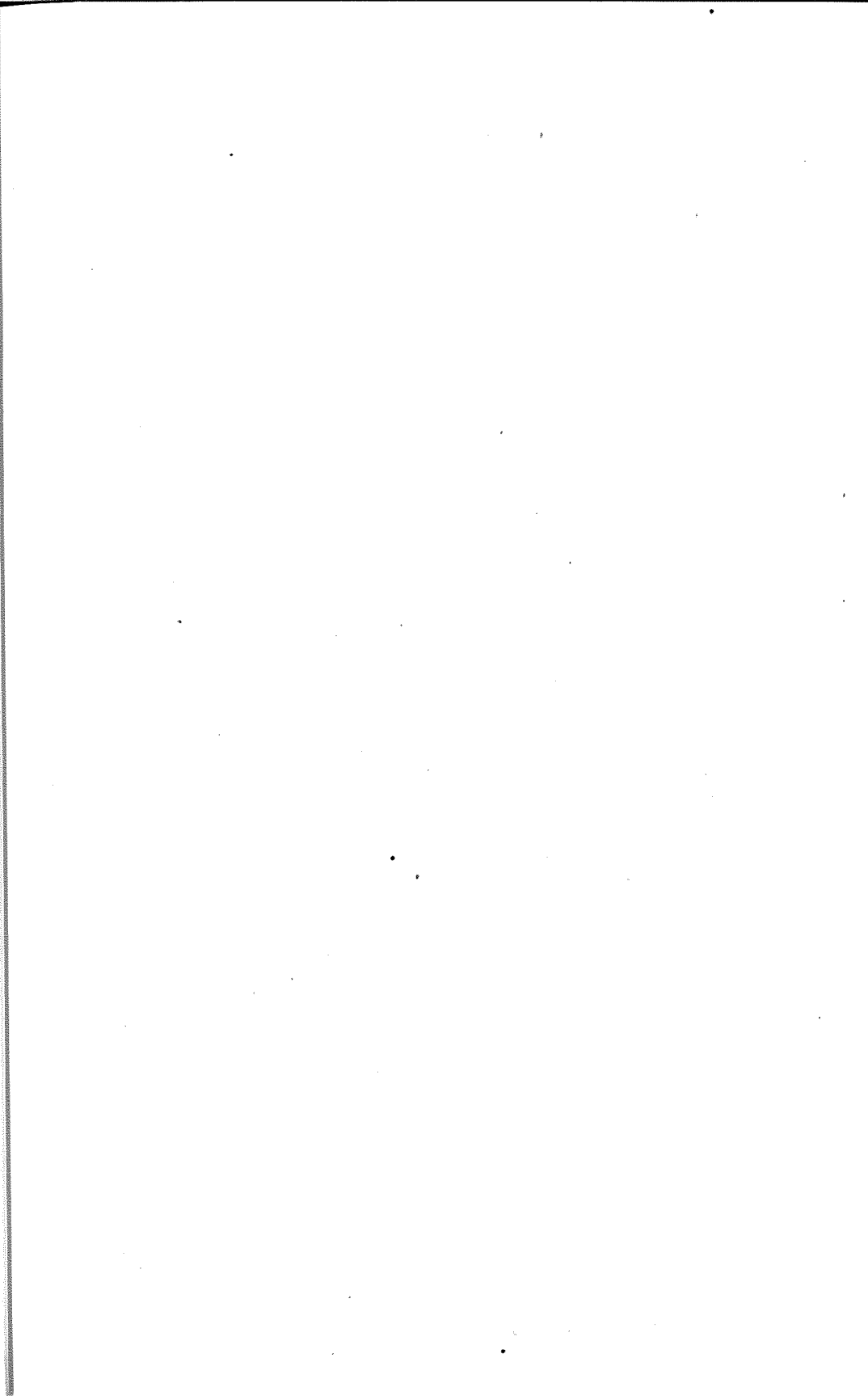
ABSTRACT OF VOTES CAST AT A PRIMARY ELECTION HELD ON TUESDAY, SEPTEMBER 10, A. D. 1912, FOR REPRESENTATIVES IN THE NINETEENTH GENERAL ASSEMBLY, FROM THE COUNTY OF WELD

U. E. Madden, Republican.....	1,327
T. A. Nixon, Republican.....	1,295
R. M. Haythorn, Republican.....	7
Chas. T. Philp, Democrat.....	964
John A. Hicks, Democrat.....	880
O. E. Frink, Democrat.....	818
Scattering, four candidates. Total, 6 votes.	
Philp over Frink.....	146
Hicks over Frink.....	62

ABSTRACT OF VOTES CAST AT A PRIMARY ELECTION HELD ON TUESDAY, SEPTEMBER 10, A. D. 1912, FOR REPRESENTATIVE IN THE NINETEENTH GENERAL ASSEMBLY, FROM THE COUNTY OF RIO GRANDE

COUNTY	George W. Gates (Dem.)	Chas. Trueblood (Rep.)
Rio Grande .....	435	728





ABSTRACT OF VOTES CAST AT A PRIMARY ELECTION HELD ON TUES-  
DAY, SEPTEMBER 10, A. D. 1912, FOR UNITED STATES SENATOR-  
LONG TERM (SIX YEARS)

COUNTIES	Alva Adams (Dem.)	John F. Shaffroth (Dem.)	Thomas J. O'Donnell (Dem.)	Clyde C. Dawson (Rep.)	Merle D. Vincent (Rep.)
Adams .....	176	860	118	121	66
Arapahoe .....	264	598	172	361	166
Archuleta .....	133	61	69	216	99
Baca .....	63	104	32	171	38
Bent .....	149	91	47	123	177
Boulder .....	531	1,324	737	593	298
Chaffee .....	491	443	423	145	55
Cheyenne .....	46	204	57	324	159
Clear Creek .....	213	435	250	127	34
Conejos .....	1,693	245	80	758	63
Costilla .....	124	57	4	952	71
Crowley .....	217	108	45	132	77
Custer .....	135	89	124	82	8
Delta .....	172	371	220	159	499
Denver .....	3,794	8,601	2,485	2,447	2,040
Dolores .....	16	95	14	10	14
Douglas .....	80	167	29	179	72
Eagle .....	156	275	176	136	69
Elbert .....	40	71	58	361	203
El Paso .....	925	1,028	400	1,842	3,235
Fremont .....	779	688	444	552	125
Garfield .....	248	774	188	348	184
Gilpin .....	64	181	219	97	65
Grand .....	26	76	87	110	93
Gunnison .....	135	463	336	68	51
Hinsdale .....	10	48	16	48	14
Huerfano .....	190	82	128	1,923	85
Jackson .....	12	29	12	49	11
Jefferson .....	233	745	167	731	328
Kiowa .....	165	46	27	165	109
Kit Carson .....	80	131	70	350	125
Lake .....	302	634	926	247	121
La Plata .....	515	500	900	196	74
Larimer .....	197	428	279	791	563

ABSTRACT OF VOTES CAST AT A PRIMARY ELECTION HELD ON TUESDAY, SEPTEMBER 10, A. D. 1912, FOR UNITED STATES SENATOR—LONG TERM (SIX YEARS)—Continued

COUNTIES	Alva Adams (Dem.)	John F. Shafroth (Dem.)	Thomas J. O'Donnell (Dem.)	Clyde C. Dawson (Rep.)	Merle D. Vincent (Rep.)
Las Animas .....	907	431	98	2,500	499
Lincoln .....	74	202	82	367	173
Logan .....	85	363	88	328	246
Mesa .....	150	467	291	418	1,221
Mineral .....	142	143	44	35	11
Moffat .....	74	48	18	139	31
Montezuma .....	200	533	234	56	40
Montrose .....	182	608	239	141	190
Morgan .....	60	240	66	582	491
Otero .....	486	712	214	304	137
Ouray .....	87	227	208	57	27
Park .....	29	138	108	87	14
Phillips .....	58	132	81	199	78
Pitkin .....	151	385	238	103	25
Prowers .....	92	193	81	190	46
Pueblo .....	3,941	899	1,145	993	649
Rio Blanco .....	70	86	44	78	19
Rio Grande .....	241	216	69	467	281
Routt .....	122	286	182	213	99
Saguache .....	179	136	123	349	89
San Juan .....	92	153	160	61	49
San Miguel .....	63	130	111	228	92
Sedgwick .....	34	77	23	234	83
Summit .....	103	174	224	41	23
Teller .....	945	1,920	486	207	128
Washington .....	87	213	71	271	176
Weld .....	264	1,173	283	1,092	588
Yuma .....	118	225	146	257	159
Total .....	21,410	30,562	14,496	24,911	15,055

Scattering, 35 candidates. Total, 54 votes.

Shafroth over Adams..... 9,152

Dawson over Vincent..... 9,856

ABSTRACT OF VOTES CAST AT A PRIMARY ELECTION HELD ON TUESDAY, SEPTEMBER 10, A. D. 1912, FOR UNITED STATES SENATOR—SHORT TERM (TWO YEARS)

COUNTIES	Charles S. Thomas (Dem.)	Charles W. Waterman (Rep.)	James H. Brown (Rep.)
Adams .....	910	80	97
Arapahoe .....	1,002	309	224
Archuleta .....	210	154	166
Baca .....	172	151	61
Bent .....	258	124	164
Boulder .....	2,005	556	298
Chaffee .....	1,103	90	92
Cheyenne .....	264	270	212
Clear Creek .....	619	114	45
Conejos .....	1,681	708	110
Costilla .....	157	923	78
Crowley .....	327	156	63
Custer .....	271	57	20
Delta .....	684	253	279
Denver .....	11,944	2,044	2,580
Dolores .....	96	11	14
Douglas .....	252	147	102
Eagle .....	477	115	86
Elbert .....	151	282	276
El Paso .....	2,086	2,089	2,613
Fremont .....	1,398	409	198
Garfield .....	1,013	294	228
Gilpin .....	348	92	67
Grand .....	157	111	86
Gunnison .....	684	66	48
Hinsdale .....	63	51	12
Huerfano .....	362	1,856	140
Jackson .....	35	38	13
Jefferson .....	1,000	676	373
Kiowa .....	198	146	125
Kit Carson .....	246	329	139
Lake .....	1,453	191	167
La Plata .....	1,466	164	95
Larimer .....	734	730	561

ABSTRACT OF VOTES CAST AT A PRIMARY ELECTION HELD ON TUESDAY, SEPTEMBER 10, A. D. 1912, FOR UNITED STATES SENATOR—SHORT TERM (TWO YEARS)—Continued

COUNTIES	Charles S. Thomas (Dem.)	Charles W. Waterman (Rep.)	James H. Brown (Rep.)
Las Animas .....	1,343	2,294	718
Lincoln .....	322	334	198
Logan .....	484	303	256
Mesa .....	810	400	1,032
Míneral .....	260	34	10
Moffat .....	121	117	48
Montezuma .....	756	48	35
Montrose .....	861	140	157
Morgan .....	326	578	418
Otero .....	1,154	294	149
Ouray .....	382	51	31
Park .....	256	71	25
Phillips .....	222	190	77
Pitkin .....	599	92	32
Prowers .....	295	190	45
Pueblo .....	4,486	942	574
Río Blanco .....	161	67	30
Río Grande .....	440	426	277
Routt .....	486	190	119
Saguache .....	375	301	127
San Juan .....	307	64	46
San Miguel .....	255	206	114
Sedgwick .....	122	227	92
Summit .....	405	41	23
Teller .....	2,641	161	161
Washington .....	346	262	191
Weld .....	1,503	957	663
Yuma .....	389	242	158
<b>Total .....</b>	<b>53,933</b>	<b>22,985</b>	<b>15,638</b>

Scattering, 28 candidates. Total, 66 votes.

Waterman over Brown..... 7,347

Eagle	516	123	162	97	110	41	33	32	59	40
Elbert	127	47	74	33	298	148	89	129	181	137
El Paso	1,607	920	667	529	2,654	903	241	311	3,109	2,001
Fremont	1,384	624	536	329	350	228	94	120	161	106
Garfield	1,136	306	338	189	297	182	81	85	142	107
Gilpin	294	126	147	74	92	52	22	48	37	20
Grand	139	52	49	28	93	44	26	53	52	36
Gunnison	711	252	203	111	70	42	20	19	27	14
Hinsdale	68	37	9	16	35	44	5	17	2	4
Huerfano	318	138	113	46	1,854	1,653	87	63	63	45
Jackson	39	15	13	3	35	17	14	22	6	11
Jefferson	862	525	256	172	250	114	174	543	596	171
Kiowa	218	22	153	15	161	91	23	65	59	71
Kit Carson	241	86	54	72	277	201	61	82	94	89
Lake	1,173	619	716	329	209	92	72	90	106	60
La Plata	1,389	475	571	332	142	91	52	57	57	34
Larimer	622	387	193	161	503	377	263	272	223	256
Las Animas	1,238	867	327	173	2,349	1,976	347	363	333	295
Lincoln	301	135	65	66	270	152	129	122	123	120
Logan	377	166	242	71	233	167	102	114	156	107
Mesa	771	162	377	83	374	215	120	149	896	629
Mineral	247	71	93	40	33	19	3	5	4	3
Moffat	131	44	42	15	76	94	46	31	38	22
Montezuma	682	275	186	212	35	25	13	16	17	12

ABSTRACT OF VOTES CAST AT A PRIMARY ELECTION HELD ON TUESDAY, SEPTEMBER 10, A. D. 1912, FOR CONGRESSMEN AT LARGE

COUNTIES	Edward T. Taylor (Dem.)	William L. Clayton (Dem.)	Edward Keating (Dem.)	Katherine Williamson (Dem.)	Samuel H. Kinsley (Rep.)	Jesse J. Laton (Rep.)	Albinus A. Johnson (Rep.)	James P. Miller (Rep.)	Clarence P. Dodge (Rep.)	Louis J. Stark (Rep.)
Adams .....	789	449	339	188	100	47	31	65	51	32
Arapahoe .....	668	310	368	171	283	178	98	95	127	88
Archuleta .....	203	71	89	37	186	131	55	59	42	36
Baca .....	169	92	35	26	163	84	32	55	21	31
Bent .....	210	71	133	31	122	84	38	61	88	69
Boulder .....	1,633	699	896	581	180	220	382	509	166	100
Chaffee .....	930	403	342	311	100	58	36	41	48	29
Cheyenne .....	256	132	64	60	258	158	91	109	107	105
Clear Creek .....	580	231	340	144	103	39	52	28	43	15
Conejos .....	1,452	528	844	277	683	515	82	148	28	34
Costilla .....	134	61	21	32	914	279	54	565	37	35
Crowley .....	282	86	179	44	126	100	20	40	27	35
Custer .....	247	67	97	51	56	26	11	11	9	9
Delta .....	634	249	199	128	227	147	51	61	275	191
Denver .....	8,928	5,477	6,617	3,592	1,732	1,342	893	600	1,869	1,769
Dolores .....	95	31	25	26	5	3	3	5	13	14
Douglas .....	220	111	105	35	149	102	42	59	43	51

Teller .....	2,128	982	1,477	666	181	105	55	64	119	75
Washington .....	268	125	66	60	225	104	50	66	105	112
Weld .....	1,201	1,237	333	234	902	513	322	454	405	306
Yuma .....	350	179	91	76	220	120	49	89	88	97
<b>Total</b> .....	<b>45,754</b>	<b>21,751</b>	<b>24,341</b>	<b>12,100</b>	<b>21,428</b>	<b>13,811</b>	<b>5,787</b>	<b>7,275</b>	<b>11,813</b>	<b>8,888</b>

Scattering, 5 candidates. Total, 8 votes

Taylor over Clayton.....	24,003
Keating over Clayton.....	2,590
Kinsley over Dodge.....	9,615
Laton over Dodge.....	1,998



ABSTRACT OF VOTES CAST AT A PRIMARY ELECTION HELD ON TUESDAY, SEPTEMBER 10, A. D. 1912, FOR CONGRESSMEN  
AT LARGE—Continued

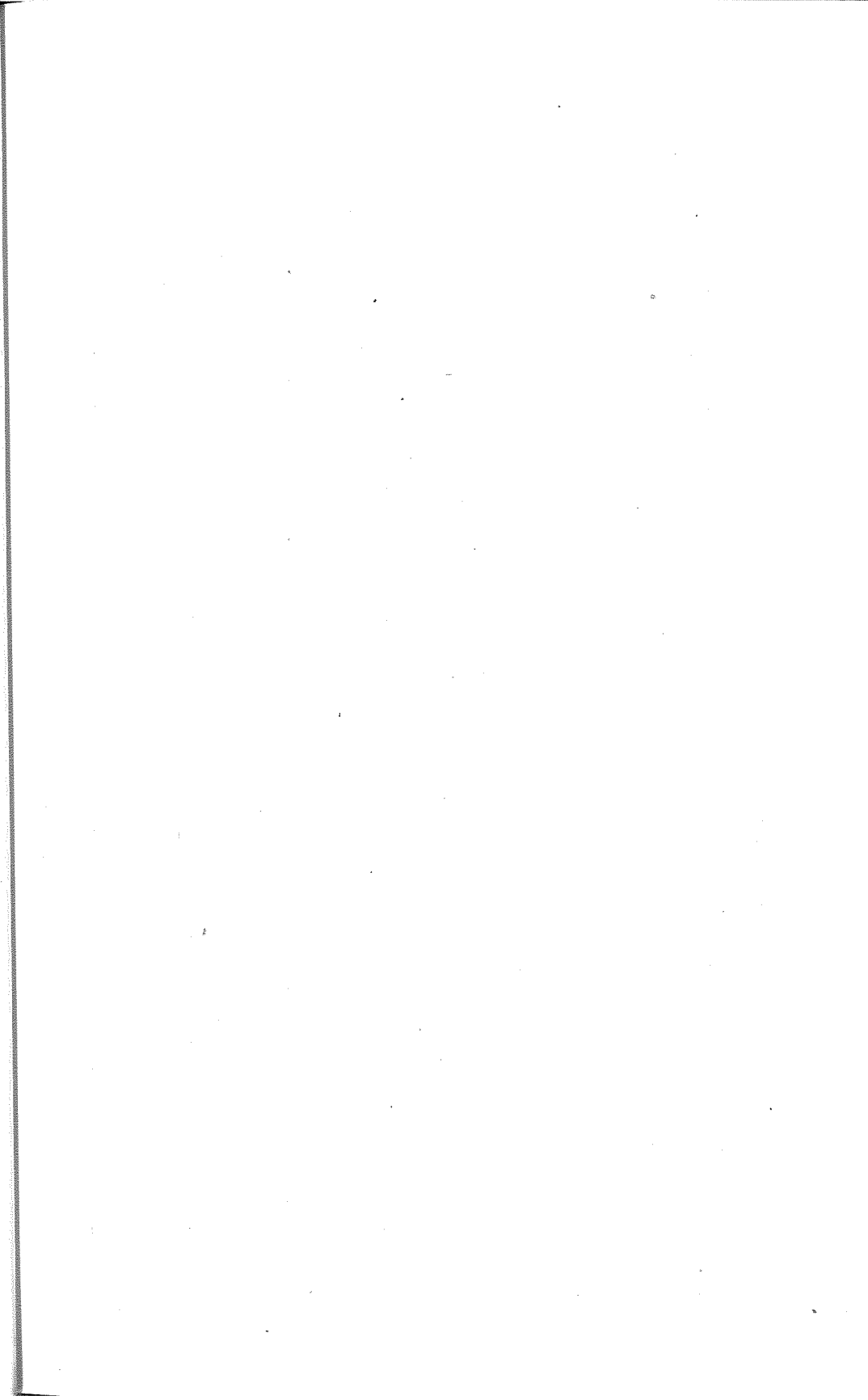
COUNTIES	Edward T. Taylor (Dem.)	William L. Clayton (Dem.)	Edward Keating (Dem.)	Katherine Williamson (Dem.)	Samuel H. Kinsley (Rep.)	Jesse J. Latton (Rep.)	Albinus A. Johnson (Rep.)	James P. Miller (Rep.)	Clarence P. Dodge (Rep.)	Louis J. Stark (Rep.)
Montrose .....	339	299	255	148	120	78	38	52	105	92
Morgan .....	282	177	62	74	535	372	170	161	307	266
Otero .....	952	509	419	223	282	221	60	52	94	89
Ouray .....	241	93	120	102	48	28	12	19	10	8
Park .....	204	86	80	37	60	33	10	25	12	12
Phillips .....	157	93	74	61	127	69	107	79	37	44
Pitkin .....	630	106	322	89	82	58	29	25	16	11
Prowers .....	267	115	101	61	181	130	28	22	35	26
Pueblo .....	3,718	1,209	3,877	832	904	621	314	324	361	344
Rio Blanco .....	200	70	32	30	57	33	13	19	20	19
Rio Grande .....	369	203	104	114	379	225	123	145	169	119
Routt .....	450	168	198	82	164	92	60	71	90	68
Saguache .....	307	198	111	63	241	186	114	140	61	38
San Juan .....	299	112	129	68	52	34	27	24	28	26
San Miguel .....	230	73	94	57	214	159	34	54	49	43
Sedgwick .....	107	58	31	23	182	129	72	64	52	54
Summit .....	365	188	90	70	36	20	12	17	15	6

ABSTRACT OF VOTES CAST AT A PRIMARY ELECTION HELD ON TUESDAY, SEPTEMBER 10, A. D. 1912, FOR CONGRESSMAN FIRST CONGRESSIONAL DISTRICT

COUNTIES	Atterson W. Rucker (Dem.)	George J. Kindel (Dem.)	Henry A. Drum (Dem.)	Tice W. Means (Rep.)	Michael C. Harrington (Dem.)
Adams .....	545	375	53	156	97
Arapahoe .....	423	380	30	531	118
Boulder .....	650	556	840	720	216
Denver .....	3,415	5,656	1,299	3,519	3,516
Jefferson .....	536	370	26	949	143
Lake .....	527	422	80	323	621
Larimer .....	409	200	66	1,153	148
Logan .....	203	96	50	480	163
Morgan .....	172	97	29	912	55
Park .....	123	101	4	91	33
Phillips .....	111	87	10	254	39
Sedgwick .....	91	26	5	292	9
Washington .....	207	74	27	415	35
Weld .....	683	519	106	1,464	290
Yuma .....	342	71	17	352	25
Total .....	8,437	9,030	2,642	11,611	5,538

Scattering, 9 candidates. Total, 11 votes.

Kindel over Rucker..... 593



ABSTRACT OF VOTES CAST AT A PRIMARY ELECTION HELD ON TUESDAY, SEPTEMBER 10, A. D. 1912, FOR CONGRESSMAN SECOND CONGRESSIONAL DISTRICT

COUNTIES	Harry H. Seldonridge (Dem.)	Thomas J. Ehrheart (Dem.)	Benjamin R. Kobey (Dem.)	Charles A. Ballreich (Rep.)	H. Van Buskirk (Rep.)
Archuleta	146	52	31	203	96
Baca	112	49	23	159	47
Bent	92	101	34	119	144
Chaffee	137	1,081	77	110	60
Cheyenne	179	76	27	270	187
Clear Creek	288	202	185	123	26
Conejos	1,198	476	163	723	85
Costilla	88	46	22	916	68
Crowley	216	76	31	142	65
Custer	128	112	34	63	13
Delta	359	206	191	248	288
Dolores	50	34	21	9	12
Douglas	132	94	19	167	62
Eagle	196	151	143	132	61
Elbert	86	56	18	342	191
El Paso	1,810	311	149	1,818	2,707
Fremont	772	581	224	387	203
Garfield	463	270	322	324	184
Gilpin	144	108	113	106	44
Grand	72	54	18	98	83
Gunnison	220	395	154	71	32
Hinsdale	23	27	12	52	11
Huerfano	236	54	85	1,844	92
Jackson	20	11	11	41	14
Kiowa	173	33	10	161	96
Kit Carson	147	61	41	312	134
La Plata	767	475	376	210	50
Las Animas	951	234	189	2,445	483
Lincoln	199	75	50	339	175
Mesa	477	136	161	458	917
Mineral	126	80	51	32	10
Moffat	90	20	10	116	40
Montezuma	335	253	143	52	25
Montrose	278	422	155	147	138

ABSTRACT OF VOTES CAST AT A PRIMARY ELECTION HELD ON TUESDAY, SEPTEMBER 10, A. D. 1912, FOR CONGRESSMAN SECOND CONGRESSIONAL DISTRICT—Continued

COUNTIES	Harry H. Seldomridge (Dem.)	Thomas J. Ehrheart (Dem.)	Benjamin R. Kobey (Dem.)	Charles A. Ballreich (Rep.)	H. Van Buskirk (Rep.)
Otero .....	736	304	124	276	163
Ouray .....	139	115	106	52	28
Pitkin .....	185	99	480	93	22
Prowers .....	155	121	43	179	49
Pueblo .....	1,816	2,326	754	1,285	326
Rio Blanco .....	85	47	21	73	19
Rio Grande .....	168	228	65	430	244
Routt .....	247	144	84	182	105
Saguache .....	132	224	38	336	83
San Juan .....	99	121	119	74	35
San Miguel .....	107	90	68	227	85
Summit .....	226	95	75	45	19
Teller .....	1,372	782	586	176	127
Total .....	16,177	11,108	5,856	16,167	8,148

Scattering, 2 candidates. Total, 3 votes.

Seldomridge over Ehrheart..... 5,069

Ballreich over Van Buskirk..... 8,019

ABSTRACT OF VOTES CAST AT A PRIMARY ELECTION HELD ON TUESDAY, SEPTEMBER 10, A. D. 1912, FOR JUDGE SUPREME COURT—TEN-YEAR TERM

COUNTIES	John R. Dixon (Dem.)	Tully Scott (Dem.)	Fred M. Dickerson (Dem.)	John Campbell (Rep.)	Rees D. Rees (Rep.)
Adams .....	456	543	52	124	53
Arapahoe .....	371	505	63	358	140
Archuleta .....	118	84	30	230	70
Baca .....	67	118	7	172	30
Bent .....	92	145	26	177	95
Boulder .....	737	1,277	195	706	143
Chaffee .....	506	540	144	136	41
Cheyenne .....	87	171	33	339	142
Clear Creek .....	333	343	72	138	21
Conejos .....	1,232	385	133	740	63
Costilla .....	103	51	11	939	42
Crowley .....	122	198	24	146	53
Custer .....	105	180	27	63	11
Delta .....	155	273	341	295	267
Denver .....	6,559	6,420	685	2,826	1,600
Dolores .....	22	76	10	13	11
Douglas .....	58	171	26	225	25
Eagle .....	244	175	72	158	38
Elbert .....	37	100	20	442	115
El Paso .....	735	1,228	184	2,783	2,000
Fremont .....	479	1,072	125	487	112
Garfield .....	434	541	100	372	144
Gilpin .....	148	217	39	125	27
Grand .....	52	94	10	156	40
Gunnison .....	342	348	99	88	23
Hinsdale .....	24	35	5	55	6
Huerfano .....	145	220	21	1,891	79
Jackson .....	15	28	2	52	6
Jefferson .....	262	731	67	819	201
Kiowa .....	188	24	10	198	61
Kit Carson .....	124	100	38	377	85
Lake .....	540	890	191	251	98
La Plata .....	767	699	235	201	57
Larimer .....	311	432	75	1,017	229

ABSTRACT OF VOTES CAST AT A PRIMARY ELECTION HELD ON TUESDAY, SEPTEMBER 10, A. D. 1912, FOR JUDGE SUPREME COURT—TEN-YEAR TERM—Continued

COUNTIES	John R. Dixon (Dem.)	Tully Scott (Dem.)	Fred M. Dickerson (Dem.)	John Campbell (Rep.)	Rees D. Rees (Rep.)
Las Animas .....	964	320	95	2,402	419
Lincoln .....	132	153	51	392	132
Logan .....	140	312	50	395	147
Mesa .....	311	416	87	637	809
Mineral .....	121	111	29	34	4
Moffat .....	51	66	9	138	28
Montezuma .....	328	389	104	65	17
Montrose .....	324	447	136	209	87
Morgan .....	138	197	16	723	278
Otero .....	490	677	114	321	102
Ouray .....	220	126	60	69	9
Park .....	43	198	18	86	19
Phillips .....	87	126	32	211	50
Pitkin .....	277	343	75	102	17
Prowers .....	147	159	28	209	23
Pueblo .....	2,668	2,054	493	1,112	401
Rio Blanco .....	95	61	13	89	8
Rio Grande .....	155	281	43	557	138
Routt .....	202	280	42	244	63
Saguache .....	147	230	26	377	49
San Juan .....	139	151	73	72	32
San Miguel .....	145	96	48	287	40
Sedgwick .....	63	60	7	255	53
Summit .....	218	172	45	55	8
Teller .....	691	2,404	193	245	72
Washington .....	149	144	45	292	143
Weld .....	623	874	119	1,254	325
Yuma .....	201	183	48	298	100
Total .....	25,259	29,444	5,271	23,319	9,692

Scattering, 5 candidates. Total, 5 votes.

Scott over Dixon..... 4,185

Campbell over Rees..... 18,727

ABSTRACT OF VOTES CAST AT A PRIMARY ELECTION HELD ON TUESDAY, SEPTEMBER 10, A. D. 1912, FOR GOVERNOR

COUNTIES	Joseph H. Maupin (Dem.)	Elias M. Ammons (Dem.)	Thomas J. Tynan (Dem.)	Clifford C. Parks (Rep.)	Philip E. Stewart (Rep.)
Adams .....	107	739	244	87	99
Arapahoe .....	164	614	247	216	296
Archuleta .....	39	178	23	185	116
Baca .....	71	79	36	159	57
Bent .....	29	55	217	120	184
Boulder .....	247	1,009	1,241	533	344
Chaffee .....	418	484	388	101	85
Cheyenne .....	67	82	144	288	206
Clear Creek .....	140	413	266	118	42
Conejos .....	686	901	259	695	100
Costilla .....	77	61	30	900	90
Crowley .....	156	111	90	99	121
Custer .....	227	48	64	62	16
Delta .....	204	346	241	148	470
Denver .....	3,192	6,758	4,760	1,896	2,566
Dolores .....	25	63	30	9	15
Douglas .....	6	274	11	137	123
Eagle .....	130	305	117	162	51
Elbert .....	36	98	32	278	286
El Paso .....	433	1,091	684	1,469	3,890
Fremont .....	1,295	506	329	335	309
Garfield .....	165	772	235	455	165
Gilpin .....	38	211	176	102	60
Grand .....	2	204	5	94	100
Gunnison .....	161	578	159	75	48
Hinsdale .....	21	38	13	47	15
Huerfano .....	159	180	43	1,859	129
Jackson .....	11	37	2	36	22
Jefferson .....	88	786	250	253	799
Kiowa .....	177	23	24	144	130
Kit Carson .....	60	158	48	311	173
Lake .....	398	673	623	220	159
La Plata .....	274	1,065	481	163	102
Larimer .....	149	492	245	715	673
Las Animas .....	817	409	189	2,320	682



ABSTRACT OF VOTES CAST AT A PRIMARY ELECTION HELD ON TUESDAY, SEPTEMBER 10, A. D. 1912, FOR GOVERNOR

COUNTIES	Joseph H. Maupin (Dem.)	Elias M. Ammons (Dem.)	Thomas J. Tynan (Dem.)	Clifford C. Parks (Rep.)	Philip B. Stewart (Rep.)
Lincoln	100	175	72	303	240
Logan	107	265	135	217	376
Mesa	197	344	330	452	1,180
Mineral	83	136	73	34	10
Moffat	22	93	23	126	51
Montezuma	106	666	134	49	44
Montrose	120	602	287	127	192
Morgan	45	234	84	547	533
Otero	121	628	635	266	189
Ouray	113	184	143	47	34
Park	57	181	37	55	40
Phillips	88	177	45	152	128
Pitkin	117	503	108	115	13
Prowers	72	180	111	187	53
Pueblo	1,269	575	3,959	961	677
Rio Blanco	70	95	23	96	15
Rio Grande	55	325	134	356	389
Routt	83	418	72	202	111
Saguache	113	242	73	312	122
San Juan	89	198	90	54	50
San Miguel	74	130	103	209	114
Sedgwick	44	71	15	166	160
Summit	70	298	95	39	31
Teller	691	1,472	996	134	219
Washington	118	147	78	229	215
Weld	272	917	474	890	782
Yuma	121	252	65	221	200
Total	14,686	29,349	21,037	21,247	18,676

Scattering, 7 candidates. Total, 19 votes.

Ammons over Tynan	8,312
Parks over Stewart	2,571

ABSTRACT OF VOTES CAST AT A PRIMARY ELECTION HELD ON TUESDAY, SEPTEMBER 10, A. D. 1912, FOR LIEUTENANT-GOVERNOR

COUNTIES	Benjamin F. Montgomery (Dem.)	Ben E. Beshoar (Dem.)	Herrmann W. Kluge (Dem.)	R. P. Rubin (Dem.)	Ezra T. Elliott (Rep.)	Robert G. Davenport (Rep.)
Adams .....	629	118	79	97	117	50
Arapahoe ....	452	230	72	66	336	143
Archuleta ....	90	23	12	93	193	99
Baca .....	97	47	14	18	144	61
Bent .....	103	89	13	35	121	157
Boulder .....	973	478	350	307	578	239
Chaffee .....	337	81	65	735	100	74
Cheyenne ....	194	28	28	28	285	190
Clear Creek...	388	127	75	82	120	31
Conejos .....	765	723	121	175	719	79
Costilla .....	74	44	14	22	920	72
Crowley .....	206	63	14	24	115	71
Custer .....	182	44	33	25	53	19
Delta .....	457	68	84	62	209	349
Denver .....	6,876	2,624	1,954	777	2,525	1,679
Dolores .....	57	13	5	19	8	13
Douglas .....	172	51	15	21	157	84
Eagle .....	287	56	68	86	144	58
Elbert .....	81	36	22	15	298	259
El Paso.....	1,126	334	338	229	1,780	2,874
Fremont .....	822	339	113	288	401	186
Garfield .....	760	90	151	73	329	185
Gilpin .....	190	69	50	49	102	50
Grand .....	102	26	11	11	115	72
Gunnison .....	379	122	83	150	74	32
Hinsdale .....	22	6	7	29	47	10
Huerfano ....	93	198	12	21	1,814	124
Jackson .....	31	4	5	2	35	20
Jefferson .....	500	307	98	58	751	247
Kiowa .....	181	18	10	10	138	122
Kit Carson....	146	32	38	29	283	166
Lake .....	855	285	174	195	241	107
La Plata.....	867	272	168	249	154	87
Larimer .....	539	131	66	55	771	463
Las Animas..	196	1,199	20	14	2,164	841

ABSTRACT OF VOTES CAST AT A PRIMARY ELECTION HELD ON TUESDAY, SEPTEMBER 10, A. D. 1912, FOR LIEUTENANT-GOVERNOR—  
Continued

COUNTIES	Benjamin F. Montgomery (Dem.)	Fen B. Beshoar (Dem.)	Hermann W. Kluge (Dem.)	R. P. Rubin (Dem.)	Ezra T. Elliott (Rep.)	Robert G. Davenport (Rep.)
Lincoln .....	200	48	32	41	315	265
Logan .....	217	45	48	144	249	283
Mesa .....	113	29	671	30	446	957
Mineral .....	109	71	30	62	37	6
Moffat .....	101	13	3	11	113	47
Montezuma ..	494	104	68	89	39	38
Montrose .....	507	117	101	136	152	142
Morgan .....	203	52	56	25	585	414
Otero .....	719	225	92	121	274	158
Ouray .....	176	60	55	69	53	26
Park .....	182	25	11	22	66	29
Phillips .....	140	23	35	38	190	79
Pitkin .....	486	64	57	36	87	32
Prowers .....	184	60	26	33	182	46
Pueblo .....	2,469	1,292	654	658	946	585
Rio Blanco...	156	15	7	13	67	25
Rio Grande...	274	77	40	55	591	182
Routt .....	316	107	24	55	207	94
Saguache .....	258	48	27	57	332	84
San Juan.....	162	62	59	54	81	37
San Miguel....	121	58	43	36	217	98
Sedgwick .....	70	26	7	14	195	117
Summit .....	224	94	46	47	43	22
Teller .....	1,943	524	176	221	170	132
Washington...	211	46	31	36	246	190
Weld .....	944	205	205	134	1,063	495
Yuma .....	233	74	53	54	229	176

Total ..... 30,441      11,944      7,064      6,500      23,516      14,012

Scattering, 3 candidates. Total, 3 votes.

Montgomery over Beshoar..... 18,497

Elliott over Davenport..... 9,504