

STATE OF COLORADO

Abstract of Votes Cast

AT THE

Primary Election

Held on the Tenth Day of September,
A. D. 1912

AND AT THE

General Election

Held on the Fifth Day of November,
A. D. 1912

FOR

Presidential Electors, United States Senators,
Congressmen, and State, Legislative
and District Officers

ALSO THE

Proposed Constitutional Amendments
Initiated and Referred Bills

COMPILED FROM OFFICIAL RETURNS

BY

JAMES B. PEARCE
Secretary of State

1913



DENVER, COLORADO
THE SMITH-BROOKS PRINTING CO., STATE PRINTERS
1913

ABSTRACT OF VOTES CAST AT A PRIMARY ELECTION HELD ON TUESDAY, SEPTEMBER 10, A. D. 1912, FOR REPRESENTATIVES IN THE NINETEENTH GENERAL ASSEMBLY, FROM THE COUNTY OF TELLER—Continued

Young over Beckman.....	438
Lewis over Beckman.....	554
Ferguson over Beckman.....	30
Blackmer over Dukes.....	241
Blunt over Dukes	245
Rapp over Dukes.....	7

ABSTRACT OF VOTES CAST AT A PRIMARY ELECTION HELD ON TUESDAY, SEPTEMBER 10, A. D. 1912, FOR REPRESENTATIVE IN THE NINETEENTH GENERAL ASSEMBLY, FROM THE COUNTY OF GILPIN

COUNTY	Clifford T. Parsons (Dem.)	Henry R. Eilman (Dem.)	Chas. O. Richards (Dem.)	John W. Cannon (Dem.)	Wm. F. Warren (Rep.)
Gilpin	114	129	148	92	112
Richards over Eilman (H. R.).....					19
Warren over Eilman (H. L.).....					56

ABSTRACT OF VOTES CAST AT A PRIMARY ELECTION HELD ON TUESDAY, SEPTEMBER 10, A. D. 1912, FOR REPRESENTATIVE IN THE NINETEENTH GENERAL ASSEMBLY, FROM THE COUNTY OF GILPIN

COUNTY	Tracey Hall	Harry L. Eilman (Rep.)
Gilpin	40	66

ABSTRACT OF VOTES CAST AT A PRIMARY ELECTION HELD ON TUESDAY, SEPTEMBER 10, A. D. 1912, FOR REPRESENTATIVE IN THE NINETEENTH GENERAL ASSEMBLY, FROM THE COUNTY OF GUNNISON

COUNTY	James H. Block (Dem.)	W. S. Humason (Rep.)
Gunnison	669	89

ABSTRACT OF VOTES CAST AT A PRIMARY ELECTION HELD ON TUESDAY, SEPTEMBER 10, A. D. 1912, FOR REPRESENTATIVE IN THE NINETEENTH GENERAL ASSEMBLY, FROM THE COUNTIES OF HINSDALE AND MINERAL

COUNTIES	John A. Biles (Dem.)	John L. Peters (Rep.)	Daniel W. Soward (Dem.)	Daniel W. Soward (Rep.)	C. Officer
Hinsdale	52	54	13
Mineral	265	39	110	1	1
Total	317	93	123	1	1
Biles over Soward.....					194

ABSTRACT OF VOTES CAST AT A PRIMARY ELECTION HELD ON TUESDAY, SEPTEMBER 10, A. D. 1912, FOR REPRESENTATIVE IN THE NINETEENTH GENERAL ASSEMBLY, FROM THE COUNTY OF JEFFERSON

COUNTY	Madeline Flaherty (Dem.)	Arthur M. Donnell	Wilbur F. Smith (Rep.)
Jefferson	548	432	970
Flaherty over Donnell.....		116	

ABSTRACT OF VOTES CAST AT A PRIMARY ELECTION HELD ON TUESDAY, SEPTEMBER 10, A. D. 1912, FOR REPRESENTATIVE IN THE NINETEENTH GENERAL ASSEMBLY, FROM THE COUNTY OF LA PLATA

COUNTY	Henry N. Lineberger (Dem.)	Lignoid A. O'Donnell (Rep.)	George Weaver (Dem.)
La Plata	547	229	1,227
Weaver over Lineberger.....			680

ABSTRACT OF VOTES CAST AT A PRIMARY ELECTION HELD ON TUESDAY, SEPTEMBER 10, A. D. 1912, FOR REPRESENTATIVE IN THE NINETEENTH GENERAL ASSEMBLY, FROM THE COUNTY OF LARIMER

COUNTY	J. M. Cunningham	E. T. Puleston (Dem.)	W. R. Stever	M. K. Aylesworth (Rep.)
Larimer	1,318	689	1	3

ABSTRACT OF VOTES CAST AT A PRIMARY ELECTION HELD ON TUESDAY, SEPTEMBER 10, A. D. 1912, FOR REPRESENTATIVE IN THE NINETEENTH GENERAL ASSEMBLY, FROM THE COUNTY OF MESA

COUNTY	Avery C. Newton (Rep.)	W. M. Porter (Dem.)	Seth Teasdale (Rep.)
Mesa	889	740	577
Newton over Teasdale.....		312	

ABSTRACT OF VOTES CAST AT A PRIMARY ELECTION HELD ON TUESDAY, SEPTEMBER 10, A. D. 1912, FOR REPRESENTATIVES IN THE NINETEENTH GENERAL ASSEMBLY, FROM THE COUNTY OF LAKE

COUNTY	John Gibbons (Dem.)	Dennis J. O'Neill (Dem.)	Frank E. Purple (Rep.)	Peter E. Turnbull (Dem.)
Lake	990	888	329	1,034
Turnbull over O'Neill.....			146	
Gibbons over O'Neill.....			102	

ABSTRACT OF VOTES CAST AT A PRIMARY ELECTION HELD ON TUESDAY, SEPTEMBER 10, A. D. 1912, FOR REPRESENTATIVE IN THE NINETEENTH GENERAL ASSEMBLY, FROM THE COUNTY OF MONTROSE

COUNTY	Wm. J. Horton (Dem.)	C. M. Ryan (Rep.)	O. C. Skinner (Dem.)
Montrose	441	296	716
Skinner over Horton.....			275

ABSTRACT OF VOTES CAST AT A PRIMARY ELECTION HELD ON TUESDAY, SEPTEMBER 10, A. D. 1912, FOR REPRESENTATIVE IN THE NINETEENTH GENERAL ASSEMBLY, FROM THE COUNTIES OF CROWLEY AND OTERO

COUNTIES	William Edgar (Rep.)	Albert F. Enyeart (Dem.)	R. L. Martin (Rep.)	Orlando W. West (Dem.)
Crowley	187	214	1	148
Otero	360	335	920
Total	547	549	1	1,068
West over Enyeart.....			519	

ABSTRACT OF VOTES CAST AT A PRIMARY ELECTION HELD ON TUESDAY, SEPTEMBER 10, A. D. 1912, FOR REPRESENTATIVES IN THE NINETEENTH GENERAL ASSEMBLY, FROM THE COUNTY OF LAS ANIMAS

COUNTY	W. W. Boyle (Rep.)	John Guynn (Dem.)	John Mayer (Rep.)	Foustin Mascarenas (Dem.)	Juan A. Torres (Dem.)
Las Animas	2,692	1,162	2,050	1,029	1,195
Scattering, one (1).					
Guynn over Mascarenas.....					133
Torres over Mascarenas.....					166

ABSTRACT OF VOTES CAST AT A PRIMARY ELECTION HELD ON TUESDAY, SEPTEMBER 10, A. D. 1912, FOR REPRESENTATIVE IN THE NINETEENTH GENERAL ASSEMBLY, FROM THE COUNTY OF OURAY

COUNTY	B. H. Du Praw (Dem.)	R. K. Humphrey (Rep.)	W. W. Rowan	C. M. Stanwood (Rep.)
Ouray	265	70	269	2
Rowan over Du Praw.....			4	

ABSTRACT OF VOTES CAST AT A PRIMARY ELECTION HELD ON TUESDAY, SEPTEMBER 10, A. D. 1912, FOR REPRESENTATIVE IN THE NINETEENTH GENERAL ASSEMBLY, FROM THE COUNTY OF PARK

COUNTY	S. W. Packer (Dem.)	Geo. H. Slater (Rep.)	W. J. Wallace (Dem.)
Park	145	103	138
Packer over Wallace.....			7

ABSTRACT OF VOTES CAST AT A PRIMARY ELECTION HELD ON TUESDAY, SEPTEMBER 10, A. D. 1912, FOR REPRESENTATIVE IN THE NINETEENTH GENERAL ASSEMBLY, FROM THE COUNTY OF PITKIN

COUNTY	Charles Dailey, Sr., (Dem.)	C. L. Gilbert (Rep.)	C. W. Judkins (Dem.)	Roy C. Parr (Dem.)
Pitkin	342	111	151	306
Dailey over Parr.....				36

ABSTRACT OF VOTES CAST AT A PRIMARY ELECTION HELD ON TUESDAY, SEPTEMBER 10, A. D. 1912, FOR REPRESENTATIVE IN THE NINETEENTH GENERAL ASSEMBLY, FROM THE COUNTY OF SAGUACHE

COUNTY	Mrs. Harriett Colvin (Dem.)	Geo. Curtis (Rep.)	W. E. Gardner (Rep.)	J. M. Lawrence (Dem.)	M. Ed. Werner (Dem.)
Saguache	2	1	421	145	284
Werner over Lawrence.....					139

ABSTRACT OF VOTES CAST AT A PRIMARY ELECTION HELD ON TUESDAY, SEPTEMBER 10, A. D. 1912, FOR REPRESENTATIVE IN THE NINETEENTH GENERAL ASSEMBLY, FROM THE COUNTY OF SAN JUAN

COUNTY	W. Z. Kinney (Rep.)	J. H. Slattery (Dem.)
San Juan	101	273

ABSTRACT OF VOTES CAST AT A PRIMARY ELECTION HELD ON TUESDAY, SEPTEMBER 10, A. D. 1912, FOR REPRESENTATIVE IN THE NINETEENTH GENERAL ASSEMBLY, FROM THE COUNTY OF SAN MIGUEL

COUNTY	Fred Anderson (Rep.)	Albert T. Woods (Dem.)
San Miguel	300	234

ABSTRACT OF VOTES CAST AT A PRIMARY ELECTION HELD ON TUESDAY, SEPTEMBER 10, A. D. 1912, FOR REPRESENTATIVES IN THE NINETEENTH GENERAL ASSEMBLY, FROM THE COUNTY OF PUEBLO

Geo. M. Ashton, Democrat.....	2,829
Patrick T. McDonald, Democrat.....	2,490
Chas. J. Leftwich, Democrat.....	2,426
Sterling Cawfield, Democrat.....	2,240
Hallet Gallup, Democrat.....	2,457
Etta Corrick, Democrat.....	1,070
Marvin Dameron, Democrat.....	1,608
James M. Sare, Democrat.....	1,451
Frank M. Gray, Democrat.....	1,983
M. M. Meredith, Republican.....	1,268
Jas. P. Harbauer, Republican.....	1,201
Geo. Chappelle, Republican.....	1,185
R. M. McClintock, Republican.....	7

Scattering, eleven candidates. Total, 13 votes.

Ashton over Cawfield.....	589
McDonald over Cawfield.....	250
Leftwich over Cawfield.....	186
Gallup over Cawfield.....	217

ABSTRACT OF VOTES CAST AT A PRIMARY ELECTION HELD ON TUESDAY, SEPTEMBER 10, A. D. 1912, FOR REPRESENTATIVE IN THE NINETEENTH GENERAL ASSEMBLY, FROM THE COUNTIES OF ROUTT, RIO BLANCO AND MOFFAT

COUNTIES	Albert A. Mann (Dem.)	Robert E. Norvell (Dem.)	Jas. H. Templeton (Rep.)
Moffat	43	91	156
Rio Blanco	61	119	88
Routt	284	277	293
Total	388	487	537
Norvell over Mann.....		99	

ABSTRACT OF VOTES CAST AT A PRIMARY ELECTION HELD ON TUESDAY, SEPTEMBER 10, A. D. 1912, FOR REPRESENTATIVE IN THE NINETEENTH GENERAL ASSEMBLY, FROM THE COUNTIES OF PROWERS AND BACA

COUNTIES	W. P. Ferguson (Dem.)	John S. Hasty (Rep.)	J. B. Traxler (Dem.)
Baca	52	214	137
Prowers	123	223	203
Total	175	437	340
Traxler over Ferguson.....		165	

ABSTRACT OF VOTES CAST AT A PRIMARY ELECTION HELD ON TUESDAY, SEPTEMBER 10, A. D. 1912, FOR REPRESENTATIVE IN THE NINETEENTH GENERAL ASSEMBLY, FROM THE COUNTIES OF GRAND, JACKSON AND SUMMIT

COUNTIES	Sewiers Fletcher (Dem.)	O. K. Gaymon (Rep.)
Grand	133	168
Jackson	26	48
Summit	365	56
Total	524	282

ABSTRACT OF VOTES CAST AT A PRIMARY ELECTION HELD ON TUESDAY, SEPTEMBER 10, A. D. 1912, FOR REPRESENTATIVE IN THE NINETEENTH GENERAL ASSEMBLY, FROM THE COUNTIES OF KIT CARSON, LINCOLN, CHEYENNE, YUMA AND PHILLIPS

COUNTIES	Frederick W. Buck (Rep.)	F. B. Godsmund (Rep.)	Wm. D. McGinnis (Rep.)	F. F. Vogel (Rep.)	Louis Vogt (Dem.)
Kit Carson	265	252	54	24	160
Lincoln	201	107	87	190	174
Cheyenne	268	111	109	56	125
Yuma	112	58	269	26	163
Phillips	95	19	133	23	109
Total	941	549	652	319	731
Buck over McGinnis.....				289	
Vogt over White.....					71

ABSTRACT OF VOTES CAST AT A PRIMARY ELECTION HELD ON TUESDAY, SEPTEMBER 10, A. D. 1912, FOR REPRESENTATIVE IN THE NINETEENTH GENERAL ASSEMBLY, FROM THE COUNTIES OF KIT CARSON, LINCOLN, CHEYENNE, YUMA AND PHILLIPS

COUNTIES	Robert N. White (Dem.)
Kit Carson	94
Lincoln	103
Cheyenne	126
Yuma	220
Phillips	120
Total	663

ABSTRACT OF VOTES CAST AT A PRIMARY ELECTION HELD ON TUESDAY, SEPTEMBER 10, A. D. 1912, FOR REPRESENTATIVE IN THE NINETEENTH GENERAL ASSEMBLY, FROM THE COUNTIES OF MORGAN, LOGAN, SEDGWICK AND WASHINGTON

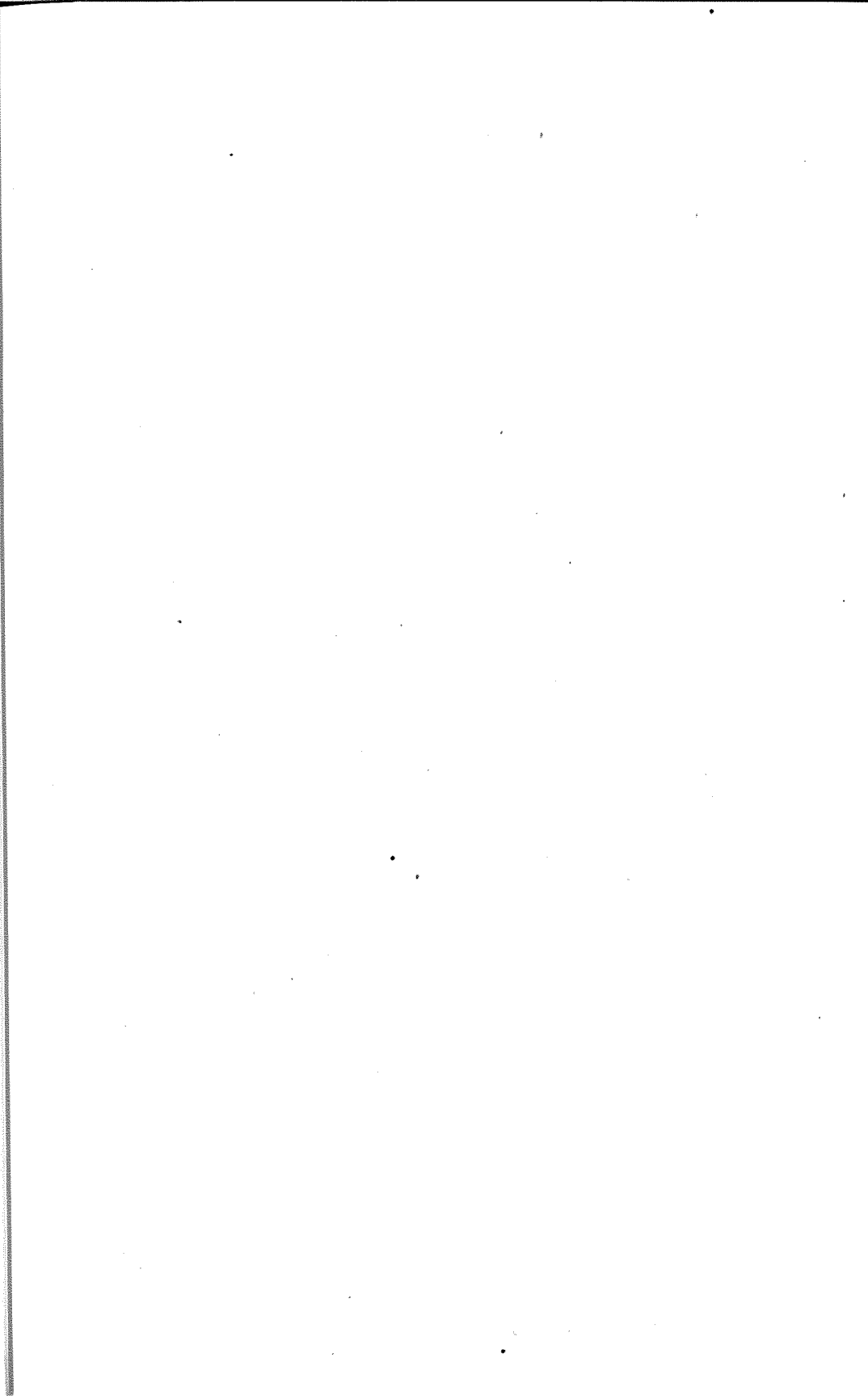
COUNTIES	Clarence O. Finch (Dem.)	James E. Jewell (Dem.)	Cuthbert F. Parker (Rep.)
Morgan	202	115	893
Logan	184	243	482
Sedgwick	92	20	348
Washington	215	82	388
Total	683	460	2,111
Finch over Jewell.....		223	

ABSTRACT OF VOTES CAST AT A PRIMARY ELECTION HELD ON TUESDAY, SEPTEMBER 10, A. D. 1912, FOR REPRESENTATIVES IN THE NINETEENTH GENERAL ASSEMBLY, FROM THE COUNTY OF WELD

U. E. Madden, Republican.....	1,327
T. A. Nixon, Republican.....	1,295
R. M. Haythorn, Republican.....	7
Chas. T. Philp, Democrat.....	964
John A. Hicks, Democrat.....	880
O. E. Frink, Democrat.....	818
Scattering, four candidates. Total, 6 votes.	
Philp over Frink.....	146
Hicks over Frink.....	62

ABSTRACT OF VOTES CAST AT A PRIMARY ELECTION HELD ON TUESDAY, SEPTEMBER 10, A. D. 1912, FOR REPRESENTATIVE IN THE NINETEENTH GENERAL ASSEMBLY, FROM THE COUNTY OF RIO GRANDE

COUNTY	George W. Gates (Dem.)	Chas. Trueblood (Rep.)
Rio Grande	435	728



ABSTRACT OF VOTES CAST AT A PRIMARY ELECTION HELD ON TUES-
DAY, SEPTEMBER 10, A. D. 1912, FOR UNITED STATES SENATOR-
LONG TERM (SIX YEARS)

COUNTIES	Alva Adams (Dem.)	John F. Shaffroth (Dem.)	Thomas J. O'Donnell (Dem.)	Clyde C. Dawson (Rep.)	Merle D. Vincent (Rep.)
Adams	176	860	118	121	66
Arapahoe	264	598	172	361	166
Archuleta	133	61	69	216	99
Baca	63	104	32	171	38
Bent	149	91	47	123	177
Boulder	531	1,324	737	593	298
Chaffee	491	443	423	145	55
Cheyenne	46	204	57	324	159
Clear Creek	213	435	250	127	34
Conejos	1,693	245	80	758	63
Costilla	124	57	4	952	71
Crowley	217	108	45	132	77
Custer	135	89	124	82	8
Delta	172	371	220	159	499
Denver	3,794	8,601	2,485	2,447	2,040
Dolores	16	95	14	10	14
Douglas	80	167	29	179	72
Eagle	156	275	176	136	69
Elbert	40	71	58	361	203
El Paso	925	1,028	400	1,842	3,235
Fremont	779	688	444	552	125
Garfield	248	774	188	348	184
Gilpin	64	181	219	97	65
Grand	26	76	87	110	93
Gunnison	135	463	336	68	51
Hinsdale	10	48	16	48	14
Huerfano	190	82	128	1,923	85
Jackson	12	29	12	49	11
Jefferson	233	745	167	731	328
Kiowa	165	46	27	165	109
Kit Carson	80	131	70	350	125
Lake	302	634	926	247	121
La Plata	515	500	900	196	74
Larimer	197	428	279	791	563

ABSTRACT OF VOTES CAST AT A PRIMARY ELECTION HELD ON TUESDAY, SEPTEMBER 10, A. D. 1912, FOR UNITED STATES SENATOR—LONG TERM (SIX YEARS)—Continued

COUNTIES	Alva Adams (Dem.)	John F. Shafroth (Dem.)	Thomas J. O'Donnell (Dem.)	Clyde C. Dawson (Rep.)	Merle D. Vincent (Rep.)
Las Animas	907	431	98	2,500	499
Lincoln	74	202	82	367	173
Logan	85	363	88	328	246
Mesa	150	467	291	418	1,221
Mineral	142	143	44	35	11
Moffat	74	48	18	139	31
Montezuma	200	533	234	56	40
Montrose	182	608	239	141	190
Morgan	60	240	66	582	491
Otero	486	712	214	304	137
Ouray	87	227	208	57	27
Park	29	138	108	87	14
Phillips	58	132	81	199	78
Pitkin	151	385	238	103	25
Prowers	92	193	81	190	46
Pueblo	3,941	899	1,145	993	649
Rio Blanco	70	86	44	78	19
Rio Grande	241	216	69	467	281
Routt	122	286	182	213	99
Saguache	179	136	123	349	89
San Juan	92	153	160	61	49
San Miguel	63	130	111	228	92
Sedgwick	34	77	23	234	83
Summit	103	174	224	41	23
Teller	945	1,920	486	207	128
Washington	87	213	71	271	176
Weld	264	1,173	283	1,092	588
Yuma	118	225	146	257	159
Total	21,410	30,562	14,496	24,911	15,055

Scattering, 35 candidates. Total, 54 votes.

Shafroth over Adams..... 9,152

Dawson over Vincent..... 9,856

ABSTRACT OF VOTES CAST AT A PRIMARY ELECTION HELD ON TUESDAY, SEPTEMBER 10, A. D. 1912, FOR UNITED STATES SENATOR—SHORT TERM (TWO YEARS)

COUNTIES	Charles S. Thomas (Dem.)	Charles W. Waterman (Rep.)	James H. Brown (Rep.)
Adams	910	80	97
Arapahoe	1,002	309	224
Archuleta	210	154	166
Baca	172	151	61
Bent	258	124	164
Boulder	2,005	556	298
Chaffee	1,103	90	92
Cheyenne	264	270	212
Clear Creek	619	114	45
Conejos	1,681	708	110
Costilla	157	923	78
Crowley	327	156	63
Custer	271	57	20
Delta	684	253	279
Denver	11,944	2,044	2,580
Dolores	96	11	14
Douglas	252	147	102
Eagle	477	115	86
Elbert	151	282	276
El Paso	2,086	2,089	2,613
Fremont	1,398	409	198
Garfield	1,013	294	228
Gilpin	348	92	67
Grand	157	111	86
Gunnison	684	66	48
Hinsdale	63	51	12
Huerfano	362	1,856	140
Jackson	35	38	13
Jefferson	1,000	676	373
Kiowa	198	146	125
Kit Carson	246	329	139
Lake	1,453	191	167
La Plata	1,466	164	95
Larimer	734	730	561

ABSTRACT OF VOTES CAST AT A PRIMARY ELECTION HELD ON TUESDAY, SEPTEMBER 10, A. D. 1912, FOR UNITED STATES SENATOR—SHORT TERM (TWO YEARS)—Continued

COUNTIES	Charles S. Thomas (Dem.)	Charles W. Waterman (Rep.)	James H. Brown (Rep.)
Las Animas	1,343	2,294	718
Lincoln	322	334	198
Logan	484	303	256
Mesa	810	400	1,032
Míneral	260	34	10
Moffat	121	117	48
Montezuma	756	48	35
Montrose	861	140	157
Morgan	326	578	418
Otero	1,154	294	149
Ouray	382	51	31
Park	256	71	25
Phillips	222	190	77
Pitkin	599	92	32
Prowers	295	190	45
Pueblo	4,486	942	574
Río Blanco	161	67	30
Río Grande	440	426	277
Routt	486	190	119
Saguache	375	301	127
San Juan	307	64	46
San Miguel	255	206	114
Sedgwick	122	227	92
Summit	405	41	23
Teller	2,641	161	161
Washington	346	262	191
Weld	1,503	957	663
Yuma	389	242	158
Total	53,933	22,985	15,638
Scattering, 28 candidates. Total, 66 votes.			
Waterman over Brown.....		7,347	

Eagle	516	123	162	97	110	41	33	32	59	40
Elbert	127	47	74	33	298	148	89	129	181	137
El Paso	1,607	920	667	529	2,654	903	241	311	3,109	2,001
Fremont	1,384	624	536	329	350	228	94	120	161	106
Garfield	1,136	306	338	189	297	182	81	85	142	107
Gilpin	294	126	147	74	92	52	22	48	37	20
Grand	139	52	49	28	93	44	26	53	52	36
Gunnison	711	252	203	111	70	42	20	19	27	14
Hinsdale	68	37	9	16	35	44	5	17	2	4
Huerfano	318	138	113	46	1,854	1,653	87	63	63	45
Jackson	39	15	13	3	35	17	14	22	6	11
Jefferson	862	525	256	172	250	114	174	543	596	171
Kiowa	218	22	153	15	161	91	23	65	59	71
Kit Carson	241	86	54	72	277	201	61	82	94	89
Lake	1,173	619	716	329	209	92	72	90	106	60
La Plata	1,389	475	571	332	142	91	52	57	57	34
Larimer	622	387	193	161	503	377	263	272	223	256
Las Animas	1,238	867	327	173	2,349	1,976	347	363	333	295
Lincoln	301	135	65	66	270	152	129	122	123	120
Logan	377	166	242	71	233	167	102	114	156	107
Mesa	771	162	377	83	374	215	120	149	896	629
Mineral	247	71	93	40	33	19	3	5	4	3
Moffat	131	44	42	15	76	94	46	31	38	22
Montezuma	682	275	186	212	35	25	13	16	17	12

ABSTRACT OF VOTES CAST AT A PRIMARY ELECTION HELD ON TUESDAY, SEPTEMBER 10, A. D. 1912, FOR CONGRESSMEN AT LARGE

COUNTIES	Edward T. Taylor (Dem.)	William L. Clayton (Dem.)	Edward Keating (Dem.)	Katherine Williamson (Dem.)	Samuel H. Kinsley (Rep.)	Jesse J. Laton (Rep.)	Albinus A. Johnson (Rep.)	James P. Miller (Rep.)	Clarence P. Dodge (Rep.)	Louis J. Stark (Rep.)
Adams	789	449	339	188	100	47	31	65	51	32
Arapahoe	668	310	368	171	283	178	98	95	127	88
Archuleta	203	71	89	37	186	131	55	59	42	36
Baca	169	92	35	26	163	84	32	55	21	31
Bent	210	71	133	31	122	84	38	61	88	69
Boulder	1,633	699	896	581	180	220	382	509	166	100
Chaffee	930	403	342	311	100	58	36	41	48	29
Cheyenne	256	132	64	60	258	158	91	109	107	105
Clear Creek	580	231	340	144	103	39	52	28	43	15
Conejos	1,452	528	844	277	683	515	82	148	28	34
Costilla	134	61	21	32	914	279	54	565	37	35
Crowley	282	86	179	44	126	100	20	40	27	35
Custer	247	67	97	51	56	26	11	11	9	9
Delta	634	249	199	128	227	147	51	61	275	191
Denver	8,928	5,477	6,617	3,592	1,732	1,342	893	600	1,869	1,769
Dolores	95	31	25	26	5	3	3	5	13	14
Douglas	220	111	105	35	149	102	42	59	43	51

Teller	2,128	982	1,477	666	181	105	55	64	119	75
Washington	268	125	66	60	225	104	50	66	105	112
Weld	1,201	1,237	333	234	902	513	322	454	405	306
Yuma	350	179	91	76	220	120	49	89	88	97
Total	45,754	21,751	24,341	12,100	21,428	13,811	5,787	7,275	11,813	8,888

Scattering, 5 candidates. Total, 8 votes

Taylor over Clayton.....	24,003
Keating over Clayton.....	2,590
Kinsley over Dodge.....	9,615
Laton over Dodge.....	1,998

ABSTRACT OF VOTES CAST AT A PRIMARY ELECTION HELD ON TUESDAY, SEPTEMBER 10, A. D. 1912, FOR CONGRESSMEN
AT LARGE—Continued

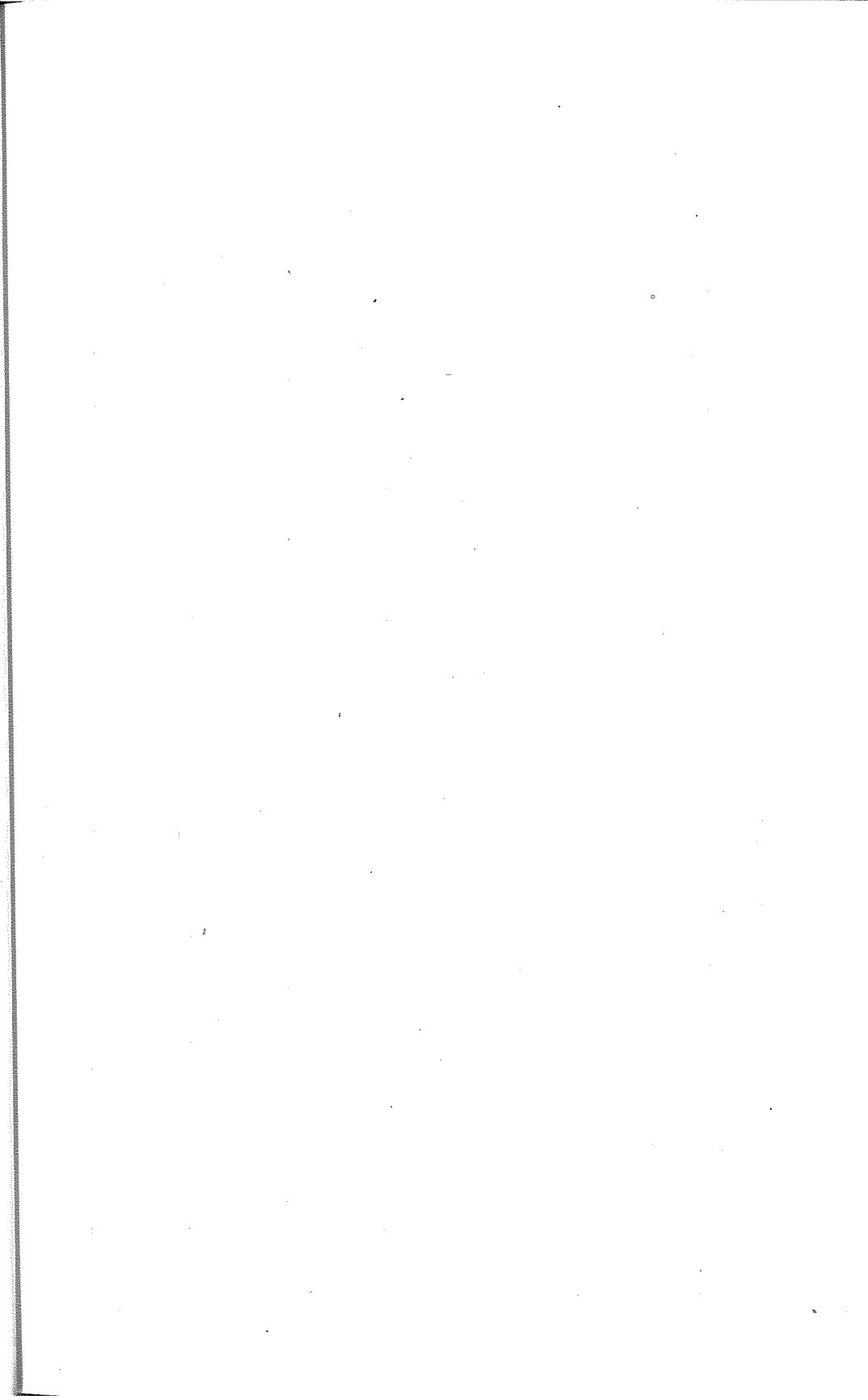
COUNTIES	Edward T. Taylor (Dem.)	William L. Clayton (Dem.)	Edward Keating (Dem.)	Katherine Williamson (Dem.)	Samuel H. Kinsley (Rep.)	Jesse J. Laton (Rep.)	Albinus A. Johnson (Rep.)	James P. Miller (Rep.)	Clarence P. Dodge (Rep.)	Louis J. Stark (Rep.)
Montrose	339	299	255	148	120	78	38	52	105	92
Morgan	282	177	62	74	535	372	170	161	307	266
Otero	952	509	419	223	282	221	60	52	94	89
Ouray	341	93	120	102	48	28	12	19	10	8
Park	204	86	80	37	60	33	10	25	12	12
Phillips	157	93	74	61	127	69	107	79	37	44
Pitkin	630	106	322	89	82	58	29	25	16	11
Prowers	267	115	101	61	181	130	28	22	35	26
Pueblo	3,718	1,209	3,877	832	904	621	314	324	361	344
Rio Blanco	200	70	32	30	57	33	13	19	20	19
Rio Grande	369	203	104	114	379	225	123	145	169	119
Routt	450	168	198	82	164	92	60	71	90	68
Saguache	307	198	111	63	241	186	114	140	61	38
San Juan	299	112	129	68	52	34	27	24	28	26
San Miguel	230	73	94	57	214	159	34	54	49	43
Sedgwick	107	58	31	23	182	129	72	64	52	54
Summit	365	188	90	70	36	20	12	17	15	6

ABSTRACT OF VOTES CAST AT A PRIMARY ELECTION HELD ON TUESDAY, SEPTEMBER 10, A. D. 1912, FOR CONGRESSMAN FIRST CONGRESSIONAL DISTRICT

COUNTIES	Atterson W. Rucker (Dem.)	George J. Kindel (Dem.)	Henry A. Drum (Dem.)	Tice W. Means (Rep.)	Michael C. Harrington (Dem.)
Adams	545	375	53	156	97
Arapahoe	423	380	30	531	118
Boulder	650	556	840	720	216
Denver	3,415	5,656	1,299	3,519	3,516
Jefferson	536	370	26	949	143
Lake	527	422	80	323	621
Larimer	409	200	66	1,153	148
Logan	203	96	50	480	163
Morgan	172	97	29	912	55
Park	123	101	4	91	33
Phillips	111	87	10	254	39
Sedgwick	91	26	5	292	9
Washington	207	74	27	415	35
Weld	683	519	106	1,464	290
Yuma	342	71	17	352	25
Total	8,437	9,030	2,642	11,611	5,538

Scattering, 9 candidates. Total, 11 votes.

Kindel over Rucker..... 593



ABSTRACT OF VOTES CAST AT A PRIMARY ELECTION HELD ON TUESDAY, SEPTEMBER 10, A. D. 1912, FOR CONGRESSMAN SECOND CONGRESSIONAL DISTRICT

COUNTIES	Harry H. Seldonridge (Dem.)	Thomas J. Ehrheart (Dem.)	Benjamin R. Kobey (Dem.)	Charles A. Ballreich (Rep.)	H. Van Buskirk (Rep.)
Archuleta	146	52	31	203	96
Baca	112	49	23	159	47
Bent	92	101	34	119	144
Chaffee	137	1,081	77	110	60
Cheyenne	179	76	27	270	187
Clear Creek	288	202	185	123	26
Conejos	1,198	476	163	723	85
Costilla	88	46	22	916	68
Crowley	216	76	31	142	65
Custer	128	112	34	63	13
Delta	359	206	191	248	288
Dolores	50	34	21	9	12
Douglas	132	94	19	167	62
Eagle	196	151	143	132	61
Elbert	86	56	18	342	191
El Paso	1,810	311	149	1,818	2,707
Fremont	772	581	224	387	203
Garfield	463	270	322	324	184
Gilpin	144	108	113	106	44
Grand	72	54	18	98	83
Gunnison	220	395	154	71	32
Hinsdale	23	27	12	52	11
Huerfano	236	54	85	1,844	92
Jackson	20	11	11	41	14
Kiowa	173	33	10	161	96
Kit Carson	147	61	41	312	134
La Plata	767	475	376	210	50
Las Animas	951	234	189	2,445	483
Lincoln	199	75	50	339	175
Mesa	477	136	161	458	917
Mineral	126	80	51	32	10
Moffat	90	20	10	116	40
Montezuma	335	253	143	52	25
Montrose	278	422	155	147	138

ABSTRACT OF VOTES CAST AT A PRIMARY ELECTION HELD ON TUESDAY, SEPTEMBER 10, A. D. 1912, FOR CONGRESSMAN SECOND CONGRESSIONAL DISTRICT—Continued

COUNTIES	Harry H. Seldomridge (Dem.)	Thomas J. Ehrheart (Dem.)	Benjamin R. Kobey (Dem.)	Charles A. Ballreich (Rep.)	H. Van Buskirk (Rep.)
Otero	736	304	124	276	163
Ouray	139	115	106	52	28
Pitkin	185	99	480	93	22
Prowers	155	121	43	179	49
Pueblo	1,816	2,326	754	1,285	326
Rio Blanco	85	47	21	73	19
Rio Grande	168	228	65	430	244
Routt	247	144	84	182	105
Saguache	132	224	38	336	83
San Juan	99	121	119	74	35
San Miguel	107	90	68	227	85
Summit	226	95	75	45	19
Teller	1,372	782	586	176	127
Total	16,177	11,108	5,856	16,167	8,148

Scattering, 2 candidates. Total, 3 votes.

Seldomridge over Ehrheart..... 5,069

Ballreich over Van Buskirk..... 8,019

ABSTRACT OF VOTES CAST AT A PRIMARY ELECTION HELD ON TUESDAY, SEPTEMBER 10, A. D. 1912, FOR JUDGE SUPREME COURT—TEN-YEAR TERM

COUNTIES	John R. Dixon (Dem.)	Tully Scott (Dem.)	Fred M. Dickerson (Dem.)	John Campbell (Rep.)	Rees D. Rees (Rep.)
Adams	456	543	52	124	53
Arapahoe	371	505	63	358	140
Archuleta	118	84	30	230	70
Baca	67	118	7	172	30
Bent	92	145	26	177	95
Boulder	737	1,277	195	706	143
Chaffee	506	540	144	136	41
Cheyenne	87	171	33	339	142
Clear Creek	333	343	72	138	21
Conejos	1,232	385	133	740	63
Costilla	103	51	11	939	42
Crowley	122	198	24	146	53
Custer	105	180	27	63	11
Delta	155	273	341	295	267
Denver	6,559	6,420	685	2,826	1,600
Dolores	22	76	10	13	11
Douglas	58	171	26	225	25
Eagle	244	175	72	158	38
Elbert	37	100	20	442	115
El Paso	735	1,228	184	2,783	2,000
Fremont	479	1,072	125	487	112
Garfield	434	541	100	372	144
Gilpin	148	217	39	125	27
Grand	52	94	10	156	40
Gunnison	342	348	99	88	23
Hinsdale	24	35	5	55	6
Huerfano	145	220	21	1,891	79
Jackson	15	28	2	52	6
Jefferson	262	731	67	819	201
Kiowa	188	24	10	198	61
Kit Carson	124	100	38	377	85
Lake	540	890	191	251	98
La Plata	767	699	235	201	57
Larimer	311	432	75	1,017	229

ABSTRACT OF VOTES CAST AT A PRIMARY ELECTION HELD ON TUESDAY, SEPTEMBER 10, A. D. 1912, FOR JUDGE SUPREME COURT—TEN-YEAR TERM—Continued

COUNTIES	John R. Dixon (Dem.)	Tully Scott (Dem.)	Fred M. Dickerson (Dem.)	John Campbell (Rep.)	Rees D. Rees (Rep.)
Las Animas	964	320	95	2,402	419
Lincoln	132	153	51	392	132
Logan	140	312	50	395	147
Mesa	311	416	87	637	809
Mineral	121	111	29	34	4
Moffat	51	66	9	138	28
Montezuma	328	389	104	65	17
Montrose	324	447	136	209	87
Morgan	138	197	16	723	278
Otero	490	677	114	321	102
Ouray	220	126	60	69	9
Park	43	198	18	86	19
Phillips	87	126	32	211	50
Pitkin	277	343	75	102	17
Prowers	147	159	28	209	23
Pueblo	2,668	2,054	493	1,112	401
Rio Blanco	95	61	13	89	8
Rio Grande	155	281	43	557	138
Routt	202	280	42	244	63
Saguache	147	230	26	377	49
San Juan	139	151	73	72	32
San Miguel	145	96	48	287	40
Sedgwick	63	60	7	255	53
Summit	218	172	45	55	8
Teller	691	2,404	193	245	72
Washington	149	144	45	292	143
Weld	623	874	119	1,254	325
Yuma	201	183	48	298	100
Total	25,259	29,444	5,271	23,319	9,692

Scattering, 5 candidates. Total, 5 votes.

Scott over Dixon..... 4,185

Campbell over Rees..... 18,727

ABSTRACT OF VOTES CAST AT A PRIMARY ELECTION HELD ON TUESDAY, SEPTEMBER 10, A. D. 1912, FOR GOVERNOR

COUNTIES	Joseph H. Maupin (Dem.)	Elias M. Ammons (Dem.)	Thomas J. Tynan (Dem.)	Clifford C. Parks (Rep.)	Philip B. Stewart (Rep.)
Adams	107	739	244	87	99
Arapahoe	164	614	247	216	296
Archuleta	39	178	23	185	116
Baca	71	79	36	159	57
Bent	29	55	217	120	184
Boulder	247	1,009	1,241	533	344
Chaffee	418	484	388	101	85
Cheyenne	67	82	144	288	206
Clear Creek	140	413	266	118	42
Conejos	686	901	259	695	100
Costilla	77	61	30	900	90
Crowley	156	111	90	99	121
Custer	227	48	64	62	16
Delta	204	346	241	148	470
Denver	3,192	6,758	4,760	1,896	2,566
Dolores	25	63	30	9	15
Douglas	6	274	11	137	123
Eagle	130	305	117	162	51
Elbert	36	98	32	278	286
El Paso	433	1,091	684	1,469	3,890
Fremont	1,295	506	329	335	309
Garfield	165	772	235	455	165
Gilpin	38	211	176	102	60
Grand	2	204	5	94	100
Gunnison	161	578	159	75	48
Hinsdale	21	38	13	47	15
Huerfano	159	180	43	1,859	129
Jackson	11	37	2	36	22
Jefferson	88	786	250	253	799
Kiowa	177	23	24	144	130
Kit Carson	60	158	48	311	173
Lake	398	673	623	220	159
La Plata	274	1,065	481	163	102
Larimer	149	492	245	715	673
Las Animas	817	409	189	2,320	682

ABSTRACT OF VOTES CAST AT A PRIMARY ELECTION HELD ON TUESDAY, SEPTEMBER 10, A. D. 1912, FOR GOVERNOR

COUNTIES	Joseph H. Maupin (Dem.)	Elias M. Ammons (Dem.)	Thomas J. Tynan (Dem.)	Clifford C. Parks (Rep.)	Philip B. Stewart (Rep.)
Lincoln	100	175	72	303	240
Logan	107	265	135	217	376
Mesa	197	344	330	452	1,180
Mineral	83	136	73	34	10
Moffat	22	93	23	126	51
Montezuma	106	666	134	49	44
Montrose	120	602	287	127	192
Morgan	45	234	84	547	533
Otero	121	628	635	266	189
Ouray	113	184	143	47	34
Park	57	181	37	55	40
Phillips	88	177	45	152	128
Pitkin	117	503	108	115	13
Prowers	72	180	111	187	53
Pueblo	1,269	575	3,959	961	677
Rio Blanco	70	95	23	96	15
Rio Grande	55	325	134	356	389
Routt	83	418	72	202	111
Saguache	113	242	73	312	122
San Juan	89	198	90	54	50
San Miguel	74	130	103	209	114
Sedgwick	44	71	15	166	160
Summit	70	298	95	39	31
Teller	691	1,472	996	134	219
Washington	118	147	78	229	215
Weld	272	917	474	890	782
Yuma	121	252	65	221	200
Total	14,686	29,349	21,037	21,247	18,676

Scattering, 7 candidates. Total, 19 votes.

Ammons over Tynan..... 8,312

Parks over Stewart..... 2,571