

STATE OF COLORADO

Roster of Elected Officers

AND

Tabulated Statement of the Votes Cast
for the Several Candidates

FOR THE OFFICES OF

Judge of the Supreme Court
District Judge of the 11th Judicial District
To Fill Vacancy
Congressman at Large in the LXII Congress
Congressman 1st District, LXII Congress
Congressman 2d District, LXII Congress
Governor Lieutenant Governor
Secretary of State State Treasurer
Auditor of State Attorney General
Railroad Commissioner
State Superintendent of Public Instruction
Regents of the State University
Senators in the 18th General Assembly
Representatives in the 18th General Assembly

In the Several Counties of the State
at the General Election Held on

Tuesday, November 8, A. D. 1910

COMPILED FROM OFFICIAL RETURNS

BY

JAMES B. PEARCE
Secretary of State
1911

DENVER, COLORADO
THE SMITH-BROOKS PRINTING CO., STATE PRINTERS
1911

Twelfth Senatorial District.

COUNTIES.	James P. Curry (R).	Hiram E. Hilts (D).	Sidney R. Propst (C-P).	Total.	Curry's Plurality.	Hilts' Plurality.
Adams	1,032	1,321	58	2,411	289
Morgan	1,766	518	152	2,436	1,248
Logan	1,175	758	698	2,631	417
Sedgwick	611	384	13	1,008	227
City and county of Denver.	14,713	17,690	14,051	46,454	2,977
Totals	19,297	20,671	14,972	54,940		
D—Hiram E. Hilts' plurality.....						1,374

Fourteenth Senatorial District.

COUNTIES.	Robert M. Born (D).	Chas. Hayden (R).	Total.	Hayden's Plurality.	Born's Plurality.
Costilla	443	1,251	1,694	808
Huerfano	1,034	2,794	3,828	1,760
Conejos	2,281	1,683	3,964	598
Totals	3,758	5,728	9,486		
R—Chas. Hayden's plurality.....					1,970

Fifteenth Senatorial District.

COUNTIES.	John MacArthur (R).	B. H. Parkinson (S).	Myron W. Sutley (D).	Total.	MacArthur's Plurality.	Sutley's Plurality.
Saguache	777	26	697	1,500	80
Mineral	244	93	334	671	90
Rio Grande	1,582	36	818	2,436	764
Totals	2,603	155	1,849	4,607
R—John MacArthur's plurality.....					754	

ABSTRACT OF VOTES CAST FOR STATE SENATORS AT THE GENERAL ELECTION IN 1910.—Continued.

Sixteenth Senatorial District.

COUNTIES.	George Stephan (R).	John A. Whiting (D).	Robert S. Clark (S).	Total.	Stephan's Plurality.	Whiting's Plurality.
Mesa	3,077	2,503	641	6,221	574	...
Delta	1,958	1,992	349	4,299	...	34
Totals	5,035	4,495	990	10,520		
R—George Stephan's plurality.....					540	

Seventeenth Senatorial District.

COUNTIES.	John R. Galloway (R).	John J. Tobin (D).	Total.	Tobin's Plurality.
Montrose	1,040	1,967	3,007	927
San Miguel.....	862	866	1,728	4
Dolores	57	115	172	58
Totals	1,959	2,948	4,907	989
D—John J. Tobin's plurality.....				989

Eighteenth Senatorial District.

COUNTIES.	Fred Goble (R).	John T. Joyce (D).	Total.	Goble's Plurality.	Joyce's Plurality.
Ouray	731	832	1,563	..	101
San Juan	453	740	1,193	..	237
Hinsdale	148	164	312	..	16
Archuleta	456	366	822	90	...
Totals	1,788	2,102	890		
D—John T. Joyce's plurality.....				314	

ABSTRACT OF VOTES CAST FOR STATE SENATORS AT THE GENERAL ELECTION IN 1910.—Continued.

Twentieth Senatorial District.

COUNTIES.	Norman J. Garelts (S).	Celsus P. Link (D).	Ralph Tucker (R).	Total.	Link's Plurality.	Tucker's Plurality.
Chaffee	377	1,233	1,398	3,008	..	165
Park	29	562	494	1,085	68	...
Totals	406	1,795	1,892	4,093		
R—Ralph Tucker's plurality.....						97

Twenty-fifth Senatorial District.

COUNTIES.	Frank R. Dunlavy (D).	Amos N. Parrish (R).	H. J. Taylor (S).	Total.	Dunlavy's Plurality.	Parrish's Plurality.
Las Animas.....	4,305	3,714	171	8,190	591	...
Bent	748	859	16	1,623	...	111
Prowers	973	1,407	75	2,455	...	434
Baca	238	320	43	601	...	82
Kiowa	546	583	17	1,146	...	37
Totals	6,810	6,883	322	14,015		
R—Amos Parrish's plurality.....						73

Twenty-seventh Senatorial District.

COUNTIES.	Sherman S. Bellesfield (D).	Patrick Byrnes (R).	Total.	Bellesfield's Plurality.
Pueblo	7,335	5,664	12,999	1,671
Custer	522	445	967	77
Totals	7,857	6,109	13,966	
D—Sherman S. Bellesfield's plurality.....				1,748

Twenty-eighth Senatorial District.

COUNTIES.	Martin M. Burns (D).	Arthur Cornforth (R).	Total.	Burns' Plurality.	Cornforth's Plurality.
El Paso	5,372	5,578	10,950	206
Douglas	674	658	1,332	16
Elbert	807	956	1,763	149
Lincoln	767	847	1,614	80
Cheyenne	419	563	982	144
Totals	8,039	8,602	16,641		
R—Arthur Cornforth's plurality.....				563	

Twenty-ninth Senatorial District.

COUNTIES.	W. J. Metz (D).	William Walk (R).	Total.	Metz's Plurality.	Walk's Plurality.
Pueblo	7,457	5,494	12,951	1,963
Fremont	2,777	2,846	5,623	69
Teller	3,300	2,091	5,391	1,209
Totals	13,534	10,431	23,965		
D—W. J. Metz's plurality.....				3,103	

Thirtieth Senatorial District.

COUNTIES.	Wilbur M. Alter (R).	Ed. W. Moore (S).	Tully Scott (C).	Louis A. Van Tilborg (D)	Total.	VanTilborg's Plurality.
Teller	1,687	369	2,076	2,142	6,274	66
D—Louis A. Van Tilborg's plurality.....				66		

ABSTRACT OF VOTES CAST AT A GENERAL ELECTION HELD ON TUESDAY, NOVEMBER EIGHTH, A. D. 1910, FOR MEMBERS OF THE HOUSE OF REPRESENTATIVES FOR THE CITY AND COUNTY OF DENVER.

Gaines M. Allen, Democratic.....	17,577
Julia R. Allen, Citizens, Platform, Progressive.....	13,565
J. Angerer, Socialist	1,727
Charles Baer, Republican	13,980
William L. Boatright, Citizens, Platform, Progressive.....	14,697
Henry Brady, Republican	13,825
Ella B. Butler, Prohibition	629
Frank Damascio, Republican	13,646
William C. Danks, Citizens, Platform, Progressive.....	14,506
Marshall Dewitt, Socialist	1,773
Elizabeth Donley, Citizens, Platform, Progressive.....	13,839
Charles F. DuBois, Insurgent.....	239
Armenia E. Epley, Prohibition.....	551
Laurence H. Fitzgerald, Republican.....	14,186
Frank L. Gardell, Insurgent.....	179
James O. Garrett, Democratic.....	17,246
Dayton Gilbert, Prohibition.....	557
James M. Green, Citizens, Platform, Progressive.....	14,111
Bernard Gridenburg, Democratic.....	16,856
Rolla M. Head, Insurgent.....	125
Alice Polk Hill, Republican.....	14,272
Frank Hobler, Socialist.....	1,717
Fred J. Homer, Democratic.....	17,345
Alice L. Horne, Republican.....	13,701
Louise U. Jones, Democratic.....	16,792
Wade A. Jones, Citizens, Platform, Progressive.....	14,046
Bertha C. Keller, Prohibition.....	553
Louise M. Kerwin, Democratic.....	16,883
Albert Kiefer, Socialist.....	1,675
A. H. Kirby, Socialist.....	1,617
Francis J. Knauss, Republican.....	14,304
Alma V. Lafferty, Democratic.....	16,702
Gail Laughlin, Citizens, Platform, Progressive, Prohibition.....	14,809
W. H. Leonard, Socialist.....	1,789
Carl M. Lindquist, Democratic.....	17,572
James Lugg, Prohibition.....	594
Lizzie M. Mason, Prohibition.....	512
Henry E. May, Republican.....	15,954
Clarence J. Moorhouse, Citizens, Platform, Progressive.....	14,245
Daniel Morgan, Insurgent	182

ABSTRACT OF VOTES CAST AT A GENERAL ELECTION HELD ON TUESDAY, NOVEMBER EIGHTH, A. D. 1910, FOR MEMBERS OF THE HOUSE OF REPRESENTATIVES FOR THE CITY AND COUNTY OF DENVER—Concluded.

John J. Morrisey, Citizens, Platform, Progressive.....	14,044
Phil. McCarty, Democratic.....	17,151
George McLachlan, Democratic.....	16,995
Sadie McManus, Citizens, Platform, Progressive.....	13,817
Albert Nelson, Socialist.....	1,687
B. F. Perry, Socialist.....	1,649
Theodore H. Proske, Democratic.....	17,112
Jason Read, Prohibition.....	539
Louis DeVacht Regnier, Prohibition.....	460
Samuel J. Sackett, Republican.....	14,021
George E. Seeley, Insurgent.....	136
Peter Shirofsky, Socialist.....	1,622
George Siefert, Insurgent.....	117
William A. Smith, Republican.....	13,730
Burton J. Symonds, Republican.....	13,700
H. H. Tangeman, Citizens, Platform, Progressive, Prohibition.....	14,217
Charles E. Venard, Insurgent.....	124
Jesse Vetter, Socialist.....	1,693
George D. Weeks, Prohibition.....	555
W. P. Williams, Socialist.....	1,565

Pluralities of candidates elected over vote cast for next highest candidate—H. E. May (R), 15,954.

Gaines M. Allen, Democratic.....	1,623
James O. Garrett, Democratic.....	1,292
Bernard Gridenburg, Democratic.....	902
Fred J. Homer, Democratic.....	1,391
Louise U. Jones, Democratic.....	898
Louise M. Kerwin, Democratic.....	929
Alma V. Lafferty, Democratic.....	748
Carl M. Lindquist, Democratic.....	1,618
Phil. McCarty, Democratic.....	1,197
George McLachlan, Democratic.....	1,041
Theodore H. Proske, Democratic.....	1,158

ABSTRACT OF VOTES CAST FOR REPRESENTATIVES AT THE GENERAL ELECTION, 1910.

Archuleta and Conejos Counties.

COUNTIES.	Chas. A. Day (R).	B. L. VanVecten (D).	Total.	Plurality of Chas. A. Day.	Plurality of B. L. VanVecten.
Archuleta	481	385	866	96
Conejos	1,398	2,575	3,973	1,177
Totals	1,879	2,960	4,839		
D—B. L. VanVecten's Plurality.....				1,081	

Conejos County.

COUNTY.	J. C. Cantu (D).	Celestino Garcia (R).	Total.	Plurality of Cantu
Conejos	2,236	1,730	3,968	506
D—J. C. Cantu's Plurality.....				506

Bent and Kiowa Counties.

COUNTIES.	Geo. D. Dulin (R).	Dr. W. A. Whittle (D).	Total.	Plurality of Geo. D. Dulin.	Plurality of Dr. W. A. Whittle.
Bent	920	712	1,632	208
Kiowa	524	630	1,154	106
Totals	1,444	1,342	2,786		
D—Geo. D. Dulin's Plurality.....				102	

Chaffee County.

COUNTY.	Arthur Bromley (R).	L. A. Hollenbeck (D).	S. A. Wilson (S).	Total.	Plurality of Hollenbeck.
Chaffee	1,314	1,371	326	3,011	57
D—Plurality of L. A. Hollenbeck.....				57	

ABSTRACT OF VOTES CAST FOR REPRESENTATIVES AT THE GENERAL ELECTION—Continued.

Chaffee and Fremont Counties.

COUNTIES.	T. H. Burbridge (S).	William W. Fay (D).	Gilbert A. Walker (R).	Total.	Plurality of Fay.	Plurality of Walker.
Chaffee	340	1,359	1,314	3,013	45	..
Fremont	313	2,695	2,936	5,944	241
Totals	653	4,054	4,250	8,957		
R—Plurality of Gilbert A. Walker.....					196	

Fremont County.

COUNTY.	Alfred Durfee (D).	D. H. Ludwig (S).	John Kile (R).	Total.	Plurality of Alfred Durfee.	
Fremont	2,920	2,788	297	6,005	132	
D—Plurality of Alfred Durfee.....					132	

Clear Creek County.

COUNTY.	Charles S. Berkins (R).	John W. Old (D).	Total.	Plurality of John W. Old.
Clear Creek.....	871	917	1,788	46
D—Plurality of John W. Old.....				46

Custer County.

COUNTY.	Frank L. Kennicott (R).	A. D. MacKenzie (D).	Total.	Plurality of A. D. MacKenzie
Custer	474	502	976	28
D—Plurality of A. D. MacKenzie.....				28

ABSTRACT OF VOTES CAST FOR REPRESENTATIVES AT THE GENERAL ELECTION—Continued.

Costilla and Huerfano Counties.

COUNTIES.	Antonio D. Valdez (R).	C. J. Young (D).	Total.	Plurality of Valdez
Costilla	1,264	444	1,708	820
Huerfano	2,765	1,053	3,818	1,712
Totals	4,029	1,497	5,526	2,532
R—Plurality of Antonio D. Valdez.....				2,532

Delta County.

COUNTY.	John A. Hanson (D).	Carroll C. Hawkins (R).	Elmer W. Loomis (S).	Total.	Hawkins' Plurality.
Delta	1,697	2,259	351	4,307	562
R—Plurality of Carroll C. Hawkins.....					562

Douglas County.

COUNTY.	C. B. Frink (R).	W. W. Porteous (D).	Total Vote.	Plurality of Porteous
Douglas	628	716	1,344	88
D—Plurality of W. W. Porteous.....				88

Adams, Arapahoe and Elbert Counties.

COUNTIES.	Agnes L. Riddle (R).	John Roth (D).	Total Vote.	Plurality of Agnes L. Riddle.	Plurality of John Roth.
Adams	1,036	1,361	2,397	...	325
Arapahoe	1,665	1,376	3,041	289	...
Elbert	1,012	701	1,713	311	...
Totals	3,713	3,438	7,151	606	325
R—Plurality of Agnes L. Riddle.....				275	

ABSTRACT OF VOTES CAST FOR REPRESENTATIVES AT THE GENERAL ELECTION—Continued.

Dolores and Montezuma Counties.

COUNTIES.	William G. Clucas (R).	W. B. Ebbert (D).	Total Vote.	Plurality of W. B. Ebbert.
Dolores	57	114	171	57
Montezuma	599	806	1,405	207
Totals	656	920	1,576	264
D—Plurality of W. B. Ebbert.....				264

Eagle County.

COUNTY.	James Dilts (R).	James E. Doud (D).	C. B. Stone (S).	Total.	Plurality of James E. Doud.
Eagle	468	542	263	1,273	74
D—Plurality of James E. Doud.....					74

El Paso County.

COUNTY.	A. S. Blake (P).	E. P. Crowley (P).	W. C. Dalley (D).	Robert S. Ellison (R).	Lewis T. Ginger (R).
El Paso	872	799	4,371	5,912	5,843

El Paso County.

COUNTY.	Rev. J. H. Ketchum (P).	J. K. Radley (D).	F. E. Torbitt (R).	Joseph C. Zimmerman (D).
El Paso	681	4,200	5,883	4,207

Pluralities of candidates elected over vote cast for next highest, W. C. Dalley—4,371.

R—Plurality of F. E. Torbitt.....1,512

R—Plurality of Lewis T. Ginger.....1,472

R—Plurality of Robert S. Ellison.....1,541

ABSTRACT OF VOTES CAST FOR REPRESENTATIVES AT THE GENERAL ELECTION—Continued.

Teller County.

COUNTY.	J. S. Anderson (R).	James L. Bacon (D).	Jno. S. Beckman (C).	Mrs. Robert Brown (S).	W. E. Butler (S).
Teller	1,911	2,342	1,532	463	474

Teller County.

COUNTY.	E. R. Coatsworth (C).	Frank K. Gunn (R).	Wm. A. Harrison (R).	Geo. M. Hollenbeck (D).	W. E. Hummer (C).
Teller	1,569	1,831	1,820	2,370	1,455

Teller County.

COUNTY.	O. P. Pherson (S).	Clinton E. Roberts (D).
Teller	454	2,370

Pluralities of candidates elected over J. S. Anderson (R) who received highest vote outside of three elected—1,911.

D—Plurality of James L. Bacon..... 431

D—Plurality of George M. Hollenbeck..... 459

D—Plurality of Clinton E. Roberts..... 459

Garfield County.

COUNTY.	Joseph Luxen (D).	Horace Mann (R).	Total.	Plurality of Horace Mann.
Garfield	1,657	1,717	3,374	60
				R—Plurality of Horace Mann..... 60

ABSTRACT OF VOTES CAST FOR REPRESENTATIVES AT THE GENERAL ELECTION—Continued.

Gilpin County.

COUNTY.	Leroy J. Williams (R).	Hugh J. Williams (D).	Total.	Plurality of Leroy J. Williams.
Gilpin	922	754	1,676	168
R—Plurality of Leroy J. Williams.....				168

Gunnison County.

COUNTY.	Laura E. Lewis (R).	John E. Pearson (D).	E. M. Williams (S).	Total.	Plurality of John E. Pearson.
Gunnison	800	1,309	98	2,207	509
D—Plurality of John E. Pearson.....				509	

Hinsdale and Mineral Counties.

COUNTIES.	Guy M. Doering (S).	C. V. Kinney (R).	P. J. McPolin (D).	Total.	Plurality of P. J. McPolin.
Hinsdale	58	115	150	323	35
Mineral	109	229	334	672	165
Totals	167	344	484	995	140
D—Plurality of P. J. McPolin.....				140	

Boulder County.

COUNTY.	A. P. Ardourel (D).	F. W. Bader (S).	James E. Hubbard (R).	Joseph Hurd (D).	James E. Park (P).	W. A. Phelps (S).	Guilford D. Rider (P).	A. W. Widnfeld (R).
Boulder	5,002	511	3,988	4,572	461	505	605	3,954

Pluralities of candidates elected over vote cast for James E. Hubbard (R) who received next highest—3,988.

D—Plurality of A. P. Ardourel..... 1,014

D—Plurality of Joseph Hurd..... 584

ABSTRACT OF VOTES CAST FOR REPRESENTATIVES AT THE GENERAL ELECTION—Continued.

Jefferson County.

COUNTY.	E. F. Carver (D).	Wilbur F. Smith (R).	J. H. Weidman (S).	Total.	Smith's Plurality.
Jefferson	2,275	2,406	212	4,893	131
R—Wilbur F. Smith's plurality.....					131

Lake County.

COUNTY.	Charles E. Bott (D).	Wm. Henry Confield (R).	Chas. E. Goodfriend (D).	Price Wanklin (R).
Lake	2,092	1,663	2,137	1,730
D—Chas. E. Goodfriend's plurality over Wanklin.....				407
D—Chas. E. Bott's plurality over Wanklin.....				352

La Plata County.

COUNTY.	John McGuigan (S).	Robert Nelson (R).	Geo. Weaver (D).	Total.	Weaver's Plurality.
La Plata	324	1,533	1,733	3,290	500
D—Geo. Weaver's plurality.....					500

Larimer County.

COUNTY.	P. C. Benson (P).	J. M. Cunningham (R).	Nathaniel C. Farnsworth (D).	Total.	Cunningham's Plurality.
Larimer	312	3,839	2,526	6,677	313
R—Cunningham's plurality					313

ABSTRACT OF VOTES CAST FOR REPRESENTATIVES AT THE GENERAL ELECTION—Continued.

Las Animas County.

COUNTY.	Isaac Amador (R).	W. W. Foyle (R).	Jessie C. Caldwell (D).	James J. Dailey (S).	Daniel Gurule (D).	Mrs. Susan Yockey (S).
Las Animas	4,285	4,344	3,648	171	3,541	168
R—Boyle's plurality over Caldwell.....						696
R—Amador's plurality over Caldwell.....						637

Mesa County.

COUNTY.	A. C. Newton (R).	W. M. Porter (D).	Geo. W. Falconer (S).	Total	A. C. Newton's Plurality.
Mesa	2,943	2,654	624	6,221	289
R—Newton's plurality.....					289

Montrose County.

COUNTY.	Frank F. Fraser (R).	O. C. Skinner (D).	Chas. E. Williams (S).	Total	Skinner's Plurality.
Montrose	1,289	1,742	270	3,301	453
D—Skinner's plurality					453

Otero County.

COUNTY.	O. J. Baxter (D).	Henry M. Fosdick (R).	F. O. Keyes (S).	Total	Baxter's Plurality.
Otero	2,977	2,702	124	5,803	275
D—Baxter's plurality					275

ABSTRACT OF VOTES CAST FOR REPRESENTATIVES AT THE GENERAL ELECTION—Continued.

Ouray County.

COUNTY.	Asbury Armin (D).	Albert Arps (R).	Total	Arps' Plurality.
Ouray	759	834	1,593	75
R—Arps' plurality				75

Park County.

COUNTY.	George Champion (D).	Geo. H. Slater (R).	Total	Slater's Plurality.
Park	477	607	1,084	130
R—Slater's plurality				130

Pitkin County.

COUNTY.	Henry Beck (R)	C. W. Judkins (D)	George Smith (S).	Total	Judkins' Plurality.
Pitkin	614	635	125	1,374	21
D—Judkins' plurality					21

Saguache County.

COUNTY.	W. E. Gardner (R).	Henry W. Riblett (D).	Total	Gardner's Plurality.
Saguache	860	639	1,499	221
R—Gardner's plurality				221

ABSTRACT OF VOTES CAST FOR REPRESENTATIVES AT THE GENERAL ELECTION—Continued.

San Juan County.

COUNTY.	John H. Slattery (D)	Chas. Thompson (R).	Total	Slattery's Plurality.
San Juan	658	545	1,203	113
D—Slattery's plurality				113

San Miguel County.

COUNTY.	Fred Anderson (R).	Robert N. Rogers (D).	Total.	Anderson's Plurality.
San Miguel	970	762	1,732	208
R—Anderson's plurality				208

Weld County.

COUNTY.	W. N. Carleton (S).	Ulrich E. Madden (R).	Geo. J. Smith (D).	Robert G. Strong (D).	Harrison Teller (R).	James Thompson (S).
Weld	253	5,047	3,948	4,460	4,655	241
R—Madden's plurality over Strong.....						587
R—Teller's plurality over Strong.....						195

Prowers and Baca Counties.

COUNTIES.	John T. Adkins (D).	John S. Hasty (R).	Total	Hasty's Plurality.
Prowers	1,161	1,285	2,446	124
Baca	261	315	576	54
Totals	1,422	1,600	3,022	178
R—Hasty's Plurality				178

ABSTRACT OF VOTES CAST FOR REPRESENTATIVES AT THE GENERAL ELECTION—Continued.

Routt and Rio Blanco Counties.

COUNTIES.	Joseph B. Male (R).	L. Boyd Walbridge (D).	Total	Male's Plurality.	Walbridge's Plurality.
Routt	1,365	1,277	2,642	88	
Rio Blanco	365	520	885		155
Totals	1,730	1,797	3,527		
D—Walbridge's plurality					67

Grand, Summit and Jackson Counties.

COUNTIES.	Frank W. Murphy (R).	Lawrence M. Tovey (D).	Total	Murphy's Plurality.	Tovey's Plurality.
Grand	428	400	828	28	
Summit	361	595	956	...	234
Jackson	252	225	477	27	
Totals	1,041	1,220	2,261		
D—Tovey's plurality					179

Lincoln, Phillips, Yuma, Kit Carson and Cheyenne Counties.

COUNTIES.	John W. Cloyd (D).	Ferdinand F. Vogel (R).	J. P. Spelss	Charles W. Parker.	Total	Cloyd's Plurality.	Vogel's Plurality.
Lincoln	655	962	1,607	...	297
Phillips	484	614	1,098	...	130
Yuma	1,188	1,012	1	...	2,201	176	...
Kit Carson	758	1,127	...	3	1,888	...	369
Cheyenne	389	585	974	...	196
Totals	3,474	4,290	1	3	7,768		
R—Vogel's Plurality							816

ABSTRACT OF VOTES CAST FOR REPRESENTATIVES AT THE GENERAL ELECTION—Concluded.

Morgan, Logan, Washington and Sedgwick Counties.

COUNTIES.	H. Gilbert Nelson (D).	Cuthbert Parker (R).	Total.	Parker's Plurality.
Morgan	1,046	1,376	2,422	330
Logan	1,232	1,335	2,567	103
Washington	641	644	1,285	3
Sedgwick	448	559	1,007	111
Totals	3,367	3,914	7,281	547
R—Parker's plurality			547	

Pueblo County.

COUNTY.	Geo. M. Ashton (D).	Wilbur Bulette (R).	Sterling Cawfield (D).	W. V. Galliaher (S).	James P. Harbour (R).
Pueblo	7,481	5,458	7,390	298	5,419

Pueblo County.

COUNTY.	Chas. J. Leftwich (D).	Robert McFedries (R).	H. A. McIntyre (D).	Henry O. Morris (S).	Chas. E. Sullivan (R).
Pueblo.. ..	7,308	5,393	7,307	368	5,249
D—Ashton's plurality over Bulette.....				2,023	
D—Cawfield's plurality over Bulette.....				1,932	
D—Leftwich's plurality over Bulette.....				1,850	
D—McIntyre's plurality over Bulette.....				1,849	

Rio Grande County.

COUNTY.	James S. Campbell (R).	M. Millard Nelson (D).	Total	Campbell's Plurality.
Rio Grande	1,382	1,039	2,421	343
R—Campbell's plurality.....			343	

ABSTRACT OF VOTES CAST.

75

TABULATED STATEMENT OF VOTES CAST FOR THE OFFICE OF GOVERNOR FOR THE YEARS 1900-1910, INCLUSIVE.

1900.

D—James B. Orman.....	118,641
R—Frank C. Goudy.....	94,047
S. B. Hutchinson.....	843
DeWitt C. Copley.....	987
Jesse T. Pearson.....	421
James R. Wylie.....	3,695
Total vote.....	218,634
D—Orman's plurality.....	24,594

1902.

I. A. Knight.....	919
Frank W. Owens.....	6,403
R—James H. Peabody.....	87,684
John C. Provost.....	7,177
Otto A. Reinhardt.....	3,910
D—E. C. Stimson.....	80,727
Total vote.....	186,820
R—Peabody's plurality.....	6,957

1904.

R—James H. Peabody.....	113,754
D—Alva Adams.....	123,092
A. H. Floaten.....	2,593
I. A. Knight.....	279
James D. Merwin.....	325
Robert A. M. Wilson.....	3,023
Total vote.....	243,066
D—Adams' plurality.....	9,338

1906.

R—Henry A. Buchtel.....	92,602
D—Alva Adams.....	74,416
Ben B. Lindsey.....	18,014
William D. Haywood.....	16,015
Total vote.....	201,047
R—Buchtel's plurality.....	18,186

TABULATED STATEMENT OF VOTES CAST FOR THE OFFICE OF
GOVERNOR FOR THE YEARS 1900-1910, INCLUSIVE—Concluded.

1908.

D—John F. Shafroth.....	130,141
R—Jesse F. McDonald.....	118,953
H. C. Darrah.....	7,972
Harry L. Murray.....	6,314
Total vote.....	263,380
D—Shafroth's plurality.....	11,188

1910.

D—John F. Shafroth.....	115,627
R—John B. Stephen.....	97,648
Henry W. Pinkham.....	7,844
Phidelah Alonzo Rice.....	3,751
George Anderson.....	735
Total vote.....	225,605
D—Shafroth's plurality.....	17,979

SENATE RULES

TOGETHER WITH THE

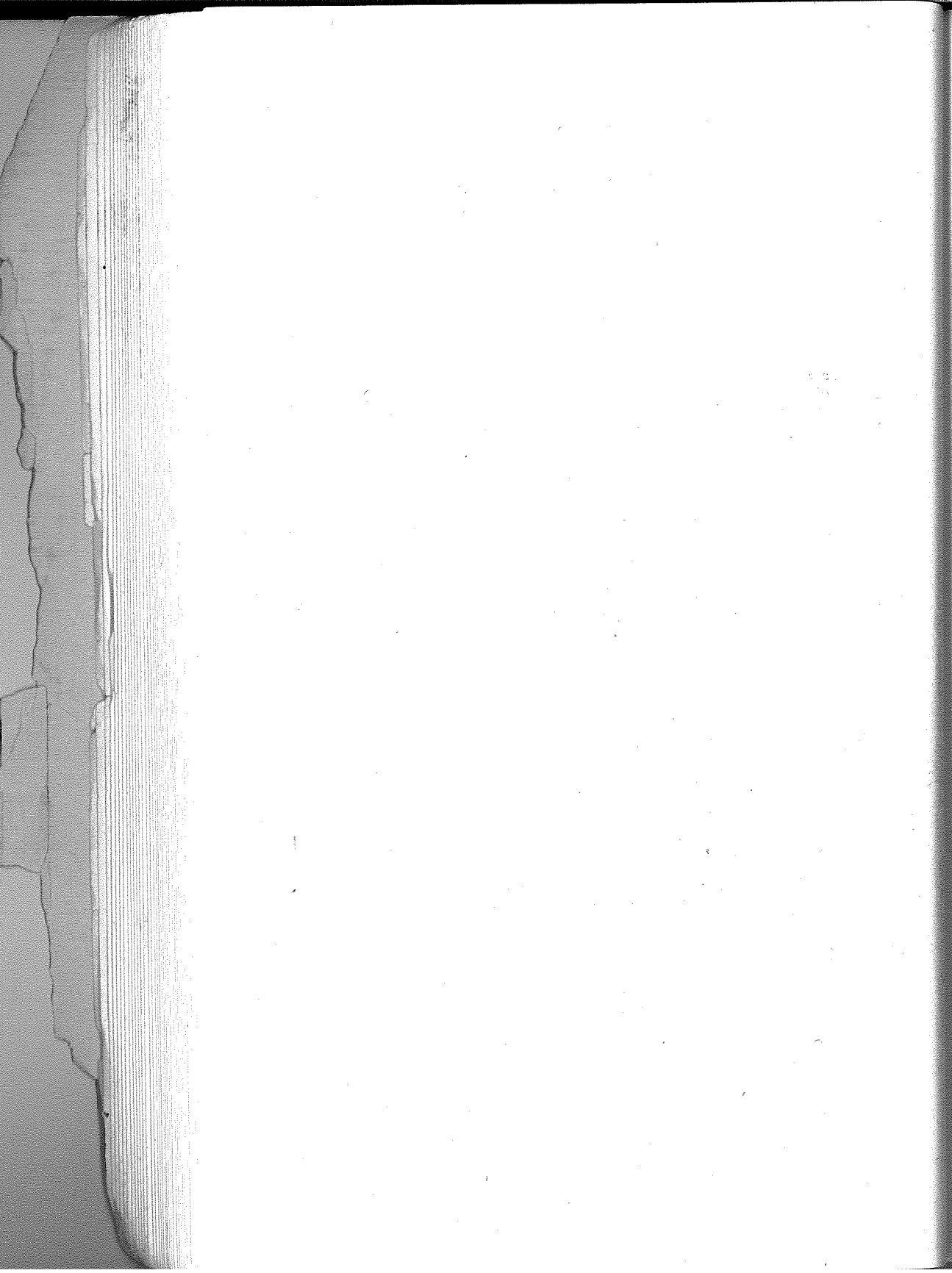
JOINT RULES

Governing the House and Senate and a List of the Standing
Committees of the Senate of the Eighteenth
General Assembly

COLORADO



1911



Rules of the Senate.

Rule I.—Of Calling to Order.

1. The stated hour of meeting, unless otherwise ordered, shall be 10 o'clock in the morning of each day.

2. The President (ex-officio the Lieutenant Governor), or, in his absence, the President pro tem., shall take the chair every day, promptly at the hour to which the Senate stands adjourned; shall call the Senate to order, and on the appearance of a quorum shall proceed to business.

3. The stated hour for the convening of the Senate having arrived, and the President and President pro tem. being absent, the eldest senior Senator present shall call the Senate to order, and shall preside until an active President shall have been elected, which election shall be the first business of the Senate.

Rule II.—Of the Acting President.

1. An acting President when elected shall continue to preside, with all the powers and privileges of the President, except that of signing bills and joint resolutions, until the President, or President pro tem. shall appear within the bar of the Senate, when he shall surrender the chair.

Rule III.—Of a Quorum.

1. A majority of all the Senators elected shall constitute a quorum; and whenever a less number than a quorum shall convene at a regular meeting and shall adjourn, the names of those present shall be entered on the journal.

2. Whenever a less number than a quorum shall convene at any regular meeting, they are empowered to send the Sergeant-at-Arms or any other person or persons, by them authorized, for any or all absent Senators; and the actual expense incurred thereby in each case shall be paid by the absentees, respectively, unless for a good and sufficient reason, they have been, or may be, excused by the Senate.

Rule IV.—Order of Business.

1. The Senate having been called to order at the hour to which it shall have adjourned, and a quorum being present, and after prayer by the Chaplain, the first order of business shall be

the reading of the journal of the preceding day, to the end that any mistakes therein may be corrected, and the journal approved.

2. After the reading and approval of the journal, the order of business shall be as follows:

First—Presentation of petitions and memorials.

Second—Introduction of resolutions.

Third—Introduction of bills. First reading—by title.

Fourth—Reports of standing committees.

Fifth—Reports of special committees.

Sixth—Consideration of resolutions.

Seventh—Third reading of bills.

Eighth—Messages from the House of Representatives.

Ninth—Communications from state officers.

Tenth—Messages from the Governor.

Eleventh—General orders.

3. No bill shall be made a special order without special order has been authorized by the affirmative vote of majority of all members elect; and in discussion of a motion to make a special order, which motion shall include only one bill, for which no other bill shall be substituted, no Senator shall speak more than once, nor longer than ten minutes, and a vote shall thereafter immediately be taken. Whenever any bill or other matter is made the special order for a particular day and hour, and the consideration thereof shall not be completed at that sitting, it shall retain its place as a special order for the same hour on the succeeding day. And when a special order is under consideration, it shall take precedence of any special order for a subsequent hour of the same day; but such subsequent special order may be taken up immediately after the previous special order has been disposed of.

4. When the Senate has proceeded to the general order of the day, no other business, unless it be a special order, shall be in order until the general orders have been disposed of, except by unanimous consent.

Rule V.—Of Motions.

1. No motion shall be debated until the same shall have been seconded and put by the chair, and, if desired by the presiding officer, or by any Senator, shall be reduced to writing, delivered at the Secretary's desk and read before the same shall be debatable.

2. Any motion or resolution may be withdrawn or modified by the mover at any time before a decision, amendment or ordering of the ayes and nays, except a motion to reconsider, which shall not be withdrawn without leave of the Senate.

3. When the question is under debate, the President shall receive no motion but to adjourn, to take a recess, to proceed to the consideration of the special order, to lay on the table, to close the debate at a specified time, to postpone to a day certain, to

commit, to amend, or to postpone indefinitely, and they shall take precedence in the order named.

4. No motion or proposition upon a subject different from that under consideration shall be admitted under color of amendment.

5. A motion to postpone to a day certain, or indefinitely, being decided, shall not be again allowed at the same stage of the bill or proposition; and if a bill or proposition be set for consideration on a certain day, it shall not be considered at an earlier day.

6. No motion shall be deemed in order to admit any person or persons whatsoever, other than a Senator, within the Senate Chamber to present any petition, memorial or address.

Rule VI.—Of Substitute Motions.

1. All so-called substitute motions and resolutions shall be considered as amendments only, and shall be subject to the rules relating thereto, except such matters as may be reported by committee.

Rule VII.—Of Questions of Order.

1. All questions of order shall be decided by the President without debate; such decision shall be subject to appeal to the Senate by any Senator, on which appeal no Senator shall speak more than once, unless by leave of the Senate; and the President, on such appeal, may speak in preference to Senators, rising from his seat for that purpose.

2. If a Senator be called to order for words spoken, the exceptional words spoken shall be immediately taken down in writing by the Secretary, that the President may be better enabled to judge of the matter.

3. If any Senator, in speaking or otherwise, transgress the rules of the Senate, the President shall, or any Senator may, call him to order; and the Senator called to order shall immediately take his seat, if required to do so by the President, until the question of order is decided. If the decision be in favor of the Senator called to order, he shall be at liberty to proceed; if otherwise, he shall not be permitted to proceed, in case any Senator object, without leave of the Senate.

Rule VIII.—Of Adjournment.

1. A motion to adjourn, to take a recess, shall always be in order, but being decided in the negative, shall not be again entertained unless some motion other than a call of the Senate or motion for recess shall have taken place.

Rule IX.—Of Division of Question.

1. A question containing two or more propositions, capable of division, shall be divided whenever desired by any Senator. A motion to strike out and insert shall be deemed divisible; but a motion to strike out being lost, shall neither preclude amendment, nor a motion to strike out and insert.

2. All amendments of the House of Representatives to a Senate bill, or other proposition, shall not be divisible.

Rule X.—Of Debate.

1. The following questions shall be decided without debate, to wit: To suspend the rules, to adjourn, to take a recess, to lay on the table, to take from the table, to go into committee of the whole on the orders of the day, all questions relating to the priority of business.

2. Debate may be closed at any time not less than one hour from the adoption of a motion to that effect, and upon a majority vote of the members-elect an hour may be fixed for a vote upon the pending measure. On either of these motions not more than ten minutes shall be allowed for debate, and no Senator shall speak more than three minutes; and no other motion shall be entertained until the motion to close debate, or to fix an hour for the vote on the pending question, shall have been determined.

Rule XI.—Of Filling Blanks.

1. On filling up blanks, the question shall first be taken on the largest sum, greatest number and most distant day.

Rule XII.—Of the President.

1. The President shall preserve order and decorum, but shall have no vote, except in case of a tie.

2. When two or more Senators rise at the same time, the President shall designate which of them shall be entitled to the floor; but preference should be given to a Senator who has not spoken on the subject under debate.

3. The President shall have the right, in the absence or inability of the President pro tem. to preside, to name any Senator to perform the duties of the chair temporarily, who shall be invested during such time with all the powers and privileges of the President, except that of signing bills and joint resolutions. But such appointment shall not extend beyond the time of the return of the President pro tem., and in no event shall such an appointment extend beyond an adjournment.

4. The President shall have the general direction of the Senate Chamber, and in case of any disturbance or disorderly conduct in the lobby or galleries, he shall have the power to order the same