

STATE OF COLORADO

Abstract of Votes Cast

AT THE

Primary Election

Held on the Eighth Day of September
A. D. 1914

AND AT THE

General Election

Held on Third Day of November.
A. D. 1914

FOR

United States Senators, Congressmen, and State,
Legislative and District Officers

ALSO THE

Proposed Constitutional Amendments
Initiated and Referred Measures

COMPILED FROM OFFICIAL RETURNS

BY

JOHN E. RAMER
Secretary of State

1915



DENVER, COLORADO

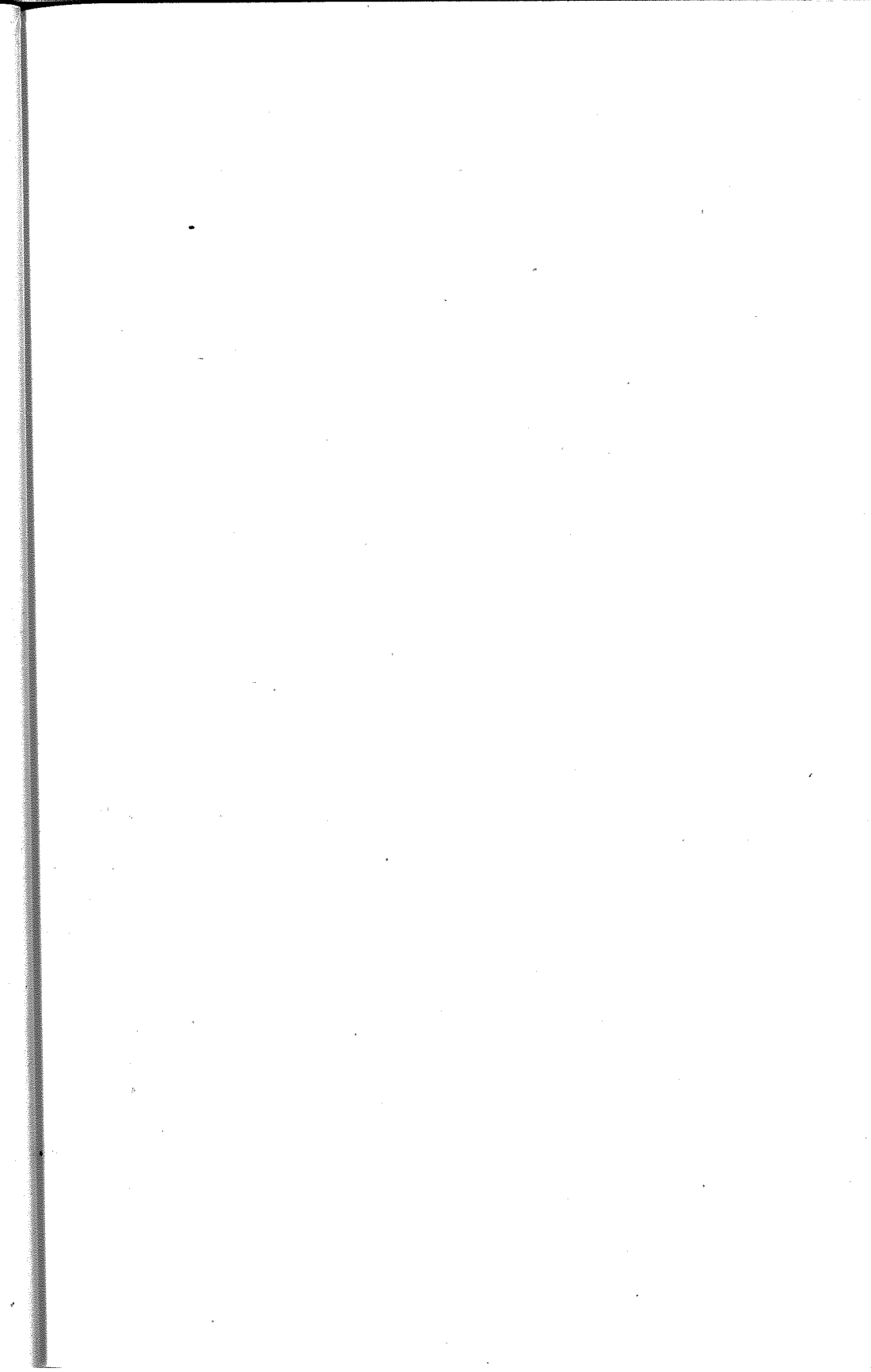
ABSTRACT OF VOTES CAST

ABSTRACT OF VOTES CAST AT A GENERAL ELECTION HELD ON
TUESDAY, NOVEMBER 3, A. D. 1914, FOR STATE SENATOR FROM
THE TWENTY-FIFTH SENATORIAL DISTRICT.

COUNTIES	John S. Hasty (Rep.)	M. M. Simpson (Dem.-Prog.)
Baca	594	510
Bent	907	826
Kiowa	573	665
Prowers	1,607	1,272
	<hr/>	<hr/>
	3,681	3,273
Hasty's majority		408

ABSTRACT OF VOTES CAST AT A GENERAL ELECTION HELD ON
TUESDAY, NOVEMBER 3, A. D. 1914, FOR STATE SENATOR FROM
THE TWENTY-SEVENTH SENATORIAL DISTRICT.

COUNTIES	W. H. Abbott (Prog.)	John F. Dickinson (Rep.)	William D. Reilly (Dem.)
Cheyenne	72	553	351
Douglas	41	556	608
Elbert	115	605	1,062
Kit Carson	437	735	615
Lincoln	123	949	929
	<hr/>	<hr/>	<hr/>
	788	3,398	3,565
Reilly over Dickinson			167



ABSTRACT OF VOTES CAST AT A GENERAL ELECTION HELD ON
TUESDAY, NOVEMBER 3, A. D. 1914, FOR REPRESENTATIVE IN
THE TWENTIETH GENERAL ASSEMBLY FROM THE CITY AND
COUNTY OF DENVER.

Joseph S. Baker, Progressive.....	14,191
Edward B. Bartholic, Socialist.....	3,359
George M. Bergen, No Ass'by.....	1,193
Morris Berkowitz, Socialist.....	3,143
Carroll M. Bills, Republican.....	25,320
Herman A. Bolster, No Ass'by.....	1,127
Rudolph Borchardt, Tax Payer.....	4,201
William T. Boyd, Progressive.....	7,350
Joseph B. Cobbs, No. Ass'by.....	1,447
Albert Gallatin Craig, Democrat.....	18,038
John F. Critchfield, Socialist.....	3,247
John Dietrich, Democrat.....	21,076
George B. Drake, Republican.....	25,388
Edward V. Dunklee, Democrat.....	23,142
James G. Edgeworth, Socialist.....	3,341
William F. Evans, Progressive.....	8,121
William Engelbert Frye, Progressive.....	7,468
Walter R. Garretson, Republican.....	17,998
James O. Garrett, Democrat.....	17,437
Harold G. Garwood, Republican.....	20,014
McLeod M. George, Progressive.....	6,405
John S. Gable, No Ass'by.....	1,223
Alby N. Gordon, Socialist.....	3,188
Randolph M. Hagerman, Republican.....	22,964
Robert Harris, Republican.....	22,216
Evangeline Heartz, Democrat.....	20,119
Axel E. Helme, No Ass'by.....	1,005
William W. Howland, Republican.....	21,264
Thomas M. Hyder, Democrat.....	15,239
John T. Joyce, Socialist.....	3,203
Jennie B. Kern, Socialist.....	2,841
Margaret W. Kessler, Progressive.....	6,719
Albert Kiefer, Socialist.....	3,146
Fred Lambert, No Ass'by.....	2,003
James Thomas Macey, Republican.....	16,992
Adrian Maguire, No Ass'by.....	2,272
Louise A. Maloney, Democrat.....	14,935

ABSTRACT OF VOTES CAST AT A GENERAL ELECTION HELD ON
TUESDAY, NOVEMBER 3, A. D. 1914, FOR REPRESENTATIVE IN
THE TWENTIETH GENERAL ASSEMBLY FROM THE CITY AND
COUNTY OF DENVER.—Continued.

Thomas F. McGovern, Democrat.....	16,656
William J. McPherson, Progressive.....	7,691
Rufus P. Means, Democrat.....	14,377
Schuyler C. Peck, Progressive.....	7,650
Burnett S. Pepper, Progressive.....	6,786
Leonard Ruehle, No Ass'by.....	1,668
Stephen W. Ryan, Democrat.....	16,279
John A. Rymer, Progressive.....	6,891
Edward M. Sabin, Republican.....	18,994
Benjamin J. Salmon, Democrat.....	17,547
Charles H. Schreiber, Progressive.....	12,706
William P. Simmington, Progressive.....	10,616
Jennie E. Smith, Socialist.....	3,310
Frank Springrose, No Ass'by.....	700
Edward W. Stuart, No Ass'by.....	991
Fred J. Taylor, No Ass'by.....	2,332
Frank D. Thompson, Republican.....	23,220
Thomas Tonge, Republican.....	19,614
Charles W. Varnum, Republican.....	17,082
Jesse Vetter, Socialist.....	3,602
John Redmond Williams, Democrat.....	17,866
Anton F. Willmer, Socialist.....	2,894
William Young, Socialist.....	3,275
Drake over Craig.....	7,350
Dunklee over Craig.....	5,104
Howland over Craig.....	3,226
Garwood over Craig.....	1,976
Bills over Craig.....	7,282
Hagerman over Craig.....	4,926
Dietrich over Craig.....	3,038
Tonge over Craig.....	1,576
Thompson over Craig.....	5,182
Harris over Craig.....	4,170
Heartz over Craig.....	2,081
Sabin over Craig.....	956

ABSTRACT OF VOTES CAST

ABSTRACT OF VOTES CAST AT A GENERAL ELECTION HELD ON TUESDAY, NOVEMBER 3, A. D. 1914, FOR REPRESENTATIVES IN THE TWENTIETH GENERAL ASSEMBLY, FROM THE COUNTY OF ADAMS.

COUNTY	James N. Counter (Dem.)	Samuel H. Morrow (Rep.-Prog.)
Adams	1,446	1,001
Counter's majority	445	

ABSTRACT OF VOTES CAST AT A GENERAL ELECTION HELD ON TUESDAY, NOVEMBER 3, A. D. 1914, FOR REPRESENTATIVES IN THE TWENTIETH GENERAL ASSEMBLY, FROM THE COUNTY OF ALAMOSA.

COUNTY	Robert M. Born (Dem.)	Perry Craig (Rep.-Prog.)
Alamosa	838	715
Born's majority	123	

ABSTRACT OF VOTES CAST AT A GENERAL ELECTION HELD ON TUESDAY, NOVEMBER 3, A. D. 1914, FOR REPRESENTATIVE IN THE TWENTIETH GENERAL ASSEMBLY FROM THE COUNTIES OF ARAPAHOE AND ELBERT.

COUNTIES	Frank Ford (Prog.)	Fred F. Hee (Dem.)	J. J. Kruse (Rep.)
Arapahoe	1,035	1,199	1,053
Elbert	156	535	1,084
	1,191	1,734	2,137

Kruse over Hee..... 403

ABSTRACT OF VOTES CAST AT A GENERAL ELECTION HELD ON TUESDAY, NOVEMBER 3, A. D. 1914, FOR REPRESENTATIVES IN THE TWENTIETH GENERAL ASSEMBLY, FROM THE COUNTY OF BOULDER. (TWO TO ELECT).

A. P. Ardourel, Democrat.....	4,435
L. E. Girard, Republican.....	3,750
Joseph Hurd, Democrat.....	2,994
R. L. Montgomery, Republican.....	4,023
Henry Stewart, Socialist.....	605
John C. Thompson, Socialist.....	635
Ardourel over Girard.....	685
Montgomery over Girard.....	273

ABSTRACT OF VOTES CAST

ABSTRACT OF VOTES CAST AT A GENERAL ELECTION HELD ON TUESDAY, NOVEMBER 3, A. D. 1914, FOR REPRESENTATIVE IN THE TWENTIETH GENERAL ASSEMBLY, FROM THE COUNTY OF CHAFFEE.

COUNTY	A. E. Wright, Jr. (Dem.)	Homer J. Brown (Soc.)	Edwin A. Van Camp (Citizen)
Chaffee	1,488	397	797
Wright over Van Camp.....			691

ABSTRACT OF VOTES CAST AT A GENERAL ELECTION HELD ON TUESDAY, NOVEMBER 3, A. D. 1914, FOR REPRESENTATIVE IN THE TWENTIETH GENERAL ASSEMBLY, FROM THE COUNTY OF CLEAR CREEK.

COUNTY	Frank Brady (Dem.)	Herman E. Crist (Rep.)
Clear Creek.....	743	991
Crist's majority		248

ABSTRACT OF VOTES CAST

ABSTRACT OF VOTES CAST AT A GENERAL ELECTION HELD ON TUESDAY, NOVEMBER 3, A. D. 1914, FOR REPRESENTATIVE IN THE TWENTIETH GENERAL ASSEMBLY, FROM THE COUNTY OF CONEJOS.

COUNTY	Celestino Garcia (Rep.)	Ricardo Gonzales (Dem.)
Conejos	1,404	989
Garcia's majority		415

ABSTRACT OF VOTES CAST AT A GENERAL ELECTION HELD ON TUESDAY, NOVEMBER 3, A. D. 1914, FOR REPRESENTATIVES IN THE TWENTIETH GENERAL ASSEMBLY FROM THE COUNTIES OF CROWLEY AND OTERO. (TWO TO ELECT).

COUNTIES	Reuben C. Inge (Rep.-Prog.)	Stephen F. Ilgenfritz (Dem.)	Orlando W. West (Dem.)	Chas. C. Wooldridge (Rep.-Prog.)
Crowley	615	598	507	831
Otero	2,829	1,850	2,694	2,327
	<hr/>	<hr/>	<hr/>	<hr/>
	3,444	2,448	3,201	3,158
Inge over Wooldridge.....				286
West over Wooldridge.....				43

ABSTRACT OF VOTES CAST

ABSTRACT OF VOTES CAST AT A GENERAL ELECTION HELD ON TUESDAY, NOVEMBER 3, A. D. 1914, FOR REPRESENTATIVE IN THE TWENTIETH GENERAL ASSEMBLY, FROM THE COUNTY OF DELTA.

COUNTY	Geo. W. Bruce (Dem.)	C. C. Hawkins (Prog.)	Jacob Keiser (Rep.)	F. J. Pearson (Soc.)
Delta	1,848	1,084	836	494
Bruce over Hawkins.....				764

ABSTRACT OF VOTES CAST AT A GENERAL ELECTION HELD ON TUESDAY, NOVEMBER 3, A. D. 1914, FOR REPRESENTATIVE IN THE TWENTIETH GENERAL ASSEMBLY, FROM THE COUNTY OF DOUGLAS.

COUNTY	Charles Shipman (Dem.)	Hugh Taylor (Rep.)
Douglas	577	680
Taylor's majority		103

ABSTRACT OF VOTES CAST AT A GENERAL ELECTION HELD ON TUESDAY, NOVEMBER 3, A. D. 1914, FOR REPRESENTATIVE IN THE TWENTIETH GENERAL ASSEMBLY, FROM THE COUNTY OF EAGLE.

COUNTY	James Dilts (Rep.)	Erlo E. Kennedy (Dem.)	R. W. Livers (Prog.)
Eagle	617	721	137
Kennedy over Dilts.....			104

ABSTRACT OF VOTES CAST AT A GENERAL ELECTION HELD ON TUESDAY, NOVEMBER 3, A. D. 1914, FOR REPRESENTATIVES IN THE TWENTIETH GENERAL ASSEMBLY, FROM THE COUNTY OF EL PASO. (THREE TO ELECT).

Jack Grant, Democrat.....	3,682
George B. Gould, Progressive.....	3,553
Lillian H. Kerr, Progressive.....	2,982
J. N. Pribble, Democrat.....	3,095
L. A. Puffer, Republican.....	5,686
M. M. Sinton, Democrat.....	4,575
P. B. Stewart, Republican.....	4,858
Geo. M. Taylor, Republican.....	4,766
Thomas E. Thomas, Progressive.....	3,691
F. D. Hahnenkratt, Socialist.....	721
Charles Edward Thomas Manning, Socialist.....	622
Frank D. Warren, Socialist.....	750
Puffer over Sinton.....	1,111
Stewart over Sinton.....	283
Taylor over Sinton.....	191

ABSTRACT OF VOTES CAST AT A GENERAL ELECTION HELD ON TUESDAY, NOVEMBER 3, A. D. 1914, FOR REPRESENTATIVE IN THE TWENTIETH GENERAL ASSEMBLY, FROM THE COUNTY OF FREMONT.

COUNTY	Allen Bell (Dem.)	Geo. E. Colgate (Rep.)	J. Homer Dickson (Prog.)	Genevieve Gould Battey (Soc.)
Fremont	2,214	2,454	430	358
Colgate over Bell.....			240	

ABSTRACT OF VOTES CAST

ABSTRACT OF VOTES CAST AT A GENERAL ELECTION HELD ON TUESDAY, NOVEMBER 3, A. D. 1914, FOR REPRESENTATIVE IN THE TWENTIETH GENERAL ASSEMBLY FROM THE COUNTIES OF GARFIELD AND RIO BLANCO.

COUNTIES	Willis S. Montgomery (Dem.)	John L. Noonan (Rep.)
Garfield	1,239	1,990
Rio Blanco	581	388
	<hr/>	<hr/>
	1,820	2,378
Noonan's majority.....		558

ABSTRACT OF VOTES CAST AT A GENERAL ELECTION HELD ON TUESDAY, NOVEMBER 3, A. D. 1914, FOR REPRESENTATIVE IN THE TWENTIETH GENERAL ASSEMBLY, FROM THE COUNTY OF GILPIN.

COUNTY	Henry C. Bolsinger (Dem.)	William L. Kirk (Prog.)	William C. Mathews (Rep.)
Gilpin	532	256	414
Bolsinger over Mathews.....			118

ABSTRACT OF VOTES CAST AT A GENERAL ELECTION HELD ON TUESDAY, NOVEMBER 3, A. D. 1914, FOR REPRESENTATIVE IN THE TWENTIETH GENERAL ASSEMBLY, FROM THE COUNTY OF GUNNISON.

COUNTY	W. Scott Humason (Rep.)	James A. McElroy (Dem.)	Lewis H. Easterly (Soc.)
Gunnison	1,117	741	449
Humason over McElroy.....			376

ABSTRACT OF VOTES CAST

ABSTRACT OF VOTES CAST AT A GENERAL ELECTION HELD ON TUESDAY, NOVEMBER 3, A. D. 1914, FOR REPRESENTATIVE IN THE TWENTIETH GENERAL ASSEMBLY FROM THE COUNTIES OF ARCHULETA, HINSDALE AND MINERAL.

COUNTIES	A. M. Collins (Rep.)	James J. O'Rourke (Dem.)	Owen McDermat (Soc.)
Archuleta	334	645	.. .
Hinsdale	128	122	.. .
Mineral	339	109	5
	801	876	5
O'Rourke over Collins.....			75

ABSTRACT OF VOTES CAST AT A GENERAL ELECTION HELD ON TUESDAY, NOVEMBER 3, A. D. 1914, FOR REPRESENTATIVE IN THE TWENTIETH GENERAL ASSEMBLY FROM THE COUNTIES OF HUERFANO AND COSTILLA.

COUNTIES	J. P. Campbell (Dem.-Prog.)	J. P. Gallegos (Rep.)
Huerfano	2,106	2,479
Costilla	517	680
	2,623	3,159
Gallegos' majority.....		536

ABSTRACT OF VOTES CAST

ABSTRACT OF VOTES CAST AT A GENERAL ELECTION HELD ON TUESDAY, NOVEMBER 3, A. D. 1914, FOR REPRESENTATIVE IN THE TWENTIETH GENERAL ASSEMBLY, FROM THE COUNTY OF JEFFERSON.

COUNTY	John Grattan (Prog.)	Wesley Staley (Dem.)	Charles C. Welch (Rep.)	D. B. Kirkman (Soc.)
Jefferson	562	2,283	1,956	257
Haley over Welch.....				327

ABSTRACT OF VOTES CAST AT A GENERAL ELECTION HELD ON TUESDAY, NOVEMBER 3, A. D. 1914, FOR REPRESENTATIVE IN THE TWENTIETH GENERAL ASSEMBLY FROM THE COUNTIES OF KIOWA AND BENT.

COUNTIES	Eoon Best (Dem.)	W. A. Hasty (Rep.-Prog.)
Kiowa	889	506
Bent	809	939
	1,698	1,445
Best's majority		253

ABSTRACT OF VOTES CAST AT A GENERAL ELECTION HELD ON TUESDAY, NOVEMBER 3, A. D. 1914, FOR REPRESENTATIVE IN THE TWENTIETH GENERAL ASSEMBLY, FROM THE COUNTY OF LAKE.

COUNTY	Winters Morrell (Rep.-Prog.)	Fred J. McNair (Dem.)	E. W. McClintock (Soc.)
Lake	1,415	1,873	323
McNair over Morrell.....			458

ABSTRACT OF VOTES CAST

ABSTRACT OF VOTES CAST AT A GENERAL ELECTION HELD ON TUESDAY, NOVEMBER 3, A. D. 1914, FOR REPRESENTATIVE IN THE TWENTIETH GENERAL ASSEMBLY, FROM THE COUNTY OF LA PLATA.

COUNTY	Wm. C. Jemmlson (Dem.)	Jno. H. McDevitt, Jr. (Rep.)
La Plata	1,259	1,973
McDevitt, Jr.'s majority		714

ABSTRACT OF VOTES CAST AT A GENERAL ELECTION HELD ON TUESDAY, NOVEMBER 3, A. D. 1914, FOR REPRESENTATIVE IN THE TWENTIETH GENERAL ASSEMBLY, FROM THE COUNTY OF LARIMER.

COUNTY	P. D. Nelson (Rep.-Prog.)	Abram C. Van Galder (Dem.)	Clyde Karnes (Soc.)
Larimer	3,287	2,411	452
Nelson over Van Galder			876

ABSTRACT OF VOTES CAST AT A GENERAL ELECTION HELD ON TUESDAY, NOVEMBER 3, A. D. 1914, FOR REPRESENTATIVES IN THE TWENTIETH GENERAL ASSEMBLY, FROM THE COUNTY OF LAS ANIMAS. (TWO TO ELECT).

COUNTY	John Mayer (Rep.)	F. E. Nelson (Dem.)	J. B. Proctor (Prog.)	H. A. Schmidt (Rep.)	Meliton R. Vasquez (Dem.)	Callie Harper (Soc.)	F. B. McGregor (Soc.)
Las Animas...	4,228	3,793	366	3,905	3,522	323	297
Mayer over Nelson						435	
Schmidt over Nelson						112	

ABSTRACT OF VOTES CAST

ABSTRACT OF VOTES CAST AT A GENERAL ELECTION HELD ON TUESDAY, NOVEMBER 3, A. D. 1914, FOR REPRESENTATIVE IN THE TWENTIETH GENERAL ASSEMBLY FROM THE COUNTIES OF LINCOLN, KIT CARSON AND CHEYENNE.

COUNTIES	John M. Newell (Dem.)	Clarence M. Smith (Prog.)	F. H. Spencer (Rep.)
Lincoln	928	195	823
Kit Carson	653	512	597
Cheyenne	241	144	663
	<hr/>	<hr/>	<hr/>
	1,822	851	2,083
Spencer over Newell.....		261	

ABSTRACT OF VOTES CAST AT A GENERAL ELECTION HELD ON TUESDAY, NOVEMBER 3, A. D. 1914, FOR REPRESENTATIVE IN THE TWENTIETH GENERAL ASSEMBLY FROM THE COUNTIES OF LOGAN AND SEDGWICK.

COUNTIES	G. Fosdick (Dem.)	John C. Scott (Rep.-Prog.)
Logan	1,252	1,891
Sedgwick	325	554
	<hr/>	<hr/>
	1,577	2,445
Scott's majority	868	

ABSTRACT OF VOTES CAST

ABSTRACT OF VOTES CAST AT A GENERAL ELECTION HELD ON TUESDAY, NOVEMBER 3, A. D. 1914, FOR REPRESENTATIVE IN THE TWENTIETH GENERAL ASSEMBLY, FROM THE COUNTY OF MESA.

COUNTY	Laura S. Johnson (Prog.)	J. M. Kinard (Rep.)	William M. Porter (Dem.)	S. B. Hutchinson (Soc.)
Mesa	1,044	1,503	2,441	1,077
Porter over Kinard.....				938

ABSTRACT OF VOTES CAST AT A GENERAL ELECTION HELD ON TUESDAY, NOVEMBER 3, A. D. 1914, FOR REPRESENTATIVE IN THE TWENTIETH GENERAL ASSEMBLY FROM THE COUNTIES OF MONTEZUMA AND DOLORES.

COUNTIES	S. C. Green (Rep.)	William I. Myler (Dem.)
Montezuma	923	795
Dolores	76	170
	999	965
Green's majority		34

ABSTRACT OF VOTES CAST AT A GENERAL ELECTION HELD ON TUESDAY, NOVEMBER 3, A. D. 1914, FOR REPRESENTATIVE IN THE TWENTIETH GENERAL ASSEMBLY, FROM THE COUNTY OF MONTROSE.

COUNTY	C. E. Adams (Rep.)	W. J. Horton (Dem.)	Wm. K. Taptan (Soc.)
Montrose	1,534	1,885	424
Horton over Adams.....			351

ABSTRACT OF VOTES CAST

ABSTRACT OF VOTES CAST AT A GENERAL ELECTION HELD ON TUESDAY, NOVEMBER 3, A. D. 1914, FOR REPRESENTATIVE IN THE TWENTIETH GENERAL ASSEMBLY FROM THE COUNTIES OF MORGAN AND WASHINGTON.

COUNTIES	Ralph F. Drennan (Prog.)	Adolph Brockman (Dem.)	Mark B. Gill (Rep.)	Henry W. Sweetland (Soc.)
Morgan	691	755	1,302	217
Washington	264	677	813	102
	<hr/>	<hr/>	<hr/>	<hr/>
	955	1,432	2,115	319
Gill over Brockman.....				683

ABSTRACT OF VOTES CAST AT A GENERAL ELECTION HELD ON TUESDAY, NOVEMBER 3, A. D. 1914, FOR REPRESENTATIVE IN THE TWENTIETH GENERAL ASSEMBLY, FROM THE COUNTY OF OURAY.

COUNTY	B. H. DuPraw (Dem.)	Robt. K. Humphrey (Rep.)
Ouray	842	579
DuPraw's majority	263	

ABSTRACT OF VOTES CAST

ABSTRACT OF VOTES CAST AT A GENERAL ELECTION HELD ON TUESDAY, NOVEMBER 3, A. D. 1914, FOR REPRESENTATIVE IN THE TWENTIETH GENERAL ASSEMBLY FROM THE COUNTIES OF PHILLIPS AND YUMA.

COUNTIES	Joseph B. Campbell (Dem.)	Chas. E. Damewood (Rep.-Prog.)
Phillips	469	595
Yuma	1,207	1,374
Totals.....	1,676	1,969
Damewood's majority		293

ABSTRACT OF VOTES CAST AT A GENERAL ELECTION HELD ON TUESDAY, NOVEMBER 3, A. D. 1914, FOR REPRESENTATIVE IN THE TWENTIETH GENERAL ASSEMBLY, FROM THE COUNTY OF PITKIN.

COUNTY	Thomas Anson (Prog.)	Charles Dalley (Dem.)	J. W. Deane (Rep.)	J. Edw. Turner (Soc.)
Pitkin	240	503	319	172
Dalley over Deane.....				184

ABSTRACT OF VOTES CAST

ABSTRACT OF VOTES CAST AT A GENERAL ELECTION HELD ON TUESDAY, NOVEMBER 3, A. D. 1914, FOR REPRESENTATIVE IN THE TWENTIETH GENERAL ASSEMBLY FROM THE COUNTIES OF PROWERS AND BACA.

COUNTIES	Evan R. Jones (Dem.-Prog.)	Ray McGrath (Rep.)
Baca	512	581
Prowers	1,121	1,623
Totals.....	1,633	2,204
McGrath's majority	571	

ABSTRACT OF VOTES CAST AT A GENERAL ELECTION HELD ON TUESDAY, NOVEMBER 3, A. D. 1914, FOR REPRESENTATIVES IN THE TWENTIETH GENERAL ASSEMBLY, FROM THE COUNTY OF PUEBLO. (FOUR TO ELECT).

A. S. Andrew, Republican.....	7,862
D. C. Cook, Socialist.....	1,034
P. C. Dunlap, Democratic.....	6,303
Hallet C. Gallup, Democratic.....	6,192
F. L. Higgins, Democratic.....	5,924
David W. Jones, Republican.....	6,237
C. M. Kohnman, Socialist.....	1,328
J. J. Laurenry, Progressive.....	268
D. P. McGrew, Socialist.....	818
J. M. Sare, Democratic.....	6,116
F. M. Stokes, Republican.....	6,706
F. E. Wallace, Republican.....	7,308
Mrs. Love Westfall, Socialist	954
J. U. Wilkins, Democratic	370
Andrew over Jones.....	1,625
Wallace over Jones.....	1,071
Stokes over Jones.....	469
Dunlap over Jones.....	66

ABSTRACT OF VOTES CAST AT A GENERAL ELECTION HELD ON TUESDAY, NOVEMBER 3, A. D. 1914, FOR REPRESENTATIVE IN THE TWENTIETH GENERAL ASSEMBLY, FROM THE COUNTY OF RIO GRANDE.

COUNTY	Thomas W. Carr (Dem.-Ind.)	August J. Weiss (Rep.-Law.)
Rio Grande	833	1,227
Weiss' majority	394	

ABSTRACT OF VOTES CAST AT A GENERAL ELECTION HELD ON TUESDAY, NOVEMBER 3, A. D. 1914, FOR REPRESENTATIVE IN THE TWENTIETH GENERAL ASSEMBLY FROM THE COUNTIES OF ROUTT AND MOFFAT.

COUNTIES	Horace C. Dodge (Rep.)	Robert E. Norvell (Dem.)
Moffat	356	446
Routt	879	1,407
Totals.....	1,235	1,853
Norvell's majority	618	

ABSTRACT OF VOTES CAST

ABSTRACT OF VOTES CAST AT A GENERAL ELECTION HELD ON TUESDAY, NOVEMBER 3, A. D. 1914, FOR REPRESENTATIVE IN THE TWENTIETH GENERAL ASSEMBLY FROM THE COUNTIES OF SAGUACHE AND CUSTER.

COUNTIES	W. Scott Carroll (Rep.)	Carl L. Marold (Dem.)
Custer	371	475
Saguache	879	860
Totals.....	1,250	1,335
Marold's majority	85	

ABSTRACT OF VOTES CAST AT A GENERAL ELECTION HELD ON TUESDAY, NOVEMBER 3, A. D. 1914, FOR REPRESENTATIVE IN THE TWENTIETH GENERAL ASSEMBLY, FROM THE COUNTY OF SAN JUAN.

COUNTIES	John S. Fox (Dem.)	Henry Langhurst (Soc.)	J. A. McCrimmon (Rep.-Prog.)
San Juan	494	94	326
Fox over McCrimmon.....		168	

ABSTRACT OF VOTES CAST

ABSTRACT OF VOTES CAST AT A GENERAL ELECTION HELD ON TUESDAY, NOVEMBER 3, A. D. 1914, FOR REPRESENTATIVE IN THE TWENTIETH GENERAL ASSEMBLY, FROM THE COUNTY OF SAN MIGUEL.

COUNTIES	W. H. Doyle (Dem.)	W. R. Vanderveer (Rep.)	Albert T. Woods (Ind.)
San Miguel	896	705	327
Doyle over Vanderveer.....		191	

ABSTRACT OF VOTES CAST AT A GENERAL ELECTION HELD ON TUESDAY, NOVEMBER 3, A. D. 1914, FOR REPRESENTATIVE IN THE TWENTIETH GENERAL ASSEMBLY FROM THE COUNTIES OF SUMMIT, GRAND AND JACKSON.

COUNTIES	St. J. P. Swyers Fincher (Dem.)	O. K. Gaymon (Rep.)
Grand	467	411
Jackson	212	183
Summit	482	416
Totals.....	1,161	1,010
Fincher's majority	151	

ABSTRACT OF VOTES CAST

ABSTRACT OF VOTES CAST AT A GENERAL ELECTION HELD ON TUESDAY, NOVEMBER 3, A. D. 1914, FOR REPRESENTATIVES IN THE TWENTIETH GENERAL ASSEMBLY FROM THE COUNTIES OF TELLER AND PARK. (TWO TO ELECT).

COUNTIES	W. L. Baker (Soc.)	W. A. Harrison (Rep.-Prog.)	Clinton E. Roberts (Dem.)	John H. White (Rep.-Prog.)	Emery R. Young (Dem.)
Park	45	344	367	312	356
Teller	530	1,673	2,403	2,270	2,047
Totals.....	575	2,017	2,770	2,582	2,403
Roberts over Young.....				367	
White over Young.....				179	

ABSTRACT OF VOTES CAST AT A GENERAL ELECTION HELD ON TUESDAY, NOVEMBER 3, A. D. 1914, FOR REPRESENTATIVES IN THE TWENTIETH GENERAL ASSEMBLY, FROM THE COUNTY OF WELD. (TWO TO ELECT).

Leonard Burch, Progressive	1,244
William K. Gilchrist, Republican	4,563
C. R. Graves, Republican	4,156
John A. Hicks, Democratic-Prohibition	4,059
F. H. Hubert, Socialist.....	497
J. R. McCall, Socialist	519
G. W. McMurray, Progressive-Prohibition	1,475
Charles T. Philp, Democratic	3,503
Gilcrest over Hicks.....	504
Graves over Hicks.....	97

ABSTRACT OF VOTES CAST AT A GENERAL ELECTION HELD ON
TUESDAY, NOVEMBER 3, A. D. 1914, FOR UNITED STATES SENATOR.

COUNTIES	Benj. Griffith (Prog)	J. C. Griffiths (Soc.)	George J. Kindel (K. C. E.)	Charles S. Thomas (Dem.)	Hubert Work (Rep.)
Adams	284	135	219	1,184	702
Alamosa	107	161	38	627	579
Arapahoe	642	220	298	1,154	1,125
Archuleta	32	39	15	409	432
Baca	67	103	5	441	456
Bent	150	43	22	711	746
Boulder	655	583	236	4,024	4,315
Chaffee	173	262	105	1,259	986
Cheyenne	88	95	17	346	438
Clear Creek.....	58	52	92	766	640
Conejos	34	26	47	590	1,163
Costilla	31	38	13	293	688
Crowley	81	51	22	570	719
Custer	31	28	18	413	364
Delta	817	459	155	1,560	1,322
Denver	9,983	2,683	6,249	25,953	20,500
Dolores	28	37	10	131	31
Douglas	44	34	28	483	607
Eagle	142	60	61	608	518
Elbert	115	101	56	691	789
El Paso	3,149	704	198	5,086	5,216
Fremont	525	346	124	2,265	2,440
Garfield	304	291	135	1,479	1,188
Gilpin	43	45	57	569	403
Grand	31	29	61	357	393
Gunnison	119	298	66	918	820
Hinsdale	6	22	1	117	107
Huerfano	87	26	19	2,040	2,479
Jackson	6	6	37	148	205
Jefferson	363	247	405	2,104	2,064

ABSTRACT OF VOTES CAST AT A GENERAL ELECTION HELD ON
TUESDAY, NOVEMBER 3, A. D. 1914, FOR UNITED STATES SENATOR.
Continued.

COUNTIES	Ben. Griffith (Prog.)	J. C. Griffiths (Soc.)	George J. Kindel (K. C. E.)	Charles S. Thomas (Dem.)	Hubert Work (Rep.)
Kiowa	93	70	4	583	517
Kit Carson	234	183	21	675	706
Lake	378	288	158	1,800	1,281
La Plata	159	241	88	1,622	1,036
Larimer	543	401	154	2,597	2,901
Las Animas	387	268	129	4,011	4,315
Lincoln	108	91	28	813	957
Logan	241	183	43	1,238	1,490
Mesa	2,015	879	156	2,228	1,106
Mineral	9	43	8	194	164
Moffat	53	40	25	335	360
Montezuma	77	97	33	930	419
Montrose	491	394	90	1,466	1,373
Morgan	344	133	91	777	1,698
Otero	233	239	49	2,627	2,797
Ouray	99	120	28	576	545
Park	38	46	52	432	366
Phillips	128	61	18	379	515
Pitkin	72	151	62	633	241
Prowers	310	163	54	1,025	1,322
Pueblo	412	741	162	5,943	8,437
Rio Blanco	50	27	18	430	413
Rio Grande	66	54	30	865	985
Routt	129	160	116	1,092	841
Saguache	68	83	23	757	700
San Juan	49	95	27	438	244
San Miguel	19	119	63	930	646
Sedgwick	173	39	24	252	458
Summit	60	42	122	441	205

ABSTRACT OF VOTES CAST

103

COUNTY	Benj. Griffith (Prog.)	J. C. Griffiths (Soc.)	George J. Kindel (K. C. E.)	Charles S. Thomas (Dem.)	Hubert Work (Rep.)
Teller	414	395	182	2,685	1,600
Washington	151	113	42	663	866
Weld	1,091	480	474	4,235	5,543
Yuma	183	280	50	1,069	1,246
	<hr/>	<hr/>	<hr/>	<hr/>	<hr/>
	27,072	13,943	11,433	102,037	98,728

ABSTRACT OF VOTES CAST AT A GENERAL ELECTION HELD ON TUESDAY, NOVEMBER 3, A. D. 1914, FOR REPRESENTATIVE IN THE SIXTY-FOURTH CONGRESS FOR FIRST CONGRESSIONAL DISTRICT.

COUNTY	Ben. Blumenberg (Soc.)	Benj. C. Hilliard (Dem.)	Archibald A. Lee (Prog.)	Horace Phelps (Rep.)	A. W. Rucker (Wh. Ind.)
Denver	2,612	26,169	8,729	21,569	5,445