

STATE OF COLORADO

# Abstract of Votes Cast

AT THE

## Primary Election

Held on the Eighth Day of September  
A. D. 1914

AND AT THE

## General Election

Held on Third Day of November.  
A. D. 1914

FOR

United States Senators, Congressmen, and State,  
Legislative and District Officers

ALSO THE

Proposed Constitutional Amendments  
Initiated and Referred Measures

COMPILED FROM OFFICIAL RETURNS

BY

JOHN E. RAMER  
Secretary of State

1915



DENVER, COLORADO

ABSTRACT OF VOTES CAST

ABSTRACT OF VOTES CAST AT A GENERAL ELECTION HELD ON TUESDAY, NOVEMBER 3, A. D. 1914, FOR STATE SENATOR FROM THE SIXTEENTH SENATORIAL DISTRICT.

COUNTY	Erman W. Kluge (Dem.)	Avery C. Newton (Prog.)	F. Barnard Welsh (Rep.)	E. M. Cline (Soc.)
Mesa .....	2,522	1,543	1,375	929
Kluge over Newton.....				979

ABSTRACT OF VOTES CAST AT A GENERAL ELECTION HELD ON TUESDAY, NOVEMBER 3, A. D. 1914, FOR STATE SENATOR FROM THE SEVENTEENTH SENATORIAL DISTRICT.

COUNTIES	Fred Schermerhorn (Dem.)	S. Wonder (Rep.)
Dolores .....	141	65
Montrose .....	1,755	1,728
San Miguel .....	943	810
	<hr/>	<hr/>
	2,839	2,603
Schermerhorn's majority .....		236

ABSTRACT OF VOTES CAST

ABSTRACT OF VOTES CAST AT A GENERAL ELECTION HELD ON TUESDAY, NOVEMBER 3, A. D. 1914, FOR STATE SENATOR FROM THE EIGHTEENTH SENATORIAL DISTRICT.

COUNTIES	Herbert E. Curran (Rep.)	John H. Slattery (Dem.)
Archuleta .....	453	464
Hinsdale .....	127	115
Ouray .....	781	519
San Juan .....	436	433
	<hr/>	<hr/>
	1,797	1,531
Curran's majority .....		266

ABSTRACT OF VOTES CAST AT A GENERAL ELECTION HELD ON TUESDAY, NOVEMBER 3, A. D. 1914, FOR STATE SENATOR FROM THE TWENTIETH SENATORIAL DISTRICT.

COUNTIES	George Lewis (Dem.)	Melville B. Rapp (Rep.-Prog.)	W. B. Butler (Soc.)
Park .....	475	367	48
Teller .....	3,406	1,459	437
	<hr/>	<hr/>	<hr/>
	3,881	1,826	485
Lewis over Rapp .....			2,055

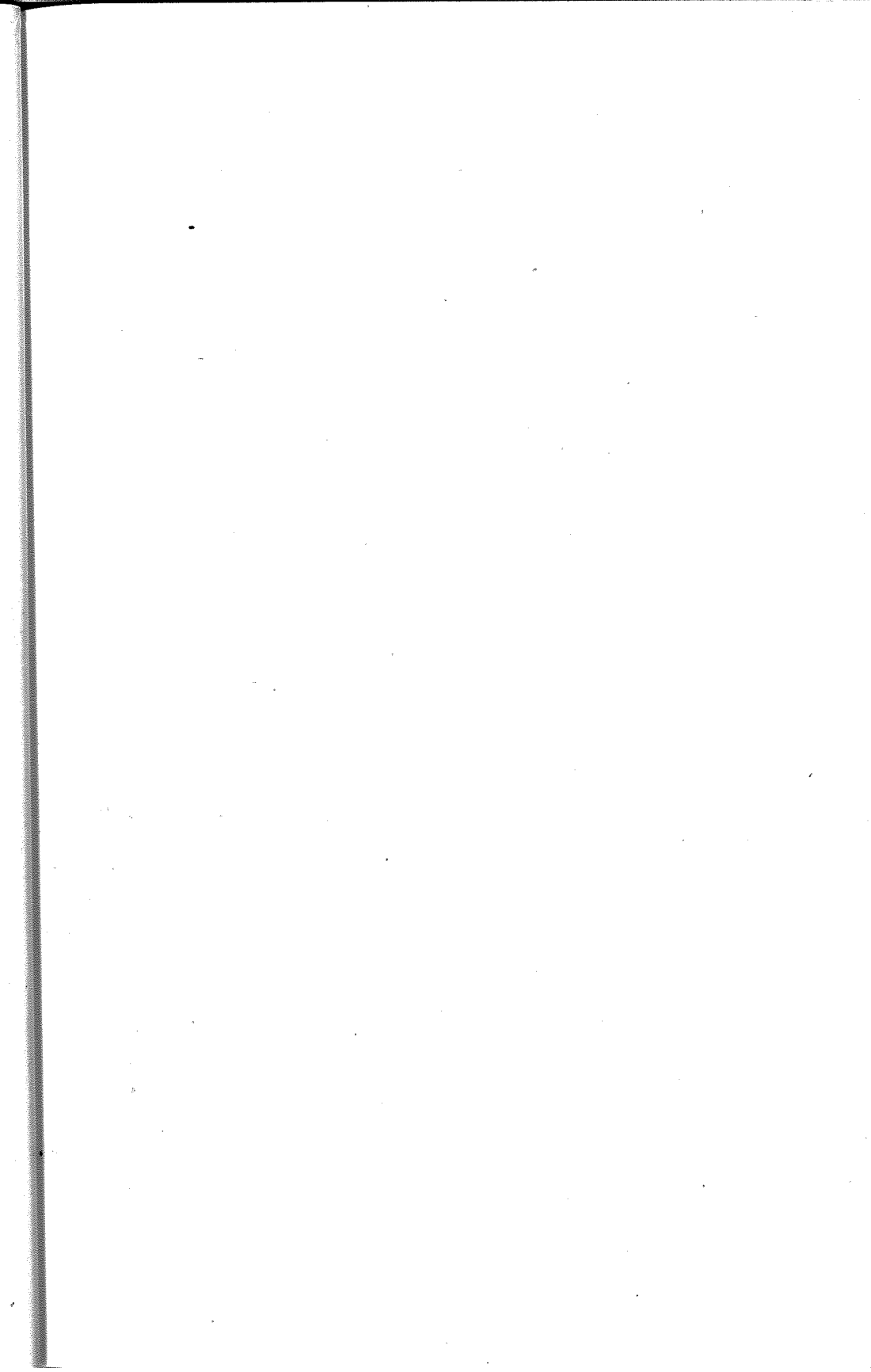
## ABSTRACT OF VOTES CAST

ABSTRACT OF VOTES CAST AT A GENERAL ELECTION HELD ON  
TUESDAY, NOVEMBER 3, A. D. 1914, FOR STATE SENATOR FROM  
THE TWENTY-FIFTH SENATORIAL DISTRICT.

COUNTIES	John S. Hasty (Rep.)	M. M. Simpson (Dem.-Prog.)
Baca .....	594	510
Bent .....	907	826
Kiowa .....	573	665
Prowers .....	1,607	1,272
	<hr/>	<hr/>
	3,681	3,273
Hasty's majority .....		408

ABSTRACT OF VOTES CAST AT A GENERAL ELECTION HELD ON  
TUESDAY, NOVEMBER 3, A. D. 1914, FOR STATE SENATOR FROM  
THE TWENTY-SEVENTH SENATORIAL DISTRICT.

COUNTIES	W. H. Abbott (Prog.)	John F. Dickinson (Rep.)	William D. Reilly (Dem.)
Cheyenne .....	72	553	351
Douglas .....	41	556	608
Elbert .....	115	605	1,062
Kit Carson .....	437	735	615
Lincoln .....	123	949	929
	<hr/>	<hr/>	<hr/>
	788	3,398	3,565
Reilly over Dickinson .....			167



ABSTRACT OF VOTES CAST AT A GENERAL ELECTION HELD ON  
TUESDAY, NOVEMBER 3, A. D. 1914, FOR REPRESENTATIVE IN  
THE TWENTIETH GENERAL ASSEMBLY FROM THE CITY AND  
COUNTY OF DENVER.

Joseph S. Baker, Progressive.....	14,191
Edward B. Bartholic, Socialist.....	3,359
George M. Bergen, No Ass'by.....	1,193
Morris Berkowitz, Socialist.....	3,143
Carroll M. Bills, Republican.....	25,320
Herman A. Bolster, No Ass'by.....	1,127
Rudolph Borchardt, Tax Payer.....	4,201
William T. Boyd, Progressive.....	7,350
Joseph B. Cobbs, No. Ass'by.....	1,447
Albert Gallatin Craig, Democrat.....	18,038
John F. Critchfield, Socialist.....	3,247
John Dietrich, Democrat.....	21,076
George B. Drake, Republican.....	25,388
Edward V. Dunklee, Democrat.....	23,142
James G. Edgeworth, Socialist.....	3,341
William F. Evans, Progressive.....	8,121
William Engelbert Frye, Progressive.....	7,468
Walter R. Garretson, Republican.....	17,998
James O. Garrett, Democrat.....	17,437
Harold G. Garwood, Republican.....	20,014
McLeod M. George, Progressive.....	6,405
John S. Gable, No Ass'by.....	1,223
Alby N. Gordon, Socialist.....	3,188
Randolph M. Hagerman, Republican.....	22,964
Robert Harris, Republican.....	22,216
Evangeline Heartz, Democrat.....	20,119
Axel E. Helme, No Ass'by.....	1,005
William W. Howland, Republican.....	21,264
Thomas M. Hyder, Democrat.....	15,239
John T. Joyce, Socialist.....	3,203
Jennie B. Kern, Socialist.....	2,841
Margaret W. Kessler, Progressive.....	6,719
Albert Kiefer, Socialist.....	3,146
Fred Lambert, No Ass'by.....	2,003
James Thomas Macey, Republican.....	16,992
Adrian Maguire, No Ass'by.....	2,272
Louise A. Maloney, Democrat.....	14,935

ABSTRACT OF VOTES CAST AT A GENERAL ELECTION HELD ON  
TUESDAY, NOVEMBER 3, A. D. 1914, FOR REPRESENTATIVE IN  
THE TWENTIETH GENERAL ASSEMBLY FROM THE CITY AND  
COUNTY OF DENVER.—Continued.

Thomas F. McGovern, Democrat.....	16,656
William J. McPherson, Progressive.....	7,691
Rufus P. Means, Democrat.....	14,377
Schuyler C. Peck, Progressive.....	7,650
Burnett S. Pepper, Progressive.....	6,786
Leonard Ruehle, No Ass'by.....	1,668
Stephen W. Ryan, Democrat.....	16,279
John A. Rymer, Progressive.....	6,891
Edward M. Sabin, Republican.....	18,994
Benjamin J. Salmon, Democrat.....	17,547
Charles H. Schreiber, Progressive.....	12,706
William P. Simmington, Progressive.....	10,616
Jennie E. Smith, Socialist.....	3,310
Frank Springrose, No Ass'by.....	700
Edward W. Stuart, No Ass'by.....	991
Fred J. Taylor, No Ass'by.....	2,332
Frank D. Thompson, Republican.....	23,220
Thomas Tonge, Republican.....	19,614
Charles W. Varnum, Republican.....	17,082
Jesse Vetter, Socialist.....	3,602
John Redmond Williams, Democrat.....	17,866
Anton F. Willmer, Socialist.....	2,894
William Young, Socialist.....	3,275
Drake over Craig.....	7,350
Dunklee over Craig.....	5,104
Howland over Craig.....	3,226
Garwood over Craig.....	1,976
Bills over Craig.....	7,282
Hagerman over Craig.....	4,926
Dietrich over Craig.....	3,038
Tonge over Craig.....	1,576
Thompson over Craig.....	5,182
Harris over Craig.....	4,170
Heartz over Craig.....	2,081
Sabin over Craig.....	956

## ABSTRACT OF VOTES CAST

ABSTRACT OF VOTES CAST AT A GENERAL ELECTION HELD ON TUESDAY, NOVEMBER 3, A. D. 1914, FOR REPRESENTATIVES IN THE TWENTIETH GENERAL ASSEMBLY, FROM THE COUNTY OF ADAMS.

COUNTY	James N. Counter (Dem.)	Samuel H. Morrow (Rep.-Prog.)
Adams .....	1,446	1,001
Counter's majority .....	445	

ABSTRACT OF VOTES CAST AT A GENERAL ELECTION HELD ON TUESDAY, NOVEMBER 3, A. D. 1914, FOR REPRESENTATIVES IN THE TWENTIETH GENERAL ASSEMBLY, FROM THE COUNTY OF ALAMOSA.

COUNTY	Robert M. Born (Dem.)	Perry Craig (Rep.-Prog.)
Alamosa .....	838	715
Born's majority .....	123	



ABSTRACT OF VOTES CAST AT A GENERAL ELECTION HELD ON TUESDAY, NOVEMBER 3, A. D. 1914, FOR REPRESENTATIVE IN THE TWENTIETH GENERAL ASSEMBLY FROM THE COUNTIES OF ARAPAHOE AND ELBERT.

COUNTIES	Frank Ford (Prog.)	Fred F. Hee (Dem.)	J. J. Kruse (Rep.)
Arapahoe .....	1,035	1,199	1,053
Elbert .....	156	535	1,084
	<hr/>	<hr/>	<hr/>
	1,191	1,734	2,137

Kruse over Hee..... 403

ABSTRACT OF VOTES CAST AT A GENERAL ELECTION HELD ON TUESDAY, NOVEMBER 3, A. D. 1914, FOR REPRESENTATIVES IN THE TWENTIETH GENERAL ASSEMBLY, FROM THE COUNTY OF BOULDER. (TWO TO ELECT).

A. P. Ardourel, Democrat.....	4,435
L. E. Girard, Republican.....	3,750
Joseph Hurd, Democrat.....	2,994
R. L. Montgomery, Republican.....	4,023
Henry Stewart, Socialist.....	605
John C. Thompson, Socialist.....	635
Ardourel over Girard.....	685
Montgomery over Girard.....	273

## ABSTRACT OF VOTES CAST

ABSTRACT OF VOTES CAST AT A GENERAL ELECTION HELD ON TUESDAY, NOVEMBER 3, A. D. 1914, FOR REPRESENTATIVE IN THE TWENTIETH GENERAL ASSEMBLY, FROM THE COUNTY OF CHAFFEE.

COUNTY	A. E. Wright, Jr. (Dem.)	Homer J. Brown (Soc.)	Edwin A. Van Camp (Citizen)
Chaffee .....	1,488	397	797
Wright over Van Camp.....			691

ABSTRACT OF VOTES CAST AT A GENERAL ELECTION HELD ON TUESDAY, NOVEMBER 3, A. D. 1914, FOR REPRESENTATIVE IN THE TWENTIETH GENERAL ASSEMBLY, FROM THE COUNTY OF CLEAR CREEK.

COUNTY	Frank Brady (Dem.)	Herman E. Crist (Rep.)
Clear Creek.....	743	991
Crist's majority .....		248

ABSTRACT OF VOTES CAST

ABSTRACT OF VOTES CAST AT A GENERAL ELECTION HELD ON TUESDAY, NOVEMBER 3, A. D. 1914, FOR REPRESENTATIVE IN THE TWENTIETH GENERAL ASSEMBLY, FROM THE COUNTY OF CONEJOS.

COUNTY	Celestino Garcia (Rep.)	Ricardo Gonzales (Dem.)
Conejos .....	1,404	989
Garcia's majority .....		415

ABSTRACT OF VOTES CAST AT A GENERAL ELECTION HELD ON TUESDAY, NOVEMBER 3, A. D. 1914, FOR REPRESENTATIVES IN THE TWENTIETH GENERAL ASSEMBLY FROM THE COUNTIES OF CROWLEY AND OTERO. (TWO TO ELECT).

COUNTIES	Reuben C. Inge (Rep.-Prog.)	Stephen F. Ilgenfritz (Dem.)	Orlando W. West (Dem.)	Chas. C. Wooldridge (Rep.-Prog.)
Crowley .....	615	598	507	831
Otero .....	2,829	1,850	2,694	2,327
	<hr/>	<hr/>	<hr/>	<hr/>
	3,444	2,448	3,201	3,158
Inge over Wooldridge.....				286
West over Wooldridge.....				43

ABSTRACT OF VOTES CAST

ABSTRACT OF VOTES CAST AT A GENERAL ELECTION HELD ON TUESDAY, NOVEMBER 3, A. D. 1914, FOR REPRESENTATIVE IN THE TWENTIETH GENERAL ASSEMBLY, FROM THE COUNTY OF DELTA.

COUNTY	Geo. W. Bruce (Dem.)	C. C. Hawkins (Prog.)	Jacob Keiser (Rep.)	F. J. Pearson (Soc.)
Delta .....	1,848	1,084	836	494
Bruce over Hawkins.....				764

ABSTRACT OF VOTES CAST AT A GENERAL ELECTION HELD ON TUESDAY, NOVEMBER 3, A. D. 1914, FOR REPRESENTATIVE IN THE TWENTIETH GENERAL ASSEMBLY, FROM THE COUNTY OF DOUGLAS.

COUNTY	Charles Shipman (Dem.)	Hugh Taylor (Rep.)
Douglas .....	577	680
Taylor's majority .....		103

ABSTRACT OF VOTES CAST AT A GENERAL ELECTION HELD ON TUESDAY, NOVEMBER 3, A. D. 1914, FOR REPRESENTATIVE IN THE TWENTIETH GENERAL ASSEMBLY, FROM THE COUNTY OF EAGLE.

COUNTY	James Dilts (Rep.)	Erlo E. Kennedy (Dem.)	R. W. Livers (Prog.)
Eagle .....	617	721	137
Kennedy over Dilts.....			104

ABSTRACT OF VOTES CAST AT A GENERAL ELECTION HELD ON TUESDAY, NOVEMBER 3, A. D. 1914, FOR REPRESENTATIVES IN THE TWENTIETH GENERAL ASSEMBLY, FROM THE COUNTY OF EL PASO. (THREE TO ELECT).

Jack Grant, Democrat.....	3,682
George B. Gould, Progressive.....	3,553
Lillian H. Kerr, Progressive.....	2,982
J. N. Pribble, Democrat.....	3,095
L. A. Puffer, Republican.....	5,686
M. M. Sinton, Democrat.....	4,575
P. B. Stewart, Republican.....	4,858
Geo. M. Taylor, Republican.....	4,766
Thomas E. Thomas, Progressive.....	3,691
F. D. Hahnenkratt, Socialist.....	721
Charles Edward Thomas Manning, Socialist.....	622
Frank D. Warren, Socialist.....	750
Puffer over Sinton.....	1,111
Stewart over Sinton.....	283
Taylor over Sinton.....	191

ABSTRACT OF VOTES CAST AT A GENERAL ELECTION HELD ON TUESDAY, NOVEMBER 3, A. D. 1914, FOR REPRESENTATIVE IN THE TWENTIETH GENERAL ASSEMBLY, FROM THE COUNTY OF FREMONT.

COUNTY	Allen Bell (Dem.)	Geo. E. Colgate (Rep.)	J. Homer Dickson (Prog.)	Genevieve Gould Battey (Soc.)
Fremont .....	2,214	2,454	430	358
Colgate over Bell.....			240	

## ABSTRACT OF VOTES CAST

ABSTRACT OF VOTES CAST AT A GENERAL ELECTION HELD ON TUESDAY, NOVEMBER 3, A. D. 1914, FOR REPRESENTATIVE IN THE TWENTIETH GENERAL ASSEMBLY FROM THE COUNTIES OF GARFIELD AND RIO BLANCO.

COUNTIES	Willis S. Montgomery (Dem.)	John L. Noonan (Rep.)
Garfield .....	1,239	1,990
Rio Blanco .....	581	388
	<hr/>	<hr/>
	1,820	2,378
Noonan's majority.....		558

ABSTRACT OF VOTES CAST AT A GENERAL ELECTION HELD ON TUESDAY, NOVEMBER 3, A. D. 1914, FOR REPRESENTATIVE IN THE TWENTIETH GENERAL ASSEMBLY, FROM THE COUNTY OF GILPIN.

COUNTY	Henry C. Bolsinger (Dem.)	William L. Kirk (Prog.)	William C. Mathews (Rep.)
Gilpin .....	532	256	414
Bolsinger over Mathews.....			118

ABSTRACT OF VOTES CAST AT A GENERAL ELECTION HELD ON TUESDAY, NOVEMBER 3, A. D. 1914, FOR REPRESENTATIVE IN THE TWENTIETH GENERAL ASSEMBLY, FROM THE COUNTY OF GUNNISON.

COUNTY	W. Scott Humason (Rep.)	James A. McElroy (Dem.)	Lewis H. Easterly (Soc.)
Gunnison .....	1,117	741	449
Humason over McElroy.....			376

ABSTRACT OF VOTES CAST

ABSTRACT OF VOTES CAST AT A GENERAL ELECTION HELD ON TUESDAY, NOVEMBER 3, A. D. 1914, FOR REPRESENTATIVE IN THE TWENTIETH GENERAL ASSEMBLY FROM THE COUNTIES OF ARCHULETA, HINSDALE AND MINERAL.

COUNTIES	A. M. Collins (Rep.)	James J. O'Rourke (Dem.)	Owen McDermat (Soc.)
Archuleta .....	334	645	..
Hinsdale .....	128	122	..
Mineral .....	339	109	5
	<hr/>	<hr/>	<hr/>
	801	876	5
O'Rourke over Collins.....			75

ABSTRACT OF VOTES CAST AT A GENERAL ELECTION HELD ON TUESDAY, NOVEMBER 3, A. D. 1914, FOR REPRESENTATIVE IN THE TWENTIETH GENERAL ASSEMBLY FROM THE COUNTIES OF HUERFANO AND COSTILLA.

COUNTIES	J. P. Campbell (Dem.-Prog.)	J. P. Gallegos (Rep.)
Huerfano .....	2,106	2,479
Costilla .....	517	680
	<hr/>	<hr/>
	2,623	3,159
Gallegos' majority.....		536

ABSTRACT OF VOTES CAST

ABSTRACT OF VOTES CAST AT A GENERAL ELECTION HELD ON TUESDAY, NOVEMBER 3, A. D. 1914, FOR REPRESENTATIVE IN THE TWENTIETH GENERAL ASSEMBLY, FROM THE COUNTY OF JEFFERSON.

COUNTY	John Grattan (Prog.)	Wesley Staley (Dem.)	Charles C. Welch (Rep.)	D. B. Kirkman (Soc.)
Jefferson .....	562	2,283	1,956	257
Haley over Welch.....				327

ABSTRACT OF VOTES CAST AT A GENERAL ELECTION HELD ON TUESDAY, NOVEMBER 3, A. D. 1914, FOR REPRESENTATIVE IN THE TWENTIETH GENERAL ASSEMBLY FROM THE COUNTIES OF KIOWA AND BENT.

COUNTIES	Eoon Best (Dem.)	W. A. Hasty (Rep.-Prog.)
Kiowa .....	889	506
Bent .....	809	939
	1,698	1,445
Best's majority .....		253

ABSTRACT OF VOTES CAST AT A GENERAL ELECTION HELD ON TUESDAY, NOVEMBER 3, A. D. 1914, FOR REPRESENTATIVE IN THE TWENTIETH GENERAL ASSEMBLY, FROM THE COUNTY OF LAKE.

COUNTY	Winters Morrell (Rep.-Prog.)	Fred J. McNair (Dem.)	E. W. McClintock (Soc.)
Lake .....	1,415	1,873	323
McNair over Morrell.....			458



ABSTRACT OF VOTES CAST

ABSTRACT OF VOTES CAST AT A GENERAL ELECTION HELD ON TUESDAY, NOVEMBER 3, A. D. 1914, FOR REPRESENTATIVE IN THE TWENTIETH GENERAL ASSEMBLY, FROM THE COUNTY OF LA PLATA.

COUNTY	Wm. C. Jemmlson (Dem.)	Jno. H. McDevitt, Jr. (Rep.)
La Plata .....	1,259	1,973
McDevitt, Jr.'s majority .....		714

ABSTRACT OF VOTES CAST AT A GENERAL ELECTION HELD ON TUESDAY, NOVEMBER 3, A. D. 1914, FOR REPRESENTATIVE IN THE TWENTIETH GENERAL ASSEMBLY, FROM THE COUNTY OF LARIMER.

COUNTY	P. D. Nelson (Rep.-Prog.)	Abram C. Van Galder (Dem.)	Clyde Karnes (Soc.)
Larimer .....	3,287	2,411	452
Nelson over Van Galder .....			876

ABSTRACT OF VOTES CAST AT A GENERAL ELECTION HELD ON TUESDAY, NOVEMBER 3, A. D. 1914, FOR REPRESENTATIVES IN THE TWENTIETH GENERAL ASSEMBLY, FROM THE COUNTY OF LAS ANIMAS. (TWO TO ELECT).

COUNTY	John Mayer (Rep.)	F. E. Nelson (Dem.)	J. B. Proctor (Prog.)	H. A. Schmidt (Rep.)	Meliton R. Vasquez (Dem.)	Callie Harper (Soc.)	F. B. McGregor (Soc.)
Las Animas...	4,228	3,793	366	3,905	3,522	323	297
Mayer over Nelson .....						435	
Schmidt over Nelson .....						112	

## ABSTRACT OF VOTES CAST

ABSTRACT OF VOTES CAST AT A GENERAL ELECTION HELD ON TUESDAY, NOVEMBER 3, A. D. 1914, FOR REPRESENTATIVE IN THE TWENTIETH GENERAL ASSEMBLY FROM THE COUNTIES OF LINCOLN, KIT CARSON AND CHEYENNE.

COUNTIES	John M. Newell (Dem.)	Clarence M. Smith (Prog.)	F. H. Spencer (Rep.)
Lincoln .....	928	195	823
Kit Carson .....	653	512	597
Cheyenne .....	241	144	663
	<hr/>	<hr/>	<hr/>
	1,822	851	2,083
Spencer over Newell.....		261	

ABSTRACT OF VOTES CAST AT A GENERAL ELECTION HELD ON TUESDAY, NOVEMBER 3, A. D. 1914, FOR REPRESENTATIVE IN THE TWENTIETH GENERAL ASSEMBLY FROM THE COUNTIES OF LOGAN AND SEDGWICK.

COUNTIES	G. Fosdick (Dem.)	John C. Scott (Rep.-Prog.)
Logan .....	1,252	1,891
Sedgwick .....	325	554
	<hr/>	<hr/>
	1,577	2,445
Scott's majority .....	868	

ABSTRACT OF VOTES CAST

ABSTRACT OF VOTES CAST AT A GENERAL ELECTION HELD ON TUESDAY, NOVEMBER 3, A. D. 1914, FOR REPRESENTATIVE IN THE TWENTIETH GENERAL ASSEMBLY, FROM THE COUNTY OF MESA.

COUNTY	Laura S. Johnson (Prog.)	J. M. Kinard (Rep.)	William M. Porter (Dem.)	S. B. Hutchinson (Soc.)
Mesa .....	1,044	1,503	2,441	1,077
Porter over Kinard.....				938

ABSTRACT OF VOTES CAST AT A GENERAL ELECTION HELD ON TUESDAY, NOVEMBER 3, A. D. 1914, FOR REPRESENTATIVE IN THE TWENTIETH GENERAL ASSEMBLY FROM THE COUNTIES OF MONTEZUMA AND DOLORES.

COUNTIES	S. C. Green (Rep.)	William I. Myler (Dem.)
Montezuma .....	923	795
Dolores .....	76	170
	999	965
Green's majority .....		34

ABSTRACT OF VOTES CAST AT A GENERAL ELECTION HELD ON TUESDAY, NOVEMBER 3, A. D. 1914, FOR REPRESENTATIVE IN THE TWENTIETH GENERAL ASSEMBLY, FROM THE COUNTY OF MONTROSE.

COUNTY	C. E. Adams (Rep.)	W. J. Horton (Dem.)	Wm. K. Taptan (Soc.)
Montrose .....	1,534	1,885	424
Horton over Adams.....			351

ABSTRACT OF VOTES CAST

ABSTRACT OF VOTES CAST AT A GENERAL ELECTION HELD ON TUESDAY, NOVEMBER 3, A. D. 1914, FOR REPRESENTATIVE IN THE TWENTIETH GENERAL ASSEMBLY FROM THE COUNTIES OF MORGAN AND WASHINGTON.

COUNTIES	Ralph F. Drennan (Prog.)	Adolph Brockman (Dem.)	Mark B. Gill (Rep.)	Henry W. Sweetland (Soc.)
Morgan .....	691	755	1,302	217
Washington .....	264	677	813	102
	<hr/>	<hr/>	<hr/>	<hr/>
	955	1,432	2,115	319
Gill over Brockman.....				683

ABSTRACT OF VOTES CAST AT A GENERAL ELECTION HELD ON TUESDAY, NOVEMBER 3, A. D. 1914, FOR REPRESENTATIVE IN THE TWENTIETH GENERAL ASSEMBLY, FROM THE COUNTY OF OURAY.

COUNTY	B. H. DuPraw (Dem.)	Robt. K. Humphrey (Rep.)
Ouray .....	842	579
DuPraw's majority .....	263	

ABSTRACT OF VOTES CAST

ABSTRACT OF VOTES CAST AT A GENERAL ELECTION HELD ON TUESDAY, NOVEMBER 3, A. D. 1914, FOR REPRESENTATIVE IN THE TWENTIETH GENERAL ASSEMBLY FROM THE COUNTIES OF PHILLIPS AND YUMA.

COUNTIES	Joseph B. Campbell (Dem.)	Chas. E. Damewood (Rep.-Prog.)
Phillips .....	469	595
Yuma .....	1,207	1,374
Totals.....	1,676	1,969
Damewood's majority .....		293

ABSTRACT OF VOTES CAST AT A GENERAL ELECTION HELD ON TUESDAY, NOVEMBER 3, A. D. 1914, FOR REPRESENTATIVE IN THE TWENTIETH GENERAL ASSEMBLY, FROM THE COUNTY OF PITKIN.

COUNTY	Thomas Anson (Prog.)	Charles Dalley (Dem.)	J. W. Deane (Rep.)	J. Edw. Turner (Soc.)
Pitkin .....	240	503	319	172
Dalley over Deane.....				184

## ABSTRACT OF VOTES CAST

ABSTRACT OF VOTES CAST AT A GENERAL ELECTION HELD ON TUESDAY, NOVEMBER 3, A. D. 1914, FOR REPRESENTATIVE IN THE TWENTIETH GENERAL ASSEMBLY FROM THE COUNTIES OF PROWERS AND BACA.

COUNTIES	Evan R. Jones (Dem.-Prog.)	Ray McGrath (Rep.)
Baca .....	512	581
Prowers .....	1,121	1,623
Totals.....	1,633	2,204
McGrath's majority .....	571	

ABSTRACT OF VOTES CAST AT A GENERAL ELECTION HELD ON TUESDAY, NOVEMBER 3, A. D. 1914, FOR REPRESENTATIVES IN THE TWENTIETH GENERAL ASSEMBLY, FROM THE COUNTY OF PUEBLO. (FOUR TO ELECT).

A. S. Andrew, Republican.....	7,862
D. C. Cook, Socialist.....	1,034
P. C. Dunlap, Democratic.....	6,303
Hallet C. Gallup, Democratic.....	6,192
F. L. Higgins, Democratic.....	5,924
David W. Jones, Republican.....	6,237
C. M. Kohnman, Socialist.....	1,328
J. J. Laurenry, Progressive.....	268
D. P. McGrew, Socialist.....	818
J. M. Sare, Democratic.....	6,116
F. M. Stokes, Republican.....	6,706
F. E. Wallace, Republican.....	7,308
Mrs. Love Westfall, Socialist .....	954
J. U. Wilkins, Democratic .....	370
Andrew over Jones.....	1,625
Wallace over Jones.....	1,071
Stokes over Jones.....	469
Dunlap over Jones.....	66

ABSTRACT OF VOTES CAST AT A GENERAL ELECTION HELD ON TUESDAY, NOVEMBER 3, A. D. 1914, FOR REPRESENTATIVE IN THE TWENTIETH GENERAL ASSEMBLY, FROM THE COUNTY OF RIO GRANDE.

COUNTY	Thomas W. Carr (Dem.-Ind.)	August J. Weiss (Rep.-Law.)
Rio Grande .....	833	1,227
Weiss' majority .....	394	

ABSTRACT OF VOTES CAST AT A GENERAL ELECTION HELD ON TUESDAY, NOVEMBER 3, A. D. 1914, FOR REPRESENTATIVE IN THE TWENTIETH GENERAL ASSEMBLY FROM THE COUNTIES OF ROUTT AND MOFFAT.

COUNTIES	Horace C. Dodge (Rep.)	Robert E. Norvell (Dem.)
Moffat .....	356	446
Routt .....	879	1,407
Totals.....	1,235	1,853
Norvell's majority .....	618	

## ABSTRACT OF VOTES CAST

ABSTRACT OF VOTES CAST AT A GENERAL ELECTION HELD ON TUESDAY, NOVEMBER 3, A. D. 1914, FOR REPRESENTATIVE IN THE TWENTIETH GENERAL ASSEMBLY FROM THE COUNTIES OF SAGUACHE AND CUSTER.

COUNTIES	W. Scott Carroll (Rep.)	Carl L. Marold (Dem.)
Custer .....	371	475
Saguache .....	879	860
Totals.....	1,250	1,335
Marold's majority .....	85	

ABSTRACT OF VOTES CAST AT A GENERAL ELECTION HELD ON TUESDAY, NOVEMBER 3, A. D. 1914, FOR REPRESENTATIVE IN THE TWENTIETH GENERAL ASSEMBLY, FROM THE COUNTY OF SAN JUAN.

COUNTIES	John S. Fox (Dem.)	Henry Langhurst (Soc.)	J. A. McCrimmon (Rep.-Prog.)
San Juan .....	494	94	326
Fox over McCrimmon.....		168	



ABSTRACT OF VOTES CAST

ABSTRACT OF VOTES CAST AT A GENERAL ELECTION HELD ON TUESDAY, NOVEMBER 3, A. D. 1914, FOR REPRESENTATIVE IN THE TWENTIETH GENERAL ASSEMBLY, FROM THE COUNTY OF SAN MIGUEL.

COUNTIES	W. H. Doyle (Dem.)	W. R. Vanderveer (Rep.)	Albert T. Woods (Ind.)
San Miguel .....	896	705	327
Doyle over Vanderveer.....		191	

ABSTRACT OF VOTES CAST AT A GENERAL ELECTION HELD ON TUESDAY, NOVEMBER 3, A. D. 1914, FOR REPRESENTATIVE IN THE TWENTIETH GENERAL ASSEMBLY FROM THE COUNTIES OF SUMMIT, GRAND AND JACKSON.

COUNTIES	Stewart P. Fincher (Dem.)	O. K. Gaymon (Rep.)
Grand .....	467	411
Jackson .....	212	183
Summit .....	482	416
Totals.....	1,161	1,010
Fincher's majority .....	151	

## ABSTRACT OF VOTES CAST

ABSTRACT OF VOTES CAST AT A GENERAL ELECTION HELD ON TUESDAY, NOVEMBER 3, A. D. 1914, FOR REPRESENTATIVES IN THE TWENTIETH GENERAL ASSEMBLY FROM THE COUNTIES OF TELLER AND PARK. (TWO TO ELECT).

COUNTIES	W. L. Baker (Soc.)	W. A. Harrison (Rep.-Prog.)	Clinton E. Roberts (Dem.)	John H. White (Rep.-Prog.)	Emery R. Young (Dem.)
Park .....	45	344	367	312	356
Teller .....	530	1,673	2,403	2,270	2,047
Totals.....	575	2,017	2,770	2,582	2,403
Roberts over Young.....				367	
White over Young.....				179	

ABSTRACT OF VOTES CAST AT A GENERAL ELECTION HELD ON TUESDAY, NOVEMBER 3, A. D. 1914, FOR REPRESENTATIVES IN THE TWENTIETH GENERAL ASSEMBLY, FROM THE COUNTY OF WELD. (TWO TO ELECT).

Leonard Burch, Progressive .....	1,244
William K. Gilchrist, Republican .....	4,563
C. R. Graves, Republican .....	4,156
John A. Hicks, Democratic-Prohibition .....	4,059
F. H. Hubert, Socialist.....	497
J. R. McCall, Socialist .....	519
G. W. McMurray, Progressive-Prohibition .....	1,475
Charles T. Philp, Democratic .....	3,503
Gilcrest over Hicks.....	504
Graves over Hicks.....	97

ABSTRACT OF VOTES CAST AT A GENERAL ELECTION HELD ON  
TUESDAY, NOVEMBER 3, A. D. 1914, FOR UNITED STATES SENATOR.

COUNTIES	Benj. Griffith (Prog)	J. C. Griffiths (Soc.)	George J. Kindel (K. C. E.)	Charles S. Thomas (Dem.)	Hubert Work (Rep.)
Adams .....	284	135	219	1,184	702
Alamosa .....	107	161	38	627	579
Arapahoe .....	642	220	298	1,154	1,125
Archuleta .....	32	39	15	409	432
Baca .....	67	103	5	441	456
Bent .....	150	43	22	711	746
Boulder .....	655	583	236	4,024	4,315
Chaffee .....	173	262	105	1,259	986
Cheyenne .....	88	95	17	346	438
Clear Creek.....	58	52	92	766	640
Conejos .....	34	26	47	590	1,163
Costilla .....	31	38	13	293	688
Crowley .....	81	51	22	570	719
Custer .....	31	28	18	413	364
Delta .....	817	459	155	1,560	1,322
Denver .....	9,983	2,683	6,249	25,953	20,500
Dolores .....	28	37	10	131	31
Douglas .....	44	34	28	483	607
Eagle .....	142	60	61	608	518
Elbert .....	115	101	56	691	789
El Paso .....	3,149	704	198	5,086	5,216
Fremont .....	525	346	124	2,265	2,440
Garfield .....	304	291	135	1,479	1,188
Gilpin .....	43	45	57	569	403
Grand .....	31	29	61	357	393
Gunnison .....	119	298	66	918	820
Hinsdale .....	6	22	1	117	107
Huerfano .....	87	26	19	2,040	2,479
Jackson .....	6	6	37	148	205
Jefferson .....	363	247	405	2,104	2,064