

STATE OF COLORADO

Abstract of Votes Cast

AT THE

Primary Election

Held on the Eighth Day of September
A. D. 1914

AND AT THE

General Election

Held on Third Day of November.
A. D. 1914

FOR

United States Senators, Congressmen, and State,
Legislative and District Officers

ALSO THE

Proposed Constitutional Amendments
Initiated and Referred Measures

COMPILED FROM OFFICIAL RETURNS

BY

JOHN E. RAMER
Secretary of State

1915



DENVER, COLORADO

ABSTRACT OF VOTES CAST AT A GENERAL ELECTION HELD ON
TUESDAY, NOVEMBER 3, A. D. 1914, FOR STATE SENATORS FROM
THE FIRST SENATORIAL DISTRICT.

City and County of Denver.

Julius Aichele, Democratic	15,148
T. J. Brown, Socialist.....	3,660
Frank L. Dodge, Republican.....	25,476
William R. Eaton, Republican.....	25,283
Harvey E. Garman, no ass'by.....	5,483
Charles B. Hamilton, Democratic.....	22,796
Barney Haughey, no ass'by.....	702
John Hecker, L., O. and J.....	3,125
John E. Holmberg, Republican.....	22,182
Hattie K. Howard, Progressive.....	6,732
Francis J. Knauss, Republican	24,029
Charles N. Knowles, Progressive	9,022
Nicholas Ludwig, no ass'by.....	2,130
Phillip McCarty, Democratic	17,055
Martin H. Mitchell, Democratic	16,469
John Nitsch, Socialist.....	2,913
Maude E. Sanders, Progressive	8,051
John A. Sells, Socialist	2,750
Chester E. Smedley, Progressive	10,588
Fred Underhill, Socialist	3,202
Dodge over Holmberg.....	3,294
Eaton over Holmberg.....	3,101
Knauss over Holmberg.....	1,847
Hamilton over Holmberg.....	614

ABSTRACT OF VOTES CAST

ABSTRACT OF VOTES CAST AT A GENERAL ELECTION HELD ON
TUESDAY, NOVEMBER 3, A. D. 1914, FOR STATE SENATOR FROM
THE SECOND SENATORIAL DISTRICT.

COUNTY	H. G. DeTienne (Dem.)	Wilkins O. Peterson (Rep.)	C. B. Anthony (Soc.)
Pueblo	4,955	6,906	701
Peterson over De Tienne.....		1,951	

ABSTRACT OF VOTES CAST AT A GENERAL ELECTION HELD ON
TUESDAY, NOVEMBER 3, A. D. 1914, FOR STATE SENATOR FROM
THE THIRD SENATORIAL DISTRICT.

COUNTY	David Elliott (Rep.)	John T. Kavanaugh (Dem.)	C. A. Lemmers (Prog.)	M. J. Acton (Soc.)
El Paso	5,298	4,215	3,435	731
Elliott over Kavanaugh.....			1,083.	

ABSTRACT OF VOTES CAST AT A GENERAL ELECTION HELD ON TUESDAY, NOVEMBER 3, A. D. 1914, FOR STATE SENATOR FROM THE SIXTH SENATORIAL DISTRICT.

COUNTIES	William J. Candlish (Rep.-Prog.)	Walter L. Philbin (Dem.)
Chaffee	1,391	1,393
Lake	1,806	1,638
	3,197	3,031
Candlish's majority		166

ABSTRACT OF VOTES CAST AT A GENERAL ELECTION HELD ON TUESDAY, NOVEMBER 3, A. D. 1914, FOR STATE SENATOR FROM THE SEVENTH SENATORIAL DISTRICT.

COUNTY	B. F. Early (Dem.)	James W. Gault (Prog.)	Robert E. Winbourne (Rep.)	N. N. Westfall (Soc.)
Weld	3,969	1,478	5,502	500
Winbourne over Early				1,533

ABSTRACT OF VOTES CAST

ABSTRACT OF VOTES CAST AT A GENERAL ELECTION HELD ON
TUESDAY, NOVEMBER 3, A. D. 1914, FOR STATE SENATOR FROM
THE TENTH SENATORIAL DISTRICT.

COUNTY	Fred W. Stow (Dem.)	C. F. Wilkin (Rep.-Prog.)	J. H. Mayfield (Soc.)
Larimer	2,631	3,271	444
Wilkin over Stow.....		640	

ABSTRACT OF VOTES CAST AT A GENERAL ELECTION HELD ON
TUESDAY, NOVEMBER 3, A. D. 1914, FOR STATE SENATOR FROM
THE TWELFTH SENATORIAL DISTRICT.

COUNTIES	Clarence O. Finch (Dem.)	Henry A. Klingner (Prog.)	O. L. Mitten (Rep.)
Logan	1,304	303	1,433
Phillips	439	125	521
Sedgwick	358	168	406
Washington	691	195	853
Yuma	964	707	1,141
	<hr/>	<hr/>	<hr/>
	3,756	1,498	4,354
Mitten over Finch.....		598	

ABSTRACT OF VOTES CAST

ABSTRACT OF VOTES CAST AT A GENERAL ELECTION HELD ON TUESDAY, NOVEMBER 3, A. D. 1914, FOR STATE SENATOR FROM THE FOURTEENTH SENATORIAL DISTRICT.

COUNTIES	Charles Hayden (Rep.)	A. D. Mackenzie (Dem.-Prog.)
Costilla	729	356
Custer	315	589
Huerfano	2,348	2,132
	<hr/>	<hr/>
	3,392	3,077
Hayden's majority	315	

ABSTRACT OF VOTES CAST AT A GENERAL ELECTION HELD ON TUESDAY, NOVEMBER 3, A. D. 1914, FOR STATE SENATOR FROM THE FIFTEENTH SENATORIAL DISTRICT.

COUNTIES	Frank H. Means (Rep.)	Byron A. Roloson (Dem.)
Mineral	147	210
Rio Grande	1,182	881
Saguache	1,102	715
	<hr/>	<hr/>
	2,431	1,806
Means' majority	625	

ABSTRACT OF VOTES CAST

ABSTRACT OF VOTES CAST AT A GENERAL ELECTION HELD ON TUESDAY, NOVEMBER 3, A. D. 1914, FOR STATE SENATOR FROM THE SIXTEENTH SENATORIAL DISTRICT.

COUNTY	Erman W. Kluge (Dem.)	Avery C. Newton (Prog.)	F. Barnard Welsh (Rep.)	E. M. Cline (Soc.)
Mesa	2,522	1,543	1,375	929
Kluge over Newton.....				979

ABSTRACT OF VOTES CAST AT A GENERAL ELECTION HELD ON TUESDAY, NOVEMBER 3, A. D. 1914, FOR STATE SENATOR FROM THE SEVENTEENTH SENATORIAL DISTRICT.

COUNTIES	Fred Schermerhorn (Dem.)	S. Wonder (Rep.)
Dolores	141	65
Montrose	1,755	1,728
San Miguel	943	810
	<hr/>	<hr/>
	2,839	2,603
Schermerhorn's majority		236

ABSTRACT OF VOTES CAST

ABSTRACT OF VOTES CAST AT A GENERAL ELECTION HELD ON TUESDAY, NOVEMBER 3, A. D. 1914, FOR STATE SENATOR FROM THE EIGHTEENTH SENATORIAL DISTRICT.

COUNTIES	Herbert E. Curran (Rep.)	John H. Slattery (Dem.)
Archuleta	453	464
Hinsdale	127	115
Ouray	781	519
San Juan	436	433
	<hr/>	<hr/>
	1,797	1,531
Curran's majority		266

ABSTRACT OF VOTES CAST AT A GENERAL ELECTION HELD ON TUESDAY, NOVEMBER 3, A. D. 1914, FOR STATE SENATOR FROM THE TWENTIETH SENATORIAL DISTRICT.

COUNTIES	George Lewis (Dem.)	Melville B. Rapp (Rep.-Prog.)	W. B. Butler (Soc.)
Park	475	367	48
Teller	3,406	1,459	437
	<hr/>	<hr/>	<hr/>
	3,881	1,826	485
Lewis over Rapp			2,055

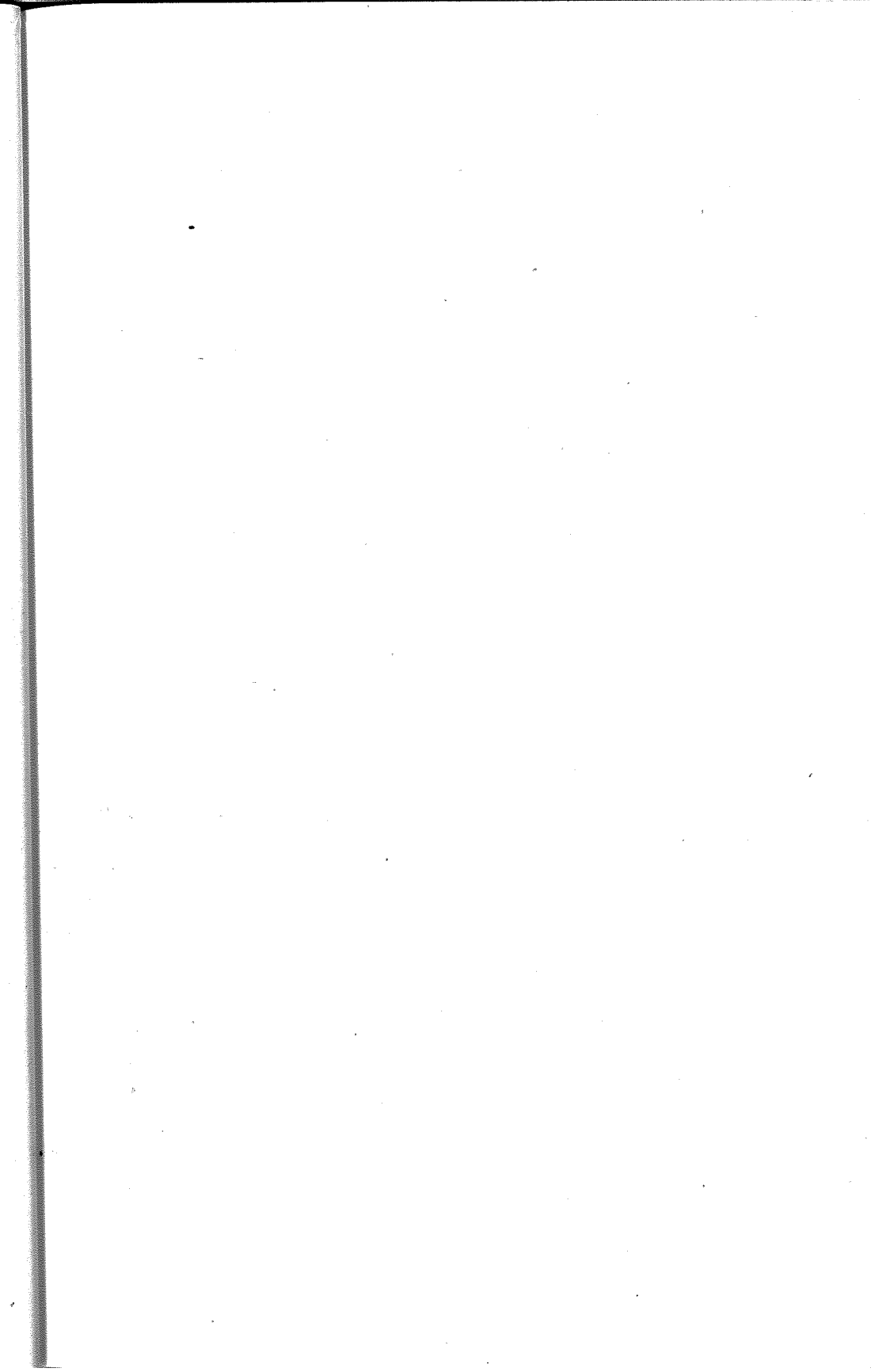
ABSTRACT OF VOTES CAST

ABSTRACT OF VOTES CAST AT A GENERAL ELECTION HELD ON
TUESDAY, NOVEMBER 3, A. D. 1914, FOR STATE SENATOR FROM
THE TWENTY-FIFTH SENATORIAL DISTRICT.

COUNTIES	John S. Hasty (Rep.)	M. M. Simpson (Dem.-Prog.)
Baca	594	510
Bent	907	826
Kiowa	573	665
Prowers	1,607	1,272
	<hr/>	<hr/>
	3,681	3,273
Hasty's majority		408

ABSTRACT OF VOTES CAST AT A GENERAL ELECTION HELD ON
TUESDAY, NOVEMBER 3, A. D. 1914, FOR STATE SENATOR FROM
THE TWENTY-SEVENTH SENATORIAL DISTRICT.

COUNTIES	W. H. Abbott (Prog.)	John F. Dickinson (Rep.)	William D. Reilly (Dem.)
Cheyenne	72	553	351
Douglas	41	556	608
Elbert	115	605	1,062
Kit Carson	437	735	615
Lincoln	123	949	929
	<hr/>	<hr/>	<hr/>
	788	3,398	3,565
Reilly over Dickinson			167



ABSTRACT OF VOTES CAST AT A GENERAL ELECTION HELD ON
TUESDAY, NOVEMBER 3, A. D. 1914, FOR REPRESENTATIVE IN
THE TWENTIETH GENERAL ASSEMBLY FROM THE CITY AND
COUNTY OF DENVER.

Joseph S. Baker, Progressive.....	14,191
Edward B. Bartholic, Socialist.....	3,359
George M. Bergen, No Ass'by.....	1,193
Morris Berkowitz, Socialist.....	3,143
Carroll M. Bills, Republican.....	25,320
Herman A. Bolster, No Ass'by.....	1,127
Rudolph Borchardt, Tax Payer.....	4,201
William T. Boyd, Progressive.....	7,350
Joseph B. Cobbs, No. Ass'by.....	1,447
Albert Gallatin Craig, Democrat.....	18,038
John F. Critchfield, Socialist.....	3,247
John Dietrich, Democrat.....	21,076
George B. Drake, Republican.....	25,388
Edward V. Dunklee, Democrat.....	23,142
James G. Edgeworth, Socialist.....	3,341
William F. Evans, Progressive.....	8,121
William Engelbert Frye, Progressive.....	7,468
Walter R. Garretson, Republican.....	17,998
James O. Garrett, Democrat.....	17,437
Harold G. Garwood, Republican.....	20,014
McLeod M. George, Progressive.....	6,405
John S. Gable, No Ass'by.....	1,223
Alby N. Gordon, Socialist.....	3,188
Randolph M. Hagerman, Republican.....	22,964
Robert Harris, Republican.....	22,216
Evangeline Heartz, Democrat.....	20,119
Axel E. Helme, No Ass'by.....	1,005
William W. Howland, Republican.....	21,264
Thomas M. Hyder, Democrat.....	15,239
John T. Joyce, Socialist.....	3,203
Jennie B. Kern, Socialist.....	2,841
Margaret W. Kessler, Progressive.....	6,719
Albert Kiefer, Socialist.....	3,146
Fred Lambert, No Ass'by.....	2,003
James Thomas Macey, Republican.....	16,992
Adrian Maguire, No Ass'by.....	2,272
Louise A. Maloney, Democrat.....	14,935

ABSTRACT OF VOTES CAST AT A GENERAL ELECTION HELD ON
TUESDAY, NOVEMBER 3, A. D. 1914, FOR REPRESENTATIVE IN
THE TWENTIETH GENERAL ASSEMBLY FROM THE CITY AND
COUNTY OF DENVER.—Continued.

Thomas F. McGovern, Democrat.....	16,656
William J. McPherson, Progressive.....	7,691
Rufus P. Means, Democrat.....	14,377
Schuyler C. Peck, Progressive.....	7,650
Burnett S. Pepper, Progressive.....	6,786
Leonard Ruehle, No Ass'by.....	1,668
Stephen W. Ryan, Democrat.....	16,279
John A. Rymer, Progressive.....	6,891
Edward M. Sabin, Republican.....	18,994
Benjamin J. Salmon, Democrat.....	17,547
Charles H. Schreiber, Progressive.....	12,706
William P. Simmington, Progressive.....	10,616
Jennie E. Smith, Socialist.....	3,310
Frank Springrose, No Ass'by.....	700
Edward W. Stuart, No Ass'by.....	991
Fred J. Taylor, No Ass'by.....	2,332
Frank D. Thompson, Republican.....	23,220
Thomas Tonge, Republican.....	19,614
Charles W. Varnum, Republican.....	17,082
Jesse Vetter, Socialist.....	3,602
John Redmond Williams, Democrat.....	17,866
Anton F. Willmer, Socialist.....	2,894
William Young, Socialist.....	3,275
Drake over Craig.....	7,350
Dunklee over Craig.....	5,104
Howland over Craig.....	3,226
Garwood over Craig.....	1,976
Bills over Craig.....	7,282
Hagerman over Craig.....	4,926
Dietrich over Craig.....	3,038
Tonge over Craig.....	1,576
Thompson over Craig.....	5,182
Harris over Craig.....	4,170
Heartz over Craig.....	2,081
Sabin over Craig.....	956

ABSTRACT OF VOTES CAST

ABSTRACT OF VOTES CAST AT A GENERAL ELECTION HELD ON TUESDAY, NOVEMBER 3, A. D. 1914, FOR REPRESENTATIVES IN THE TWENTIETH GENERAL ASSEMBLY, FROM THE COUNTY OF ADAMS.

COUNTY	James N. Counter (Dem.)	Samuel H. Morrow (Rep.-Prog.)
Adams	1,446	1,001
Counter's majority	445	

ABSTRACT OF VOTES CAST AT A GENERAL ELECTION HELD ON TUESDAY, NOVEMBER 3, A. D. 1914, FOR REPRESENTATIVES IN THE TWENTIETH GENERAL ASSEMBLY, FROM THE COUNTY OF ALAMOSA.

COUNTY	Robert M. Born (Dem.)	Perry Craig (Rep.-Prog.)
Alamosa	838	715
Born's majority	123	

ABSTRACT OF VOTES CAST AT A GENERAL ELECTION HELD ON TUESDAY, NOVEMBER 3, A. D. 1914, FOR REPRESENTATIVE IN THE TWENTIETH GENERAL ASSEMBLY FROM THE COUNTIES OF ARAPAHOE AND ELBERT.

COUNTIES	Frank Ford (Prog.)	Fred F. Hee (Dem.)	J. J. Kruse (Rep.)
Arapahoe	1,035	1,199	1,053
Elbert	156	535	1,084
	1,191	1,734	2,137

Kruse over Hee..... 403

ABSTRACT OF VOTES CAST AT A GENERAL ELECTION HELD ON TUESDAY, NOVEMBER 3, A. D. 1914, FOR REPRESENTATIVES IN THE TWENTIETH GENERAL ASSEMBLY, FROM THE COUNTY OF BOULDER. (TWO TO ELECT).

A. P. Ardourel, Democrat.....	4,435
L. E. Girard, Republican.....	3,750
Joseph Hurd, Democrat.....	2,994
R. L. Montgomery, Republican.....	4,023
Henry Stewart, Socialist.....	605
John C. Thompson, Socialist.....	635
Ardourel over Girard.....	685
Montgomery over Girard.....	273

ABSTRACT OF VOTES CAST

ABSTRACT OF VOTES CAST AT A GENERAL ELECTION HELD ON TUESDAY, NOVEMBER 3, A. D. 1914, FOR REPRESENTATIVE IN THE TWENTIETH GENERAL ASSEMBLY, FROM THE COUNTY OF CHAFFEE.

COUNTY	A. E. Wright, Jr. (Dem.)	Homer J. Brown (Soc.)	Edwin A. Van Camp (Citizen)
Chaffee	1,488	397	797
Wright over Van Camp.....			691

ABSTRACT OF VOTES CAST AT A GENERAL ELECTION HELD ON TUESDAY, NOVEMBER 3, A. D. 1914, FOR REPRESENTATIVE IN THE TWENTIETH GENERAL ASSEMBLY, FROM THE COUNTY OF CLEAR CREEK.

COUNTY	Frank Brady (Dem.)	Herman E. Crist (Rep.)
Clear Creek.....	743	991
Crist's majority		248

ABSTRACT OF VOTES CAST

ABSTRACT OF VOTES CAST AT A GENERAL ELECTION HELD ON TUESDAY, NOVEMBER 3, A. D. 1914, FOR REPRESENTATIVE IN THE TWENTIETH GENERAL ASSEMBLY, FROM THE COUNTY OF CONEJOS.

COUNTY	Celestino Garcia (Rep.)	Ricardo Gonzales (Dem.)
Conejos	1,404	989
Garcia's majority		415

ABSTRACT OF VOTES CAST AT A GENERAL ELECTION HELD ON TUESDAY, NOVEMBER 3, A. D. 1914, FOR REPRESENTATIVES IN THE TWENTIETH GENERAL ASSEMBLY FROM THE COUNTIES OF CROWLEY AND OTERO. (TWO TO ELECT).

COUNTIES	Reuben C. Inge (Rep.-Prog.)	Stephen F. Ilgenfritz (Dem.)	Orlando W. West (Dem.)	Chas. C. Wooldridge (Rep.-Prog.)
Crowley	615	598	507	831
Otero	2,829	1,850	2,694	2,327
	<hr/>	<hr/>	<hr/>	<hr/>
	3,444	2,448	3,201	3,158
Inge over Wooldridge.....				286
West over Wooldridge.....				43

ABSTRACT OF VOTES CAST

ABSTRACT OF VOTES CAST AT A GENERAL ELECTION HELD ON TUESDAY, NOVEMBER 3, A. D. 1914, FOR REPRESENTATIVE IN THE TWENTIETH GENERAL ASSEMBLY, FROM THE COUNTY OF DELTA.

COUNTY	Geo. W. Bruce (Dem.)	C. C. Hawkins (Prog.)	Jacob Keiser (Rep.)	F. J. Pearson (Soc.)
Delta	1,848	1,084	836	494
Bruce over Hawkins.....				764

ABSTRACT OF VOTES CAST AT A GENERAL ELECTION HELD ON TUESDAY, NOVEMBER 3, A. D. 1914, FOR REPRESENTATIVE IN THE TWENTIETH GENERAL ASSEMBLY, FROM THE COUNTY OF DOUGLAS.

COUNTY	Charles Shipman (Dem.)	Hugh Taylor (Rep.)
Douglas	577	680
Taylor's majority		103

ABSTRACT OF VOTES CAST AT A GENERAL ELECTION HELD ON TUESDAY, NOVEMBER 3, A. D. 1914, FOR REPRESENTATIVE IN THE TWENTIETH GENERAL ASSEMBLY, FROM THE COUNTY OF EAGLE.

COUNTY	James Dilts (Rep.)	Erlo E. Kennedy (Dem.)	R. W. Livers (Prog.)
Eagle	617	721	137
Kennedy over Dilts.....			104

ABSTRACT OF VOTES CAST AT A GENERAL ELECTION HELD ON TUESDAY, NOVEMBER 3, A. D. 1914, FOR REPRESENTATIVES IN THE TWENTIETH GENERAL ASSEMBLY, FROM THE COUNTY OF EL PASO. (THREE TO ELECT).

Jack Grant, Democrat.....	3,682
George B. Gould, Progressive.....	3,553
Lillian H. Kerr, Progressive.....	2,982
J. N. Pribble, Democrat.....	3,095
L. A. Puffer, Republican.....	5,686
M. M. Sinton, Democrat.....	4,575
P. B. Stewart, Republican.....	4,858
Geo. M. Taylor, Republican.....	4,766
Thomas E. Thomas, Progressive.....	3,691
F. D. Hahnenkratt, Socialist.....	721
Charles Edward Thomas Manning, Socialist.....	622
Frank D. Warren, Socialist.....	750
Puffer over Sinton.....	1,111
Stewart over Sinton.....	283
Taylor over Sinton.....	191

ABSTRACT OF VOTES CAST AT A GENERAL ELECTION HELD ON TUESDAY, NOVEMBER 3, A. D. 1914, FOR REPRESENTATIVE IN THE TWENTIETH GENERAL ASSEMBLY, FROM THE COUNTY OF FREMONT.

COUNTY	Allen Bell (Dem.)	Geo. E. Colgate (Rep.)	J. Homer Dickson (Prog.)	Genevieve Gould Battey (Soc.)
Fremont	2,214	2,454	430	358
Colgate over Bell.....			240	

ABSTRACT OF VOTES CAST

ABSTRACT OF VOTES CAST AT A GENERAL ELECTION HELD ON TUESDAY, NOVEMBER 3, A. D. 1914, FOR REPRESENTATIVE IN THE TWENTIETH GENERAL ASSEMBLY FROM THE COUNTIES OF GARFIELD AND RIO BLANCO.

COUNTIES	Willis S. Montgomery (Dem.)	John L. Noonan (Rep.)
Garfield	1,239	1,990
Rio Blanco	581	388
	<hr/>	<hr/>
	1,820	2,378
Noonan's majority.....		558

ABSTRACT OF VOTES CAST AT A GENERAL ELECTION HELD ON TUESDAY, NOVEMBER 3, A. D. 1914, FOR REPRESENTATIVE IN THE TWENTIETH GENERAL ASSEMBLY, FROM THE COUNTY OF GILPIN.

COUNTY	Henry C. Bolsinger (Dem.)	William L. Kirk (Prog.)	William C. Mathews (Rep.)
Gilpin	532	256	414
Bolsinger over Mathews.....			118

ABSTRACT OF VOTES CAST AT A GENERAL ELECTION HELD ON TUESDAY, NOVEMBER 3, A. D. 1914, FOR REPRESENTATIVE IN THE TWENTIETH GENERAL ASSEMBLY, FROM THE COUNTY OF GUNNISON.

COUNTY	W. Scott Humason (Rep.)	James A. McElroy (Dem.)	Lewis H. Easterly (Soc.)
Gunnison	1,117	741	449
Humason over McElroy.....			376

ABSTRACT OF VOTES CAST

ABSTRACT OF VOTES CAST AT A GENERAL ELECTION HELD ON TUESDAY, NOVEMBER 3, A. D. 1914, FOR REPRESENTATIVE IN THE TWENTIETH GENERAL ASSEMBLY FROM THE COUNTIES OF ARCHULETA, HINSDALE AND MINERAL.

COUNTIES	A. M. Collins (Rep.)	James J. O'Rourke (Dem.)	Owen McDermat (Soc.)
Archuleta	334	645	.. .
Hinsdale	128	122	.. .
Mineral	339	109	5
	801	876	5
O'Rourke over Collins.....			75

ABSTRACT OF VOTES CAST AT A GENERAL ELECTION HELD ON TUESDAY, NOVEMBER 3, A. D. 1914, FOR REPRESENTATIVE IN THE TWENTIETH GENERAL ASSEMBLY FROM THE COUNTIES OF HUERFANO AND COSTILLA.

COUNTIES	J. P. Campbell (Dem.-Prog.)	J. P. Gallegos (Rep.)
Huerfano	2,106	2,479
Costilla	517	680
	2,623	3,159
Gallegos' majority.....		536

ABSTRACT OF VOTES CAST

ABSTRACT OF VOTES CAST AT A GENERAL ELECTION HELD ON TUESDAY, NOVEMBER 3, A. D. 1914, FOR REPRESENTATIVE IN THE TWENTIETH GENERAL ASSEMBLY, FROM THE COUNTY OF JEFFERSON.

COUNTY	John Grattan (Prog.)	Wesley Staley (Dem.)	Charles C. Welch (Rep.)	D. B. Kirkman (Soc.)
Jefferson	562	2,283	1,956	257
Haley over Welch.....				327

ABSTRACT OF VOTES CAST AT A GENERAL ELECTION HELD ON TUESDAY, NOVEMBER 3, A. D. 1914, FOR REPRESENTATIVE IN THE TWENTIETH GENERAL ASSEMBLY FROM THE COUNTIES OF KIOWA AND BENT.

COUNTIES	Eoon Best (Dem.)	W. A. Hasty (Rep.-Prog.)
Kiowa	889	506
Bent	809	939
	<hr/>	<hr/>
	1,698	1,445
Best's majority		253

ABSTRACT OF VOTES CAST AT A GENERAL ELECTION HELD ON TUESDAY, NOVEMBER 3, A. D. 1914, FOR REPRESENTATIVE IN THE TWENTIETH GENERAL ASSEMBLY, FROM THE COUNTY OF LAKE.

COUNTY	Winters Morrell (Rep.-Prog.)	Fred J. McNair (Dem.)	E. W. McClintock (Soc.)
Lake	1,415	1,873	323
McNair over Morrell.....			458

ABSTRACT OF VOTES CAST

ABSTRACT OF VOTES CAST AT A GENERAL ELECTION HELD ON TUESDAY, NOVEMBER 3, A. D. 1914, FOR REPRESENTATIVE IN THE TWENTIETH GENERAL ASSEMBLY, FROM THE COUNTY OF LA PLATA.

COUNTY	Wm. C. Jemmlson (Dem.)	Jno. H. McDevitt, Jr. (Rep.)
La Plata	1,259	1,973
McDevitt, Jr.'s majority.....		714

ABSTRACT OF VOTES CAST AT A GENERAL ELECTION HELD ON TUESDAY, NOVEMBER 3, A. D. 1914, FOR REPRESENTATIVE IN THE TWENTIETH GENERAL ASSEMBLY, FROM THE COUNTY OF LARIMER.

COUNTY	P. D. Nelson (Rep.-Prog.)	Abram C. Van Galder (Dem.)	Clyde Karnes (Soc.)
Larimer	3,287	2,411	452
Nelson over Van Galder.....			876

ABSTRACT OF VOTES CAST AT A GENERAL ELECTION HELD ON TUESDAY, NOVEMBER 3, A. D. 1914, FOR REPRESENTATIVES IN THE TWENTIETH GENERAL ASSEMBLY, FROM THE COUNTY OF LAS ANIMAS. (TWO TO ELECT).

COUNTY	John Mayer (Rep.)	F. E. Nelson (Dem.)	J. B. Proctor (Prog.)	H. A. Schmidt (Rep.)	Meliton R. Vasquez (Dem.)	Callie Harper (Soc.)	F. B. McGregor (Soc.)
Las Animas...	4,228	3,793	366	3,905	3,522	323	297
Mayer over Nelson						435	
Schmidt over Nelson						112	

ABSTRACT OF VOTES CAST

ABSTRACT OF VOTES CAST AT A GENERAL ELECTION HELD ON TUESDAY, NOVEMBER 3, A. D. 1914, FOR REPRESENTATIVE IN THE TWENTIETH GENERAL ASSEMBLY FROM THE COUNTIES OF LINCOLN, KIT CARSON AND CHEYENNE.

COUNTIES	John M. Newell (Dem.)	Clarence M. Smith (Prog.)	F. H. Spencer (Rep.)
Lincoln	928	195	823
Kit Carson	653	512	597
Cheyenne	241	144	663
	<hr/>	<hr/>	<hr/>
	1,822	851	2,083
Spencer over Newell.....		261	

ABSTRACT OF VOTES CAST AT A GENERAL ELECTION HELD ON TUESDAY, NOVEMBER 3, A. D. 1914, FOR REPRESENTATIVE IN THE TWENTIETH GENERAL ASSEMBLY FROM THE COUNTIES OF LOGAN AND SEDGWICK.

COUNTIES	G. Fosdick (Dem.)	John C. Scott (Rep.-Prog.)
Logan	1,252	1,891
Sedgwick	325	554
	<hr/>	<hr/>
	1,577	2,445
Scott's majority	868	

ABSTRACT OF VOTES CAST

ABSTRACT OF VOTES CAST AT A GENERAL ELECTION HELD ON TUESDAY, NOVEMBER 3, A. D. 1914, FOR REPRESENTATIVE IN THE TWENTIETH GENERAL ASSEMBLY, FROM THE COUNTY OF MESA.

COUNTY	Laura S. Johnson (Prog.)	J. M. Kinard (Rep.)	William M. Porter (Dem.)	S. B. Hutchinson (Soc.)
Mesa	1,044	1,503	2,441	1,077
Porter over Kinard.....				938

ABSTRACT OF VOTES CAST AT A GENERAL ELECTION HELD ON TUESDAY, NOVEMBER 3, A. D. 1914, FOR REPRESENTATIVE IN THE TWENTIETH GENERAL ASSEMBLY FROM THE COUNTIES OF MONTEZUMA AND DOLORES.

COUNTIES	S. C. Green (Rep.)	William I. Myler (Dem.)
Montezuma	923	795
Dolores	76	170
	999	965
Green's majority		34

ABSTRACT OF VOTES CAST AT A GENERAL ELECTION HELD ON TUESDAY, NOVEMBER 3, A. D. 1914, FOR REPRESENTATIVE IN THE TWENTIETH GENERAL ASSEMBLY, FROM THE COUNTY OF MONTROSE.

COUNTY	C. E. Adams (Rep.)	W. J. Horton (Dem.)	Wm. K. Taptan (Soc.)
Montrose	1,534	1,885	424
Horton over Adams.....			351

ABSTRACT OF VOTES CAST

ABSTRACT OF VOTES CAST AT A GENERAL ELECTION HELD ON TUESDAY, NOVEMBER 3, A. D. 1914, FOR REPRESENTATIVE IN THE TWENTIETH GENERAL ASSEMBLY FROM THE COUNTIES OF MORGAN AND WASHINGTON.

COUNTIES	Ralph F. Drennan (Prog.)	Adolph Brockman (Dem.)	Mark B. Gill (Rep.)	Henry W. Sweetland (Soc.)
Morgan	691	755	1,302	217
Washington	264	677	813	102
	<hr/>	<hr/>	<hr/>	<hr/>
	955	1,432	2,115	319
Gill over Brockman.....				683

ABSTRACT OF VOTES CAST AT A GENERAL ELECTION HELD ON TUESDAY, NOVEMBER 3, A. D. 1914, FOR REPRESENTATIVE IN THE TWENTIETH GENERAL ASSEMBLY, FROM THE COUNTY OF OURAY.

COUNTY	B. H. DuPraw (Dem.)	Robt. K. Humphrey (Rep.)
Ouray	842	579
DuPraw's majority	263	

ABSTRACT OF VOTES CAST

ABSTRACT OF VOTES CAST AT A GENERAL ELECTION HELD ON TUESDAY, NOVEMBER 3, A. D. 1914, FOR REPRESENTATIVE IN THE TWENTIETH GENERAL ASSEMBLY FROM THE COUNTIES OF PHILLIPS AND YUMA.

COUNTIES	Joseph B. Campbell (Dem.)	Chas. E. Damewood (Rep.-Prog.)
Phillips	469	595
Yuma	1,207	1,374
Totals.....	1,676	1,969
Damewood's majority		293

ABSTRACT OF VOTES CAST AT A GENERAL ELECTION HELD ON TUESDAY, NOVEMBER 3, A. D. 1914, FOR REPRESENTATIVE IN THE TWENTIETH GENERAL ASSEMBLY, FROM THE COUNTY OF PITKIN.

COUNTY	Thomas Anson (Prog.)	Charles Dalley (Dem.)	J. W. Deane (Rep.)	J. Edw. Turner (Soc.)
Pitkin	240	503	319	172
Dalley over Deane.....				184

ABSTRACT OF VOTES CAST

ABSTRACT OF VOTES CAST AT A GENERAL ELECTION HELD ON TUESDAY, NOVEMBER 3, A. D. 1914, FOR REPRESENTATIVE IN THE TWENTIETH GENERAL ASSEMBLY FROM THE COUNTIES OF PROWERS AND BACA.

COUNTIES	Evan R. Jones (Dem.-Prog.)	Ray McGrath (Rep.)
Baca	512	581
Prowers	1,121	1,623
Totals.....	1,633	2,204
McGrath's majority	571	

ABSTRACT OF VOTES CAST AT A GENERAL ELECTION HELD ON TUESDAY, NOVEMBER 3, A. D. 1914, FOR REPRESENTATIVES IN THE TWENTIETH GENERAL ASSEMBLY, FROM THE COUNTY OF PUEBLO. (FOUR TO ELECT).

A. S. Andrew, Republican.....	7,862
D. C. Cook, Socialist.....	1,034
P. C. Dunlap, Democratic.....	6,303
Hallet C. Gallup, Democratic.....	6,192
F. L. Higgins, Democratic.....	5,924
David W. Jones, Republican.....	6,237
C. M. Kohnman, Socialist.....	1,328
J. J. Laurenry, Progressive.....	268
D. P. McGrew, Socialist.....	818
J. M. Sare, Democratic.....	6,116
F. M. Stokes, Republican.....	6,706
F. E. Wallace, Republican.....	7,308
Mrs. Love Westfall, Socialist	954
J. U. Wilkins, Democratic	370
Andrew over Jones.....	1,625
Wallace over Jones.....	1,071
Stokes over Jones.....	469
Dunlap over Jones.....	66