

STATE OF COLORADO

# Abstract of Votes Cast

AT THE

## Primary Election

Held on the Eighth Day of September  
A. D. 1914

AND AT THE

## General Election

Held on Third Day of November.  
A. D. 1914

FOR

United States Senators, Congressmen, and State,  
Legislative and District Officers

ALSO THE

Proposed Constitutional Amendments  
Initiated and Referred Measures

COMPILED FROM OFFICIAL RETURNS

BY

JOHN E. RAMER  
Secretary of State

1915



DENVER, COLORADO

## ABSTRACT OF VOTES CAST

ABSTRACT OF VOTES CAST AT A PRIMARY ELECTION HELD ON  
TUESDAY, SEPTEMBER 8, A. D. 1914, FOR ATTORNEY GENERAL.

| COUNTIES        | Fred Farrar<br>(Dem.) | John I. Mullins<br>(Dem.) | T. S. McChesney<br>(Dem.) | Wm. B. Gobin<br>(Rep.) | Floyd E. Pendell<br>(Rep.) | Rees D. Rees<br>(Rep.) | Merle D. Vincent<br>(Prog.) |
|-----------------|-----------------------|---------------------------|---------------------------|------------------------|----------------------------|------------------------|-----------------------------|
| Adams .....     | 590                   | 305                       | 49                        | 39                     | 39                         | 45                     | 44                          |
| Alamosa .....   | 253                   | 135                       | 31                        | 124                    | 56                         | 63                     | 32                          |
| Arapahoe .....  | 386                   | 200                       | 50                        | 80                     | 40                         | 96                     | 259                         |
| Archuleta ..... | 90                    | 4                         | 18                        | 36                     | 26                         | 77                     | 8                           |
| Baca .....      | 100                   | 55                        | 31                        | 111                    | 44                         | 38                     | 5                           |
| Bent .....      | 186                   | 36                        | 23                        | 84                     | 22                         | 20                     | 38                          |
| Boulder .....   | 820                   | 419                       | 147                       | 409                    | 767                        | 281                    | 106                         |
| Chaffee .....   | 224                   | 117                       | 29                        | 69                     | 29                         | 49                     | 9                           |
| Cheyenne .....  | 165                   | 70                        | 33                        | 133                    | 70                         | 82                     | ...                         |
| Clear Creek ... | 227                   | 138                       | 44                        | 112                    | 57                         | 92                     | 11                          |
| Conejos .....   | 179                   | 71                        | 24                        | 201                    | 93                         | 133                    | 1                           |
| Costilla .....  | 66                    | 14                        | 6                         | 80                     | 26                         | 243                    | 4                           |
| Crowley .....   | 300                   | 83                        | 40                        | 133                    | 10                         | 18                     | 4                           |
| Custer .....    | 115                   | 55                        | 28                        | 23                     | 7                          | 12                     | 7                           |
| Delta .....     | 254                   | 74                        | 24                        | 126                    | 92                         | 49                     | 377                         |
| Denver .....    | 3,896                 | 4,644                     | 513                       | 2,353                  | 1,217                      | 5,025                  | 1,934                       |
| Dolores .....   | 69                    | 22                        | 5                         | 1                      | 3                          | 2                      | 7                           |
| Douglas .....   | 103                   | 34                        | 14                        | 117                    | 39                         | 64                     | 4                           |
| Eagle .....     | 230                   | 101                       | 46                        | 84                     | 72                         | 78                     | 28                          |
| Elbert .....    | 94                    | 52                        | 11                        | 60                     | 21                         | 75                     | 4                           |
| El Paso .....   | 864                   | 464                       | 210                       | 956                    | 322                        | 299                    | 541                         |
| Fremont .....   | 396                   | 201                       | 69                        | 306                    | 161                        | 204                    | 68                          |
| Garfield .....  | 505                   | 265                       | 81                        | 77                     | 49                         | 135                    | 29                          |
| Gilpin .....    | 106                   | 76                        | 27                        | 33                     | 30                         | 41                     | 9                           |
| Grand .....     | 50                    | 16                        | 6                         | 63                     | 39                         | 57                     | 3                           |
| Gunnison .....  | 195                   | 138                       | 30                        | 84                     | 44                         | 45                     | 5                           |
| Hinsdale .....  | 24                    | 8                         | ...                       | 42                     | 8                          | 12                     | ...                         |
| Huerfano .....  | 198                   | 305                       | 158                       | 950                    | 120                        | 126                    | 41                          |
| Jackson .....   | 18                    | 1                         | 3                         | 35                     | 15                         | 14                     | 3                           |
| Jefferson ..... | 365                   | 210                       | 39                        | 293                    | 561                        | 423                    | 91                          |
| Kiowa .....     | 131                   | 16                        | 2                         | 52                     | 26                         | 9                      | 29                          |
| Kit Carson .... | 254                   | 112                       | 41                        | 122                    | 77                         | 91                     | 52                          |

ABSTRACT OF VOTES CAST AT A PRIMARY ELECTION HELD ON  
TUESDAY, SEPTEMBER 8, A. D. 1914, FOR ATTORNEY GENERAL  
—Continued.

| COUNTIES       | Fred Farrar<br>(Dem.) | John I. Mullins<br>(Dem.) | T. S. McChesney<br>(Dem.) | Wm. B. Gobin<br>(Rep.) | Floyd E. Pendell<br>(Rep.) | Rees D. Rees<br>(Rep.) | Merle D. Vincent<br>(Prog.) |
|----------------|-----------------------|---------------------------|---------------------------|------------------------|----------------------------|------------------------|-----------------------------|
| Lake .....     | 231                   | 377                       | 29                        | 254                    | 119                        | 214                    | 42                          |
| La Plata ..... | 397                   | 215                       | 88                        | 170                    | 88                         | 149                    | 13                          |
| Larimer .....  | 421                   | 49                        | 13                        | 395                    | 406                        | 249                    | 142                         |
| Las Animas.... | 255                   | 268                       | 1,486                     | 1,003                  | 334                        | 493                    | 41                          |
| Lincoln .....  | 195                   | 86                        | 32                        | 257                    | 189                        | 142                    | 12                          |
| Logan .....    | 196                   | 141                       | 28                        | 195                    | 255                        | 79                     | 163                         |
| Mesa .....     | 370                   | 153                       | 49                        | 125                    | 68                         | 84                     | 228                         |
| Mineral .....  | 69                    | 15                        | 7                         | 19                     | 6                          | 16                     | ...                         |
| Moffat .....   | 55                    | 16                        | 10                        | 67                     | 25                         | 19                     | 6                           |
| Montezuma ...  | 427                   | 152                       | 69                        | 37                     | 24                         | 15                     | 8                           |
| Montrose ..... | 455                   | 222                       | 67                        | 159                    | 98                         | 100                    | 31                          |
| Morgan .....   | 116                   | 30                        | 8                         | 93                     | 735                        | 67                     | 69                          |
| Otero .....    | 777                   | 201                       | 119                       | 411                    | 121                        | 67                     | 32                          |
| Ouray .....    | 198                   | 95                        | 23                        | 61                     | 23                         | 47                     | 4                           |
| Park .....     | 154                   | 89                        | 15                        | 38                     | 23                         | 32                     | 4                           |
| Phillips ..... | 84                    | 39                        | 10                        | 62                     | 66                         | 28                     | 41                          |
| Pitkin .....   | 199                   | 91                        | 39                        | 32                     | 17                         | 21                     | 16                          |
| Prowers .....  | 166                   | 26                        | 37                        | 201                    | 42                         | 74                     | 114                         |
| Pueblo .....   | 2,637                 | 1,391                     | 492                       | 1,399                  | 478                        | 892                    | 86                          |
| Rio Blanco.... | 89                    | 36                        | 15                        | 24                     | 38                         | 12                     | 2                           |
| Rio Grande.... | 157                   | 19                        | 13                        | 134                    | 122                        | 95                     | 10                          |
| Routt .....    | 201                   | 47                        | 51                        | 66                     | 36                         | 39                     | 10                          |
| Saguache ..... | 179                   | 61                        | 20                        | 154                    | 79                         | 49                     | 11                          |
| San Juan ..... | 59                    | 21                        | 12                        | 54                     | 25                         | 38                     | 13                          |
| San Miguel.... | 359                   | 132                       | 46                        | 75                     | 42                         | 36                     | 5                           |
| Sedgwick ..... | 35                    | 18                        | 4                         | 37                     | 24                         | 22                     | 143                         |
| Summit .....   | 133                   | 57                        | 9                         | 25                     | 7                          | 20                     | 2                           |
| Teller .....   | 1,496                 | 703                       | 314                       | 92                     | 62                         | 101                    | 112                         |
| Washington ... | 230                   | 68                        | 34                        | 89                     | 55                         | 36                     | 23                          |

## ABSTRACT OF VOTES CAST

ABSTRACT OF VOTES CAST AT A PRIMARY ELECTION HELD ON  
TUESDAY, SEPTEMBER 8, A. D. 1914, FOR ATTORNEY GENERAL.  
—Continued.

| COUNTIES                                | Fred Farrar<br>(Dem.) | John I. Mullins<br>(Dem.) | T. S. McChesney<br>(Dem.) | Wm. B. Gobin<br>(Rep.) | Floyd E. Pendell<br>(Rep.) | Rees D. Rees<br>(Rep.) | Merle D. Vincent<br>(Prog.) |
|-----------------------------------------|-----------------------|---------------------------|---------------------------|------------------------|----------------------------|------------------------|-----------------------------|
| Weld .....                              | 578                   | 212                       | 62                        | 703                    | 472                        | 407                    | 318                         |
| Yuma .....                              | 186                   | 80                        | 28                        | 152                    | 99                         | 68                     | 37                          |
| Totals .....                            | 22,557                | 13,551                    | 5,061                     | 13,971                 | 8,360                      | 11,709                 | 5,491                       |
| Scattering, Democratic, 3 candidates, 3 |                       |                           |                           |                        |                            |                        |                             |
| Scattering, Republican, 2 candidates, 2 |                       |                           |                           |                        |                            |                        |                             |
| Farrar over Mullins.....9,006           |                       |                           |                           |                        |                            |                        |                             |
| Gobin over Rees.....2,262               |                       |                           |                           |                        |                            |                        |                             |

ABSTRACT OF VOTES CAST AT A PRIMARY ELECTION HELD ON  
TUESDAY, SEPTEMBER 8, A. D. 1914, FOR SUPERINTENDENT OF  
PUBLIC INSTRUCTION.

| COUNTIES          | Mary C. C. Bradford<br>(Dem.) | Katherine L. Craig<br>(Rep.) | Florence E. Dick<br>(Prog.) | Mary E. Todd<br>(Prog.) |
|-------------------|-------------------------------|------------------------------|-----------------------------|-------------------------|
| Adams .....       | 891                           | 123                          | 21                          | 25                      |
| Alamosa .....     | 371                           | 233                          | 19                          | 13                      |
| Arapahoe .....    | 568                           | 215                          | 170                         | 102                     |
| Archuleta .....   | 91                            | 132                          | 1                           | 5                       |
| Baca .....        | 186                           | 203                          | 4                           | ...                     |
| Bent .....        | 214                           | 120                          | 27                          | 10                      |
| Boulder .....     | 1,289                         | 1,389                        | 77                          | 37                      |
| Chaffee .....     | 348                           | 157                          | 4                           | 5                       |
| Cheyenne .....    | 260                           | 285                          | 1                           | ...                     |
| Clear Creek ..... | 353                           | 263                          | 5                           | 6                       |
| Conejos .....     | 246                           | 415                          | 1                           | ...                     |
| Costilla .....    | 78                            | 333                          | 3                           | 1                       |
| Crowley .....     | 358                           | 156                          | 5                           | 1                       |
| Custer .....      | 196                           | 46                           | 8                           | ...                     |
| Delta .....       | 326                           | 285                          | 208                         | 95                      |
| Denver .....      | 6,415                         | 7,684                        | 1,132                       | 812                     |
| Dolores .....     | 113                           | 4                            | 2                           | 5                       |
| Douglas .....     | 153                           | 231                          | 3                           | ...                     |
| Eagle .....       | 314                           | 245                          | 22                          | 6                       |
| Elbert .....      | 148                           | 167                          | 1                           | 3                       |
| El Paso .....     | 1,497                         | 1,619                        | 364                         | 141                     |
| Fremont .....     | 589                           | 673                          | 44                          | 25                      |
| Garfield .....    | 822                           | 246                          | 21                          | 11                      |
| Gilpin .....      | 181                           | 104                          | 5                           | 4                       |
| Grand .....       | 67                            | 148                          | 1                           | 1                       |
| Gunnison .....    | 342                           | 189                          | 3                           | 2                       |
| Hinsdale .....    | 36                            | 56                           | ...                         | ...                     |
| Huerfano .....    | 626                           | 1,194                        | 26                          | 11                      |
| Jackson .....     | 24                            | 66                           | ...                         | 3                       |
| Jefferson .....   | 581                           | 1,286                        | 66                          | 31                      |
| Kiowa .....       | 152                           | 82                           | 19                          | 13                      |

ABSTRACT OF VOTES CAST AT A PRIMARY ELECTION HELD ON  
TUESDAY, SEPTEMBER 8, A. D. 1914, FOR SUPERINTENDENT OF  
PUBLIC INSTRUCTION.—Continued.

| COUNTIES         | Mary C. C. Bradford<br>(Dem.) | Katherine L. Craig<br>(Rep.) | Florence E. Dick<br>(Prog.) | Mary E. Todd<br>(Prog.) |
|------------------|-------------------------------|------------------------------|-----------------------------|-------------------------|
| Kit Carson ..... | 416                           | 298                          | 30                          | 24                      |
| Lake .....       | 542                           | 570                          | 30                          | 14                      |
| La Plata .....   | 630                           | 411                          | 10                          | 4                       |
| Larimer .....    | 420                           | 1,134                        | 91                          | 59                      |
| Las Animas ..... | 1,766                         | 1,775                        | 33                          | 18                      |
| Lincoln .....    | 312                           | 586                          | 5                           | 6                       |
| Logan .....      | 361                           | 545                          | 88                          | 88                      |
| Mesa .....       | 560                           | 279                          | 142                         | 71                      |
| Mineral .....    | 81                            | 43                           | ...                         | ...                     |
| Moffat .....     | 85                            | 110                          | 4                           | 1                       |
| Montezuma .....  | 637                           | 79                           | 9                           | 1                       |
| Montrose .....   | 704                           | 386                          | 23                          | 4                       |
| Morgan .....     | 153                           | 699                          | 44                          | 23                      |
| Otero .....      | 983                           | 552                          | 22                          | 11                      |
| Ouray .....      | 273                           | 132                          | 2                           | 4                       |
| Park .....       | 242                           | 89                           | 2                           | 1                       |
| Phillips .....   | 143                           | 144                          | 35                          | 12                      |
| Pitkin .....     | 313                           | 74                           | 10                          | 5                       |
| Prowers .....    | 219                           | 283                          | 80                          | 43                      |
| Pueblo .....     | 3,907                         | 2,570                        | 59                          | 27                      |
| Rio Blanco ..... | 145                           | 74                           | 3                           | ...                     |
| Rio Grande ..... | 179                           | 356                          | 7                           | 4                       |
| Routt .....      | 265                           | 147                          | 4                           | 4                       |
| Saguache .....   | 242                           | 272                          | 10                          | 2                       |
| San Juan .....   | 77                            | 101                          | 8                           | 3                       |
| San Miguel ..... | 479                           | 146                          | 4                           | 3                       |
| Sedgwick .....   | 57                            | 94                           | 127                         | 46                      |
| Summit .....     | 188                           | 55                           | ...                         | 2                       |
| Teller .....     | 2,159                         | 276                          | 86                          | 33                      |
| Washington ..... | 343                           | 172                          | 17                          | 7                       |

ABSTRACT OF VOTES CAST AT A PRIMARY ELECTION HELD ON  
TUESDAY, SEPTEMBER 8, A. D. 1914, FOR SUPERINTENDENT OF  
PUBLIC INSTRUCTION.—Continued.

| COUNTIES   | Mary C. C. Bradford<br>(Dem.) | Katherine L. Craig<br>(Rep.) | Florence E. Dick<br>(Prog.) | Mary E. Todd<br>(Prog.) |
|------------|-------------------------------|------------------------------|-----------------------------|-------------------------|
| Weld ..... | 795                           | 1,613                        | 212                         | 109                     |
| Yuma ..... | 293                           | 369                          | 33                          | 9                       |
|            | <hr/>                         | <hr/>                        | <hr/>                       | <hr/>                   |
|            | 35,804                        | 32,783                       | 3,493                       | 2,006                   |

Scattering, Democratic, 23 candidates, 29

Scattering, Republican, 11 candidates, 14

Scattering, Progressive, 4 candidates, 5

Dick over Todd..... 1,487

ABSTRACT OF VOTES CAST AT A PRIMARY ELECTION HELD ON  
TUESDAY, SEPTEMBER 8, A. D. 1914, FOR REGENTS OF THE UNI-  
VERSITY OF COLORADO, FOR THE FULL TERM.

| COUNTY         | Minnie L. Harding<br>(Dem.) | E. D. Webb<br>(Dem.) | Clifford C. Parks<br>(Rep.) | Thomas L.<br>Wilkinson (Rep.) | Randolph Cook<br>(Prog.) | E. Stewart<br>(Prog.) |
|----------------|-----------------------------|----------------------|-----------------------------|-------------------------------|--------------------------|-----------------------|
| Adams .....    | 719                         | ...                  | 79                          | 36                            | 42                       | ...                   |
| Alamosa ...    | 319                         | ...                  | 162                         | 70                            | 28                       | ...                   |
| Arapahoe ...   | 434                         | 2                    | 151                         | 102                           | 239                      | ...                   |
| Archuleta ..   | 81                          | ...                  | 62                          | 72                            | ...                      | ...                   |
| Baca .....     | 171                         | ...                  | 152                         | 101                           | 5                        | ...                   |
| Bent .....     | 186                         | ...                  | 93                          | 69                            | 35                       | ...                   |
| Boulder ....   | 1,099                       | 64                   | 1,164                       | 923                           | 96                       | ...                   |
| Chaffee .....  | 330                         | ...                  | 114                         | 54                            | 8                        | ...                   |
| Cheyenne ...   | 233                         | ...                  | 173                         | 145                           | ...                      | ...                   |
| Clear Creek..  | 297                         | ...                  | 185                         | 68                            | 11                       | ...                   |
| Conejos .....  | 210                         | ...                  | 301                         | 156                           | ...                      | ...                   |
| Costilla ..... | 75                          | ...                  | 301                         | 144                           | ...                      | ...                   |
| Crowley ....   | 304                         | ...                  | 130                         | 90                            | 4                        | ...                   |
| Custer .....   | 167                         | ...                  | 31                          | 21                            | 6                        | ...                   |
| Delta .....    | 288                         | ...                  | 191                         | 131                           | 287                      | ...                   |
| Denver .....   | 5,109                       | 2                    | 5,184                       | 5,329                         | 1,683                    | ...                   |
| Dolores ....   | 85                          | ...                  | 2                           | 4                             | 5                        | ...                   |
| Douglas ....   | 135                         | ...                  | 179                         | 117                           | 3                        | ...                   |
| Eagle .....    | 322                         | ...                  | 194                         | 108                           | 23                       | ...                   |
| Elbert .....   | 135                         | ...                  | 124                         | 91                            | 4                        | ...                   |
| El Paso ....   | 1,271                       | ...                  | 1,258                       | 838                           | 410                      | ...                   |
| Fremont ...    | 536                         | ...                  | 445                         | 408                           | 59                       | ...                   |
| Garfield ....  | 709                         | ...                  | 241                         | 112                           | 26                       | ...                   |
| Gilpin .....   | 156                         | ...                  | 61                          | 43                            | 10                       | ...                   |
| Grand .....    | 68                          | ...                  | 118                         | 43                            | 3                        | ...                   |
| Gunnison ...   | 293                         | ...                  | 141                         | 86                            | 5                        | ...                   |
| Hinsdale ...   | 33                          | ...                  | 47                          | 30                            | ...                      | ...                   |
| Huerfano ...   | 582                         | ...                  | 984                         | 835                           | 30                       | ...                   |
| Jackson ....   | 23                          | ...                  | 50                          | 21                            | 3                        | ...                   |
| Jefferson ...  | 504                         | ...                  | 925                         | 716                           | 85                       | ...                   |
| Kiowa .....    | 138                         | ...                  | 73                          | 46                            | 31                       | ...                   |



ABSTRACT OF VOTES CAST

ABSTRACT OF VOTES CAST AT A GENERAL ELECTION HELD ON TUESDAY, SEPTEMBER 8, A. D. 1914, FOR REGENTS OF THE UNIVERSITY OF COLORADO, FOR THE FULL TERM.—Continued.

| COUNTY        | Minnie L. Harding<br>(Dem.) | E. D. Webb<br>(Dem.) | Clifford C. Parks<br>(Dem.) | Thomas L. Wilkinson<br>(Rep.) | Randolph Cook<br>(Prog.) | C. E. Stewart<br>(Prog.) |
|---------------|-----------------------------|----------------------|-----------------------------|-------------------------------|--------------------------|--------------------------|
| Kit Carson..  | 366                         | ...                  | 183                         | 169                           | 52                       | ...                      |
| Lake .....    | 470                         | ...                  | 412                         | 279                           | 39                       | ...                      |
| La Plata....  | 76                          | ...                  | 318                         | 205                           | 12                       | ...                      |
| Larimer ....  | 366                         | ...                  | 762                         | 586                           | 133                      | ...                      |
| Las Animas..  | 1,658                       | ...                  | 1,346                       | 422                           | 46                       | ...                      |
| Lincoln ....  | 296                         | ...                  | 435                         | 309                           | 10                       | ...                      |
| Logan .....   | 331                         | ...                  | 417                         | 191                           | 150                      | 3                        |
| Mesa .....    | 490                         | ...                  | 251                         | 107                           | 199                      | ...                      |
| Mineral ....  | 68                          | ...                  | 34                          | 7                             | ...                      | ...                      |
| Moffat .....  | 75                          | ...                  | 75                          | 48                            | 5                        | ...                      |
| Montezuma...  | 545                         | ...                  | 48                          | 34                            | 8                        | ...                      |
| Montrose ...  | 642                         | ...                  | 257                         | 107                           | 25                       | ...                      |
| Morgan ....   | 135                         | ...                  | 537                         | 312                           | 63                       | 22                       |
| Otero .....   | 875                         | ...                  | 441                         | 354                           | 30                       | ...                      |
| Ouray .....   | 234                         | ...                  | 95                          | 53                            | 3                        | ...                      |
| Park .....    | 210                         | ...                  | 65                          | 50                            | 3                        | ...                      |
| Phillips .... | 130                         | ...                  | 117                         | 67                            | 36                       | ...                      |
| Pitkin .....  | 247                         | ...                  | 63                          | 39                            | 15                       | ...                      |
| Prowers ....  | 213                         | ...                  | 245                         | 174                           | 115                      | ...                      |
| Pueblo .....  | 3,543                       | ...                  | 2,155                       | 1,601                         | 77                       | ...                      |
| Rio Blanco... | 135                         | ...                  | 70                          | 29                            | 3                        | ...                      |
| Rio Grande..  | 149                         | ...                  | 248                         | 174                           | 9                        | ...                      |
| Routt .....   | 229                         | ...                  | 122                         | 71                            | 7                        | ...                      |
| Saguache ...  | 234                         | ...                  | 208                         | 133                           | 9                        | ...                      |
| San Juan....  | 74                          | ...                  | 83                          | 58                            | 11                       | ...                      |
| San Miguel..  | 426                         | ...                  | 114                         | 25                            | 2                        | ...                      |
| Sedgwick ..   | 48                          | ...                  | 64                          | 36                            | 137                      | ...                      |
| Summit ....   | 167                         | ...                  | 49                          | 27                            | 1                        | ...                      |
| Teller .....  | 1,781                       | ...                  | 212                         | 162                           | 97                       | ...                      |
| Washington..  | 304                         | ...                  | 135                         | 65                            | 22                       | ...                      |

## ABSTRACT OF VOTES CAST

ABSTRACT OF VOTES CAST AT A PRIMARY ELECTION HELD ON  
TUESDAY, SEPTEMBER 8, A. D. 1914, FOR REGENTS OF THE UNI-  
VERSITY OF COLORADO, FOR THE FULL TERM.—Continued.

| COUNTY     | Minnie L. Harding<br>(Dem.) | E. D. Webb<br>(Dem.) | Clifford C. Parks<br>(Rep.) | Thomas L.<br>Wilkinson (Rep.) | Randolph Cook<br>(Prog.) | C. E. Stewart<br>(Prog.) |
|------------|-----------------------------|----------------------|-----------------------------|-------------------------------|--------------------------|--------------------------|
| Weld ..... | 705                         | ...                  | 1,240                       | 983                           | 289                      | ...                      |
| Yuma ..... | 256                         | ...                  | 228                         | 80                            | 30                       | 4                        |
|            | <hr/> 30,490                | <hr/> 68             | <hr/> 24,344                | <hr/> 17,966                  | <hr/> 4,777              | <hr/> 29                 |

Scattering, Democratic, 99 candidates, 187

Scattering, Republican, 20 candidates, 35

Scattering, Progressive, 25 candidates, 69

ABSTRACT OF VOTES CAST AT A PRIMARY ELECTION HELD ON TUESDAY, SEPTEMBER 8, A. D. 1914, FOR REGENT OF THE UNIVERSITY OF COLORADO, TO FILL VACANCY.

| COUNTIES        | E. D. Webb<br>(Dem.) | Walter M. Appel<br>(Dem.) | A. D. Parker<br>(Rep.) | Thomas L.<br>Wilkinson (Rep.) | Chas. R. Dudley<br>(Rep.) | C. E. Stewart<br>(Prog.) | Randolph Cook<br>(Prog.) |
|-----------------|----------------------|---------------------------|------------------------|-------------------------------|---------------------------|--------------------------|--------------------------|
| Boulder .....   | 127                  | ...                       | 64                     | ...                           | ...                       | ...                      | ...                      |
| Denver .....    | 8                    | 5                         | ...                    | 31                            | 19                        | 5                        | 5                        |
| Jefferson ..... | ...                  | ...                       | ...                    | ...                           | ...                       | 1                        | ...                      |
| Logan .....     | ...                  | ...                       | ...                    | ...                           | ...                       | 6                        | ...                      |
| Pueblo .....    | ...                  | ...                       | 2                      | ...                           | ...                       | ...                      | ...                      |
| Routt .....     | 20                   | ...                       | ...                    | ...                           | ...                       | ...                      | ...                      |
| Washington ...  | ...                  | ...                       | ...                    | ...                           | ...                       | 4                        | ...                      |
|                 | <hr/> 155            | <hr/> 5                   | <hr/> 66               | <hr/> 31                      | <hr/> 19                  | <hr/> 16                 | <hr/> 5                  |

Scattering, Democratic, 103 candidates, 196

Scattering, Republican, 112 candidates, 202

Scattering, Progressive, 36 candidates, 48

There having been no candidates designated, the above were written in by the voters, which accounts for so few counties shown as having made returns.

## ABSTRACT OF VOTES CAST

ABSTRACT OF VOTES CAST AT A GENERAL ELECTION HELD ON  
TUESDAY, NOVEMBER 3, A. D. 1914, FOR DISTRICT JUDGE, OF  
TWELFTH JUDICIAL DISTRICT (TO FILL VACANCY).

| COUNTIES                            | John S. Palmer<br>(Law) | Jesse C. Wiley:<br>(Ind.) |
|-------------------------------------|-------------------------|---------------------------|
| Alamosa .....                       | 707                     | 642                       |
| Conejos .....                       | 854                     | 846                       |
| Costilla .....                      | 557                     | 273                       |
| Mineral .....                       | 142                     | 240                       |
| Rio Grande .....                    | 660                     | 1,279                     |
| Saguache .....                      | 878                     | 761                       |
| Totals.....                         | 3,798                   | 4,041                     |
| Majority for Wiley over Palmer..... |                         | 243                       |

ABSTRACT OF VOTES CAST AT A GENERAL ELECTION HELD ON  
TUESDAY, NOVEMBER 3, A. D. 1914, FOR STATE SENATORS FROM  
THE FIRST SENATORIAL DISTRICT.

City and County of Denver.

|                                       |        |
|---------------------------------------|--------|
| Julius Aichele, Democratic .....      | 15,148 |
| T. J. Brown, Socialist.....           | 3,660  |
| Frank L. Dodge, Republican.....       | 25,476 |
| William R. Eaton, Republican.....     | 25,283 |
| Harvey E. Garman, no ass'by.....      | 5,483  |
| Charles B. Hamilton, Democratic.....  | 22,796 |
| Barney Haughey, no ass'by.....        | 702    |
| John Hecker, L., O. and J.....        | 3,125  |
| John E. Holmberg, Republican.....     | 22,182 |
| Hattie K. Howard, Progressive.....    | 6,732  |
| Francis J. Knauss, Republican .....   | 24,029 |
| Charles N. Knowles, Progressive ..... | 9,022  |
| Nicholas Ludwig, no ass'by.....       | 2,130  |
| Phillip McCarty, Democratic .....     | 17,055 |
| Martin H. Mitchell, Democratic .....  | 16,469 |
| John Nitsch, Socialist.....           | 2,913  |
| Maude E. Sanders, Progressive .....   | 8,051  |
| John A. Sells, Socialist .....        | 2,750  |
| Chester E. Smedley, Progressive ..... | 10,588 |
| Fred Underhill, Socialist .....       | 3,202  |
|                                       |        |
| Dodge over Holmberg.....              | 3,294  |
| Eaton over Holmberg.....              | 3,101  |
| Knauss over Holmberg.....             | 1,847  |
| Hamilton over Holmberg.....           | 614    |

## ABSTRACT OF VOTES CAST

ABSTRACT OF VOTES CAST AT A GENERAL ELECTION HELD ON  
TUESDAY, NOVEMBER 3, A. D. 1914, FOR STATE SENATOR FROM  
THE SECOND SENATORIAL DISTRICT.

| COUNTY                       | H. G. DeTienne<br>(Dem.) | Wilkins O.<br>Peterson (Rep.) | C. B. Anthony<br>(Soc.) |
|------------------------------|--------------------------|-------------------------------|-------------------------|
| Pueblo .....                 | 4,955                    | 6,906                         | 701                     |
| Peterson over De Tienne..... |                          | 1,951                         |                         |

ABSTRACT OF VOTES CAST AT A GENERAL ELECTION HELD ON  
TUESDAY, NOVEMBER 3, A. D. 1914, FOR STATE SENATOR FROM  
THE THIRD SENATORIAL DISTRICT.

| COUNTY                      | David Elliott<br>(Rep.) | John T. Kavanaugh<br>(Dem.) | C. A. Lemmers<br>(Prog.) | M. J. Acton<br>(Soc.) |
|-----------------------------|-------------------------|-----------------------------|--------------------------|-----------------------|
| El Paso .....               | 5,298                   | 4,215                       | 3,435                    | 731                   |
| Elliott over Kavanaugh..... |                         |                             | 1,083.                   |                       |

ABSTRACT OF VOTES CAST AT A GENERAL ELECTION HELD ON TUESDAY, NOVEMBER 3, A. D. 1914, FOR STATE SENATOR FROM THE SIXTH SENATORIAL DISTRICT.

| COUNTIES                  | William J. Candlish<br>(Rep.-Prog.) | Walter L. Philbin<br>(Dem.) |
|---------------------------|-------------------------------------|-----------------------------|
| Chaffee .....             | 1,391                               | 1,393                       |
| Lake .....                | 1,806                               | 1,638                       |
|                           | 3,197                               | 3,031                       |
| Candlish's majority ..... |                                     | 166                         |

ABSTRACT OF VOTES CAST AT A GENERAL ELECTION HELD ON TUESDAY, NOVEMBER 3, A. D. 1914, FOR STATE SENATOR FROM THE SEVENTH SENATORIAL DISTRICT.

| COUNTY                    | B. F. Early<br>(Dem.) | James W. Gault<br>(Prog.) | Robert E.<br>Winbourne (Rep.) | N. N. Westfall<br>(Soc.) |
|---------------------------|-----------------------|---------------------------|-------------------------------|--------------------------|
| Weld .....                | 3,969                 | 1,478                     | 5,502                         | 500                      |
| Winbourne over Early..... |                       |                           |                               | 1,533                    |

## ABSTRACT OF VOTES CAST

ABSTRACT OF VOTES CAST AT A GENERAL ELECTION HELD ON  
TUESDAY, NOVEMBER 3, A. D. 1914, FOR STATE SENATOR FROM  
THE TENTH SENATORIAL DISTRICT.

| COUNTY                | Fred W. Stow<br>(Dem.) | C. F. Wilkin<br>(Rep.-Prog.) | J. H. Mayfield<br>(Soc.) |
|-----------------------|------------------------|------------------------------|--------------------------|
| Larimer .....         | 2,631                  | 3,271                        | 444                      |
| Wilkin over Stow..... |                        | 640                          |                          |

ABSTRACT OF VOTES CAST AT A GENERAL ELECTION HELD ON  
TUESDAY, NOVEMBER 3, A. D. 1914, FOR STATE SENATOR FROM  
THE TWELFTH SENATORIAL DISTRICT.

| COUNTIES               | Clarence O.<br>Finch (Dem.) | Henry A. Klingner<br>(Prog.) | O. L. Mitten<br>(Rep.) |
|------------------------|-----------------------------|------------------------------|------------------------|
| Logan .....            | 1,304                       | 303                          | 1,433                  |
| Phillips .....         | 439                         | 125                          | 521                    |
| Sedgwick .....         | 358                         | 168                          | 406                    |
| Washington .....       | 691                         | 195                          | 853                    |
| Yuma .....             | 964                         | 707                          | 1,141                  |
|                        | <hr/>                       | <hr/>                        | <hr/>                  |
|                        | 3,756                       | 1,498                        | 4,354                  |
| Mitten over Finch..... |                             | 598                          |                        |



ABSTRACT OF VOTES CAST

ABSTRACT OF VOTES CAST AT A GENERAL ELECTION HELD ON TUESDAY, NOVEMBER 3, A. D. 1914, FOR STATE SENATOR FROM THE FOURTEENTH SENATORIAL DISTRICT.

| COUNTIES                | Charles Hayden<br>(Rep.) | A. D. Mackenzie<br>(Dem.-Prog.) |
|-------------------------|--------------------------|---------------------------------|
| Costilla .....          | 729                      | 356                             |
| Custer .....            | 315                      | 589                             |
| Huerfano .....          | 2,348                    | 2,132                           |
|                         | <hr/>                    | <hr/>                           |
|                         | 3,392                    | 3,077                           |
| Hayden's majority ..... |                          | 315                             |

ABSTRACT OF VOTES CAST AT A GENERAL ELECTION HELD ON TUESDAY, NOVEMBER 3, A. D. 1914, FOR STATE SENATOR FROM THE FIFTEENTH SENATORIAL DISTRICT.

| COUNTIES              | Frank H. Means<br>(Rep.) | Byron A. Roloson<br>(Dem.) |
|-----------------------|--------------------------|----------------------------|
| Mineral .....         | 147                      | 210                        |
| Rio Grande .....      | 1,182                    | 881                        |
| Saguache .....        | 1,102                    | 715                        |
|                       | <hr/>                    | <hr/>                      |
|                       | 2,431                    | 1,806                      |
| Means' majority ..... |                          | 625                        |

ABSTRACT OF VOTES CAST

ABSTRACT OF VOTES CAST AT A GENERAL ELECTION HELD ON TUESDAY, NOVEMBER 3, A. D. 1914, FOR STATE SENATOR FROM THE SIXTEENTH SENATORIAL DISTRICT.

| COUNTY                 | Erman W. Kluge<br>(Dem.) | Avery C. Newton<br>(Prog.) | F. Barnard Welsh<br>(Rep.) | E. M. Cline<br>(Soc.) |
|------------------------|--------------------------|----------------------------|----------------------------|-----------------------|
| Mesa .....             | 2,522                    | 1,543                      | 1,375                      | 929                   |
| Kluge over Newton..... |                          |                            |                            | 979                   |

ABSTRACT OF VOTES CAST AT A GENERAL ELECTION HELD ON TUESDAY, NOVEMBER 3, A. D. 1914, FOR STATE SENATOR FROM THE SEVENTEENTH SENATORIAL DISTRICT.

| COUNTIES                      | Fred Schermerhorn<br>(Dem.) | S. Wonder<br>(Rep.) |
|-------------------------------|-----------------------------|---------------------|
| Dolores .....                 | 141                         | 65                  |
| Montrose .....                | 1,755                       | 1,728               |
| San Miguel .....              | 943                         | 810                 |
|                               | <hr/>                       | <hr/>               |
|                               | 2,839                       | 2,603               |
| Schermerhorn's majority ..... |                             | 236                 |

ABSTRACT OF VOTES CAST

ABSTRACT OF VOTES CAST AT A GENERAL ELECTION HELD ON TUESDAY, NOVEMBER 3, A. D. 1914, FOR STATE SENATOR FROM THE EIGHTEENTH SENATORIAL DISTRICT.

| COUNTIES                | Herbert E. Curran<br>(Rep.) | John H. Slattery<br>(Dem.) |
|-------------------------|-----------------------------|----------------------------|
| Archuleta .....         | 453                         | 464                        |
| Hinsdale .....          | 127                         | 115                        |
| Ouray .....             | 781                         | 519                        |
| San Juan .....          | 436                         | 433                        |
|                         | <hr/>                       | <hr/>                      |
|                         | 1,797                       | 1,531                      |
| Curran's majority ..... |                             | 266                        |

ABSTRACT OF VOTES CAST AT A GENERAL ELECTION HELD ON TUESDAY, NOVEMBER 3, A. D. 1914, FOR STATE SENATOR FROM THE TWENTIETH SENATORIAL DISTRICT.

| COUNTIES              | George Lewis<br>(Dem.) | Melville B. Rapp<br>(Rep.-Prog.) | W. B. Butler<br>(Soc.) |
|-----------------------|------------------------|----------------------------------|------------------------|
| Park .....            | 475                    | 367                              | 48                     |
| Teller .....          | 3,406                  | 1,459                            | 437                    |
|                       | <hr/>                  | <hr/>                            | <hr/>                  |
|                       | 3,881                  | 1,826                            | 485                    |
| Lewis over Rapp ..... |                        |                                  | 2,055                  |

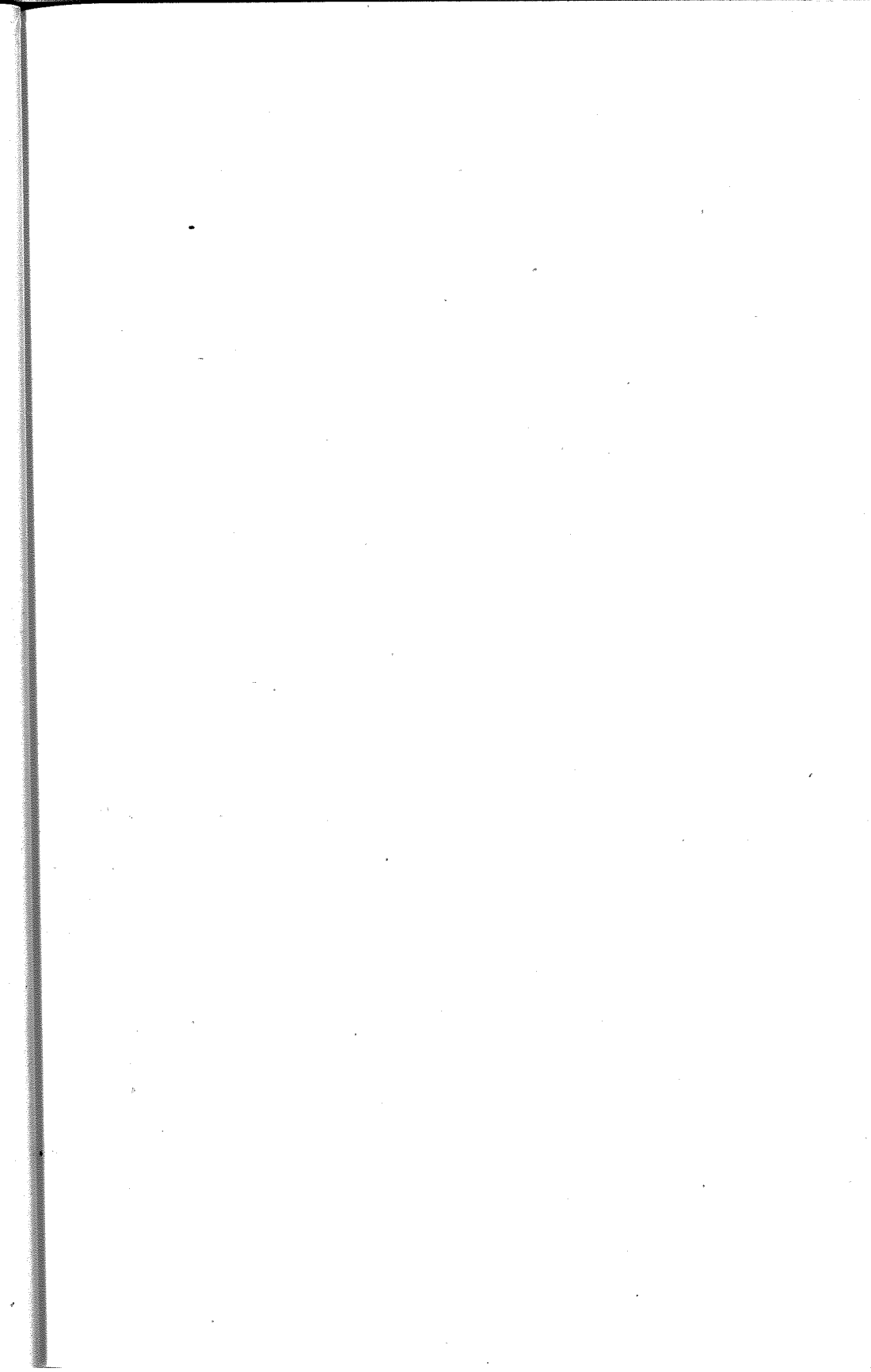
## ABSTRACT OF VOTES CAST

ABSTRACT OF VOTES CAST AT A GENERAL ELECTION HELD ON  
TUESDAY, NOVEMBER 3, A. D. 1914, FOR STATE SENATOR FROM  
THE TWENTY-FIFTH SENATORIAL DISTRICT.

| COUNTIES               | John S. Hasty<br>(Rep.) | M. M. Simpson<br>(Dem.-Prog.) |
|------------------------|-------------------------|-------------------------------|
| Baca .....             | 594                     | 510                           |
| Bent .....             | 907                     | 826                           |
| Kiowa .....            | 573                     | 665                           |
| Prowers .....          | 1,607                   | 1,272                         |
|                        | <hr/>                   | <hr/>                         |
|                        | 3,681                   | 3,273                         |
| Hasty's majority ..... |                         | 408                           |

ABSTRACT OF VOTES CAST AT A GENERAL ELECTION HELD ON  
TUESDAY, NOVEMBER 3, A. D. 1914, FOR STATE SENATOR FROM  
THE TWENTY-SEVENTH SENATORIAL DISTRICT.

| COUNTIES                    | W. H. Abbott<br>(Prog.) | John F. Dickinson<br>(Rep.) | William D. Reilly<br>(Dem.) |
|-----------------------------|-------------------------|-----------------------------|-----------------------------|
| Cheyenne .....              | 72                      | 553                         | 351                         |
| Douglas .....               | 41                      | 556                         | 608                         |
| Elbert .....                | 115                     | 605                         | 1,062                       |
| Kit Carson .....            | 437                     | 735                         | 615                         |
| Lincoln .....               | 123                     | 949                         | 929                         |
|                             | <hr/>                   | <hr/>                       | <hr/>                       |
|                             | 788                     | 3,398                       | 3,565                       |
| Reilly over Dickinson ..... |                         |                             | 167                         |



## ABSTRACT OF VOTES CAST

ABSTRACT OF VOTES CAST AT A GENERAL ELECTION HELD ON  
TUESDAY, NOVEMBER 3, A. D. 1914, FOR REPRESENTATIVE IN  
THE TWENTIETH GENERAL ASSEMBLY FROM THE CITY AND  
COUNTY OF DENVER.

|                                          |        |
|------------------------------------------|--------|
| Joseph S. Baker, Progressive.....        | 14,191 |
| Edward B. Bartholic, Socialist.....      | 3,359  |
| George M. Bergen, No Ass'by.....         | 1,193  |
| Morris Berkowitz, Socialist.....         | 3,143  |
| Carroll M. Bills, Republican.....        | 25,320 |
| Herman A. Bolster, No Ass'by.....        | 1,127  |
| Rudolph Borchardt, Tax Payer.....        | 4,201  |
| William T. Boyd, Progressive.....        | 7,350  |
| Joseph B. Cobbs, No. Ass'by.....         | 1,447  |
| Albert Gallatin Craig, Democrat.....     | 18,038 |
| John F. Critchfield, Socialist.....      | 3,247  |
| John Dietrich, Democrat.....             | 21,076 |
| George B. Drake, Republican.....         | 25,388 |
| Edward V. Dunklee, Democrat.....         | 23,142 |
| James G. Edgeworth, Socialist.....       | 3,341  |
| William F. Evans, Progressive.....       | 8,121  |
| William Engelbert Frye, Progressive..... | 7,468  |
| Walter R. Garretson, Republican.....     | 17,998 |
| James O. Garrett, Democrat.....          | 17,437 |
| Harold G. Garwood, Republican.....       | 20,014 |
| McLeod M. George, Progressive.....       | 6,405  |
| John S. Gable, No Ass'by.....            | 1,223  |
| Alby N. Gordon, Socialist.....           | 3,188  |
| Randolph M. Hagerman, Republican.....    | 22,964 |
| Robert Harris, Republican.....           | 22,216 |
| Evangeline Heartz, Democrat.....         | 20,119 |
| Axel E. Helme, No Ass'by.....            | 1,005  |
| William W. Howland, Republican.....      | 21,264 |
| Thomas M. Hyder, Democrat.....           | 15,239 |
| John T. Joyce, Socialist.....            | 3,203  |
| Jennie B. Kern, Socialist.....           | 2,841  |
| Margaret W. Kessler, Progressive.....    | 6,719  |
| Albert Kiefer, Socialist.....            | 3,146  |
| Fred Lambert, No Ass'by.....             | 2,003  |
| James Thomas Macey, Republican.....      | 16,992 |
| Adrian Maguire, No Ass'by.....           | 2,272  |
| Louise A. Maloney, Democrat.....         | 14,935 |

ABSTRACT OF VOTES CAST AT A GENERAL ELECTION HELD ON  
TUESDAY, NOVEMBER 3, A. D. 1914, FOR REPRESENTATIVE IN  
THE TWENTIETH GENERAL ASSEMBLY FROM THE CITY AND  
COUNTY OF DENVER.—Continued.

|                                         |        |
|-----------------------------------------|--------|
| Thomas F. McGovern, Democrat.....       | 16,656 |
| William J. McPherson, Progressive.....  | 7,691  |
| Rufus P. Means, Democrat.....           | 14,377 |
| Schuyler C. Peck, Progressive.....      | 7,650  |
| Burnett S. Pepper, Progressive.....     | 6,786  |
| Leonard Ruehle, No Ass'by.....          | 1,668  |
| Stephen W. Ryan, Democrat.....          | 16,279 |
| John A. Rymer, Progressive.....         | 6,891  |
| Edward M. Sabin, Republican.....        | 18,994 |
| Benjamin J. Salmon, Democrat.....       | 17,547 |
| Charles H. Schreiber, Progressive.....  | 12,706 |
| William P. Simmington, Progressive..... | 10,616 |
| Jennie E. Smith, Socialist.....         | 3,310  |
| Frank Springrose, No Ass'by.....        | 700    |
| Edward W. Stuart, No Ass'by.....        | 991    |
| Fred J. Taylor, No Ass'by.....          | 2,332  |
| Frank D. Thompson, Republican.....      | 23,220 |
| Thomas Tonge, Republican.....           | 19,614 |
| Charles W. Varnum, Republican.....      | 17,082 |
| Jesse Vetter, Socialist.....            | 3,602  |
| John Redmond Williams, Democrat.....    | 17,866 |
| Anton F. Willmer, Socialist.....        | 2,894  |
| William Young, Socialist.....           | 3,275  |
| Drake over Craig.....                   | 7,350  |
| Dunklee over Craig.....                 | 5,104  |
| Howland over Craig.....                 | 3,226  |
| Garwood over Craig.....                 | 1,976  |
| Bills over Craig.....                   | 7,282  |
| Hagerman over Craig.....                | 4,926  |
| Dietrich over Craig.....                | 3,038  |
| Tonge over Craig.....                   | 1,576  |
| Thompson over Craig.....                | 5,182  |
| Harris over Craig.....                  | 4,170  |
| Heartz over Craig.....                  | 2,081  |
| Sabin over Craig.....                   | 956    |

## ABSTRACT OF VOTES CAST

ABSTRACT OF VOTES CAST AT A GENERAL ELECTION HELD ON TUESDAY, NOVEMBER 3, A. D. 1914, FOR REPRESENTATIVES IN THE TWENTIETH GENERAL ASSEMBLY, FROM THE COUNTY OF ADAMS.

| COUNTY                   | James N. Counter<br>(Dem.) | Samuel H. Morrow<br>(Rep.-Prog.) |
|--------------------------|----------------------------|----------------------------------|
| Adams .....              | 1,446                      | 1,001                            |
| Counter's majority ..... | 445                        |                                  |

ABSTRACT OF VOTES CAST AT A GENERAL ELECTION HELD ON TUESDAY, NOVEMBER 3, A. D. 1914, FOR REPRESENTATIVES IN THE TWENTIETH GENERAL ASSEMBLY, FROM THE COUNTY OF ALAMOSA.

| COUNTY                | Robert M. Born<br>(Dem.) | Perry Craig<br>(Rep.-Prog.) |
|-----------------------|--------------------------|-----------------------------|
| Alamosa .....         | 838                      | 715                         |
| Born's majority ..... | 123                      |                             |



ABSTRACT OF VOTES CAST AT A GENERAL ELECTION HELD ON TUESDAY, NOVEMBER 3, A. D. 1914, FOR REPRESENTATIVE IN THE TWENTIETH GENERAL ASSEMBLY FROM THE COUNTIES OF ARAPAHOE AND ELBERT.

| COUNTIES       | Frank Ford<br>(Prog.) | Fred F. Hee<br>(Dem.) | J. J. Kruse<br>(Rep.) |
|----------------|-----------------------|-----------------------|-----------------------|
| Arapahoe ..... | 1,035                 | 1,199                 | 1,053                 |
| Elbert .....   | 156                   | 535                   | 1,084                 |
|                | 1,191                 | 1,734                 | 2,137                 |

Kruse over Hee..... 403

ABSTRACT OF VOTES CAST AT A GENERAL ELECTION HELD ON TUESDAY, NOVEMBER 3, A. D. 1914, FOR REPRESENTATIVES IN THE TWENTIETH GENERAL ASSEMBLY, FROM THE COUNTY OF BOULDER. (TWO TO ELECT).

|                                   |       |
|-----------------------------------|-------|
| A. P. Ardourel, Democrat.....     | 4,435 |
| L. E. Girard, Republican.....     | 3,750 |
| Joseph Hurd, Democrat.....        | 2,994 |
| R. L. Montgomery, Republican..... | 4,023 |
| Henry Stewart, Socialist.....     | 605   |
| John C. Thompson, Socialist.....  | 635   |
| Ardourel over Girard.....         | 685   |
| Montgomery over Girard.....       | 273   |

## ABSTRACT OF VOTES CAST

ABSTRACT OF VOTES CAST AT A GENERAL ELECTION HELD ON TUESDAY, NOVEMBER 3, A. D. 1914, FOR REPRESENTATIVE IN THE TWENTIETH GENERAL ASSEMBLY, FROM THE COUNTY OF CHAFFEE.

| COUNTY                    | A. E. Wright, Jr.<br>(Dem.) | Homer J. Brown<br>(Soc.) | Edwin A. Van Camp<br>(Citizen) |
|---------------------------|-----------------------------|--------------------------|--------------------------------|
| Chaffee .....             | 1,488                       | 397                      | 797                            |
| Wright over Van Camp..... |                             |                          | 691                            |

ABSTRACT OF VOTES CAST AT A GENERAL ELECTION HELD ON TUESDAY, NOVEMBER 3, A. D. 1914, FOR REPRESENTATIVE IN THE TWENTIETH GENERAL ASSEMBLY, FROM THE COUNTY OF CLEAR CREEK.

| COUNTY                 | Frank Brady<br>(Dem.) | Herman E. Crist<br>(Rep.) |
|------------------------|-----------------------|---------------------------|
| Clear Creek.....       | 743                   | 991                       |
| Crist's majority ..... |                       | 248                       |

ABSTRACT OF VOTES CAST

ABSTRACT OF VOTES CAST AT A GENERAL ELECTION HELD ON TUESDAY, NOVEMBER 3, A. D. 1914, FOR REPRESENTATIVE IN THE TWENTIETH GENERAL ASSEMBLY, FROM THE COUNTY OF CONEJOS.

| COUNTY                  | Celestino Garcia<br>(Rep.) | Ricardo Gonzales<br>(Dem.) |
|-------------------------|----------------------------|----------------------------|
| Conejos .....           | 1,404                      | 989                        |
| Garcia's majority ..... |                            | 415                        |

ABSTRACT OF VOTES CAST AT A GENERAL ELECTION HELD ON TUESDAY, NOVEMBER 3, A. D. 1914, FOR REPRESENTATIVES IN THE TWENTIETH GENERAL ASSEMBLY FROM THE COUNTIES OF CROWLEY AND OTERO. (TWO TO ELECT).

| COUNTIES                  | Reuben C. Inge<br>(Rep.-Prog.) | Stephen F.<br>Ilgenfritz (Dem.) | Orlando W. West<br>(Dem.) | Chas. C. Wooldridge<br>(Rep.-Prog.) |
|---------------------------|--------------------------------|---------------------------------|---------------------------|-------------------------------------|
| Crowley .....             | 615                            | 598                             | 507                       | 831                                 |
| Otero .....               | 2,829                          | 1,850                           | 2,694                     | 2,327                               |
|                           | <hr/>                          | <hr/>                           | <hr/>                     | <hr/>                               |
|                           | 3,444                          | 2,448                           | 3,201                     | 3,158                               |
| Inge over Wooldridge..... |                                |                                 |                           | 286                                 |
| West over Wooldridge..... |                                |                                 |                           | 43                                  |