

**STATE OF COLORADO  
ABSTRACT OF VOTES CAST  
1988**

**PRIMARY ELECTION  
August 9, 1988**

**GENERAL ELECTION  
November 8, 1988**



Published by  
**NATALIE MEYER**  
Secretary of State

Abstract of Votes Cast at the **GENERAL** election held on November, 8, 1988TAXES - YES  
TAXES - NO

1

2

|             | # REG   | # VOTE  | 1      | 2       | TOTAL   | NO VOTE | %    | NO VT | ZTRNOUT |
|-------------|---------|---------|--------|---------|---------|---------|------|-------|---------|
| ADAMS       | 141,985 | 98,575  | 48,622 | 46,374  | 94,996  | 3,579   | 3.6  | 69.4  |         |
| ALAMOSA     | 6,960   | 5,112   | 1,270  | 3,505   | 4,775   | 337     | 6.5  | 73.4  |         |
| ARAPAHOE    | 238,658 | 164,420 | 58,970 | 95,396  | 154,366 | 10,054  | 6.1  | 68.8  |         |
| ARCHULETA   | 3,413   | 2,426   | 860    | 1,393   | 2,253   | 173     | 7.1  | 71.0  |         |
| BACA        | 3,161   | 2,658   | 635    | 1,830   | 2,465   | 193     | 7.2  | 84.0  |         |
| BENT        | 3,022   | 2,209   | 589    | 1,452   | 2,041   | 168     | 7.6  | 73.0  |         |
| BOULDER     | 157,212 | 113,809 | 41,669 | 67,729  | 109,398 | 4,411   | 3.8  | 72.3  |         |
| CHAFFEE     | 7,844   | 5,806   | 2,028  | 3,204   | 5,232   | 574     | 9.8  | 74.0  |         |
| CHEYENNE    | 1,589   | 1,231   | 400    | 733     | 1,133   | 98      | 7.9  | 77.4  |         |
| CLEAR CREEK | 5,244   | 3,800   | 1,630  | 2,012   | 3,642   | 158     | 4.1  | 72.4  |         |
| CONEJOS     | 4,672   | 3,714   | 838    | 2,301   | 3,139   | 575     | 15.4 | 79.4  |         |
| COSTILLA    | 2,532   | 1,787   | 349    | 1,025   | 1,374   | 413     | 23.1 | 70.5  |         |
| CROWLEY     | 2,005   | 1,580   | 357    | 1,102   | 1,459   | 121     | 7.6  | 78.8  |         |
| CUSTER      | 1,682   | 1,234   | 442    | 714     | 1,156   | 78      | 6.3  | 73.3  |         |
| DELTA       | 13,046  | 9,869   | 5,117  | 4,049   | 9,166   | 703     | 7.1  | 75.6  |         |
| DENVER      | 317,059 | 214,381 | 70,122 | 120,558 | 190,680 | 23,701  | 11.0 | 67.6  |         |
| DOLORES     | 1,032   | 805     | 240    | 444     | 684     | 121     | 15.0 | 78.0  |         |
| DOUGLAS     | 35,698  | 25,576  | 10,757 | 13,595  | 24,352  | 1,224   | 4.7  | 71.6  |         |
| EAGLE       | 12,880  | 8,166   | 3,309  | 4,267   | 7,576   | 590     | 7.2  | 63.4  |         |
| ELBERT      | 6,056   | 4,590   | 1,765  | 2,647   | 4,412   | 178     | 3.8  | 75.7  |         |
| EL PASO     | 213,647 | 145,988 | 80,423 | 58,207  | 138,630 | 7,358   | 5.0  | 68.3  |         |
| FREMONT     | 20,467  | 14,256  | 6,178  | 7,128   | 13,306  | 950     | 6.6  | 69.6  |         |
| GARFIELD    | 15,553  | 11,692  | 5,306  | 5,741   | 11,047  | 645     | 5.5  | 75.1  |         |
| GILPIN      | 2,456   | 1,626   | 704    | 833     | 1,537   | 89      | 5.4  | 66.2  |         |
| GRAND       | 5,981   | 3,963   | 1,390  | 2,415   | 3,805   | 158     | 3.9  | 66.2  |         |
| GUNNISON    | 7,147   | 4,663   | 1,455  | 2,870   | 4,325   | 338     | 7.2  | 65.2  |         |
| HINSDALE    | 563     | 428     | 146    | 247     | 393     | 35      | 8.1  | 76.0  |         |
| HUERFANO    | 4,152   | 3,157   | 929    | 1,823   | 2,752   | 405     | 12.8 | 76.0  |         |
| JACKSON     | 1,194   | 931     | 234    | 639     | 873     | 58      | 6.2  | 77.9  |         |
| JEFFERSON   | 288,918 | 204,486 | 77,616 | 118,992 | 196,608 | 7,878   | 3.8  | 70.7  |         |
| KIOWA       | 1,392   | 1,101   | 294    | 708     | 1,002   | 99      | 8.9  | 79.0  |         |
| KIT CARSON  | 4,827   | 3,684   | 968    | 2,462   | 3,430   | 254     | 6.8  | 76.8  |         |
| LAKE        | 3,345   | 2,651   | 1,024  | 1,245   | 2,269   | 382     | 14.4 | 79.2  |         |
| LA PLATA    | 20,405  | 14,043  | 6,067  | 7,104   | 13,171  | 872     | 6.2  | 68.8  |         |
| LARIMER     | 115,541 | 85,787  | 33,435 | 48,980  | 82,415  | 3,372   | 3.9  | 74.2  |         |
| LAS ANIMAS  | 9,027   | 6,590   | 1,399  | 3,714   | 5,113   | 1,477   | 22.4 | 73.0  |         |

## NUMBER 6

SHALL THERE BE AN AMENDMENT TO ARTICLE X OF THE COLORADO CONSTITUTION TO REQUIRE VOTER APPROVAL FOR CERTAIN INCREASES IN STATE AND LOCAL GOVERNMENT TAX REVENUES, TO RESTRICT PROPERTY, INCOME, SALES, AND OTHER TAXES, AND TO LIMIT THE RATE OF INCREASE IN STATE SPENDING?

YES

NO

|            |        |                  |         |                 |        |       |      |      |
|------------|--------|------------------|---------|-----------------|--------|-------|------|------|
| LINCOLN    | 2,964  | 2,326            | 508     | 1,695           | 2,203  | 123   | 5.2  | 78.4 |
| LOGAN      | 11,628 | 8,472            | 2,850   | 5,091           | 7,941  | 531   | 6.2  | 72.8 |
| MESA       | 55,290 | 38,795           | 22,086  | 15,221          | 37,307 | 1,488 | 3.8  | 70.1 |
| MINERAL    | 666    | 416              | 111     | 277             | 388    | 28    | 6.7  | 62.4 |
| MOFFAT     | 7,103  | 4,677            | 1,864   | 2,394           | 4,258  | 419   | 8.9  | 65.8 |
| MONTEZUMA  | 9,854  | 7,010            | 3,448   | 3,047           | 6,495  | 515   | 7.3  | 71.1 |
| MONTROSE   | 14,041 | 10,661           | 4,930   | 5,083           | 10,013 | 648   | 6.0  | 75.9 |
| MORGAN     | 13,456 | 8,993            | 2,678   | 5,611           | 8,289  | 704   | 7.8  | 66.8 |
| OTERO      | 12,174 | 8,569            | 2,106   | 5,470           | 7,576  | 993   | 11.5 | 70.3 |
| OURAY      | 1,684  | 1,320            | 505     | 749             | 1,254  | 66    | 5.0  | 78.3 |
| PARK       | 5,079  | 3,494            | 1,476   | 1,795           | 3,271  | 223   | 6.3  | 68.7 |
| PHILLIPS   | 3,029  | 2,373            | 539     | 1,691           | 2,230  | 143   | 6.0  | 78.3 |
| PITKIN     | 10,217 | 6,592            | 2,613   | 3,439           | 6,052  | 540   | 8.1  | 64.5 |
| PROWERS    | 8,026  | 5,489            | 1,261   | 3,590           | 4,851  | 638   | 11.6 | 68.3 |
| PUEBLO     | 76,973 | 57,087           | 20,168  | 33,675          | 53,843 | 3,244 | 5.6  | 74.1 |
| RIO BLANCO | 4,100  | 2,746            | 1,022   | 1,604           | 2,626  | 120   | 4.3  | 66.9 |
| RIO GRANDE | 5,875  | 4,605            | 1,162   | 3,137           | 4,299  | 306   | 6.6  | 78.3 |
| ROUTT      | 10,283 | 6,516            | 2,488   | 3,584           | 6,072  | 444   | 6.8  | 63.3 |
| SAGUACHE   | 2,834  | 2,119            | 506     | 1,271           | 1,777  | 342   | 16.1 | 74.7 |
| SAN JUAN   | 604    | 442              | 177     | 238             | 415    | 27    | 6.1  | 73.1 |
| SAN MIGUEL | 2,710  | 1,934            | 579     | 1,234           | 1,813  | 121   | 6.2  | 71.3 |
| SEDGWICK   | 1,986  | 1,611            | 456     | 1,013           | 1,469  | 142   | 8.8  | 81.1 |
| SUMMIT     | 8,876  | 5,809            | 2,177   | 3,365           | 5,542  | 267   | 4.5  | 65.4 |
| TELLER     | 7,177  | 5,670            | 3,014   | 2,444           | 5,458  | 212   | 3.7  | 79.0 |
| WASHINGTON | 3,531  | 2,818            | 680     | 1,991           | 2,671  | 147   | 5.2  | 79.8 |
| WELD       | 70,336 | 50,680           | 19,784  | 28,769          | 48,553 | 2,127 | 4.1  | 72.0 |
| YUMA       | 6,188  | 4,647            | 1,159   | 3,159           | 4,318  | 329   | 7.0  | 75.0 |
| TOTAL      |        | 0203704901432665 | 567,884 | 778,0751345,959 | 86,706 | 6.0   | 70.3 |      |

Abstract of Votes Cast at the **GENERAL** election held on November, 8, 1988PREGNANCY - YES  
PREGNANCY - NO1  
2

|             | # REG   | # VOTE  | 1      | 2       | TOTAL   | NO VOTE | %    | NO VT | XTRNOUT |
|-------------|---------|---------|--------|---------|---------|---------|------|-------|---------|
| ADAMS       | 141,985 | 98,575  | 32,910 | 62,029  | 94,939  | 3,636   | 3.6  | 69.4  |         |
| ALAMOSA     | 6,960   | 5,112   | 1,266  | 3,349   | 4,615   | 497     | 9.7  | 73.4  |         |
| ARAPAHOE    | 298,658 | 164,420 | 63,913 | 88,178  | 152,091 | 12,329  | 7.4  | 68.8  |         |
| ARCHULETA   | 3,413   | 2,426   | 678    | 1,478   | 2,156   | 270     | 11.1 | 71.0  |         |
| BACA        | 3,161   | 2,658   | 476    | 1,957   | 2,433   | 225     | 8.4  | 84.0  |         |
| BENT        | 3,022   | 2,209   | 598    | 1,408   | 2,006   | 203     | 9.1  | 73.0  |         |
| BOULDER     | 157,212 | 113,809 | 56,922 | 52,879  | 109,801 | 4,008   | 3.5  | 72.3  |         |
| CHAFFEE     | 7,844   | 5,806   | 1,617  | 3,587   | 5,204   | 602     | 10.3 | 74.0  |         |
| CHEYENNE    | 1,589   | 1,231   | 217    | 923     | 1,140   | 91      | 7.3  | 77.4  |         |
| CLEAR CREEK | 5,244   | 3,800   | 1,733  | 1,881   | 3,614   | 186     | 4.8  | 72.4  |         |
| CONEJOS     | 4,672   | 3,714   | 497    | 2,628   | 3,125   | 589     | 15.8 | 79.4  |         |
| COSTILLA    | 2,532   | 1,787   | 280    | 1,131   | 1,411   | 376     | 21.0 | 70.5  |         |
| CROWLEY     | 2,005   | 1,580   | 381    | 1,063   | 1,444   | 136     | 8.6  | 78.8  |         |
| CUSTER      | 1,682   | 1,234   | 324    | 829     | 1,153   | 81      | 6.5  | 73.3  |         |
| DELTA       | 13,046  | 9,869   | 2,732  | 6,467   | 9,199   | 670     | 6.7  | 75.6  |         |
| DENVER      | 317,059 | 214,381 | 93,880 | 98,994  | 192,874 | 21,507  | 10.0 | 67.6  |         |
| DOLORES     | 1,032   | 805     | 176    | 460     | 636     | 169     | 20.9 | 78.0  |         |
| DOUGLAS     | 35,698  | 25,576  | 9,214  | 15,109  | 24,323  | 1,253   | 4.8  | 71.6  |         |
| EAGLE       | 12,880  | 8,166   | 3,744  | 3,888   | 7,632   | 534     | 6.5  | 63.4  |         |
| ELBERT      | 6,056   | 4,590   | 1,527  | 2,887   | 4,414   | 176     | 3.8  | 75.7  |         |
| EL PASO     | 213,647 | 145,988 | 44,105 | 94,591  | 138,696 | 7,292   | 4.9  | 68.3  |         |
| FREMONT     | 20,467  | 14,256  | 3,581  | 9,589   | 13,170  | 1,086   | 7.6  | 69.6  |         |
| GARFIELD    | 15,553  | 11,692  | 4,489  | 6,525   | 11,014  | 678     | 5.7  | 75.1  |         |
| GILPIN      | 2,456   | 1,626   | 811    | 709     | 1,520   | 106     | 6.5  | 66.2  |         |
| GRAND       | 5,981   | 3,963   | 1,638  | 2,154   | 3,792   | 171     | 4.3  | 66.2  |         |
| GUNNISON    | 7,147   | 4,663   | 1,861  | 2,443   | 4,304   | 359     | 7.6  | 65.2  |         |
| HINSDALE    | 563     | 428     | 164    | 217     | 381     | 47      | 10.9 | 76.0  |         |
| HUERFANO    | 4,152   | 3,157   | 814    | 1,878   | 2,692   | 465     | 14.7 | 76.0  |         |
| JACKSON     | 1,194   | 931     | 359    | 506     | 865     | 66      | 7.0  | 77.9  |         |
| JEFFERSON   | 288,918 | 204,486 | 79,689 | 116,146 | 195,835 | 8,651   | 4.2  | 70.7  |         |
| KIOWA       | 1,392   | 1,101   | 205    | 786     | 991     | 110     | 9.9  | 79.0  |         |
| KIT CARSON  | 4,827   | 3,684   | 827    | 2,587   | 3,414   | 270     | 7.3  | 76.3  |         |
| LAKE        | 3,345   | 2,651   | 725    | 1,541   | 2,266   | 385     | 14.5 | 79.2  |         |
| LA PLATA    | 20,405  | 14,043  | 5,665  | 7,298   | 12,963  | 1,080   | 7.6  | 68.8  |         |
| LARIMER     | 115,541 | 85,787  | 31,662 | 50,815  | 82,477  | 3,310   | 3.8  | 74.2  |         |
| LAS ANIMAS  | 9,027   | 6,590   | 1,055  | 4,106   | 5,161   | 1,429   | 21.6 | 73.0  |         |

## NUMBER 7

SHALL THERE BE AN AMENDMENT TO REPEAL ARTICLE V, SECTION 50 OF THE COLORADO CONSTITUTION AND TO PROVIDE INSTEAD THAT THE STATE AND ITS AGENCIES, INSTITUTIONS, AND POLITICAL SUBDIVISIONS SHALL NOT PROHIBIT THE USE OF PUBLIC FUNDS FOR MEDICAL SERVICES FOR A WOMAN SOLELY BECAUSE OF HER CHOICE OF WHETHER OR NOT TO CONTINUE HER PREGNANCY?

YES

NO

|            |                  |         |                 |        |        |       |      |      |
|------------|------------------|---------|-----------------|--------|--------|-------|------|------|
| LINCOLN    | 2,964            | 2,326   | 628             | 1,569  | 2,197  | 129   | 5.5  | 78.4 |
| LOGAN      | 11,628           | 8,472   | 2,371           | 5,481  | 7,852  | 620   | 7.3  | 72.8 |
| MESA       | 55,290           | 38,795  | 14,074          | 23,149 | 37,223 | 1,572 | 4.0  | 70.1 |
| MINERAL    | 666              | 416     | 132             | 238    | 370    | 46    | 11.0 | 62.4 |
| MOFFAT     | 7,103            | 4,677   | 1,189           | 3,074  | 4,263  | 414   | 8.8  | 65.8 |
| MONTEZUMA  | 9,854            | 7,010   | 2,100           | 4,288  | 6,388  | 622   | 8.8  | 71.1 |
| MONTE ROSE | 14,041           | 10,661  | 3,243           | 6,748  | 9,991  | 670   | 6.2  | 75.9 |
| MORGAN     | 13,456           | 8,993   | 2,492           | 5,782  | 8,274  | 719   | 7.9  | 66.8 |
| OTERO      | 12,174           | 8,569   | 2,198           | 5,317  | 7,515  | 1,054 | 12.3 | 70.3 |
| OURAY      | 1,684            | 1,320   | 473             | 763    | 1,236  | 84    | 6.3  | 78.3 |
| PARK       | 5,079            | 3,494   | 1,476           | 1,795  | 3,271  | 223   | 6.3  | 68.7 |
| PHILLIPS   | 3,029            | 2,373   | 512             | 1,680  | 2,192  | 181   | 7.6  | 78.3 |
| PITKIN     | 10,217           | 6,592   | 3,794           | 2,300  | 6,094  | 498   | 7.5  | 64.5 |
| PROWERS    | 8,026            | 5,489   | 1,206           | 3,588  | 4,794  | 695   | 12.6 | 68.3 |
| PUEBLO     | 76,973           | 57,087  | 17,670          | 35,490 | 53,160 | 3,927 | 6.8  | 74.1 |
| RIO BLANCO | 4,100            | 2,746   | 827             | 1,745  | 2,572  | 174   | 6.3  | 66.9 |
| RIO GRANDE | 5,875            | 4,605   | 1,056           | 3,044  | 4,100  | 505   | 10.9 | 78.3 |
| ROUTT      | 10,283           | 6,516   | 2,850           | 3,210  | 6,060  | 456   | 6.9  | 63.3 |
| SAGUACHE   | 2,834            | 2,119   | 556             | 1,212  | 1,768  | 351   | 16.5 | 74.7 |
| SAN JUAN   | 604              | 442     | 149             | 253    | 402    | 40    | 9.0  | 73.1 |
| SAN MIGUEL | 2,710            | 1,984   | 1,009           | 755    | 1,764  | 170   | 8.7  | 71.3 |
| SEDGWICK   | 1,986            | 1,611   | 392             | 1,080  | 1,472  | 139   | 8.6  | 81.1 |
| SUMMIT     | 8,876            | 5,809   | 2,845           | 2,714  | 5,559  | 250   | 4.3  | 65.4 |
| TELLER     | 7,177            | 5,670   | 1,902           | 3,510  | 5,412  | 258   | 4.5  | 79.0 |
| WASHINGTON | 3,531            | 2,818   | 659             | 1,958  | 2,612  | 206   | 7.3  | 79.8 |
| WELD       | 70,336           | 50,680  | 16,344          | 32,206 | 48,550 | 2,130 | 4.2  | 72.0 |
| YUMA       | 6,188            | 4,647   | 1,188           | 3,118  | 4,306  | 341   | 7.3  | 75.0 |
| TOTAL      | 2023704901432665 | 534,070 | 809,0781348,148 | 89,517 | 6.2    | 70.3  |      |      |

Abstract of Votes Cast at the **GENERAL** election held on November, 8, 1988

LEGISLATIVE REFORM - YES  
 LEGISLATIVE REFORM - NO

1  
 2

|             | # REG   | # VOTE  | 1       | 2      | TOTAL   | NO VOTE | %    | NO VT | ZTRNOUT |
|-------------|---------|---------|---------|--------|---------|---------|------|-------|---------|
| ADAMS       | 141,985 | 98,575  | 60,840  | 24,644 | 85,484  | 13,091  | 13.2 | 69.4  |         |
| ALAMOSA     | 6,960   | 5,112   | 2,341   | 1,932  | 4,273   | 839     | 16.4 | 73.4  |         |
| ARAPAHOE    | 238,658 | 164,420 | 99,586  | 33,441 | 133,027 | 31,393  | 19.0 | 68.8  |         |
| ARCHULETA   | 3,413   | 2,426   | 1,178   | 631    | 1,809   | 617     | 25.4 | 71.0  |         |
| BACA        | 3,161   | 2,658   | 797     | 1,255  | 2,052   | 606     | 22.7 | 84.0  |         |
| BENT        | 3,022   | 2,209   | 835     | 865    | 1,700   | 509     | 23.0 | 73.0  |         |
| BOULDER     | 157,212 | 113,809 | 74,770  | 22,567 | 97,337  | 16,472  | 14.4 | 72.3  |         |
| CHAFFEE     | 7,844   | 5,806   | 2,911   | 1,590  | 4,501   | 1,305   | 22.4 | 74.0  |         |
| CHEYENNE    | 1,589   | 1,231   | 428     | 513    | 941     | 290     | 23.5 | 77.4  |         |
| CLEAR CREEK | 5,244   | 3,800   | 2,466   | 797    | 3,263   | 537     | 14.1 | 72.4  |         |
| CONEJOS     | 4,672   | 3,714   | 1,226   | 1,425  | 2,651   | 1,063   | 28.6 | 79.4  |         |
| COSTILLA    | 2,532   | 1,787   | 425     | 724    | 1,149   | 639     | 35.7 | 70.5  |         |
| CROWLEY     | 2,005   | 1,580   | 535     | 747    | 1,282   | 298     | 18.8 | 78.8  |         |
| CUSTER      | 1,682   | 1,234   | 602     | 402    | 1,004   | 230     | 18.6 | 73.3  |         |
| DELTA       | 13,046  | 9,869   | 5,408   | 2,715  | 8,123   | 1,746   | 17.6 | 75.6  |         |
| DENVER      | 317,059 | 214,381 | 123,594 | 40,465 | 164,059 | 50,322  | 23.4 | 67.6  |         |
| DOLORS      | 1,032   | 805     | 250     | 278    | 528     | 277     | 34.4 | 78.0  |         |
| DOUGLAS     | 35,698  | 25,576  | 16,791  | 5,022  | 21,813  | 3,763   | 14.7 | 71.6  |         |
| EAGLE       | 12,880  | 8,166   | 4,384   | 2,080  | 6,464   | 1,702   | 20.8 | 63.4  |         |
| ELBERT      | 6,056   | 4,590   | 2,575   | 1,359  | 3,934   | 656     | 14.2 | 75.7  |         |
| EL PASO     | 213,647 | 145,988 | 89,400  | 33,016 | 122,416 | 23,572  | 16.1 | 68.3  |         |
| FREMONT     | 20,467  | 14,256  | 7,963   | 3,806  | 11,769  | 2,487   | 17.4 | 69.6  |         |
| GARFIELD    | 15,553  | 11,692  | 7,031   | 2,743  | 9,774   | 1,918   | 16.4 | 75.1  |         |
| GILPIN      | 2,456   | 1,626   | 972     | 331    | 1,303   | 323     | 19.8 | 66.2  |         |
| GRAND       | 5,981   | 3,963   | 2,196   | 1,088  | 3,284   | 679     | 17.1 | 66.2  |         |
| GUNNISON    | 7,147   | 4,663   | 2,469   | 1,150  | 3,619   | 1,044   | 22.3 | 65.2  |         |
| HINSDALE    | 563     | 428     | 222     | 113    | 335     | 93      | 21.7 | 78.0  |         |
| HUERFANO    | 4,152   | 3,157   | 1,255   | 933    | 2,188   | 969     | 30.6 | 76.0  |         |
| JACKSON     | 1,194   | 931     | 426     | 348    | 774     | 162     | 17.4 | 77.9  |         |
| JEFFERSON   | 288,918 | 204,486 | 133,387 | 42,506 | 175,893 | 28,593  | 13.9 | 70.7  |         |
| KIOWA       | 1,392   | 1,101   | 287     | 599    | 886     | 215     | 19.5 | 79.0  |         |
| KIT CARSON  | 4,827   | 3,684   | 1,498   | 1,294  | 2,792   | 892     | 24.2 | 76.3  |         |
| LAKE        | 3,345   | 2,651   | 1,272   | 667    | 1,939   | 712     | 26.8 | 79.2  |         |
| LA PLATA    | 20,405  | 14,043  | 8,337   | 3,181  | 11,518  | 2,525   | 17.9 | 68.8  |         |
| LARIMER     | 115,541 | 85,787  | 55,509  | 18,051 | 73,560  | 12,227  | 14.2 | 74.2  |         |
| LAS ANIMAS  | 9,027   | 6,590   | 1,699   | 2,100  | 3,799   | 2,791   | 42.3 | 73.0  |         |

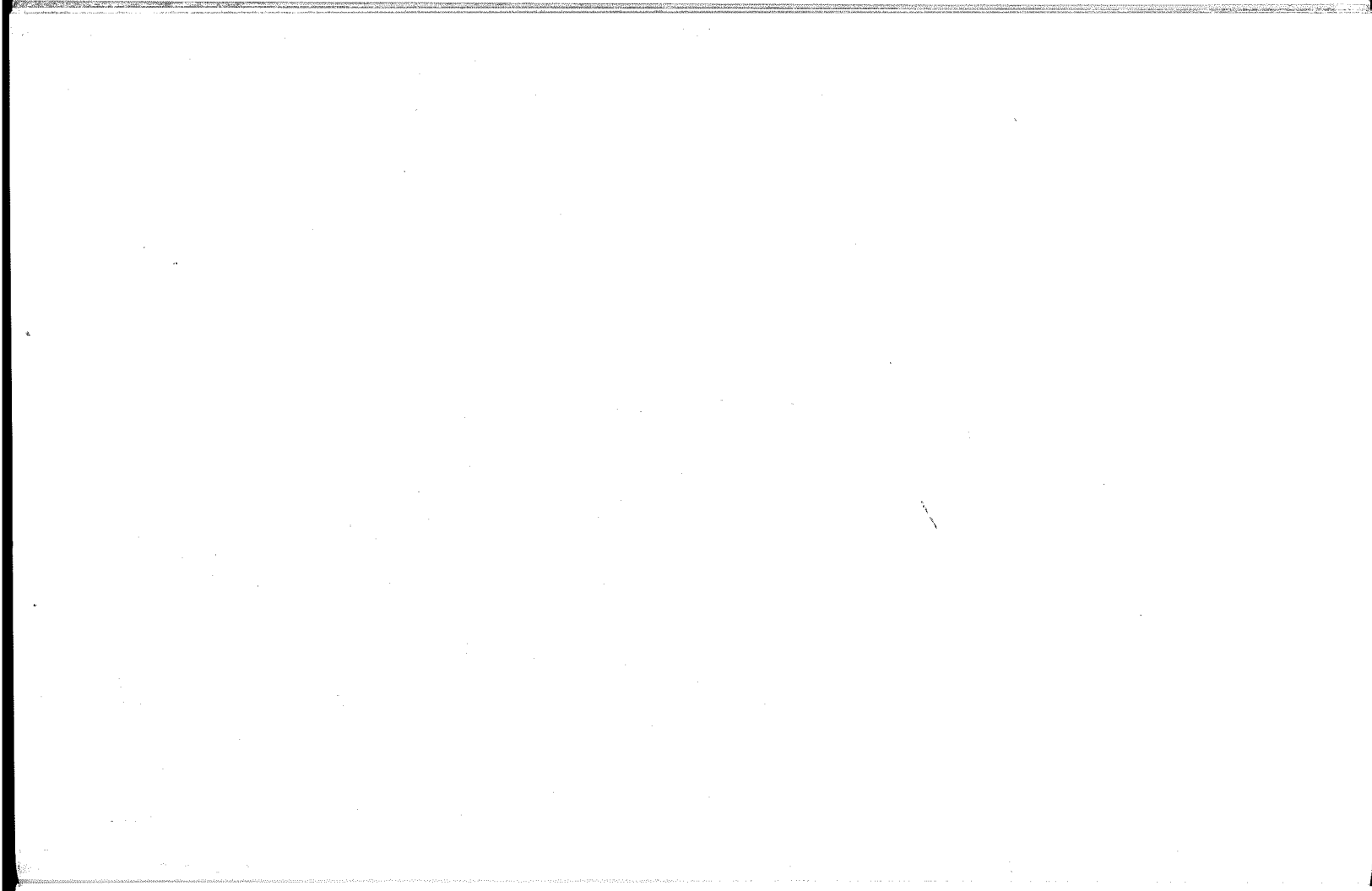
## NUMBER 8

SHALL THERE BE AN AMENDMENT TO THE COLORADO CONSTITUTION TO REQUIRE THAT EVERY MEASURE REFERRED TO A COMMITTEE OF REFERENCE OF THE GENERAL ASSEMBLY BE CONSIDERED BY THE COMMITTEE UPON ITS MERITS, TO PROVIDE THAT EACH MEASURE REPORTED BY A COMMITTEE OF REFERENCE TO THE SENATE OR HOUSE SHALL APPEAR ON THE CALENDAR OF THAT CHAMBER IN THE ORDER IN WHICH IT WAS REPORTED, AND TO PROHIBIT MEMBERS OF THE GENERAL ASSEMBLY FROM COMMITTING THEMSELVES OR OTHER MEMBERS IN A PARTY CAUCUS TO VOTE IN FAVOR OF OR AGAINST ANY MATTER PENDING OR TO BE INTRODUCED IN THE GENERAL ASSEMBLY?

YES

NO

|            |                  |         |         |          |         |       |      |      |
|------------|------------------|---------|---------|----------|---------|-------|------|------|
| LINCOLN    | 2,964            | 2,326   | 908     | 982      | 1,885   | 441   | 18.9 | 78.4 |
| LOGAN      | 11,628           | 8,472   | 4,079   | 2,935    | 7,014   | 1,458 | 17.2 | 72.8 |
| MESA       | 55,290           | 38,795  | 24,569  | 9,151    | 33,720  | 5,075 | 13.0 | 70.1 |
| MINERAL    | 666              | 416     | 144     | 177      | 321     | 95    | 22.8 | 62.4 |
| MOFFAT     | 7,103            | 4,677   | 2,165   | 1,474    | 3,639   | 1,038 | 22.1 | 65.8 |
| MONTEZUMA  | 9,854            | 7,010   | 3,592   | 2,159    | 5,751   | 1,259 | 17.9 | 71.1 |
| MONTRÖSE   | 14,041           | 10,661  | 5,999   | 2,923    | 8,922   | 1,739 | 16.3 | 75.9 |
| MORGAN     | 13,456           | 8,993   | 4,197   | 2,679    | 6,876   | 2,117 | 23.5 | 66.8 |
| OTERO      | 12,174           | 8,569   | 2,888   | 3,459    | 6,347   | 2,222 | 25.9 | 70.3 |
| OURAY      | 1,684            | 1,320   | 734     | 341      | 1,075   | 245   | 18.5 | 78.3 |
| PARK       | 5,079            | 3,494   | 2,029   | 811      | 2,840   | 654   | 18.7 | 68.7 |
| PHILLIPS   | 3,029            | 2,373   | 821     | 999      | 1,820   | 553   | 23.3 | 78.3 |
| PITKIN     | 10,217           | 6,592   | 3,752   | 1,143    | 4,895   | 1,697 | 25.7 | 64.5 |
| PROWERS    | 8,026            | 5,489   | 1,797   | 2,285    | 4,082   | 1,407 | 25.6 | 68.3 |
| PUEBLO     | 76,973           | 57,087  | 28,717  | 19,899   | 48,616  | 8,471 | 14.8 | 74.1 |
| RIO BLANCO | 4,100            | 2,746   | 1,279   | 957      | 2,236   | 510   | 18.5 | 66.9 |
| RIO GRANDE | 5,875            | 4,605   | 1,908   | 1,931    | 3,839   | 766   | 16.6 | 78.3 |
| ROUTT      | 10,283           | 6,516   | 3,735   | 1,564    | 5,299   | 1,217 | 18.6 | 63.3 |
| SAGUACHE   | 2,834            | 2,119   | 754     | 699      | 1,453   | 666   | 31.4 | 74.7 |
| SAN JUAN   | 604              | 442     | 223     | 141      | 364     | 78    | 17.6 | 73.1 |
| SAN MIGUEL | 2,710            | 1,934   | 1,004   | 456      | 1,460   | 474   | 24.5 | 71.8 |
| SEDGWICK   | 1,986            | 1,611   | 613     | 587      | 1,200   | 411   | 25.5 | 81.1 |
| SUMMIT     | 8,876            | 5,809   | 3,692   | 1,192    | 4,884   | 925   | 15.9 | 65.4 |
| TELLER     | 7,177            | 5,670   | 3,518   | 1,387    | 4,905   | 765   | 13.4 | 79.0 |
| WASHINGTON | 3,531            | 2,818   | 949     | 1,395    | 2,344   | 474   | 16.8 | 79.8 |
| WELD       | 70,336           | 50,680  | 30,696  | 13,055   | 43,751  | 6,929 | 13.6 | 72.0 |
| YUMA       | 6,188            | 4,647   | 1,826   | 2,005    | 3,831   | 816   | 17.5 | 75.0 |
| TOTAL      | 0208704901482665 | 852,448 | 332,159 | 1184,607 | 248,058 | 17.3  | 70.3 |      |





Abstract of Votes Cast at the **GENERAL** election held on November, 8, 1988

Cultural Question

|           | YES            | NO             |
|-----------|----------------|----------------|
| Adams     | 62,147         | 29,591         |
| Arapahoe  | 114,979        | 35,870         |
| Boulder   | 80,644         | 27,480         |
| Denver    | 141,153        | 44,405         |
| Douglas   | 9,601          | 2,724          |
| Jefferson | 145,126        | 49,281         |
|           | <u>553,650</u> | <u>189,351</u> |

Number 9

SHALL THE ZOO, MUSEUMS AND CULTURAL PROGRAMS IN THE SIX COUNTY METROPOLITAN AREA RECEIVE PROCEEDS FROM A ONE-TENTH OF A CENT SALES TAX TO BE DISTRIBUTED ACCORDING TO LAW WITH STRICT LIMITATIONS ON ADMINISTRATIVE COSTS WITH A GUARANTEED AMOUNT FOR EACH COUNTY AND GOVERNED BY A BOARD WITH REPRESENTATIVES FROM THE SIX COUNTIES?

|     |
|-----|
| YES |
| NO  |



Abstract of Votes Cast at the **GENERAL** election held on November, 8, 1988

## SUPREME COURT JUSTICE

VOLLACK, ANTHONY F-YES  
VOLLACK, ANTHONY F-NO

1  
2

|             | # REG   | # VOTE  | 1      | 2      |
|-------------|---------|---------|--------|--------|
| ADAMS       | 141,985 | 98,575  | 54,131 | 24,902 |
| ALAMOSA     | 6,960   | 5,112   | 2,967  | 1,096  |
| ARAPAHOE    | 238,658 | 164,420 | 86,810 | 27,266 |
| ARCHULETA   | 3,413   | 2,426   | 1,093  | 578    |
| BACA        | 3,161   | 2,658   | 1,026  | 607    |
| BENT        | 3,022   | 2,209   | 1,055  | 441    |
| BOULDER     | 157,212 | 113,809 | 58,968 | 18,553 |
| CHAFFEE     | 7,844   | 5,806   | 2,559  | 1,030  |
| CHEYENNE    | 1,589   | 1,231   | 462    | 344    |
| CLEAR CREEK | 5,244   | 3,800   | 2,065  | 909    |
| CONEJOS     | 4,672   | 3,714   | 1,667  | 962    |
| COSTILLA    | 2,532   | 1,787   | 560    | 301    |
| CROWLEY     | 2,005   | 1,580   | 843    | 335    |
| CUSTER      | 1,682   | 1,234   | 671    | 233    |
| DELTA       | 13,046  | 9,869   | 4,995  | 2,535  |
| DENVER      | 317,059 | 214,381 | 85,399 | 19,924 |
| DOLOROS     | 1,032   | 805     | 281    | 159    |
| DOUGLAS     | 35,698  | 25,576  | 14,241 | 5,206  |
| EAGLE       | 12,880  | 8,166   | 4,290  | 1,441  |
| ELBERT      | 6,056   | 4,590   | 2,394  | 1,079  |
| EL PASO     | 213,647 | 145,988 | 81,740 | 29,210 |
| FREMONT     | 20,467  | 14,256  | 8,276  | 3,066  |
| GARFIELD    | 15,553  | 11,692  | 6,570  | 2,329  |
| GILPIN      | 2,456   | 1,626   | 690    | 300    |
| GRAND       | 5,981   | 3,963   | 1,986  | 820    |
| GUNNISON    | 7,147   | 4,663   | 1,999  | 872    |
| HINSDALE    | 563     | 428     | 185    | 87     |

|            |         |         |         |        |
|------------|---------|---------|---------|--------|
| HUERFANO   | 4,152   | 3,157   | 1,553   | 602    |
| JACKSON    | 1,194   | 931     | 477     | 152    |
| JEFFERSON  | 288,918 | 204,486 | 112,748 | 48,437 |
| KIOWA      | 1,392   | 1,101   | 536     | 228    |
| KIT CARSON | 4,827   | 3,684   | 1,590   | 798    |
| LAKE       | 3,345   | 2,651   | 1,007   | 356    |
| LA PLATA   | 20,405  | 14,043  | 7,672   | 2,705  |
| LARIMER    | 115,541 | 85,787  | 49,129  | 13,776 |
| LAS ANIMAS | 9,027   | 6,590   | 1,920   | 1,227  |
| LINCOLN    | 2,964   | 2,326   | 1,080   | 553    |
| LOGAN      | 11,628  | 8,472   | 4,420   | 2,185  |
| MESA       | 55,290  | 38,795  | 22,891  | 8,642  |
| MINERAL    | 666     | 416     | 231     | 65     |
| MOFFAT     | 7,103   | 4,677   | 2,221   | 922    |
| MONTEZUMA  | 9,854   | 7,010   | 3,663   | 1,662  |
| MONTROSE   | 14,041  | 10,661  | 5,572   | 2,537  |
| MORGAN     | 13,456  | 8,993   | 4,023   | 1,612  |
| OTERO      | 12,174  | 8,569   | 3,149   | 1,245  |
| OURAY      | 1,684   | 1,320   | 597     | 289    |
| PARK       | 5,079   | 3,494   | 1,533   | 746    |
| PHILLIPS   | 3,029   | 2,373   | 1,076   | 490    |
| PITKIN     | 10,217  | 6,592   | 3,052   | 1,002  |
| PROWERS    | 8,026   | 5,489   | 2,173   | 993    |
| PUEBLO     | 76,973  | 57,087  | 34,416  | 11,329 |
| RIO BLANCO | 4,100   | 2,746   | 1,347   | 557    |
| RIO GRANDE | 5,875   | 4,605   | 2,650   | 989    |
| ROUTT      | 10,283  | 6,516   | 3,138   | 1,281  |
| SAGUACHE   | 2,834   | 2,119   | 960     | 389    |
| SAN JUAN   | 604     | 442     | 250     | 95     |
| SAN MIGUEL | 2,710   | 1,934   | 748     | 345    |
| SEDGWICK   | 1,986   | 1,611   | 778     | 304    |
| SUMMIT     | 8,876   | 5,809   | 3,141   | 1,053  |
| TELLER     | 7,177   | 5,670   | 3,019   | 1,354  |
| WASHINGTON | 3,581   | 2,818   | 1,152   | 792    |
| WELD       | 70,336  | 50,680  | 27,699  | 11,173 |
| YUMA       | 6,188   | 4,647   | 2,251   | 975    |

TOTAL

0208704901432665 741,785 261,545

Abstract of Votes Cast at the **GENERAL** election held on November, 8, 1988

### COURT OF APPEALS JUDGES

|                        |   |
|------------------------|---|
| CRISWELL, JOHN A.-YES  | 1 |
| CRISWELL, JOHN A.-NO   | 2 |
| PIERCE, CHARLES D.-YES | 3 |
| PIERCE, CHARLES D.-NO  | 4 |

|             | # REG   | # VOTE  | 1      | 2      | 3      | 4      |
|-------------|---------|---------|--------|--------|--------|--------|
| ADAMS       | 141,985 | 98,575  | 54,635 | 23,438 | 54,264 | 22,778 |
| ALAMOSA     | 6,960   | 5,112   | 2,995  | 1,033  | 2,925  | 1,017  |
| ARAPAHOE    | 238,658 | 164,420 | 85,267 | 26,247 | 84,745 | 25,097 |
| ARCHULETA   | 3,413   | 2,426   | 1,097  | 564    | 1,126  | 488    |
| BACA        | 3,161   | 2,658   | 1,025  | 589    | 1,017  | 587    |
| BENT        | 3,022   | 2,209   | 1,079  | 418    | 1,032  | 393    |
| BOULDER     | 157,212 | 113,809 | 58,295 | 18,154 | 57,841 | 17,622 |
| CHAFFEE     | 7,844   | 5,806   | 2,571  | 904    | 2,491  | 902    |
| CHEYENNE    | 1,589   | 1,231   | 449    | 330    | 440    | 328    |
| CLEAR CREEK | 5,244   | 3,800   | 2,055  | 883    | 2,050  | 861    |
| CONEJOS     | 4,672   | 3,714   | 1,659  | 804    | 1,311  | 714    |
| COSTILLA    | 2,532   | 1,787   | 518    | 277    | 541    | 267    |
| CROWLEY     | 2,005   | 1,580   | 841    | 303    | 730    | 288    |
| CUSTER      | 1,682   | 1,234   | 652    | 233    | 652    | 225    |
| DELTA       | 13,046  | 9,869   | 4,988  | 2,441  | 4,990  | 2,359  |
| DENVER      | 317,059 | 214,381 | 82,422 | 20,116 | 81,826 | 19,095 |
| DOLORES     | 1,032   | 805     | 277    | 151    | 273    | 151    |
| DOUGLAS     | 35,698  | 25,576  | 14,323 | 4,931  | 14,311 | 4,785  |
| EAGLE       | 12,880  | 8,166   | 4,303  | 1,379  | 4,285  | 1,347  |
| ELBERT      | 6,056   | 4,590   | 2,382  | 1,015  | 2,177  | 1,002  |
| EL PASO     | 213,647 | 145,988 | 80,587 | 28,240 | 79,181 | 27,546 |
| FREMONT     | 20,467  | 14,256  | 8,304  | 2,913  | 7,803  | 3,086  |
| GARFIELD    | 15,553  | 11,692  | 6,544  | 2,243  | 6,456  | 2,175  |
| GILPIN      | 2,456   | 1,626   | 661    | 314    | 663    | 294    |
| GRAND       | 5,981   | 3,963   | 1,980  | 764    | 1,946  | 786    |
| GUNNISON    | 7,147   | 4,663   | 2,023  | 851    | 2,003  | 847    |

|            |         |         |         |        |         |        |
|------------|---------|---------|---------|--------|---------|--------|
| HINSDALE   | 563     | 428     | 189     | 78     | 180     | 78     |
| HUERFANO   | 4,152   | 3,157   | 1,510   | 556    | 1,090   | 476    |
| JACKSON    | 1,194   | 931     | 477     | 125    | 419     | 135    |
| JEFFERSON  | 288,918 | 204,486 | 110,719 | 41,274 | 108,337 | 41,040 |
| KIOWA      | 1,392   | 1,101   | 527     | 206    | 453     | 199    |
| KIT CARSON | 4,827   | 3,684   | 1,413   | 839    | 1,563   | 755    |
| LAKE       | 3,345   | 2,651   | 1,006   | 347    | 994     | 340    |
| LA PLATA   | 20,405  | 14,043  | 7,737   | 2,548  | 7,723   | 2,531  |
| LARIMER    | 115,541 | 85,787  | 48,398  | 13,508 | 47,811  | 13,273 |
| LAS ANIMAS | 9,027   | 6,590   | 1,914   | 1,139  | 1,836   | 1,139  |
| LINCOLN    | 2,964   | 2,326   | 1,043   | 535    | 898     | 515    |
| LOGAN      | 11,628  | 8,472   | 4,438   | 2,298  | 4,398   | 2,222  |
| MESA       | 55,290  | 38,795  | 23,076  | 8,336  | 23,054  | 8,168  |
| MINERAL    | 666     | 416     | 227     | 63     | 210     | 55     |
| MOFFAT     | 7,103   | 4,677   | 2,241   | 929    | 2,174   | 891    |
| MONTEZUMA  | 9,854   | 7,010   | 3,681   | 1,583  | 3,666   | 1,548  |
| MONTROSE   | 14,041  | 10,661  | 5,591   | 2,435  | 5,576   | 2,397  |
| MORGAN     | 13,456  | 8,993   | 4,008   | 1,588  | 4,005   | 1,549  |
| OTERO      | 12,174  | 8,569   | 3,197   | 1,121  | 3,145   | 1,106  |
| OURAY      | 1,684   | 1,320   | 590     | 275    | 581     | 274    |
| PARK       | 5,079   | 3,494   | 1,527   | 753    | 1,495   | 739    |
| PHILLIPS   | 3,029   | 2,373   | 1,051   | 460    | 891     | 462    |
| PITKIN     | 10,217  | 6,592   | 3,055   | 961    | 3,059   | 938    |
| PROWERS    | 8,026   | 5,489   | 2,187   | 967    | 2,209   | 957    |
| PUEBLO     | 76,973  | 57,087  | 34,630  | 10,742 | 34,789  | 9,991  |
| RIO BLANCO | 4,100   | 2,746   | 1,324   | 653    | 1,323   | 634    |
| RIO GRANDE | 5,875   | 4,605   | 2,694   | 902    | 2,654   | 865    |
| ROUTT      | 10,283  | 6,516   | 3,133   | 1,223  | 3,105   | 1,195  |
| SAGUACHE   | 2,834   | 2,119   | 933     | 358    | 800     | 356    |
| SAN JUAN   | 604     | 442     | 248     | 88     | 244     | 91     |
| SAN MIGUEL | 2,710   | 1,934   | 739     | 319    | 722     | 327    |
| SEDGWICK   | 1,986   | 1,611   | 747     | 294    | 747     | 294    |
| SUMMIT     | 8,876   | 5,809   | 3,139   | 985    | 3,113   | 974    |
| TELLER     | 7,177   | 5,670   | 2,984   | 1,306  | 2,872   | 1,311  |
| WASHINGTON | 3,531   | 2,818   | 1,122   | 789    | 982     | 769    |
| WELD       | 70,336  | 50,680  | 26,746  | 11,124 | 26,436  | 10,709 |
| YUMA       | 6,188   | 4,647   | 2,225   | 946    | 2,196   | 950    |

TOTAL

0203704901432665 732,398 252,188 722,829 245,293

Abstract of Votes Cast at the **GENERAL** election held on November, 8, 1988**DISTRICT JUDGES**  
**First Judicial District**

|                           |   |
|---------------------------|---|
| MUNCH, CHRISTOPHER J.-YES | 1 |
| MUNCH, CHRISTOPHER J.-NO  | 2 |
| NIETO, HENRY E.-YES       | 3 |
| NIETO, HENRY E.-NO        | 4 |
| PERRICONE, GASPAR F.-YES  | 5 |
| PERRICONE, GASPAR F.-NO   | 6 |
| VILLANO, MICHAEL C.-YES   | 7 |
| VILLANO, MICHAEL C.-NO    | 8 |

|              | # REG          | # VOTE         | 1              | 2             | 3              | 4             | 5              | 6             | 7              | 8             |
|--------------|----------------|----------------|----------------|---------------|----------------|---------------|----------------|---------------|----------------|---------------|
| GILPIN       | 2,456          | 1,526          | 652            | 307           | 674            | 303           | 656            | 313           | 673            | 299           |
| JEFFERSON    | 288,918        | 204,486        | 109,038        | 39,574        | 107,765        | 41,094        | 106,511        | 42,150        | 109,930        | 40,843        |
| <b>TOTAL</b> | <b>291,374</b> | <b>206,112</b> | <b>109,690</b> | <b>39,881</b> | <b>108,439</b> | <b>41,397</b> | <b>107,167</b> | <b>42,463</b> | <b>110,603</b> | <b>41,142</b> |

**DISTRICT JUDGES**  
**Second Judicial District**

CARELLI, EDWARD EUGENE-YES 1  
 CARELLI, EDWARD EUGENE-NO 2  
 COUGHLIN, JOHN-W.-YES 3  
 COUGHLIN, JOHN W.-NO 4  
 FLOWERS, CLIFTON-YES 5  
 FLOWERS, CLIFTON-NO 6  
 FULLERTON, ROBERT P.-YES 7  
 FULLERTON, ROBERT P.-NO 8  
 LAWSON, LESLIE M.-YES 9  
 LAWSON, LESLIE M.-NO 10  
 MARTIN, WARREN O.-YES 11  
 MARTIN, WARREN O.-NO 12  
 MEYER, WILLIAM G.-YES 13  
 MEYER, WILLIAM G.-NO 14  
 PETERSON, CONNIE L. - Yes 15  
 PETERSON, CONNIE L. - No 16  
 ROTHENBERG, SANDRA I. - Yes 17  
 ROTHENBERG, SANDRA I. - No 18

|               | # REG   | # VOTE  | 1      | 2      | 3      | 4      | 5      | 6      | 7      | 8      |
|---------------|---------|---------|--------|--------|--------|--------|--------|--------|--------|--------|
| <b>DENVER</b> | 317,059 | 214,381 | 78,525 | 24,194 | 82,685 | 18,479 | 86,164 | 20,173 | 87,379 | 18,072 |
| <b>TOTAL</b>  | 317,059 | 214,381 | 78,525 | 24,194 | 82,685 | 18,479 | 86,164 | 20,173 | 87,379 | 18,072 |
|               | 9       | 10      | 11     | 12     | 13     | 14     | 15     | 16     | 17     | 18     |
|               | 82,145  | 18,440  | 77,054 | 22,383 | 79,781 | 19,451 | 83,433 | 18,024 | 83,051 | 20,040 |
|               | 82,145  | 18,440  | 77,054 | 22,383 | 79,781 | 19,451 | 83,433 | 18,024 | 83,051 | 20,040 |

Abstract of Votes Cast at the **GENERAL** election held on November, 8, 1988

**DISTRICT JUDGES**  
**Juvenile Court**

|                        |   |
|------------------------|---|
| COLE, MORRIS E.-YES    | 1 |
| COLE, MORRIS E.-NO     | 2 |
| WAKEFIELD, DANA U.-YES | 3 |
| WAKEFIELD, DANA U.-NO  | 4 |
| WEEKS, ORRELLE R.-YES  | 5 |
| WEEKS, ORRELLE R.-NO   | 6 |

|        | # REG   | # VOTE  | 1      | 2      | 3      | 4      | 5      | 6      |
|--------|---------|---------|--------|--------|--------|--------|--------|--------|
| DENVER | 317,059 | 214,381 | 73,107 | 26,726 | 84,704 | 17,776 | 79,667 | 20,464 |
| TOTAL  | 317,059 | 214,381 | 73,107 | 26,726 | 84,704 | 17,776 | 79,667 | 20,464 |

**DISTRICT JUDGES**  
**Third Judicial District**

|                      |   |
|----------------------|---|
| APPEL, CLAUDE W.-YES | 1 |
| APPEL, CLAUDE W.-NO  | 2 |

|            | # REG  | # VOTE | 1     | 2     |
|------------|--------|--------|-------|-------|
| HUERFANO   | 4,152  | 3,157  | 1,802 | 648   |
| LAS ANIMAS | 9,027  | 6,590  | 1,983 | 1,194 |
| TOTAL      | 13,179 | 9,747  | 3,785 | 1,842 |



**DISTRICT JUDGES**  
**Fourth Judicial District**

|                            |   |
|----------------------------|---|
| CAMPBELL, DONALD E.-YES    | 1 |
| CAMPBELL, DONALD E.-NO     | 2 |
| GALLAGHER, JOHN F.-YES     | 3 |
| GALLAGHER, JOHN F.-NO      | 4 |
| PELLICAN, STEVEN T.-YES    | 5 |
| PELLICAN, STEVEN T.-NO     | 6 |
| RAILEY, MATT MCCONNELL-YES | 7 |
| RAILEY, MATT MCCONNELL-NO  | 8 |

|              | # REG          | # VOTE         | 1             | 2             | 3             | 4             | 5             | 6             | 7             | 8             |
|--------------|----------------|----------------|---------------|---------------|---------------|---------------|---------------|---------------|---------------|---------------|
| EL PASO      | 213,647        | 145,988        | 86,685        | 28,869        | 83,662        | 28,885        | 81,364        | 27,569        | 82,434        | 28,072        |
| TELLER       | 7,177          | 5,670          | 3,184         | 1,210         | 3,215         | 1,193         | 3,026         | 1,257         | 3,212         | 1,201         |
| <b>TOTAL</b> | <b>220,824</b> | <b>151,658</b> | <b>89,869</b> | <b>30,079</b> | <b>86,877</b> | <b>30,078</b> | <b>84,390</b> | <b>28,826</b> | <b>85,646</b> | <b>29,273</b> |

**DISTRICT JUDGES**  
**Fifth Judicial District**

|                      |   |
|----------------------|---|
| HART, RICHARD H.-YES | 1 |
| HART, RICHARD H.-NO  | 2 |

|              | # REG         | # VOTE        | 1             | 2            |
|--------------|---------------|---------------|---------------|--------------|
| CLEAR CREEK  | 5,244         | 3,800         | 2,137         | 830          |
| EAGLE        | 12,880        | 8,166         | 4,703         | 1,347        |
| LAKE         | 3,345         | 2,651         | 1,153         | 372          |
| SUMMIT       | 8,876         | 5,809         | 3,364         | 975          |
| <b>TOTAL</b> | <b>30,345</b> | <b>20,426</b> | <b>11,357</b> | <b>3,524</b> |

Abstract of Votes Cast at the **GENERAL** election held on November, 8, 1988

**DISTRICT JUDGES**  
**Eighth Judicial District**

HIATT, JAMES H.-YES 1  
HIATT, JAMES H.-NO 2

|              | # REG          | # VOTE        | 1             | 2             |
|--------------|----------------|---------------|---------------|---------------|
| JACKSON      | 1,194          | 931           | 504           | 122           |
| LARIMER      | 115,541        | 85,787        | 51,968        | 12,578        |
| <b>TOTAL</b> | <b>116,735</b> | <b>86,718</b> | <b>52,472</b> | <b>12,700</b> |

**DISTRICT JUDGES**  
**Ninth Judicial District**

OSSOLA, THOMAS W.-YES 1  
OSSOLA, THOMAS W.-NO 2

|              | # REG         | # VOTE        | 1             | 2            |
|--------------|---------------|---------------|---------------|--------------|
| GARFIELD     | 15,558        | 11,692        | 7,258         | 2,418        |
| PITKIN       | 10,217        | 6,592         | 3,250         | 951          |
| RIO BLANCO   | 4,100         | 2,746         | 1,382         | 656          |
| <b>TOTAL</b> | <b>29,870</b> | <b>21,030</b> | <b>11,890</b> | <b>4,025</b> |

**DISTRICT JUDGES**  
**Tenth Judicial District**

ROBB, RICHARD D.-YES  
 ROBB, RICHARD D.-NO

1  
 2

|        | # REG  | # VOTE | 1      | 2     |
|--------|--------|--------|--------|-------|
| PUEBLO | 76,978 | 57,087 | 38,210 | 9,687 |
| TOTAL  | 76,978 | 57,087 | 38,210 | 9,687 |

**DISTRICT JUDGES**  
**Eleventh Judicial District**

KEOHANE, PAUL J.-YES  
 KEOHANE, PAUL J.-NO

1  
 2

|         | # REG  | # VOTE | 1     | 2     |
|---------|--------|--------|-------|-------|
| CHAFFEE | 7,844  | 5,806  | 2,579 | 1,121 |
| CUSTER  | 1,682  | 1,234  | 615   | 428   |
| FREMONT | 20,467 | 14,256 | 4,822 | 7,644 |
| PARK    | 5,079  | 3,494  | 1,484 | 775   |
| TOTAL   | 35,072 | 24,790 | 9,500 | 9,968 |

Abstract of Votes Cast at the **GENERAL** election held on November, 8, 1988

**DISTRICT JUDGES**  
**Thirteenth Judicial District**

**SHINN, STEVEN EUGENE-YES** 1  
**SHINN, STEVEN EUGENE-NO** 2

|                   | # REG         | # VOTE        | 1             | 2            |
|-------------------|---------------|---------------|---------------|--------------|
| <b>KIT CARSON</b> | <b>4,827</b>  | <b>3,684</b>  | <b>1,660</b>  | <b>714</b>   |
| <b>LOGAN</b>      | <b>11,628</b> | <b>8,472</b>  | <b>4,749</b>  | <b>2,052</b> |
| <b>MORGAN</b>     | <b>13,456</b> | <b>8,993</b>  | <b>4,058</b>  | <b>1,581</b> |
| <b>PHILLIPS</b>   | <b>3,029</b>  | <b>2,373</b>  | <b>1,115</b>  | <b>452</b>   |
| <b>SEDGWICK</b>   | <b>1,986</b>  | <b>1,611</b>  | <b>792</b>    | <b>282</b>   |
| <b>WASHINGTON</b> | <b>3,531</b>  | <b>2,818</b>  | <b>1,222</b>  | <b>780</b>   |
| <b>YUMA</b>       | <b>6,188</b>  | <b>4,647</b>  | <b>2,957</b>  | <b>1,044</b> |
| <b>TOTAL</b>      | <b>44,645</b> | <b>32,598</b> | <b>16,553</b> | <b>6,905</b> |

**DISTRICT JUDGES**  
**Sixteenth Judicial District**

**KOLOMITZ, M. JON-YES** 1  
**KOLOMITZ, M. JON-NO** 2

|                | # REG         | # VOTE        | 1            | 2            |
|----------------|---------------|---------------|--------------|--------------|
| <b>BENT</b>    | <b>3,022</b>  | <b>2,209</b>  | <b>1,155</b> | <b>392</b>   |
| <b>CROWLEY</b> | <b>2,005</b>  | <b>1,580</b>  | <b>912</b>   | <b>292</b>   |
| <b>OTERO</b>   | <b>12,174</b> | <b>8,569</b>  | <b>3,801</b> | <b>1,299</b> |
| <b>TOTAL</b>   | <b>17,201</b> | <b>12,358</b> | <b>5,868</b> | <b>1,983</b> |

**DISTRICT JUDGES**  
**Seventeenth Judicial District**

|                             |   |
|-----------------------------|---|
| MARSHALL, DONALD W. JR.-YES | 1 |
| MARSHALL, DONALD W. JR.-NO  | 2 |
| ROAN, PHILIP F.-YES         | 3 |
| ROAN, PHILIP F.-NO          | 4 |

|       | # REG   | # VOTE | 1      | 2      | 3      | 4      |
|-------|---------|--------|--------|--------|--------|--------|
| ADAMS | 141,985 | 98,575 | 55,772 | 22,011 | 54,878 | 23,689 |
| TOTAL | 141,985 | 98,575 | 55,772 | 22,011 | 54,878 | 23,689 |

**DISTRICT JUDGES**  
**Eighteenth Judicial District**

|                          |   |
|--------------------------|---|
| STEINHARDT, JOYCE S.-YES | 1 |
| STEINHARDT, JOYCE S.-NO  | 2 |

|         | # REG   | # VOTE  | 1       | 2      |
|---------|---------|---------|---------|--------|
| ARAPAOE | 238,658 | 164,420 | 86,901  | 25,225 |
| DOUGLAS | 35,698  | 25,576  | 14,693  | 4,635  |
| ELBERT  | 6,056   | 4,590   | 2,444   | 1,004  |
| LINCOLN | 2,964   | 2,326   | 1,104   | 503    |
| TOTAL   | 283,376 | 196,912 | 105,142 | 31,367 |

Abstract of Votes Cast at the **GENERAL** election held on November, 8, 1988

**COUNTY JUDGES**  
**Adams County**

|                      |   |
|----------------------|---|
| BELDOCK, OVID R.-YES | 1 |
| BELDOCK, OVID R.-NO  | 2 |
| VIGIL, JOHN J.-YES   | 3 |
| VIGIL, JOHN J.-NO    | 4 |

|       | # REG   | # VOTE | 1      | 2      | 3      | 4      |
|-------|---------|--------|--------|--------|--------|--------|
| ADAMS | 141,985 | 98,575 | 54,372 | 23,578 | 55,383 | 24,213 |
| TOTAL | 141,985 | 98,575 | 54,372 | 23,578 | 55,383 | 24,213 |

**COUNTY JUDGES**  
**Alamosa County**

|                      |   |
|----------------------|---|
| JONES, JEAN PAUL-YES | 1 |
| JONES, JEAN PAUL-NO  | 2 |

|         | # REG | # VOTE | 1     | 2     |
|---------|-------|--------|-------|-------|
| ALAMOSA | 6,960 | 5,112  | 3,432 | 1,038 |
| TOTAL   | 6,960 | 5,112  | 3,432 | 1,038 |

**COUNTY JUDGES**  
**Arapahoe County**

|                          |   |
|--------------------------|---|
| BECKMAN, ALAN R.-YES     | 1 |
| BECKMAN, ALAN R.-NO      | 2 |
| JAUCH, RICHARD M.-YES    | 3 |
| JAUCH, RICHARD M.-NO     | 4 |
| MACRUM, JAMES F., JR-YES | 5 |
| MACRUM, JAMES F., JR-NO  | 6 |
| TAYLOR, RALPH C.-YES     | 7 |
| TAYLOR, RALPH C.-NO      | 8 |

|          | # REG   | # VOTE  | 1      | 2      | 3      | 4      | 5      | 6      | 7      | 8      |
|----------|---------|---------|--------|--------|--------|--------|--------|--------|--------|--------|
| ARAPAHOE | 238,658 | 164,420 | 83,942 | 25,847 | 83,052 | 25,760 | 83,499 | 24,778 | 70,981 | 40,453 |
| TOTAL    | 238,658 | 164,420 | 83,942 | 25,847 | 83,052 | 25,760 | 83,499 | 24,778 | 70,981 | 40,453 |

**COUNTY JUDGES**  
**Archuleta County**

|                   |   |
|-------------------|---|
| HYDE, BERT E.-YES | 1 |
| HYDE, BERT E.-NO  | 2 |

|           | # REG | # VOTE | 1     | 2   |
|-----------|-------|--------|-------|-----|
| ARCHULETA | 3,413 | 2,426  | 1,468 | 524 |
| TOTAL     | 3,413 | 2,426  | 1,468 | 524 |

Abstract of Votes Cast at the **GENERAL** election held on November, 8, 1988

**COUNTY JUDGES**  
**Bent County**

|                              |  |  |  |          |
|------------------------------|--|--|--|----------|
| <b>MARMON, THOMAS F.-YES</b> |  |  |  | <b>1</b> |
| <b>MARMON, THOMAS F.-NO</b>  |  |  |  | <b>2</b> |

|              | <b># REG</b> | <b># VOTE</b> | <b>1</b>     | <b>2</b>   |
|--------------|--------------|---------------|--------------|------------|
| <b>BENT</b>  | <b>3,022</b> | <b>2,209</b>  | <b>1,167</b> | <b>505</b> |
| <b>TOTAL</b> | <b>3,022</b> | <b>2,209</b>  | <b>1,167</b> | <b>505</b> |

**COUNTY JUDGES**  
**Boulder County**

|  |  |  |  |          |
|--|--|--|--|----------|
| <b>REED, THOMAS JEFFERSON BOYD-YES</b> |  |  |  | <b>1</b> |
| <b>REED, THOMAS JEFFERSON BOYD-NO</b>  |  |  |  | <b>2</b> |

|                | <b># REG</b>   | <b># VOTE</b>  | <b>1</b>      | <b>2</b>      |
|----------------|----------------|----------------|---------------|---------------|
| <b>BOULDER</b> | <b>157,212</b> | <b>113,809</b> | <b>61,081</b> | <b>17,858</b> |
| <b>TOTAL</b>   | <b>157,212</b> | <b>113,809</b> | <b>61,081</b> | <b>17,858</b> |



**COUNTY JUDGES**  
**Clear Creek County**

**GAUBATZ, GEORGE R.-YES** 1  
**GAUBATZ, GEORGE R.-NO** 2

|                    | # REG        | # VOTE       | 1            | 2            |
|--------------------|--------------|--------------|--------------|--------------|
| <b>CLEAR CREEK</b> | <b>5,244</b> | <b>3,800</b> | <b>2,161</b> | <b>1,031</b> |
| <b>TOTAL</b>       | <b>5,244</b> | <b>3,800</b> | <b>2,161</b> | <b>1,031</b> |

**COUNTY JUDGES**  
**Custer County**

**SULLIVAN, WHITNEY B.-YES** 1  
**SULLIVAN, WHITNEY B.-NO** 2

|               | # REG        | # VOTE       | 1          | 2          |
|---------------|--------------|--------------|------------|------------|
| <b>CUSTER</b> | <b>1,682</b> | <b>1,234</b> | <b>822</b> | <b>269</b> |
| <b>TOTAL</b>  | <b>1,682</b> | <b>1,234</b> | <b>822</b> | <b>269</b> |

Abstract of Votes Cast at the **GENERAL** election held on November, 8, 1988

**COUNTY JUDGES**  
**Delta County**

**FRENCH, FREDERICK LYNN-YES** 1  
**FRENCH, FREDERICK LYNN-NO** 2

|              | # REG         | # VOTE       | 1            | 2            |
|--------------|---------------|--------------|--------------|--------------|
| <b>DELTA</b> | <b>13,046</b> | <b>9,869</b> | <b>3,528</b> | <b>5,080</b> |
| <b>TOTAL</b> | <b>13,046</b> | <b>9,869</b> | <b>3,528</b> | <b>5,080</b> |

**COUNTY JUDGES**  
**Dolores County**

**JOHNSON, BOB-YES** 1  
**JOHNSON, BOB-NO** 2

|                | # REG        | # VOTE     | 1          | 2          |
|----------------|--------------|------------|------------|------------|
| <b>DOLORES</b> | <b>1,032</b> | <b>805</b> | <b>484</b> | <b>217</b> |
| <b>TOTAL</b>   | <b>1,032</b> | <b>805</b> | <b>484</b> | <b>217</b> |

**COUNTY JUDGES**  
**El Paso County**

|                             |   |
|-----------------------------|---|
| BROMLEY, REBECCA SNYDER-YES | 1 |
| BROMLEY, REBECCA SNYDER-NO  | 2 |
| NELSON, JERRY COLLINS-YES   | 3 |
| NELSON, JERRY COLLINS-NO    | 4 |

|         | # REG   | # VOTE  | 1      | 2      | 3      | 4      |
|---------|---------|---------|--------|--------|--------|--------|
| EL PASO | 213,647 | 145,988 | 83,882 | 26,837 | 80,623 | 26,888 |
| TOTAL   | 213,647 | 145,988 | 83,882 | 26,837 | 80,623 | 26,888 |

**COUNTY JUDGES**  
**Fremont County**

|                        |   |
|------------------------|---|
| FOX, WILLIAM GOBIN-YES | 1 |
| FOX, WILLIAM GOBIN-NO  | 2 |

|         | # REG  | # VOTE | 1     | 2     |
|---------|--------|--------|-------|-------|
| FREMONT | 20,467 | 14,256 | 8,570 | 3,398 |
| TOTAL   | 20,467 | 14,256 | 8,570 | 3,398 |