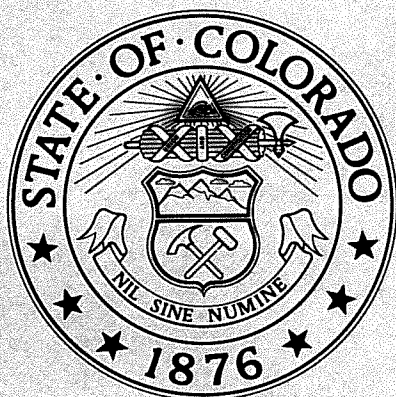


**STATE OF COLORADO
ABSTRACT OF VOTES CAST
1988**

**PRIMARY ELECTION
August 9, 1988**

**GENERAL ELECTION
November 8, 1988**



Published by
NATALIE MEYER
Secretary of State

Abstract of Votes Cast at the **GENERAL** election held on November, 8, 1988

120 DAY LEG. SESSION - YES
 120 DAY LEG. SESSION - NO

1
 2

	# REG	# VOTE	1	2	TOTAL	NO VOTE	%	NO VT	XTRNOUT
ADAMS	141,985	98,575	47,741	40,542	88,283	10,292	10.4	69.4	
ALAMOSA	6,960	5,112	2,061	2,327	4,388	724	14.1	73.4	
ARAPAHOE	238,658	164,420	76,420	63,194	139,614	24,806	15.0	68.8	
ARCHULETA	3,413	2,426	1,081	806	1,887	539	22.2	71.0	
BACA	3,161	2,658	841	1,243	2,084	574	21.5	84.0	
BENT	3,022	2,209	846	935	1,781	428	19.3	73.0	
BOULDER	157,212	113,809	43,740	57,764	101,504	12,305	10.8	72.3	
CHAFFEE	7,844	5,806	2,427	2,348	4,775	1,031	17.7	74.0	
CHEYENNE	1,589	1,231	458	488	946	285	23.1	77.4	
CLEAR CREEK	5,244	3,800	1,702	1,686	3,388	412	10.8	72.4	
CONEJOS	4,672	3,714	1,092	1,667	2,759	955	25.7	79.4	
COSTILLA	2,532	1,787	392	745	1,137	650	36.3	70.5	
CROWLEY	2,005	1,580	667	637	1,304	276	17.4	78.8	
CUSTER	1,682	1,234	596	428	1,024	210	17.0	73.3	
DELTA	13,046	9,869	4,400	3,902	8,302	1,567	15.8	75.6	
DENVER	317,059	214,381	85,414	82,467	167,881	46,500	21.6	67.6	
DOLORES	1,032	805	235	309	544	261	32.4	78.0	
DOUGLAS	35,698	25,576	12,188	10,384	22,572	3,004	11.7	71.6	
EAGLE	12,880	8,166	3,610	3,239	6,849	1,317	16.1	63.4	
ELBERT	6,056	4,590	2,053	1,962	4,015	575	12.5	75.7	
EL PASO	213,647	145,988	69,184	57,545	126,729	19,259	13.1	68.3	
FREMONT	20,467	14,256	6,398	5,475	11,873	2,383	16.7	69.6	
GARFIELD	15,553	11,692	5,434	4,670	10,104	1,588	13.5	75.1	
GILPIN	2,456	1,626	643	737	1,380	246	15.1	66.2	
GRAND	5,981	3,963	1,644	1,769	3,413	550	13.8	66.2	
GUNNISON	7,147	4,663	1,841	2,076	3,917	746	15.9	65.2	
HINSDALE	563	428	161	182	343	85	19.8	76.0	
HUERFANO	4,152	3,157	1,112	1,100	2,212	945	29.9	76.0	
JACKSON	1,194	931	474	338	812	119	12.7	77.9	
JEFFERSON	288,918	204,486	96,904	84,532	181,436	23,050	11.2	70.7	
KIOWA	1,392	1,101	364	426	790	311	28.2	79.0	
KIT CARSON	4,827	3,684	1,494	1,420	2,914	770	20.9	76.3	
LAKE	3,345	2,651	1,004	1,085	2,089	562	21.1	79.2	
LA PLATA	20,405	14,043	5,536	6,402	11,938	2,105	14.9	68.8	
LARIMER	115,541	85,787	43,533	33,570	77,103	8,684	10.1	74.2	
LAS ANIMAS	9,027	6,590	1,880	2,369	4,249	2,341	35.5	73.0	

NUMBER 3

"AN AMENDMENT TO SECTION 7 OF ARTICLE V OF THE CONSTITUTION OF THE STATE OF COLORADO, PROVIDING THAT REGULAR SESSIONS OF THE GENERAL ASSEMBLY SHALL NOT EXCEED ONE HUNDRED TWENTY CALENDAR DAYS."

YES
NO

LINCOLN	2,964	2,326	921	973	1,894	432	18.5	78.4
LOGAN	11,628	8,472	3,680	3,600	7,280	1,192	14.0	72.8
MESA	55,290	38,795	20,389	14,155	34,544	4,251	10.9	70.1
MINERAL	666	416	159	179	338	78	18.7	62.4
MOFFAT	7,103	4,677	1,854	1,993	3,847	830	17.7	65.8
MONTEZUMA	9,854	7,010	2,611	3,322	5,933	1,077	15.3	71.1
MONTRÖSE	14,041	10,661	4,489	4,628	9,117	1,544	14.4	75.9
MORGAN	13,456	8,993	3,949	3,367	7,316	1,677	18.6	66.8
OTERO	12,174	8,569	3,323	3,263	6,586	1,983	23.1	70.3
OURAY	1,584	1,320	538	570	1,108	212	16.0	78.3
PARK	5,079	3,494	1,273	1,706	2,979	515	14.7	68.7
PHILLIPS	3,029	2,373	837	1,030	1,867	506	21.3	78.3
PITKIN	10,217	6,592	2,690	2,699	5,389	1,203	18.2	64.5
PROWERS	8,026	5,489	1,942	2,405	4,347	1,142	20.8	68.3
PUEBLO	76,973	57,087	26,620	22,533	49,153	7,934	13.8	74.1
RIO BLANCO	4,100	2,746	1,205	1,115	2,320	426	15.5	66.9
RIO GRANDE	5,875	4,605	1,834	2,062	3,896	709	15.3	78.3
ROUTT	10,283	6,516	2,894	2,624	5,518	998	15.3	63.3
SAGUACHE	2,834	2,119	719	763	1,482	637	30.0	74.7
SAN JUAN	604	442	170	198	368	74	16.7	73.1
SAN MIGUEL	2,710	1,934	848	693	1,541	398	20.8	71.3
SEDGWICK	1,986	1,611	548	716	1,264	347	21.5	81.1
SUMMIT	8,878	5,809	2,679	2,414	5,093	716	12.3	65.4
TELLER	7,177	5,670	2,470	2,522	4,992	678	11.9	79.0
WASHINGTON	3,531	2,818	886	1,462	2,348	470	16.6	79.8
WELD	70,336	50,680	24,724	20,293	45,017	5,663	11.1	72.0
YUMA	6,188	4,647	1,541	2,305	3,846	801	17.2	75.0
TOTAL	0203704901432665	641,368	584,3591225,722	206,943	14.4	70.3		

Abstract of Votes Cast at the **GENERAL** election held on November, 8, 1988

CONSTITUTION CLEAN-UP - YES
 CONSTITUTION CLEAN-UP - NO

1
 2

	# REG	# VOTE	1	2	TOTAL	NO VOTE	%	NO VT	XTRNOUT
ADAMS	141,985	98,575	57,805	29,004	86,309	12,266	12.4	69.4	
ALAMOSA	6,960	5,112	2,149	2,018	4,167	945	18.4	73.4	
ARAPAHOE	238,658	164,420	96,123	37,435	133,558	30,862	18.7	68.8	
ARCHULETA	3,413	2,426	1,139	688	1,827	599	24.6	71.0	
BACA	3,161	2,658	721	1,296	2,017	641	24.1	84.0	
BENT	3,022	2,209	892	819	1,711	498	22.5	73.0	
BOULDER	157,212	113,809	68,616	30,001	98,617	15,192	13.3	72.3	
CHAFFEE	7,844	5,806	2,672	2,089	4,761	1,045	17.9	74.0	
CHEYENNE	1,589	1,231	386	498	884	347	28.1	77.4	
CLEAR CREEK	5,244	3,800	2,277	1,001	3,278	522	13.7	72.4	
COÑEJOS	4,672	3,714	974	1,691	2,665	1,049	28.2	79.4	
COSTILLA	2,532	1,787	419	689	1,108	679	37.9	70.5	
CROWLEY	2,005	1,580	615	669	1,284	296	18.7	78.8	
CUSTER	1,682	1,234	578	445	1,023	211	17.0	73.3	
DELTA	13,046	9,869	4,868	3,267	8,135	1,734	17.5	75.6	
DENVER	317,059	214,381	111,943	50,902	162,845	51,536	24.0	67.6	
DOLORES	1,032	805	202	339	541	264	32.7	78.0	
DOUGLAS	35,698	25,576	15,953	5,889	21,842	3,734	14.5	71.6	
EAGLE	12,880	8,166	4,891	1,888	6,779	1,387	16.9	63.4	
ELBERT	6,056	4,590	2,385	1,466	3,851	739	16.1	75.7	
EL PASO	218,647	145,988	82,723	39,792	122,515	23,473	16.0	68.3	
FREMONT	20,467	14,256	6,529	4,966	11,495	2,761	19.3	69.6	
GARFIELD	15,553	11,692	6,284	3,573	9,807	1,885	16.1	75.1	
GILPIN	2,456	1,626	852	458	1,310	316	19.4	66.2	
GRAND	5,981	3,963	2,054	1,245	3,299	664	16.7	66.2	
GUNNISON	7,147	4,663	2,356	1,413	3,769	894	19.1	65.2	
HINSDALE	563	428	206	127	333	95	22.1	76.0	
HUERFANO	4,152	3,157	1,166	971	2,137	1,020	32.3	76.0	
JACKSON	1,194	931	431	324	755	176	18.9	77.9	
JEFFERSON	288,918	204,486	128,596	49,633	178,229	26,257	12.8	70.7	
KIOWA	1,392	1,101	346	533	879	222	20.1	79.0	
KIT CARSON	4,827	3,684	1,428	1,319	2,747	937	25.4	76.3	
LAKE	3,345	2,651	1,201	887	2,088	563	21.2	79.2	
LA PLATA	20,405	14,043	7,990	3,614	11,604	2,439	17.3	68.8	
LARIMER	115,541	85,787	52,771	22,067	74,838	10,949	12.7	74.2	
LAS ANIMAS	9,027	6,590	1,635	2,313	3,948	2,642	40.0	73.0	

NUMBER 4

"AN AMENDMENT TO ARTICLES V, VII, VIII, AND X OF THE CONSTITUTION OF THE STATE OF COLORADO CONCERNING THE MAXIMUM EIGHT-HOUR WORKDAY APPLICABLE TO PERSONS WHO ARE EMPLOYED IN CERTAIN OCCUPATIONS, CONFORMING TO THE AGE QUALIFICATION FOR ELECTORS TO THAT REQUIRED BY THE CONSTITUTION OF THE UNITED STATES, AND CONCERNING THE DELETION OF OBSOLETE PROVISIONS RELATING TO SUFFRAGE FOR WOMEN, SELECTION OF THE SEAT OF GOVERNMENT OF THE STATE, APPROPRIATIONS FOR THE CAPITOL BUILDING, AND STATE SUPPORT FOR THE 1976 WINTER OLYMPICS."

YES

NO

LINCOLN	2,964	2,326	948	910	1,858	468	20.1	78.4
LOGAN	11,628	8,472	4,032	2,917	6,949	1,523	17.9	72.8
MESA	55,290	38,795	21,370	12,219	33,589	5,206	13.4	70.1
MINERAL	666	416	175	147	322	94	22.5	62.4
MOFFAT	7,103	4,677	2,011	1,734	3,745	932	19.9	65.8
MONTEZUMA	9,854	7,010	3,200	2,584	5,784	1,226	17.4	71.1
MONTRORSE	14,041	10,661	5,219	3,613	8,832	1,829	17.1	75.9
MORGAN	13,456	8,993	4,159	2,865	7,024	1,969	21.8	66.8
OTERO	12,174	8,569	3,288	2,988	6,276	2,293	26.7	70.3
OURAY	1,684	1,320	680	392	1,072	248	18.7	78.3
PARK	5,079	3,494	1,816	1,078	2,894	600	17.1	68.7
PHILLIPS	3,029	2,373	964	816	1,780	593	24.9	78.3
PITKIN	10,217	6,592	4,061	1,262	5,323	1,269	19.2	64.5
PROWERS	8,026	5,489	1,983	2,216	4,199	1,290	23.5	68.3
PUEBLO	76,973	57,087	28,119	19,510	47,629	9,458	16.5	74.1
RIO BLANCO	4,100	2,746	1,189	1,021	2,210	536	19.5	66.9
RIO GRANDE	5,875	4,605	1,748	1,938	3,686	919	19.9	78.3
ROUTT	10,283	6,516	3,363	1,991	5,354	1,162	17.8	63.3
SAGUACHE	2,834	2,119	735	703	1,438	681	32.1	74.7
SAN JUAN	604	442	230	134	364	78	17.6	73.1
SAN MIGUEL	2,710	1,934	1,065	453	1,518	416	21.5	71.3
SEDGWICK	1,986	1,611	730	441	1,171	440	27.3	81.1
SUMMIT	8,876	5,809	3,683	1,242	4,925	884	15.2	65.4
TELLER	7,177	5,670	3,152	1,731	4,883	787	13.8	79.0
WASHINGTON	3,531	2,818	1,210	1,060	2,270	548	19.4	79.8
WELD	70,336	50,680	26,737	16,617	43,354	7,326	14.4	72.0
YUMA	6,188	4,647	1,757	1,995	3,752	895	19.2	75.0
TOTAL	0203704901432665	799,250	389,906	1189,156	243,509	16.9	70.3	

Abstract of Votes Cast at the **GENERAL** election held on November, 8, 1988UNPATENTED MINING CLAIMS - YES
UNPATENTED MINING CLAIMS - NO1
2

	# REG	# VOTE	1	2	TOTAL	NO VOTE	%	NO VT	ZTRNOUT
ADAMS	141,985	98,575	44,585	42,283	86,868	11,707	11.8	69.4	
ALAMOSA	6,960	5,112	1,690	2,596	4,286	826	16.1	73.4	
ARAPAHOE	238,658	164,420	78,068	61,528	139,596	24,824	15.0	68.8	
ARCHULETA	3,413	2,426	981	902	1,883	543	22.3	71.0	
BACA	3,161	2,658	685	1,341	2,026	632	23.7	84.0	
BENT	3,022	2,209	686	1,041	1,727	482	21.8	73.0	
BOULDER	157,212	113,809	46,609	52,899	99,508	14,301	12.5	72.3	
CHAFFEE	7,844	5,806	2,714	2,092	4,806	1,000	17.2	74.0	
CHEYENNE	1,589	1,231	320	578	898	333	27.0	77.4	
CLEAR CREEK	5,244	3,800	1,791	1,654	3,445	355	9.3	72.4	
CONEJOS	4,672	3,714	703	1,952	2,655	1,059	28.5	79.4	
COSTILLA	2,532	1,787	288	857	1,145	642	35.9	70.5	
CROWLEY	2,005	1,580	483	772	1,255	325	20.5	78.8	
CUSTER	1,682	1,234	571	496	1,067	167	13.5	73.3	
DELTA	13,046	9,869	4,763	3,647	8,410	1,459	14.7	75.6	
DENVER	317,059	214,381	88,973	72,010	160,983	53,398	24.9	67.6	
DOLORES	1,082	805	222	346	568	237	29.4	78.0	
DOUGLAS	35,698	25,576	12,341	9,738	22,079	3,497	13.6	71.6	
EAGLE	12,880	8,166	3,662	3,259	6,921	1,245	15.2	63.4	
ELBERT	6,056	4,590	1,875	2,009	3,884	706	15.3	75.7	
EL PASO	213,647	145,988	57,768	65,020	122,788	23,200	15.8	68.3	
FREMONT	20,467	14,256	5,810	6,131	11,941	2,315	16.2	69.6	
GARFIELD	15,553	11,692	5,492	4,663	10,155	1,537	13.1	75.1	
GILPIN	2,456	1,626	755	623	1,378	248	15.2	66.2	
GRAND	5,981	3,963	1,585	1,726	3,311	652	16.4	66.2	
GUNNISON	7,147	4,663	2,128	1,751	3,879	784	16.8	65.2	
HINSDALE	563	428	188	164	352	76	17.7	76.0	
HUERFANO	4,152	3,157	1,017	1,158	2,175	982	31.1	76.0	
JACKSON	1,194	931	459	303	762	169	18.1	77.9	
JEFFERSON	288,918	204,486	98,809	80,159	178,968	25,518	12.4	70.7	
KIDWA	1,392	1,101	247	606	853	248	22.5	79.0	
KIT CARSON	4,827	3,684	1,353	1,441	2,794	890	24.1	76.3	
LAKE	3,345	2,651	1,151	954	2,105	546	20.5	79.2	
LA PLATA	20,405	14,043	7,276	4,711	11,987	2,056	14.6	68.8	
LARIMER	115,541	85,787	40,784	34,296	75,080	10,707	12.4	74.2	
LAS ANIMAS	9,027	6,590	1,217	2,763	3,980	2,610	39.6	73.0	

NUMBER 5

"AN AMENDMENT TO SECTION 3 OF ARTICLE X OF THE CONSTITUTION OF THE STATE OF COLORADO, CREATING AN EXEMPTION FROM PROPERTY TAXATION FOR NON-PRODUCING UNPATENTED MINING CLAIMS."

YES

NO

LINCOLN	2,964	2,326	764	1,045	1,809	517	22.2	78.4
LOGAN	11,628	8,472	3,122	3,874	6,996	1,476	17.4	72.8
MESA	55,290	38,795	19,223	15,214	34,437	4,358	11.2	70.1
MINERAL	666	416	149	174	323	93	22.3	62.4
MOFFAT	7,103	4,677	1,770	2,028	3,798	879	18.7	65.8
MONTEZUMA	9,854	7,010	3,042	2,915	5,957	1,053	15.0	71.1
MONTRÖSE	14,041	10,661	4,899	4,207	9,108	1,555	14.5	75.9
MORGAN	13,456	8,993	3,545	3,502	7,047	1,946	21.6	66.8
OTERO	12,174	8,569	2,788	3,569	6,357	2,212	25.8	70.3
OURAY	1,684	1,320	615	502	1,117	203	15.3	78.3
PARK	5,079	3,494	1,482	1,518	3,000	494	14.1	68.7
PHILLIPS	3,029	2,373	808	963	1,771	602	25.3	78.3
PITKIN	10,217	6,592	3,018	2,621	5,639	953	14.4	64.5
PROWERS	8,026	5,489	1,589	2,537	4,126	1,363	24.8	68.3
PUEBLO	76,973	57,087	22,859	25,153	48,012	9,075	15.8	74.1
RIO BLANCO	4,100	2,746	1,060	1,236	2,296	450	16.3	66.9
RIO GRANDE	5,875	4,605	1,501	2,379	3,880	725	15.7	78.3
ROUTT	10,283	6,516	2,948	2,595	5,543	973	14.9	63.3
SAGUACHE	2,834	2,119	578	936	1,514	605	28.5	74.7
SAN JUAN	604	442	162	211	373	69	15.6	73.1
SAN MIGUEL	2,710	1,924	1,026	568	1,594	340	17.5	71.3
SEDGWICK	1,986	1,611	595	581	1,176	435	27.0	81.1
SUMMIT	8,876	5,809	2,912	2,208	5,120	689	11.8	65.4
TELLER	7,177	5,670	2,305	2,740	5,045	625	11.0	79.0
WASHINGTON	3,531	2,818	1,123	1,140	2,263	555	19.6	79.8
WELD	70,336	50,680	20,517	23,219	43,736	6,944	13.7	72.0
YUMA	6,188	4,647	1,572	2,191	3,763	884	19.0	75.0
TOTAL	0203704901432665	624,021	578,295	1202,316	230,349	16.0	70.3	

Abstract of Votes Cast at the **GENERAL** election held on November, 8, 1988TAXES - YES
TAXES - NO

1

2

	# REG	# VOTE	1	2	TOTAL	NO VOTE	%	NO VT	ZTRNDUT
ADAMS	141,985	98,575	48,622	46,374	94,996	3,579	3.6	69.4	
ALAMOSA	6,960	5,112	1,270	3,505	4,775	337	6.5	73.4	
ARAPAHOE	238,658	164,420	58,970	95,396	154,366	10,054	6.1	68.8	
ARCHULETA	3,413	2,426	860	1,393	2,253	173	7.1	71.0	
BACA	3,161	2,658	635	1,830	2,465	193	7.2	84.0	
BENT	3,022	2,209	589	1,452	2,041	168	7.6	73.0	
BOULDER	157,212	113,809	41,669	67,729	109,398	4,411	3.8	72.3	
CHAFFEE	7,844	5,806	2,028	3,204	5,232	574	9.8	74.0	
CHEYENNE	1,589	1,231	400	733	1,133	98	7.9	77.4	
CLEAR CREEK	5,244	3,800	1,630	2,012	3,642	158	4.1	72.4	
CONEJOS	4,672	3,714	838	2,301	3,139	575	15.4	79.4	
COSTILLA	2,532	1,787	349	1,025	1,374	413	23.1	70.5	
CROWLEY	2,005	1,580	357	1,102	1,459	121	7.6	78.8	
CUSTER	1,682	1,234	442	714	1,156	78	6.3	73.3	
DELTA	13,046	9,869	5,117	4,049	9,166	703	7.1	75.6	
DENVER	317,059	214,381	70,122	120,558	190,680	23,701	11.0	67.6	
DOLORES	1,032	805	240	444	684	121	15.0	78.0	
DOUGLAS	35,698	25,576	10,757	13,595	24,352	1,224	4.7	71.6	
EAGLE	12,880	8,166	3,309	4,267	7,576	590	7.2	63.4	
ELBERT	6,056	4,590	1,765	2,647	4,412	178	3.8	75.7	
EL PASO	213,647	145,988	80,423	58,207	138,630	7,358	5.0	68.3	
FREMONT	20,467	14,256	6,178	7,128	13,306	950	6.6	69.6	
GARFIELD	15,553	11,692	5,306	5,741	11,047	645	5.5	75.1	
GILPIN	2,456	1,626	704	833	1,537	89	5.4	66.2	
GRAND	5,981	3,963	1,390	2,415	3,805	158	3.9	66.2	
GUNNISON	7,147	4,663	1,455	2,870	4,325	338	7.2	65.2	
HINSDALE	563	428	146	247	393	35	8.1	76.0	
HUERFANO	4,152	3,157	929	1,823	2,752	405	12.8	76.0	
JACKSON	1,194	931	234	639	873	58	6.2	77.9	
JEFFERSON	288,918	204,486	77,616	118,992	196,608	7,878	3.8	70.7	
KIOWA	1,392	1,101	294	708	1,002	99	8.9	79.0	
KIT CARSON	4,827	3,684	968	2,462	3,430	254	6.8	76.8	
LAKE	3,345	2,651	1,024	1,245	2,269	382	14.4	79.2	
LA PLATA	20,405	14,043	6,067	7,104	13,171	872	6.2	68.8	
LARIMER	115,541	85,787	33,435	48,980	82,415	3,372	3.9	74.2	
LAS ANIMAS	9,027	6,590	1,399	3,714	5,113	1,477	22.4	73.0	

NUMBER 6

SHALL THERE BE AN AMENDMENT TO ARTICLE X OF THE COLORADO CONSTITUTION TO REQUIRE VOTER APPROVAL FOR CERTAIN INCREASES IN STATE AND LOCAL GOVERNMENT TAX REVENUES, TO RESTRICT PROPERTY, INCOME, SALES, AND OTHER TAXES, AND TO LIMIT THE RATE OF INCREASE IN STATE SPENDING?

YES

NO

LINCOLN	2,964	2,326	508	1,695	2,203	123	5.2	78.4
LOGAN	11,628	8,472	2,850	5,091	7,941	531	6.2	72.8
MESA	55,290	38,795	22,086	15,221	37,307	1,488	3.8	70.1
MINERAL	666	416	111	277	388	28	6.7	62.4
MOFFAT	7,103	4,677	1,864	2,394	4,258	419	8.9	65.8
MONTEZUMA	9,854	7,010	3,448	3,047	6,495	515	7.3	71.1
MONTROSE	14,041	10,661	4,930	5,083	10,013	648	6.0	75.9
MORGAN	13,456	8,993	2,678	5,611	8,289	704	7.8	66.8
OTERO	12,174	8,569	2,106	5,470	7,576	993	11.5	70.3
OURAY	1,684	1,320	505	749	1,254	66	5.0	78.3
PARK	5,079	3,494	1,476	1,795	3,271	223	6.3	68.7
PHILLIPS	3,029	2,373	539	1,691	2,230	143	6.0	78.3
PITKIN	10,217	6,592	2,613	3,439	6,052	540	8.1	64.5
PROWERS	8,026	5,489	1,261	3,590	4,851	638	11.6	68.3
PUEBLO	76,973	57,087	20,168	33,675	53,843	3,244	5.6	74.1
RIO BLANCO	4,100	2,746	1,022	1,604	2,626	120	4.3	66.9
RIO GRANDE	5,875	4,605	1,162	3,137	4,299	306	6.6	78.3
ROUTT	10,283	6,516	2,488	3,584	6,072	444	6.8	63.3
SAGUACHE	2,834	2,119	506	1,271	1,777	342	16.1	74.7
SAN JUAN	604	442	177	238	415	27	6.1	73.1
SAN MIGUEL	2,710	1,934	579	1,234	1,813	121	6.2	71.3
SEDGWICK	1,986	1,611	456	1,013	1,469	142	8.8	81.1
SUMMIT	8,876	5,809	2,177	3,365	5,542	267	4.5	65.4
TELLER	7,177	5,670	3,014	2,444	5,458	212	3.7	79.0
WASHINGTON	3,531	2,818	680	1,991	2,671	147	5.2	79.8
WELD	70,336	50,680	19,784	28,769	48,553	2,127	4.1	72.0
YUMA	6,188	4,647	1,159	3,159	4,318	329	7.0	75.0
TOTAL		0203704901432665	567,884	778,0751345,959	86,706	6.0	70.3	

Abstract of Votes Cast at the **GENERAL** election held on November, 8, 1988PREGNANCY - YES
PREGNANCY - NO1
2

	# REG	# VOTE	1	2	TOTAL	NO VOTE	%	NO VT	XTRNOUT
ADAMS	141,985	98,575	32,910	62,029	94,939	3,636	3.6	69.4	
ALAMOSA	6,960	5,112	1,266	3,349	4,615	497	9.7	73.4	
ARAPAHOE	298,658	164,420	63,913	88,178	152,091	12,329	7.4	68.8	
ARCHULETA	3,413	2,426	678	1,478	2,156	270	11.1	71.0	
BACA	3,161	2,658	476	1,957	2,433	225	8.4	84.0	
BENT	3,022	2,209	598	1,408	2,006	203	9.1	73.0	
BOULDER	157,212	113,809	56,922	52,879	109,801	4,008	3.5	72.3	
CHAFFEE	7,844	5,806	1,617	3,587	5,204	602	10.3	74.0	
CHEYENNE	1,589	1,231	217	923	1,140	91	7.3	77.4	
CLEAR CREEK	5,244	3,800	1,733	1,881	3,614	186	4.8	72.4	
CONEJOS	4,672	3,714	497	2,628	3,125	589	15.8	79.4	
COSTILLA	2,532	1,787	280	1,131	1,411	376	21.0	70.5	
CROWLEY	2,005	1,580	381	1,063	1,444	136	8.6	78.8	
CUSTER	1,682	1,234	324	829	1,153	81	6.5	73.3	
DELTA	13,046	9,869	2,732	6,467	9,199	670	6.7	75.6	
DENVER	317,059	214,381	93,880	98,994	192,874	21,507	10.0	67.6	
DOLORES	1,032	805	176	460	636	169	20.9	78.0	
DOUGLAS	35,698	25,576	9,214	15,109	24,323	1,253	4.8	71.6	
EAGLE	12,880	8,166	3,744	3,888	7,632	534	6.5	63.4	
ELBERT	6,056	4,590	1,527	2,887	4,414	176	3.8	75.7	
EL PASO	213,647	145,988	44,105	94,591	138,696	7,292	4.9	68.3	
FREMONT	20,467	14,256	3,581	9,589	13,170	1,086	7.6	69.6	
GARFIELD	15,553	11,692	4,489	6,525	11,014	678	5.7	75.1	
GILPIN	2,456	1,626	811	709	1,520	106	6.5	66.2	
GRAND	5,981	3,963	1,638	2,154	3,792	171	4.3	66.2	
GUNNISON	7,147	4,663	1,861	2,443	4,304	359	7.6	65.2	
HINSDALE	563	428	164	217	381	47	10.9	76.0	
HUERFANO	4,152	3,157	814	1,878	2,692	465	14.7	76.0	
JACKSON	1,194	931	359	506	865	66	7.0	77.9	
JEFFERSON	288,918	204,486	79,689	116,146	195,835	8,651	4.2	70.7	
KIOWA	1,392	1,101	205	786	991	110	9.9	79.0	
KIT CARSON	4,827	3,684	827	2,587	3,414	270	7.3	76.3	
LAKE	3,345	2,651	725	1,541	2,266	385	14.5	79.2	
LA PLATA	20,405	14,043	5,665	7,298	12,963	1,080	7.6	68.8	
LARIMER	115,541	85,787	31,662	50,815	82,477	3,310	3.8	74.2	
LAS ANIMAS	9,027	6,590	1,055	4,106	5,161	1,429	21.6	73.0	

NUMBER 7

SHALL THERE BE AN AMENDMENT TO REPEAL ARTICLE V, SECTION 50 OF THE COLORADO CONSTITUTION AND TO PROVIDE INSTEAD THAT THE STATE AND ITS AGENCIES, INSTITUTIONS, AND POLITICAL SUBDIVISIONS SHALL NOT PROHIBIT THE USE OF PUBLIC FUNDS FOR MEDICAL SERVICES FOR A WOMAN SOLELY BECAUSE OF HER CHOICE OF WHETHER OR NOT TO CONTINUE HER PREGNANCY?

YES

NO

LINCOLN	2,964	2,326	628	1,569	2,197	129	5.5	78.4
LOGAN	11,628	8,472	2,371	5,481	7,852	620	7.3	72.8
MESA	55,290	38,795	14,074	23,149	37,223	1,572	4.0	70.1
MINERAL	666	416	132	238	370	46	11.0	62.4
MOFFAT	7,103	4,677	1,189	3,074	4,263	414	8.8	65.8
MONTEZUMA	9,854	7,010	2,100	4,288	6,388	622	8.8	71.1
MONTE ROSE	14,041	10,661	3,243	6,748	9,991	670	6.2	75.9
MORGAN	13,456	8,993	2,492	5,782	8,274	719	7.9	66.8
OTERO	12,174	8,569	2,198	5,317	7,515	1,054	12.3	70.3
OURAY	1,684	1,320	473	763	1,236	84	6.3	78.3
PARK	5,079	3,494	1,476	1,795	3,271	223	6.3	68.7
PHILLIPS	3,029	2,373	512	1,680	2,192	181	7.6	78.3
PITKIN	10,217	6,592	3,794	2,300	6,094	498	7.5	64.5
PROWERS	8,026	5,489	1,206	3,588	4,794	695	12.6	68.3
PUEBLO	76,973	57,087	17,670	35,490	53,160	3,927	6.8	74.1
RIO BLANCO	4,100	2,746	827	1,745	2,572	174	6.3	66.9
RIO GRANDE	5,875	4,605	1,056	3,044	4,100	505	10.9	78.3
ROUTT	10,283	6,516	2,850	3,210	6,060	456	6.9	63.3
SAGUACHE	2,834	2,119	556	1,212	1,768	351	16.5	74.7
SAN JUAN	604	442	149	253	402	40	9.0	73.1
SAN MIGUEL	2,710	1,984	1,009	755	1,764	170	8.7	71.3
SEDGWICK	1,986	1,611	392	1,080	1,472	139	8.6	81.1
SUMMIT	8,876	5,809	2,845	2,714	5,559	250	4.3	65.4
TELLER	7,177	5,670	1,902	3,510	5,412	258	4.5	79.0
WASHINGTON	3,531	2,818	659	1,958	2,612	206	7.3	79.8
WELD	70,336	50,680	16,344	32,206	48,550	2,130	4.2	72.0
YUMA	6,188	4,647	1,188	3,118	4,306	341	7.3	75.0
TOTAL	2023704901432665	534,070	809,0781348,148	89,517	6.2	70.3		

Abstract of Votes Cast at the **GENERAL** election held on November, 8, 1988

LEGISLATIVE REFORM - YES
LEGISLATIVE REFORM - NO

1
2

	# REG	# VOTE	1	2	TOTAL	NO VOTE	%	NO VT	ZTRNOUT
ADAMS	141,985	98,575	60,840	24,644	85,484	13,091	13.2	69.4	
ALAMOSA	6,960	5,112	2,341	1,932	4,273	839	16.4	73.4	
ARAPAHOE	238,658	164,420	99,586	33,441	133,027	31,393	19.0	68.8	
ARCHULETA	3,413	2,426	1,178	631	1,809	617	25.4	71.0	
BACA	3,161	2,658	797	1,255	2,052	606	22.7	84.0	
BENT	3,022	2,209	835	865	1,700	509	23.0	73.0	
BOULDER	157,212	113,809	74,770	22,567	97,337	16,472	14.4	72.3	
CHAFFEE	7,844	5,806	2,911	1,590	4,501	1,305	22.4	74.0	
CHEYENNE	1,589	1,231	428	513	941	290	23.5	77.4	
CLEAR CREEK	5,244	3,800	2,466	797	3,263	537	14.1	72.4	
CONEJOS	4,672	3,714	1,226	1,425	2,651	1,063	28.6	79.4	
COSTILLA	2,532	1,787	425	724	1,149	639	35.7	70.5	
CROWLEY	2,005	1,580	535	747	1,282	298	18.8	78.8	
CUSTER	1,682	1,234	602	402	1,004	230	18.6	73.3	
DELTA	13,046	9,869	5,408	2,715	8,123	1,746	17.6	75.6	
DENVER	317,059	214,381	123,594	40,465	164,059	50,322	23.4	67.6	
DOLORS	1,032	805	250	278	528	277	34.4	78.0	
DOUGLAS	35,698	25,576	16,791	5,022	21,813	3,763	14.7	71.6	
EAGLE	12,880	8,166	4,384	2,080	6,464	1,702	20.8	63.4	
ELBERT	6,056	4,590	2,575	1,359	3,934	656	14.2	75.7	
EL PASO	213,647	145,988	89,400	33,016	122,416	23,572	16.1	68.3	
FREMONT	20,467	14,256	7,963	3,806	11,769	2,487	17.4	69.6	
GARFIELD	15,553	11,692	7,031	2,743	9,774	1,918	16.4	75.1	
GILPIN	2,456	1,626	972	331	1,303	323	19.8	66.2	
GRAND	5,981	3,963	2,196	1,088	3,284	679	17.1	66.2	
GUNNISON	7,147	4,663	2,469	1,150	3,619	1,044	22.3	65.2	
HINSDALE	563	428	222	113	335	93	21.7	78.0	
HUERFANO	4,152	3,157	1,255	933	2,188	969	30.6	76.0	
JACKSON	1,194	931	426	348	774	162	17.4	77.9	
JEFFERSON	288,918	204,486	133,387	42,506	175,893	28,593	13.9	70.7	
KIOWA	1,392	1,101	287	599	886	215	19.5	79.0	
KIT CARSON	4,827	3,684	1,498	1,294	2,792	892	24.2	76.3	
LAKE	3,345	2,651	1,272	667	1,939	712	26.8	79.2	
LA PLATA	20,405	14,043	8,337	3,181	11,518	2,525	17.9	68.8	
LARIMER	115,541	85,787	55,509	18,051	73,560	12,227	14.2	74.2	
LAS ANIMAS	9,027	6,590	1,699	2,100	3,799	2,791	42.3	73.0	

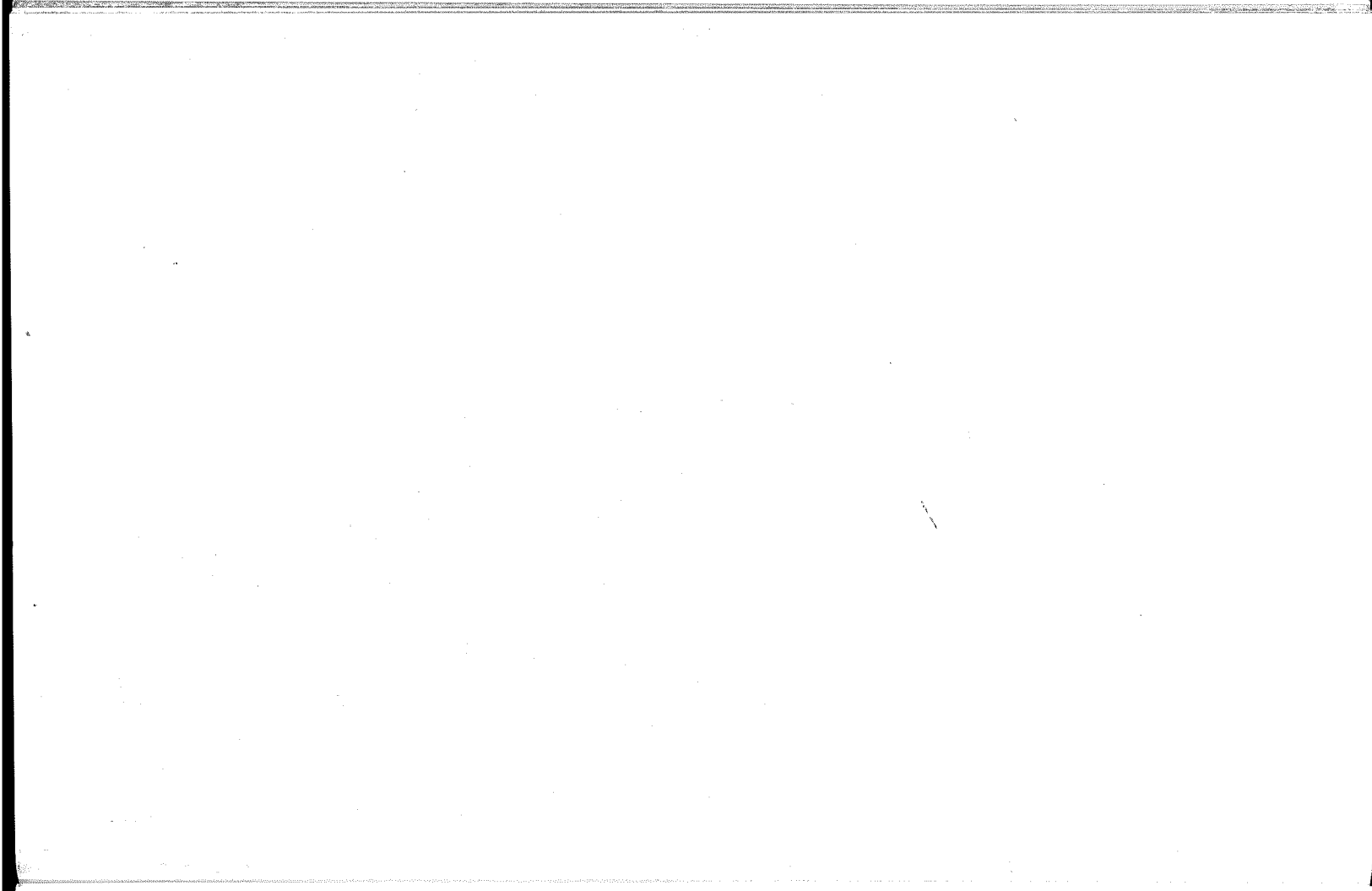
NUMBER 8

SHALL THERE BE AN AMENDMENT TO THE COLORADO CONSTITUTION TO REQUIRE THAT EVERY MEASURE REFERRED TO A COMMITTEE OF REFERENCE OF THE GENERAL ASSEMBLY BE CONSIDERED BY THE COMMITTEE UPON ITS MERITS, TO PROVIDE THAT EACH MEASURE REPORTED BY A COMMITTEE OF REFERENCE TO THE SENATE OR HOUSE SHALL APPEAR ON THE CALENDAR OF THAT CHAMBER IN THE ORDER IN WHICH IT WAS REPORTED, AND TO PROHIBIT MEMBERS OF THE GENERAL ASSEMBLY FROM COMMITTING THEMSELVES OR OTHER MEMBERS IN A PARTY CAUCUS TO VOTE IN FAVOR OF OR AGAINST ANY MATTER PENDING OR TO BE INTRODUCED IN THE GENERAL ASSEMBLY?

YES

NO

LINCOLN	2,964	2,326	903	982	1,885	441	18.9	78.4
LOGAN	11,628	8,472	4,079	2,935	7,014	1,458	17.2	72.8
MESA	55,290	38,795	24,569	9,151	33,720	5,075	13.0	70.1
MINERAL	666	416	144	177	321	95	22.8	62.4
MOFFAT	7,103	4,677	2,165	1,474	3,639	1,038	22.1	65.8
MONTEZUMA	9,854	7,010	3,592	2,159	5,751	1,259	17.9	71.1
MONTRÖSE	14,041	10,661	5,999	2,923	8,922	1,739	16.3	75.9
MORGAN	13,456	8,993	4,197	2,679	6,876	2,117	23.5	66.8
OTERO	12,174	8,569	2,888	3,459	6,347	2,222	25.9	70.3
OURAY	1,684	1,320	734	341	1,075	245	18.5	78.3
PARK	5,079	3,494	2,029	811	2,840	654	18.7	68.7
PHILLIPS	3,029	2,373	821	999	1,820	553	23.3	78.3
PITKIN	10,217	6,592	3,752	1,143	4,895	1,697	25.7	64.5
PROWERS	8,026	5,489	1,797	2,285	4,082	1,407	25.6	68.3
PUEBLO	76,973	57,087	28,717	19,899	48,616	8,471	14.8	74.1
RIO BLANCO	4,100	2,746	1,279	957	2,236	510	18.5	66.9
RIO GRANDE	5,875	4,605	1,908	1,931	3,839	766	16.6	78.3
ROUTT	10,283	6,516	3,735	1,564	5,299	1,217	18.6	63.3
SAGUACHE	2,834	2,119	754	699	1,453	666	31.4	74.7
SAN JUAN	604	442	223	141	364	78	17.6	73.1
SAN MIGUEL	2,710	1,934	1,004	456	1,460	474	24.5	71.3
SEDGWICK	1,986	1,611	613	587	1,200	411	25.5	81.1
SUMMIT	8,876	5,809	3,692	1,192	4,884	925	15.9	65.4
TELLER	7,177	5,670	3,518	1,387	4,905	765	13.4	79.0
WASHINGTON	3,531	2,818	949	1,395	2,344	474	16.8	79.8
WELD	70,336	50,680	30,696	13,055	43,751	6,929	13.6	72.0
YUMA	6,188	4,647	1,826	2,005	3,831	816	17.5	75.0
TOTAL	0208704901482665	852,448	332,159	1184,607	248,058	17.3	70.3	



Abstract of Votes Cast at the **GENERAL** election held on November, 8, 1988

Cultural Question

	YES	NO
Adams	62,147	29,591
Arapahoe	114,979	35,870
Boulder	80,644	27,480
Denver	141,153	44,405
Douglas	9,601	2,724
Jefferson	145,126	49,281
	<u>553,650</u>	<u>189,351</u>

Number 9

SHALL THE ZOO, MUSEUMS AND CULTURAL PROGRAMS IN THE SIX COUNTY METROPOLITAN AREA RECEIVE PROCEEDS FROM A ONE-TENTH OF A CENT SALES TAX TO BE DISTRIBUTED ACCORDING TO LAW WITH STRICT LIMITATIONS ON ADMINISTRATIVE COSTS WITH A GUARANTEED AMOUNT FOR EACH COUNTY AND GOVERNED BY A BOARD WITH REPRESENTATIVES FROM THE SIX COUNTIES?

YES
NO



Abstract of Votes Cast at the **GENERAL** election held on November, 8, 1988

SUPREME COURT JUSTICE

VOLLACK, ANTHONY F-YES
VOLLACK, ANTHONY F-NO

1
2

	# REG	# VOTE	1	2
ADAMS	141,985	98,575	54,131	24,902
ALAMOSA	6,960	5,112	2,967	1,096
ARAPAHOE	238,658	164,420	86,810	27,266
ARCHULETA	3,413	2,426	1,093	578
BACA	3,161	2,658	1,026	607
BENT	3,022	2,209	1,055	441
BOULDER	157,212	113,809	58,968	18,553
CHAFFEE	7,844	5,806	2,559	1,030
CHEYENNE	1,589	1,231	462	344
CLEAR CREEK	5,244	3,800	2,065	909
CONEJOS	4,672	3,714	1,667	962
COSTILLA	2,532	1,787	560	301
CROWLEY	2,005	1,580	843	335
CUSTER	1,682	1,234	671	233
DELTA	13,046	9,869	4,995	2,535
DENVER	317,059	214,381	85,399	19,924
DOLOROS	1,032	805	281	159
DOUGLAS	35,698	25,576	14,241	5,206
EAGLE	12,880	8,166	4,290	1,441
ELBERT	6,056	4,590	2,394	1,079
EL PASO	213,647	145,988	81,740	29,210
FREMONT	20,467	14,256	8,276	3,066
GARFIELD	15,553	11,692	6,570	2,329
GILPIN	2,456	1,626	690	300
GRAND	5,981	3,963	1,986	820
GUNNISON	7,147	4,663	1,999	872
HINSDALE	563	428	185	87

HUERFANO	4,152	3,157	1,553	602
JACKSON	1,194	931	477	152
JEFFERSON	288,918	204,486	112,748	48,437
KIOWA	1,392	1,101	536	228
KIT CARSON	4,827	3,684	1,590	798
LAKE	3,345	2,651	1,007	356
LA PLATA	20,405	14,043	7,672	2,705
LARIMER	115,541	85,787	49,129	13,776
LAS ANIMAS	9,027	6,590	1,920	1,227
LINCOLN	2,964	2,326	1,080	553
LOGAN	11,628	8,472	4,420	2,185
MESA	55,290	38,795	22,891	8,642
MINERAL	666	416	231	65
MOFFAT	7,103	4,677	2,221	922
MONTUZUMA	9,854	7,010	3,663	1,662
MONTROSE	14,041	10,661	5,572	2,537
MORGAN	13,456	8,993	4,023	1,612
OTERO	12,174	8,569	3,149	1,245
OURAY	1,684	1,320	597	289
PARK	5,079	3,494	1,533	746
PHILLIPS	3,029	2,373	1,076	490
PITKIN	10,217	6,592	3,052	1,002
PROWERS	8,026	5,489	2,173	993
PUEBLO	76,973	57,087	34,416	11,329
RIO BLANCO	4,100	2,746	1,347	557
RIO GRANDE	5,875	4,605	2,650	989
ROUTT	10,283	6,516	3,138	1,281
SAGUACHE	2,834	2,119	960	389
SAN JUAN	604	442	250	95
SAN MIGUEL	2,710	1,934	748	345
SEDGWICK	1,986	1,611	778	304
SUMMIT	8,876	5,809	3,141	1,053
TELLER	7,177	5,670	3,019	1,354
WASHINGTON	3,581	2,818	1,152	792
WELD	70,336	50,680	27,699	11,173
YUMA	6,188	4,647	2,251	975

TOTAL

0208704901432665 741,785 261,545

Abstract of Votes Cast at the **GENERAL** election held on November, 8, 1988

COURT OF APPEALS JUDGES

CRISWELL, JOHN A.-YES	1
CRISWELL, JOHN A.-NO	2
PIERCE, CHARLES D.-YES	3
PIERCE, CHARLES D.-NO	4

	# REG	# VOTE	1	2	3	4
ADAMS	141,985	98,575	54,635	23,438	54,264	22,778
ALAMOSA	6,960	5,112	2,995	1,033	2,925	1,017
ARAPAHOE	238,658	164,420	85,267	26,247	84,745	25,097
ARCHULETA	3,413	2,426	1,097	564	1,126	488
BACA	3,161	2,658	1,025	589	1,017	587
BENT	3,022	2,209	1,079	418	1,032	393
BOULDER	157,212	113,809	58,295	18,154	57,841	17,622
CHAFFEE	7,844	5,806	2,571	904	2,491	902
CHEYENNE	1,589	1,231	449	330	440	328
CLEAR CREEK	5,244	3,800	2,055	883	2,050	861
CONEJOS	4,672	3,714	1,659	804	1,311	714
COSTILLA	2,532	1,787	518	277	541	267
CROWLEY	2,005	1,580	841	303	730	288
CUSTER	1,682	1,234	652	233	652	225
DELTA	13,046	9,869	4,988	2,441	4,990	2,359
DENVER	317,059	214,381	82,422	20,116	81,826	19,095
DOLORES	1,032	805	277	151	273	151
DOUGLAS	35,698	25,576	14,323	4,931	14,311	4,785
EAGLE	12,880	8,166	4,303	1,379	4,285	1,347
ELBERT	6,056	4,590	2,382	1,015	2,177	1,002
EL PASO	213,647	145,988	80,587	28,240	79,181	27,546
FREMONT	20,467	14,256	8,304	2,913	7,803	3,086
GARFIELD	15,553	11,692	6,544	2,243	6,456	2,175
GILPIN	2,456	1,626	661	314	663	294
GRAND	5,981	3,963	1,980	764	1,946	786
GUNNISON	7,147	4,663	2,023	851	2,003	847

HINSDALE	563	428	189	78	180	78
HUERFANO	4,152	3,157	1,510	556	1,090	476
JACKSON	1,194	931	477	125	419	135
JEFFERSON	288,918	204,486	110,719	41,274	108,337	41,040
KIOWA	1,392	1,101	527	206	453	199
KIT CARSON	4,827	3,684	1,413	839	1,563	755
LAKE	3,345	2,651	1,006	347	994	340
LA PLATA	20,405	14,043	7,737	2,548	7,723	2,531
LARIMER	115,541	85,787	48,398	13,508	47,811	13,273
LAS ANIMAS	9,027	6,590	1,914	1,139	1,836	1,139
LINCOLN	2,964	2,326	1,043	535	898	515
LOGAN	11,628	8,472	4,438	2,298	4,398	2,222
MESA	55,290	38,795	23,076	8,336	23,054	8,168
MINERAL	666	416	227	63	210	55
MOFFAT	7,103	4,677	2,241	929	2,174	891
MONTEZUMA	9,854	7,010	3,681	1,583	3,666	1,548
MONTROSE	14,041	10,661	5,591	2,435	5,576	2,397
MORGAN	13,456	8,993	4,008	1,588	4,005	1,549
OTERO	12,174	8,569	3,197	1,121	3,145	1,106
OURAY	1,684	1,320	590	275	581	274
PARK	5,079	3,494	1,527	753	1,495	739
PHILLIPS	3,029	2,373	1,051	460	891	462
PITKIN	10,217	6,592	3,055	961	3,059	938
PROWERS	8,026	5,489	2,187	967	2,209	957
PUEBLO	76,973	57,087	34,630	10,742	34,789	9,991
RIO BLANCO	4,100	2,746	1,324	653	1,323	634
RIO GRANDE	5,875	4,605	2,694	902	2,654	865
ROUTT	10,283	6,516	3,133	1,223	3,105	1,195
SAGUACHE	2,834	2,119	933	358	800	356
SAN JUAN	604	442	248	88	244	91
SAN MIGUEL	2,710	1,934	739	319	722	327
SEDGWICK	1,986	1,611	747	294	747	294
SUMMIT	8,876	5,809	3,139	985	3,113	974
TELLER	7,177	5,670	2,984	1,306	2,872	1,311
WASHINGTON	3,531	2,818	1,122	789	982	769
WELD	70,336	50,680	26,746	11,124	26,436	10,709
YUMA	6,188	4,647	2,225	946	2,196	950

TOTAL

0203704901432665 732,398 252,188 722,829 245,293

Abstract of Votes Cast at the **GENERAL** election held on November, 8, 1988**DISTRICT JUDGES**
First Judicial District

MUNCH, CHRISTOPHER J.-YES	1
MUNCH, CHRISTOPHER J.-NO	2
NIETO, HENRY E.-YES	3
NIETO, HENRY E.-NO	4
PERRICONE, GASPAR F.-YES	5
PERRICONE, GASPAR F.-NO	6
VILLANO, MICHAEL C.-YES	7
VILLANO, MICHAEL C.-NO	8

	# REG	# VOTE	1	2	3	4	5	6	7	8
GILPIN	2,456	1,526	652	307	674	303	656	313	673	299
JEFFERSON	288,918	204,486	109,038	39,574	107,765	41,094	106,511	42,150	109,930	40,843
TOTAL	291,374	206,112	109,690	39,881	108,439	41,397	107,167	42,463	110,603	41,142

DISTRICT JUDGES
Second Judicial District

CARELLI, EDWARD EUGENE-YES 1
 CARELLI, EDWARD EUGENE-NO 2
 COUGHLIN, JOHN-W.-YES 3
 COUGHLIN, JOHN W.-NO 4
 FLOWERS, CLIFTON-YES 5
 FLOWERS, CLIFTON-NO 6
 FULLERTON, ROBERT P.-YES 7
 FULLERTON, ROBERT P.-NO 8
 LAWSON, LESLIE M.-YES 9
 LAWSON, LESLIE M.-NO 10
 MARTIN, WARREN O.-YES 11
 MARTIN, WARREN O.-NO 12
 MEYER, WILLIAM G.-YES 13
 MEYER, WILLIAM G.-NO 14
 PETERSON, CONNIE L. - Yes 15
 PETERSON, CONNIE L. - No 16
 ROTHENBERG, SANDRA I. - Yes 17
 ROTHENBERG, SANDRA I. - No 18

	# REG	# VOTE	1	2	3	4	5	6	7	8
DENVER	317,059	214,381	78,525	24,194	82,685	18,479	86,164	20,173	87,379	18,072
TOTAL	317,059	214,381	78,525	24,194	82,685	18,479	86,164	20,173	87,379	18,072
	9	10	11	12	13	14	15	16	17	18
	82,145	18,440	77,054	22,383	79,781	19,451	83,433	18,024	83,051	20,040
	82,145	18,440	77,054	22,383	79,781	19,451	83,433	18,024	83,051	20,040

Abstract of Votes Cast at the **GENERAL** election held on November, 8, 1988

DISTRICT JUDGES
Juvenile Court

COLE, MORRIS E.-YES	1
COLE, MORRIS E.-NO	2
WAKEFIELD, DANA U.-YES	3
WAKEFIELD, DANA U.-NO	4
WEEKS, ORRELLE R.-YES	5
WEEKS, ORRELLE R.-NO	6

	# REG	# VOTE	1	2	3	4	5	6
DENVER	317,059	214,381	73,107	26,726	84,704	17,776	79,667	20,464
TOTAL	317,059	214,381	73,107	26,726	84,704	17,776	79,667	20,464

DISTRICT JUDGES
Third Judicial District

APPEL, CLAUDE W.-YES	1
APPEL, CLAUDE W.-NO	2

	# REG	# VOTE	1	2
HUERFANO	4,152	3,157	1,802	648
LAS ANIMAS	9,027	6,590	1,983	1,194
TOTAL	13,179	9,747	3,785	1,842

**DISTRICT JUDGES
Fourth Judicial District**

CAMPBELL, DONALD E.-YES	1
CAMPBELL, DONALD E.-NO	2
GALLAGHER, JOHN F.-YES	3
GALLAGHER, JOHN F.-NO	4
PELLICAN, STEVEN T.-YES	5
PELLICAN, STEVEN T.-NO	6
RAILEY, MATT MCCONNELL-YES	7
RAILEY, MATT MCCONNELL-NO	8

	# REG	# VOTE	1	2	3	4	5	6	7	8
EL PASO	213,647	145,988	86,685	28,869	83,662	28,885	81,364	27,569	82,434	28,072
TELLER	7,177	5,670	3,184	1,210	3,215	1,193	3,026	1,257	3,212	1,201
TOTAL	220,824	151,658	89,869	30,079	86,877	30,078	84,390	28,826	85,646	29,273

**DISTRICT JUDGES
Fifth Judicial District**

HART, RICHARD H.-YES	1
HART, RICHARD H.-NO	2

	# REG	# VOTE	1	2
CLEAR CREEK	5,244	3,800	2,137	830
EAGLE	12,880	8,166	4,703	1,347
LAKE	3,345	2,651	1,153	372
SUMMIT	8,876	5,809	3,364	975
TOTAL	30,345	20,426	11,357	3,524

Abstract of Votes Cast at the **GENERAL** election held on November, 8, 1988

DISTRICT JUDGES
Eighth Judicial District

HIATT, JAMES H.-YES 1
HIATT, JAMES H.-NO 2

	# REG	# VOTE	1	2
JACKSON	1,194	931	504	122
LARIMER	115,541	85,787	51,968	12,578
TOTAL	116,735	86,718	52,472	12,700

DISTRICT JUDGES
Ninth Judicial District

OSSOLA, THOMAS W.-YES 1
OSSOLA, THOMAS W.-NO 2

	# REG	# VOTE	1	2
GARFIELD	15,558	11,692	7,258	2,418
PITKIN	10,217	6,592	3,250	951
RIO BLANCO	4,100	2,746	1,382	656
TOTAL	29,870	21,030	11,890	4,025

DISTRICT JUDGES
Tenth Judicial District

ROBB, RICHARD D.-YES
 ROBB, RICHARD D.-NO

1
 2

	# REG	# VOTE	1	2
PUEBLO	76,978	57,087	38,210	9,687
TOTAL	76,978	57,087	38,210	9,687

DISTRICT JUDGES
Eleventh Judicial District

KEOHANE, PAUL J.-YES
 KEOHANE, PAUL J.-NO

1
 2

	# REG	# VOTE	1	2
CHAFFEE	7,844	5,806	2,579	1,121
CUSTER	1,682	1,234	615	428
FREMONT	20,467	14,256	4,822	7,644
PARK	5,079	3,494	1,484	775
TOTAL	35,072	24,790	9,500	9,968

Abstract of Votes Cast at the **GENERAL** election held on November, 8, 1988

DISTRICT JUDGES
Thirteenth Judicial District

SHINN, STEVEN EUGENE-YES 1
SHINN, STEVEN EUGENE-NO 2

	# REG	# VOTE	1	2
KIT CARSON	4,827	3,684	1,660	714
LOGAN	11,628	8,472	4,749	2,052
MORGAN	13,456	8,993	4,058	1,581
PHILLIPS	3,029	2,373	1,115	452
SEDGWICK	1,986	1,611	792	282
WASHINGTON	3,531	2,818	1,222	780
YUMA	6,188	4,647	2,957	1,044
TOTAL	44,645	32,598	16,553	6,905

DISTRICT JUDGES
Sixteenth Judicial District

KOLOMITZ, M. JON-YES 1
KOLOMITZ, M. JON-NO 2

	# REG	# VOTE	1	2
BENT	3,022	2,209	1,155	392
CROWLEY	2,005	1,580	912	292
OTERO	12,174	8,569	3,801	1,299
TOTAL	17,201	12,358	5,868	1,983

DISTRICT JUDGES
Seventeenth Judicial District

MARSHALL, DONALD W. JR.-YES	1
MARSHALL, DONALD W. JR.-NO	2
ROAN, PHILIP F.-YES	3
ROAN, PHILIP F.-NO	4

	# REG	# VOTE	1	2	3	4
ADAMS	141,985	98,575	55,772	22,011	54,878	23,689
TOTAL	141,985	98,575	55,772	22,011	54,878	23,689

DISTRICT JUDGES
Eighteenth Judicial District

STEINHARDT, JOYCE S.-YES	1
STEINHARDT, JOYCE S.-NO	2

	# REG	# VOTE	1	2
ARAPAOE	238,658	164,420	86,901	25,225
DOUGLAS	35,698	25,576	14,693	4,635
ELBERT	6,056	4,590	2,444	1,004
LINCOLN	2,964	2,326	1,104	503
TOTAL	283,376	196,912	105,142	31,367